

V&V Reference Report

L2 ASCDS Version : 8.4.5

Observation 12272 - L2 Version 2
Chandra X-Ray Center

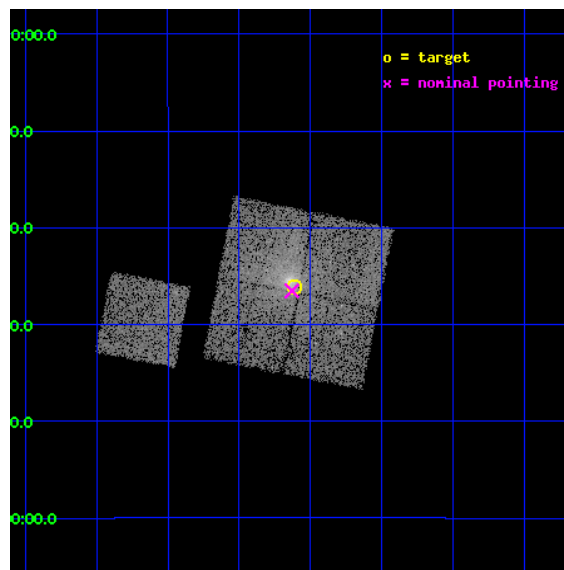
L2 Processing Date : Jul 3 2012

Contents

1	Front	2
2	OBI	3
2.1	OBI	3
2.1.1	Images	3
2.1.2	Bias	3
2.1.3	Parameters	4
2.1.4	Events	4
2.2	Compared Parameters	5
2.3	Aspect	6
2.4	Star Slots	9
2.4.1	Slot 3	9
2.4.2	Slot 4	10
2.4.3	Slot 5	11
2.4.4	Slot 6	12
2.4.5	Slot 7	13
2.5	FID Slots	14
2.5.1	Slot 0	14
2.5.2	Slot 1	15
2.5.3	Slot 2	16
A	Summary	17
A.1	Status	17
A.2	Comments	17

1 Front

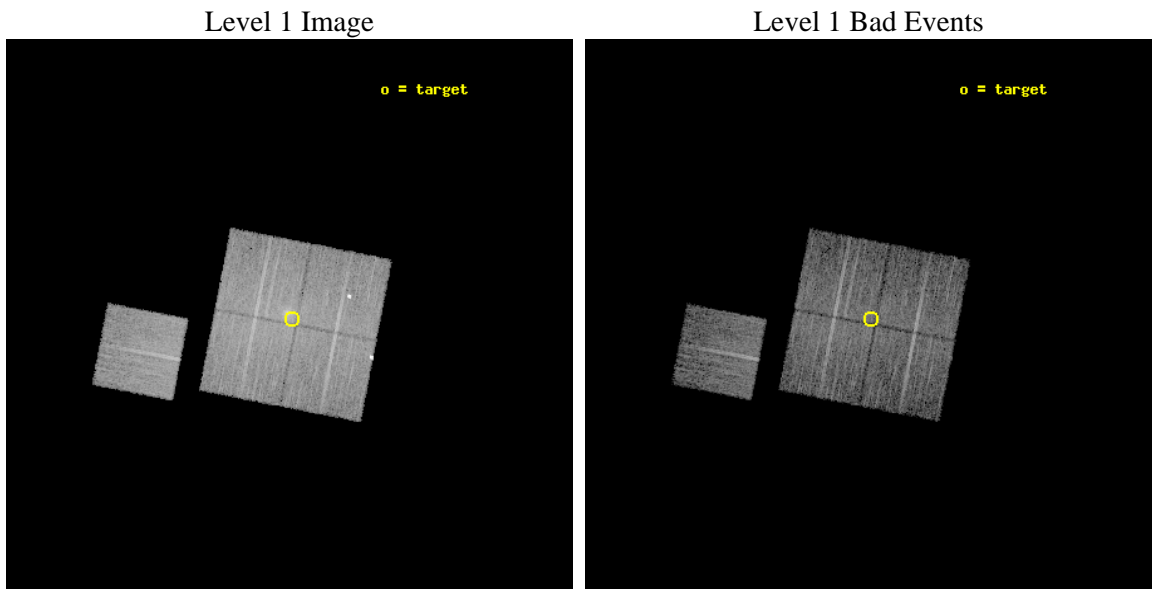
seq_num	800991	Sequence number
obs_id	12272	Observation id
title	A 'CENTENNIAL' SAMPLE OF THE 100 X-RAY BRIGHTEST GALAXY CLUSTERS	
observer	Dr. Alexey Vikhlinin	Principal investigator
object	A2415	Source name
dtcycle	0	
cycle	P	events from which exps? Prim/Second/Both
ra_targ	331.40375	Observer's specified target RA [deg]
dec_targ	-5.601667	Observer's specified target Dec [deg]
ra_nom	331.40765558366	Nominal RA [deg]
dec_nom	-5.6087270252589	Nominal Dec [deg]
roll_nom	281.05076485643	Nominal Roll [deg]
revision	2	Processing version of data
ontime	10053.300077319	Sum of GTIs [s]
livetime	9921.9463106771	Livetime [s]
ontime0	10053.300077319	Sum of GTIs [s]
ontime1	10050.159056962	Sum of GTIs [s]
ontime2	10053.300077319	Sum of GTIs [s]
ontime3	10053.300077319	Sum of GTIs [s]
ontime6	10053.300077319	Sum of GTIs [s]
l2events	45666	Number of level 2 events



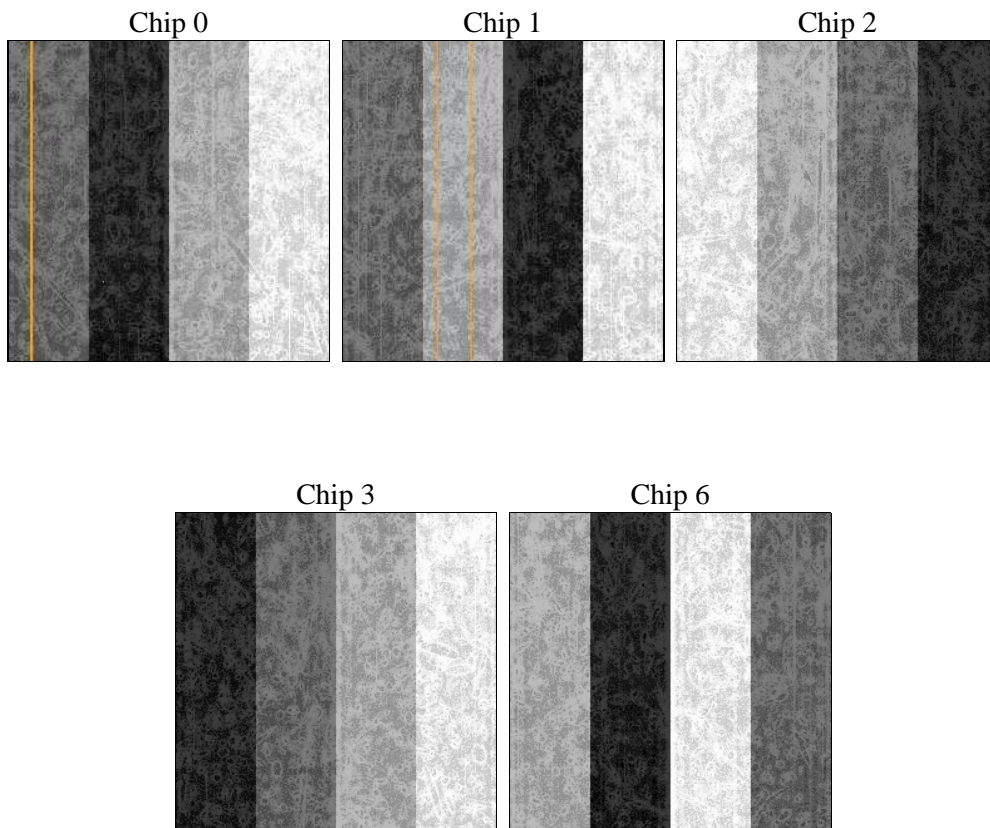
2 OBI

2.1 OBI

2.1.1 Images



2.1.2 Bias



2.1.3 Parameters

obi_num	0	Obi number	sched_exp_time	10000.000000	[s] Scheduled observation exposure time
ascdsver	8.4.5	Processing system revision	ontime	10053.300077319	Sum of GTIs [s]
caldbver	4.5.0	 	ontime0	10053.300077319	Sum of GTIs [s]
date	2012-07-04T00:04:10	Date and time of file creation	ontime1	10050.159056962	Sum of GTIs [s]
revision	2	Processing version of data	ontime2	10053.300077319	Sum of GTIs [s]
			ontime3	10053.300077319	Sum of GTIs [s]
			ontime6	10053.300077319	Sum of GTIs [s]
			l1events	365721	Number of level 1 events

2.1.4 Events

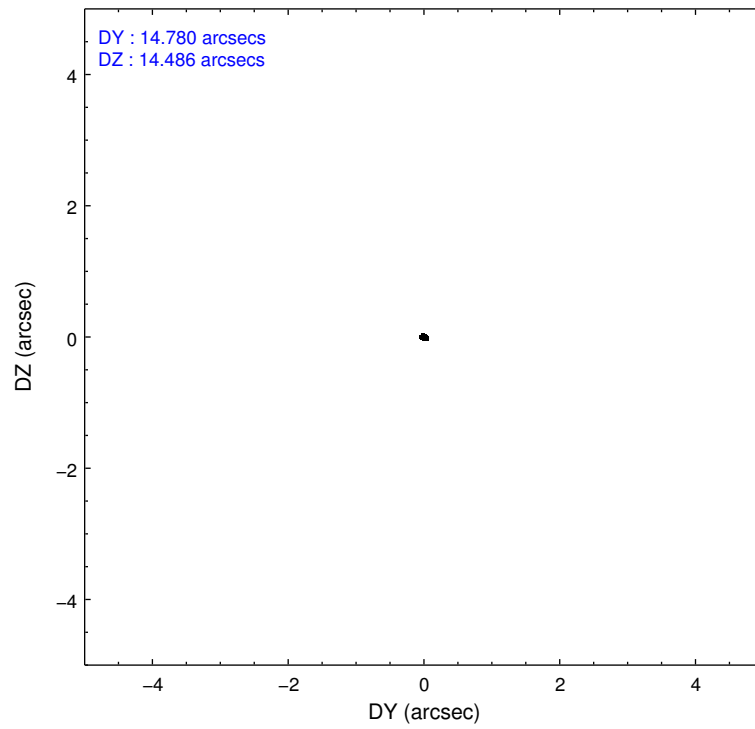
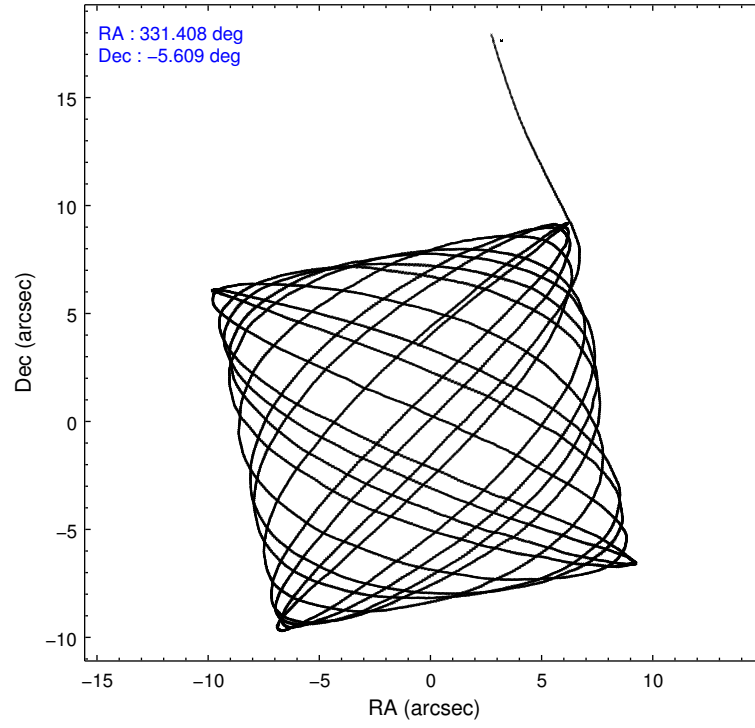
	ccd 0	ccd 1	ccd 2	ccd 3	ccd 6
level 1 events	67869	72608	75457	79172	70615
rejected events	55981	58945	66091	63680	62289
rejected %	82%	81%	87%	80%	88%

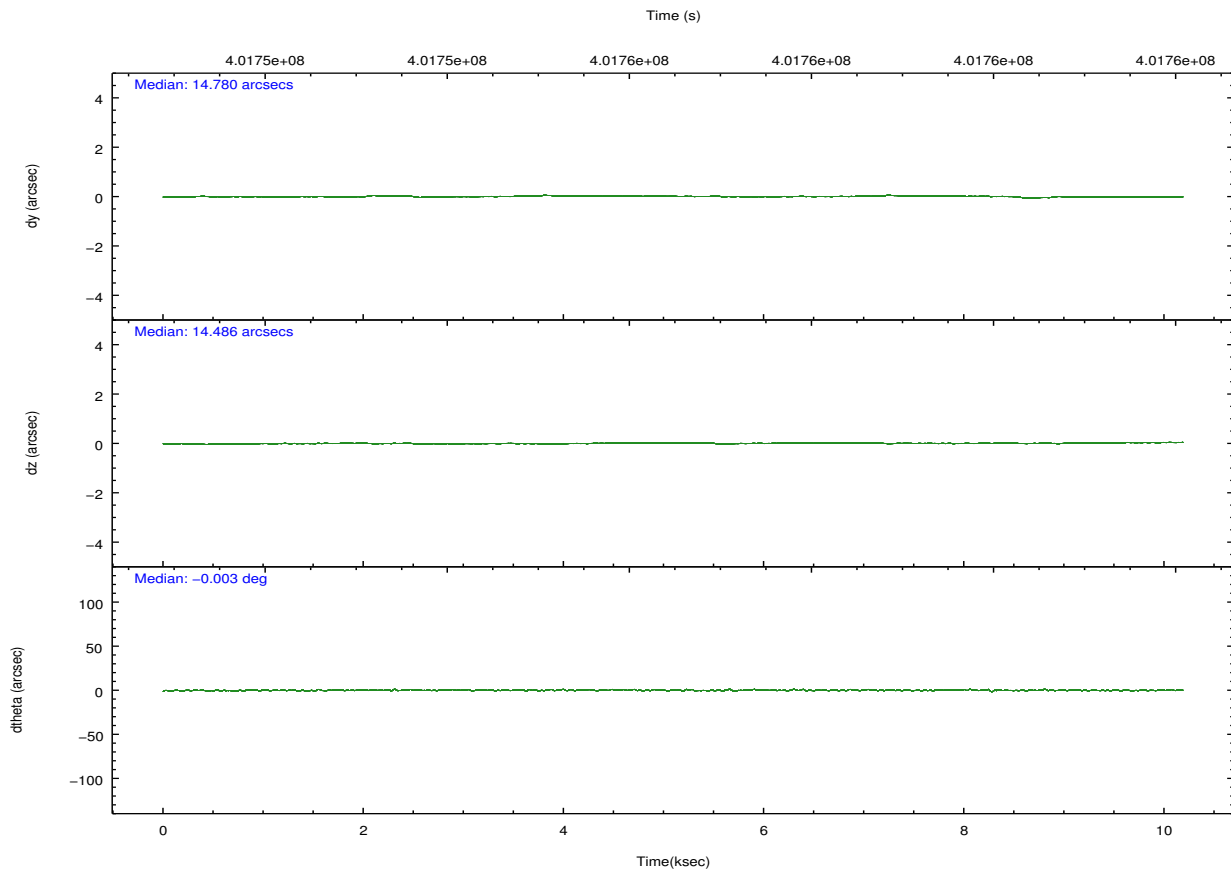
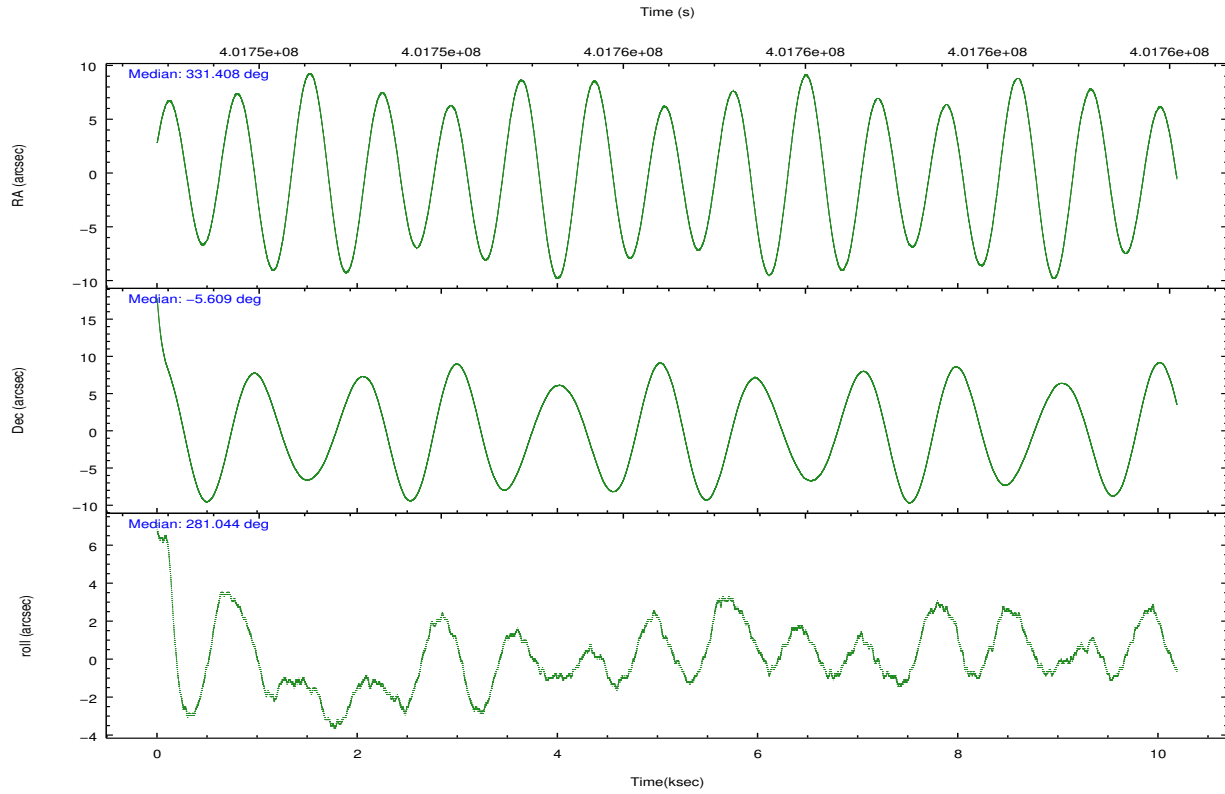
	ccd 0	ccd 1	ccd 2	ccd 3	ccd 6
grade 0 events	6545	7687	4039	9416	2991
	9%	10%	5%	11%	4%
grade 1 events	70	71	50	74	36
	0%	0%	0%	0%	0%
grade 2 events	2018	2288	2049	2332	1817
	2%	3%	2%	2%	2%
grade 3 events	879	934	863	1072	876
	1%	1%	1%	1%	1%
grade 4 events	833	976	887	970	858
	1%	1%	1%	1%	1%
grade 5 events	2943	3270	2913	3354	3161
	4%	4%	3%	4%	4%
grade 6 events	1618	1780	1532	1708	1789
	2%	2%	2%	2%	2%
grade 7 events	52963	55602	63124	60246	59087
	78%	76%	83%	76%	83%

2.2 Compared Parameters

Parameter	Planned	Actual	Parameter	Planned	Actual
Instrument	ACIS	ACIS	Obspar format version number	7	7
Detector	ACIS-01236	ACIS-01236	Obspar file type	PREDICTED	ACTUAL
Grating	NONE	NONE	Obspar update status	NONE	UPDATED
Data mode	VFAINT	VFAINT	CCD I0 on	Y	Y
Observation mode	POINTING	POINTING	CCD I1 on	Y	Y
[deg] Pointing RA	331.389374	331.4076555836567	CCD I2 on	Y	Y
[deg] Pointing Dec	-5.588114	-5.60872702525885	CCD I3 on	Y	Y
[deg] Pointing Roll	280.840294	281.0507648564303	CCD S0 on	N	N
[mm] SIM focus pos	-0.782348	-0.7809083437167272	CCD S1 on	N	N
[mm] SIM defocus	0	0.001439871863259334	CCD S2 on	O1	Y
[mm] SIM translation stage pos	-233.592463	-233.5874344608287	CCD S3 on	N	N
[mm] SIM translation stage offset	0	-0.005018542100998502	CCD S4 on	N	N
[s] Observation start time (MET)	401751581.184000	401750366.56099	CCD S5 on	N	N
Observation start date	2010-09-24T21:38:35	2010-09-24T21:19:26	Number of optional ACIS chips dropped	0	0
[s] Observation end time (MET)	401761581.184000	401762677.83663	On-chip summing requested	N	N
Observation end date	2010-09-25T00:25:15	2010-09-25T00:44:37	Subarray requested	NONE	NONE
Read mode	TIMED	TIMED	Alternating exposures requested	N	N
			[s] Primary exposure time	0.000000	3.1

2.3 Aspect



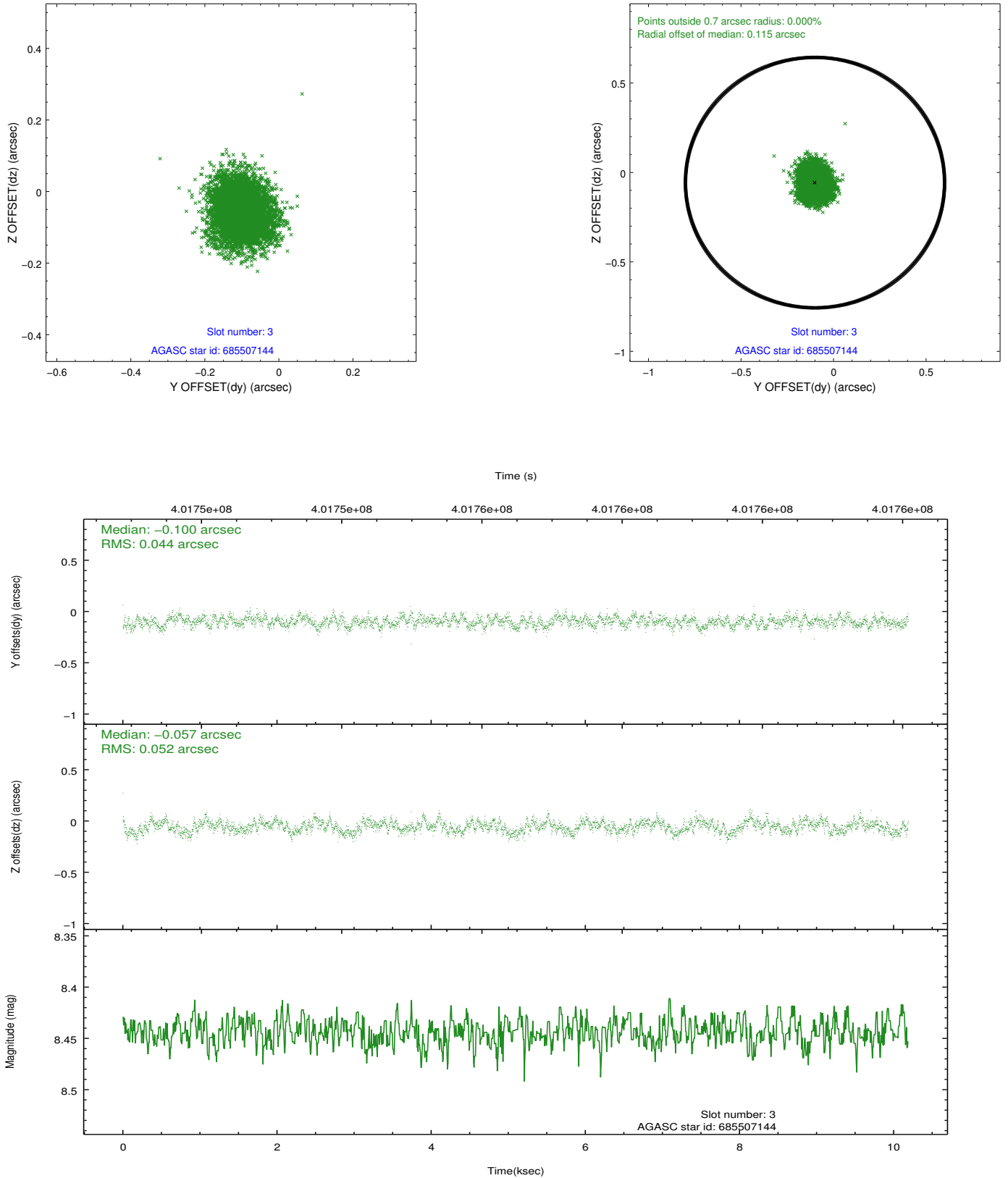


Slot Statistics

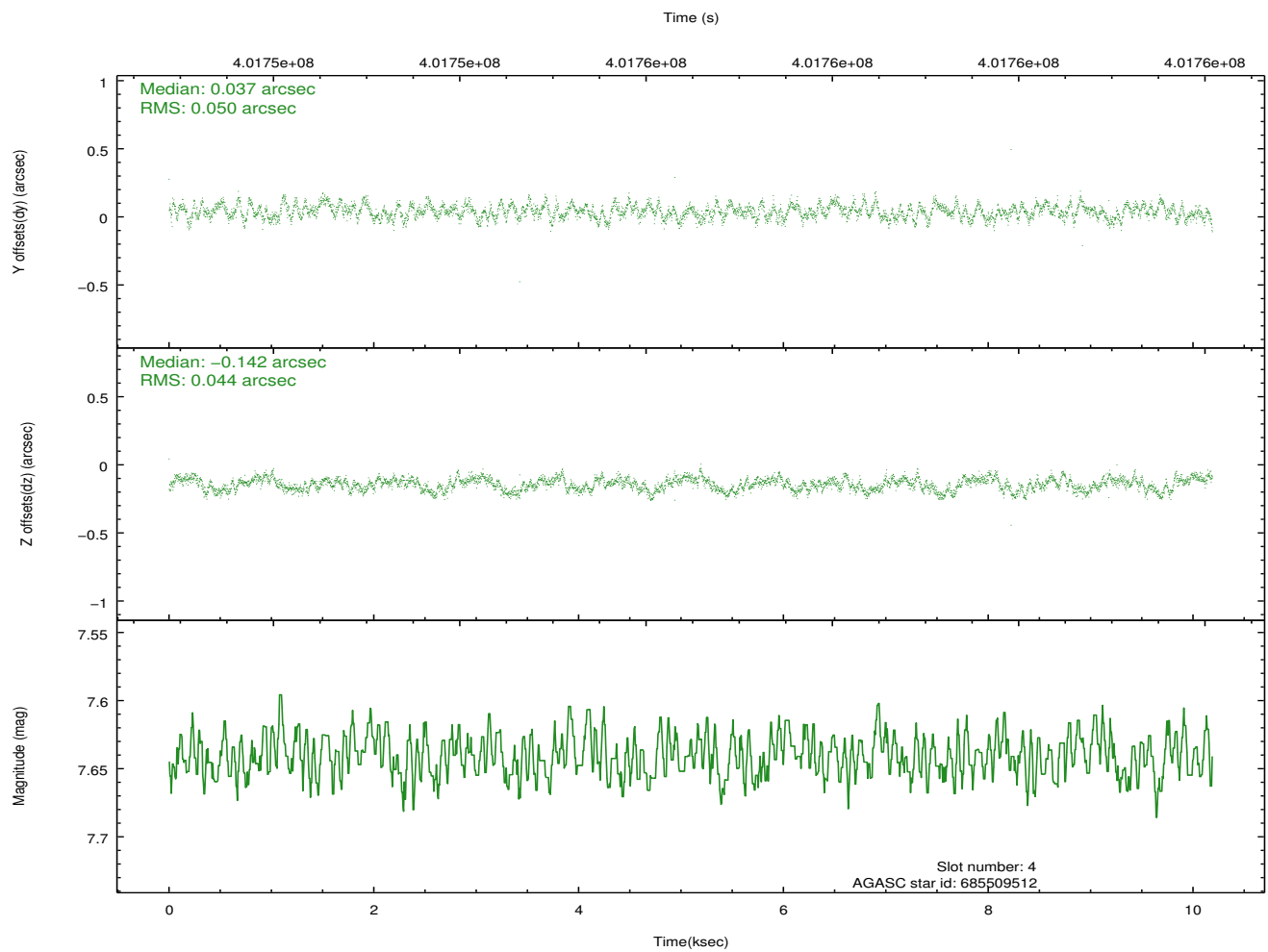
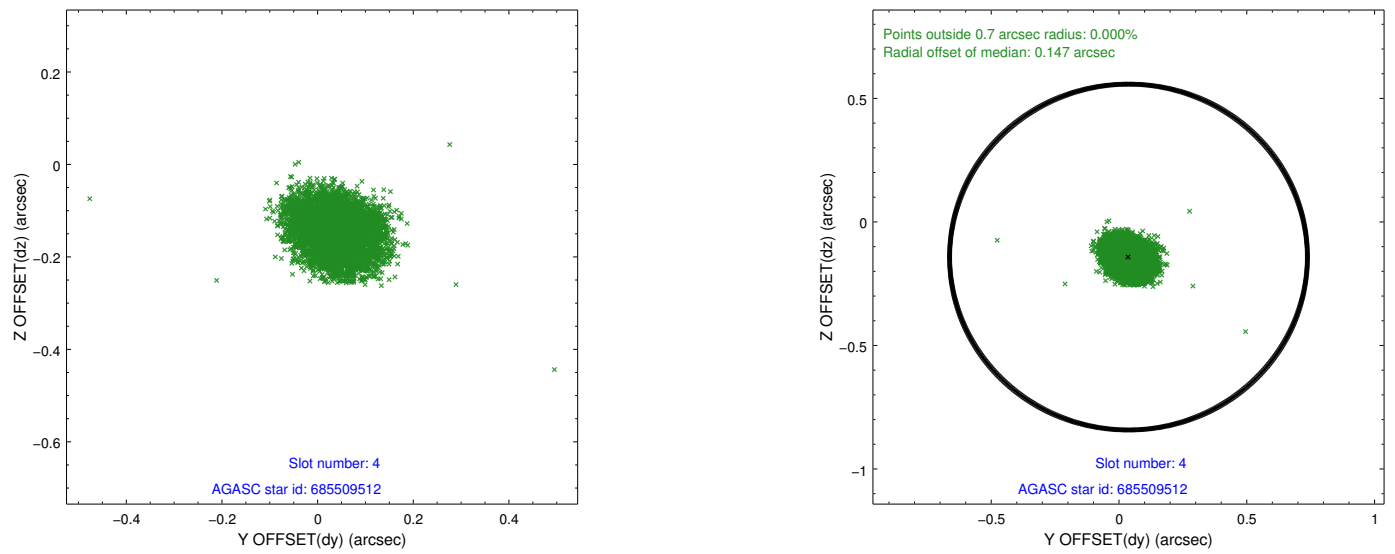
slot	status	id	mag	n_pts	med_dy	med_dz	dr1	dr2	ra	dec	mean_y	mean_z
0	FID	ACIS-I-1	7.10	2484	0.046	-0.008	0.006	0.010	0.000000	0.000000	924.75	-838.06
1	FID	ACIS-I-5	7.09	2485	-0.243	0.043	0.006	0.010	0.000000	0.000000	-1823.40	1059.16
2	FID	ACIS-I-6	7.09	2485	0.105	0.035	0.006	0.011	0.000000	0.000000	389.74	1704.29
3	GUIDE	685507144	8.44	4969	-0.100	-0.057	0.072	0.116	331.886956	-5.293069	-706.95	1951.35
4	GUIDE	685509512	7.64	4971	0.037	-0.142	0.071	0.109	331.522208	-5.358060	-722.63	625.12
5	GUIDE	685515272	7.32	4966	-0.080	-0.021	0.073	0.112	331.923462	-5.828734	1211.43	1716.15
6	GUIDE	685516760	8.02	4969	0.093	-0.042	0.062	0.102	330.880665	-5.890188	727.27	-1992.65
7	GUIDE	685514168	9.19	4966	0.053	0.269	0.086	0.143	330.976890	-5.000939	-2353.11	-1055.90

2.4 Star Slots

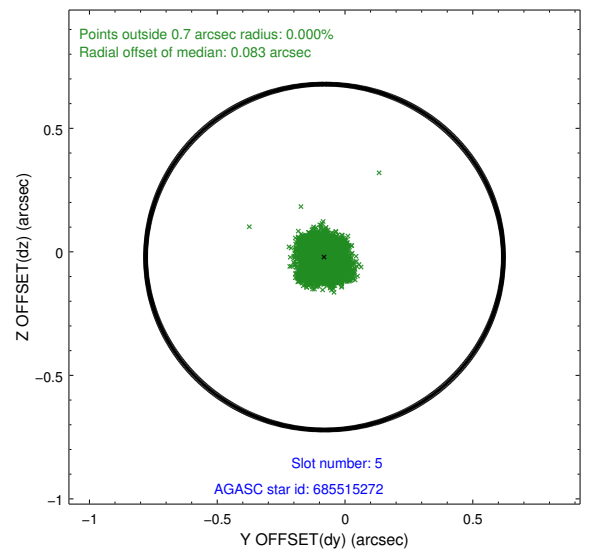
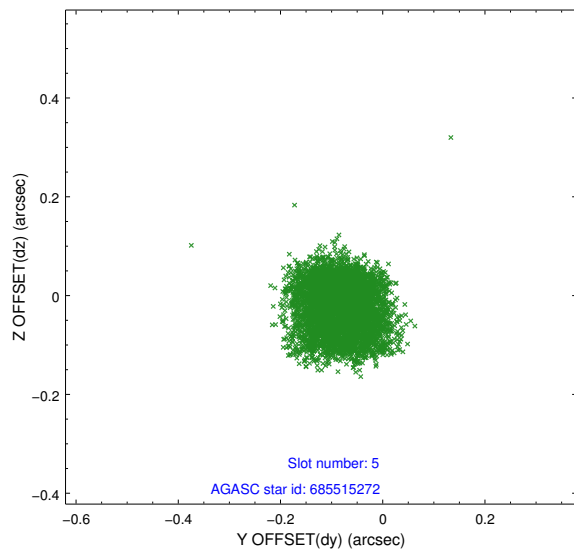
2.4.1 Slot 3



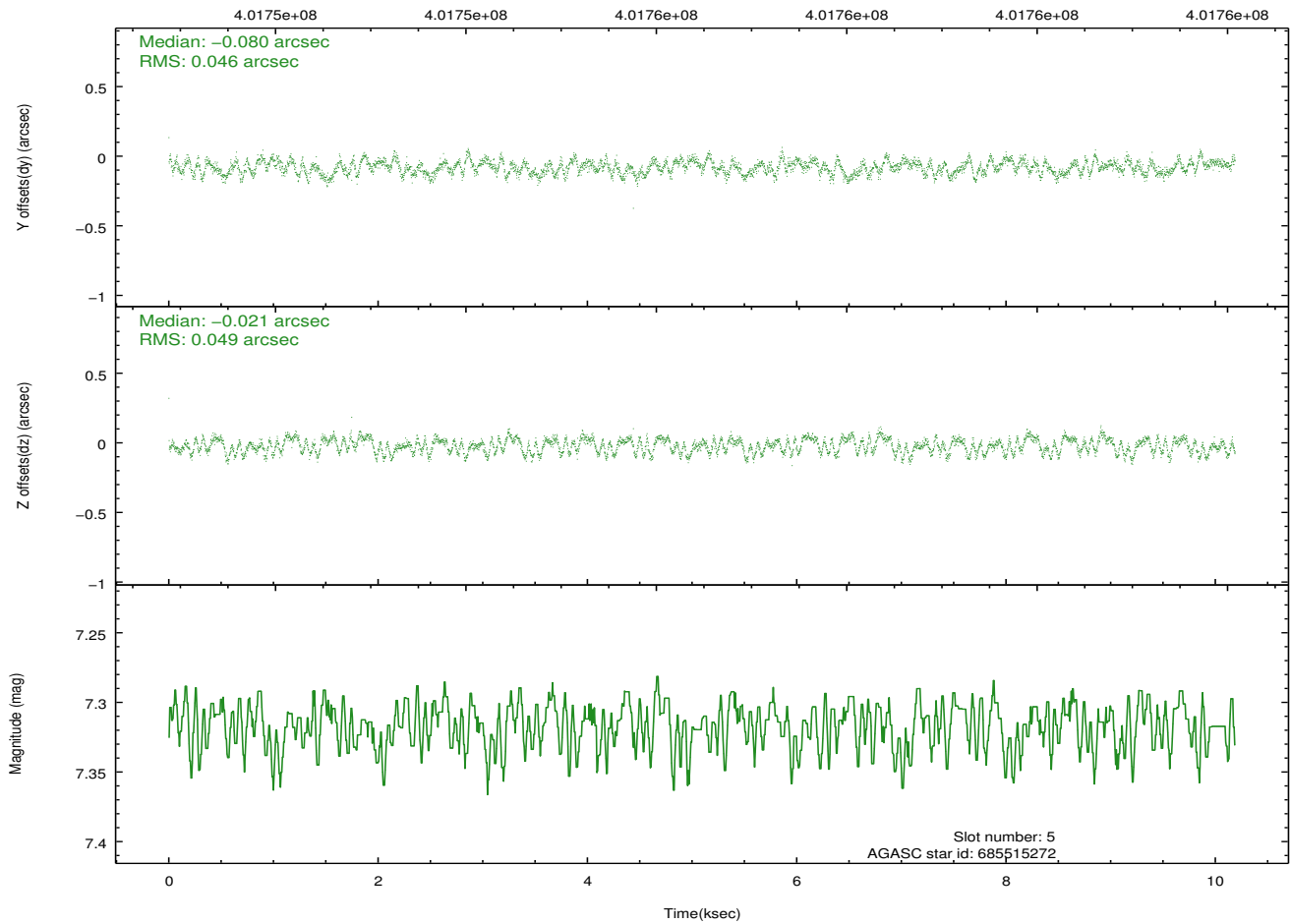
2.4.2 Slot 4



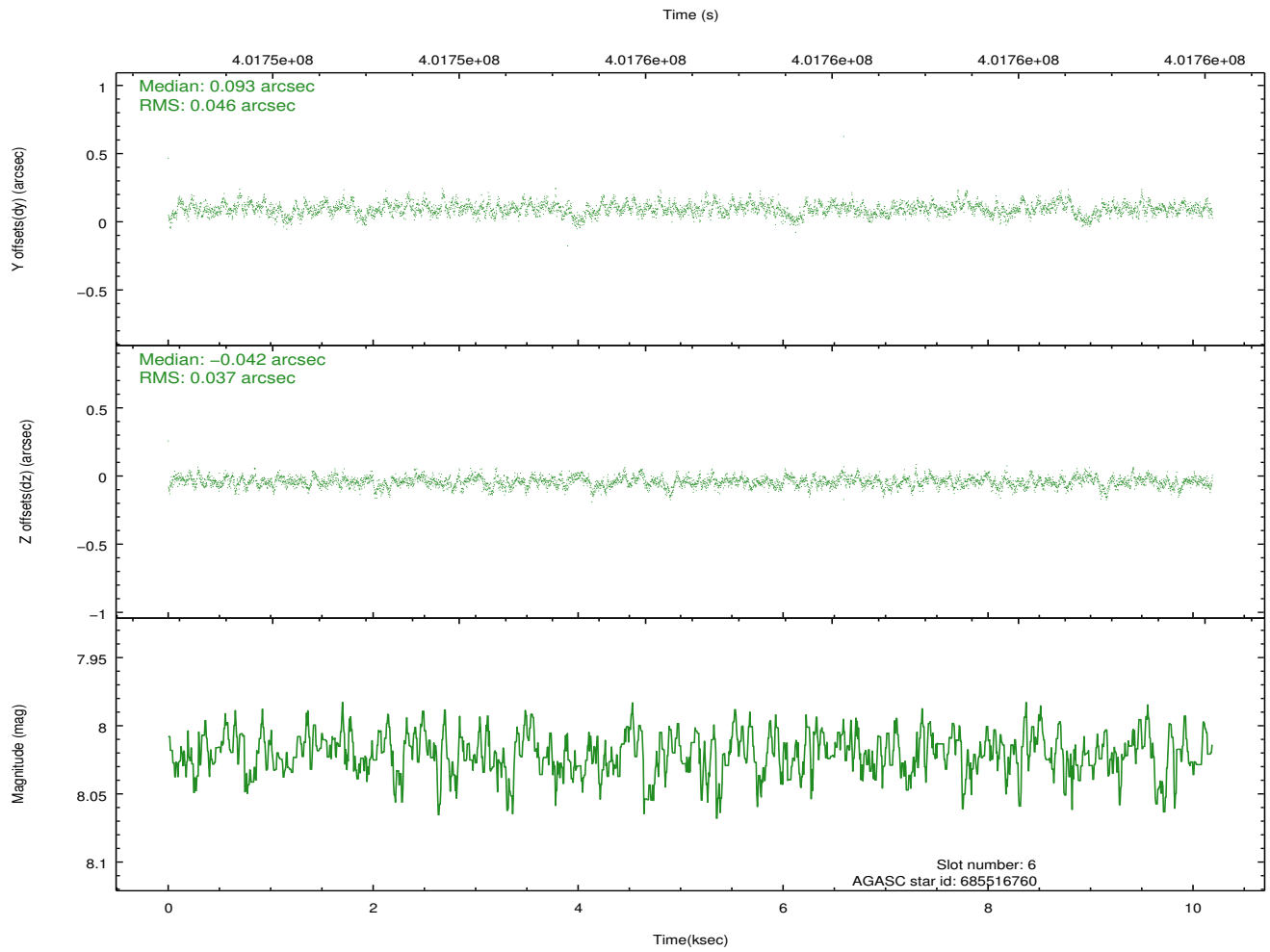
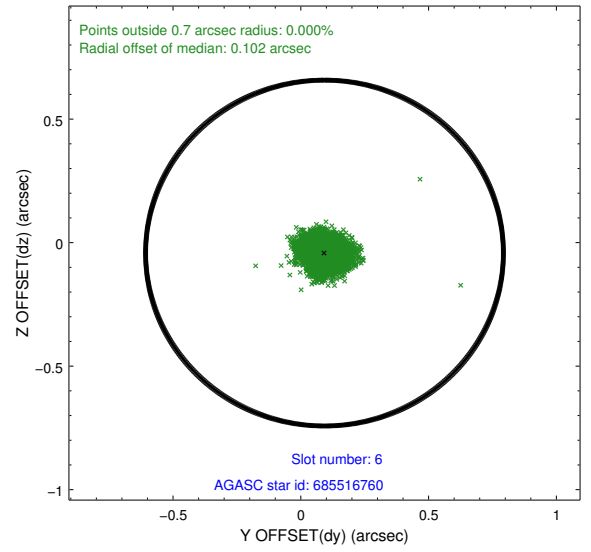
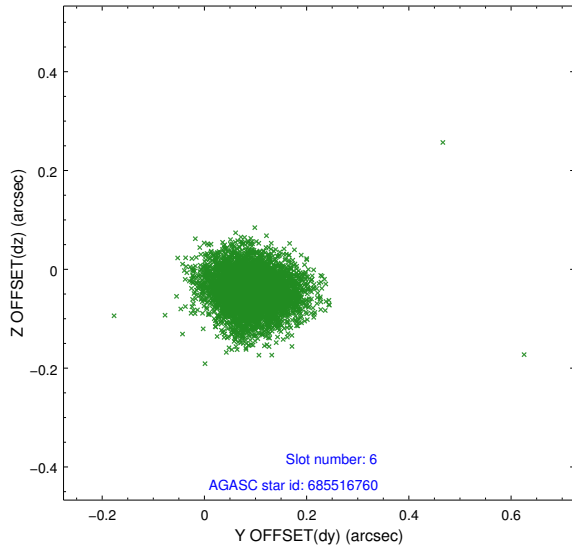
2.4.3 Slot 5



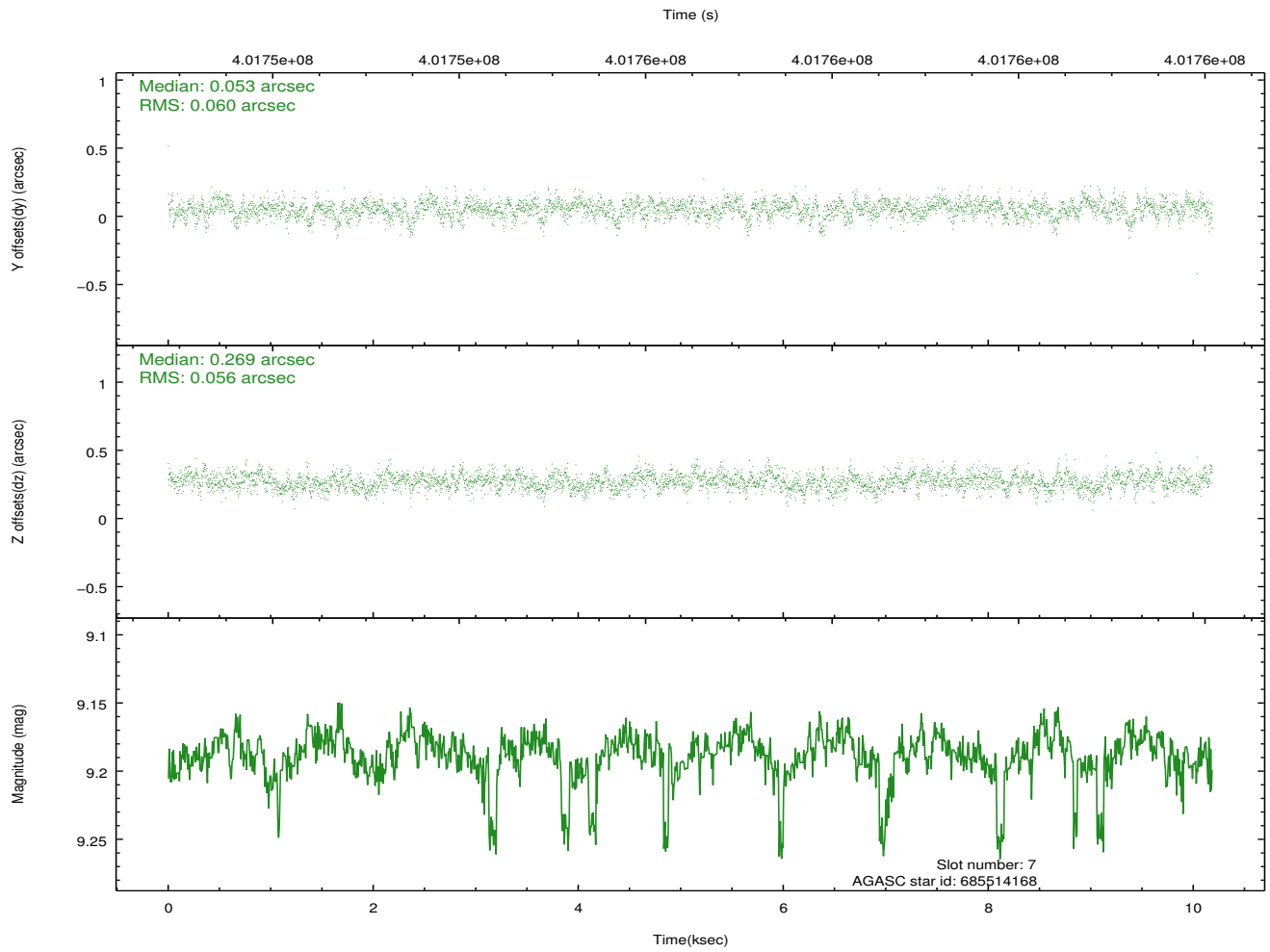
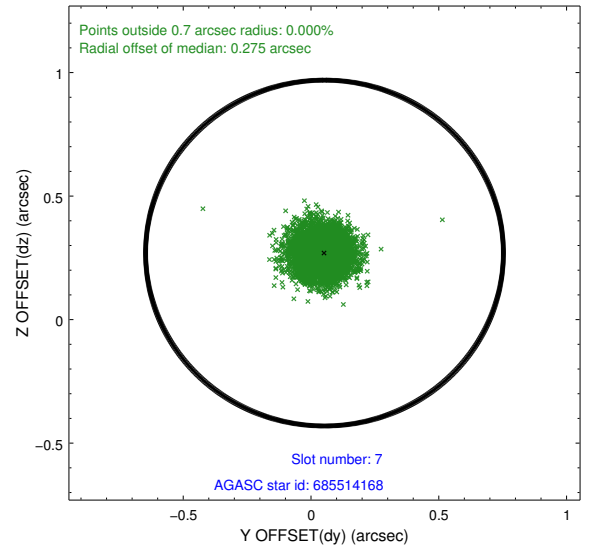
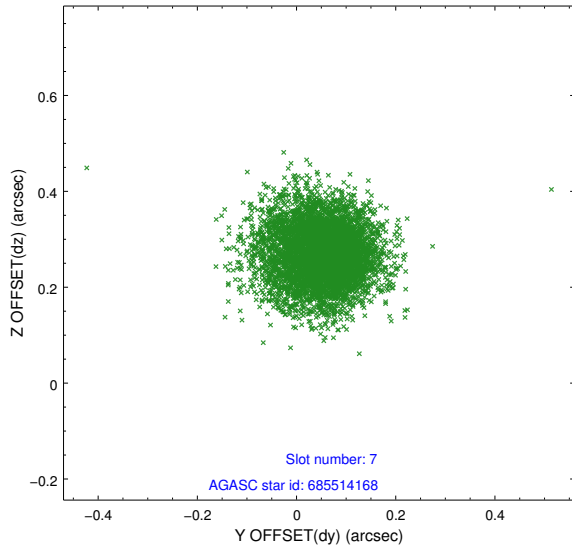
Time (s)



2.4.4 Slot 6

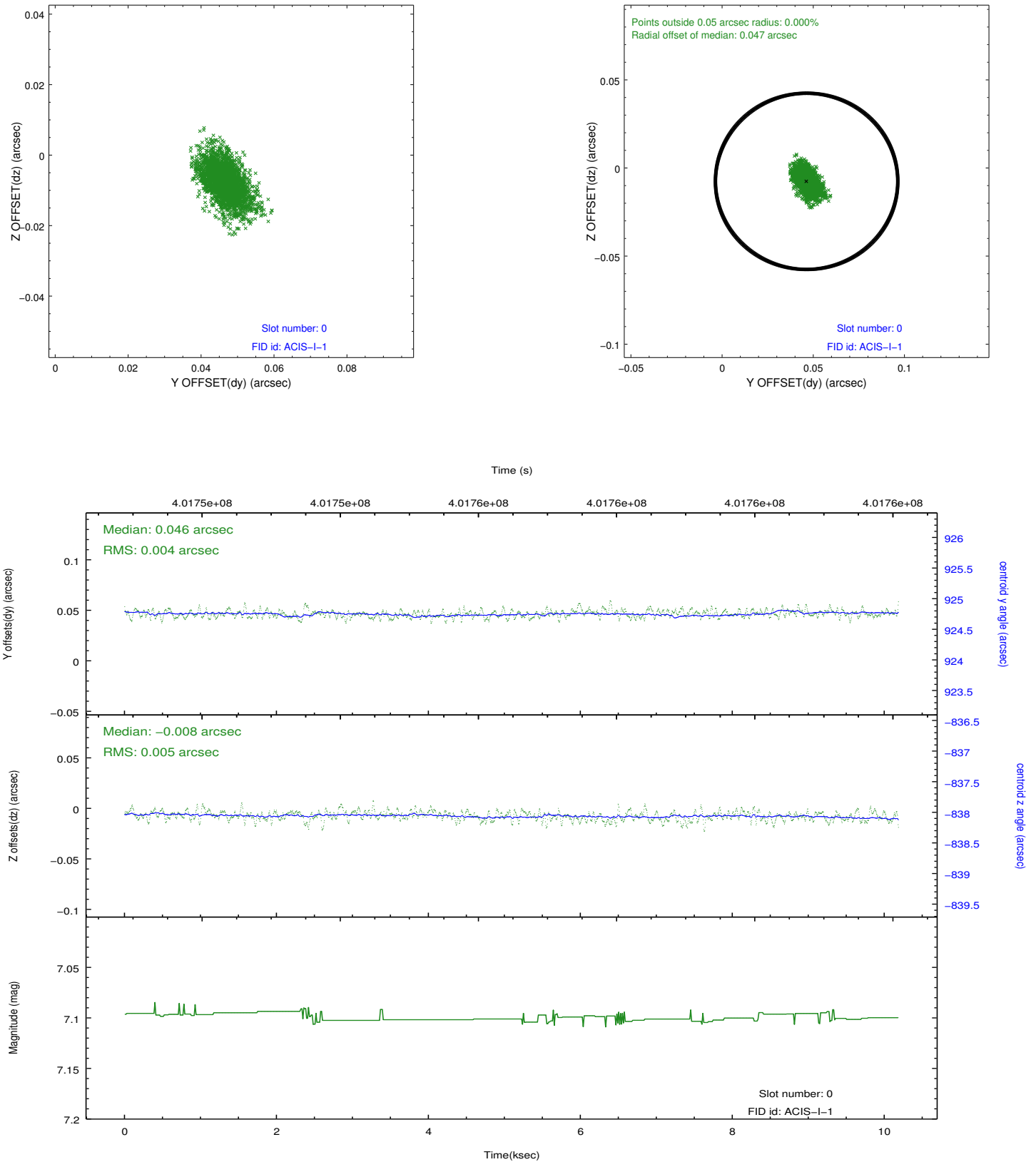


2.4.5 Slot 7

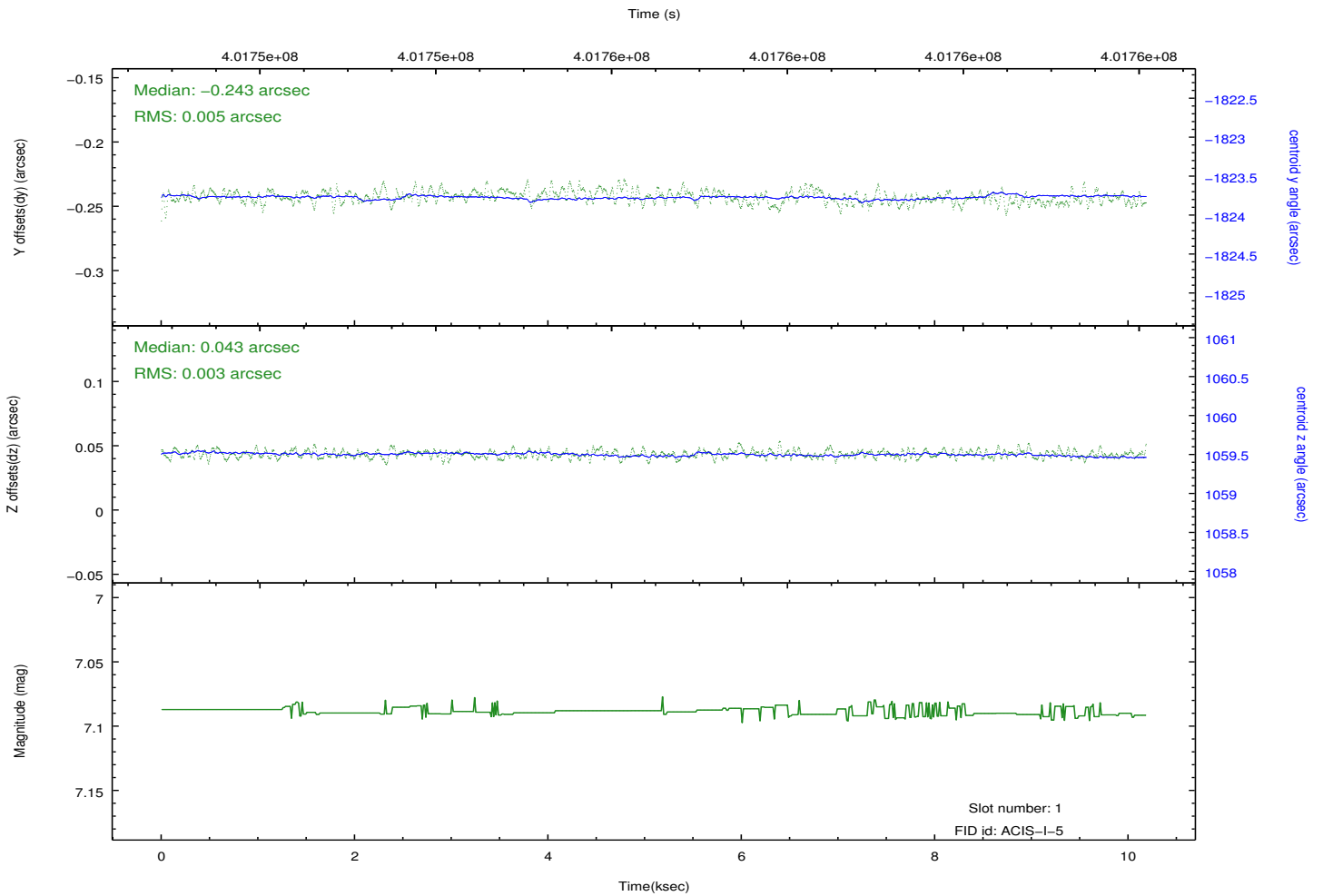
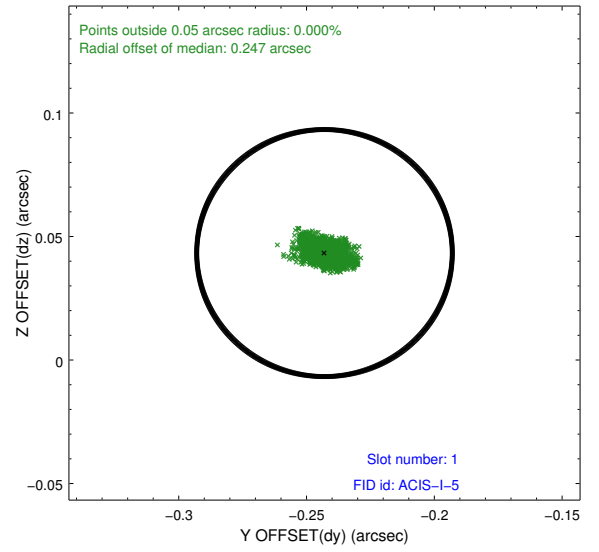
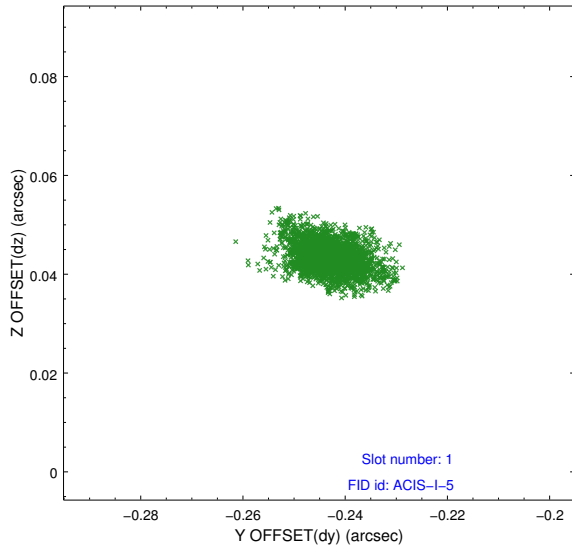


2.5 FID Slots

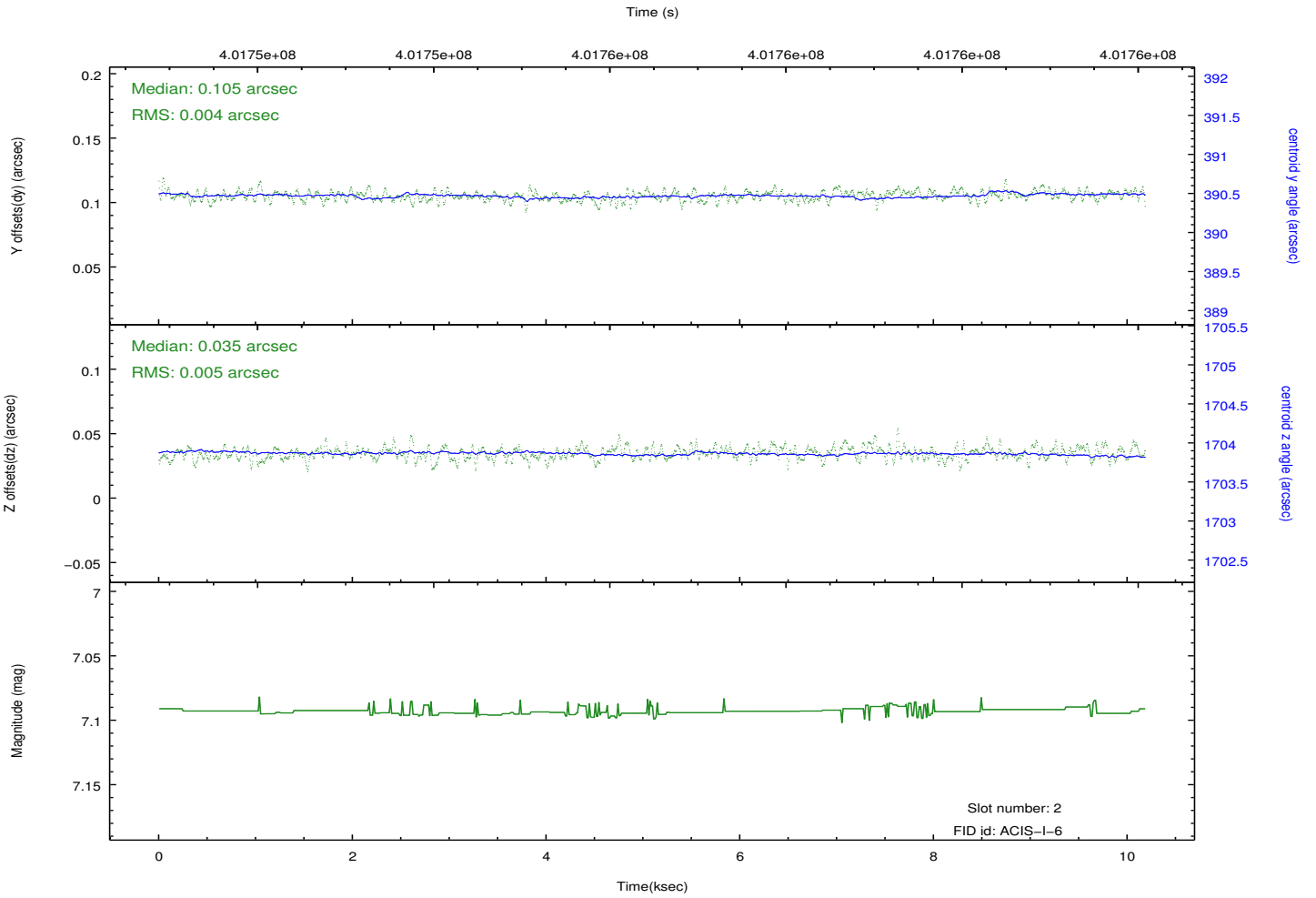
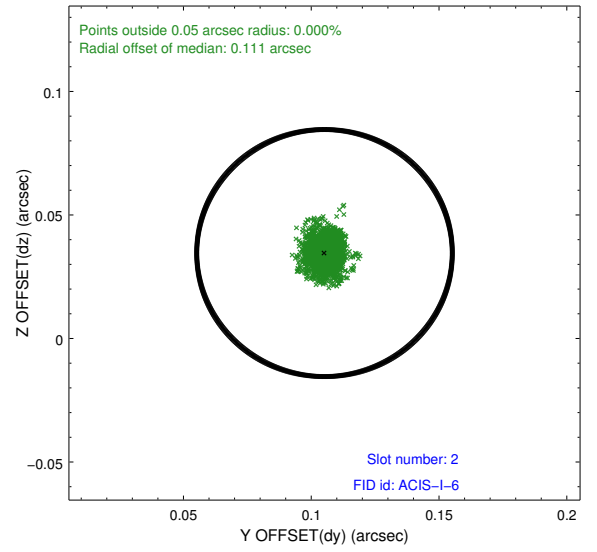
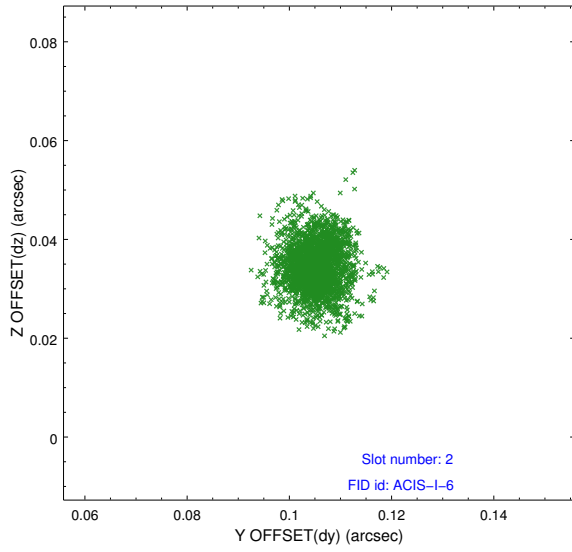
2.5.1 Slot 0



2.5.2 Slot 1



2.5.3 Slot 2



A Summary

A.1 Status

V&V Scientist	Jen Lauer
V&V Date (YYYY-MM-DD)	2012.07.12
V&V Edition	1
V&V Disposition and Status	OK
V&V Charge Time	10.053300077319

A.2 Comments