

V&V Reference Report

L2 ASCDS Version : 8.4.5

Observation 12292 - L2 Version 2
Chandra X-Ray Center

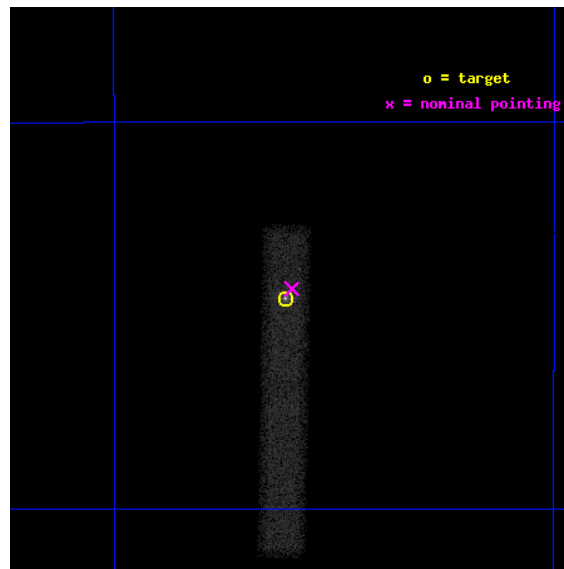
L2 Processing Date : Jul 7 2012

Contents

1	Front	2
2	OBI	3
2.1	OBI	3
2.1.1	Images	3
2.1.2	Bias	3
2.1.3	Parameters	4
2.1.4	Events	4
2.2	Compared Parameters	5
2.3	Aspect	6
2.4	Star Slots	9
2.4.1	Slot 3	9
2.4.2	Slot 4	10
2.4.3	Slot 5	11
2.4.4	Slot 6	12
2.4.5	Slot 7	13
2.5	FID Slots	14
2.5.1	Slot 0	14
2.5.2	Slot 1	15
2.5.3	Slot 2	16
A	Summary	17
A.1	Status	17
A.2	Comments	17

1 Front

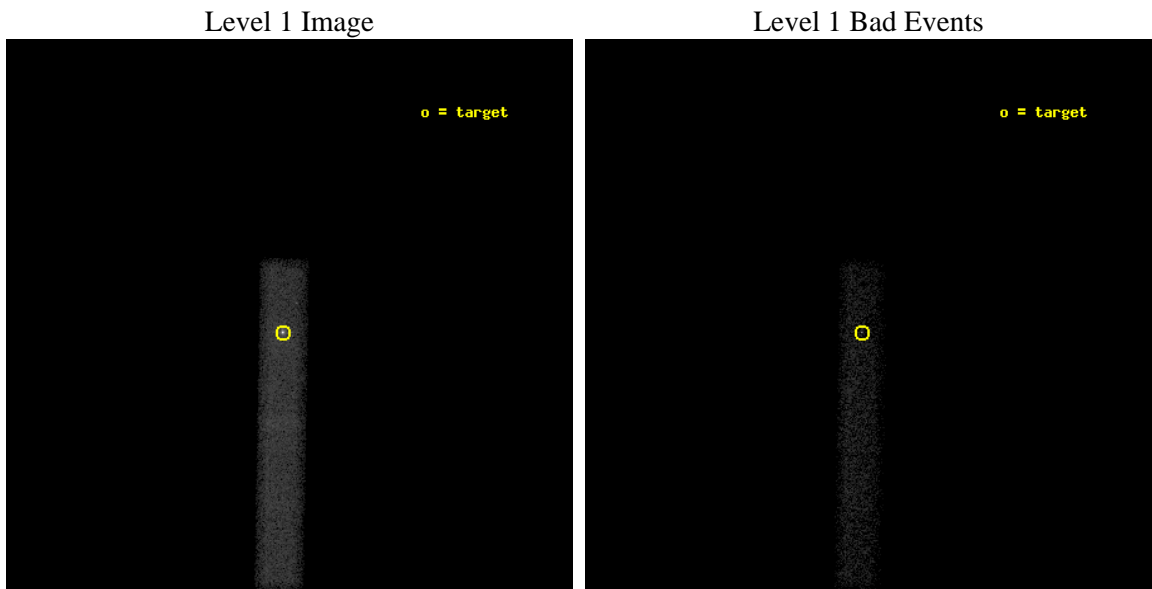
seq_num	900947	Sequence number
obs_id	12292	Observation id
title	A CHandra survey of Extended Emission-line Regions in nearby Seyfert galaxies (CHEERS)	Proposal title
observer	Dr. Junfeng Wang	Principal investigator
object	NGC 4507	Source name
dtcycle	0	
cycle	P	events from which exps? Prim/Second/Both
ra_targ	188.9025	Observer's specified target RA [deg]
dec_targ	-39.909278	Observer's specified target Dec [deg]
ra_nom	188.89909393021	Nominal RA [deg]
dec_nom	-39.905191857361	Nominal Dec [deg]
roll_nom	90.992876435247	Nominal Roll [deg]
revision	2	Processing version of data
ontime	43658.797397733	Sum of GTIs [s]
livetime	39596.224739464	Livetime [s]
ontime7	43658.797397733	Sum of GTIs [s]
l2events	32316	Number of level 2 events



2 OBI

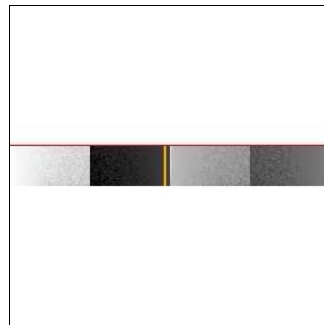
2.1 OBI

2.1.1 Images



2.1.2 Bias

Chip 7



2.1.3 Parameters

obi_num	0	Obi number	sched_exp_time	43650.000000	[s] Scheduled observation exposure time
ascdsver	8.4.5	Processing system revision	ontime	43658.797397733	Sum of GTIs [s]
caldbver	4.5.0	 	ontime7	43658.797397733	Sum of GTIs [s]
date	2012-07-07T18:10:14	Date and time of file creation	l1events	53029	Number of level 1 events
revision	2	Processing version of data			

2.1.4 Events

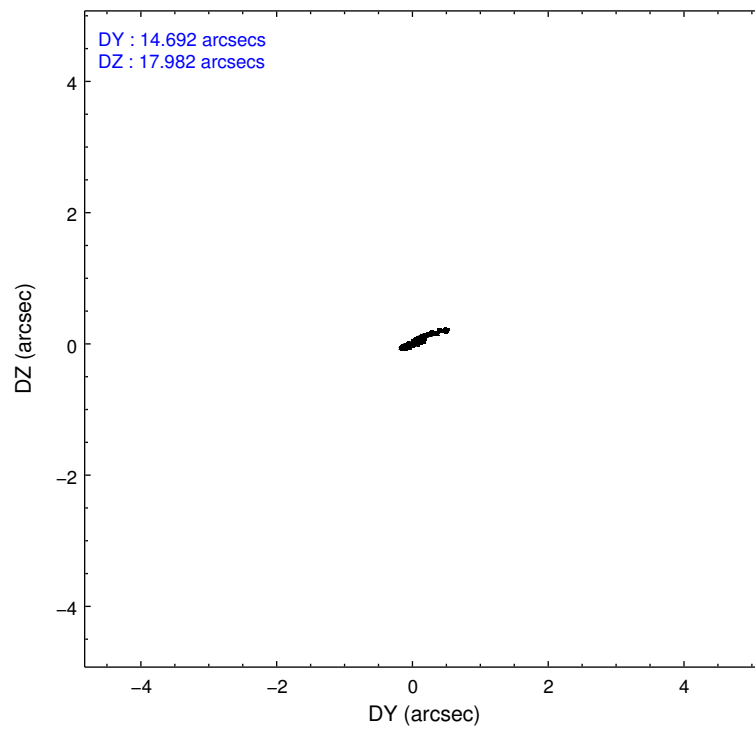
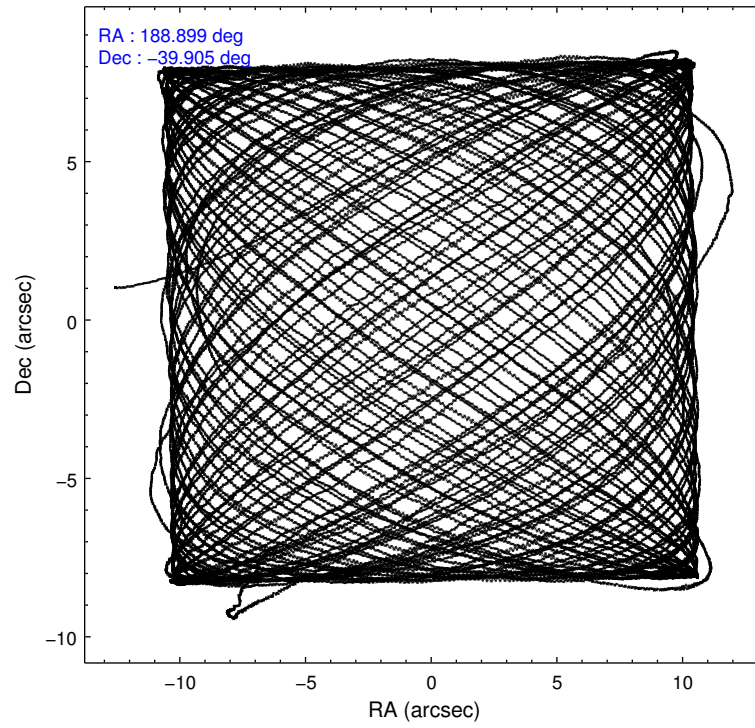
	ccd 7
level 1 events	53029
rejected events	19437
rejected %	36%

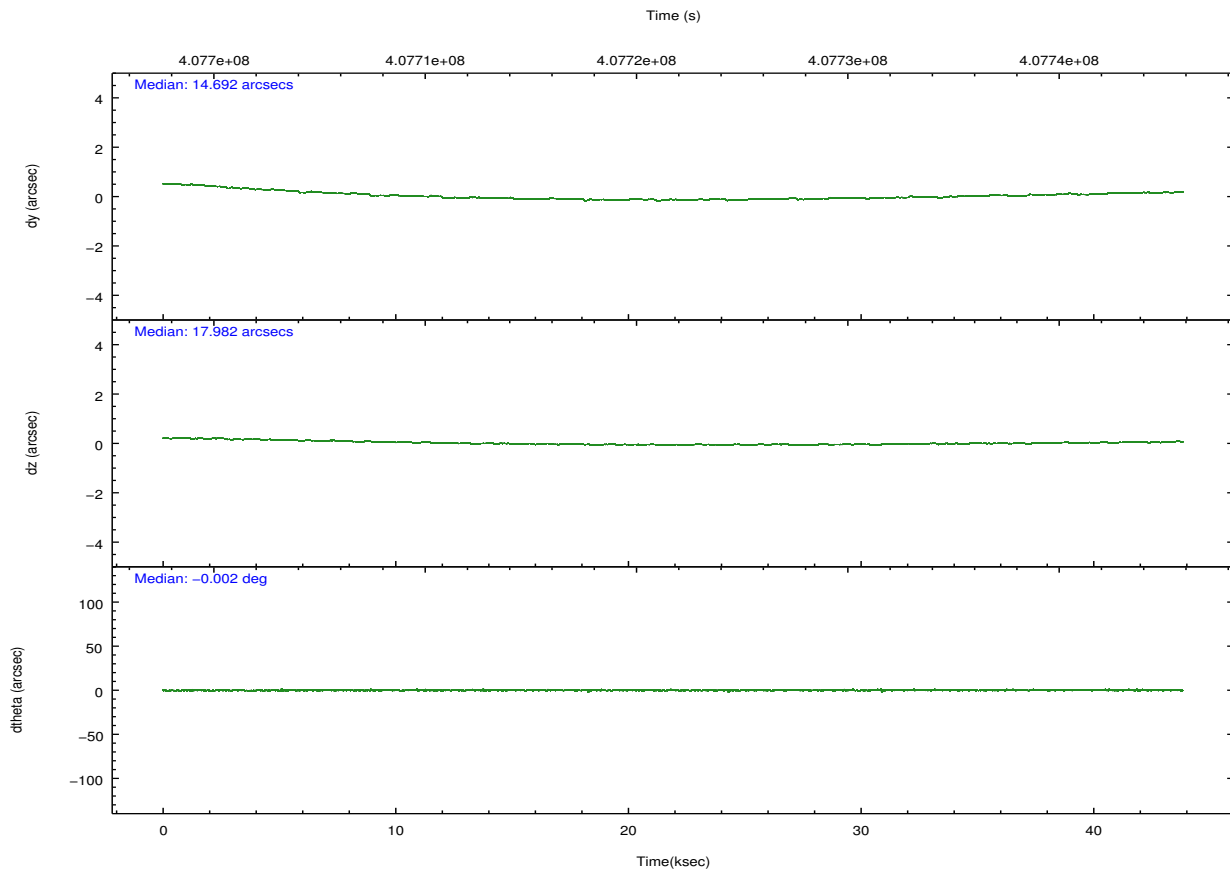
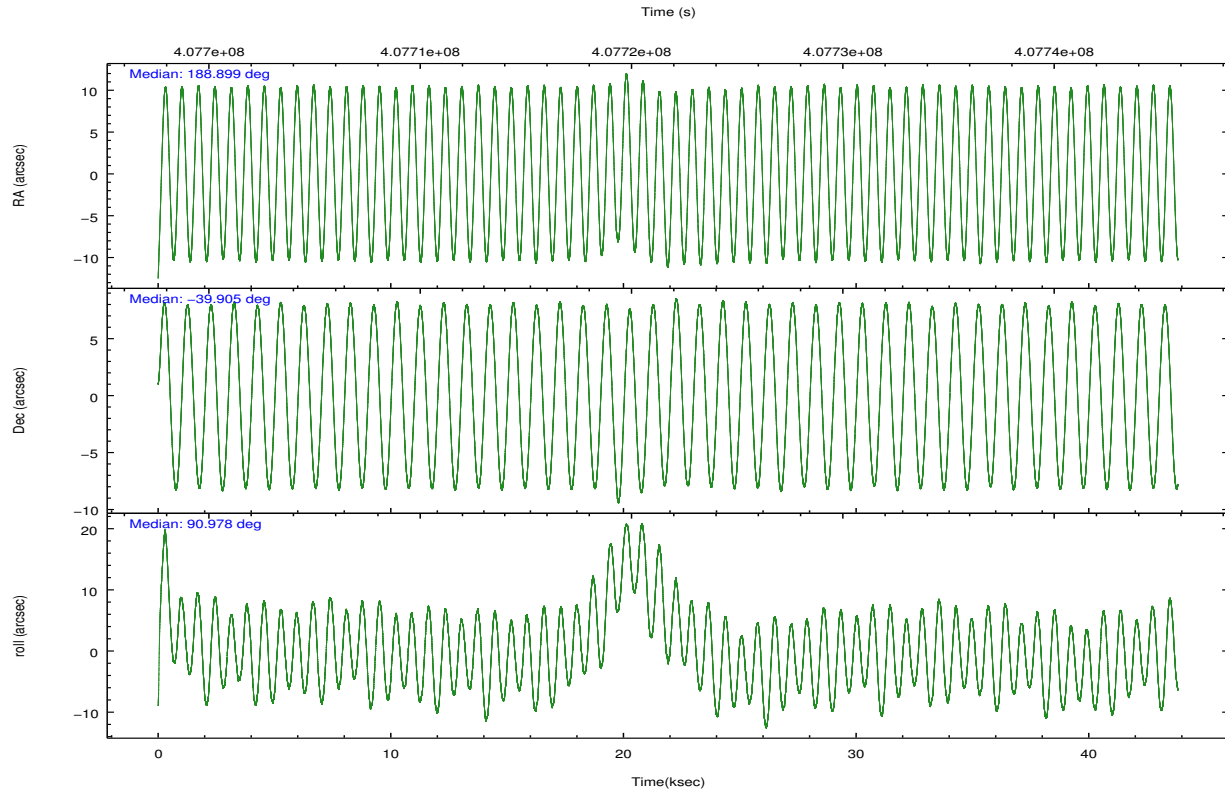
	ccd 7
grade 0 events	5555
	10%
grade 1 events	98
	0%
grade 2 events	7168
	13%
grade 3 events	4455
	8%
grade 4 events	4306
	8%
grade 5 events	4481
	8%
grade 6 events	12108
	22%
grade 7 events	14858
	28%

2.2 Compared Parameters

Parameter	Planned	Actual	Parameter	Planned	Actual
Instrument	ACIS	ACIS	Obspar format version number	7	7
Detector	ACIS-7	ACIS-7	Obspar file type	PREDICTED	ACTUAL
Grating	NONE	NONE	Obspar update status	NONE	UPDATED
Data mode	VFAINT	VFAINT	Number of optional ACIS chips dropped	0	0
Observation mode	POINTING	POINTING	On-chip summing requested	N	N
[deg] Pointing RA	188.917866	188.8990939302096	Subarray requested	CUSTOM	1/8
[deg] Pointing Dec	-39.928442	-39.90519185736064	Subarray start row	449	449
[deg] Pointing Roll	90.848301	90.9928764352472	Subarray row count	128	128
[mm] SIM focus pos	-0.684267	-0.6828225247311905	Alternating exposures requested	N	N
[mm] SIM defocus	0	0.001444936568705701	[s] Primary exposure time	0.000000	0.4
[mm] SIM translation stage pos	-190.132523	-190.1400660498719			
[mm] SIM translation stage offset	0	0.00754346686406393			
[s] Observation start time (MET)	407699989.184000	407699415.10465			
Observation start date	2010-12-02T17:58:43	2010-12-02T17:50:15			
[s] Observation end time (MET)	407743639.184000	407744603.25698			
Observation end date	2010-12-03T06:06:13	2010-12-03T06:23:23			
Read mode	TIMED	TIMED			

2.3 Aspect



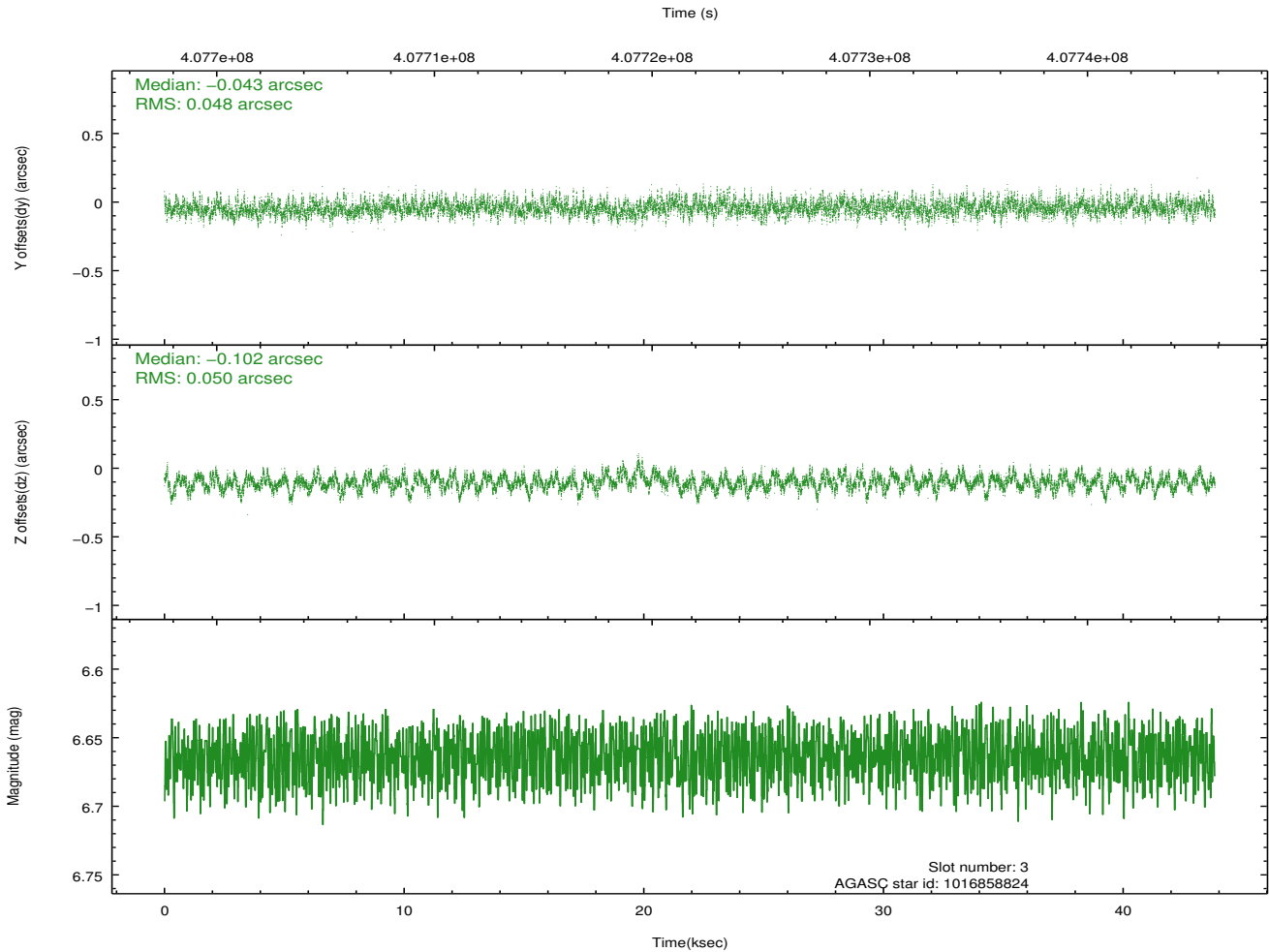
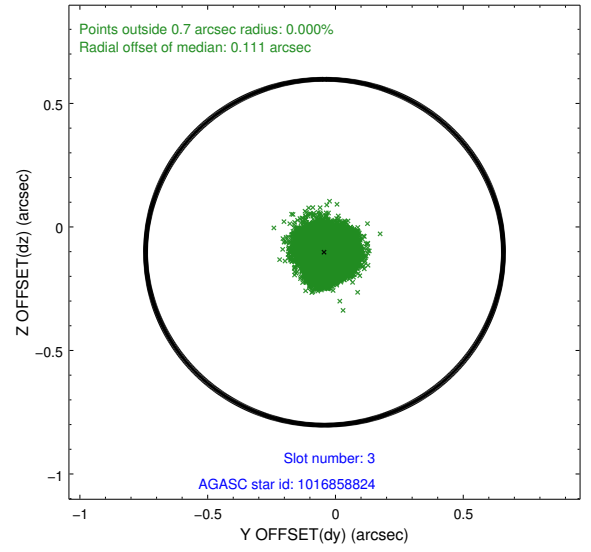
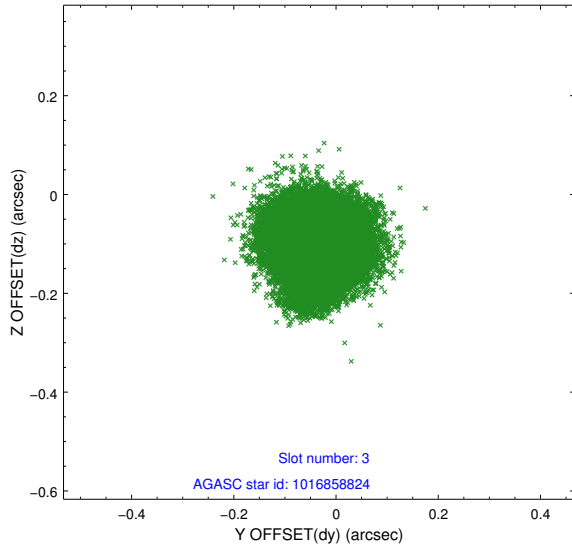


Slot Statistics

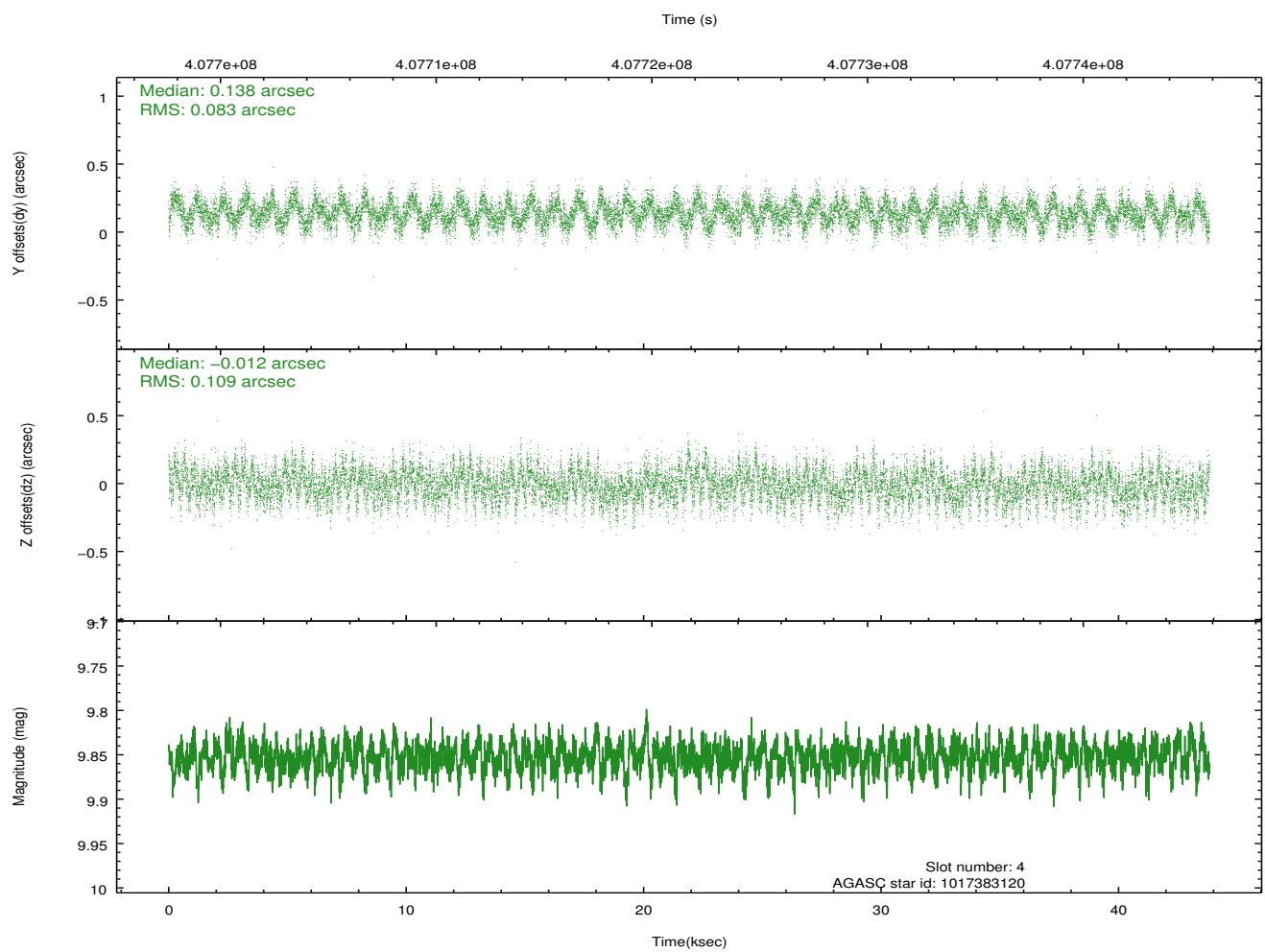
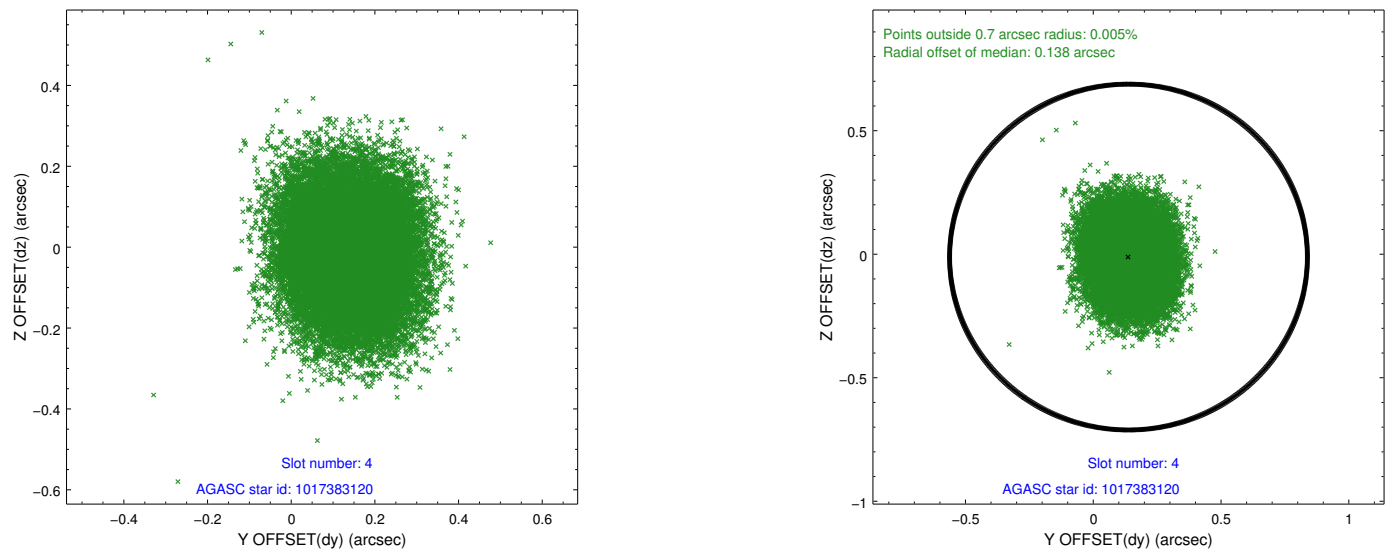
slot	status	id	mag	n_pts	med_dy	med_dz	dr1	dr2	ra	dec	mean_y	mean_z
0	FID	ACIS-S-2	6.87	10691	-0.053	-0.035	0.009	0.016	0.000000	0.000000	-767.79	-1739.48
1	FID	ACIS-S-4	6.95	10691	0.167	0.035	0.008	0.015	0.000000	0.000000	2145.75	169.00
2	FID	ACIS-S-5	6.98	10691	-0.147	0.010	0.010	0.027	0.000000	0.000000	-1820.68	162.75
3	GUIDE	1016858824	6.66	21381	-0.043	-0.102	0.075	0.118	189.158395	-39.326292	2157.01	-701.16
4	GUIDE	1017383120	9.85	21346	0.138	-0.012	0.147	0.235	189.661872	-39.945421	-99.13	-2051.98
5	GUIDE	1017383856	8.42	21372	-0.203	-0.178	0.099	0.160	189.725196	-39.655865	938.90	-2251.23
6	GUIDE	1017389424	7.32	21380	-0.100	0.416	0.093	0.147	189.670980	-39.392364	1890.59	-2122.51
7	GUIDE	1017396648	6.27	21380	0.200	-0.111	0.100	0.172	189.004306	-39.869498	208.84	-241.28

2.4 Star Slots

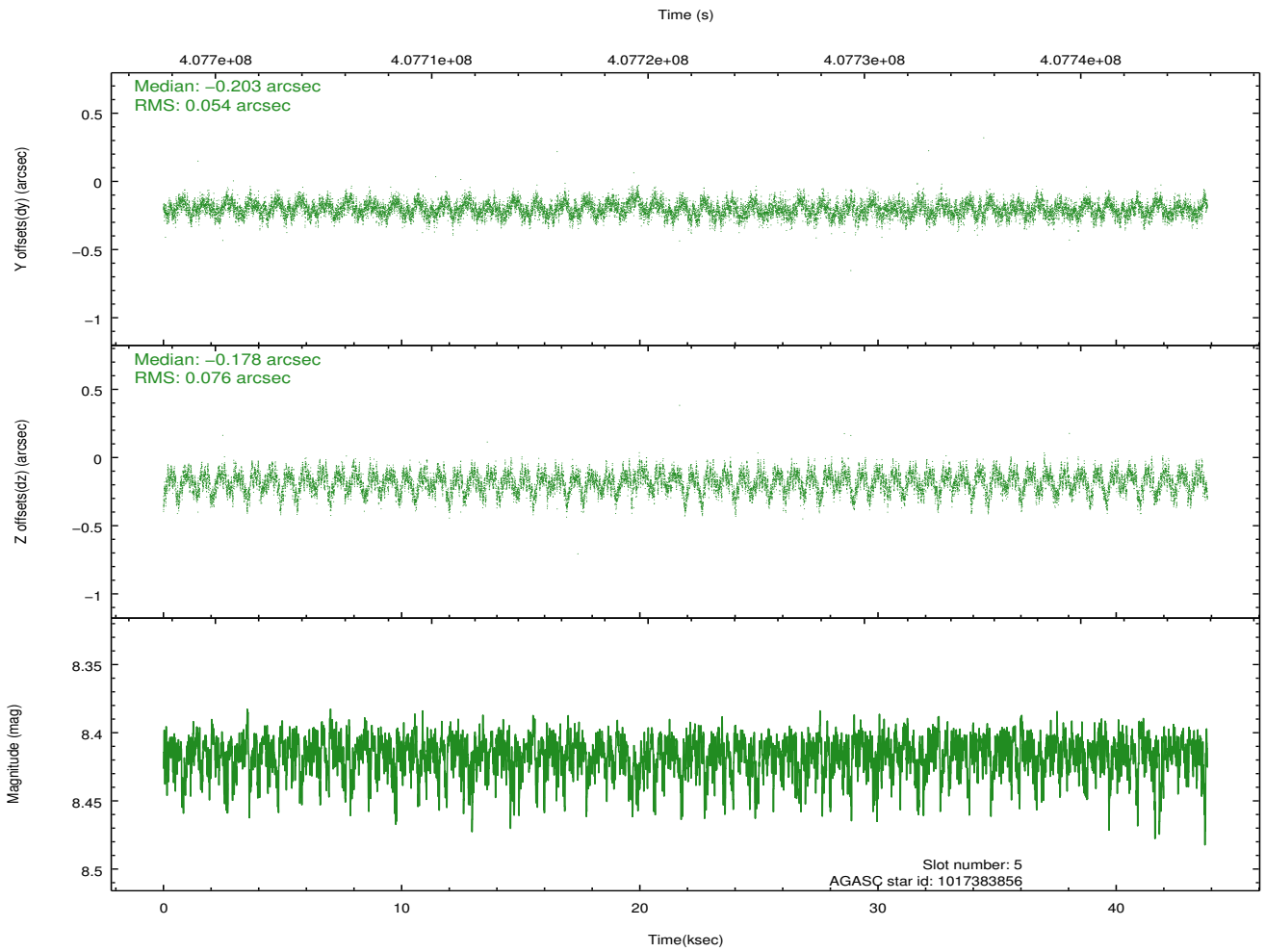
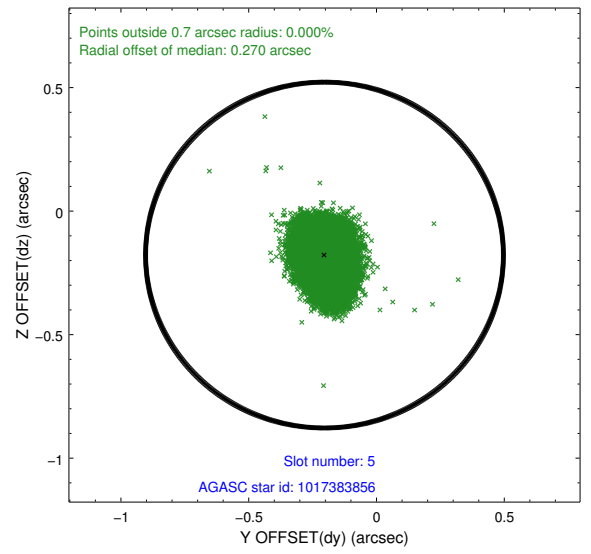
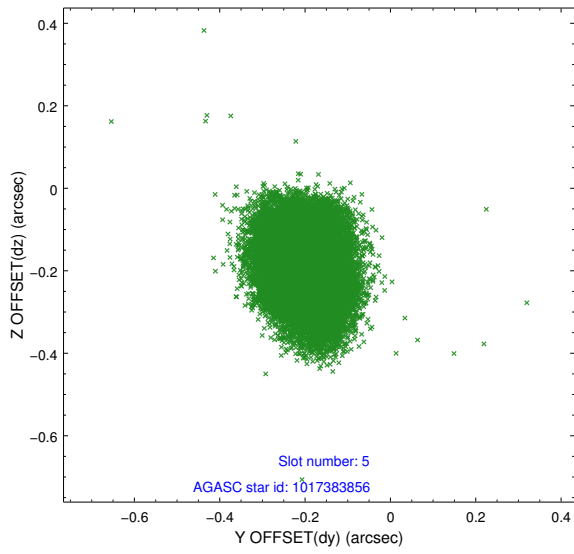
2.4.1 Slot 3



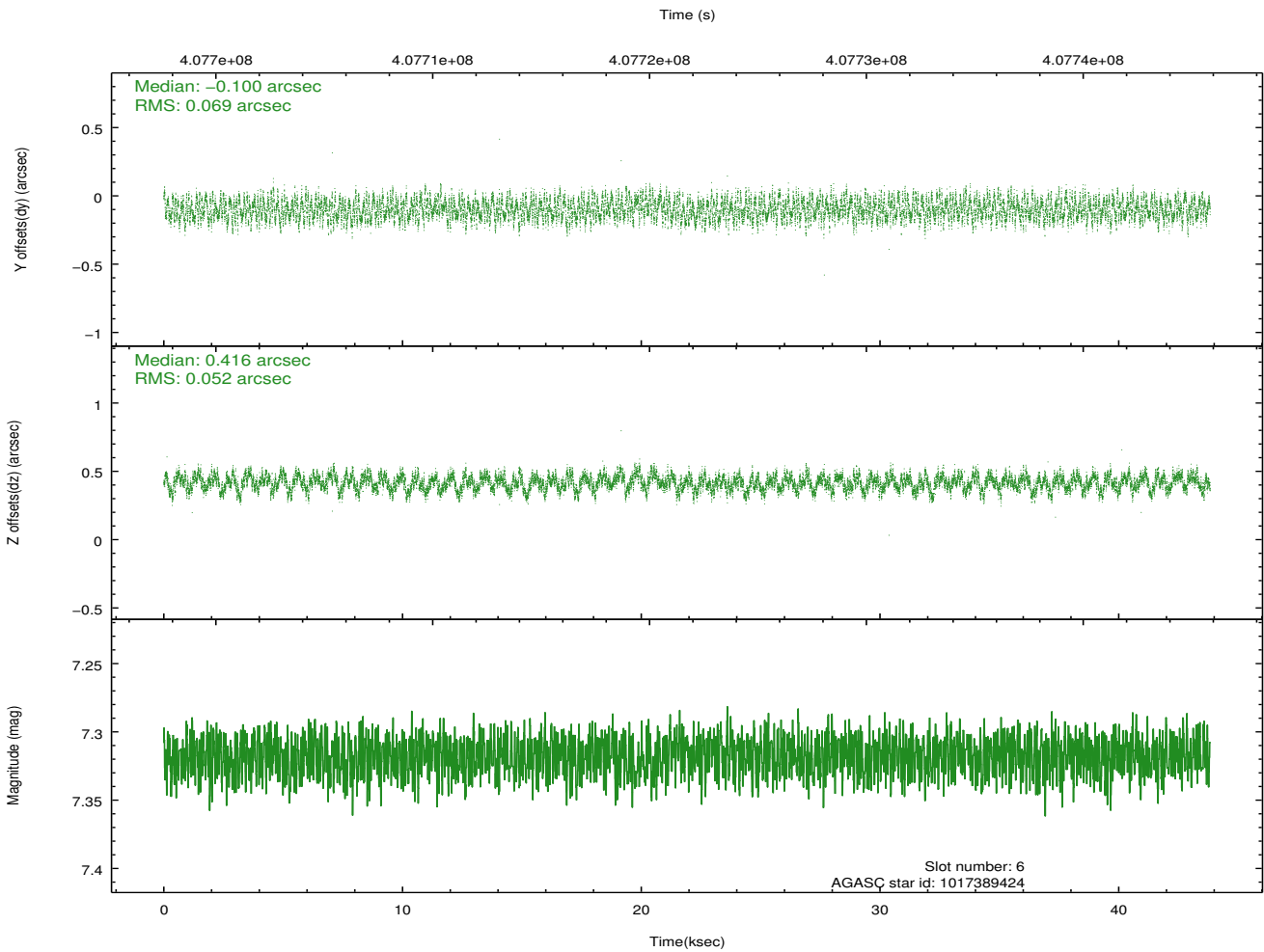
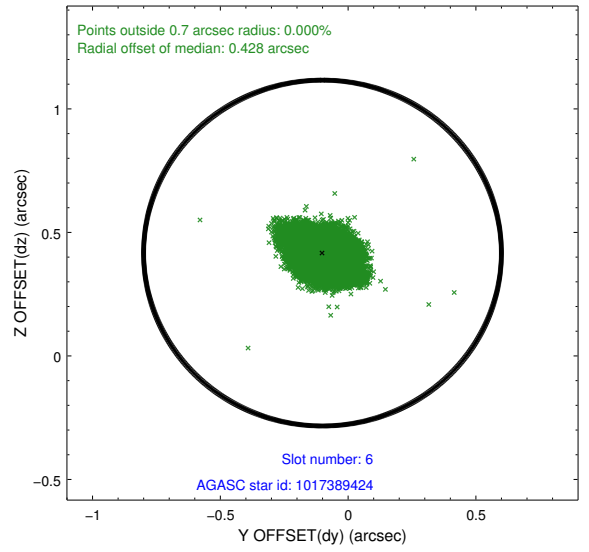
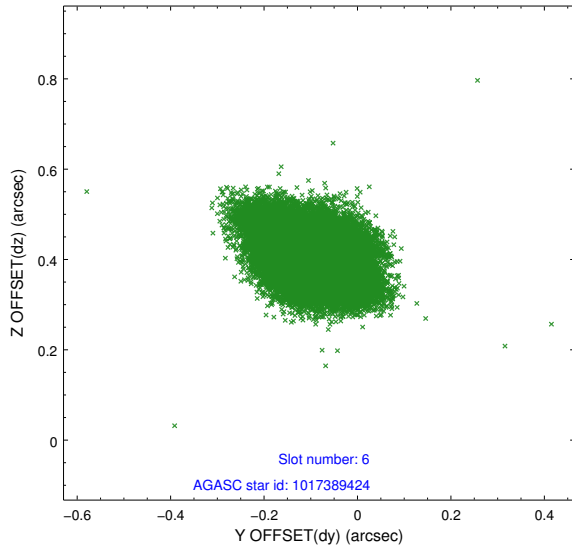
2.4.2 Slot 4



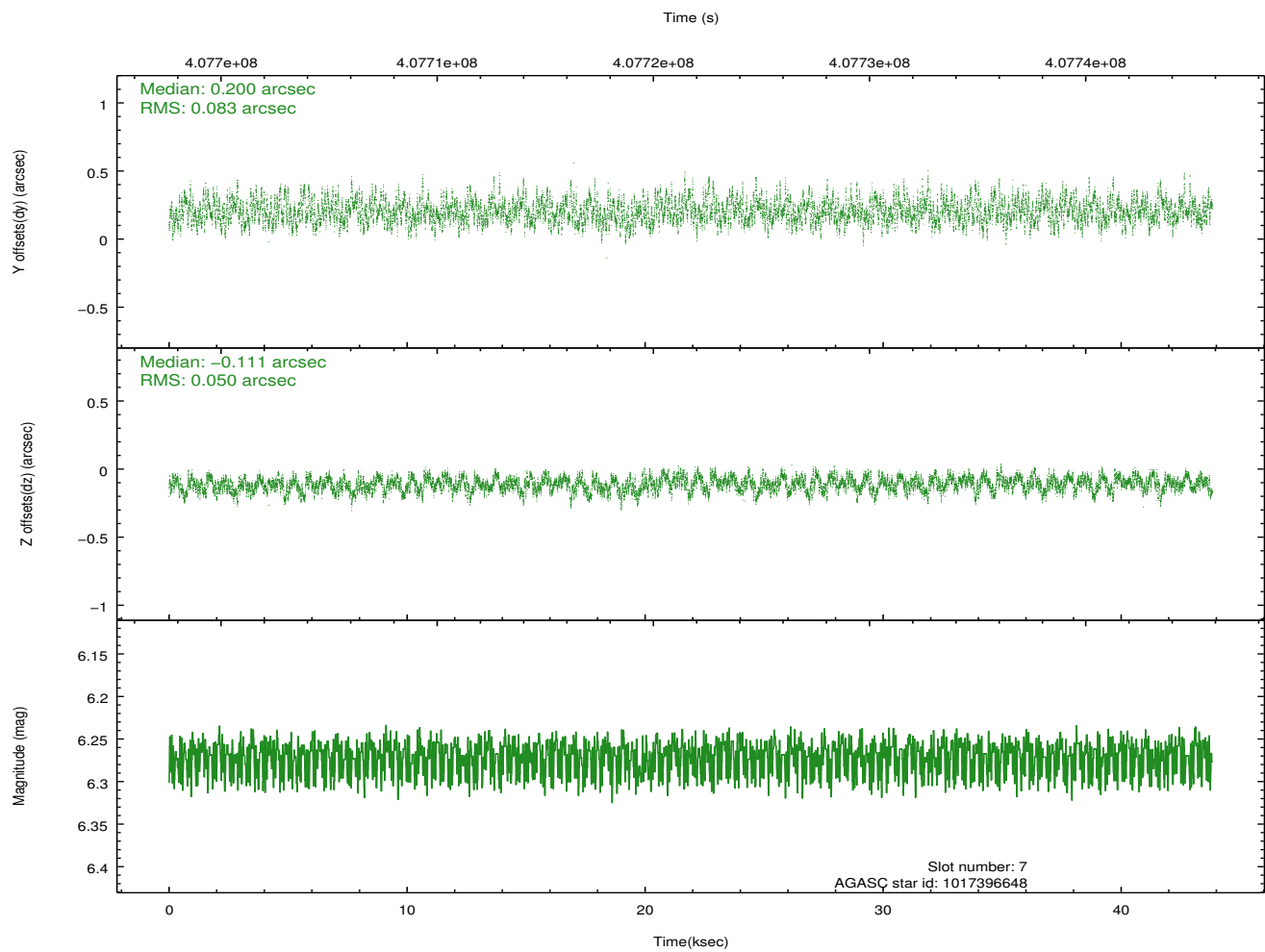
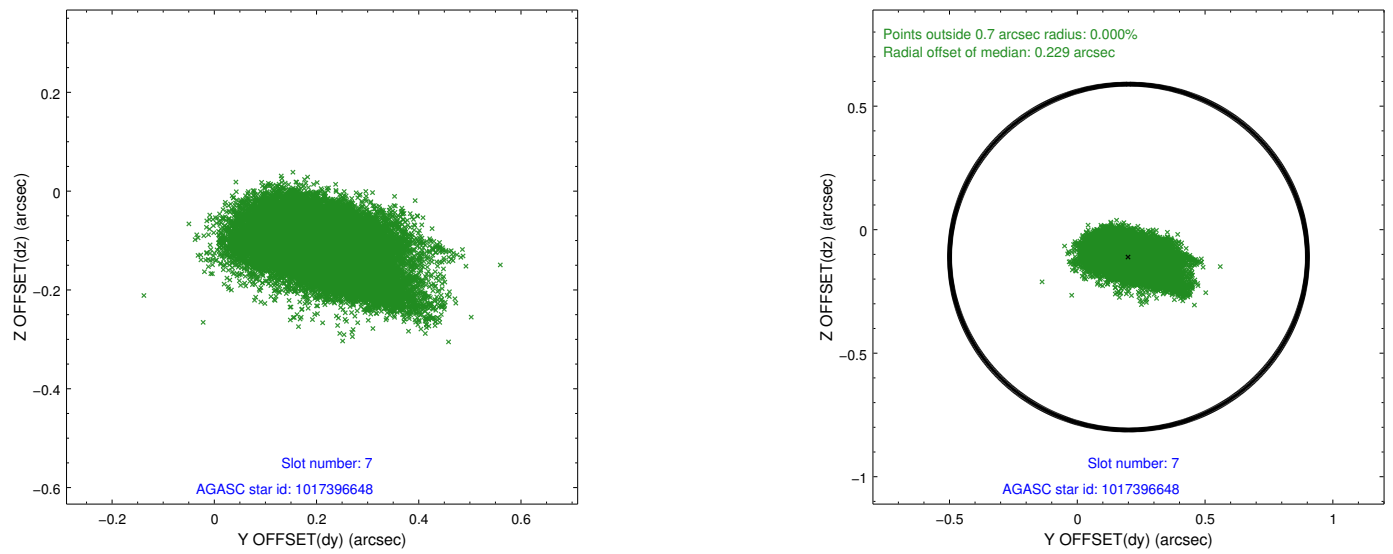
2.4.3 Slot 5



2.4.4 Slot 6

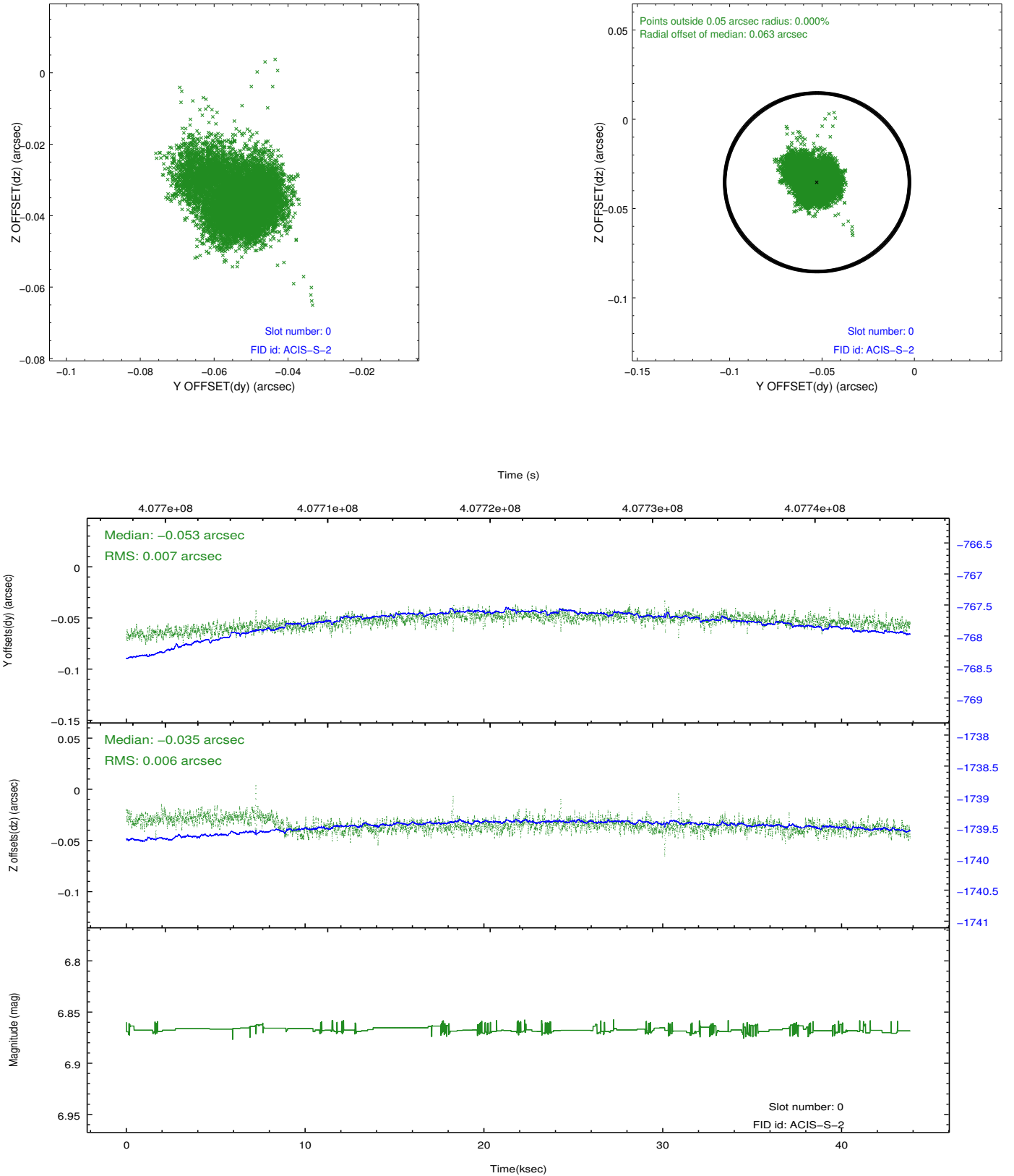


2.4.5 Slot 7

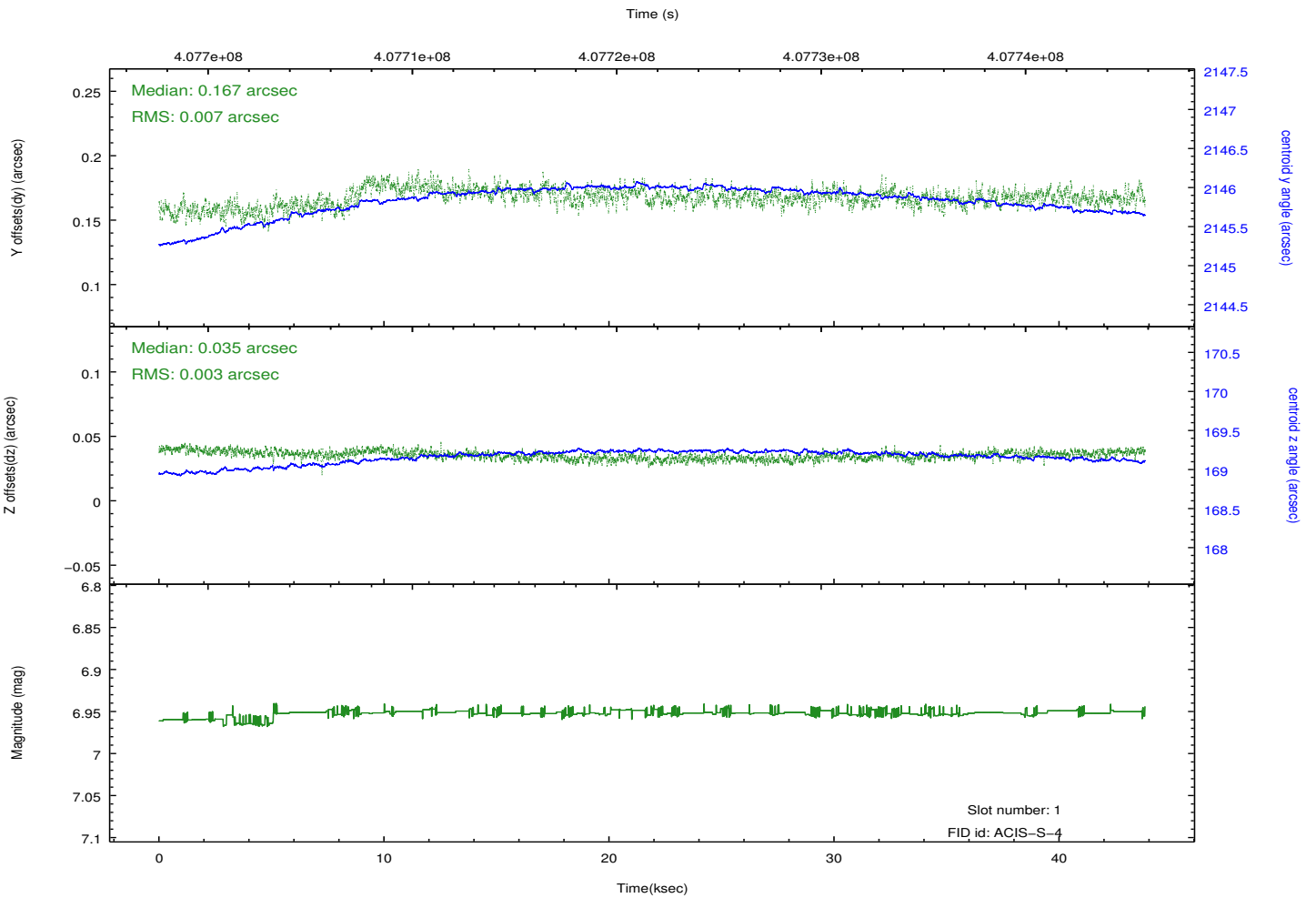
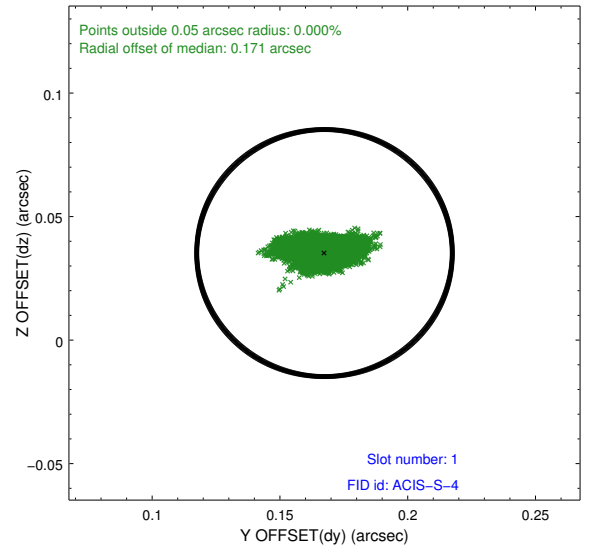
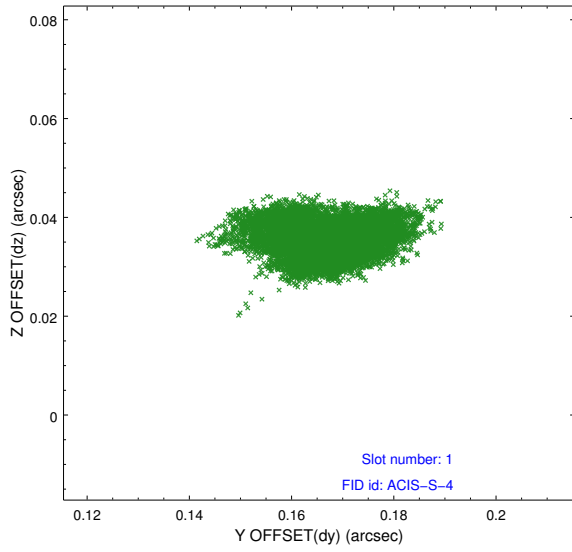


2.5 FID Slots

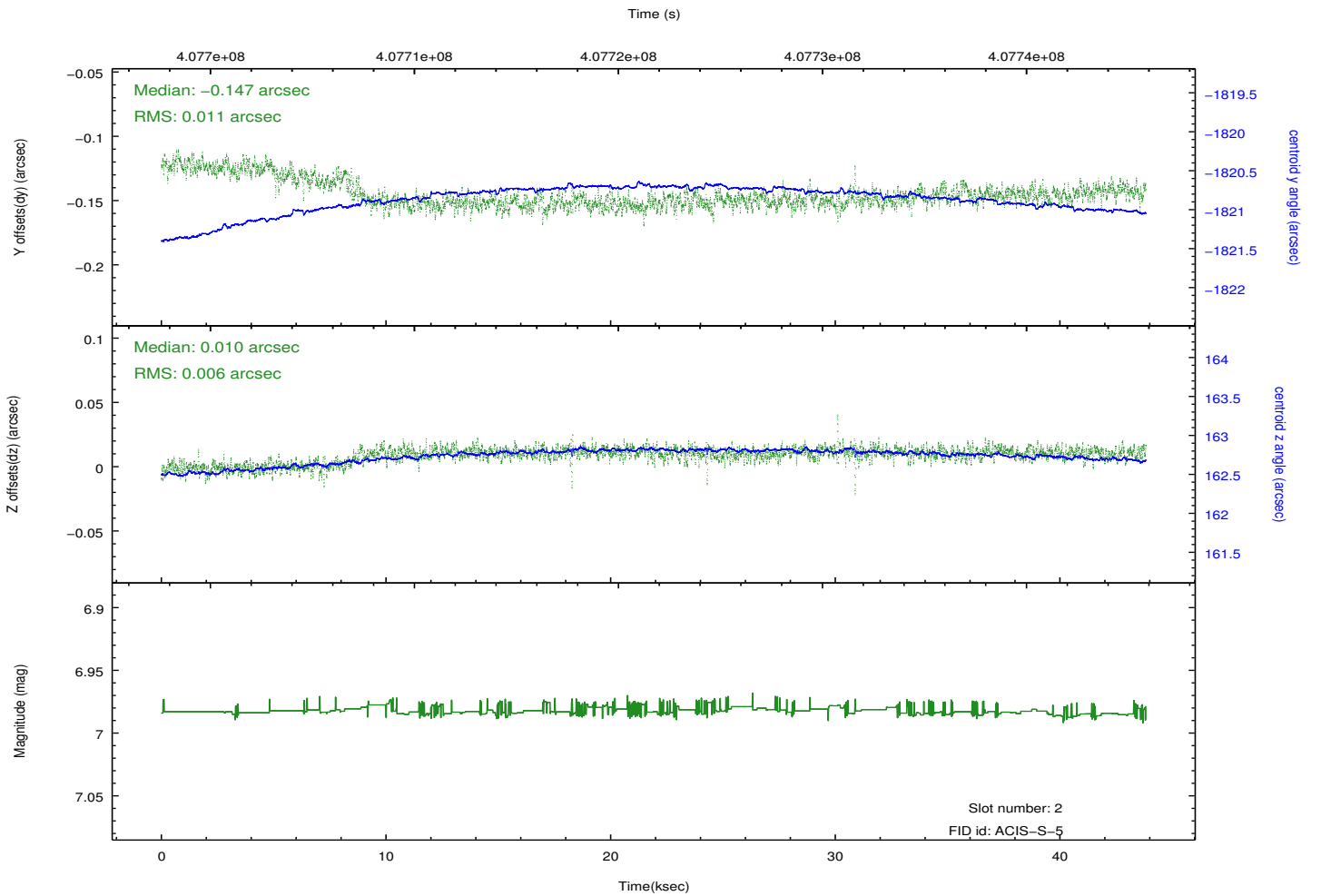
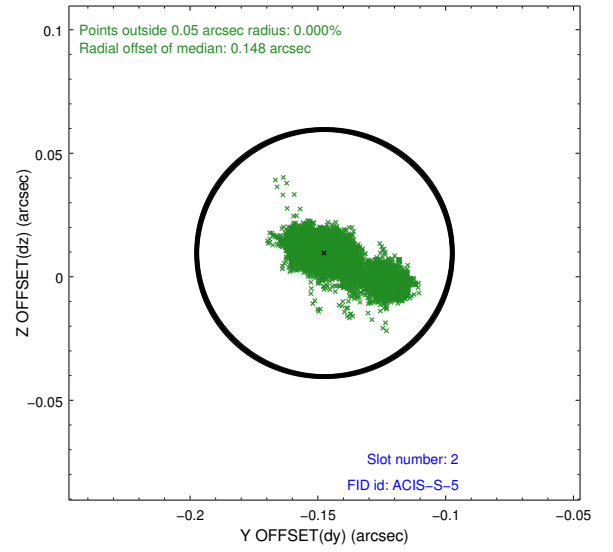
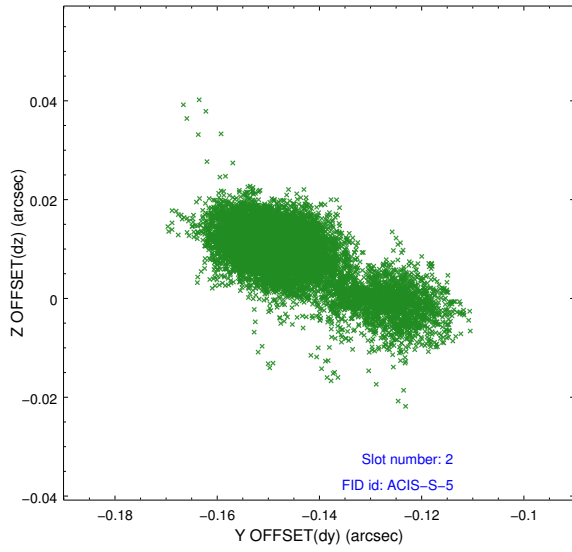
2.5.1 Slot 0



2.5.2 Slot 1



2.5.3 Slot 2



A Summary

A.1 Status

V&V Scientist	Jen Lauer
V&V Date (YYYY-MM-DD)	2012.07.17
V&V Edition	1
V&V Disposition and Status	OK
V&V Charge Time	43.658797397733

A.2 Comments

Joint Proposal: HST