

V&V Reference Report

L2 ASCDS Version : 8.4.3

Observation 12372 - L2 Version 2
Chandra X-Ray Center

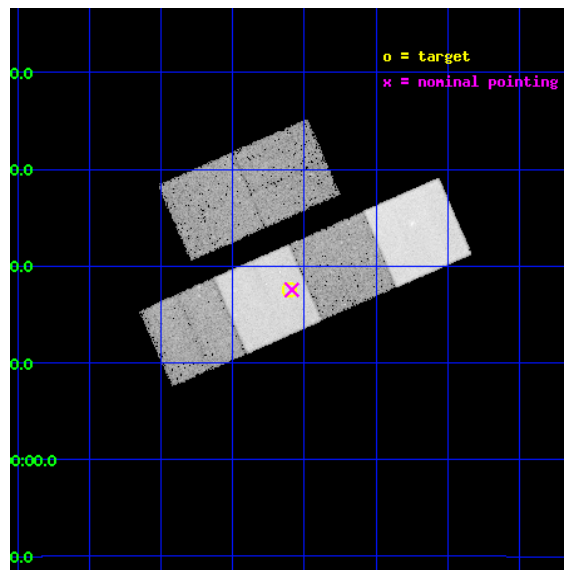
L2 Processing Date : Mar 18 2012

Contents

1	Front	2
2	OBI	3
2.1	OBI	3
2.1.1	Images	3
2.1.2	Bias	3
2.1.3	Parameters	4
2.1.4	Events	4
2.2	Compared Parameters	5
2.3	Aspect	6
2.4	Star Slots	9
2.4.1	Slot 3	9
2.4.2	Slot 4	10
2.4.3	Slot 5	11
2.4.4	Slot 6	12
2.4.5	Slot 7	13
2.5	FID Slots	14
2.5.1	Slot 0	14
2.5.2	Slot 1	15
2.5.3	Slot 2	16
A	Summary	17
A.1	Status	17
A.2	Comments	17

1 Front

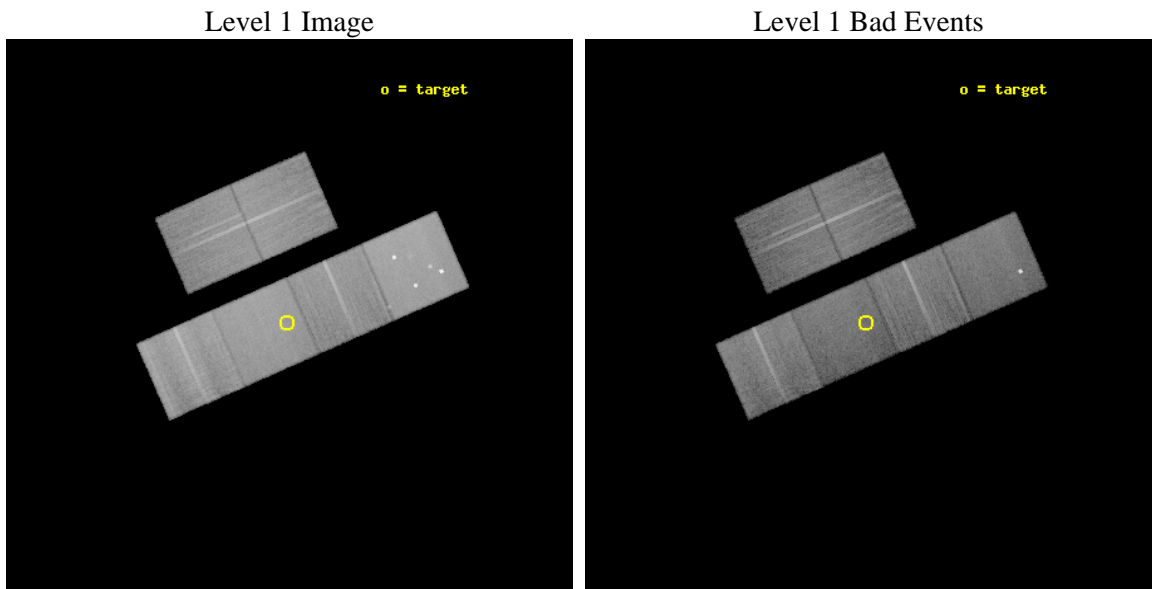
seq_num	200706	Sequence number
obs_id	12372	Observation id
title	X-rays from Planetary Nebulae: Unveiling Binarity, Magnetic Fields, and Wind Collisions	Proposal title
observer	Dr. Joel Kastner	Principal investigator
object	NGC 6772	Source name
dtcycle	0	
cycle	P	events from which exps? Prim/Second/Both
ra_targ	288.651667	Observer's specified target RA [deg]
dec_targ	-2.706944	Observer's specified target Dec [deg]
ra_nom	288.64686486995	Nominal RA [deg]
dec_nom	-2.707627240501	Nominal Dec [deg]
roll_nom	156.28462485905	Nominal Roll [deg]
revision	2	Processing version of data
ontime	29743.18129319	Sum of GTIs [s]
livetime	29366.555222462	Livetime [s]
ontime2	29743.222333193	Sum of GTIs [s]
ontime3	29733.335102081	Sum of GTIs [s]
ontime5	29743.140253186	Sum of GTIs [s]
ontime6	29743.099213183	Sum of GTIs [s]
ontime7	29743.18129319	Sum of GTIs [s]
ontime8	29743.017133176	Sum of GTIs [s]
l2events	303692	Number of level 2 events



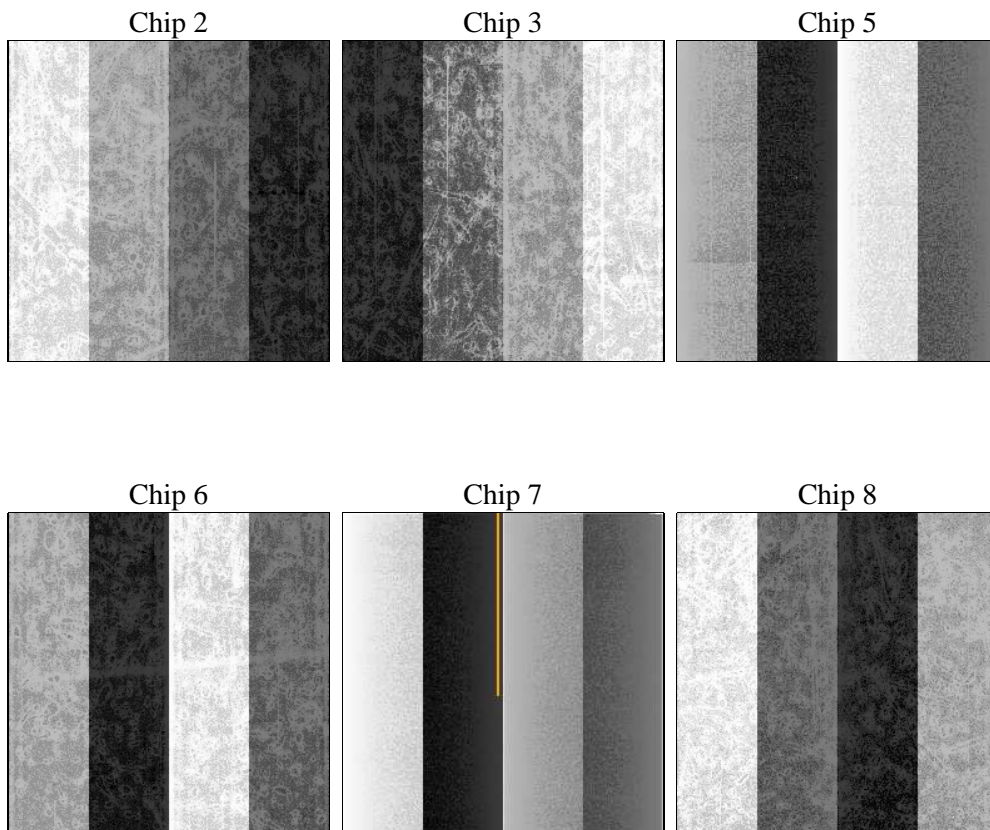
2 OBI

2.1 OBI

2.1.1 Images



2.1.2 Bias



2.1.3 Parameters

obi_num	0	Obi number	sched_exp_time	29691.323000	[s] Scheduled observation exposure time
ascdsver	8.4.3	Processing system revision	ontime	29743.18129319	Sum of GTIs [s]
caldbver	4.4.8	 	ontime2	29743.222333193	Sum of GTIs [s]
date	2012-03-18T18:51:13	Date and time of file creation	ontime3	29733.335102081	Sum of GTIs [s]
revision	2	Processing version of data	ontime5	29743.140253186	Sum of GTIs [s]
			ontime6	29743.099213183	Sum of GTIs [s]
			ontime7	29743.18129319	Sum of GTIs [s]
			ontime8	29743.017133176	Sum of GTIs [s]
			l1events	1298308	Number of level 1 events

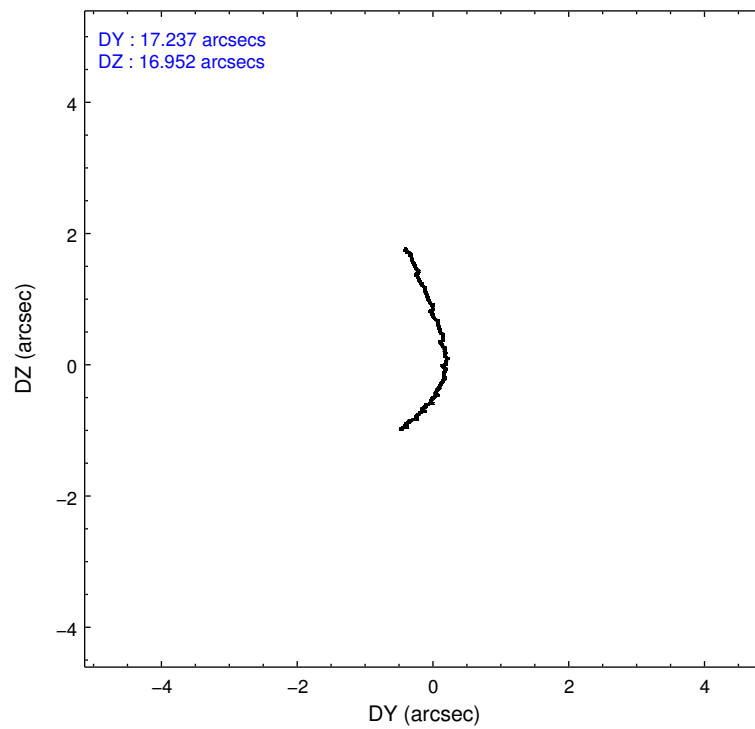
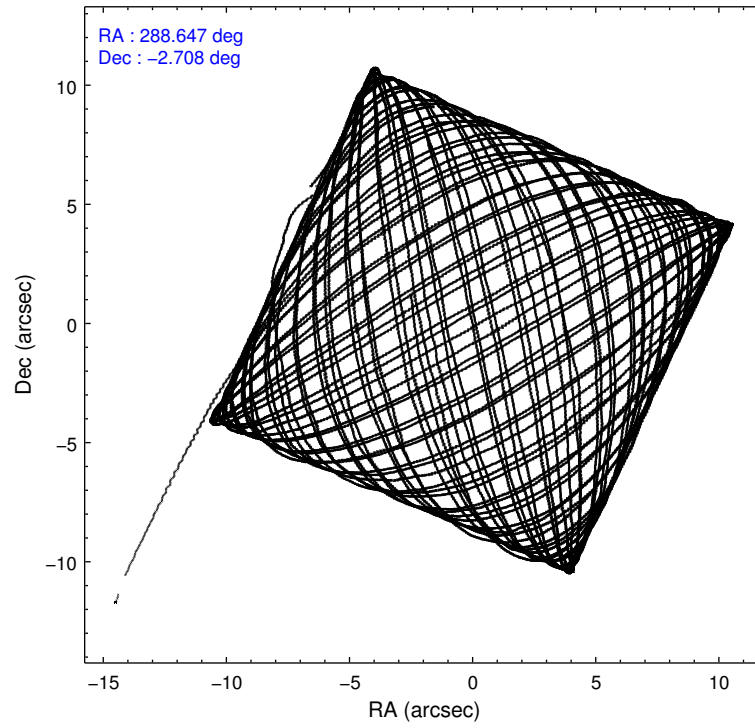
2.1.4 Events

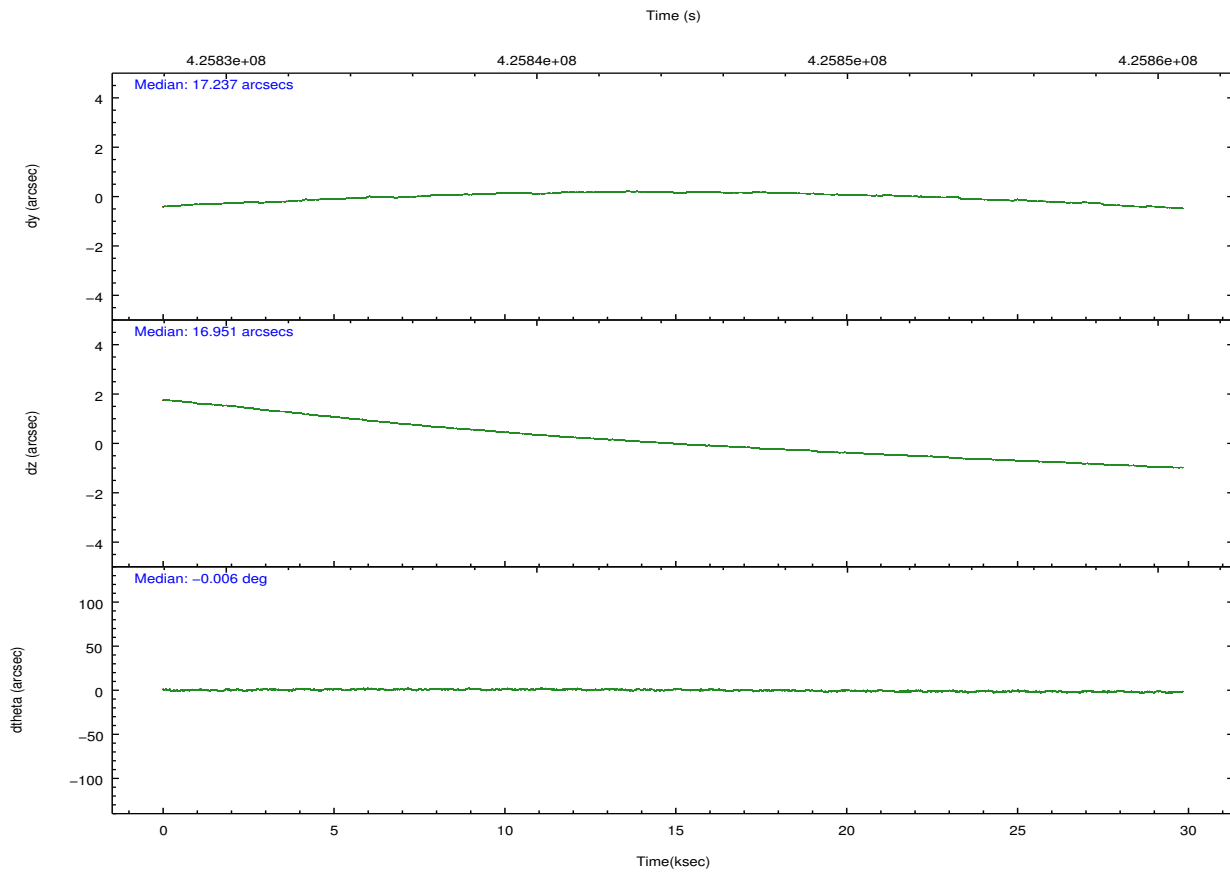
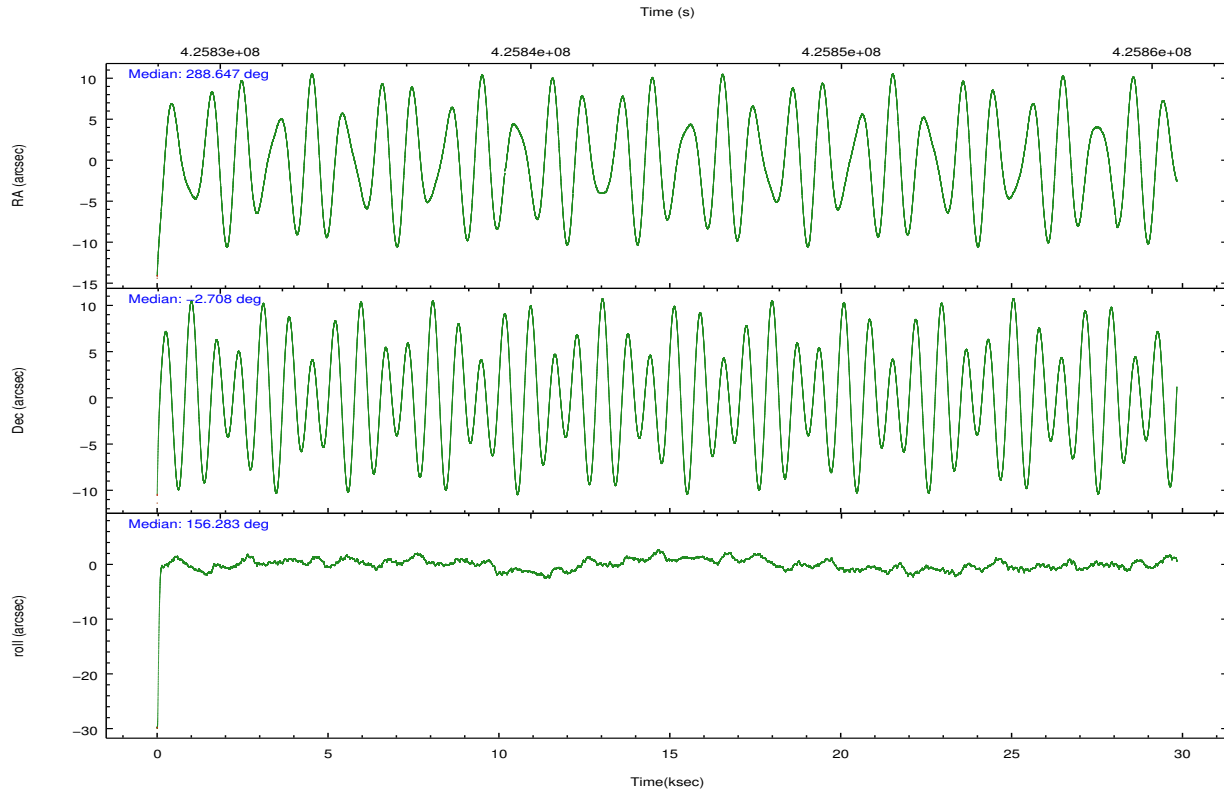
	ccd 2	ccd 3	ccd 5	ccd 6	ccd 7	ccd 8		ccd 2	ccd 3	ccd 5	ccd 6	ccd 7	ccd 8
level 1 events	184535	165627	300631	180804	230182	236529	grade 0 events	6998	6811	23527	7767	9230	18440
rejected events	164497	146774	148599	158985	127130	173379		3%	4%	7%	4%	4%	7%
rejected %	89%	88%	49%	87%	55%	73%	grade 1 events	95	87	468	92	280	177
								0%	0%	0%	0%	0%	0%
							grade 2 events	4955	4114	44432	4820	21072	14690
								2%	2%	14%	2%	9%	6%
							grade 3 events	2000	2042	5061	2264	9280	6854
								1%	1%	1%	1%	4%	2%
							grade 4 events	2152	2052	4950	2217	9043	6302
								1%	1%	1%	1%	3%	2%
							grade 5 events	7619	8679	23726	8671	23820	12322
								4%	5%	7%	4%	10%	5%
							grade 6 events	3937	3836	74100	4762	54451	16866
								2%	2%	24%	2%	23%	7%
							grade 7 events	156779	138006	124367	150211	103006	160878
								84%	83%	41%	83%	44%	68%

2.2 Compared Parameters

Parameter	Planned	Actual	Parameter	Planned	Actual
Instrument	ACIS	ACIS	Obspar format version number	7	7
Detector	ACIS-235678	ACIS-235678	Obspar file type	PREDICTED	ACTUAL
Grating	NONE	NONE	Obspar update status	NONE	UPDATED
Data mode	VFAINT	VFAINT	CCD I0 on	N	N
Observation mode	POINTING	POINTING	CCD I1 on	N	N
[deg] Pointing RA	288.674029	288.646864869948	CCD I2 on	O4	Y
[deg] Pointing Dec	-2.704252	-2.70762724050102	CCD I3 on	O5	Y
[deg] Pointing Roll	156.129293	156.2846248590481	CCD S0 on	N	N
[mm] SIM focus pos	-0.684267	-0.6828225247311905	CCD S1 on	O3	Y
[mm] SIM defocus	0	0.001444936568705701	CCD S2 on	O1	Y
[mm] SIM translation stage pos	-190.132523	-190.1425803651734	CCD S3 on	Y	Y
[mm] SIM translation stage offset	0	0.01005778216563158	CCD S4 on	O2	Y
[s] Observation start time (MET)	425829617.184000	425828452.15653	CCD S5 on	N	N
Observation start date	2011-06-30T13:59:11	2011-06-30T13:40:52	Number of optional ACIS chips dropped	0	0
[s] Observation end time (MET)	425859309.184000	425859534.77065	On-chip summing requested	N	N
Observation end date	2011-06-30T22:14:03	2011-06-30T22:18:54	Subarray requested	NONE	NONE
Read mode	TIMED	TIMED	Alternating exposures requested	N	N
			[s] Primary exposure time	0.000000	3.2

2.3 Aspect



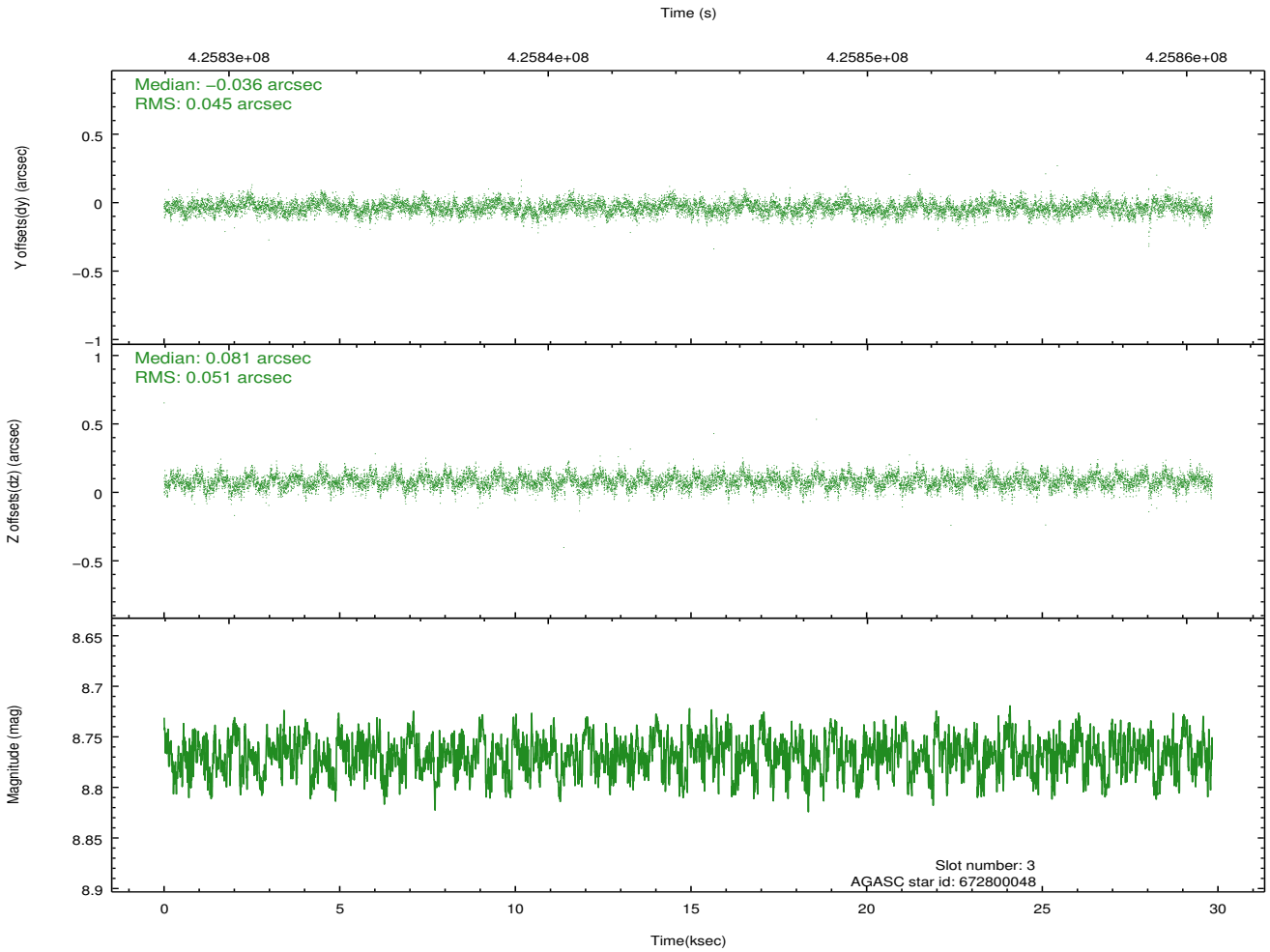
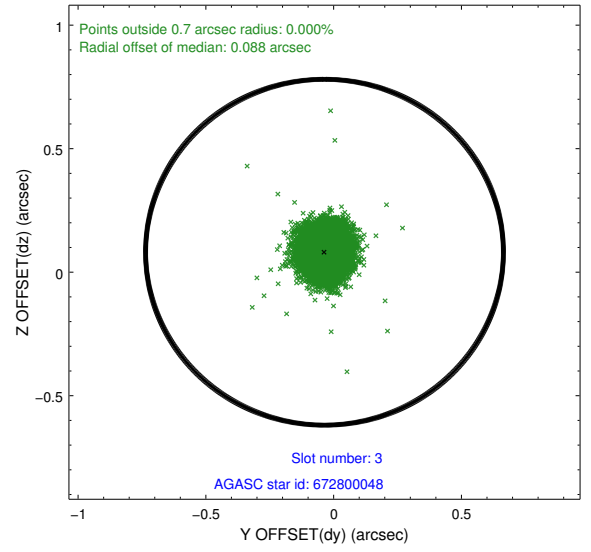
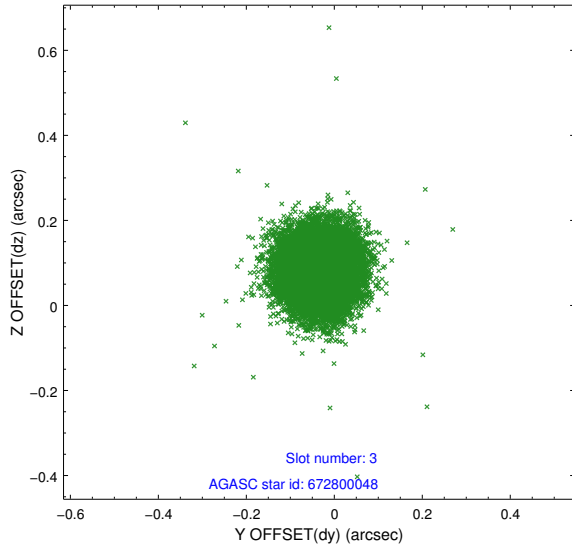


Slot Statistics

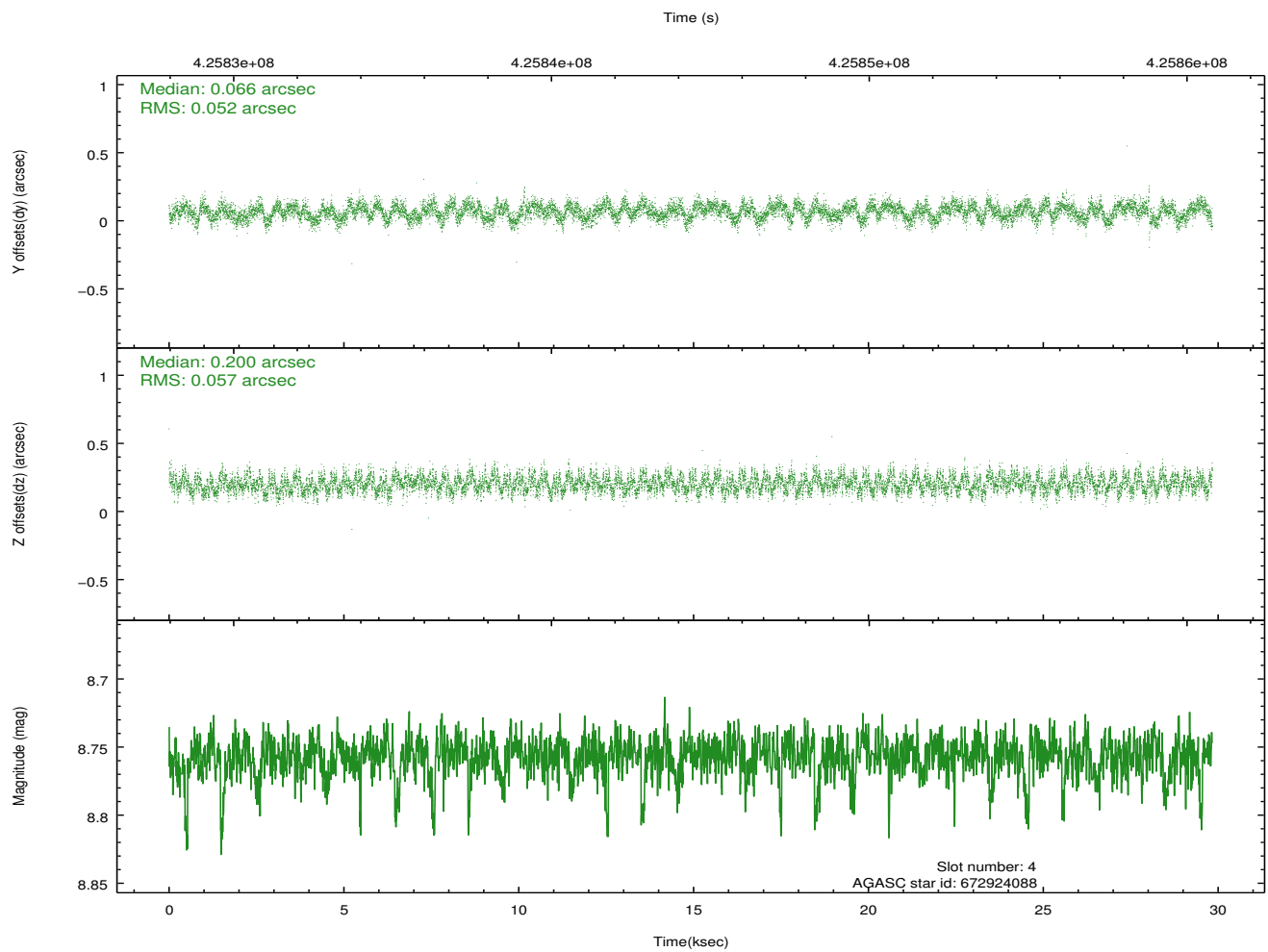
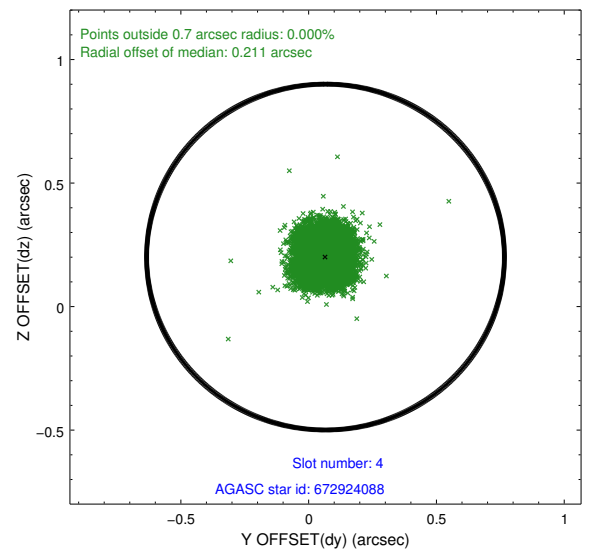
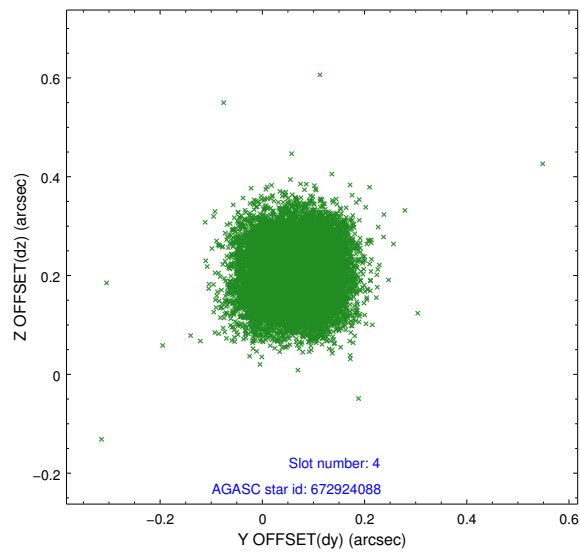
slot	status	id	mag	n_pts	med_dy	med_dz	dr1	dr2	ra	dec	mean_y	mean_z
0	FID	ACIS-S-1	7.00	7278	0.114	-0.108	0.029	0.065	0.000000	0.000000	925.95	-1734.19
1	FID	ACIS-S-5	7.05	7277	-0.120	0.087	0.015	0.033	0.000000	0.000000	-1823.27	163.44
2	FID	ACIS-S-6	7.15	7278	-0.014	0.035	0.037	0.072	0.000000	0.000000	391.26	807.45
3	GUIDE	672800048	8.77	14548	-0.036	0.081	0.071	0.115	288.624324	-2.414411	585.90	-881.55
4	GUIDE	672924088	8.76	14543	0.066	0.200	0.082	0.130	289.066983	-2.665698	-1235.97	-698.46
5	GUIDE	672804856	8.45	14547	-0.097	-0.151	0.064	0.104	287.914746	-3.065330	1969.63	2294.19
6	GUIDE	672936368	7.28	14553	-0.093	-0.113	0.057	0.094	288.861986	-3.113884	-1214.49	1075.35
7	GUIDE	672927024	8.60	14549	0.159	-0.019	0.074	0.119	289.260706	-2.997356	-2355.73	112.02

2.4 Star Slots

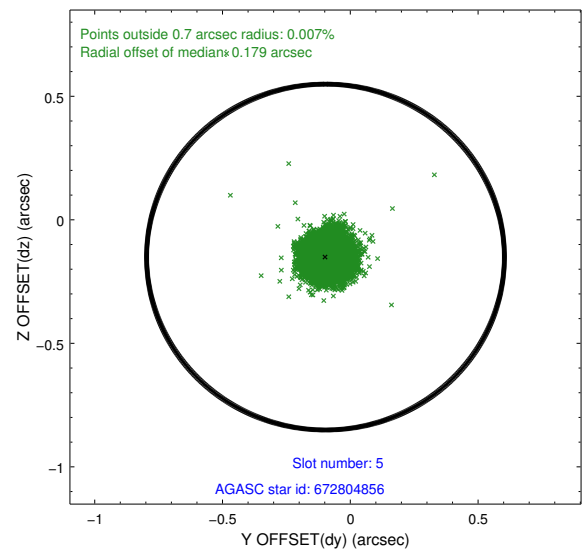
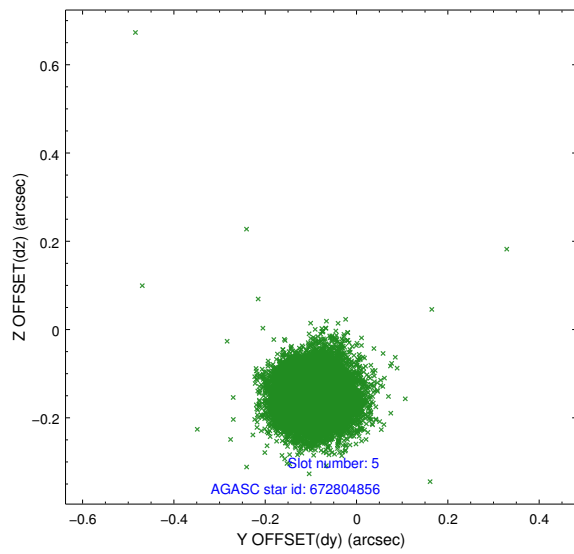
2.4.1 Slot 3



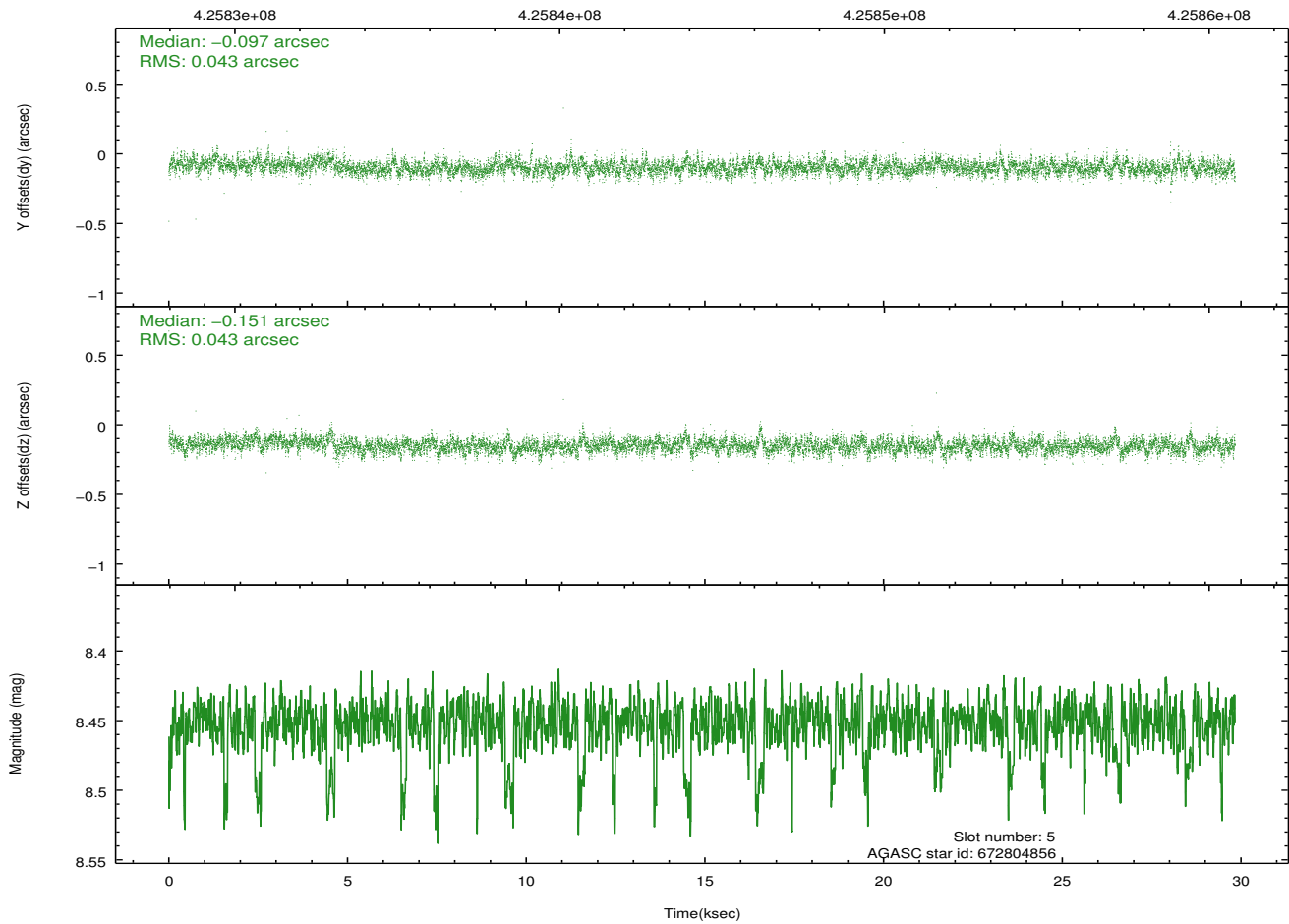
2.4.2 Slot 4



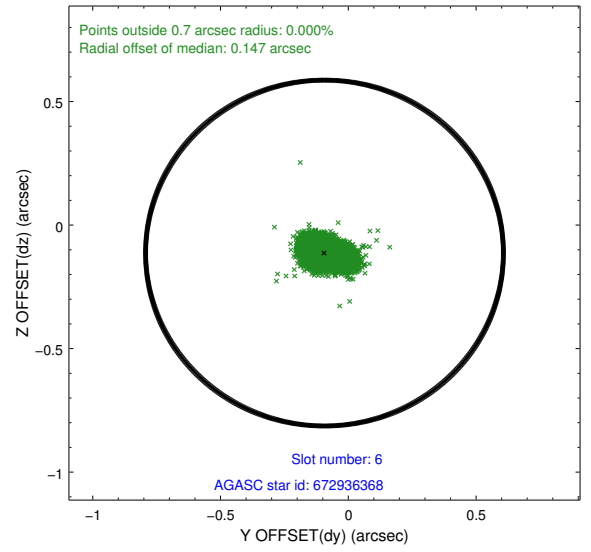
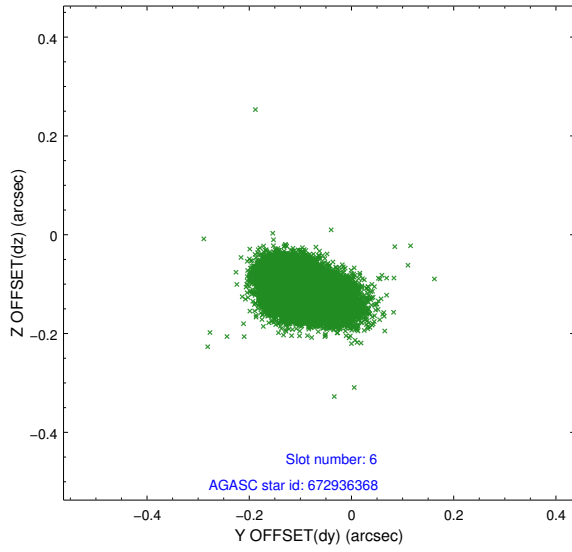
2.4.3 Slot 5



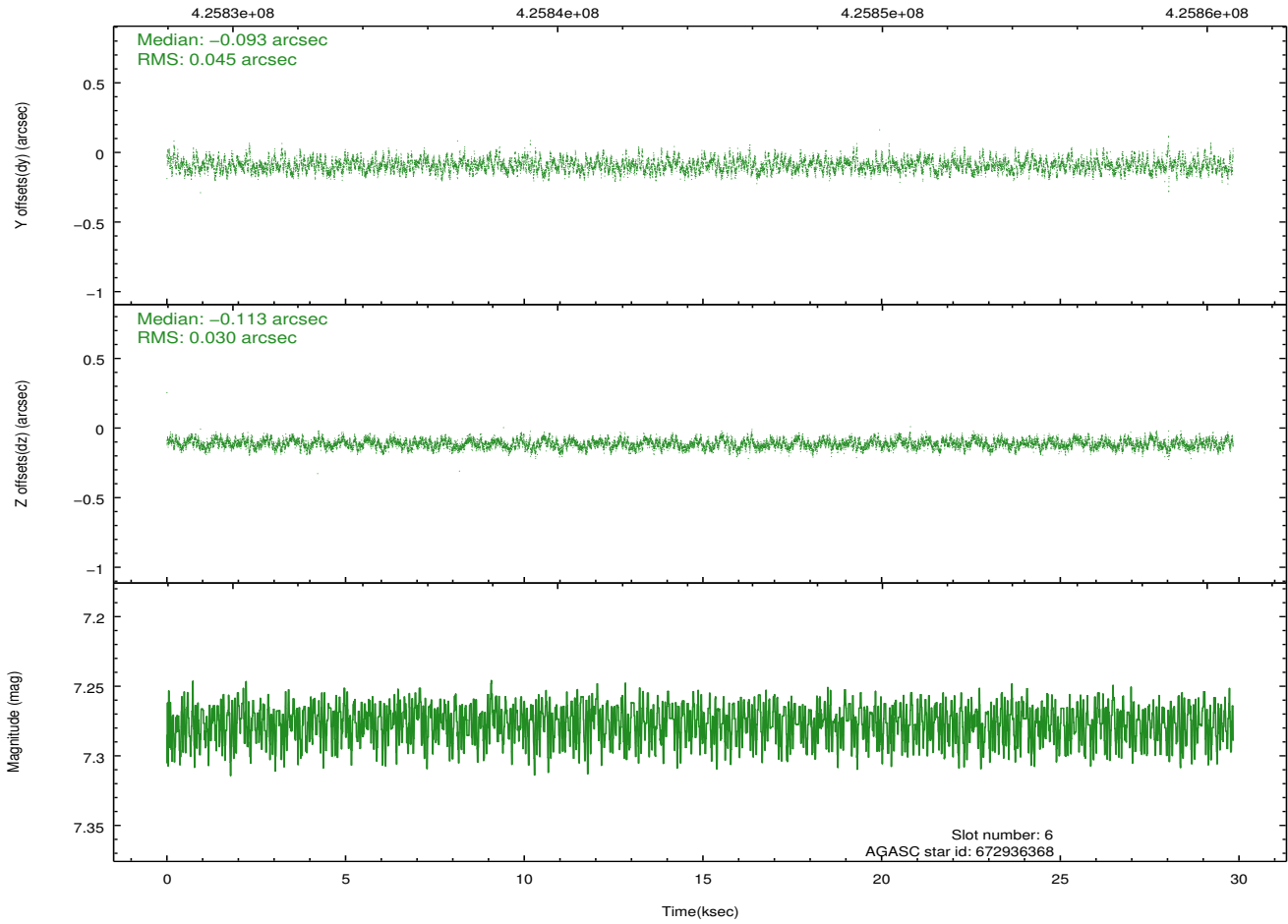
Time (s)



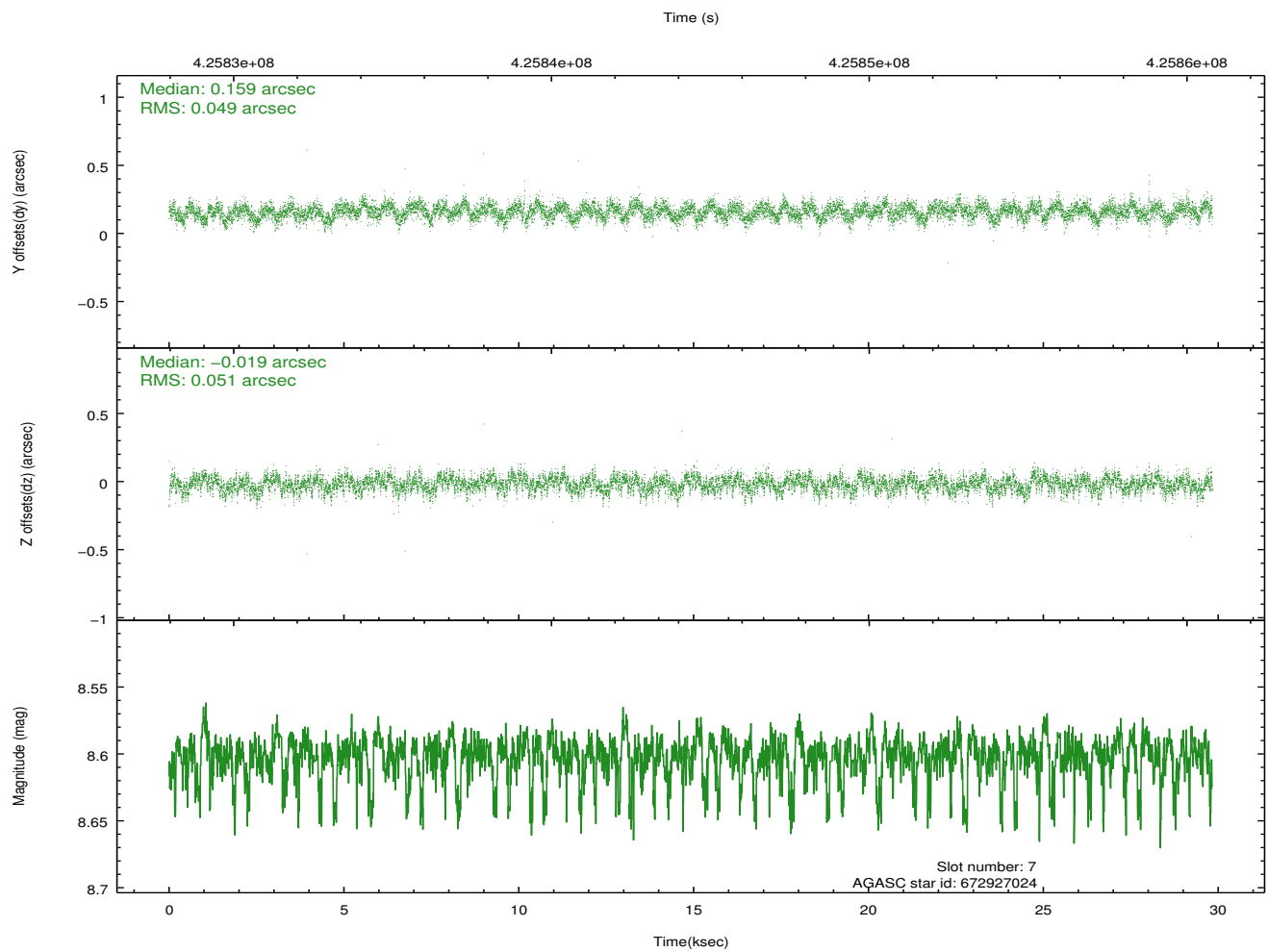
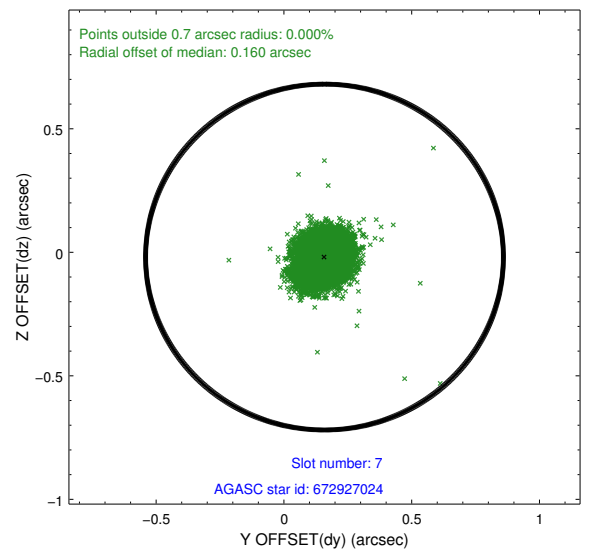
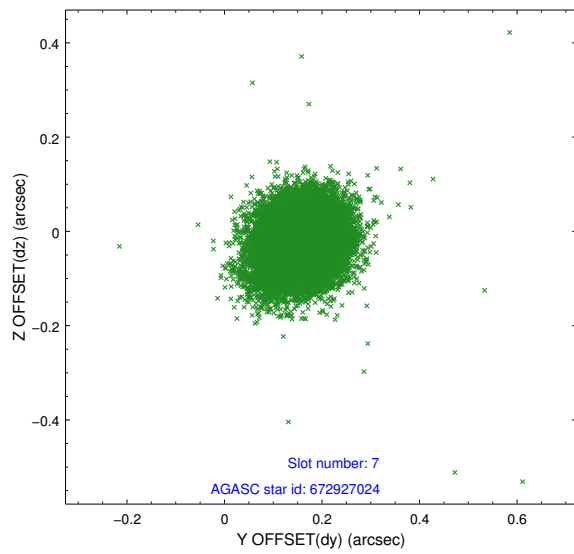
2.4.4 Slot 6



Time (s)

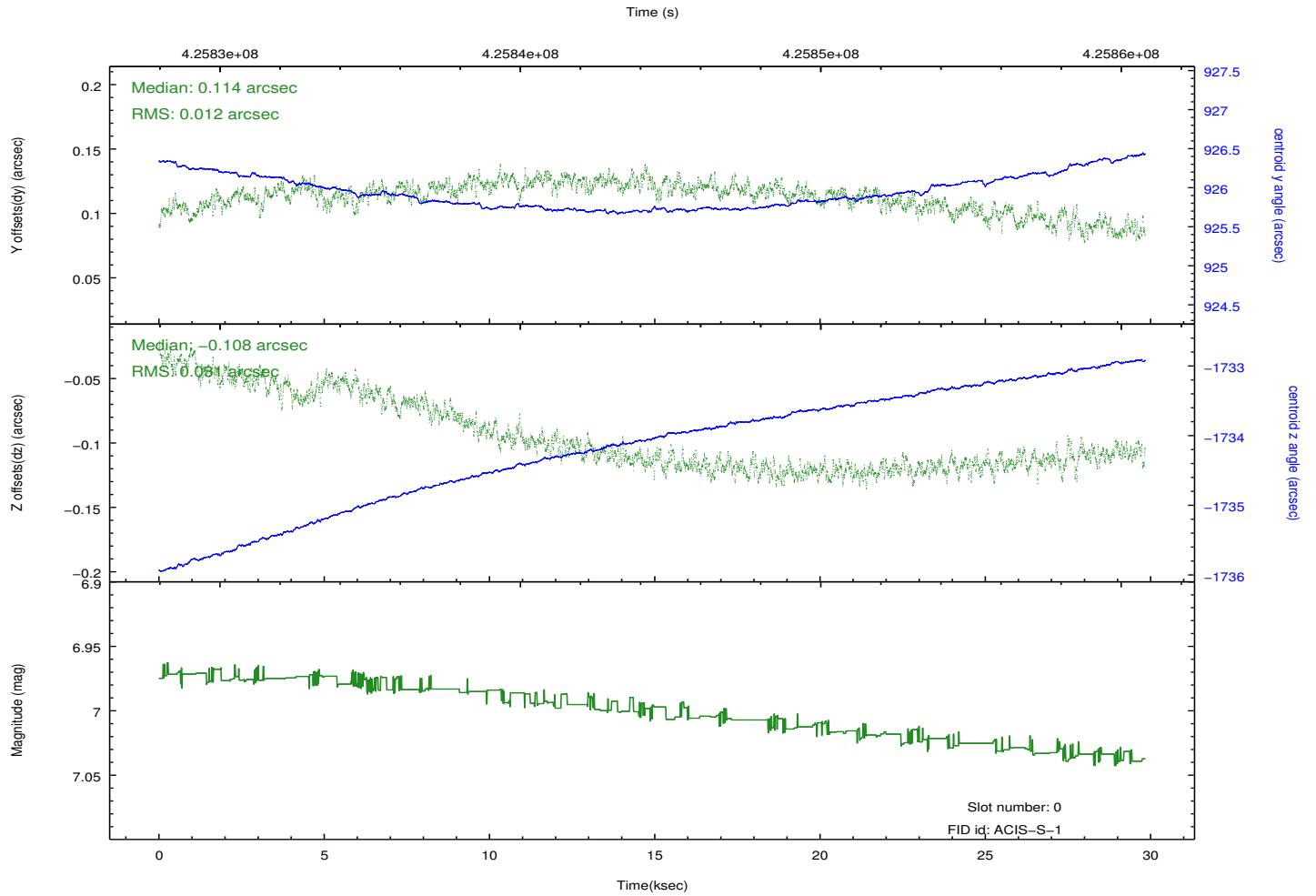
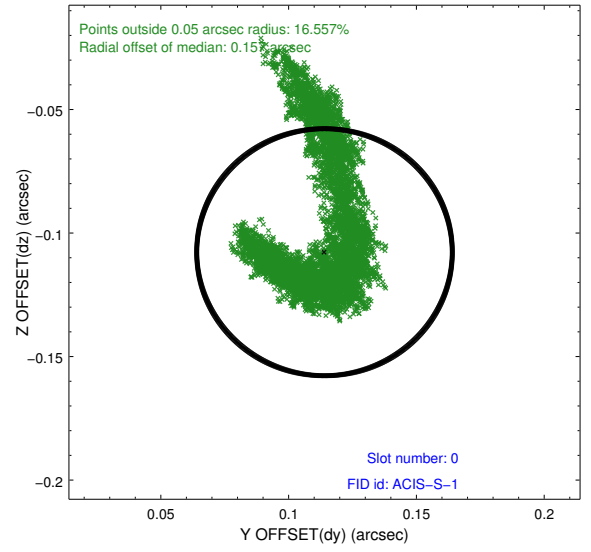
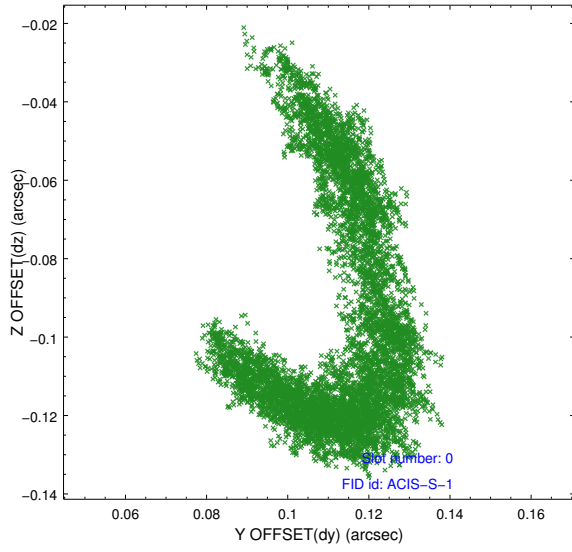


2.4.5 Slot 7

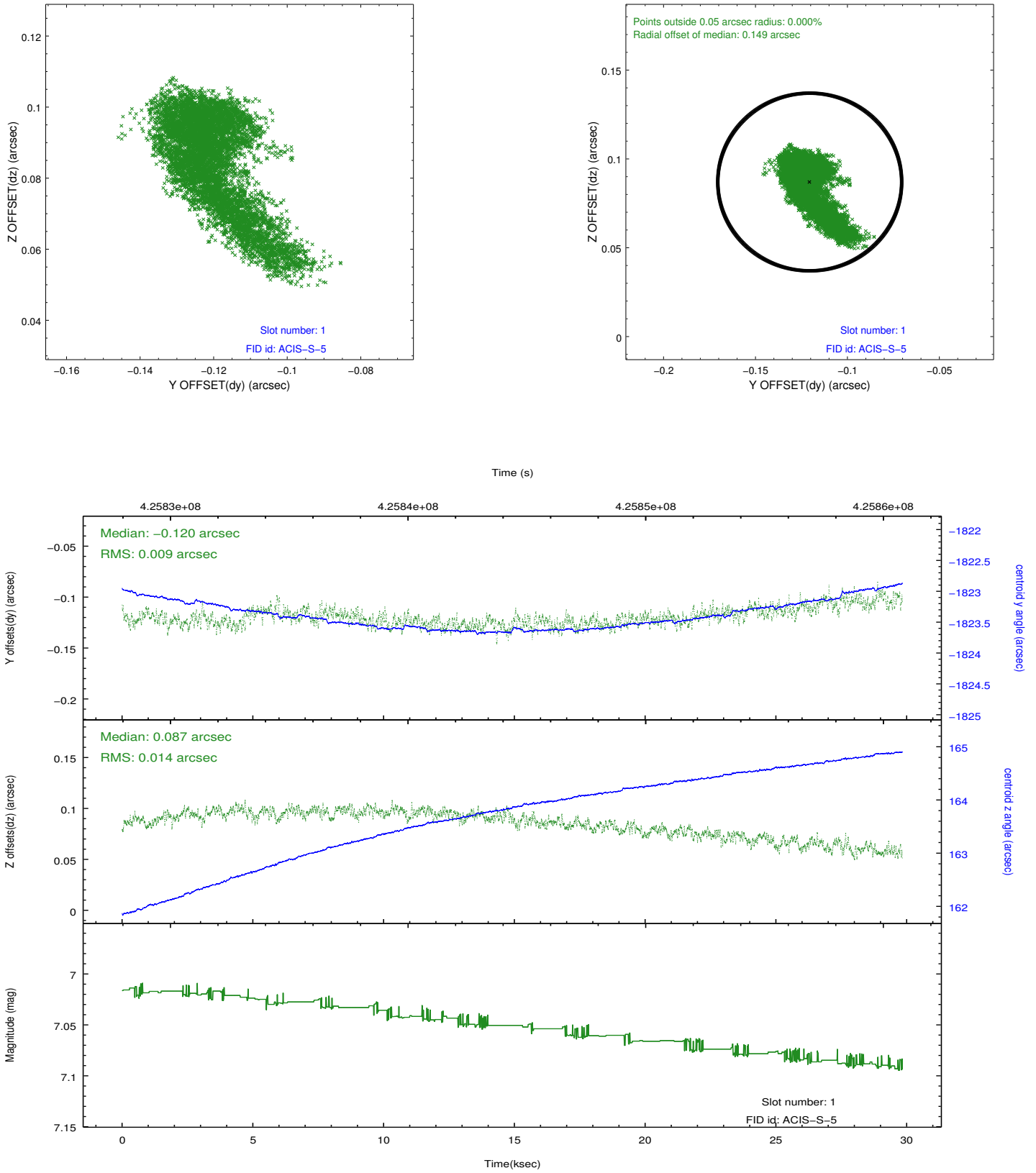


2.5 FID Slots

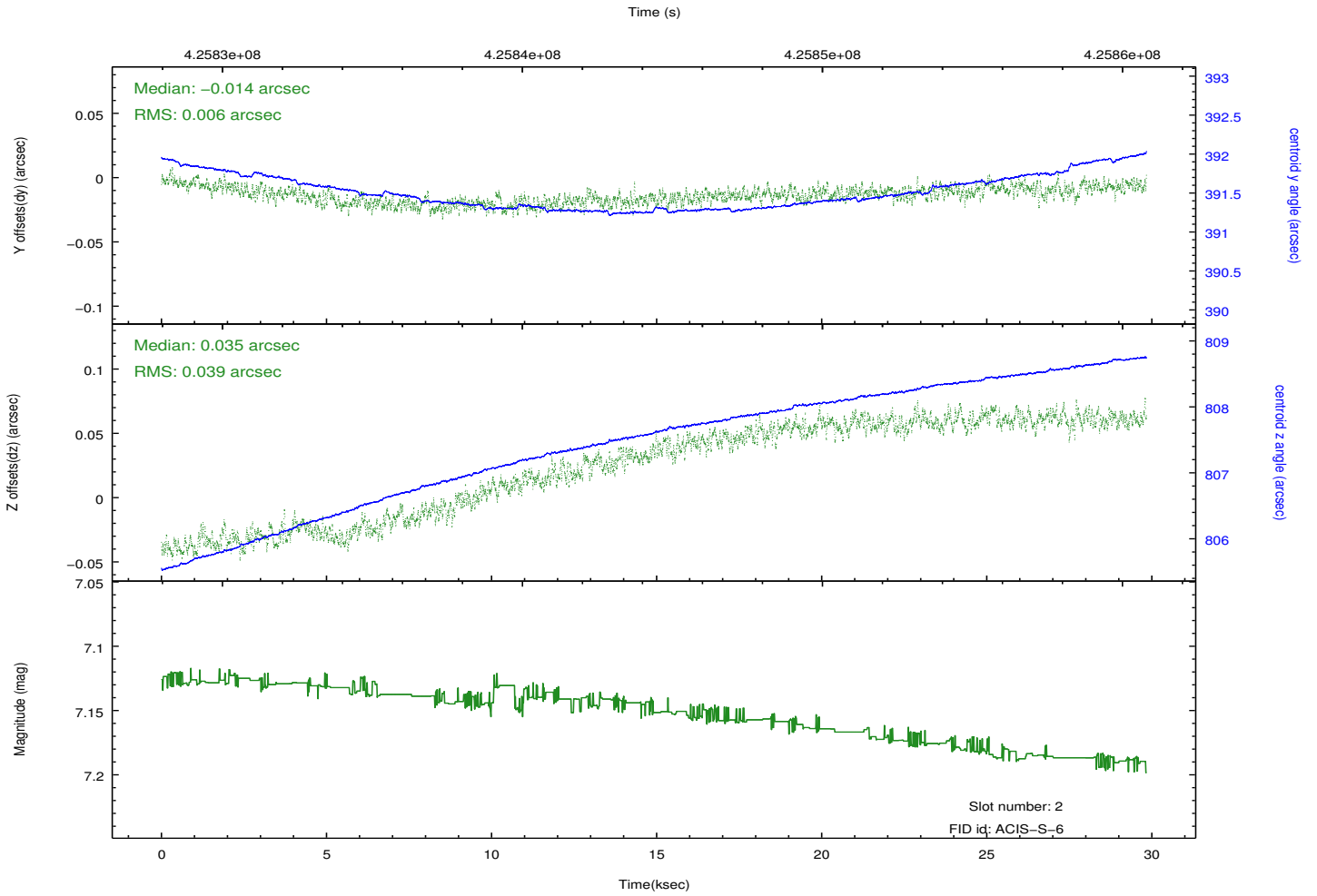
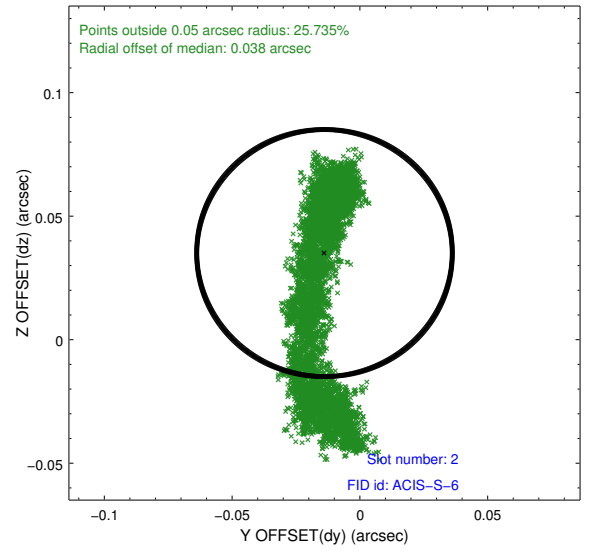
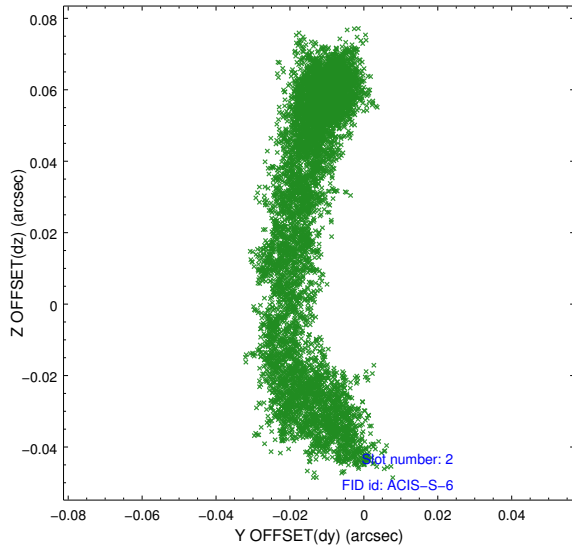
2.5.1 Slot 0



2.5.2 Slot 1



2.5.3 Slot 2



A Summary

A.1 Status

V&V Scientist	Jen Lauer
V&V Date (YYYY-MM-DD)	2012.03.20
V&V Edition	1
V&V Disposition and Status	OK
V&V Charge Time	29.743181301475

A.2 Comments