

# V&V Reference Report

## L2 ASCDS Version : 8.4.3

Observation 12542 - L2 Version 1  
Chandra X-Ray Center

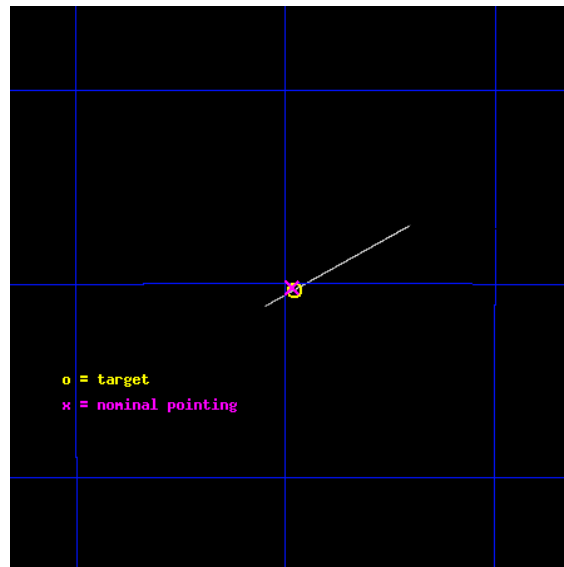
L2 Processing Date : Feb 19 2012

## Contents

<b>1</b>	<b>Front</b>	<b>2</b>
<b>2</b>	<b>OBI</b>	<b>3</b>
2.1	OBI . . . . .	3
2.1.1	Images . . . . .	3
2.1.2	Parameters . . . . .	4
2.1.3	Events . . . . .	4
2.2	Compared Parameters . . . . .	5
2.3	Aspect . . . . .	6
2.4	Star Slots . . . . .	9
2.4.1	Slot 3 . . . . .	9
2.4.2	Slot 4 . . . . .	10
2.4.3	Slot 5 . . . . .	11
2.4.4	Slot 6 . . . . .	12
2.4.5	Slot 7 . . . . .	13
2.5	FID Slots . . . . .	14
2.5.1	Slot 0 . . . . .	14
2.5.2	Slot 1 . . . . .	15
2.5.3	Slot 2 . . . . .	16
<b>A</b>	<b>Summary</b>	<b>17</b>
A.1	Status . . . . .	17
A.2	Comments . . . . .	17

# 1 Front

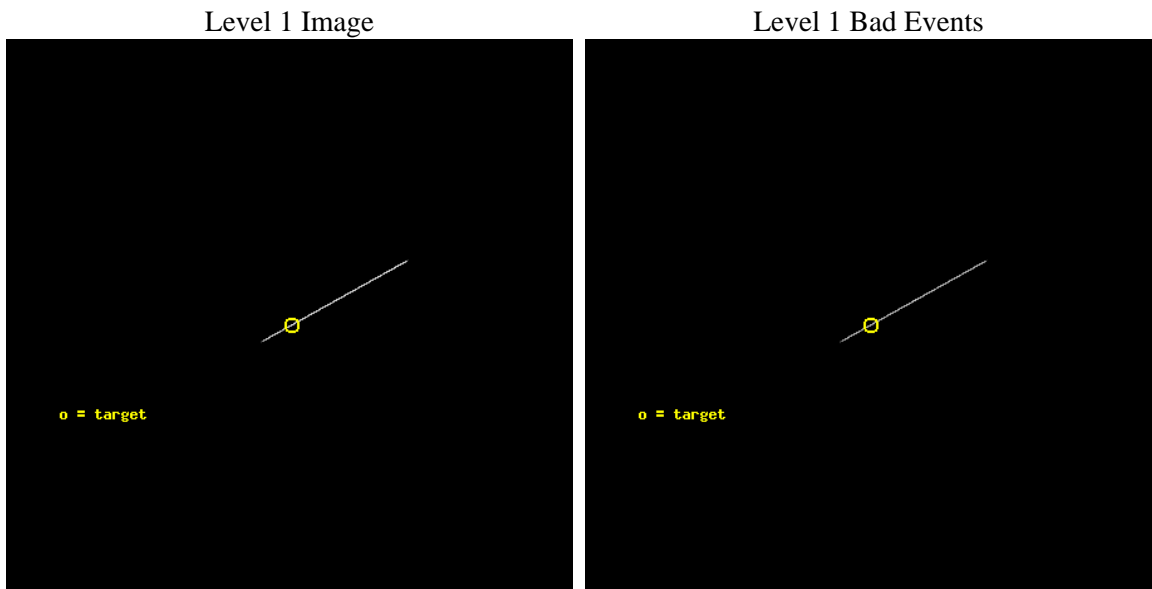
seq_num	501375	Sequence number
obs_id	12542	Observation id
title	Measuring the Spin-Down and Magnetic Field Strength of the CCO Pulsar in Puppis A	Proposal title
observer	Prof. Jules Halpern	Principal investigator
object	PSR J0821-4300	Source name
ra_targ	125.48875	Observer's specified target RA [deg]
dec_targ	-43.004889	Observer's specified target Dec [deg]
ra_nom	125.49242697345	Nominal RA [deg]
dec_nom	-43.003439446429	Nominal Dec [deg]
roll_nom	331.15914296926	Nominal Roll [deg]
revision	1	Processing version of data
ontime	21355.5	Sum of GTIs [s]
liveltime	21272.080078125	Livetime [s]
ontime7	21355.5	Sum of GTIs [s]
l2events	599986	Number of level 2 events



## 2 OBI

### 2.1 OBI

#### 2.1.1 Images



### 2.1.2 Parameters

obi_num	0	Obi number	sched_exp_time	21187.084000	[s] Scheduled observation exposure time
ascdsver	8.4.3	Processing system revision	ontime	21355.5	Sum of GTIs [s]
caldbver	4.4.8	&#160	ontime7	21355.5	Sum of GTIs [s]
date	2012-02-19T03:48:09	Date and time of file creation	l1events	798707	Number of level 1 events
revision	1	Processing version of data			

### 2.1.3 Events

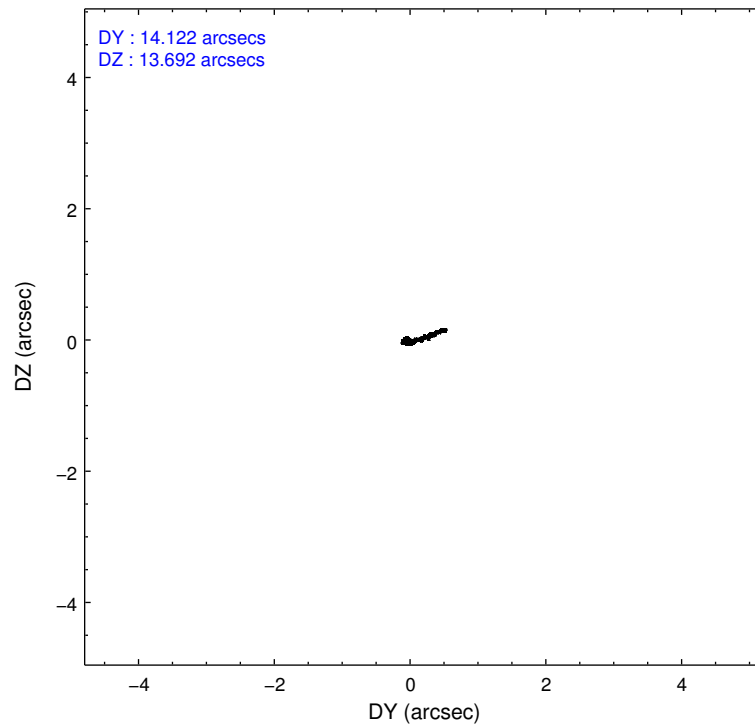
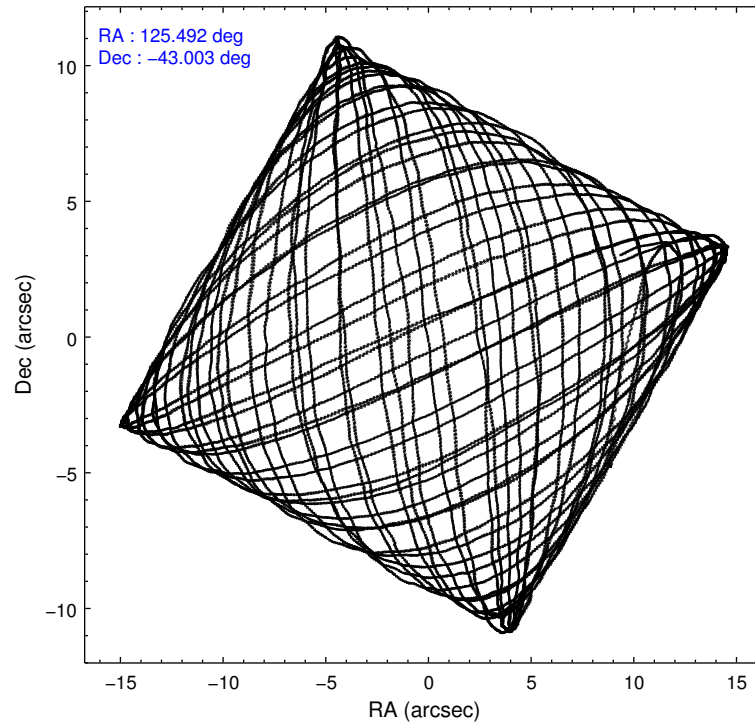
	<b>ccd 7</b>
level 1 events	798707
rejected events	187410
rejected %	23%

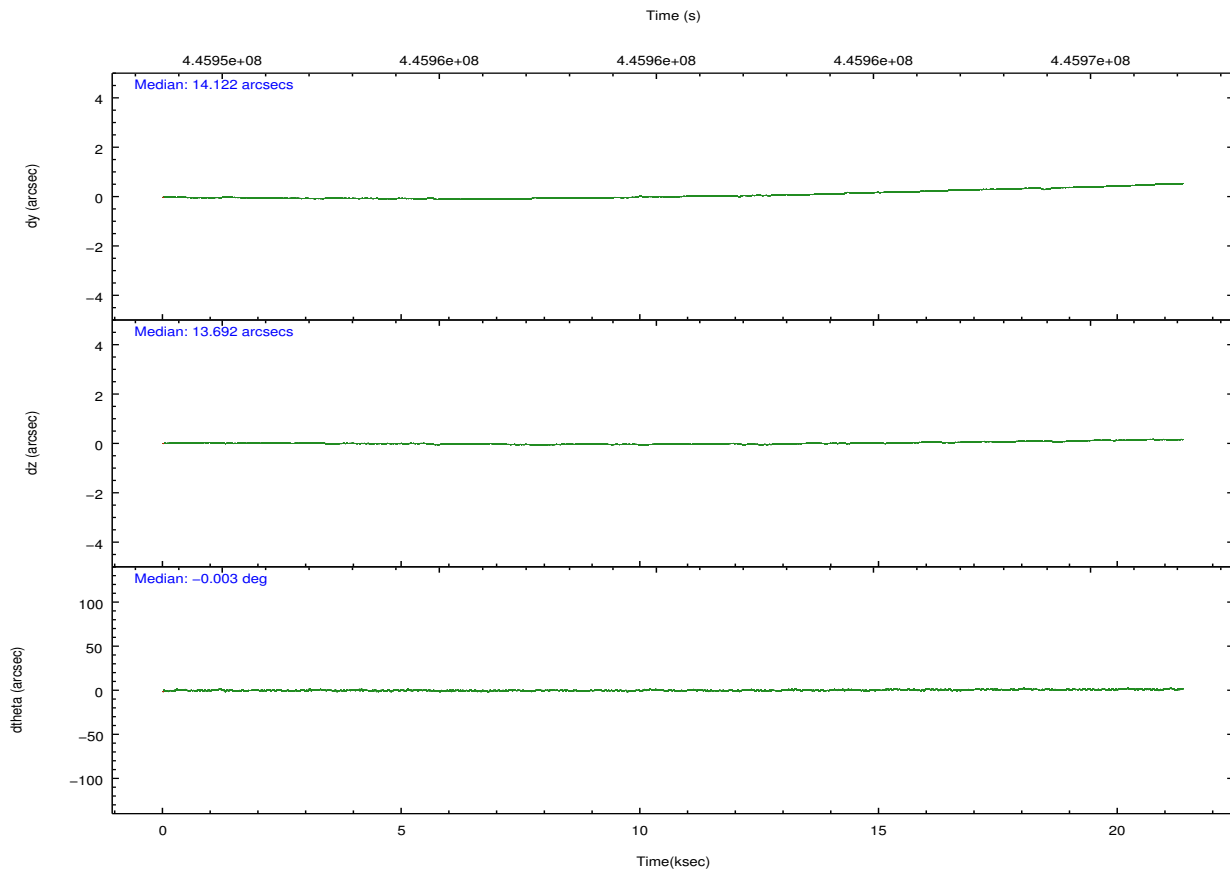
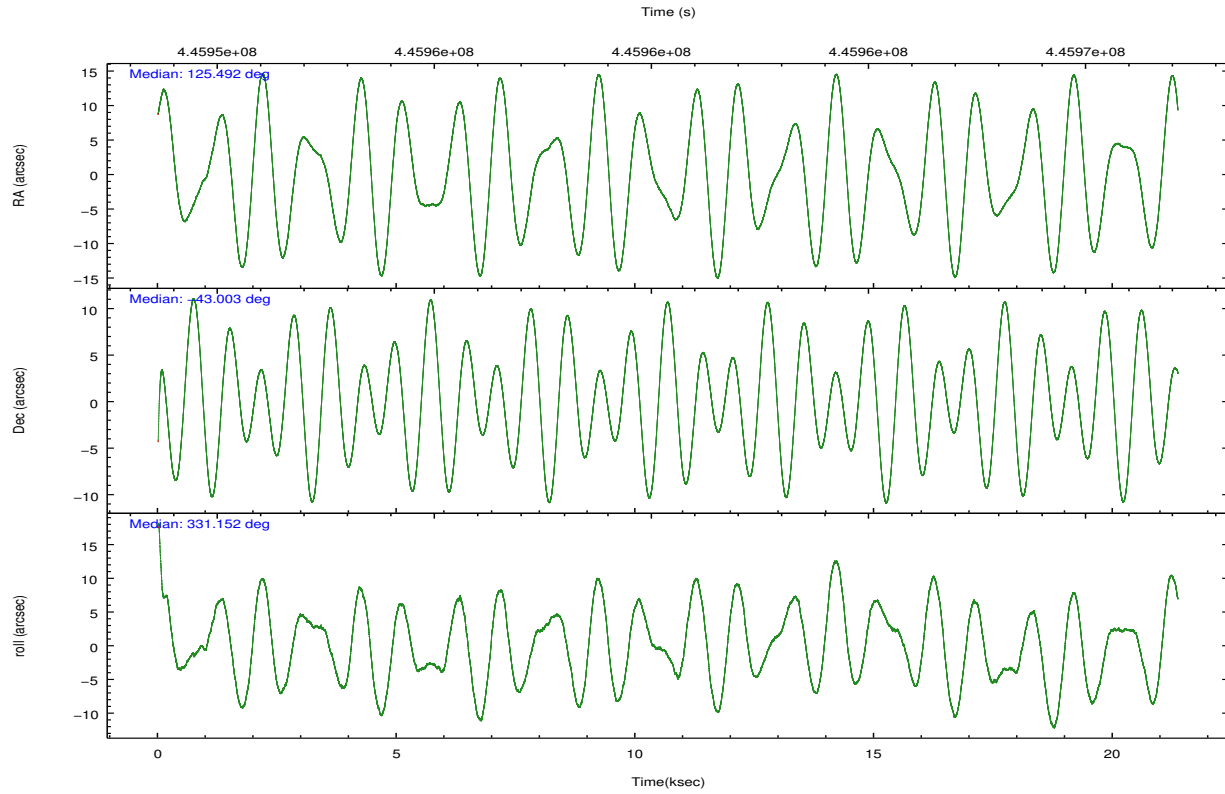
	<b>ccd 7</b>
grade 0 events	166155
	20%
grade 1 events	231
	0%
grade 2 events	196560
	24%
grade 3 events	59290
	7%
grade 4 events	58521
	7%
grade 5 events	16709
	2%
grade 6 events	132540
	16%
grade 7 events	168701
	21%

## 2.2 Compared Parameters

Parameter	Planned	Actual	Parameter	Planned	Actual
Instrument	ACIS	ACIS	Obspar format version number	7	7
Detector	ACIS-7	ACIS-7	Obspar file type	PREDICTED	ACTUAL
Grating	NONE	NONE	Obspar update status	NONE	UPDATED
Data mode	CC33_GRADED	CC33_GRADED	Number of optional ACIS chips dropped	0	0
Observation mode	POINTING	POINTING	On-chip summing requested	N	N
[deg] Pointing RA	125.455018	125.4924269734531	Subarray requested	NONE	NONE
[deg] Pointing Dec	-43.004351	-43.00343944642908	Alternating exposures requested	N	N
[deg] Pointing Roll	330.976998	331.159142969257	[s] Primary exposure time	0.000000	0
[s] Window start time (MET)	444441666.184000	444441666.184000			
[s] Window stop time (MET)	446947206.184000	446947206.184000			
[mm] SIM focus pos	-0.684267	-0.6828225247311905			
[mm] SIM defocus	0	0.001444936568705701			
[mm] SIM translation stage pos	-190.132523	-190.1400660498719			
[mm] SIM translation stage offset	0	0.00754346686406393			
[s] Observation start time (MET)	445949885.184000	445948757.26722			
Observation start date	2012-02-18T10:56:59	2012-02-18T10:39:17			
[s] Observation end time (MET)	445971072.184000	445971299.06842			
Observation end date	2012-02-18T16:50:06	2012-02-18T16:54:59			
Read mode	CONTINUOUS	CONTINUOUS			

## 2.3 Aspect





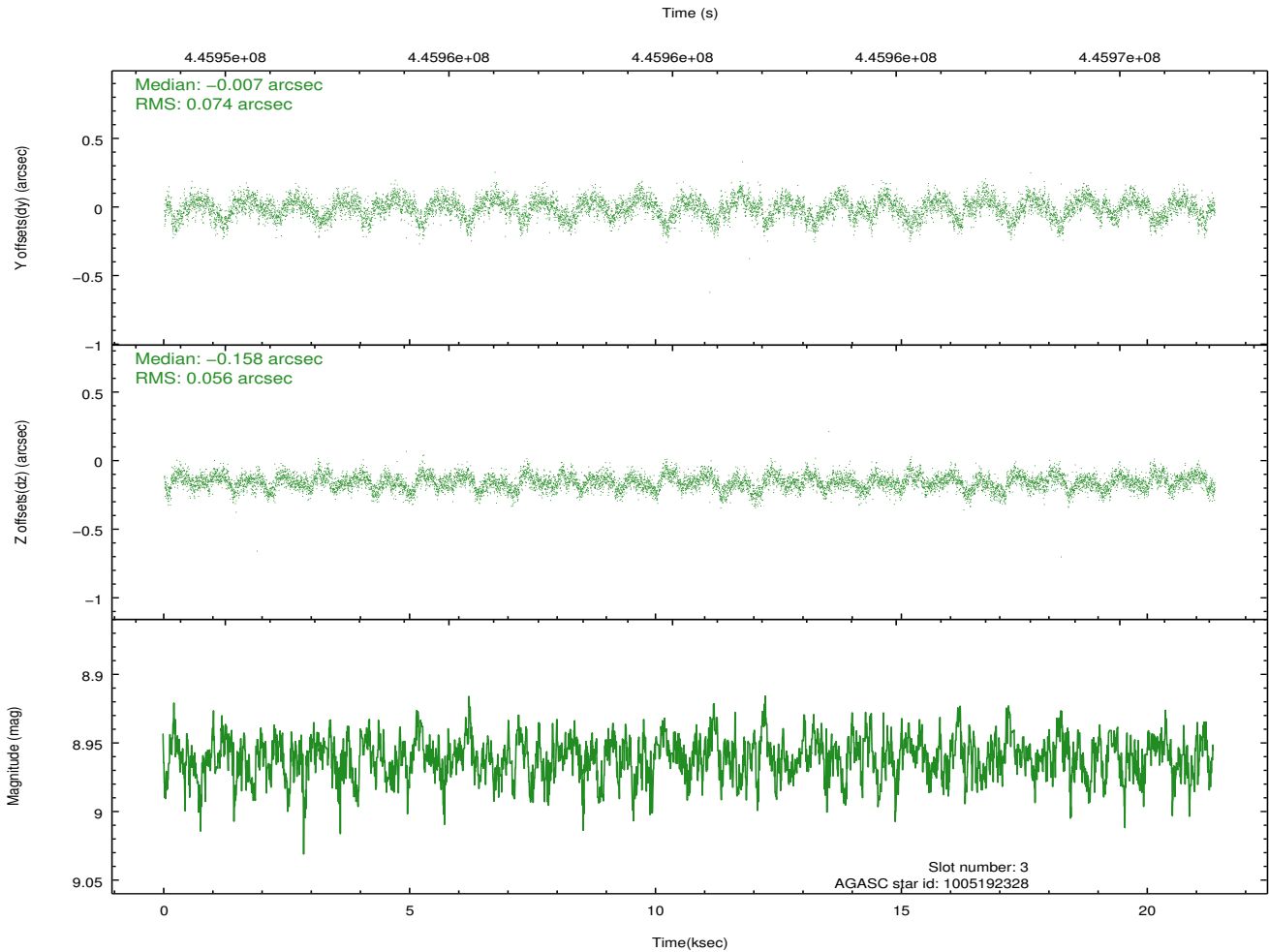
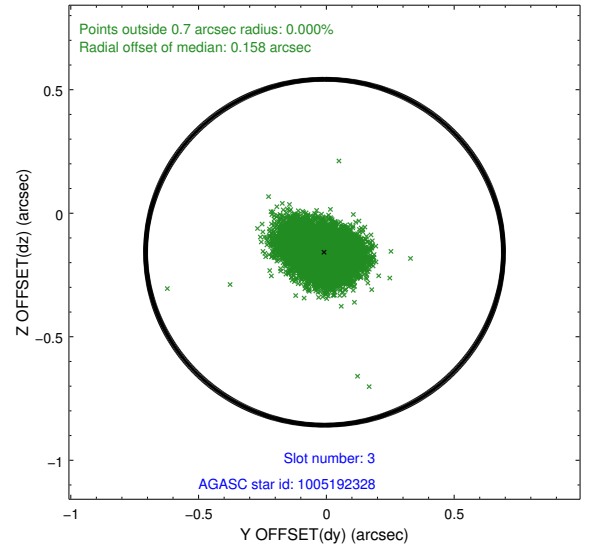
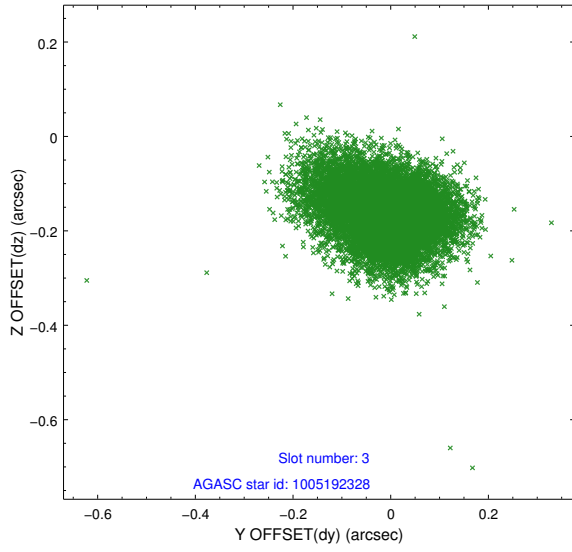
### Slot Statistics

slot	status	id	mag	n_pts	med_dy	med_dz	dr1	dr2	ra	dec	mean_y	mean_z
0	FID	ACIS-S-2	6.97	5211	0.006	-0.067	0.009	0.015	0.000000	0.000000	-767.18	-1735.10
1	FID	ACIS-S-5	7.10	5210	-0.134	0.020	0.008	0.014	0.000000	0.000000	-1820.47	166.81
2	FID	ACIS-S-6	7.19	5211	0.104	0.054	0.009	0.016	0.000000	0.000000	394.40	810.89
3	GUIDE	1005192328	8.96	10414	-0.007	-0.158	0.098	0.161	126.494374	-42.919317	2255.77	1582.51
4	GUIDE	1005719480	8.86	10414	-0.152	0.151	0.128	0.187	125.476619	-43.605627	1100.04	-1864.94
5	GUIDE	1005724040	7.60	10421	0.201	0.118	0.097	0.163	125.738175	-43.227880	1040.98	-344.25
6	GUIDE	1005726872	7.39	10421	-0.061	0.085	0.084	0.147	125.535449	-43.662820	1333.70	-1970.84
7	GUIDE	1005210304	9.84	10371	0.003	-0.183	0.273	0.448	125.364534	-42.215893	-1588.13	2364.49

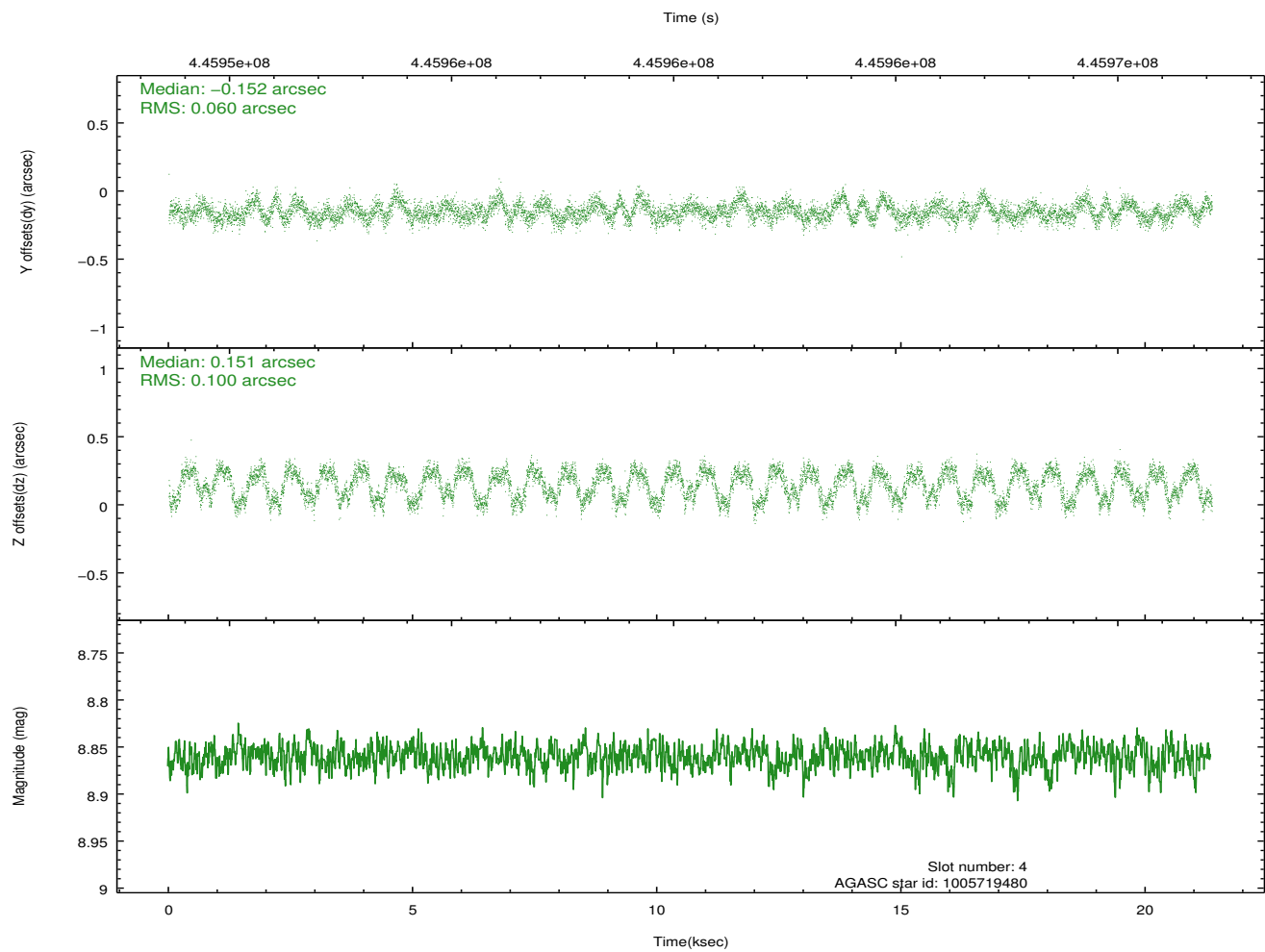
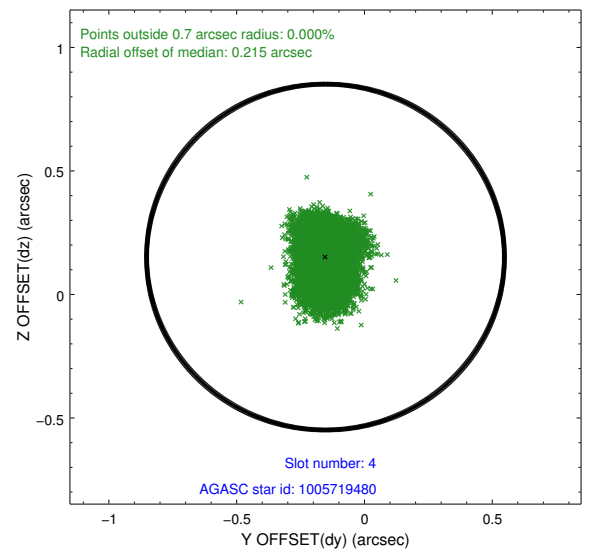
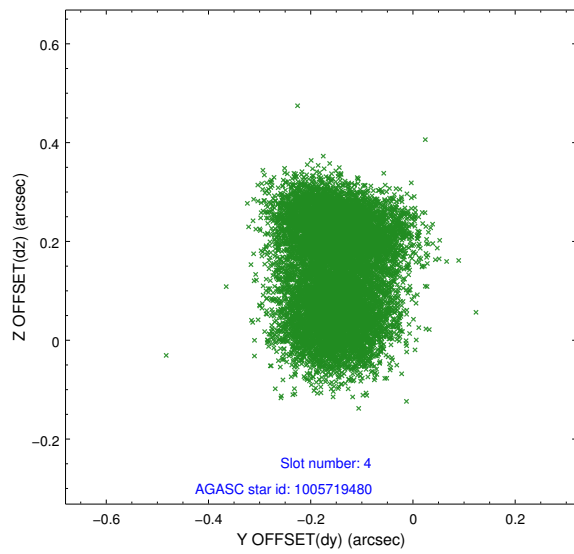
∞

## 2.4 Star Slots

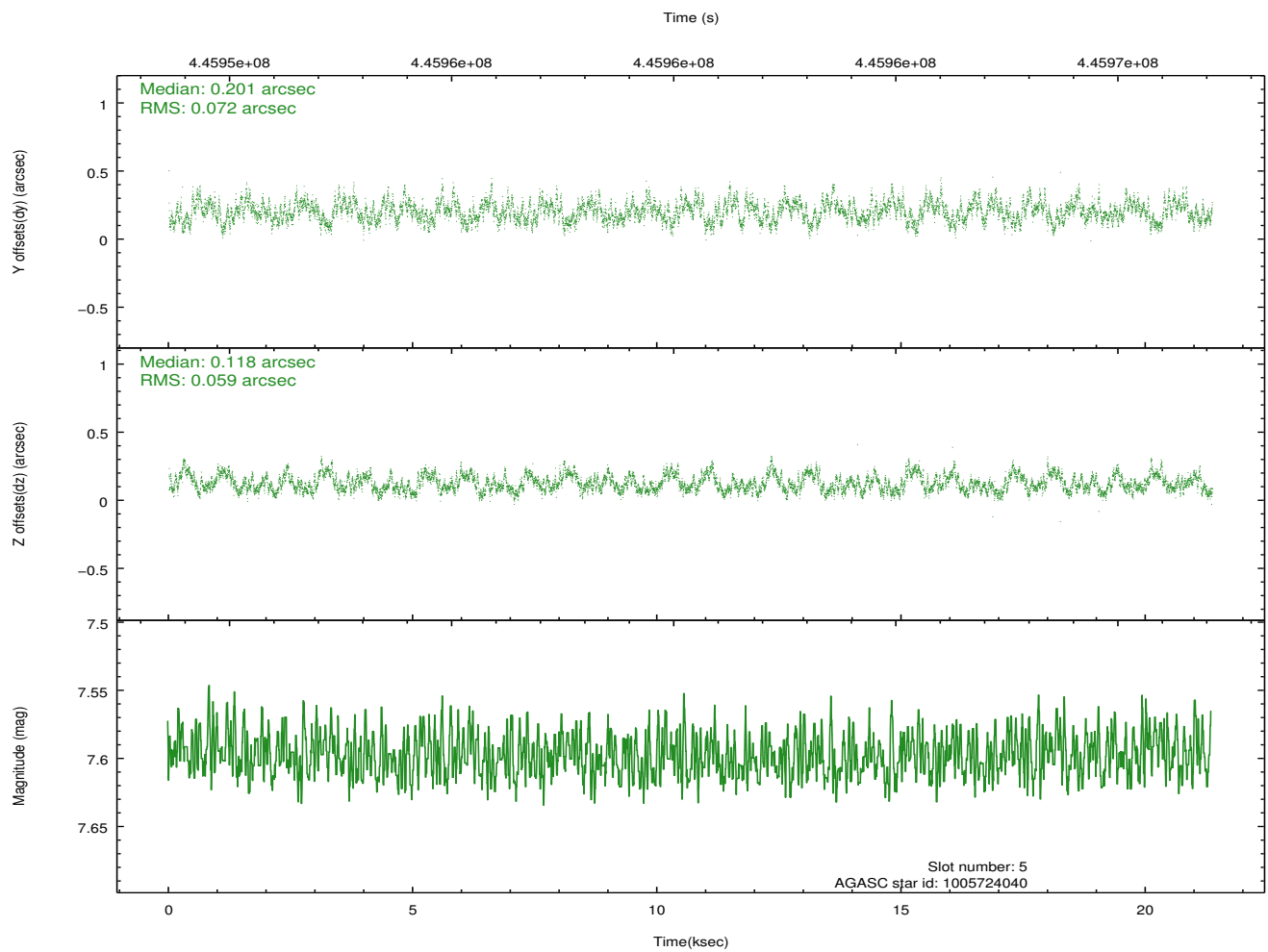
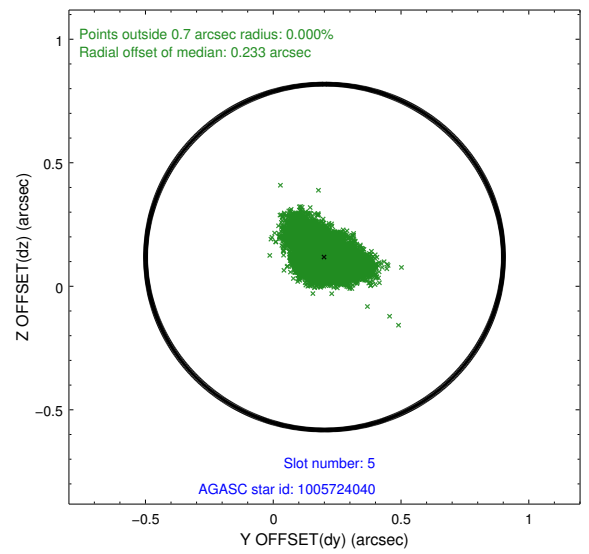
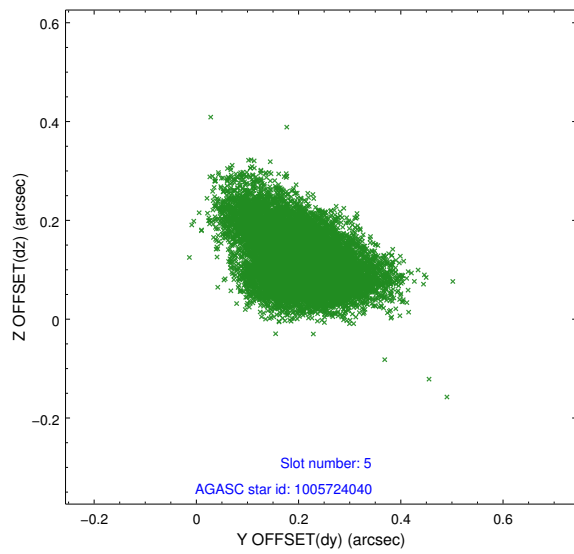
### 2.4.1 Slot 3



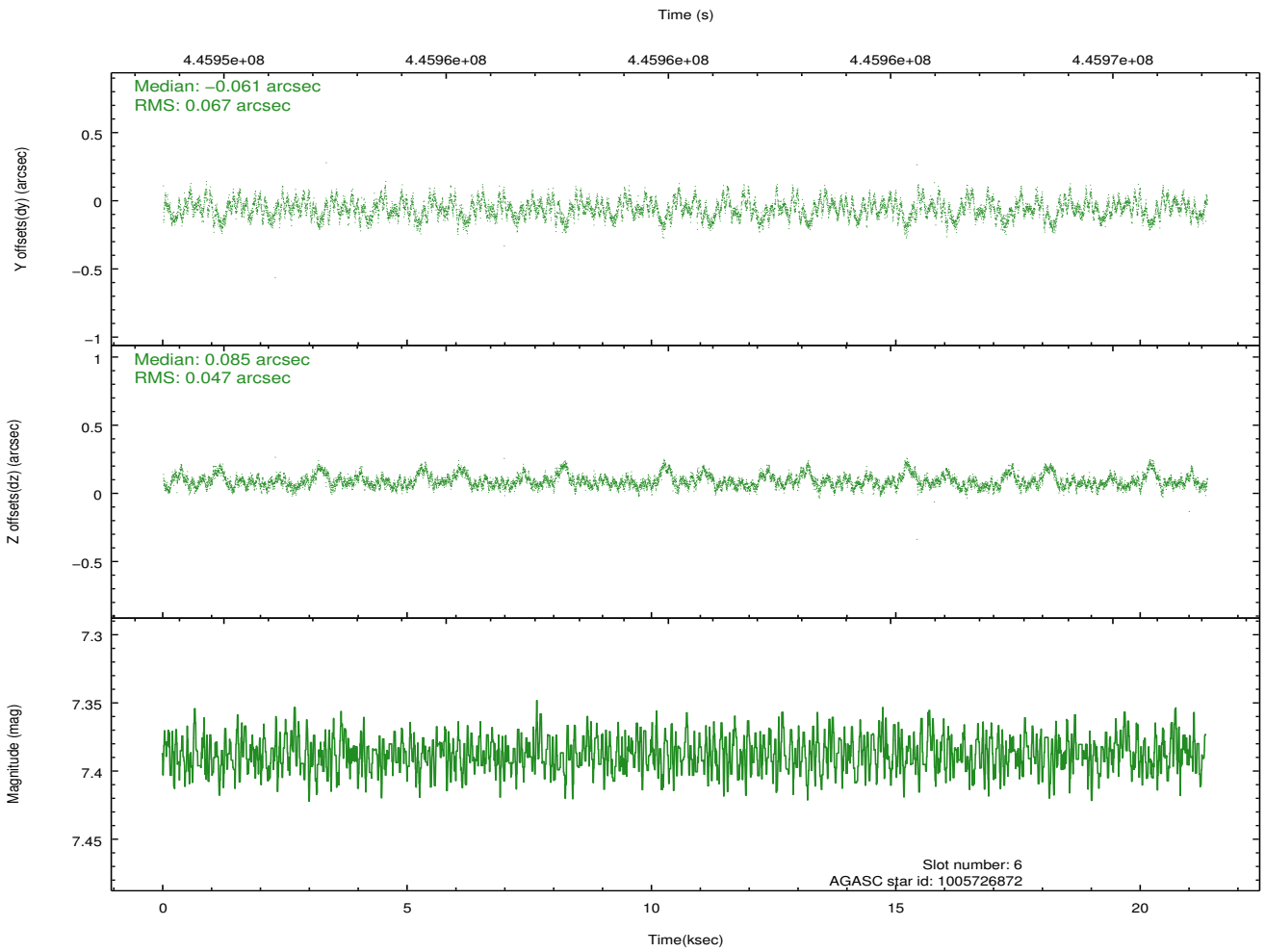
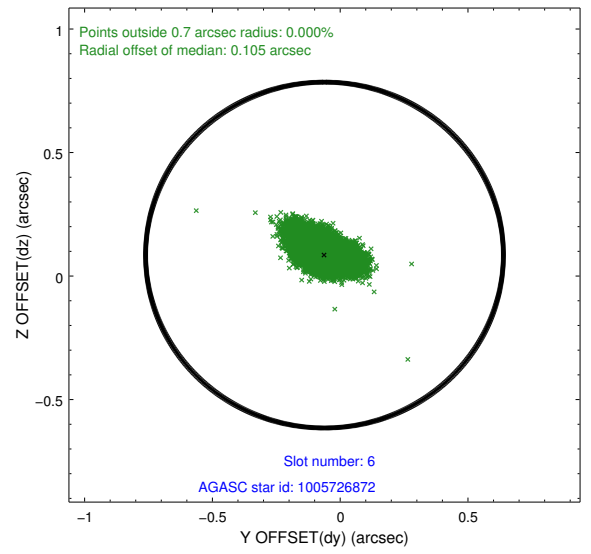
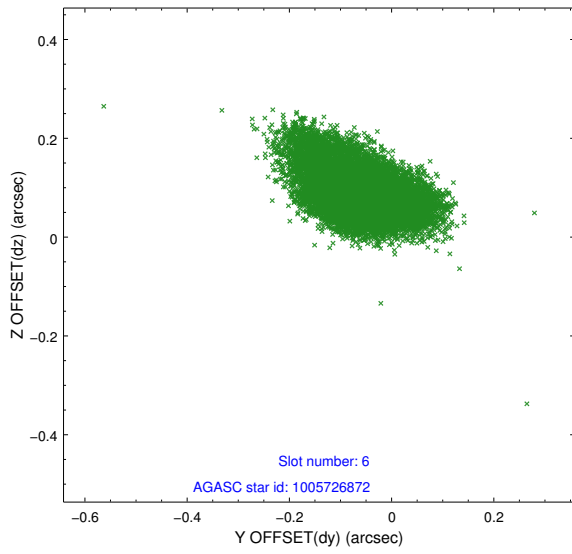
## 2.4.2 Slot 4



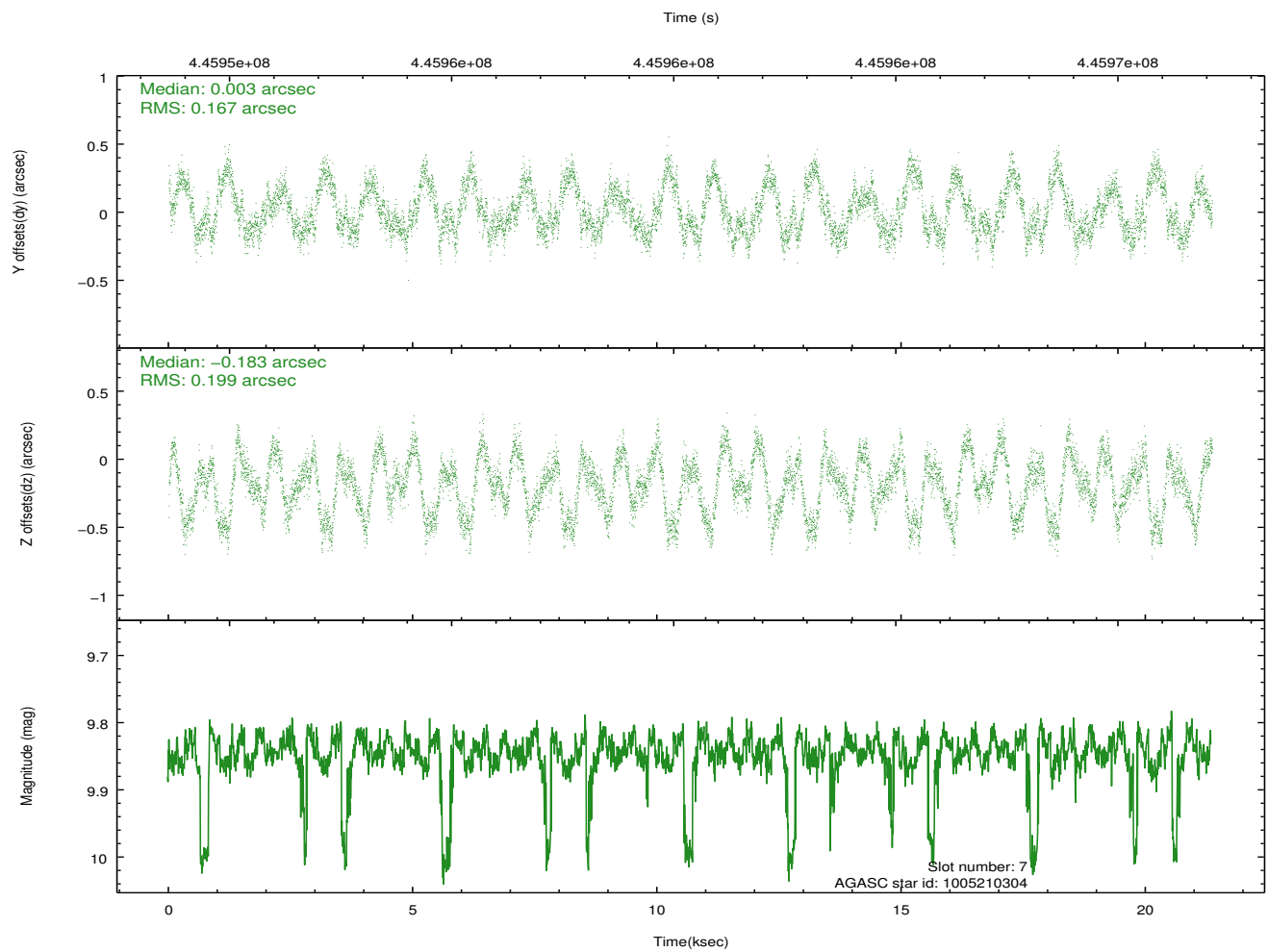
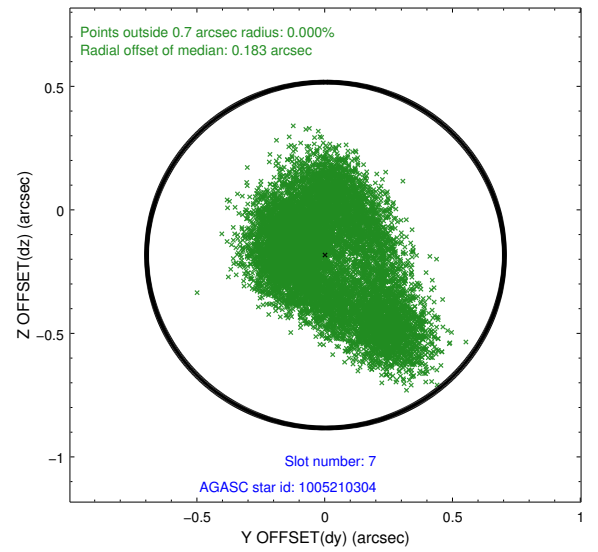
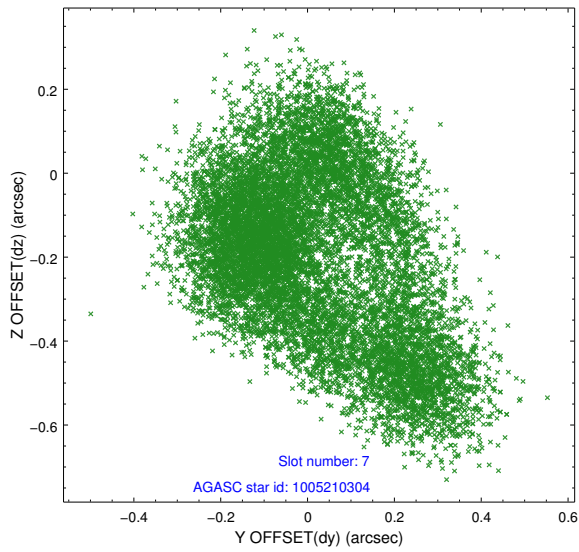
### 2.4.3 Slot 5



### 2.4.4 Slot 6

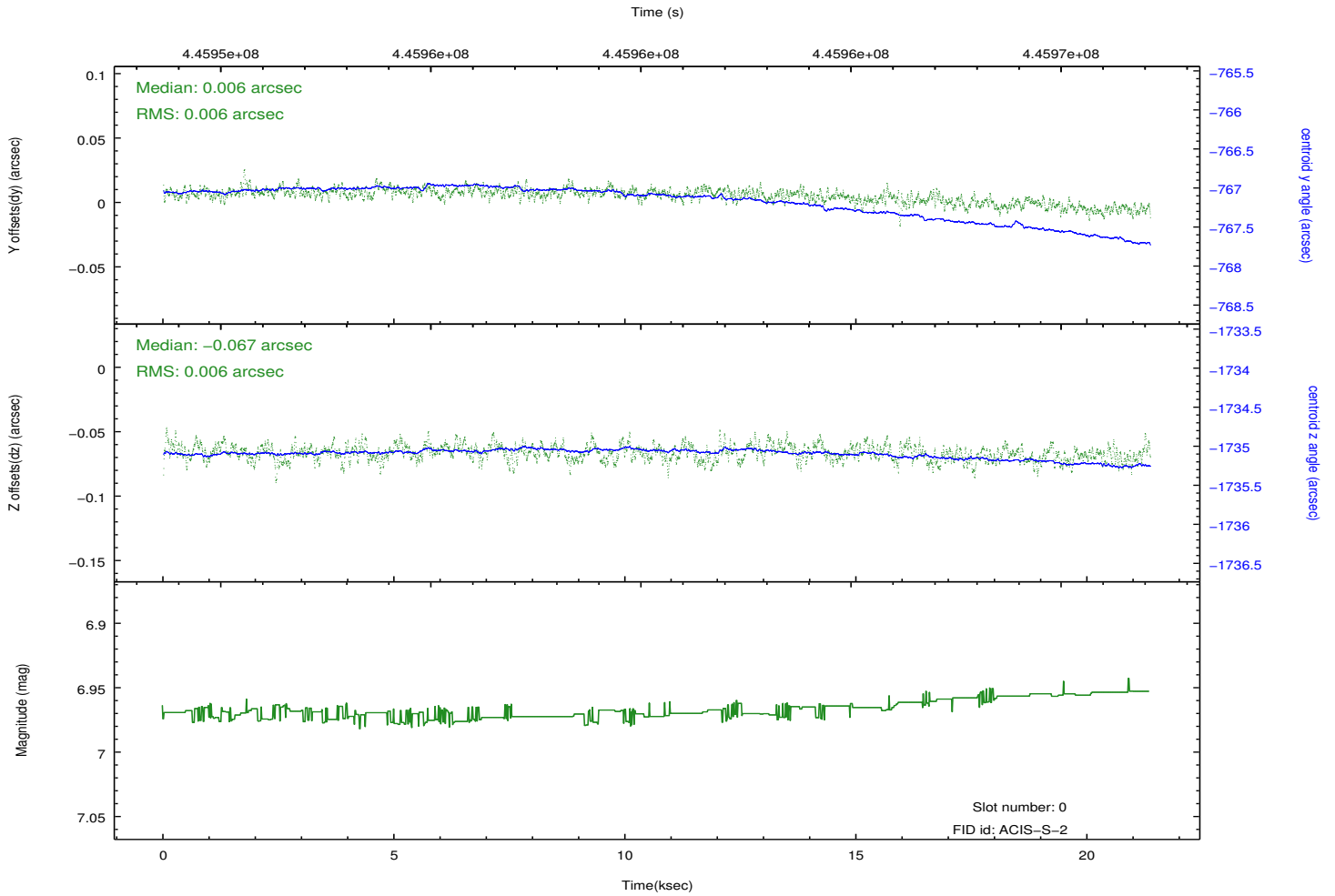
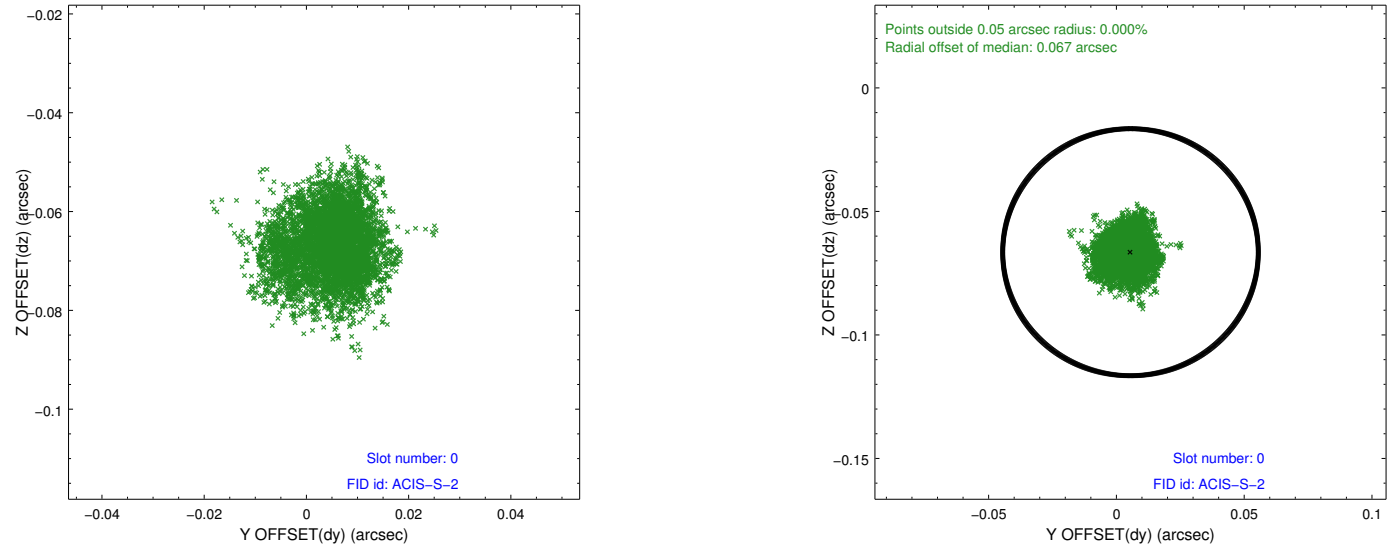


## 2.4.5 Slot 7

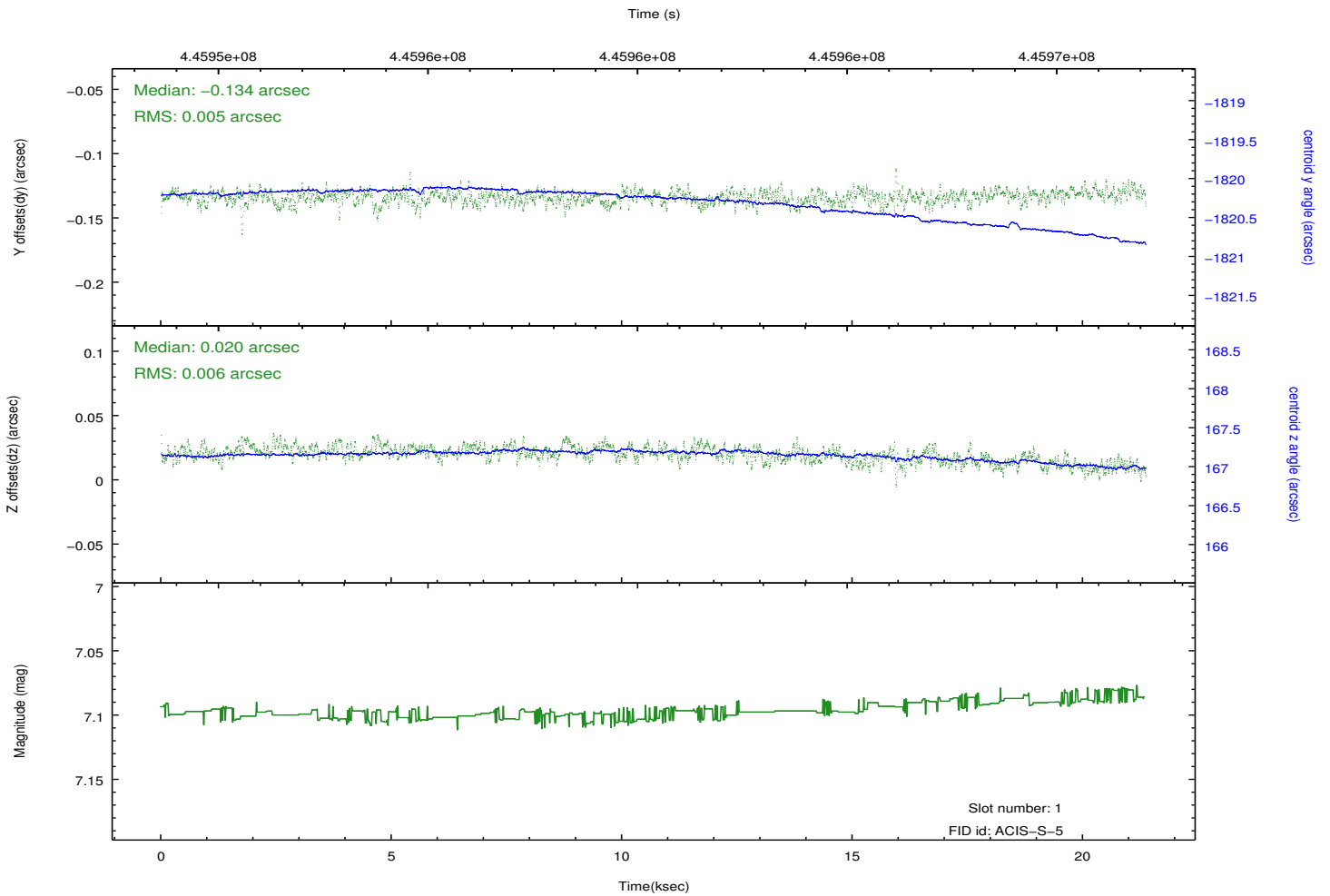
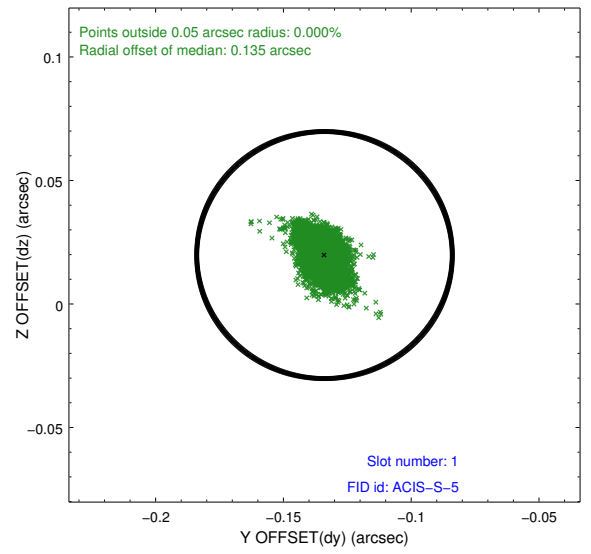
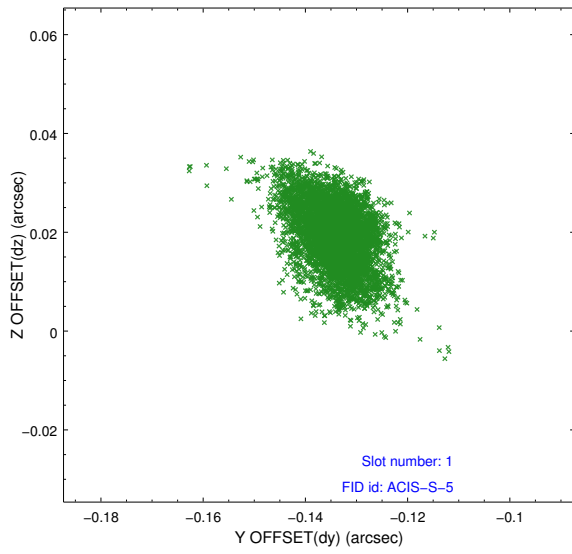


## 2.5 FID Slots

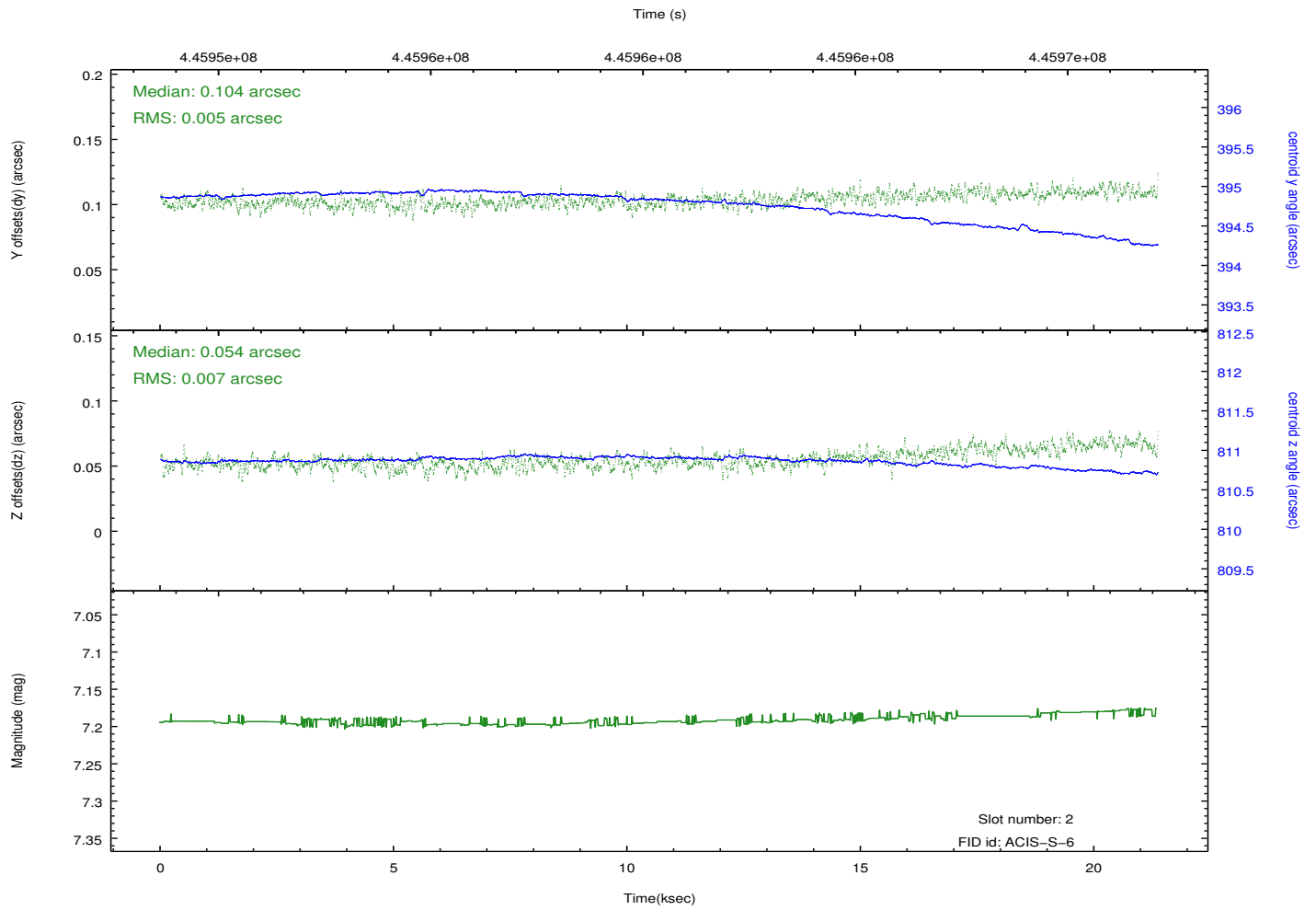
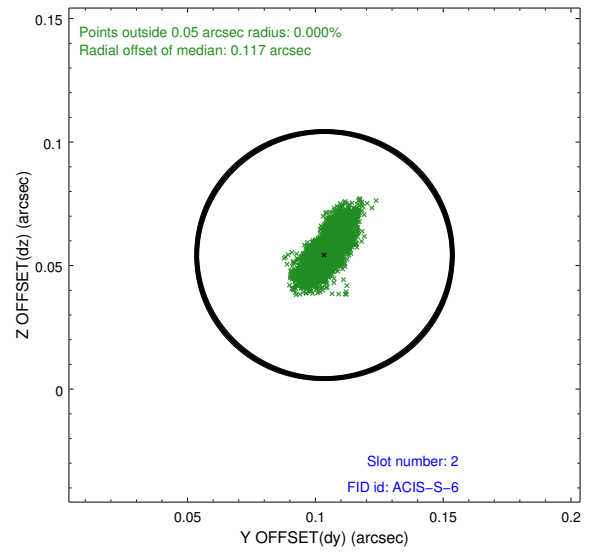
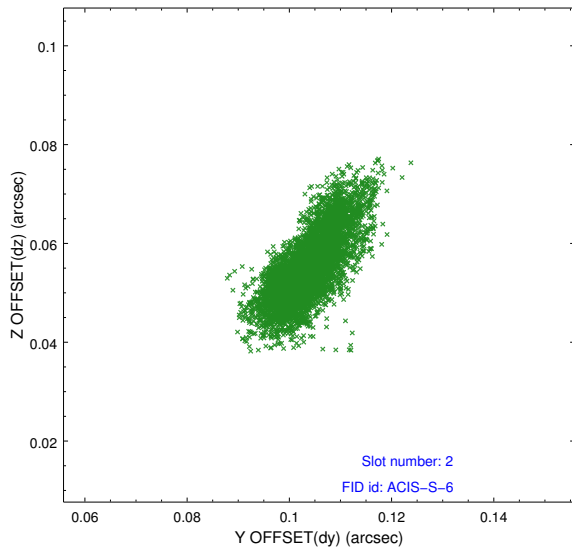
### 2.5.1 Slot 0



## 2.5.2 Slot 1



### 2.5.3 Slot 2



# A Summary

## A.1 Status

V&V Scientist	Joy Nichols
V&V Date (YYYY-MM-DD)	2012.02.21
V&V Edition	1
V&V Disposition and Status	OK
V&V Charge Time	21.3555

## A.2 Comments

Joint proposal with XMM.