

V&V Reference Report

L2 ASCDS Version : 8.4.3

Observation 13432 - L2 Version 2
Chandra X-Ray Center

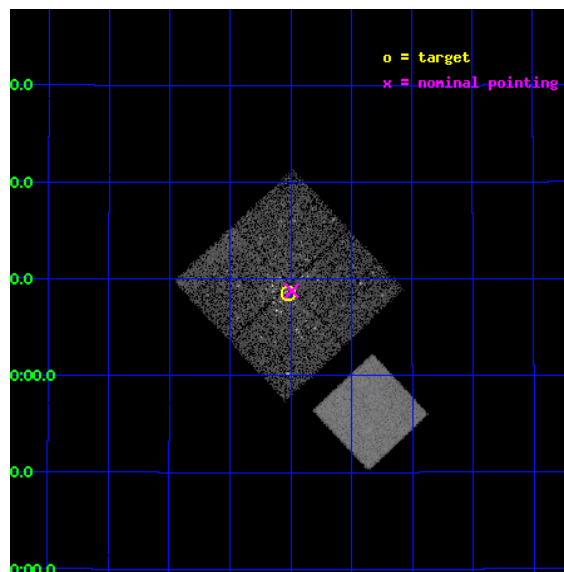
L2 Processing Date : Feb 26 2012

Contents

1	Front	2
2	OBI	3
2.1	OBI	3
2.1.1	Images	3
2.1.2	Bias	3
2.1.3	Parameters	4
2.1.4	Events	4
2.2	Compared Parameters	5
2.3	Aspect	6
2.4	Star Slots	9
2.4.1	Slot 3	9
2.4.2	Slot 4	10
2.4.3	Slot 5	11
2.4.4	Slot 6	12
2.4.5	Slot 7	13
2.5	FID Slots	14
2.5.1	Slot 0	14
2.5.2	Slot 1	15
2.5.3	Slot 2	16
A	Summary	17
A.1	Status	17
A.2	Comments	17

1 Front

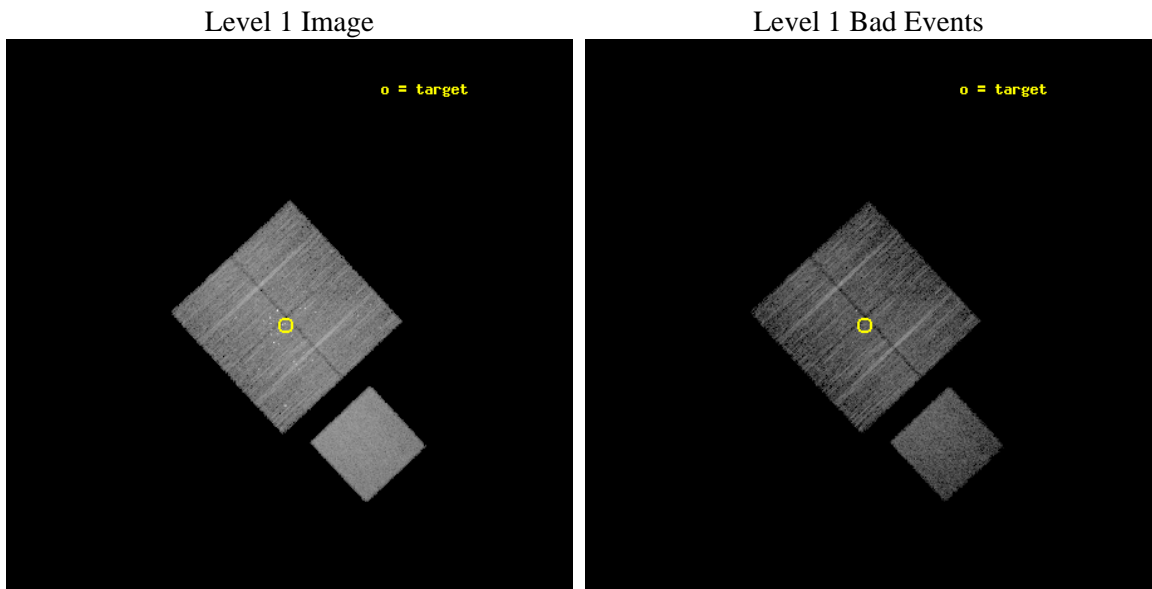
seq_num	200754	Sequence number
obs_id	13432	Observation id
title	Connecting Young Stellar Object Variability Across the Great Observatories: A Combined Spitzer and Chandra Study	Proposal title
observer	Dr. Kevin Flaherty	Principal investigator
object	IC 348	Source name
dtycycle	0	
cycle	P	events from which exps? Prim/Second/Both
ra_targ	56.13125	Observer's specified target RA [deg]
dec_targ	32.142694	Observer's specified target Dec [deg]
ra_nom	56.122582990588	Nominal RA [deg]
dec_nom	32.146180616166	Nominal Dec [deg]
roll_nom	136.97048754749	Nominal Roll [deg]
revision	2	Processing version of data
ontime	10044.000077248	Sum of GTIs [s]
livetime	9912.7678219531	Livetime [s]
ontime0	10044.000077248	Sum of GTIs [s]
ontime1	10044.000077248	Sum of GTIs [s]
ontime2	10040.85908699	Sum of GTIs [s]
ontime3	10044.000077248	Sum of GTIs [s]
ontime7	10044.000077248	Sum of GTIs [s]
l2events	65532	Number of level 2 events



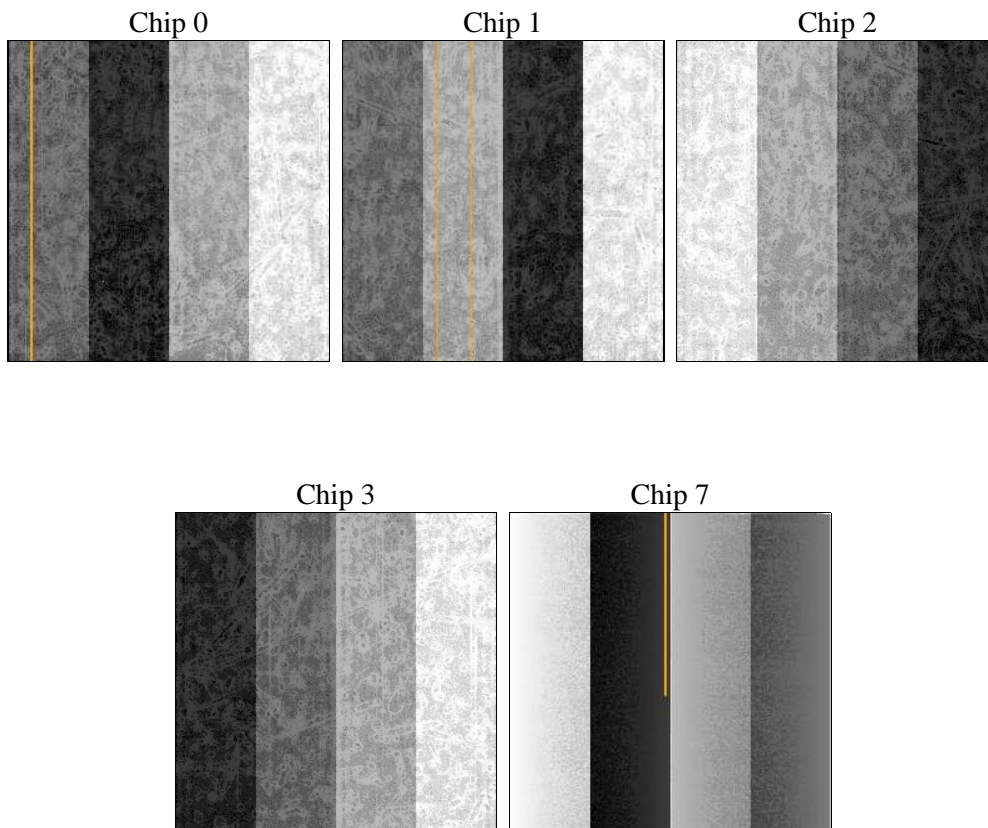
2 OBI

2.1 OBI

2.1.1 Images



2.1.2 Bias



2.1.3 Parameters

obi_num	0	Obi number	sched_exp_time	10000.000000	[s] Scheduled observation exposure time
ascdsver	8.4.3	Processing system revision	ontime	10044.000077248	Sum of GTIs [s]
caldbver	4.4.8	 	ontime0	10044.000077248	Sum of GTIs [s]
date	2012-02-26T04:41:16	Date and time of file creation	ontime1	10044.000077248	Sum of GTIs [s]
revision	2	Processing version of data	ontime2	10040.85908699	Sum of GTIs [s]
			ontime3	10044.000077248	Sum of GTIs [s]
			ontime7	10044.000077248	Sum of GTIs [s]
			l1events	323197	Number of level 1 events

2.1.4 Events

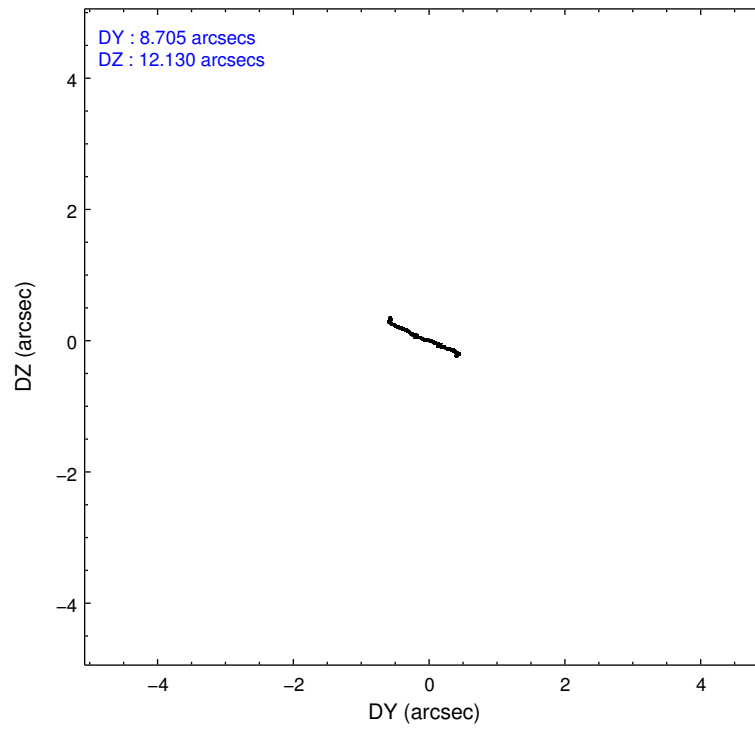
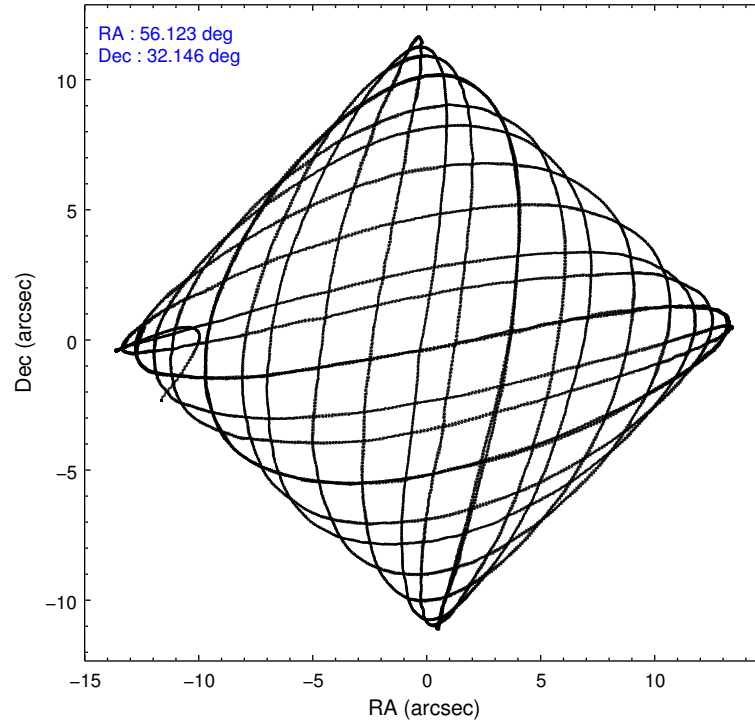
	ccd 0	ccd 1	ccd 2	ccd 3	ccd 7
level 1 events	56369	61305	60988	64939	79596
rejected events	48409	50595	53008	55070	44689
rejected %	85%	82%	86%	84%	56%

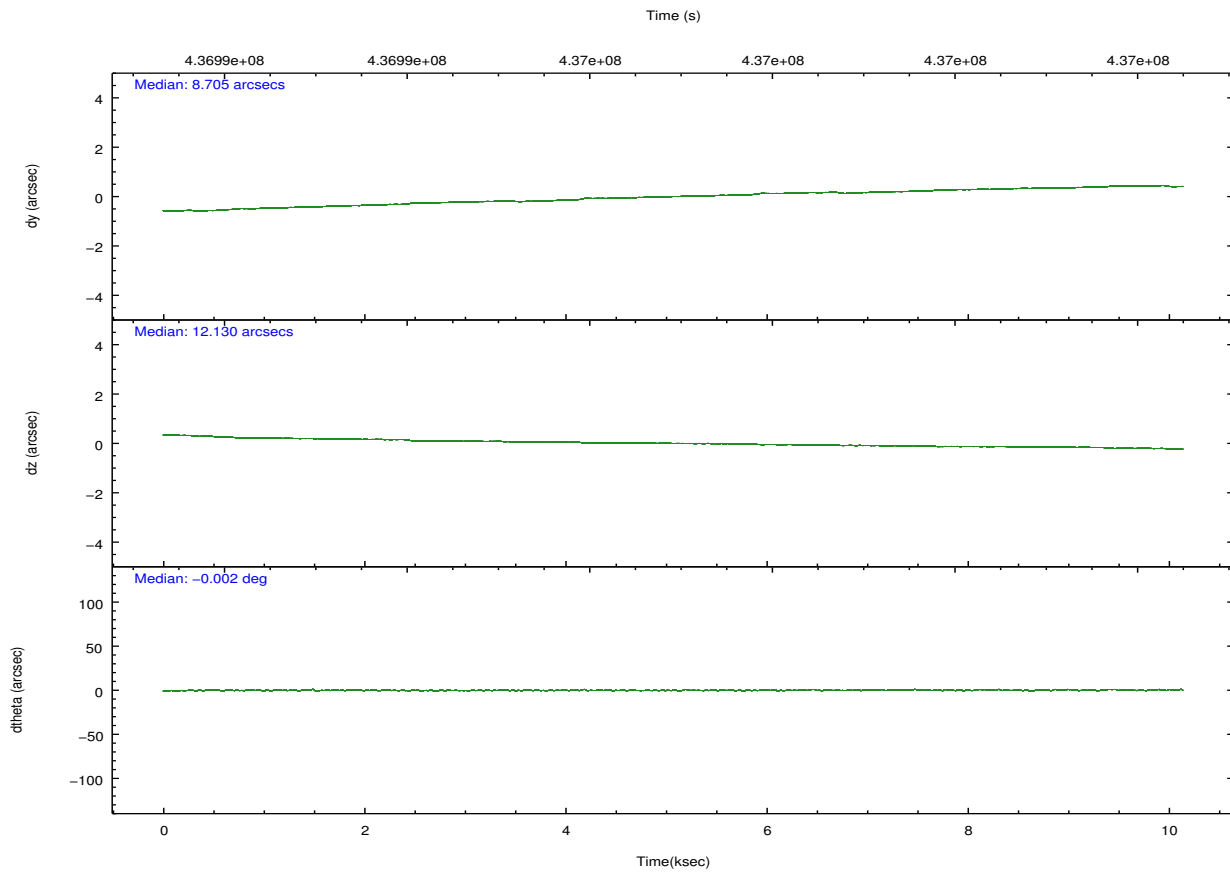
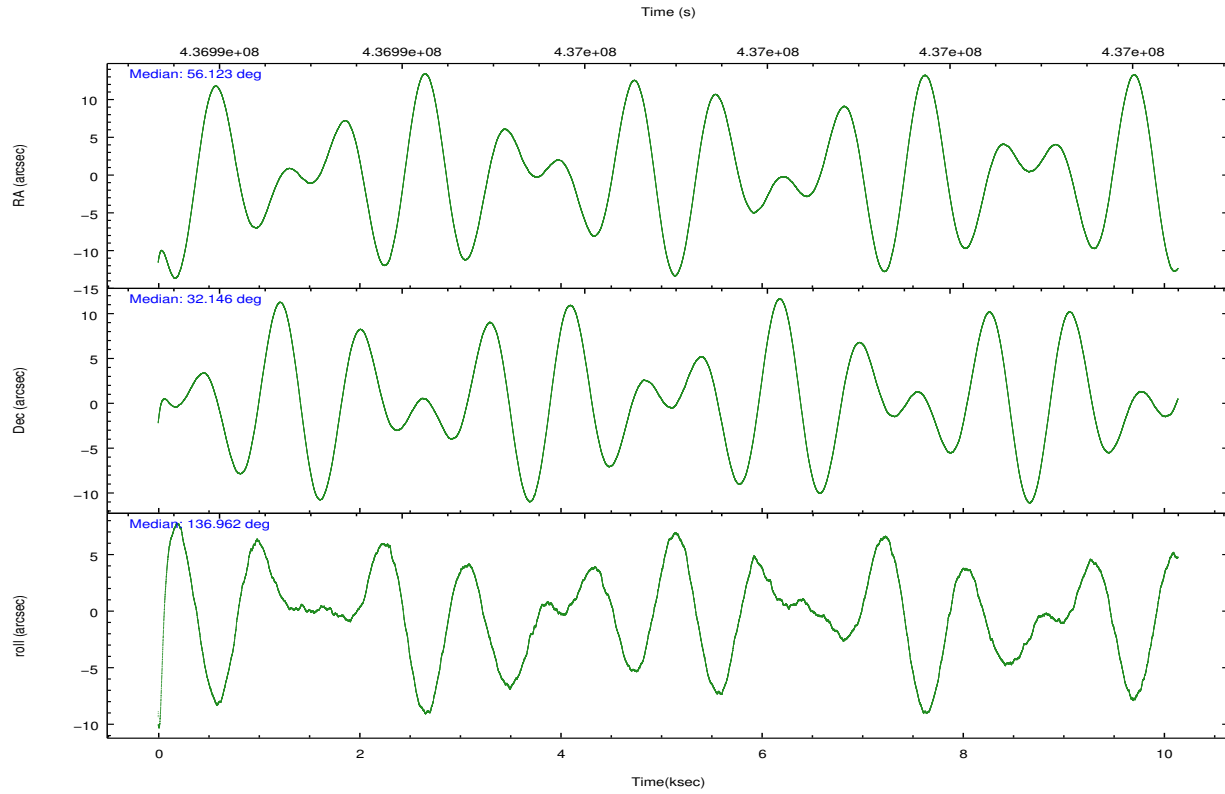
	ccd 0	ccd 1	ccd 2	ccd 3	ccd 7
grade 0 events	3185	4890	3391	4978	2960
	5%	7%	5%	7%	3%
grade 1 events	35	109	47	90	97
	0%	0%	0%	0%	0%
grade 2 events	1827	2255	1804	1914	7229
	3%	3%	2%	2%	9%
grade 3 events	738	892	660	831	3102
	1%	1%	1%	1%	3%
grade 4 events	754	920	777	740	2995
	1%	1%	1%	1%	3%
grade 5 events	2697	2945	2537	3166	8378
	4%	4%	4%	4%	10%
grade 6 events	1460	1759	1351	1407	18628
	2%	2%	2%	2%	23%
grade 7 events	45673	47535	50421	51813	36207
	81%	77%	82%	79%	45%

2.2 Compared Parameters

Parameter	Planned	Actual	Parameter	Planned	Actual
Instrument	ACIS	ACIS	Obspar format version number	7	7
Detector	ACIS-01237	ACIS-01237	Obspar file type	PREDICTED	ACTUAL
Grating	NONE	NONE	Obspar update status	NONE	UPDATED
Data mode	VFAINT	VFAINT	CCD I0 on	Y	Y
Observation mode	POINTING	POINTING	CCD I1 on	Y	Y
[deg] Pointing RA	56.154314	56.12258299058789	CCD I2 on	Y	Y
[deg] Pointing Dec	32.140109	32.14618061616592	CCD I3 on	Y	Y
[deg] Pointing Roll	136.744931	136.9704875474905	CCD S0 on	N	N
[mm] SIM focus pos	-0.782348	-0.7809083437167272	CCD S1 on	N	N
[mm] SIM defocus	0	0.001439871863259334	CCD S2 on	N	N
[mm] SIM translation stage pos	-233.592463	-233.5874344608287	CCD S3 on	O1	Y
[mm] SIM translation stage offset	0	-0.005018542100998502	CCD S4 on	N	N
[s] Observation start time (MET)	436991975.184000	436990993.76915	CCD S5 on	N	N
Observation start date	2011-11-06T18:38:29	2011-11-06T18:23:13	Number of optional ACIS chips dropped	0	0
[s] Observation end time (MET)	437001975.184000	437003052.38228	On-chip summing requested	N	N
Observation end date	2011-11-06T21:25:09	2011-11-06T21:44:12	Subarray requested	NONE	NONE
Read mode	TIMED	TIMED	Alternating exposures requested	N	N
			[s] Primary exposure time	0.000000	3.1

2.3 Aspect



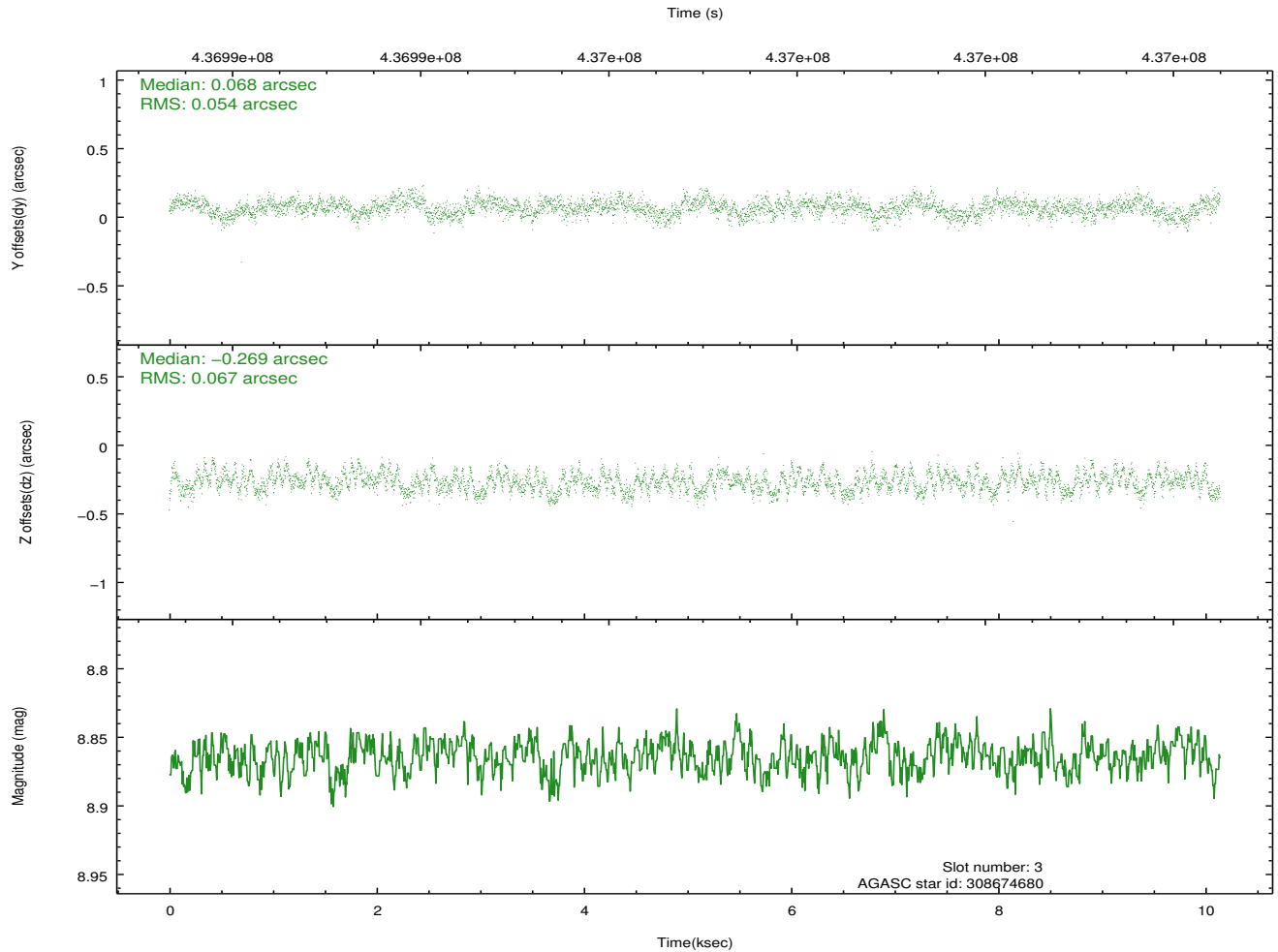
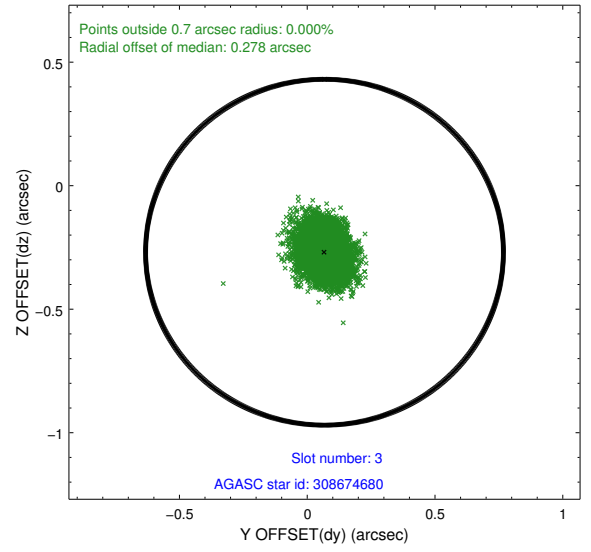
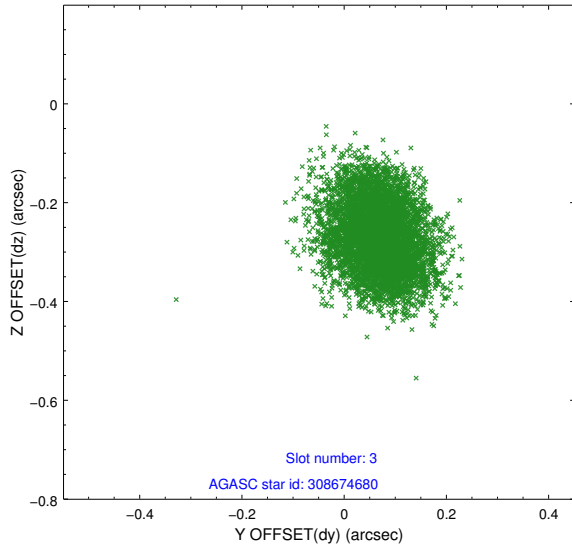


Slot Statistics

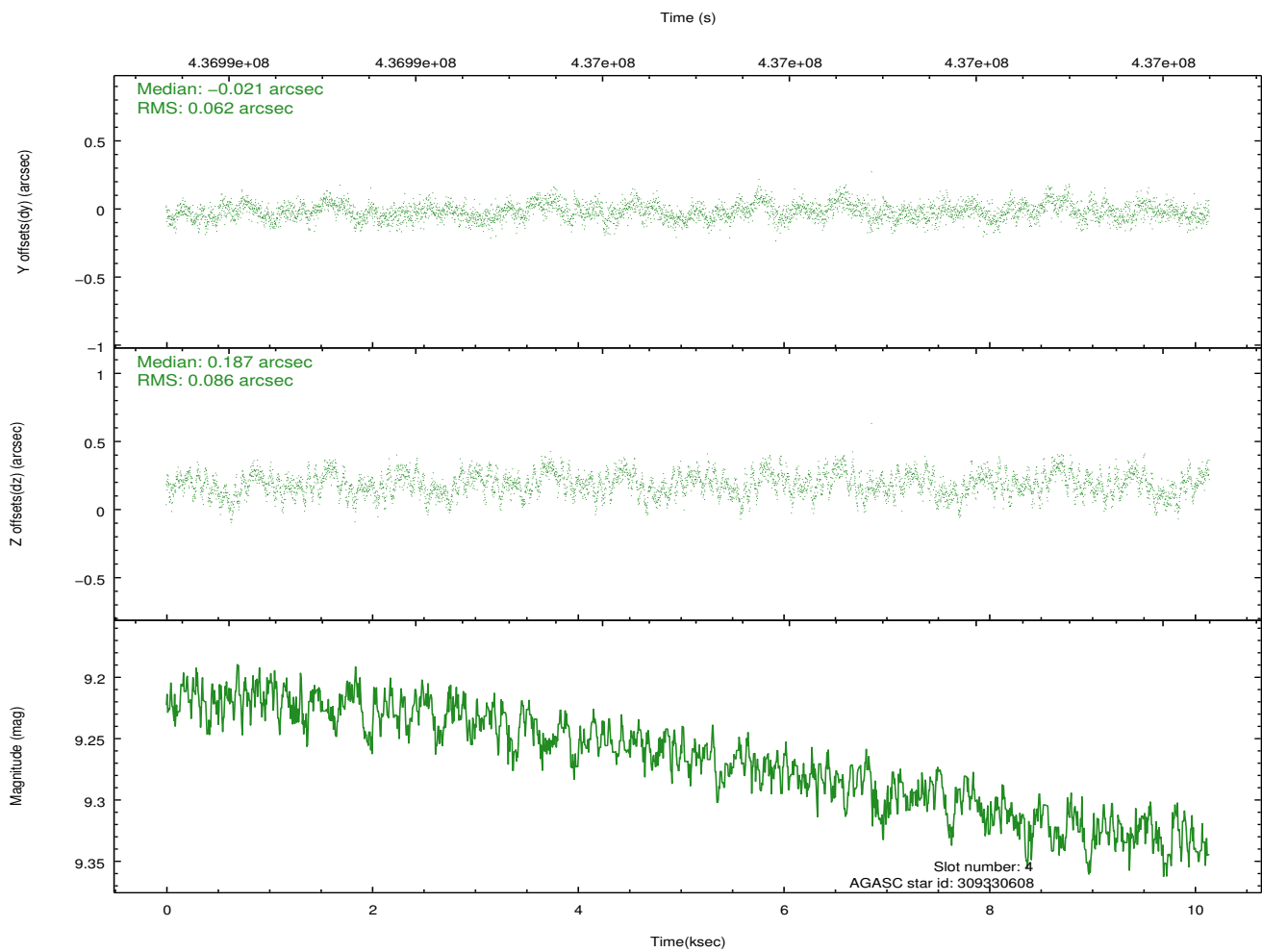
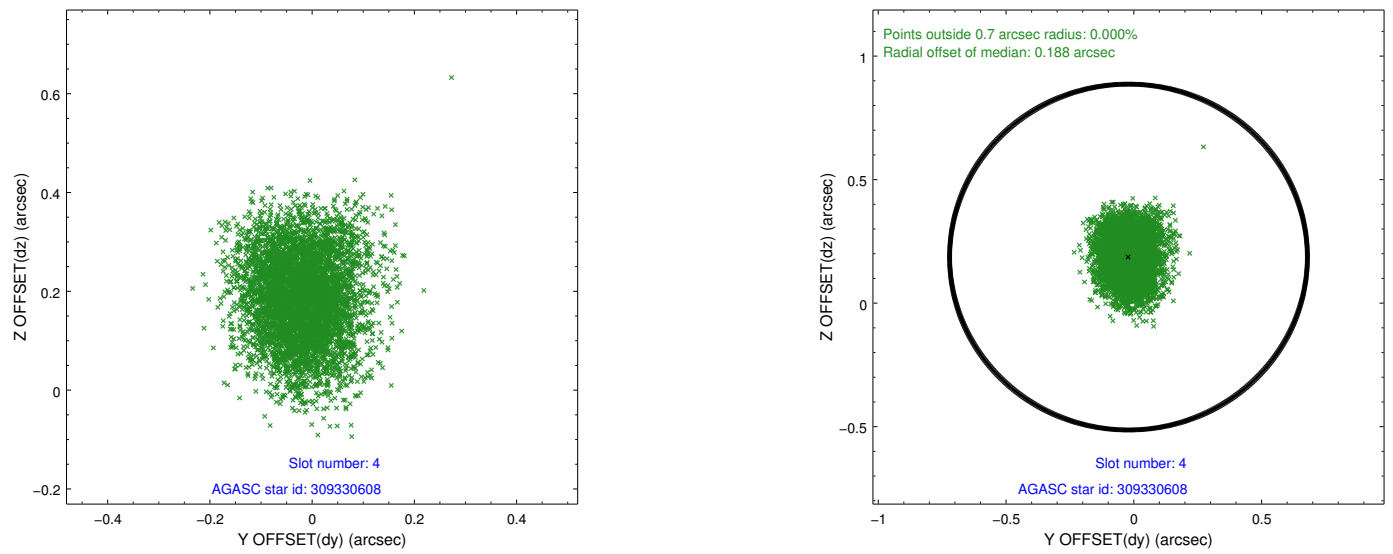
slot	status	id	mag	n_pts	med_dy	med_dz	dr1	dr2	ra	dec	mean_y	mean_z
0	FID	ACIS-I-1	7.05	2474	0.103	-0.070	0.007	0.014	0.000000	0.000000	931.05	-835.75
1	FID	ACIS-I-5	7.03	2474	-0.234	0.096	0.009	0.015	0.000000	0.000000	-1817.09	1061.67
2	FID	ACIS-I-6	7.04	2473	0.039	0.044	0.009	0.015	0.000000	0.000000	395.99	1706.69
3	GUIDE	308674680	8.86	4947	0.068	-0.269	0.093	0.145	55.747345	31.652644	-292.64	2129.66
4	GUIDE	309330608	9.26	4947	-0.021	0.187	0.113	0.183	56.696267	32.605248	-45.98	-2348.08
5	GUIDE	309336160	7.08	4948	-0.092	-0.035	0.081	0.131	56.670296	32.290187	-770.55	-1473.02
6	GUIDE	309205288	9.21	4944	0.044	0.066	0.092	0.150	55.920876	32.625581	1713.62	-788.30
7	GUIDE	309201336	9.41	4940	-0.000	0.048	0.115	0.184	55.980135	32.629910	1593.77	-922.71

2.4 Star Slots

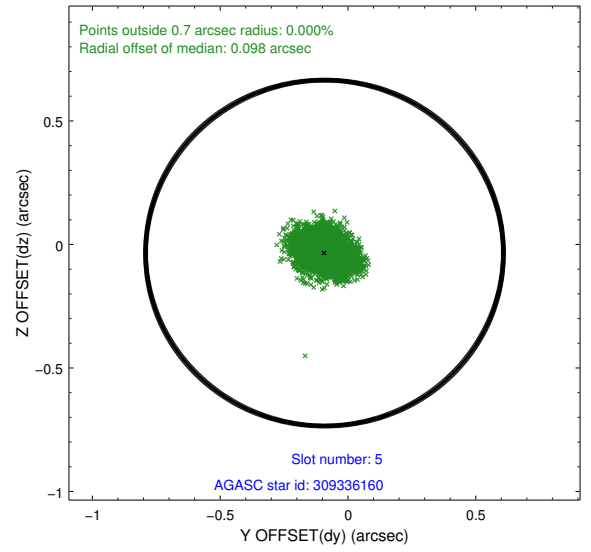
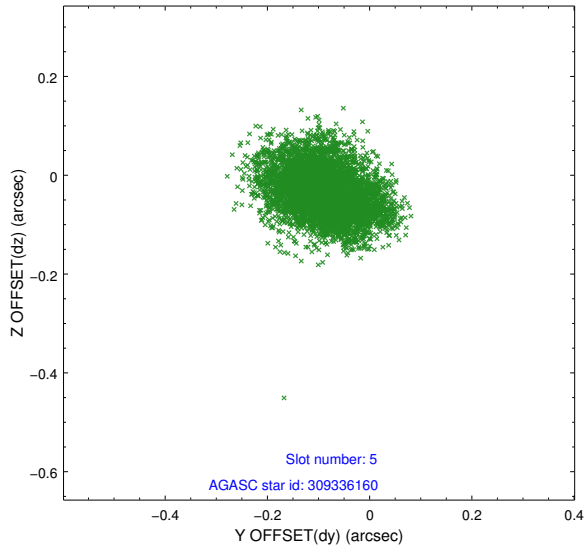
2.4.1 Slot 3



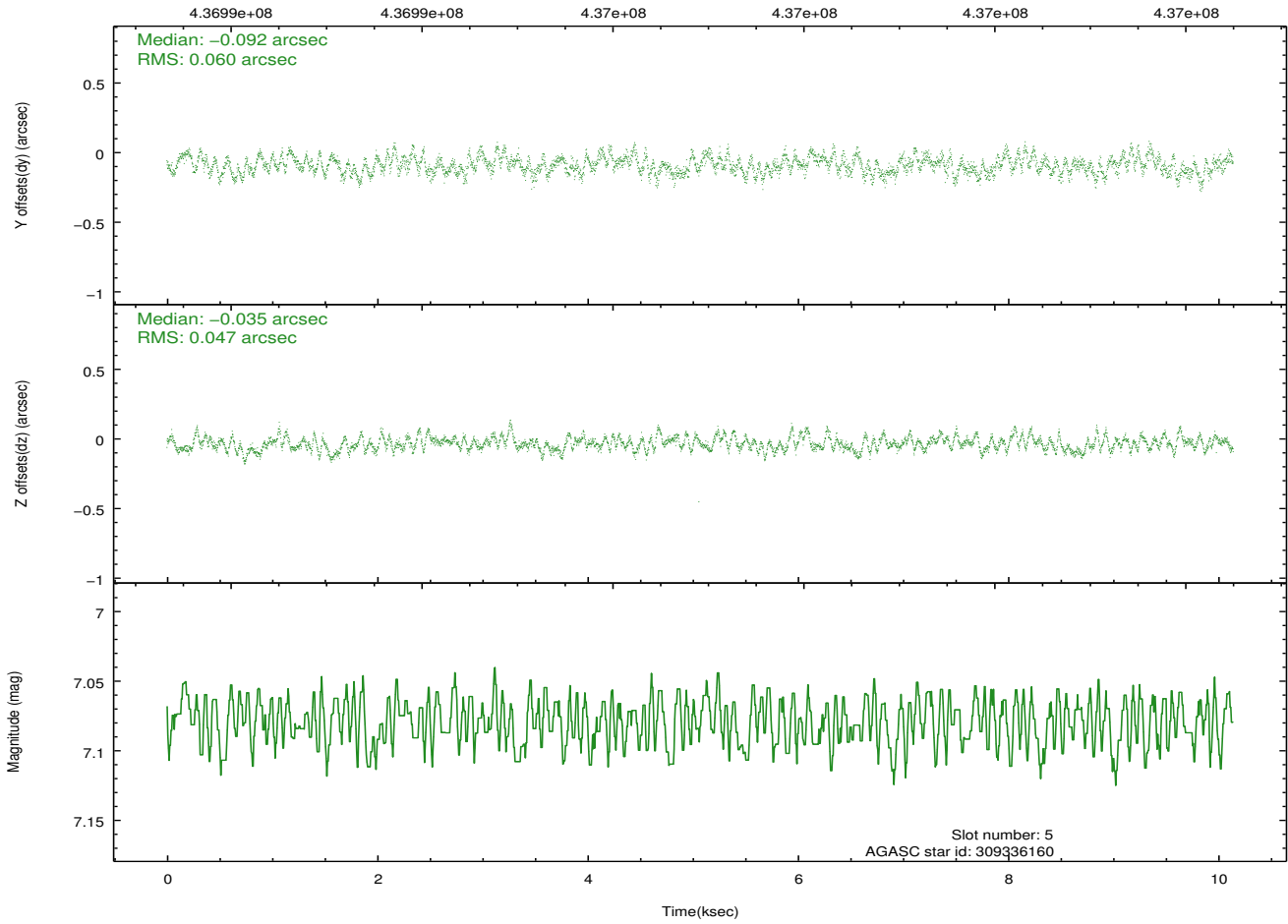
2.4.2 Slot 4



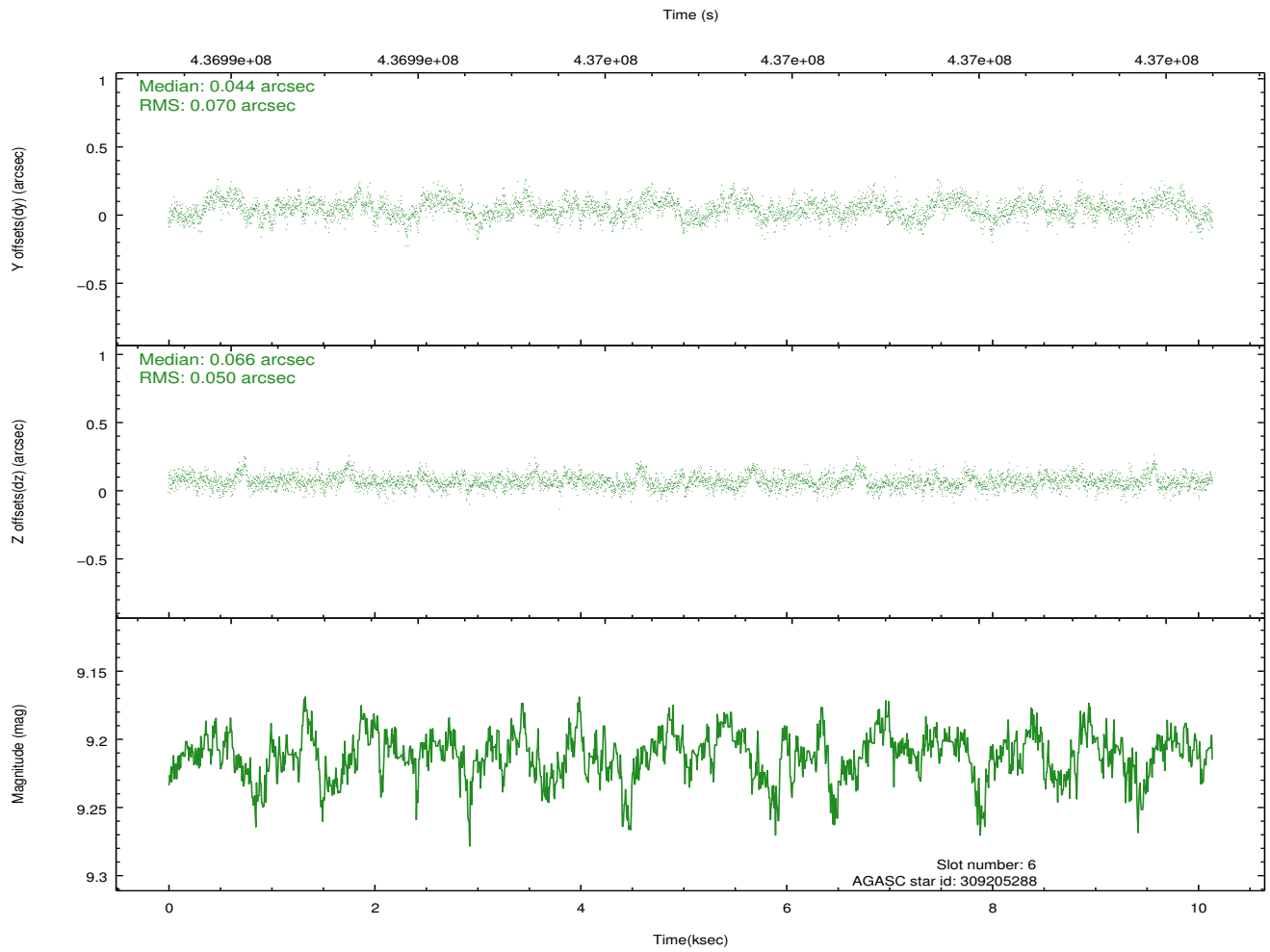
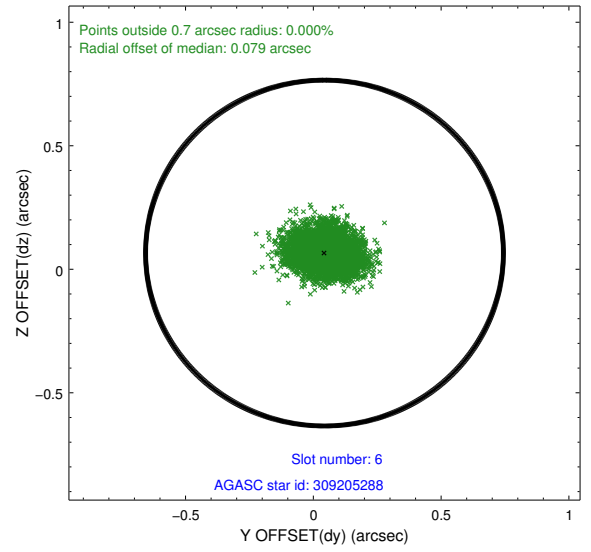
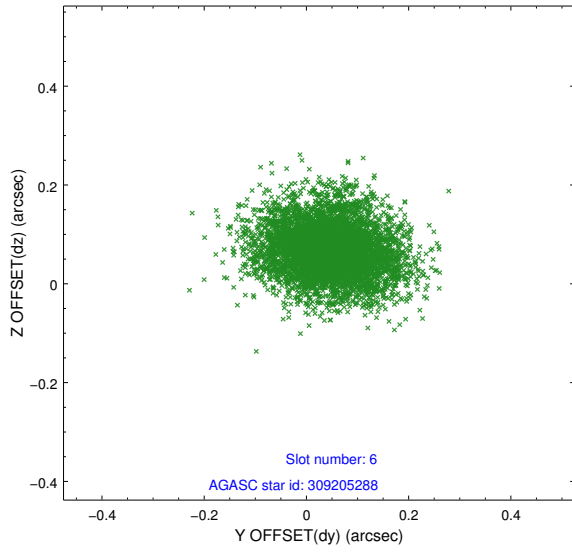
2.4.3 Slot 5



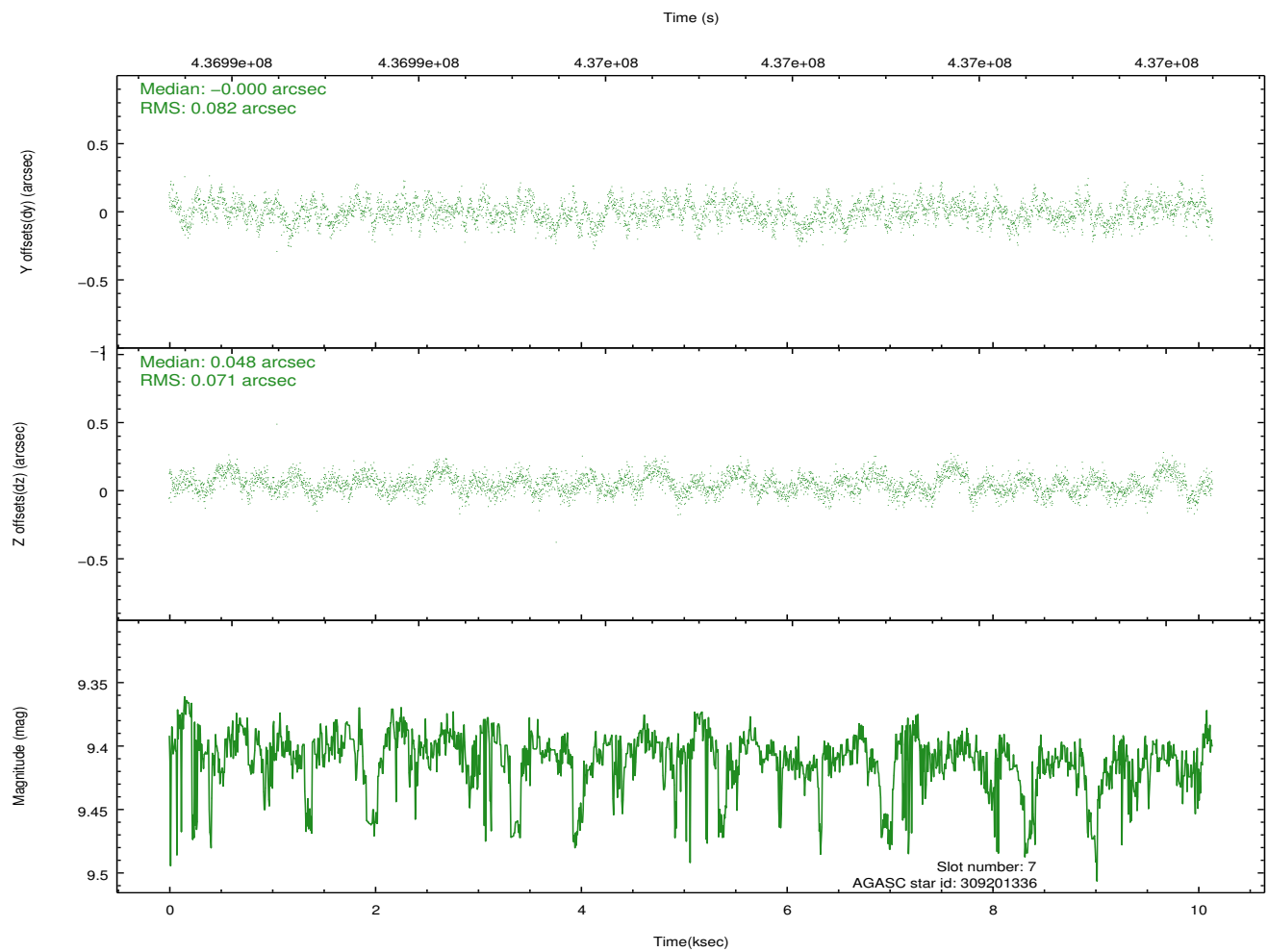
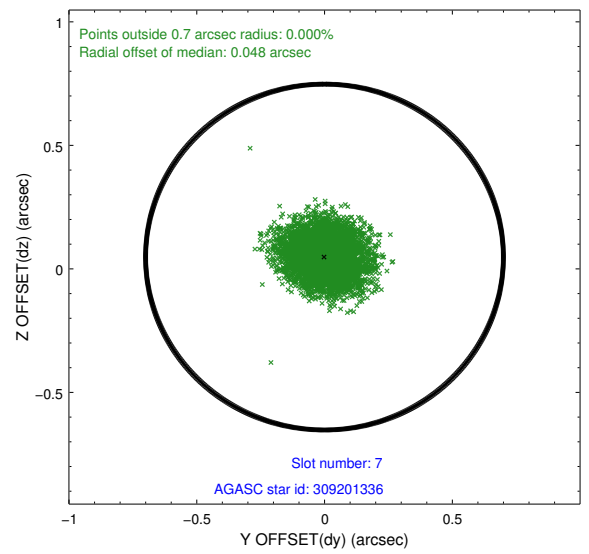
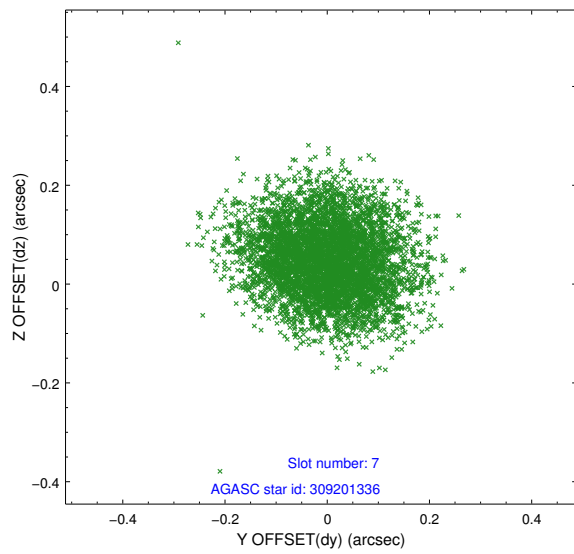
Time (s)



2.4.4 Slot 6

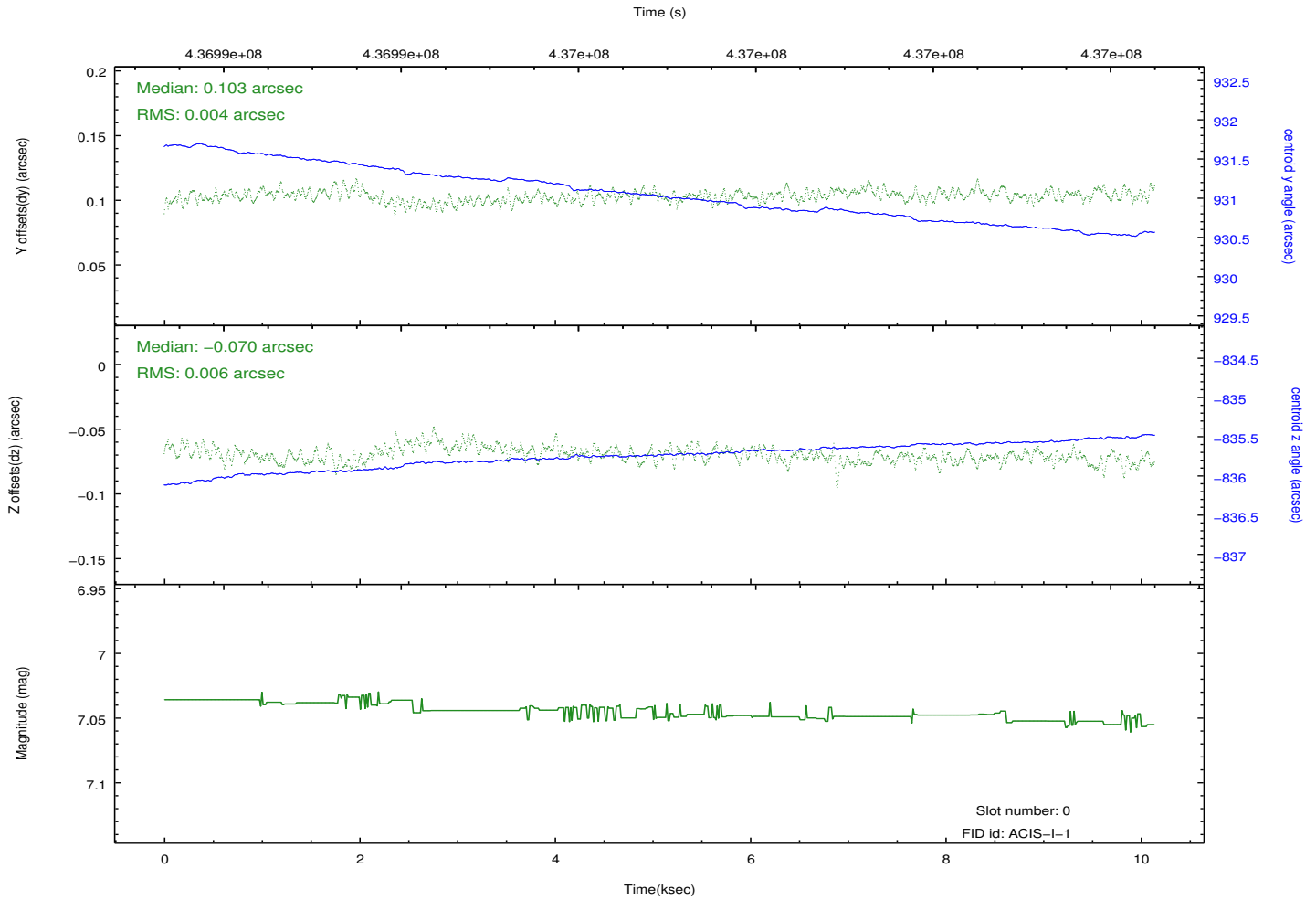
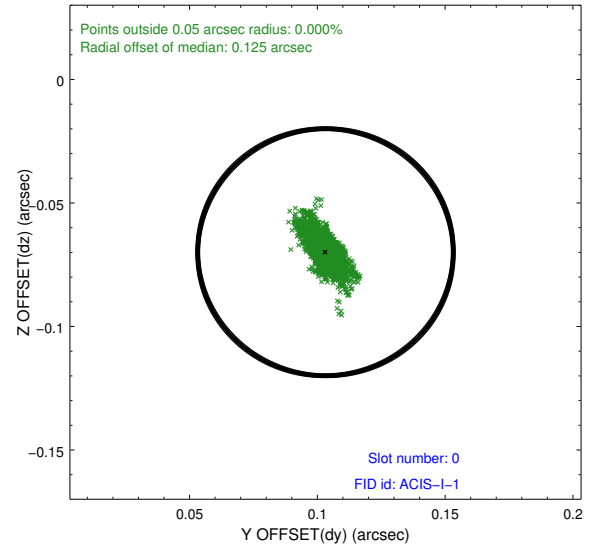
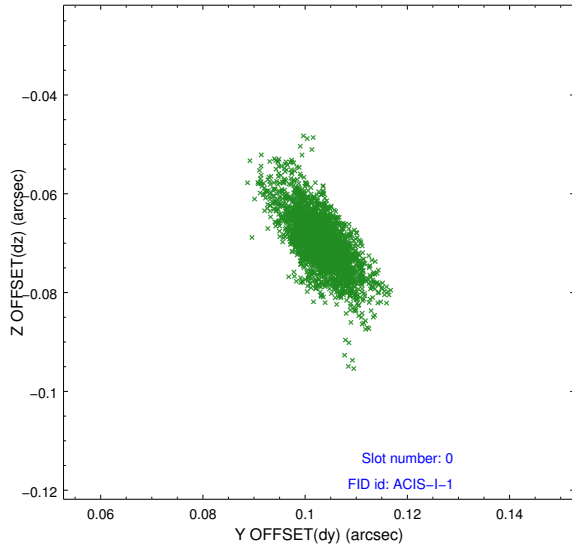


2.4.5 Slot 7

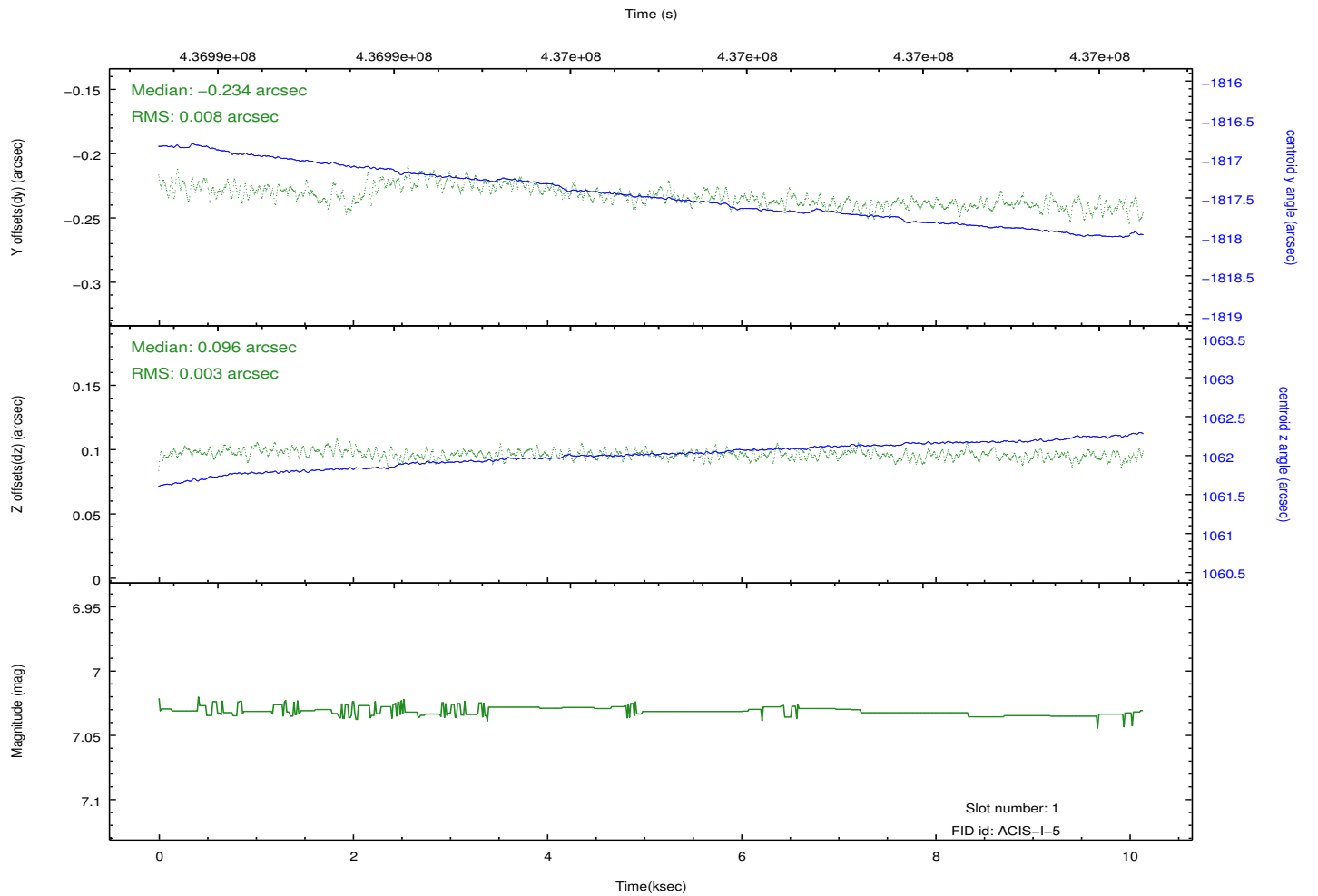
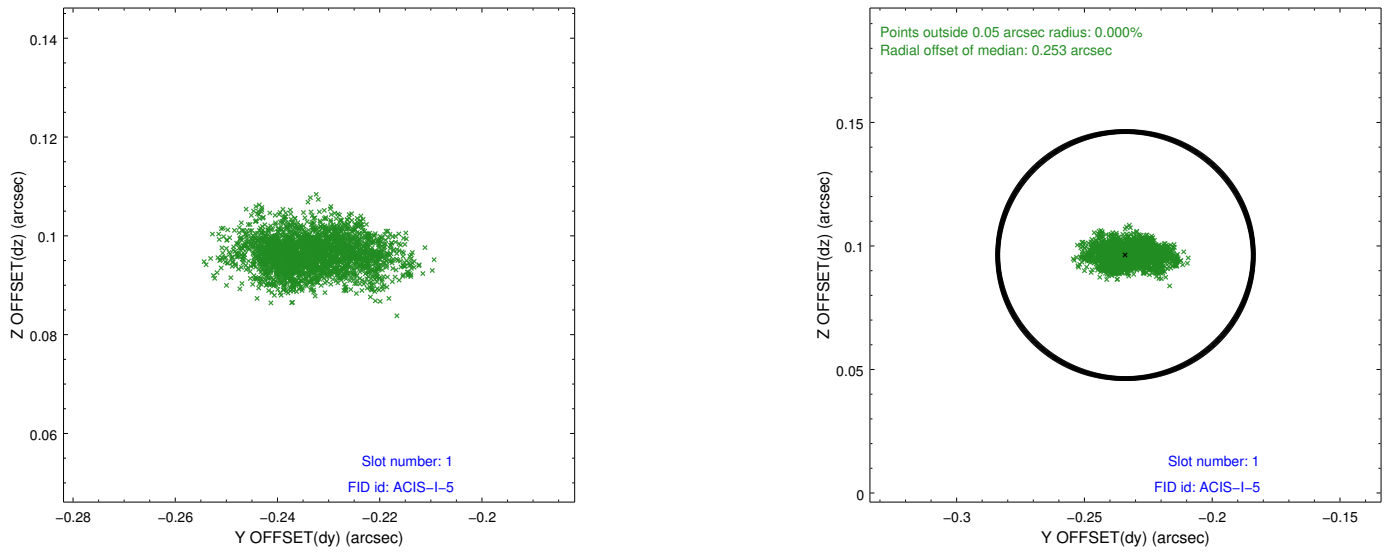


2.5 FID Slots

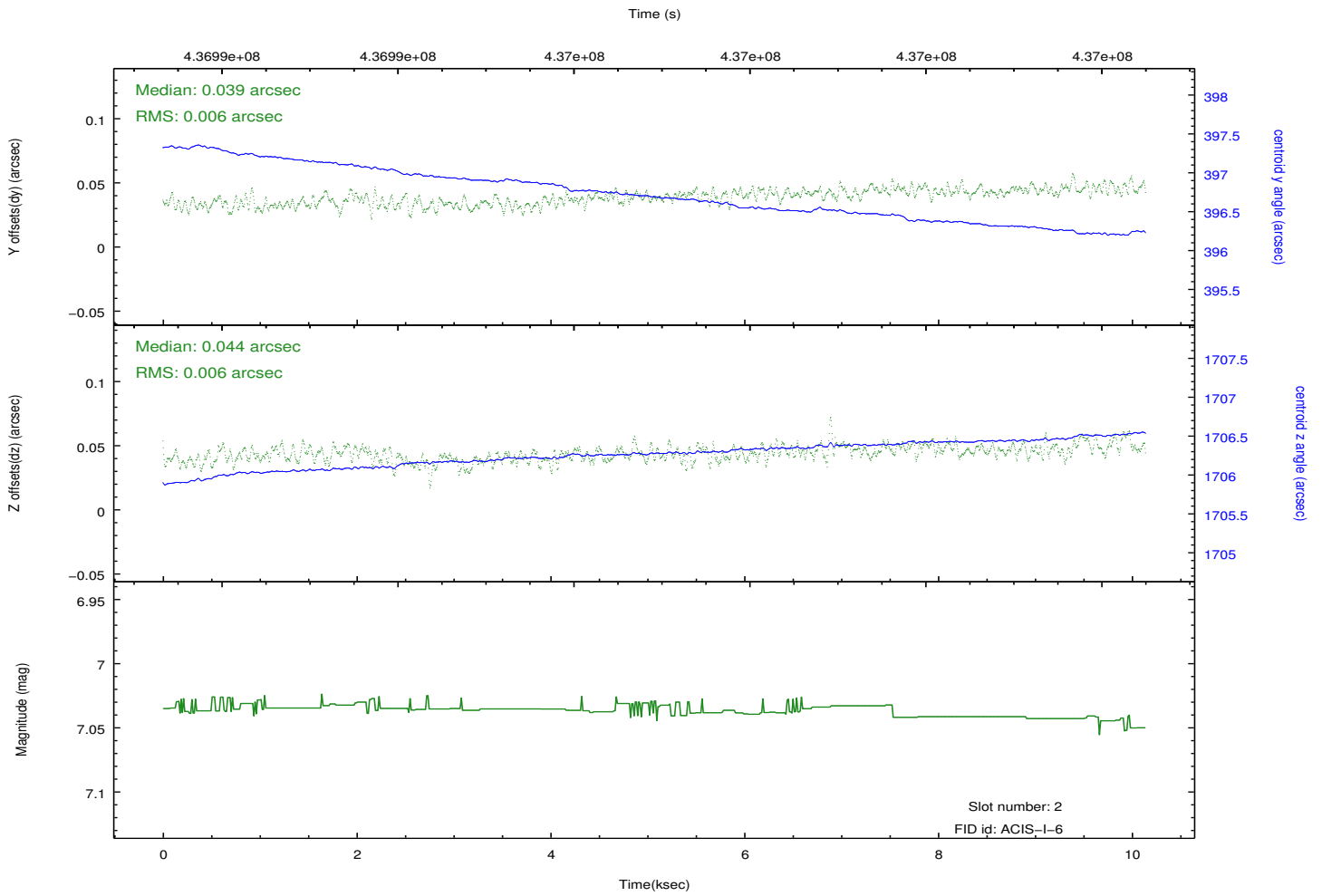
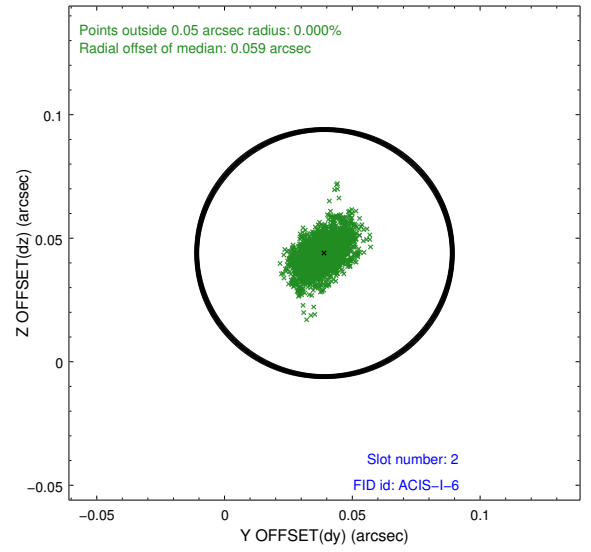
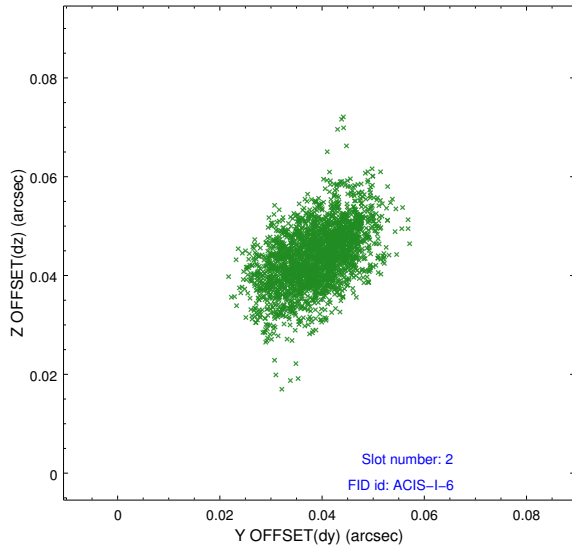
2.5.1 Slot 0



2.5.2 Slot 1



2.5.3 Slot 2



A Summary

A.1 Status

V&V Scientist	Jen Lauer
V&V Date (YYYY-MM-DD)	2012.02.28
V&V Edition	1
V&V Disposition and Status	OK
V&V Charge Time	10.044000077248

A.2 Comments

Joint Proposal: CX0-Spitzer. Monitor constraint met, follows obs13431 by three days.