

V&V Reference Report

L2 ASCDS Version : 8.5.1.1

Observation 1452 - L2 Version 5
Chandra X-Ray Center

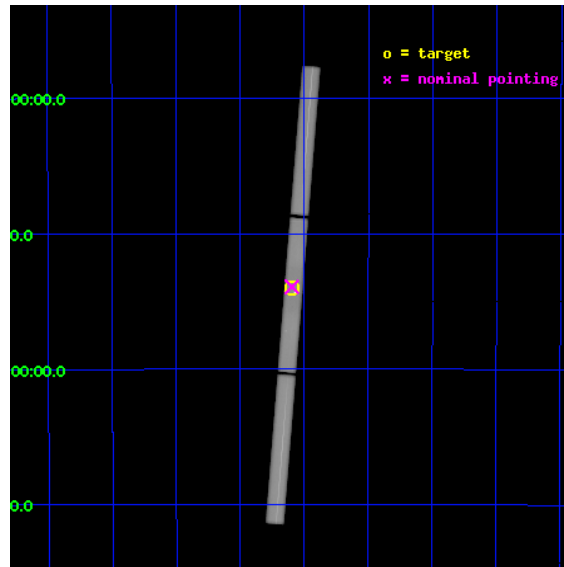
L2 Processing Date : Jan 8 2013

Contents

1	Front	2
2	OBI	3
2.1	OBI	3
2.1.1	Images	3
2.1.2	Parameters	4
2.1.3	Events	4
2.2	Compared Parameters	5
2.3	Aspect	6
2.4	Star Slots	9
2.4.1	Slot 3	9
2.4.2	Slot 4	10
2.4.3	Slot 5	11
2.4.4	Slot 6	12
2.4.5	Slot 7	13
2.5	FID Slots	14
2.5.1	Slot 0	14
2.5.2	Slot 1	15
2.5.3	Slot 2	16
3	Gratings	17
3.1	LETG Arm	17
A	Summary	19
A.1	Status	19
A.2	Comments	19

1 Front

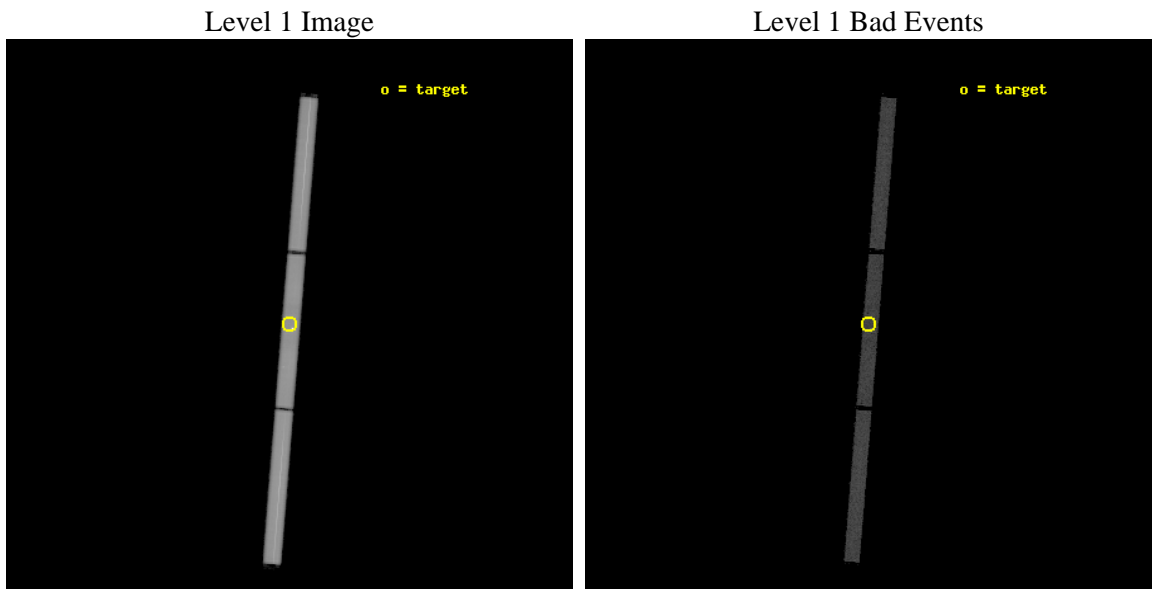
seq_num	280402	Sequence number
obs_id	1452	Observation id
title	 	Proposal title
observer	Dr. CXC Calibration	Principal investigator
object	SIRIUS B	Source name
ra_targ	101.295833	Observer's specified target RA [deg]
dec_targ	-16.701389	Observer's specified target Dec [deg]
ra_nom	101.298165	Nominal RA [deg]
dec_nom	-16.696431	Nominal Dec [deg]
roll_nom	72.408889	Nominal Roll [deg]
revision	5	Processing version of data
ontime	27955.082303166	[s]
livetime	26336.169500207	Ontime multiplied by DTCOR
l2events	3017096	Number of level 2 events



2 OBI

2.1 OBI

2.1.1 Images



2.1.2 Parameters

obi_num	1	Obi number	sched_exp_time	27972.000000	[s] Scheduled observation exposure time
ascdsver	8.5.1.1	Processing system revision	ontime	27955.082303166	[s]
caldbver	4.5.5	 	l1events	3677069	Number of level 1 events
date	2013-01-07T21:01:42	Date and time of file creation			
revision	4	Processing version of data			

2.1.3 Events

Level 1 Events

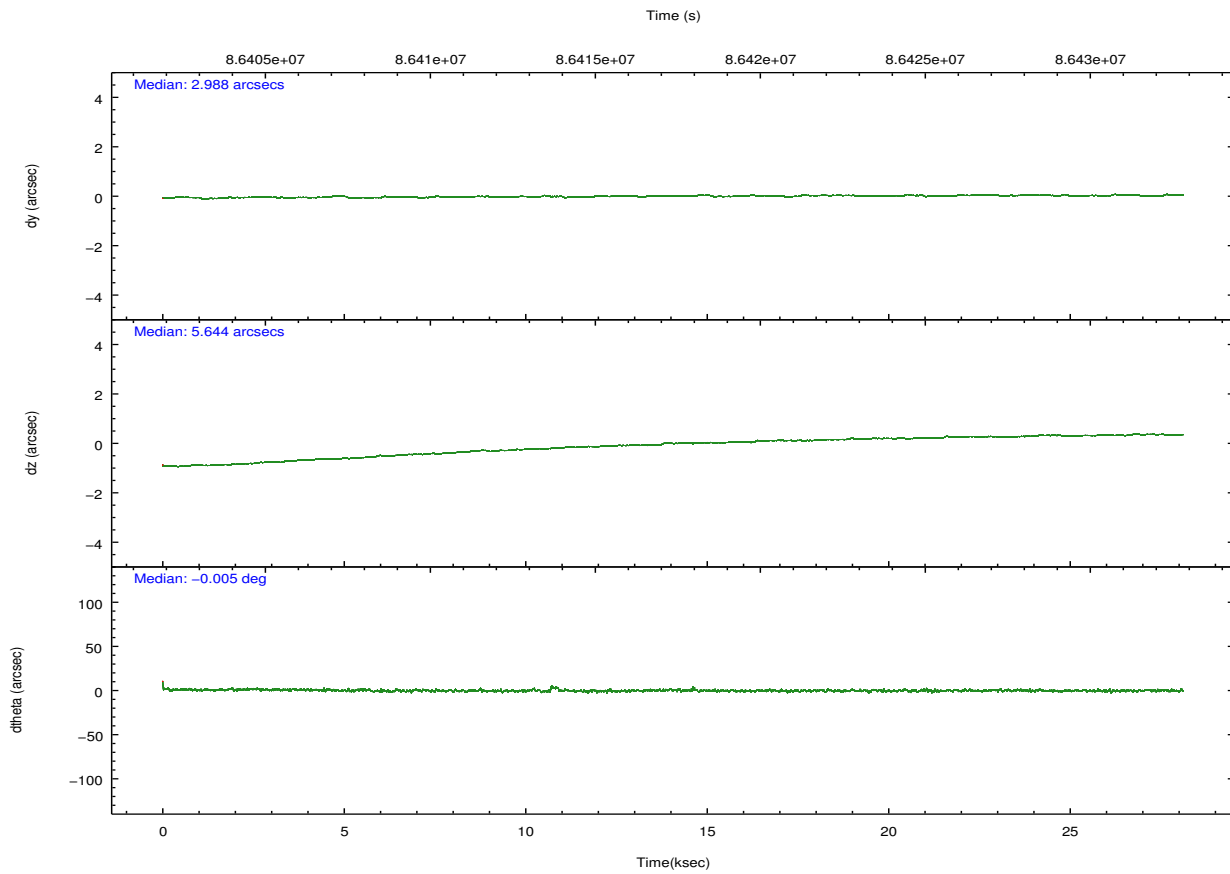
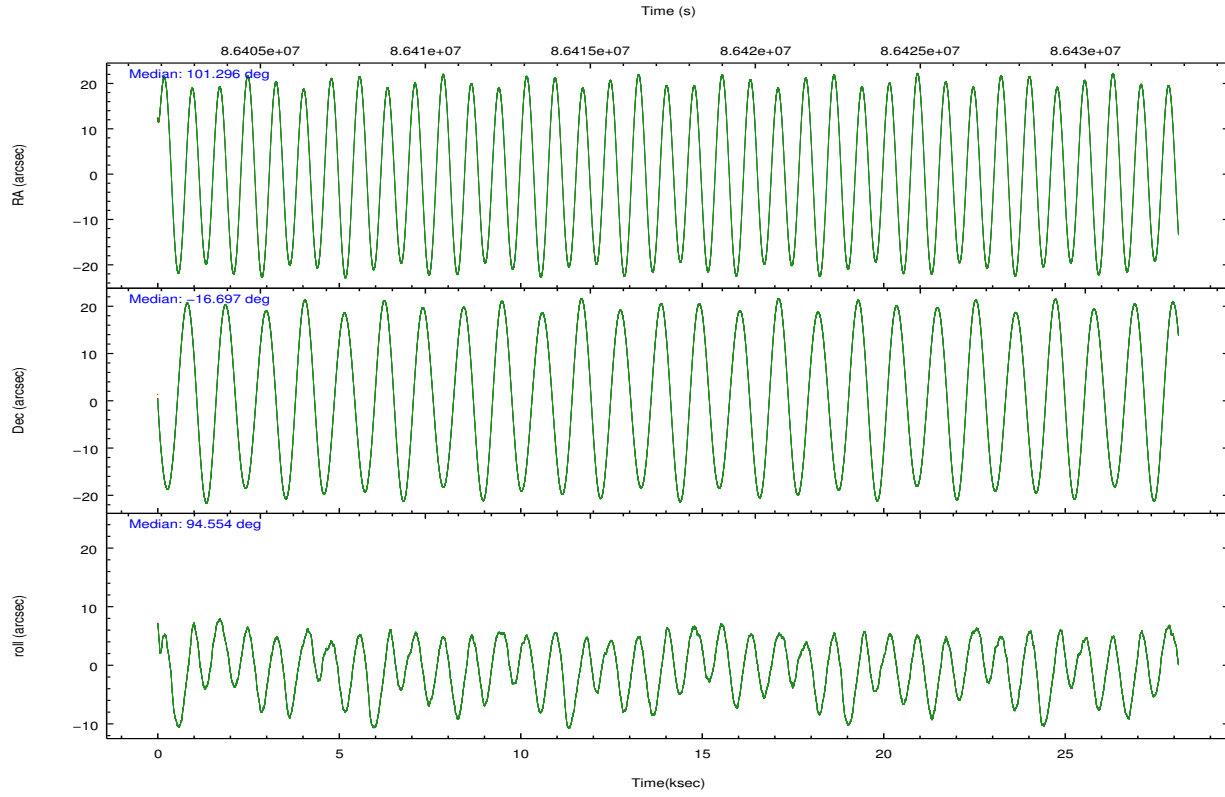
	segment 1	segment 2	segment 3
level 1 events	1328676	1179809	1168584
rejected events	26131	23128	23589
rejected %	1%	1%	2%

2.2 Compared Parameters

Parameter	Planned	Actual
Instrument	HRC	HRC
Detector	HRC-S	HRC-S
Grating	LETG	LETG
Data mode	OBSERVING	OBSERVING
Observation mode	POINTING	POINTING
[deg] Pointing RA	101.313728	101.2957065703174
[deg] Pointing Dec	-16.719437	-16.69650179419624
[deg] Pointing Roll	94.497232	94.55939011195053
[mm] SIM focus pos	-1.429586	-1.428180813131781
[mm] SIM defocus	0.1037507710433287	0.1051558262725154
[mm] SIM translation stage pos	250.455976	250.466033080201
[mm] SIM translation stage offset	0	-0.01005468664627074
[s] Observation start time (MET)	86403444.184000	86402129.91112199
Observation start date	2000-09-27T00:56:20	2000-09-27T00:35:29
[s] Observation end time (MET)	86431416.184000	86432181.887255
Observation end date	2000-09-27T08:42:32	2000-09-27T08:56:21

Parameter	Planned	Actual
Obspar format version number	7	7
Obspar file type	PREDICTED	ACTUAL
Obspar update status	NONE	UPDATED

2.3 Aspect

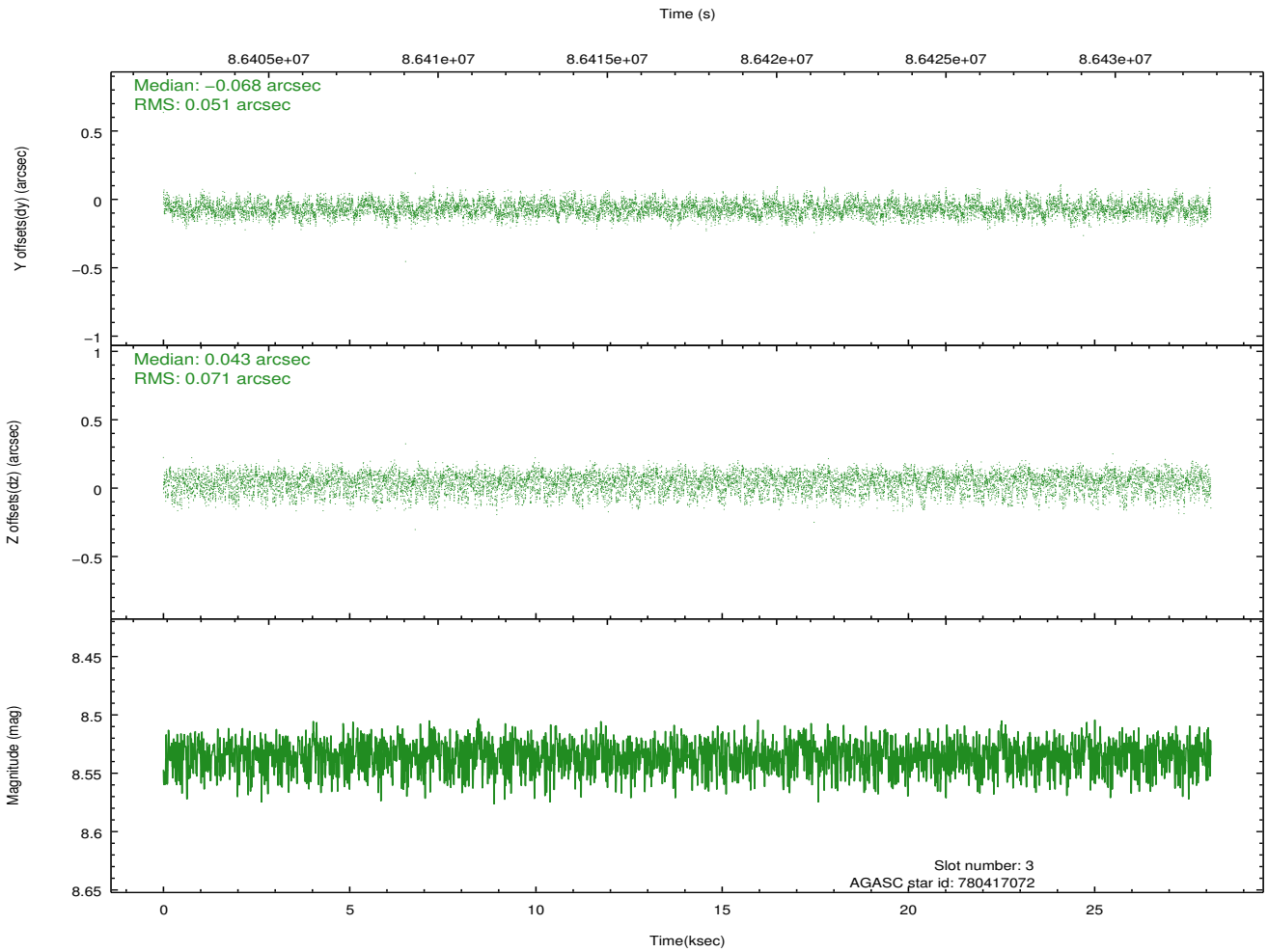
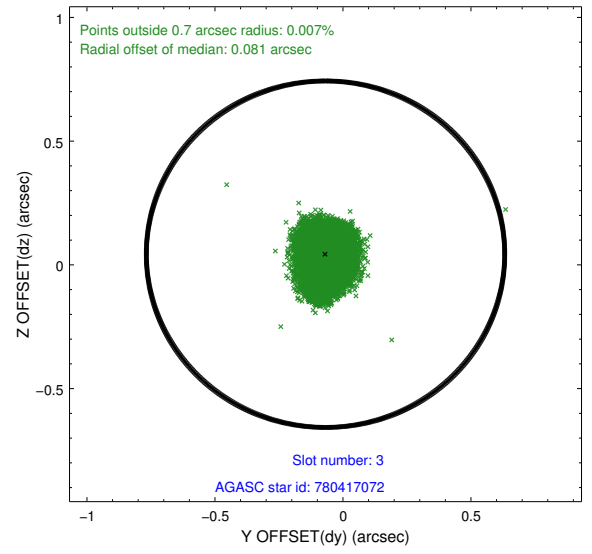
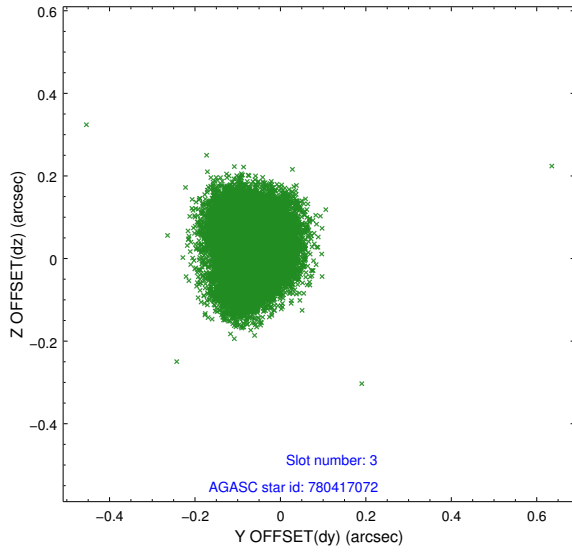


Slot Statistics

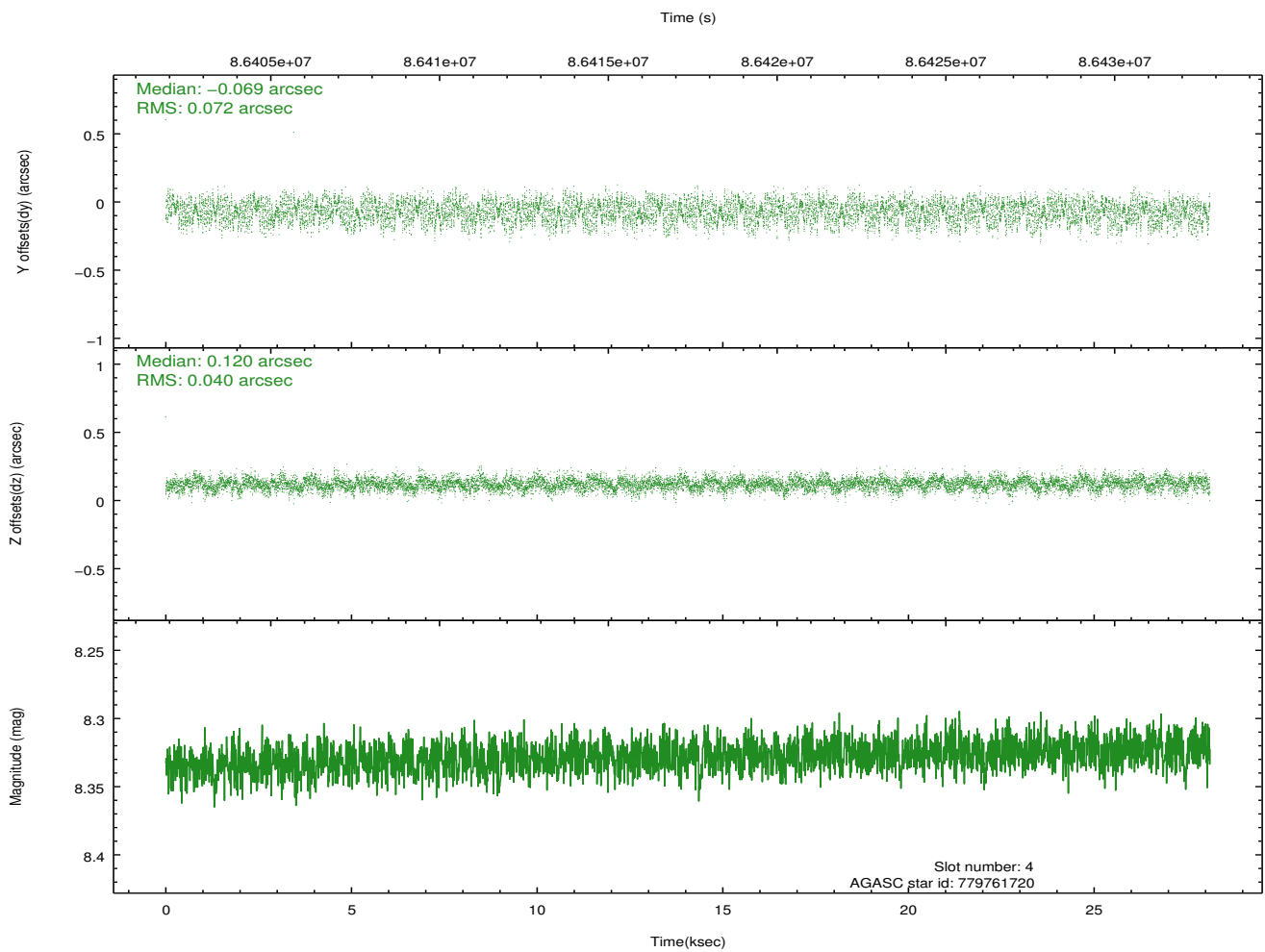
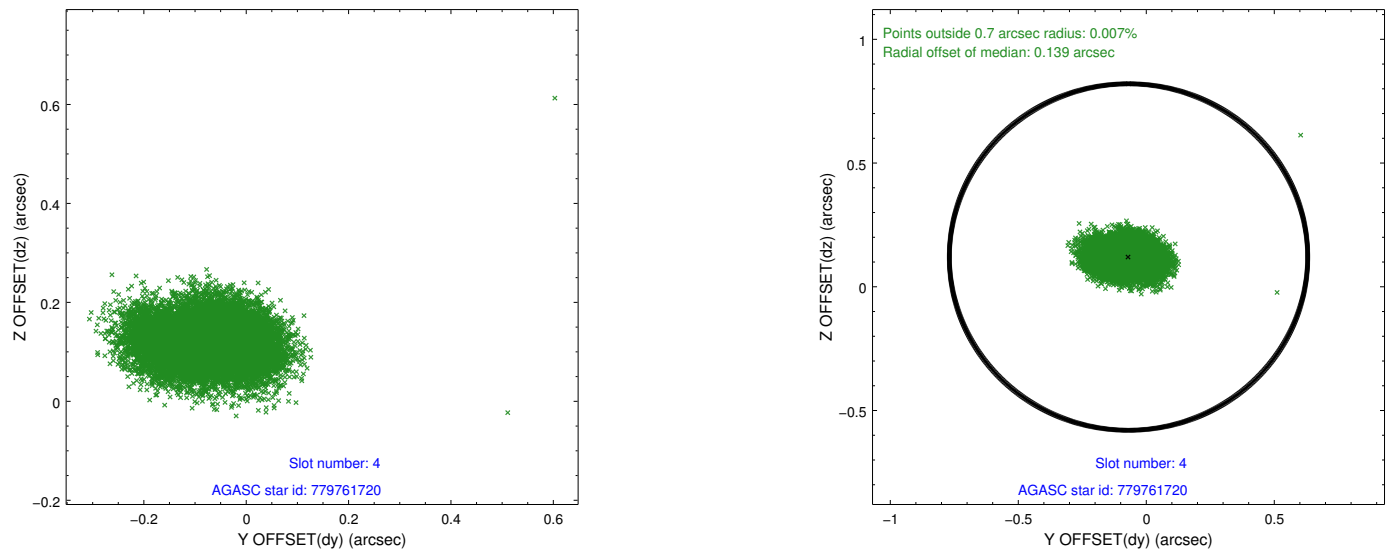
slot	status	id	mag	n_pts	med_dy	med_dz	dr1	dr2	ra	dec	mean_y	mean_z
0	FID	HRC-S-1	7.01	6860	0.131	-0.111	0.005	0.009	0.000000	0.000000	-1157.02	-454.04
1	FID	HRC-S-2	7.00	6860	0.115	-0.172	0.011	0.023	0.000000	0.000000	1242.48	-446.75
2	FID	HRC-S-4	6.97	6859	0.156	-0.020	0.010	0.022	0.000000	0.000000	1241.43	578.13
3	GUIDE	780417072	8.54	13717	-0.068	0.043	0.094	0.147	102.041439	-17.229692	-2031.60	-2349.99
4	GUIDE	779761720	8.33	13719	-0.069	0.120	0.087	0.142	101.810081	-16.066492	2207.04	-1895.49
5	GUIDE	780283312	8.67	13713	-0.013	0.022	0.089	0.139	101.569387	-16.934625	-841.28	-816.79
6	GUIDE	780284656	9.96	13709	0.059	-0.191	0.121	0.198	100.937496	-17.040854	-1053.01	1381.85
7	GUIDE	780272032	9.41	13706	0.088	0.014	0.083	0.137	101.484293	-17.270688	-2024.19	-428.64

2.4 Star Slots

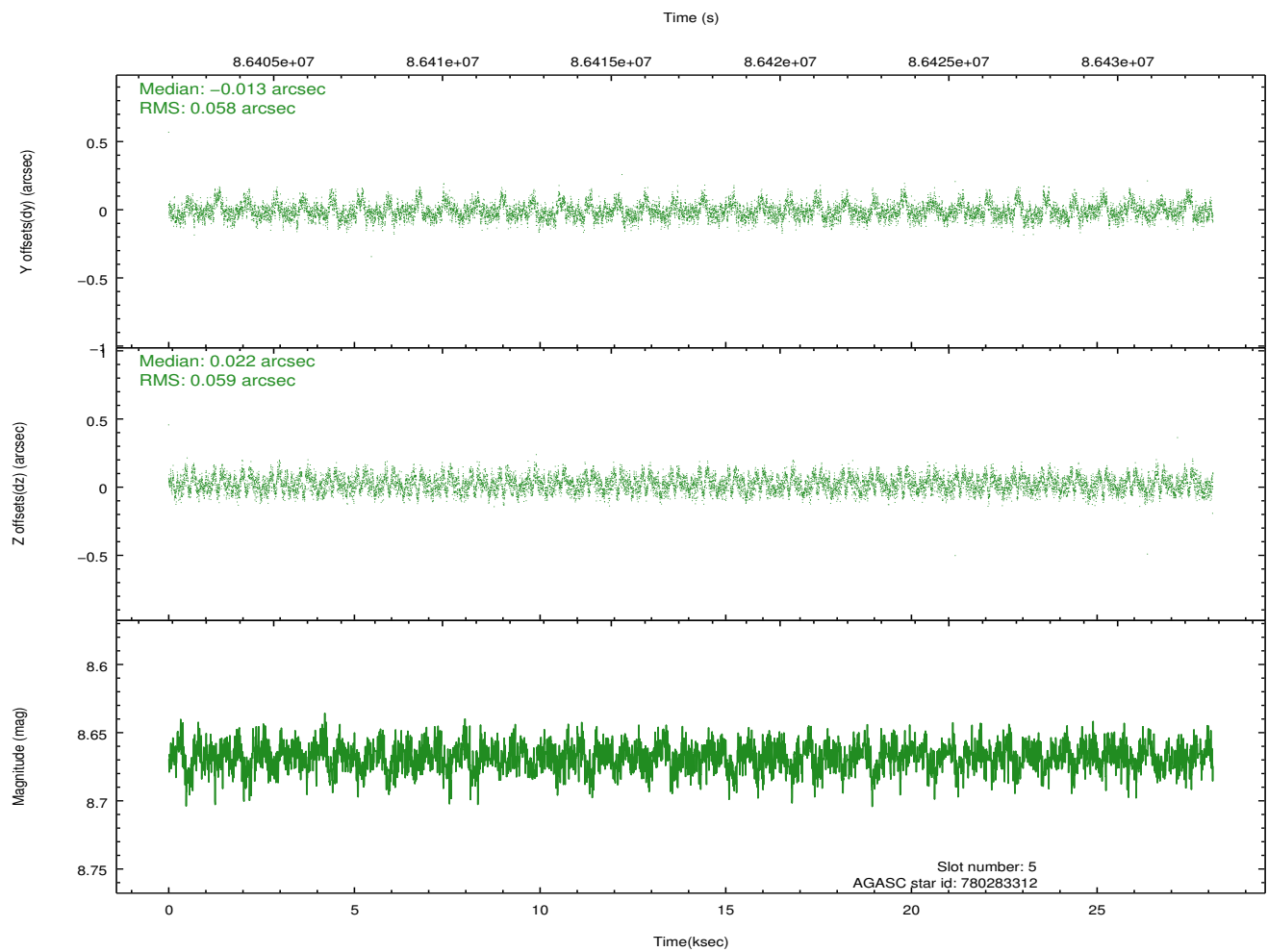
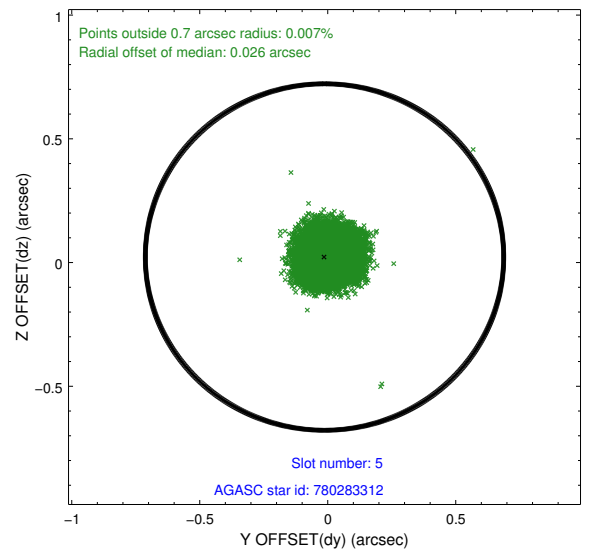
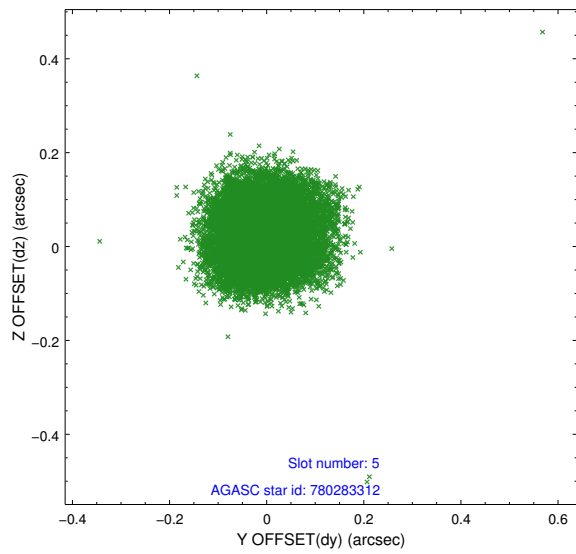
2.4.1 Slot 3



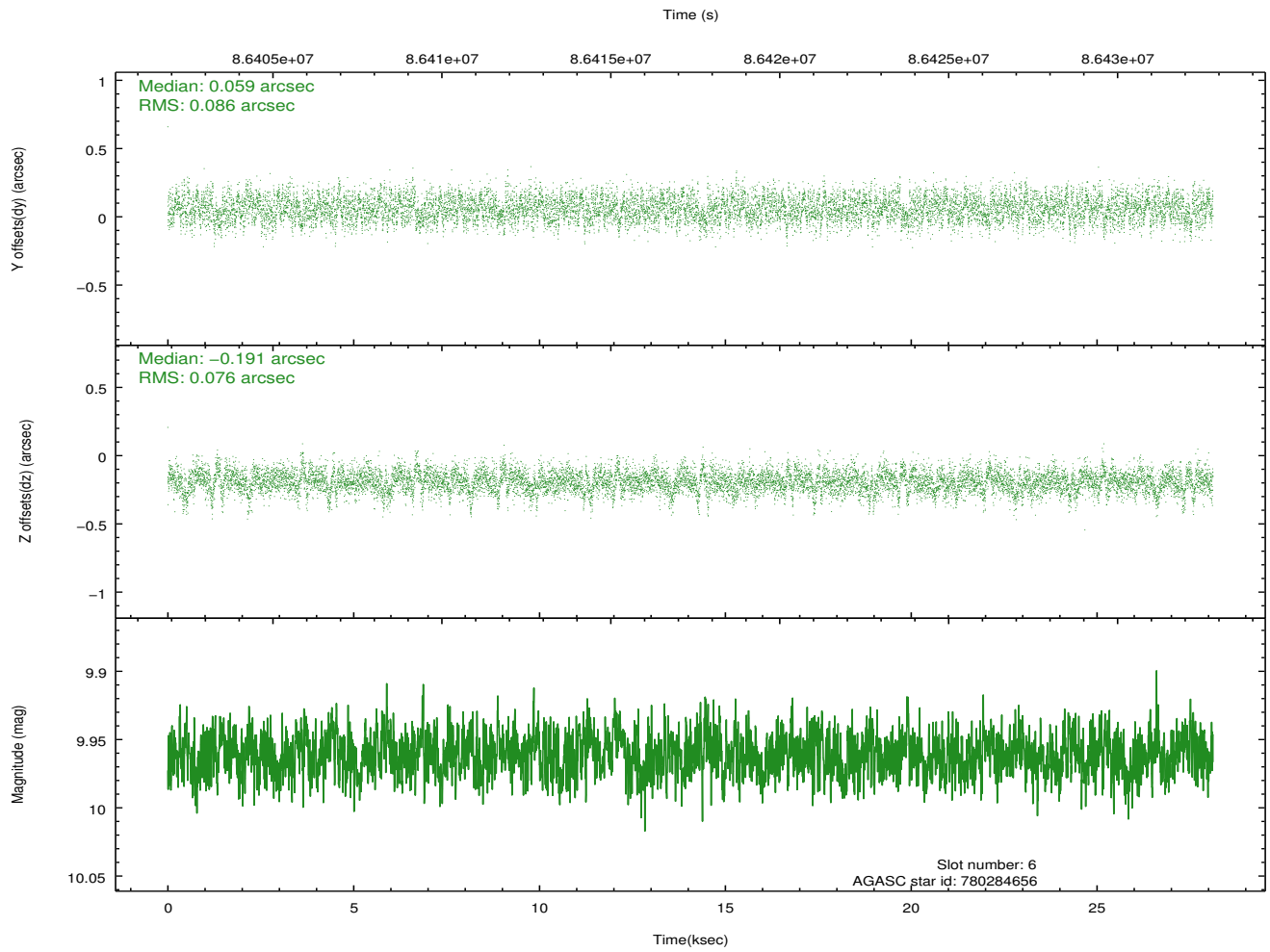
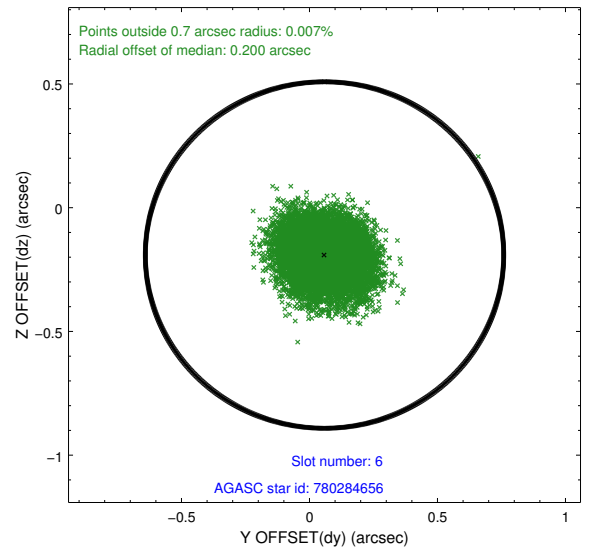
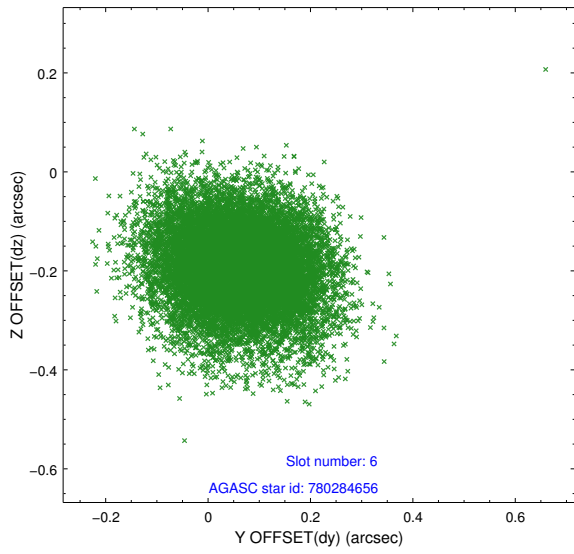
2.4.2 Slot 4



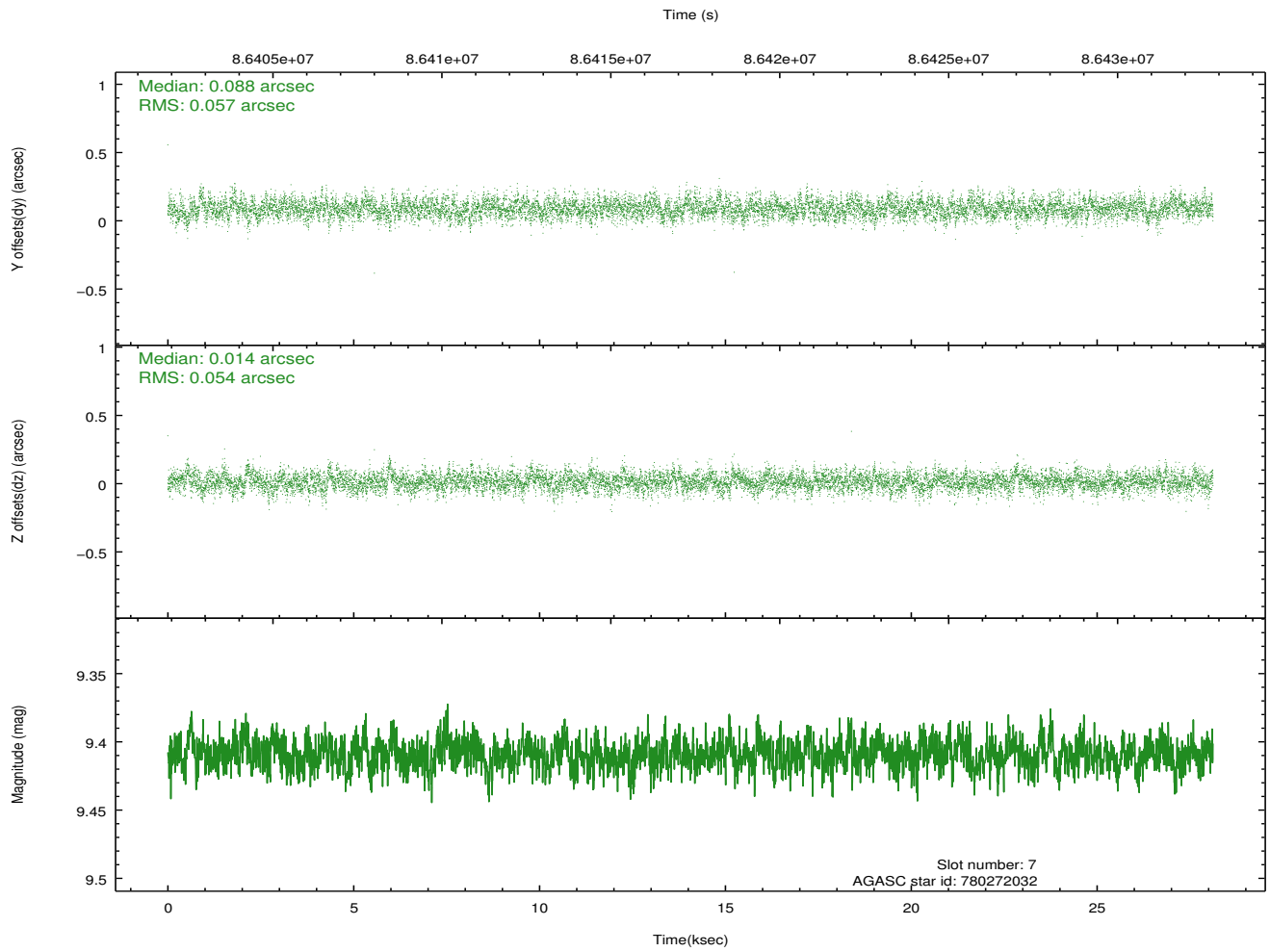
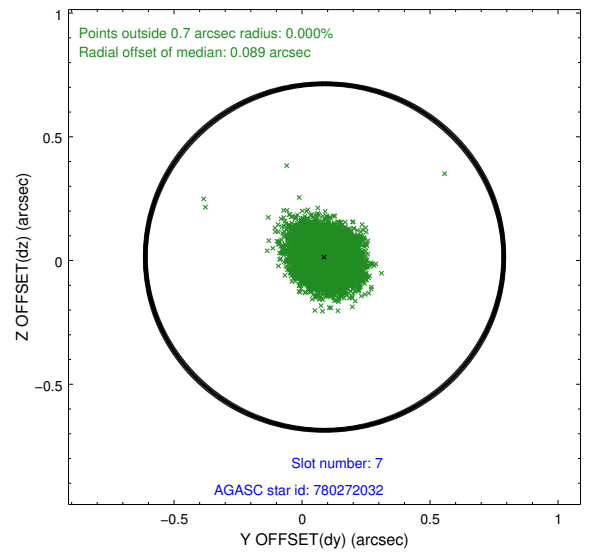
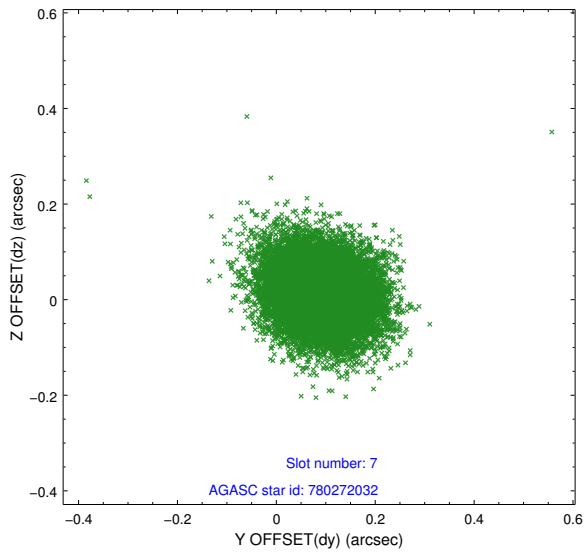
2.4.3 Slot 5



2.4.4 Slot 6

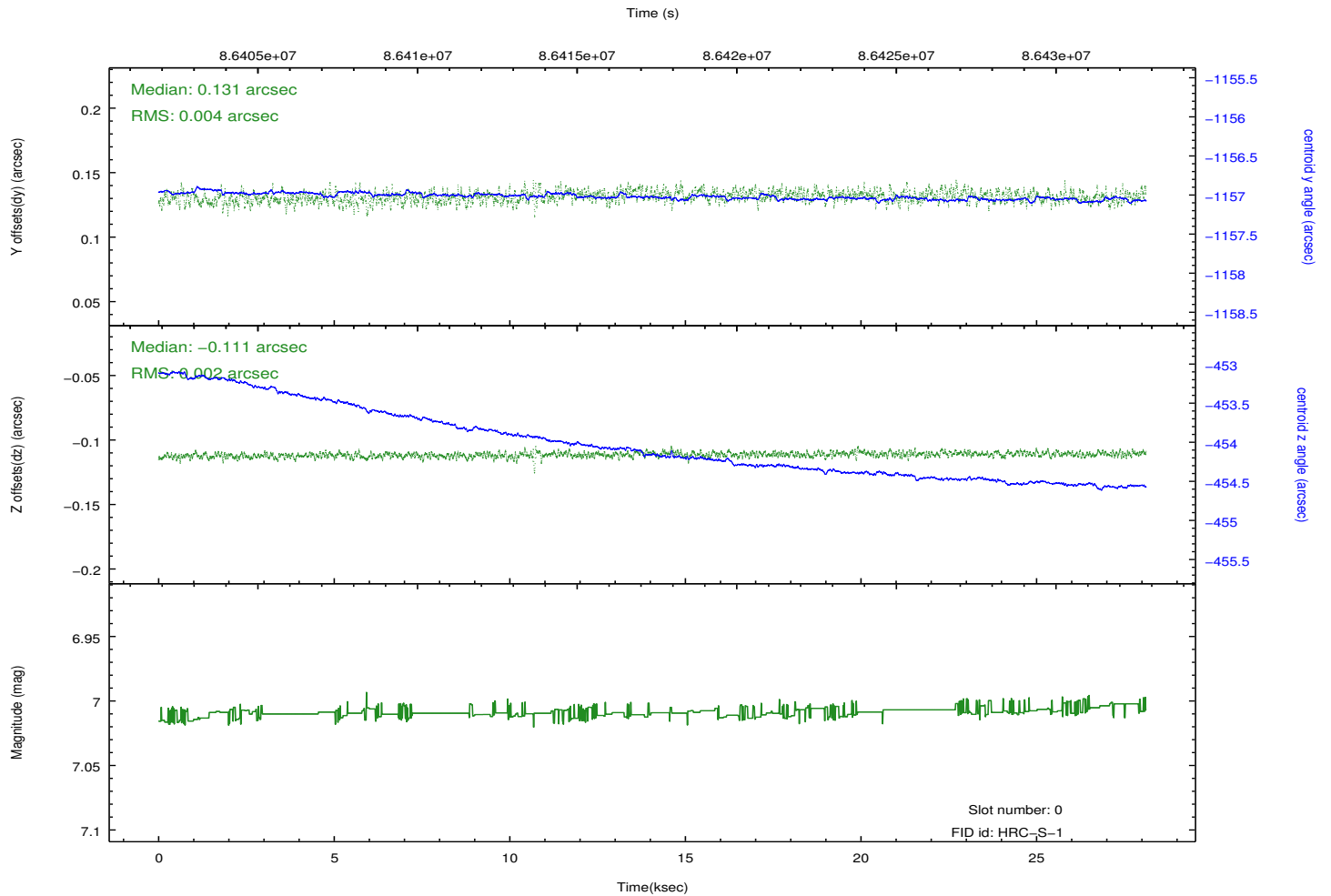
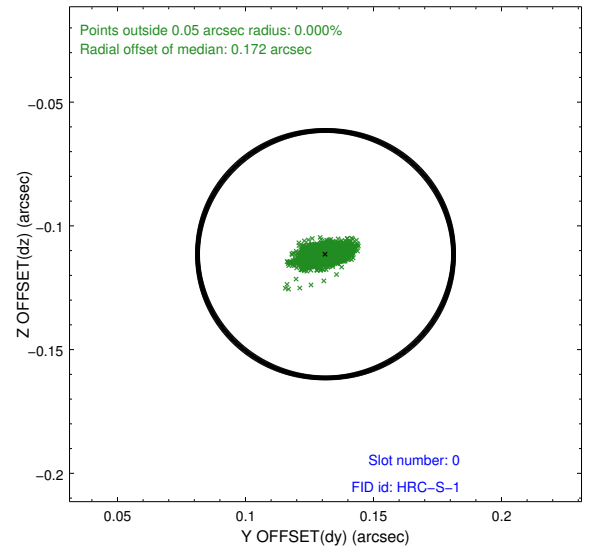
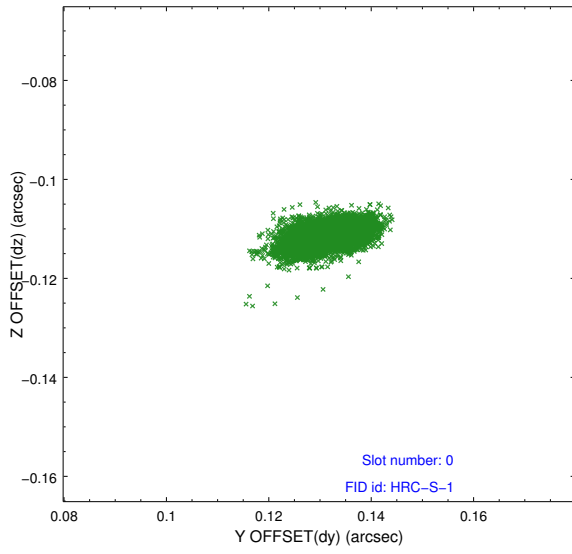


2.4.5 Slot 7

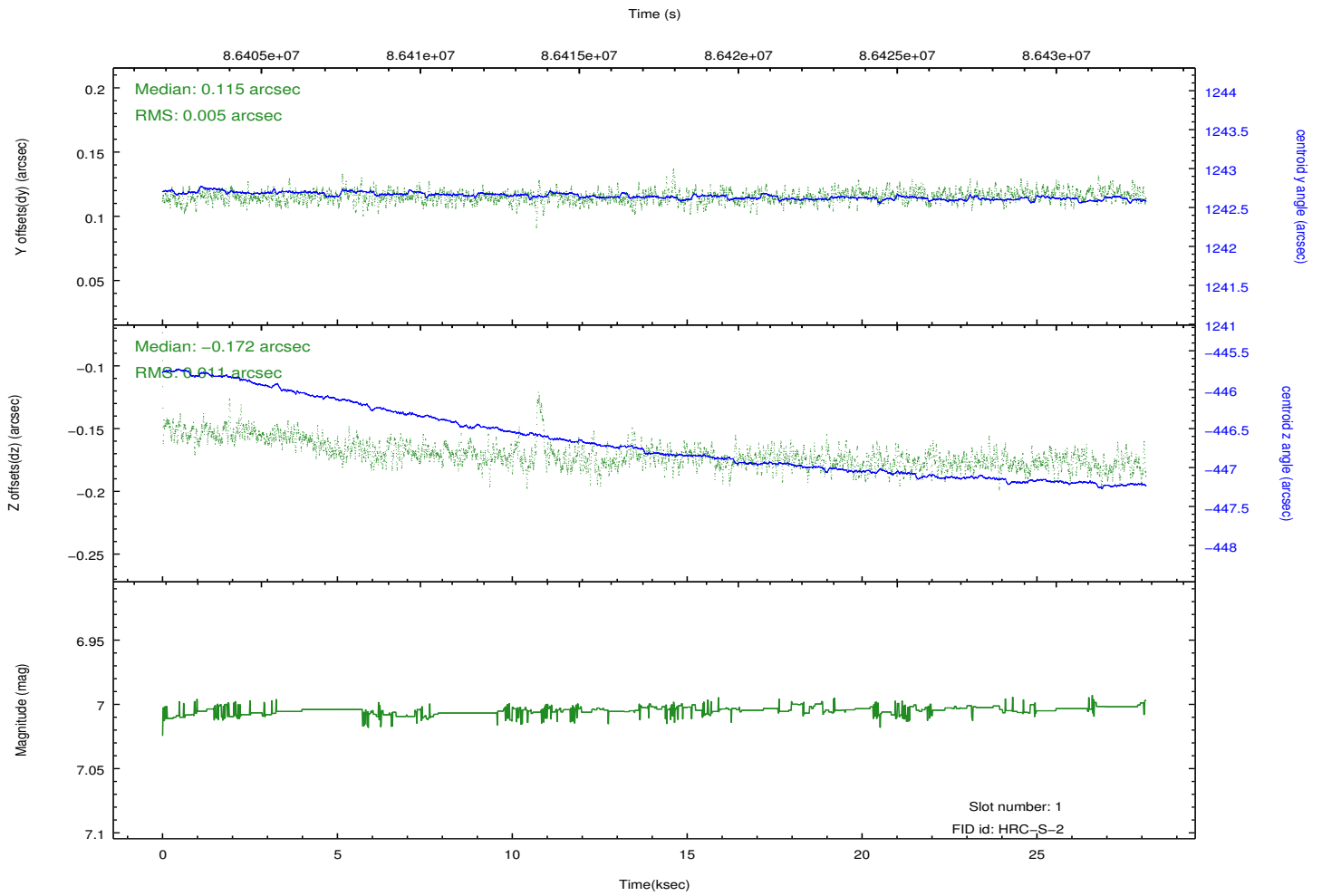
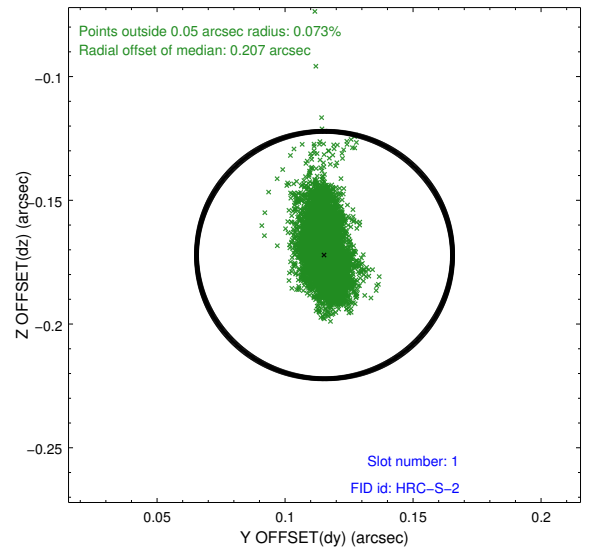
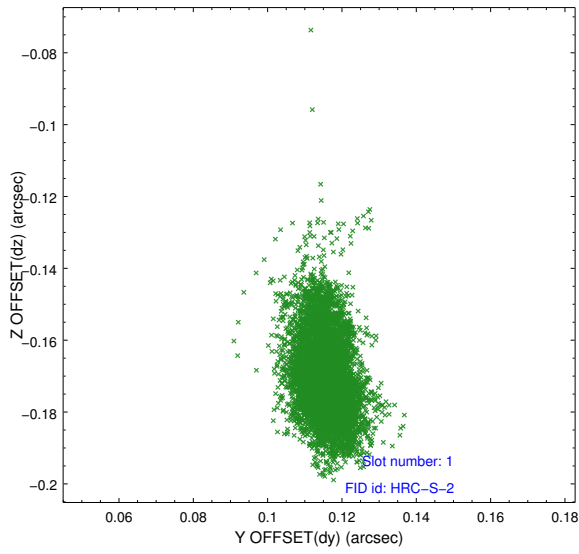


2.5 FID Slots

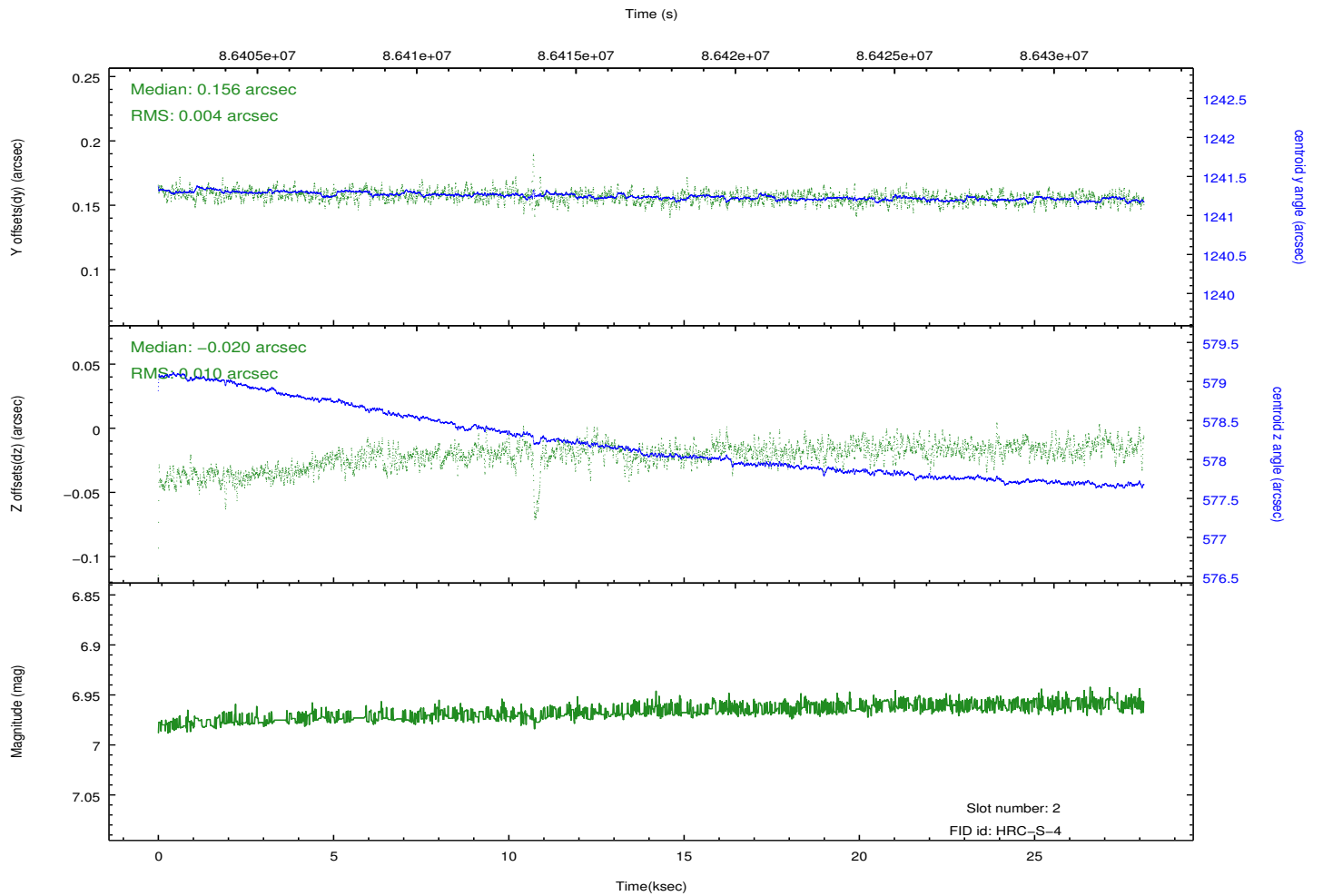
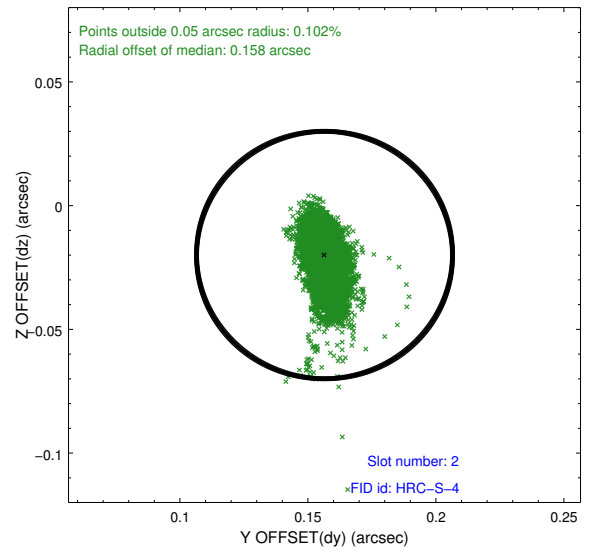
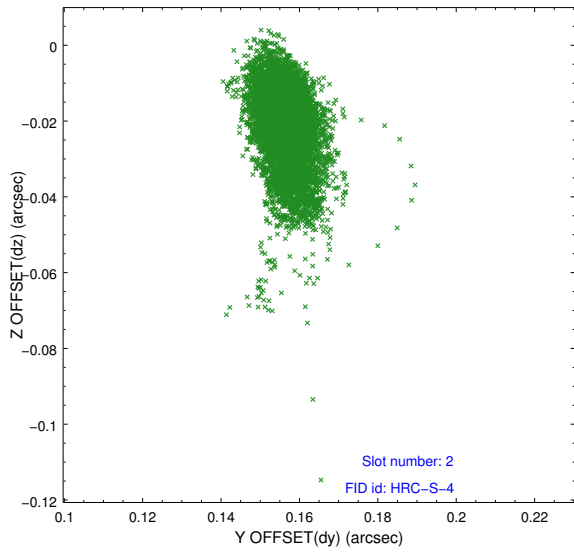
2.5.1 Slot 0



2.5.2 Slot 1

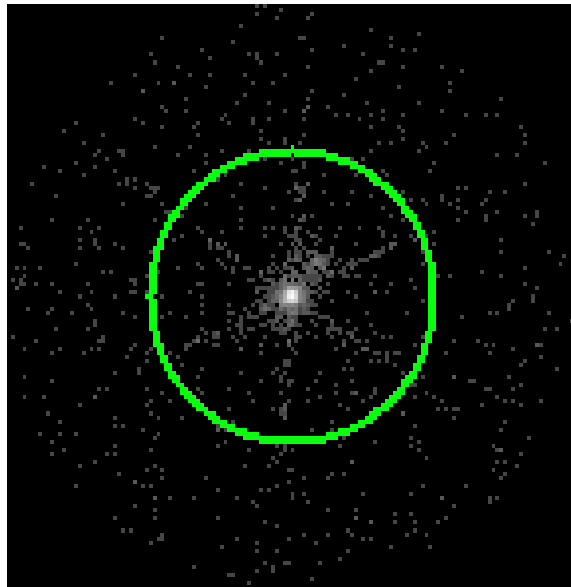


2.5.3 Slot 2

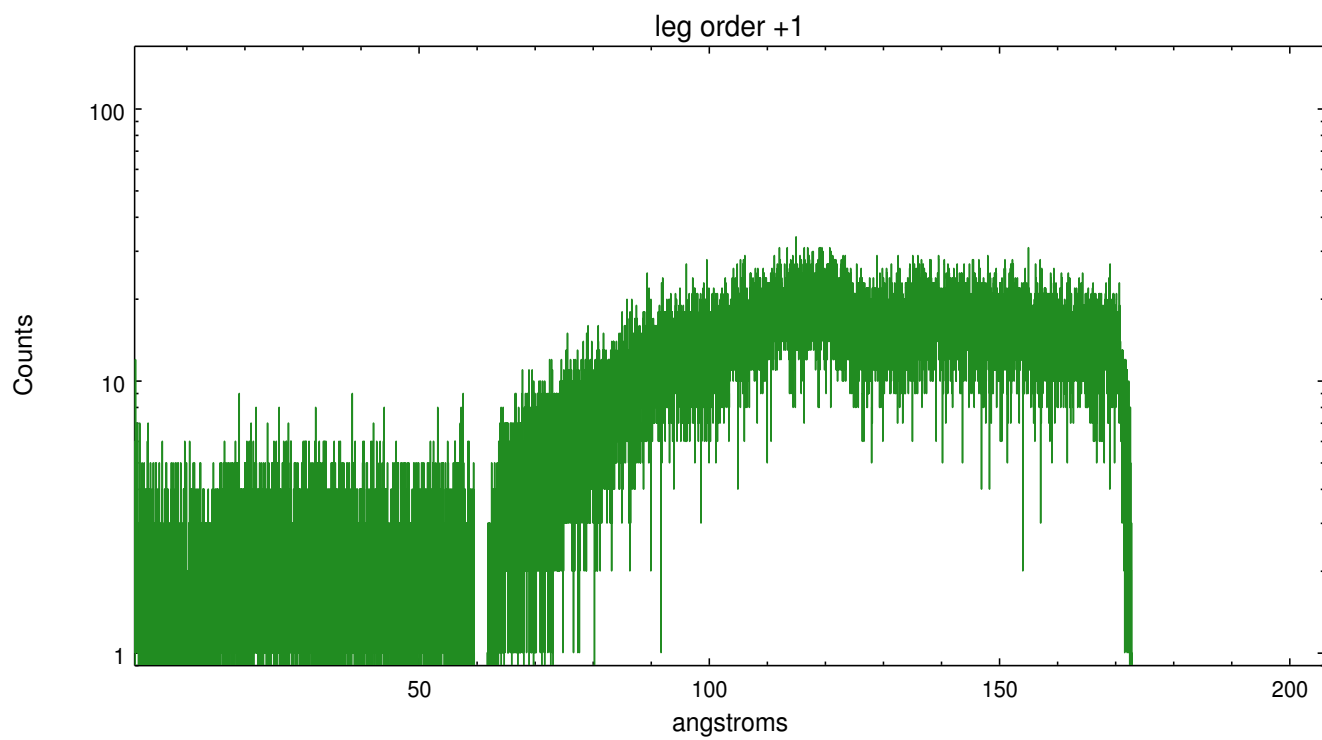
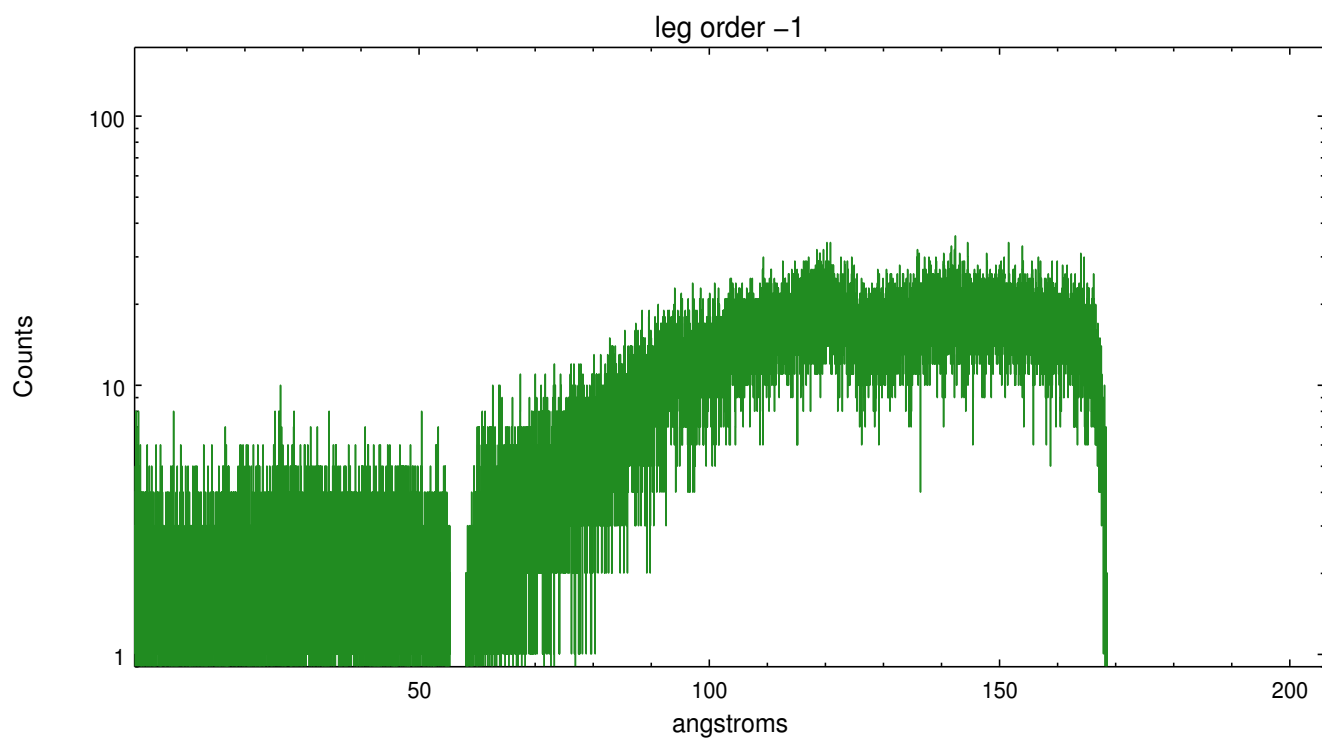


3 Gratings

3.1 LETG Arm



LETG Zero Order



A Summary

A.1 Status

V&V Scientist	Joy Nichols
V&V Date (YYYY-MM-DD)	2013.01.24
V&V Edition	1
V&V Disposition and Status	OK
V&V Charge Time	27.946

A.2 Comments

This is a multi-obi observation taken early in the mission. Obi=0 was observed in 1999 and has no fid light data, therefore no L2 data. Obi=1 was observed in 2000. Fid light data are present and L2 data are produced in obi=1. The current processing is of obi=1 only. Data products from the two obi's are not combined in Level 2, as is standard procedure obi's with similar quality and identical configuration. Only the data from obi=1 have acceptable aspect solutions.