

V&V Reference Report

L2 ASCDS Version : 10.2.4

Observation 14522 - L2 Version 1
Chandra X-Ray Center

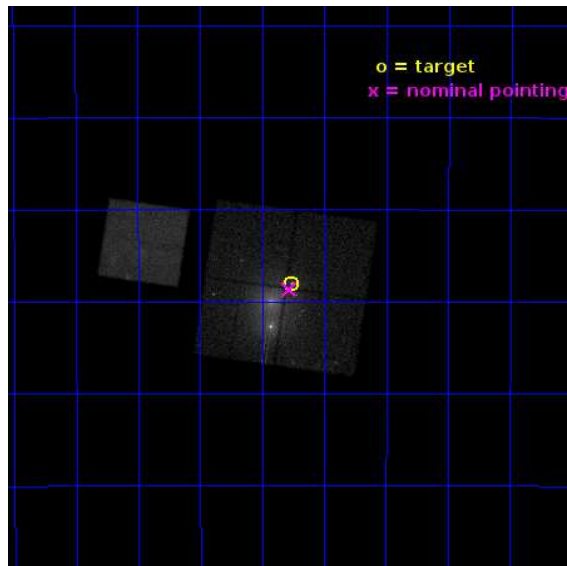
L2 Processing Date : Jul 25 2014

Contents

1	Front	2
2	OBI	3
2.1	OBI	3
2.1.1	Images	3
2.1.2	Bias	3
2.1.3	Parameters	4
2.1.4	Events	4
2.2	Compared Parameters	5
2.3	Aspect	6
2.4	Star Slots	9
2.4.1	Slot 3	9
2.4.2	Slot 4	10
2.4.3	Slot 5	11
2.4.4	Slot 6	12
2.4.5	Slot 7	13
2.5	FID Slots	14
2.5.1	Slot 0	14
2.5.2	Slot 1	15
2.5.3	Slot 2	16
A	Summary	17
A.1	Status	17
A.2	Comments	17

1 Front

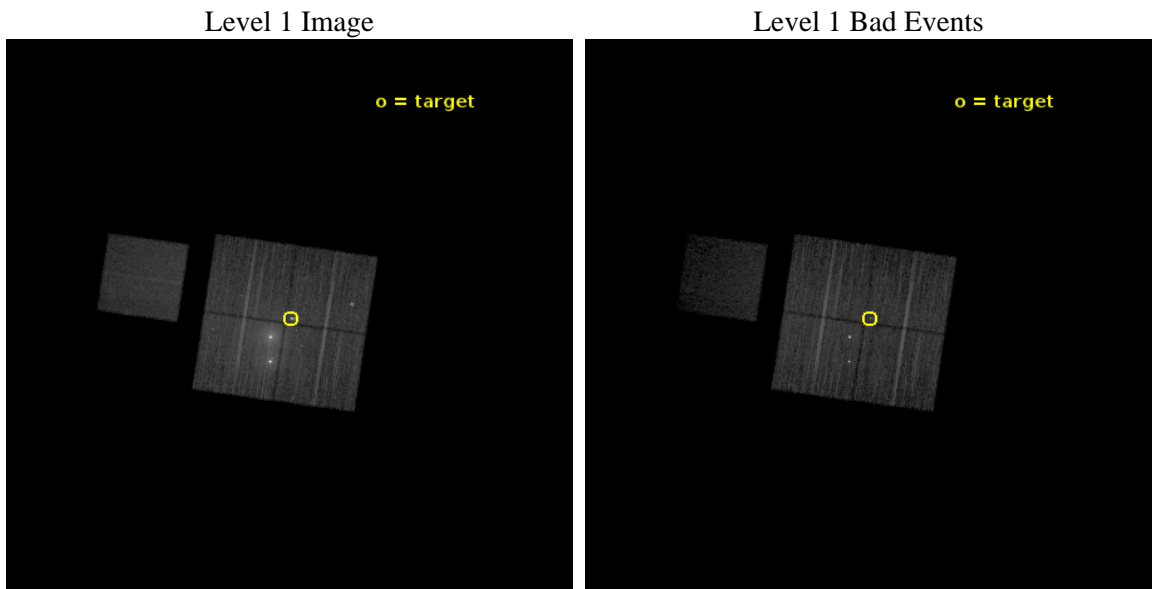
seq_num	501807	Sequence number
obs_id	14522	Observation id
title	A comparative study of two outstanding pulsar tails	Proposal title
observer	Prof Oleg Kargaltsev	Principal investigator
object	The Mouse	Source name
dtycycle	0	
cycle	P	events from which exps? Prim/Second/Both
ra_targ	266.81625	Observer's specified target RA [deg]
dec_targ	-29.967222	Observer's specified target Dec [deg]
ra_nom	266.81995235247	Nominal RA [deg]
dec_nom	-29.97802118444	Nominal Dec [deg]
roll_nom	278.3284040146	Nominal Roll [deg]
revision	1	Processing version of data
ontime	30110.300231576	Sum of GTIs [s]
livetime	29716.88699217	Livetime [s]
ontime0	30107.159191489	Sum of GTIs [s]
ontime1	30110.300231576	Sum of GTIs [s]
ontime2	30100.877270103	Sum of GTIs [s]
ontime3	30100.877160668	Sum of GTIs [s]
ontime7	30110.300231576	Sum of GTIs [s]
l2events	224862	Number of level 2 events



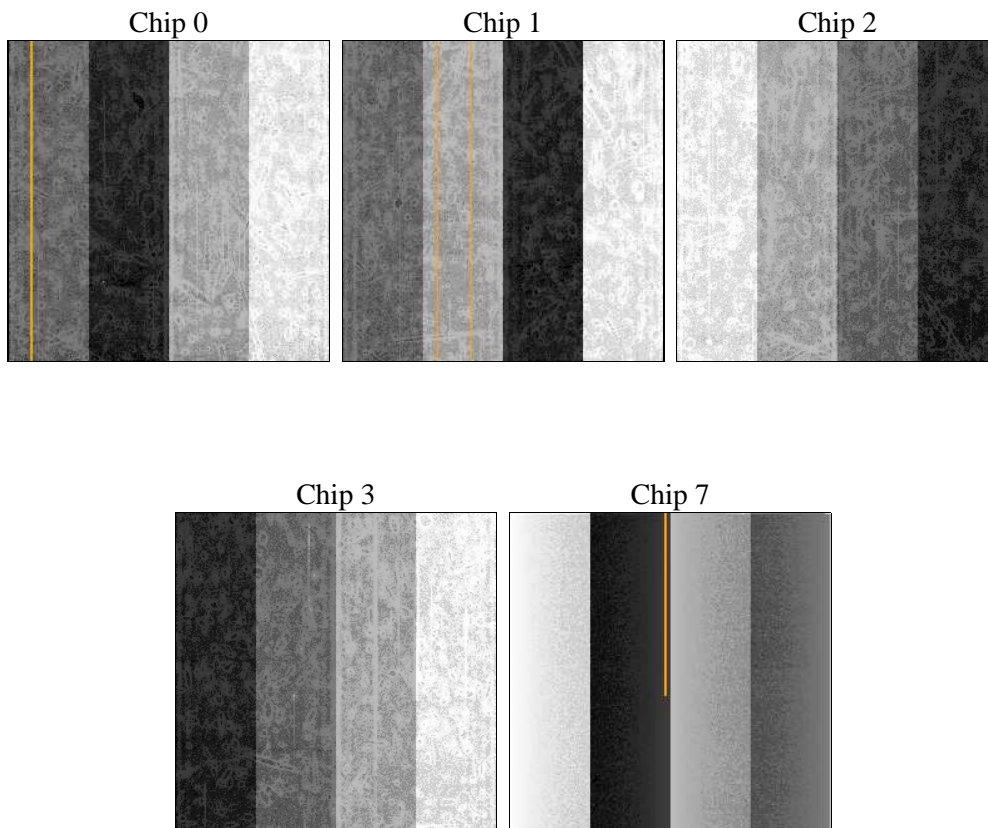
2 OBI

2.1 OBI

2.1.1 Images



2.1.2 Bias



2.1.3 Parameters

obi_num	0	Obi number	sched_exp_time	30000.000000	[s] Scheduled observation exposure time
ascdsver	10.2.4	Processing system revision	ontime	30110.300231576	Sum of GTIs [s]
caldbver	4.6.2	 	ontime0	30107.159191489	Sum of GTIs [s]
date	2014-07-25T23:59:39	Date and time of file creation	ontime1	30110.300231576	Sum of GTIs [s]
revision	1	Processing version of data	ontime2	30100.877270103	Sum of GTIs [s]
			ontime3	30100.877160668	Sum of GTIs [s]
			ontime7	30110.300231576	Sum of GTIs [s]
			l1events	691684	Number of level 1 events

2.1.4 Events

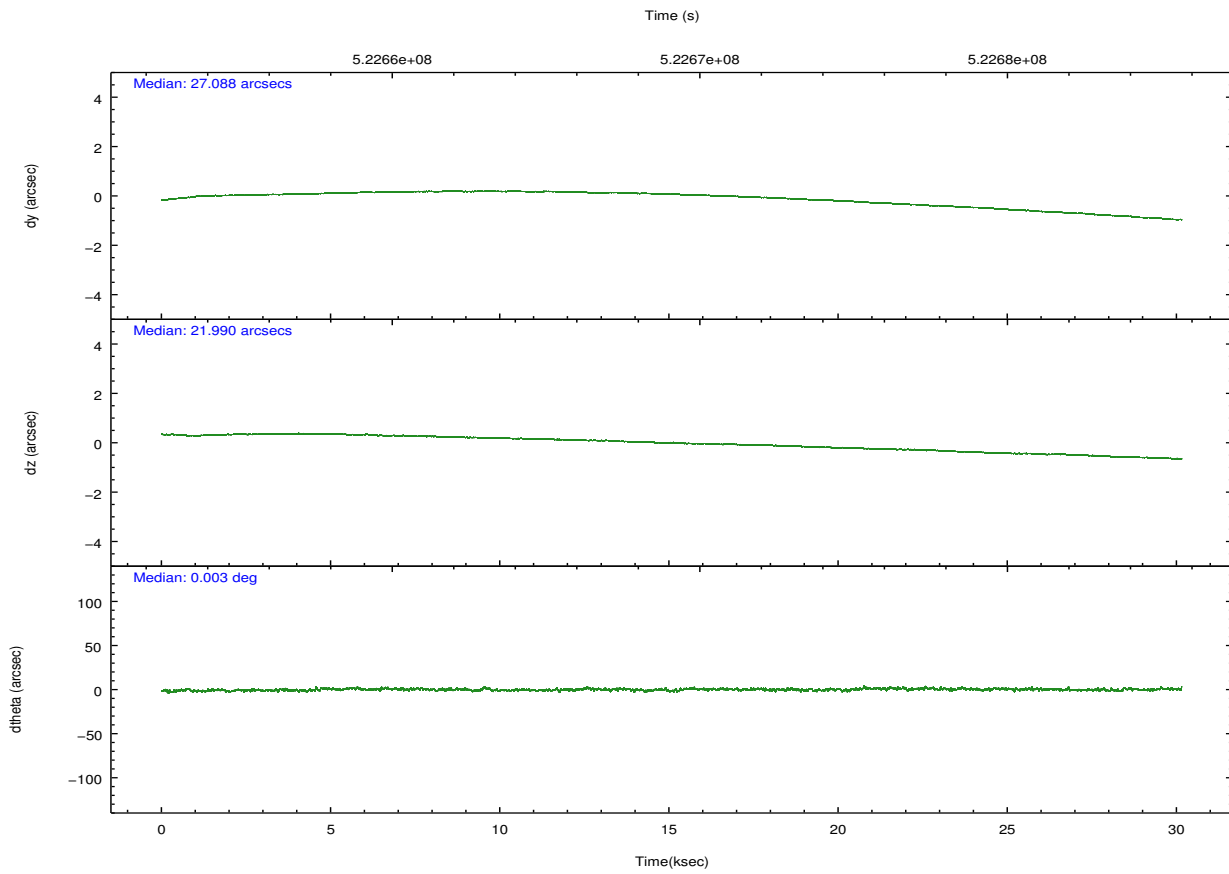
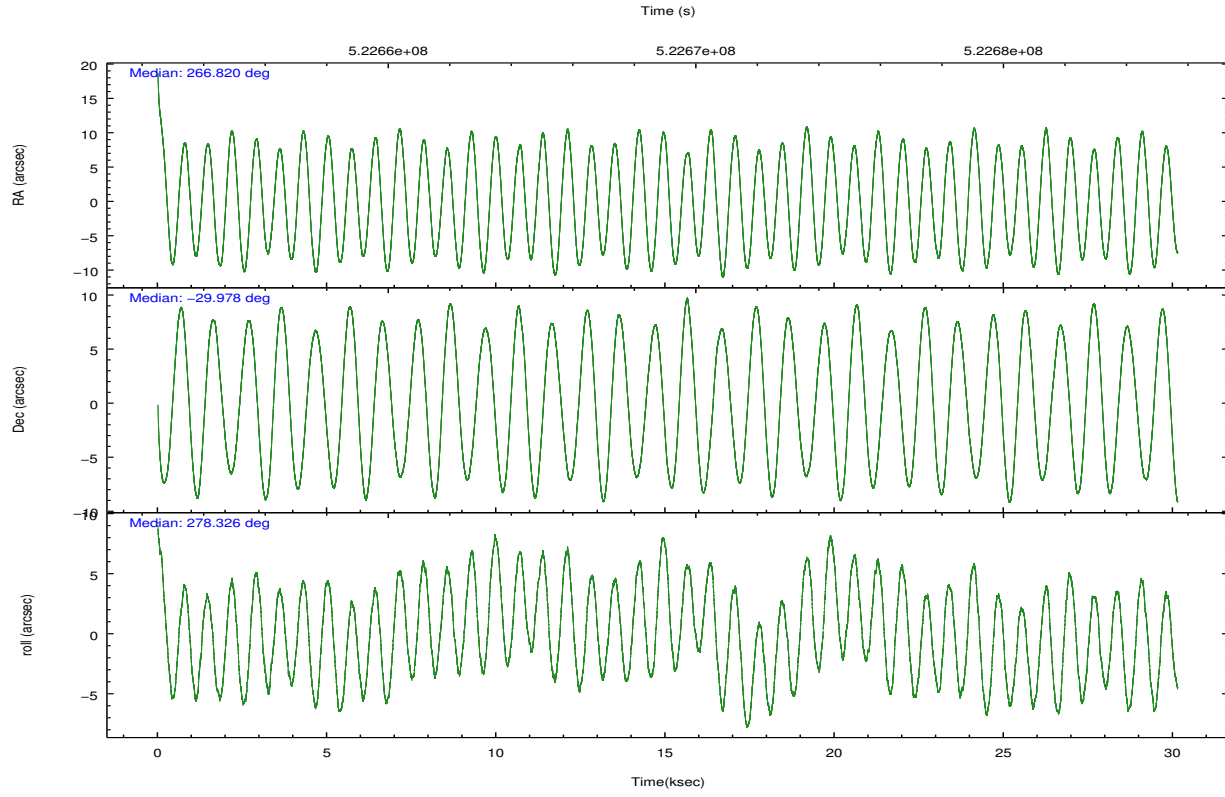
	ccd 0	ccd 1	ccd 2	ccd 3	ccd 7
level 1 events	121656	120186	237276	117392	95174
rejected events	92214	90785	122839	95855	40672
rejected %	75%	75%	51%	81%	42%

	ccd 0	ccd 1	ccd 2	ccd 3	ccd 7
grade 0 events	17796	17177	72619	12128	7276
	14%	14%	30%	10%	7%
grade 1 events	121	199	5375	76	220
	0%	0%	2%	0%	0%
grade 2 events	5242	5090	18160	3861	13251
	4%	4%	7%	3%	13%
grade 3 events	1882	1951	6759	1659	5259
	1%	1%	2%	1%	5%
grade 4 events	1805	2012	6594	1514	5138
	1%	1%	2%	1%	5%
grade 5 events	2952	3305	7116	3457	9481
	2%	2%	2%	2%	9%
grade 6 events	2725	3177	10318	2378	23584
	2%	2%	4%	2%	24%
grade 7 events	89133	87275	110335	92319	30965
	73%	72%	46%	78%	32%

2.2 Compared Parameters

Parameter	Planned	Actual	Parameter	Planned	Actual
Instrument	ACIS	ACIS	Obspar format version number	7	7
Detector	ACIS-01237	ACIS-01237	Obspar file type	PREDICTED	ACTUAL
Grating	NONE	NONE	Obspar update status	NONE	UPDATED
Data mode	VFAINT	VFAINT	CCD I0 on	Y	Y
Observation mode	POINTING	POINTING	CCD I1 on	Y	Y
[deg] Pointing RA	266.800094	266.8199523524737	CCD I2 on	Y	Y
[deg] Pointing Dec	-29.956422	-29.97802118443963	CCD I3 on	Y	Y
[deg] Pointing Roll	278.109797	278.3284040146041	CCD S0 on	N	N
[mm] SIM focus pos	-0.782348	-0.7809083437167272	CCD S1 on	N	N
[mm] SIM defocus	0	0.001439871863259334	CCD S2 on	N	N
[mm] SIM translation stage pos	-237.394963	-237.3890791967874	CCD S3 on	O1	Y
[mm] SIM translation stage offset	3.8025	3.796626193857719	CCD S4 on	N	N
[s] Observation start time (MET)	522654171.184000	522652968.2346	CCD S5 on	N	N
Observation start date	2014-07-25T05:41:44	2014-07-25T05:22:48	Number of optional ACIS chips dropped	0	0
[s] Observation end time (MET)	522684171.184000	522684551.04885	On-chip summing requested	N	N
Observation end date	2014-07-25T14:01:44	2014-07-25T14:09:11	Subarray requested	NONE	NONE
Read mode	TIMED	TIMED	Alternating exposures requested	N	N
			[s] Primary exposure time	0.000000	3.1

2.3 Aspect

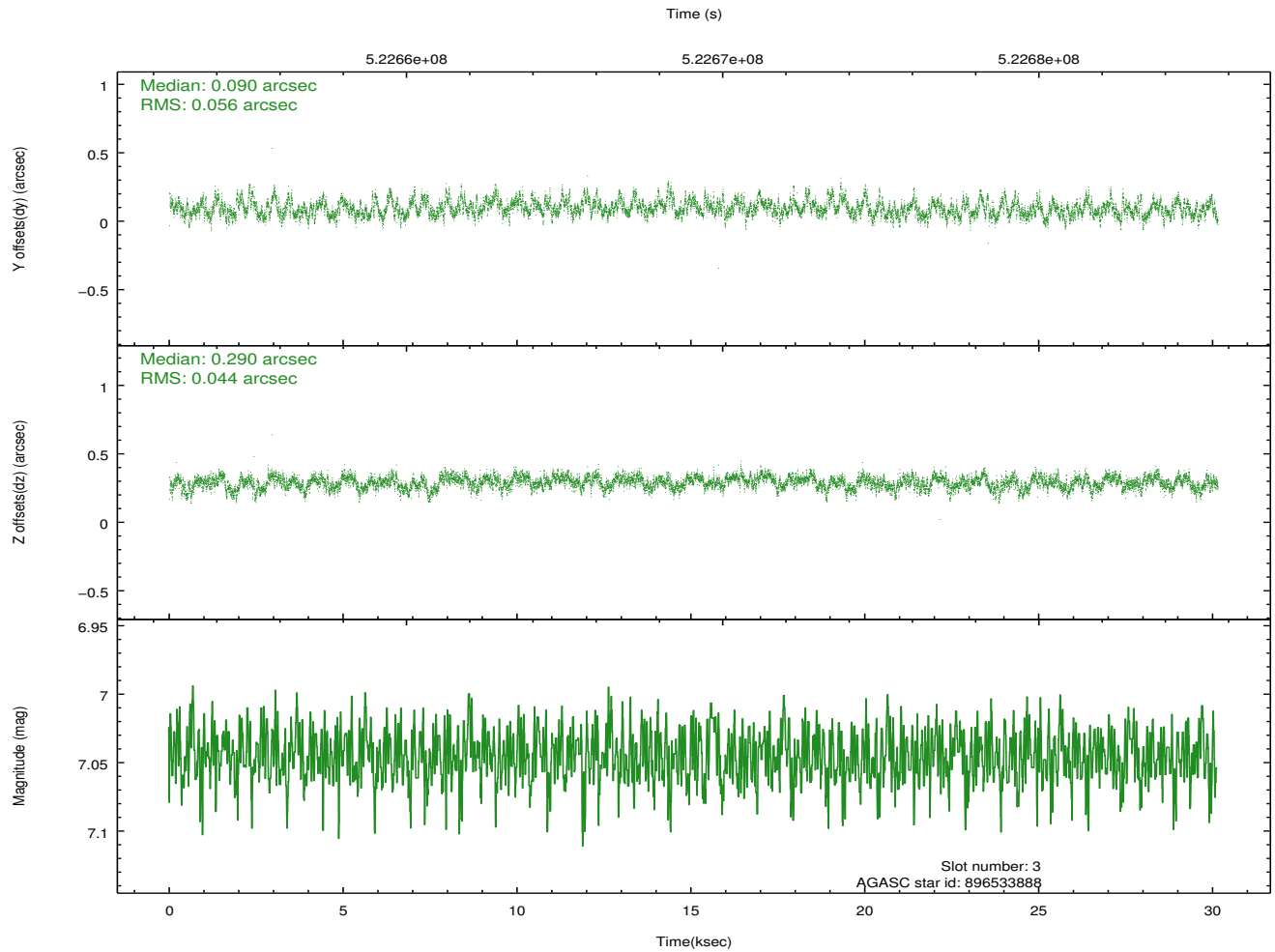
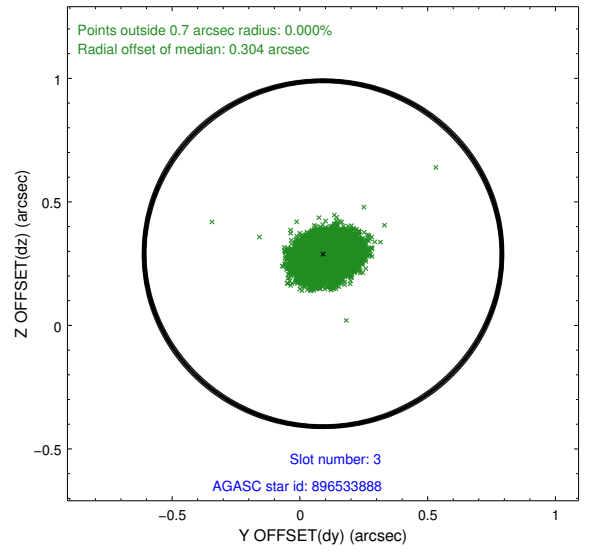
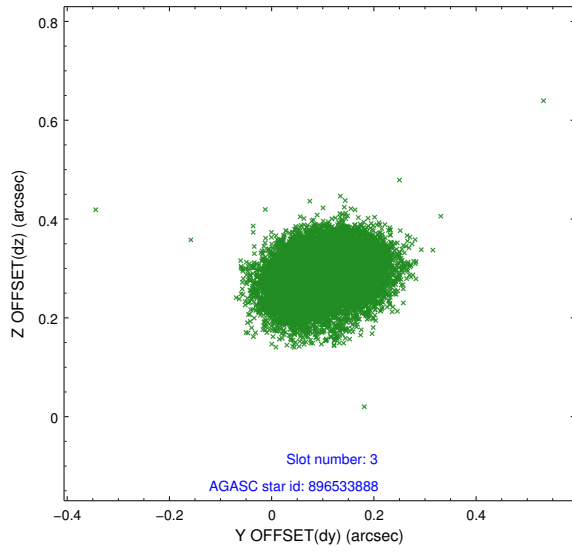


Slot Statistics

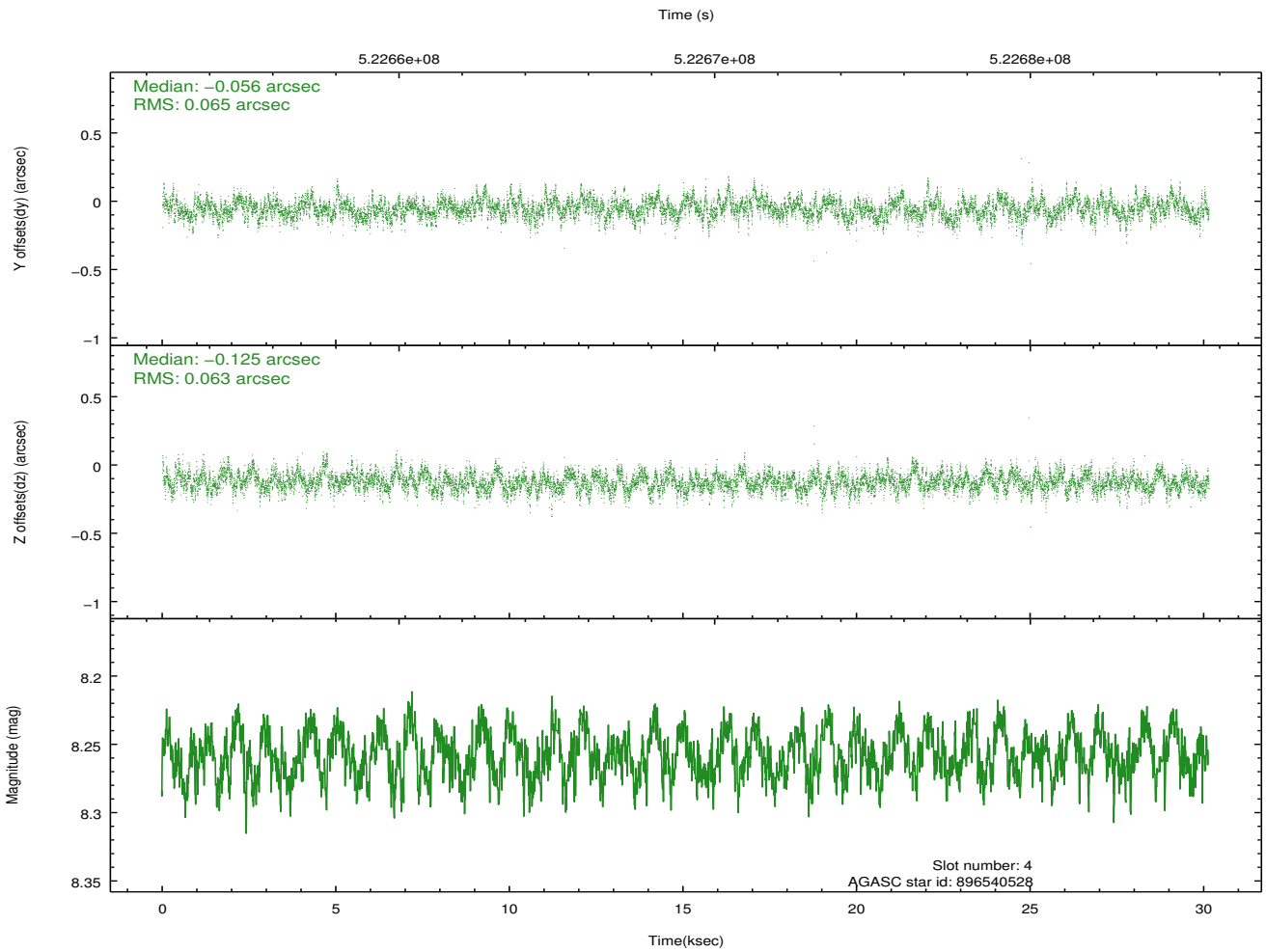
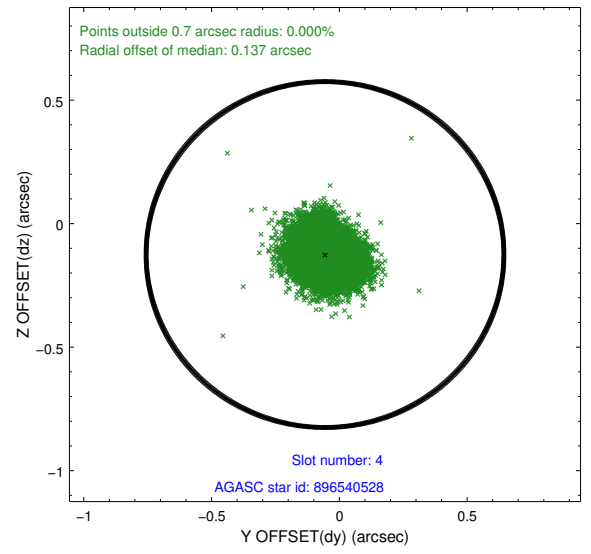
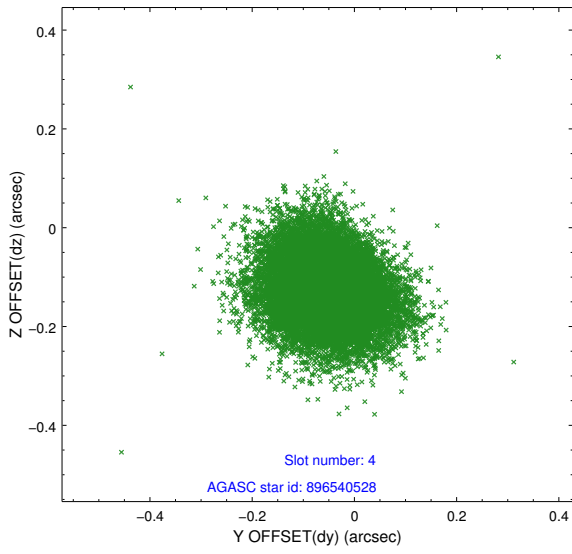
slot	status	id	mag	n_pts	med_dy	med_dz	dr1	dr2	ra	dec	mean_y	mean_z
0	FID	ACIS-I-1	7.11	7352	-0.058	0.177	0.013	0.020	0.000000	0.000000	912.13	-767.52
1	FID	ACIS-I-2	7.01	7352	-0.248	-0.202	0.012	0.020	0.000000	0.000000	-781.90	-774.74
2	FID	ACIS-I-4	7.09	7351	0.208	0.092	0.008	0.015	0.000000	0.000000	2132.62	1131.59
3	GUIDE	896533888	7.05	14703	0.090	0.290	0.075	0.125	266.666434	-29.392757	-2067.58	-128.45
4	GUIDE	896540528	8.26	14693	-0.056	-0.125	0.095	0.157	267.368305	-29.314773	-2030.78	2091.67
5	GUIDE	896541168	8.15	14699	0.327	0.121	0.080	0.134	266.319970	-29.850801	-584.30	-1430.79
6	GUIDE	966920512	8.38	14696	-0.245	-0.159	0.104	0.158	267.231170	-30.494681	2109.32	1050.16
7	GUIDE	966920552	8.87	14702	-0.125	-0.119	0.089	0.146	267.271588	-30.476409	2062.72	1183.97

2.4 Star Slots

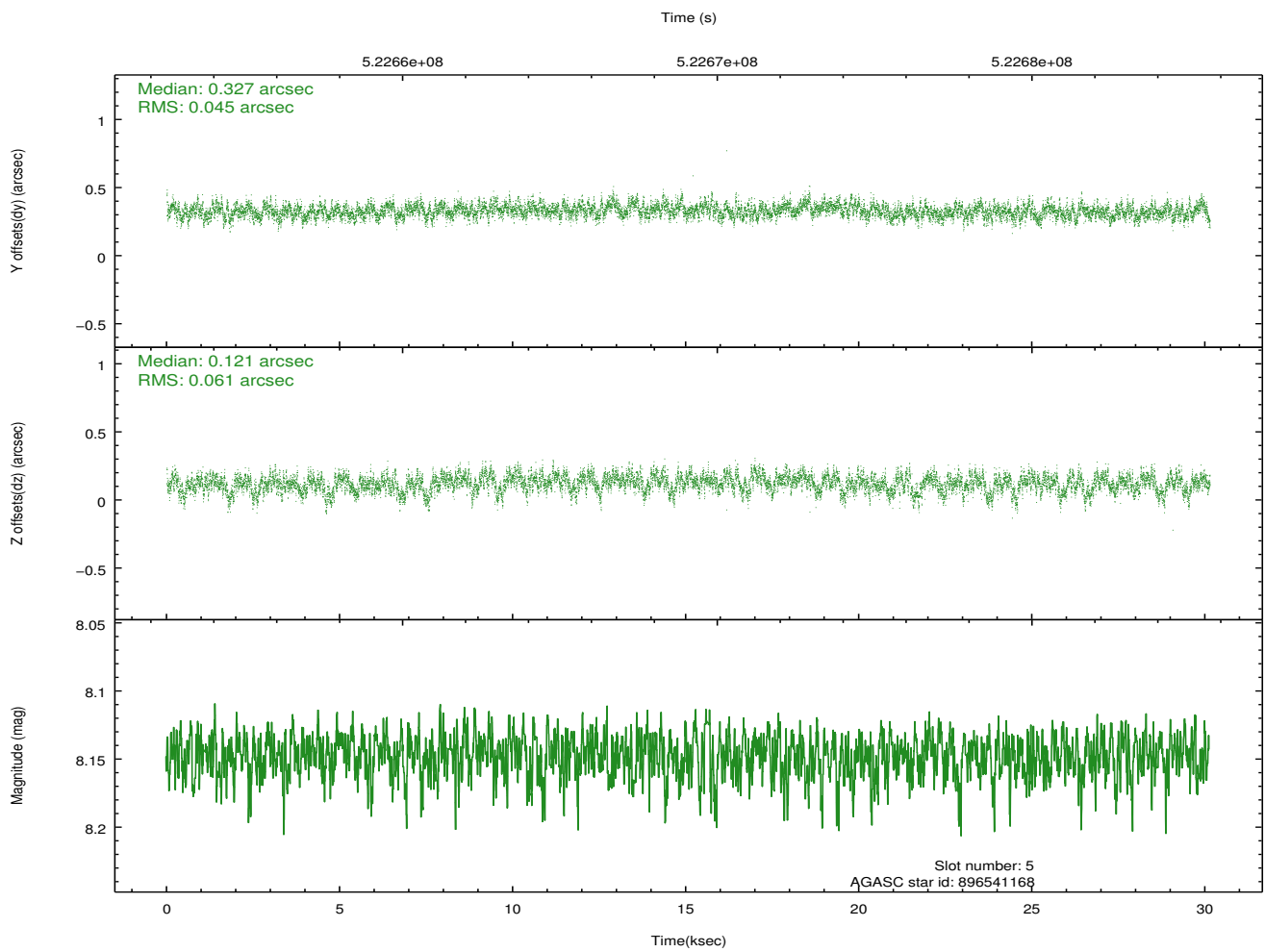
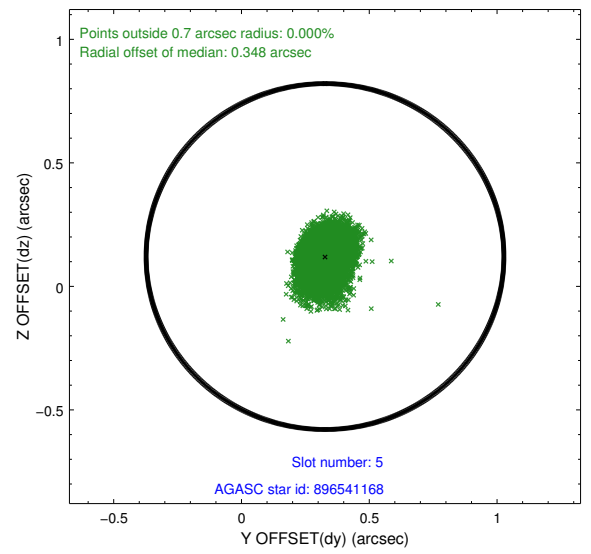
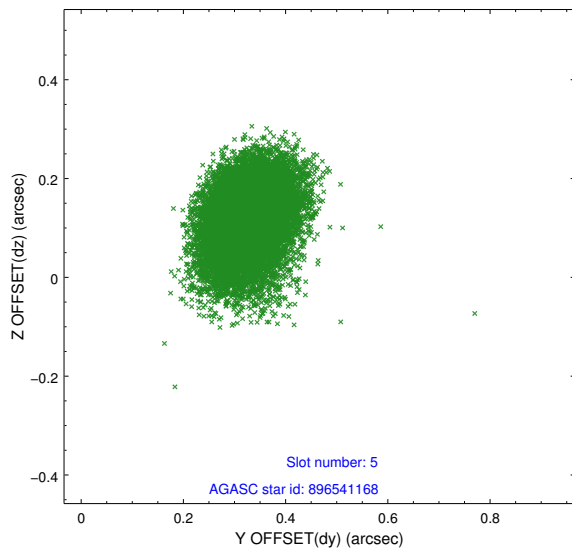
2.4.1 Slot 3



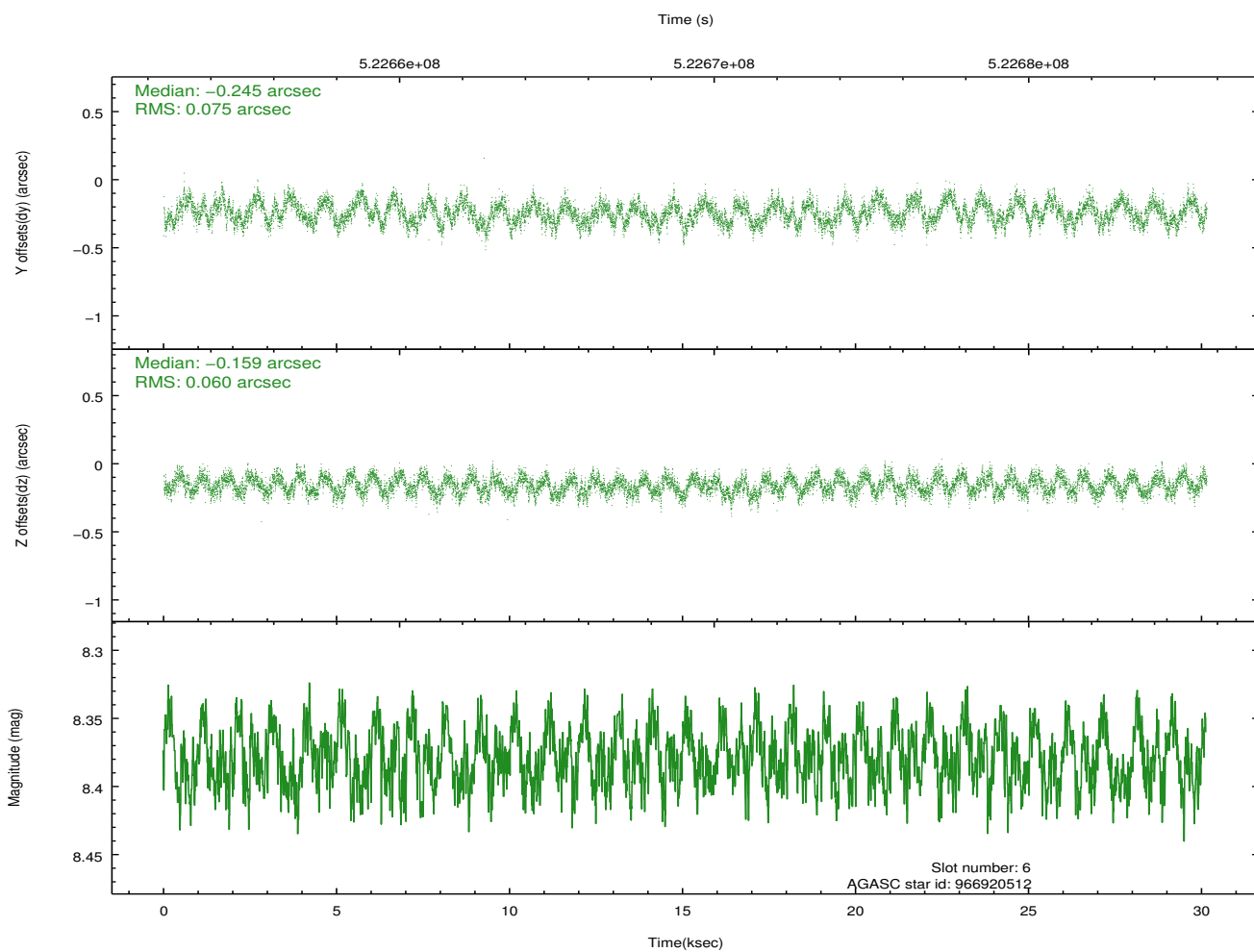
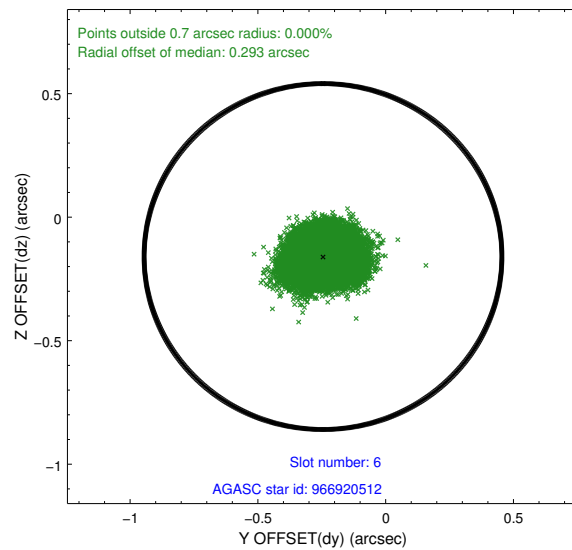
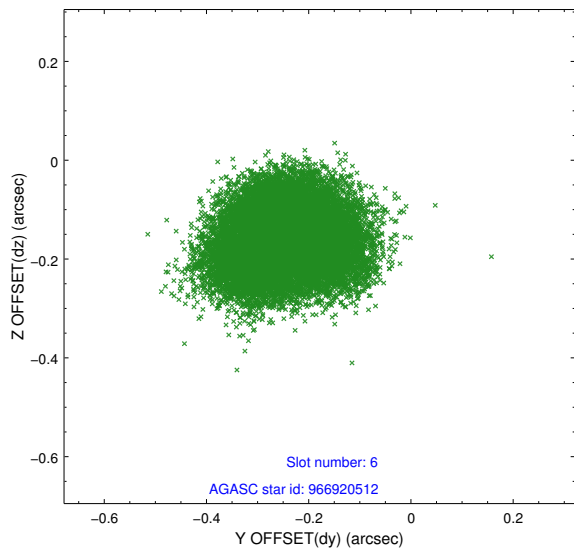
2.4.2 Slot 4



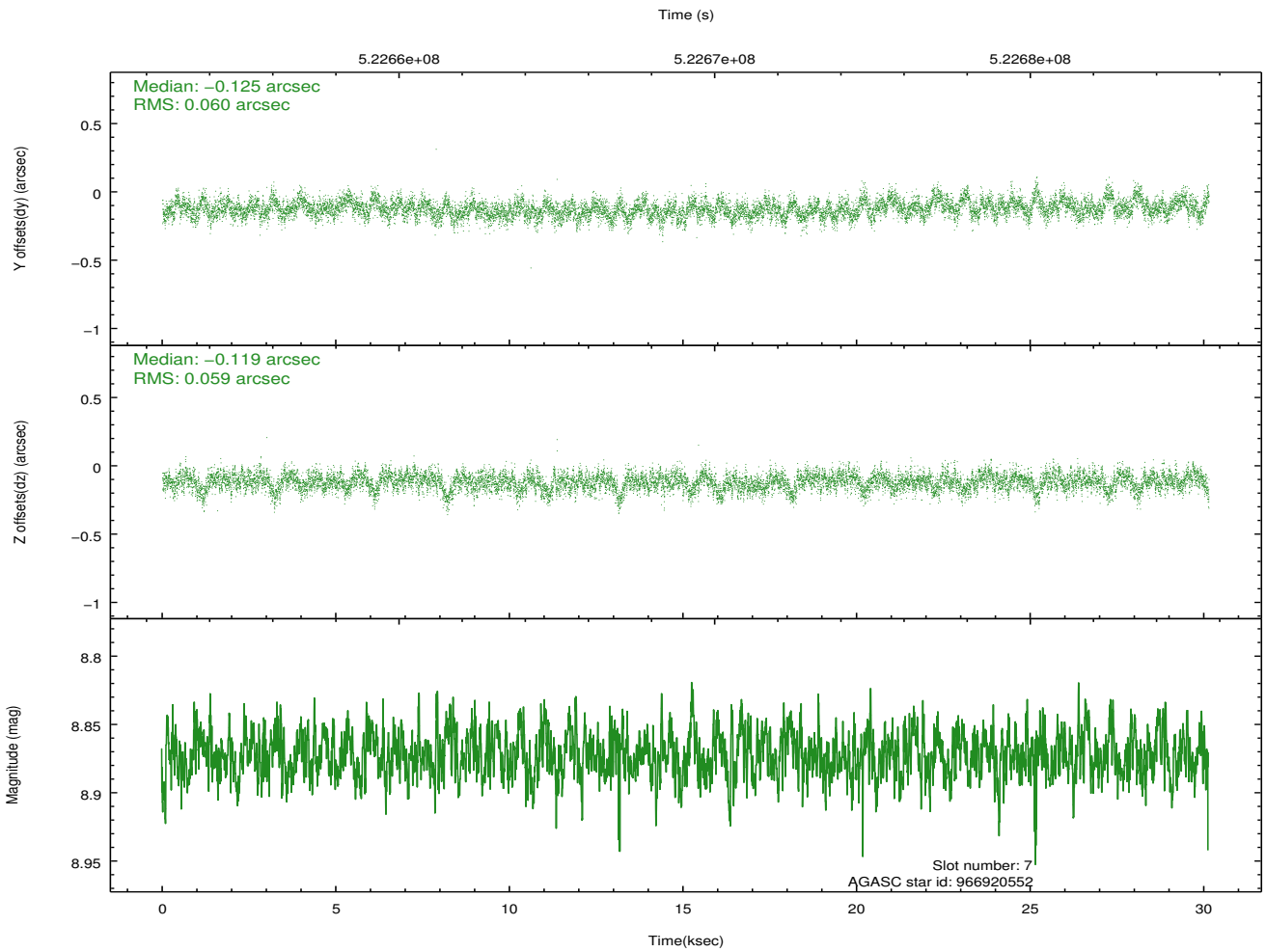
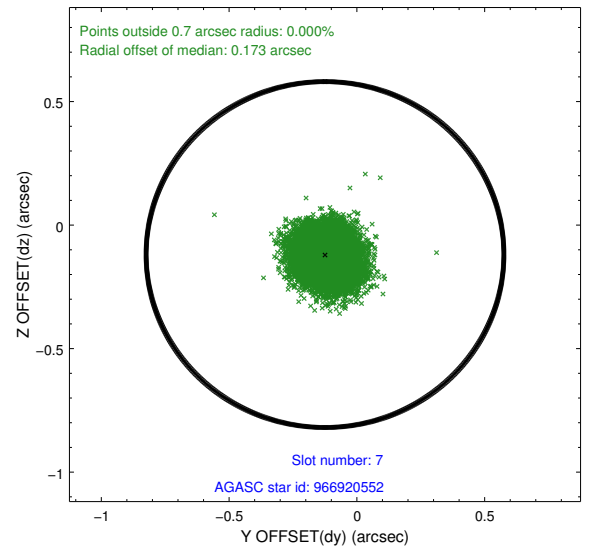
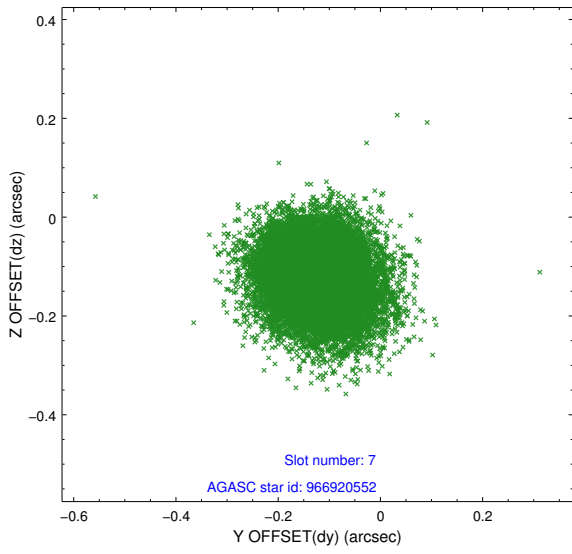
2.4.3 Slot 5



2.4.4 Slot 6

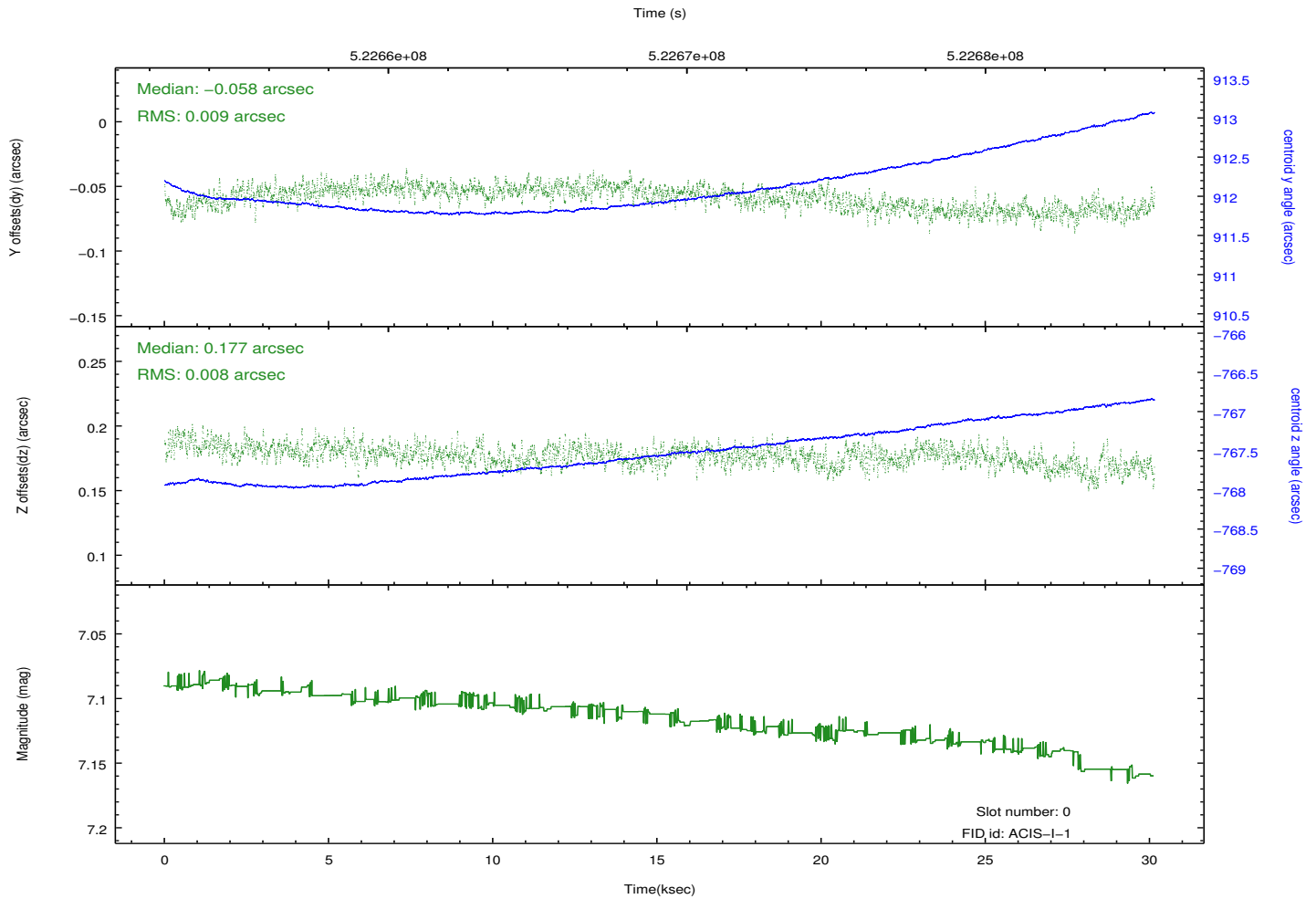
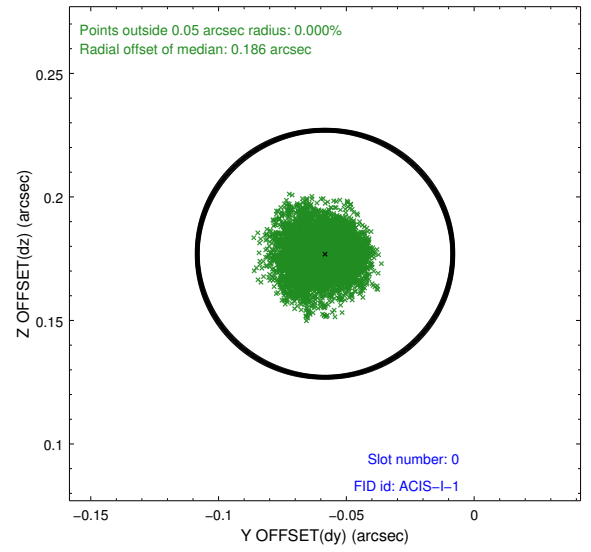
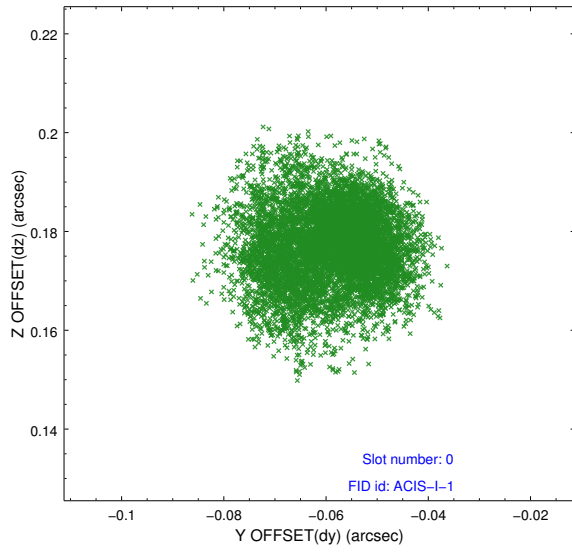


2.4.5 Slot 7

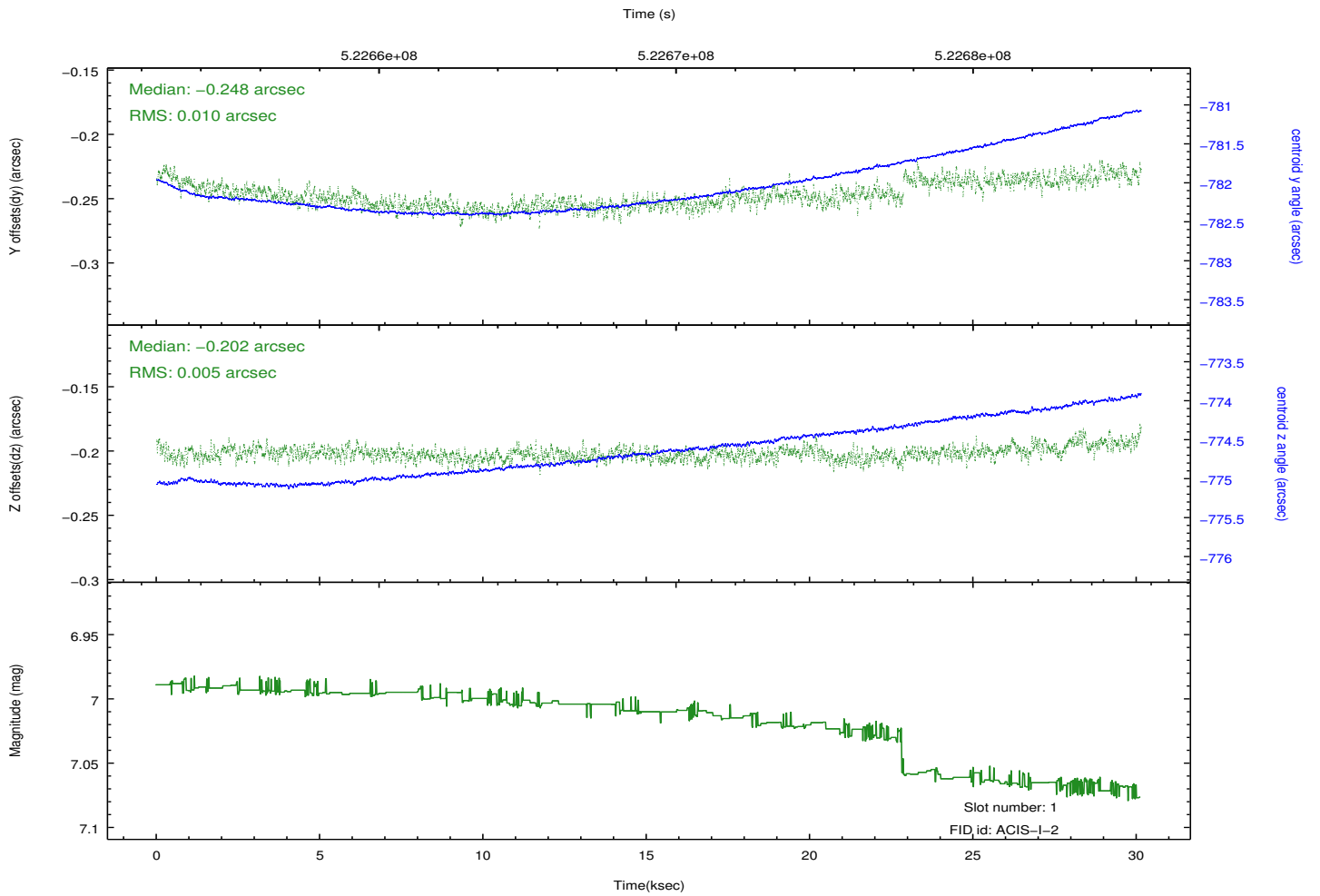
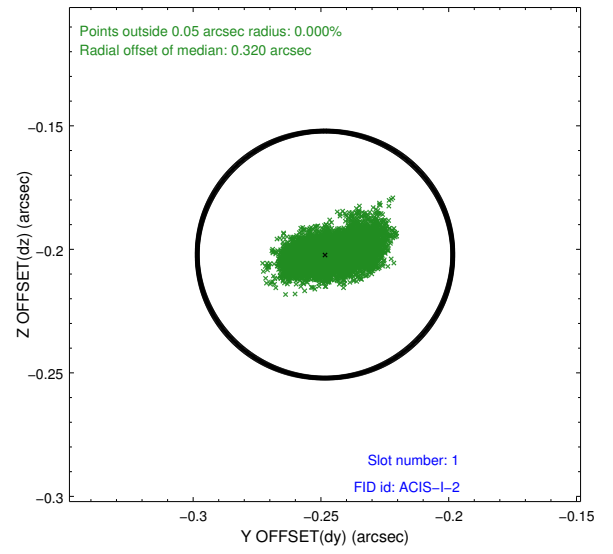
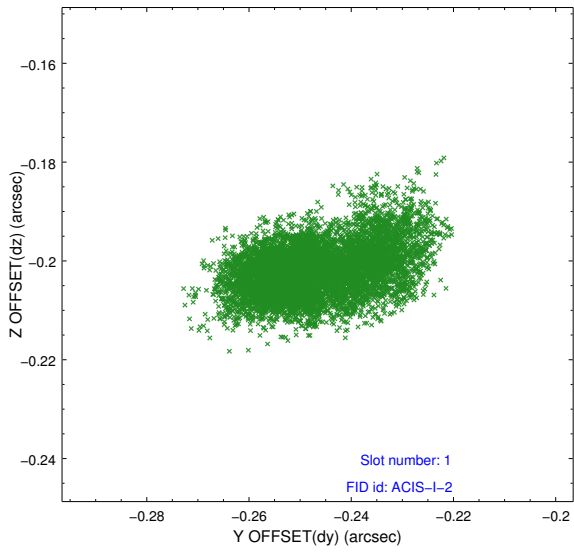


2.5 FID Slots

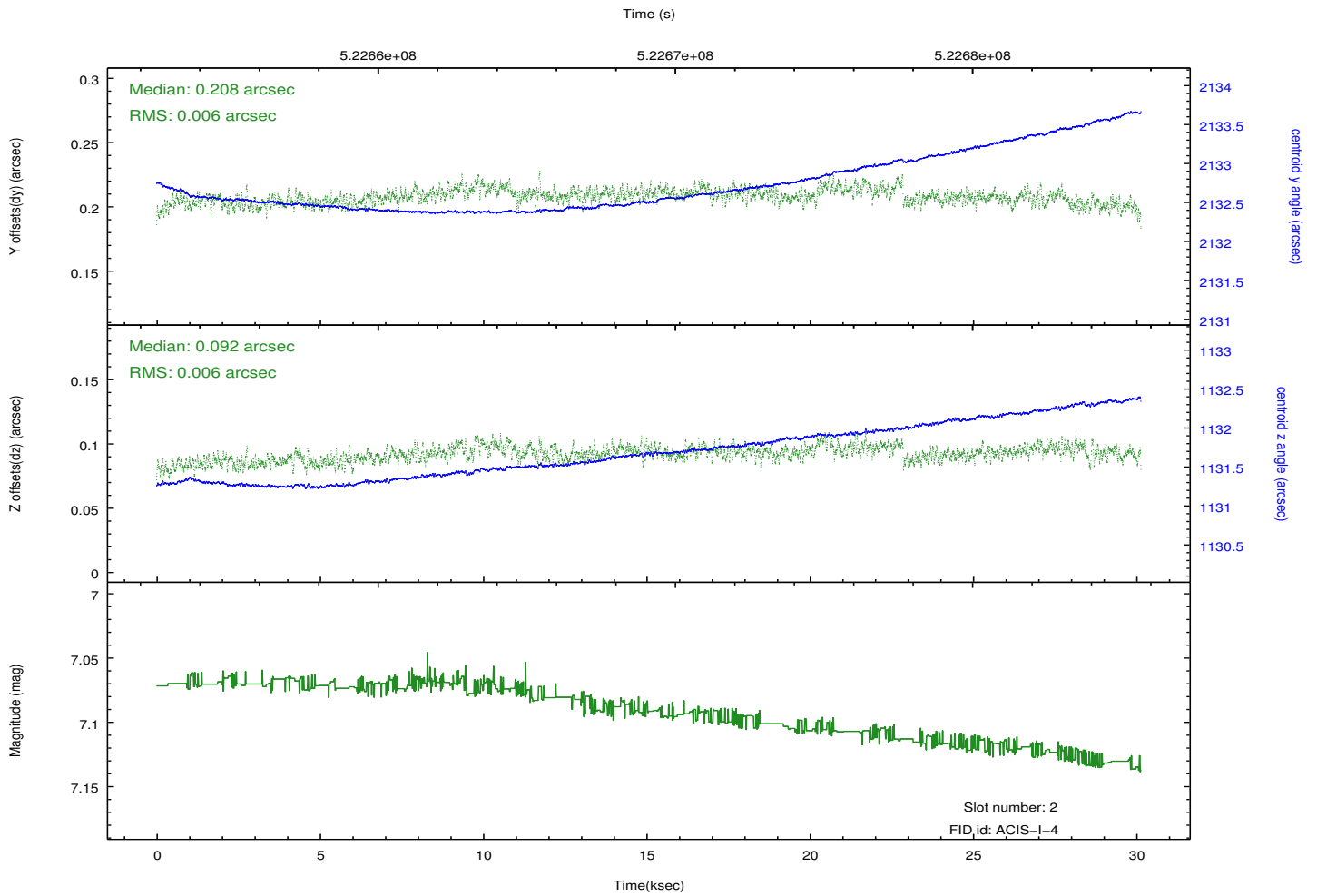
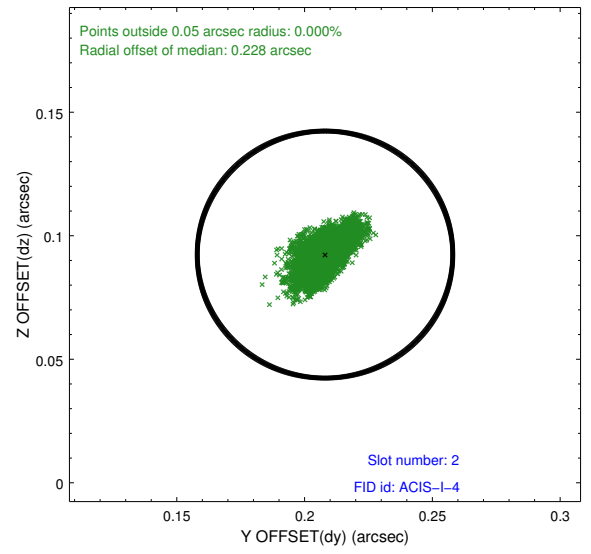
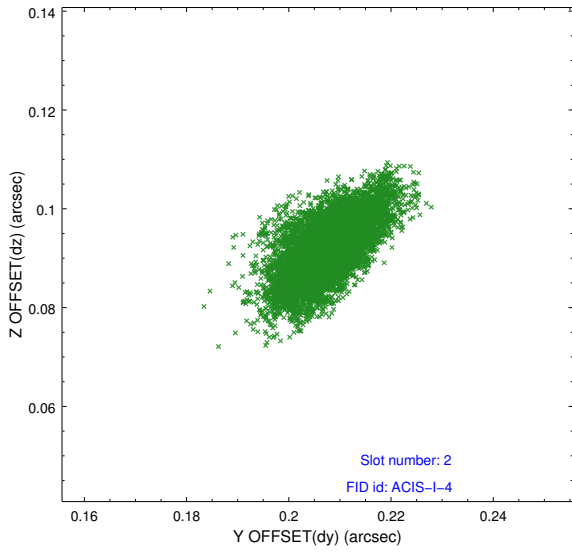
2.5.1 Slot 0



2.5.2 Slot 1



2.5.3 Slot 2



A Summary

A.1 Status

V&V Scientist	Joy Nichols
V&V Date (YYYY-MM-DD)	2014.07.28
V&V Edition	1
V&V Disposition and Status	OK
V&V Charge Time	30.110300231576

A.2 Comments