

V&V Reference Report

L2 ASCDS Version : 8.5.1.1

Observation 14672 - L2 Version 2
Chandra X-Ray Center

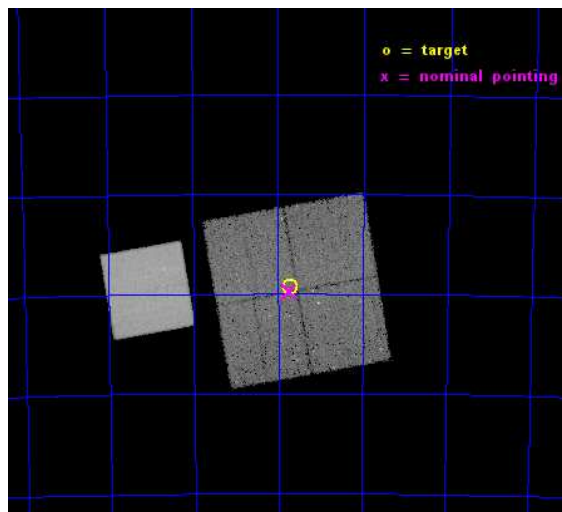
L2 Processing Date : Nov 30 2014

Contents

1	Front	2
2	OBI	3
2.1	OBI	3
2.1.1	Images	3
2.1.2	Bias	3
2.1.3	Parameters	4
2.1.4	Events	4
2.2	Compared Parameters	5
2.3	Aspect	6
2.4	Star Slots	9
2.4.1	Slot 3	9
2.4.2	Slot 4	10
2.4.3	Slot 5	11
2.4.4	Slot 6	12
2.4.5	Slot 7	13
2.5	FID Slots	14
2.5.1	Slot 0	14
2.5.2	Slot 1	15
2.5.3	Slot 2	16
A	Summary	17
A.1	Status	17
A.2	Comments	17

1 Front

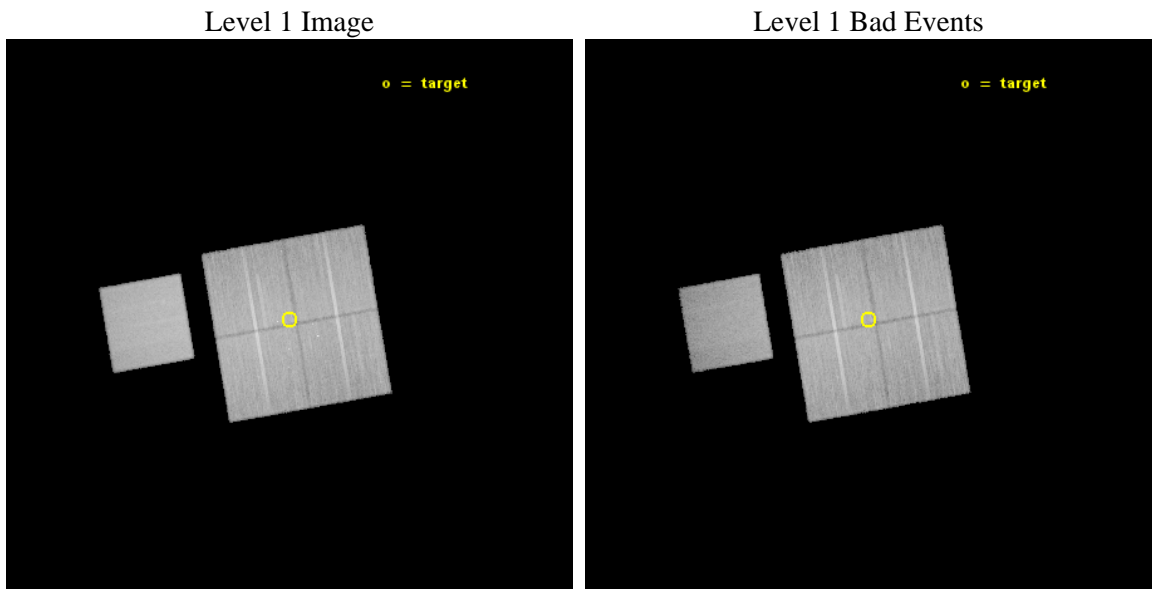
seq_num	401505	Sequence number
obs_id	14672	Observation id
title	The Small Magellanic Cloud - A Case Study of X-ray Populations at Low Metallicity	Proposal title
observer	Dr Andreas Zezas	Principal investigator
object	Deep Field 09	Source name
dtcycle	0	
cycle	P	events from which exps? Prim/Second/Both
ra_targ	12.43	Observer's specified target RA [deg]
dec_targ	-72.821194	Observer's specified target Dec [deg]
ra_nom	12.433479751287	Nominal RA [deg]
dec_nom	-72.829216194151	Nominal Dec [deg]
roll_nom	260.10987955092	Nominal Roll [deg]
revision	2	Processing version of data
ontime	45364.177405477	Sum of GTIs [s]
livetime	44771.461031052	Livetime [s]
ontime0	45364.054285467	Sum of GTIs [s]
ontime1	45360.954335153	Sum of GTIs [s]
ontime2	45367.277335823	Sum of GTIs [s]
ontime3	45364.177405477	Sum of GTIs [s]
ontime7	45367.359415829	Sum of GTIs [s]
l2events	211955	Number of level 2 events



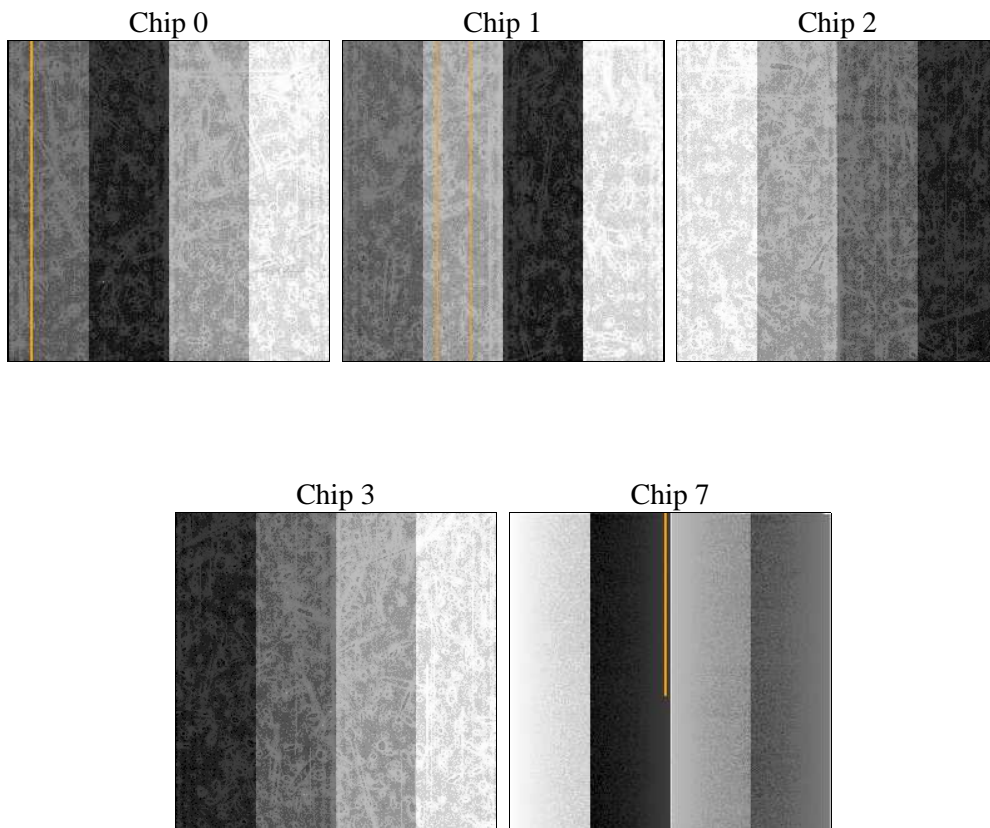
2 OBI

2.1 OBI

2.1.1 Images



2.1.2 Bias



2.1.3 Parameters

obi_num	0	Obi number	sched_exp_time	45300.000000	[s] Scheduled observation exposure time
ascdsver	10.3	Processing system revision	ontime	45364.177405477	Sum of GTIs [s]
caldbver	4.6.4	 	ontime0	45364.054285467	Sum of GTIs [s]
date	2014-12-01T04:01:55	Date and time of file creation	ontime1	45360.954335153	Sum of GTIs [s]
revision	2	Processing version of data	ontime2	45367.277335823	Sum of GTIs [s]
			ontime3	45364.177405477	Sum of GTIs [s]
			ontime7	45367.359415829	Sum of GTIs [s]
			l1events	1156577	Number of level 1 events

2.1.4 Events

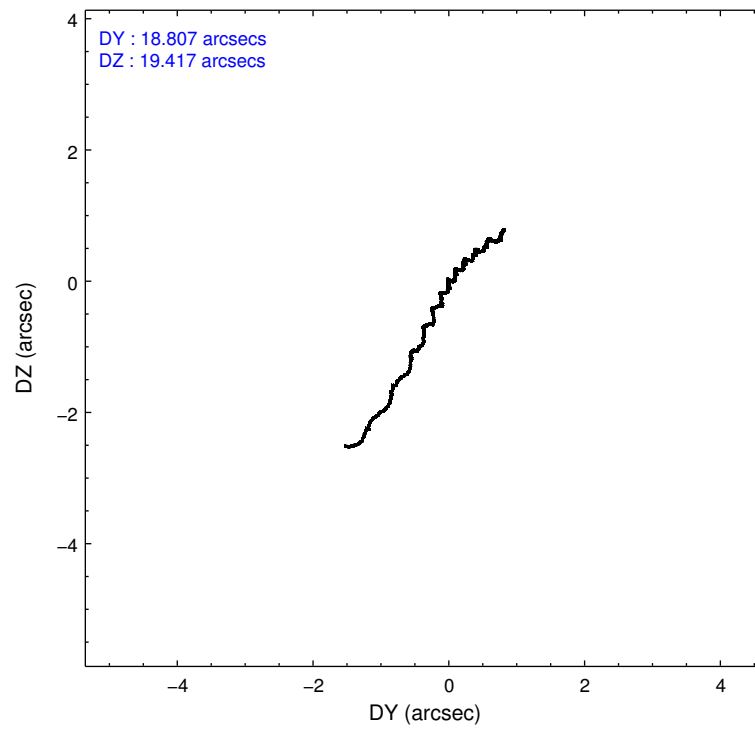
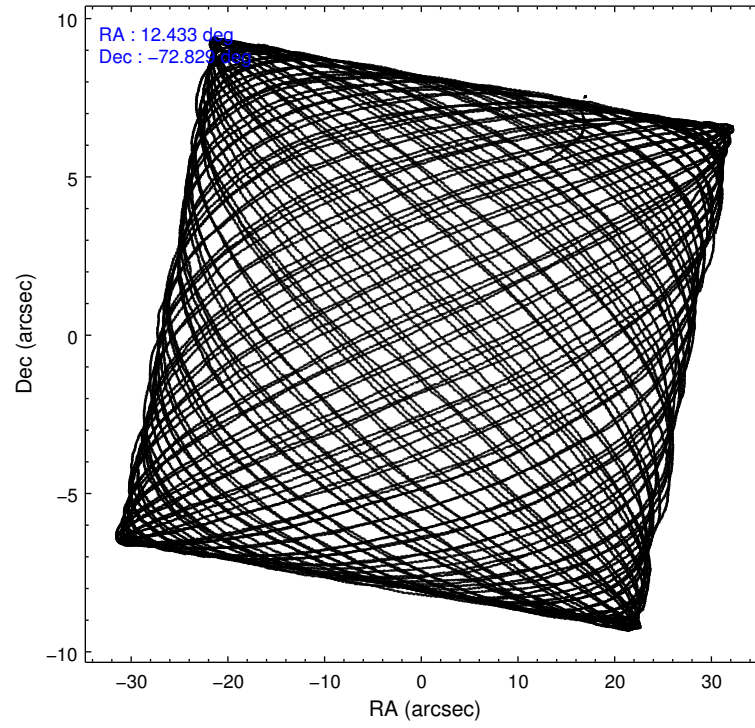
	ccd 0	ccd 1	ccd 2	ccd 3	ccd 7
level 1 events	210924	214227	236443	228205	266778
rejected events	182361	186774	208712	202401	140042
rejected %	86%	87%	88%	88%	52%

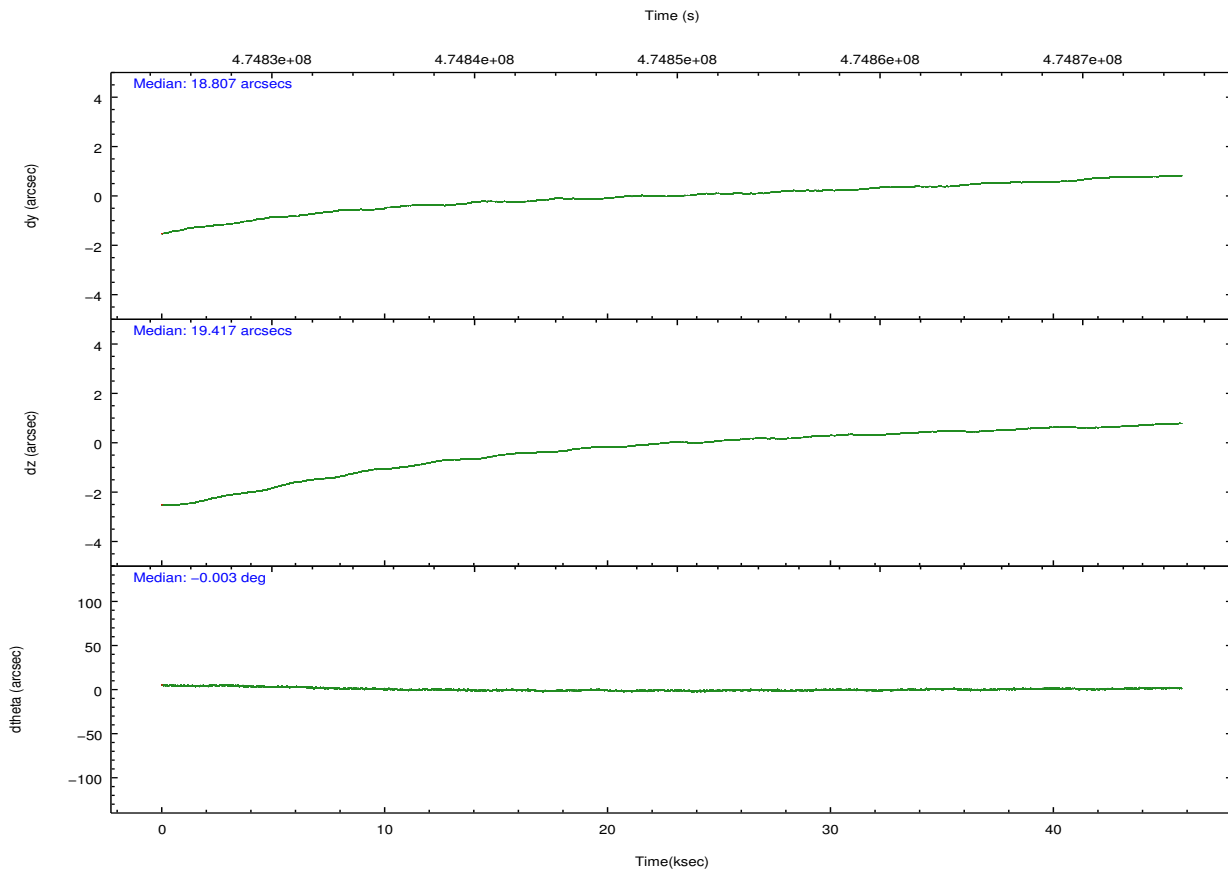
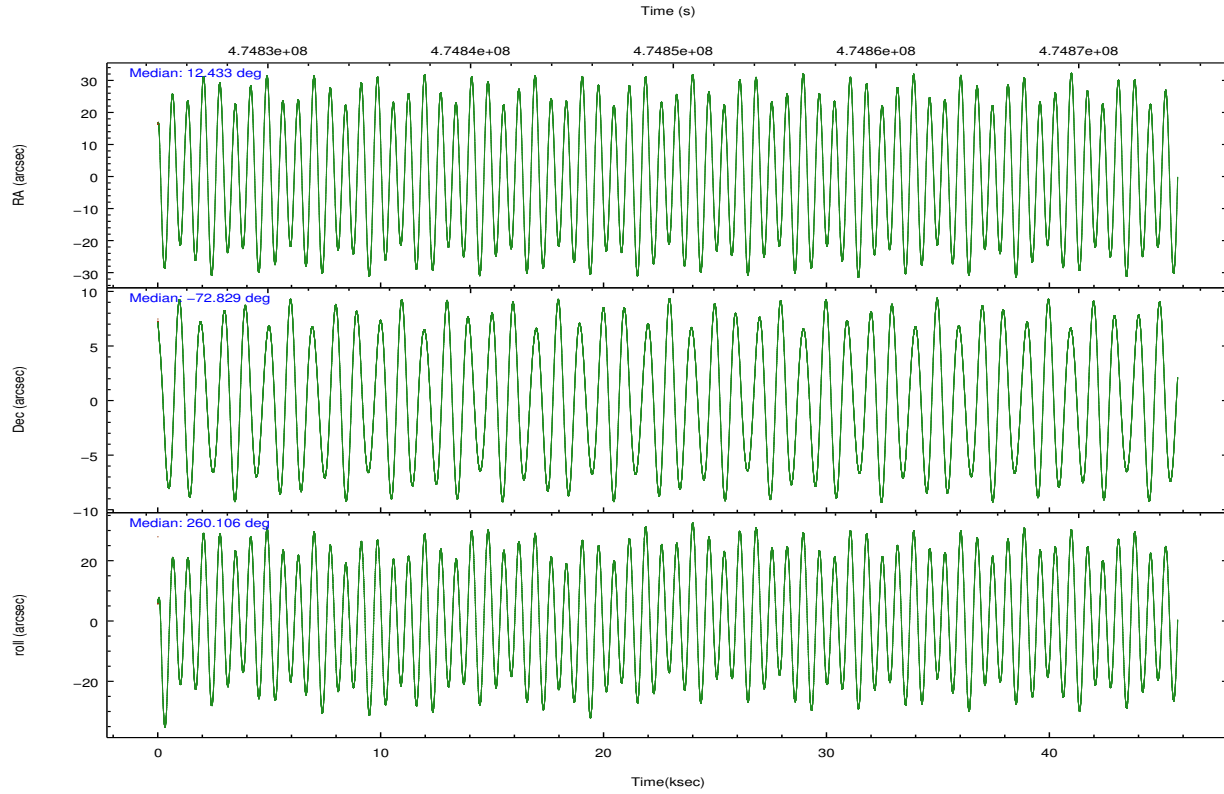
	ccd 0	ccd 1	ccd 2	ccd 3	ccd 7
grade 0 events	10983	9526	10669	9542	12642
	5%	4%	4%	4%	4%
grade 1 events	138	123	173	146	410
	0%	0%	0%	0%	0%
grade 2 events	7188	6614	7013	5814	27445
	3%	3%	2%	2%	10%
grade 3 events	2840	2810	2505	2691	11136
	1%	1%	1%	1%	4%
grade 4 events	2605	2765	2857	2715	10952
	1%	1%	1%	1%	4%
grade 5 events	8660	9485	8158	10277	27774
	4%	4%	3%	4%	10%
grade 6 events	4949	5738	4689	5045	64567
	2%	2%	1%	2%	24%
grade 7 events	173561	177166	200379	191975	111852
	82%	82%	84%	84%	41%

2.2 Compared Parameters

Parameter	Planned	Actual	Parameter	Planned	Actual
Instrument	ACIS	ACIS	Obspar format version number	7	7
Detector	ACIS-01237	ACIS-01237	Obspar file type	PREDICTED	ACTUAL
Grating	NONE	NONE	Obspar update status	NONE	UPDATED
Data mode	VFAINT	VFAINT	Number of optional ACIS chips dropped	0	0
Observation mode	POINTING	POINTING	On-chip summing requested	N	N
[deg] Pointing RA	12.401190	12.43347975128711	Subarray requested	NONE	NONE
[deg] Pointing Dec	-72.803427	-72.8292161941511	Alternating exposures requested	N	N
[deg] Pointing Roll	259.870351	260.1098795509227	[s] Primary exposure time	0.000000	3.1
[mm] SIM focus pos	-0.782348	-0.7809083437167272			
[mm] SIM defocus	0	0.001439871863259334			
[mm] SIM translation stage pos	-233.592463	-233.5874344608287			
[mm] SIM translation stage offset	0	-0.005018542100998502			
[s] Observation start time (MET)	474827304.184000	474826233.96891			
Observation start date	2013-01-17T16:27:17	2013-01-17T16:10:33			
[s] Observation end time (MET)	474872604.184000	474874119.40899			
Observation end date	2013-01-18T05:02:17	2013-01-18T05:28:39			
Read mode	TIMED	TIMED			

2.3 Aspect





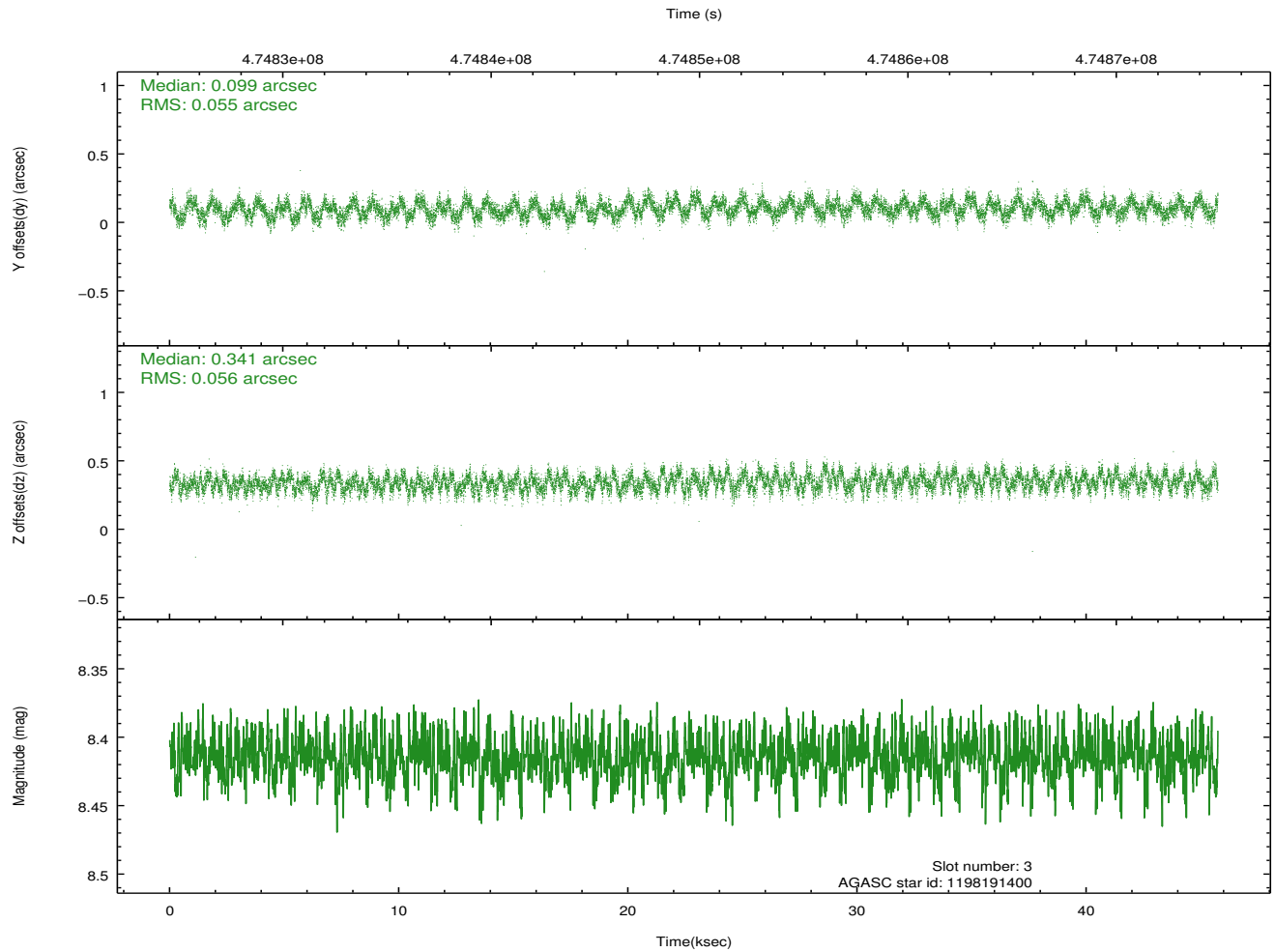
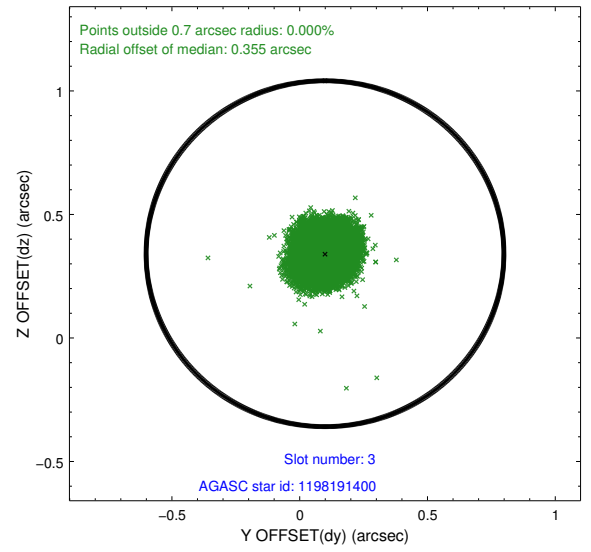
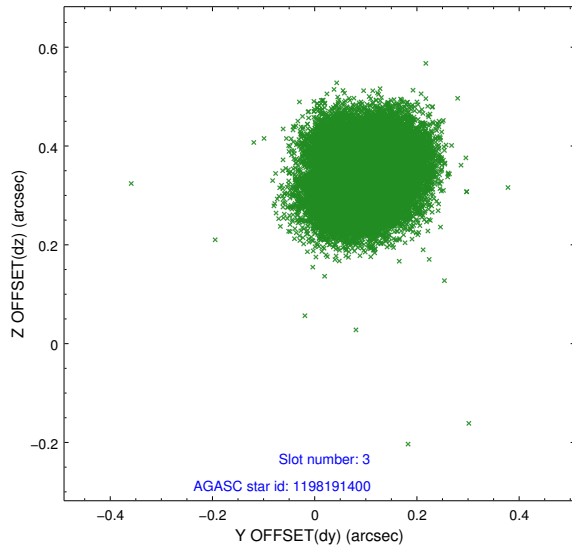
Slot Statistics

slot	status	used	id	mag	n_pts	med_dy	med_dz	dr1	dr2	ra	dec	mean_y	mean_z
0	FID		ACIS-I-1	7.07	11159	0.037	0.022	0.021	0.040	0.000000	0.000000	920.66	-842.77
1	FID		ACIS-I-5	7.06	11158	-0.243	0.038	0.012	0.027	0.000000	0.000000	-1827.76	1054.70
2	FID		ACIS-I-6	7.07	11159	0.116	0.010	0.024	0.035	0.000000	0.000000	386.24	1699.21
3	GUIDE	used	1198191400	8.41	22228	0.099	0.341	0.086	0.132	11.617890	-72.595865	-581.25	-960.26
4	GUIDE	used	1198192088	9.21	22291	0.047	0.270	0.120	0.188	11.250657	-73.229216	1730.90	-904.34
5	GUIDE	used	1198192176	9.49	22184	-0.093	-0.246	0.154	0.232	14.042526	-73.121350	847.89	1894.25
6	GUIDE	used	1198192408	9.42	22140	0.126	-0.165	0.142	0.230	12.860639	-72.678863	-525.60	406.58
7	GUIDE	used	1198190648	8.06	22313	-0.196	-0.202	0.070	0.108	12.344115	-73.478663	2403.58	370.34

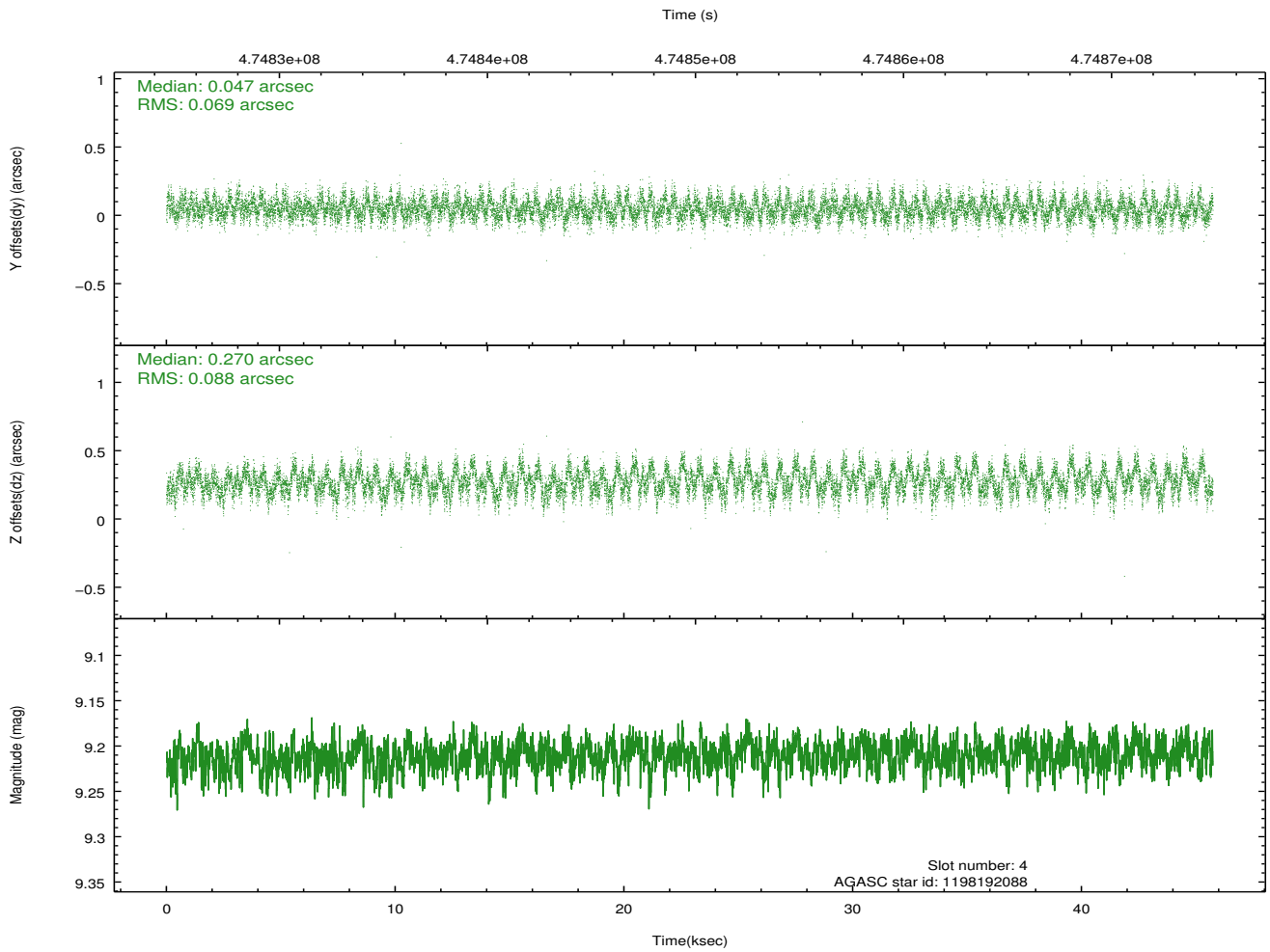
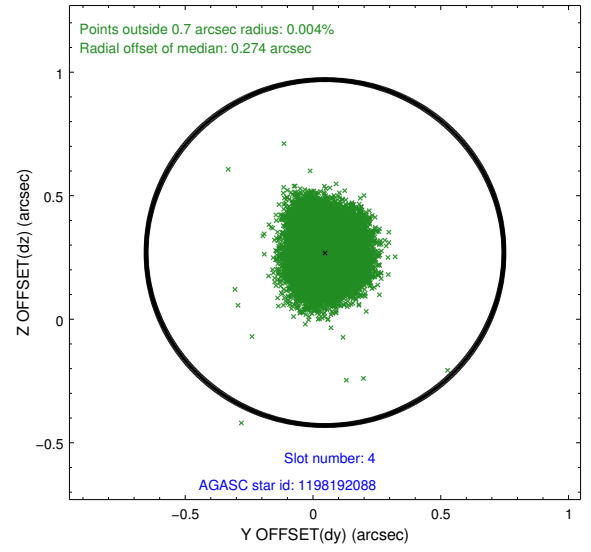
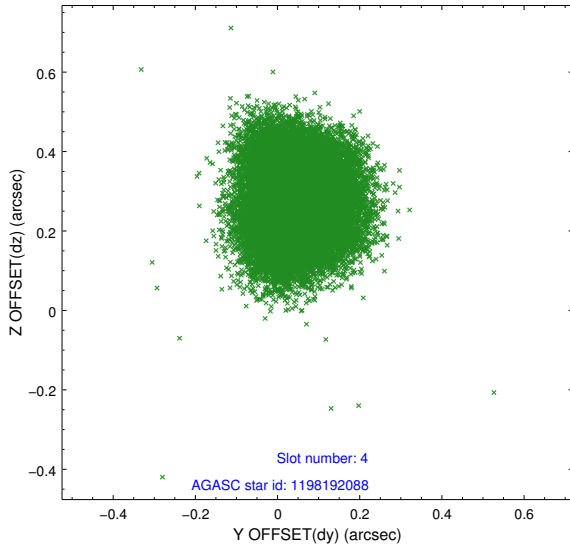
∞

2.4 Star Slots

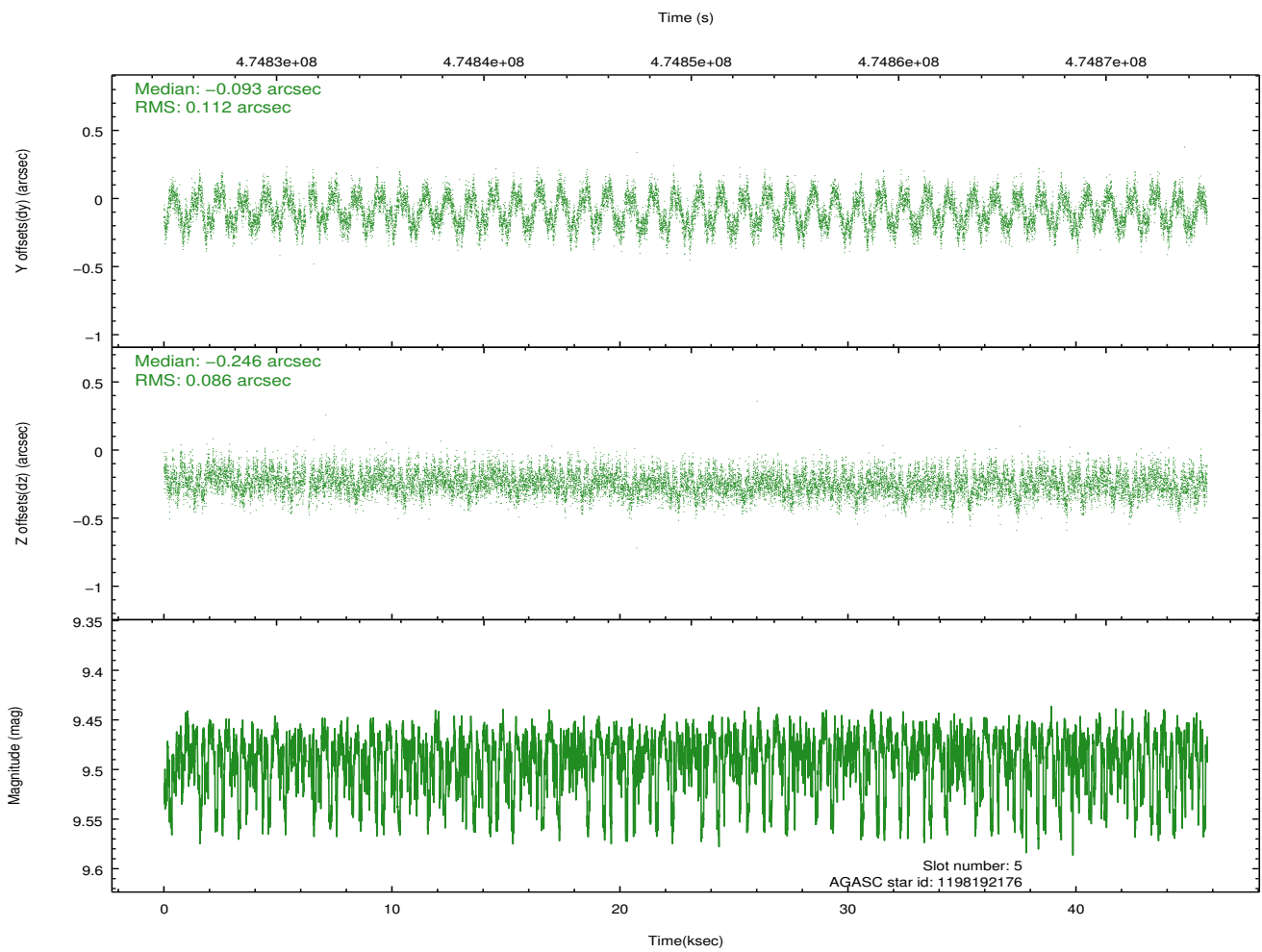
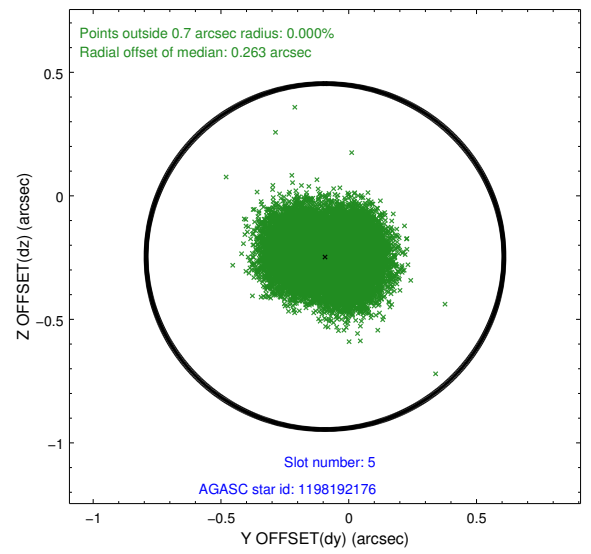
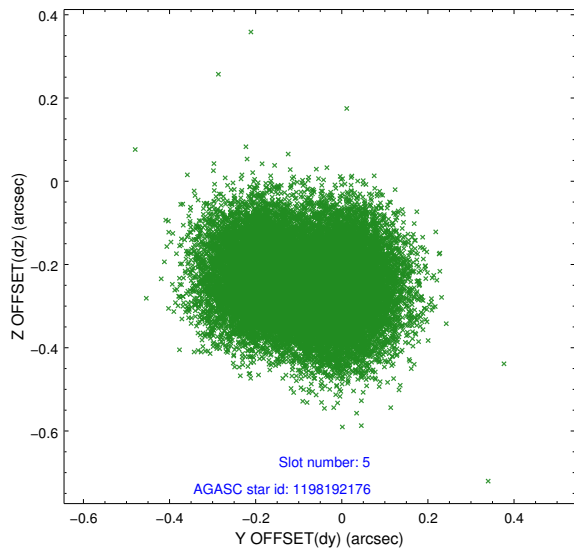
2.4.1 Slot 3



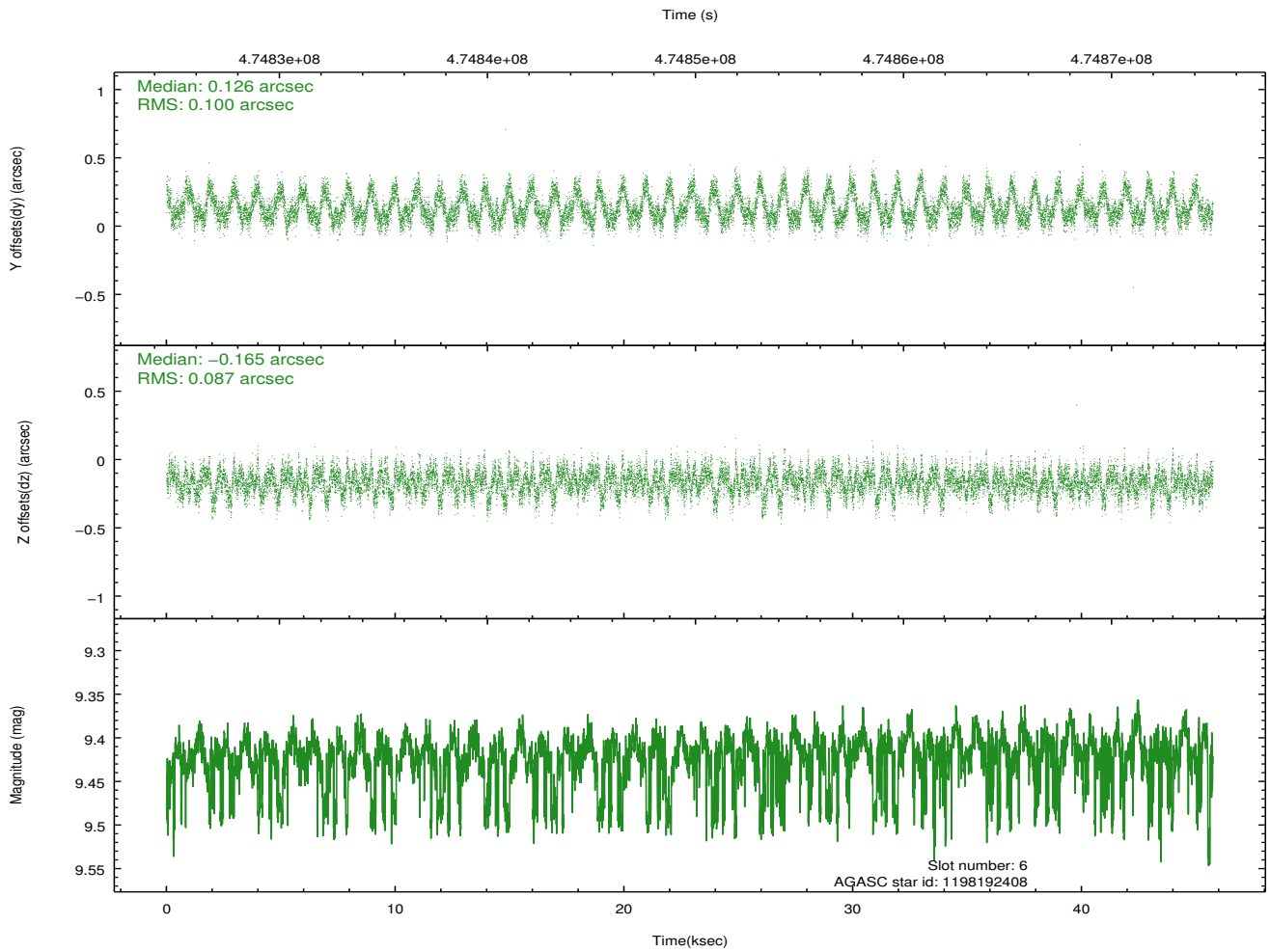
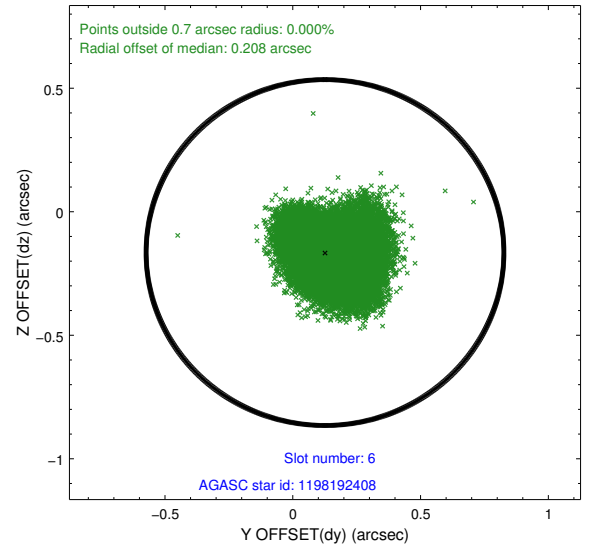
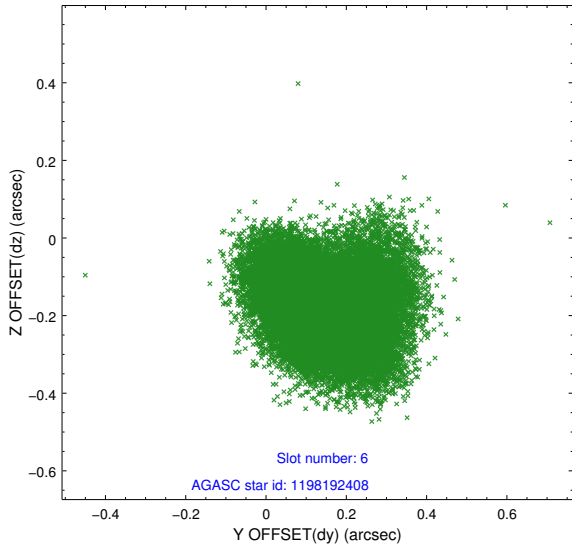
2.4.2 Slot 4



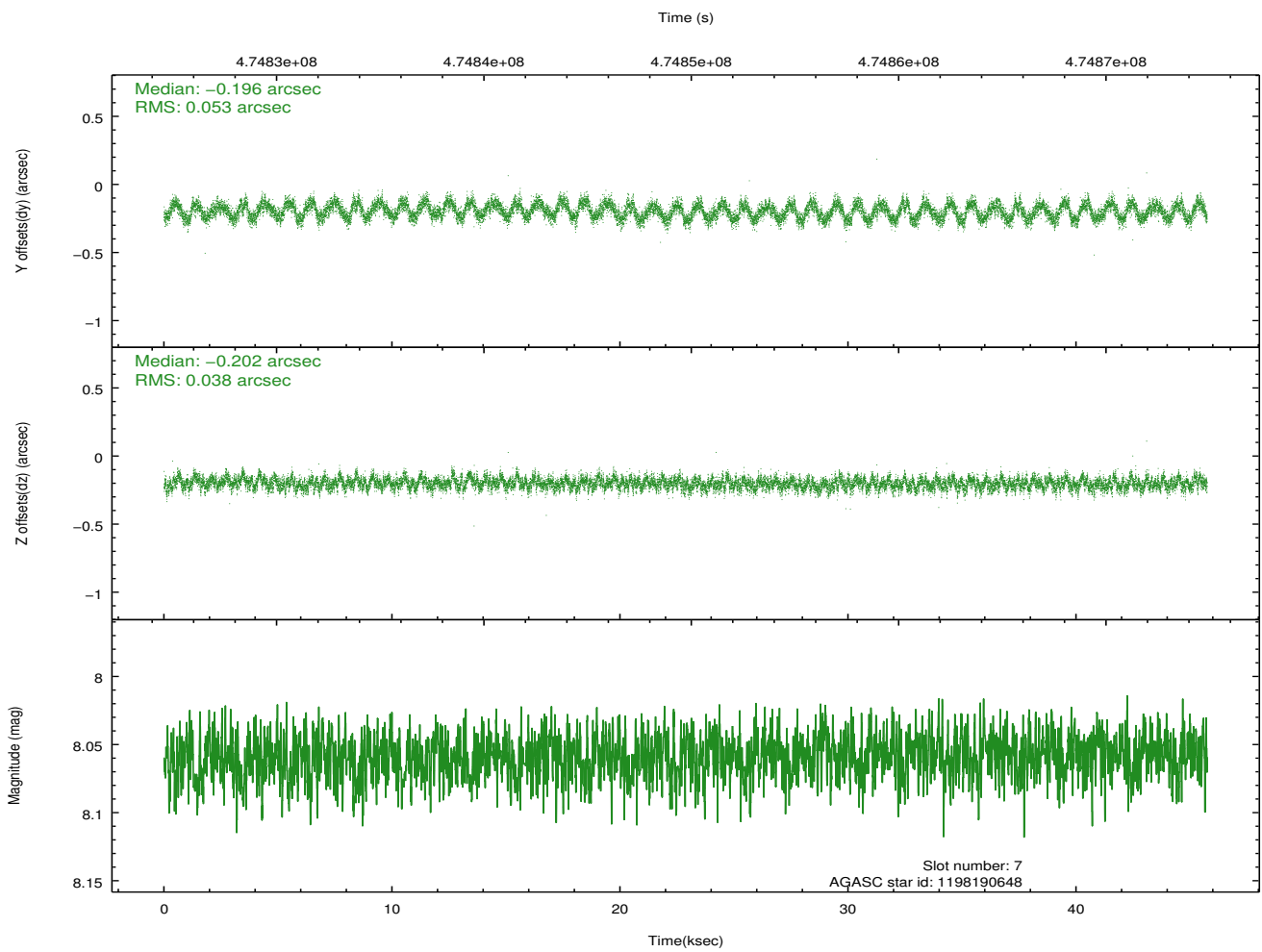
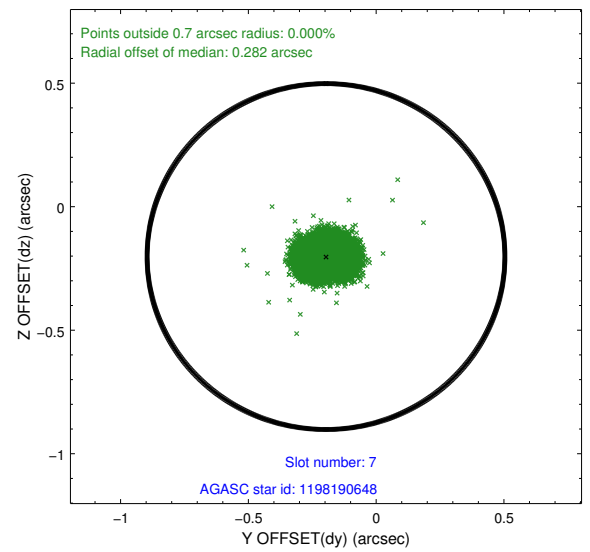
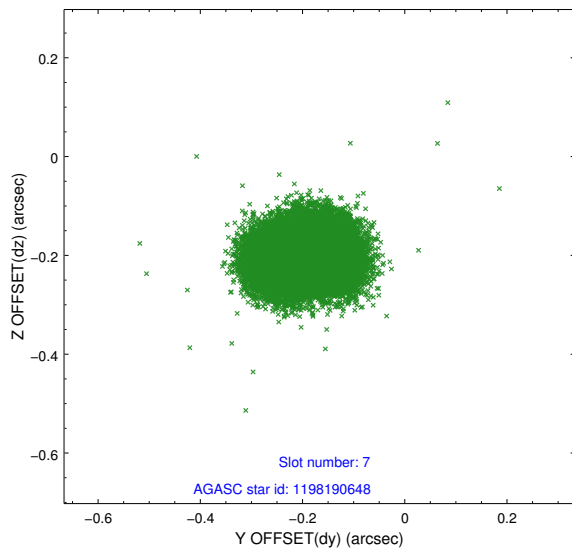
2.4.3 Slot 5



2.4.4 Slot 6

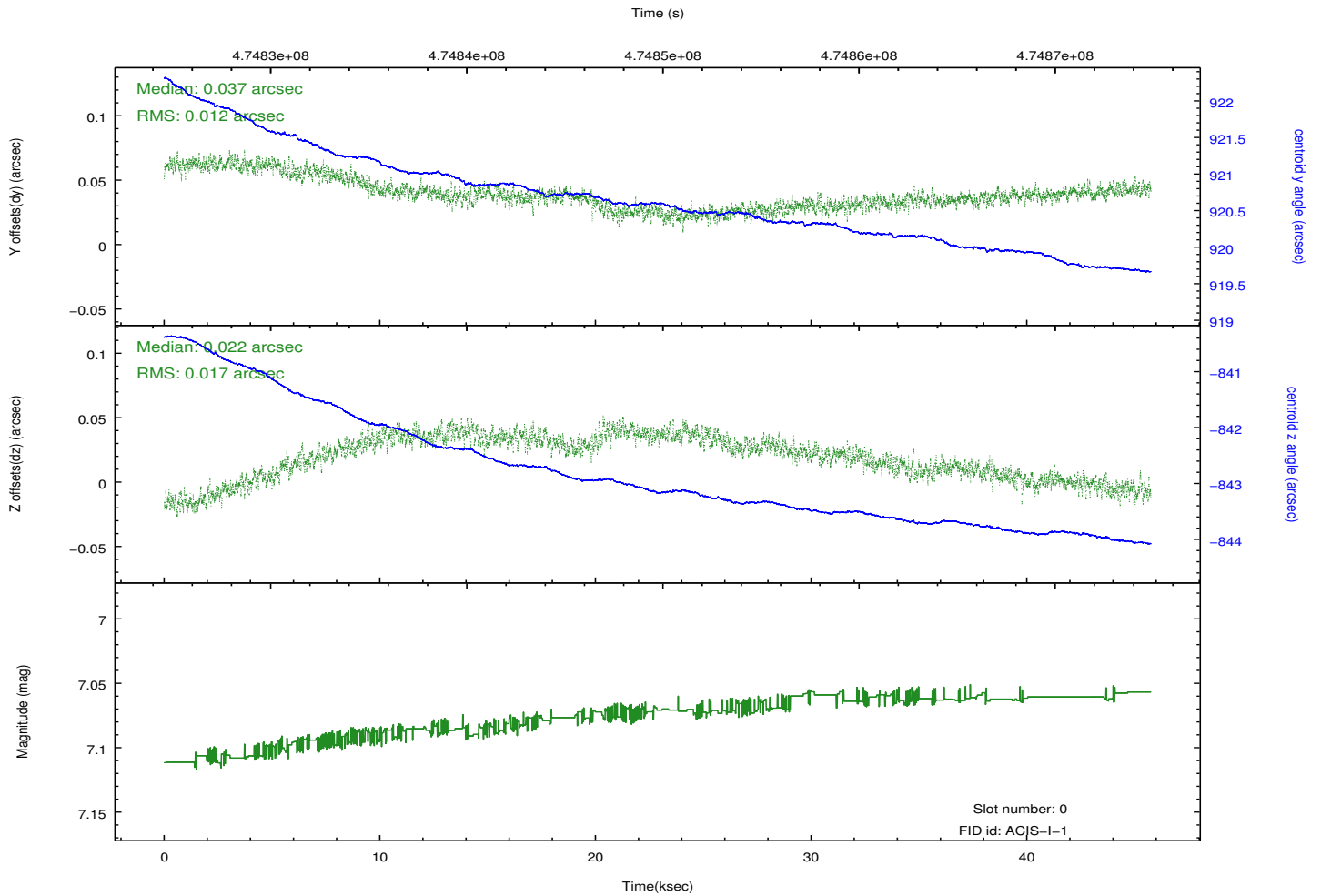
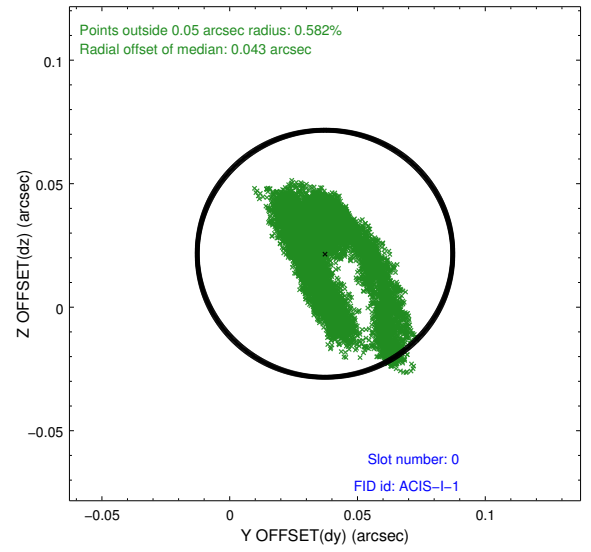
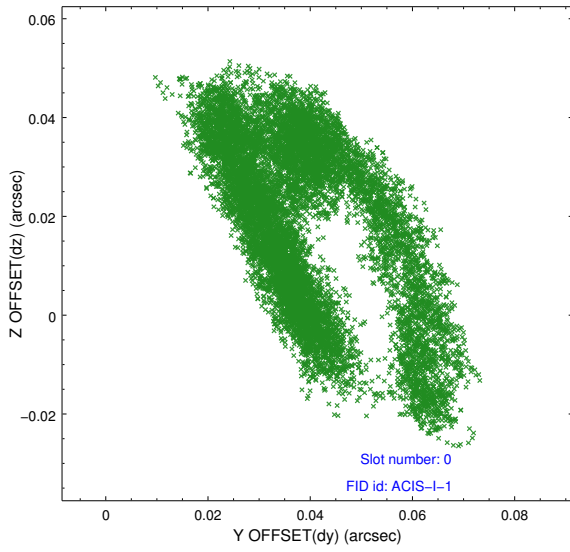


2.4.5 Slot 7

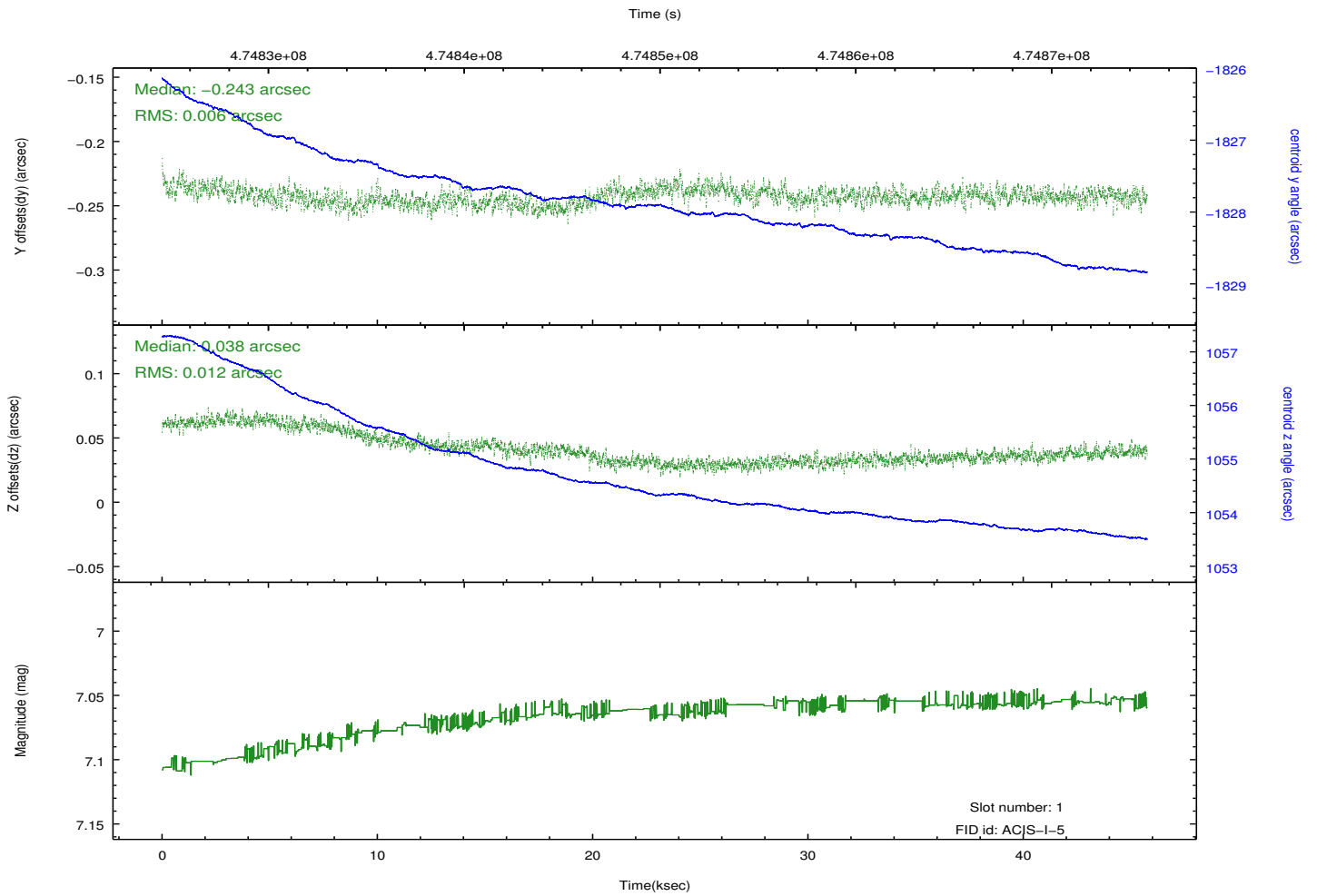
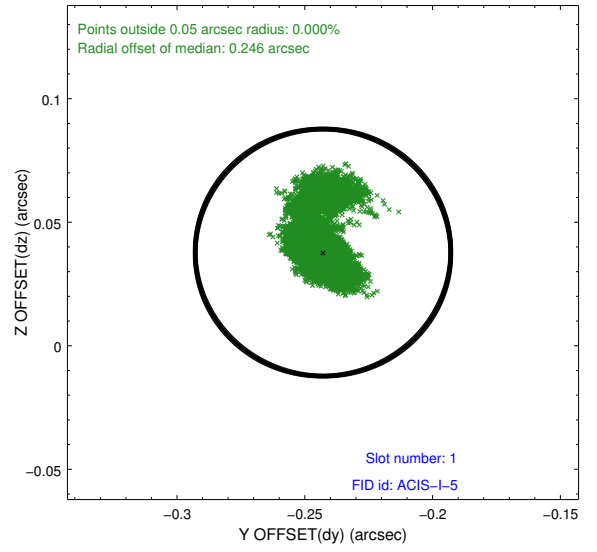
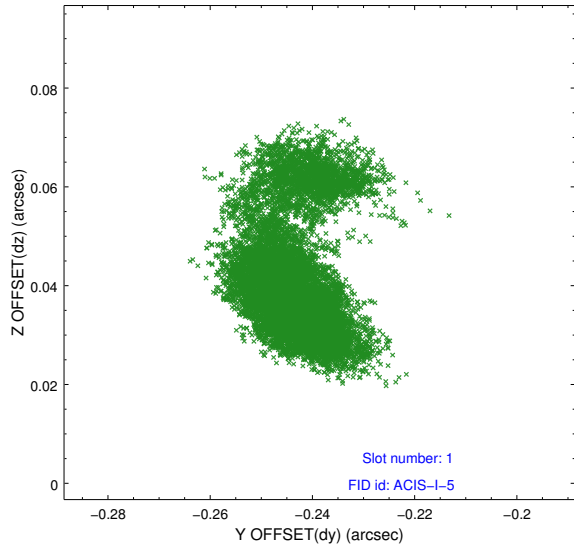


2.5 FID Slots

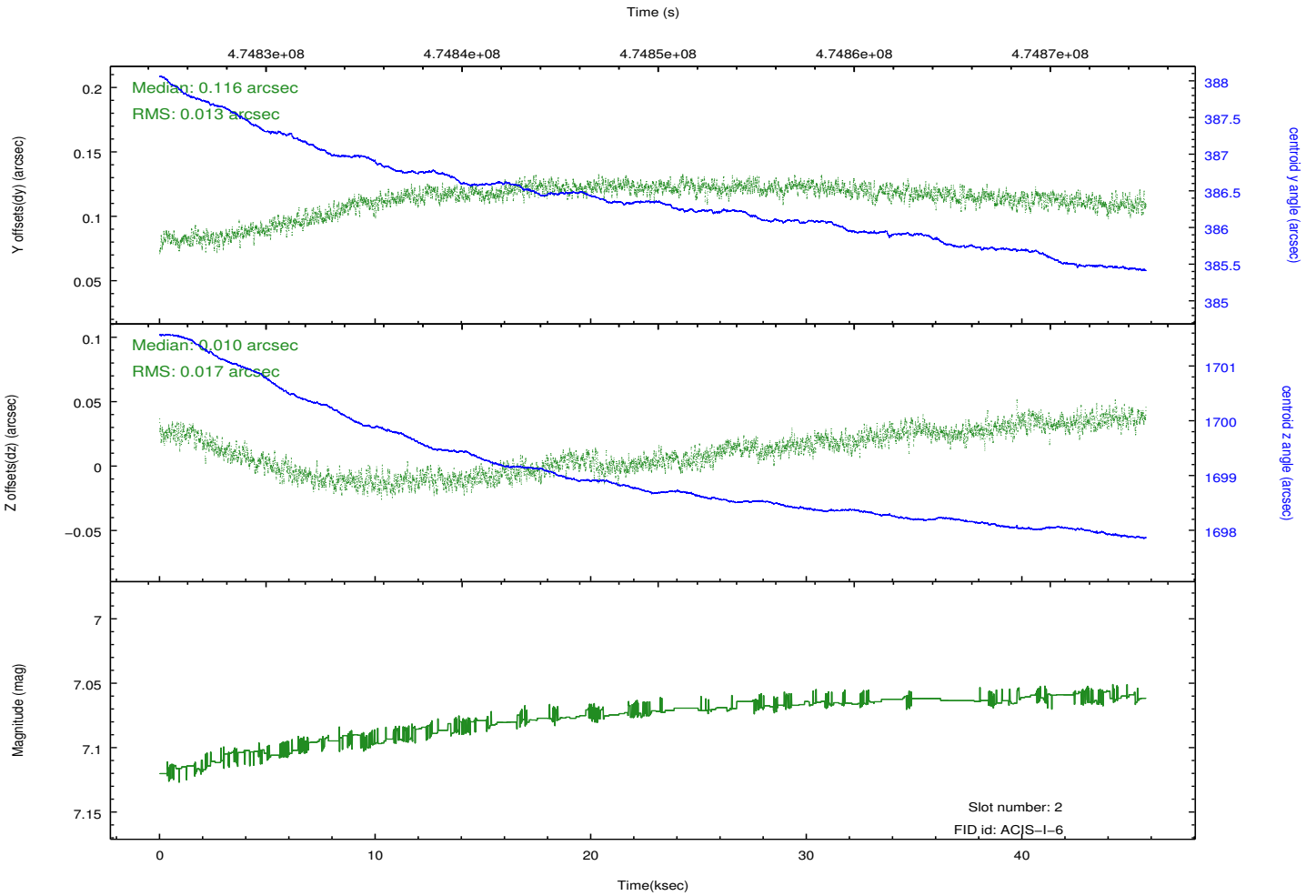
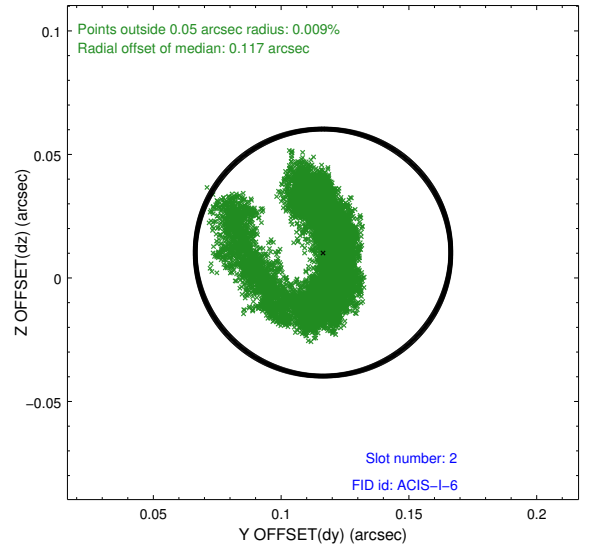
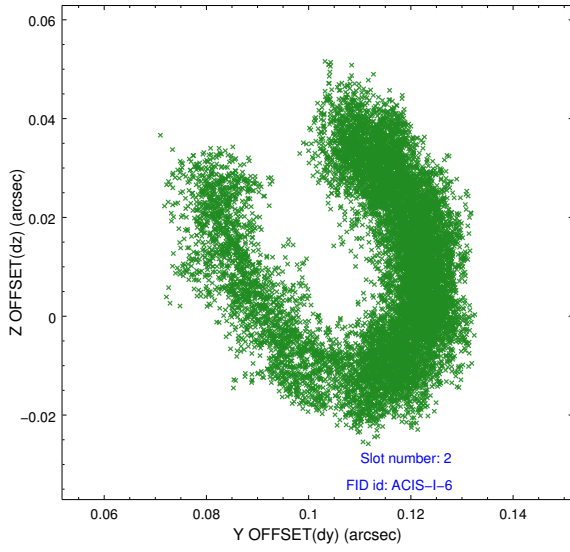
2.5.1 Slot 0



2.5.2 Slot 1



2.5.3 Slot 2



A Summary

A.1 Status

V&V Scientist	Beth Sundheim
V&V Date (YYYY-MM-DD)	2014.12.08
V&V Edition	1
V&V Disposition and Status	OK
V&V Charge Time	45.364177405477

A.2 Comments

These data have been reprocessed with new aspect alignment calibration files that correct small mean offsets (up to 0.4 arcsecs) and improve overall astrometric accuracy. The new calibration was determined using data from the time period being reprocessed and was performed using cross-correlation of X-ray sources with radio and optical counterparts.