

V&V Reference Report

L2 ASCDS Version : 10.2.1

Observation 16212 - L2 Version 2
Chandra X-Ray Center

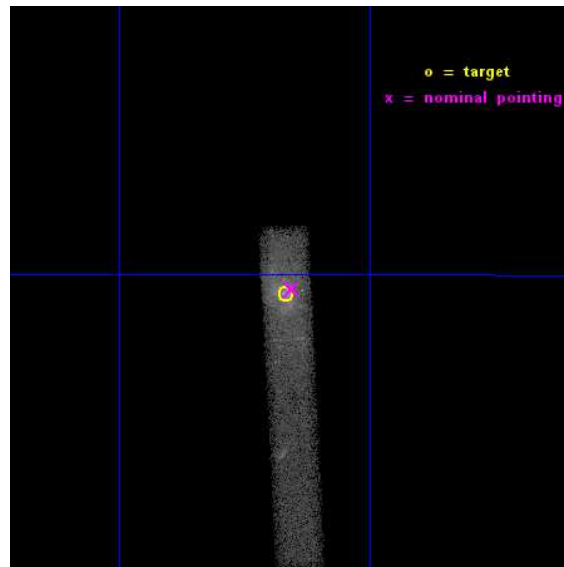
L2 Processing Date : Dec 11 2014

Contents

1	Front	2
2	OBI	3
2.1	OBI	3
2.1.1	Images	3
2.1.2	Bias	3
2.1.3	Parameters	4
2.1.4	Events	4
2.2	Compared Parameters	5
2.3	Aspect	6
2.4	Star Slots	9
2.4.1	Slot 3	9
2.4.2	Slot 4	10
2.4.3	Slot 5	11
2.4.4	Slot 6	12
2.4.5	Slot 7	13
2.5	FID Slots	14
2.5.1	Slot 0	14
2.5.2	Slot 1	15
2.5.3	Slot 2	16
A	Summary	17
A.1	Status	17
A.2	Comments	17

1 Front

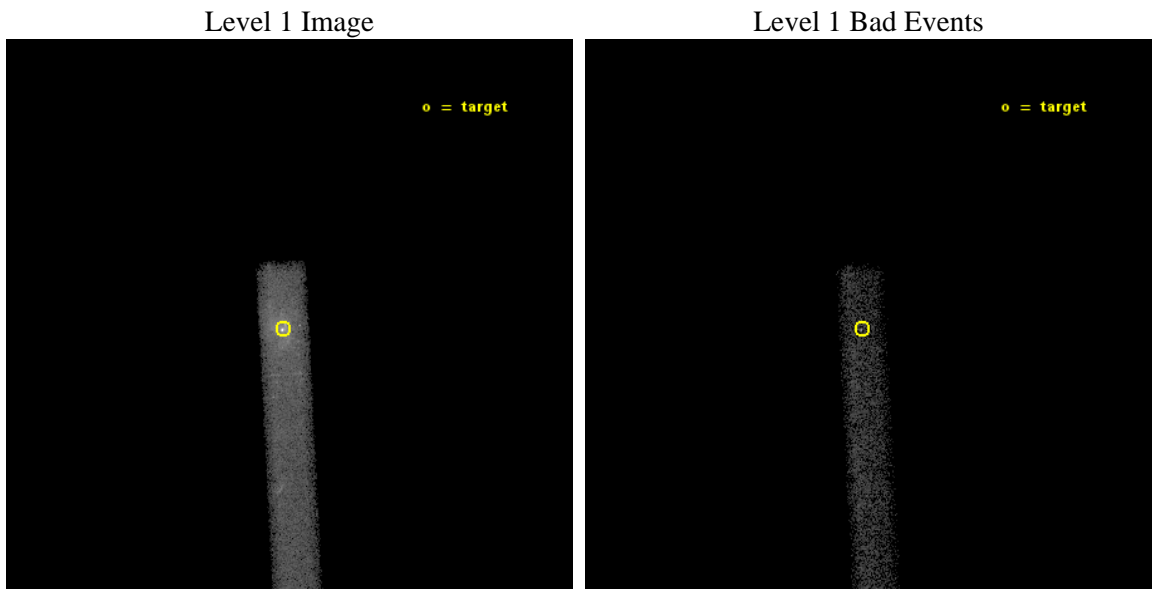
seq_num	601124	Sequence number
obs_id	16212	Observation id
title	Monitoring the Tidal Disruption of the Gas Cloud G2 As It Encounters Sgr A*	Proposal title
observer	Dr. Daryl Haggard	Principal investigator
object	Sgr A*	Source name
dtycle	0	
cycle	P	events from which exps? Prim/Second/Both
ra_targ	266.416667	Observer's specified target RA [deg]
dec_targ	-29.007806	Observer's specified target Dec [deg]
ra_nom	266.41385856059	Nominal RA [deg]
dec_nom	-29.006045865088	Nominal Dec [deg]
roll_nom	86.96052309722	Nominal Roll [deg]
revision	2	Processing version of data
ontime	50070.397015572	Sum of GTIs [s]
livetime	45411.207160867	Livetime [s]
ontime7	50070.397015572	Sum of GTIs [s]
l2events	51513	Number of level 2 events



2 OBI

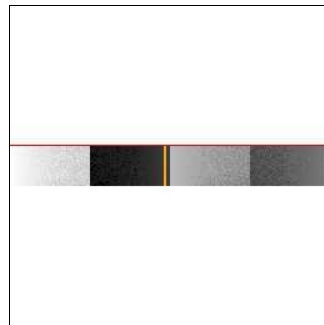
2.1 OBI

2.1.1 Images



2.1.2 Bias

Chip 7



2.1.3 Parameters

obi_num	0	Obi number	sched_exp_time	50000.000000	[s] Scheduled observation exposure time
ascdsver	10.3.1	Processing system revision	ontime	50070.397015572	Sum of GTIs [s]
caldbver	4.6.4	 	ontime7	50070.397015572	Sum of GTIs [s]
date	2014-12-11T05:49:42	Date and time of file creation	l1events	75418	Number of level 1 events
revision	2	Processing version of data			

2.1.4 Events

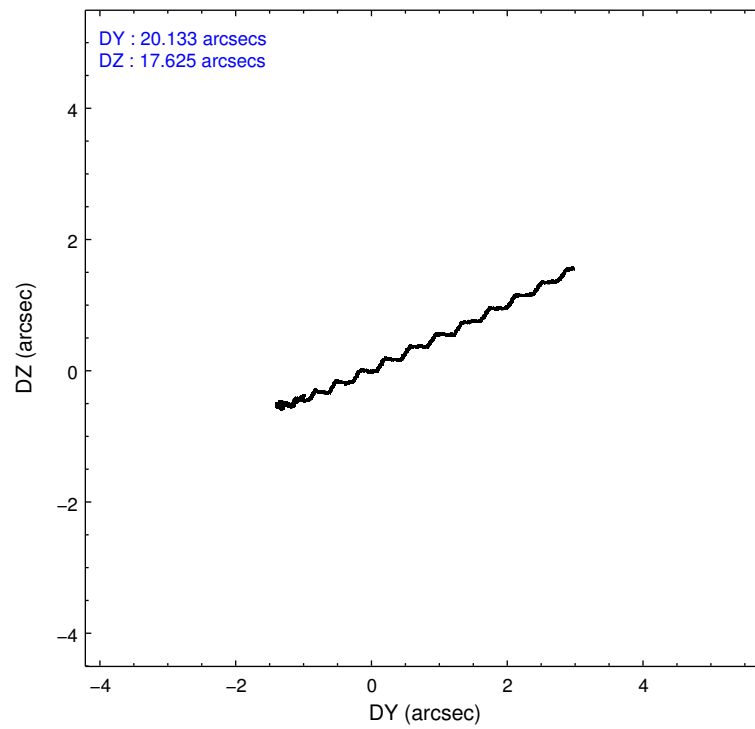
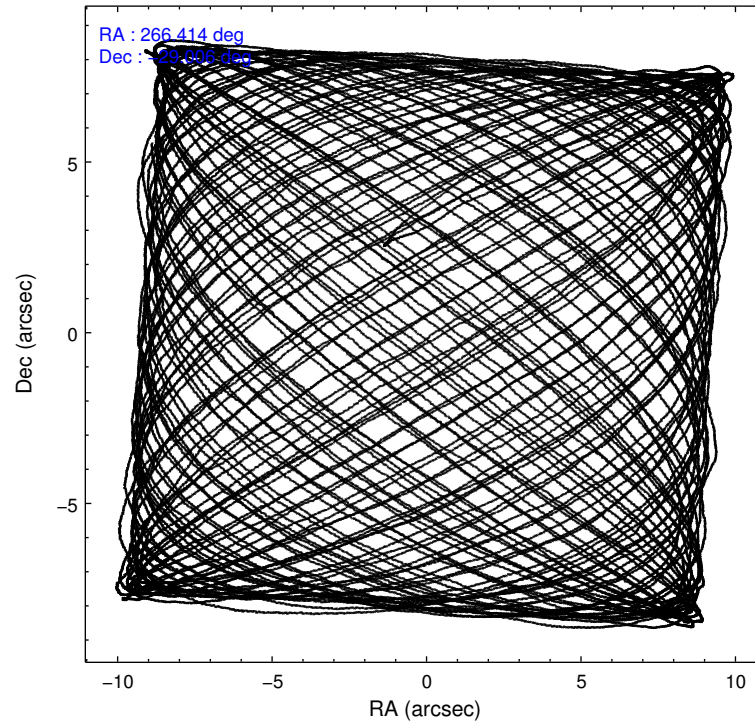
	ccd 7
level 1 events	75418
rejected events	22858
rejected %	30%

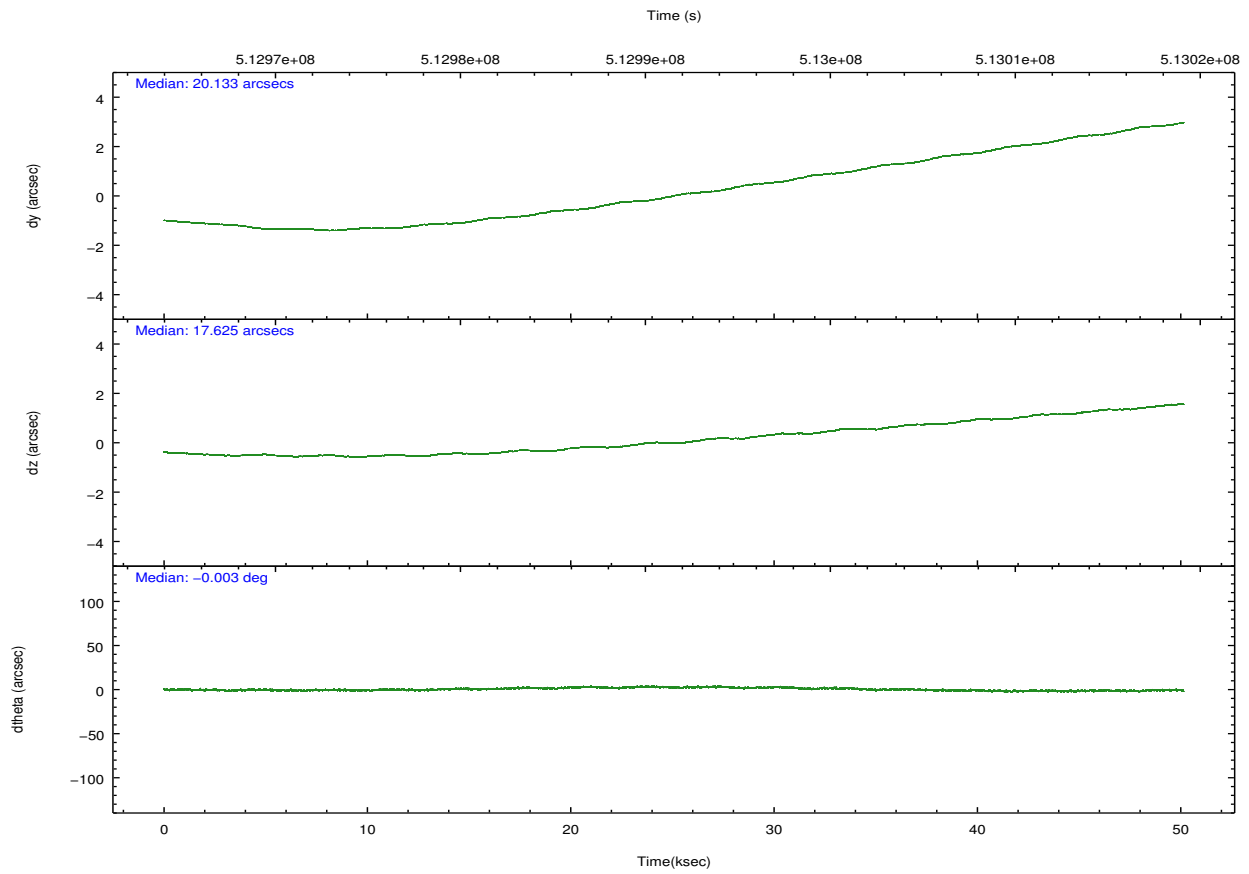
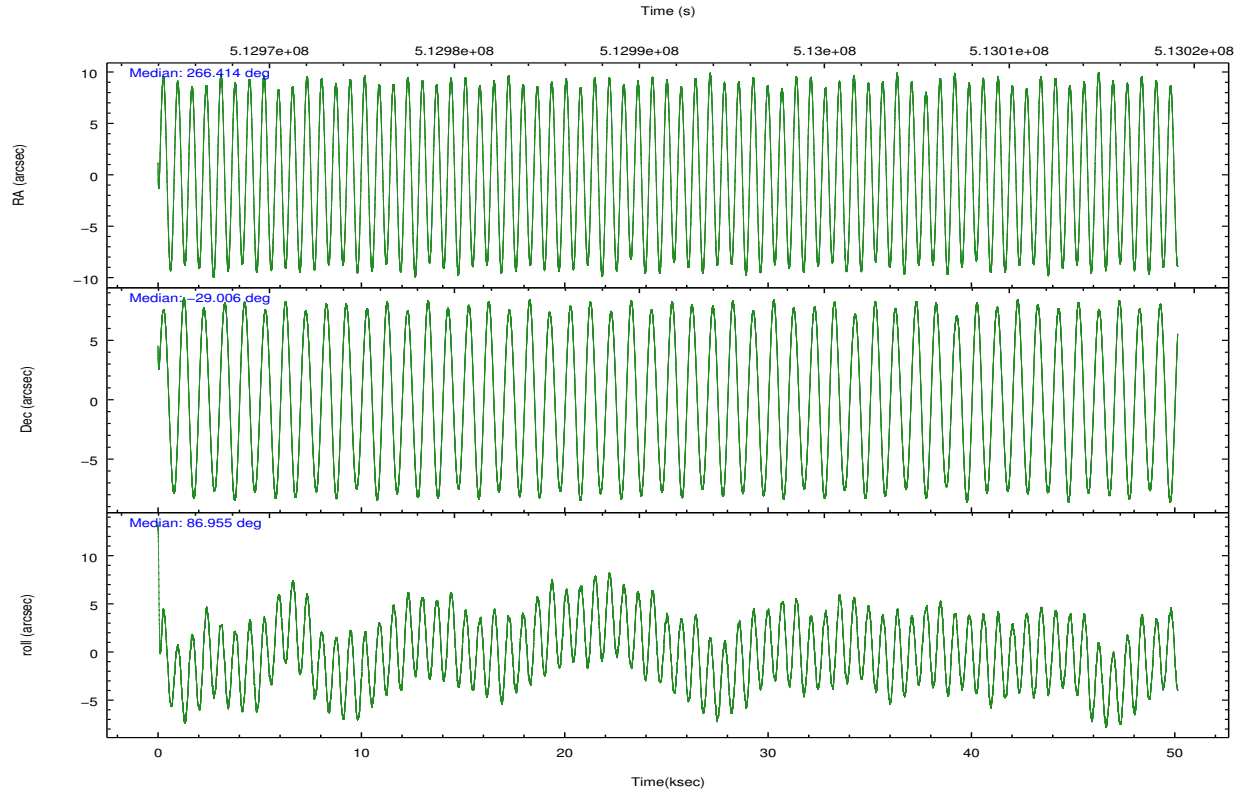
	ccd 7
grade 0 events	8224
	10%
grade 1 events	72
	0%
grade 2 events	11540
	15%
grade 3 events	6305
	8%
grade 4 events	6152
	8%
grade 5 events	4908
	6%
grade 6 events	20339
	26%
grade 7 events	17878
	23%

2.2 Compared Parameters

Parameter	Planned	Actual	Parameter	Planned	Actual
Instrument	ACIS	ACIS	Obspar format version number	7	7
Detector	ACIS-7	ACIS-7	Obspar file type	PREDICTED	ACTUAL
Grating	NONE	NONE	Obspar update status	NONE	UPDATED
Data mode	FAINT	FAINT	Number of optional ACIS chips dropped	0	0
Observation mode	POINTING	POINTING	On-chip summing requested	N	N
[deg] Pointing RA	266.428408	266.4138585605863	Subarray requested	CUSTOM	1/8
[deg] Pointing Dec	-29.030250	-29.00604586508774	Subarray start row	449	449
[deg] Pointing Roll	86.810955	86.96052309721971	Subarray row count	128	128
[s] Window start time (MET)	512438467.184000	512438467.184000	Alternating exposures requested	N	N
[s] Window stop time (MET)	513129667.184000	513129667.184000	[s] Primary exposure time	0.000000	0.4
[mm] SIM focus pos	-0.684267	-0.6828225247311905			
[mm] SIM defocus	0	0.001444936568705701			
[mm] SIM translation stage pos	-190.132523	-190.1400660498719			
[mm] SIM translation stage offset	0	0.00754346686406393			
[s] Observation start time (MET)	512966606.184000	512965587.12424			
Observation start date	2014-04-04T02:42:19	2014-04-04T02:26:27			
[s] Observation end time (MET)	513016606.184000	513017366.0271			
Observation end date	2014-04-04T16:35:39	2014-04-04T16:49:26			
Read mode	TIMED	TIMED			

2.3 Aspect





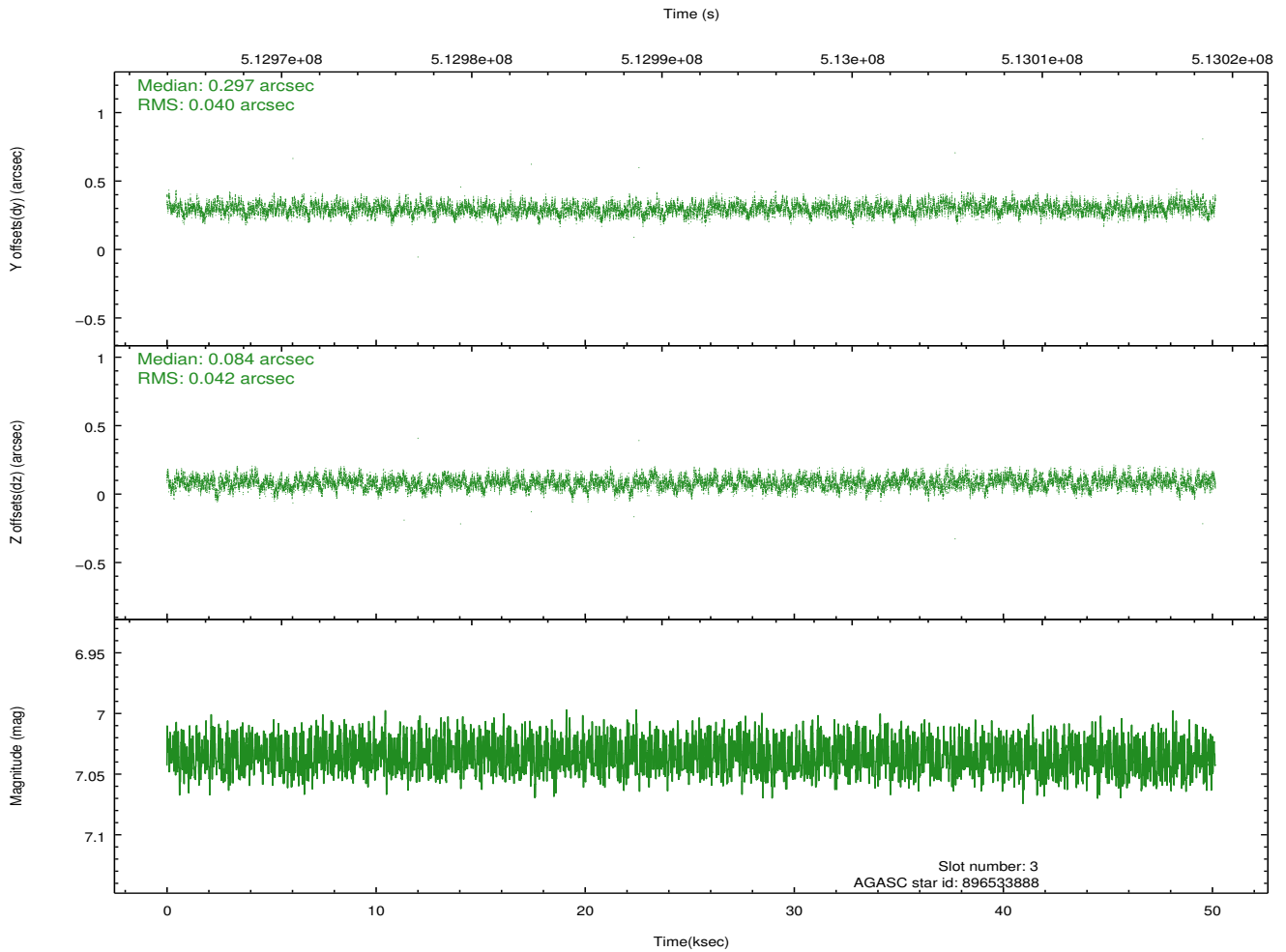
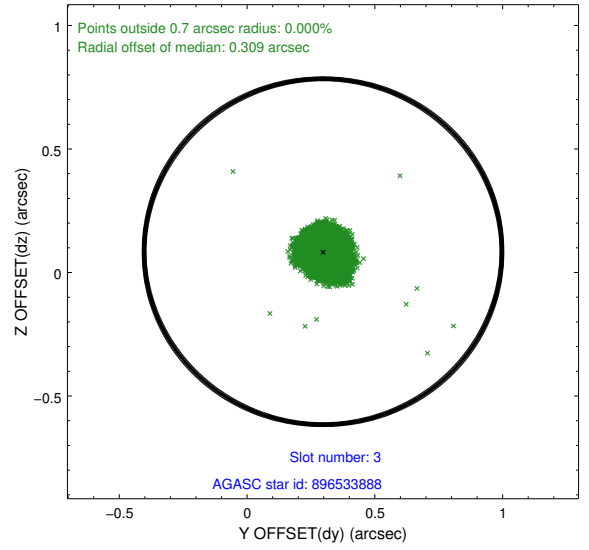
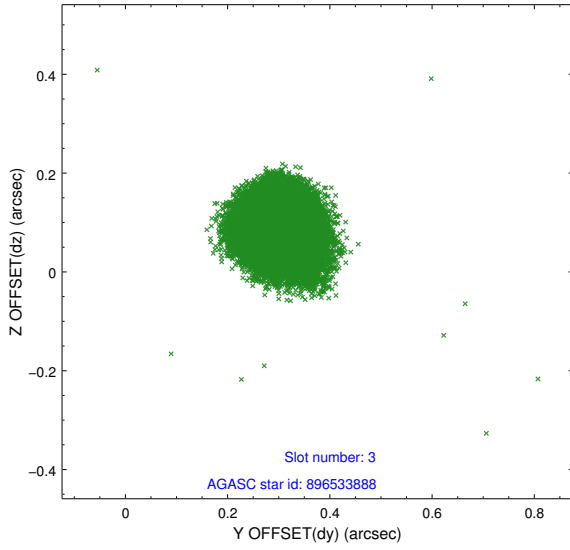
Slot Statistics

slot	status	used	id	mag	n_pts	med_dy	med_dz	dr1	dr2	ra	dec	mean_y	mean_z
0	FID		ACIS-S-2	6.96	12232	-0.016	-0.033	0.012	0.018	0.000000	0.000000	-773.56	-1739.28
1	FID		ACIS-S-5	7.07	12231	-0.116	-0.016	0.022	0.038	0.000000	0.000000	-1826.72	162.75
2	FID		ACIS-S-6	7.18	12230	0.108	0.057	0.022	0.044	0.000000	0.000000	388.24	806.66
3	GUIDE	used	896533888	7.04	24463	0.297	0.084	0.062	0.098	266.666434	-29.392757	-1261.83	-817.92
4	GUIDE	used	896534664	8.21	24459	-0.794	-0.426	0.064	0.105	266.405570	-28.407461	2233.71	196.88
5	GUIDE	used	896537176	8.04	24460	-0.103	-0.065	0.064	0.101	266.498272	-28.678259	1277.44	-149.57
6	GUIDE	used	896538208	7.96	24462	0.064	0.295	0.061	0.102	267.176969	-28.671626	1413.53	-2288.74
7	GUIDE	used	896537776	7.52	24460	0.536	0.112	0.060	0.095	266.655684	-29.665673	-2244.43	-837.17

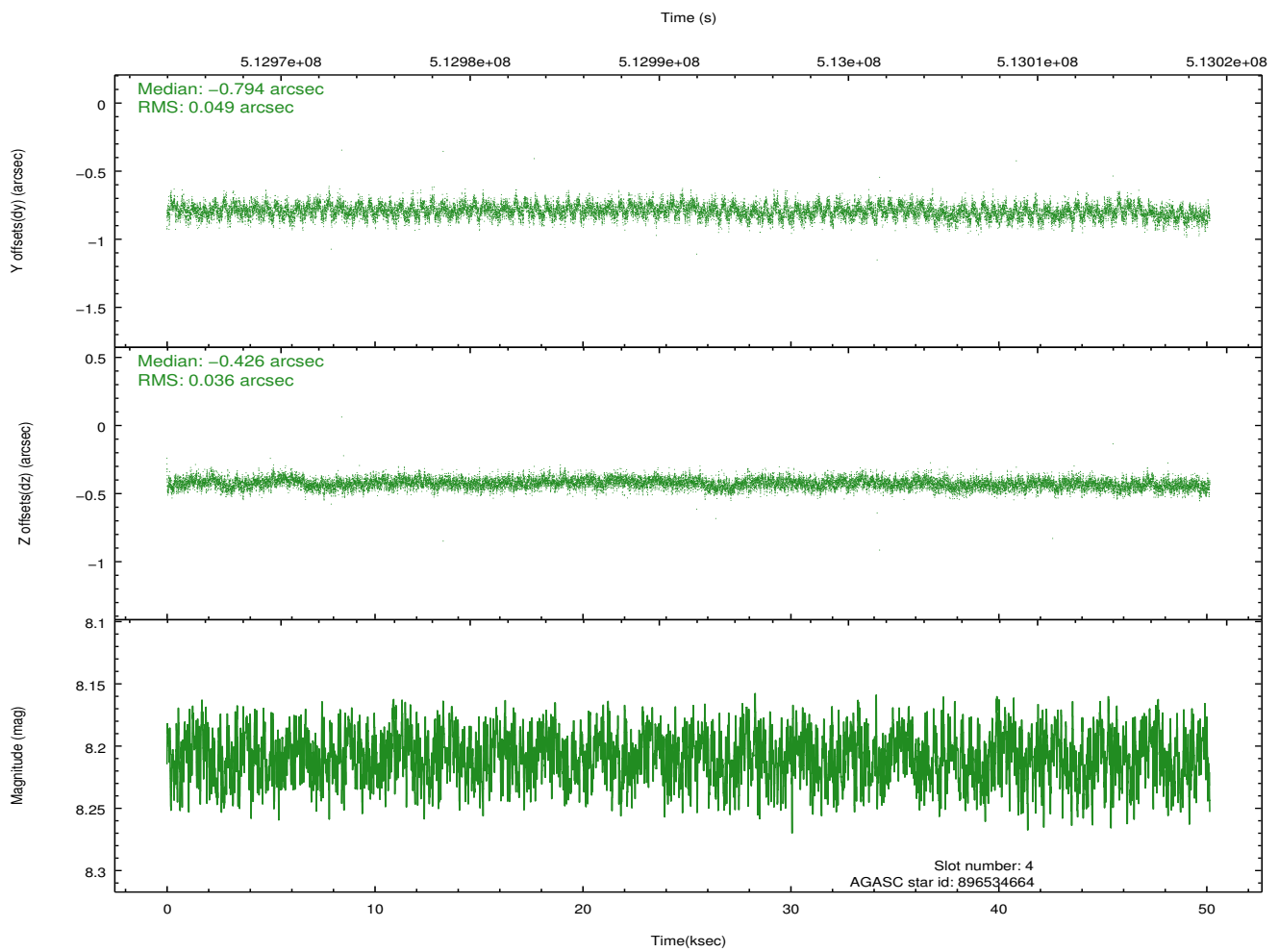
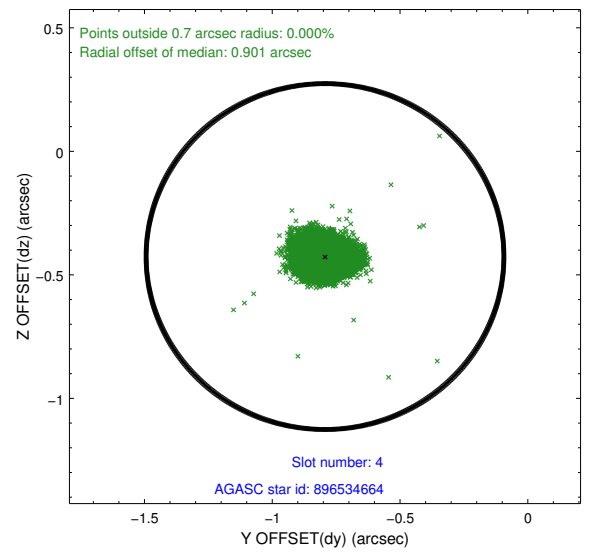
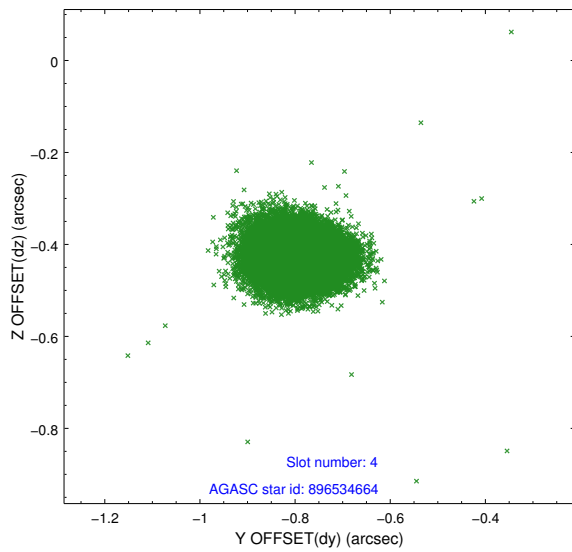
∞

2.4 Star Slots

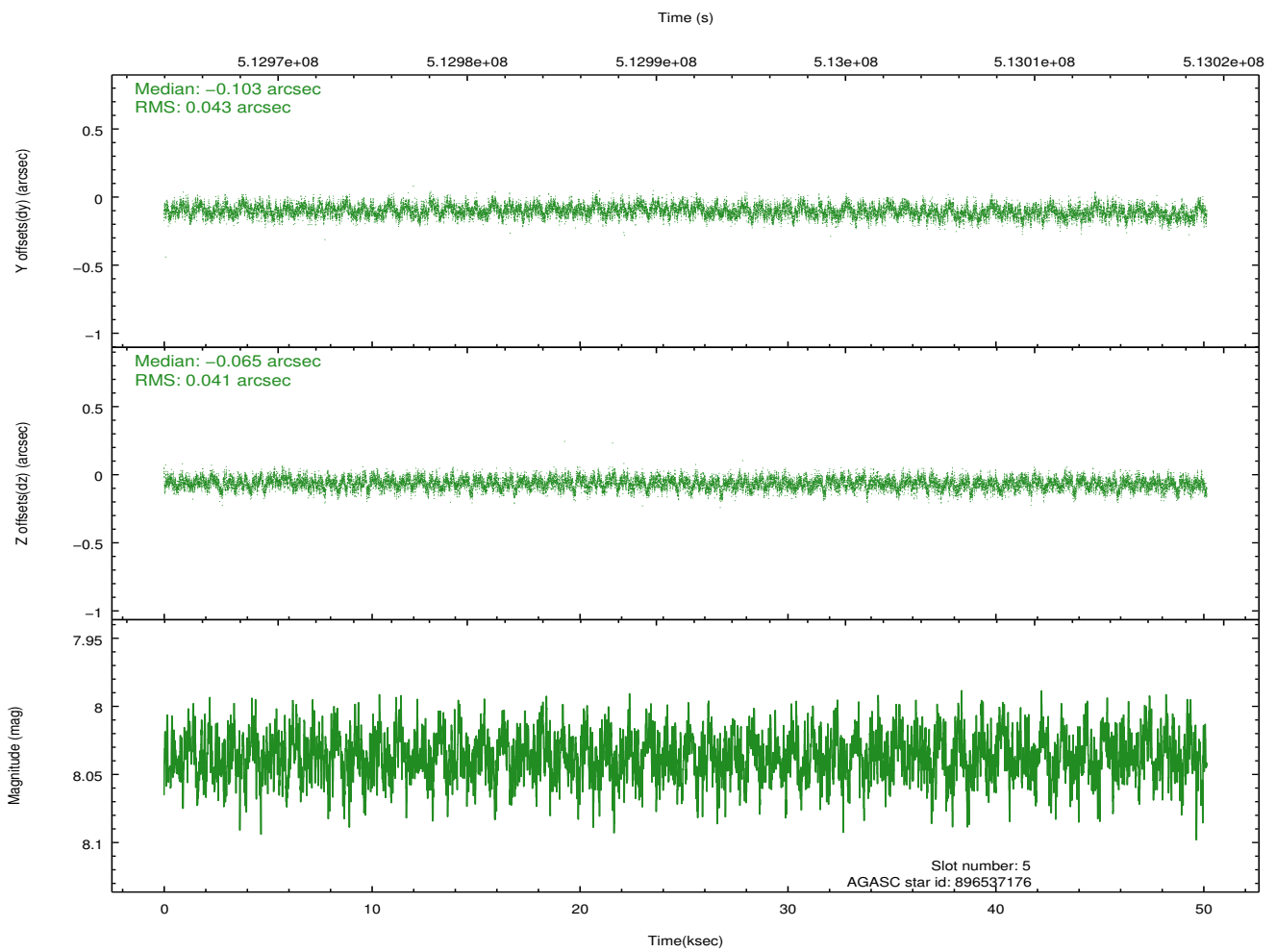
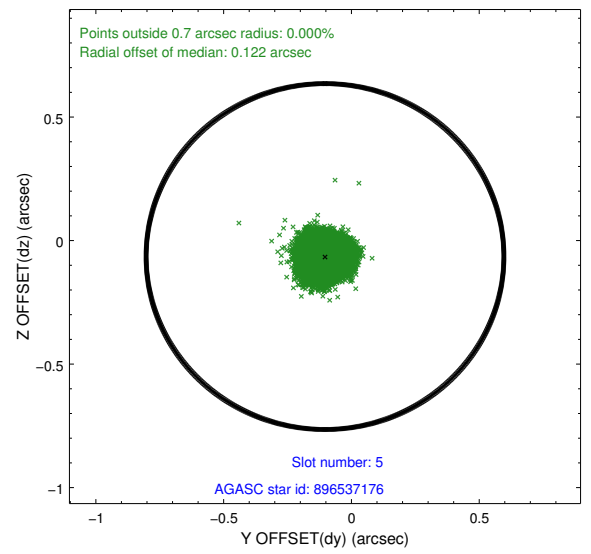
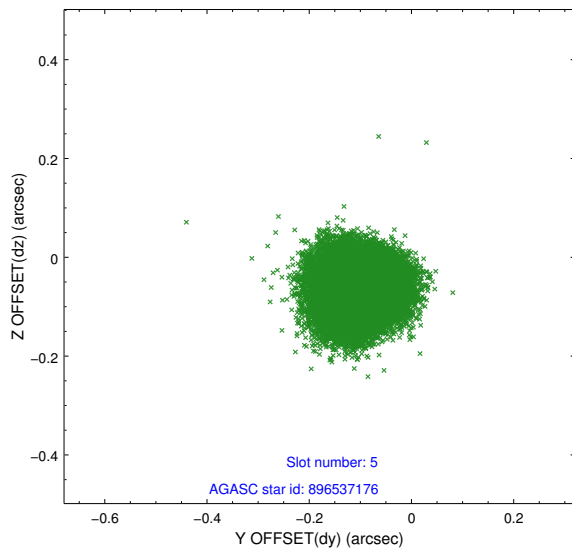
2.4.1 Slot 3



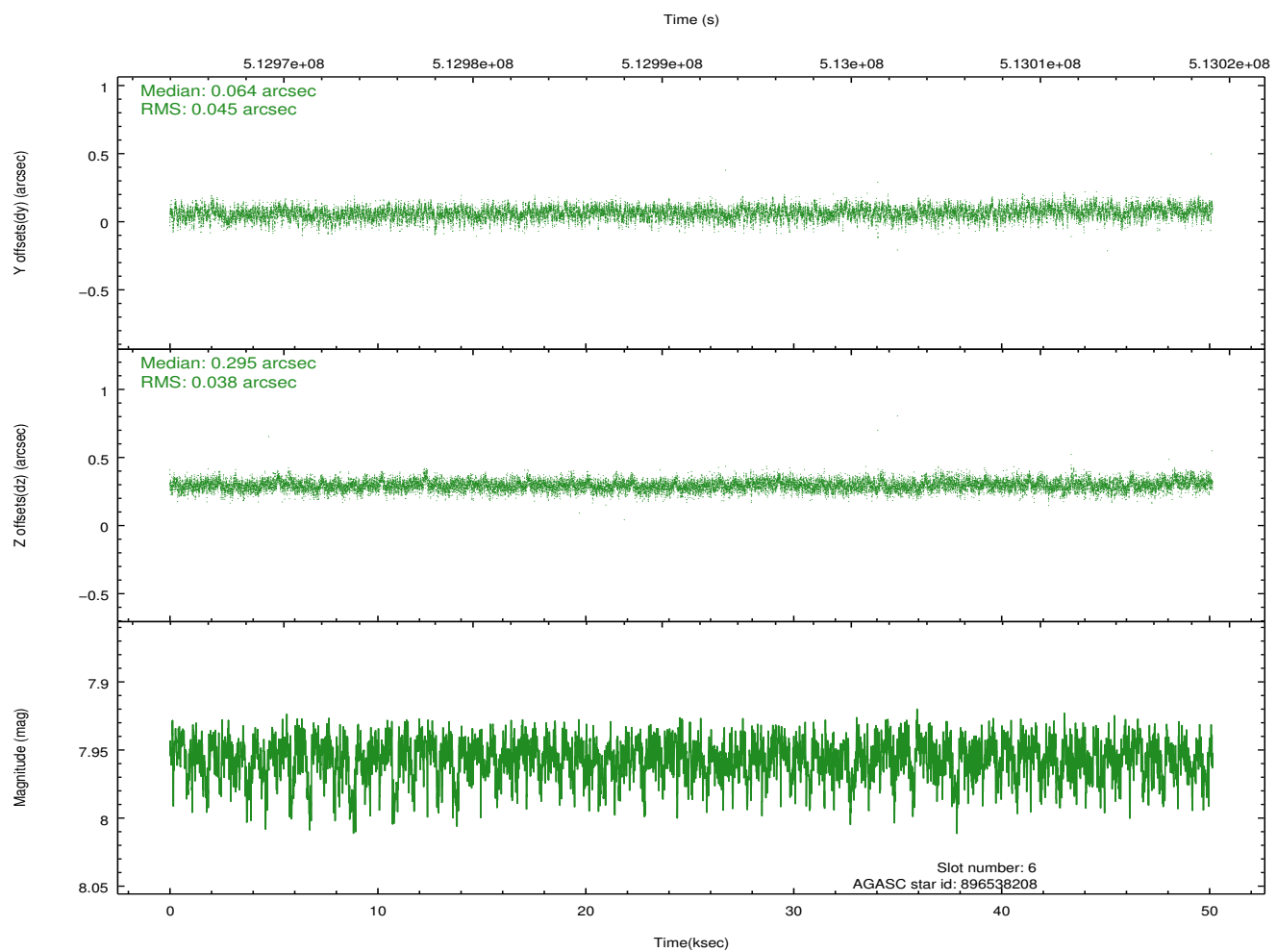
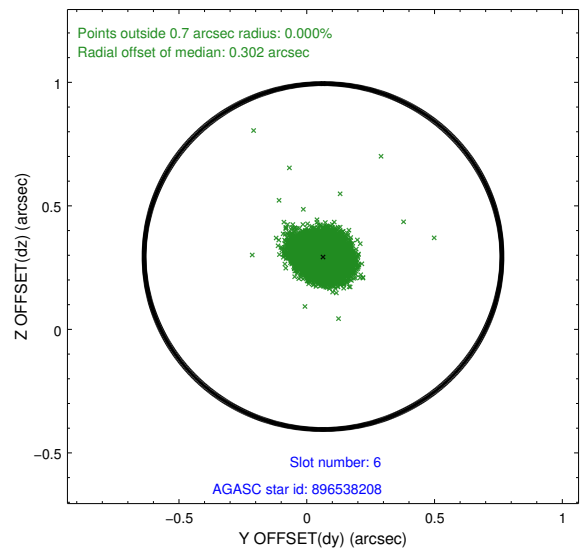
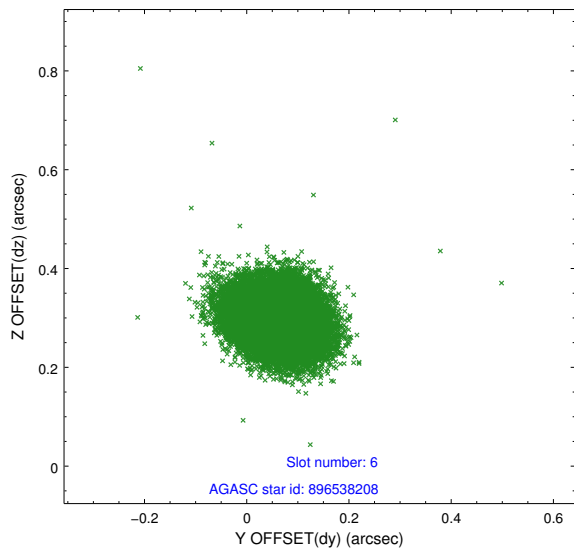
2.4.2 Slot 4



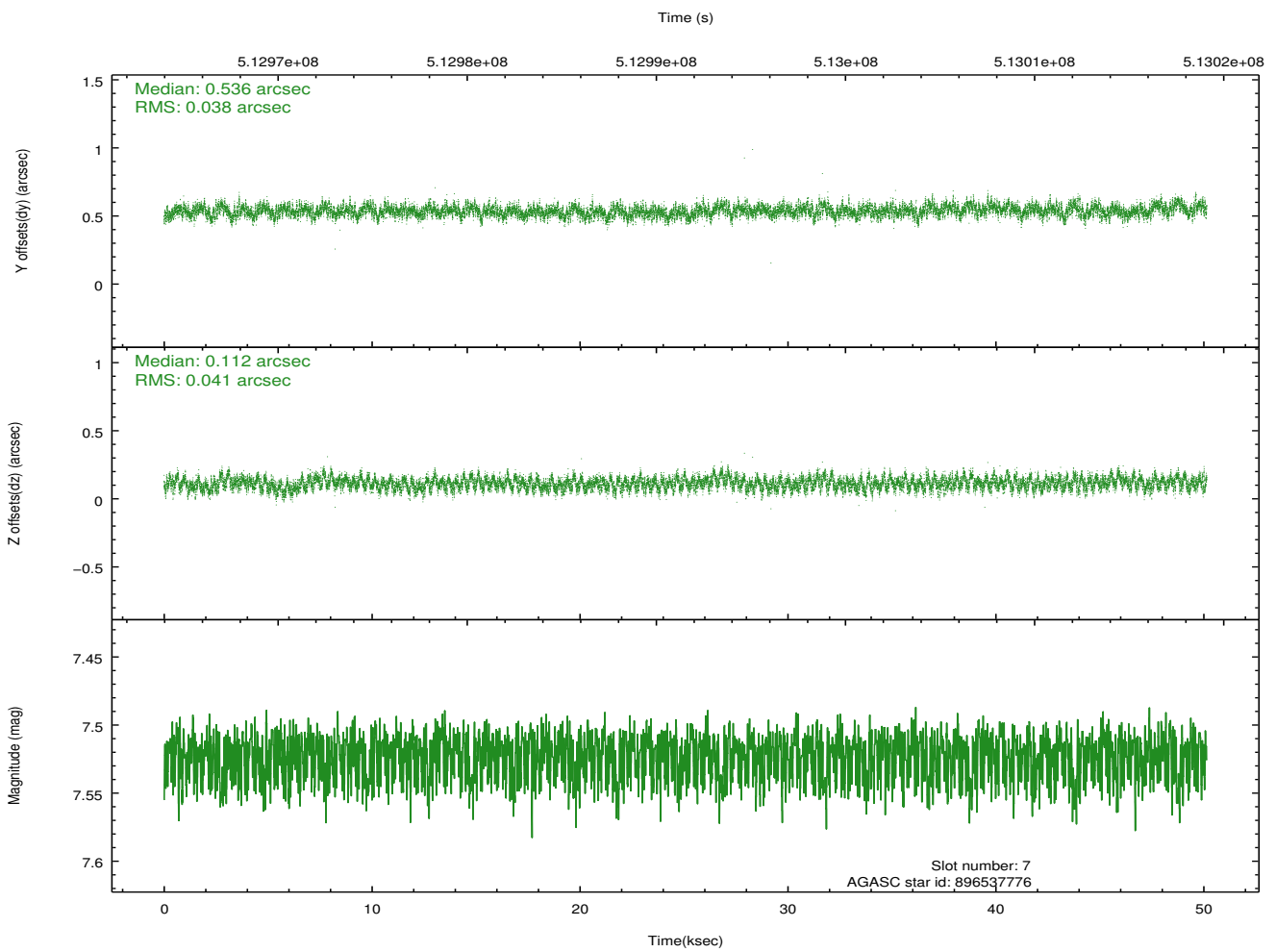
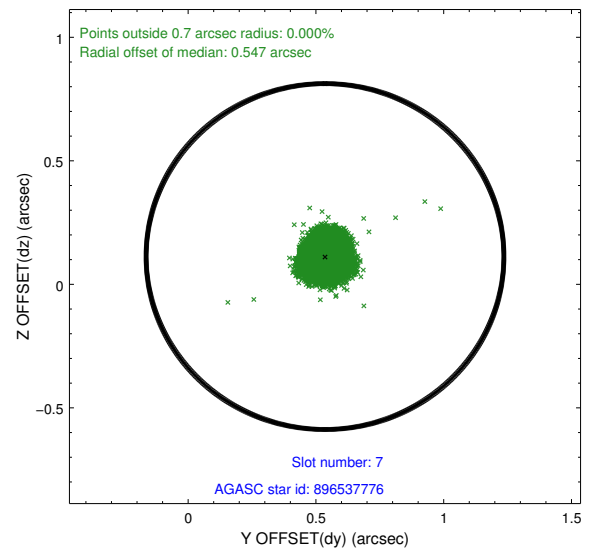
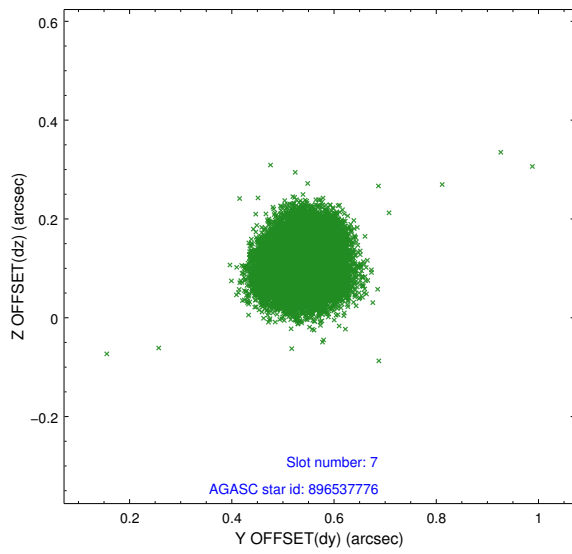
2.4.3 Slot 5



2.4.4 Slot 6

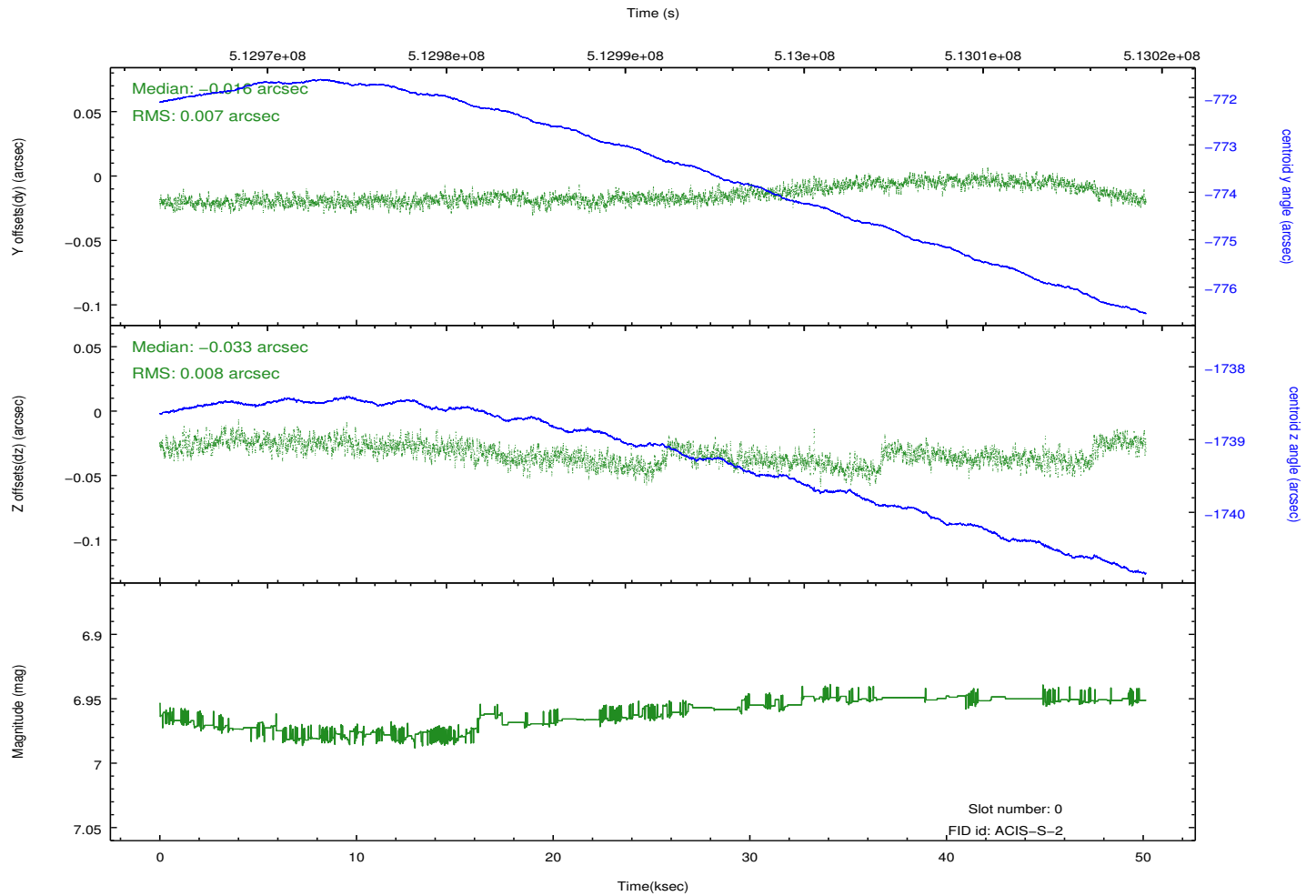
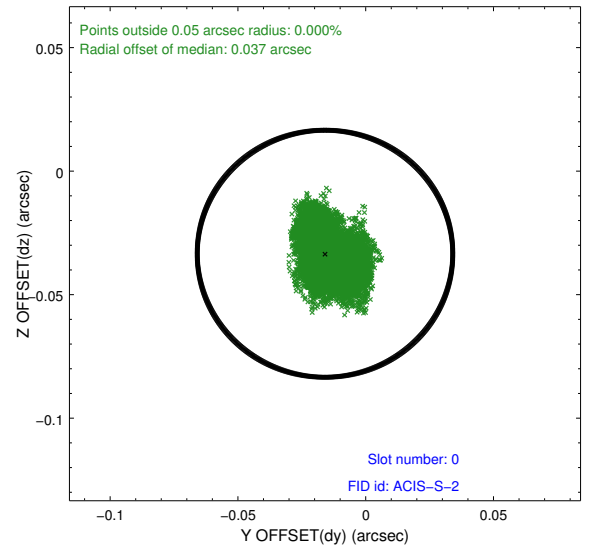
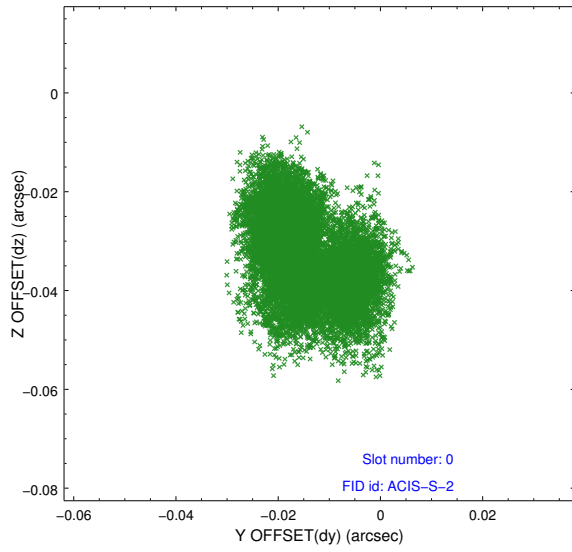


2.4.5 Slot 7

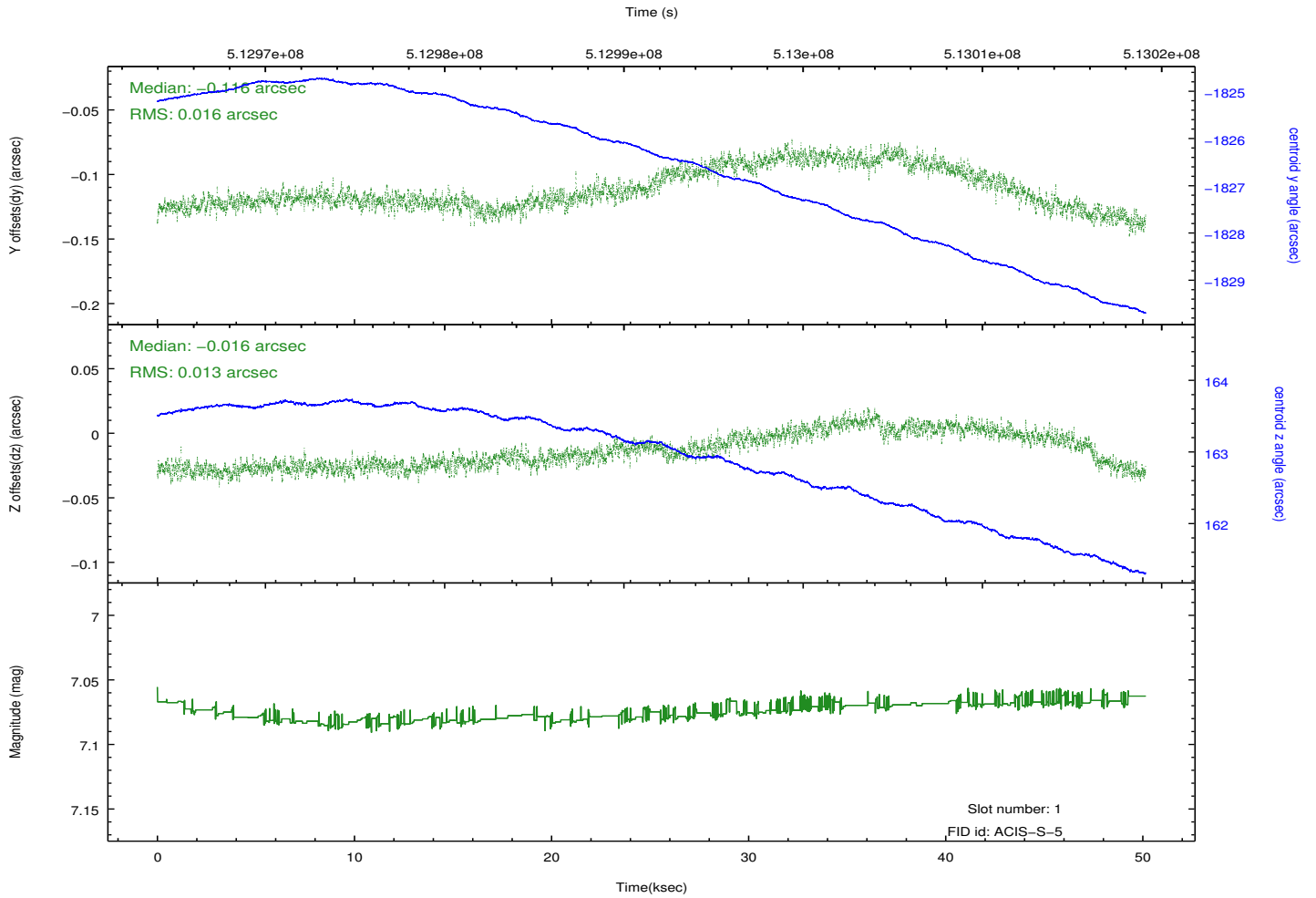
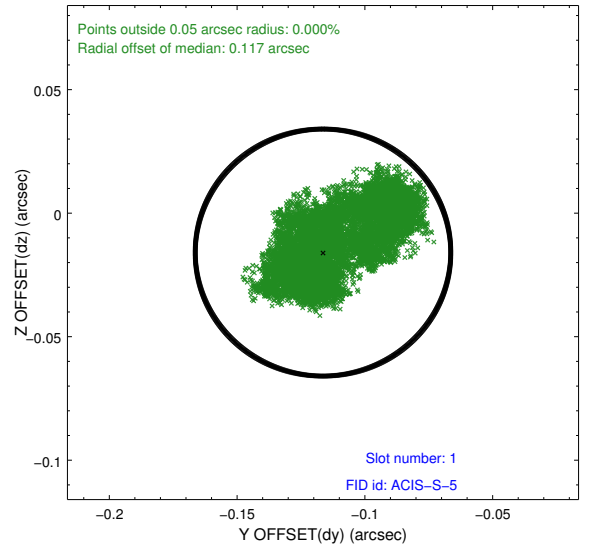
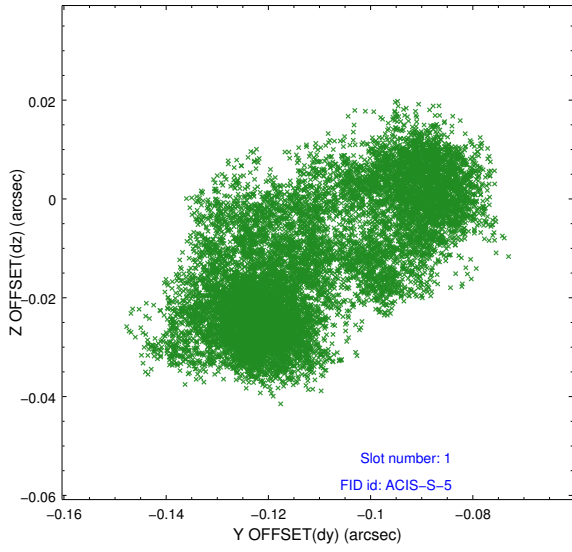


2.5 FID Slots

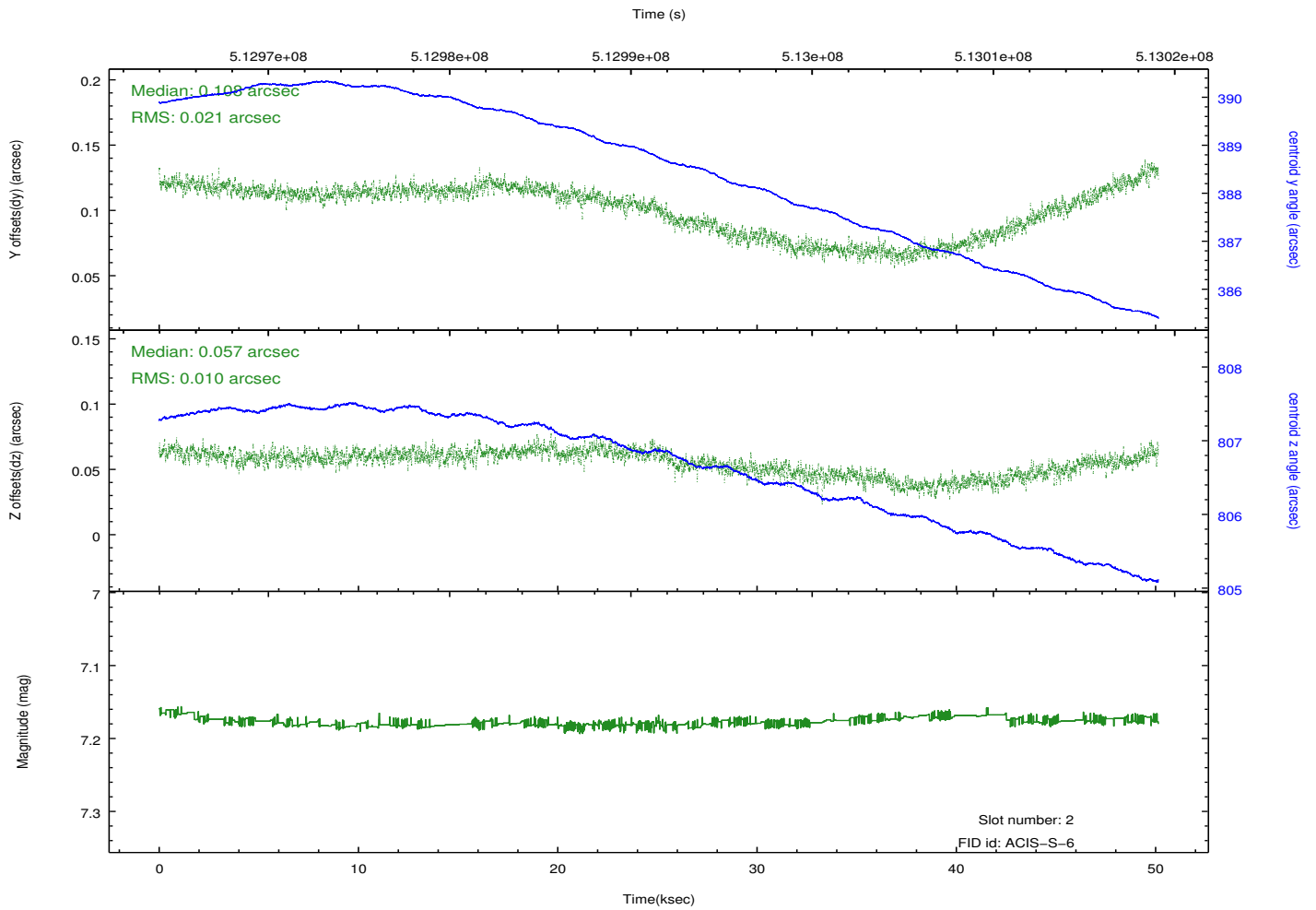
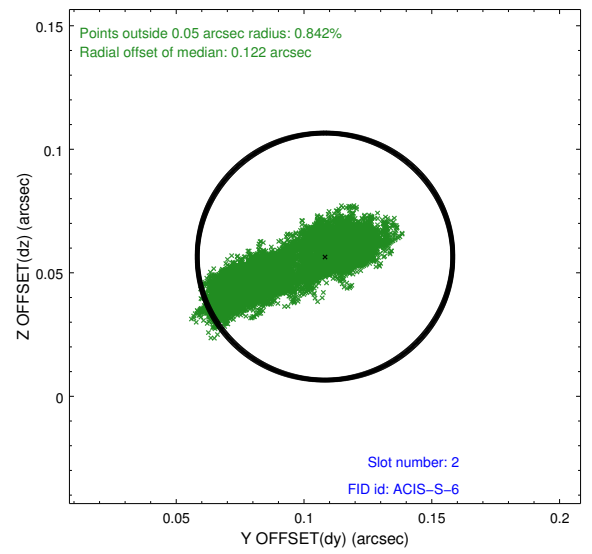
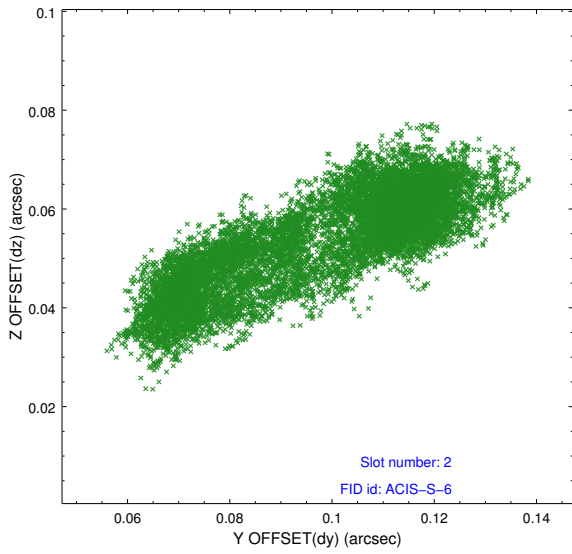
2.5.1 Slot 0



2.5.2 Slot 1



2.5.3 Slot 2



A Summary

A.1 Status

V&V Scientist	Jen Lauer
V&V Date (YYYY-MM-DD)	2014.12.18
V&V Edition	1
V&V Disposition and Status	OK
V&V Charge Time	50.070397015572

A.2 Comments

Joint proposal with NRAO. Observation coordinated with VLA. Window preference met.

=====

These data have been reprocessed with new aspect alignment calibration files that correct small mean offsets (up to 0.4 arcsecs) and improve overall astrometric accuracy. The new calibration was determined using data from the time period being reprocessed and was performed using cross-correlation of X-ray sources with radio and optical counterparts.