

V&V Reference Report

L2 ASCDS Version : 10.2.4

Observation 16462 - L2 Version 1
Chandra X-Ray Center

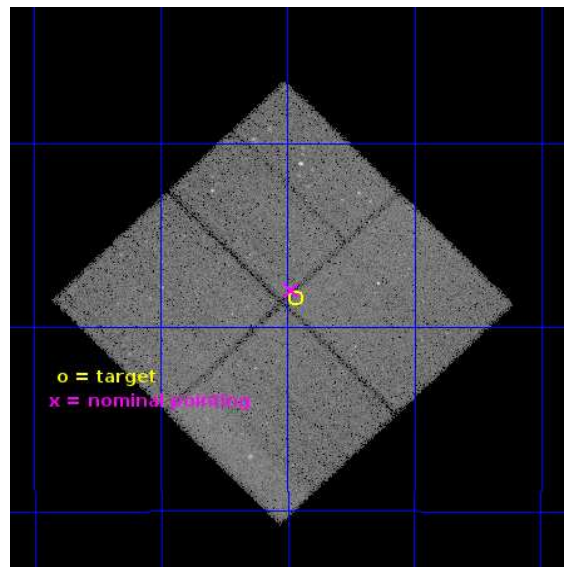
L2 Processing Date : Oct 16 2014

Contents

1	Front	2
2	OBI	3
2.1	OBI	3
2.1.1	Images	3
2.1.2	Bias	3
2.1.3	Parameters	4
2.1.4	Events	4
2.2	Compared Parameters	5
2.3	Aspect	6
2.4	Star Slots	9
2.4.1	Slot 3	9
2.4.2	Slot 4	10
2.4.3	Slot 5	11
2.4.4	Slot 6	12
2.4.5	Slot 7	13
2.5	FID Slots	14
2.5.1	Slot 0	14
2.5.2	Slot 1	15
2.5.3	Slot 2	16
A	Summary	17
A.1	Status	17
A.2	Comments	17

1 Front

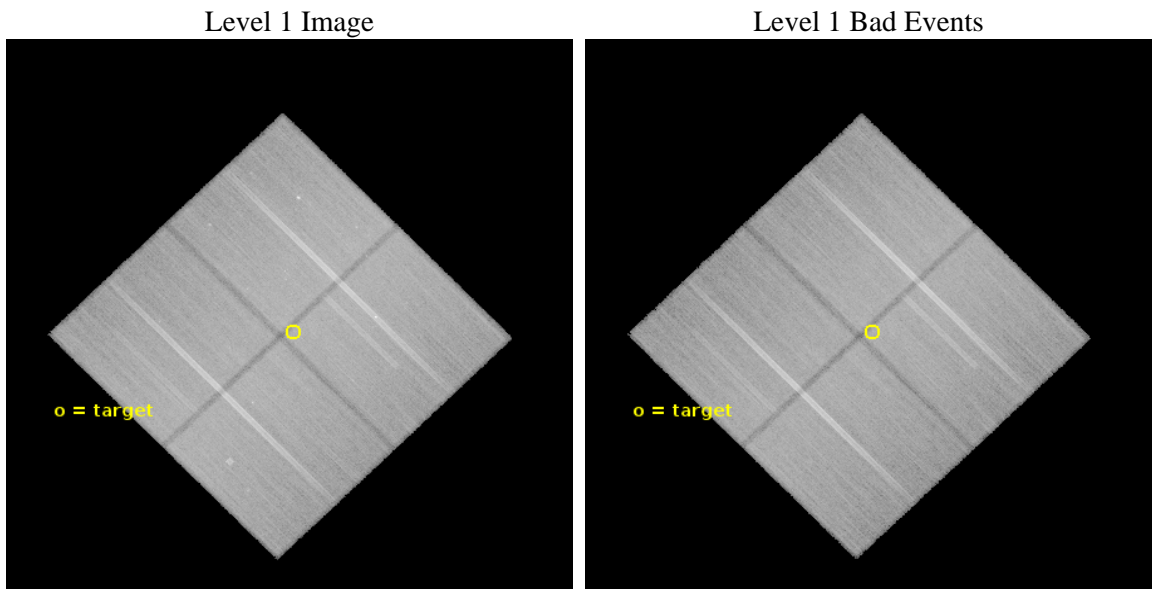
seq_num	901115	Sequence number
obs_id	16462	Observation id
title	The Chandra Deep Field-South: A Peerless Ultradeep Survey for Exploring the Distant X-ray Universe	Proposal title
observer	Prof. W.N. Brandt	Principal investigator
object	Chandra Deep Field-South	Source name
dtcycle	0	
cycle	P	events from which exps? Prim/Second/Both
ra_targ	53.117083	Observer's specified target RA [deg]
dec_targ	-27.807333	Observer's specified target Dec [deg]
ra_nom	53.121285218313	Nominal RA [deg]
dec_nom	-27.800037434314	Nominal Dec [deg]
roll_nom	45.610649280825	Nominal Roll [deg]
revision	1	Processing version of data
ontime	145816.99777657	Sum of GTIs [s]
livetime	143911.79135171	Livetime [s]
ontime0	145820.01568693	Sum of GTIs [s]
ontime1	145820.05674672	Sum of GTIs [s]
ontime2	145807.53368545	Sum of GTIs [s]
ontime3	145816.99777657	Sum of GTIs [s]
l2events	303660	Number of level 2 events



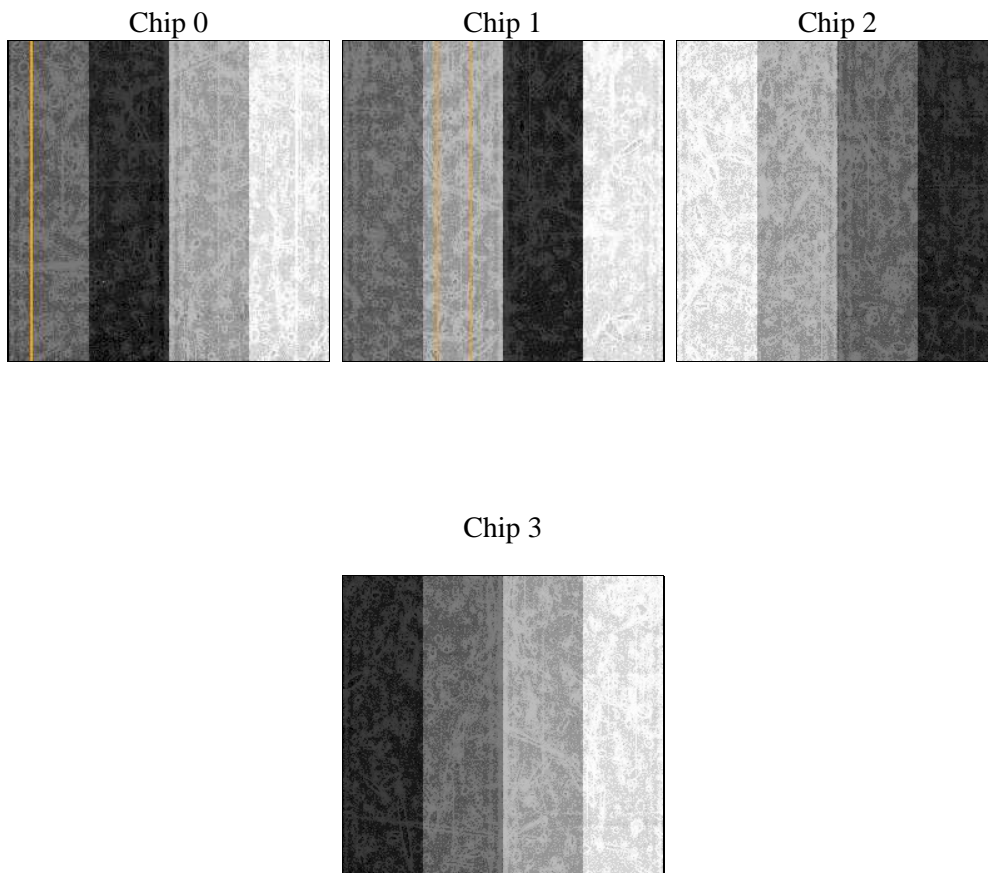
2 OBI

2.1 OBI

2.1.1 Images



2.1.2 Bias



2.1.3 Parameters

obi_num	0	Obi number	sched_exp_time	145734.467000	[s] Scheduled observation exposure time
ascdsver	10.2.4	Processing system revision	ontime	145816.99777657	Sum of GTIs [s]
caldsver	4.6.3	 	ontime0	145820.01568693	Sum of GTIs [s]
date	2014-10-16T15:34:11	Date and time of file creation	ontime1	145820.05674672	Sum of GTIs [s]
revision	1	Processing version of data	ontime2	145807.53368545	Sum of GTIs [s]
			ontime3	145816.99777657	Sum of GTIs [s]
			l1events	2904399	Number of level 1 events

2.1.4 Events

	ccd 0	ccd 1	ccd 2	ccd 3
level 1 events	694173	707574	761668	740984
rejected events	605120	608758	672038	655636
rejected %	87%	86%	88%	88%

	ccd 0	ccd 1	ccd 2	ccd 3
grade 0 events	29788	33910	32142	29217
	4%	4%	4%	3%
grade 1 events	410	417	425	439
	0%	0%	0%	0%
grade 2 events	22193	23976	21858	19336
	3%	3%	2%	2%
grade 3 events	9400	9527	8866	9071
	1%	1%	1%	1%
grade 4 events	8592	9603	9006	9194
	1%	1%	1%	1%
grade 5 events	35501	37582	33323	40432
	5%	5%	4%	5%
grade 6 events	19085	21803	17763	18534
	2%	3%	2%	2%
grade 7 events	569204	570756	638285	614761
	81%	80%	83%	82%

2.2 Compared Parameters

Parameter	Planned	Actual	Parameter	Planned	Actual
Instrument	ACIS	ACIS	Obspar format version number	7	7
Detector	ACIS-0123	ACIS-0123	Obspar file type	PREDICTED	ACTUAL
Grating	NONE	NONE	Obspar update status	NONE	UPDATED
Data mode	VFAINT	VFAINT	Number of optional ACIS chips dropped	0	0
Observation mode	POINTING	POINTING	On-chip summing requested	N	N
[deg] Pointing RA	53.113638	53.1212852183132	Subarray requested	NONE	NONE
[deg] Pointing Dec	-27.826800	-27.8000374343137	Alternating exposures requested	N	N
[deg] Pointing Roll	45.398388	45.6106492808254	[s] Primary exposure time	0.000000	3.1
[mm] SIM focus pos	-0.782348	-0.7809083437167272			
[mm] SIM defocus	0	0.001439871863259334			
[mm] SIM translation stage pos	-233.592463	-233.5874344608287			
[mm] SIM translation stage offset	0	-0.005018542100998502			
[s] Observation start time (MET)	529682307.184000	529681255.7622			
Observation start date	2014-10-14T13:57:20	2014-10-14T13:40:55			
[s] Observation end time (MET)	529828042.184000	529828278.69537			
Observation end date	2014-10-16T06:26:15	2014-10-16T06:31:18			
Read mode	TIMED	TIMED			

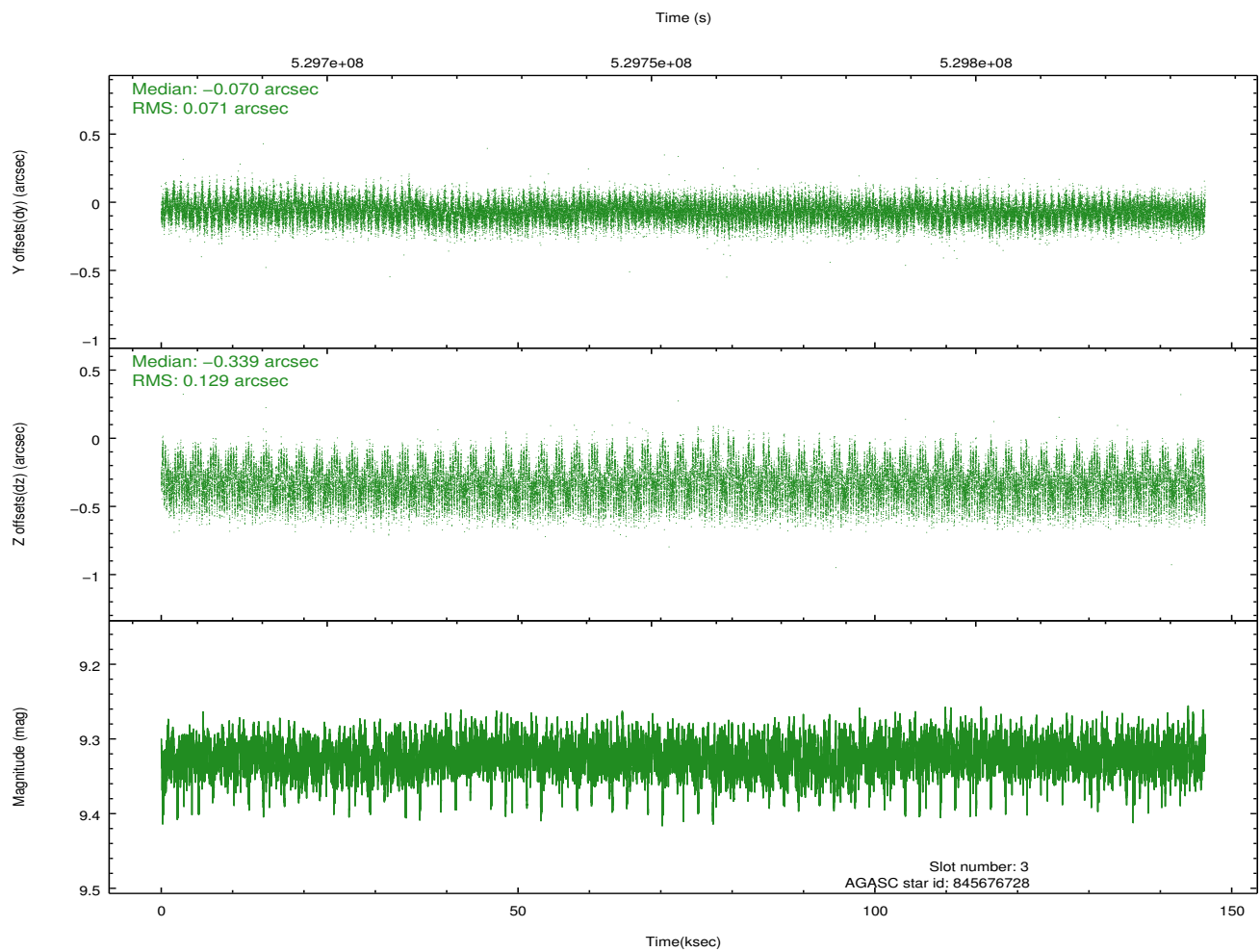
2.3 Aspect

Slot Statistics

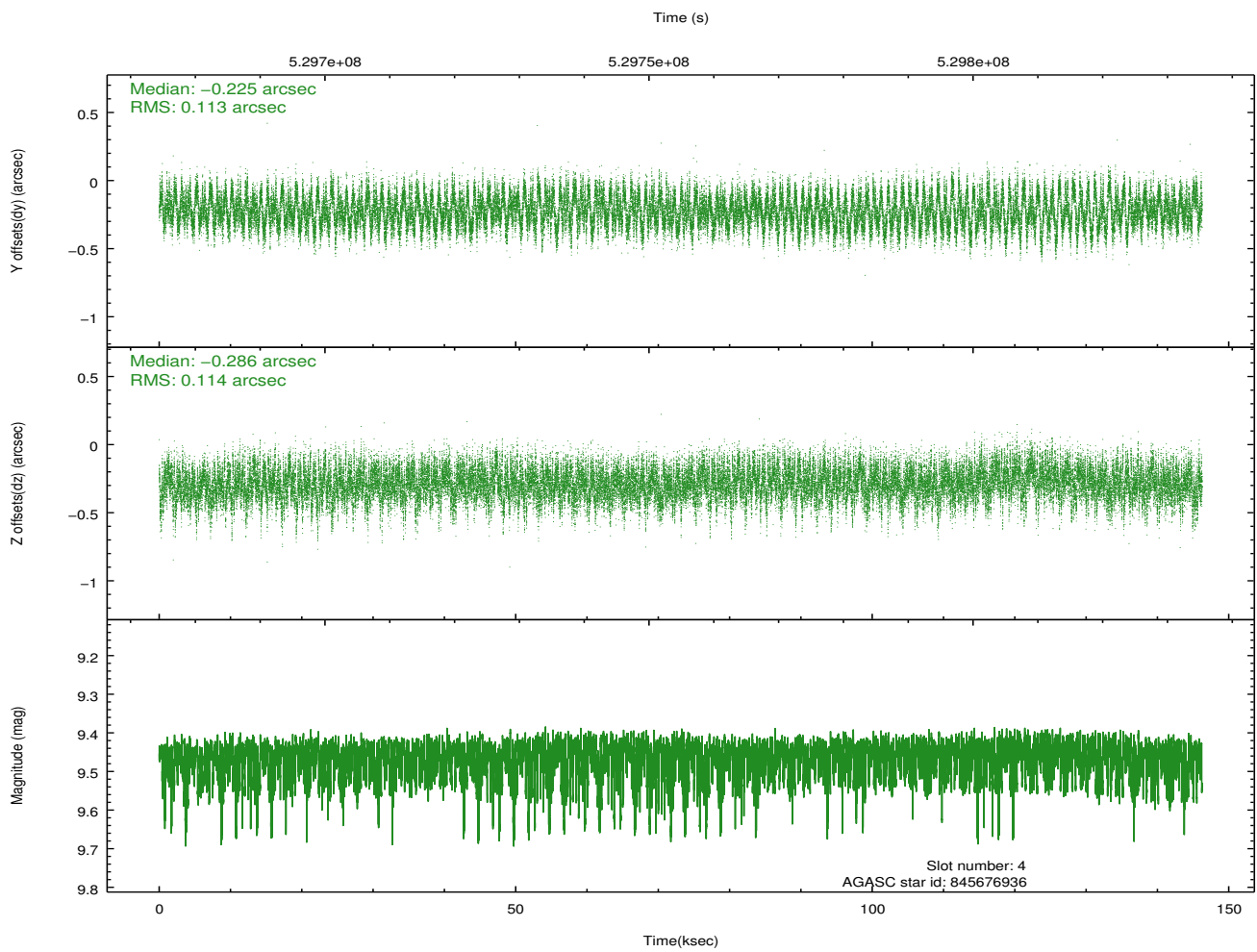
slot	status	id	mag	n_pts	med_dy	med_dz	dr1	dr2	ra	dec	mean_y	mean_z
0	FID	ACIS-I-1	7.18	35675	-0.028	-0.064	0.010	0.019	0.000000	0.000000	913.57	-844.64
1	FID	ACIS-I-4	7.14	35675	0.318	0.082	0.011	0.022	0.000000	0.000000	2133.83	1055.41
2	FID	ACIS-I-5	7.16	35673	-0.388	0.053	0.009	0.019	0.000000	0.000000	-1834.99	1052.97
3	GUIDE	845676728	9.32	71288	-0.070	-0.339	0.158	0.255	52.877179	-27.664318	-113.16	946.98
4	GUIDE	845676936	9.46	71195	-0.225	-0.286	0.173	0.272	52.843773	-27.880153	-739.70	475.56
5	GUIDE	845807880	8.78	71311	-0.194	-0.060	0.106	0.171	53.382027	-27.886093	447.42	-758.27
6	GUIDE	845816344	9.21	71301	0.513	0.648	0.141	0.223	53.137522	-28.675689	-2121.64	-2199.03
7	GUIDE	845807840	9.46	71172	-0.026	0.025	0.176	0.304	54.104867	-27.888625	2048.18	-2411.59

2.4 Star Slots

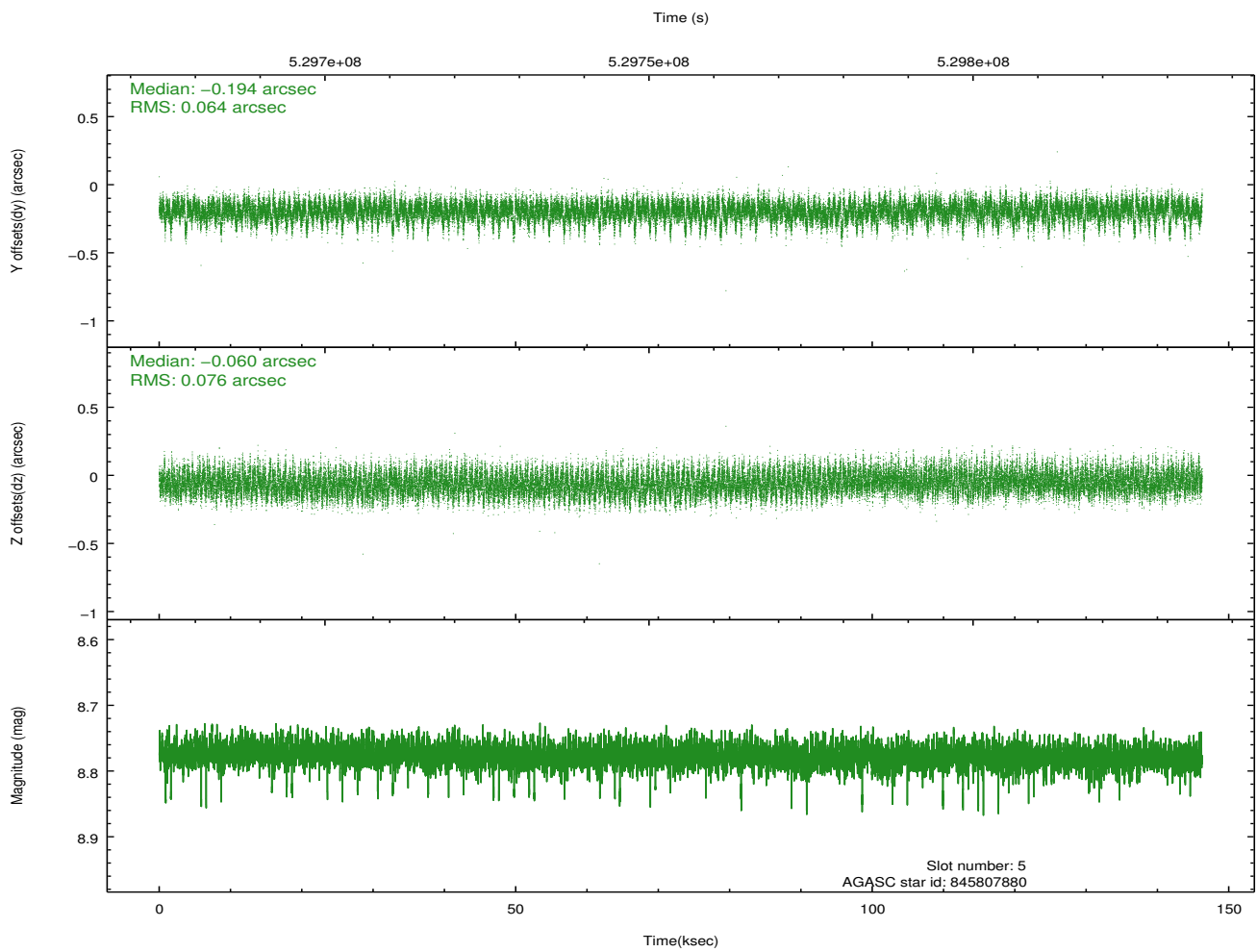
2.4.1 Slot 3



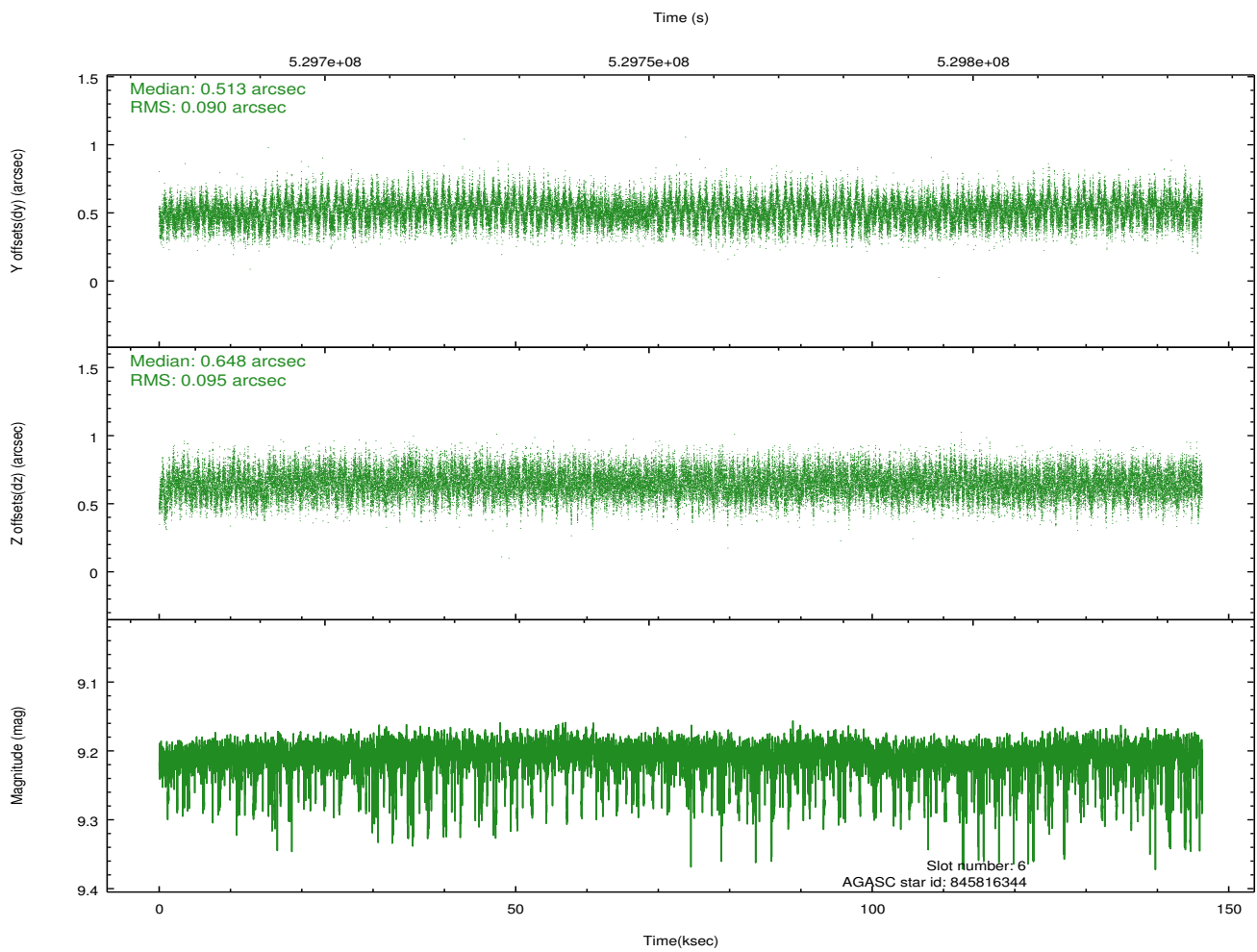
2.4.2 Slot 4



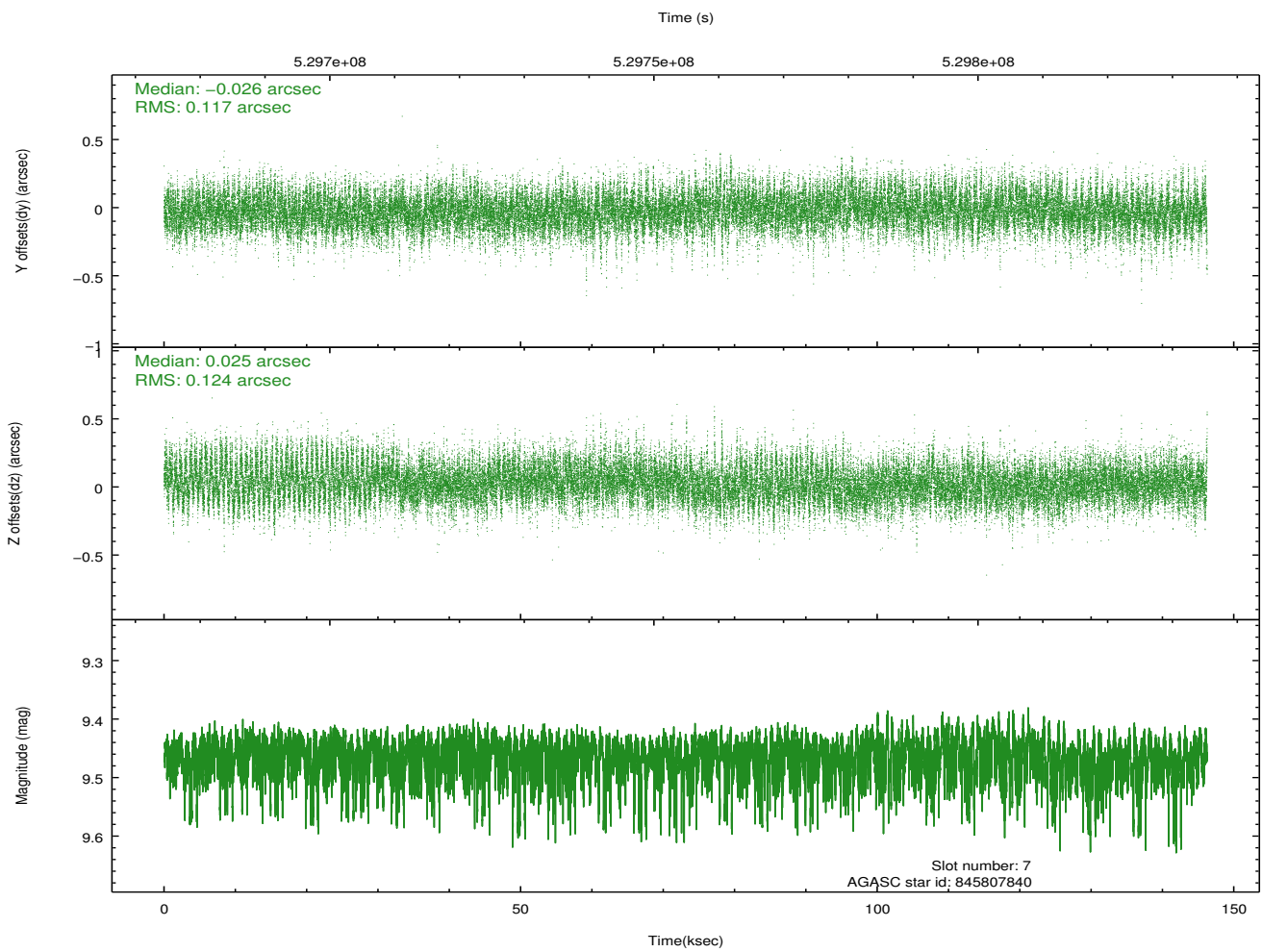
2.4.3 Slot 5



2.4.4 Slot 6

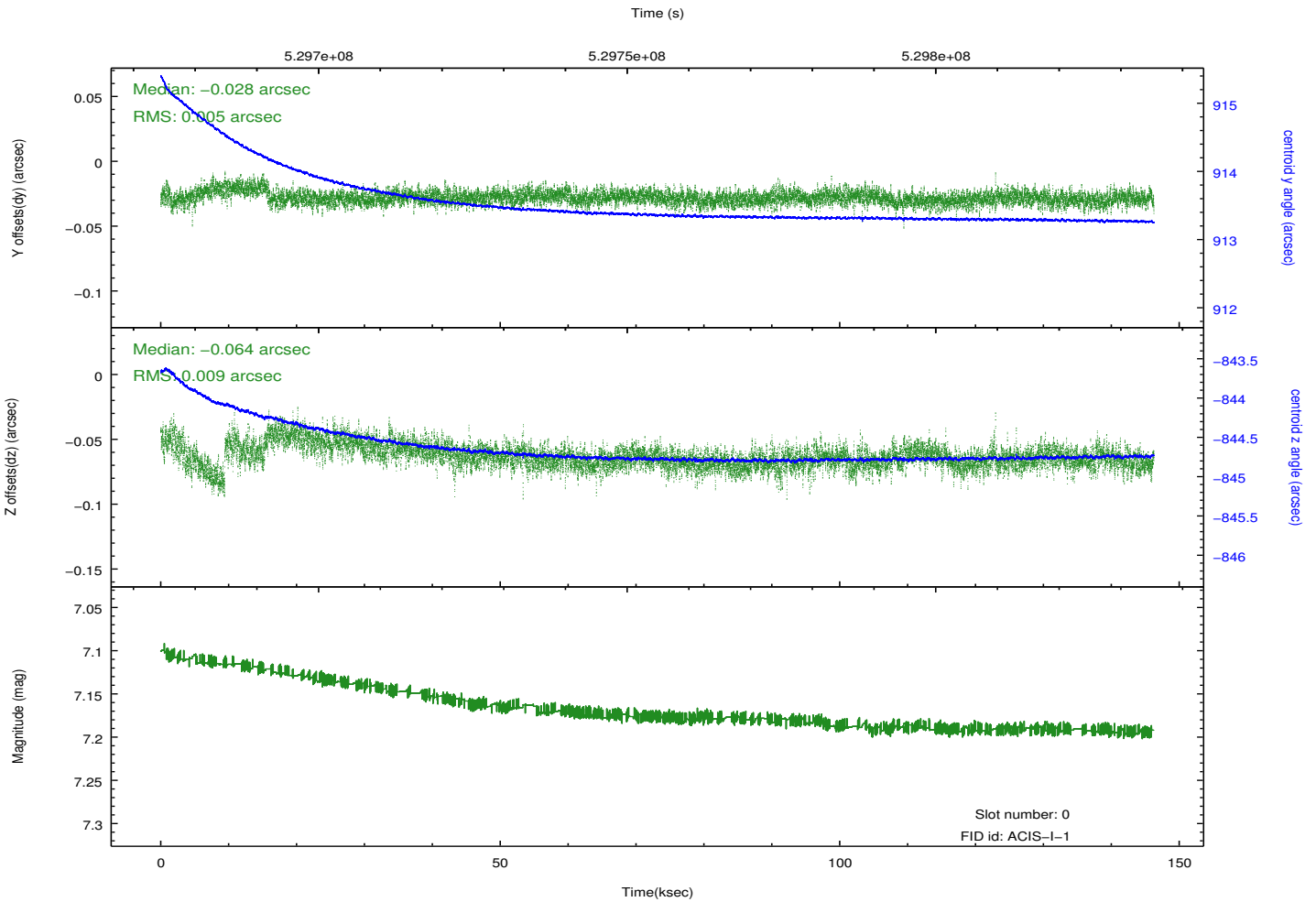
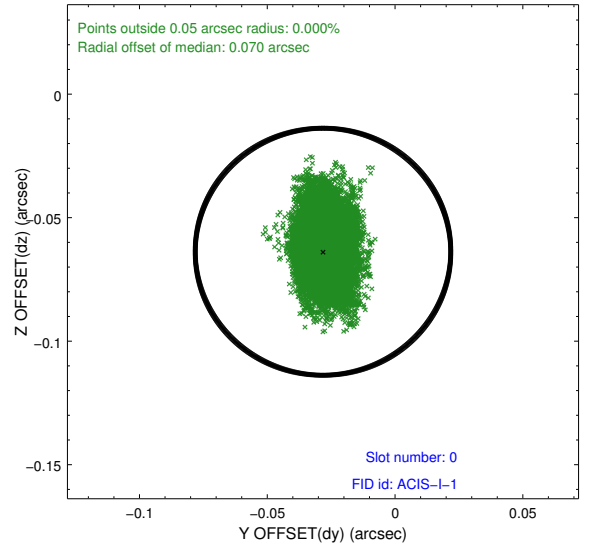
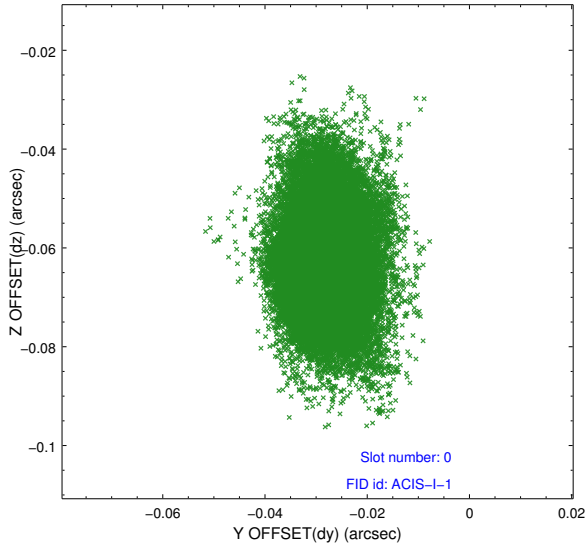


2.4.5 Slot 7

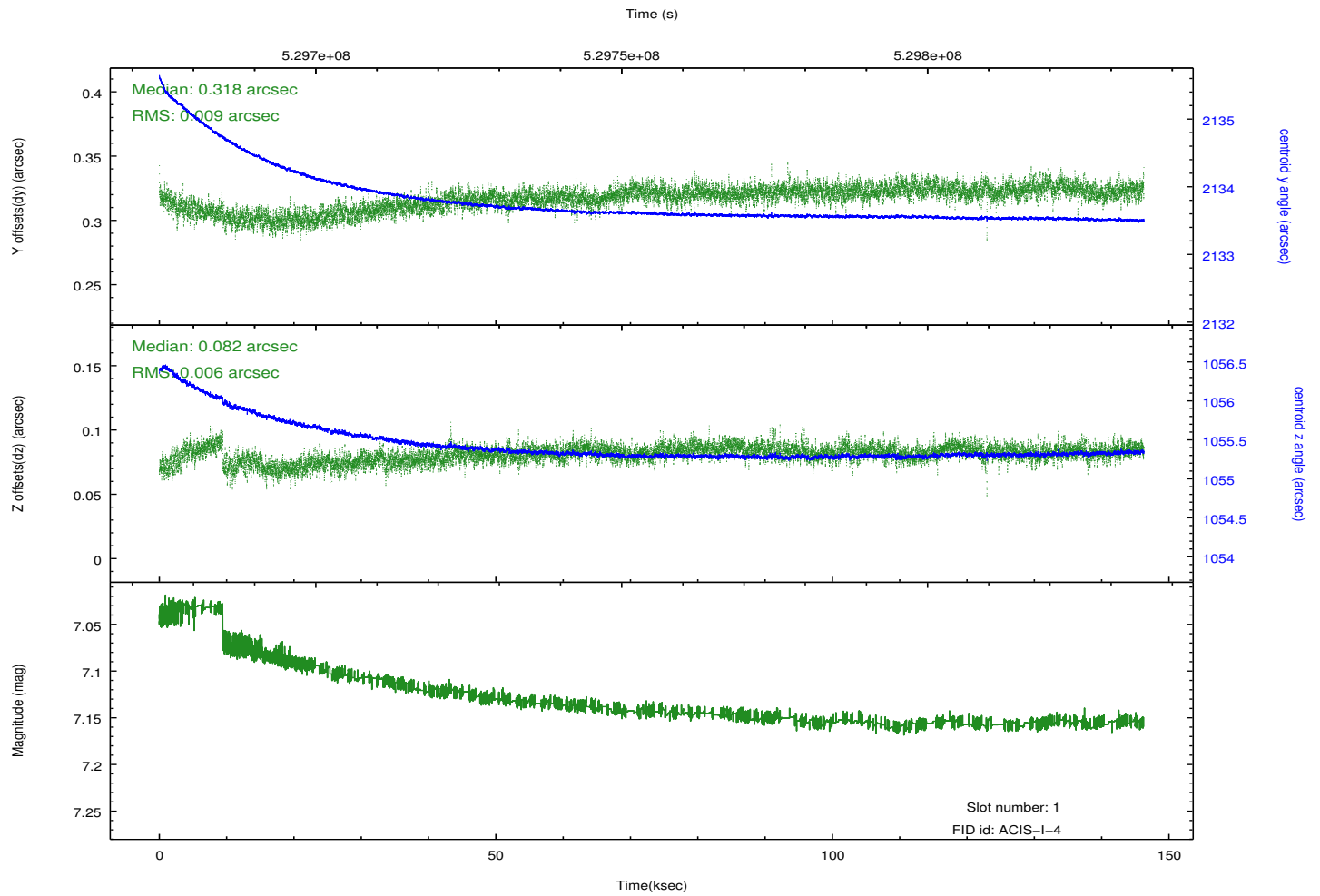
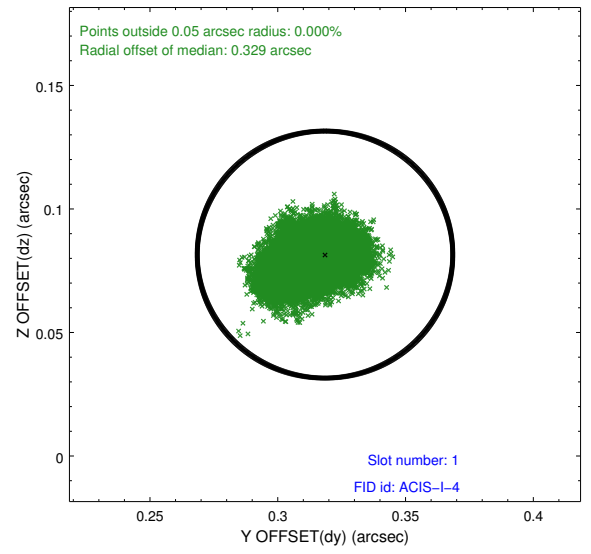
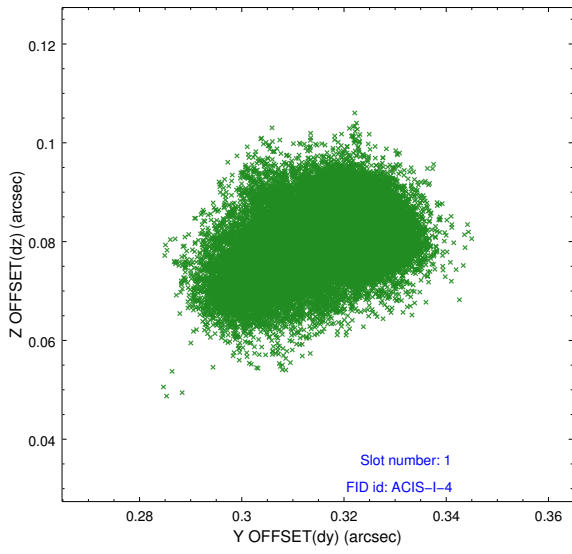


2.5 FID Slots

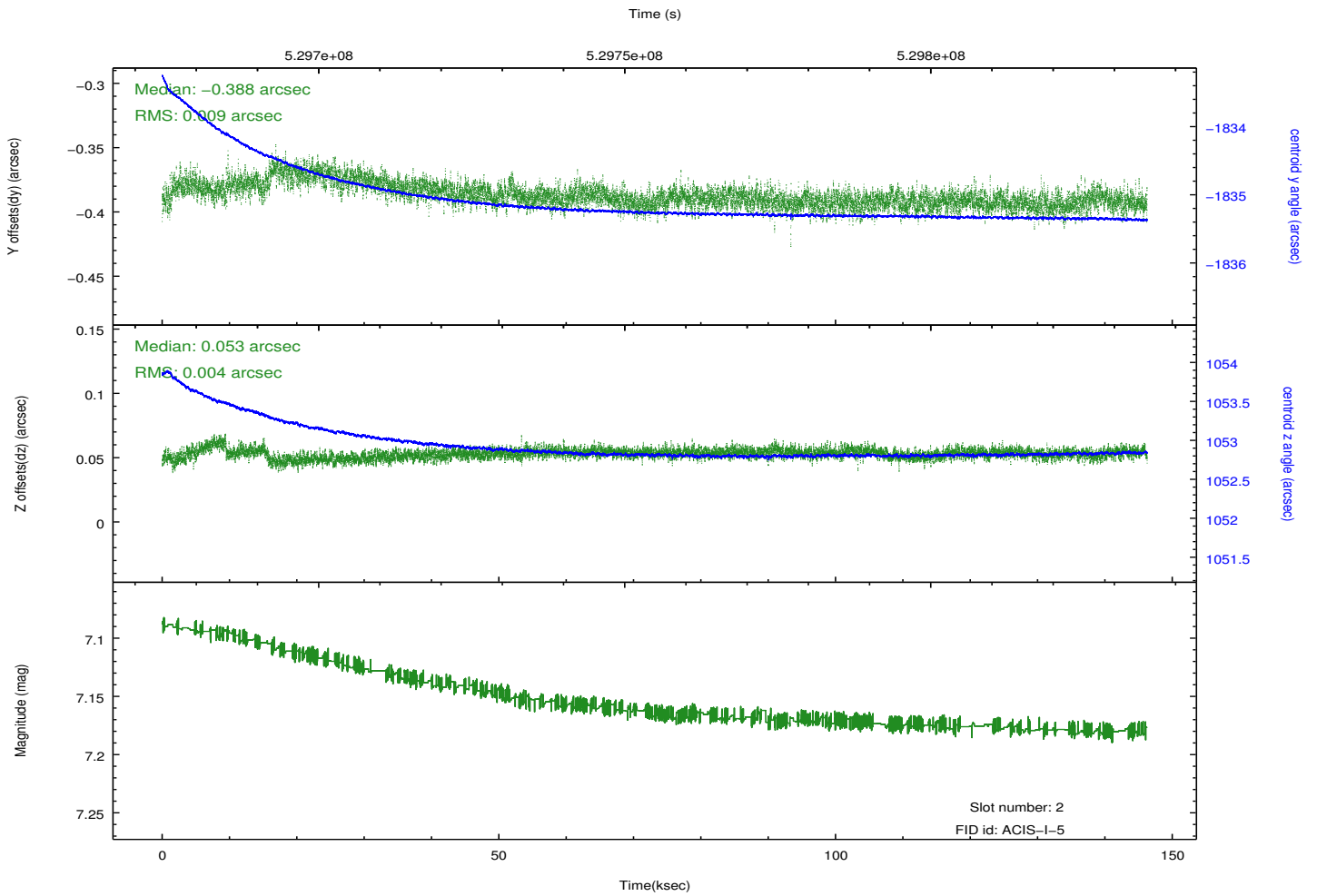
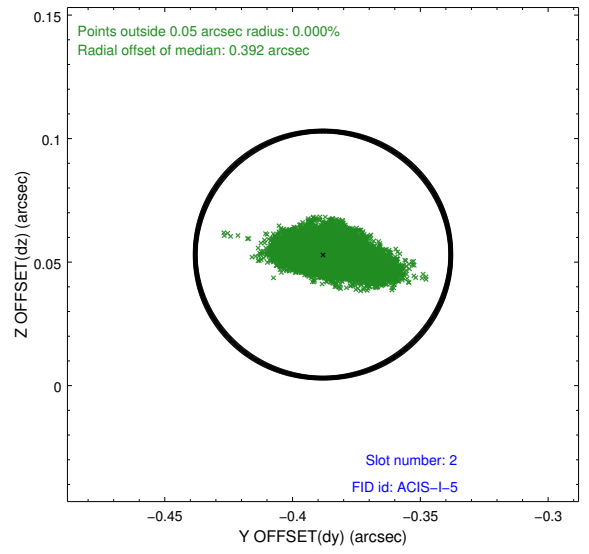
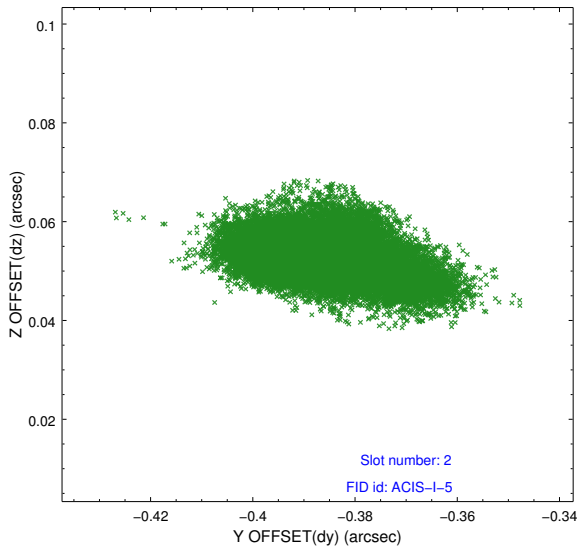
2.5.1 Slot 0



2.5.2 Slot 1



2.5.3 Slot 2



A Summary

A.1 Status

V&V Scientist	Beth Sundheim
V&V Date (YYYY-MM-DD)	2014.10.16
V&V Edition	1
V&V Disposition and Status	OK
V&V Charge Time	145.81699777657

A.2 Comments