

V&V Reference Report

L2 ASCDS Version : 10.3.1

Observation 17572 - L2 Version 1
Chandra X-Ray Center

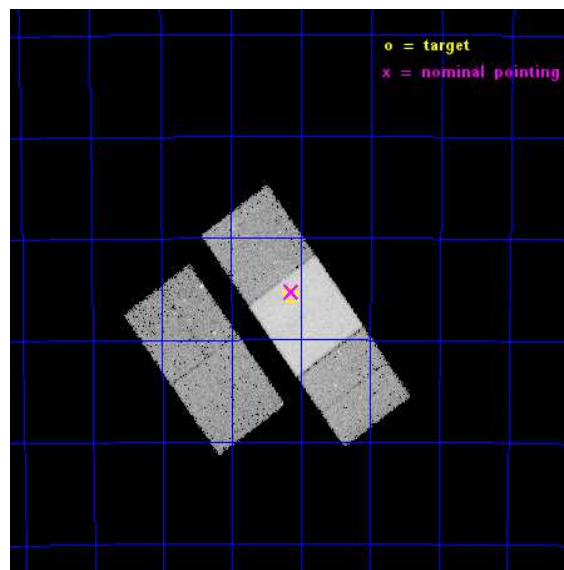
L2 Processing Date : Jan 3 2015

Contents

1	Front	2
2	OBI	3
2.1	OBI	3
2.1.1	Images	3
2.1.2	Bias	3
2.1.3	Parameters	4
2.1.4	Events	4
2.2	Compared Parameters	5
2.3	Aspect	6
2.4	Star Slots	9
2.4.1	Slot 3	9
2.4.2	Slot 4	10
2.4.3	Slot 5	11
2.4.4	Slot 6	12
2.4.5	Slot 7	13
2.5	FID Slots	14
2.5.1	Slot 0	14
2.5.2	Slot 1	15
2.5.3	Slot 2	16
A	Summary	17
A.1	Status	17
A.2	Comments	17

1 Front

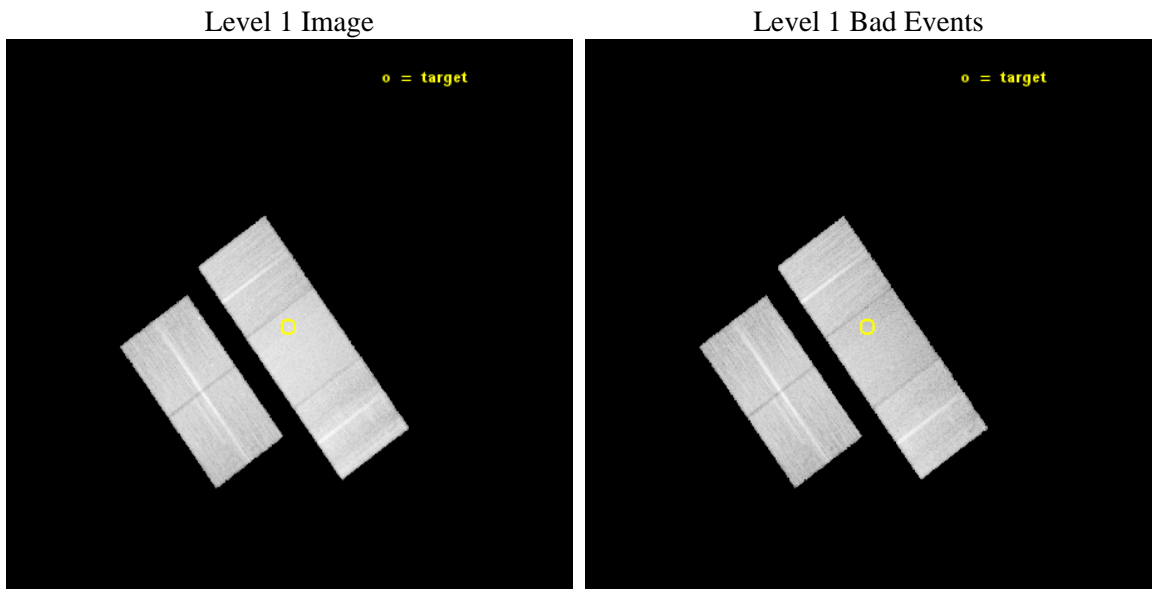
seq_num	502199	Sequence number
obs_id	17572	Observation id
title	DEEP CHANDRA IMAGING OF THE GAMMA-RAY ONLY PULSAR PSR J1135-6055 AND ITS BENT JETS	Proposal title
observer	Dr. Andrea De Luca	Principal investigator
object	PSR J1135-6055	Source name
dtcycle	0	
cycle	P	events from which exps? Prim/Second/Both
ra_targ	173.784583	Observer's specified target RA [deg]
dec_targ	-60.926806	Observer's specified target Dec [deg]
ra_nom	173.78399320286	Nominal RA [deg]
dec_nom	-60.921376049809	Nominal Dec [deg]
roll_nom	54.156110597105	Nominal Roll [deg]
revision	1	Processing version of data
ontime	36207.052297413	Sum of GTIs [s]
livetime	35733.980503904	Livetime [s]
ontime2	36206.8881374	Sum of GTIs [s]
ontime3	36197.547226369	Sum of GTIs [s]
ontime6	36203.870297015	Sum of GTIs [s]
ontime7	36207.052297413	Sum of GTIs [s]
ontime8	36206.929177403	Sum of GTIs [s]
l2events	180290	Number of level 2 events



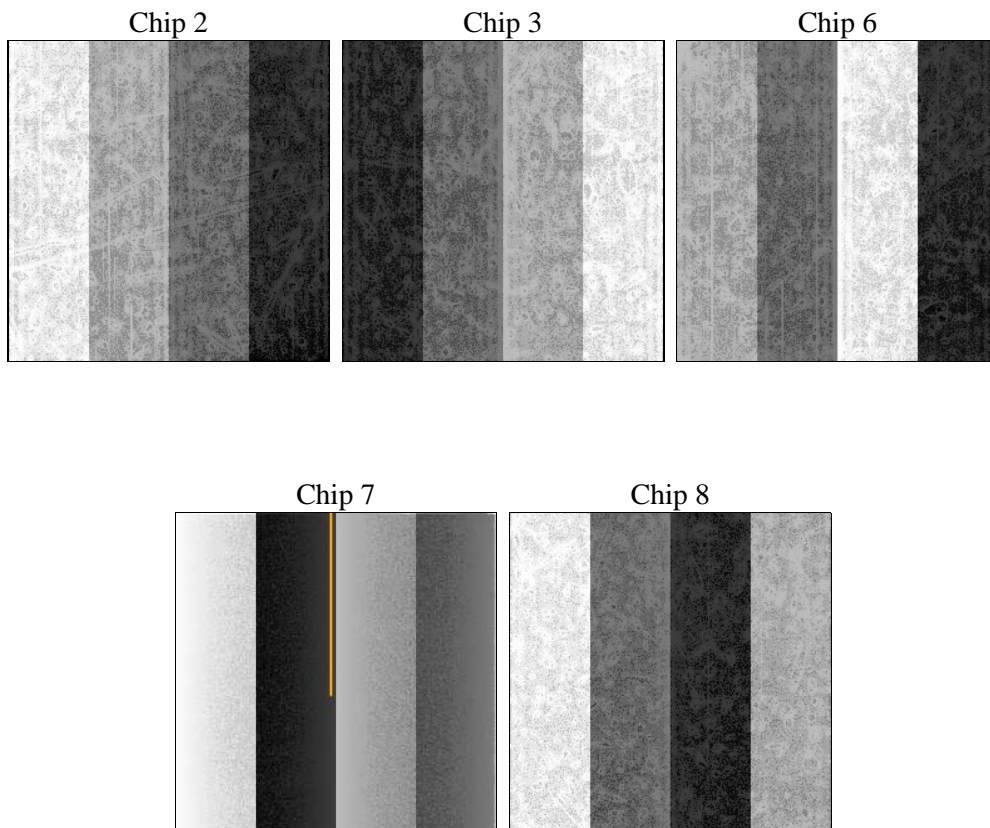
2 OBI

2.1 OBI

2.1.1 Images



2.1.2 Bias



2.1.3 Parameters

obi_num	0	Obi number	sched_exp_time	36141.562000	[s] Scheduled observation exposure time
ascdsver	10.3.1	Processing system revision	ontime	36207.052297413	Sum of GTIs [s]
caldbver	4.6.5	 	ontime2	36206.8881374	Sum of GTIs [s]
date	2015-01-03T20:04:49	Date and time of file creation	ontime3	36197.547226369	Sum of GTIs [s]
revision	1	Processing version of data	ontime6	36203.870297015	Sum of GTIs [s]
			ontime7	36207.052297413	Sum of GTIs [s]
			ontime8	36206.929177403	Sum of GTIs [s]
			l1events	963111	Number of level 1 events

2.1.4 Events

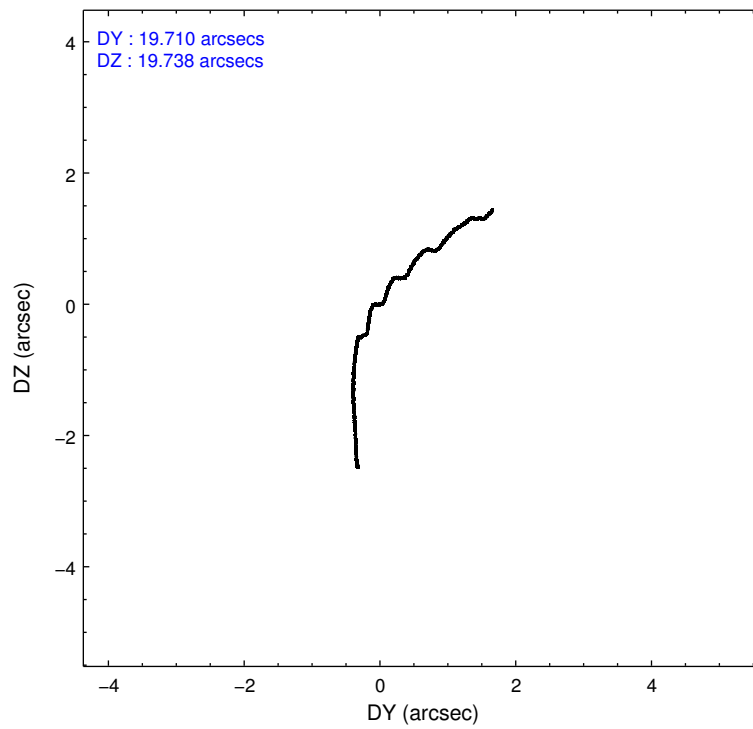
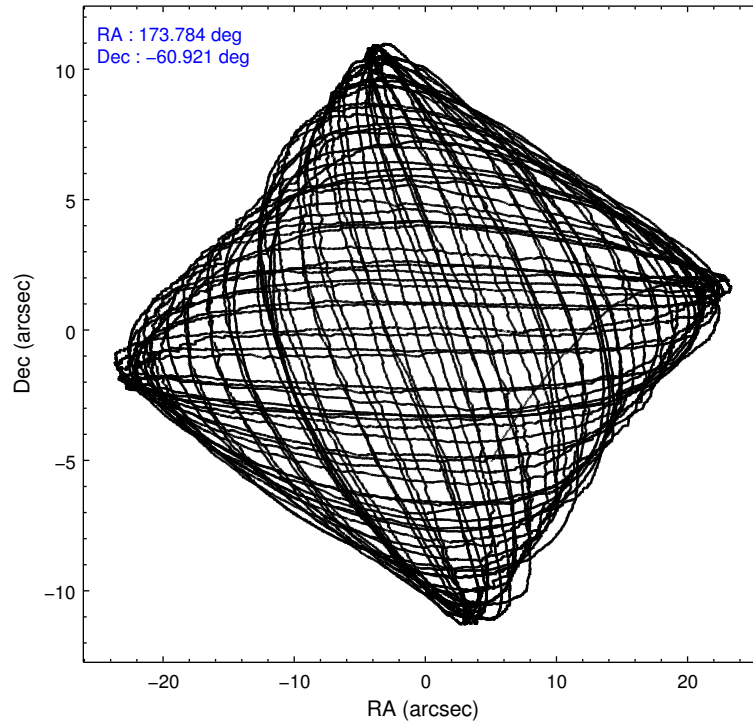
	ccd 2	ccd 3	ccd 6	ccd 7	ccd 8
level 1 events	165075	162238	177793	236724	221281
rejected events	145011	143094	154364	130735	162537
rejected %	87%	88%	86%	55%	73%

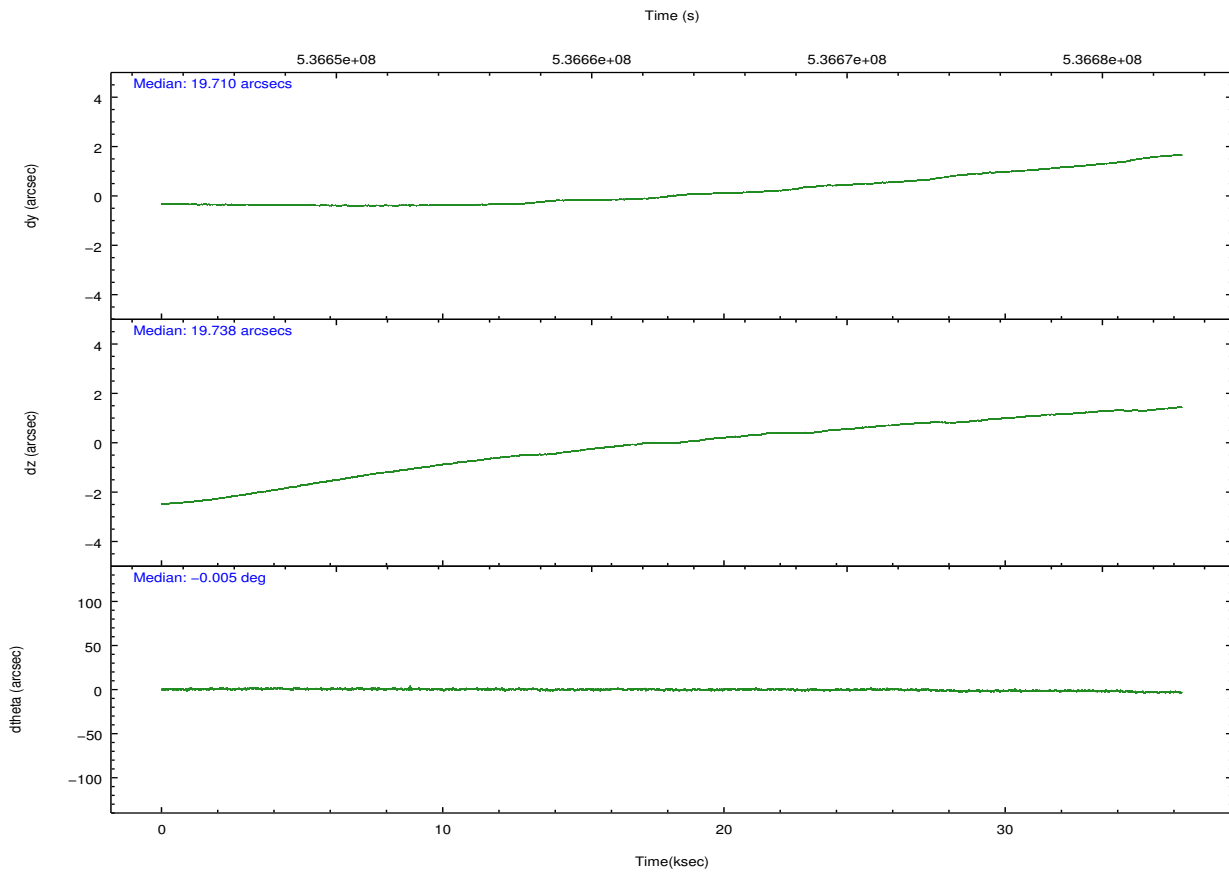
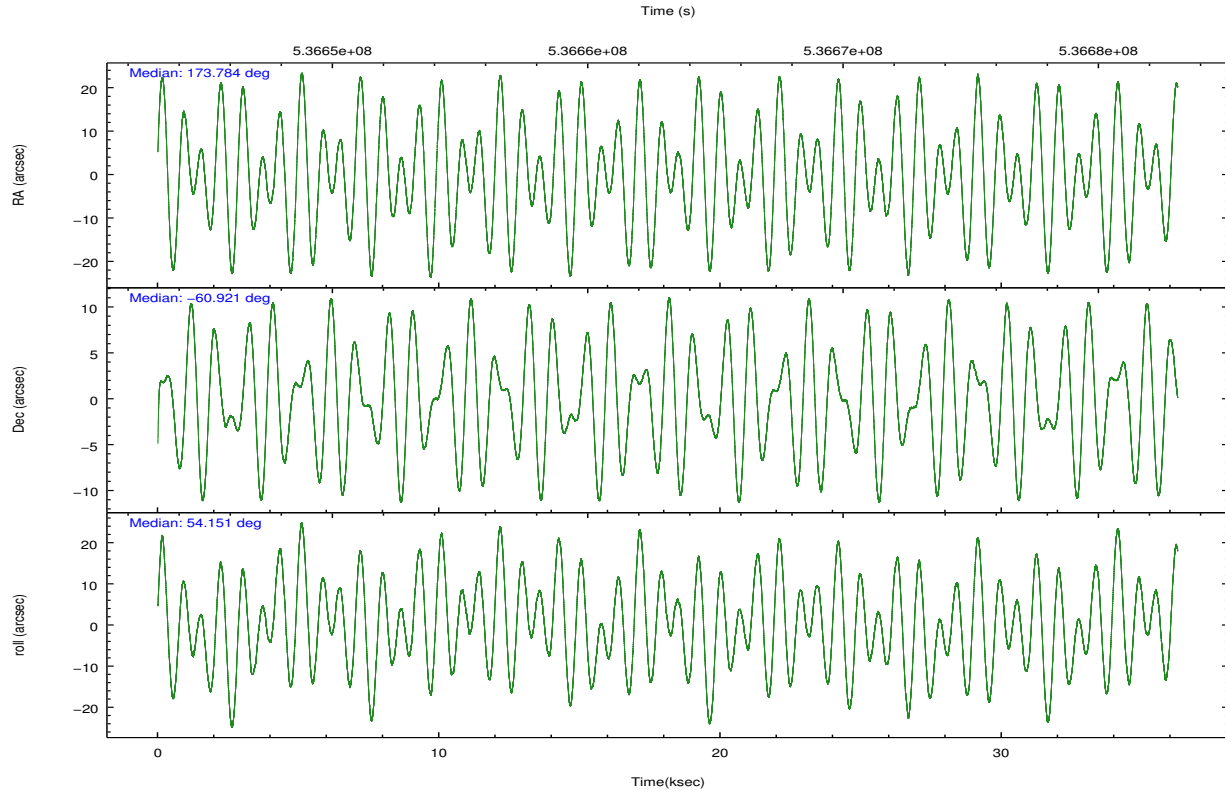
	ccd 2	ccd 3	ccd 6	ccd 7	ccd 8
grade 0 events	7756	6975	9205	10279	17536
	4%	4%	5%	4%	7%
grade 1 events	91	96	81	283	159
	0%	0%	0%	0%	0%
grade 2 events	4599	4104	5145	22556	13849
	2%	2%	2%	9%	6%
grade 3 events	1958	2004	2125	8886	6010
	1%	1%	1%	3%	2%
grade 4 events	1997	2041	2027	8783	5727
	1%	1%	1%	3%	2%
grade 5 events	7306	8938	8864	23026	12583
	4%	5%	4%	9%	5%
grade 6 events	3757	4022	4930	55503	15633
	2%	2%	2%	23%	7%
grade 7 events	137611	134058	145416	107408	149784
	83%	82%	81%	45%	67%

2.2 Compared Parameters

Parameter	Planned	Actual	Parameter	Planned	Actual
Instrument	ACIS	ACIS	Obspar format version number	7	7
Detector	ACIS-23678	ACIS-23678	Obspar file type	PREDICTED	ACTUAL
Grating	NONE	NONE	Obspar update status	NONE	UPDATED
Data mode	VFAINT	VFAINT	CCD I0 on	N	N
Observation mode	POINTING	POINTING	CCD I1 on	N	N
[deg] Pointing RA	173.778965	173.7839932028589	CCD I2 on	O1	Y
[deg] Pointing Dec	-60.948717	-60.92137604980873	CCD I3 on	Y	Y
[deg] Pointing Roll	53.995087	54.15611059710498	CCD S0 on	N	N
[mm] SIM focus pos	-0.684267	-0.6828225247311905	CCD S1 on	N	N
[mm] SIM defocus	0	0.001444936568705701	CCD S2 on	Y	Y
[mm] SIM translation stage pos	-190.132523	-190.1425803651734	CCD S3 on	Y	Y
[mm] SIM translation stage offset	0	0.01005778216563158	CCD S4 on	Y	Y
[s] Observation start time (MET)	536645126.184000	536643519.96233	CCD S5 on	N	N
Observation start date	2015-01-03T04:04:19	2015-01-03T03:38:39	Number of optional ACIS chips dropped	0	0
[s] Observation end time (MET)	536681267.184000	536681492.62694	On-chip summing requested	N	N
Observation end date	2015-01-03T14:06:40	2015-01-03T14:11:32	Subarray requested	NONE	NONE
Read mode	TIMED	TIMED	Alternating exposures requested	N	N
			[s] Primary exposure time	0.000000	3.1

2.3 Aspect





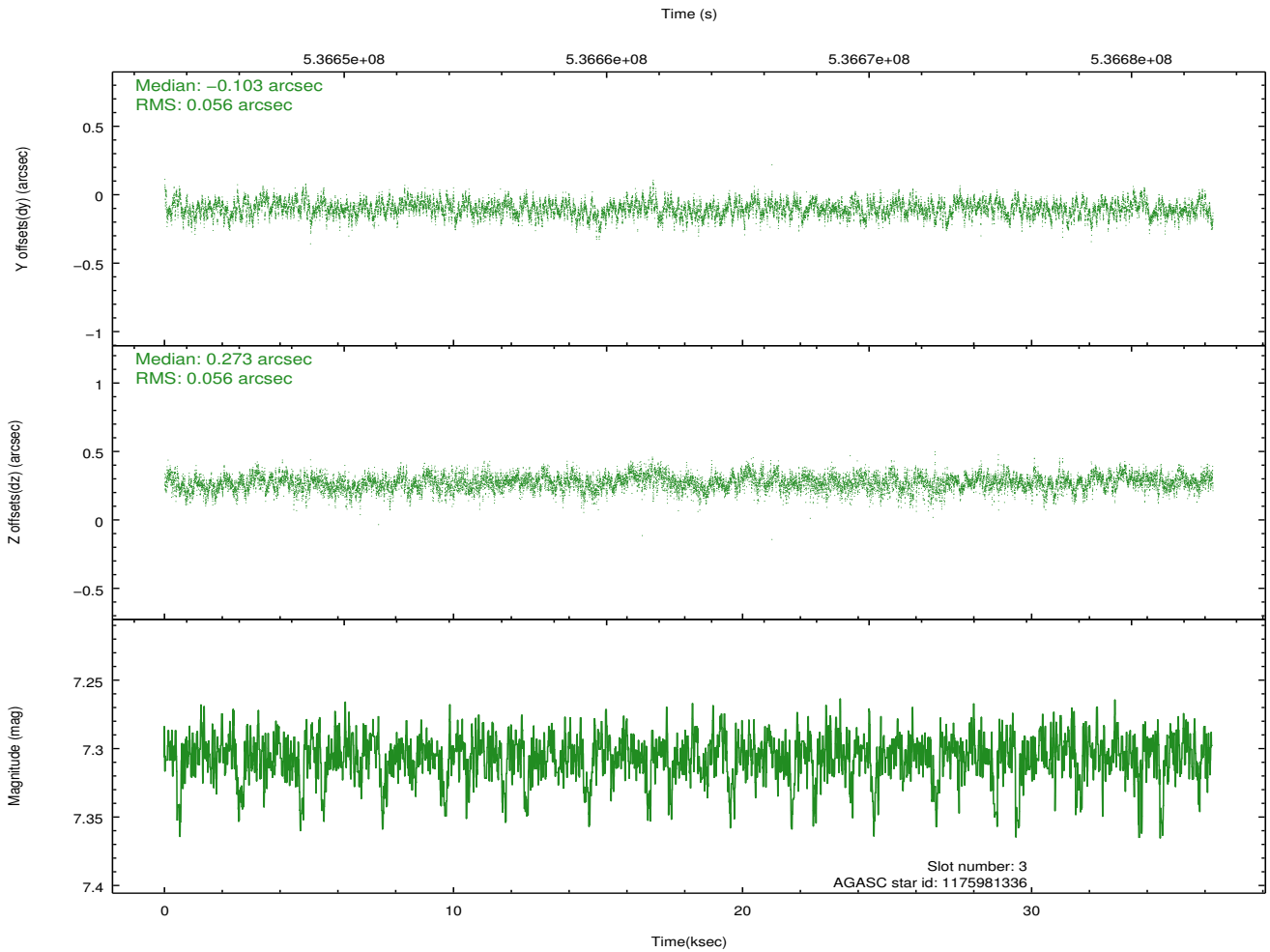
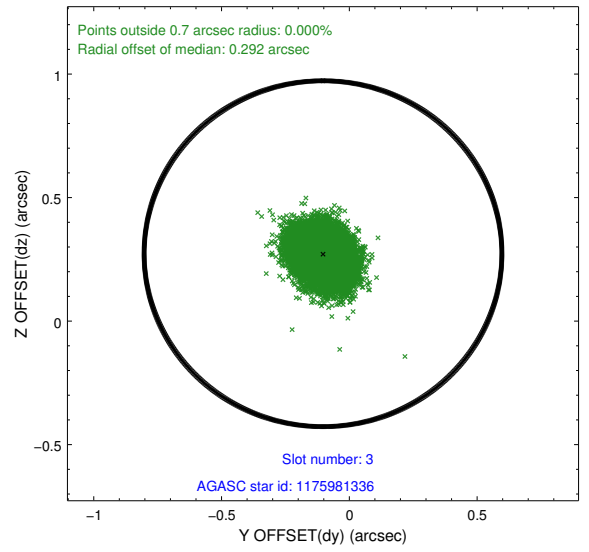
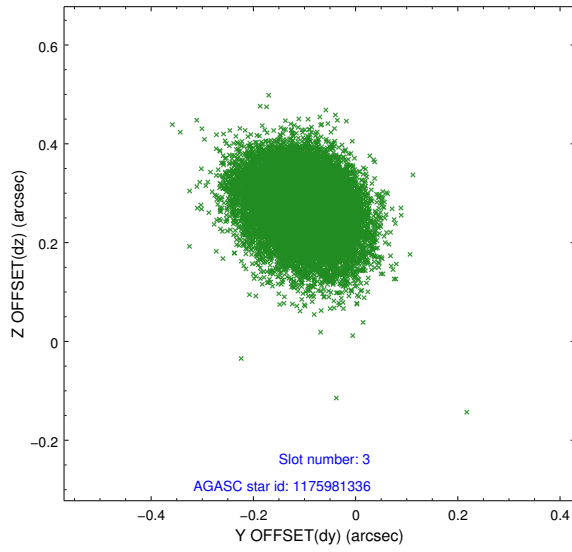
Slot Statistics

slot	status	used	id	mag	n_pts	med_dy	med_dz	dr1	dr2	ra	dec	mean_y	mean_z
0	FID		ACIS-S-1	7.15	8843	-0.047	-0.036	0.037	0.047	0.000000	0.000000	922.94	-1736.69
1	FID		ACIS-S-4	7.17	8844	0.129	0.031	0.017	0.029	0.000000	0.000000	2140.55	167.49
2	FID		ACIS-S-6	7.31	8844	-0.104	0.018	0.030	0.042	0.000000	0.000000	388.88	804.89
3	GUIDE	used	1175981336	7.31	17689	-0.103	0.273	0.084	0.139	175.260323	-60.923305	1573.48	-2058.45
4	GUIDE	used	1175990008	7.55	17686	0.230	0.229	0.078	0.128	174.384901	-61.484945	-952.66	-1979.81
5	GUIDE	used	1175991744	8.01	17687	0.107	-0.148	0.079	0.133	172.543196	-61.165647	-1909.19	1264.44
6	GUIDE	used	1175988216	7.76	17687	0.080	-0.052	0.080	0.130	172.692357	-61.078402	-1502.35	1246.80
7	GUIDE	used	1175990048	7.33	17688	-0.314	-0.297	0.085	0.135	174.391634	-60.364909	2337.02	350.49

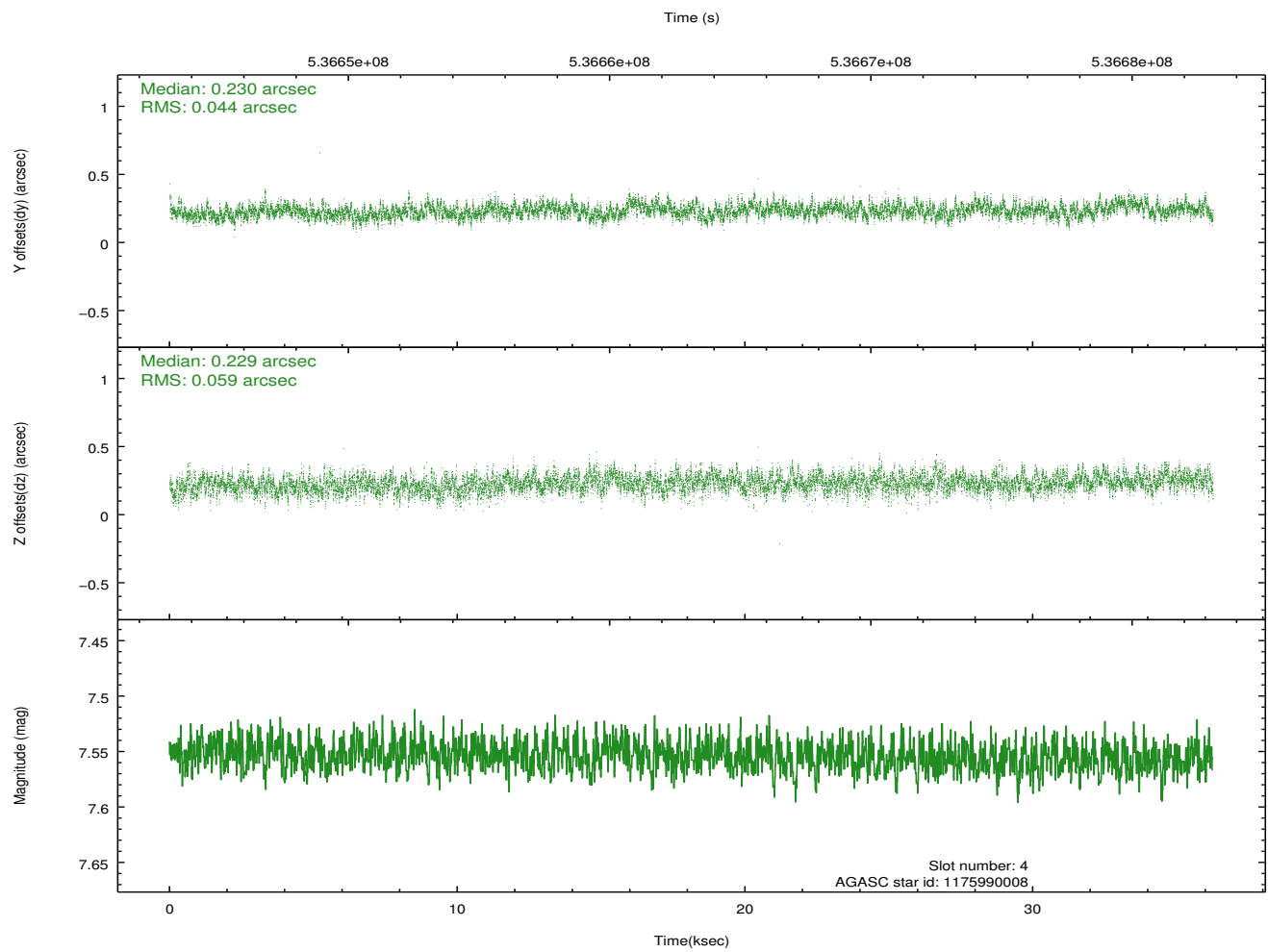
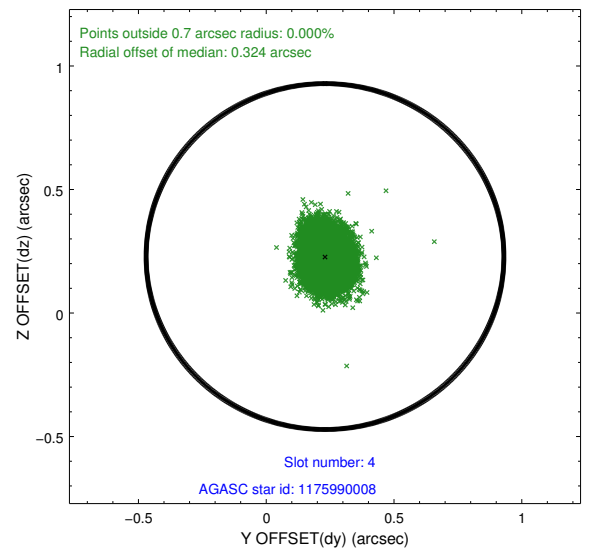
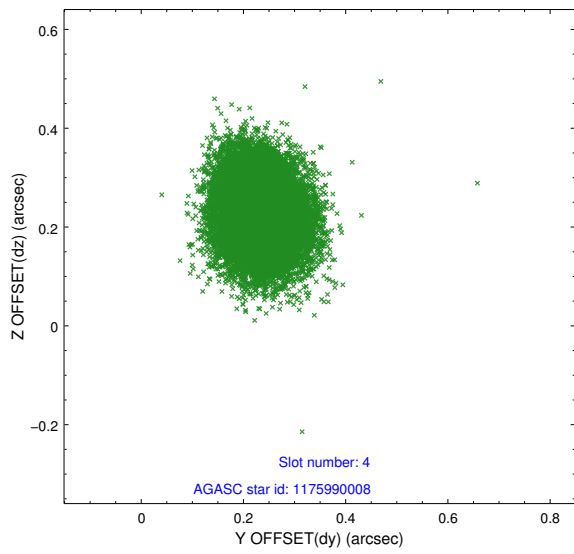
∞

2.4 Star Slots

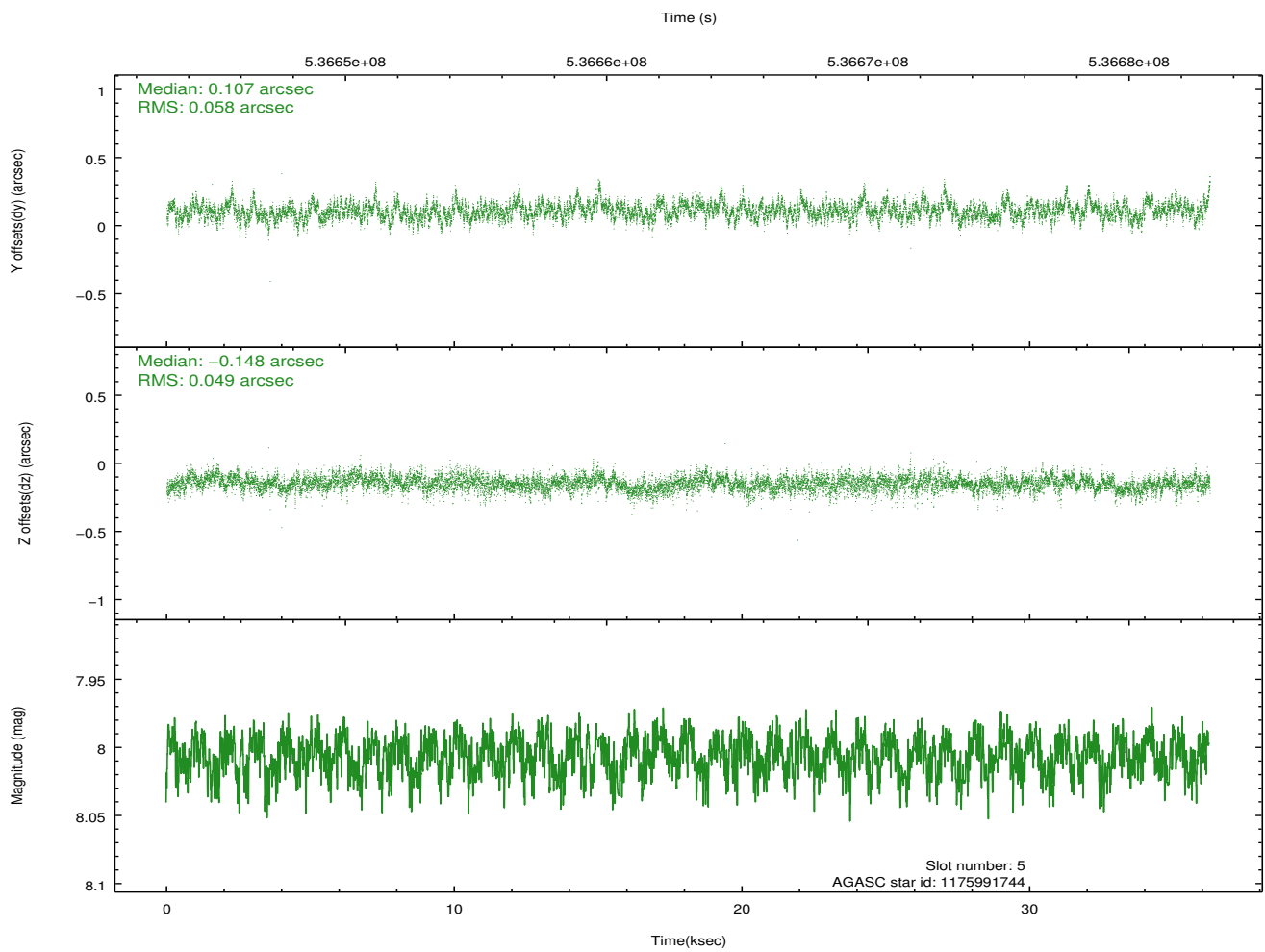
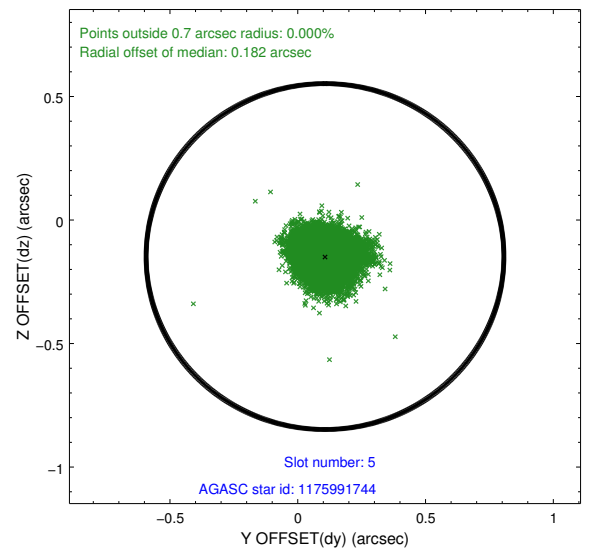
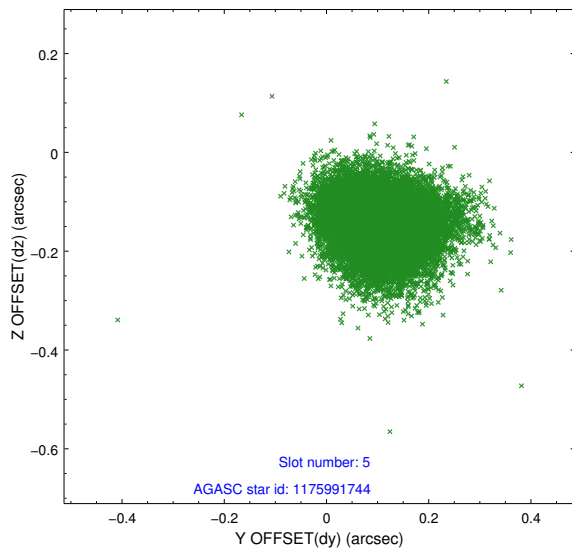
2.4.1 Slot 3



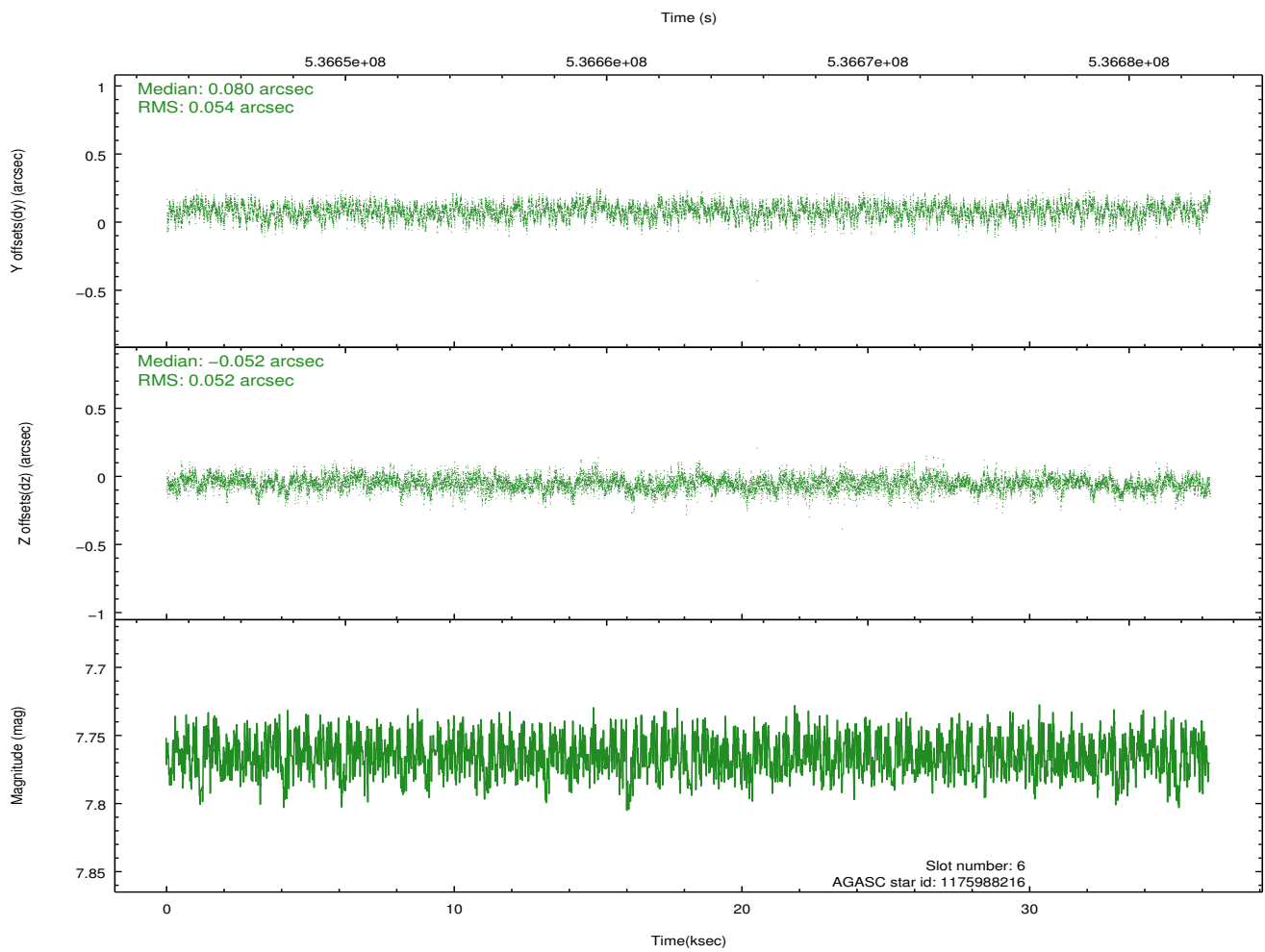
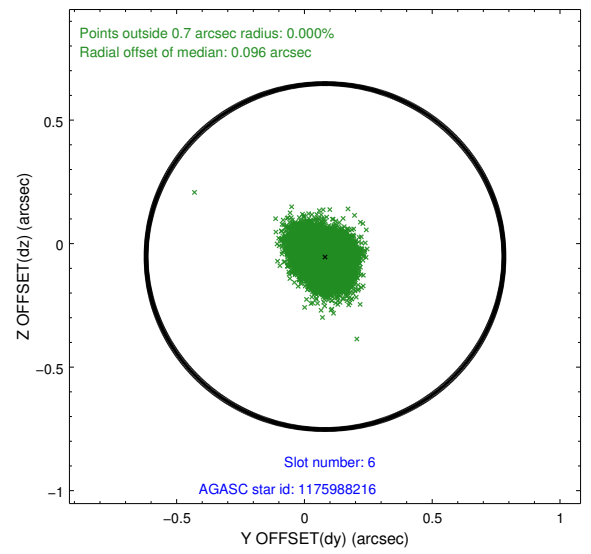
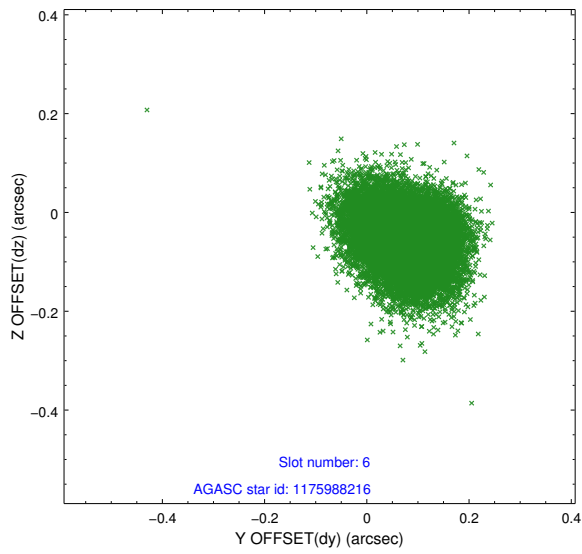
2.4.2 Slot 4



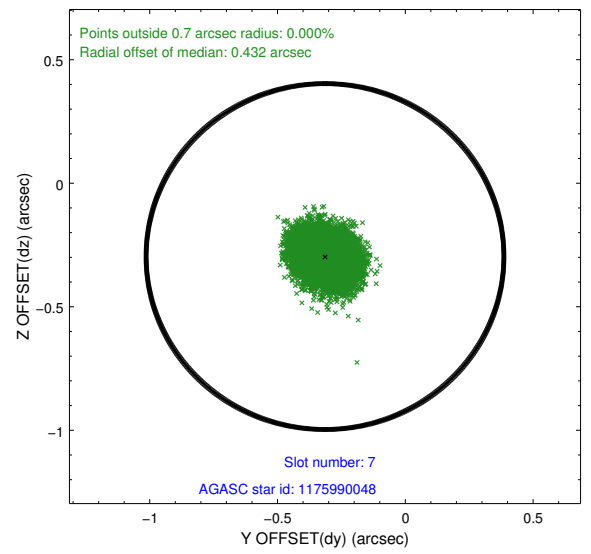
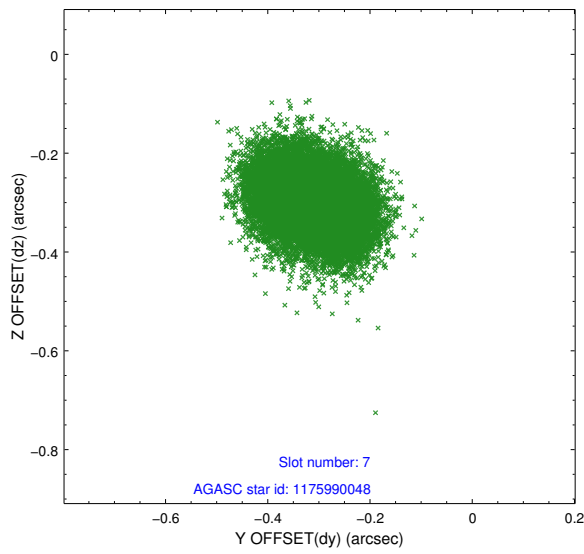
2.4.3 Slot 5



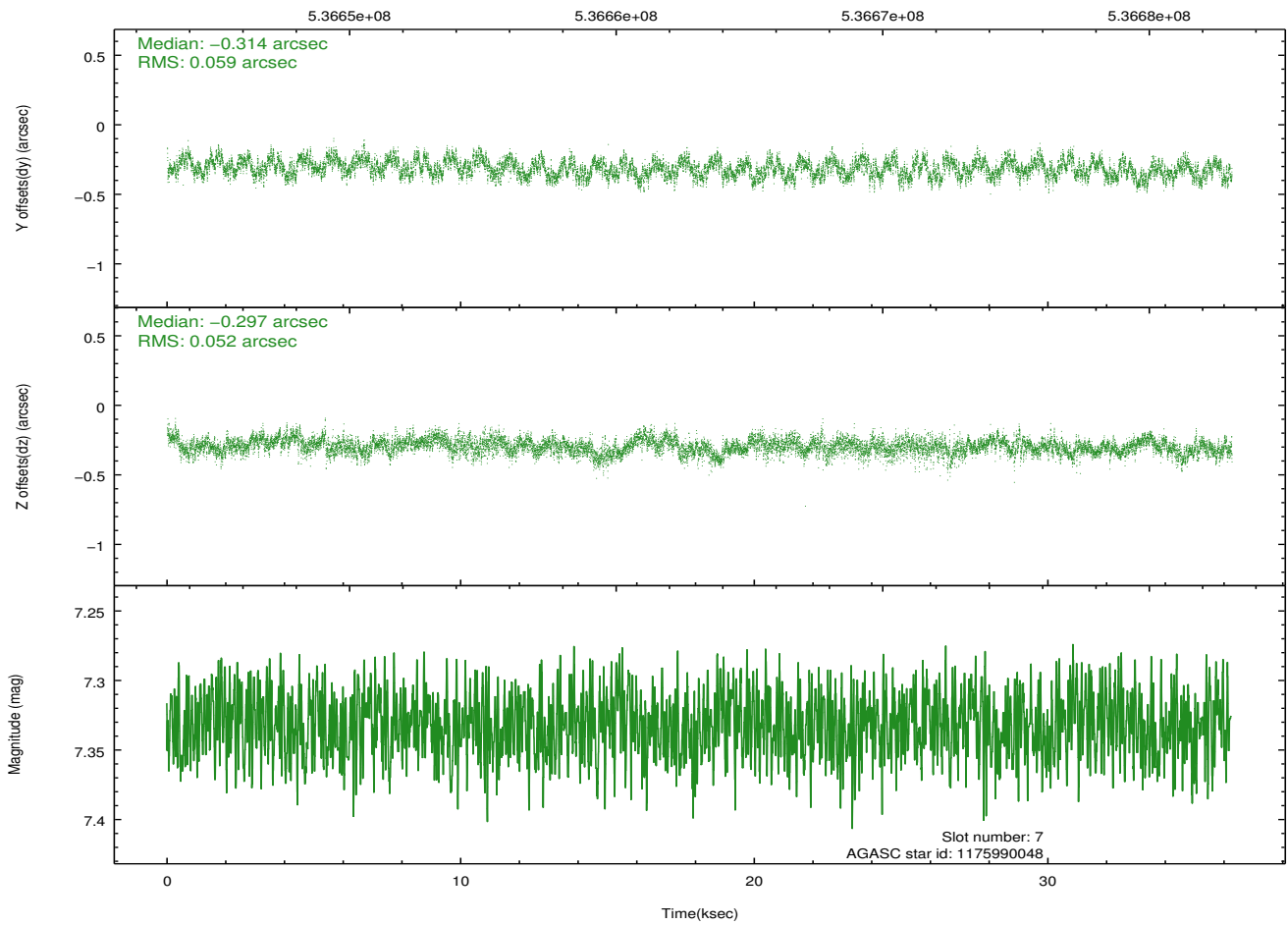
2.4.4 Slot 6



2.4.5 Slot 7

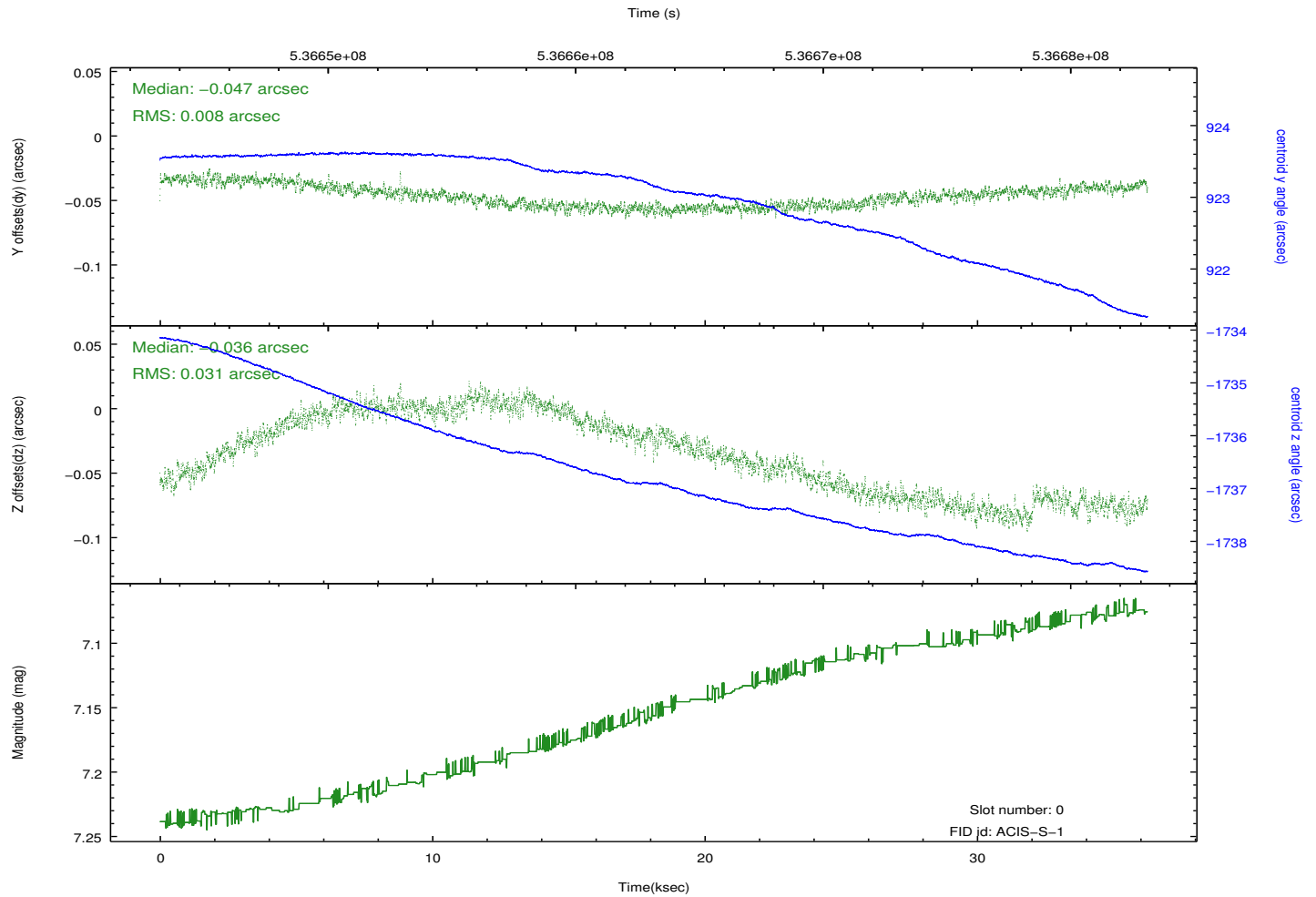
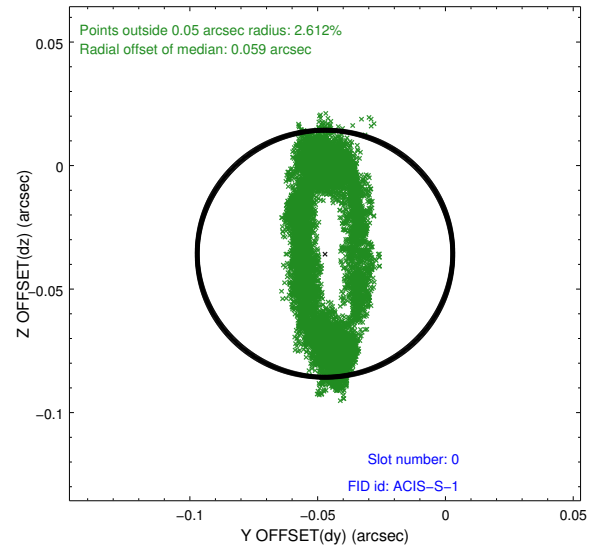
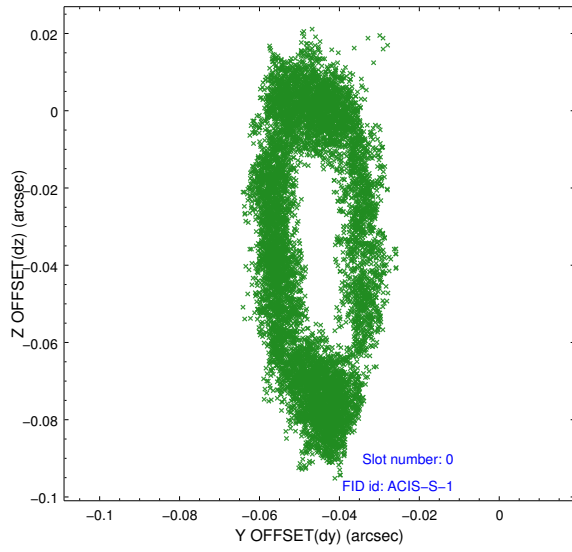


Time (s)

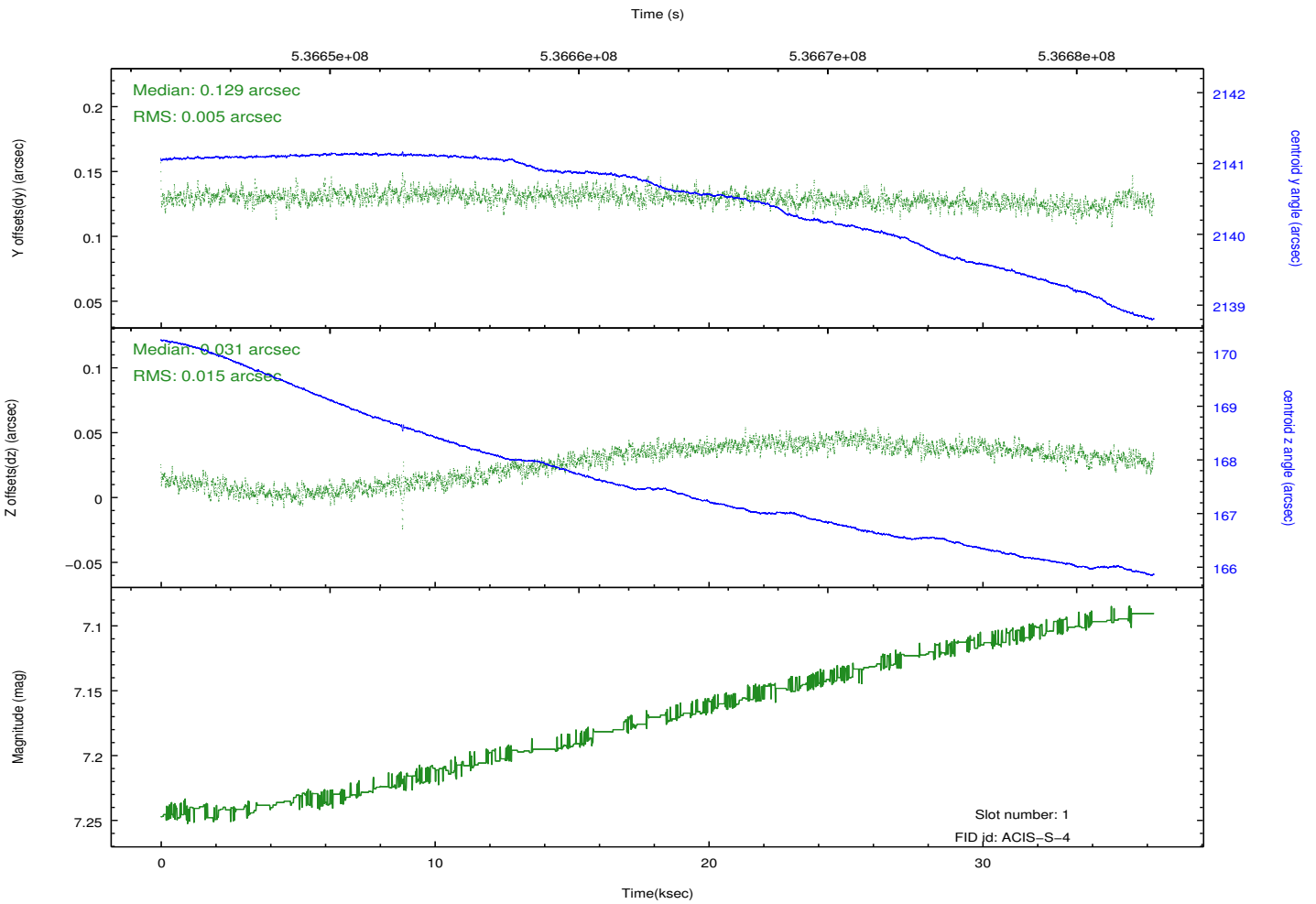
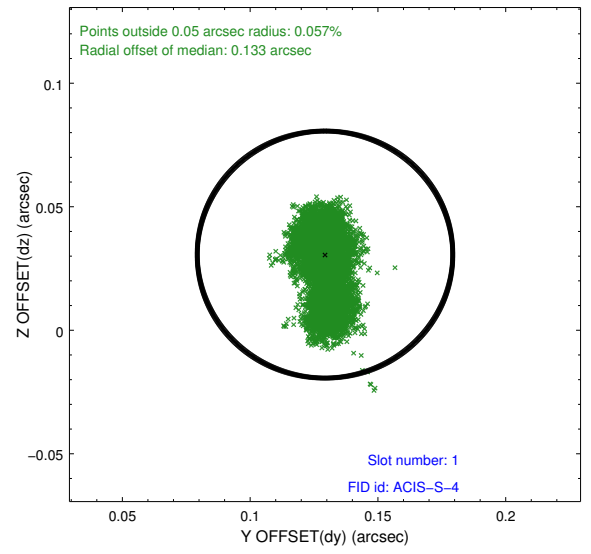
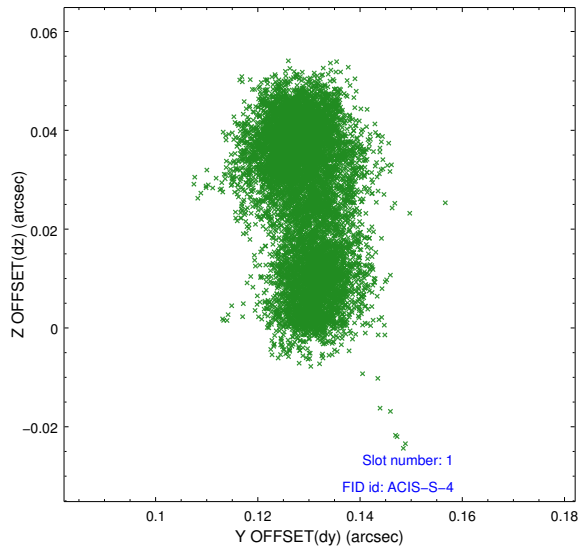


2.5 FID Slots

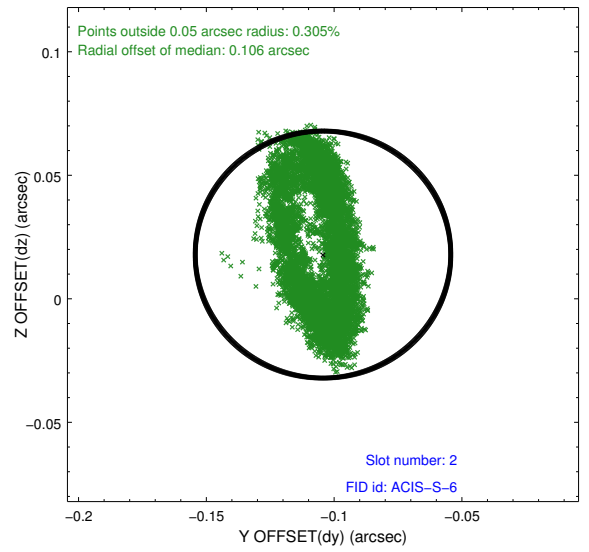
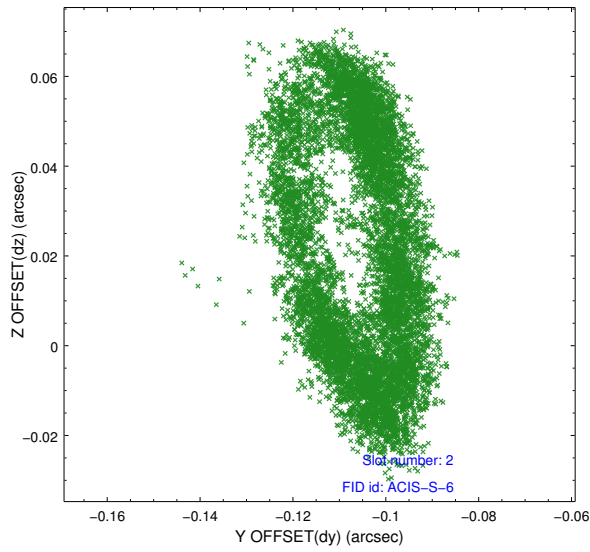
2.5.1 Slot 0



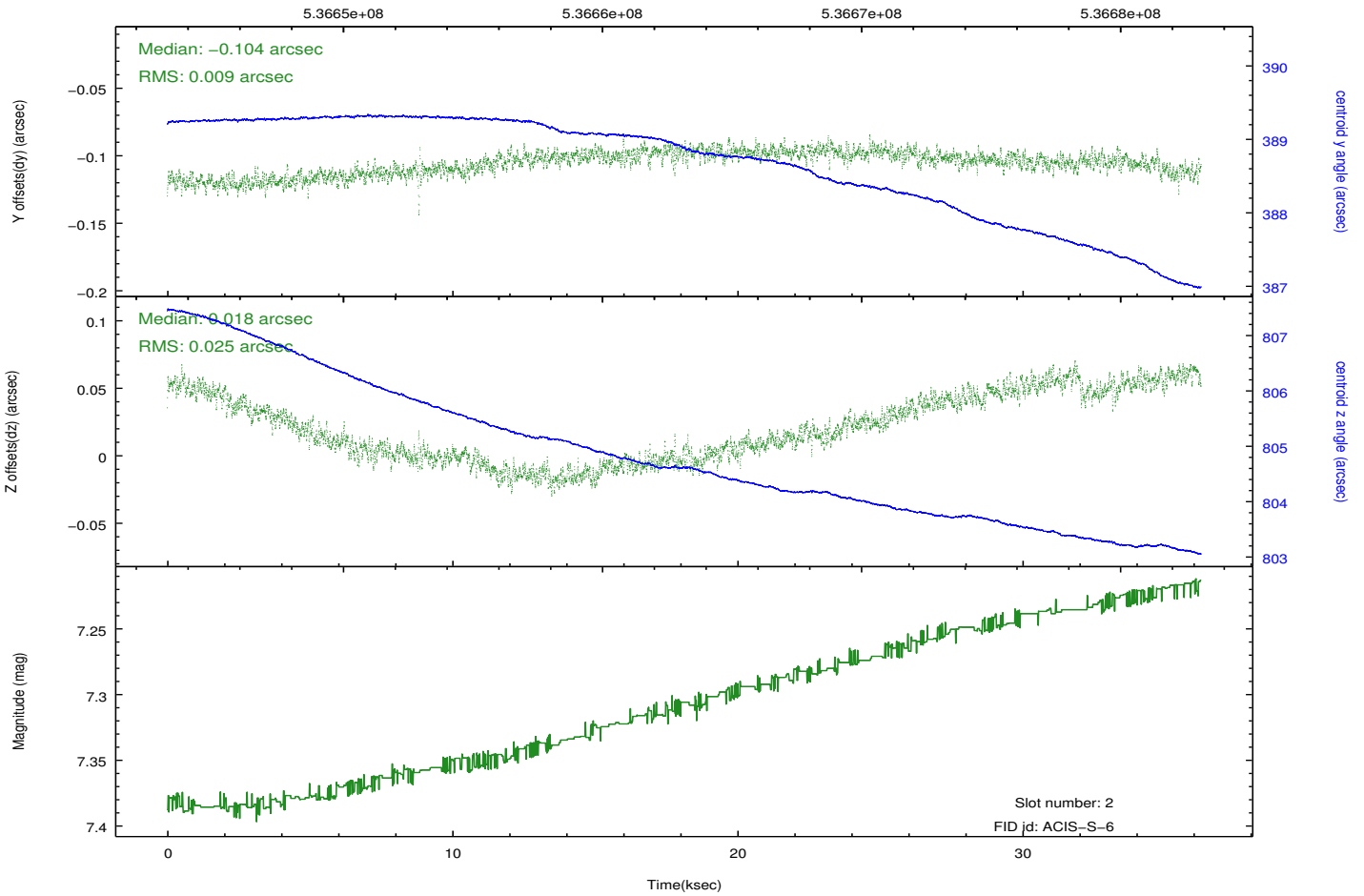
2.5.2 Slot 1



2.5.3 Slot 2



Time (s)



A Summary

A.1 Status

V&V Scientist	Joy Nichols
V&V Date (YYYY-MM-DD)	2015.01.05
V&V Edition	1
V&V Disposition and Status	OK
V&V Charge Time	36.207052297413

A.2 Comments