

V&V Reference Report

L2 ASCDS Version : 10.4.3.1

Observation 18092 - L2 Version 1
Chandra X-Ray Center

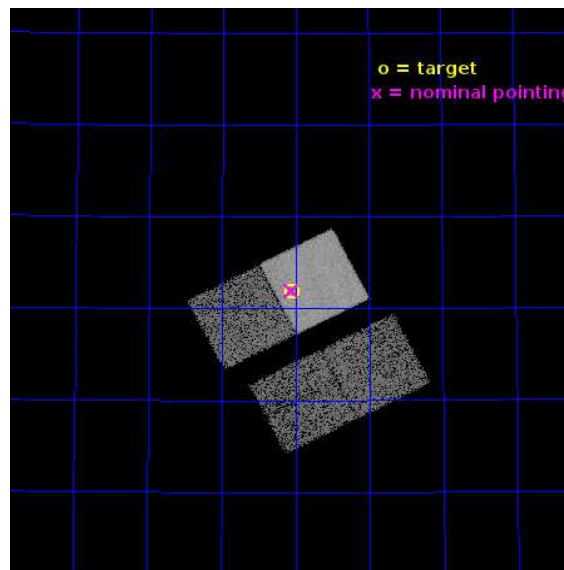
L2 Processing Date : Apr 8 2016

Contents

1	Front	2
2	OBI	3
2.1	OBI	3
2.1.1	Images	3
2.1.2	Bias	3
2.1.3	Parameters	4
2.1.4	Events	4
2.2	Compared Parameters	5
2.3	Aspect	6
2.4	Star Slots	9
2.4.1	Slot 3	9
2.4.2	Slot 4	10
2.4.3	Slot 5	11
2.4.4	Slot 6	12
2.4.5	Slot 7	13
2.5	FID Slots	14
2.5.1	Slot 0	14
2.5.2	Slot 1	15
2.5.3	Slot 2	16
A	Summary	17
A.1	Status	17
A.2	Comments	17

1 Front

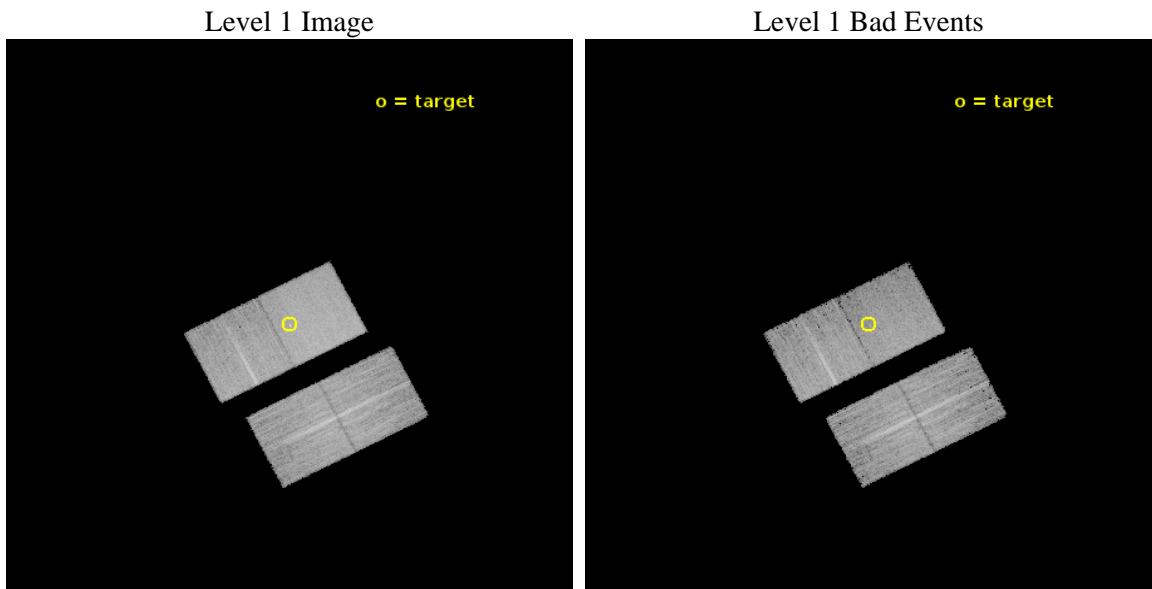
seq_num	703158	Sequence number
obs_id	18092	Observation id
title	Extending the Extragalactic 3CR Chandra Survey to z=1.5	Proposal t
observer	Francesco Massaro	Principal investigator
object	3CR 69	Source name
dtcycle	0	
cycle	P	events from which exps? Prim/Second/Both
ra_targ	39.510417	Observer's specified target RA [deg]
dec_targ	59.197556	Observer's specified target Dec [deg]
ra_nom	39.514099418674	Nominal RA [deg]
dec_nom	59.199472750557	Nominal Dec [deg]
roll_nom	332.86860590645	Nominal Roll [deg]
revision	1	Processing version of data
ontime	12073.783762217	Sum of GTIs [s]
livetime	11916.030888773	Livetime [s]
ontime2	12073.660642266	Sum of GTIs [s]
ontime3	12073.70168221	Sum of GTIs [s]
ontime6	12070.601702094	Sum of GTIs [s]
ontime7	12073.783762217	Sum of GTIs [s]
l2events	62998	Number of level 2 events



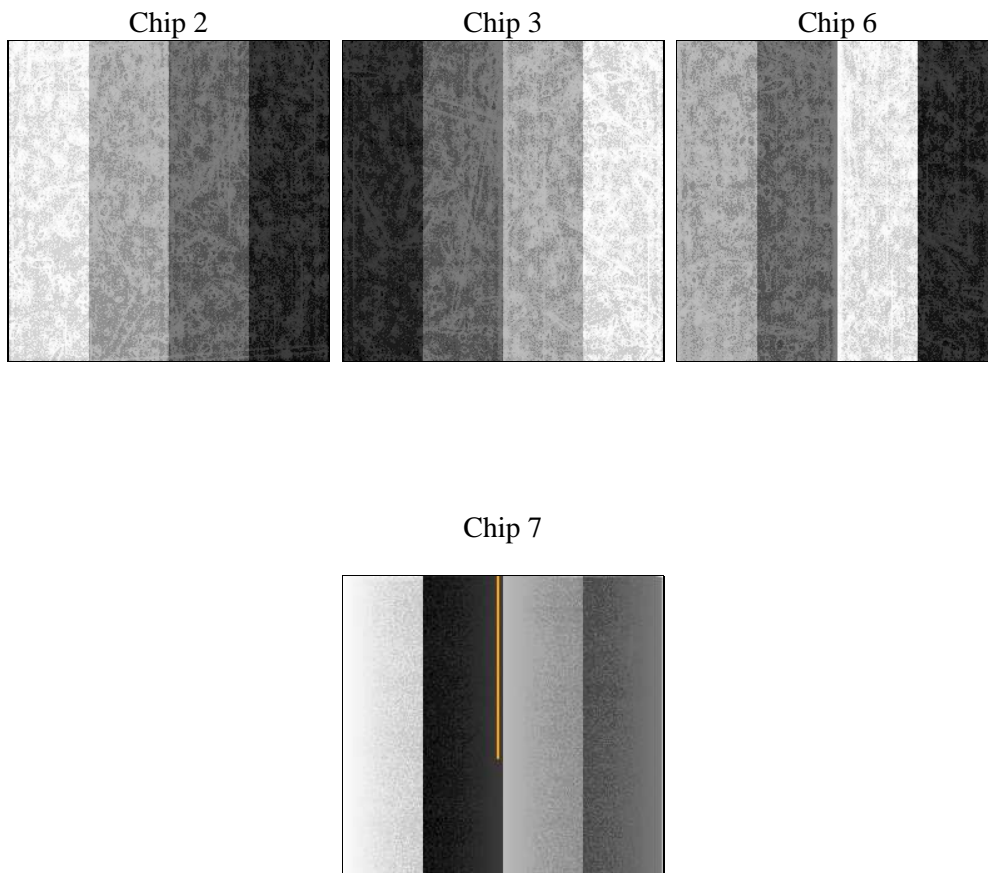
2 OBI

2.1 OBI

2.1.1 Images



2.1.2 Bias



2.1.3 Parameters

obi_num	0	Obi number	sched_exp_time	12000.000000	[s] Scheduled observation exposure time
ascdsver	10.4.3.1	Processing system revision	ontime	12073.783762217	Sum of GTIs [s]
caldsver	4.7.1	 	ontime2	12073.660642266	Sum of GTIs [s]
date	2016-04-09T01:57:34	Date and time of file creation	ontime3	12073.70168221	Sum of GTIs [s]
revision	1	Processing version of data	ontime6	12070.601702094	Sum of GTIs [s]
			ontime7	12073.783762217	Sum of GTIs [s]
			l1events	322469	Number of level 1 events

2.1.4 Events

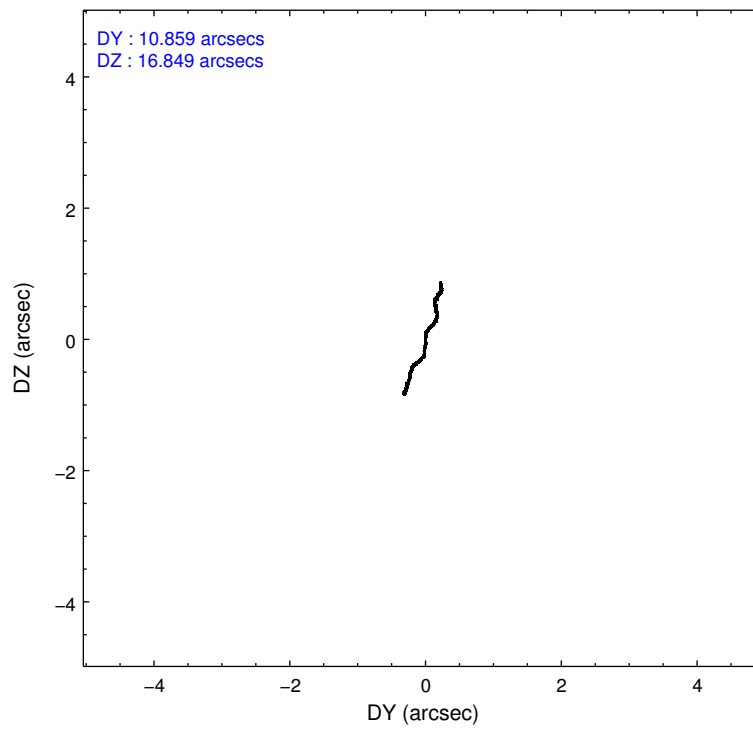
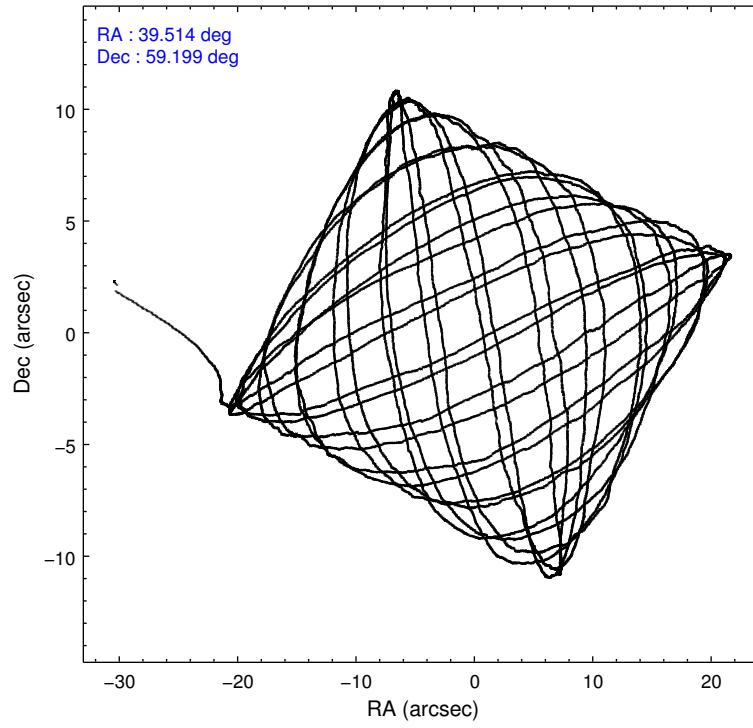
	ccd 2	ccd 3	ccd 6	ccd 7
level 1 events	75171	71613	76607	99078
rejected events	67161	63939	68006	56073
rejected %	89%	89%	88%	56%

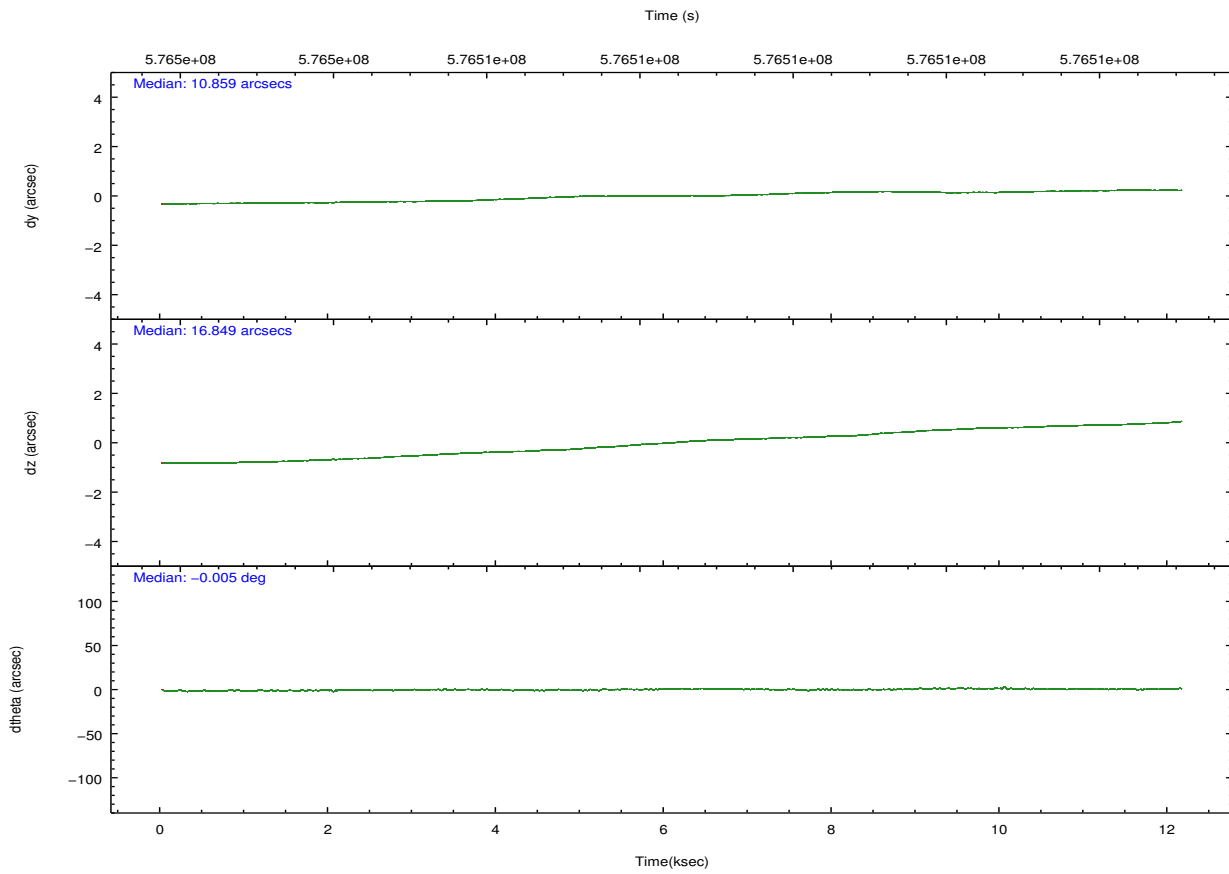
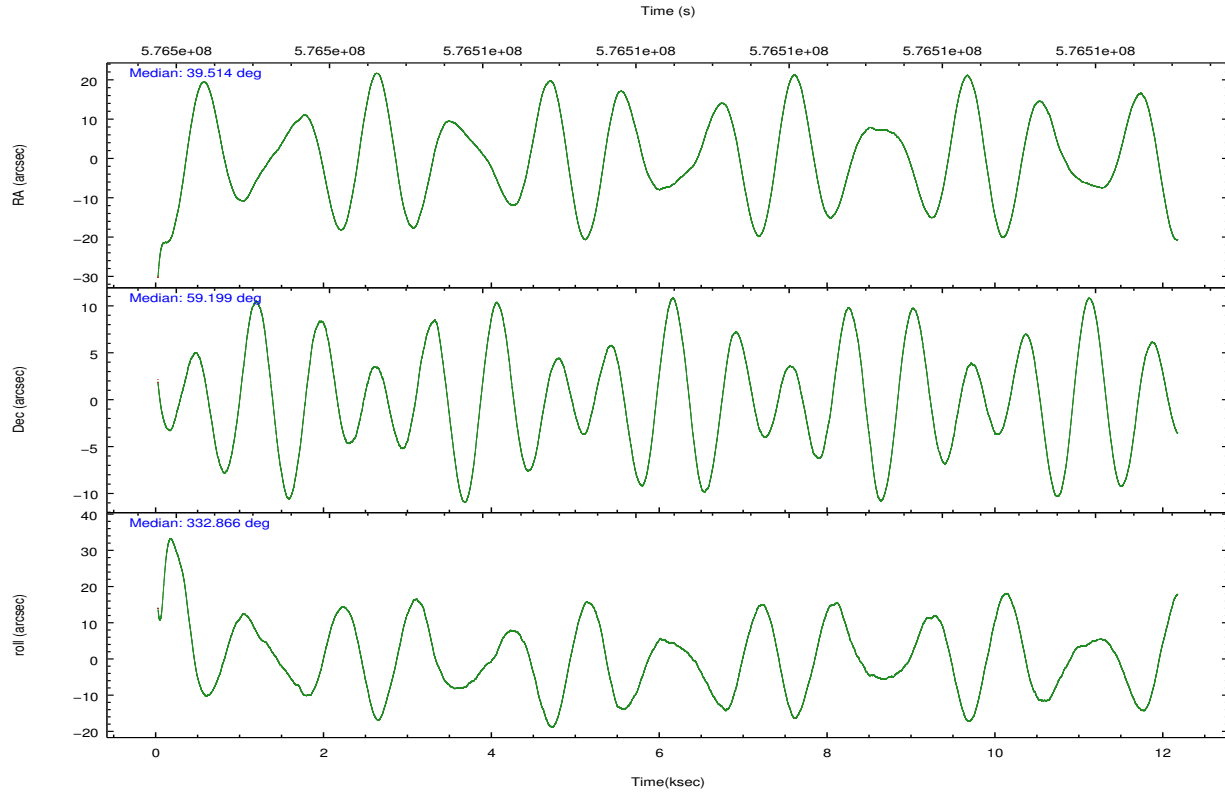
	ccd 2	ccd 3	ccd 6	ccd 7
grade 0 events	2776	2640	2889	3666
	3%	3%	3%	3%
grade 1 events	44	45	27	126
	0%	0%	0%	0%
grade 2 events	1970	1665	1994	8912
	2%	2%	2%	8%
grade 3 events	862	831	826	3493
	1%	1%	1%	3%
grade 4 events	772	860	847	3474
	1%	1%	1%	3%
grade 5 events	2901	3625	3683	9696
	3%	5%	4%	9%
grade 6 events	1633	1680	2047	23468
	2%	2%	2%	23%
grade 7 events	64213	60267	64294	46243
	85%	84%	83%	46%

2.2 Compared Parameters

Parameter	Planned	Actual	Parameter	Planned	Actual
Instrument	ACIS	ACIS	Obspar format version number	7	7
Detector	ACIS-2367	ACIS-2367	Obspar file type	PREDICTED	ACTUAL
Grating	NONE	NONE	Obspar update status	NONE	UPDATED
Data mode	VFAINT	VFAINT	CCD I0 on	N	N
Observation mode	POINTING	POINTING	CCD I1 on	N	N
[deg] Pointing RA	39.460678	39.51409941867433	CCD I2 on	O1	Y
[deg] Pointing Dec	59.197740	59.19947275055651	CCD I3 on	O2	Y
[deg] Pointing Roll	332.757896	332.8686059064467	CCD S0 on	N	N
[mm] SIM focus pos	-0.684267	-0.6828225247311905	CCD S1 on	N	N
[mm] SIM defocus	0	0.001444936568705701	CCD S2 on	Y	Y
[mm] SIM translation stage pos	-190.132523	-190.1400660498719	CCD S3 on	Y	Y
[mm] SIM translation stage offset	0	0.00754346686406393	CCD S4 on	N	N
[s] Observation start time (MET)	576502514.184000	576501302.90976	CCD S5 on	N	N
Observation start date	2016-04-08T11:34:06	2016-04-08T11:15:02	Number of optional ACIS chips dropped	0	0
[s] Observation end time (MET)	576514514.184000	576515483.78558	On-chip summing requested	N	N
Observation end date	2016-04-08T14:54:06	2016-04-08T15:11:23	Subarray requested	NONE	NONE
Read mode	TIMED	TIMED	Alternating exposures requested	N	N
			[s] Primary exposure time	0.000000	3.1

2.3 Aspect



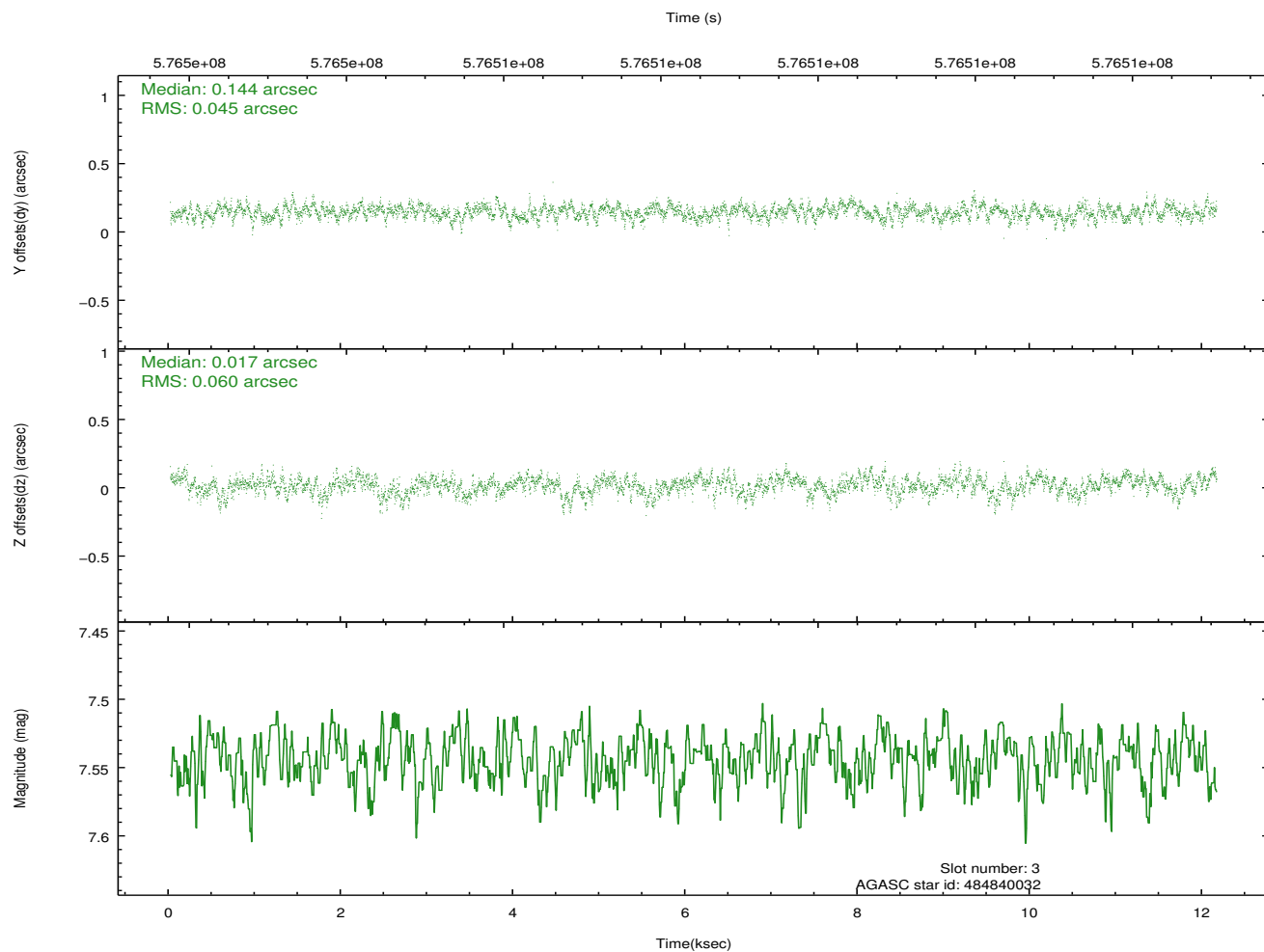
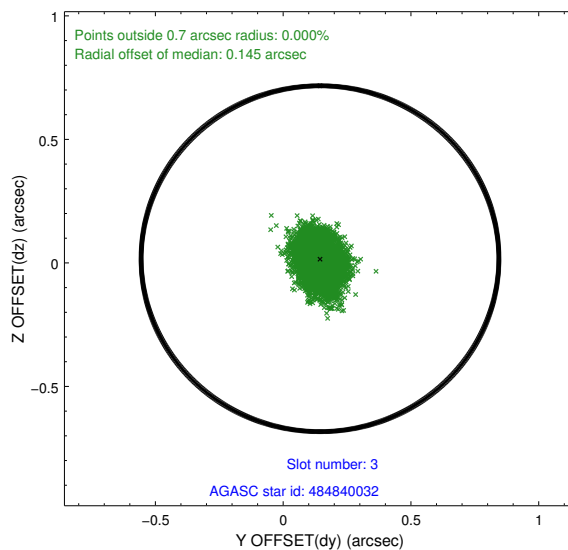
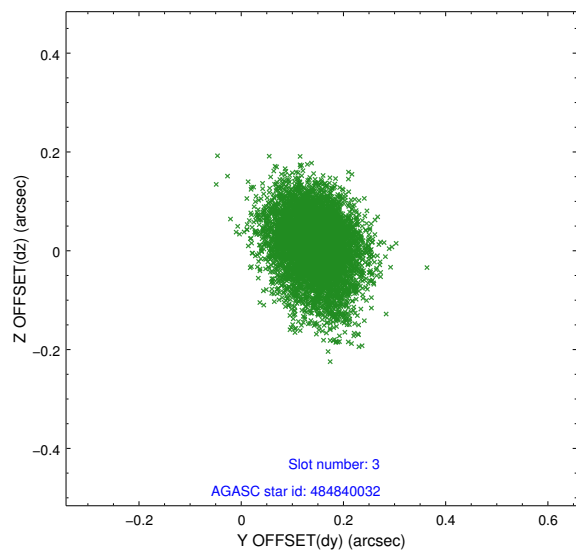


Slot Statistics

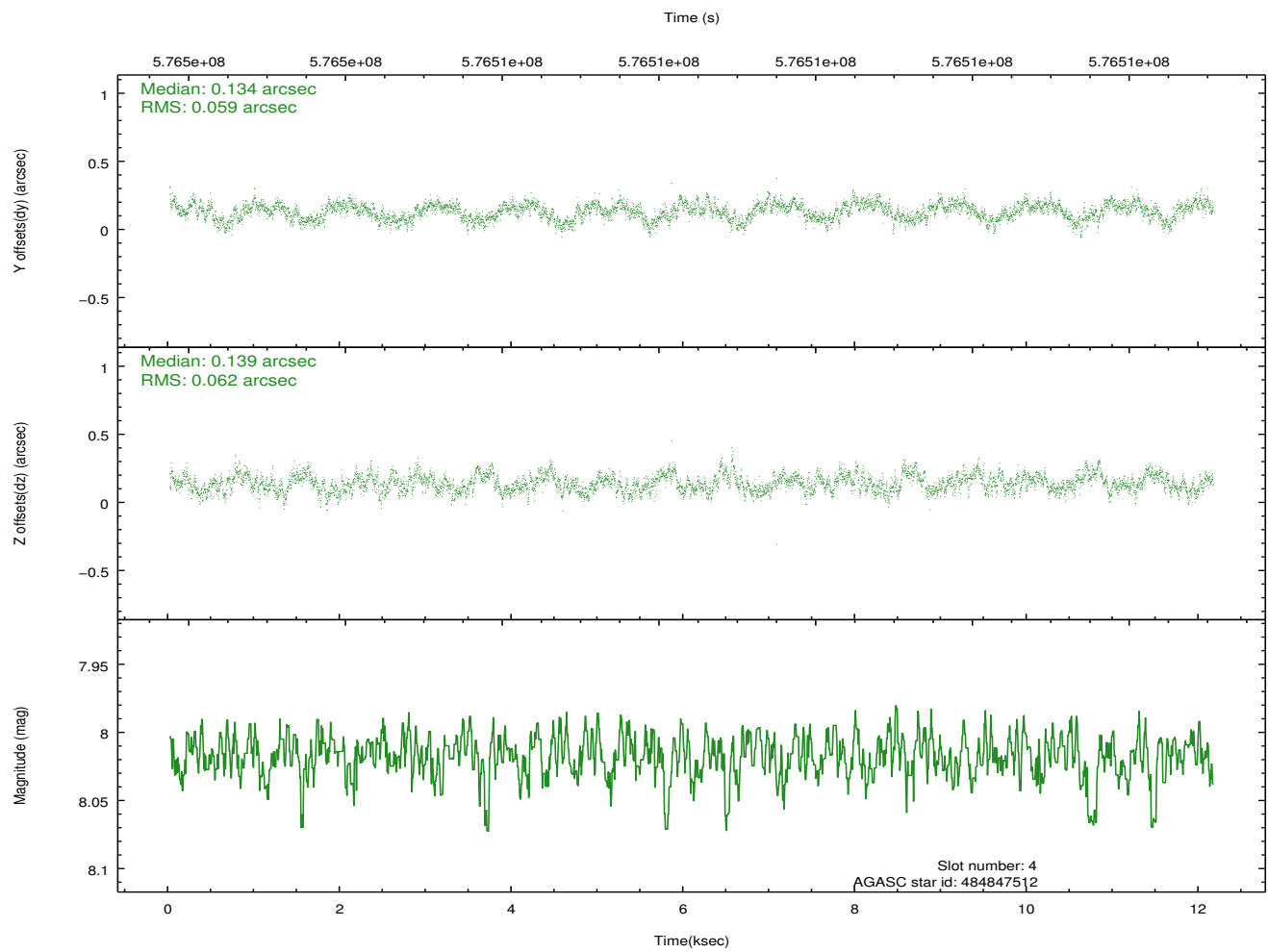
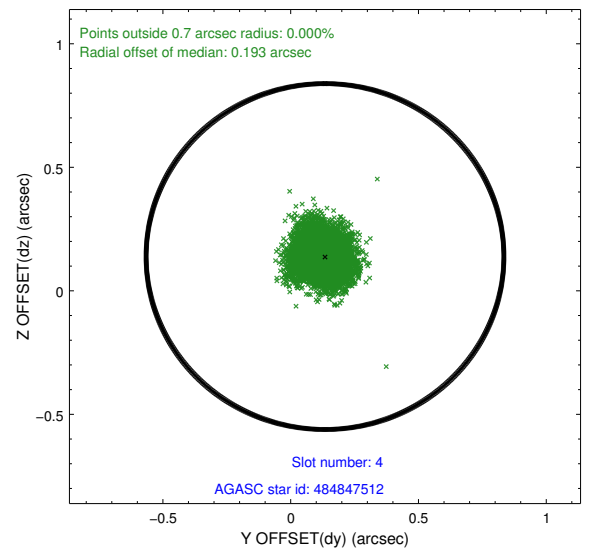
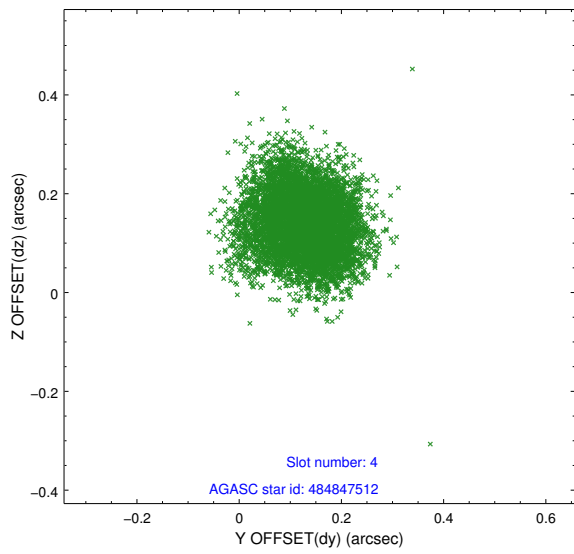
slot	status	used	id	mag	n_pts	med_dy	med_dz	dr1	dr2	ra	dec	mean_y	mean_z
0	FID		ACIS-S-1	7.20	2964	0.031	-0.076	0.025	0.042	0.000000	0.000000	932.37	-1733.95
1	FID		ACIS-S-4	7.22	2964	0.290	0.042	0.023	0.033	0.000000	0.000000	2150.26	169.90
2	FID		ACIS-S-5	7.23	2963	-0.348	0.044	0.008	0.015	0.000000	0.000000	-1816.36	163.94
3	GUIDE	used	484840032	7.54	5928	0.144	0.017	0.078	0.132	39.804518	58.843246	1153.62	-839.96
4	GUIDE	used	484847512	8.02	5928	0.134	0.139	0.092	0.146	39.067323	59.168888	-598.12	-422.61
5	GUIDE	used	484848536	8.51	5926	-0.154	0.106	0.095	0.153	38.499242	59.182256	-1556.79	-849.83
6	GUIDE	used	486543720	8.52	5927	-0.191	-0.244	0.103	0.172	40.326251	59.714594	540.38	2382.43
7	GUIDE	used	486547568	8.71	5920	0.071	-0.017	0.083	0.136	40.925412	59.242194	2311.81	1403.54

2.4 Star Slots

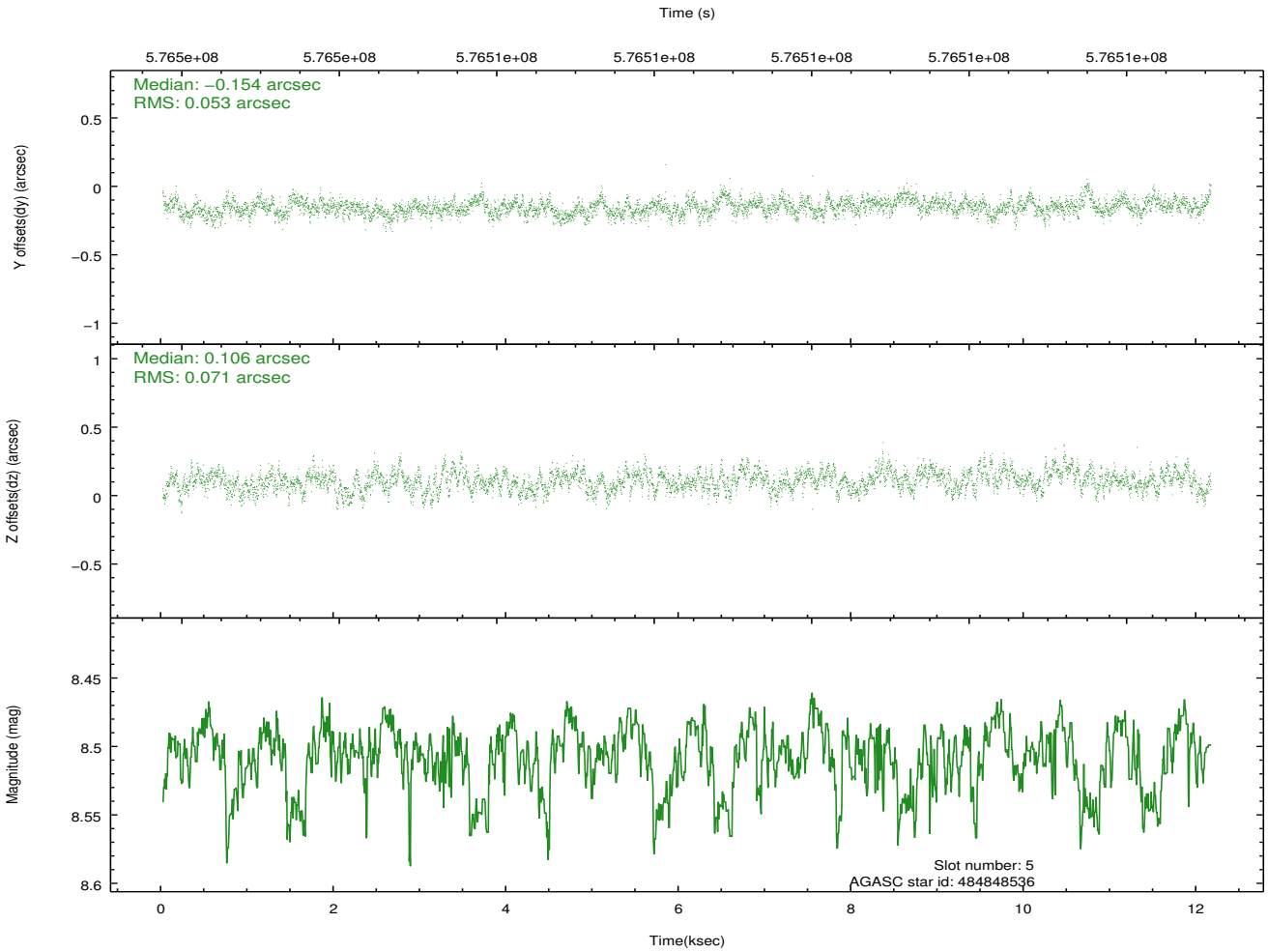
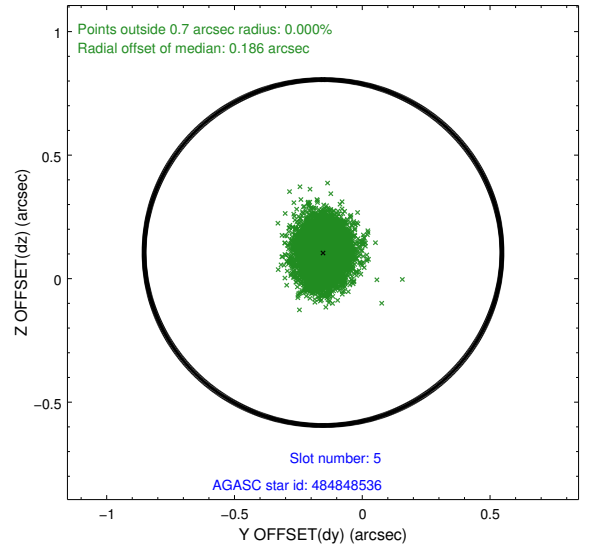
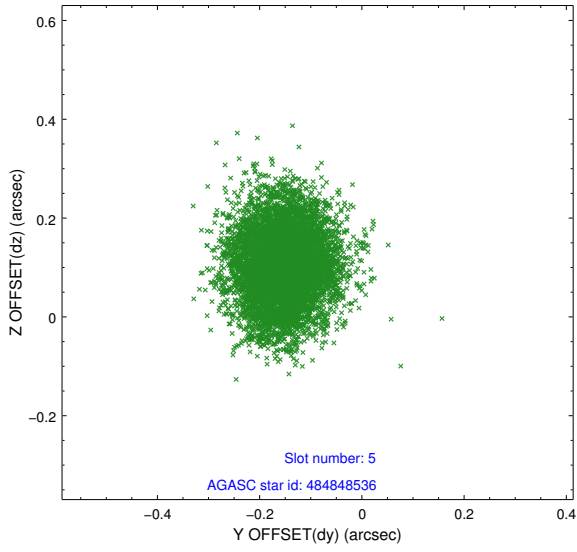
2.4.1 Slot 3



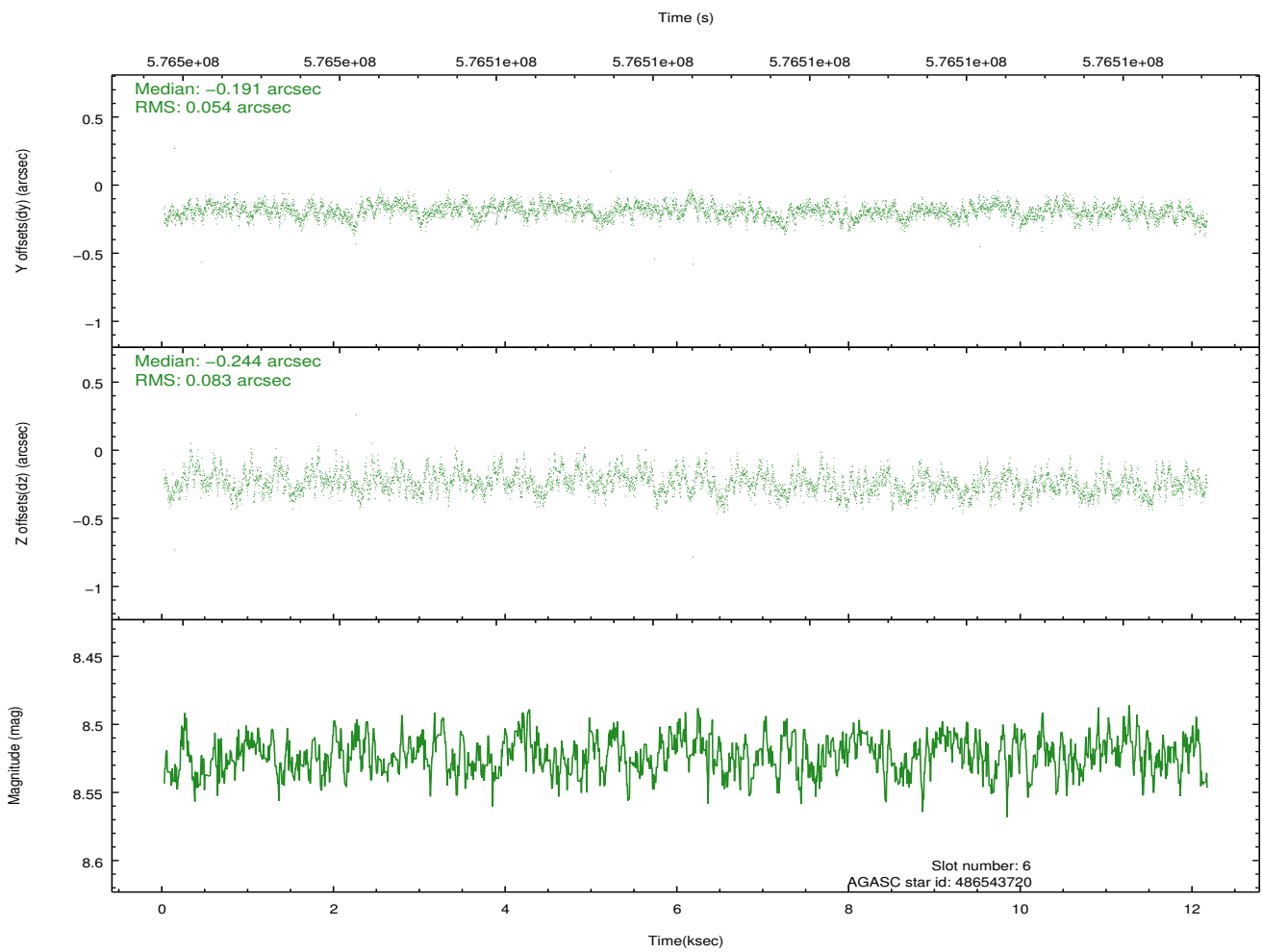
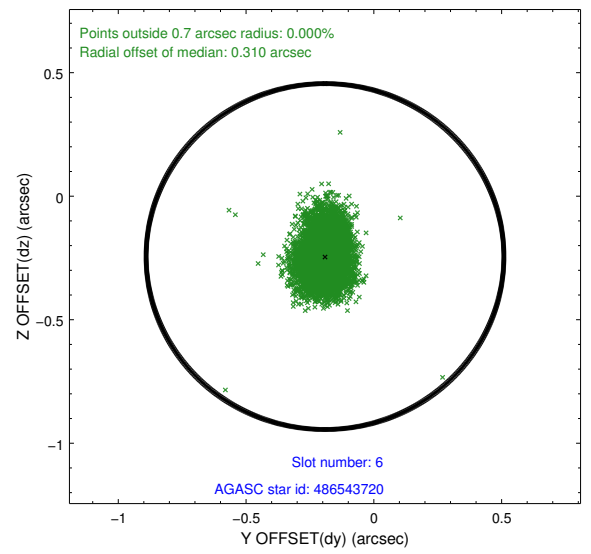
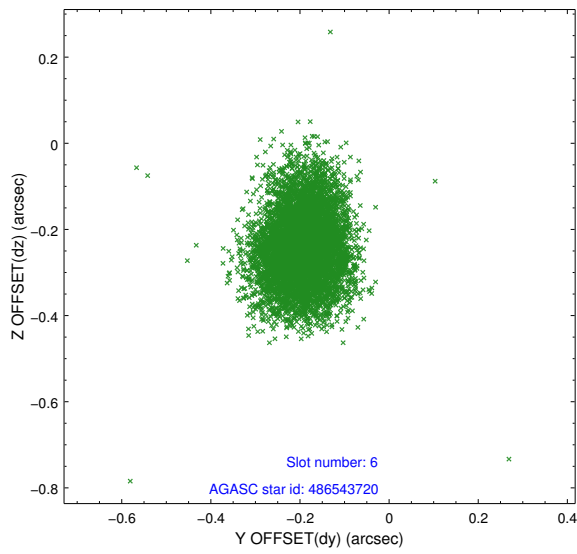
2.4.2 Slot 4



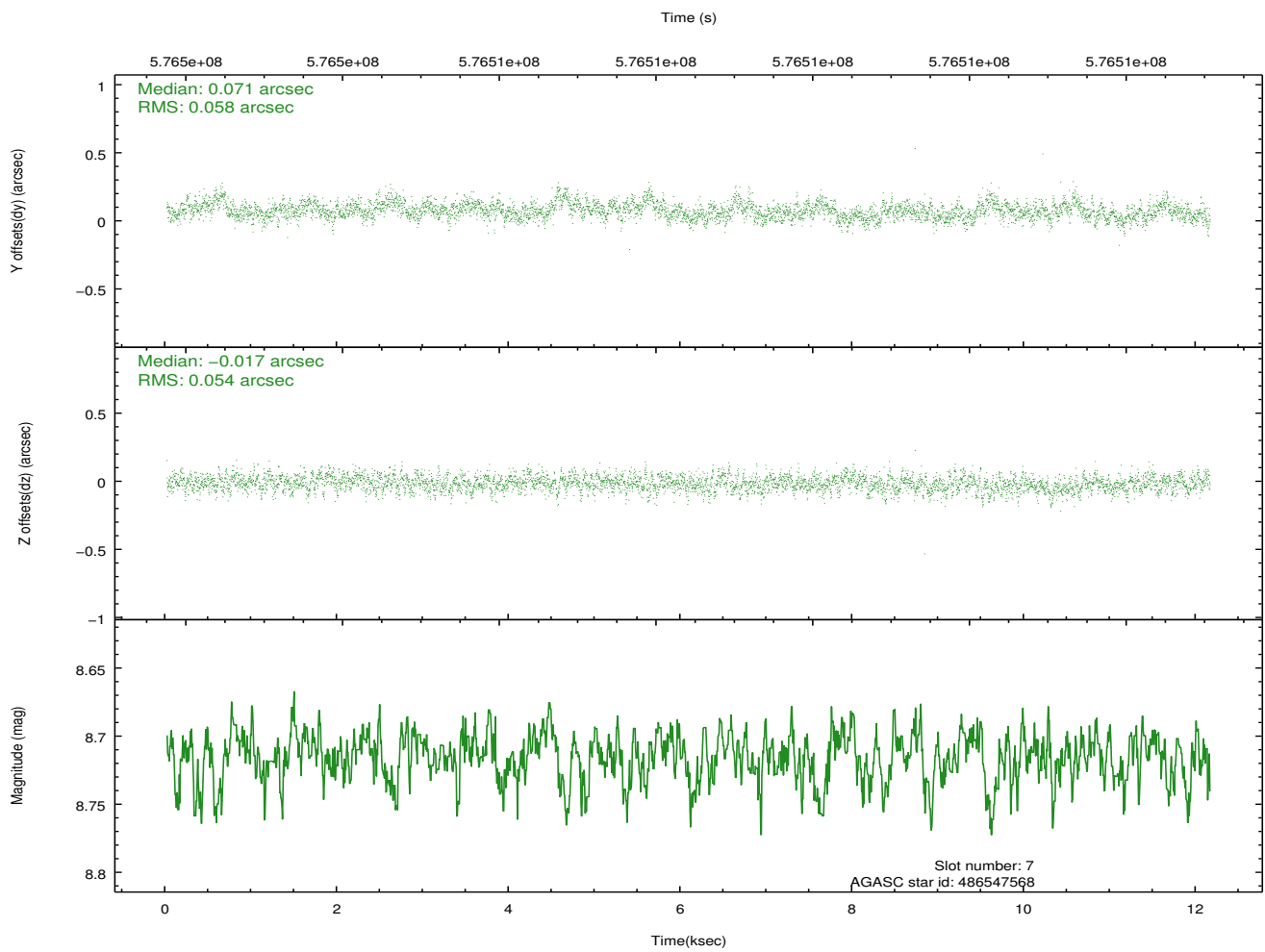
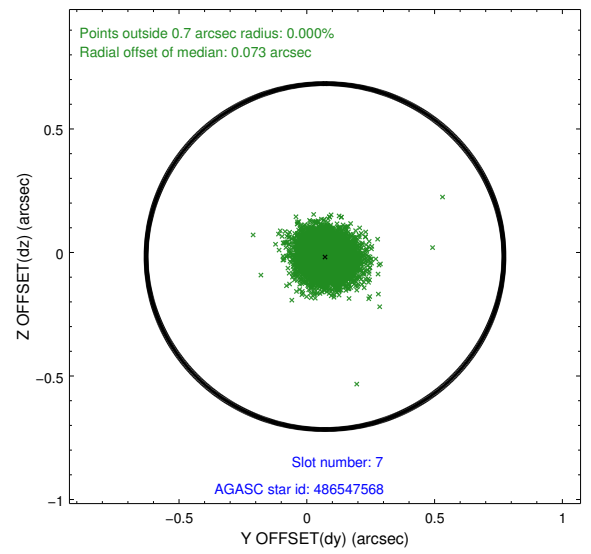
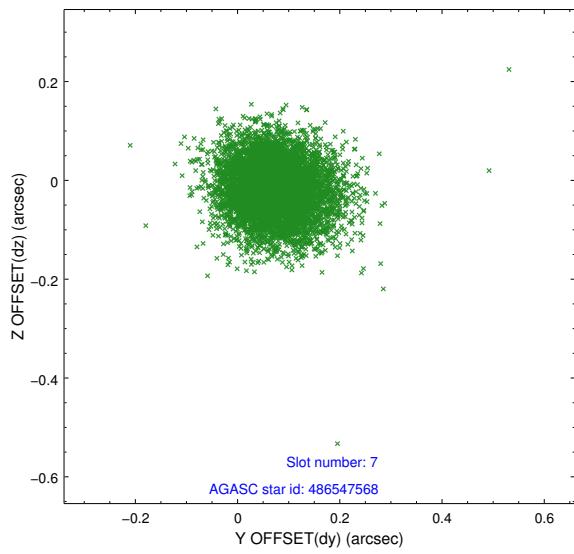
2.4.3 Slot 5



2.4.4 Slot 6

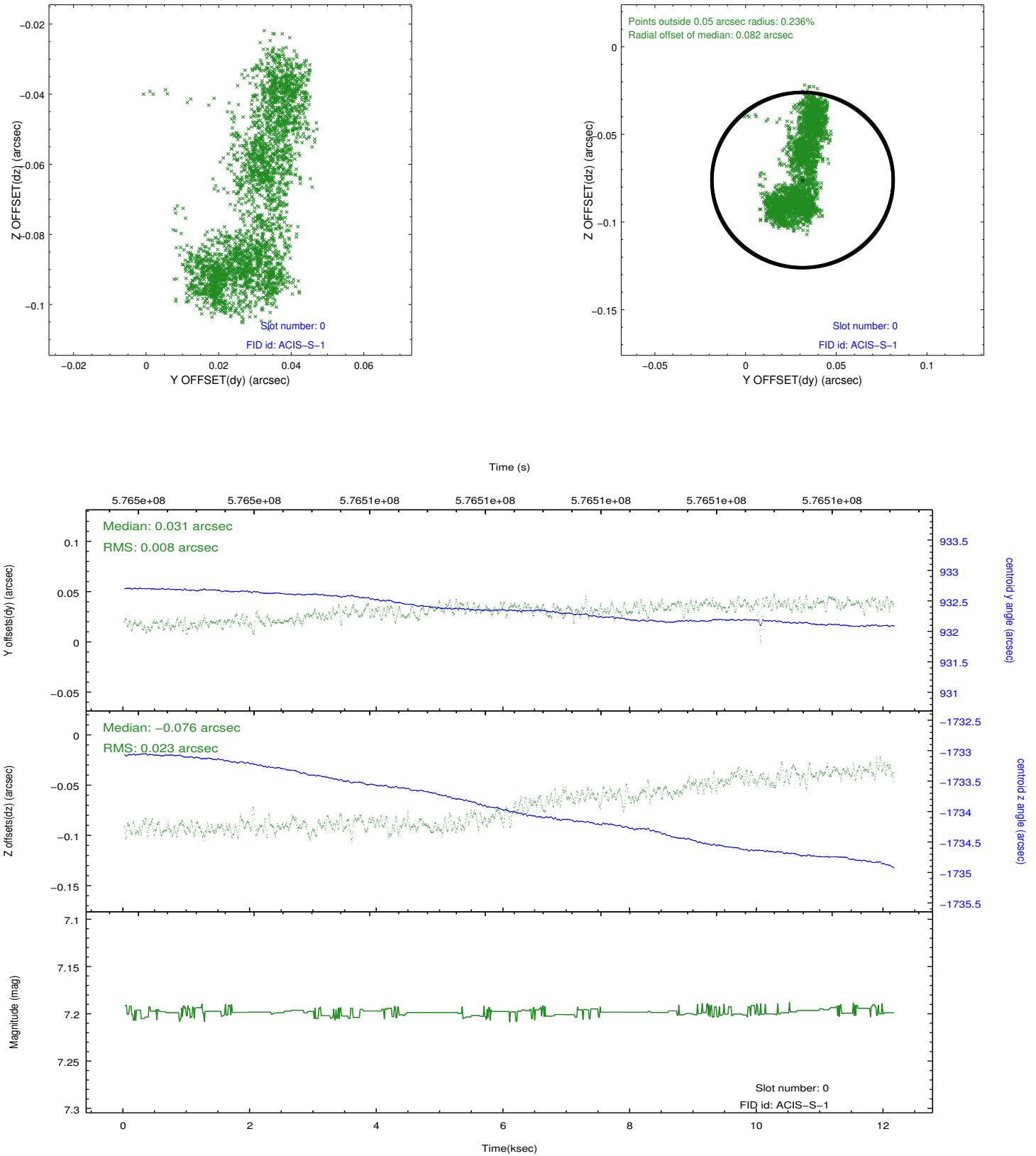


2.4.5 Slot 7

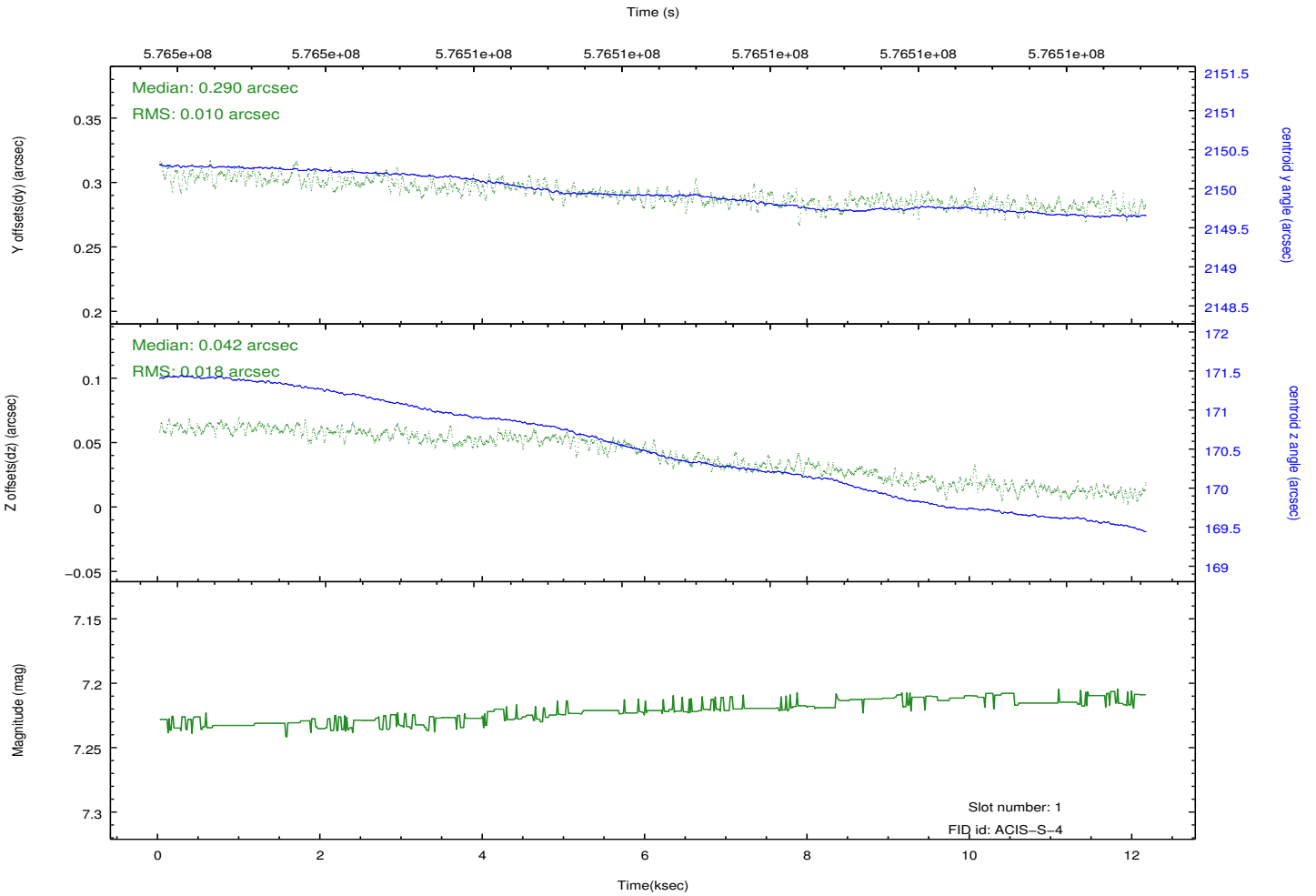
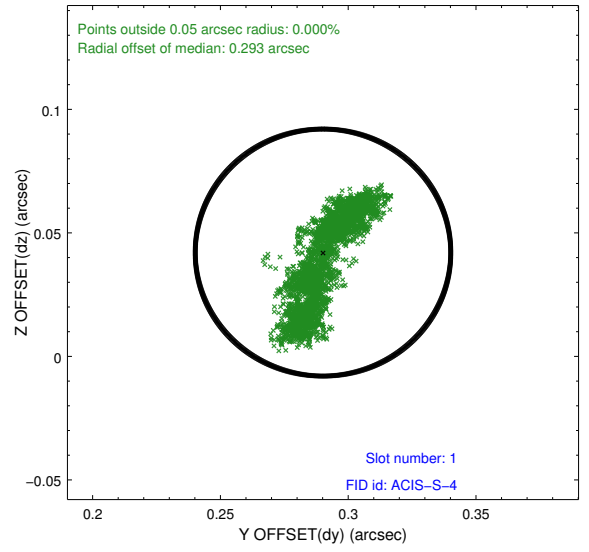
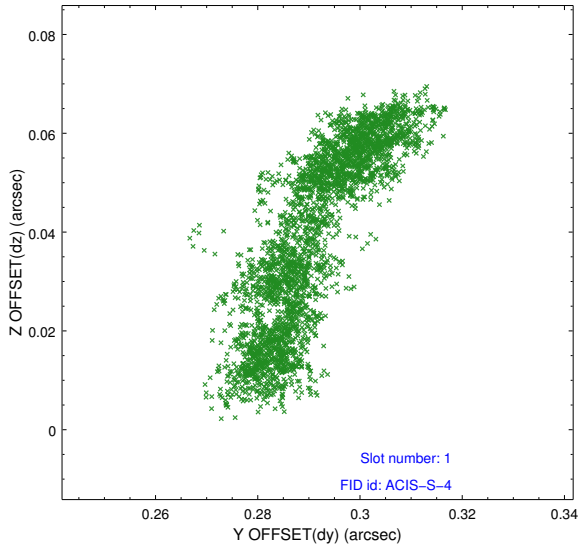


2.5 FID Slots

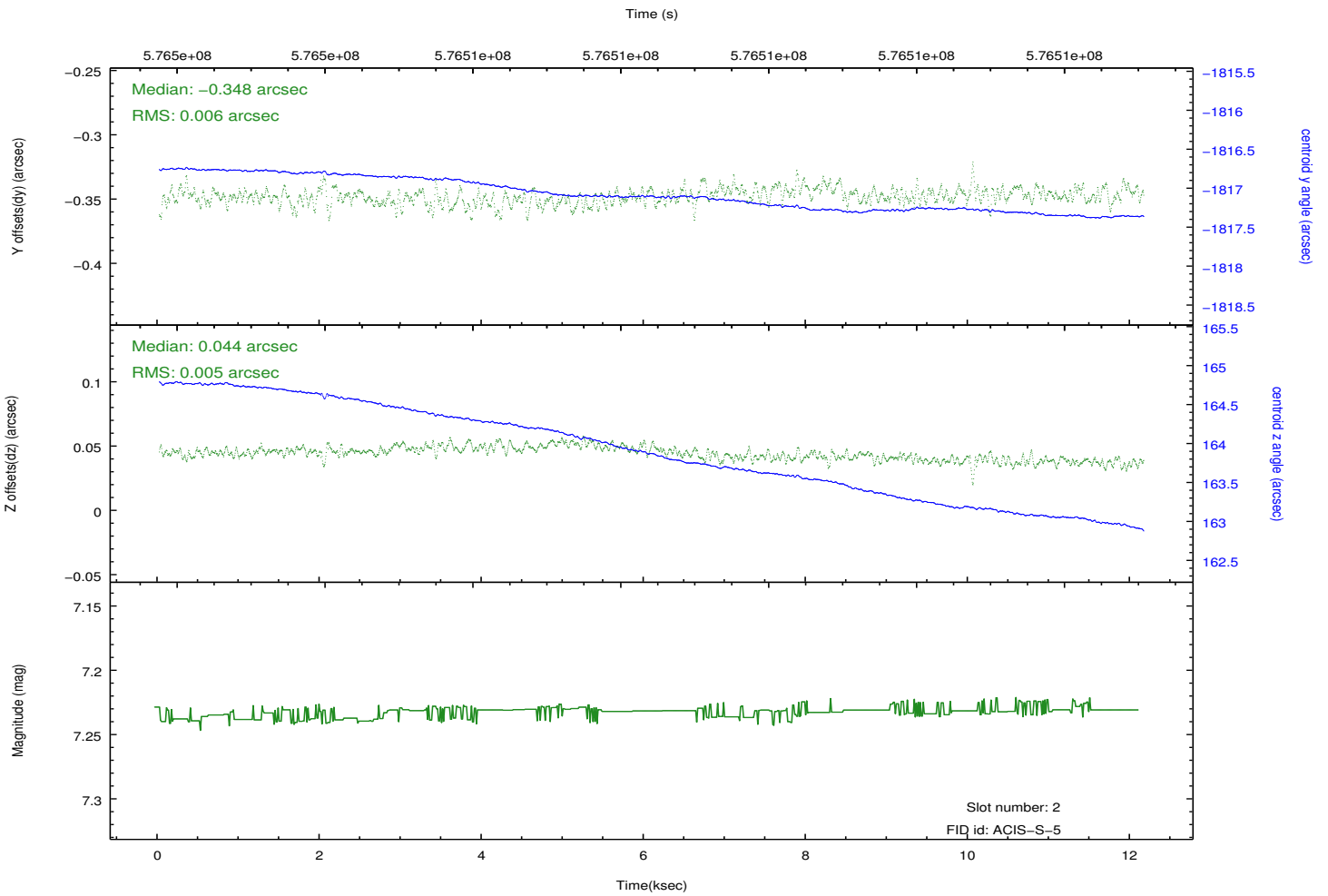
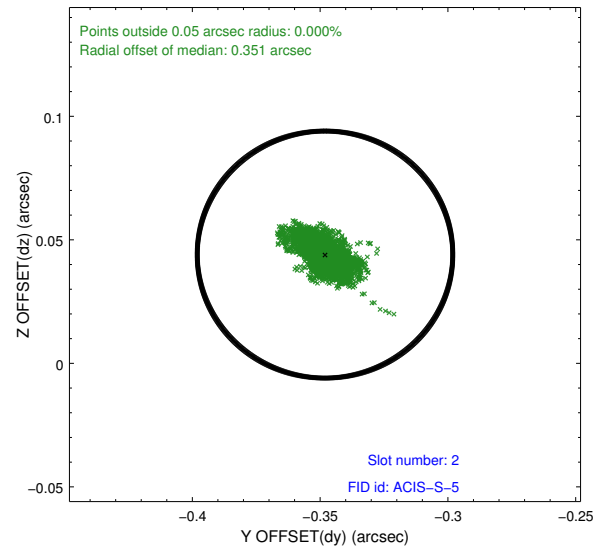
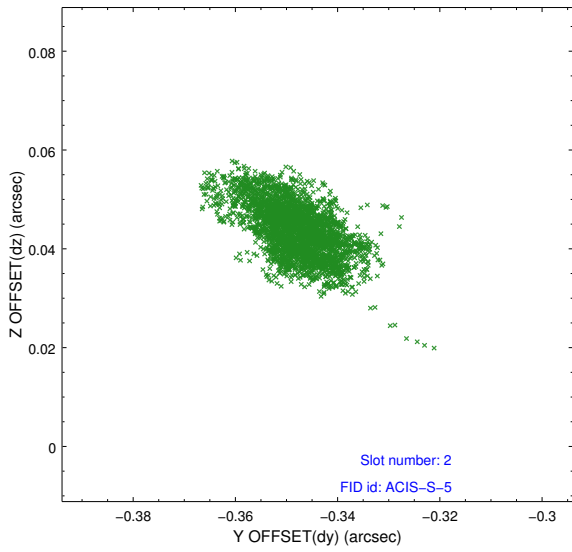
2.5.1 Slot 0



2.5.2 Slot 1



2.5.3 Slot 2



A Summary

A.1 Status

V&V Scientist	Beth Sundheim
V&V Date (YYYY-MM-DD)	2016.04.09
V&V Edition	1
V&V Disposition and Status	OK
V&V Charge Time	12.073783762217

A.2 Comments