

V&V Reference Report

L2 ASCDS Version : 10.4.3.1

Observation 18432 - L2 Version 1
Chandra X-Ray Center

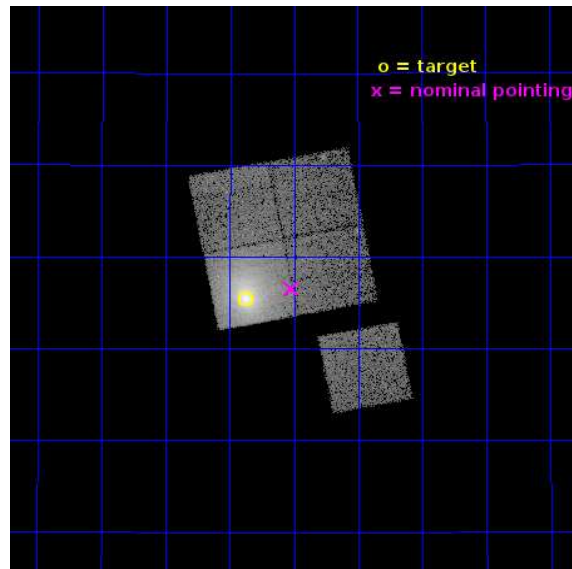
L2 Processing Date : Apr 12 2016

Contents

1	Front	2
2	OBI	3
2.1	OBI	3
2.1.1	Images	3
2.1.2	Bias	3
2.1.3	Parameters	4
2.1.4	Events	4
2.2	Compared Parameters	5
2.3	Aspect	6
2.4	Star Slots	9
2.4.1	Slot 3	9
2.4.2	Slot 4	10
2.4.3	Slot 5	11
2.4.4	Slot 6	12
2.4.5	Slot 7	13
2.5	FID Slots	14
2.5.1	Slot 0	14
2.5.2	Slot 1	15
2.5.3	Slot 2	16
A	Summary	17
A.1	Status	17
A.2	Comments	17

1 Front

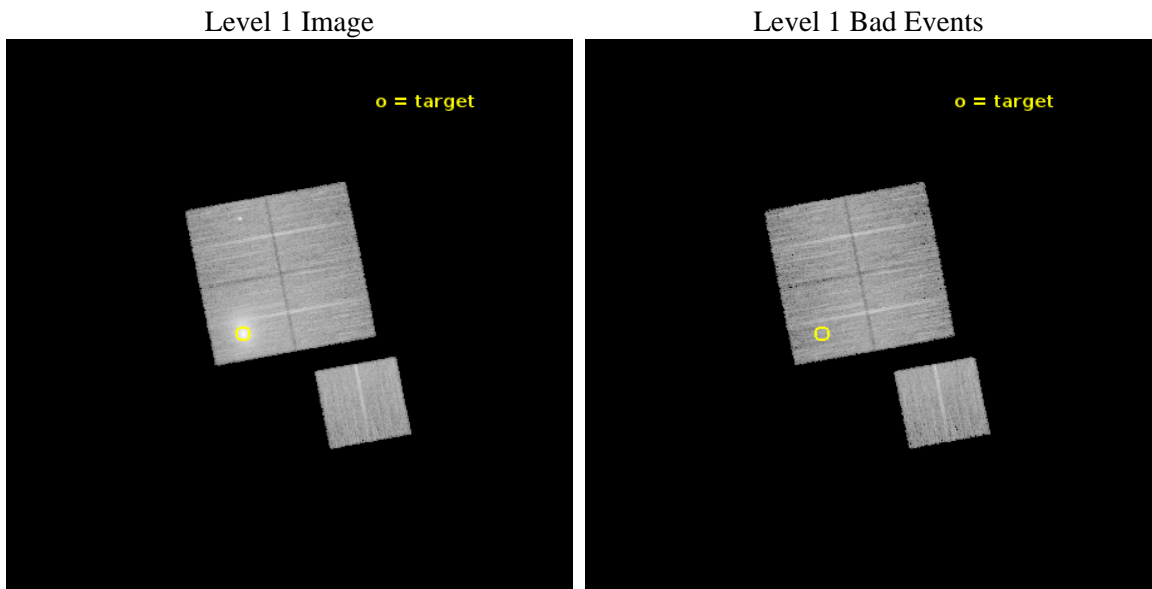
seq_num	890125	Sequence number
obs_id	18432	Observation id
title	AO-17 Calibration Observations of A1795	Proposal title
observer	Dr. CXC Calibration	Principal investigator
object	A1795	Source name
dtcycle	0	
cycle	P	events from which exps? Prim/Second/Both
ra_targ	207.219583	Observer's specified target RA [deg]
dec_targ	26.590833	Observer's specified target Dec [deg]
ra_nom	207.12992308925	Nominal RA [deg]
dec_nom	26.608817625307	Nominal Dec [deg]
roll_nom	169.23960641191	Nominal Roll [deg]
revision	1	Processing version of data
ontime	15075.300116062	Sum of GTIs [s]
livetime	14878.330221771	Livetime [s]
ontime0	15072.159075737	Sum of GTIs [s]
ontime1	15075.300116062	Sum of GTIs [s]
ontime2	15075.300116062	Sum of GTIs [s]
ontime3	15075.300116062	Sum of GTIs [s]
ontime6	15072.159065843	Sum of GTIs [s]
l2events	127245	Number of level 2 events



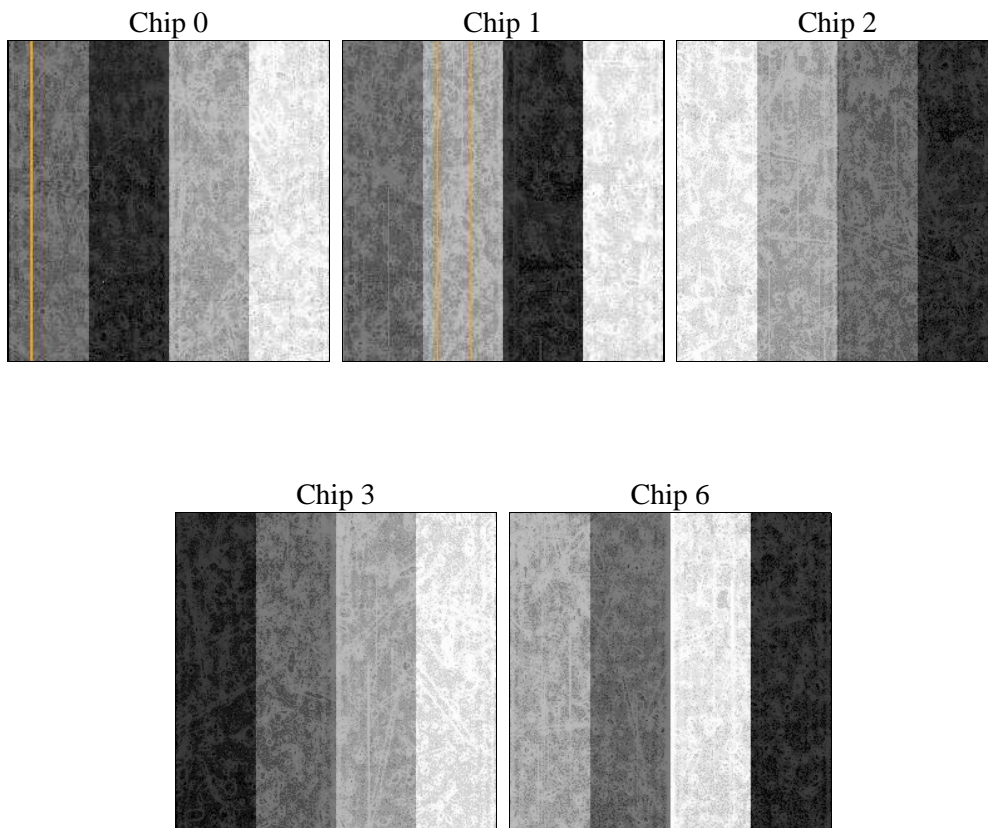
2 OBI

2.1 OBI

2.1.1 Images



2.1.2 Bias



2.1.3 Parameters

obi_num	0	Obi number	sched_exp_time	15000.000000	[s] Scheduled observation exposure time
ascdsver	10.4.3.1	Processing system revision	ontime	15075.300116062	Sum of GTIs [s]
caldbver	4.7.1	 	ontime0	15072.159075737	Sum of GTIs [s]
date	2016-04-12T20:36:30	Date and time of file creation	ontime1	15075.300116062	Sum of GTIs [s]
revision	1	Processing version of data	ontime2	15075.300116062	Sum of GTIs [s]
			ontime3	15075.300116062	Sum of GTIs [s]
			ontime6	15072.159065843	Sum of GTIs [s]
			l1events	535159	Number of level 1 events

2.1.4 Events

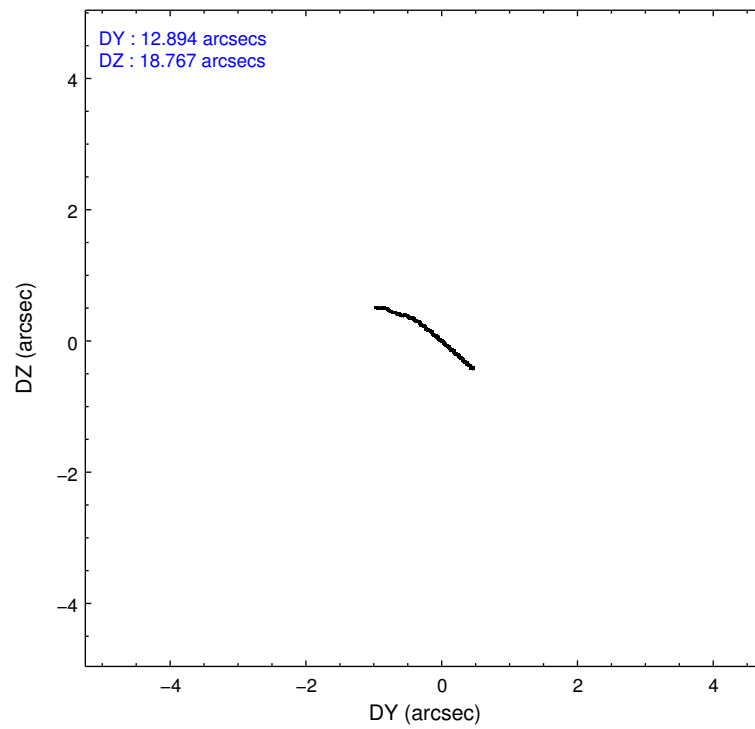
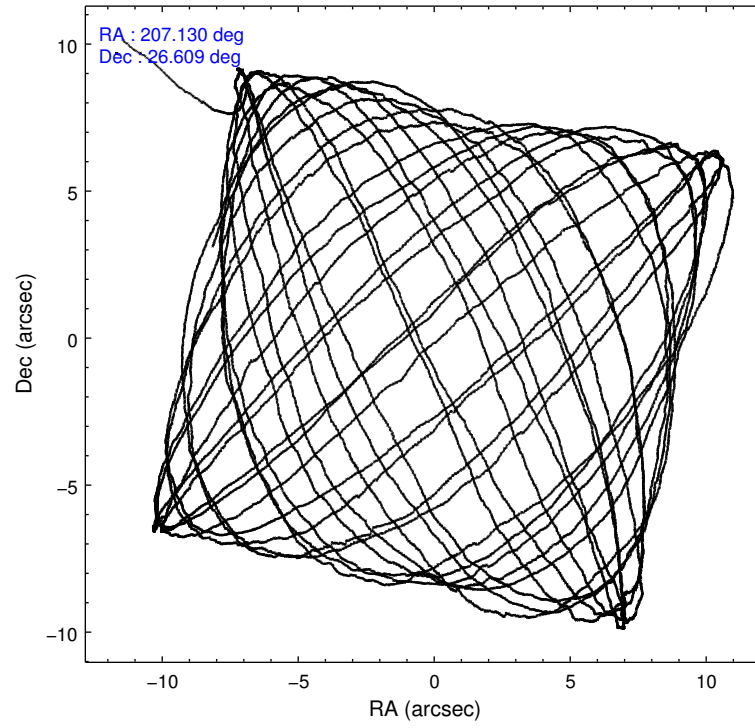
	ccd 0	ccd 1	ccd 2	ccd 3	ccd 6
level 1 events	82352	89758	98389	168728	95932
rejected events	71451	74816	85652	79623	85069
rejected %	86%	83%	87%	47%	88%

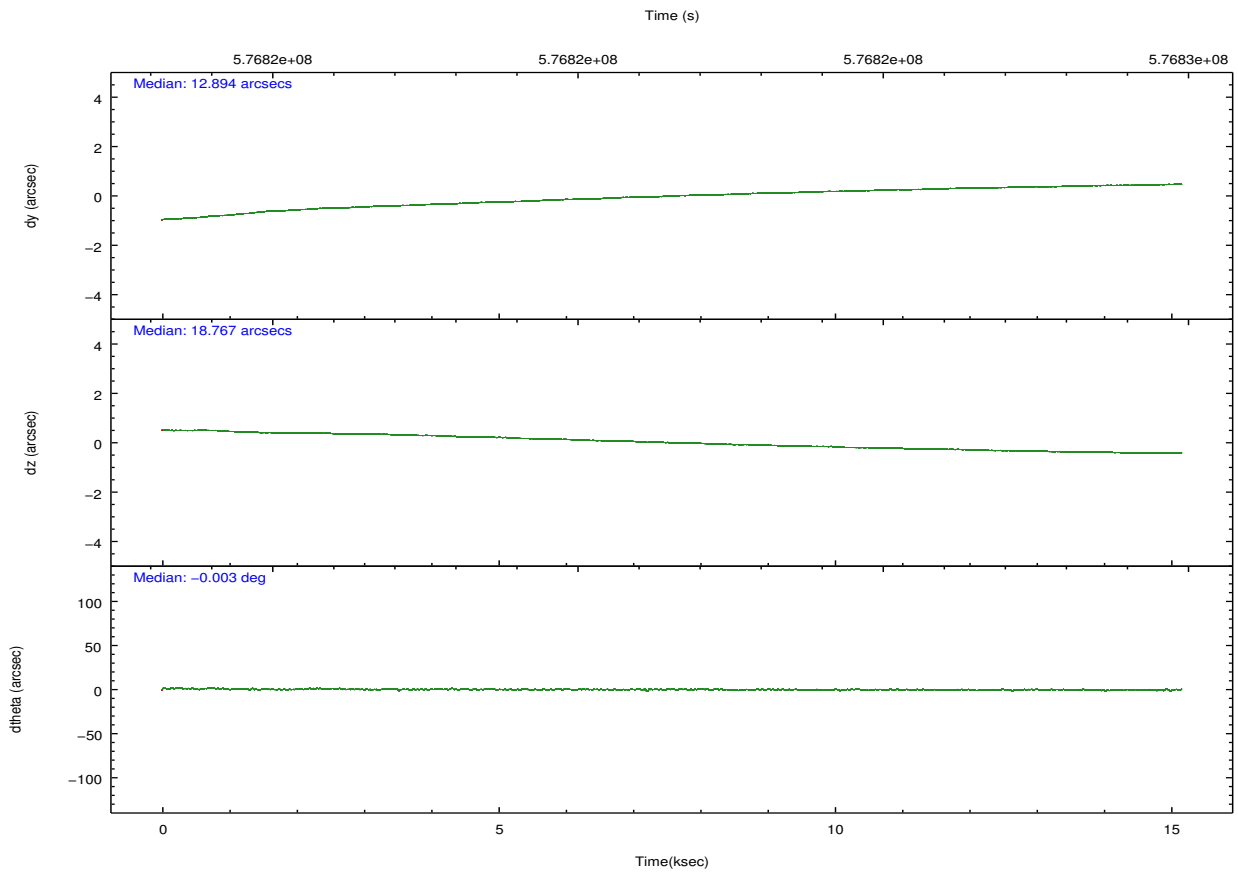
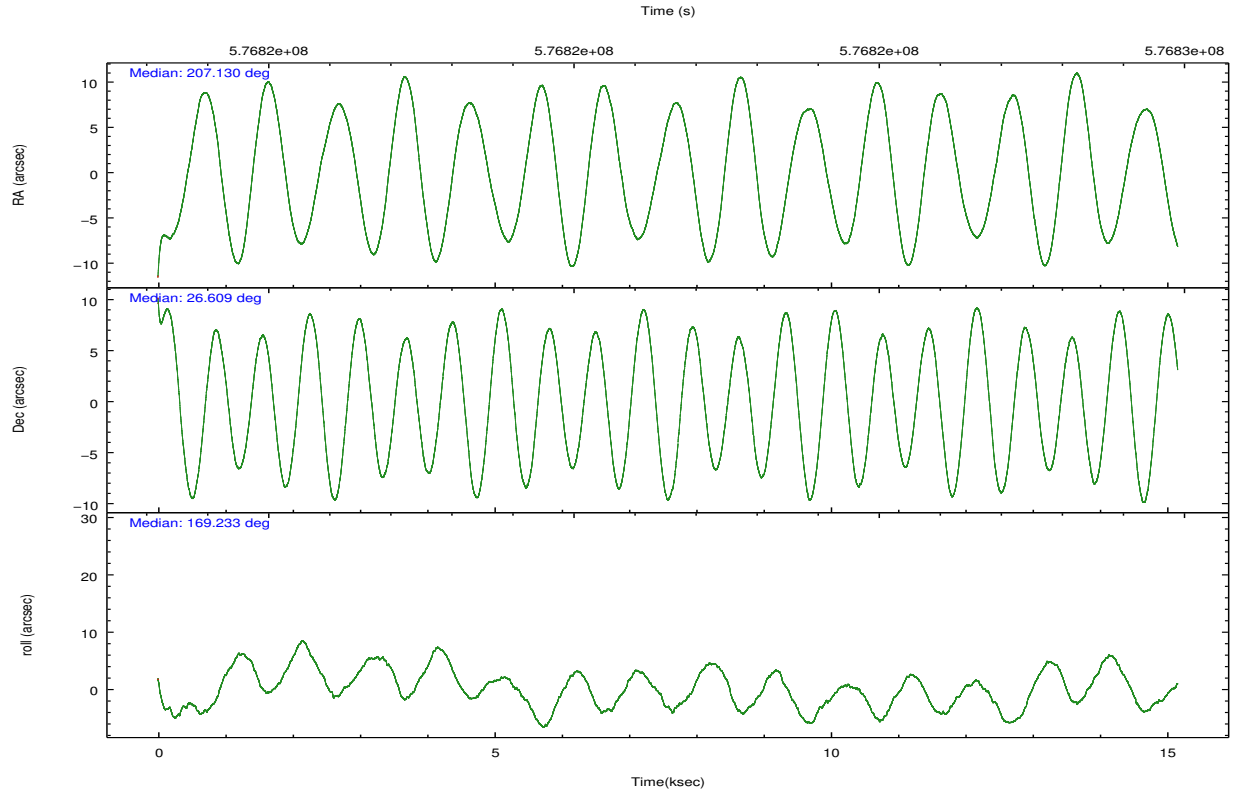
	ccd 0	ccd 1	ccd 2	ccd 3	ccd 6
grade 0 events	3968	6659	5594	66644	3794
	4%	7%	5%	39%	3%
grade 1 events	57	57	53	343	37
	0%	0%	0%	0%	0%
grade 2 events	2707	3247	2954	10641	2512
	3%	3%	3%	6%	2%
grade 3 events	1086	1167	1080	3736	1080
	1%	1%	1%	2%	1%
grade 4 events	977	1247	1086	3679	1080
	1%	1%	1%	2%	1%
grade 5 events	3961	4283	3719	4698	4456
	4%	4%	3%	2%	4%
grade 6 events	2164	2626	2025	4422	2398
	2%	2%	2%	2%	2%
grade 7 events	67432	70472	81878	74565	80575
	81%	78%	83%	44%	83%

2.2 Compared Parameters

Parameter	Planned	Actual	Parameter	Planned	Actual
Instrument	ACIS	ACIS	Obspar format version number	7	7
Detector	ACIS-01236	ACIS-01236	Obspar file type	PREDICTED	ACTUAL
Grating	NONE	NONE	Obspar update status	NONE	UPDATED
Data mode	VFAINT	VFAINT	Number of optional ACIS chips dropped	0	0
Observation mode	POINTING	POINTING	On-chip summing requested	N	N
[deg] Pointing RA	207.159044	207.1299230892465	Subarray requested	NONE	NONE
[deg] Pointing Dec	26.617970	26.6088176253067	Alternating exposures requested	N	N
[deg] Pointing Roll	169.017870	169.2396064119056	[s] Primary exposure time	0.000000	3.1
[s] Window start time (MET)	575856068.184000	575856068.184000			
[s] Window stop time (MET)	578361668.184000	578361668.184000			
[mm] SIM focus pos	-0.782348	-0.7809083437167272			
[mm] SIM defocus	0	0.001439871863259334			
[mm] SIM translation stage pos	-219.472463	-219.4670397272677			
[mm] SIM translation stage offset	-14.12	-14.12541327566197			
[s] Observation start time (MET)	576814098.184000	576812974.67758			
Observation start date	2016-04-12T02:07:10	2016-04-12T01:49:34			
[s] Observation end time (MET)	576829098.184000	576829243.47849			
Observation end date	2016-04-12T06:17:10	2016-04-12T06:20:43			
Read mode	TIMED	TIMED			

2.3 Aspect





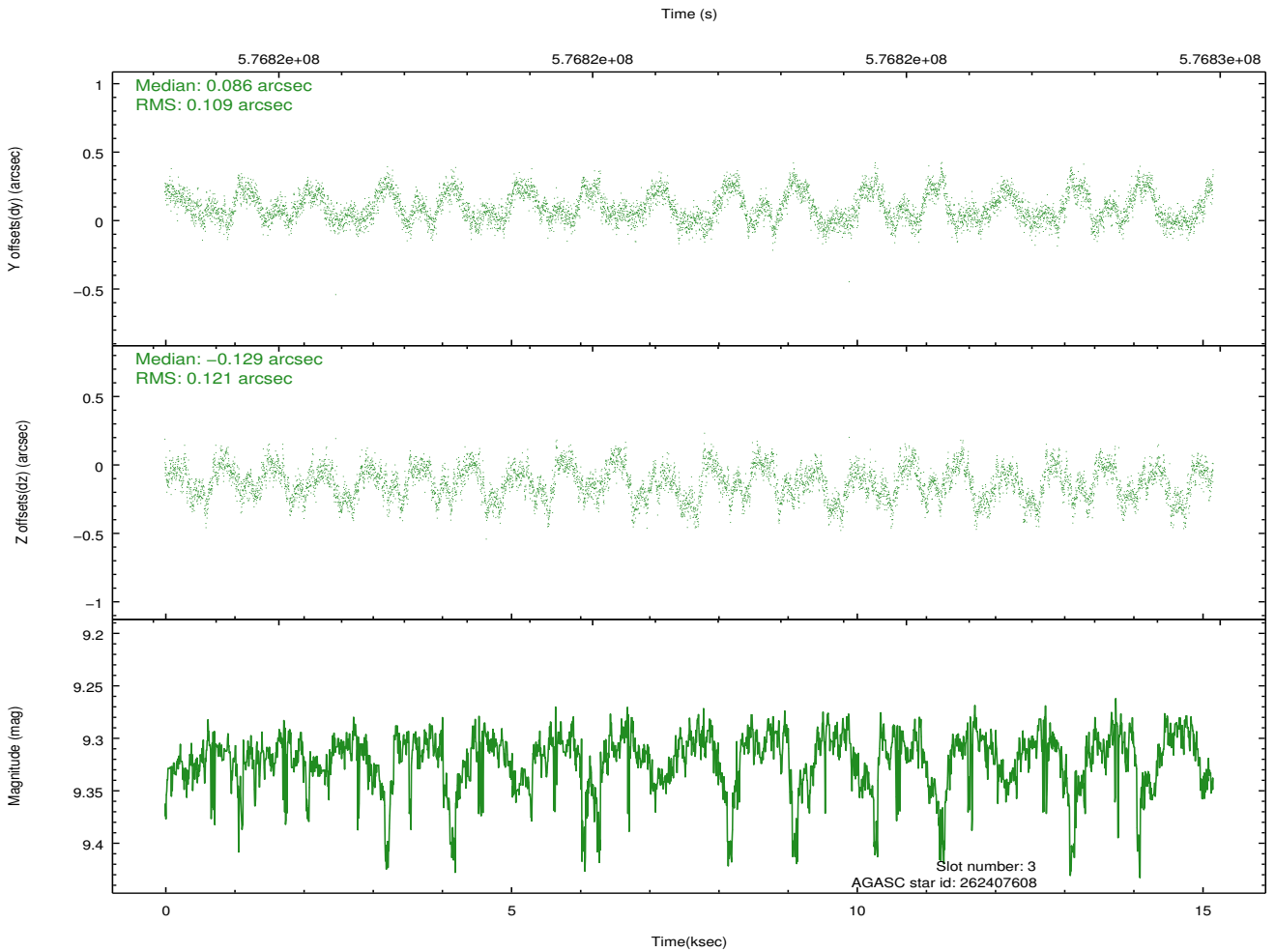
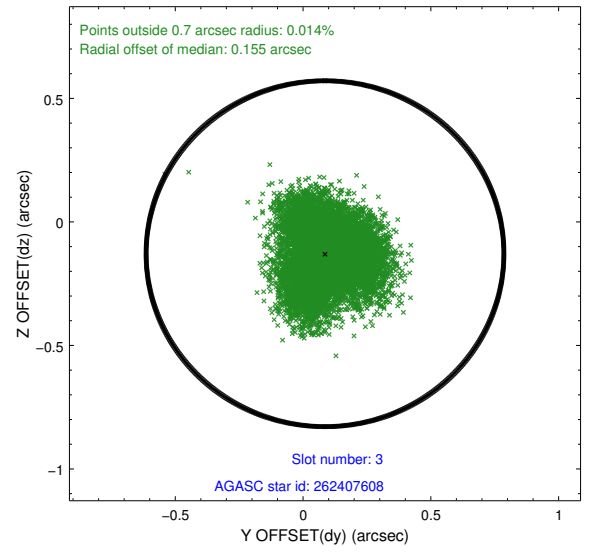
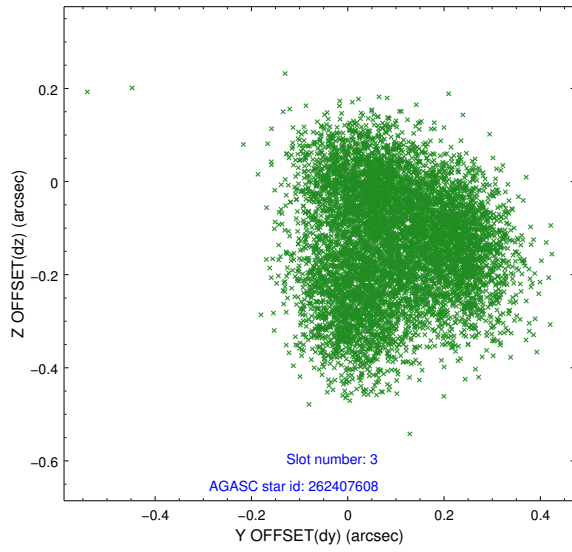
Slot Statistics

slot	status	used	id	mag	n_pts	med_dy	med_dz	dr1	dr2	ra	dec	mean_y	mean_z
0	FID		ACIS-I-1	7.22	3698	0.260	-0.238	0.010	0.019	0.000000	0.000000	926.71	-1132.77
1	FID		ACIS-I-5	7.24	3698	-0.481	0.163	0.016	0.023	0.000000	0.000000	-1822.01	764.83
2	FID		ACIS-I-6	7.27	3698	0.130	0.146	0.020	0.028	0.000000	0.000000	391.75	1409.71
3	GUIDE	used	262407608	9.32	7391	0.086	-0.129	0.179	0.262	207.378401	26.435507	-819.10	509.76
4	GUIDE	used	262408096	9.32	7385	-0.133	-0.191	0.163	0.252	207.011678	26.515421	396.32	452.79
5	GUIDE	used	262408512	7.99	7394	0.063	0.187	0.084	0.135	207.800210	27.128796	-1664.74	-2201.32
6	GUIDE	used	262408936	9.66	7382	-0.126	0.139	0.185	0.290	207.154731	26.726554	87.72	-380.69
7	GUIDE	used	262409552	8.18	7390	0.101	0.004	0.133	0.195	206.584269	27.192805	2202.57	-1684.13

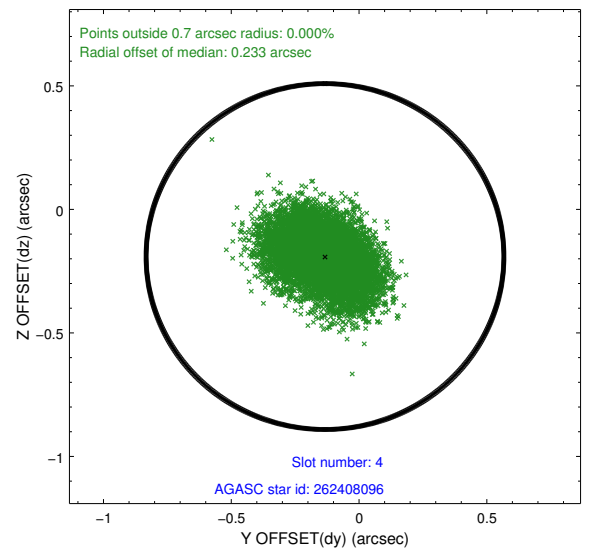
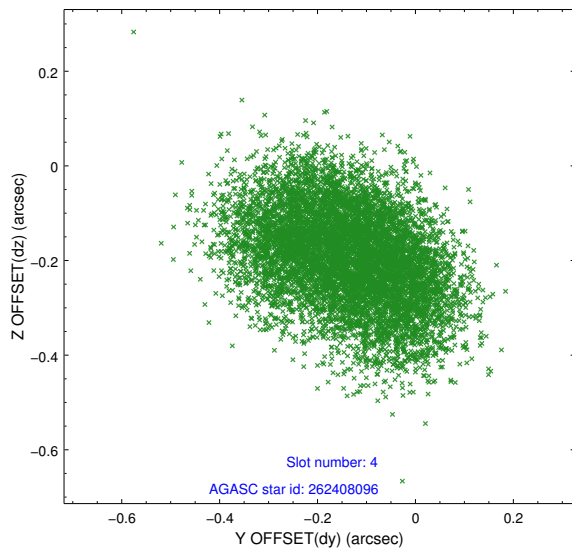
∞

2.4 Star Slots

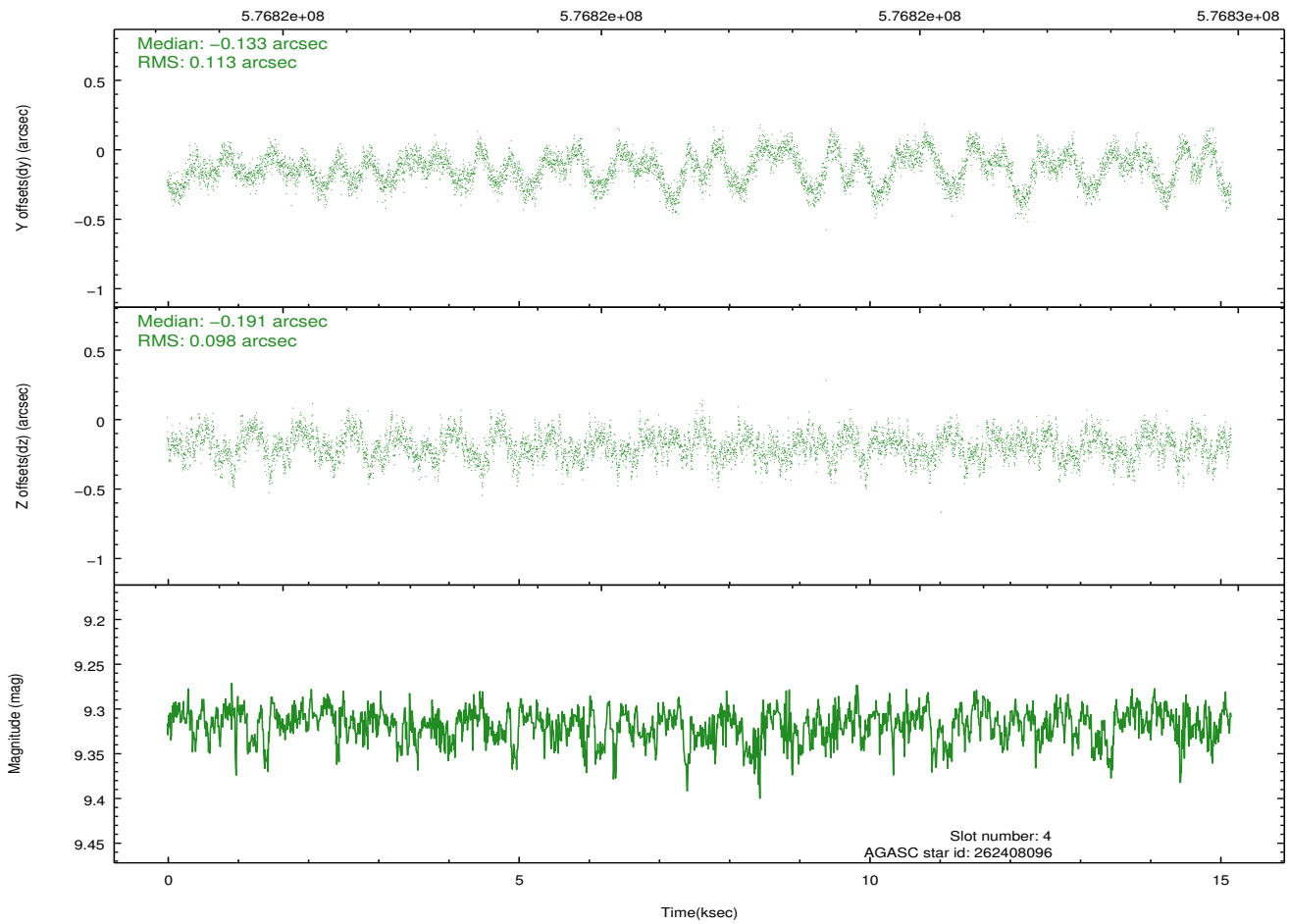
2.4.1 Slot 3



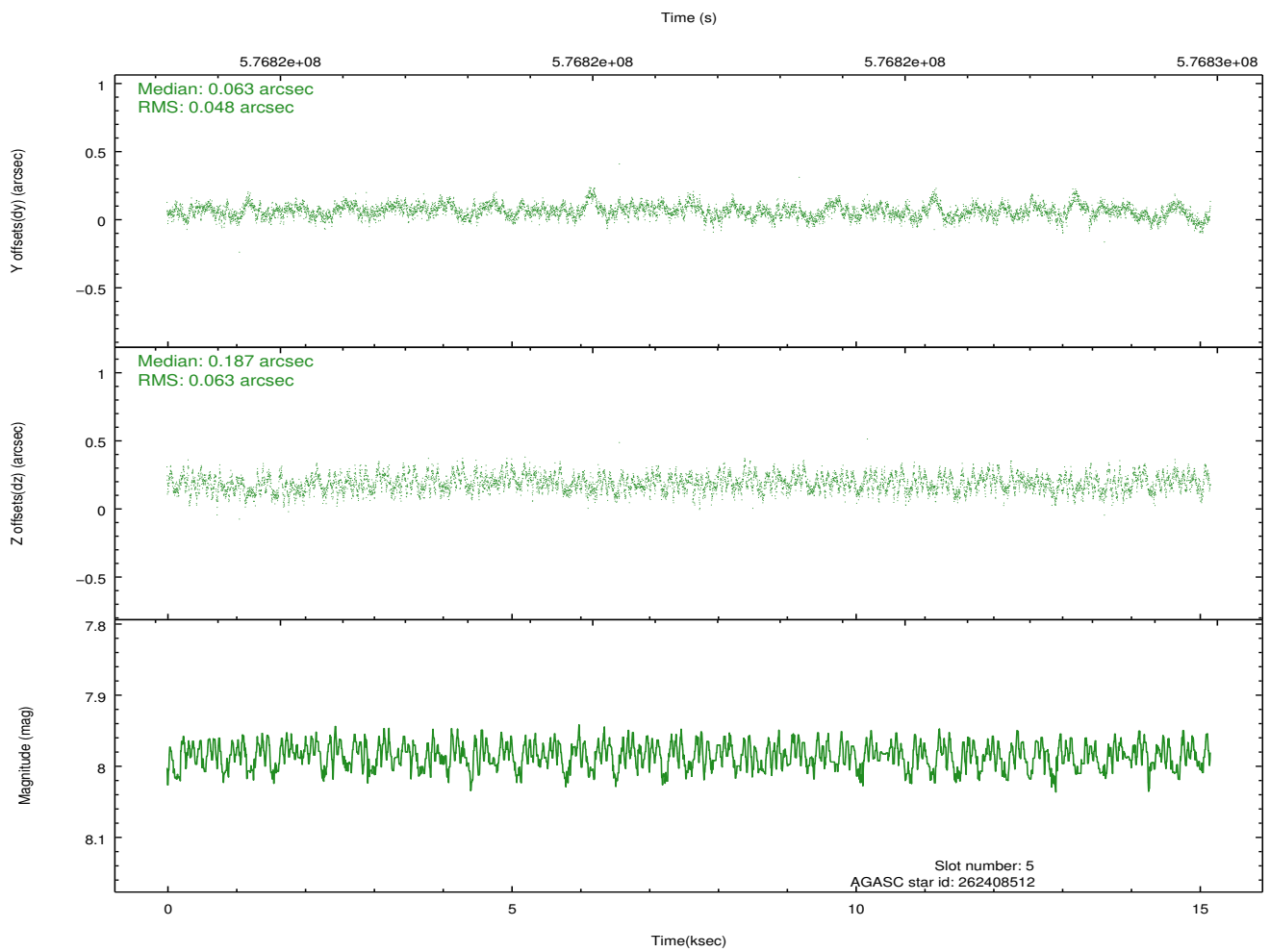
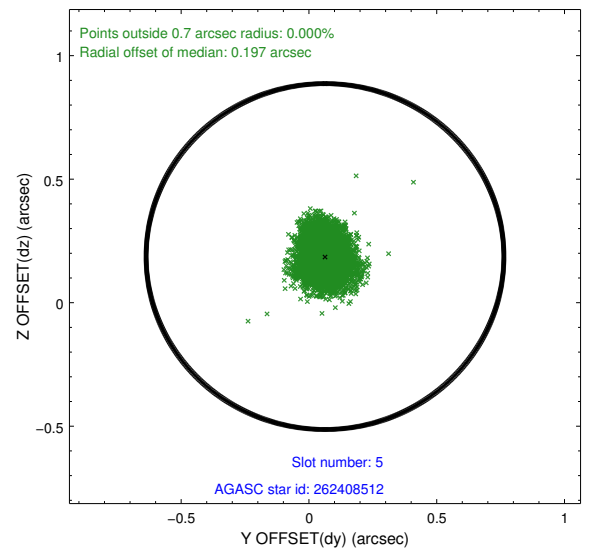
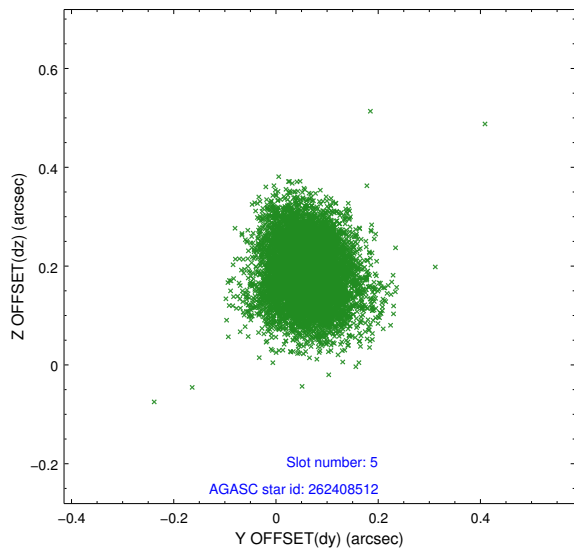
2.4.2 Slot 4



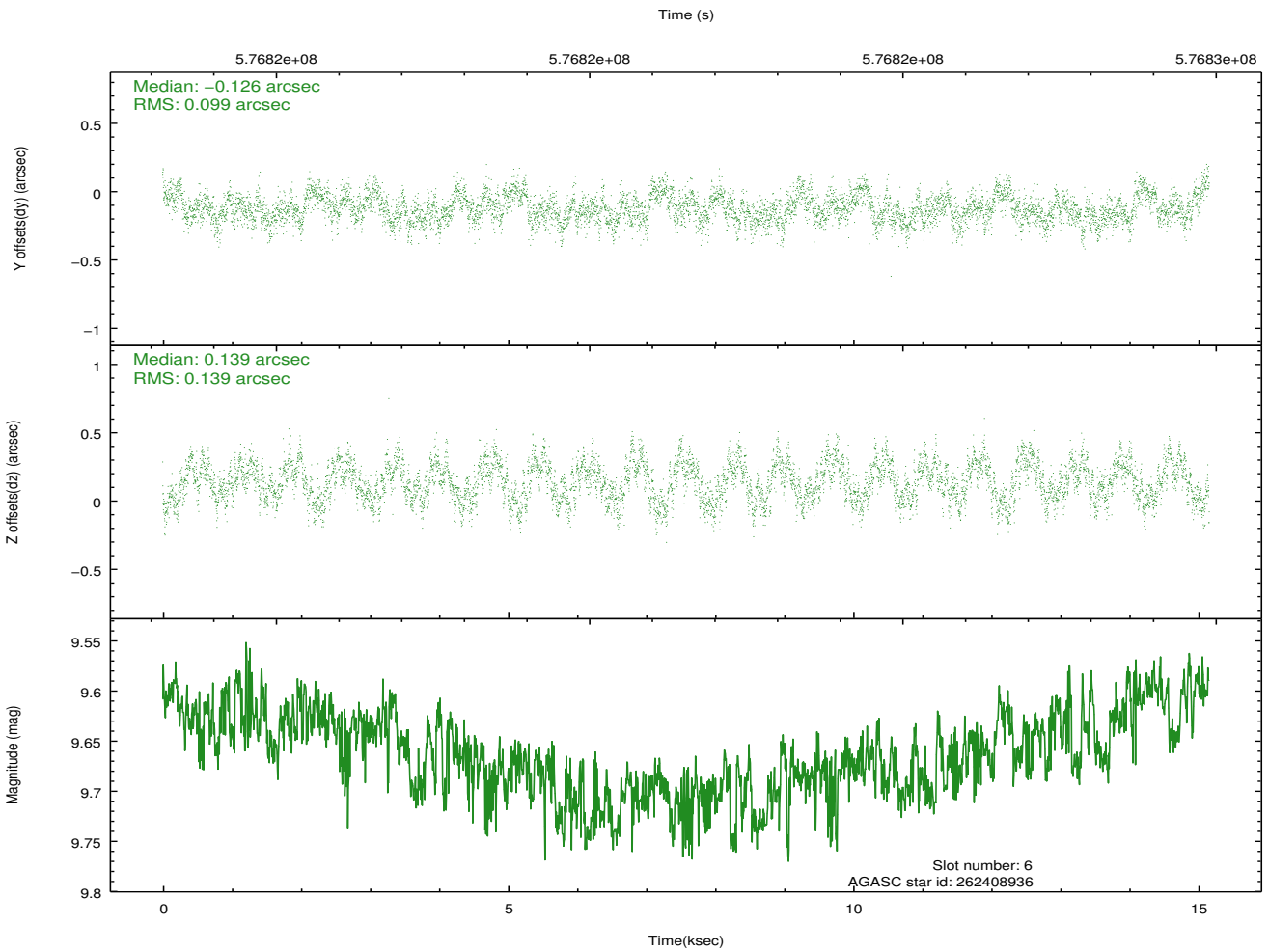
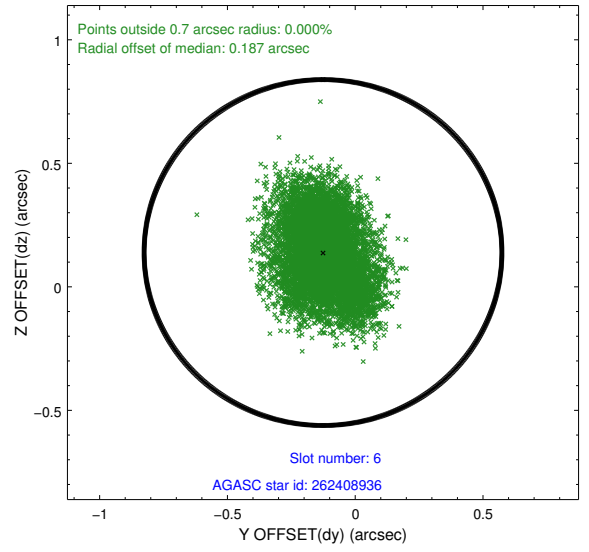
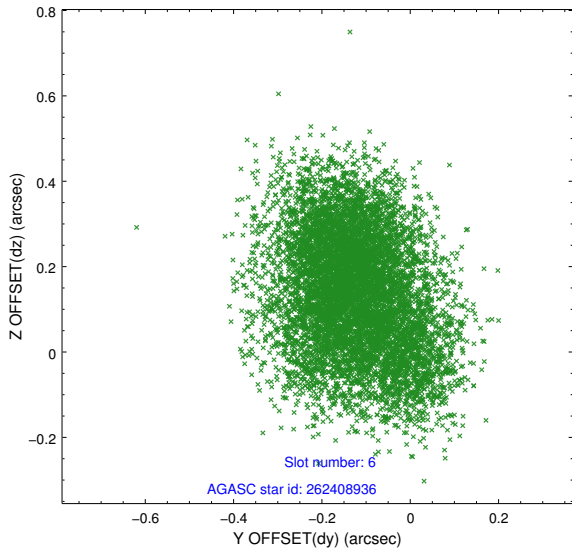
Time (s)



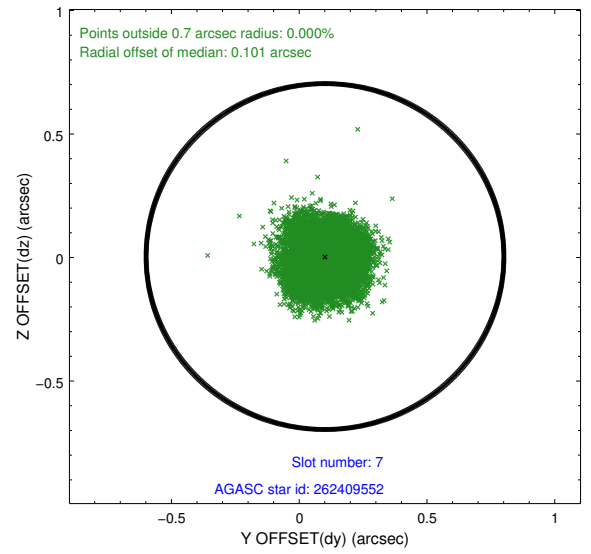
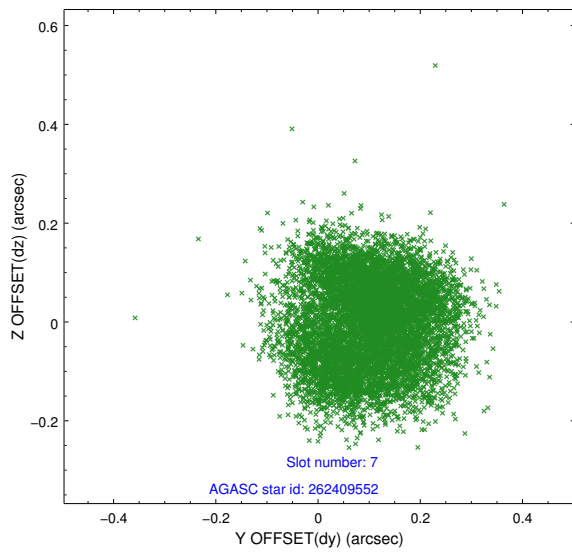
2.4.3 Slot 5



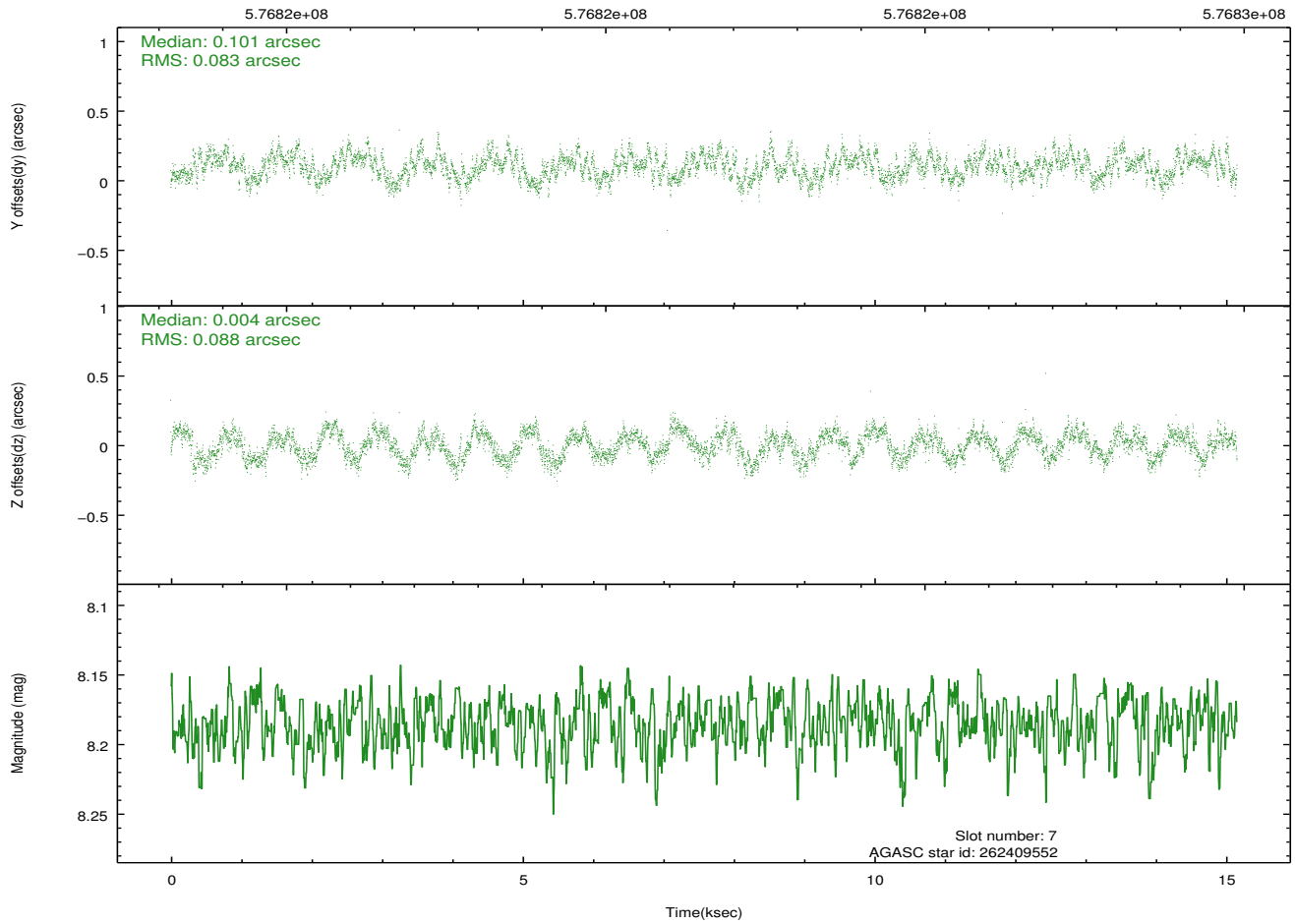
2.4.4 Slot 6



2.4.5 Slot 7

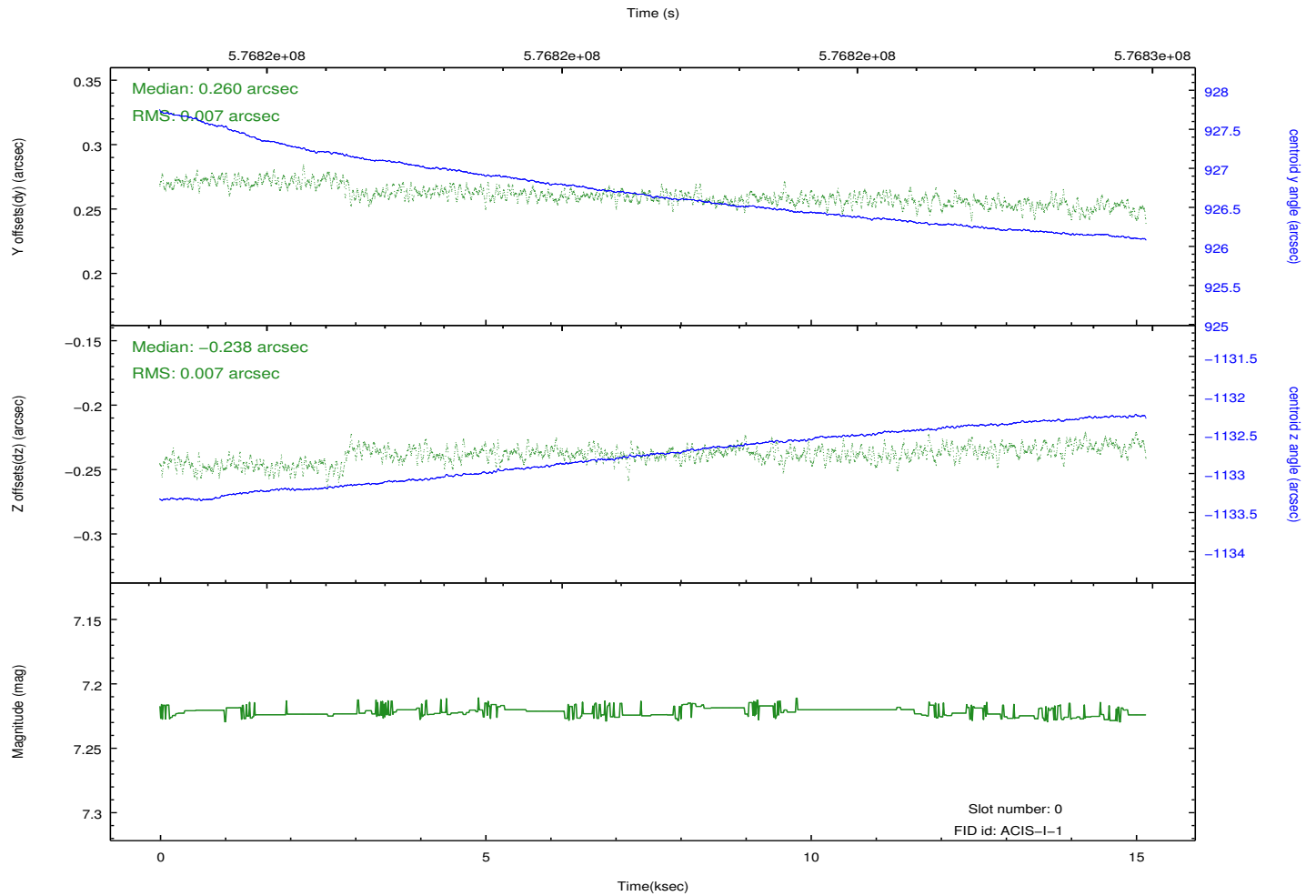
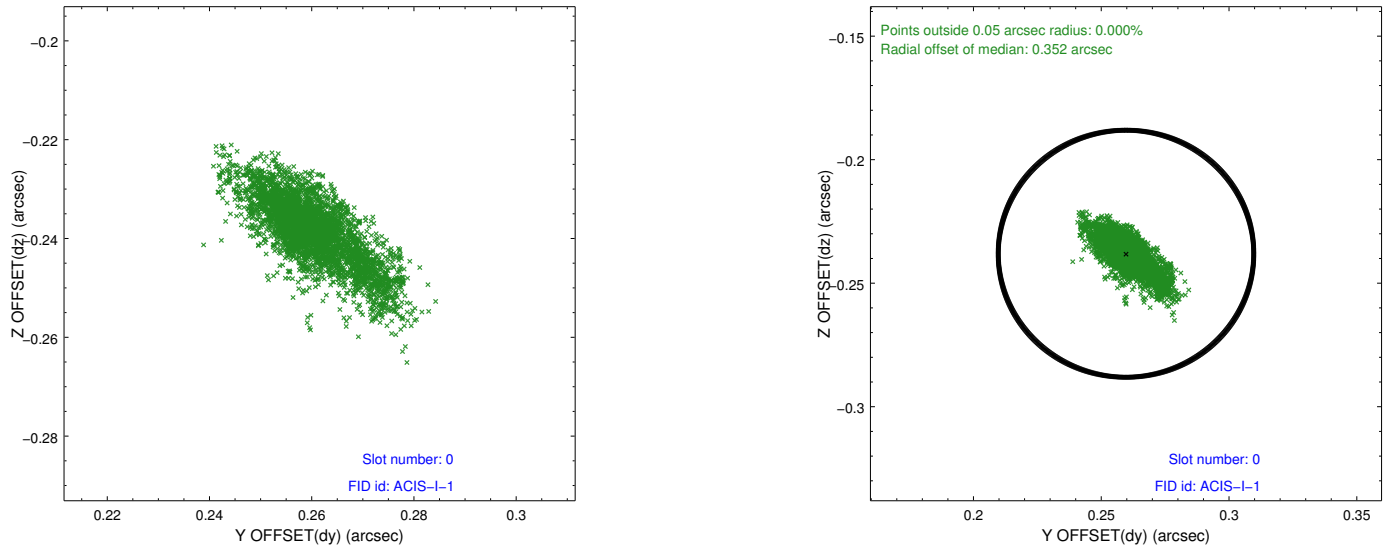


Time (s)

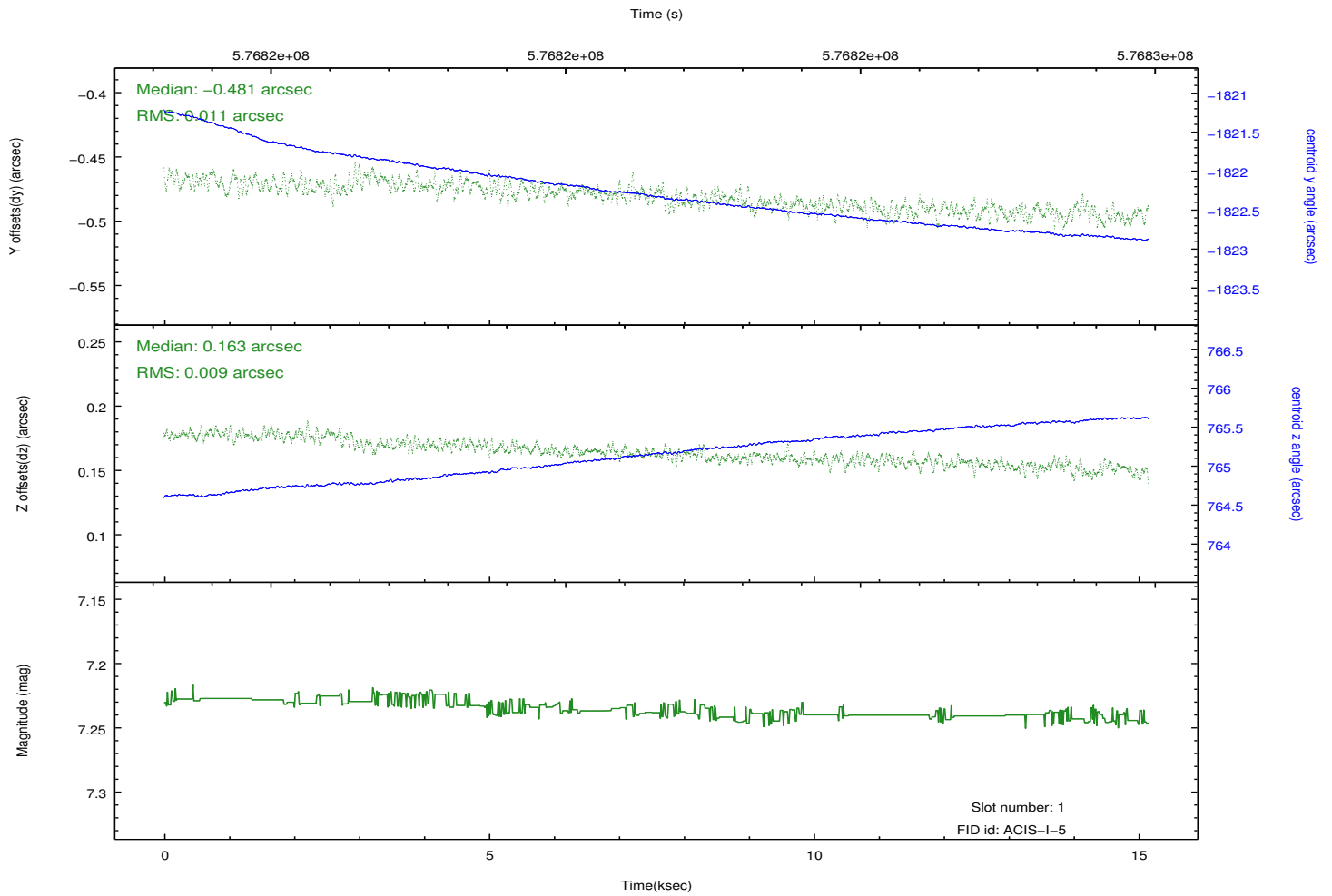
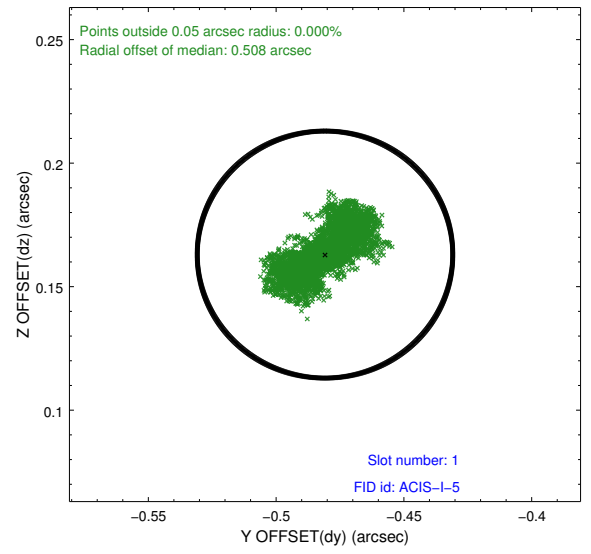
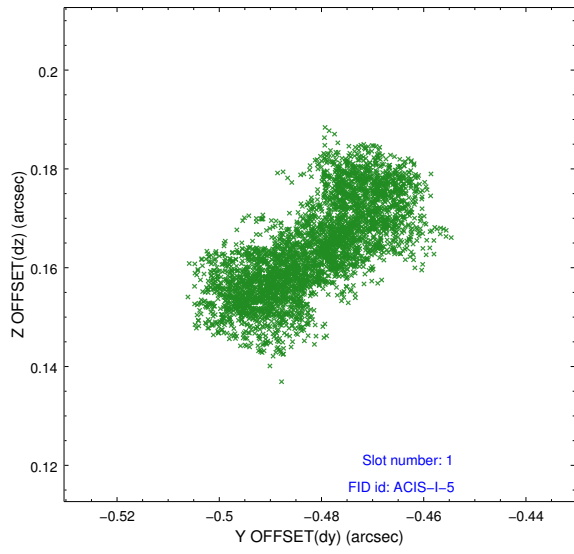


2.5 FID Slots

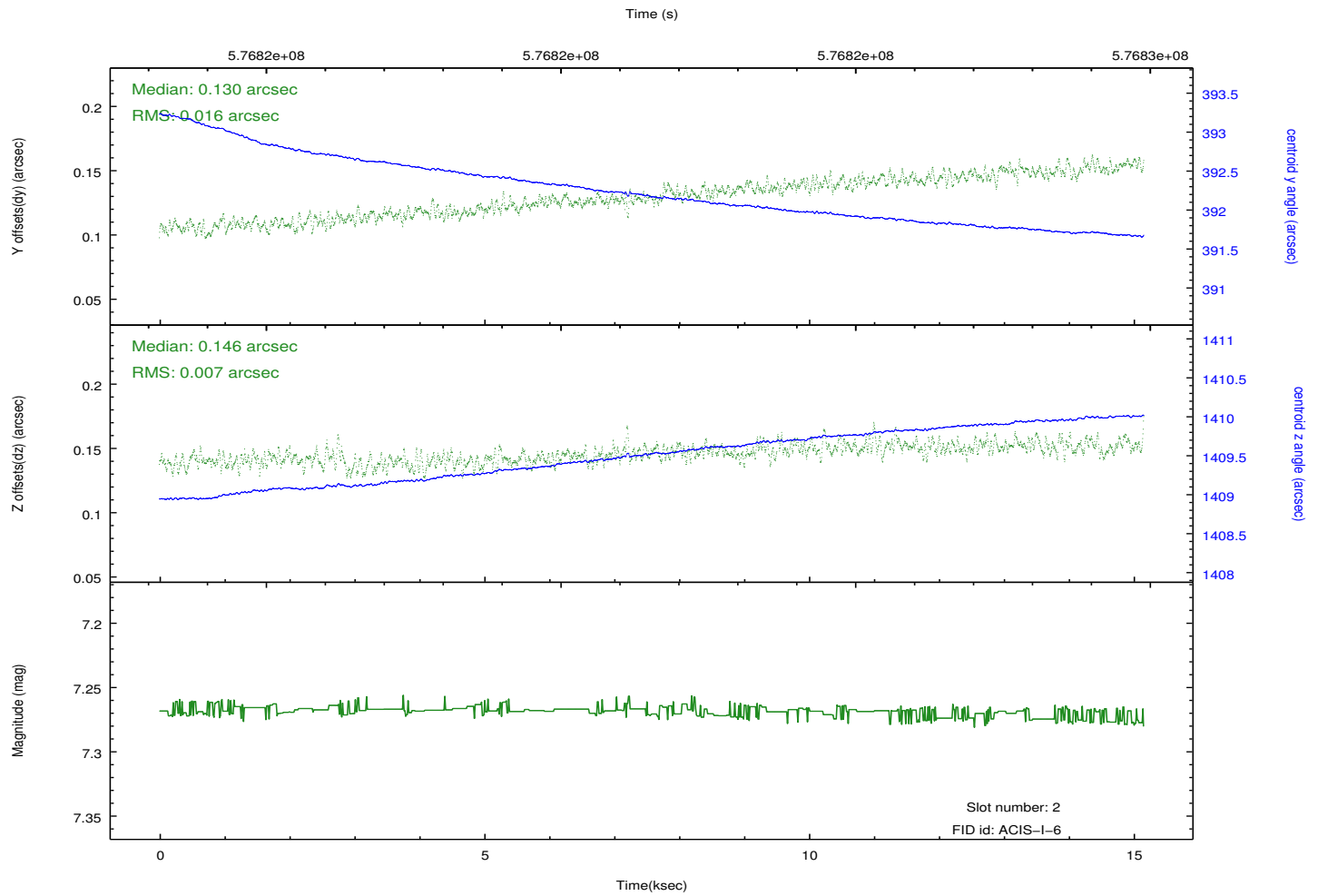
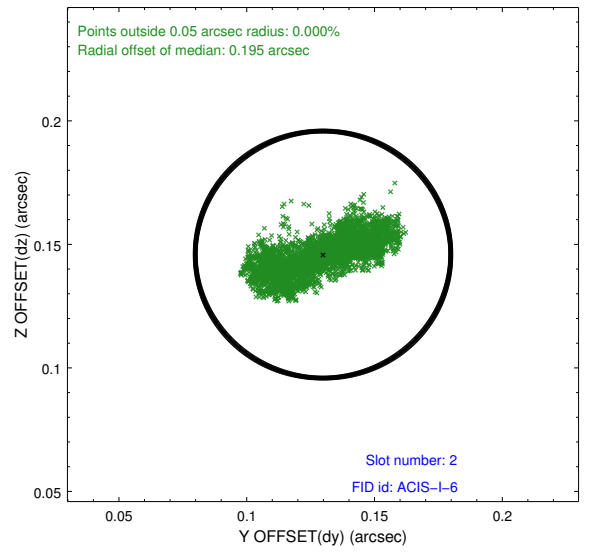
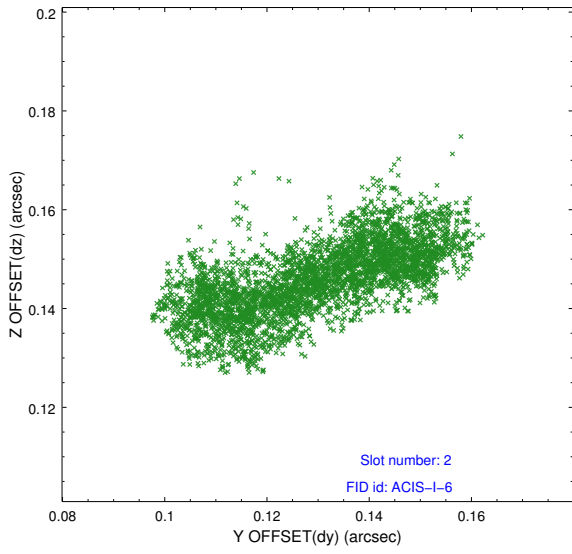
2.5.1 Slot 0



2.5.2 Slot 1



2.5.3 Slot 2



A Summary

A.1 Status

V&V Scientist	Joy Nichols
V&V Date (YYYY-MM-DD)	2016.04.13
V&V Edition	1
V&V Disposition and Status	OK
V&V Charge Time	15.075300116062

A.2 Comments