

V&V Reference Report

L2 ASCDS Version : 8.4.5

Observation 2022 - L2 Version 3
Chandra X-Ray Center

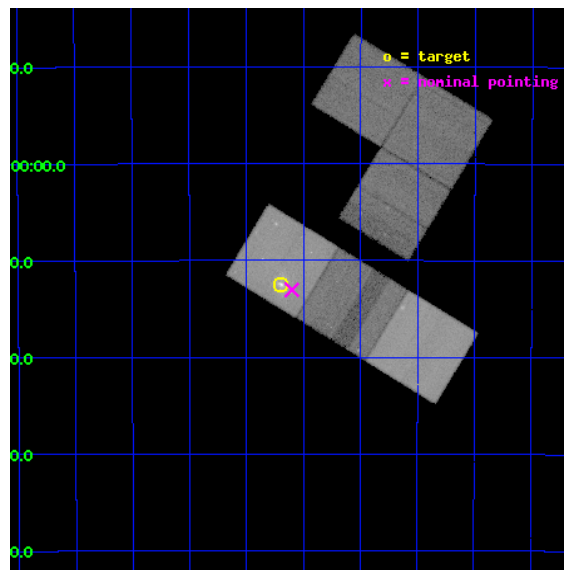
L2 Processing Date : Sep 15 2012

Contents

1	Front	2
2	OBI	3
2.1	OBI	3
2.1.1	Images	3
2.1.2	Bias	3
2.1.3	Parameters	4
2.1.4	Events	4
2.2	Compared Parameters	5
2.3	Aspect	6
2.4	Star Slots	9
2.4.1	Slot 3	9
2.4.2	Slot 4	10
2.4.3	Slot 5	11
2.4.4	Slot 6	12
2.4.5	Slot 7	13
2.5	FID Slots	14
2.5.1	Slot 0	14
2.5.2	Slot 1	15
2.5.3	Slot 2	16
A	Summary	17
A.1	Status	17
A.2	Comments	17

1 Front

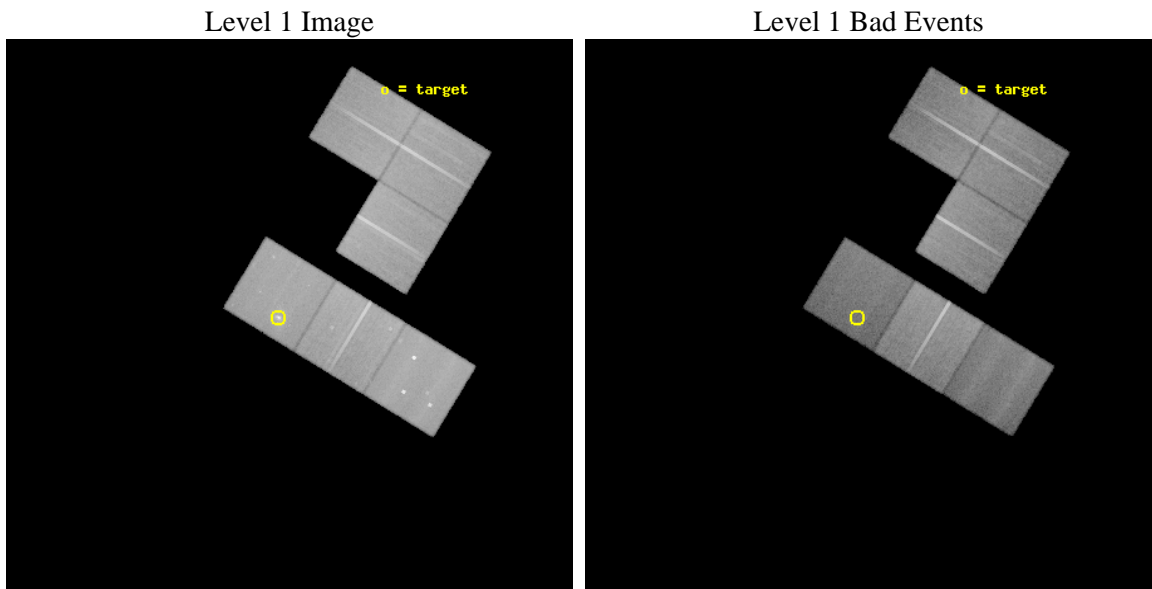
seq_num	600156	Sequence number
obs_id	2022	Observation id
title	THE X-RAY STRUCTURE OF THE ARCHETYPAL MERGER NGC 1316	Proposal tit
observer	Dr Dong-Woo Kim	Principal investigator
object	NGC 1316	Source name
dtycle	0	
cycle	P	events from which exps? Prim/Second/Both
ra_targ	50.67375	Observer's specified target RA [deg]
dec_targ	-37.208056	Observer's specified target Dec [deg]
ra_nom	50.650269321164	Nominal RA [deg]
dec_nom	-37.217348503734	Nominal Dec [deg]
roll_nom	211.33702170433	Nominal Roll [deg]
revision	3	Processing version of data
ontime	30233.600028142	Sum of GTIs [s]
livetime	29850.763980098	Livetime [s]
ontime0	30233.600028142	Sum of GTIs [s]
ontime1	30233.600028142	Sum of GTIs [s]
ontime2	30233.600028142	Sum of GTIs [s]
ontime5	30233.600028142	Sum of GTIs [s]
ontime6	30233.600028142	Sum of GTIs [s]
ontime7	30233.600028142	Sum of GTIs [s]
l2events	538151	Number of level 2 events



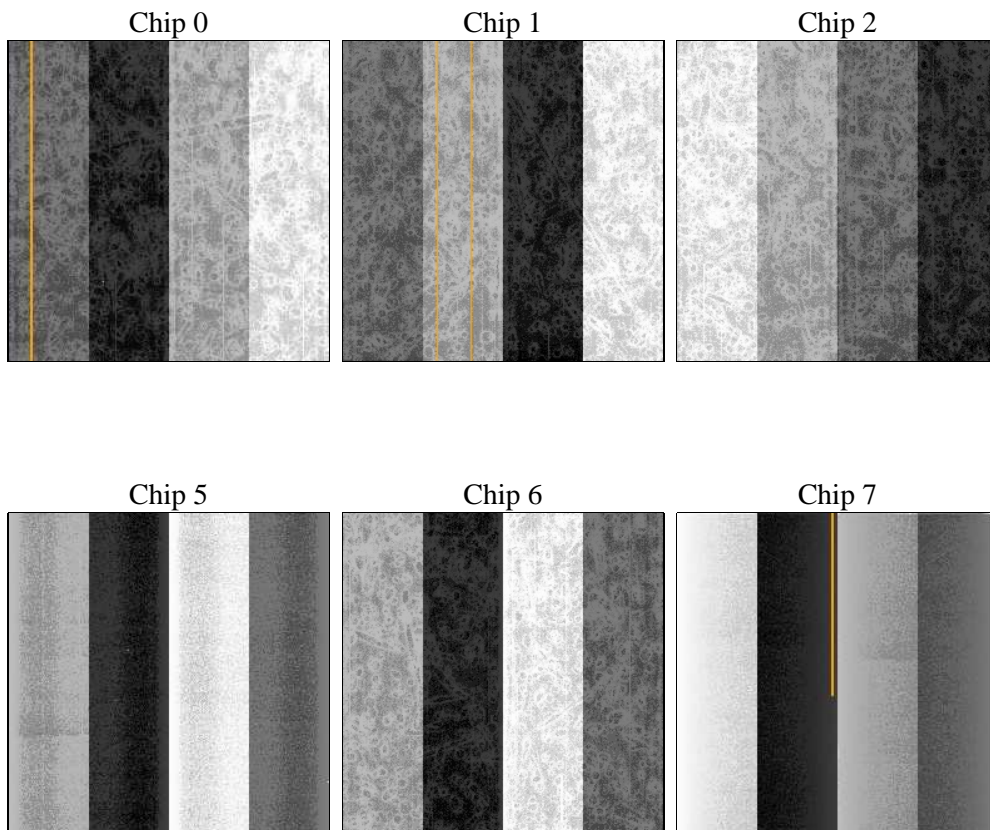
2 OBI

2.1 OBI

2.1.1 Images



2.1.2 Bias



2.1.3 Parameters

obi_num	1	Obi number	sched_exp_time	30111.197000	[s] Scheduled observation exposure time
ascdsver	8.4.5	Processing system revision	ontime	30233.600028142	Sum of GTIs [s]
caldbver	4.5.1.1	 	ontime0	30233.600028142	Sum of GTIs [s]
date	2012-09-15T15:12:30	Date and time of file creation	ontime1	30233.600028142	Sum of GTIs [s]
revision	3	Processing version of data	ontime2	30233.600028142	Sum of GTIs [s]
			ontime5	30233.600028142	Sum of GTIs [s]
			ontime6	30233.600028142	Sum of GTIs [s]
			ontime7	30233.600028142	Sum of GTIs [s]
			l1events	2086965	Number of level 1 events

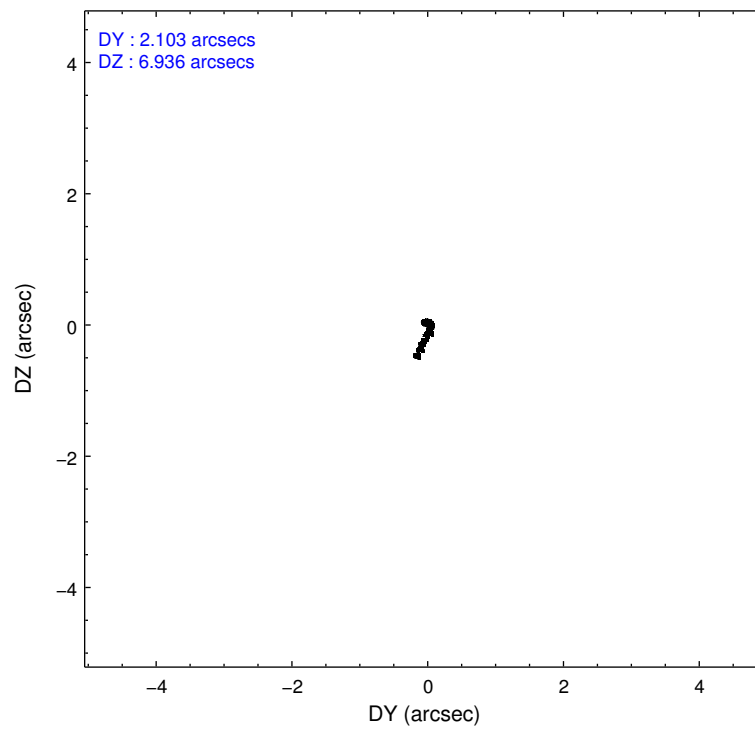
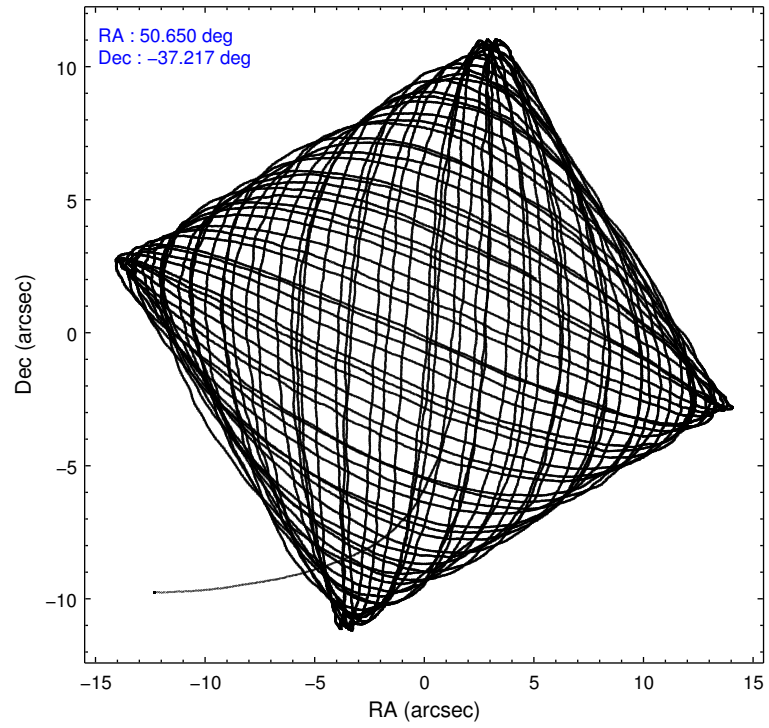
2.1.4 Events

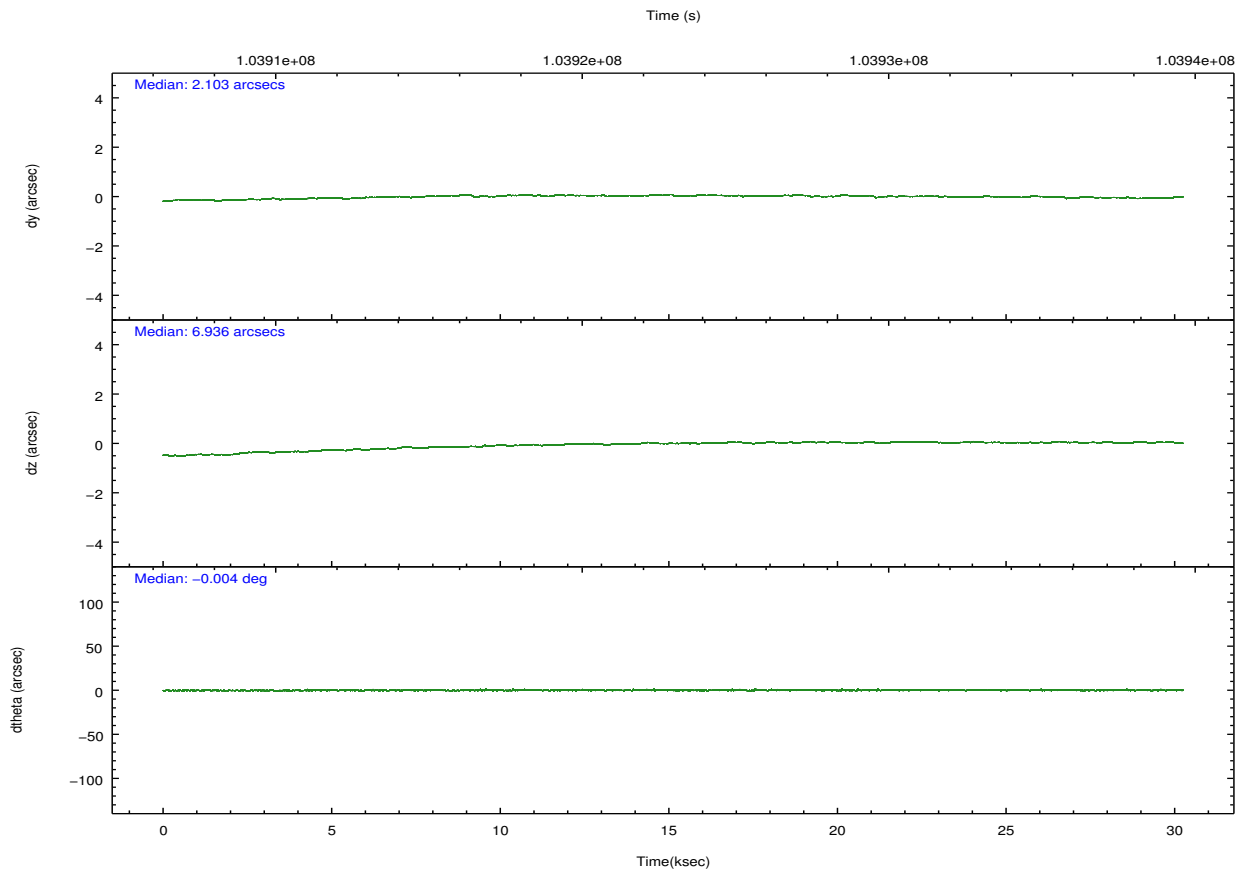
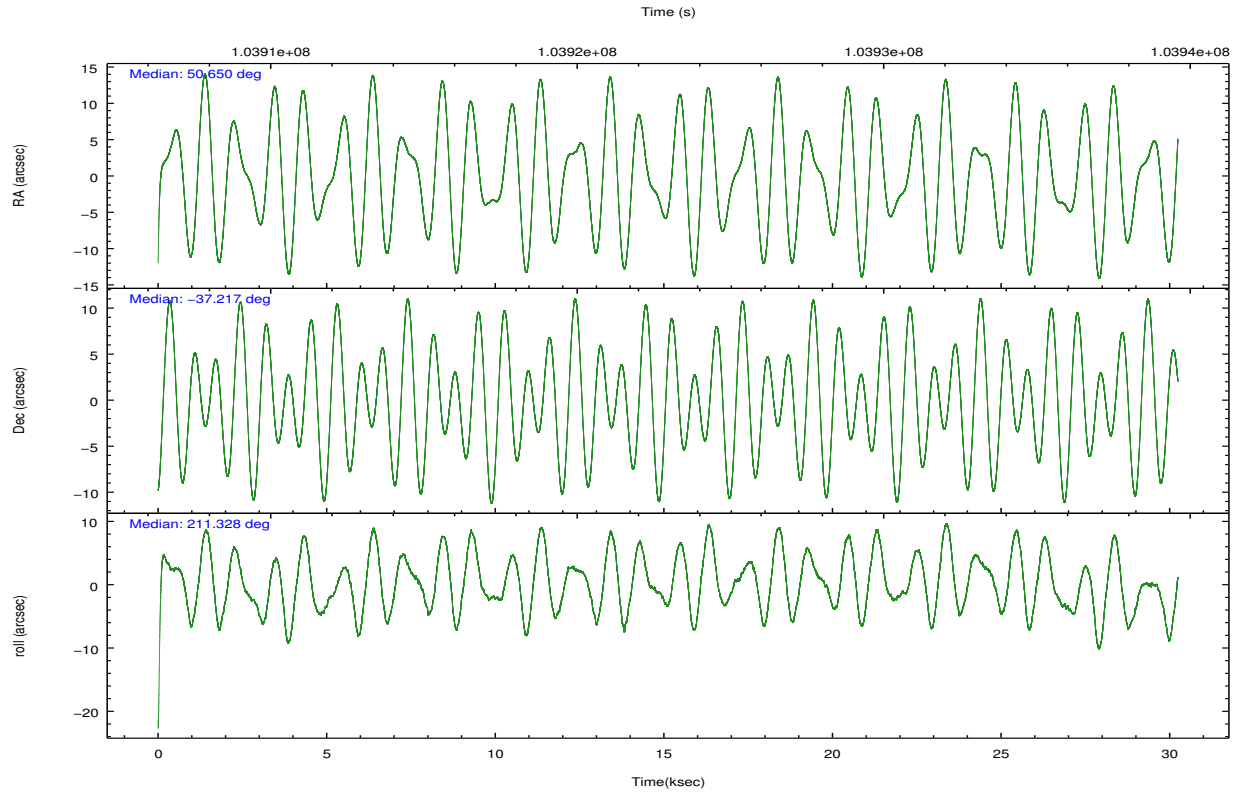
	ccd 0	ccd 1	ccd 2	ccd 5	ccd 6	ccd 7		ccd 0	ccd 1	ccd 2	ccd 5	ccd 6	ccd 7
level 1 events	331773	322523	366364	370101	365495	330709	grade 0 events	28256	25729	29635	34839	29323	23944
rejected events	271163	262912	306302	176358	303140	158856		8%	7%	8%	9%	8%	7%
rejected %	81%	81%	83%	47%	82%	48%	grade 1 events	233	184	248	913	247	433
								0%	0%	0%	0%	0%	0%
							grade 2 events	16131	16658	14400	59432	17183	39070
								4%	5%	3%	16%	4%	11%
							grade 3 events	3554	3986	3137	10559	3527	16217
								1%	1%	0%	2%	0%	4%
							grade 4 events	3810	3864	4122	10315	3556	16034
								1%	1%	1%	2%	0%	4%
							grade 5 events	7327	7374	6736	24056	8155	25841
								2%	2%	1%	6%	2%	7%
							grade 6 events	10406	10974	10361	83785	10419	80974
								3%	3%	2%	22%	2%	24%
							grade 7 events	262056	253754	297725	146202	293085	128196
								78%	78%	81%	39%	80%	38%

2.2 Compared Parameters

Parameter	Planned	Actual	Parameter	Planned	Actual
Instrument	ACIS	ACIS	Obspar format version number	7	7
Detector	ACIS-012567	ACIS-012567	Obspar file type	PREDICTED	ACTUAL
Grating	NONE	NONE	Obspar update status	NONE	UPDATED
Data mode	FAINT	FAINT	Number of optional ACIS chips dropped	0	0
Observation mode	POINTING	POINTING	On-chip summing requested	N	N
[deg] Pointing RA	50.666429	50.65026932116413	Subarray requested	NONE	NONE
[deg] Pointing Dec	-37.193281	-37.2173485037341	Alternating exposures requested	N	N
[deg] Pointing Roll	211.190172	211.3370217043305	[s] Primary exposure time	0.000000	3.2
[mm] SIM focus pos	-0.684267	-0.6828225247311905			
[mm] SIM defocus	0	0.001444936568705701			
[mm] SIM translation stage pos	-184.132523	-184.1283381638419			
[mm] SIM translation stage offset	-6	-6.004184419165881			
[s] Observation start time (MET)	103907973.184000	103906510.16913			
Observation start date	2001-04-17T15:18:29	2001-04-17T14:55:10			
[s] Observation end time (MET)	103938085.184000	103938399.45787			
Observation end date	2001-04-17T23:40:21	2001-04-17T23:46:39			
Read mode	TIMED	TIMED			

2.3 Aspect



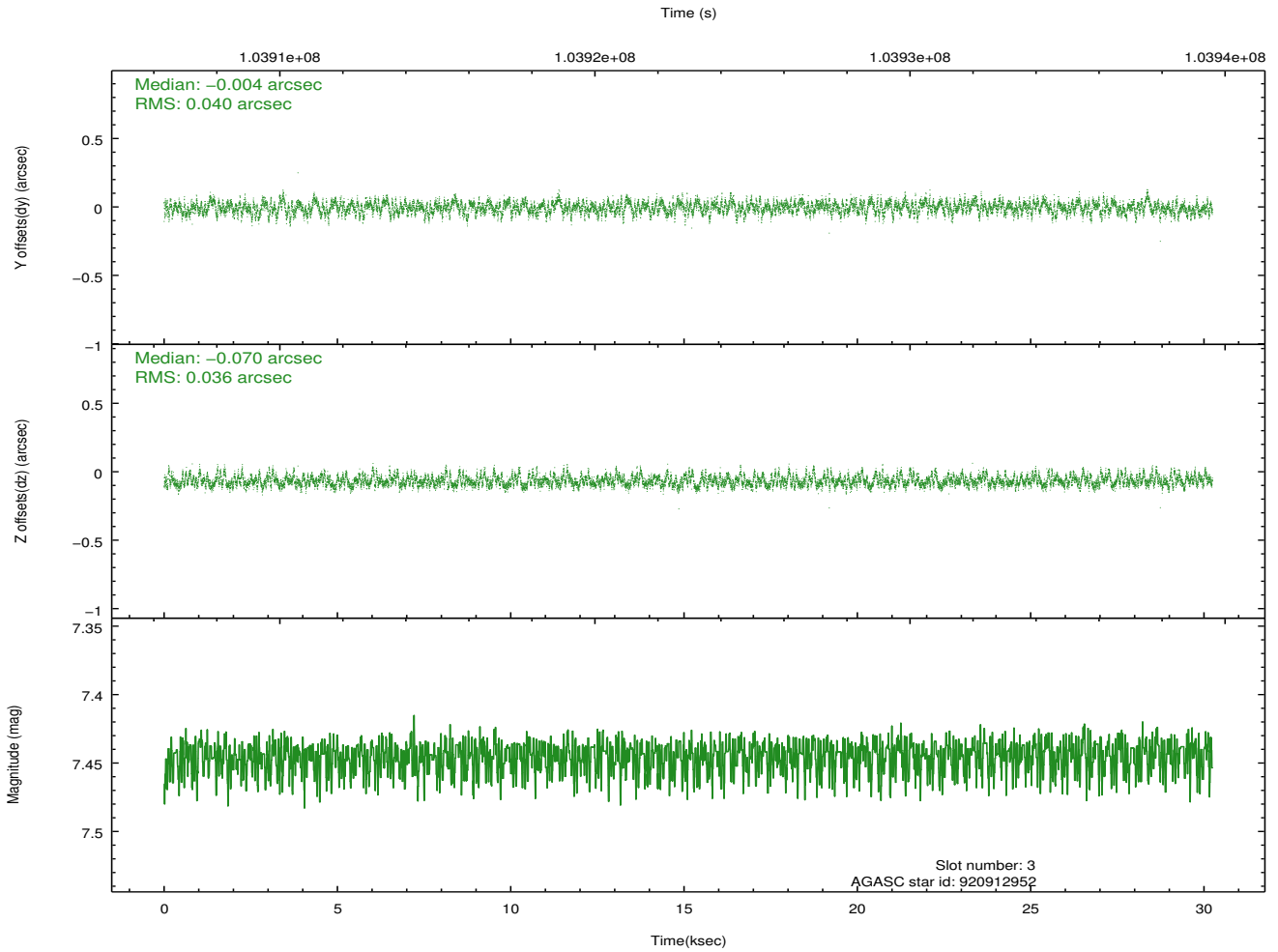
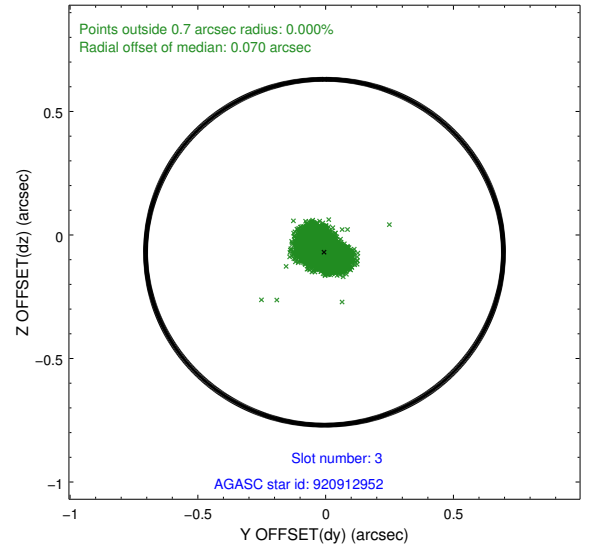
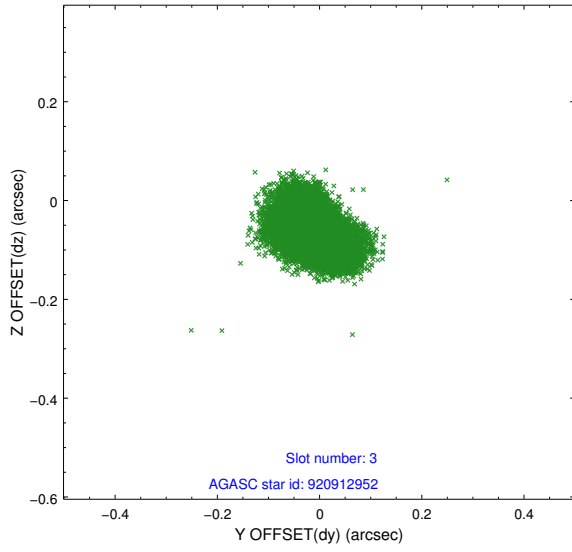


Slot Statistics

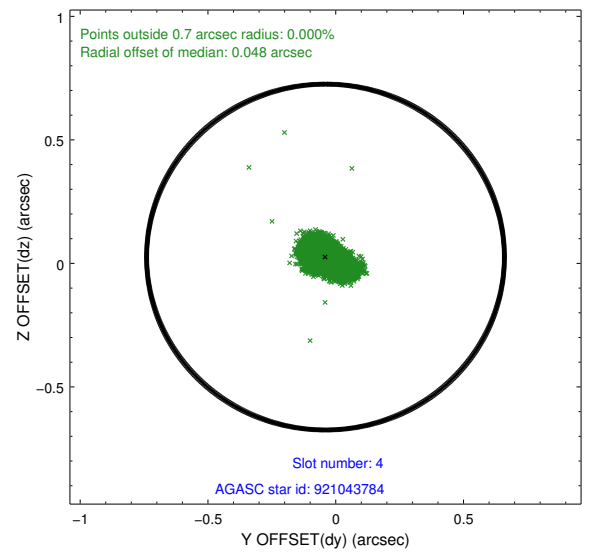
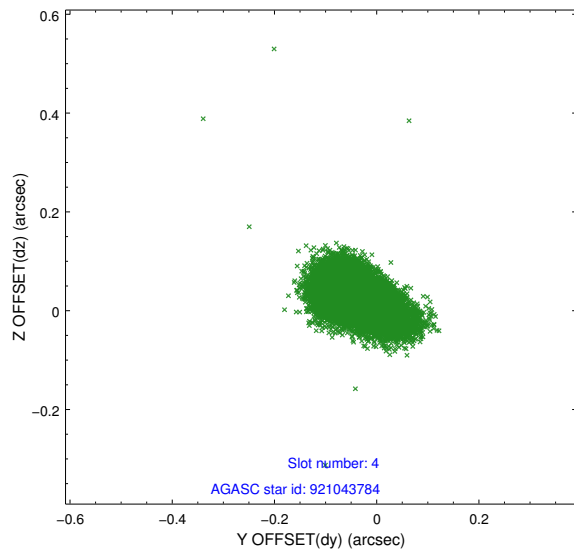
slot	status	id	mag	n_pts	med_dy	med_dz	dr1	dr2	ra	dec	mean_y	mean_z
0	FID	ACIS-S-3	7.35	7376	-0.071	-0.049	0.007	0.012	0.000000	0.000000	58.85	-1980.88
1	FID	ACIS-S-4	7.18	7376	-0.010	0.061	0.007	0.013	0.000000	0.000000	2159.06	56.65
2	FID	ACIS-S-5	7.23	7377	0.052	-0.003	0.007	0.012	0.000000	0.000000	-1806.98	50.36
3	GUIDE	920912952	7.44	14752	-0.004	-0.070	0.057	0.093	50.997738	-37.170324	-855.10	423.54
4	GUIDE	921043784	7.56	14753	-0.040	0.026	0.059	0.098	51.303384	-37.152691	-1636.26	827.32
5	GUIDE	920913800	8.32	14754	0.051	0.019	0.071	0.111	50.699964	-36.577710	-1230.54	-1844.85
6	GUIDE	920916000	8.37	14748	-0.025	0.053	0.065	0.106	50.151900	-36.775522	492.57	-2050.67
7	GUIDE	991962208	9.67	14739	0.019	-0.032	0.099	0.167	50.043878	-37.678447	2424.83	581.54

2.4 Star Slots

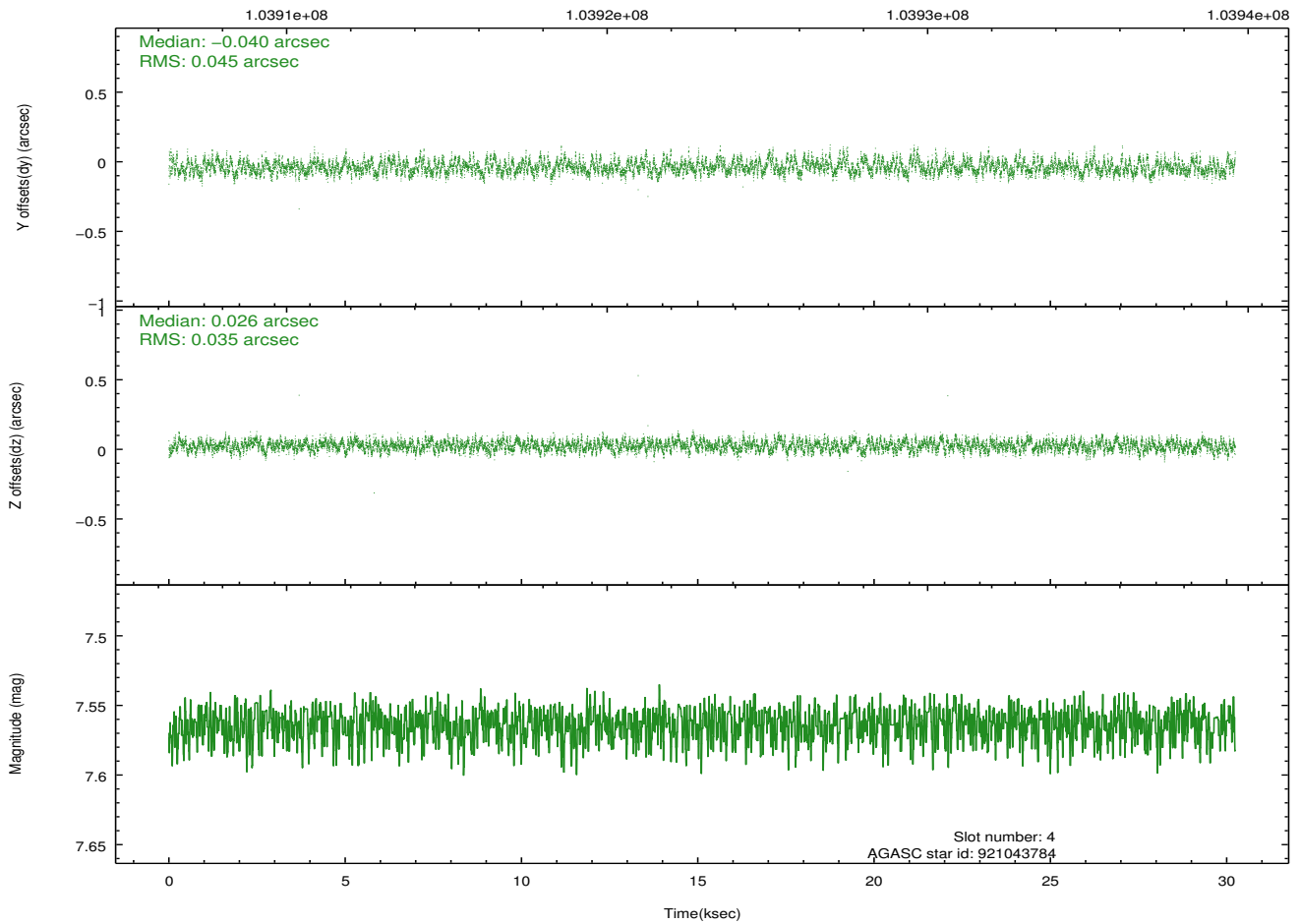
2.4.1 Slot 3



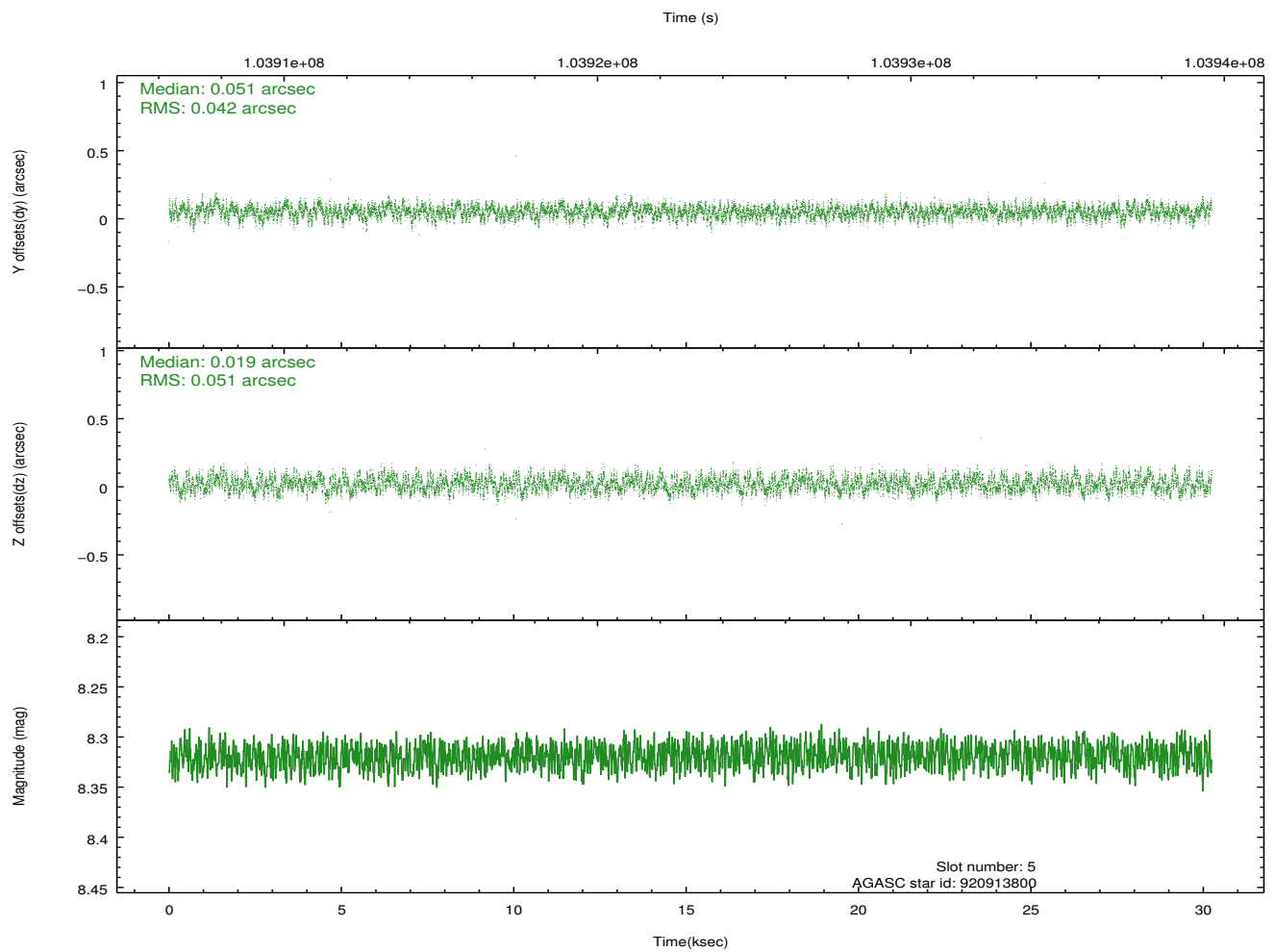
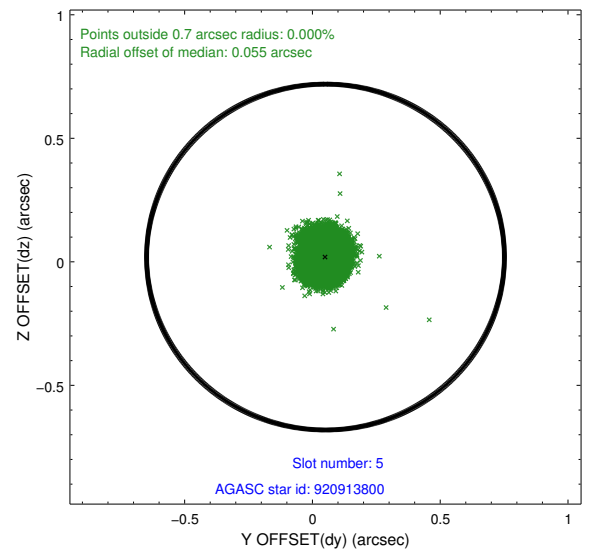
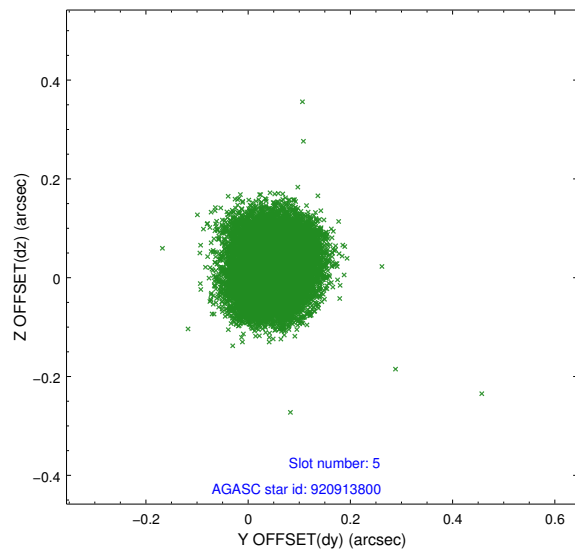
2.4.2 Slot 4



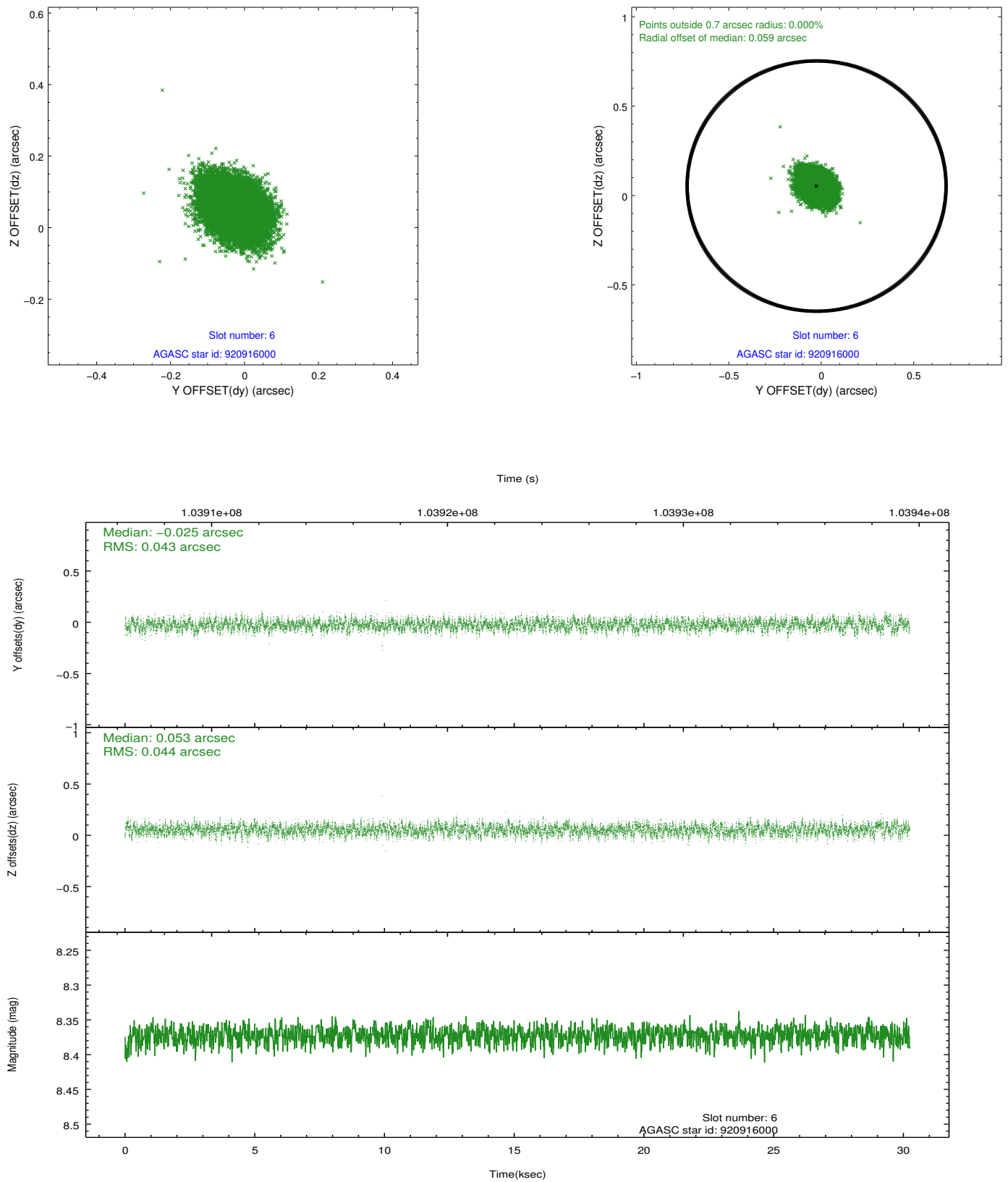
Time (s)



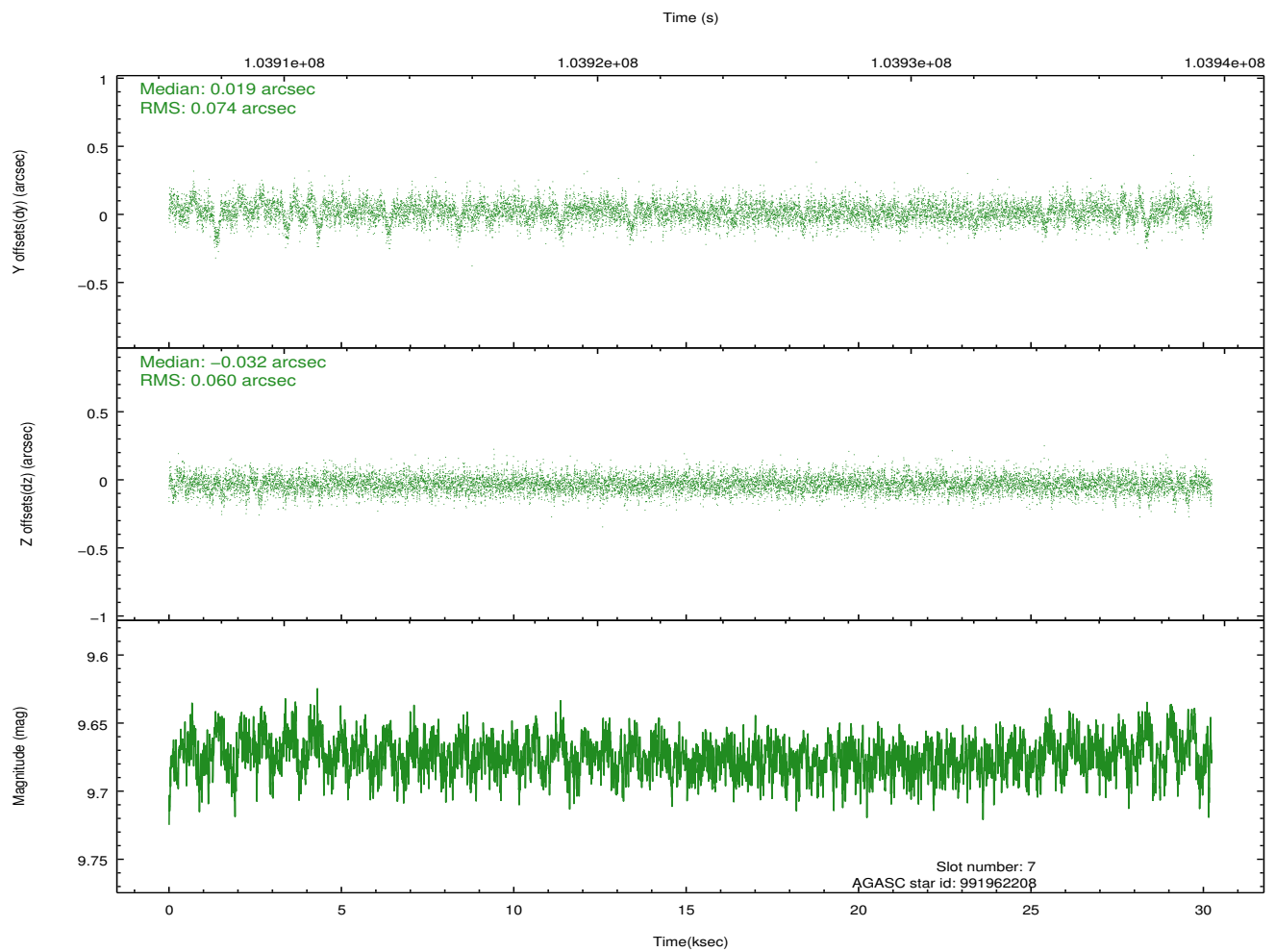
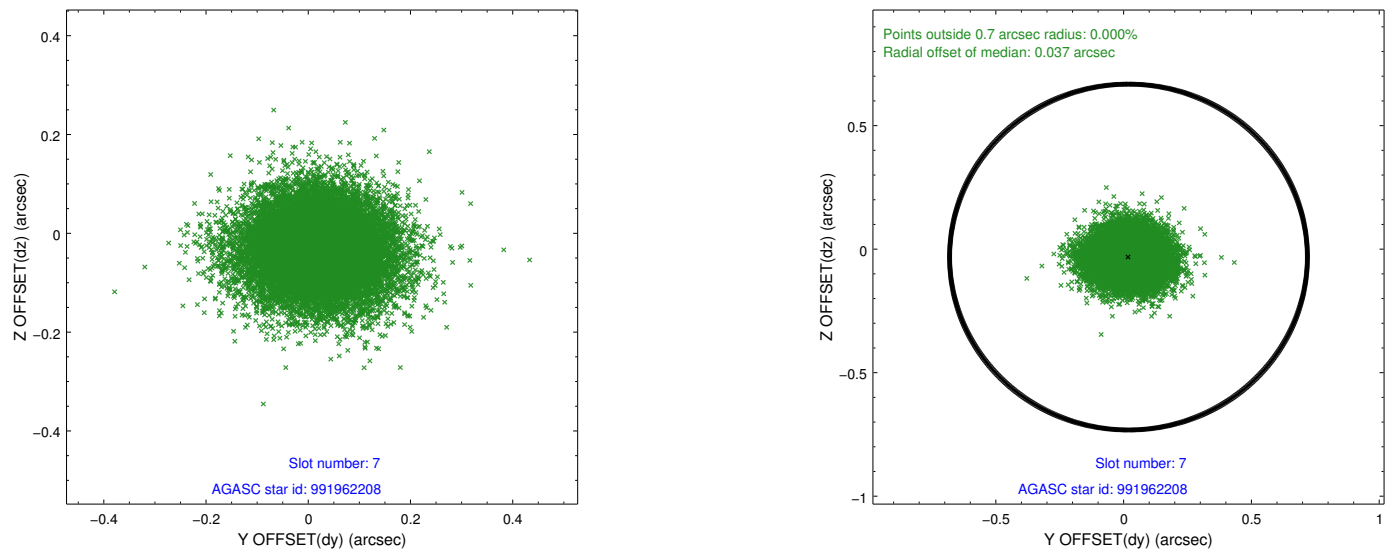
2.4.3 Slot 5



2.4.4 Slot 6

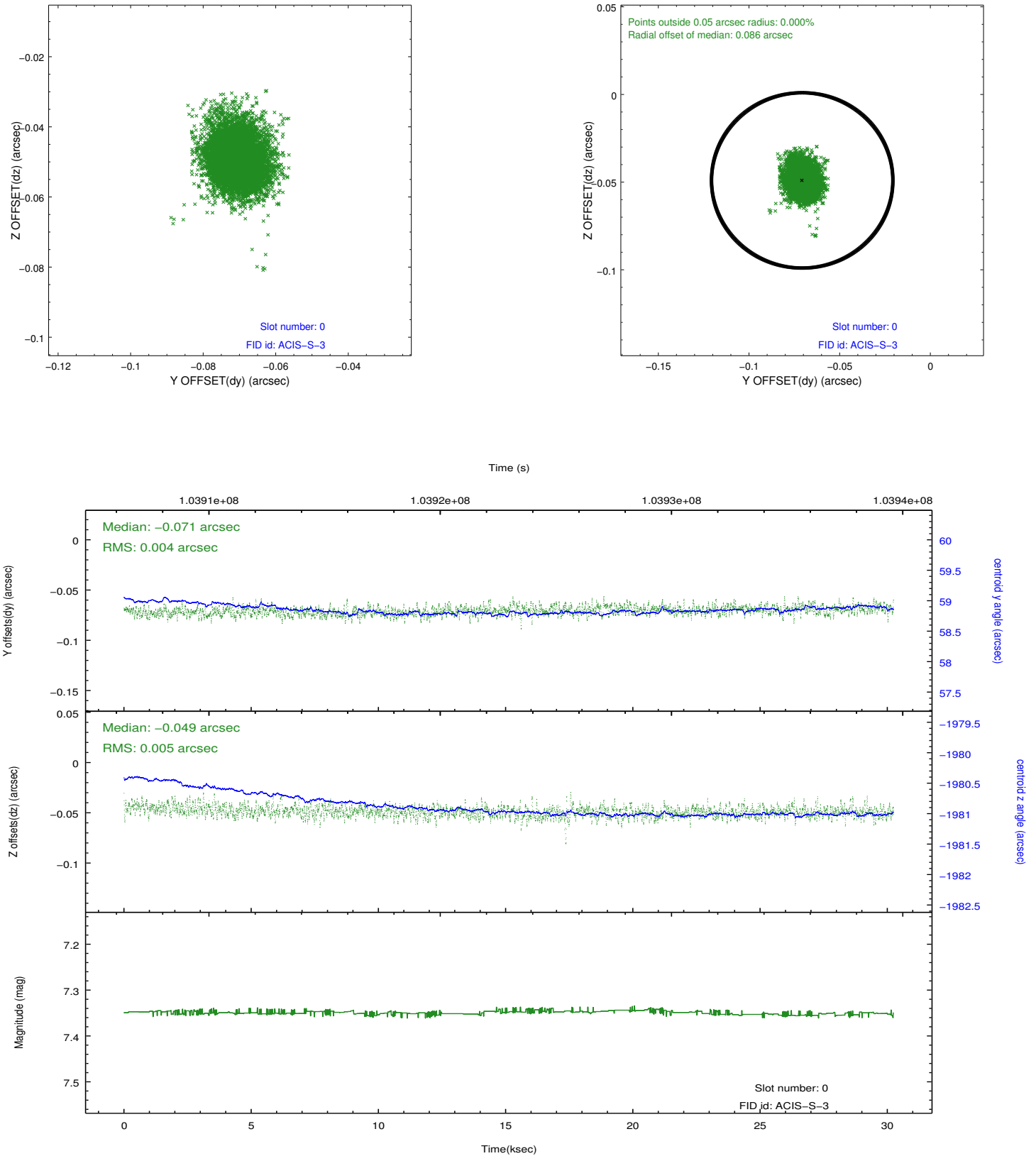


2.4.5 Slot 7

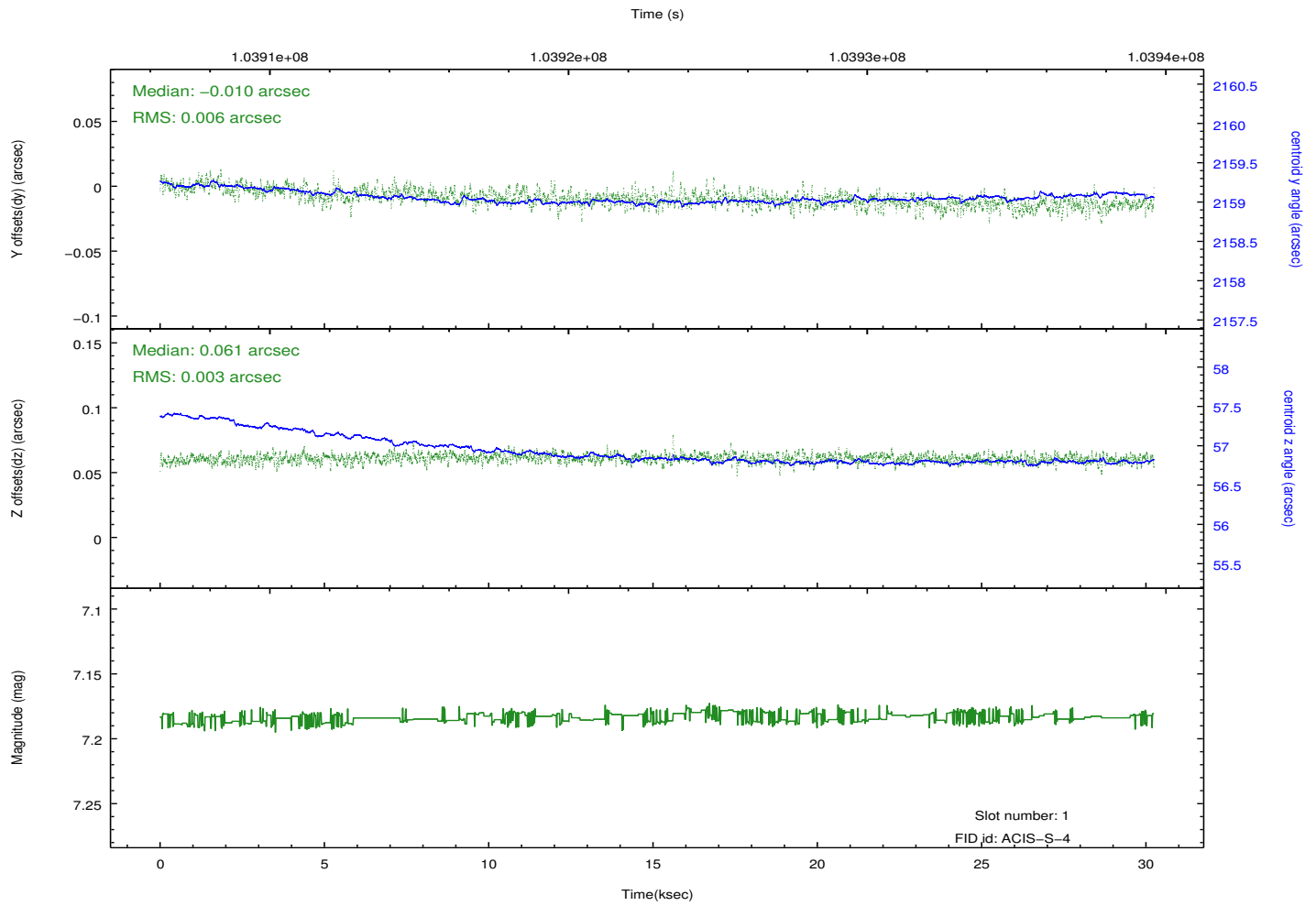
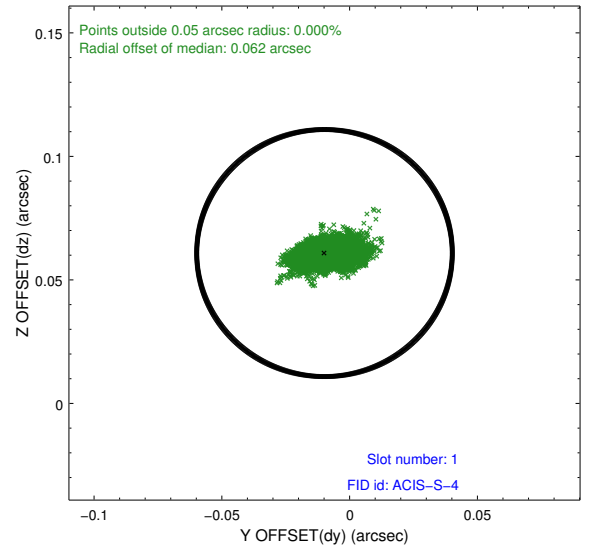
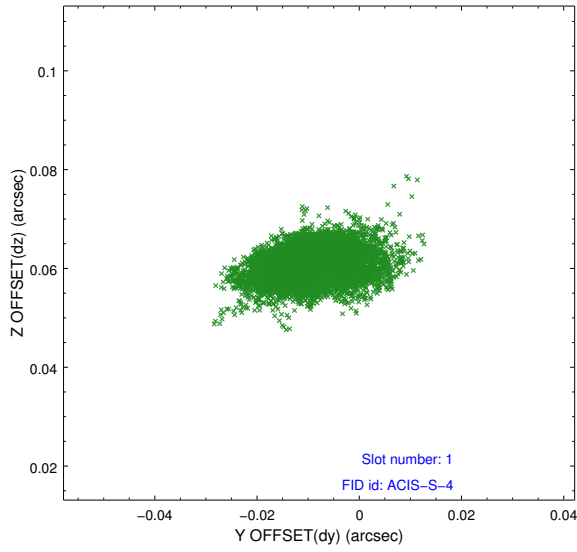


2.5 FID Slots

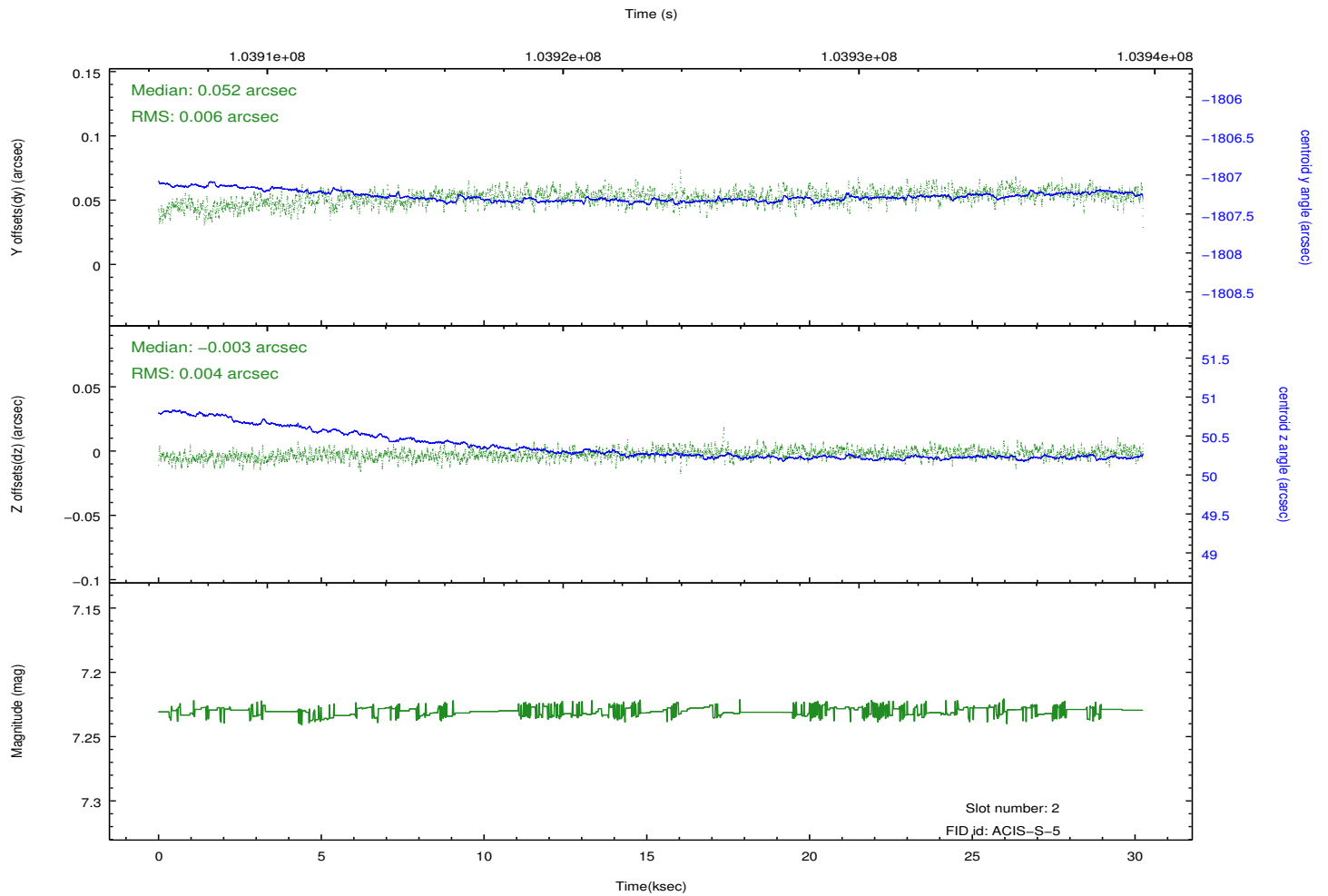
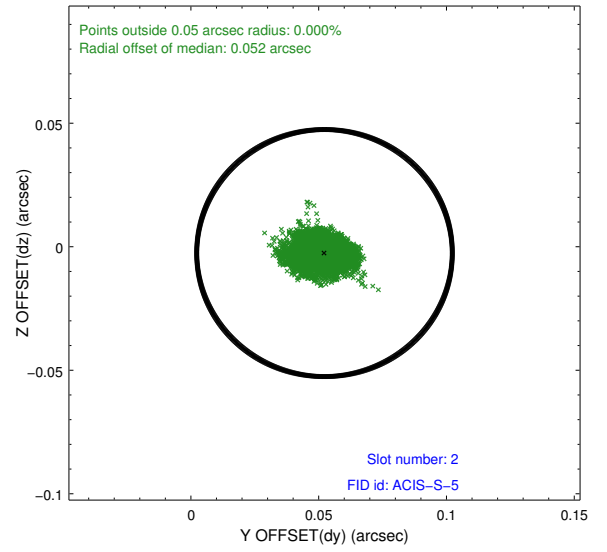
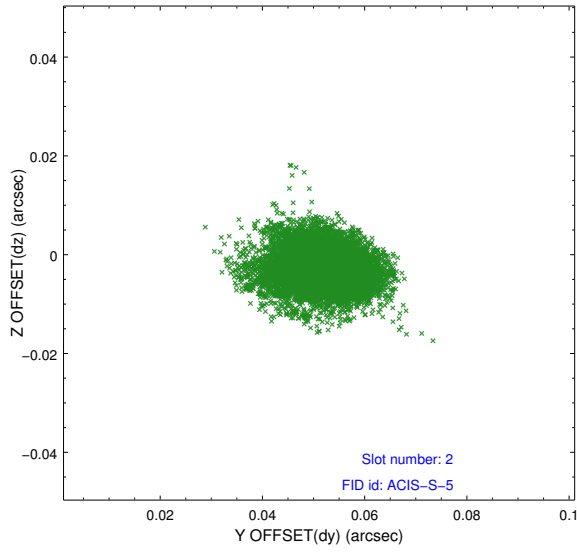
2.5.1 Slot 0



2.5.2 Slot 1



2.5.3 Slot 2



A Summary

A.1 Status

V&V Scientist	Beth Sundheim
V&V Date (YYYY-MM-DD)	2012.09.19
V&V Edition	1
V&V Disposition and Status	OK
V&V Charge Time	30.233

A.2 Comments