

V&V Reference Report

L2 ASCDS Version : 8.4.5

Observation 2192 - L2 Version 3
Chandra X-Ray Center

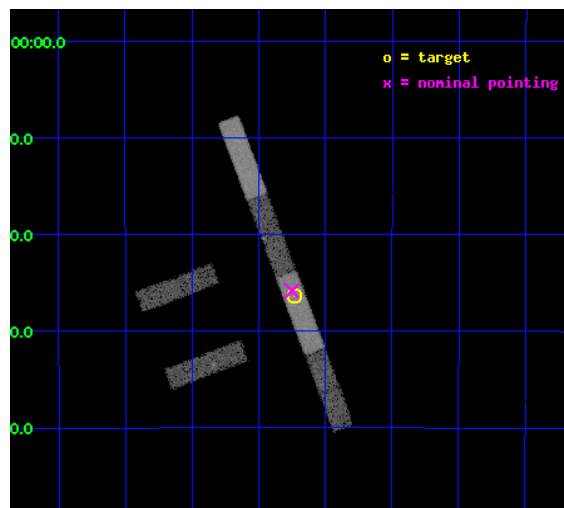
L2 Processing Date : Sep 23 2012

Contents

1	Front	2
2	OBI	3
2.1	OBI	3
2.1.1	Images	3
2.1.2	Bias	3
2.1.3	Parameters	4
2.1.4	Events	4
2.2	Compared Parameters	5
2.3	Aspect	6
2.4	Star Slots	9
2.4.1	Slot 3	9
2.4.2	Slot 4	10
2.4.3	Slot 5	11
2.4.4	Slot 6	12
2.4.5	Slot 7	13
2.5	FID Slots	14
2.5.1	Slot 0	14
2.5.2	Slot 1	15
2.5.3	Slot 2	16
A	Summary	17
A.1	Status	17
A.2	Comments	17

1 Front

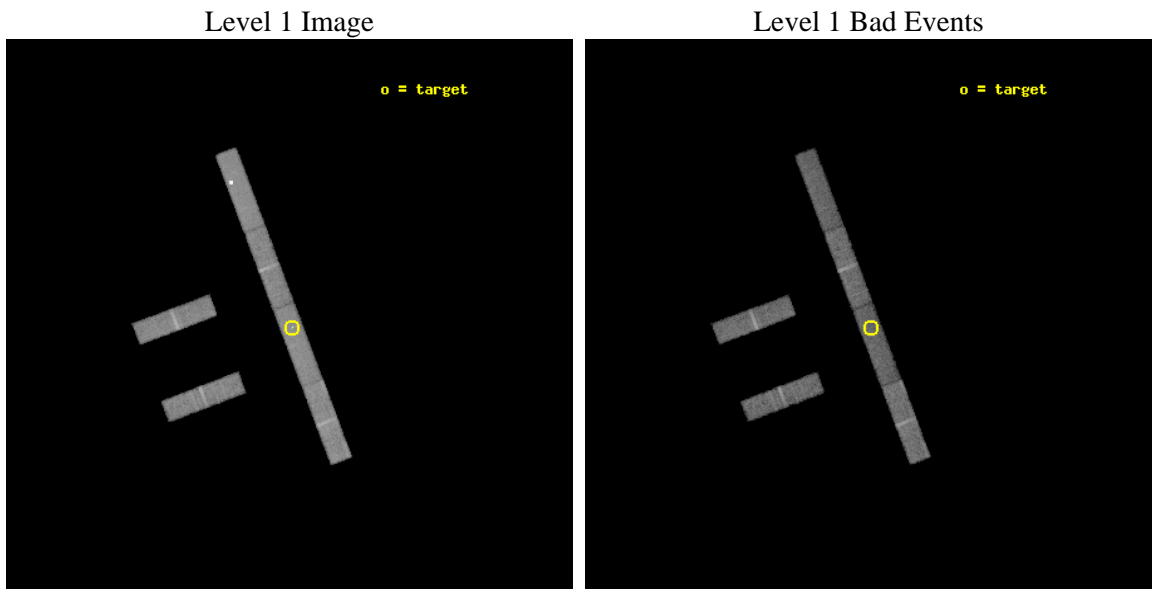
seq_num	700382	Sequence number
obs_id	2192	Observation id
title	THE X-RAY EMISSION OF COMPOSITE GALAXIES	Proposal title
observer	Dr Andreas Zezas	Principal investigator
object	IRAS00317-2142	Source name
dtycycle	0	
cycle	P	events from which exps? Prim/Second/Both
ra_targ	8.5575	Observer's specified target RA [deg]
dec_targ	-21.439167	Observer's specified target Dec [deg]
ra_nom	8.5628965513858	Nominal RA [deg]
dec_nom	-21.430772446422	Nominal Dec [deg]
roll_nom	69.26085043817	Nominal Roll [deg]
revision	3	Processing version of data
ontime	20494.099888951	Sum of GTIs [s]
livetime	19756.984748866	Livetime [s]
ontime2	20494.099888951	Sum of GTIs [s]
ontime3	20494.099888951	Sum of GTIs [s]
ontime5	20494.099888951	Sum of GTIs [s]
ontime6	20494.099888951	Sum of GTIs [s]
ontime7	20494.099888951	Sum of GTIs [s]
ontime8	20494.099888951	Sum of GTIs [s]
l2events	51336	Number of level 2 events



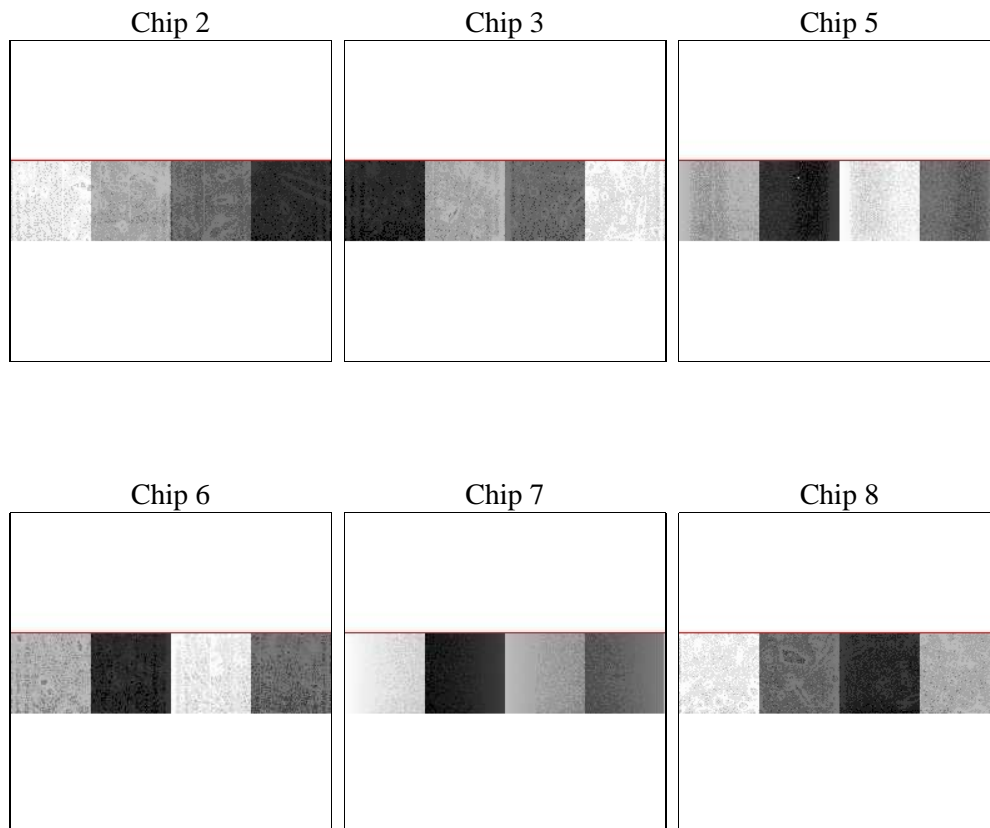
2 OBI

2.1 OBI

2.1.1 Images



2.1.2 Bias



2.1.3 Parameters

obi_num	0	Obi number	sched_exp_time	20088.000000	[s] Scheduled observation exposure time
ascdsver	8.4.5	Processing system revision	ontime	20494.099888951	Sum of GTIs [s]
caldbver	4.5.1.1	 	ontime2	20494.099888951	Sum of GTIs [s]
date	2012-09-23T13:19:50	Date and time of file creation	ontime3	20494.099888951	Sum of GTIs [s]
revision	3	Processing version of data	ontime5	20494.099888951	Sum of GTIs [s]
			ontime6	20494.099888951	Sum of GTIs [s]
			ontime7	20494.099888951	Sum of GTIs [s]
			ontime8	20494.099888951	Sum of GTIs [s]
			l1events	264878	Number of level 1 events

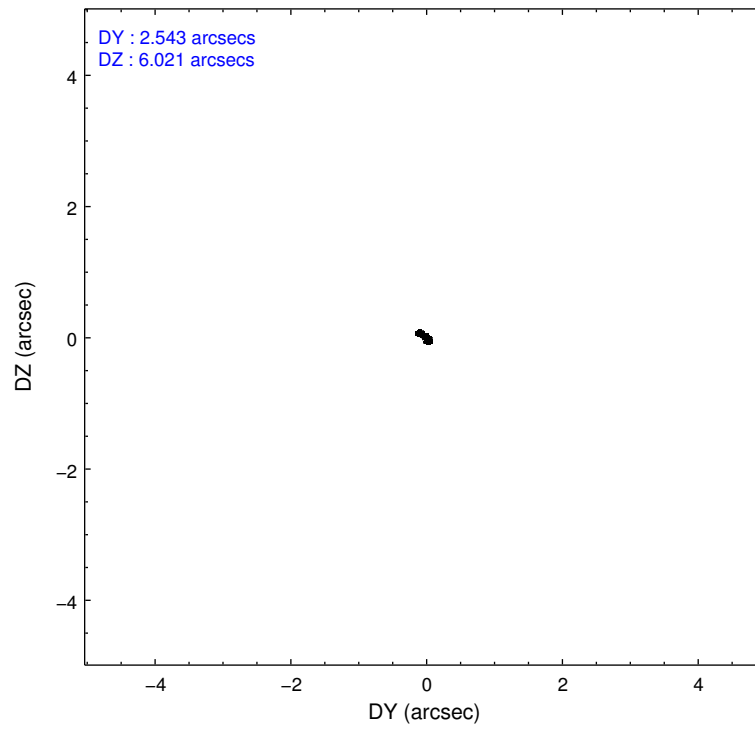
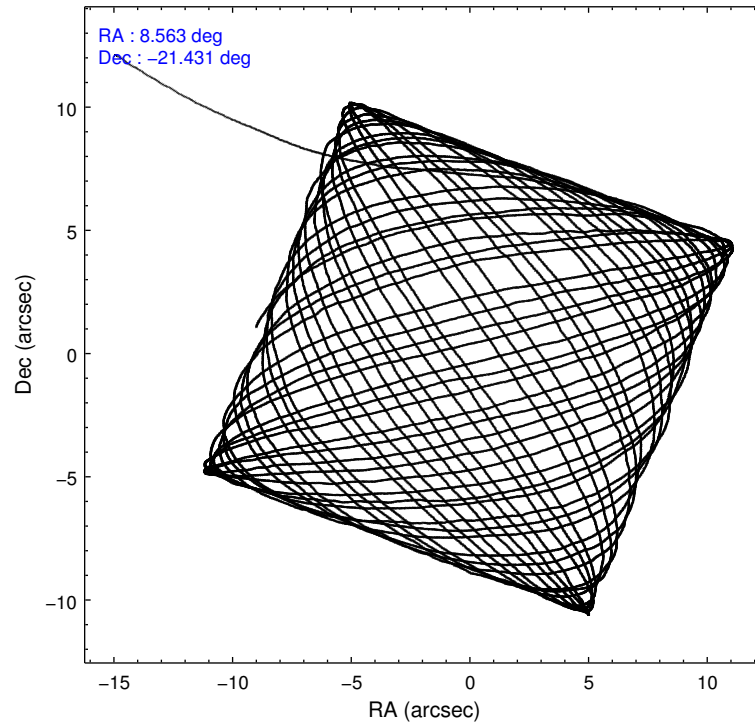
2.1.4 Events

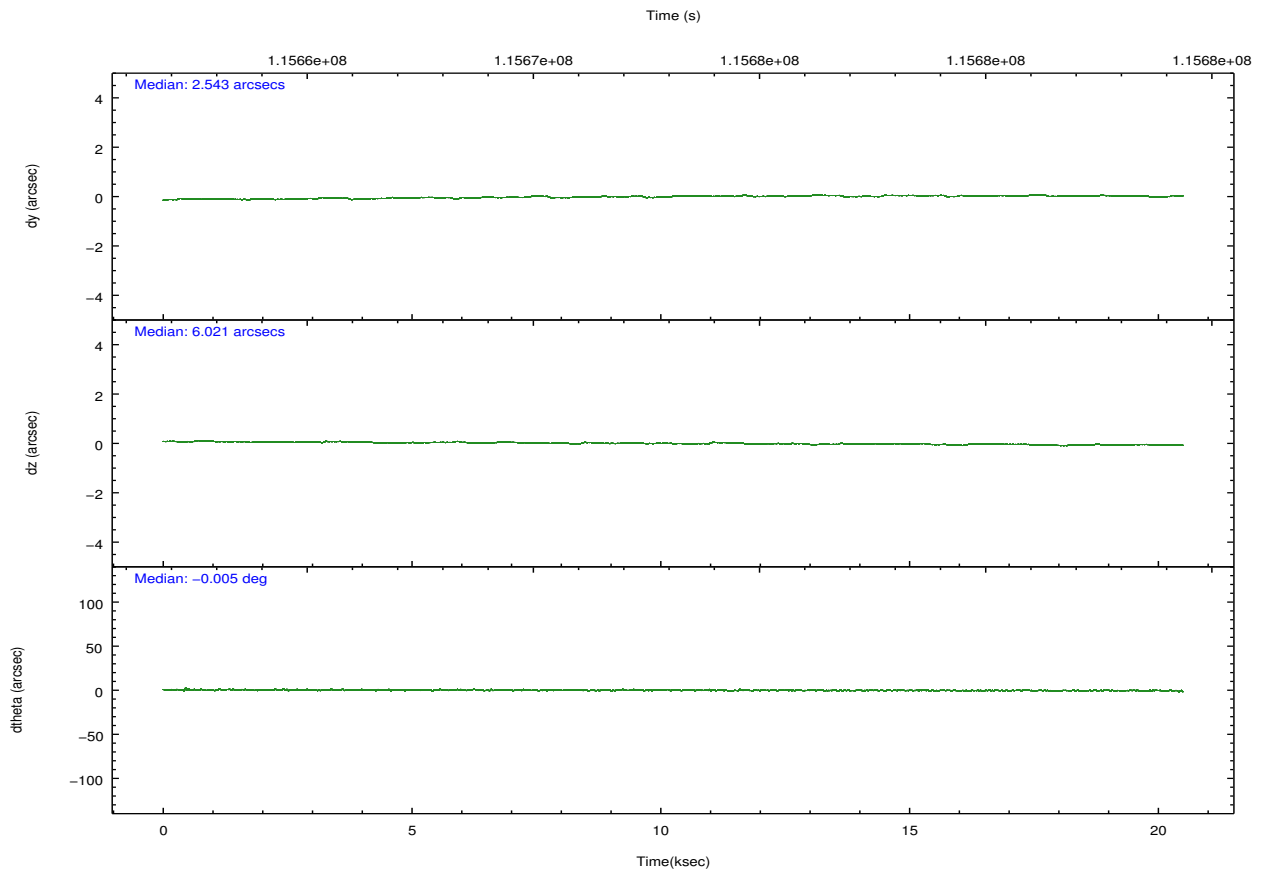
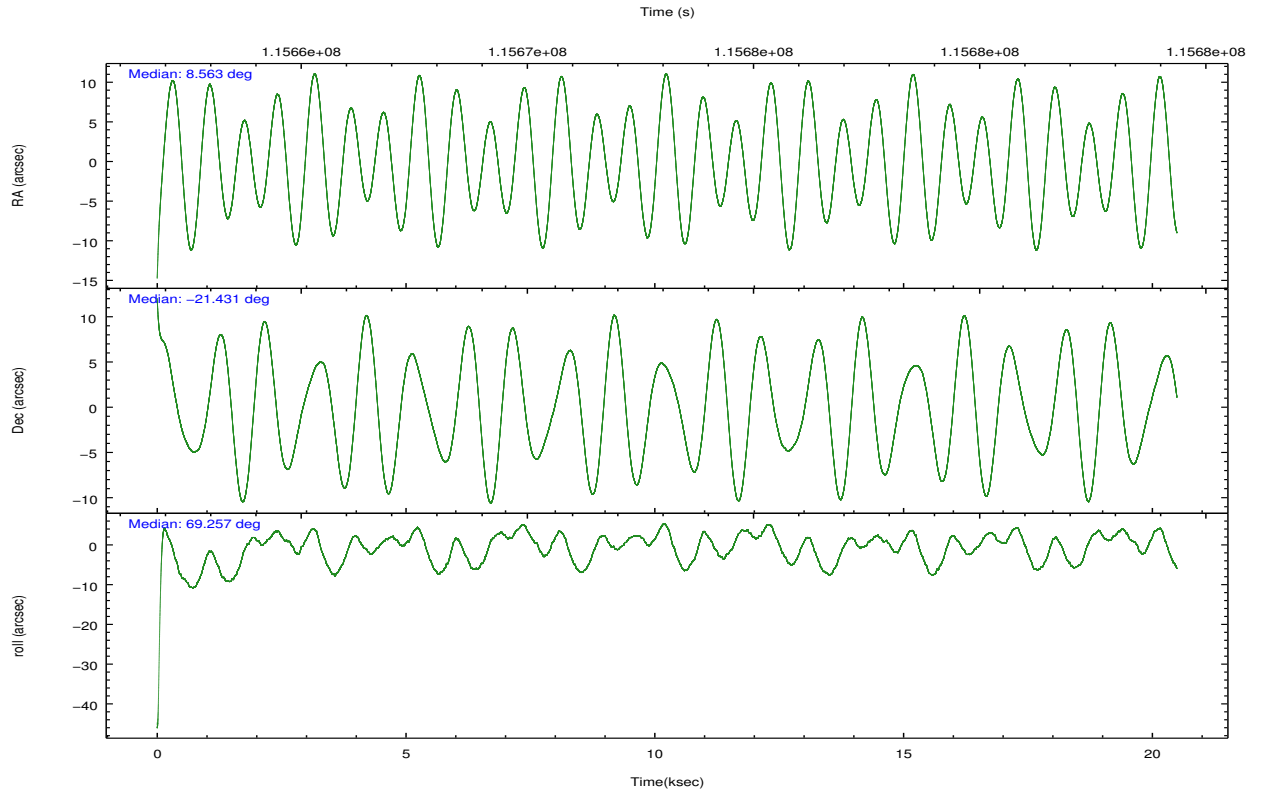
	ccd 2	ccd 3	ccd 5	ccd 6	ccd 7	ccd 8		ccd 2	ccd 3	ccd 5	ccd 6	ccd 7	ccd 8
level 1 events	39091	36418	58859	38228	43419	48863	grade 0 events	1371	1477	16813	1547	2422	2537
rejected events	35147	32540	23978	33960	24163	39854		3%	4%	28%	4%	5%	5%
rejected %	89%	89%	40%	88%	55%	81%	grade 1 events	13	12	66	6	34	19
								0%	0%	0%	0%	0%	0%
							grade 2 events	796	675	5689	780	4050	1860
								2%	1%	9%	2%	9%	3%
							grade 3 events	563	539	1315	559	2106	1141
								1%	1%	2%	1%	4%	2%
							grade 4 events	543	546	1219	593	1990	1108
								1%	1%	2%	1%	4%	2%
							grade 5 events	1164	1171	3662	1340	3994	1595
								2%	3%	6%	3%	9%	3%
							grade 6 events	699	663	10079	814	8815	2418
								1%	1%	17%	2%	20%	4%
							grade 7 events	33942	31335	20016	32589	20008	38185
								86%	86%	34%	85%	46%	78%

2.2 Compared Parameters

Parameter	Planned	Actual	Parameter	Planned	Actual
Instrument	ACIS	ACIS	Obspar format version number	7	7
Detector	ACIS-235678	ACIS-235678	Obspar file type	PREDICTED	ACTUAL
Grating	NONE	NONE	Obspar update status	NONE	UPDATED
Data mode	FAINT	FAINT	Number of optional ACIS chips dropped	0	0
Observation mode	POINTING	POINTING	On-chip summing requested	N	N
[deg] Pointing RA	8.567922	8.562896551385759	Subarray requested	CUSTOM	1/4
[deg] Pointing Dec	-21.457675	-21.43077244642181	Subarray start row	385	385
[deg] Pointing Roll	69.106080	69.26085043816994	Subarray row count	256	256
[mm] SIM focus pos	-0.684267	-0.6828225247311905	Alternating exposures requested	N	N
[mm] SIM defocus	0	0.001444936568705701	[s] Primary exposure time	0.000000	1.1
[mm] SIM translation stage pos	-190.132523	-190.1425803651734			
[mm] SIM translation stage offset	0	0.01005778216563158			
[s] Observation start time (MET)	115663246.184000	115662164.39107			
Observation start date	2001-08-31T16:39:42	2001-08-31T16:22:44			
[s] Observation end time (MET)	115683334.184000	115684126.55443			
Observation end date	2001-08-31T22:14:30	2001-08-31T22:28:46			
Read mode	TIMED	TIMED			

2.3 Aspect



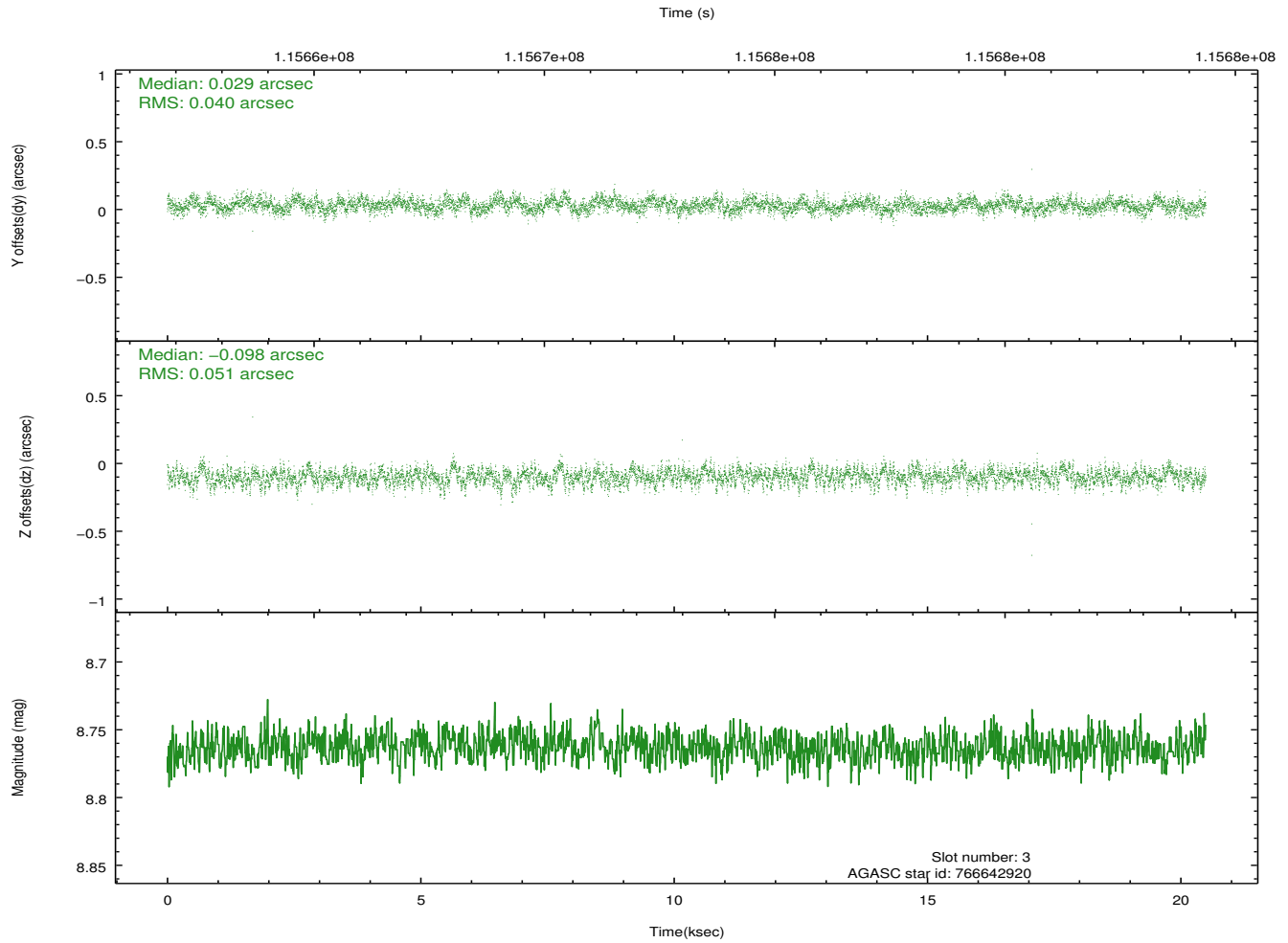
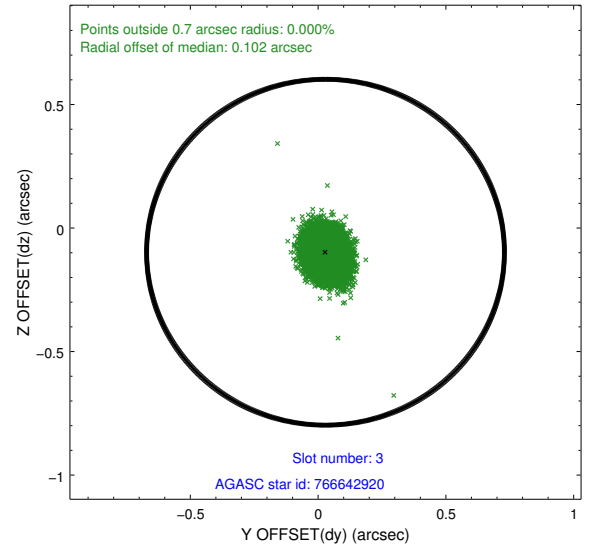
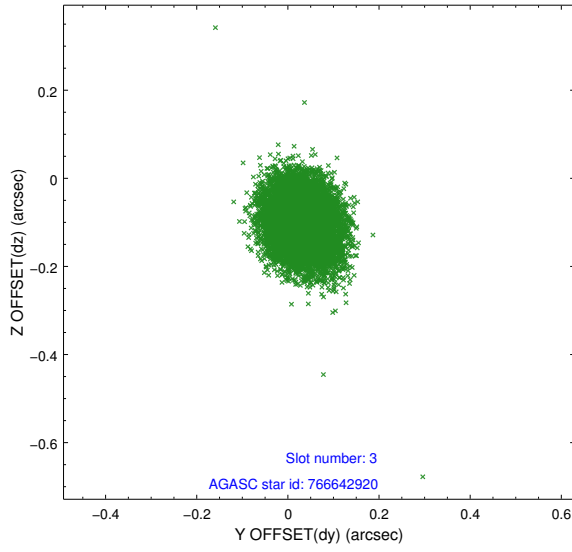


Slot Statistics

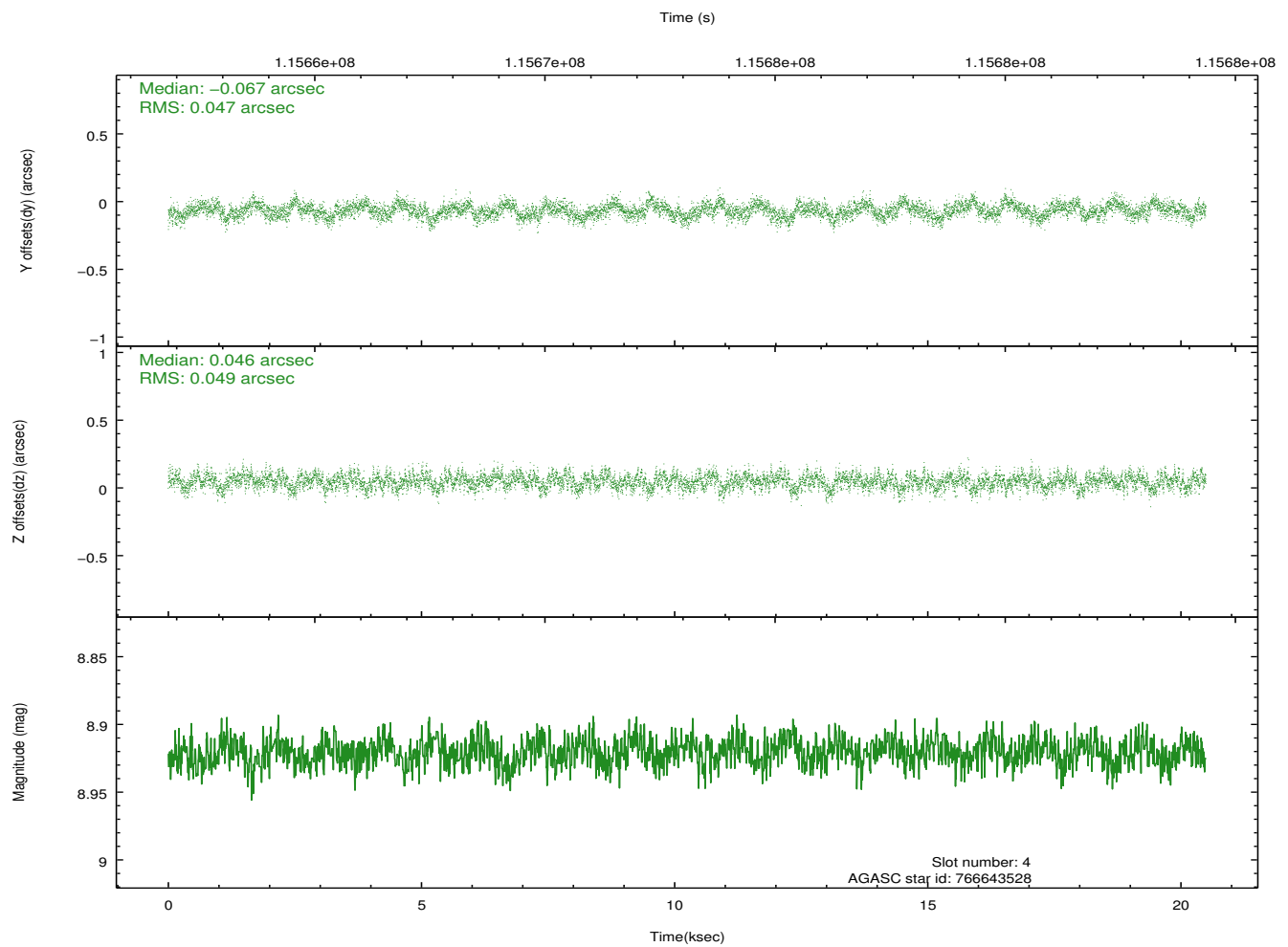
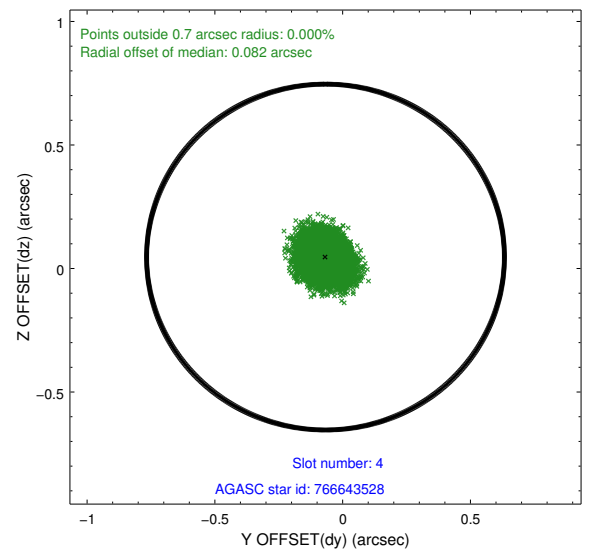
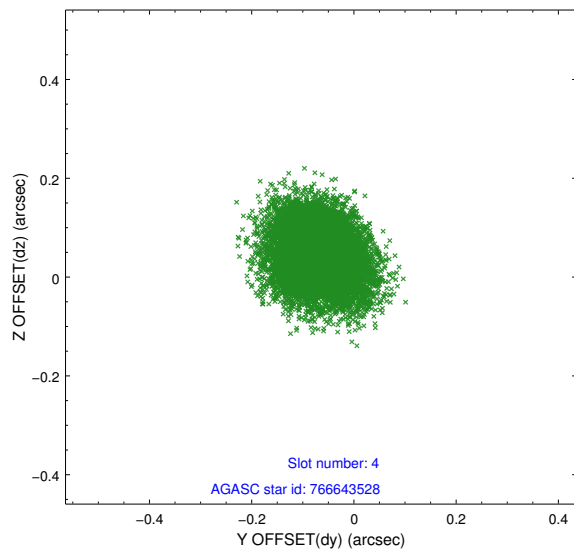
slot	status	id	mag	n_pts	med_dy	med_dz	dr1	dr2	ra	dec	mean_y	mean_z
0	FID	ACIS-S-2	7.12	4999	-0.037	0.003	0.010	0.016	0.000000	0.000000	-755.15	-1727.13
1	FID	ACIS-S-4	7.20	4999	-0.032	0.017	0.013	0.022	0.000000	0.000000	2158.01	181.26
2	FID	ACIS-S-5	7.24	4999	0.037	-0.011	0.010	0.016	0.000000	0.000000	-1807.73	175.01
3	GUIDE	766642920	8.76	9994	0.029	-0.098	0.069	0.111	8.852128	-21.744414	-626.02	-1255.07
4	GUIDE	766643528	8.92	9996	-0.067	0.046	0.073	0.118	9.051458	-21.398449	775.00	-1437.69
5	GUIDE	766643184	9.01	9992	0.056	-0.068	0.066	0.106	8.320820	-21.854151	-1628.34	263.06
6	GUIDE	766642600	9.74	9933	0.018	0.140	0.088	0.143	8.710822	-21.882167	-1257.62	-989.76
7	GUIDE	766643648	10.51	9991	-0.036	-0.019	0.147	0.244	8.408154	-21.352693	161.70	636.43

2.4 Star Slots

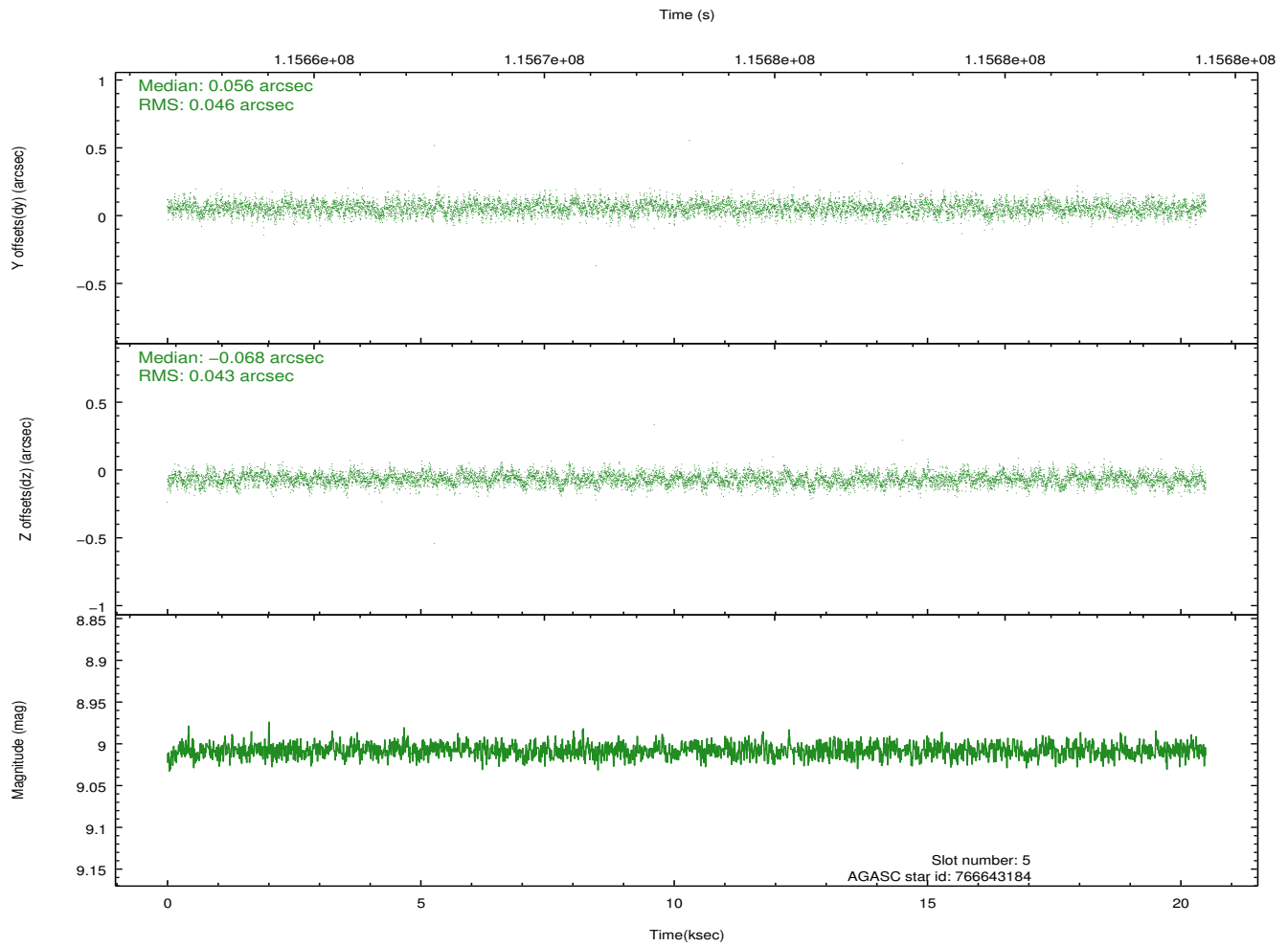
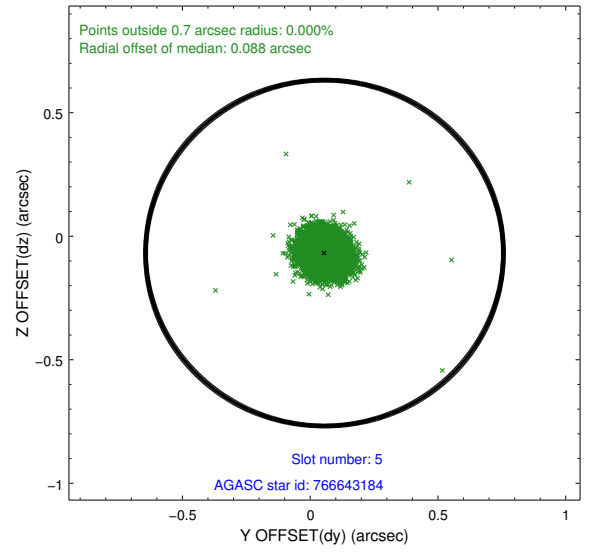
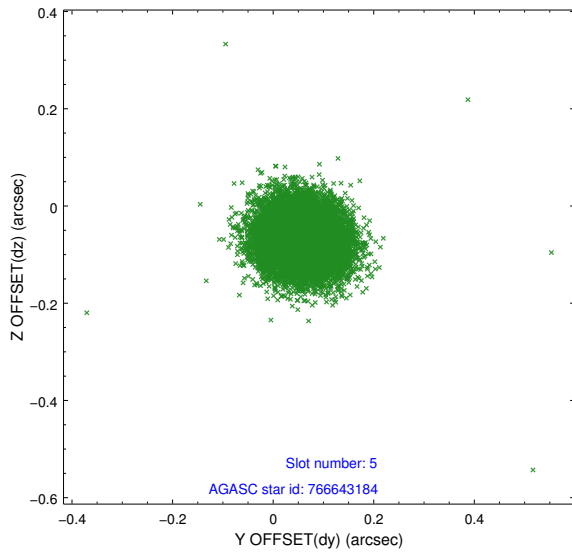
2.4.1 Slot 3



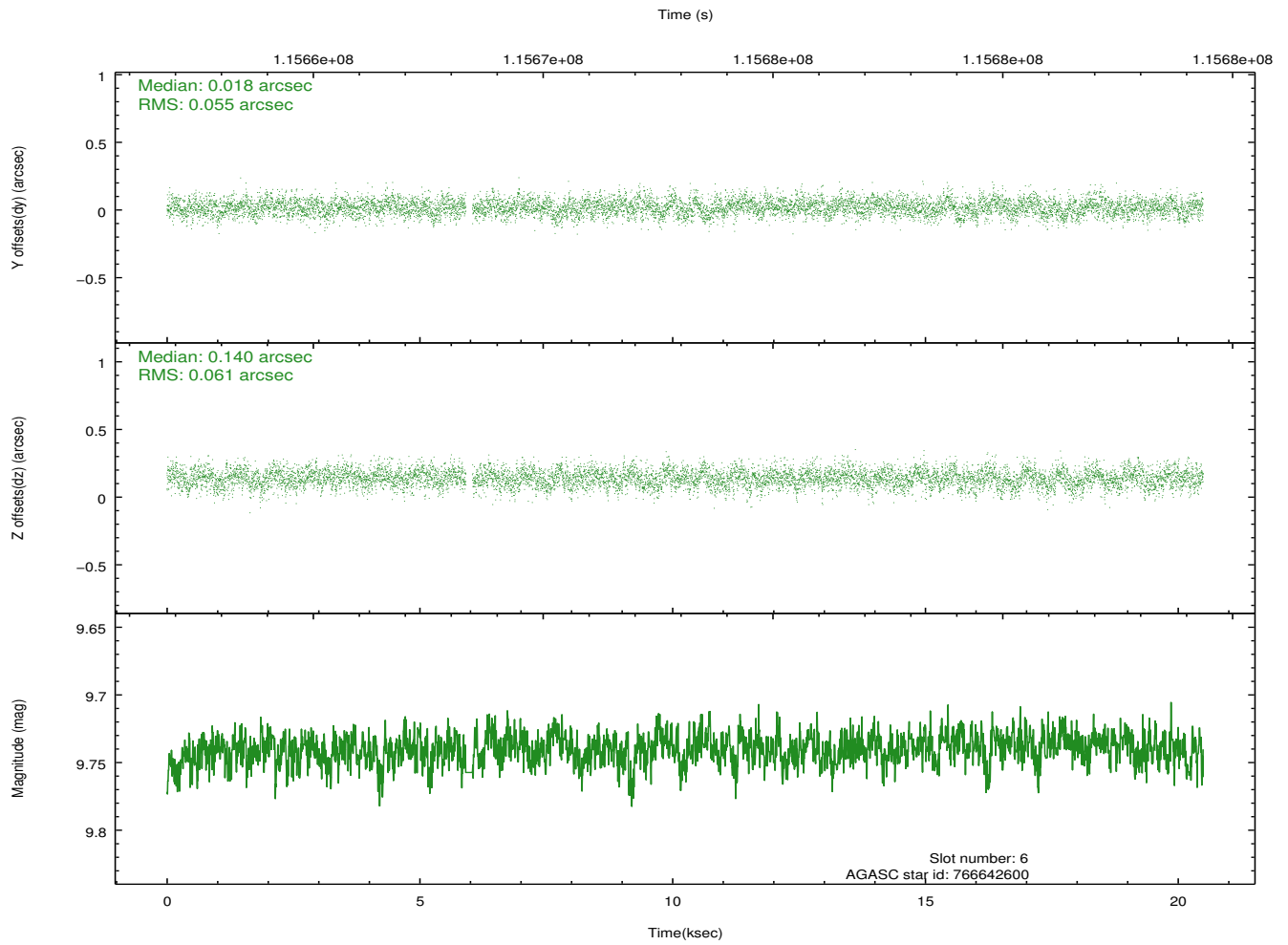
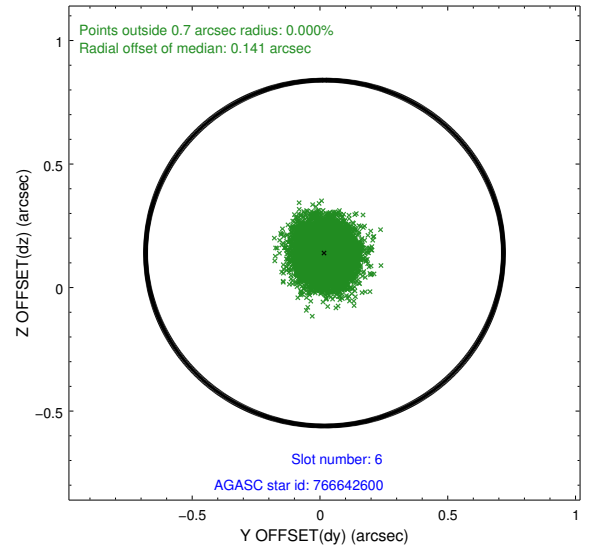
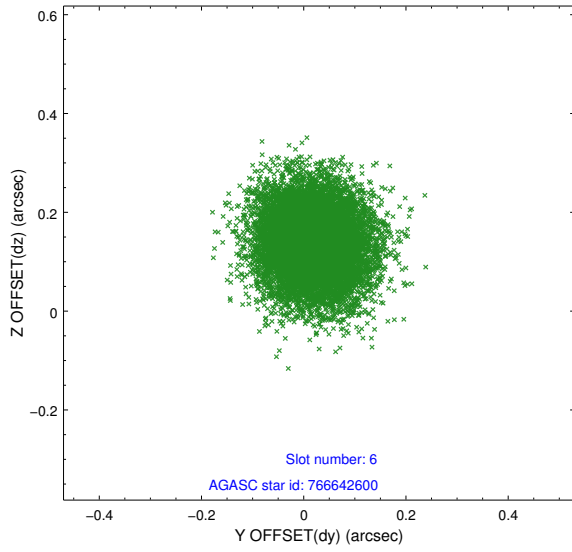
2.4.2 Slot 4



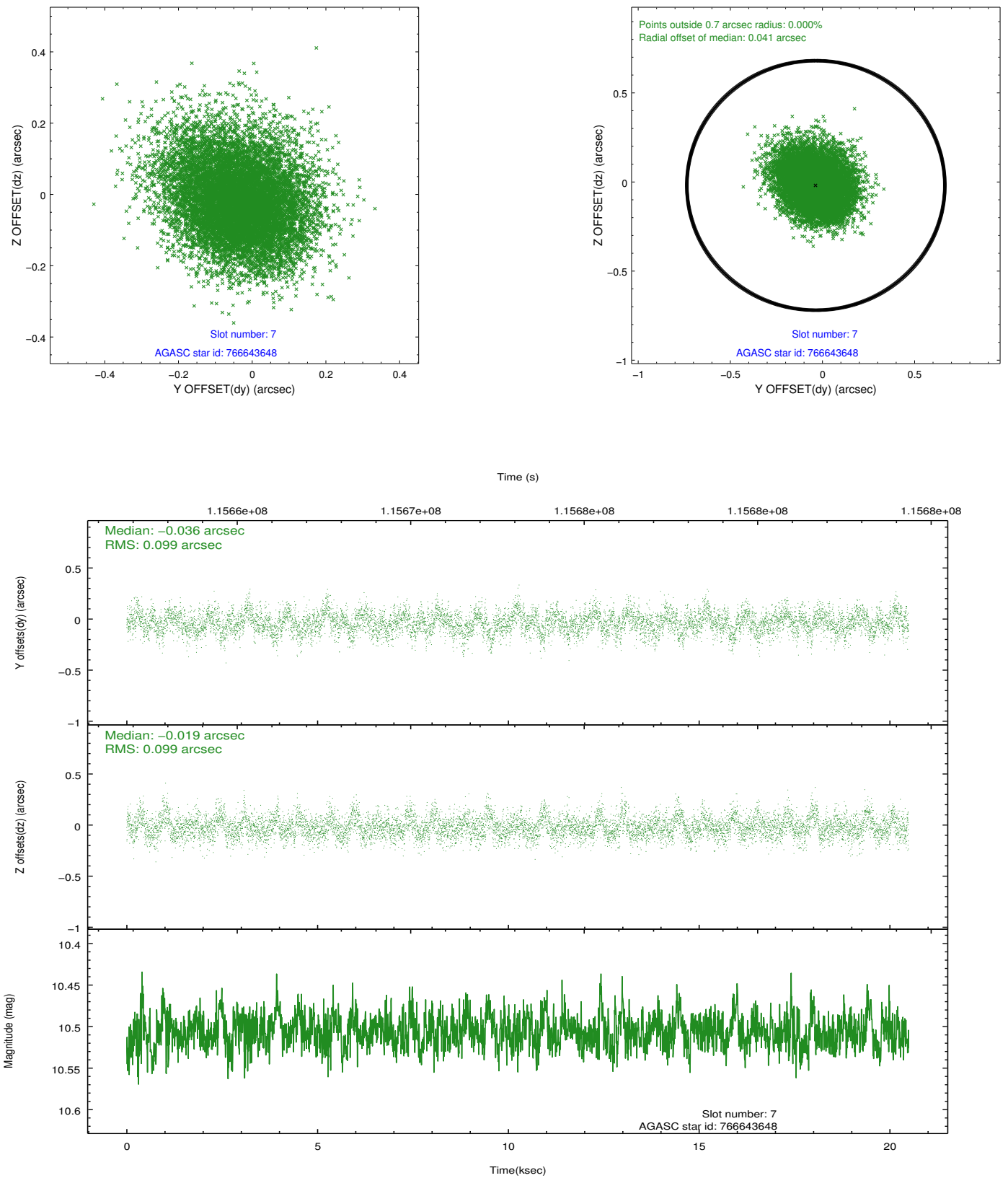
2.4.3 Slot 5



2.4.4 Slot 6

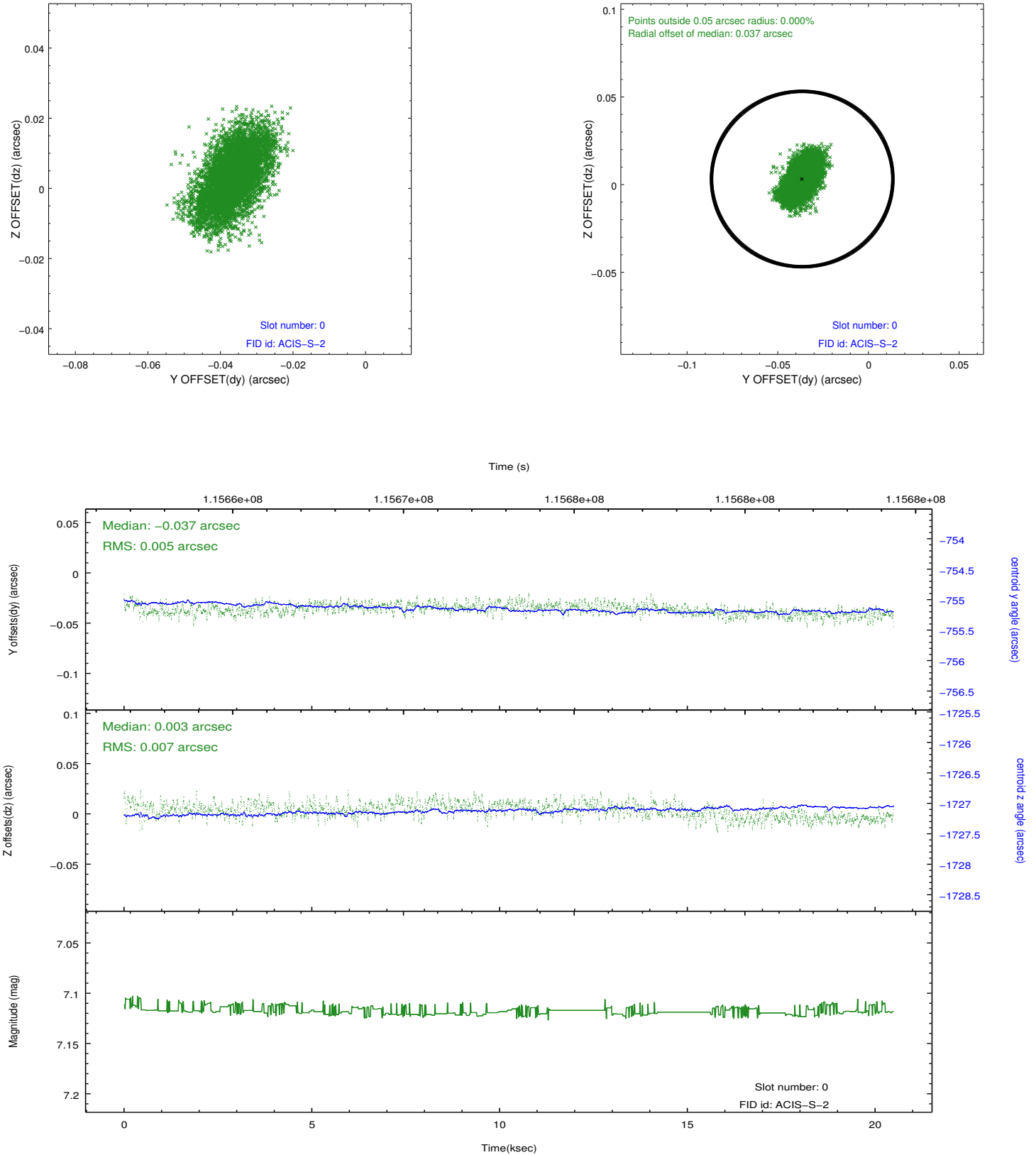


2.4.5 Slot 7

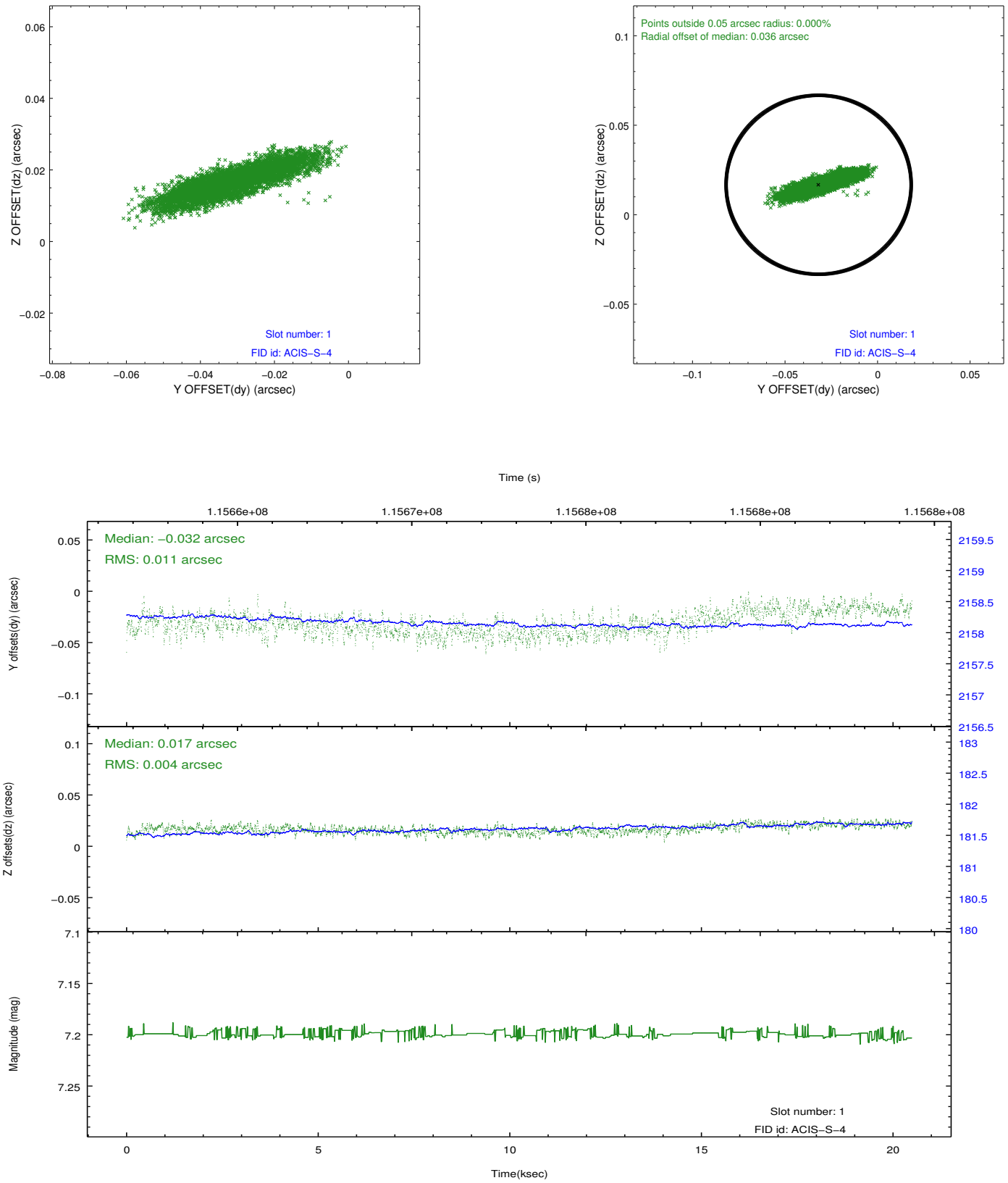


2.5 FID Slots

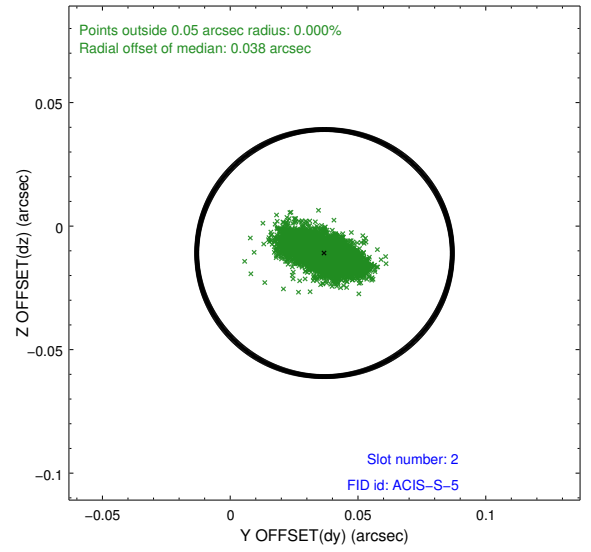
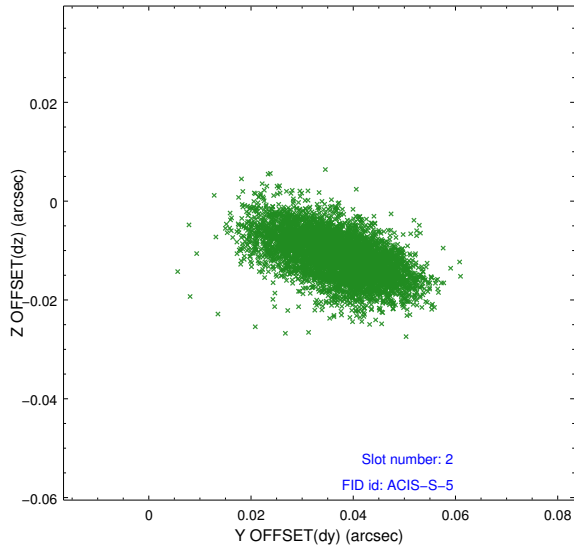
2.5.1 Slot 0



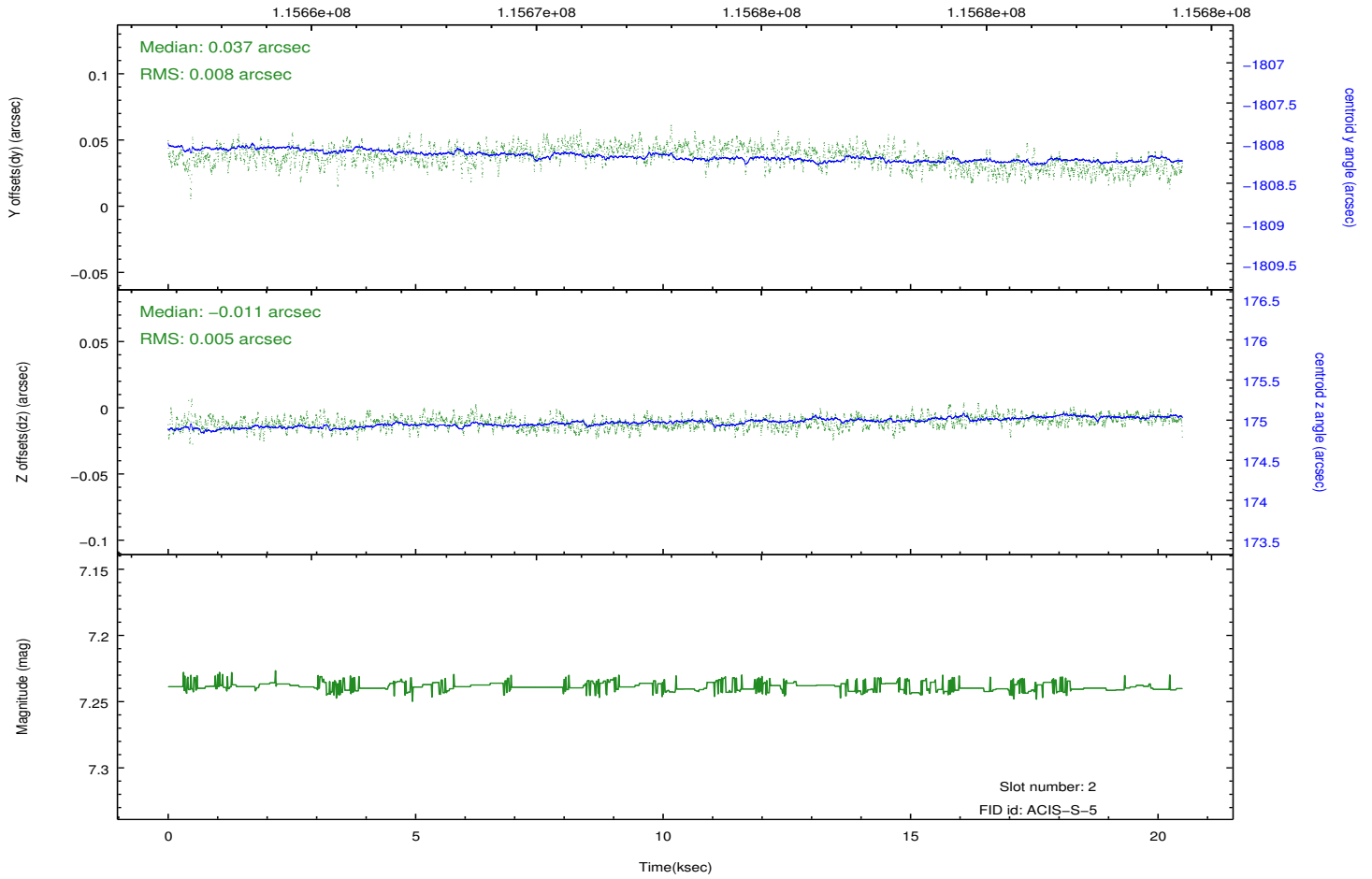
2.5.2 Slot 1



2.5.3 Slot 2



Time (s)



A Summary

A.1 Status

V&V Scientist	Jen Lauer
V&V Date (YYYY-MM-DD)	2012.09.26
V&V Edition	1
V&V Disposition and Status	OK
V&V Charge Time	20.459

A.2 Comments

Charge time for this ObsId remains at previous value of 20.459 ks although with the current processing the charge time would have been 20.49 ksec.