

V&V Reference Report

L2 ASCDS Version : 8.4.5

Observation 2212 - L2 Version 4
Chandra X-Ray Center

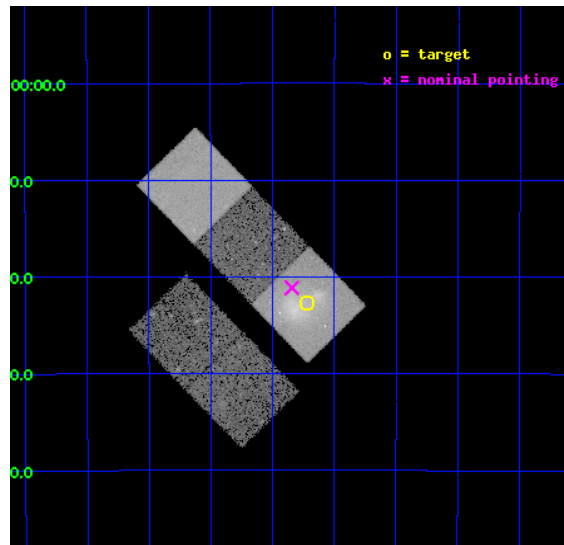
L2 Processing Date : Sep 23 2012

Contents

1	Front	2
2	OBI	3
2.1	OBI	3
2.1.1	Images	3
2.1.2	Bias	3
2.1.3	Parameters	4
2.1.4	Events	4
2.2	Compared Parameters	5
2.3	Aspect	6
2.4	Star Slots	9
2.4.1	Slot 3	9
2.4.2	Slot 4	10
2.4.3	Slot 5	11
2.4.4	Slot 6	12
2.4.5	Slot 7	13
2.5	FID Slots	14
2.5.1	Slot 0	14
2.5.2	Slot 1	15
2.5.3	Slot 2	16
A	Summary	17
A.1	Status	17
A.2	Comments	17

1 Front

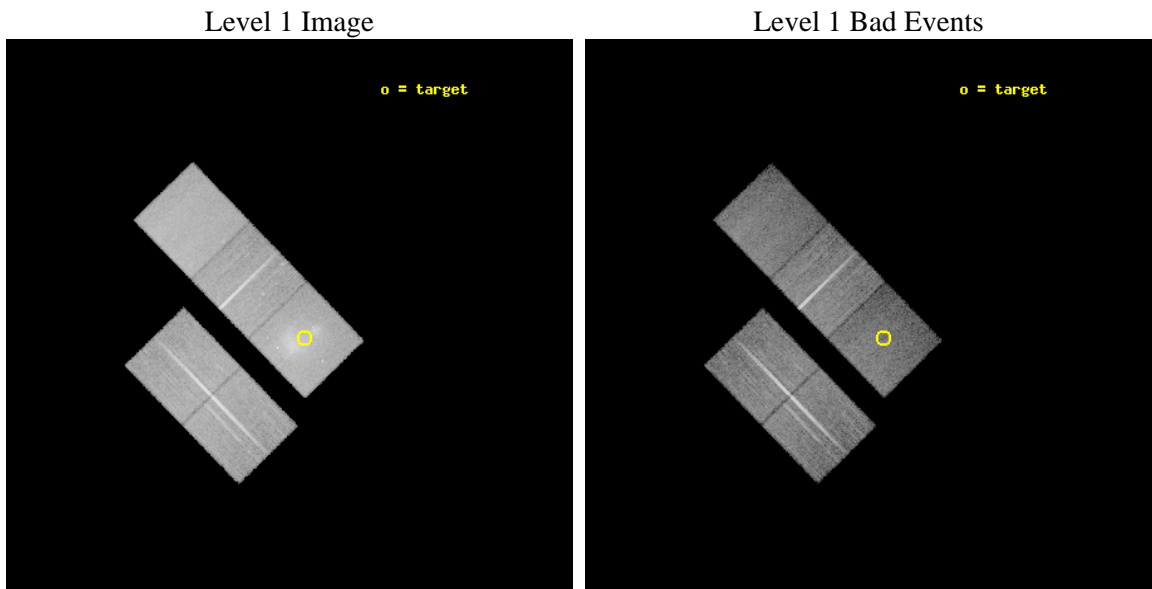
seq_num	800151	Sequence number
obs_id	2212	Observation id
title	THE HYDRODYNAMICS OF MERGING CLUSTERS OF GALAXIES	Proposal title
observer	Dr. Laurence David	Principal investigator
object	A2744	Source name
dtcycle	0	
cycle	P	events from which exps? Prim/Second/Both
ra_targ	3.554167	Observer's specified target RA [deg]
dec_targ	-30.377778	Observer's specified target Dec [deg]
ra_nom	3.5859183647251	Nominal RA [deg]
dec_nom	-30.352218620727	Nominal Dec [deg]
roll_nom	45.800241462134	Nominal Roll [deg]
revision	4	Processing version of data
ontime	25144.099951655	Sum of GTIs [s]
livetime	24815.573774969	Livetime [s]
ontime2	25144.099951655	Sum of GTIs [s]
ontime3	25140.95898141	Sum of GTIs [s]
ontime5	25144.099951655	Sum of GTIs [s]
ontime6	25144.099951655	Sum of GTIs [s]
ontime7	25144.099951655	Sum of GTIs [s]
l2events	205225	Number of level 2 events



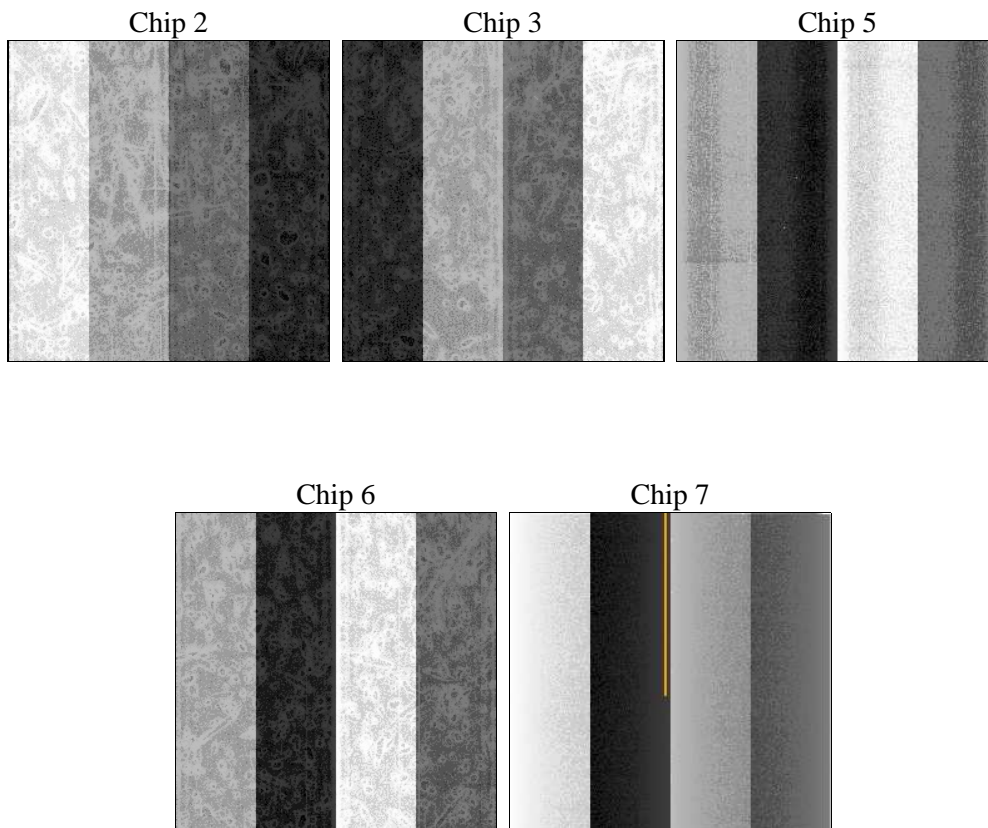
2 OBI

2.1 OBI

2.1.1 Images



2.1.2 Bias



2.1.3 Parameters

obi_num	0	Obi number	sched_exp_time	25000.000000	[s] Scheduled observation exposure time
ascdsver	8.4.5	Processing system revision	ontime	25144.099951655	Sum of GTIs [s]
caldbver	4.5.1.1	 	ontime2	25144.099951655	Sum of GTIs [s]
date	2012-09-23T15:31:37	Date and time of file creation	ontime3	25140.95898141	Sum of GTIs [s]
revision	4	Processing version of data	ontime5	25144.099951655	Sum of GTIs [s]
			ontime6	25144.099951655	Sum of GTIs [s]
			ontime7	25144.099951655	Sum of GTIs [s]
			l1events	750629	Number of level 1 events

2.1.4 Events

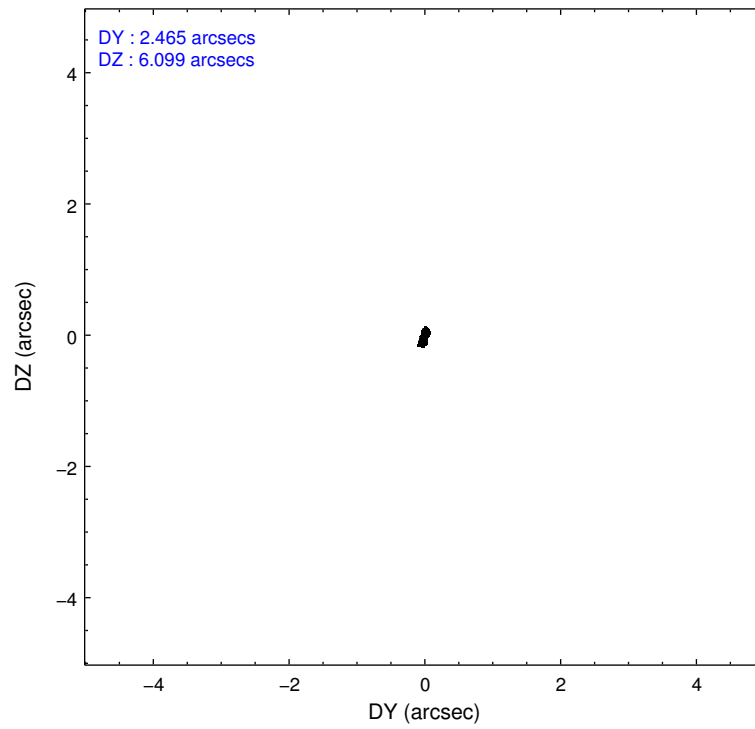
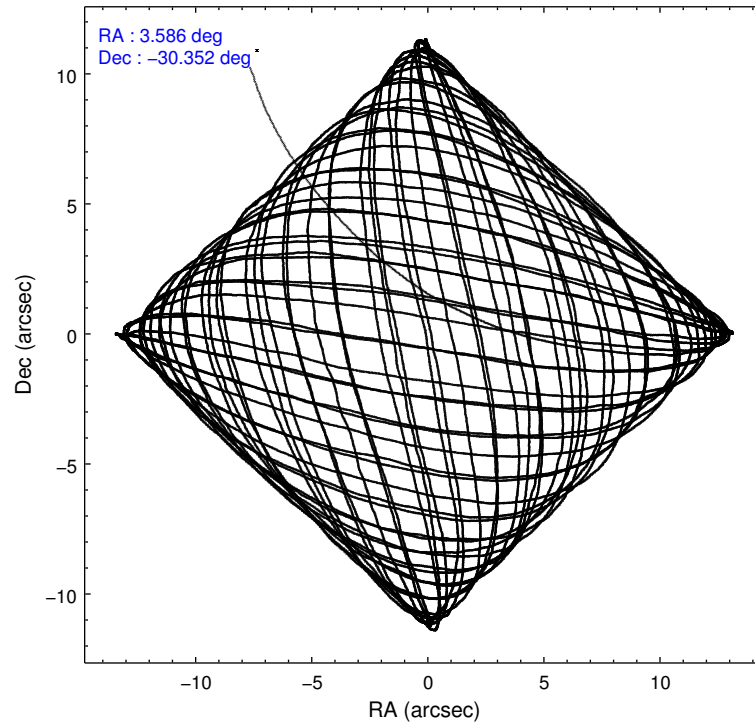
	ccd 2	ccd 3	ccd 5	ccd 6	ccd 7
level 1 events	138139	133414	165141	137005	176930
rejected events	125481	121505	86979	123208	78409
rejected %	90%	91%	52%	89%	44%

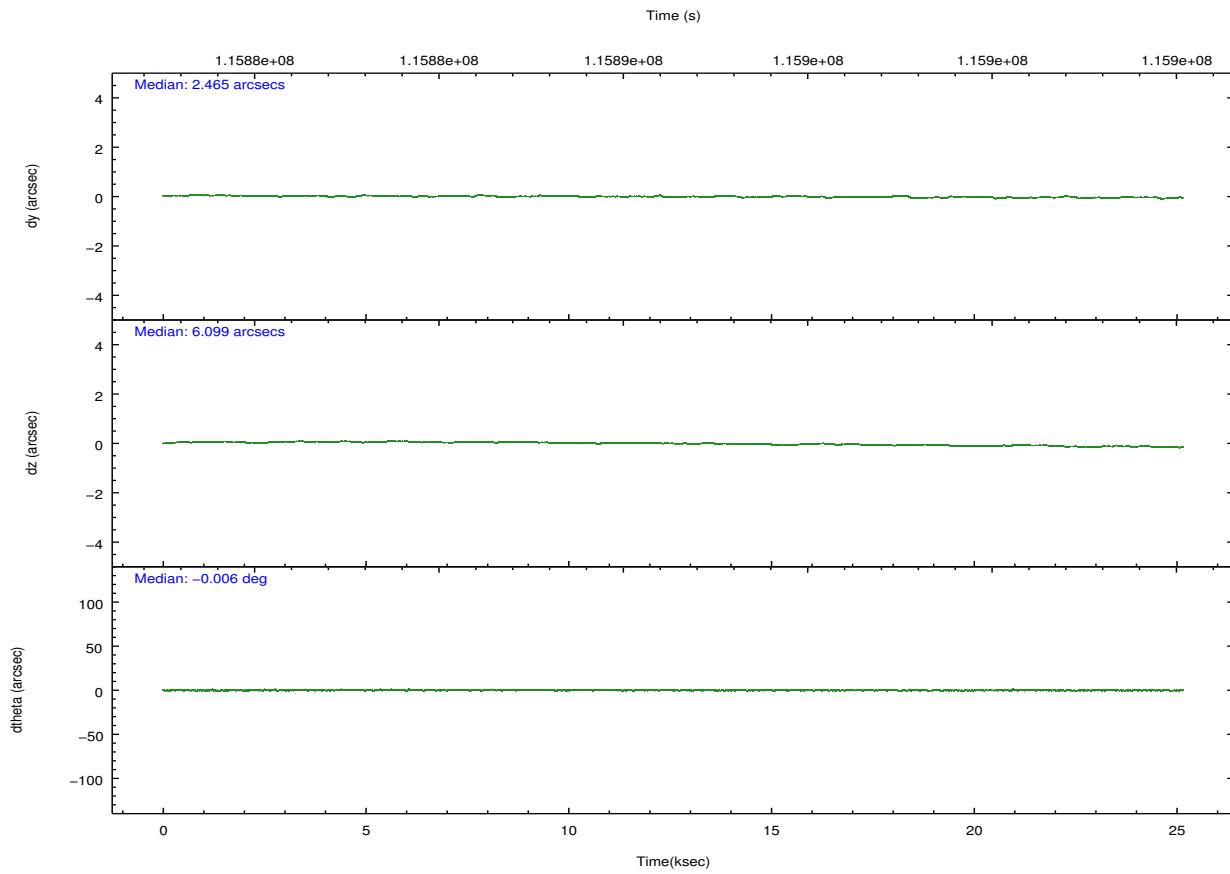
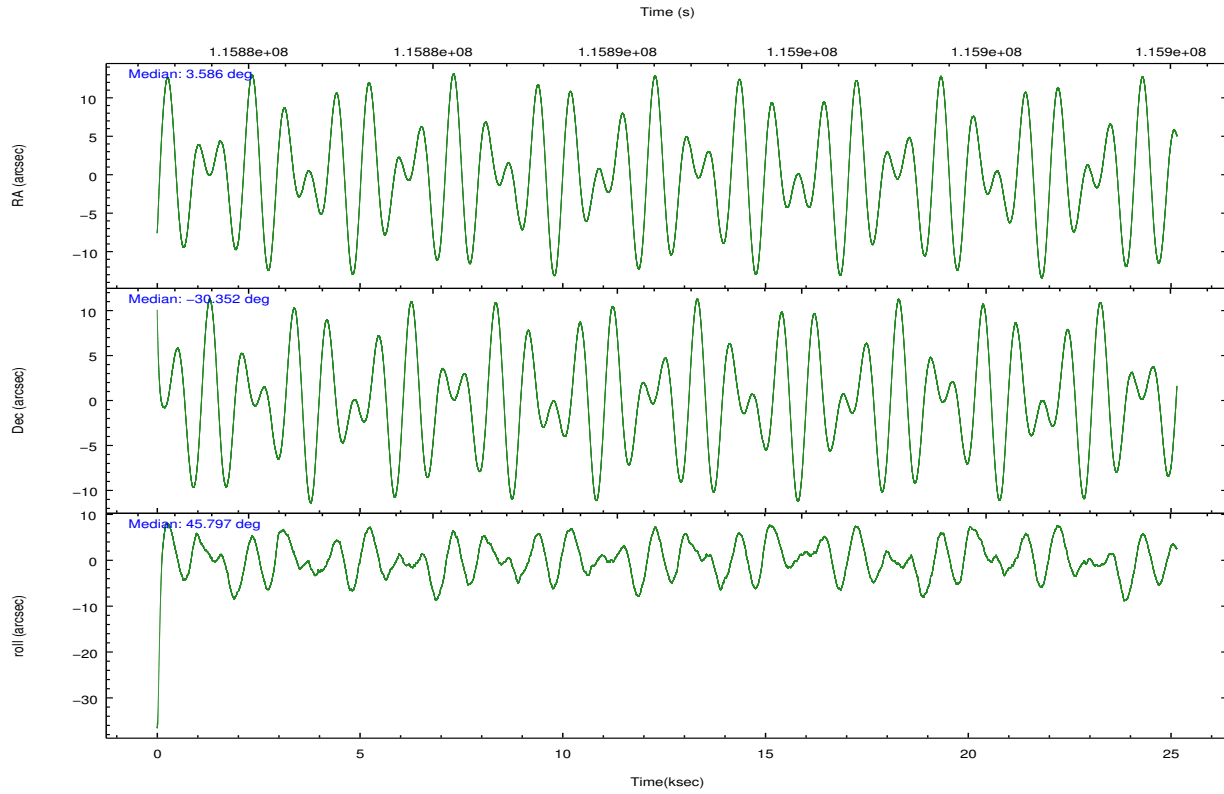
	ccd 2	ccd 3	ccd 5	ccd 6	ccd 7
grade 0 events	4795	4373	5727	5406	18183
	3%	3%	3%	3%	10%
grade 1 events	55	55	104	68	123
	0%	0%	0%	0%	0%
grade 2 events	2920	2471	23215	2935	22223
	2%	1%	14%	2%	12%
grade 3 events	1470	1520	4066	1545	10406
	1%	1%	2%	1%	5%
grade 4 events	1433	1408	3863	1532	10364
	1%	1%	2%	1%	5%
grade 5 events	3830	4545	14294	4958	15043
	2%	3%	8%	3%	8%
grade 6 events	2335	2419	43105	2760	39088
	1%	1%	26%	2%	22%
grade 7 events	121301	116623	70767	117801	61500
	87%	87%	42%	85%	34%

2.2 Compared Parameters

Parameter	Planned	Actual	Parameter	Planned	Actual
Instrument	ACIS	ACIS	Obspar format version number	7	7
Detector	ACIS-23567	ACIS-23567	Obspar file type	PREDICTED	ACTUAL
Grating	NONE	NONE	Obspar update status	NONE	UPDATED
Data mode	VFAINT	VFAINT	Number of optional ACIS chips dropped	0	0
Observation mode	POINTING	POINTING	On-chip summing requested	N	N
[deg] Pointing RA	3.578491	3.585918364725092	Subarray requested	NONE	NONE
[deg] Pointing Dec	-30.378723	-30.35221862072685	Alternating exposures requested	N	N
[deg] Pointing Roll	45.639875	45.80024146213386	[s] Primary exposure time	0.000000	3.1
[mm] SIM focus pos	-0.684267	-0.6828225247311905			
[mm] SIM defocus	0	0.001444936568705701			
[mm] SIM translation stage pos	-190.132523	-190.1400660498719			
[mm] SIM translation stage offset	0	0.00754346686406393			
[s] Observation start time (MET)	115878922.184000	115877636.82458			
Observation start date	2001-09-03T04:34:18	2001-09-03T04:13:56			
[s] Observation end time (MET)	115903922.184000	115904406.75064			
Observation end date	2001-09-03T11:30:58	2001-09-03T11:40:06			
Read mode	TIMED	TIMED			

2.3 Aspect



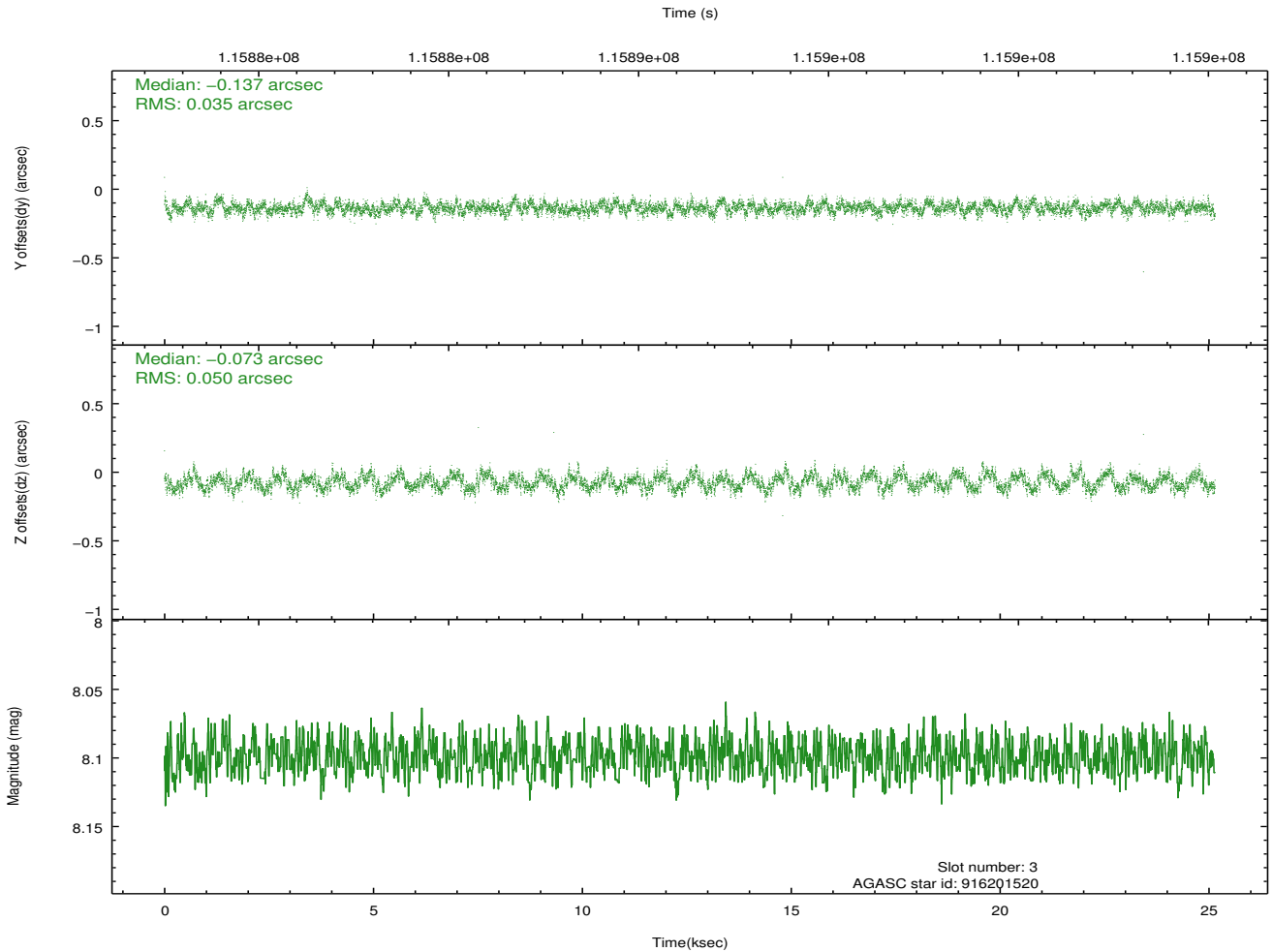
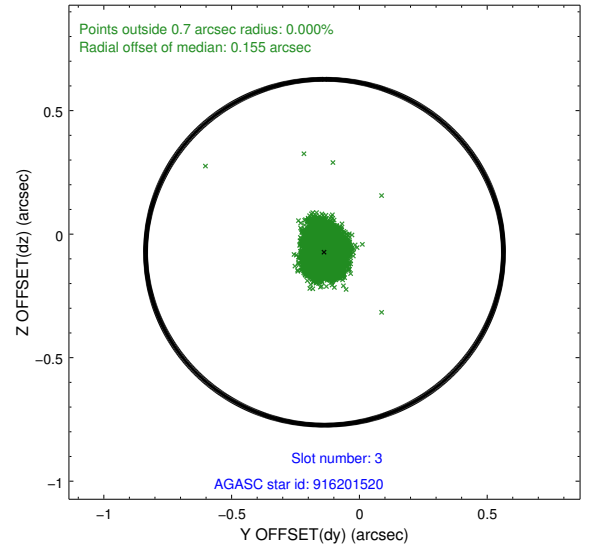
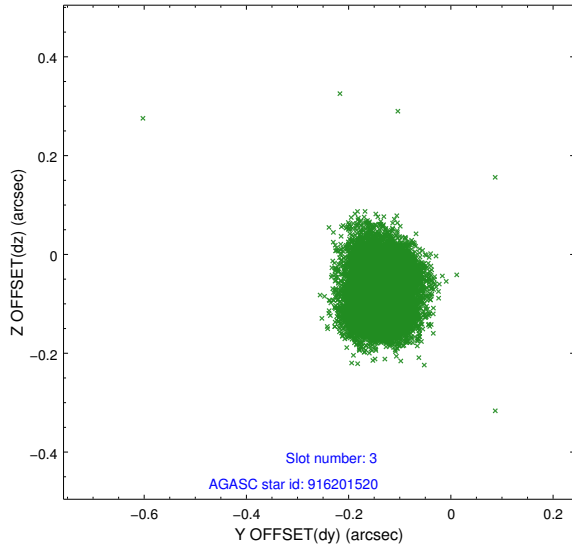


Slot Statistics

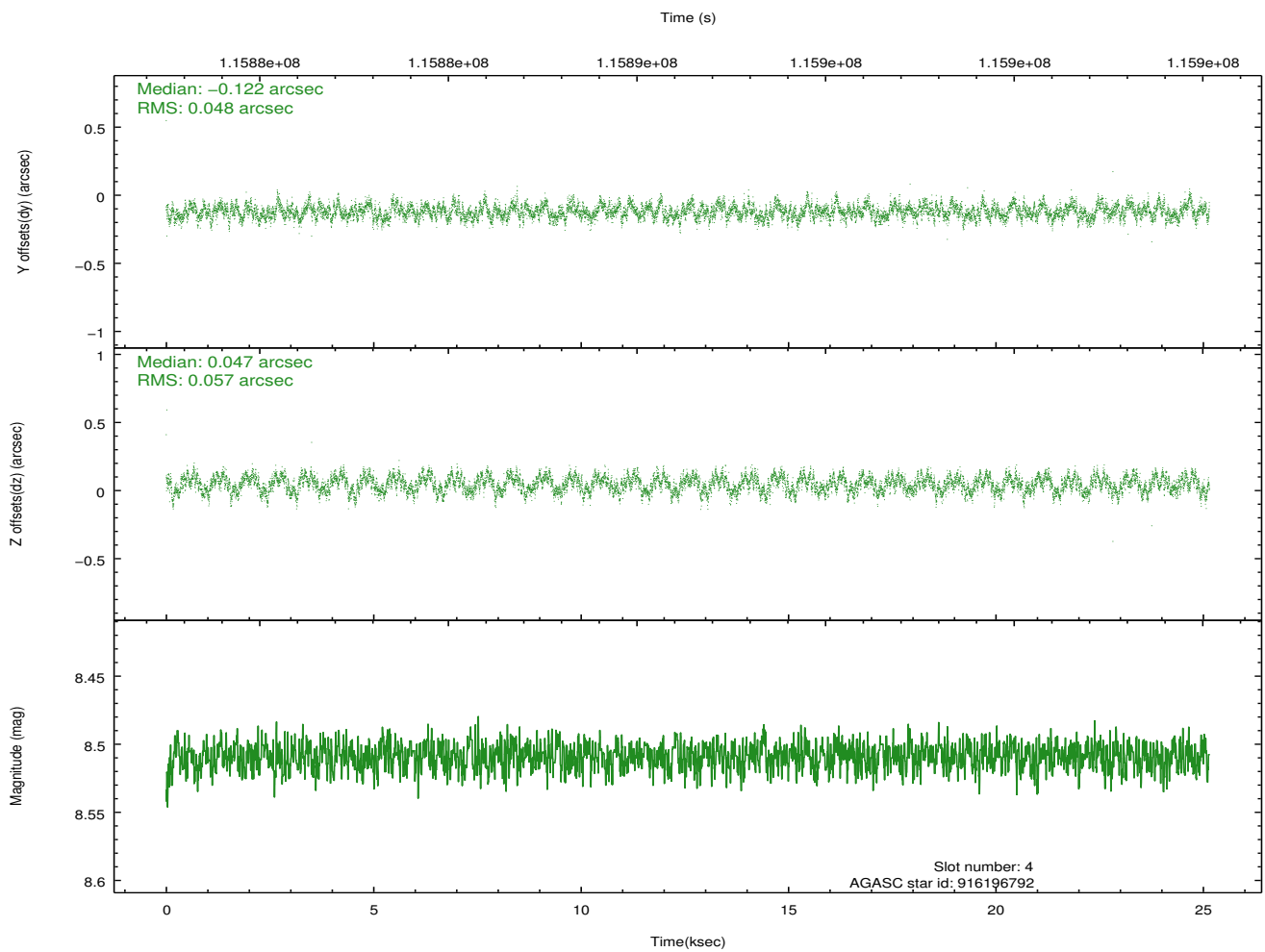
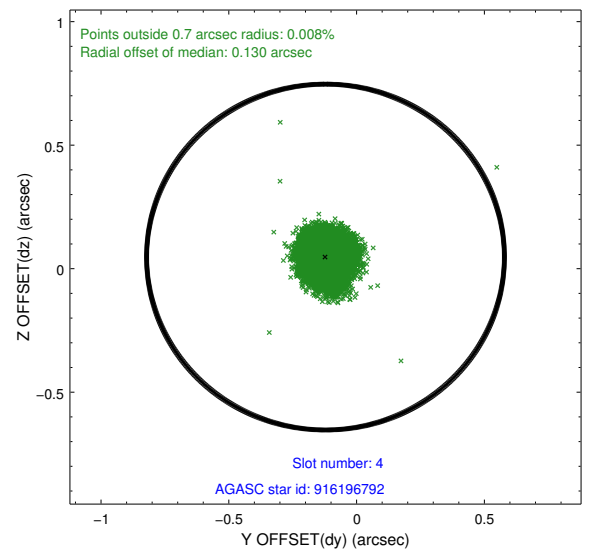
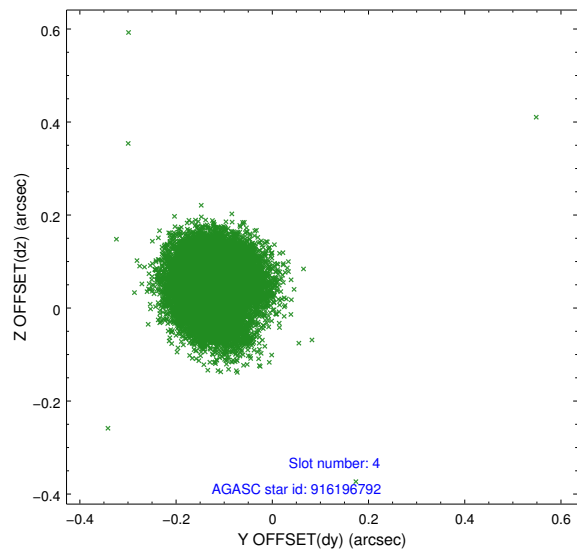
slot	status	id	mag	n_pts	med_dy	med_dz	dr1	dr2	ra	dec	mean_y	mean_z
0	FID	ACIS-S-2	7.11	6134	-0.037	0.000	0.007	0.010	0.000000	0.000000	-755.08	-1727.25
1	FID	ACIS-S-4	7.20	6134	-0.021	0.018	0.005	0.009	0.000000	0.000000	2158.11	181.21
2	FID	ACIS-S-5	7.24	6134	0.027	-0.009	0.007	0.011	0.000000	0.000000	-1807.76	174.88
3	GUIDE	916201520	8.10	12267	-0.137	-0.073	0.065	0.101	3.245363	-30.057887	98.44	1549.93
4	GUIDE	916196792	8.51	12265	-0.122	0.047	0.081	0.122	4.170313	-30.434617	1136.70	-1455.83
5	GUIDE	916200592	8.67	12264	0.013	0.123	0.071	0.110	3.136714	-30.859834	-2195.27	-235.70
6	GUIDE	841356624	9.69	12251	0.028	-0.089	0.098	0.159	3.564472	-29.566469	2059.38	2077.30
7	GUIDE	916199936	9.58	12230	0.228	-0.022	0.207	0.289	3.810297	-30.935041	-931.84	-1911.04

2.4 Star Slots

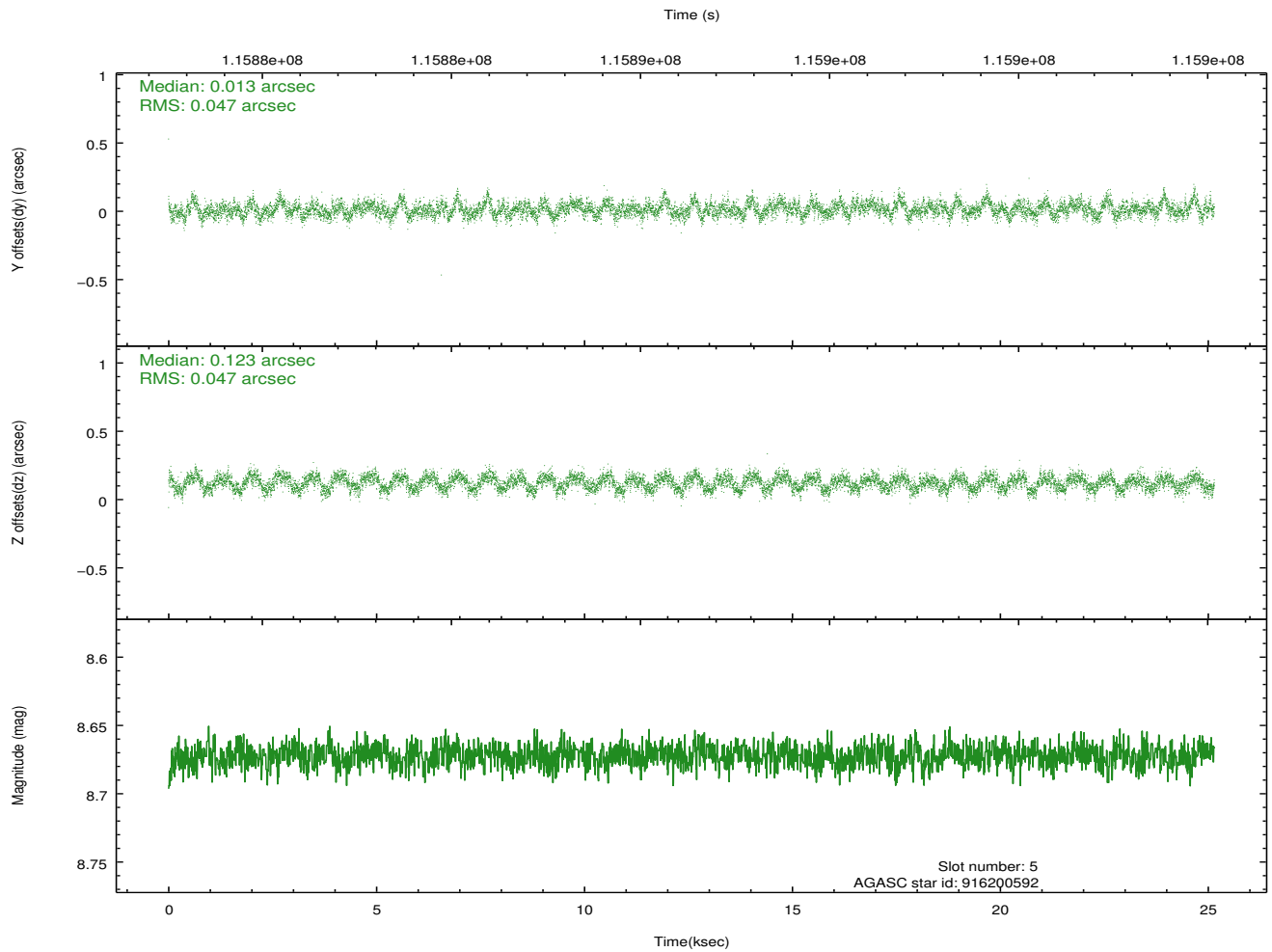
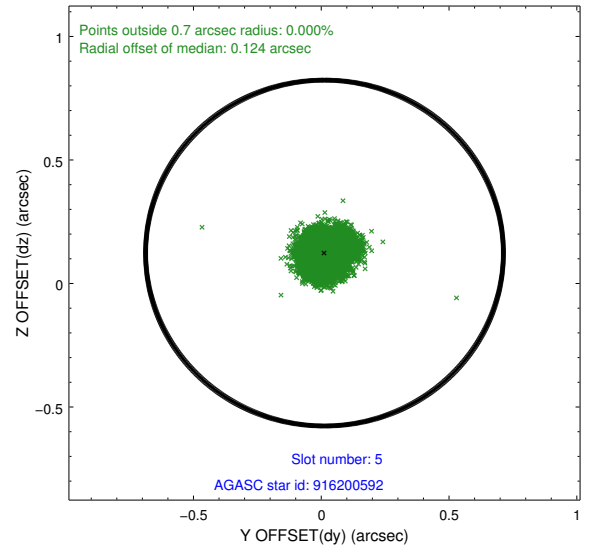
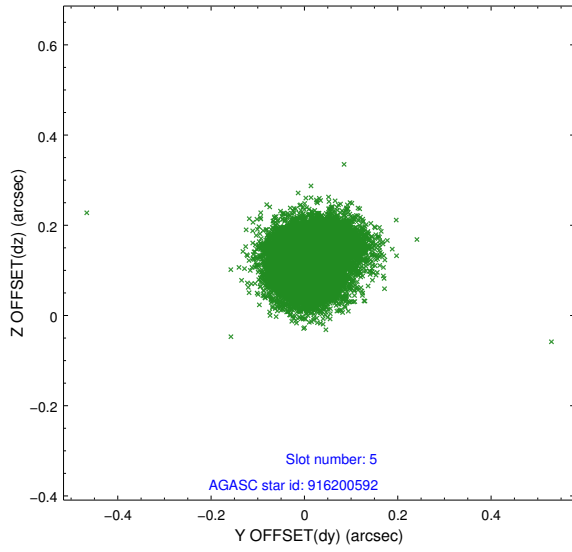
2.4.1 Slot 3



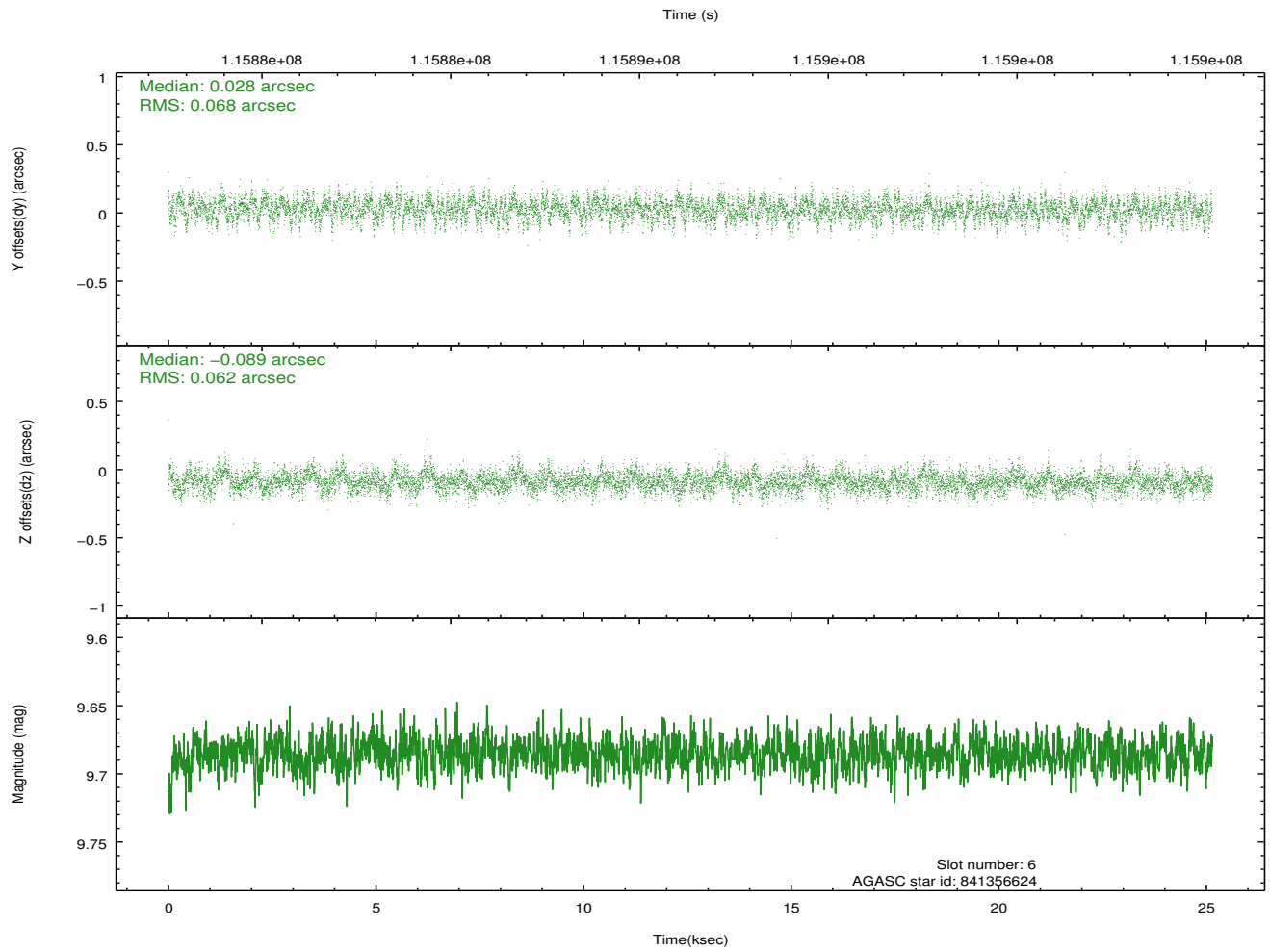
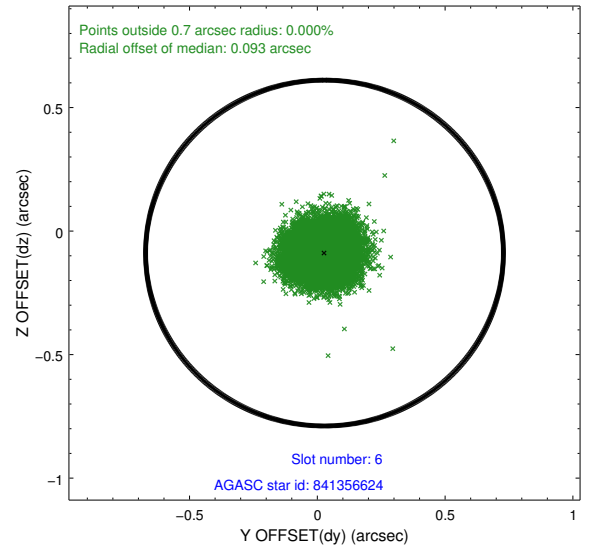
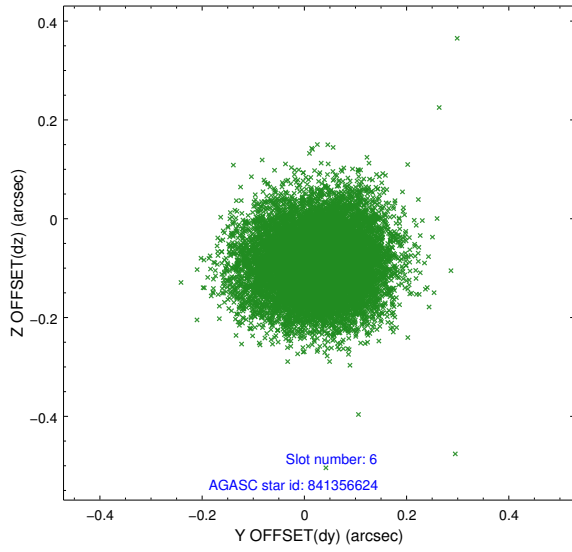
2.4.2 Slot 4



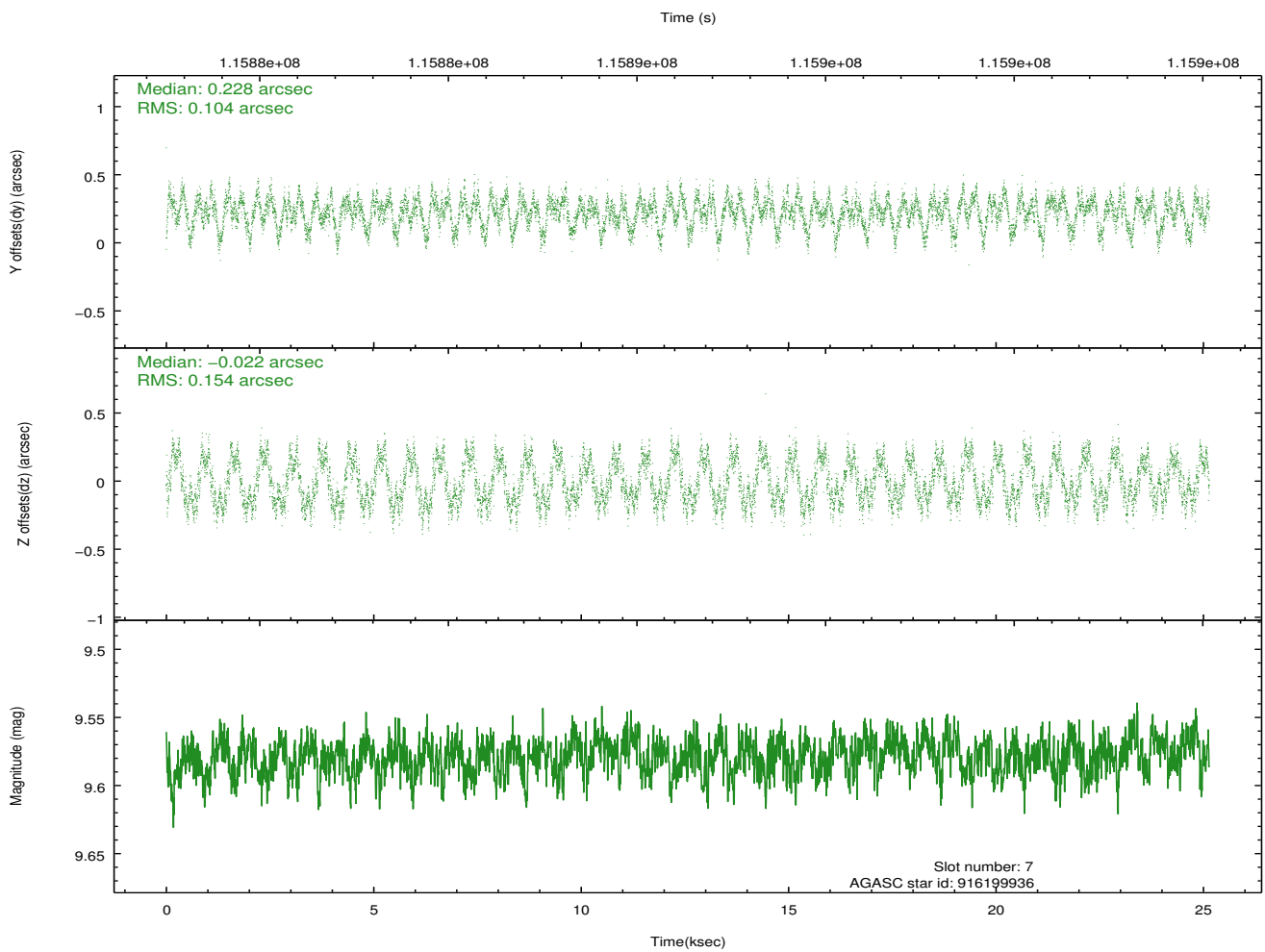
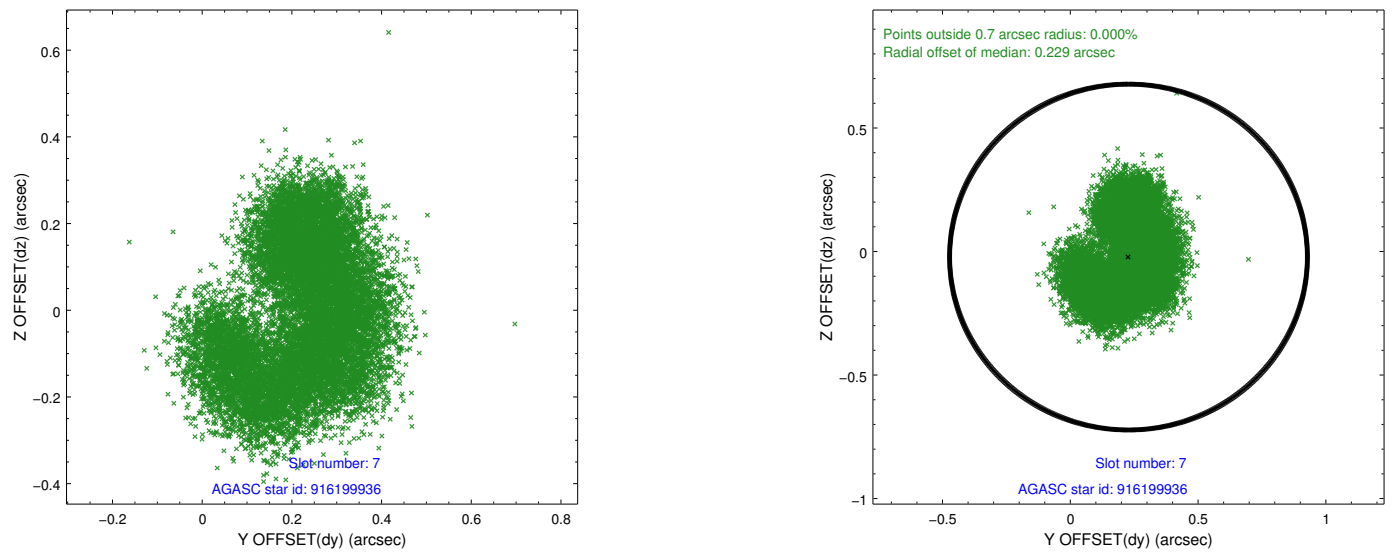
2.4.3 Slot 5



2.4.4 Slot 6

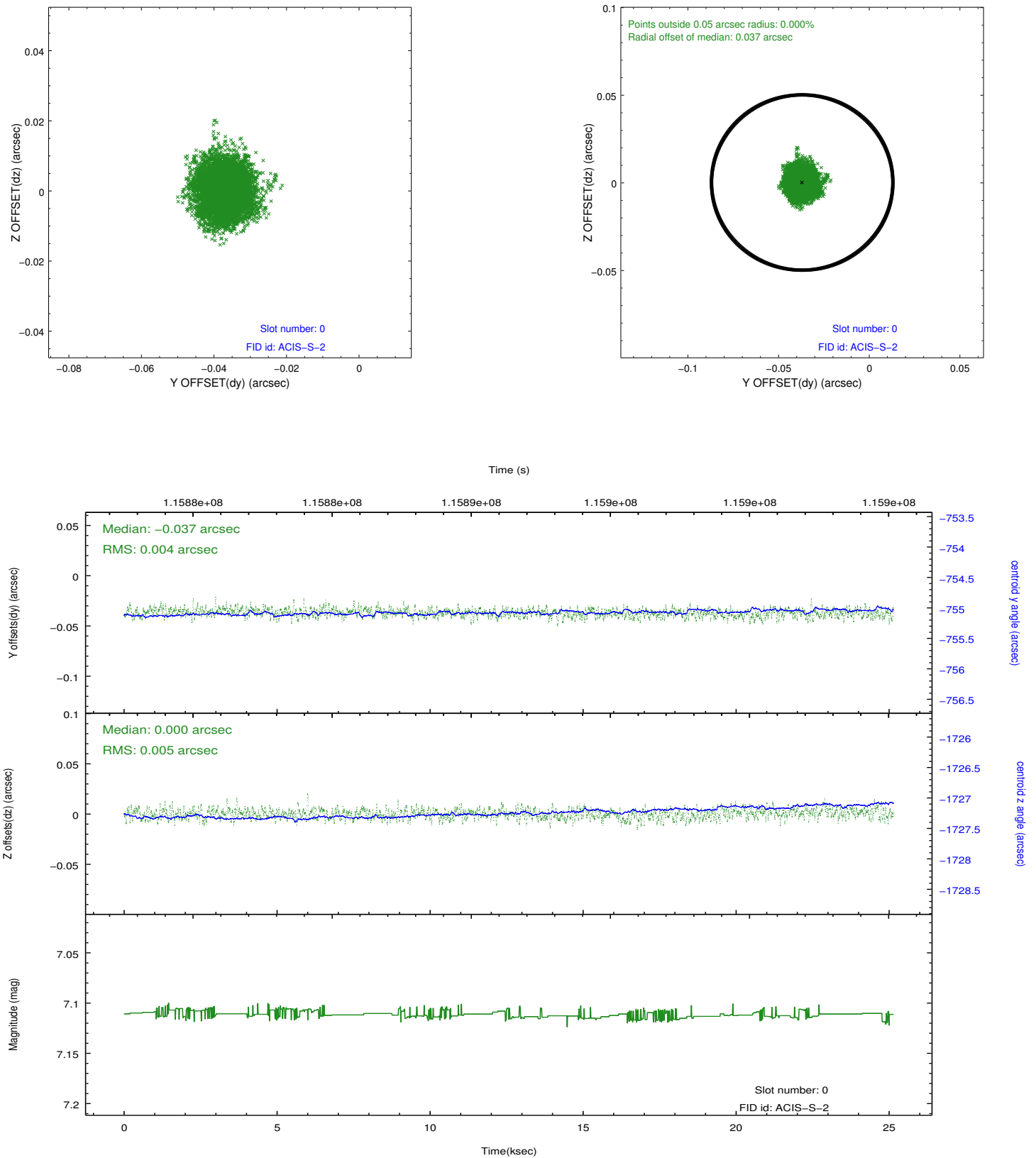


2.4.5 Slot 7

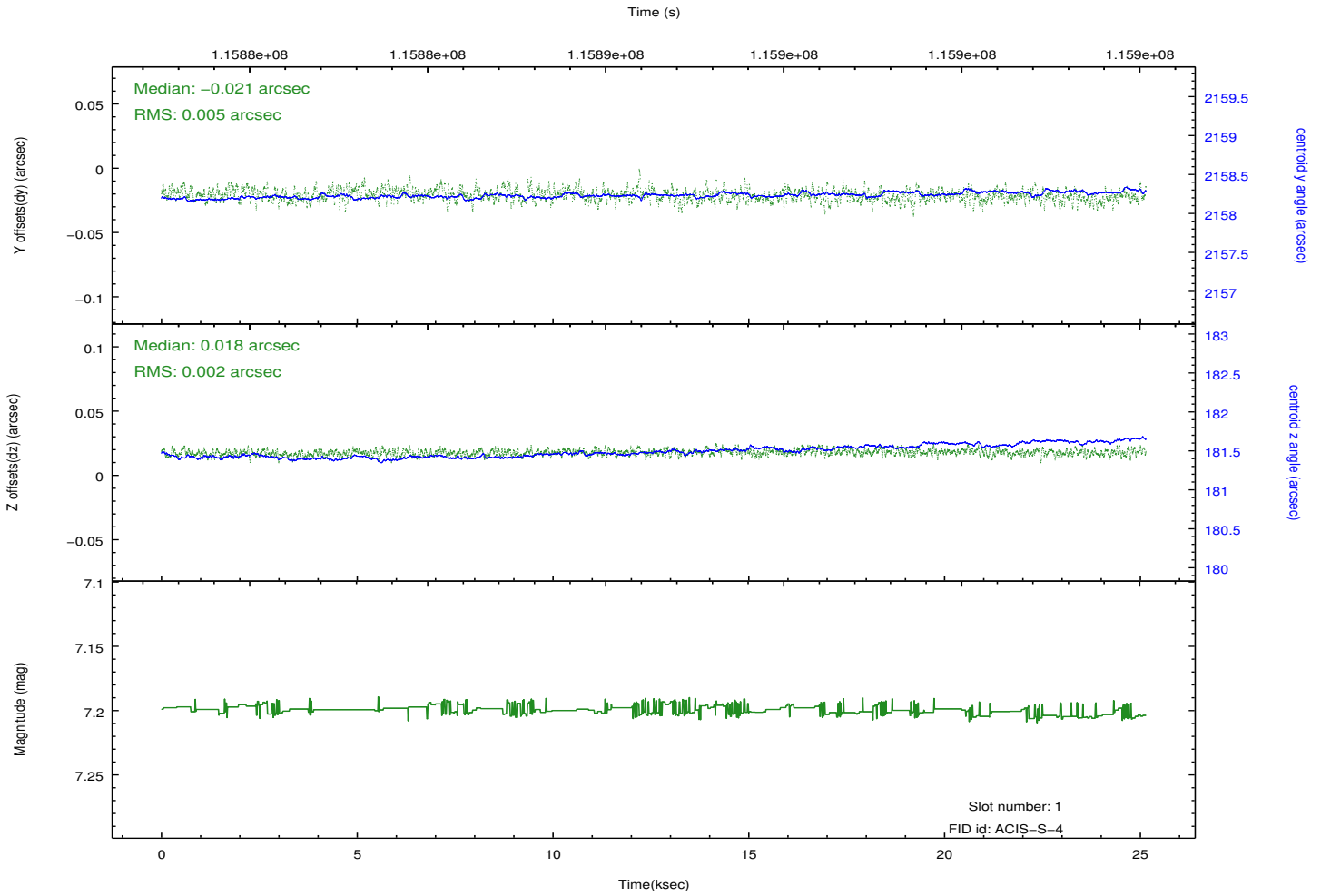
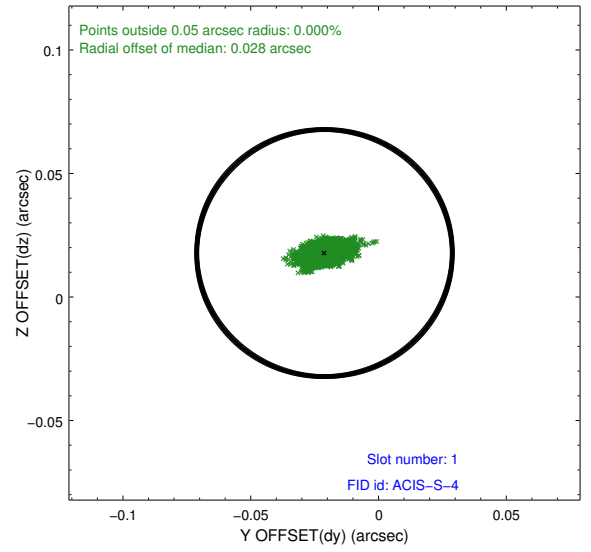
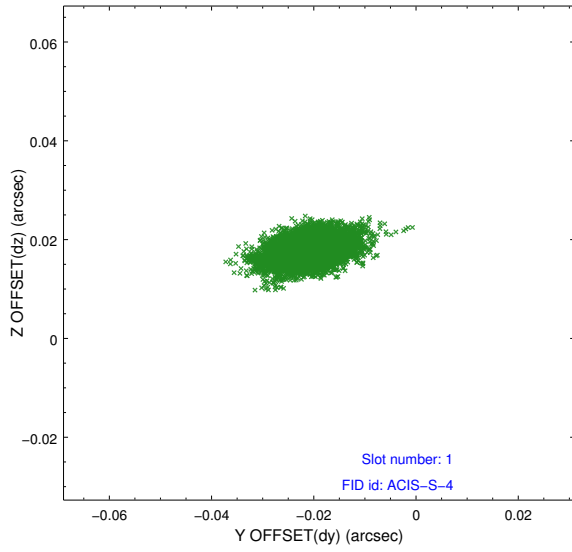


2.5 FID Slots

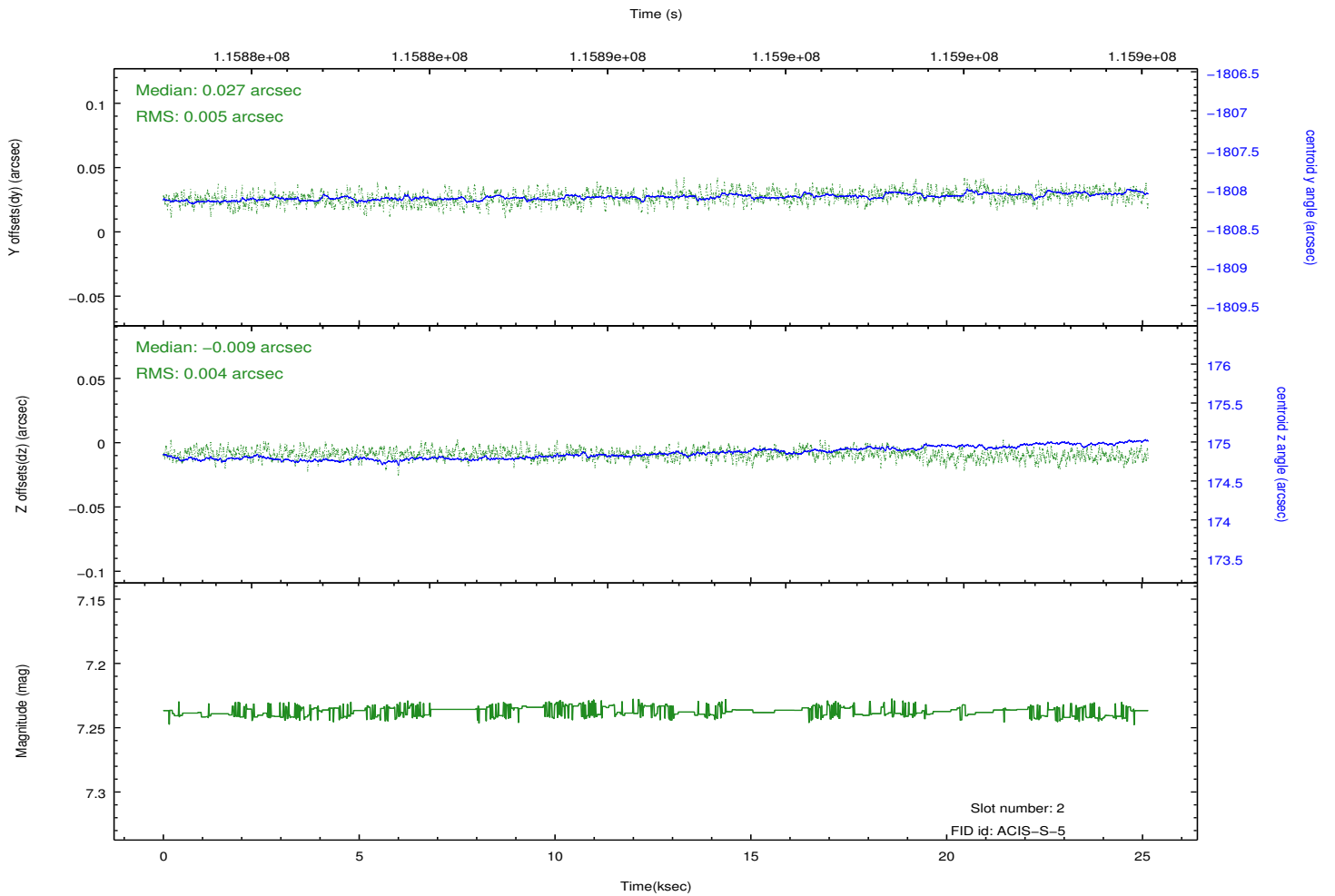
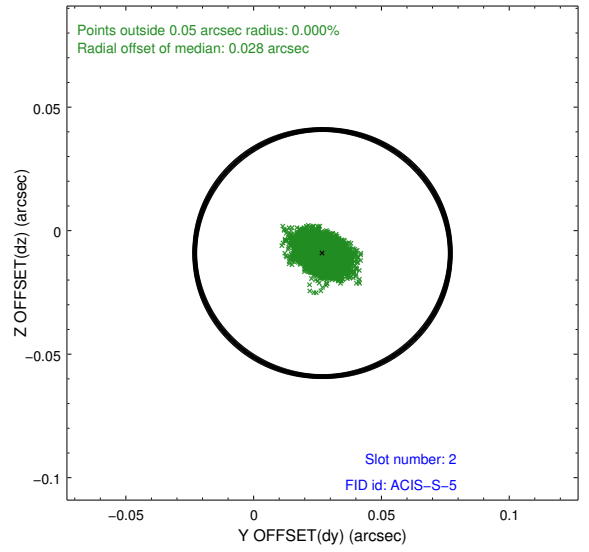
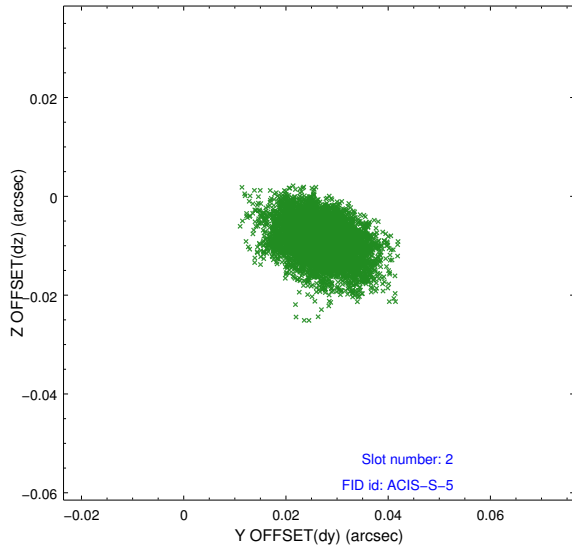
2.5.1 Slot 0



2.5.2 Slot 1



2.5.3 Slot 2



A Summary

A.1 Status

V&V Scientist	Beth Sundheim
V&V Date (YYYY-MM-DD)	2012.09.26
V&V Edition	1
V&V Disposition and Status	OK
V&V Charge Time	25.144

A.2 Comments