

# V&V Reference Report

## L2 ASCDS Version : 8.4.5

Observation 2582 - L2 Version 4  
Chandra X-Ray Center

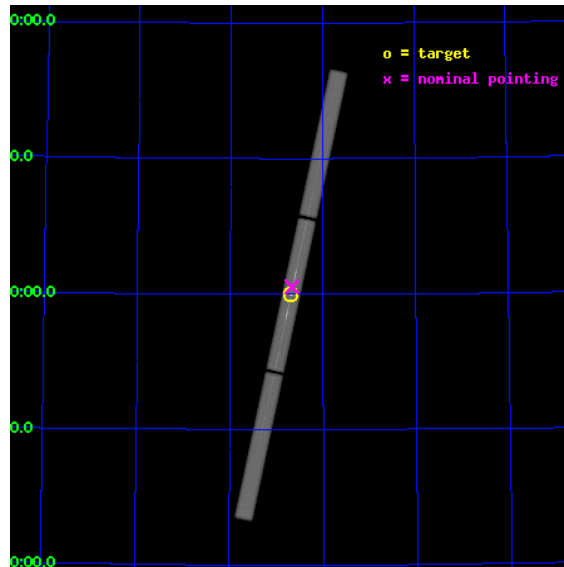
L2 Processing Date : Oct 15 2012

## Contents

<b>1</b>	<b>Front</b>	<b>2</b>
<b>2</b>	<b>OBI</b>	<b>3</b>
2.1	OBI . . . . .	3
2.1.1	Images . . . . .	3
2.1.2	Parameters . . . . .	4
2.1.3	Events . . . . .	4
2.2	Compared Parameters . . . . .	5
2.3	Aspect . . . . .	6
2.4	Star Slots . . . . .	9
2.4.1	Slot 3 . . . . .	9
2.4.2	Slot 4 . . . . .	10
2.4.3	Slot 5 . . . . .	11
2.4.4	Slot 6 . . . . .	12
2.4.5	Slot 7 . . . . .	13
2.5	FID Slots . . . . .	14
2.5.1	Slot 0 . . . . .	14
2.5.2	Slot 1 . . . . .	15
2.5.3	Slot 2 . . . . .	16
<b>3</b>	<b>Gratings</b>	<b>17</b>
3.1	LETG Arm . . . . .	17
<b>A</b>	<b>Summary</b>	<b>19</b>
A.1	Status . . . . .	19
A.2	Comments . . . . .	19

# 1 Front

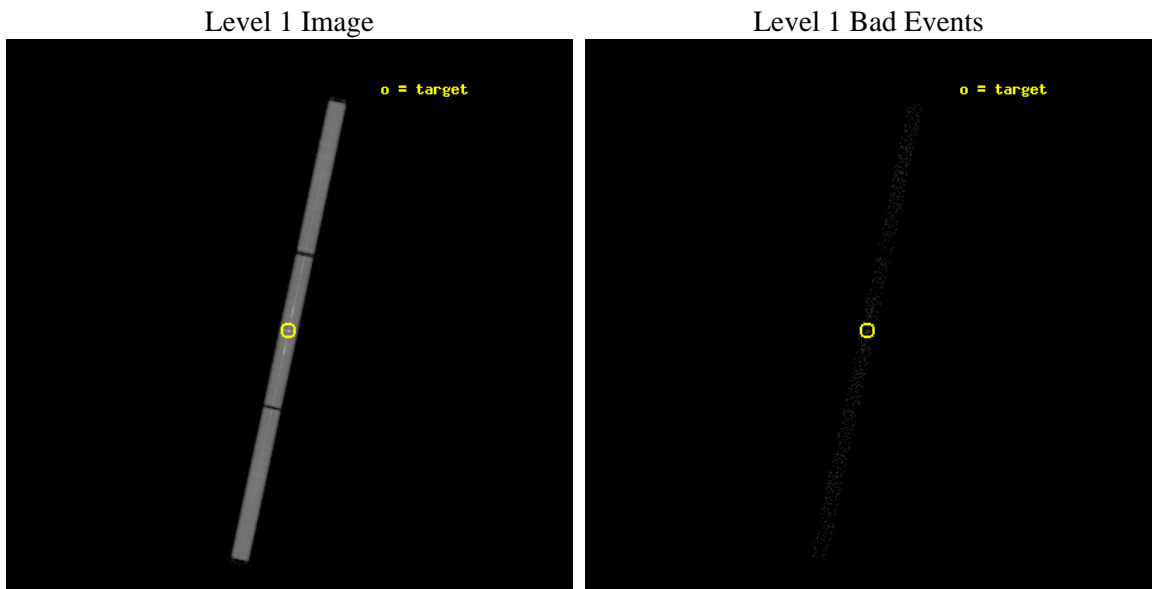
seq_num	290138	Sequence number
obs_id	2582	Observation id
title	AO3 CALIBRATION OBSERVATIONS OF CAPELLA	Proposal title
observer	Dr. CXC Calibration	Principal investigator
object	CAPELLA	Source name
ra_targ	79.17625	Observer's specified target RA [deg]
dec_targ	45.997889	Observer's specified target Dec [deg]
ra_nom	79.167485475328	Nominal RA [deg]
dec_nom	46.026977564028	Nominal Dec [deg]
roll_nom	102.12018047704	Nominal Roll [deg]
revision	4	Processing version of data
ontime	28832.482444167	[s]
livetime	28658.275222789	Ontime multiplied by DTCOR
l2events	1438999	Number of level 2 events



## 2 OBI

### 2.1 OBI

#### 2.1.1 Images



## 2.1.2 Parameters

obi_num	3	Obi number	sched_exp_time	29000.000000	[s] Scheduled observation exposure time
ascdsver	8.4.5	Processing system revision	ontime	28832.482444167	[s]
caldsver	4.5.2	&#160	l1events	1955020	Number of level 1 events
date	2012-10-15T13:15:13	Date and time of file creation			
revision	4	Processing version of data			

## 2.1.3 Events

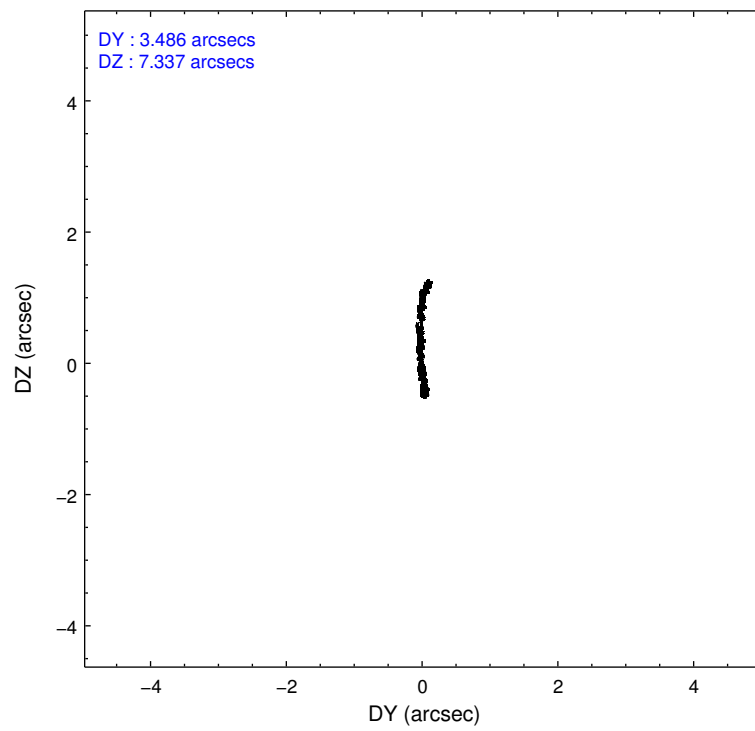
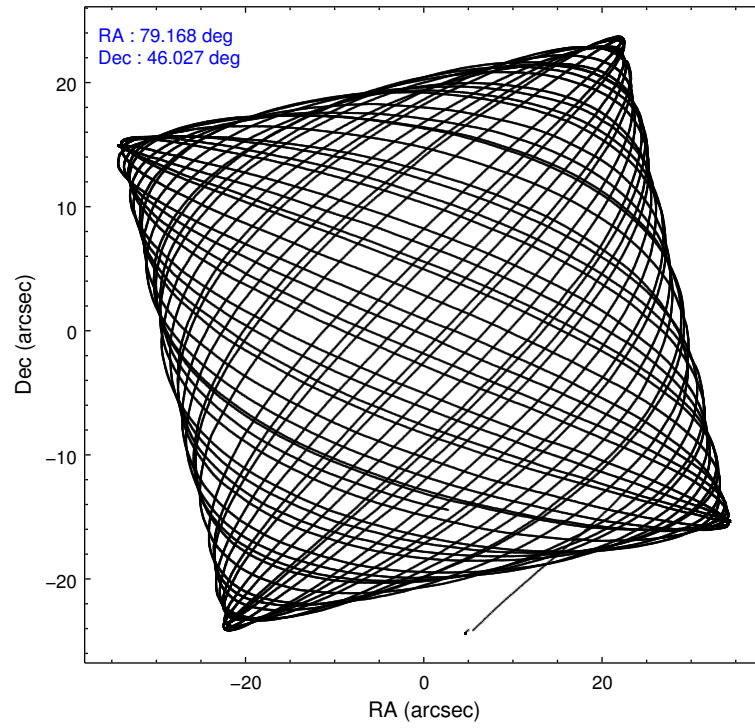
### Level 1 Events

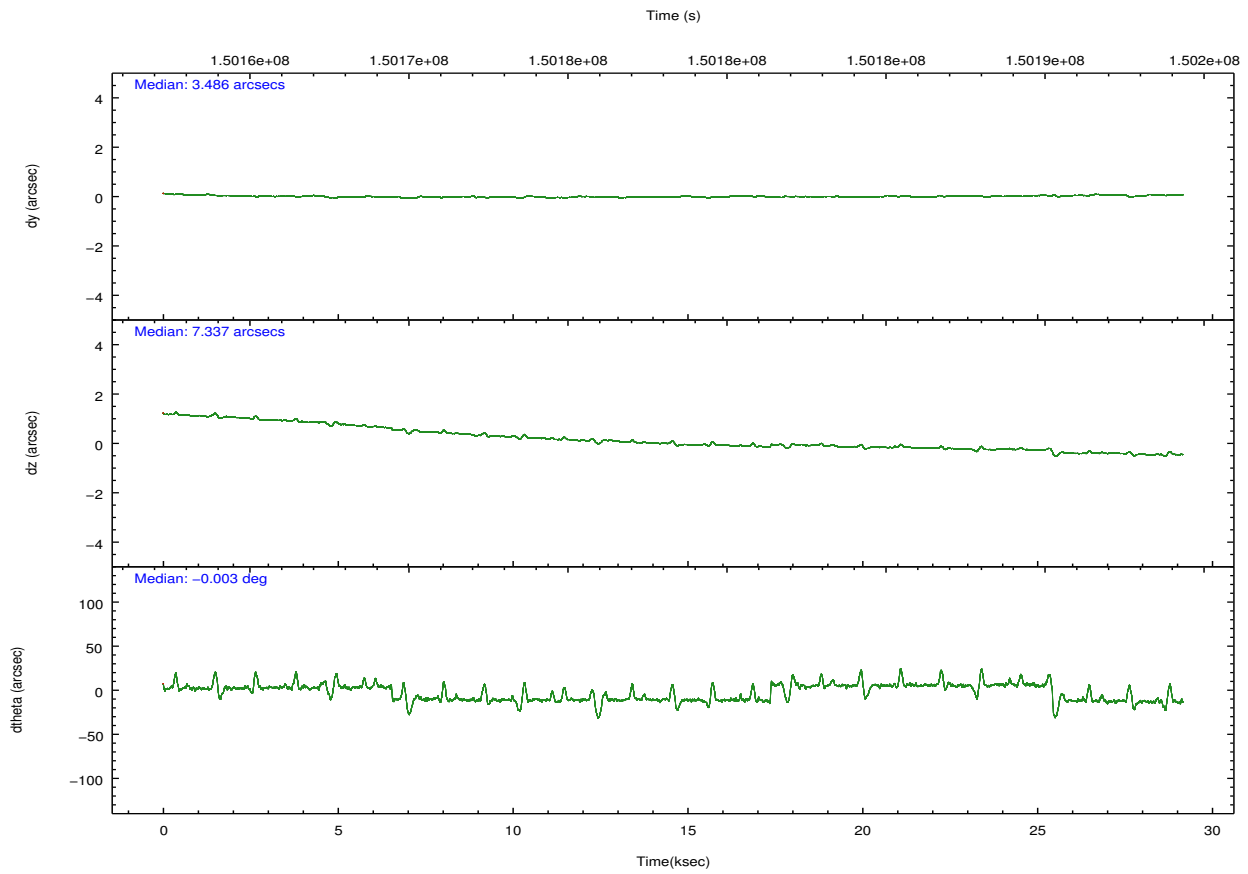
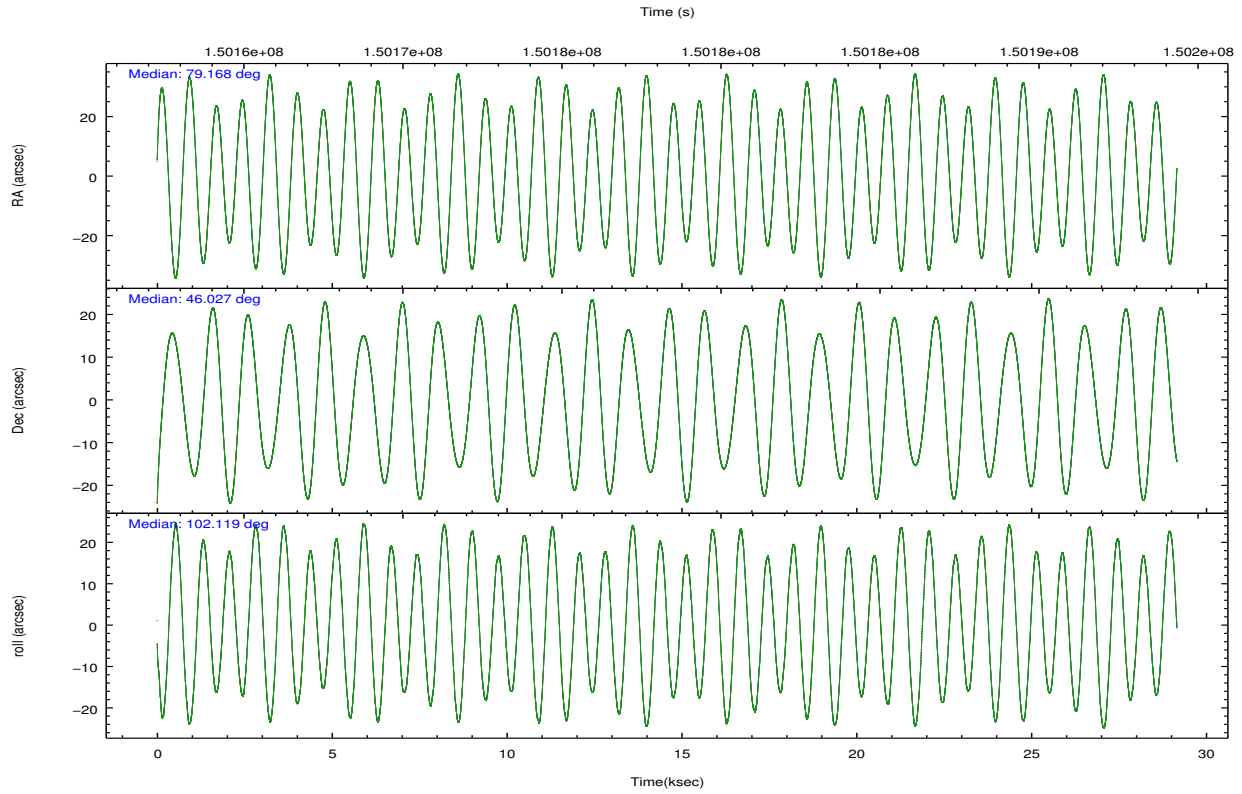
	<b>segment 1</b>	<b>segment 2</b>	<b>segment 3</b>
level 1 events	613658	725229	616133
rejected events	2156	2489	2281
rejected %	0%	0%	0%

## 2.2 Compared Parameters

Parameter	Planned	Actual	Parameter	Planned	Actual
Instrument	HRC	HRC	Obspar format version number	7	7
Detector	HRC-S	HRC-S	Obspar file type	PREDICTED	ACTUAL
Grating	LETG	LETG	Obspar update status	NONE	UPDATED
Data mode	OBSERVING	OBSERVING			
Observation mode	POINTING	POINTING			
[deg] Pointing RA	79.196602	79.16748547532768			
[deg] Pointing Dec	46.006699	46.0269775640278			
[deg] Pointing Roll	102.031888	102.1201804770362			
[mm] SIM focus pos	-1.429586	-1.428180813131781			
[mm] SIM defocus	0.1037507710433287	0.1051558262725154			
[mm] SIM translation stage pos	250.455976	250.466033080201			
[mm] SIM translation stage offset	0	-0.01005468664627074			
[s] Observation start time (MET)	150163882.184000	150163136.88831			
Observation start date	2002-10-05T00:10:18	2002-10-04T23:58:56			
[s] Observation end time (MET)	150192882.184000	150194101.62709			
Observation end date	2002-10-05T08:13:38	2002-10-05T08:35:01			

## 2.3 Aspect



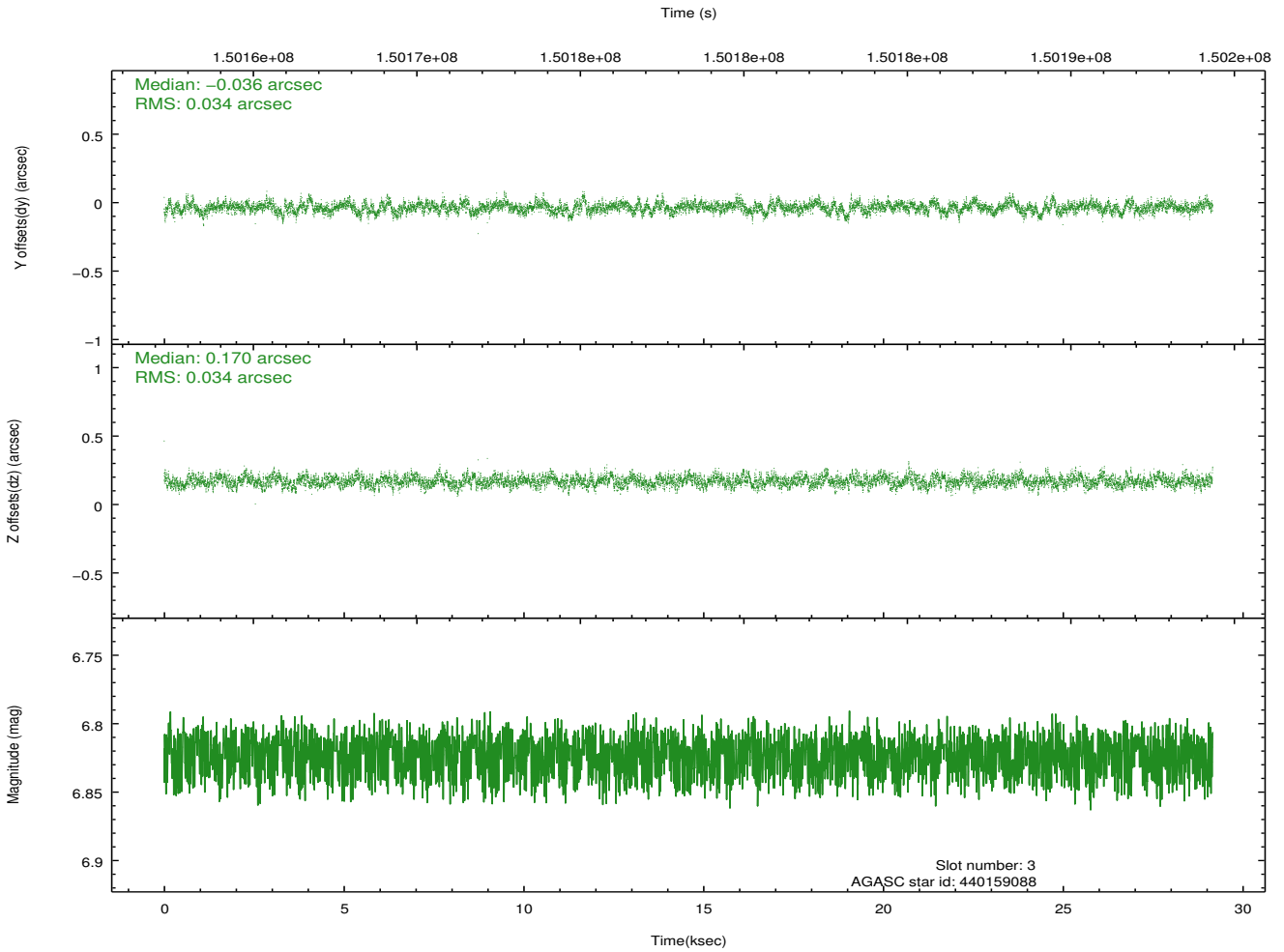
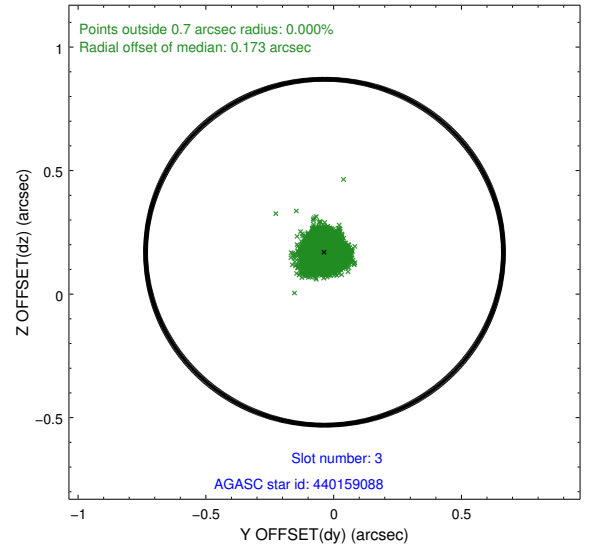
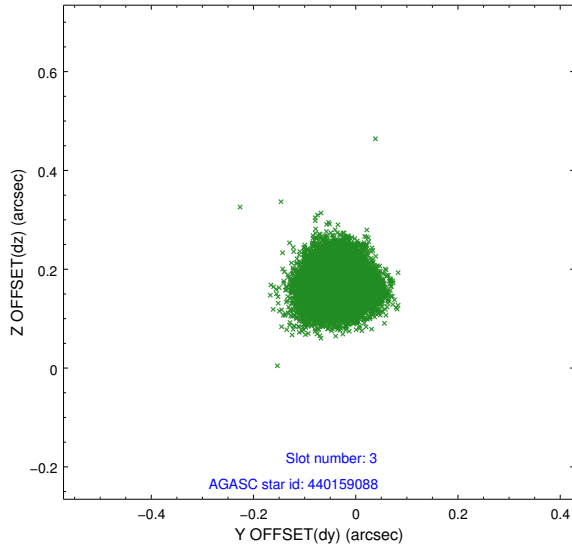


### Slot Statistics

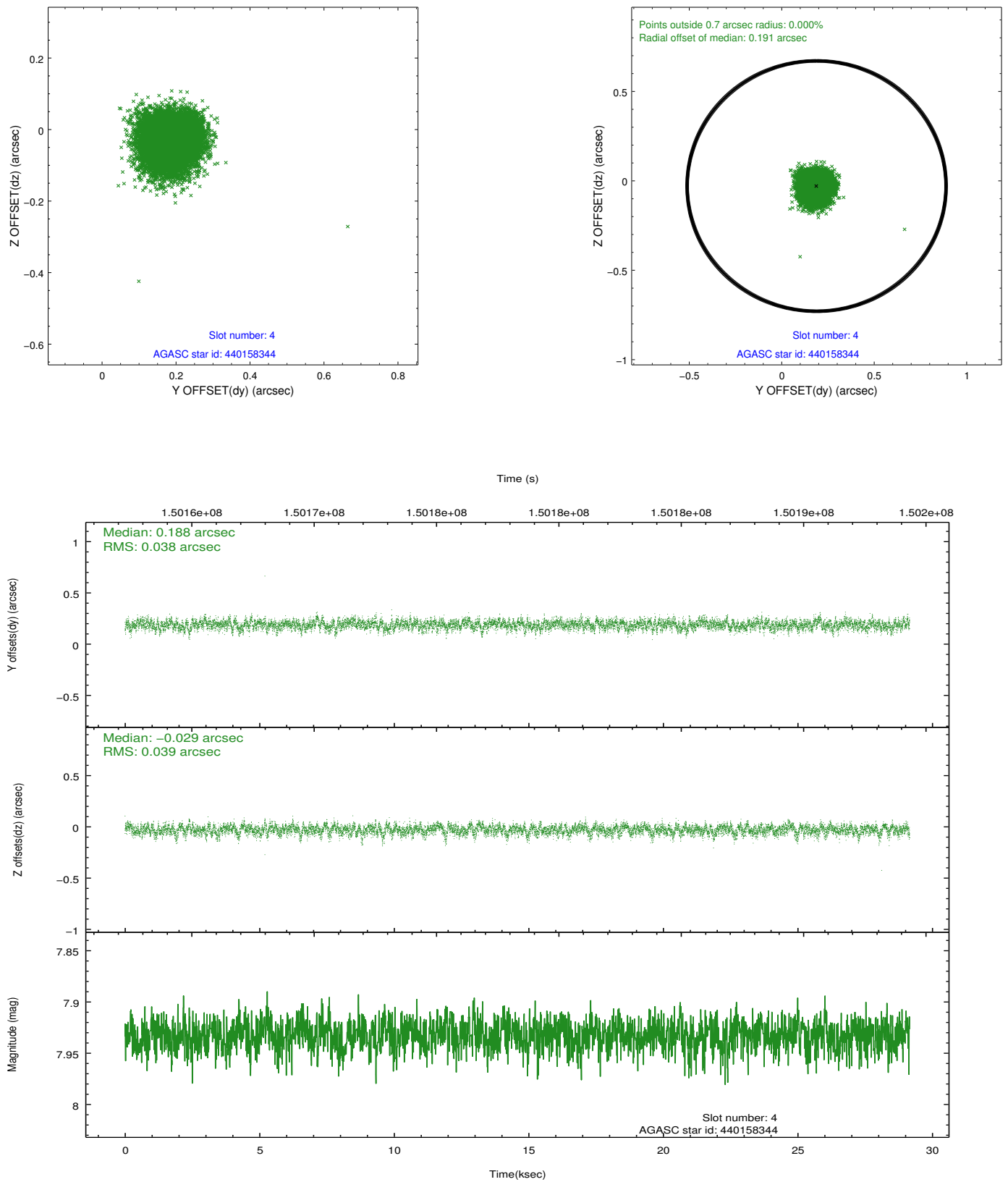
slot	status	id	mag	n_pts	med_dy	med_dz	dr1	dr2	ra	dec	mean_y	mean_z
0	FID	HRC-S-1	7.01	7110	0.113	-0.099	0.021	0.045	0.000000	0.000000	-1157.56	-456.06
1	FID	HRC-S-3	7.03	7113	0.105	-0.103	0.036	0.053	0.000000	0.000000	-1160.46	573.40
2	FID	HRC-S-4	6.97	7112	0.159	-0.093	0.019	0.048	0.000000	0.000000	1240.58	576.14
3	GUIDE	440159088	6.82	14225	-0.036	0.170	0.051	0.082	79.453034	46.128063	296.03	-716.66
4	GUIDE	440158344	7.93	14225	0.188	-0.029	0.057	0.094	79.344888	45.394991	-2230.46	92.36
5	GUIDE	440149808	8.44	14226	-0.027	-0.019	0.061	0.100	78.873930	46.405955	1575.21	483.65
6	GUIDE	438437960	8.52	14224	-0.038	-0.090	0.064	0.101	78.069023	46.438843	2125.40	2407.74
7	GUIDE	438450792	8.81	14215	-0.085	-0.030	0.069	0.112	78.654240	46.382628	1609.65	1034.63

## 2.4 Star Slots

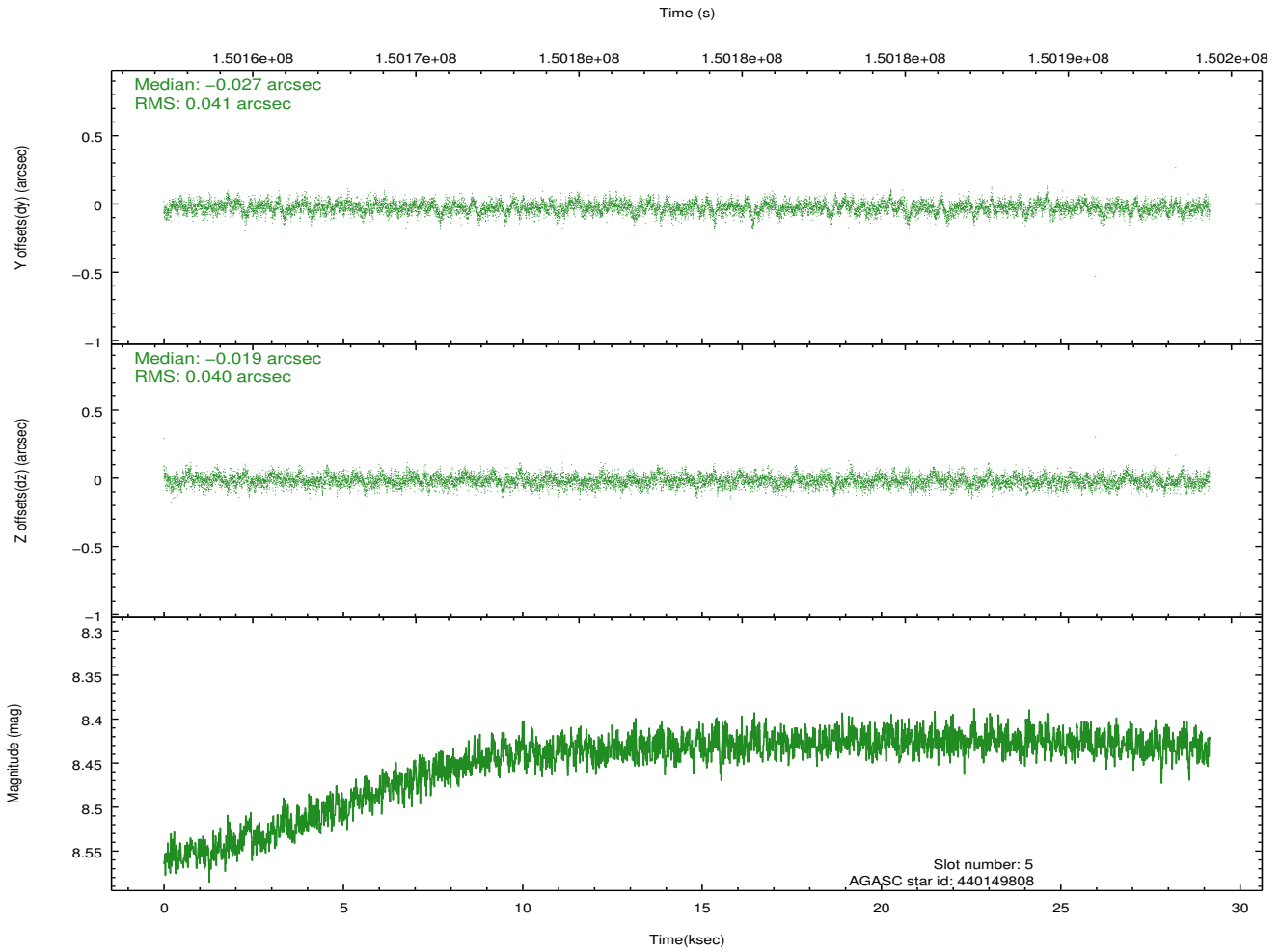
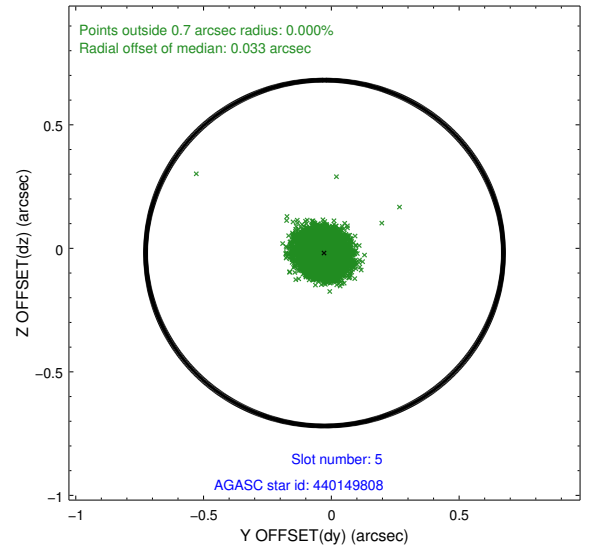
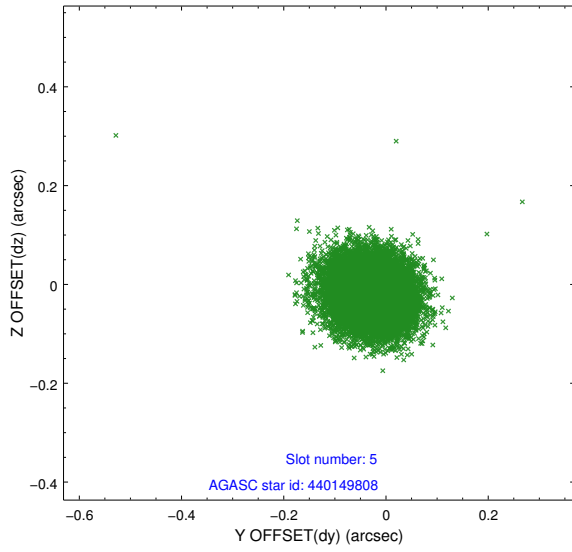
### 2.4.1 Slot 3



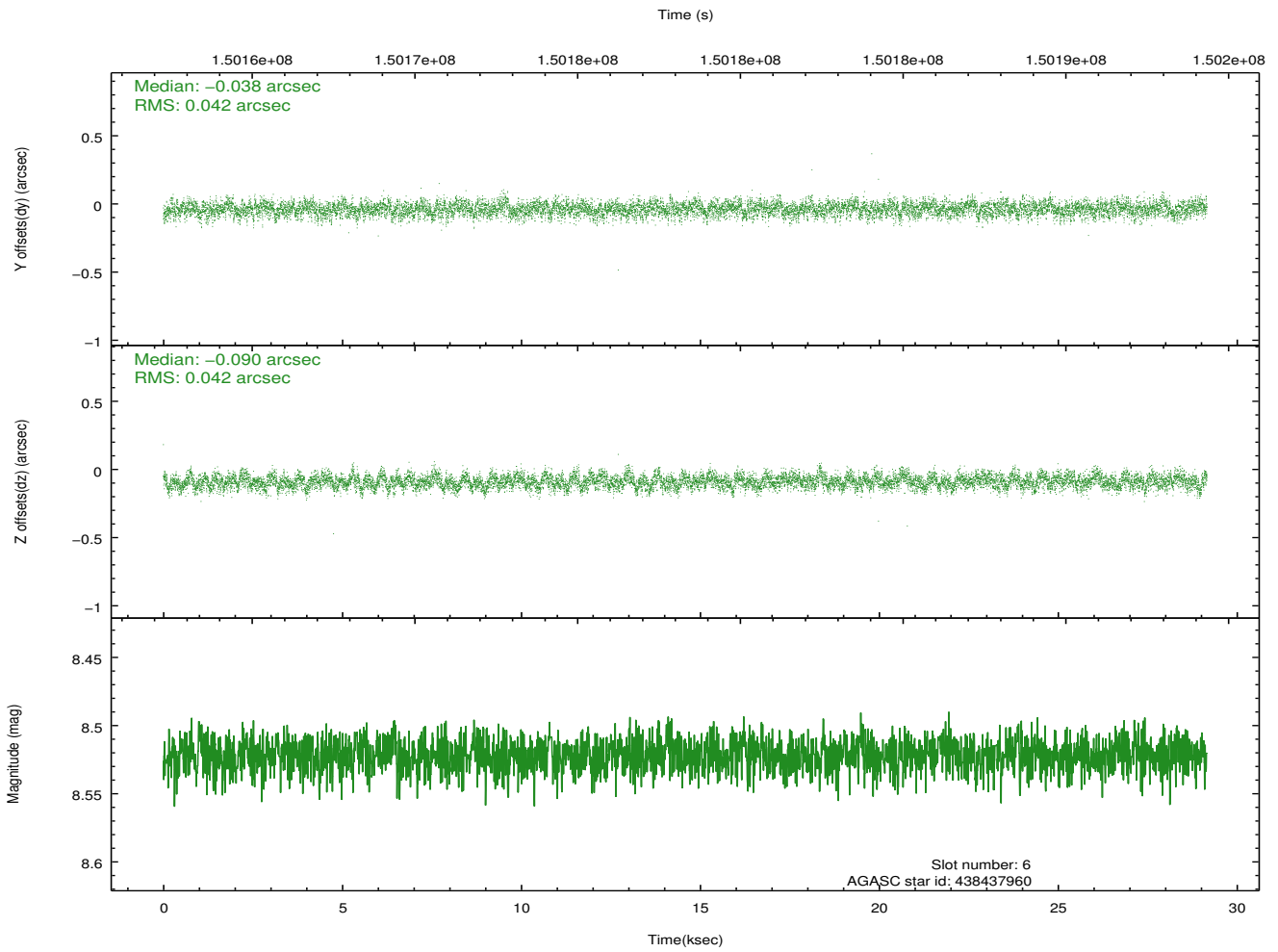
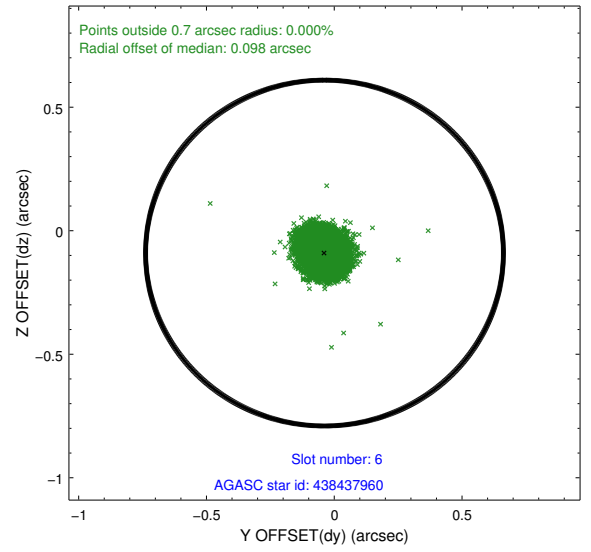
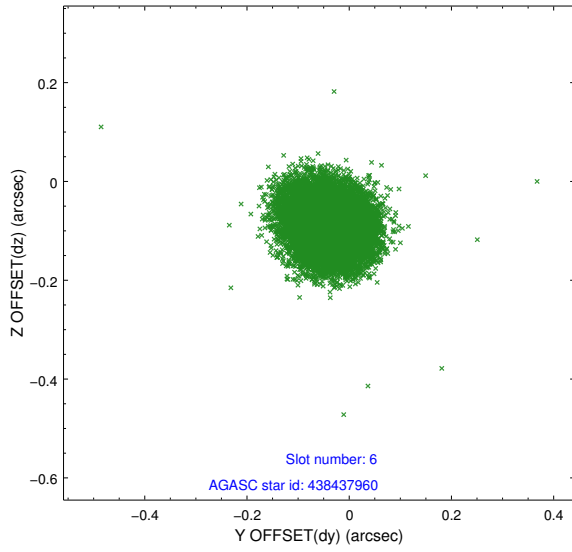
## 2.4.2 Slot 4



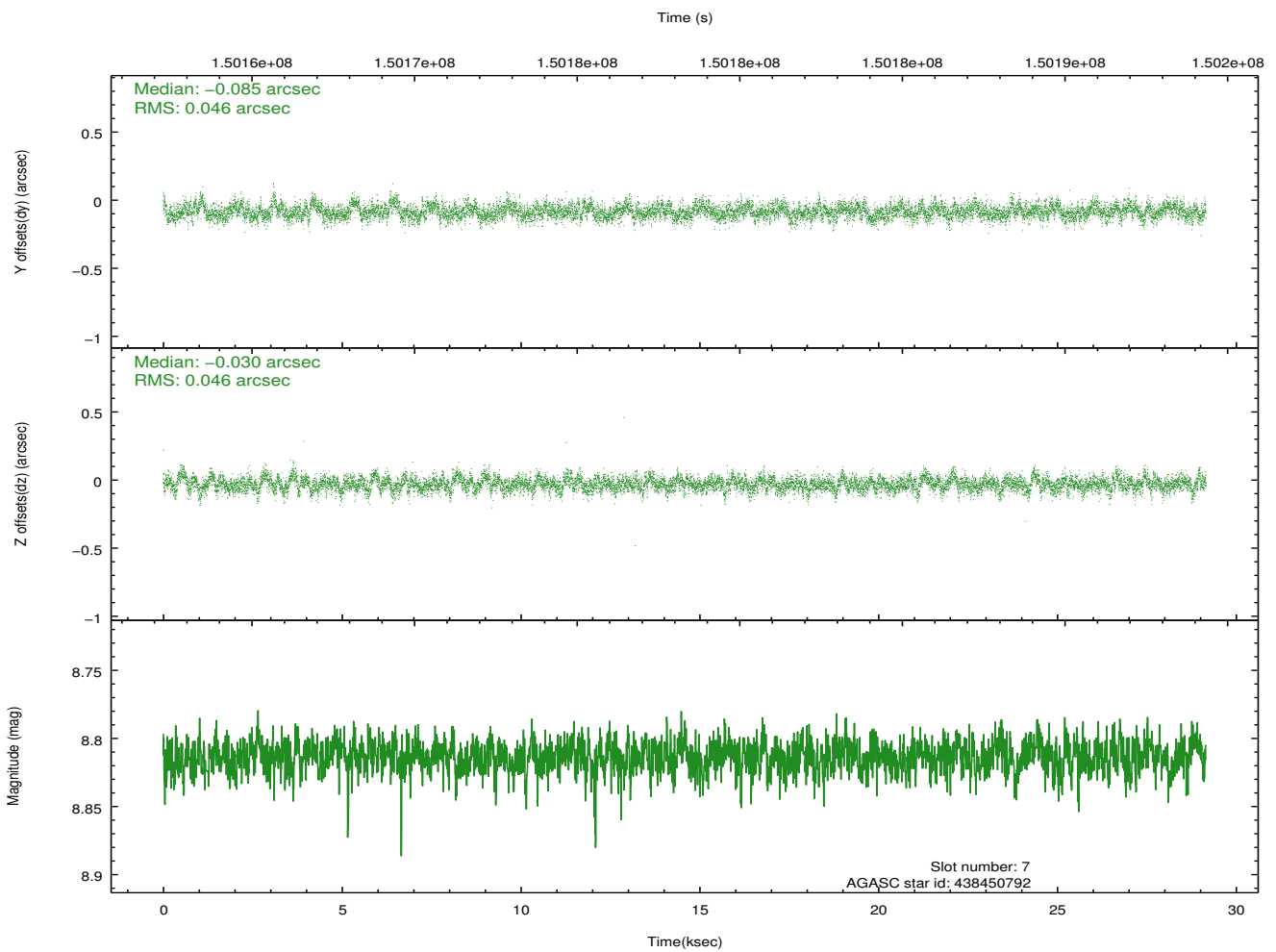
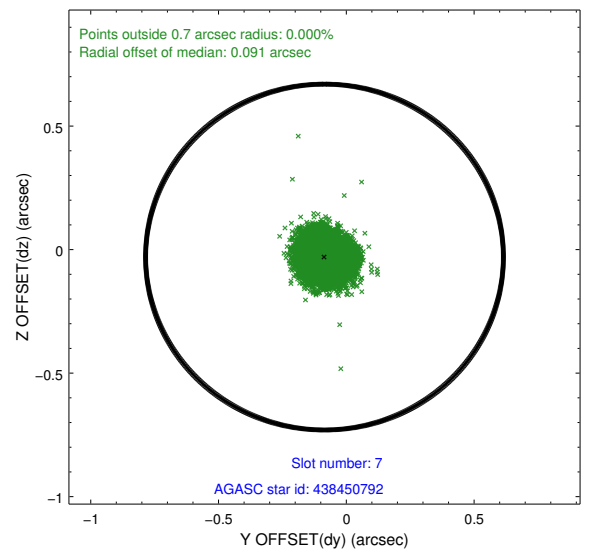
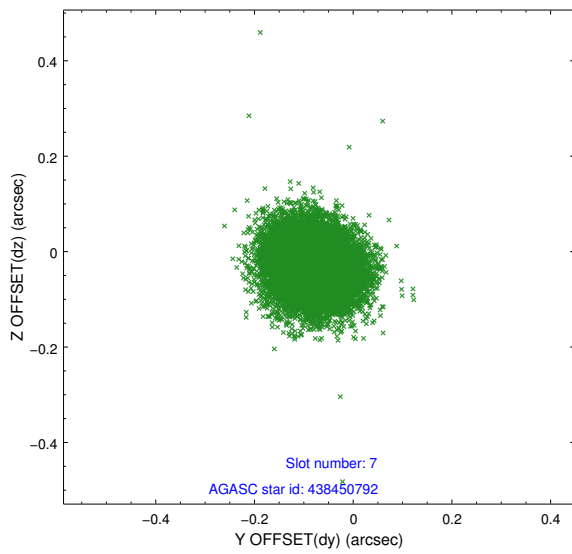
### 2.4.3 Slot 5



## 2.4.4 Slot 6

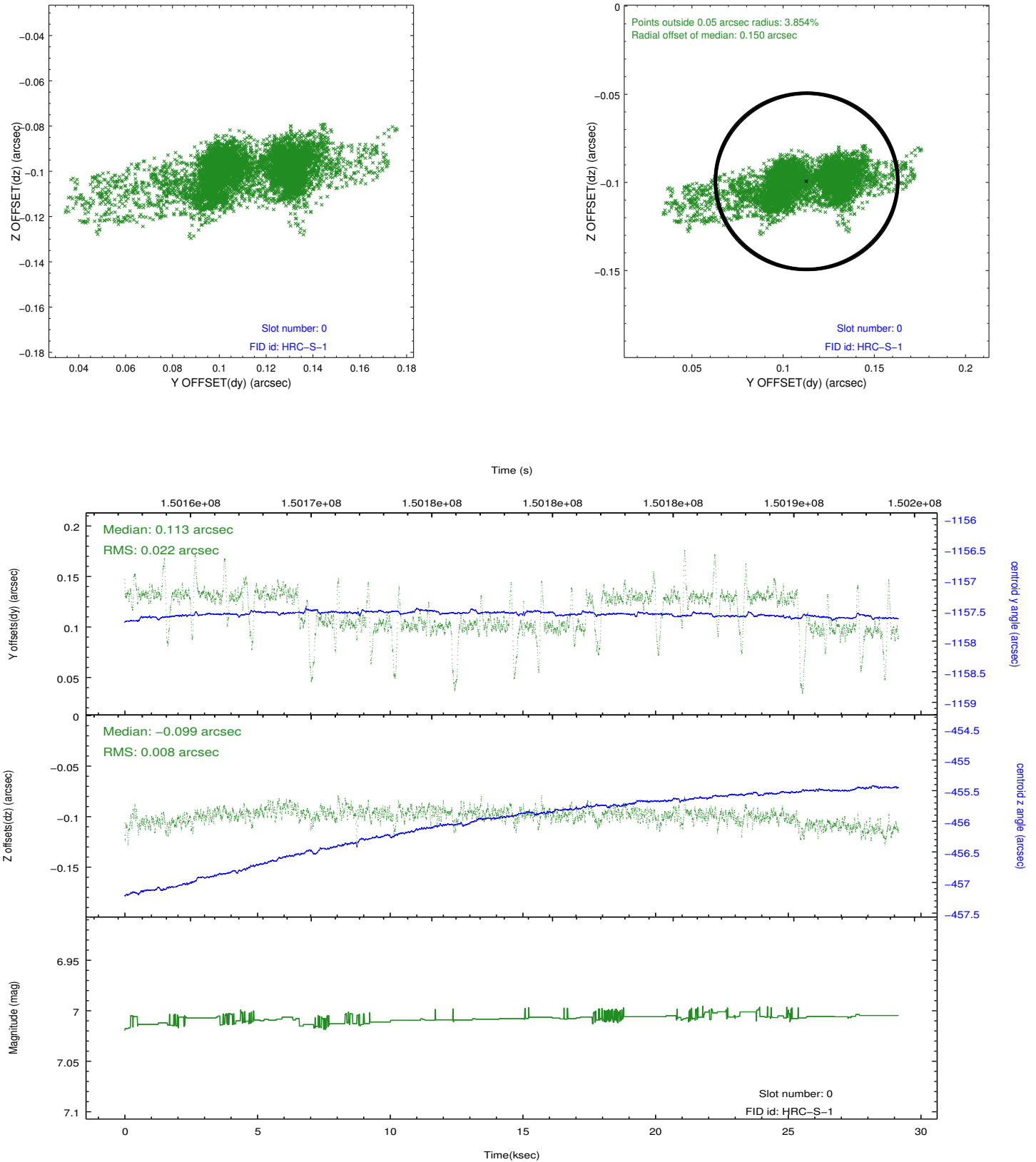


## 2.4.5 Slot 7

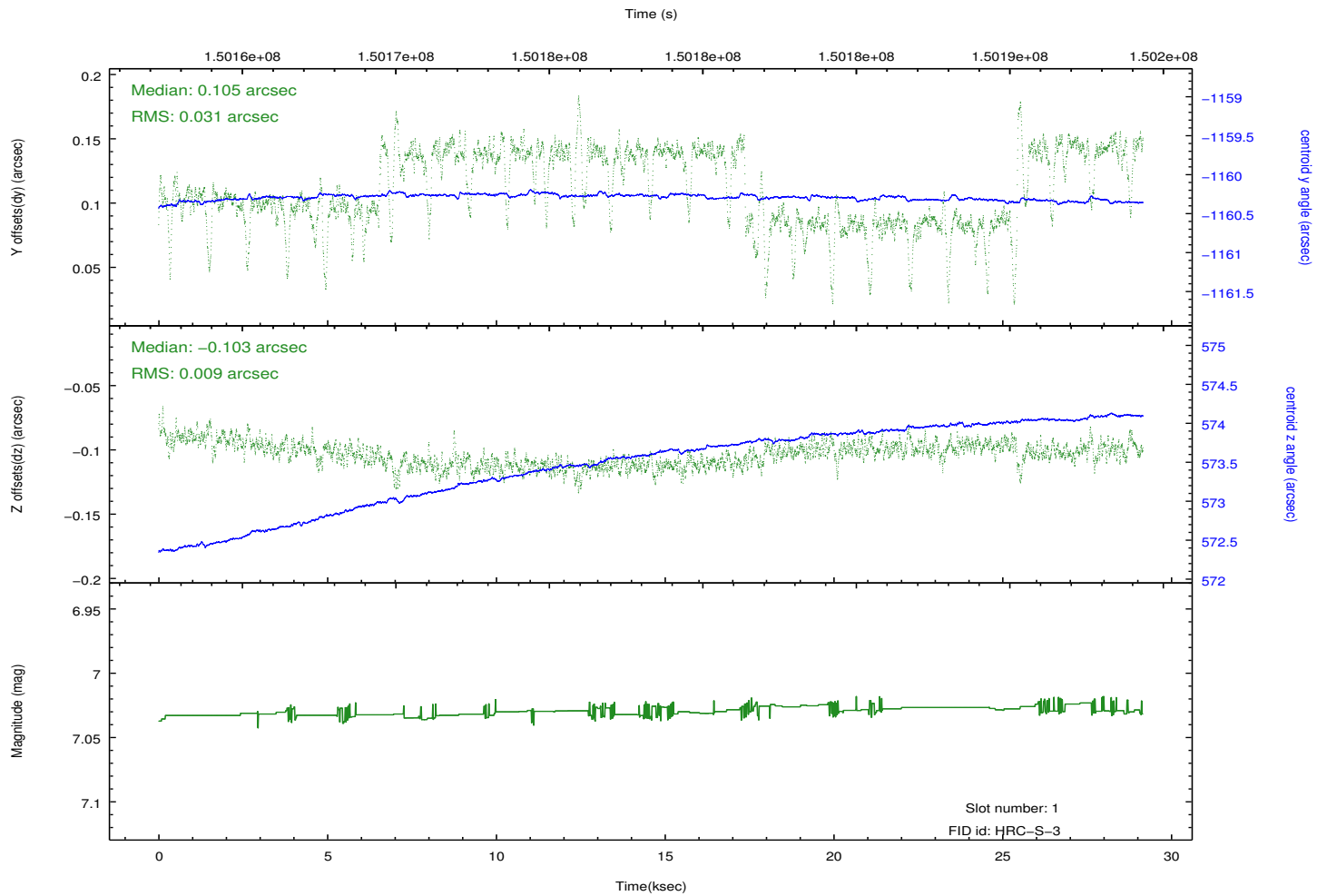
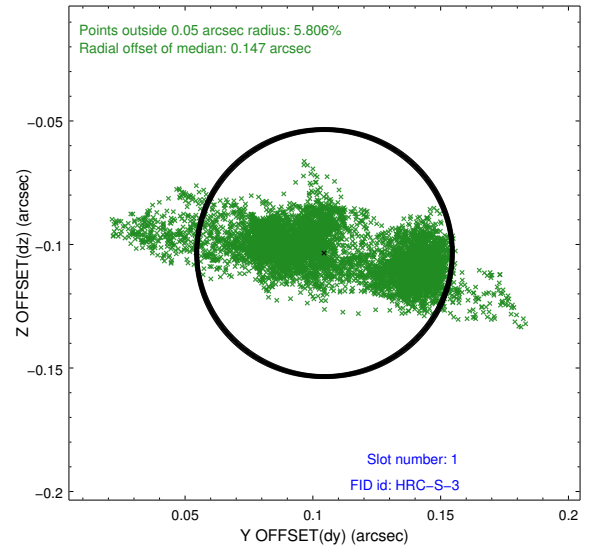
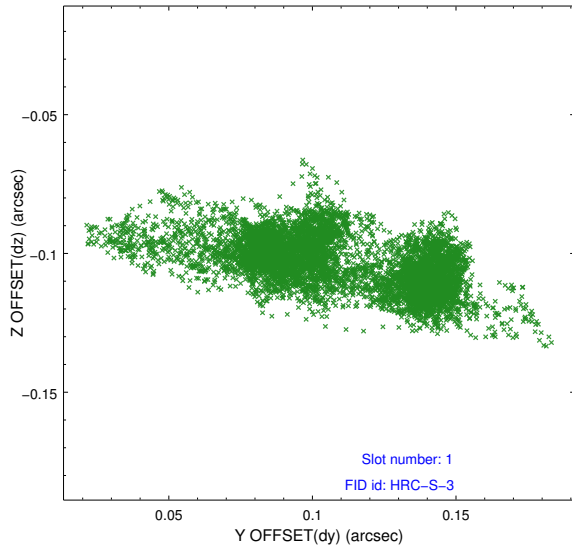


## 2.5 FID Slots

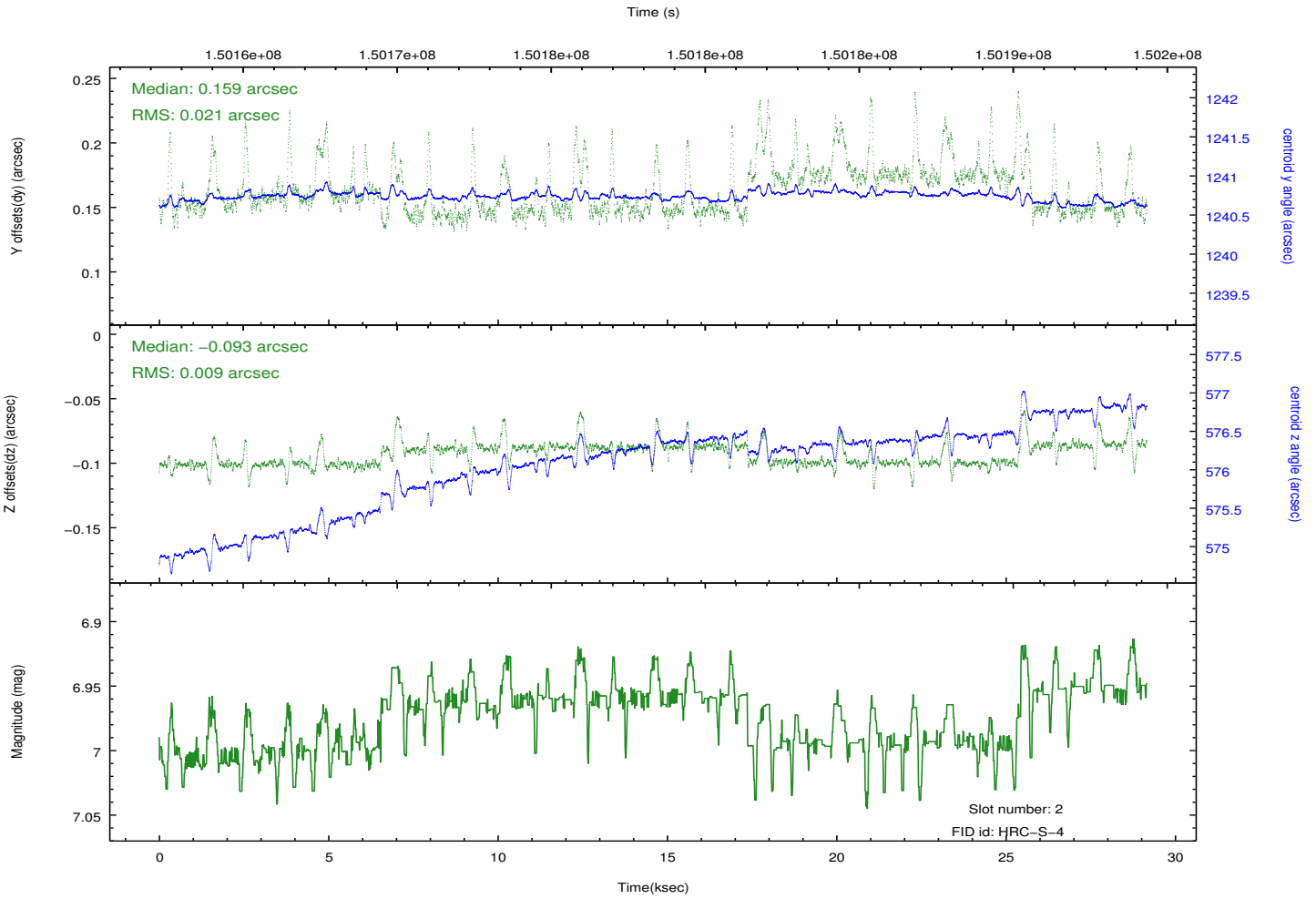
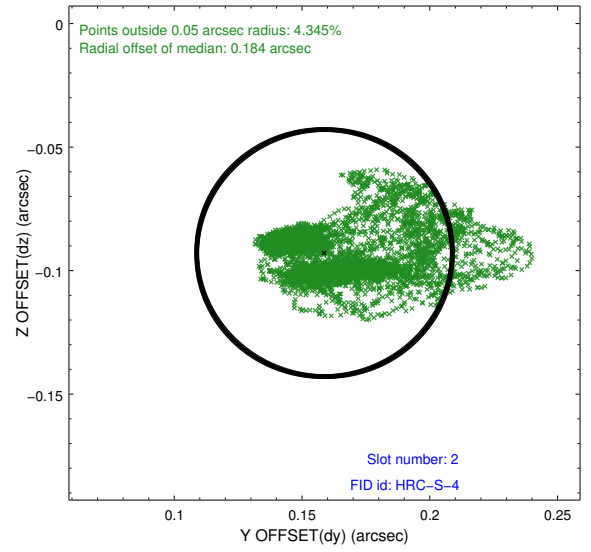
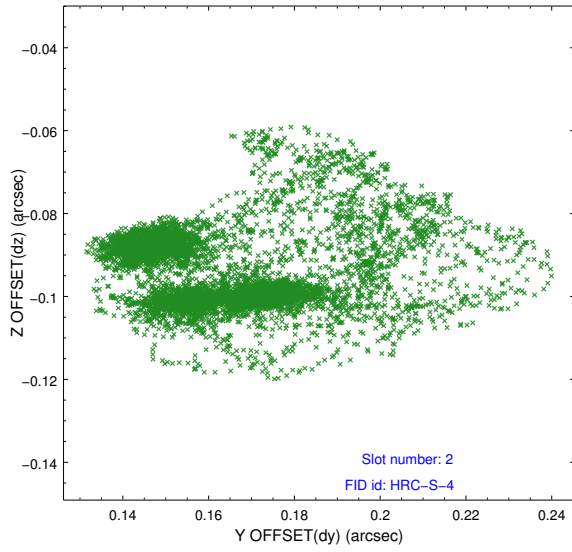
### 2.5.1 Slot 0



## 2.5.2 Slot 1

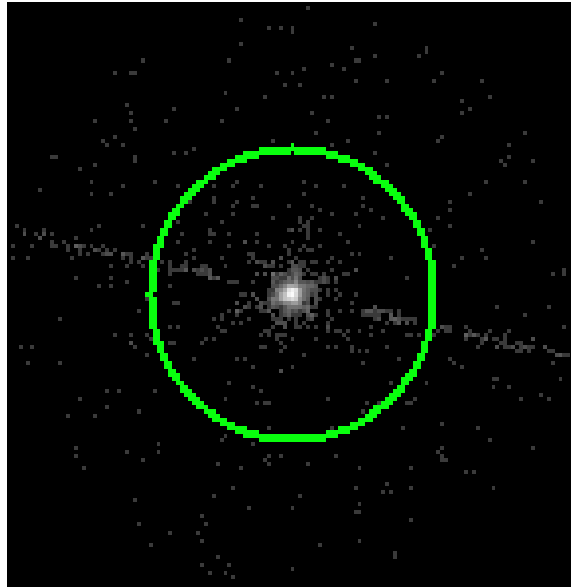


### 2.5.3 Slot 2

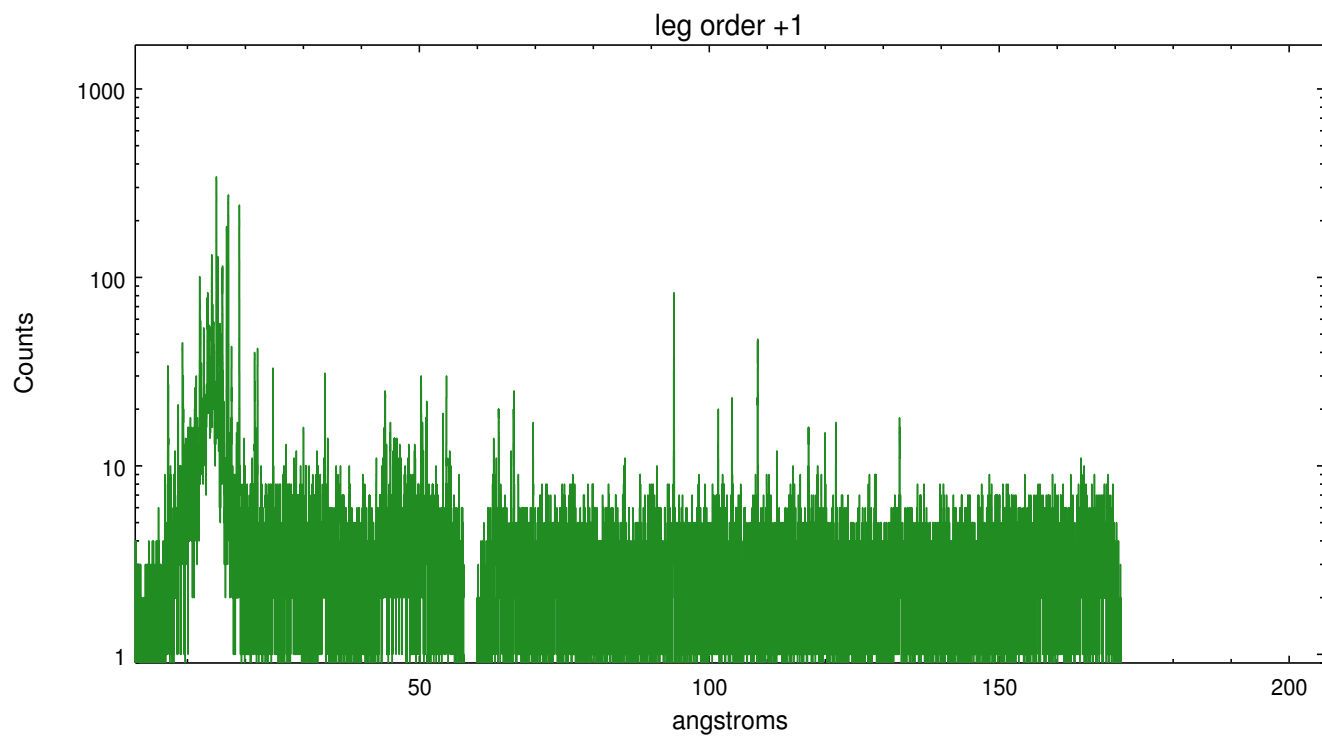
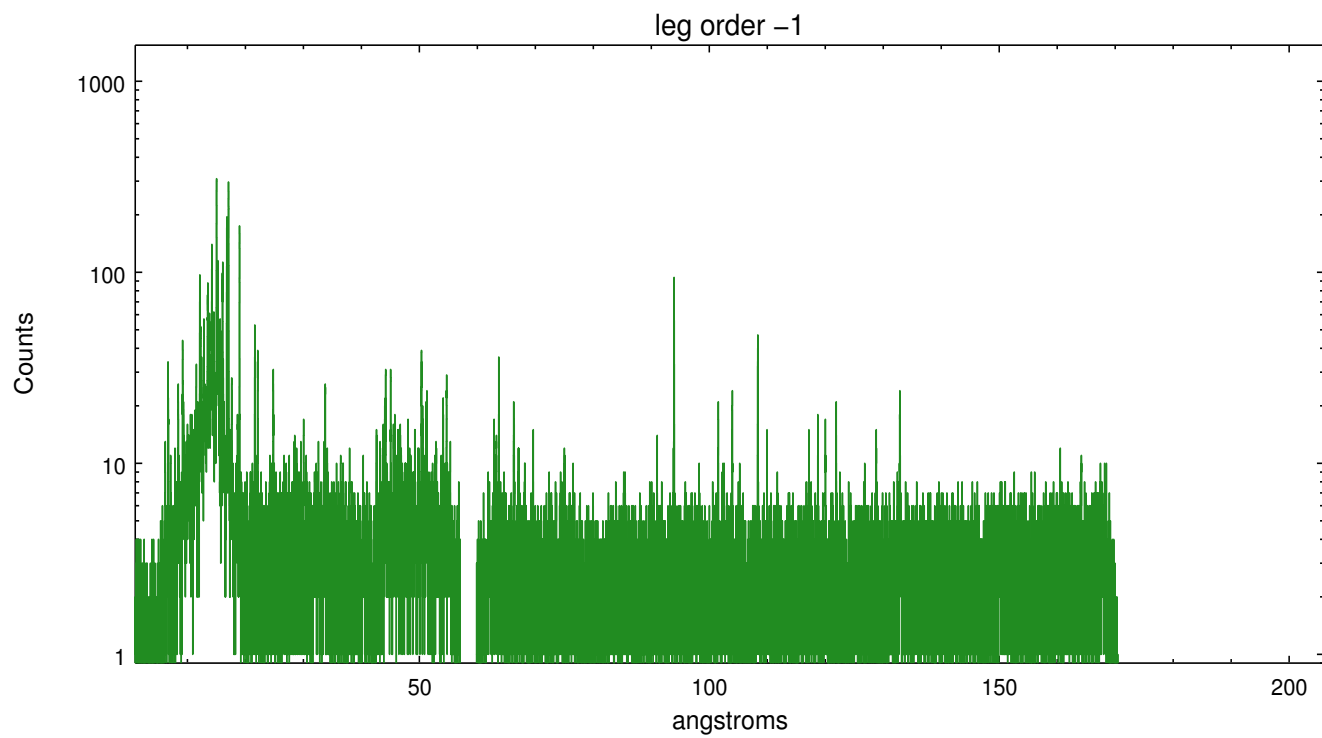


## 3 Gratings

### 3.1 LETG Arm



LETG Zero Order



# A Summary

## A.1 Status

V&V Scientist	Joy Nichols
V&V Date (YYYY-MM-DD)	2012.10.19
V&V Edition	1
V&V Disposition and Status	OK
V&V Charge Time	28.832

## A.2 Comments