

V&V Reference Report

L2 ASCDS Version : 8.4.5

Observation 2802 - L2 Version 3
Chandra X-Ray Center

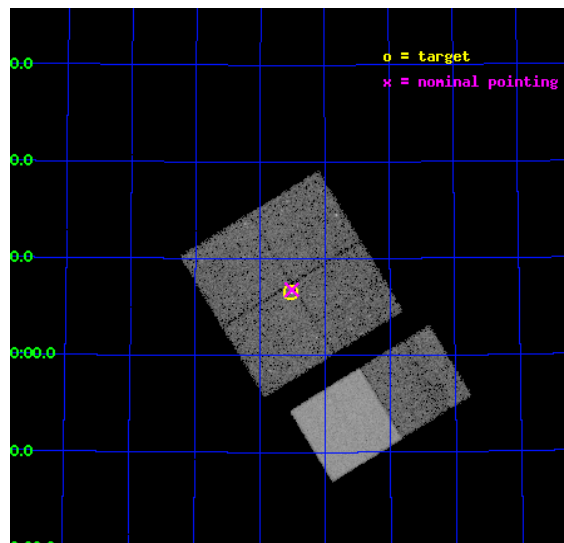
L2 Processing Date : Oct 15 2012

Contents

1	Front	2
2	OBI	3
2.1	OBI	3
2.1.1	Images	3
2.1.2	Bias	3
2.1.3	Parameters	4
2.1.4	Events	4
2.2	Compared Parameters	5
2.3	Aspect	6
2.4	Star Slots	9
2.4.1	Slot 3	9
2.4.2	Slot 4	10
2.4.3	Slot 5	11
2.4.4	Slot 6	12
2.4.5	Slot 7	13
2.5	FID Slots	14
2.5.1	Slot 0	14
2.5.2	Slot 1	15
2.5.3	Slot 2	16
A	Summary	17
A.1	Status	17
A.2	Comments	17

1 Front

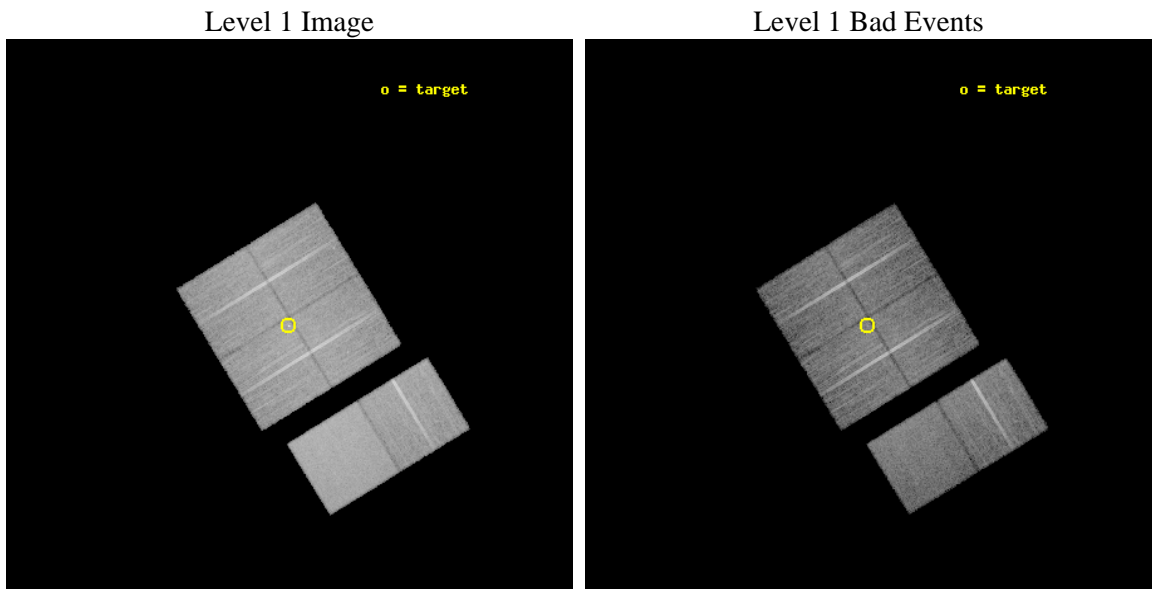
seq_num	500252	Sequence number
obs_id	2802	Observation id
title	A CHANDRA SURVEY FOR COMPACT OBJECTS IN SUPERNOVA REMNANTS	Proposa
observer	Prof. Shrinivas Kulkarni	Principal investigator
object	G127.1+0.5	Source name
dtcycle	0	
cycle	P	events from which exps? Prim/Second/Both
ra_targ	22.133333	Observer's specified target RA [deg]
dec_targ	63.109444	Observer's specified target Dec [deg]
ra_nom	22.127344006067	Nominal RA [deg]
dec_nom	63.113245528416	Nominal Dec [deg]
roll_nom	148.55102348189	Nominal Roll [deg]
revision	3	Processing version of data
ontime	19753.599926412	Sum of GTIs [s]
livetime	19503.467949954	Livetime [s]
ontime0	19753.599926412	Sum of GTIs [s]
ontime1	19753.599926412	Sum of GTIs [s]
ontime2	19753.599926412	Sum of GTIs [s]
ontime3	19753.599926412	Sum of GTIs [s]
ontime6	19747.118035734	Sum of GTIs [s]
ontime7	19753.599926412	Sum of GTIs [s]
l2events	133964	Number of level 2 events



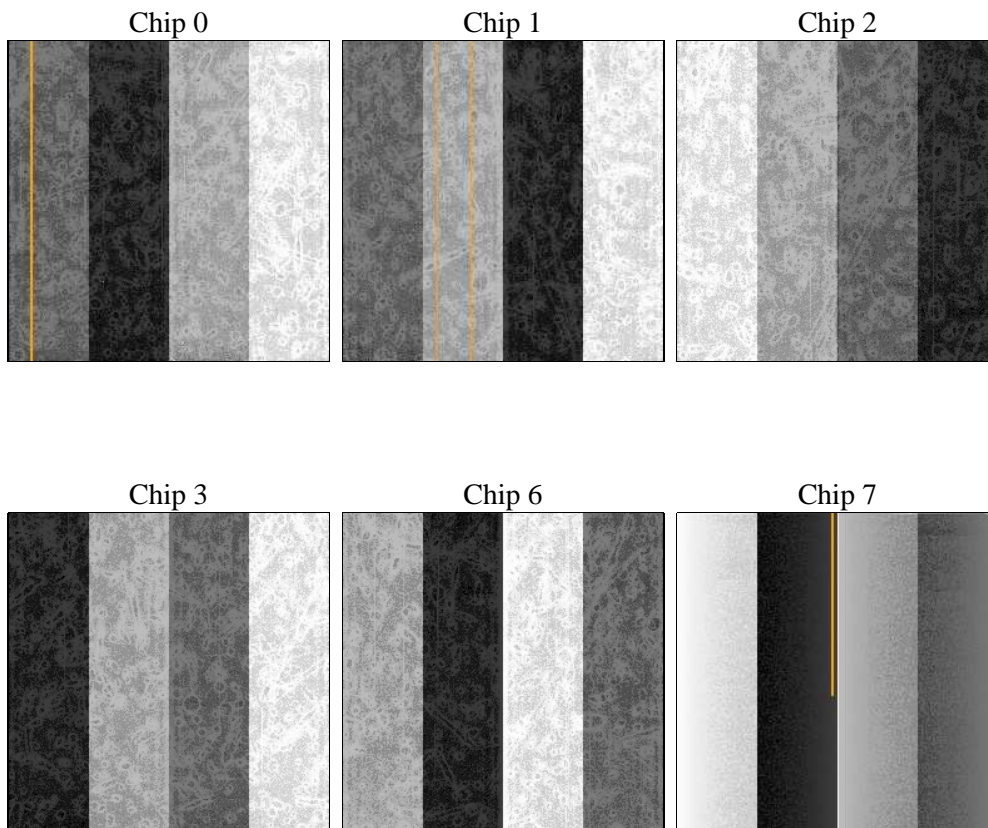
2 OBI

2.1 OBI

2.1.1 Images



2.1.2 Bias



2.1.3 Parameters

obi_num	1	Obi number	sched_exp_time	20000.000000	[s] Scheduled observation exposure time
ascdsver	8.4.5	Processing system revision	ontime	19753.599926412	Sum of GTIs [s]
caldbver	4.5.2	 	ontime0	19753.599926412	Sum of GTIs [s]
date	2012-10-14T18:21:38	Date and time of file creation	ontime1	19753.599926412	Sum of GTIs [s]
revision	3	Processing version of data	ontime2	19753.599926412	Sum of GTIs [s]
			ontime3	19753.599926412	Sum of GTIs [s]
			ontime6	19747.118035734	Sum of GTIs [s]
			ontime7	19753.599926412	Sum of GTIs [s]
			l1events	780007	Number of level 1 events

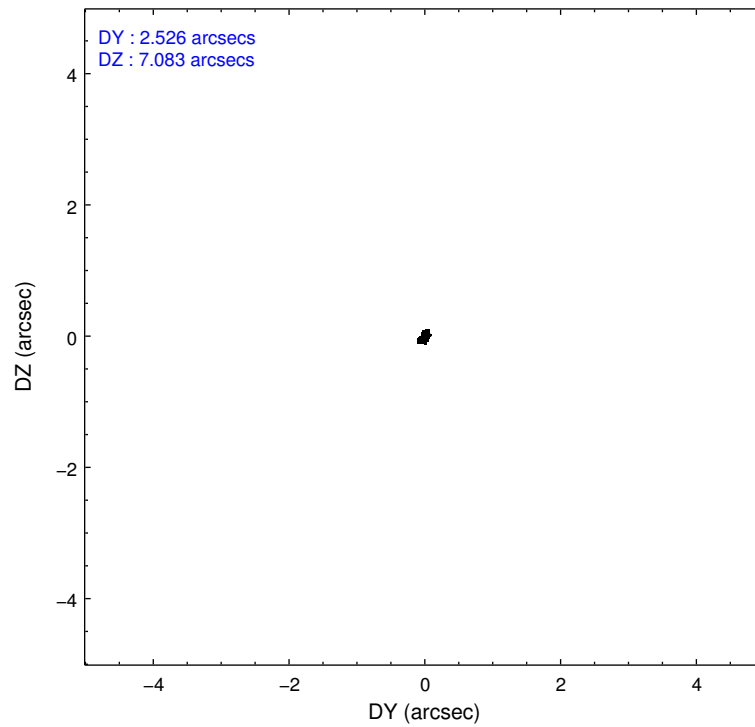
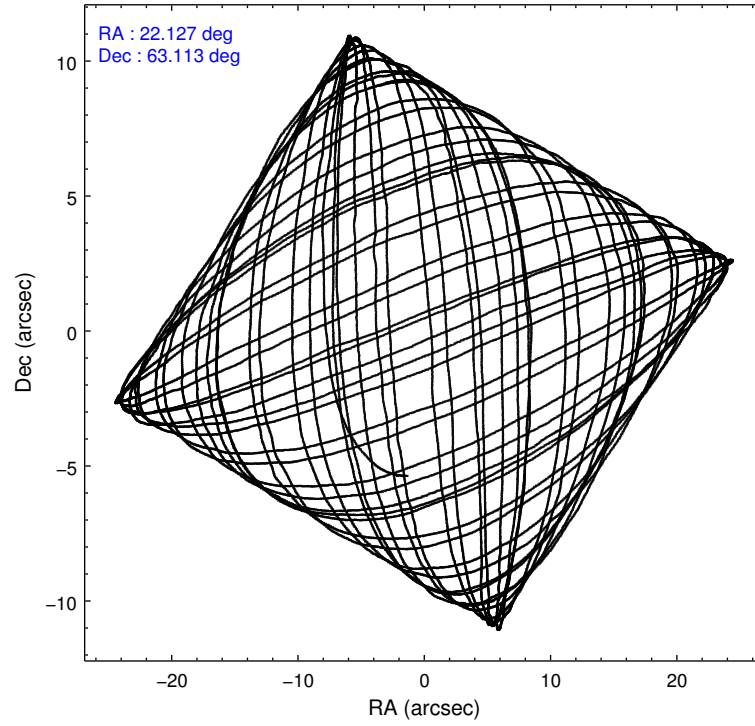
2.1.4 Events

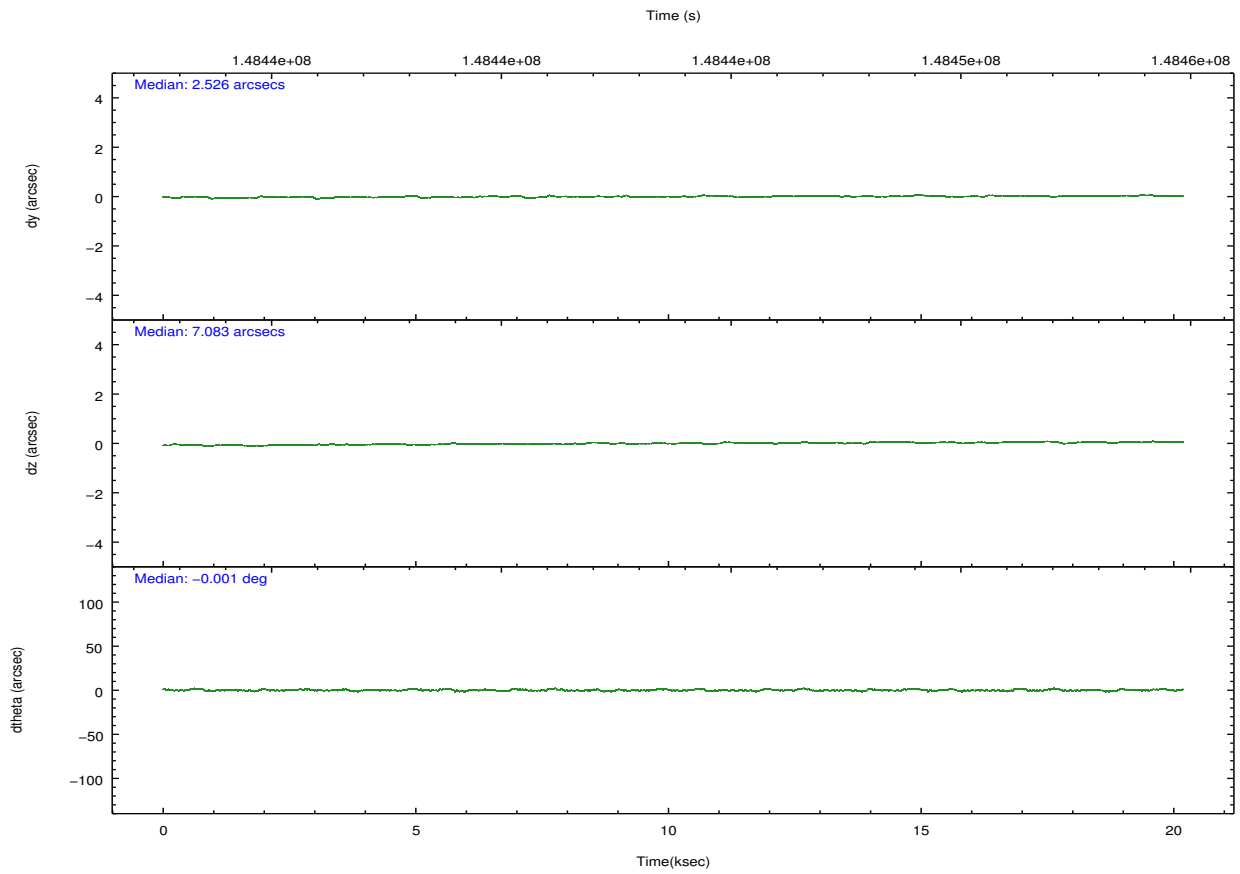
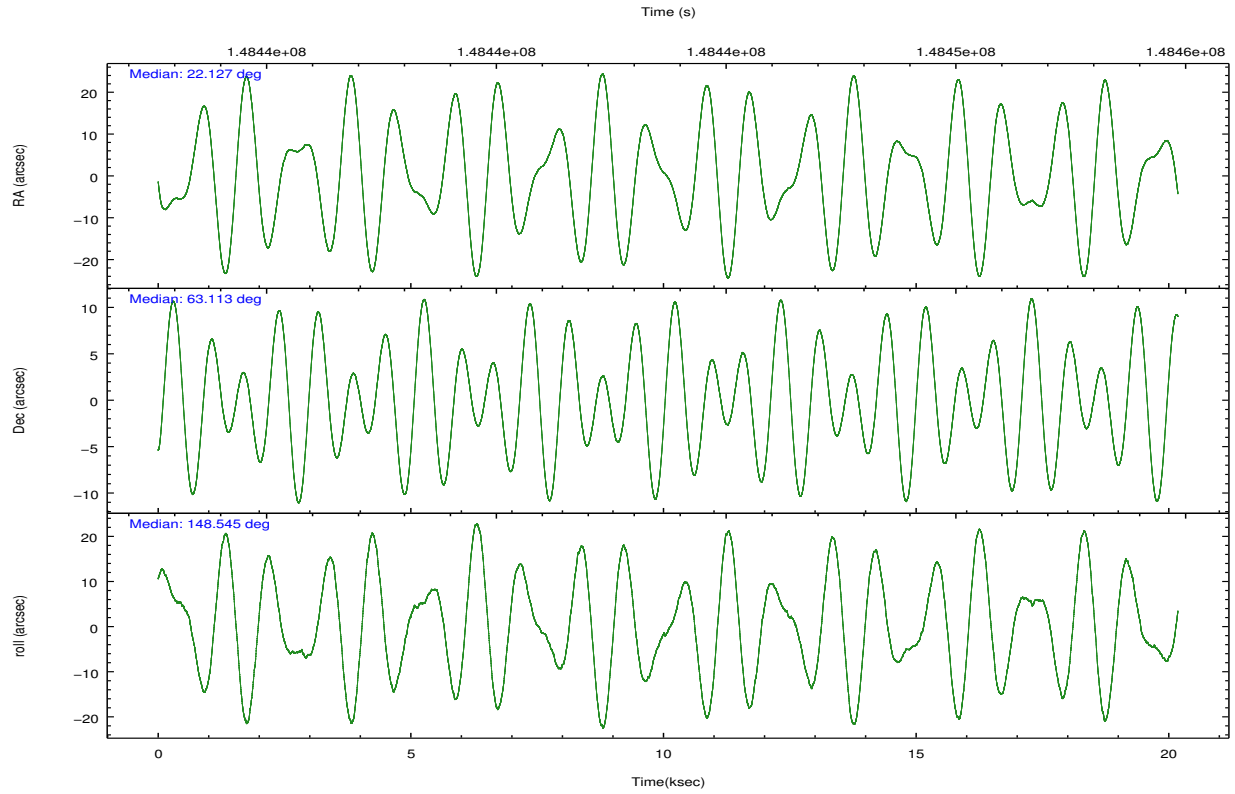
	ccd 0	ccd 1	ccd 2	ccd 3	ccd 6	ccd 7		ccd 0	ccd 1	ccd 2	ccd 3	ccd 6	ccd 7
level 1 events	115465	115479	125177	128242	128340	167304	grade 0 events	7008	6905	6552	7389	5744	6257
rejected events	99724	99329	110615	112501	113723	98096		6%	5%	5%	5%	4%	3%
rejected %	86%	86%	88%	87%	88%	58%	grade 1 events	66	67	66	93	45	138
								0%	0%	0%	0%	0%	0%
							grade 2 events	3168	3236	2868	2961	2914	13506
								2%	2%	2%	2%	2%	8%
							grade 3 events	1536	1619	1426	1448	1509	6259
								1%	1%	1%	1%	1%	3%
							grade 4 events	1404	1474	1365	1450	1408	6066
								1%	1%	1%	1%	1%	3%
							grade 5 events	4913	5086	4651	5428	5599	15844
								4%	4%	3%	4%	4%	9%
							grade 6 events	2633	2917	2355	2500	3045	37154
								2%	2%	1%	1%	2%	22%
							grade 7 events	94737	94175	105894	106973	108076	82080
								82%	81%	84%	83%	84%	49%

2.2 Compared Parameters

Parameter	Planned	Actual	Parameter	Planned	Actual
Instrument	ACIS	ACIS	Obspar format version number	7	7
Detector	ACIS-012367	ACIS-012367	Obspar file type	PREDICTED	ACTUAL
Grating	NONE	NONE	Obspar update status	NONE	UPDATED
Data mode	FAINT	FAINT	Number of optional ACIS chips dropped	0	0
Observation mode	POINTING	POINTING	On-chip summing requested	N	N
[deg] Pointing RA	22.187900	22.12734400606712	Subarray requested	NONE	NONE
[deg] Pointing Dec	63.112629	63.11324552841619	Alternating exposures requested	N	N
[deg] Pointing Roll	148.288332	148.551023481893	[s] Primary exposure time	0.000000	3.2
[mm] SIM focus pos	-0.782348	-0.7809083437167272			
[mm] SIM defocus	0	0.001439871863259334			
[mm] SIM translation stage pos	-233.592463	-233.5874344608287			
[mm] SIM translation stage offset	0	-0.005018542100998502			
[s] Observation start time (MET)	148433829.184000	148433249.44172			
Observation start date	2002-09-14T23:36:05	2002-09-14T23:27:29			
[s] Observation end time (MET)	148453829.184000	148454234.78009			
Observation end date	2002-09-15T05:09:25	2002-09-15T05:17:14			
Read mode	TIMED	TIMED			

2.3 Aspect



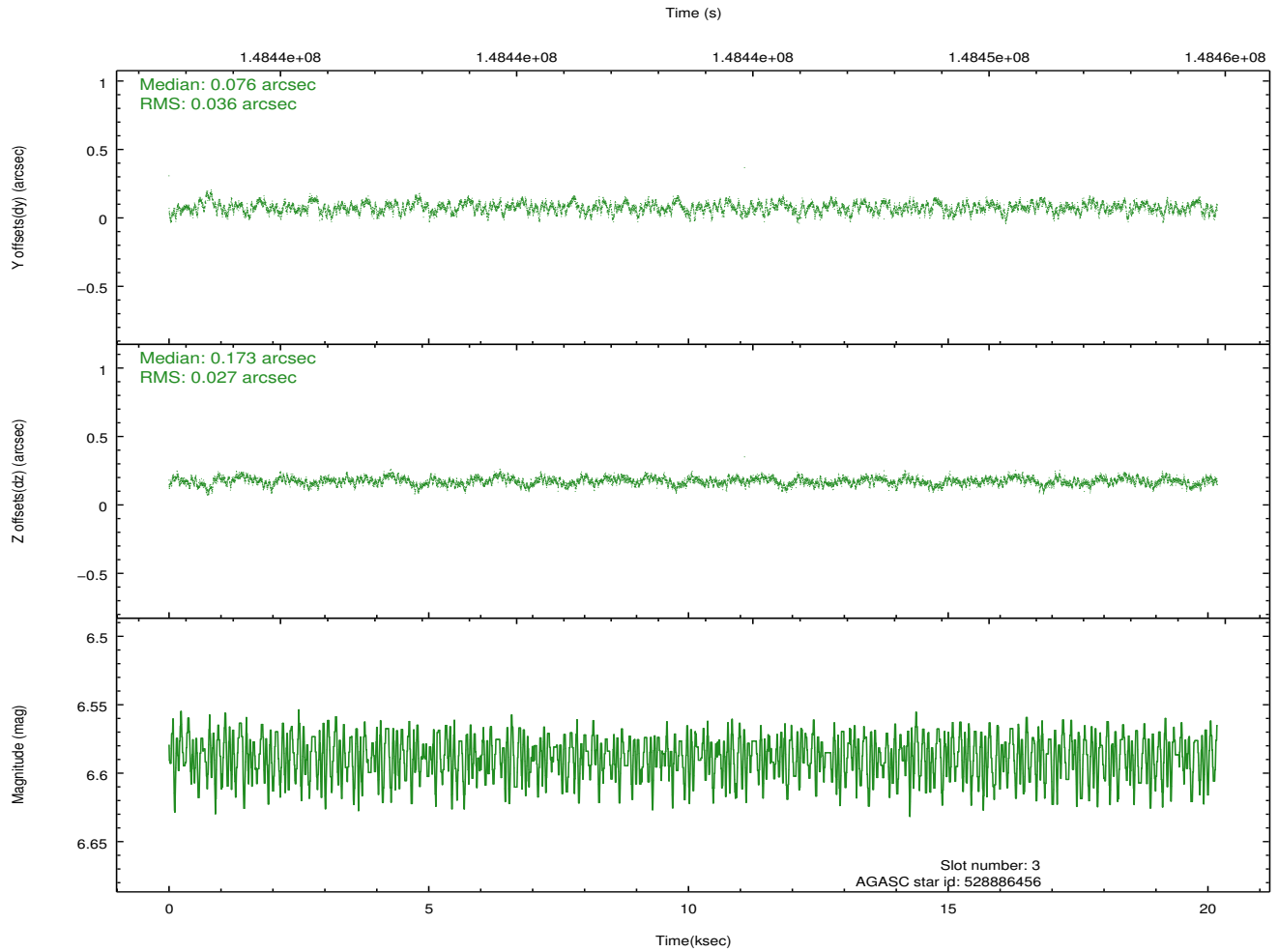
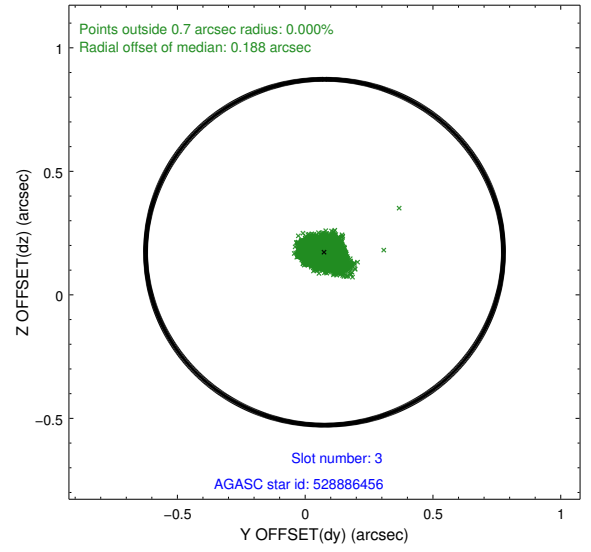
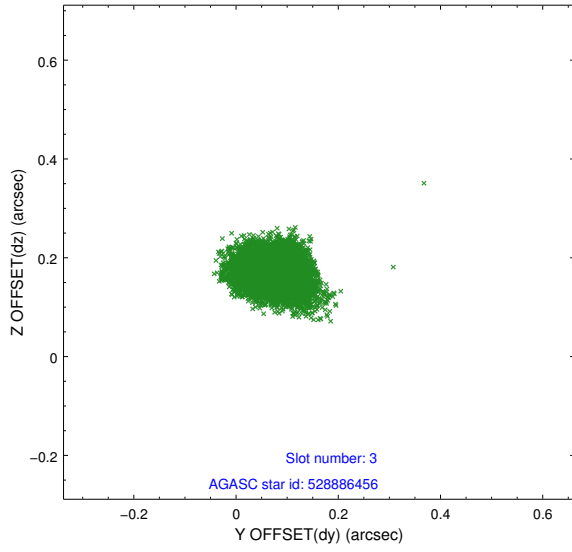


Slot Statistics

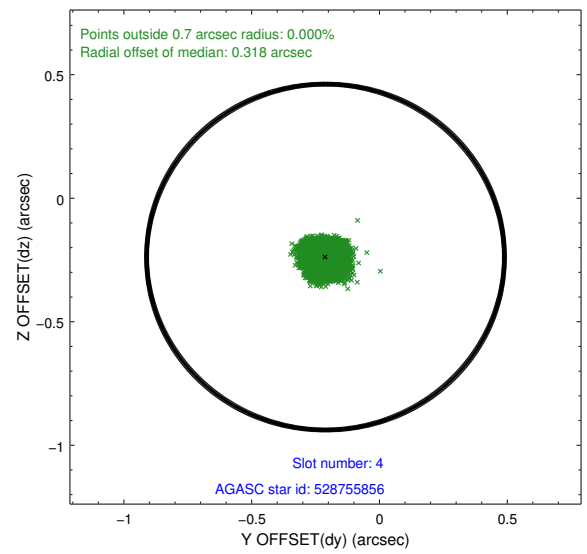
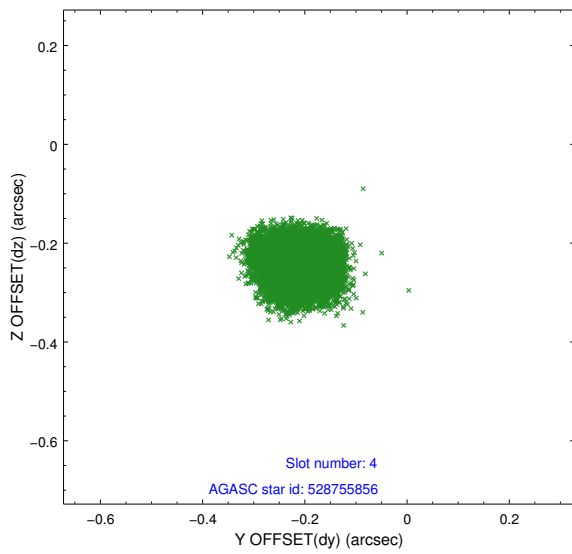
slot	status	id	mag	n_pts	med_dy	med_dz	dr1	dr2	ra	dec	mean_y	mean_z
0	FID	ACIS-I-1	7.24	4923	-0.002	0.020	0.011	0.020	0.000000	0.000000	937.26	-830.47
1	FID	ACIS-I-5	7.24	4923	-0.059	0.048	0.007	0.012	0.000000	0.000000	-1810.76	1067.01
2	FID	ACIS-I-6	7.26	4922	-0.030	0.002	0.010	0.018	0.000000	0.000000	402.63	1711.63
3	GUIDE	528886456	6.59	9846	0.076	0.173	0.048	0.079	23.851180	63.081968	-2345.42	-1360.14
4	GUIDE	528755856	7.60	9844	-0.211	-0.238	0.061	0.091	20.521674	62.806940	1771.10	2347.25
5	GUIDE	528876320	8.24	9844	-0.013	0.176	0.071	0.108	23.063220	63.620538	-224.72	-2298.50
6	GUIDE	528884976	8.98	9778	0.184	-0.245	0.089	0.142	22.498630	62.313582	-1953.95	2172.92
7	GUIDE	528746736	9.23	9842	-0.040	0.137	0.076	0.124	21.381992	63.593794	2011.97	-801.03

2.4 Star Slots

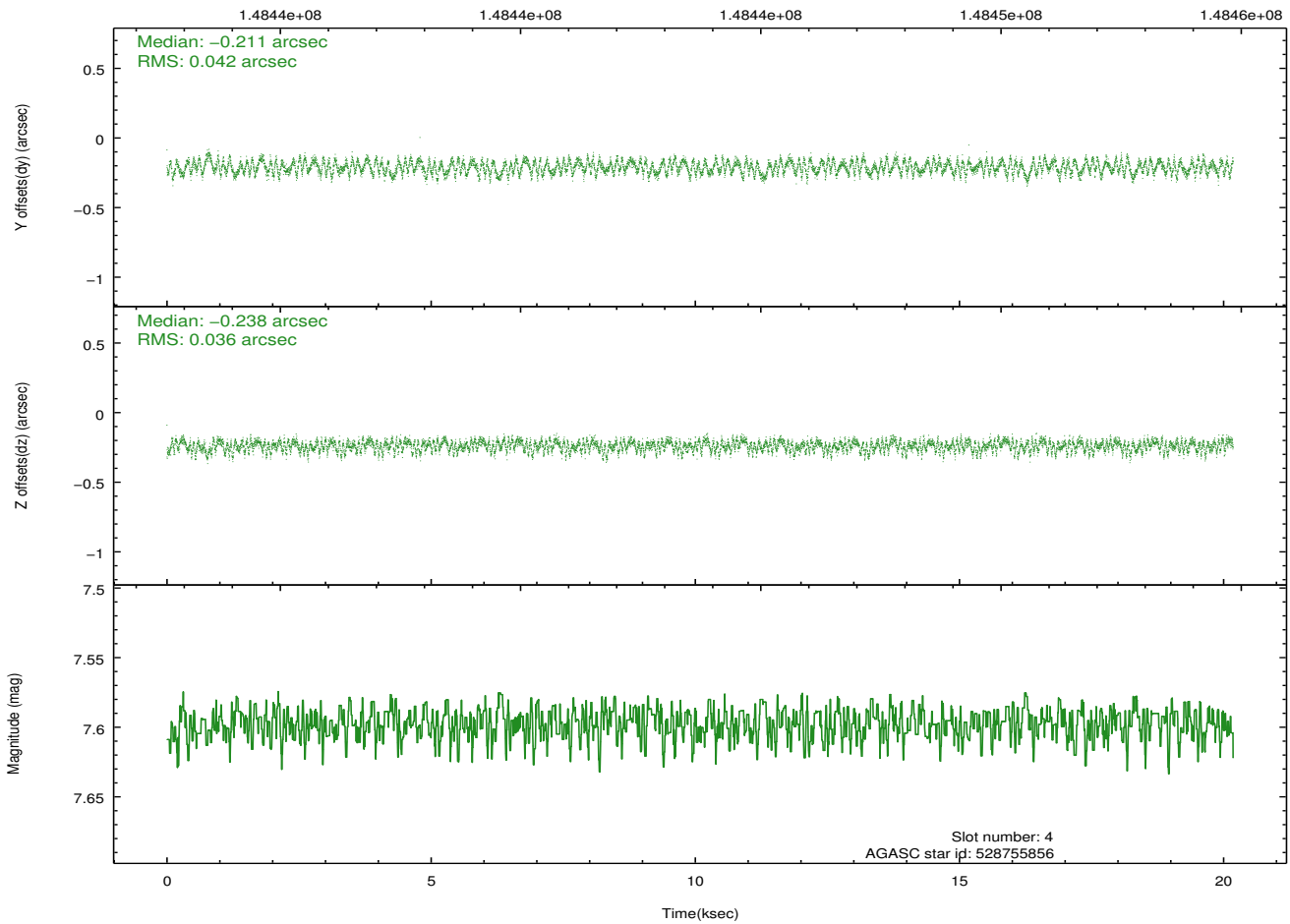
2.4.1 Slot 3



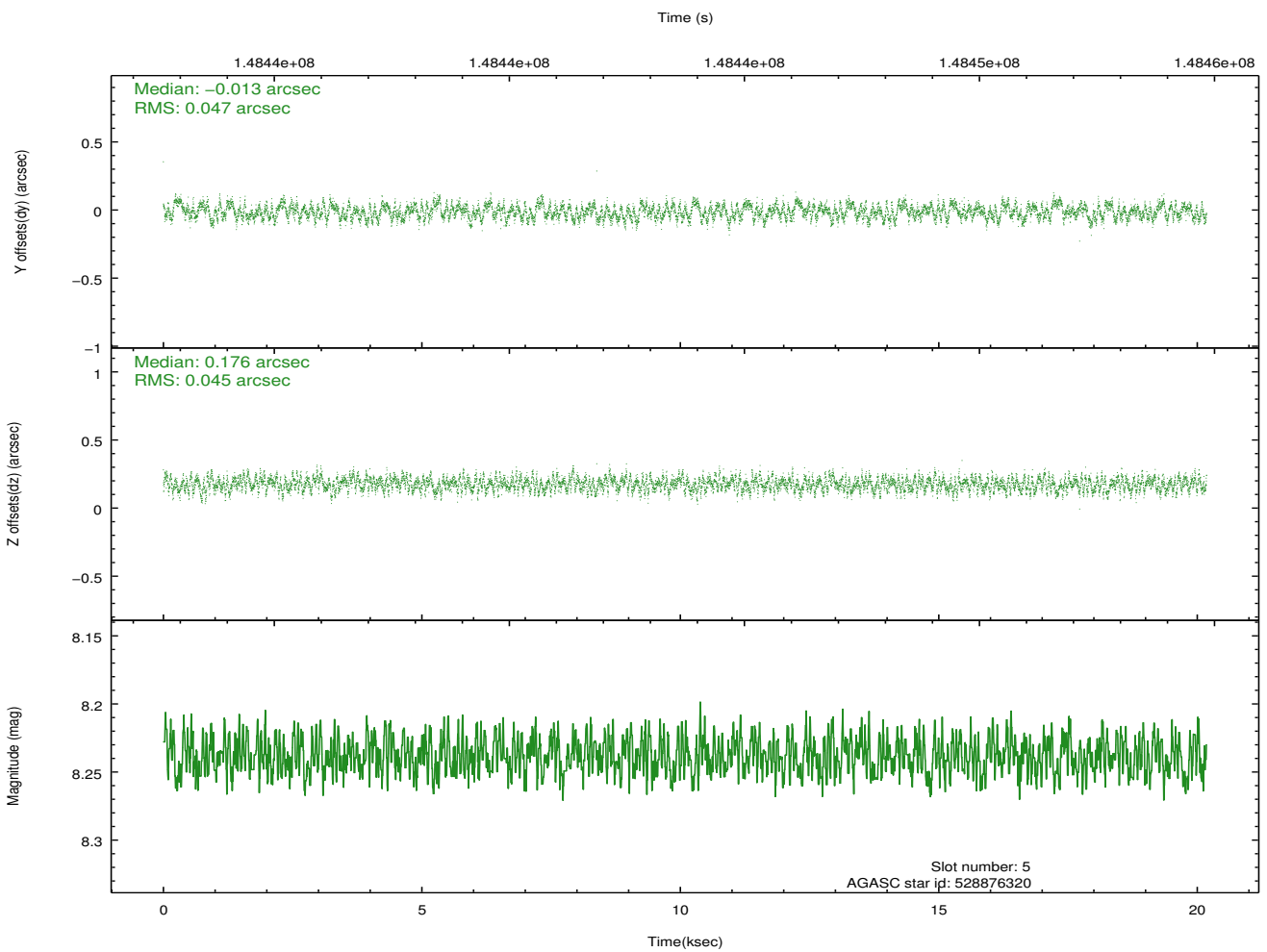
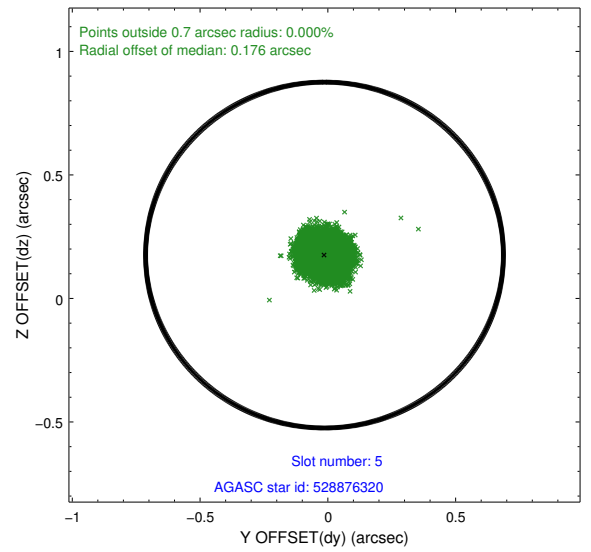
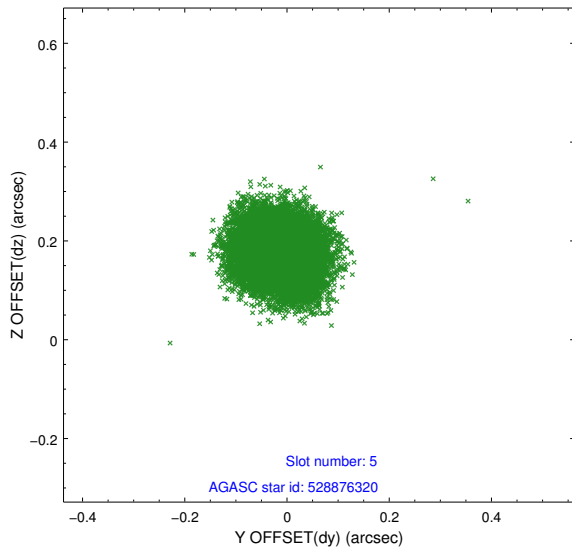
2.4.2 Slot 4



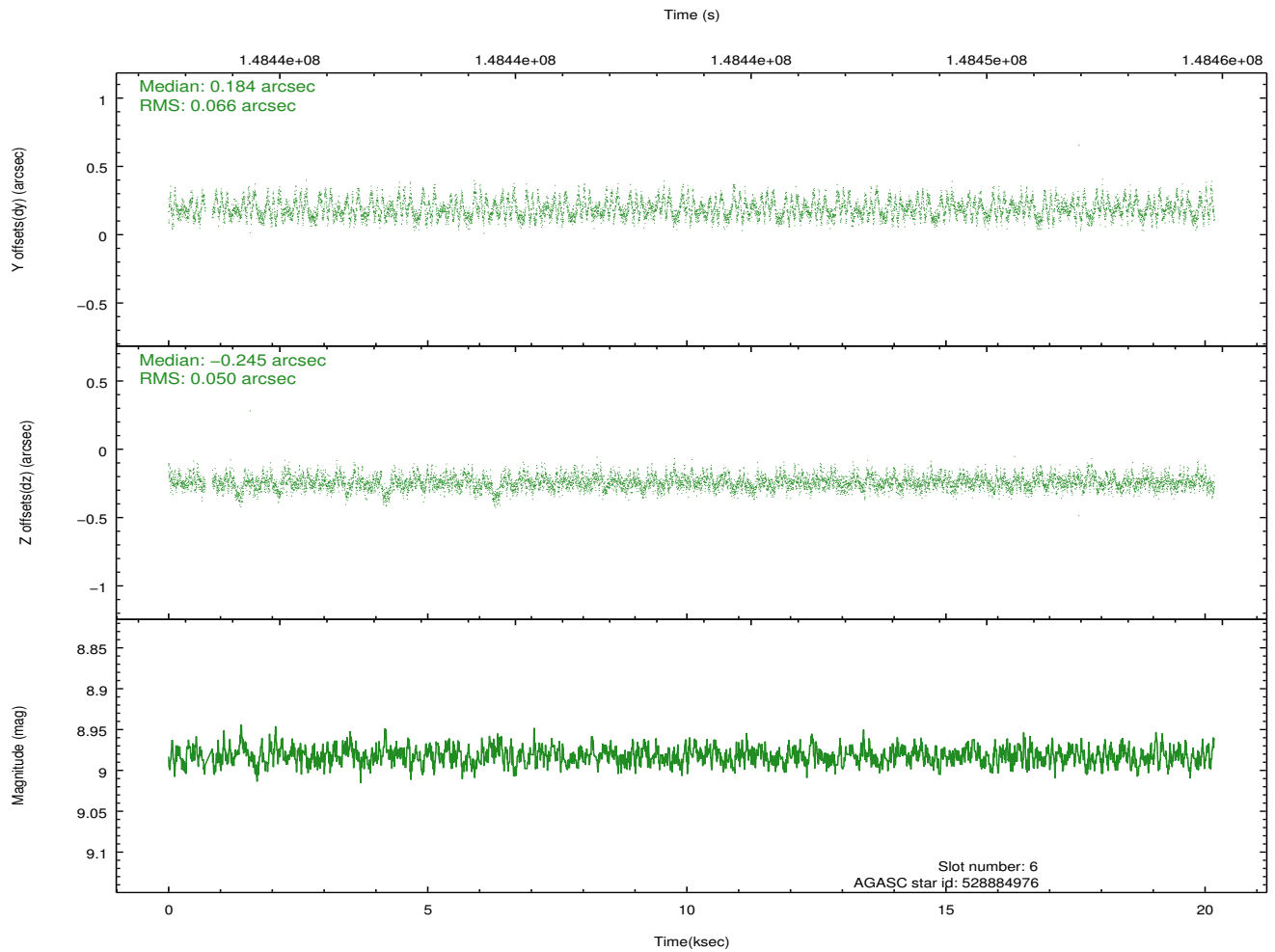
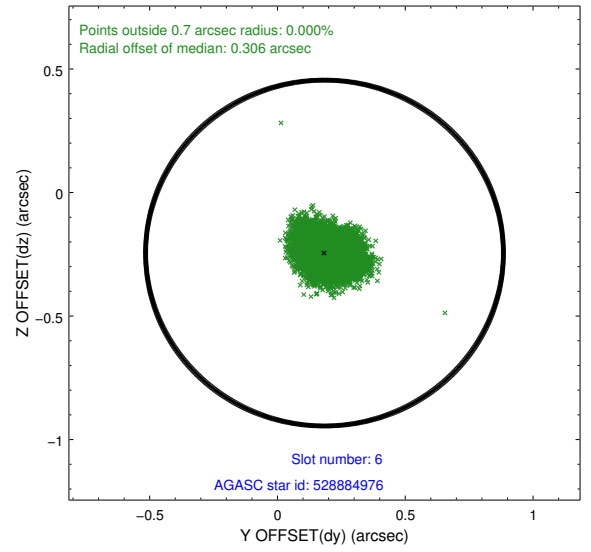
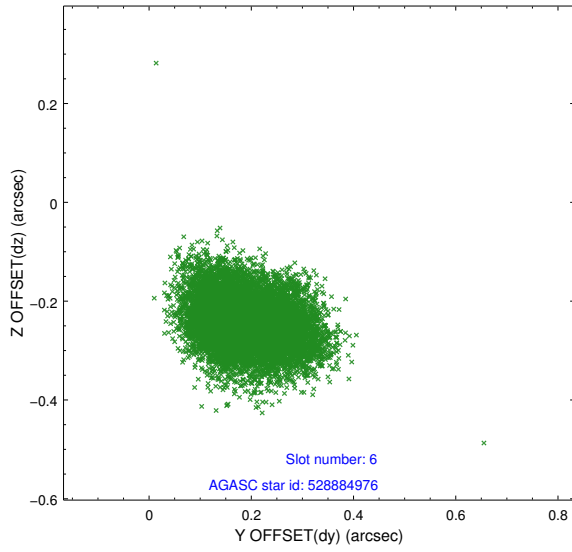
Time (s)



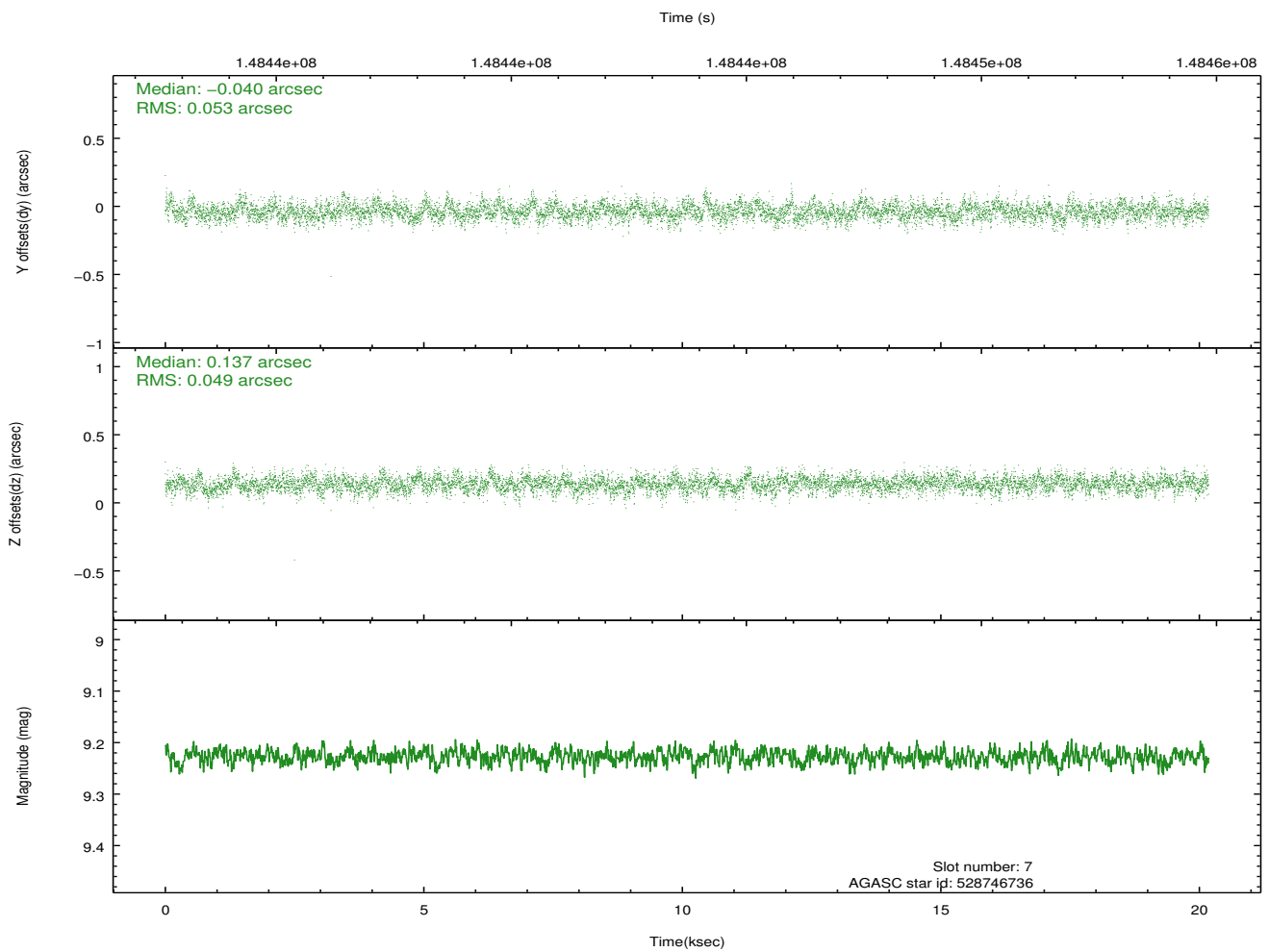
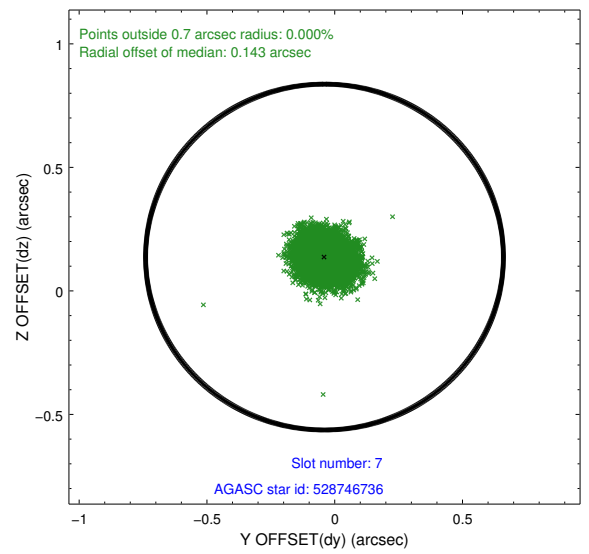
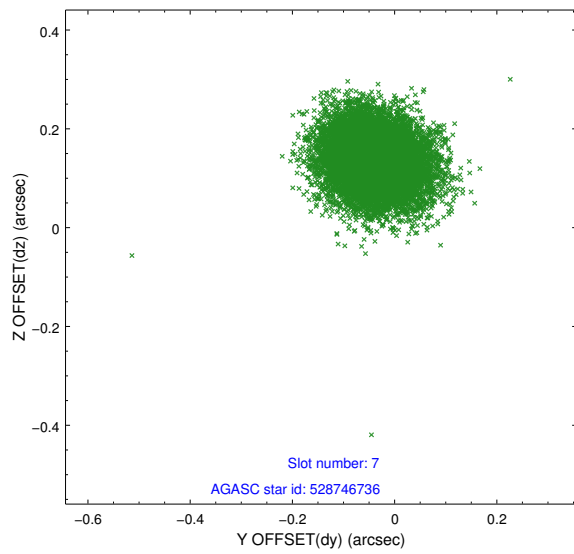
2.4.3 Slot 5



2.4.4 Slot 6

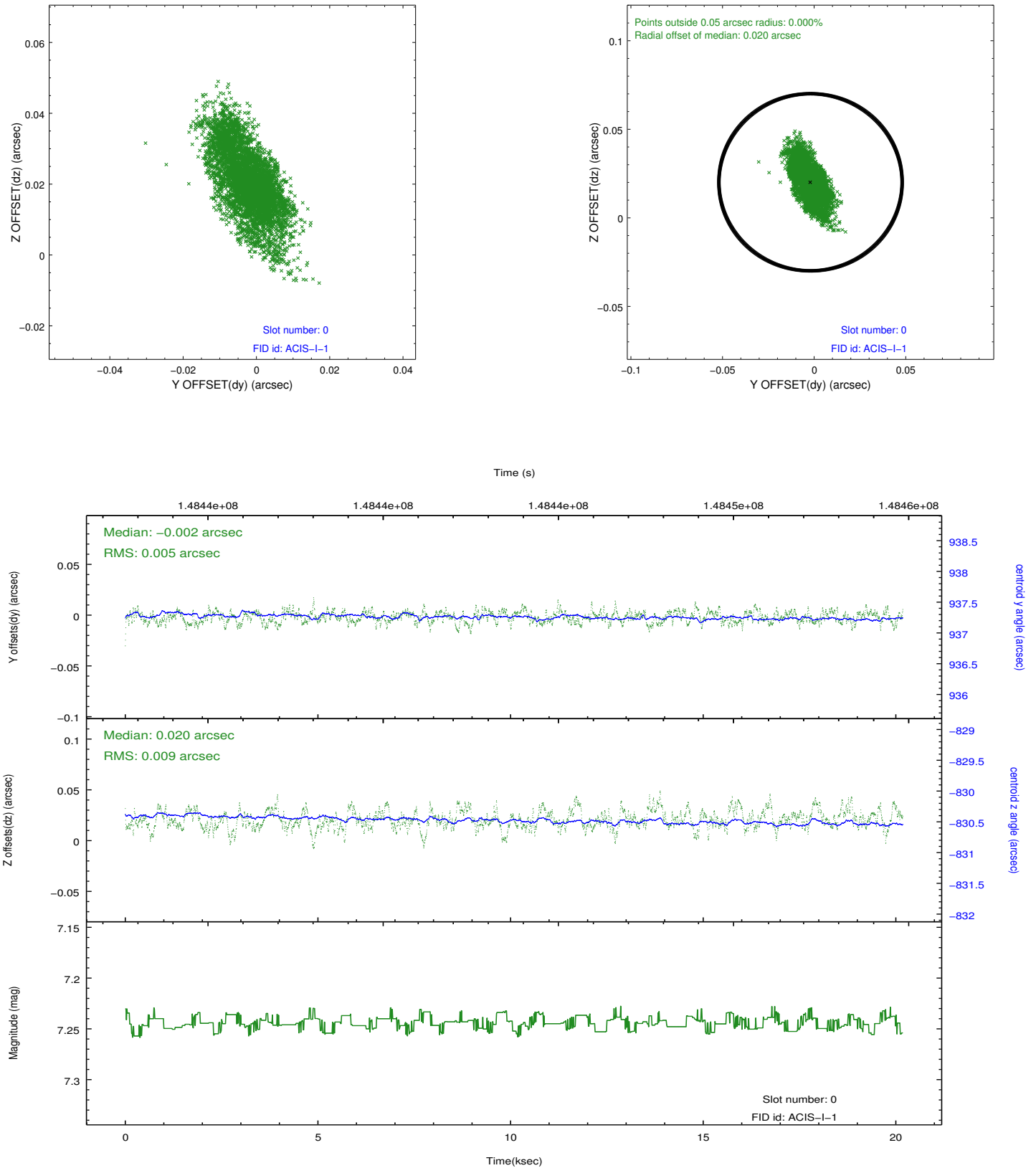


2.4.5 Slot 7

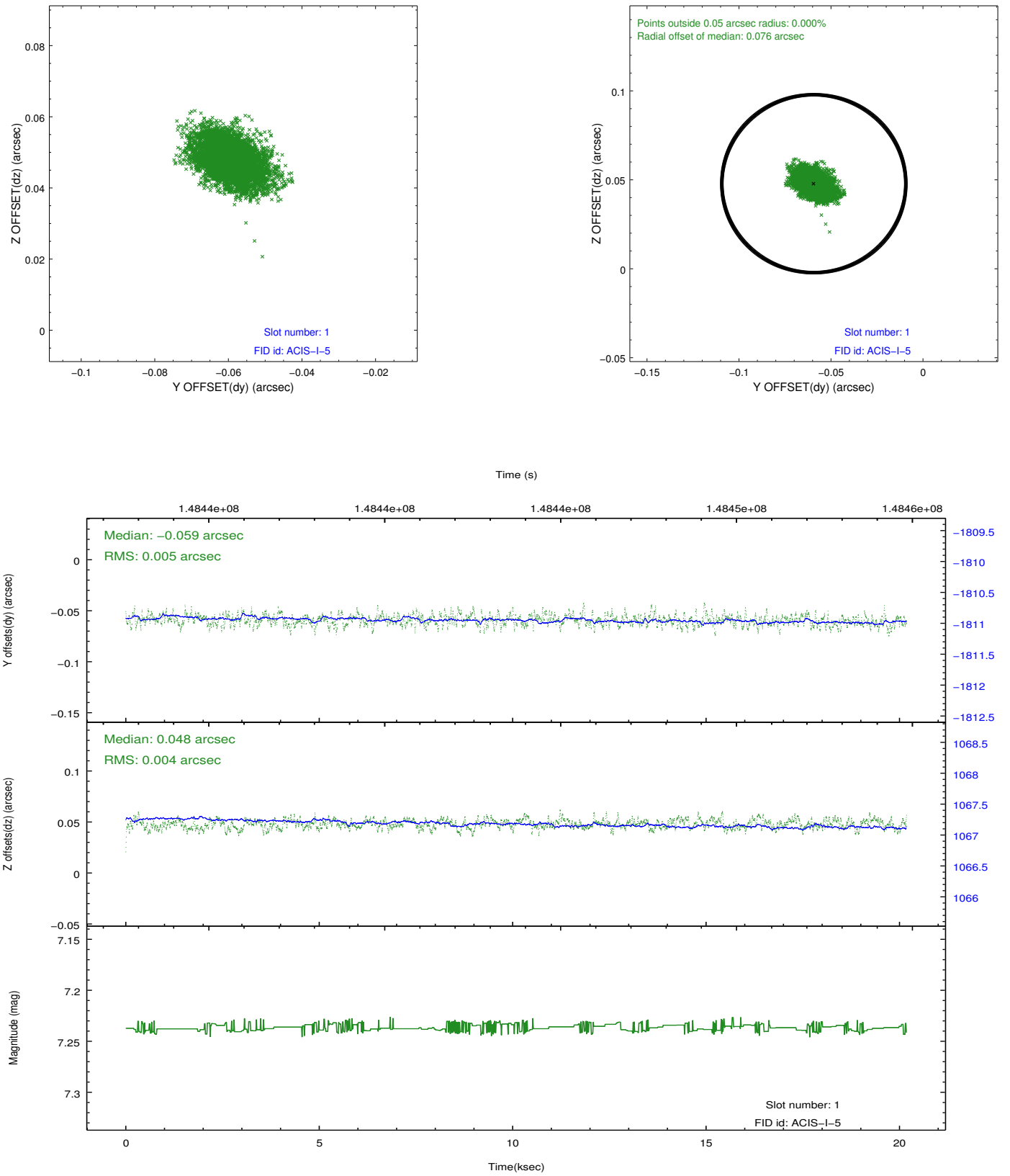


2.5 FID Slots

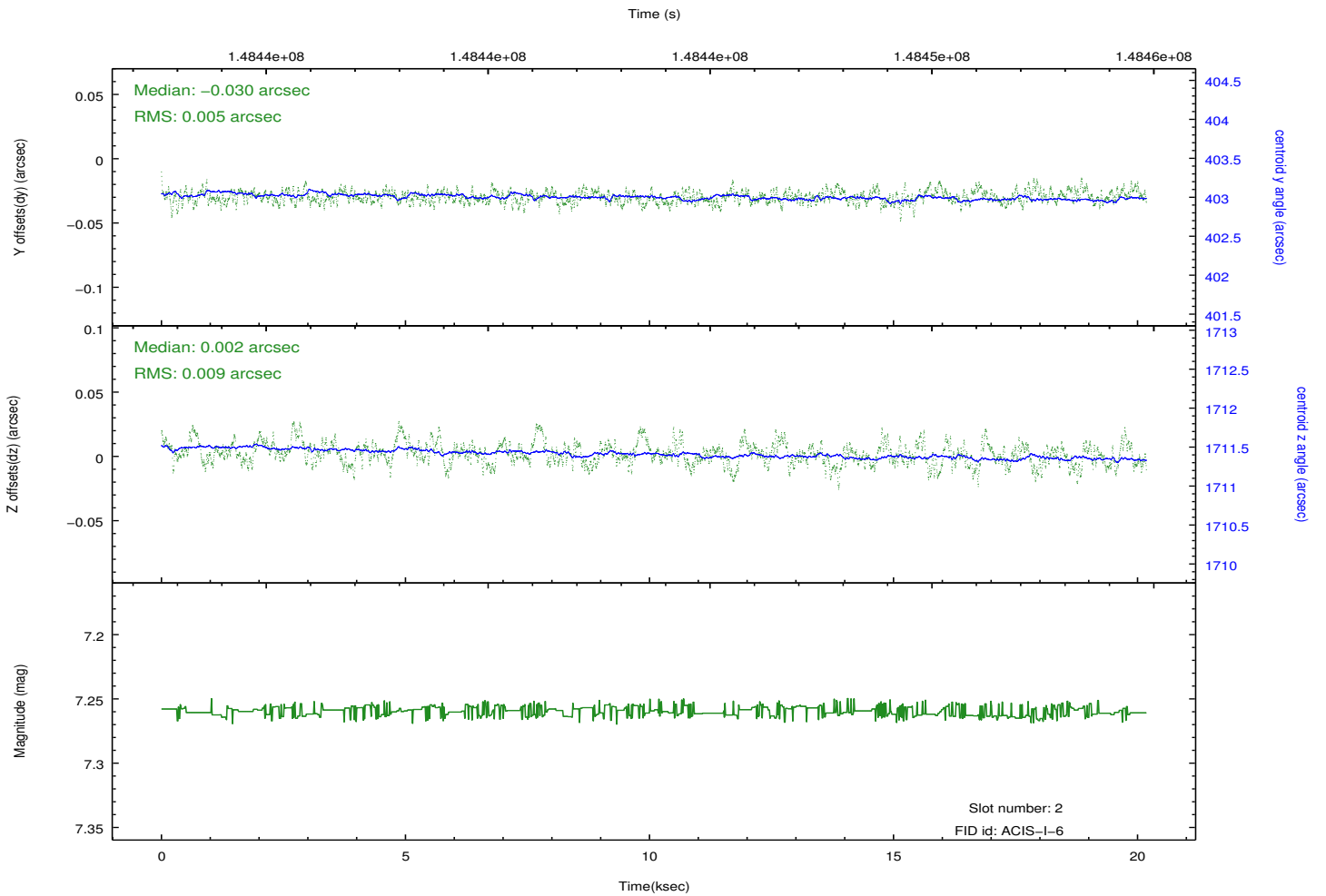
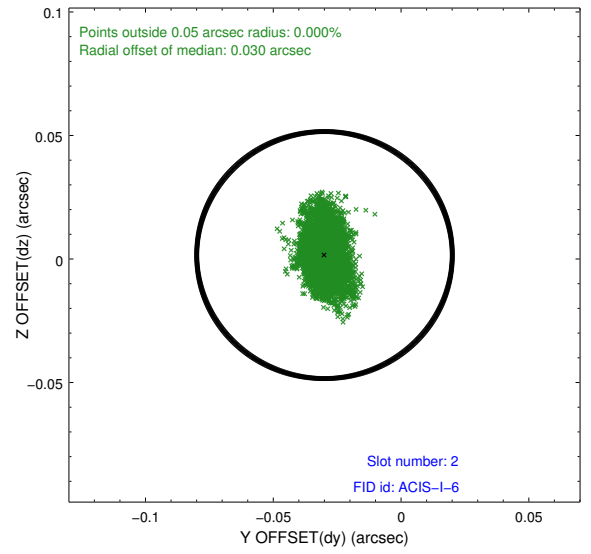
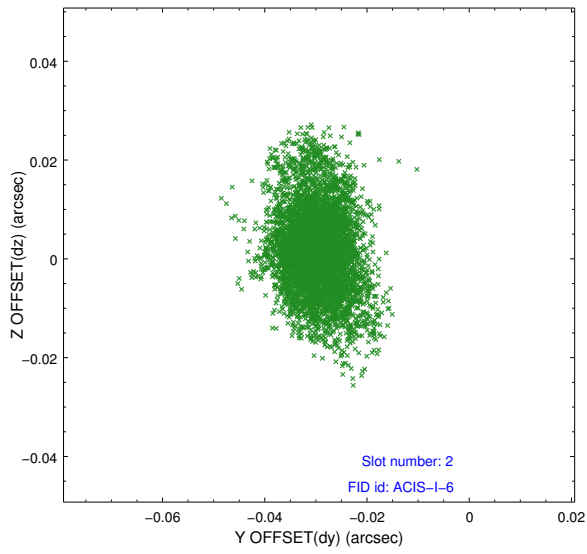
2.5.1 Slot 0



2.5.2 Slot 1



2.5.3 Slot 2



A Summary

A.1 Status

V&V Scientist	Jen Lauer
V&V Date (YYYY-MM-DD)	2012.10.24
V&V Edition	1
V&V Disposition and Status	OK
V&V Charge Time	19.756

A.2 Comments