

# V&V Reference Report

## L2 ASCDS Version : 8.4.5

Observation 2832 - L2 Version 3  
Chandra X-Ray Center

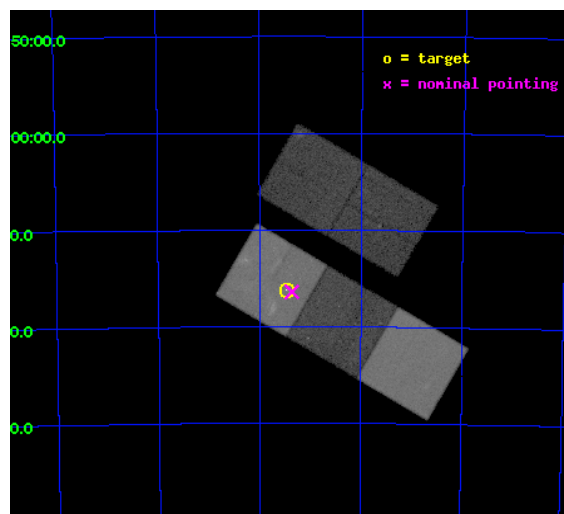
L2 Processing Date : Oct 7 2012

## Contents

<b>1</b>	<b>Front</b>	<b>2</b>
<b>2</b>	<b>OBI</b>	<b>3</b>
2.1	OBI . . . . .	3
2.1.1	Images . . . . .	3
2.1.2	Bias . . . . .	3
2.1.3	Parameters . . . . .	4
2.1.4	Events . . . . .	4
2.2	Compared Parameters . . . . .	5
2.3	Aspect . . . . .	6
2.4	Star Slots . . . . .	9
2.4.1	Slot 3 . . . . .	9
2.4.2	Slot 4 . . . . .	10
2.4.3	Slot 5 . . . . .	11
2.4.4	Slot 6 . . . . .	12
2.4.5	Slot 7 . . . . .	13
2.5	FID Slots . . . . .	14
2.5.1	Slot 0 . . . . .	14
2.5.2	Slot 1 . . . . .	15
2.5.3	Slot 2 . . . . .	16
<b>A</b>	<b>Summary</b>	<b>17</b>
A.1	Status . . . . .	17
A.2	Comments . . . . .	17

# 1 Front

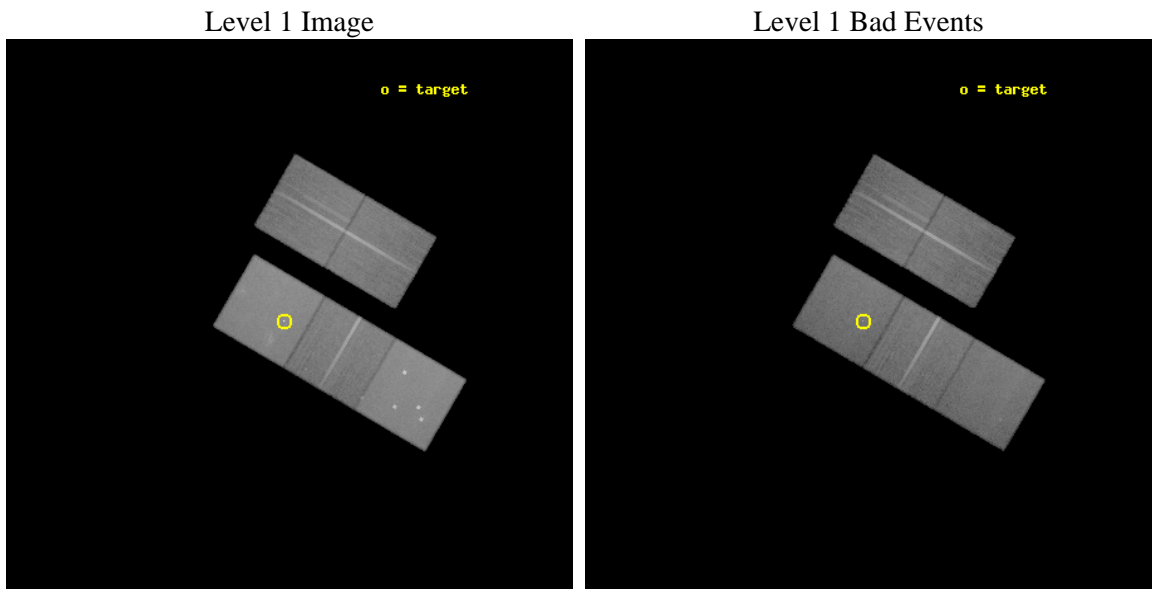
seq_num	500282	Sequence number
obs_id	2832	Observation id
title	THE RAPIDLY EVOLVING YOUNG SUPERNOVA REMNANT, SNR1987A	Proposal ti
observer	Prof. David Burrows	Principal investigator
object	SNR 1987A	Source name
dtcycle	0	&#160
cycle	P	events from which exps? Prim/Second/Both
ra_targ	83.866667	Observer's specified target RA [deg]
dec_targ	-69.26975	Observer's specified target Dec [deg]
ra_nom	83.840913464475	Nominal RA [deg]
dec_nom	-69.273091894446	Nominal Dec [deg]
roll_nom	210.27841378106	Nominal Roll [deg]
revision	3	Processing version of data
ontime	44844.223933697	Sum of GTIs [s]
livetime	44258.301134166	Livetime [s]
ontime2	44844.059773684	Sum of GTIs [s]
ontime3	44844.100813687	Sum of GTIs [s]
ontime5	44844.182893693	Sum of GTIs [s]
ontime6	44841.000893474	Sum of GTIs [s]
ontime7	44844.223933697	Sum of GTIs [s]
l2events	469075	Number of level 2 events



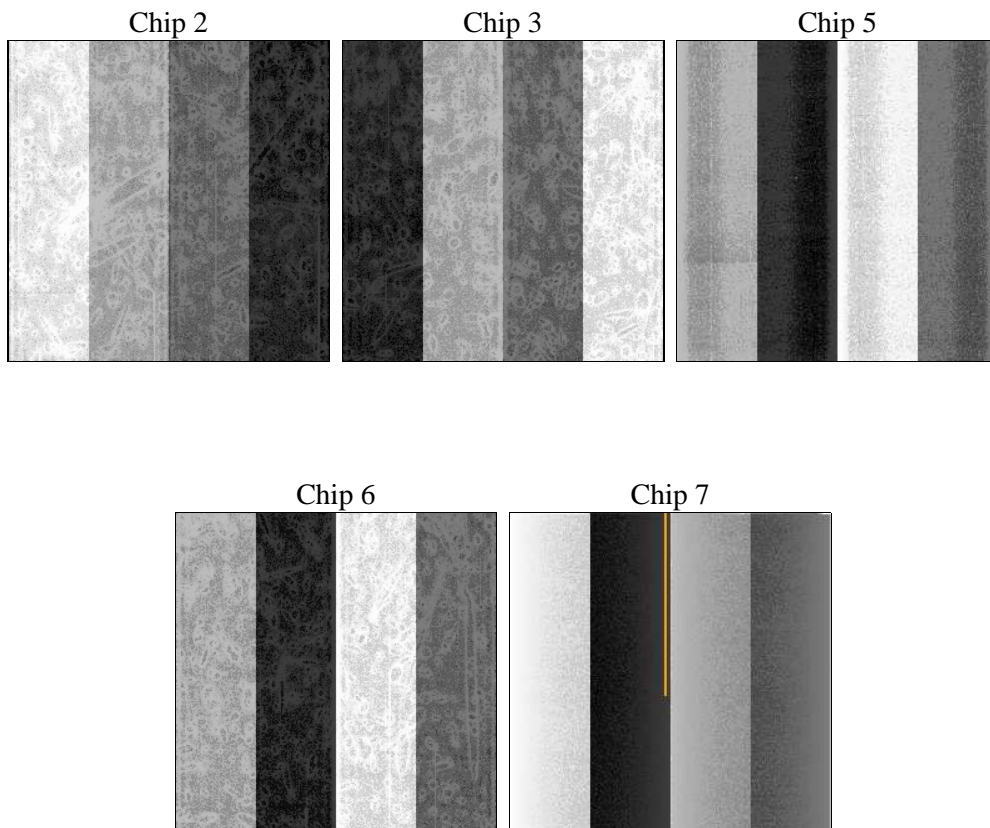
## 2 OBI

### 2.1 OBI

#### 2.1.1 Images



#### 2.1.2 Bias



### 2.1.3 Parameters

obi_num	1	Obi number	sched_exp_time	45000.000000	[s] Scheduled observation exposure time
ascdsver	8.4.5	Processing system revision	ontime	44844.223933697	Sum of GTIs [s]
caldbver	4.5.2	&#160	ontime2	44844.059773684	Sum of GTIs [s]
date	2012-10-07T12:46:18	Date and time of file creation	ontime3	44844.100813687	Sum of GTIs [s]
revision	3	Processing version of data	ontime5	44844.182893693	Sum of GTIs [s]
			ontime6	44841.000893474	Sum of GTIs [s]
			ontime7	44844.223933697	Sum of GTIs [s]
			l1events	1688860	Number of level 1 events

### 2.1.4 Events

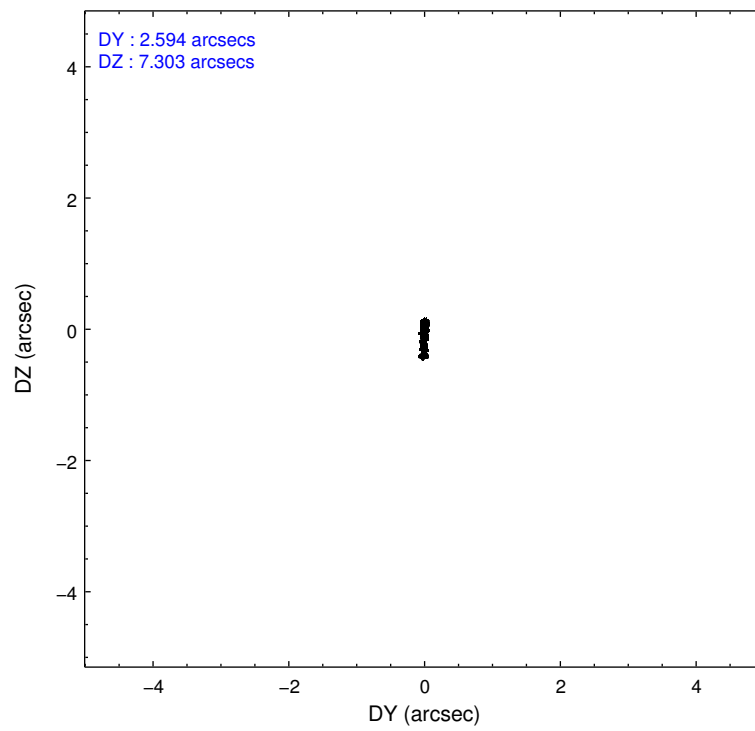
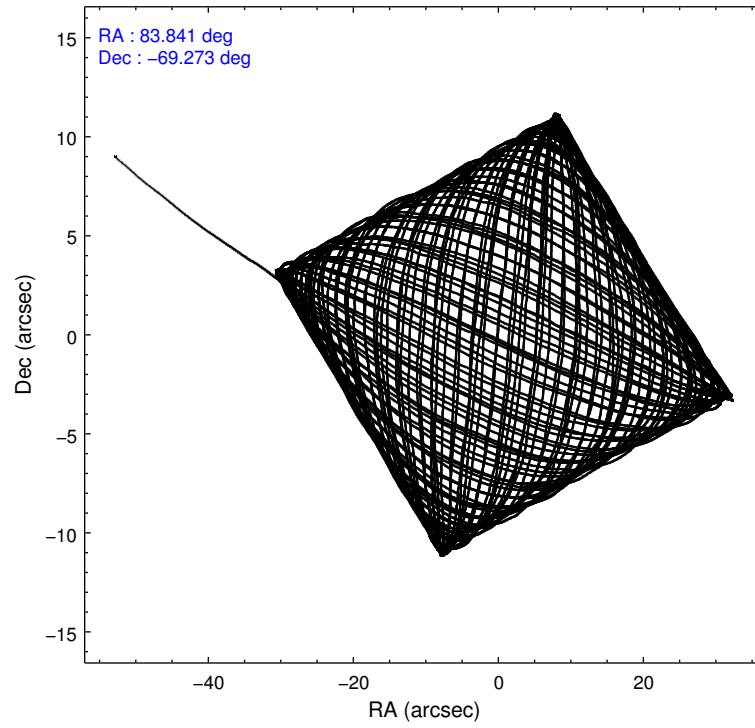
	ccd 2	ccd 3	ccd 5	ccd 6	ccd 7
level 1 events	281609	278950	427569	292016	408716
rejected events	245622	244381	221072	249294	219216
rejected %	87%	87%	51%	85%	53%

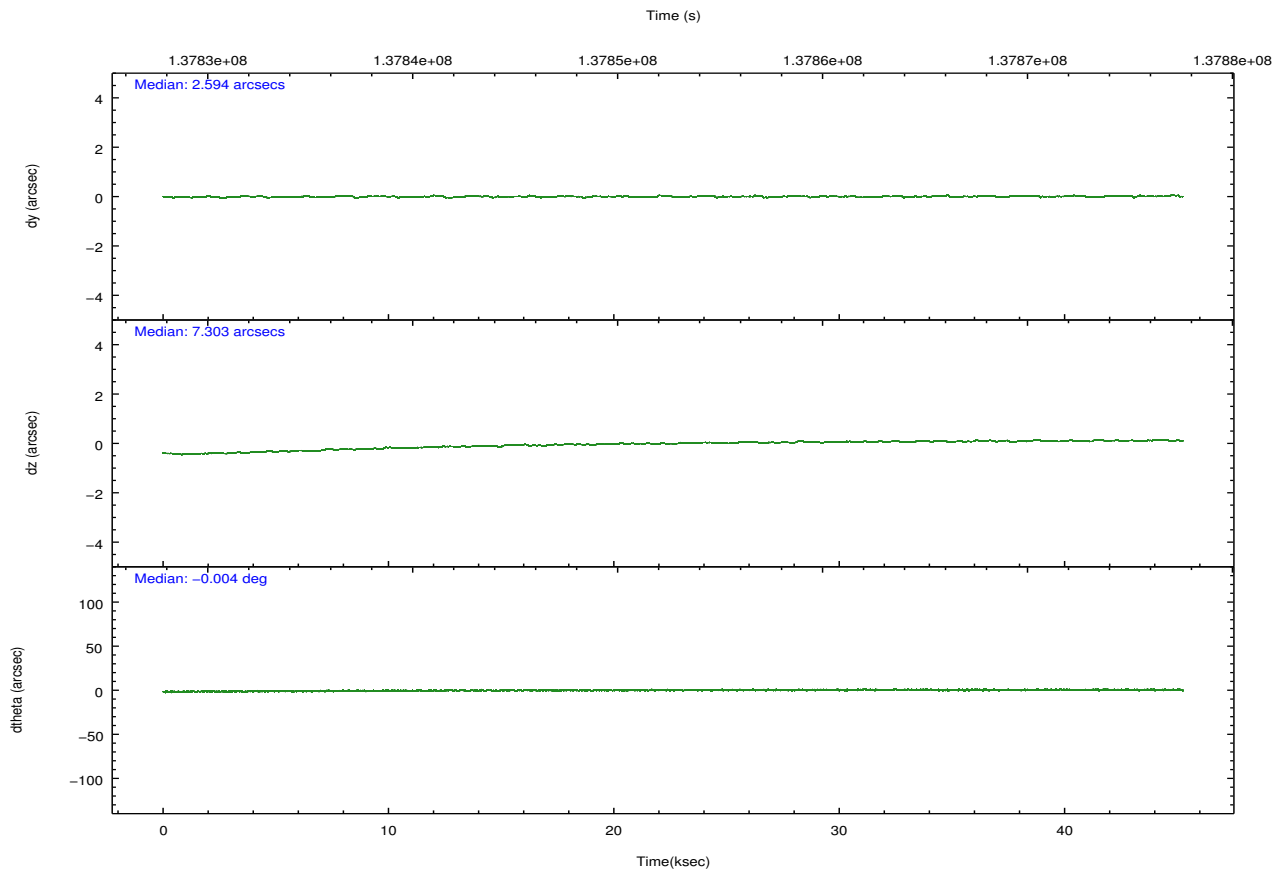
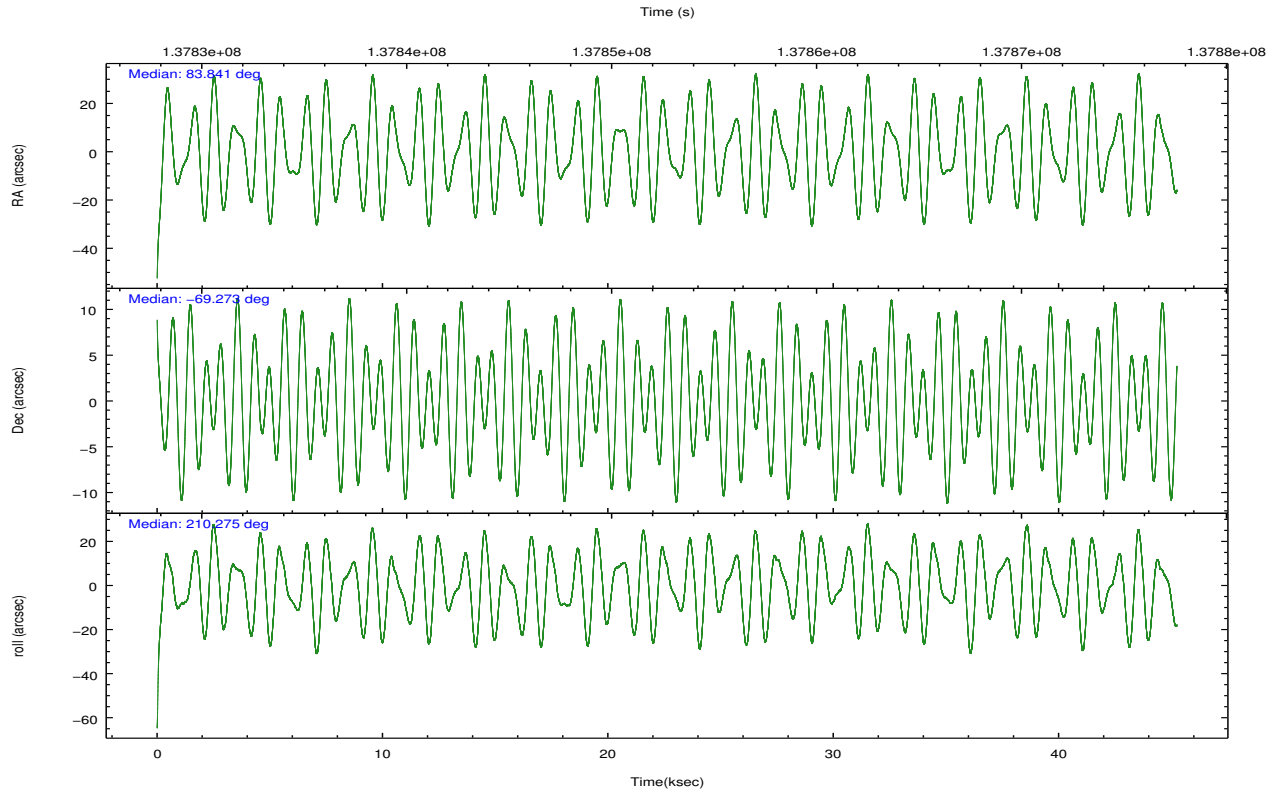
	ccd 2	ccd 3	ccd 5	ccd 6	ccd 7
grade 0 events	17016	15986	36356	22001	26324
	6%	5%	8%	7%	6%
grade 1 events	136	142	697	174	446
	0%	0%	0%	0%	0%
grade 2 events	7224	6657	55780	7324	40102
	2%	2%	13%	2%	9%
grade 3 events	3156	3143	9011	3442	18275
	1%	1%	2%	1%	4%
grade 4 events	3021	3112	8570	3396	18180
	1%	1%	2%	1%	4%
grade 5 events	9619	11379	30763	12627	35784
	3%	4%	7%	4%	8%
grade 6 events	5575	5677	96804	6561	86638
	1%	2%	22%	2%	21%
grade 7 events	235862	232854	189588	236491	182967
	83%	83%	44%	80%	44%

## 2.2 Compared Parameters

Parameter	Planned	Actual	Parameter	Planned	Actual
Instrument	ACIS	ACIS	Obspar format version number	7	7
Detector	ACIS-23567	ACIS-23567	Obspar file type	PREDICTED	ACTUAL
Grating	NONE	NONE	Obspar update status	NONE	UPDATED
Data mode	FAINT	FAINT	Number of optional ACIS chips dropped	0	0
Observation mode	POINTING	POINTING	On-chip summing requested	N	N
[deg] Pointing RA	83.878228	83.84091346447516	Subarray requested	NONE	NONE
[deg] Pointing Dec	-69.249261	-69.27309189444625	Alternating exposures requested	N	N
[deg] Pointing Roll	210.156681	210.27841378106	[s] Primary exposure time	0.000000	3.1
[mm] SIM focus pos	-0.684267	-0.6828225247311905			
[mm] SIM defocus	0	0.001444936568705701			
[mm] SIM translation stage pos	-190.132523	-190.1400660498719			
[mm] SIM translation stage offset	0	0.00754346686406393			
[s] Observation start time (MET)	137830331.184000	137829329.31883			
Observation start date	2002-05-15T06:11:07	2002-05-15T05:55:29			
[s] Observation end time (MET)	137875331.184000	137876071.37074			
Observation end date	2002-05-15T18:41:07	2002-05-15T18:54:31			
Read mode	TIMED	TIMED			

## 2.3 Aspect



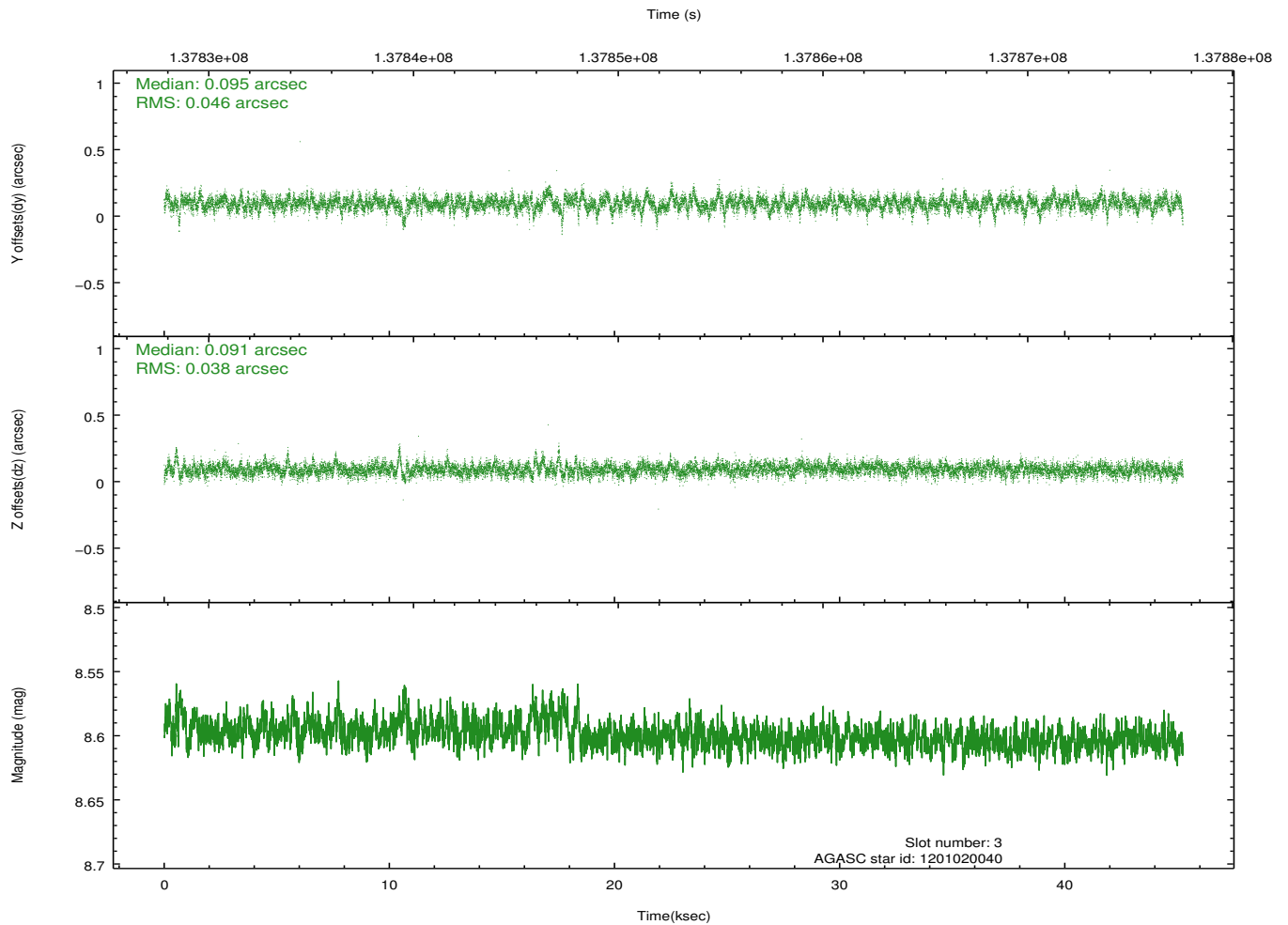
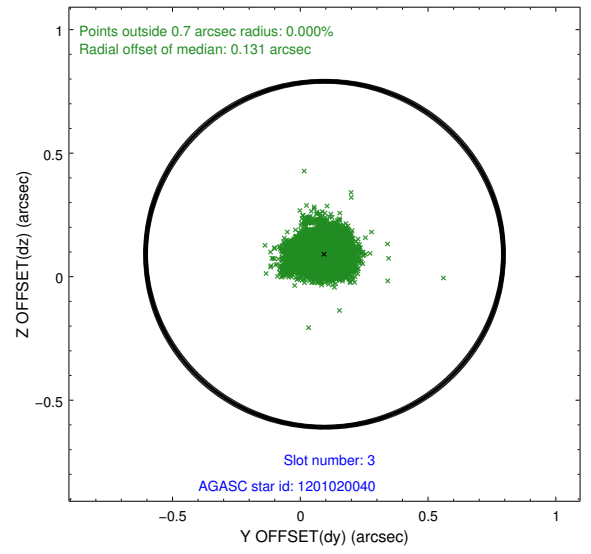
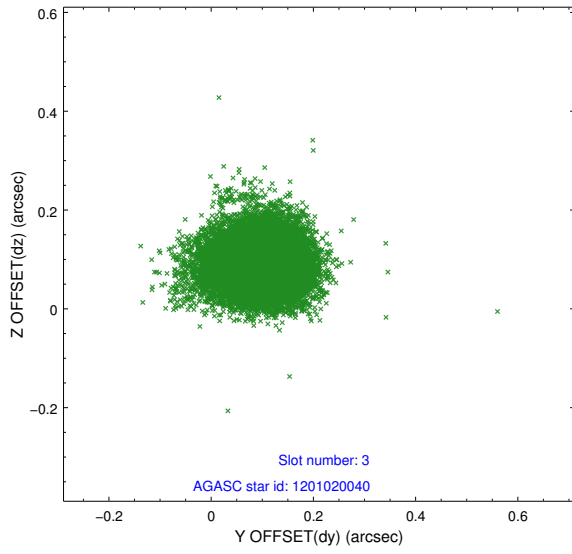


### Slot Statistics

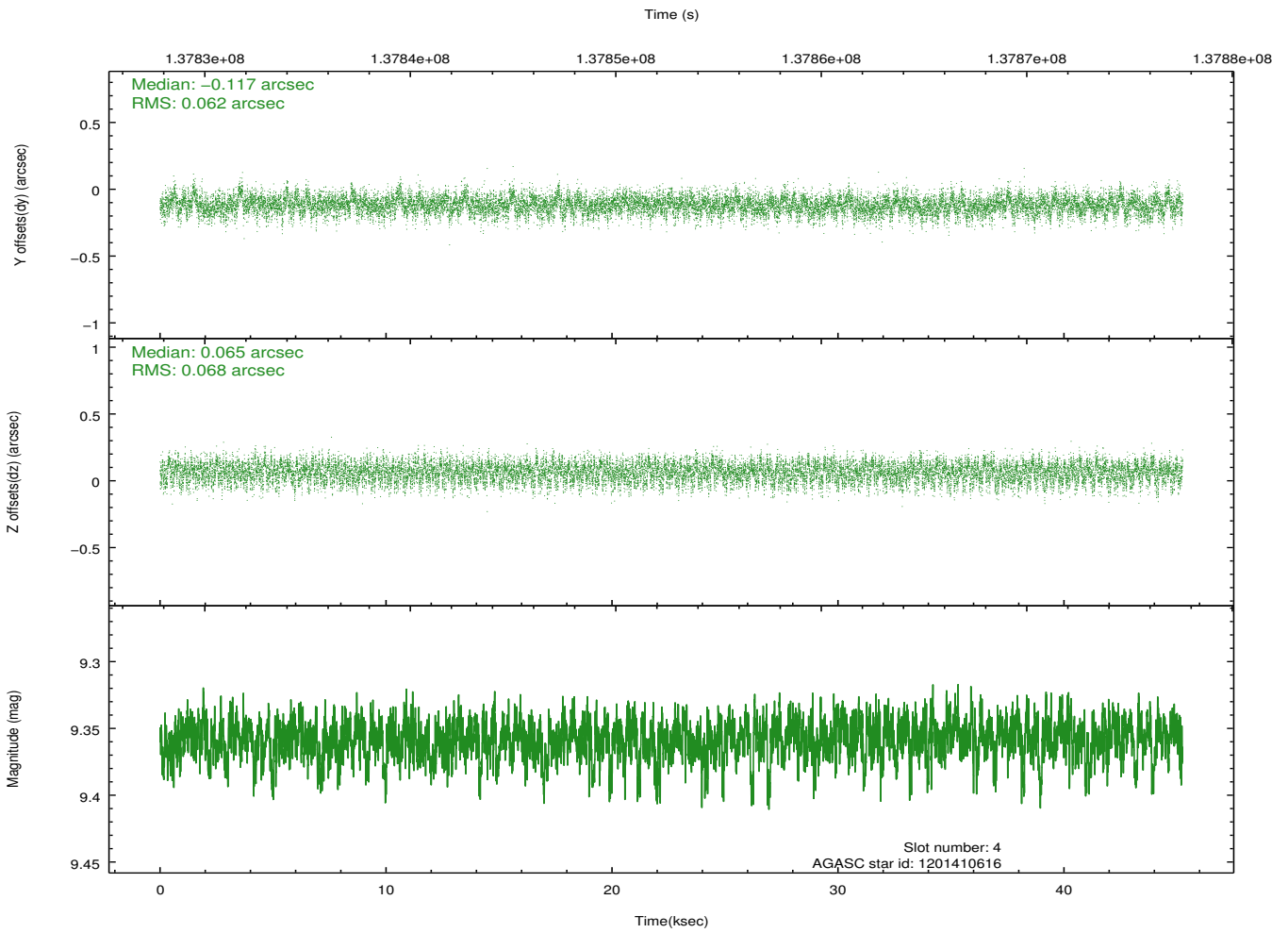
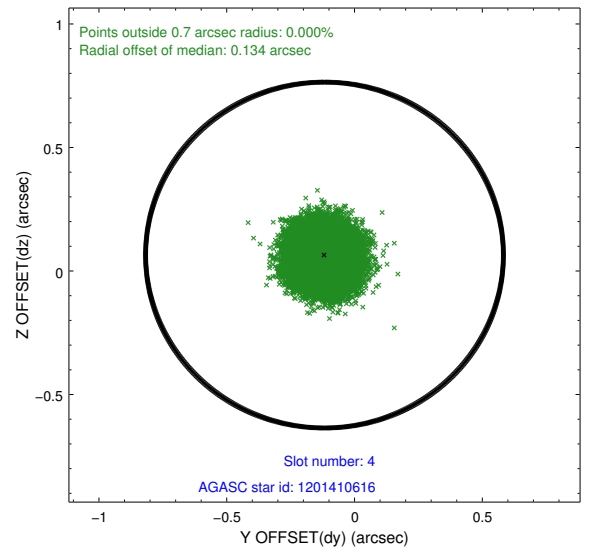
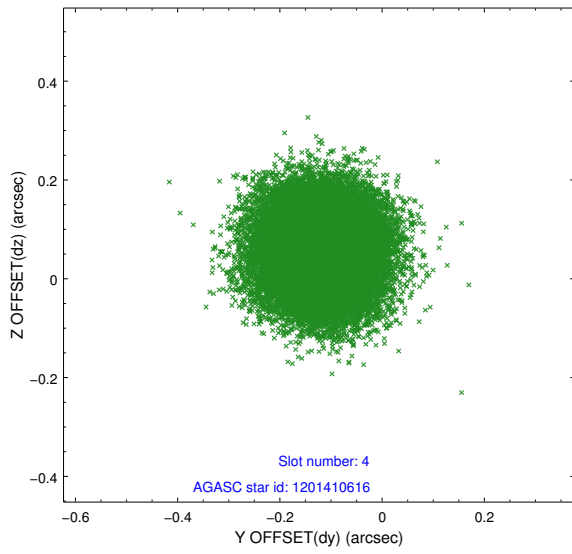
slot	status	id	mag	n_pts	med_dy	med_dz	dr1	dr2	ra	dec	mean_y	mean_z
0	FID	ACIS-S-2	7.11	11036	-0.013	0.008	0.008	0.013	0.000000	0.000000	-755.24	-1728.41
1	FID	ACIS-S-4	7.20	11034	-0.041	0.004	0.006	0.012	0.000000	0.000000	2158.01	180.07
2	FID	ACIS-S-5	7.24	11037	0.024	-0.004	0.008	0.013	0.000000	0.000000	-1808.05	173.74
3	GUIDE	1201020040	8.60	22069	0.095	0.091	0.062	0.106	85.379163	-68.879396	-2339.19	-152.38
4	GUIDE	1201410616	9.36	22059	-0.117	0.065	0.099	0.157	82.516808	-69.784406	2442.26	831.97
5	GUIDE	1201406992	9.24	22063	0.097	-0.114	0.124	0.192	83.682859	-69.471866	617.18	569.70
6	GUIDE	1200887248	9.70	22066	-0.100	0.050	0.122	0.193	82.362845	-68.868028	1024.18	-2153.13
7	GUIDE	1201019544	10.03	21963	0.022	-0.075	0.126	0.214	84.531594	-68.443947	-2200.25	-2068.64

## 2.4 Star Slots

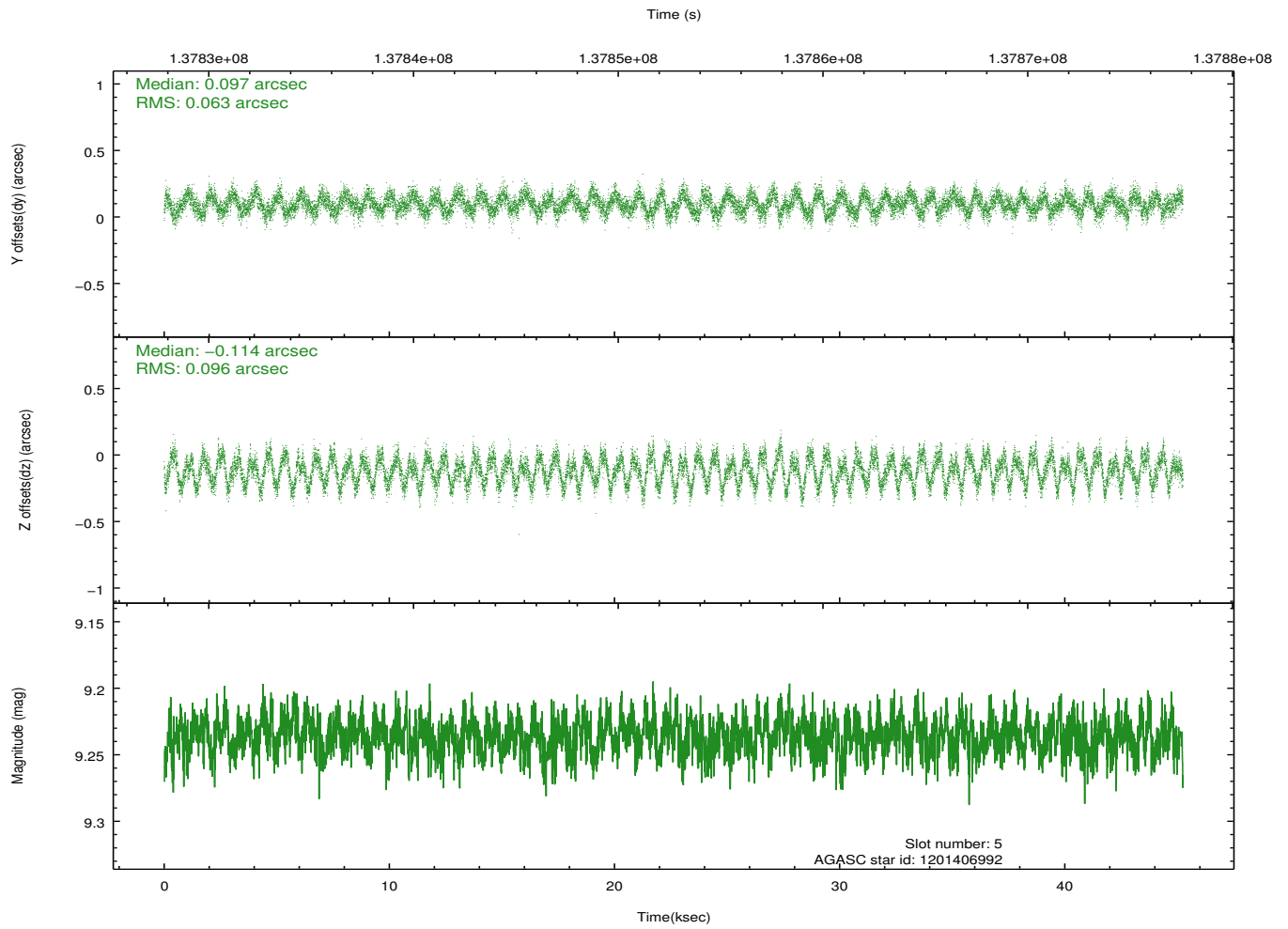
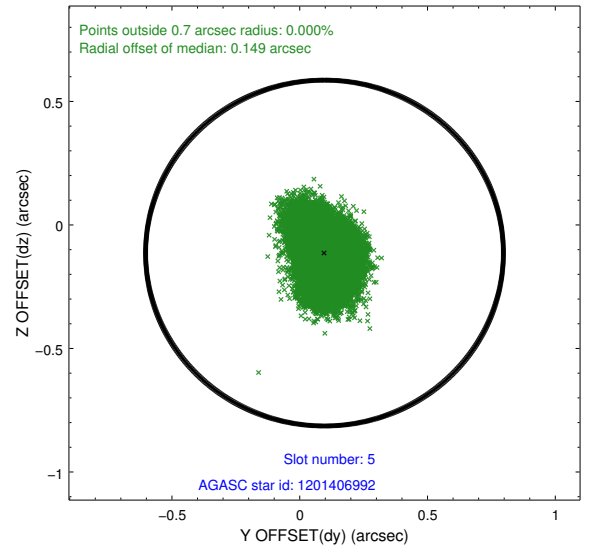
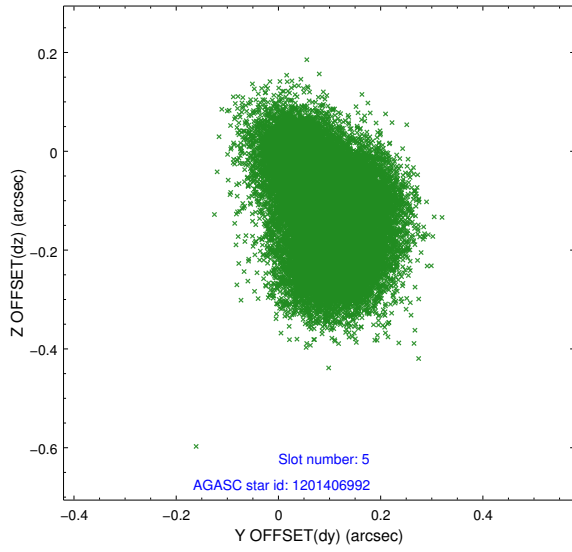
### 2.4.1 Slot 3



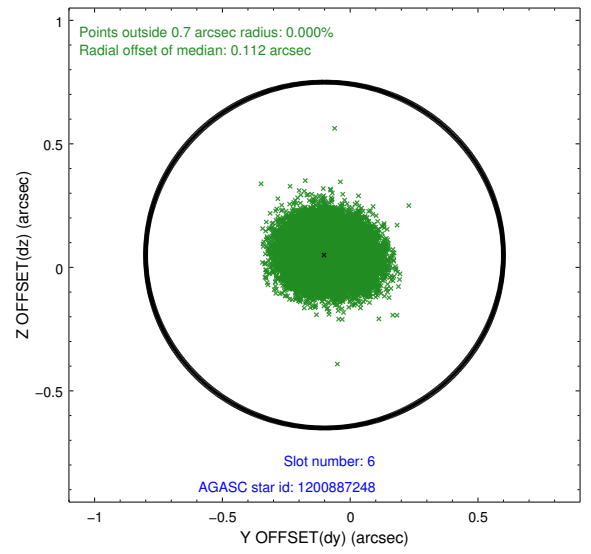
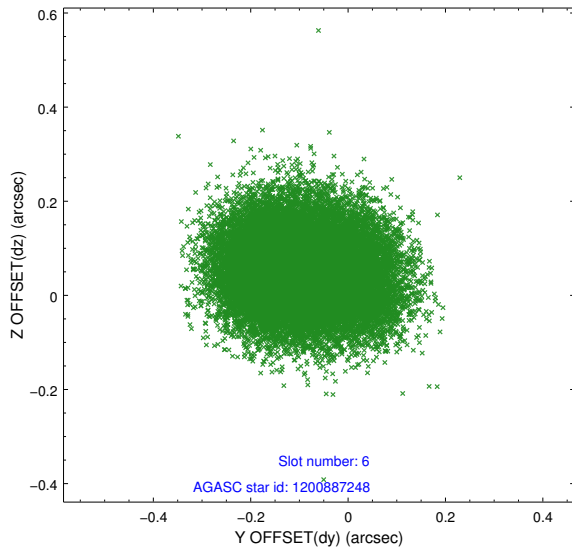
### 2.4.2 Slot 4



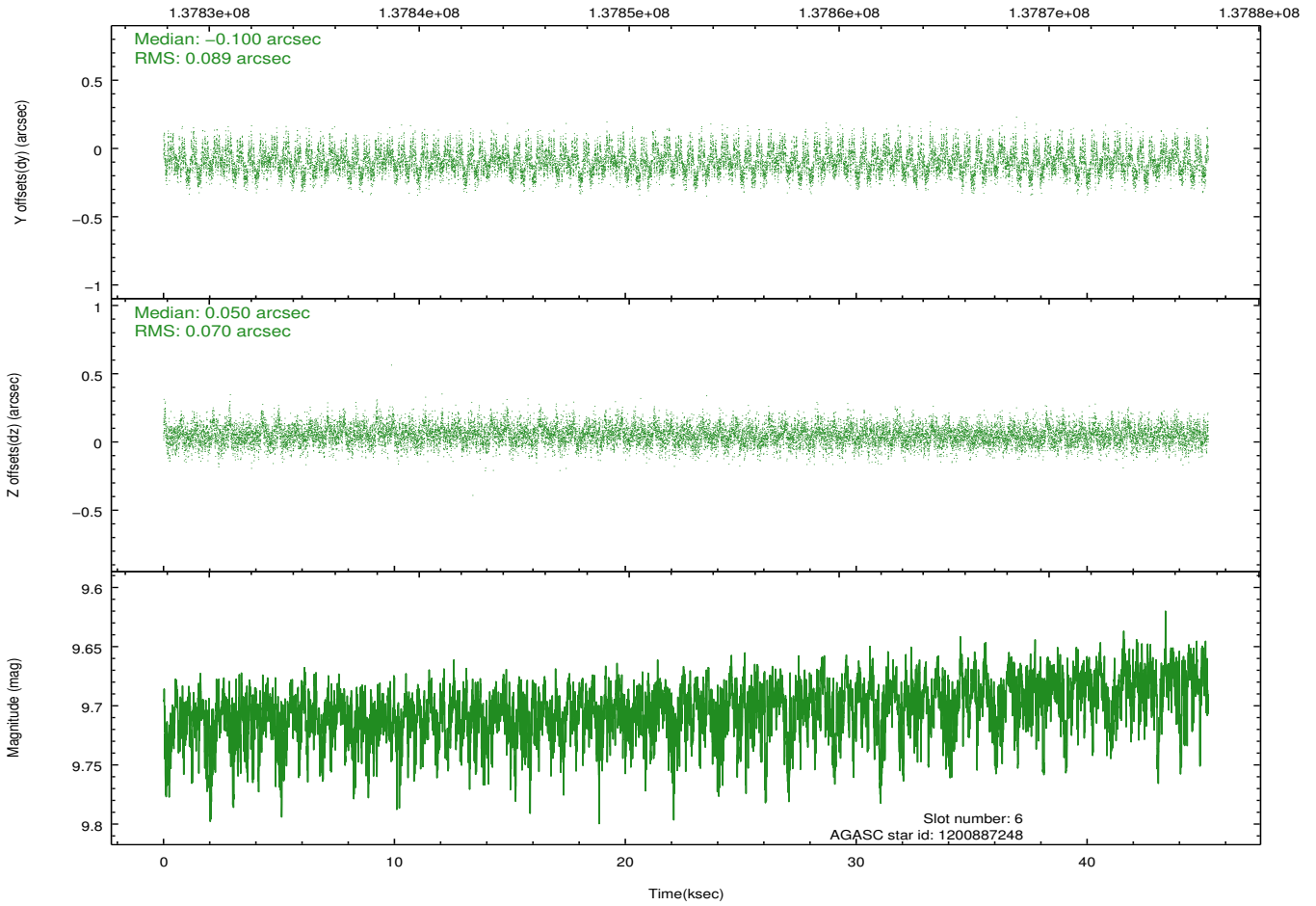
### 2.4.3 Slot 5



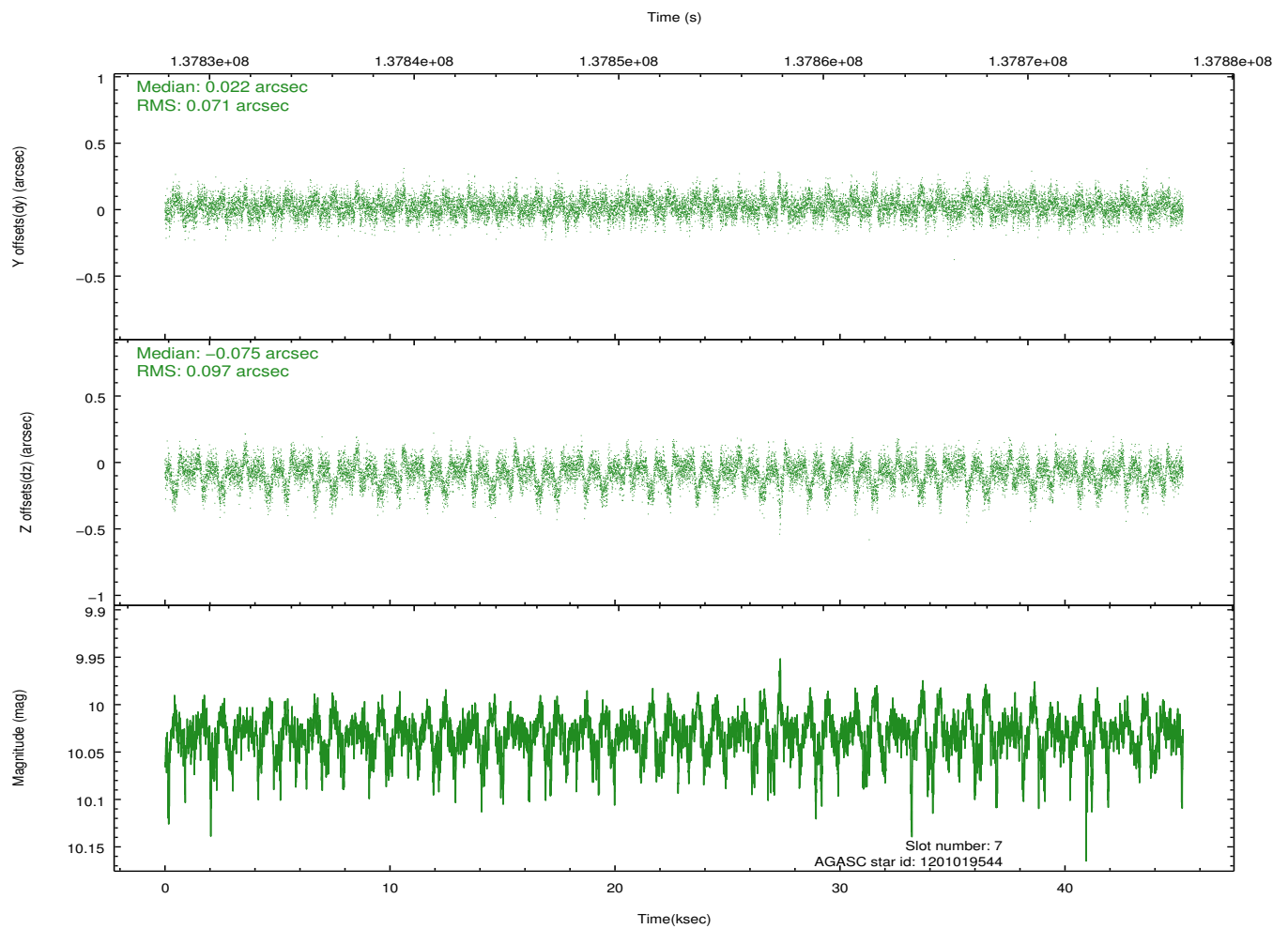
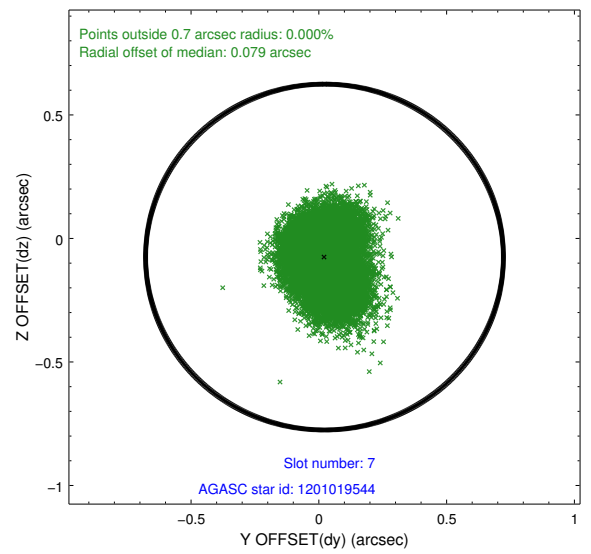
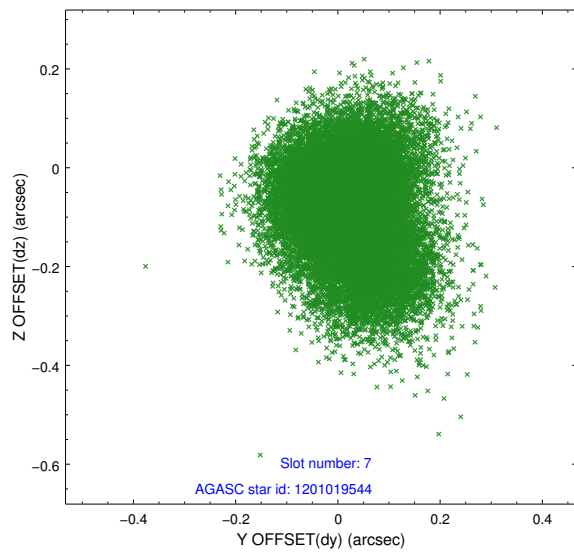
### 2.4.4 Slot 6



Time (s)

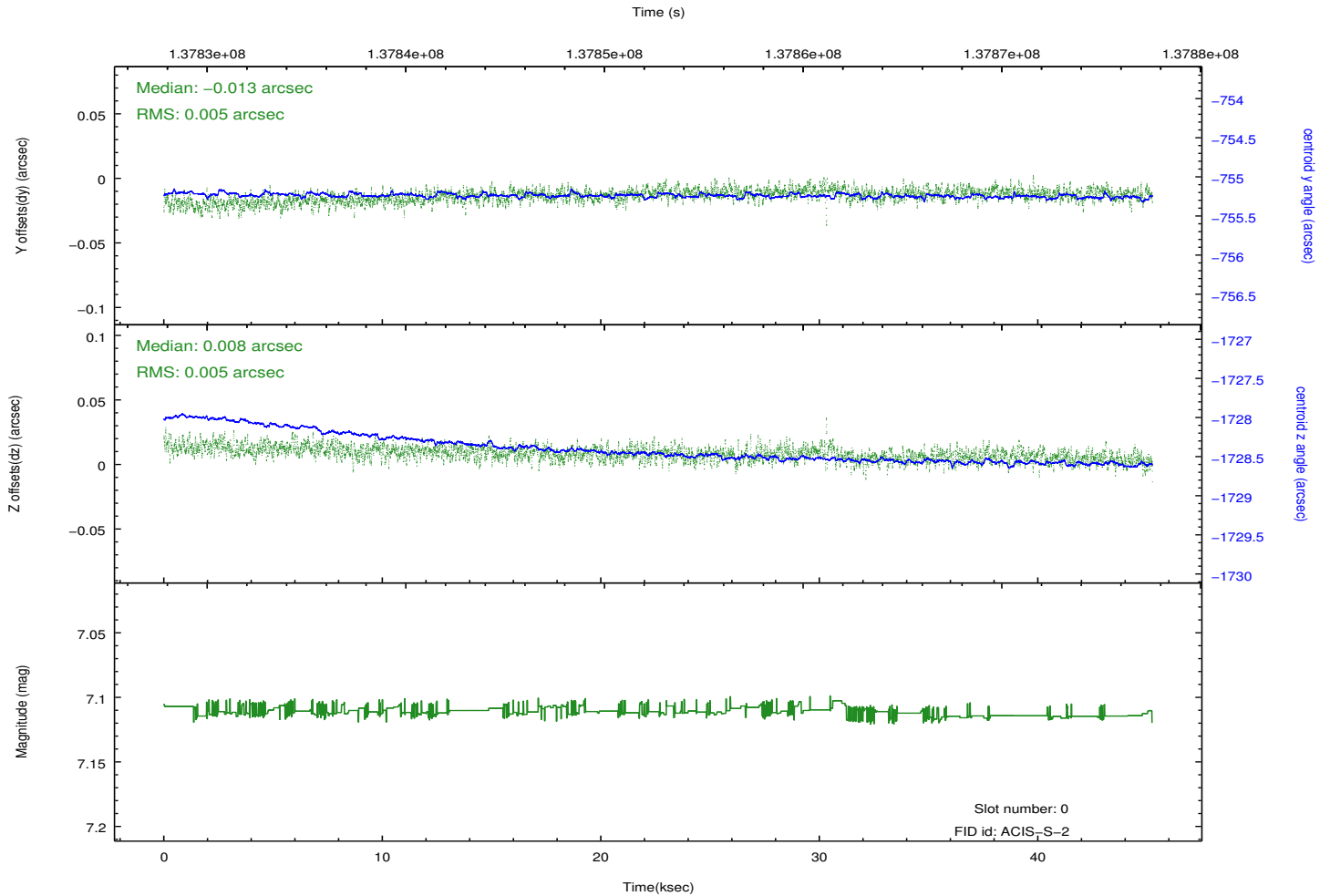
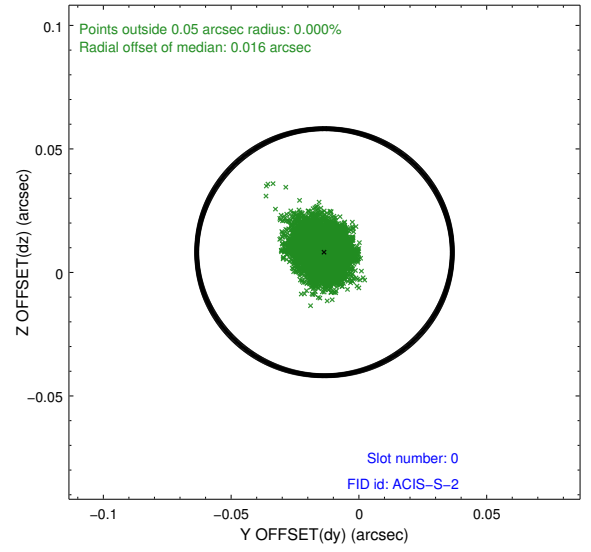
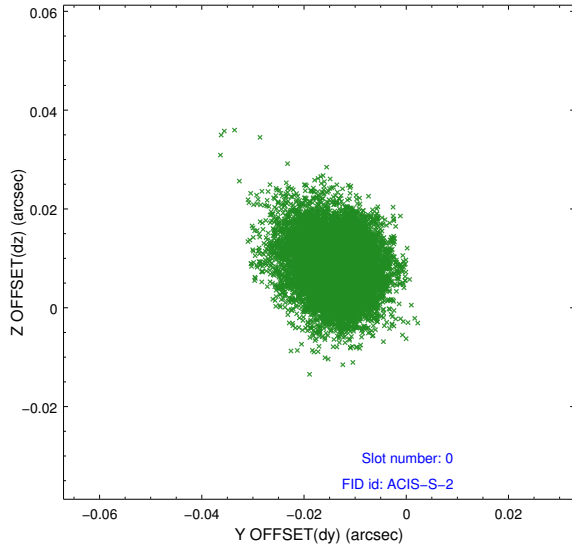


## 2.4.5 Slot 7

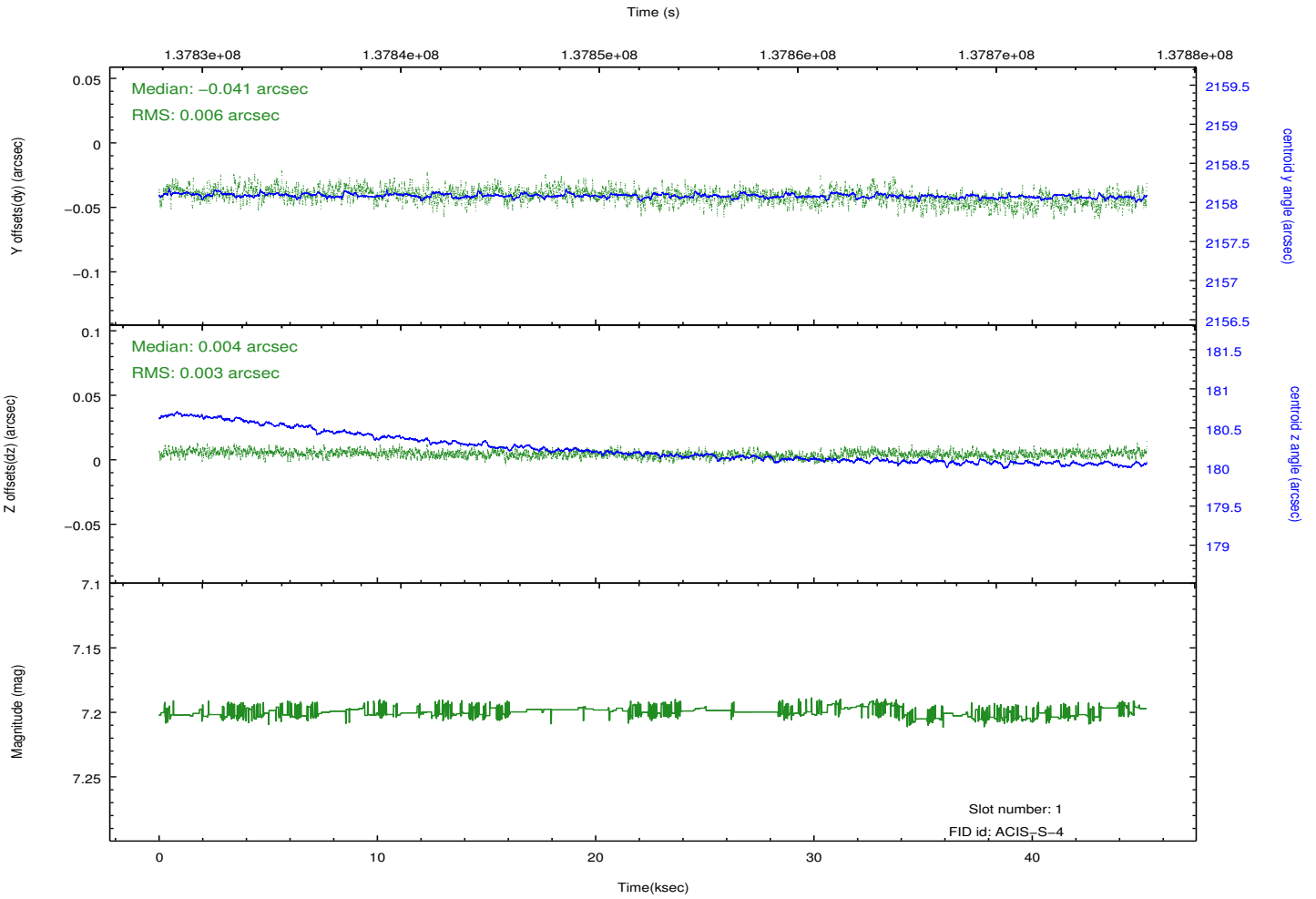
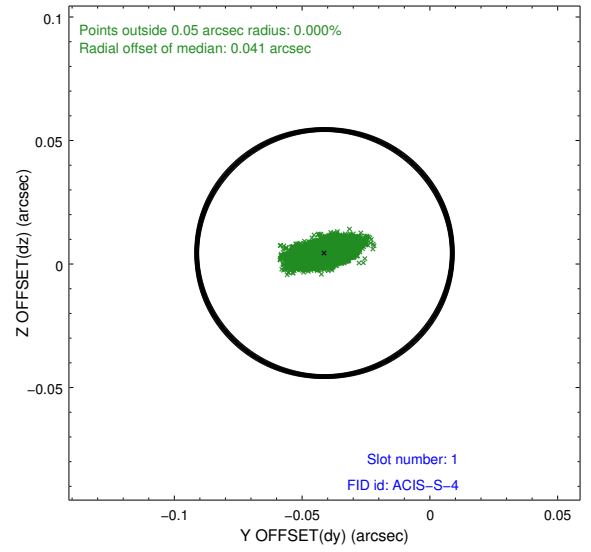
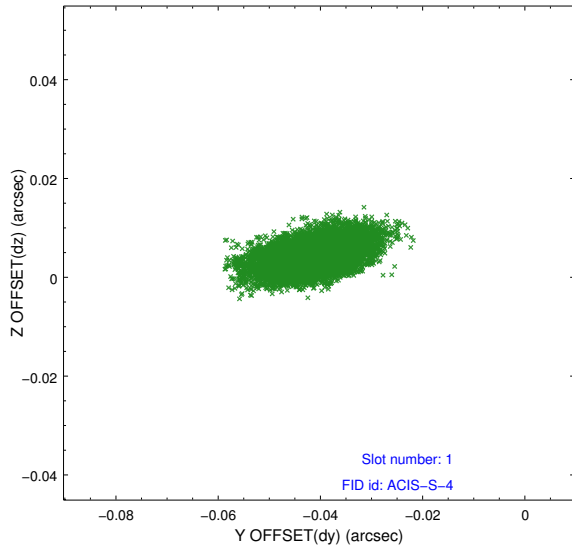


## 2.5 FID Slots

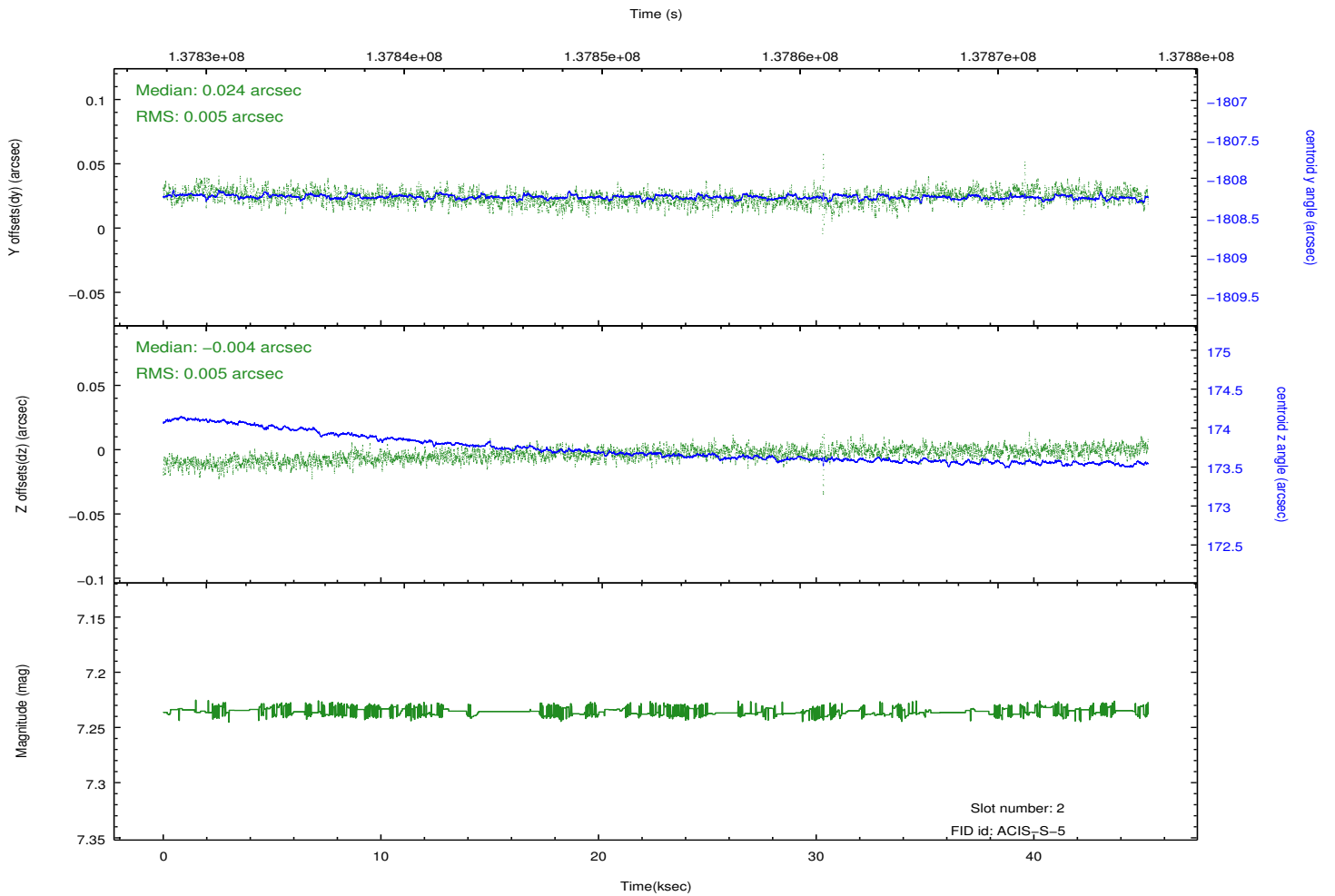
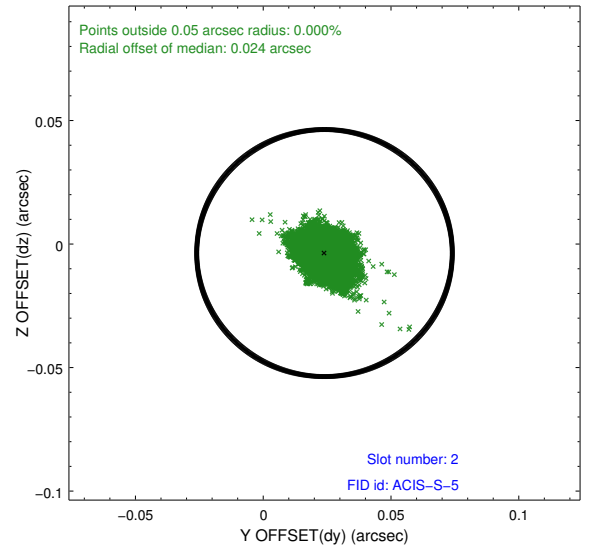
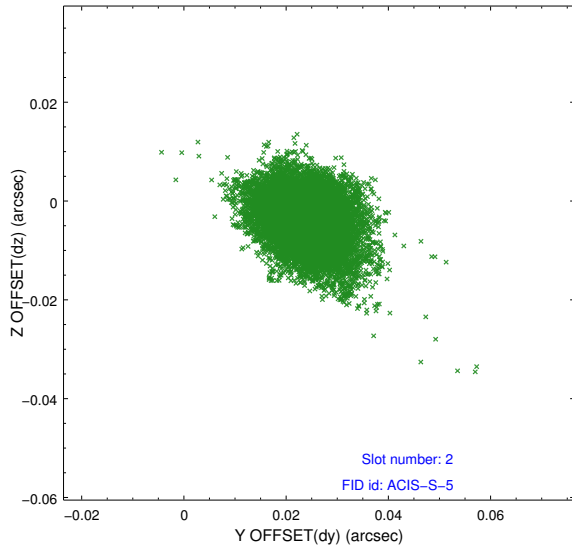
### 2.5.1 Slot 0



## 2.5.2 Slot 1



### 2.5.3 Slot 2



# A Summary

## A.1 Status

V&V Scientist	Beth Sundheim
V&V Date (YYYY-MM-DD)	2012.10.17
V&V Edition	1
V&V Disposition and Status	OK
V&V Charge Time	44.844

## A.2 Comments