

V&V Reference Report

L2 ASCDS Version : 8.4.5

Observation 3222 - L2 Version 3
Chandra X-Ray Center

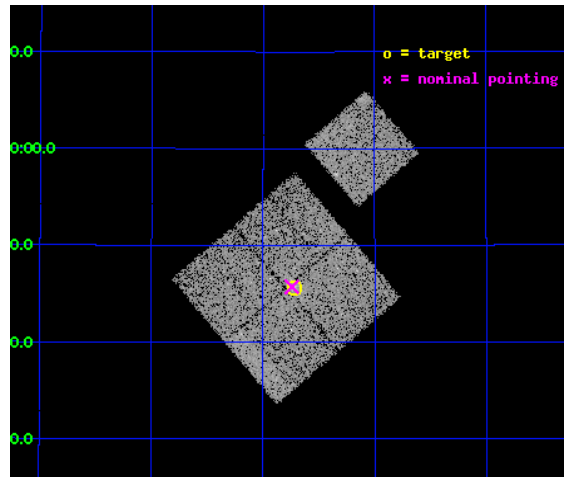
L2 Processing Date : Sep 26 2012

Contents

1	Front	2
2	OBI	3
2.1	OBI	3
2.1.1	Images	3
2.1.2	Bias	3
2.1.3	Parameters	4
2.1.4	Events	4
2.2	Compared Parameters	5
2.3	Aspect	6
2.4	Star Slots	9
2.4.1	Slot 3	9
2.4.2	Slot 4	10
2.4.3	Slot 5	11
2.4.4	Slot 6	12
2.4.5	Slot 7	13
2.5	FID Slots	14
2.5.1	Slot 0	14
2.5.2	Slot 1	15
2.5.3	Slot 2	16
A	Summary	17
A.1	Status	17
A.2	Comments	17

1 Front

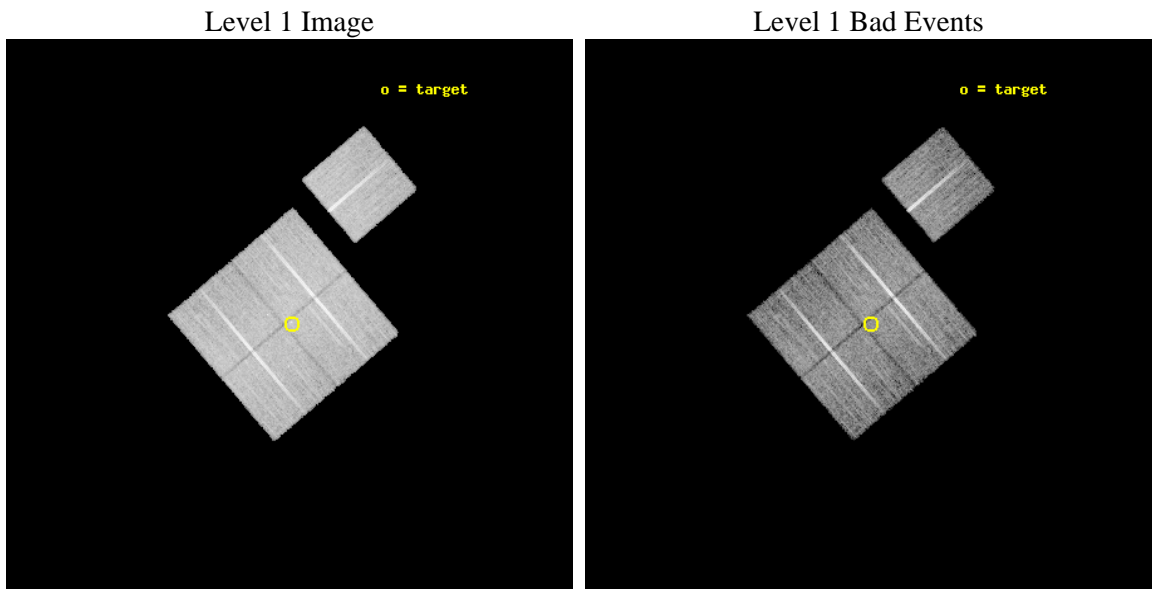
seq_num	800222	Sequence number
obs_id	3222	Observation id
title	THE ORIGIN OF X-RAY EMISSION FROM LOW VELOCITY DISPERSION GROUPS	P
observer	Prof Trevor Ponman	Principal investigator
object	NGC 3665 GROUP	Source name
dtcycle	0	
cycle	P	events from which exps? Prim/Second/Both
ra_targ	171.18	Observer's specified target RA [deg]
dec_targ	38.76	Observer's specified target Dec [deg]
ra_nom	171.18537855528	Nominal RA [deg]
dec_nom	38.762091284145	Nominal Dec [deg]
roll_nom	49.494706779176	Nominal Roll [deg]
revision	3	Processing version of data
ontime	18190.718044519	Sum of GTIs [s]
livetime	17953.042921456	Livetime [s]
ontime0	18196.999965012	Sum of GTIs [s]
ontime1	18196.999965012	Sum of GTIs [s]
ontime2	18196.999965012	Sum of GTIs [s]
ontime3	18190.718044519	Sum of GTIs [s]
ontime6	18196.999965012	Sum of GTIs [s]
l2events	41300	Number of level 2 events



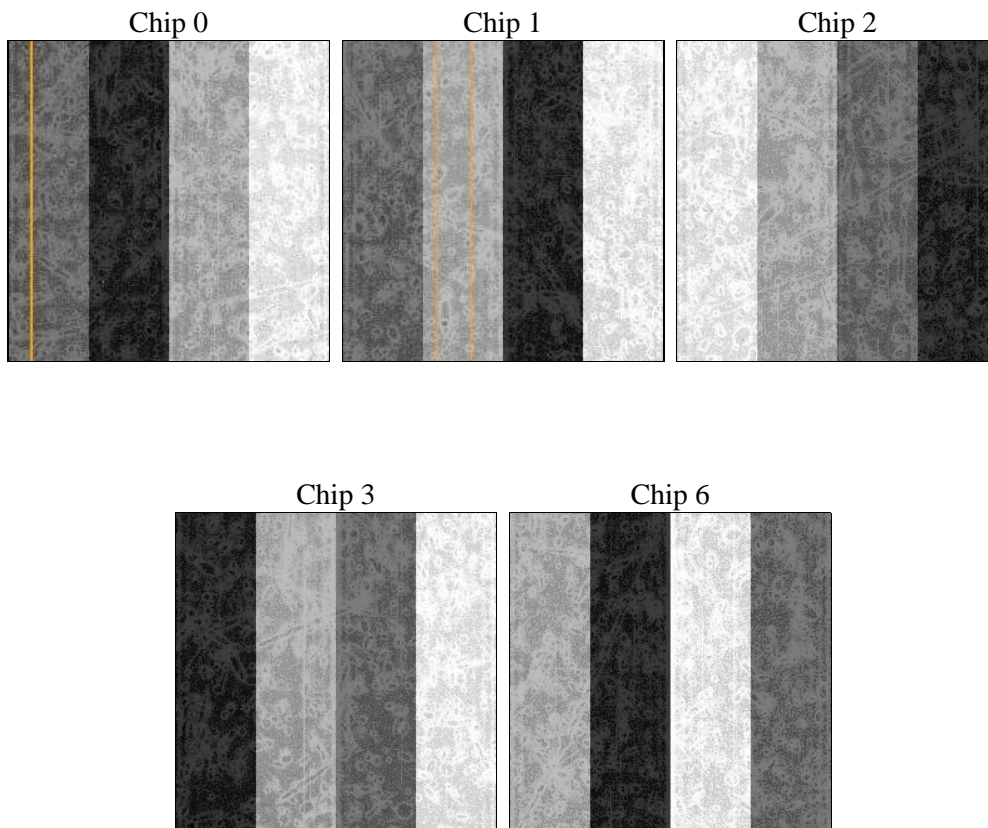
2 OBI

2.1 OBI

2.1.1 Images



2.1.2 Bias



2.1.3 Parameters

obi_num	0	Obi number	sched_exp_time	18000.000000	[s] Scheduled observation exposure time
ascdsver	8.4.5	Processing system revision	ontime	18190.718044519	Sum of GTIs [s]
caldbver	4.5.1.1	 	ontime0	18196.999965012	Sum of GTIs [s]
date	2012-09-27T00:14:02	Date and time of file creation	ontime1	18196.999965012	Sum of GTIs [s]
revision	3	Processing version of data	ontime2	18196.999965012	Sum of GTIs [s]
			ontime3	18190.718044519	Sum of GTIs [s]
			ontime6	18196.999965012	Sum of GTIs [s]
			l1events	508457	Number of level 1 events

2.1.4 Events

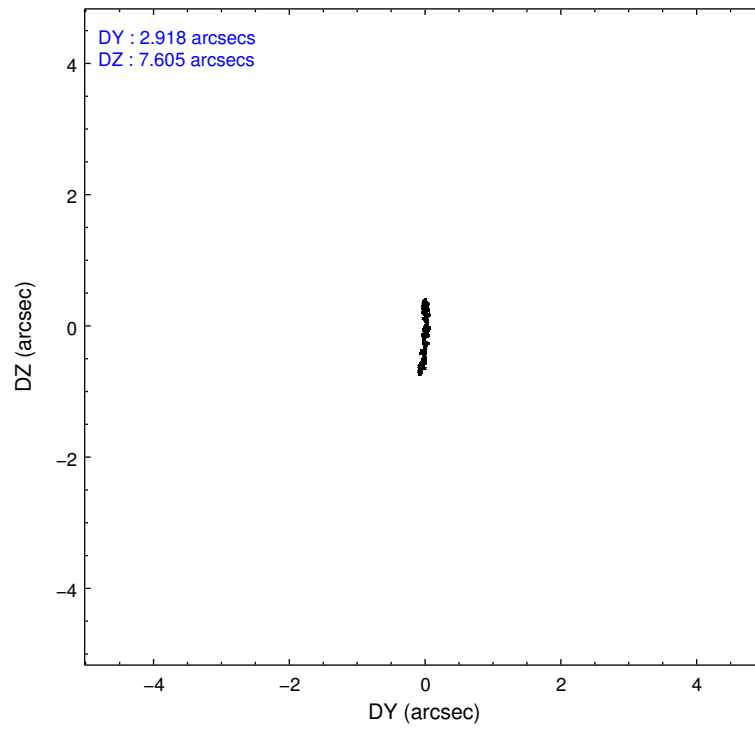
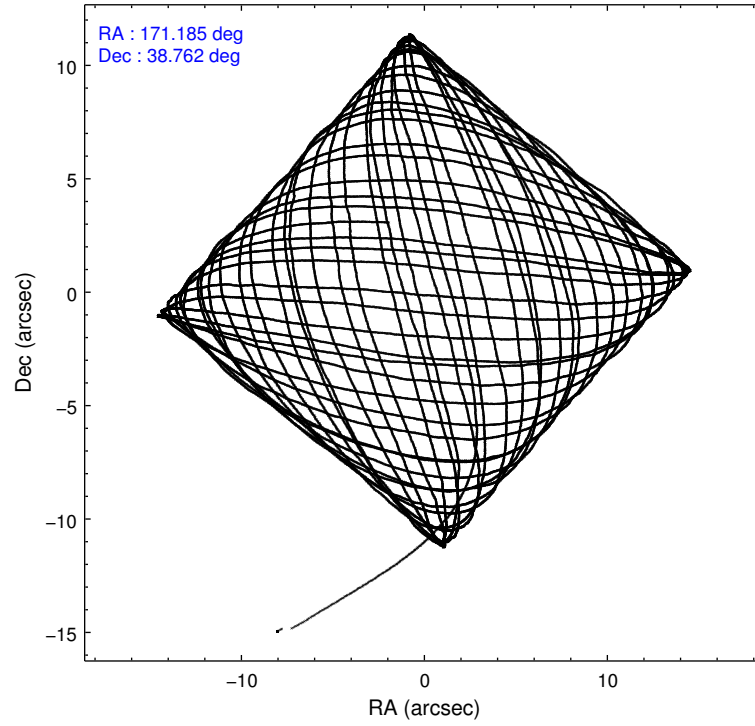
	ccd 0	ccd 1	ccd 2	ccd 3	ccd 6
level 1 events	96494	96938	109093	103777	102155
rejected events	86737	85726	99480	94247	92020
rejected %	89%	88%	91%	90%	90%

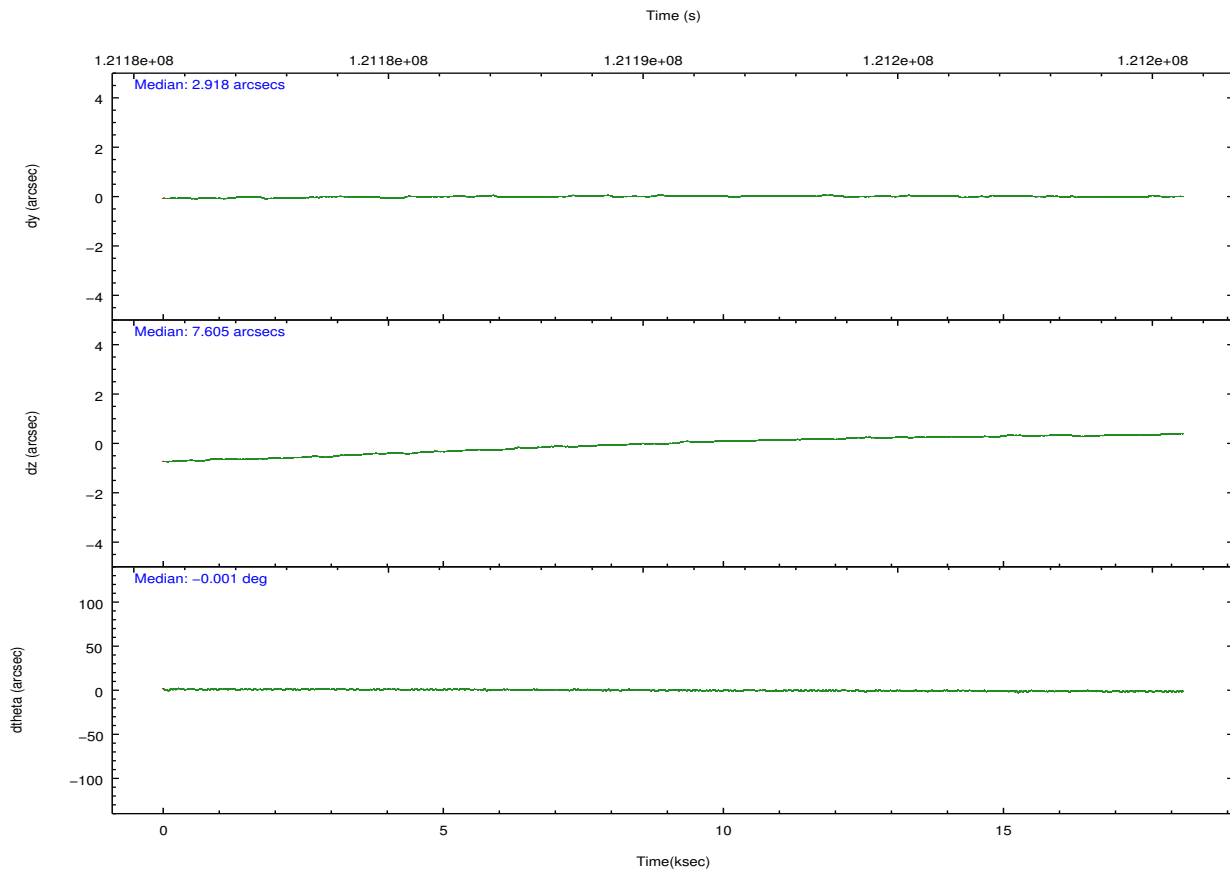
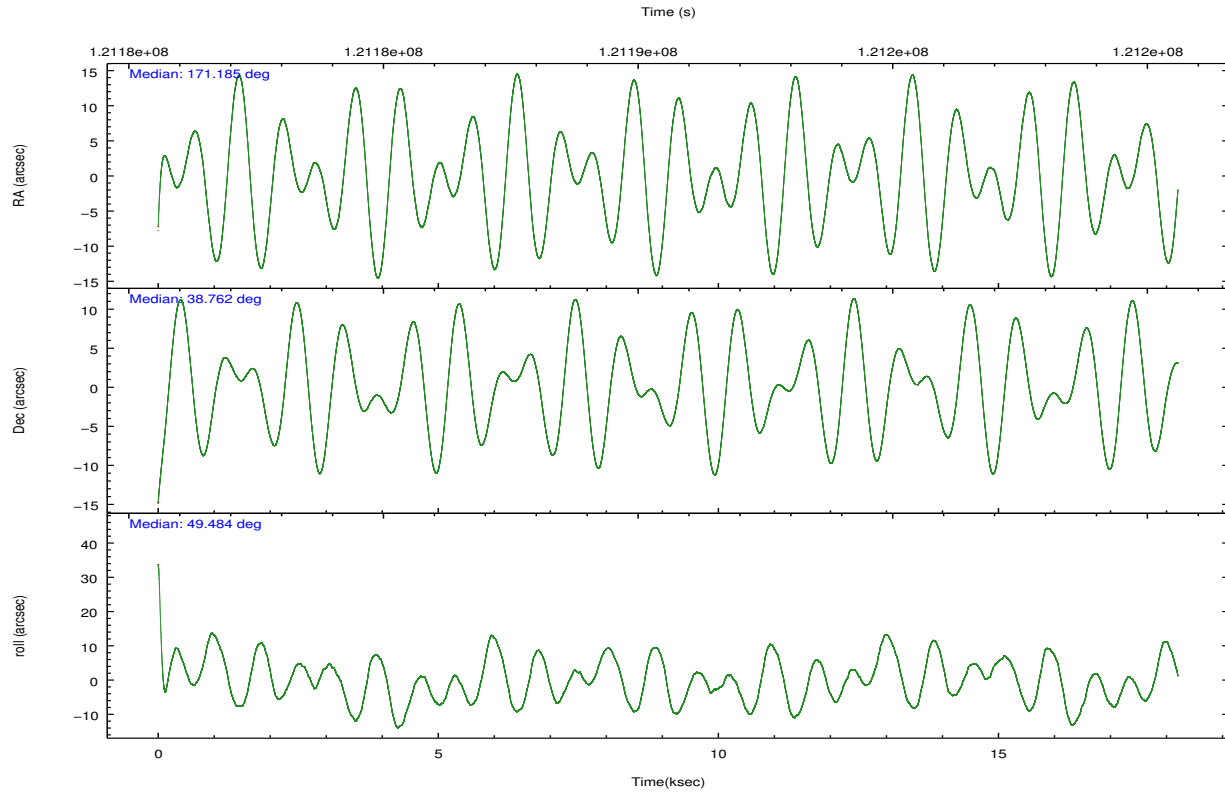
	ccd 0	ccd 1	ccd 2	ccd 3	ccd 6
grade 0 events	3567	4363	3639	3832	3751
	3%	4%	3%	3%	3%
grade 1 events	44	48	38	59	41
	0%	0%	0%	0%	0%
grade 2 events	2304	2323	2211	2000	2185
	2%	2%	2%	1%	2%
grade 3 events	1201	1333	1076	1059	1147
	1%	1%	0%	1%	1%
grade 4 events	1087	1321	1034	998	1156
	1%	1%	0%	0%	1%
grade 5 events	3228	3624	2966	3462	3726
	3%	3%	2%	3%	3%
grade 6 events	1816	2164	1848	1864	2133
	1%	2%	1%	1%	2%
grade 7 events	83247	81762	96281	90503	88016
	86%	84%	88%	87%	86%

2.2 Compared Parameters

Parameter	Planned	Actual	Parameter	Planned	Actual
Instrument	ACIS	ACIS	Obspar format version number	7	7
Detector	ACIS-01236	ACIS-01236	Obspar file type	PREDICTED	ACTUAL
Grating	NONE	NONE	Obspar update status	NONE	UPDATED
Data mode	VFAINT	VFAINT	Number of optional ACIS chips dropped	0	0
Observation mode	POINTING	POINTING	On-chip summing requested	N	N
[deg] Pointing RA	171.179058	171.1853785552753	Subarray requested	NONE	NONE
[deg] Pointing Dec	38.735129	38.76209128414458	Alternating exposures requested	N	N
[deg] Pointing Roll	49.289955	49.49470677917612	[s] Primary exposure time	0.000000	3.1
[mm] SIM focus pos	-0.782348	-0.7809083437167272			
[mm] SIM defocus	0	0.001439871863259334			
[mm] SIM translation stage pos	-233.592463	-233.5874344608287			
[mm] SIM translation stage offset	0	-0.005018542100998502			
[s] Observation start time (MET)	121181691.184000	121180476.07229			
Observation start date	2001-11-03T13:33:47	2001-11-03T13:14:36			
[s] Observation end time (MET)	121199691.184000	121200302.13558			
Observation end date	2001-11-03T18:33:47	2001-11-03T18:45:02			
Read mode	TIMED	TIMED			

2.3 Aspect



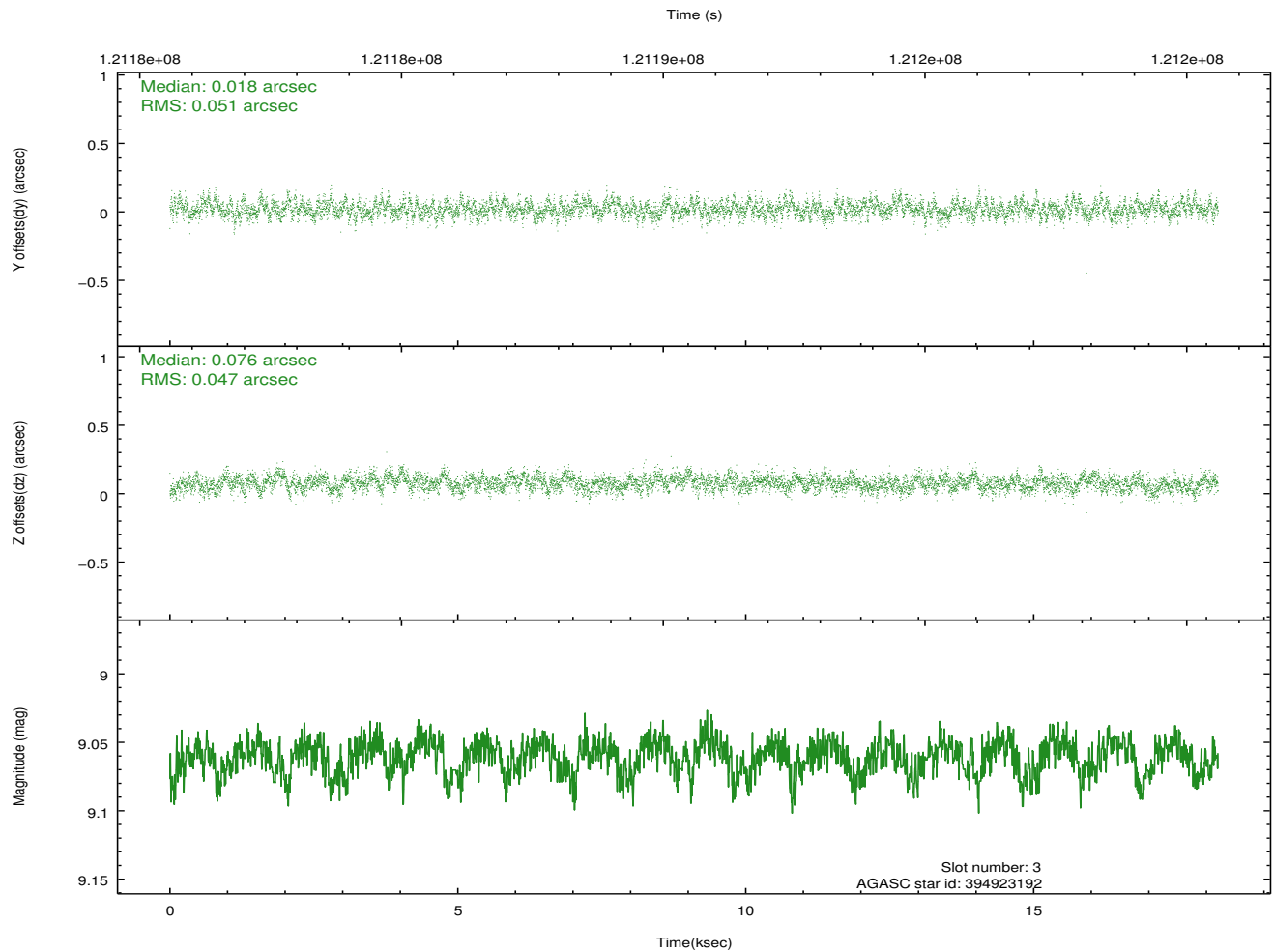
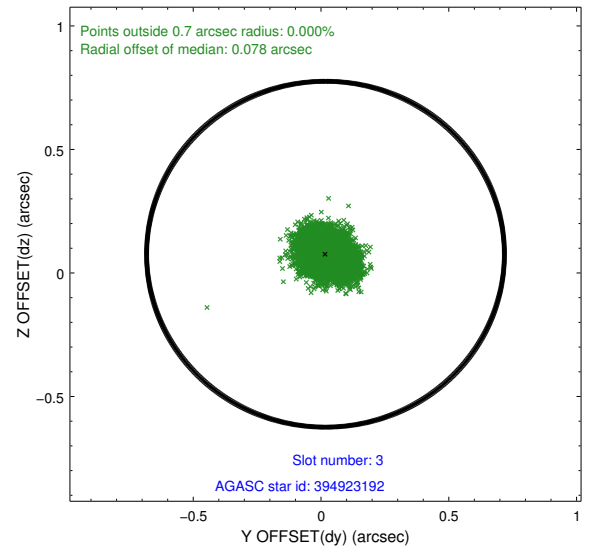
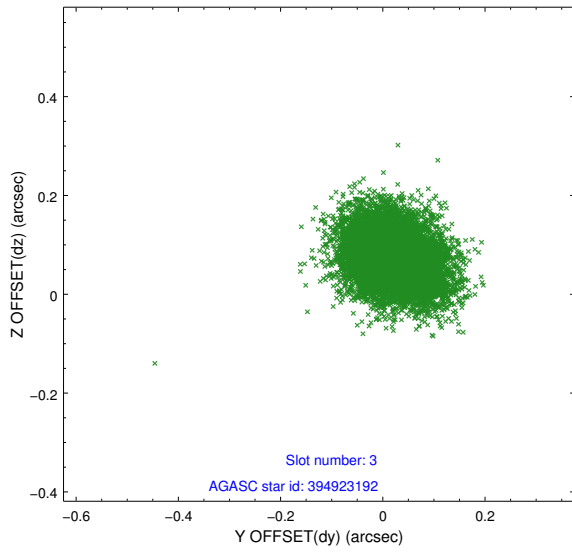


Slot Statistics

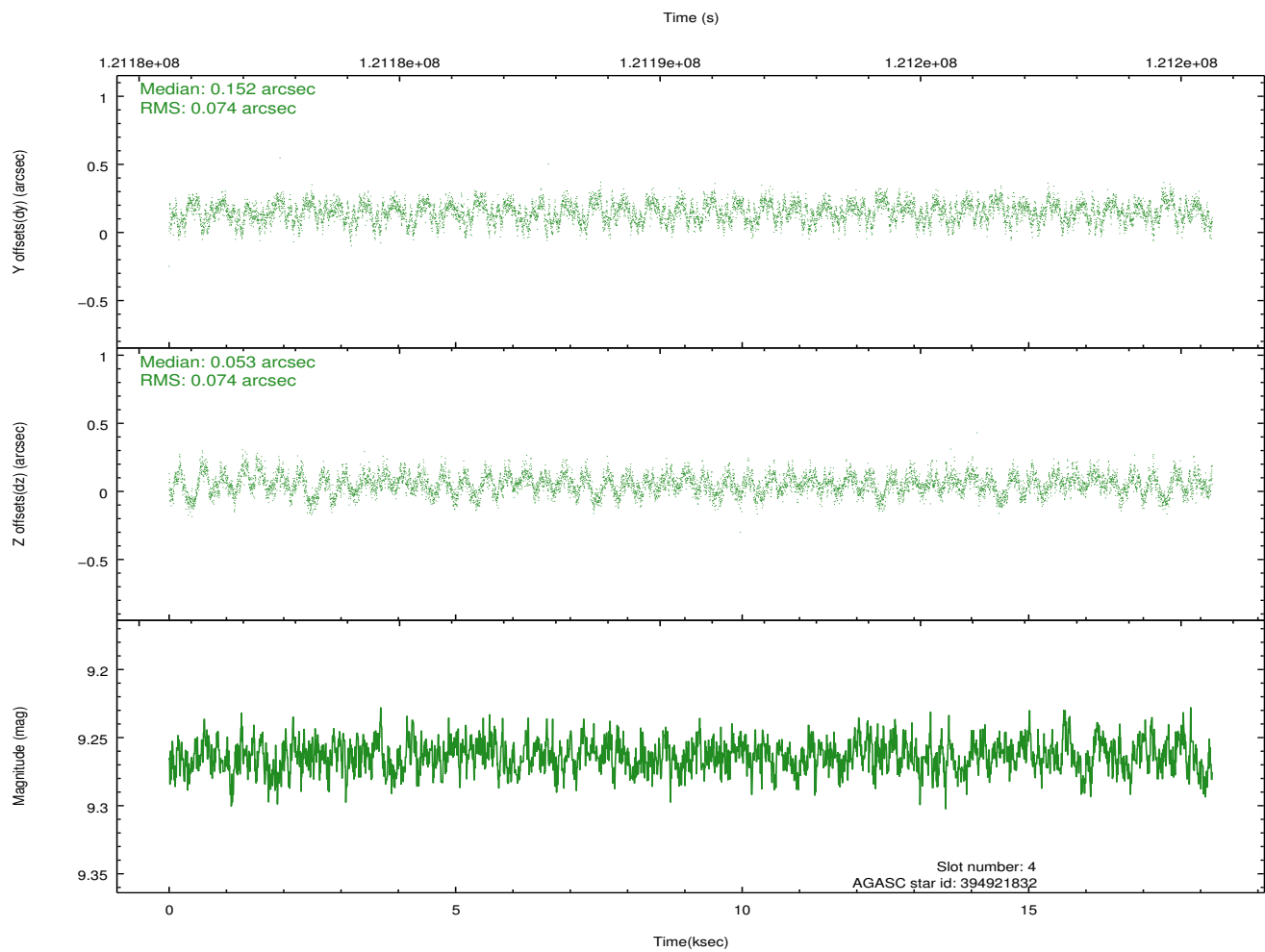
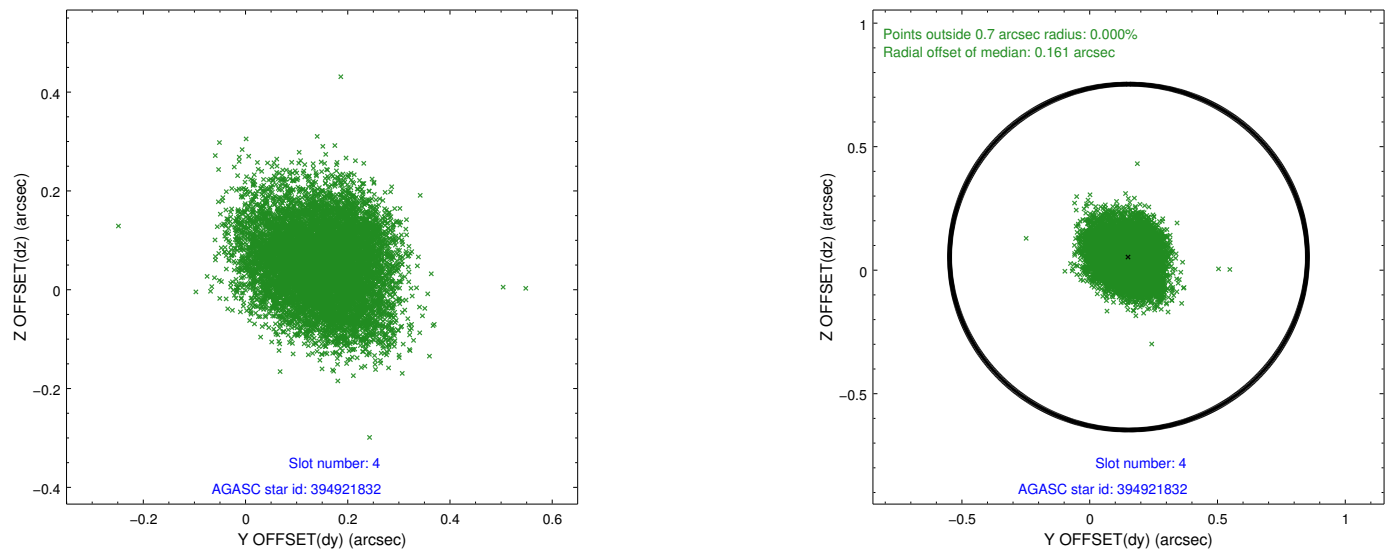
slot	status	id	mag	n_pts	med_dy	med_dz	dr1	dr2	ra	dec	mean_y	mean_z
0	FID	ACIS-I-1	7.24	4441	-0.002	0.039	0.017	0.026	0.000000	0.000000	936.86	-830.92
1	FID	ACIS-I-5	7.24	4439	-0.051	0.054	0.007	0.012	0.000000	0.000000	-1811.14	1066.51
2	FID	ACIS-I-6	7.26	4439	-0.037	-0.023	0.013	0.022	0.000000	0.000000	402.18	1711.16
3	GUIDE	394923192	9.06	8878	0.018	0.076	0.073	0.121	170.905251	38.693700	-613.39	486.80
4	GUIDE	394921832	9.26	8880	0.152	0.053	0.113	0.176	170.323439	38.532462	-2115.59	1357.82
5	GUIDE	394921536	9.53	8877	0.063	-0.081	0.130	0.212	170.069169	38.648391	-2257.63	2173.93
6	GUIDE	394931504	9.28	8878	-0.079	0.205	0.080	0.131	171.750013	38.578634	625.47	-1581.78
7	GUIDE	394922424	9.57	8855	-0.166	-0.251	0.113	0.187	170.568765	39.208009	184.53	2404.26

2.4 Star Slots

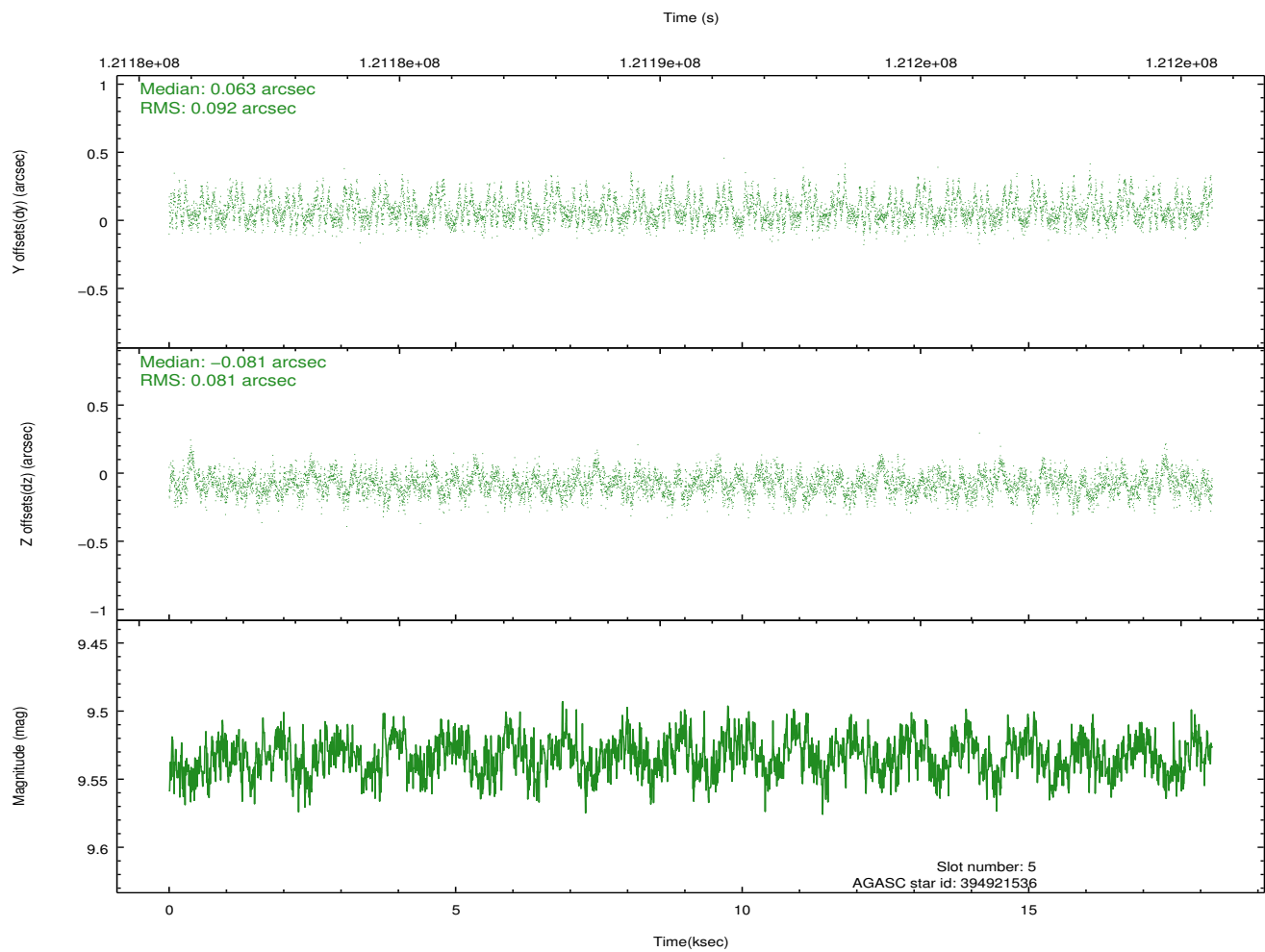
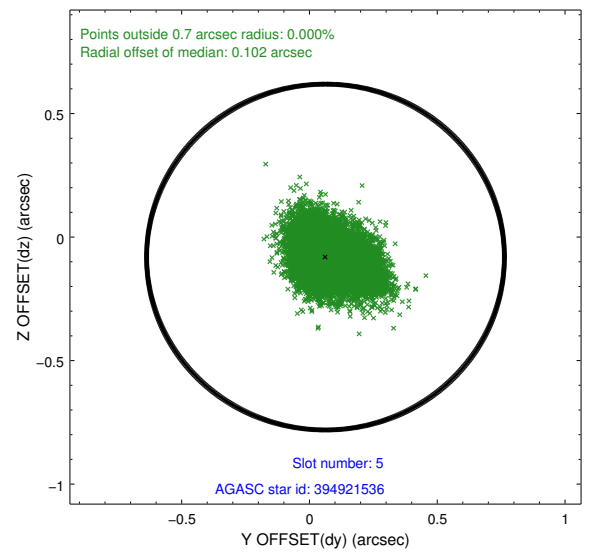
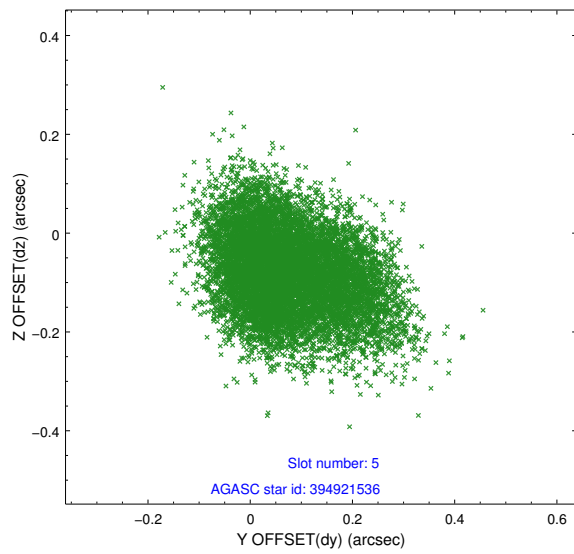
2.4.1 Slot 3



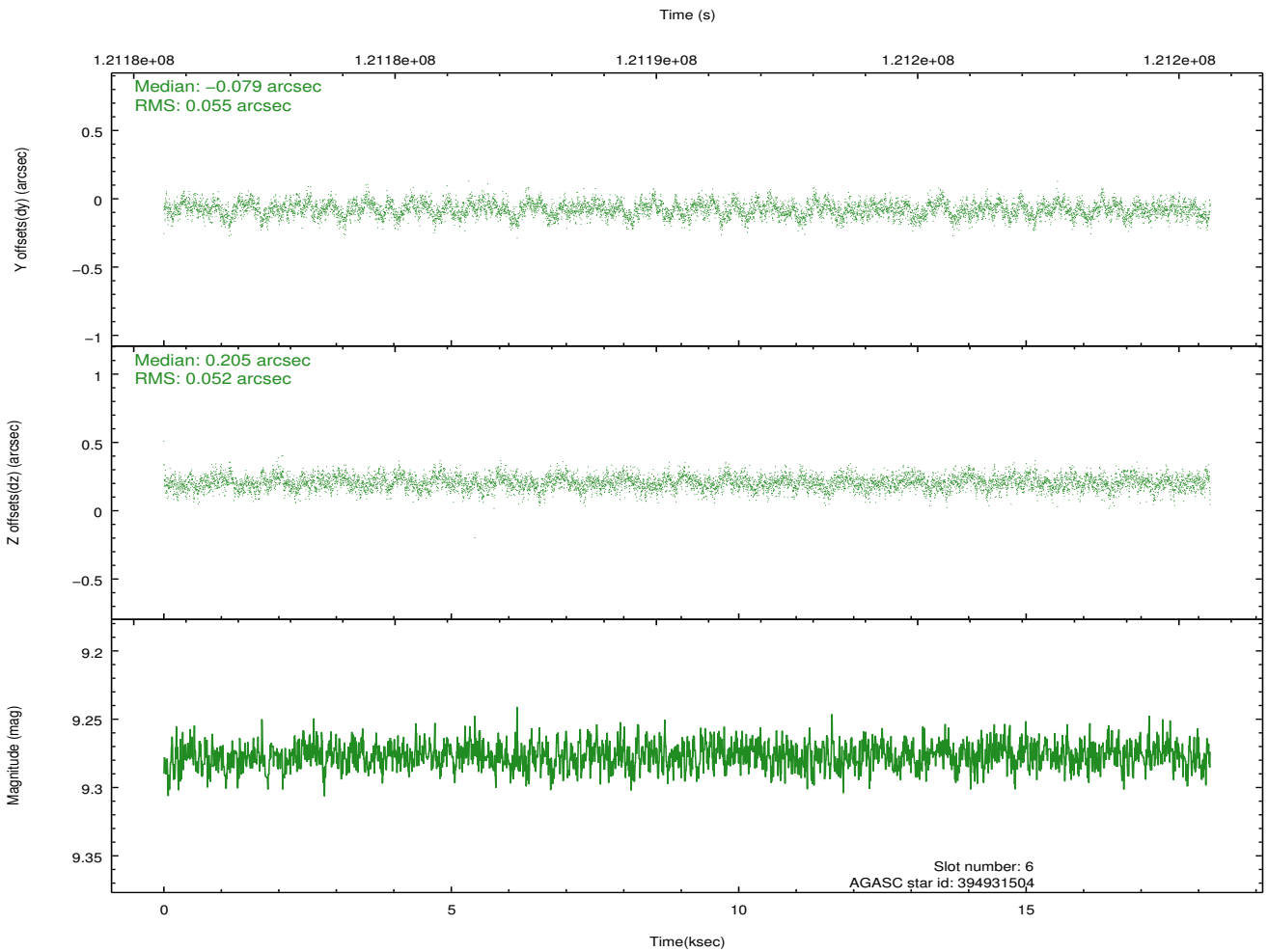
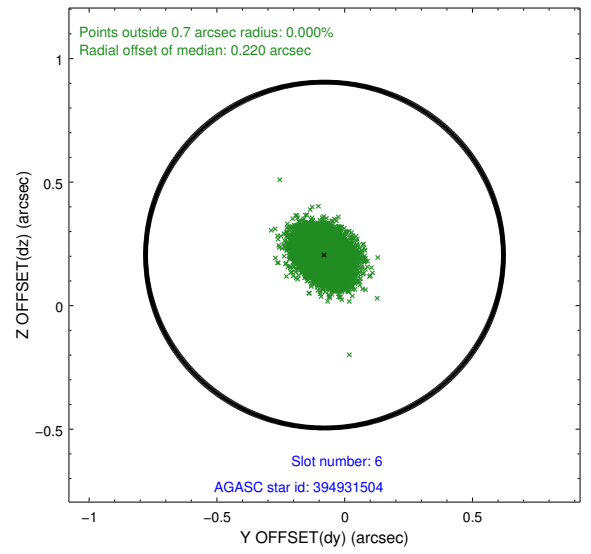
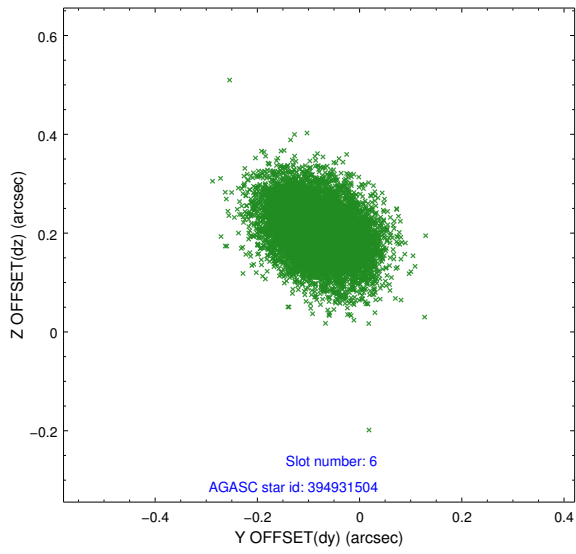
2.4.2 Slot 4



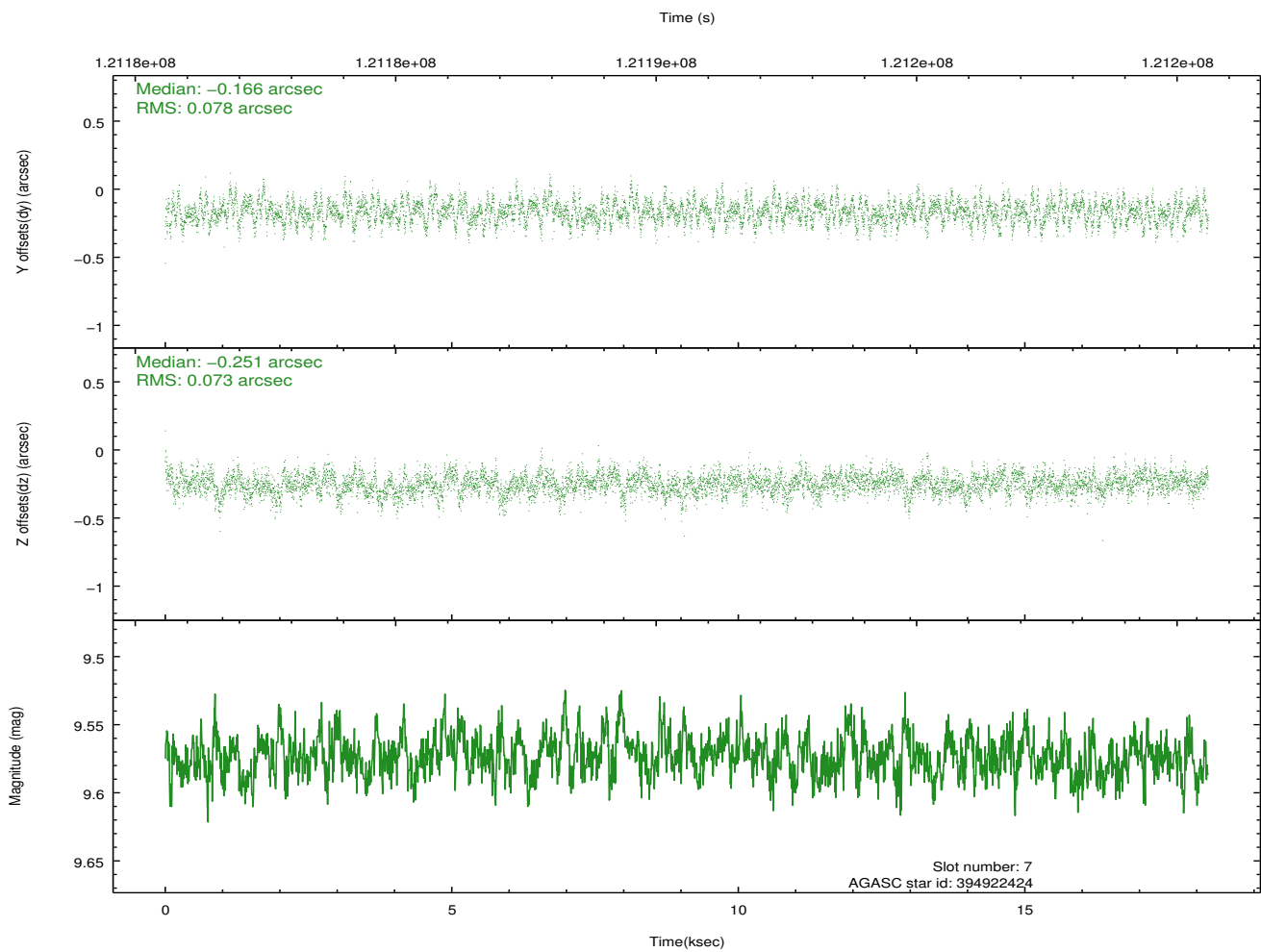
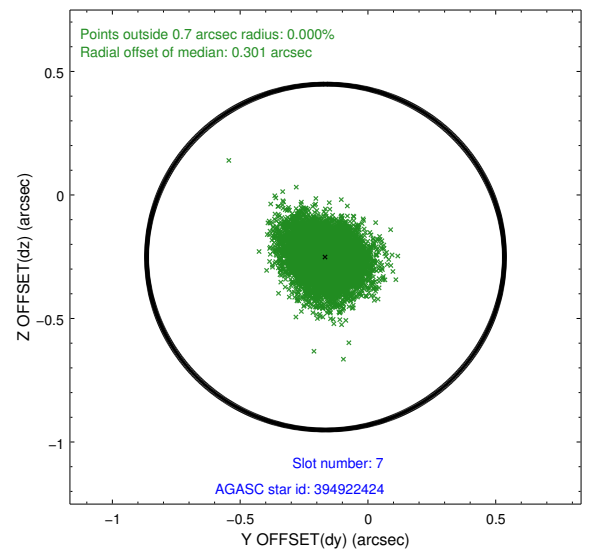
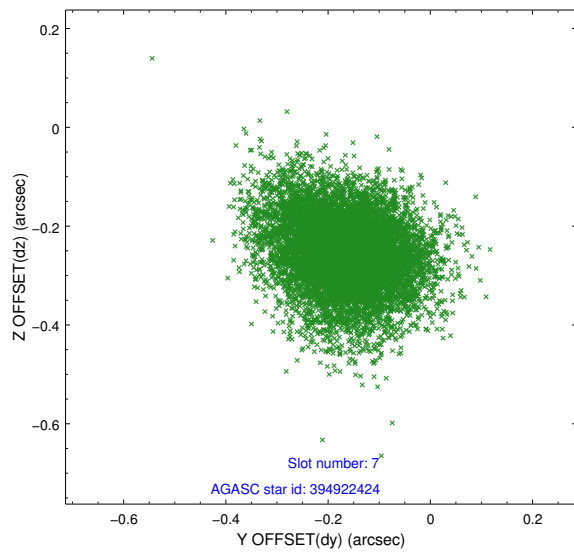
2.4.3 Slot 5



2.4.4 Slot 6

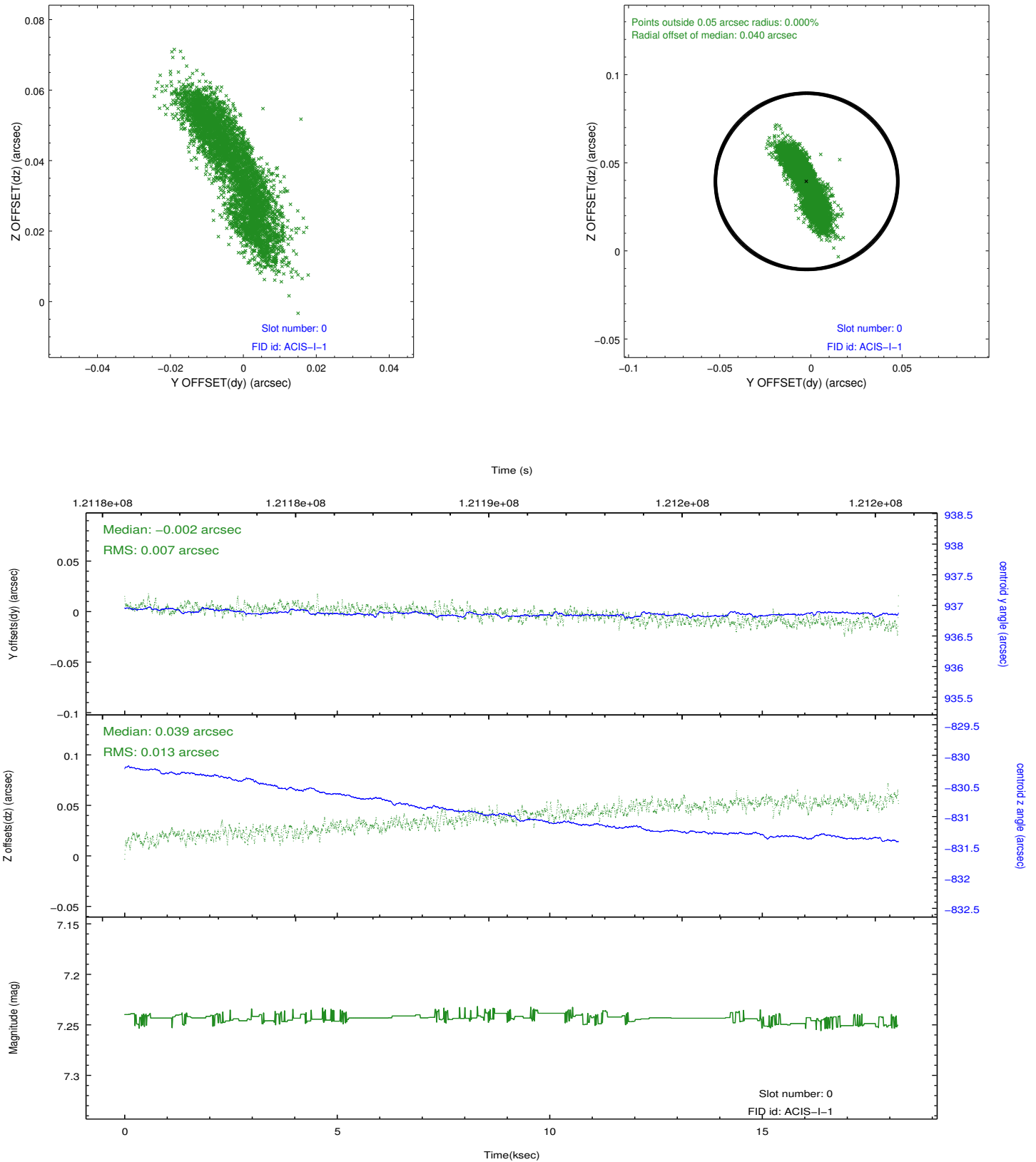


2.4.5 Slot 7

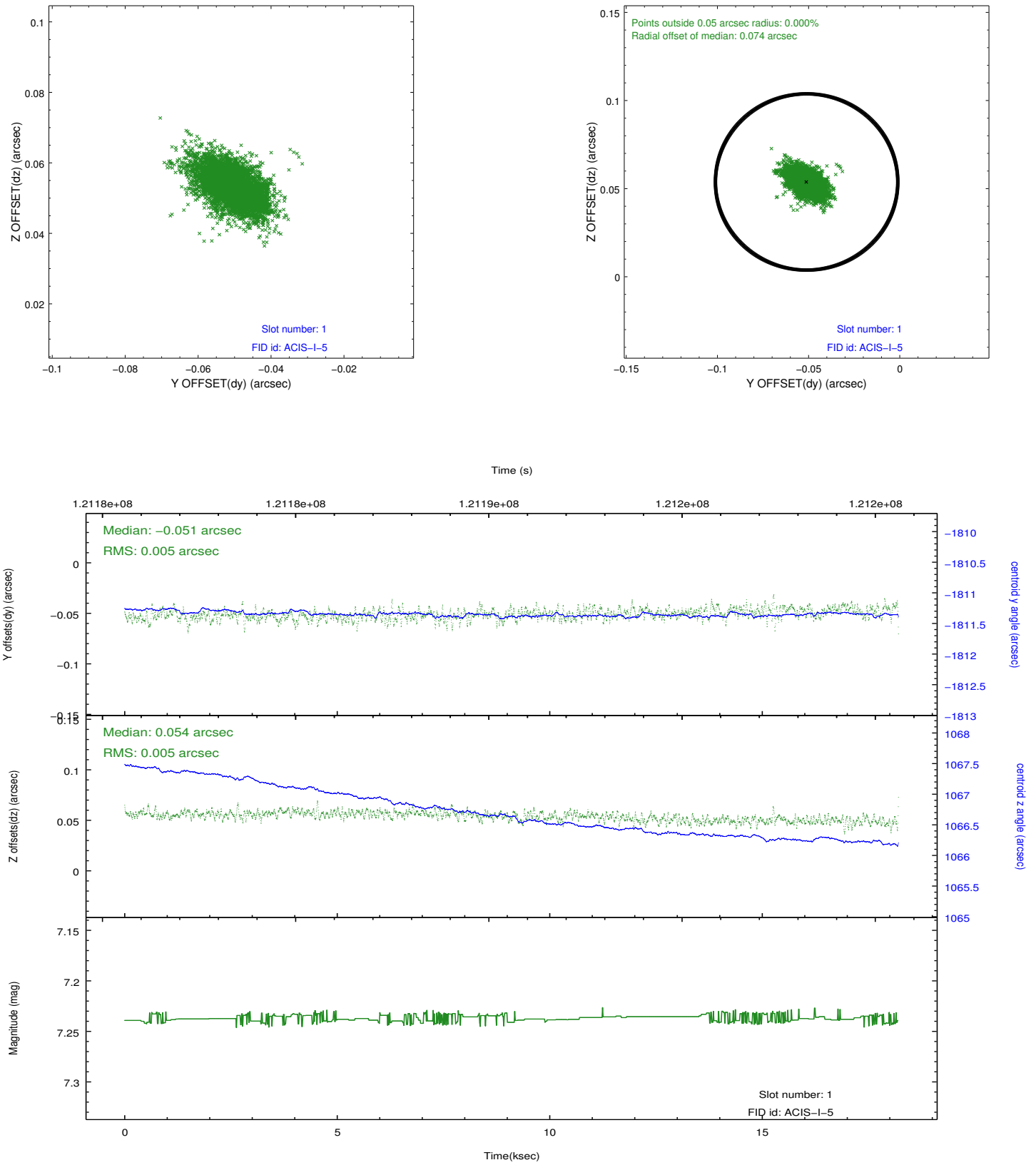


2.5 FID Slots

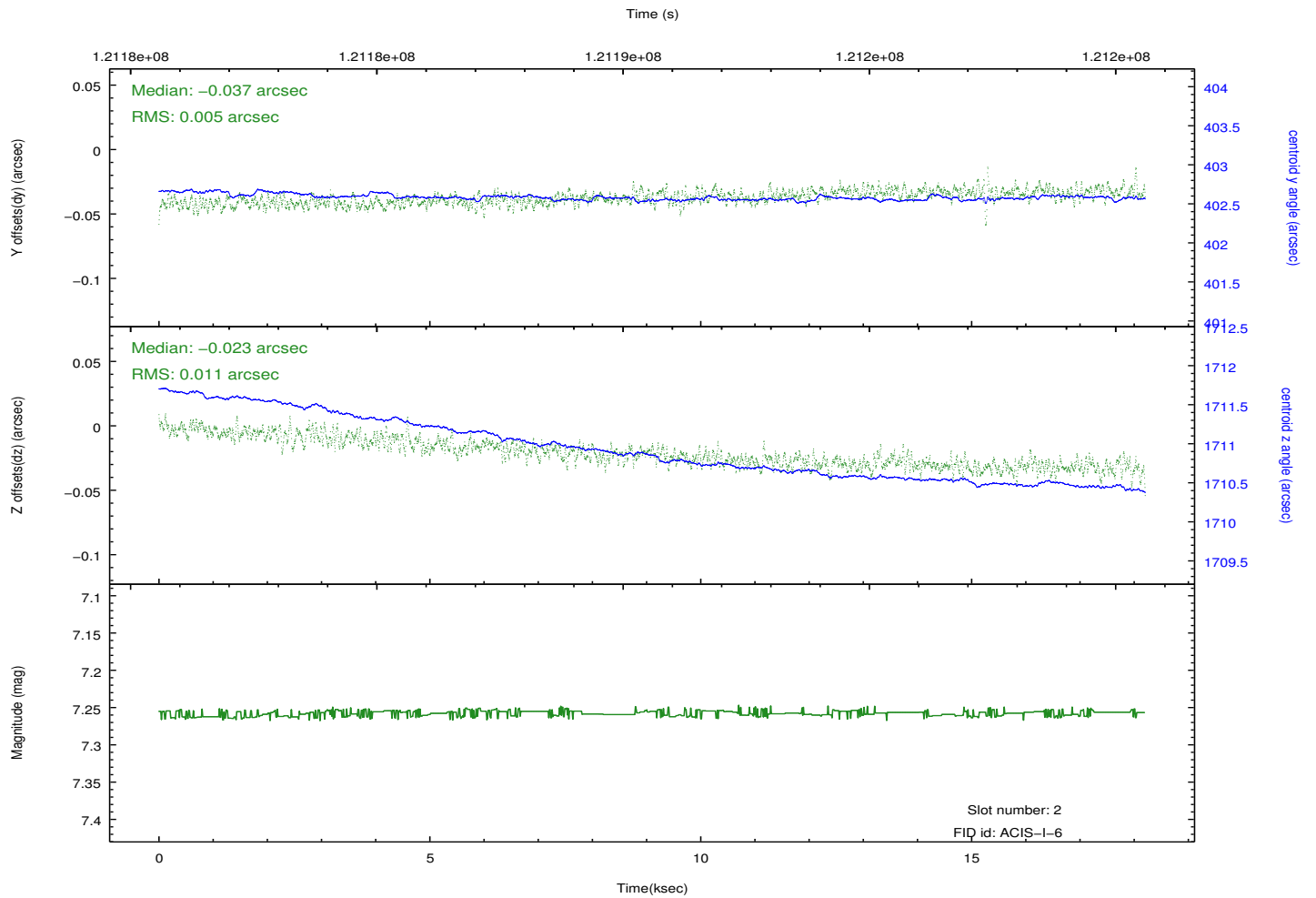
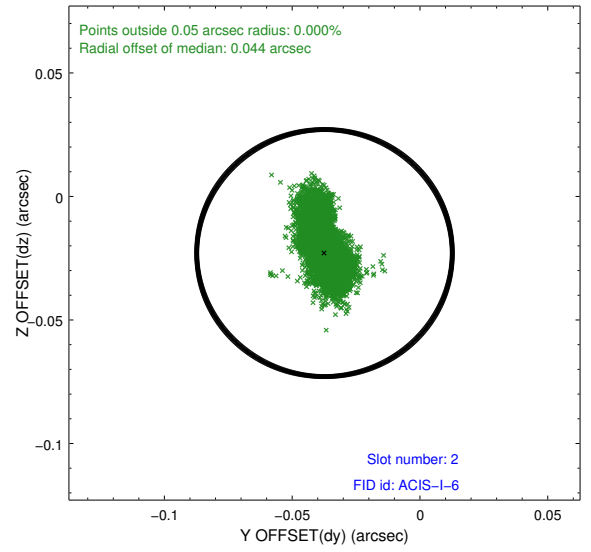
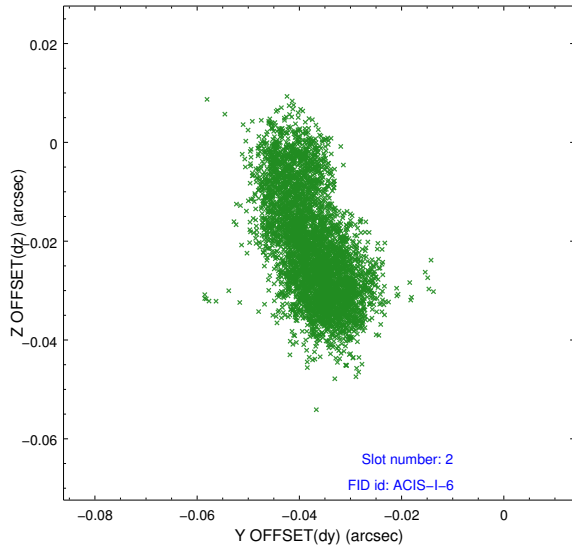
2.5.1 Slot 0



2.5.2 Slot 1



2.5.3 Slot 2



A Summary

A.1 Status

V&V Scientist	Beth Sundheim
V&V Date (YYYY-MM-DD)	2012.09.28
V&V Edition	1
V&V Disposition and Status	OK
V&V Charge Time	18.19

A.2 Comments