

V&V Reference Report

L2 ASCDS Version : 8.4.5

Observation 3272 - L2 Version 3
Chandra X-Ray Center

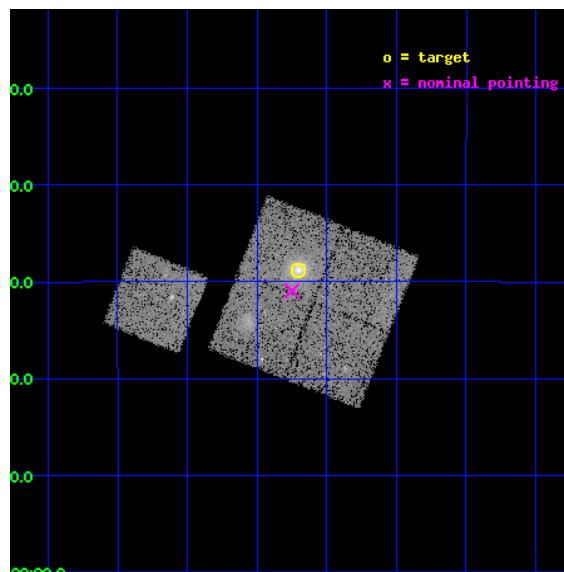
L2 Processing Date : Oct 2 2012

Contents

1	Front	2
2	OBI	3
2.1	OBI	3
2.1.1	Images	3
2.1.2	Bias	3
2.1.3	Parameters	4
2.1.4	Events	4
2.2	Compared Parameters	5
2.3	Aspect	6
2.4	Star Slots	9
2.4.1	Slot 3	9
2.4.2	Slot 4	10
2.4.3	Slot 5	11
2.4.4	Slot 6	12
2.4.5	Slot 7	13
2.5	FID Slots	14
2.5.1	Slot 0	14
2.5.2	Slot 1	15
2.5.3	Slot 2	16
A	Summary	17
A.1	Status	17
A.2	Comments	17

1 Front

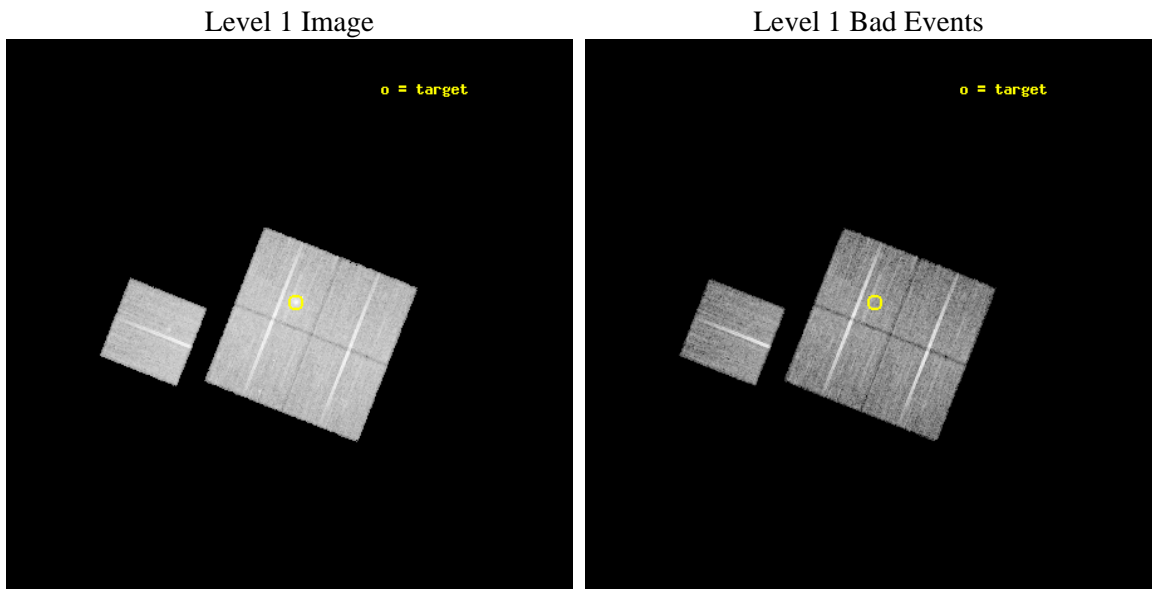
seq_num	800272	Sequence number
obs_id	3272	Observation id
title	MACS: THE X-RAY PROPERTIES OF THE MOST MASSIVE GALAXY CLUSTERS AT Z>0.3	Proposal title
observer	Dr. Harald Ebeling	Principal investigator
object	MACSJ0520.7-1328	Source name
dtcycle	0	
cycle	P	events from which exps? Prim/Second/Both
ra_targ	80.175	Observer's specified target RA [deg]
dec_targ	-13.48	Observer's specified target Dec [deg]
ra_nom	80.187373629686	Nominal RA [deg]
dec_nom	-13.515713214065	Nominal Dec [deg]
roll_nom	291.5783543128	Nominal Roll [deg]
revision	3	Processing version of data
ontime	19486.599962533	Sum of GTIs [s]
livetime	19231.993188196	Livetime [s]
ontime0	19486.599962533	Sum of GTIs [s]
ontime1	19486.599962533	Sum of GTIs [s]
ontime2	19483.458992288	Sum of GTIs [s]
ontime3	19486.599962533	Sum of GTIs [s]
ontime6	19486.599962533	Sum of GTIs [s]
l2events	54239	Number of level 2 events



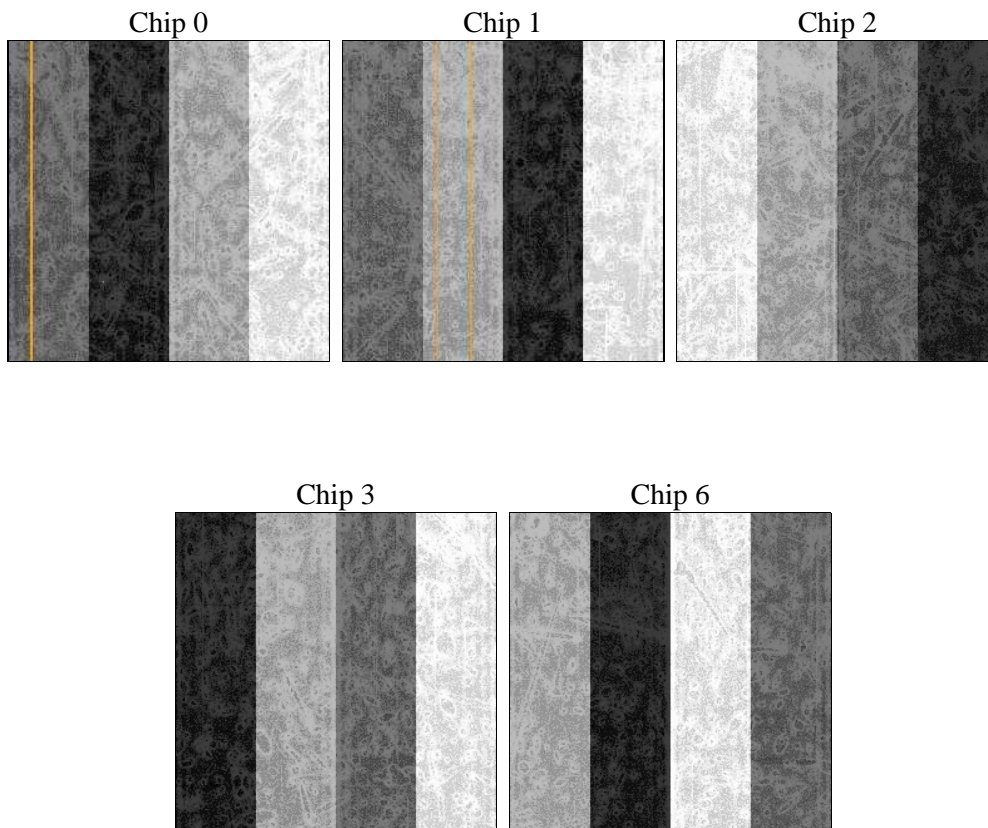
2 OBI

2.1 OBI

2.1.1 Images



2.1.2 Bias



2.1.3 Parameters

obi_num	0	Obi number	sched_exp_time	19715.782000	[s] Scheduled observation exposure time
ascdsver	8.4.5	Processing system revision	ontime	19486.599962533	Sum of GTIs [s]
caldbver	4.5.2	 	ontime0	19486.599962533	Sum of GTIs [s]
date	2012-10-02T05:55:53	Date and time of file creation	ontime1	19486.599962533	Sum of GTIs [s]
revision	3	Processing version of data	ontime2	19483.458992288	Sum of GTIs [s]
			ontime3	19486.599962533	Sum of GTIs [s]
			ontime6	19486.599962533	Sum of GTIs [s]
			l1events	558937	Number of level 1 events

2.1.4 Events

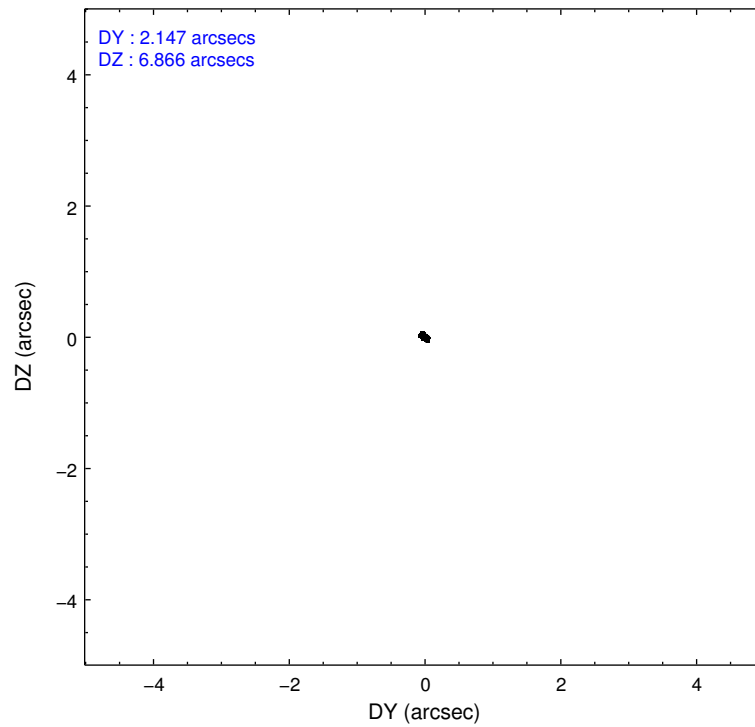
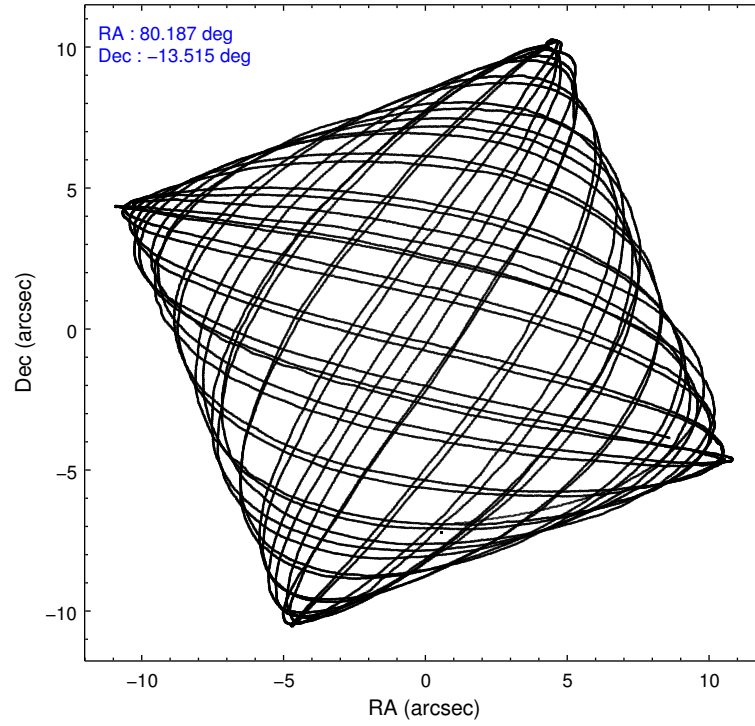
	ccd 0	ccd 1	ccd 2	ccd 3	ccd 6
level 1 events	104821	103417	117622	120021	113056
rejected events	93751	91358	105029	102988	101562
rejected %	89%	88%	89%	85%	89%

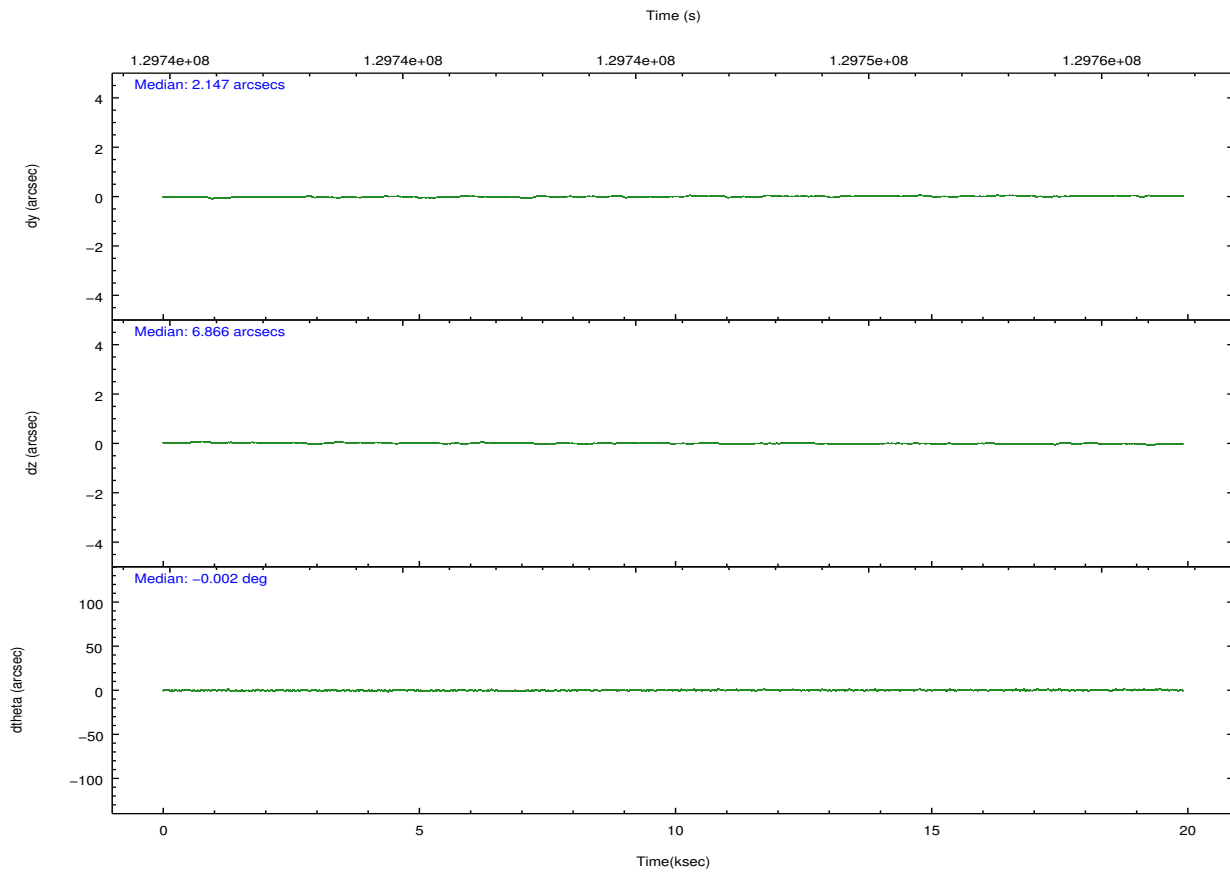
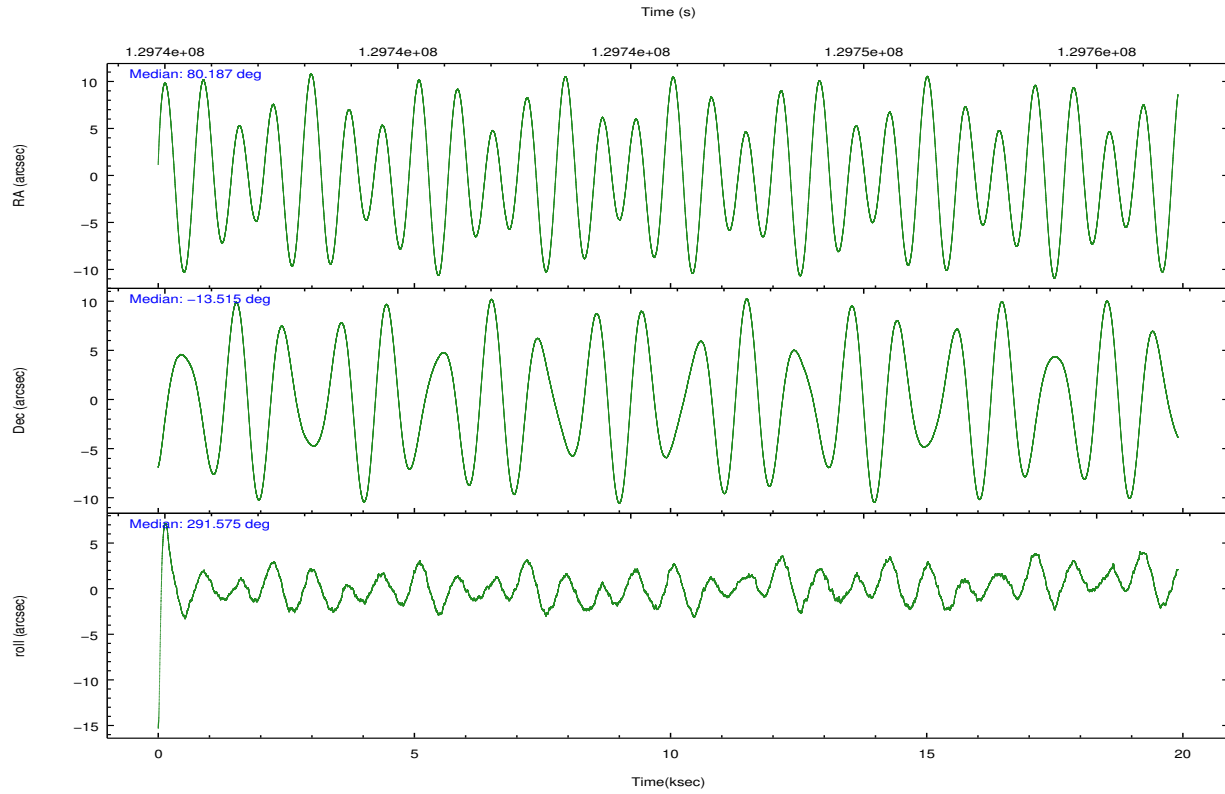
	ccd 0	ccd 1	ccd 2	ccd 3	ccd 6
grade 0 events	3959	4445	5399	9237	4401
	3%	4%	4%	7%	3%
grade 1 events	52	41	48	73	44
	0%	0%	0%	0%	0%
grade 2 events	2596	2407	2705	2858	2319
	2%	2%	2%	2%	2%
grade 3 events	1261	1366	1231	1384	1243
	1%	1%	1%	1%	1%
grade 4 events	1177	1420	1195	1351	1244
	1%	1%	1%	1%	1%
grade 5 events	3708	3996	3456	4128	4071
	3%	3%	2%	3%	3%
grade 6 events	2080	2423	2069	2211	2293
	1%	2%	1%	1%	2%
grade 7 events	89988	87319	101519	98779	97441
	85%	84%	86%	82%	86%

2.2 Compared Parameters

Parameter	Planned	Actual	Parameter	Planned	Actual
Instrument	ACIS	ACIS	Obspar format version number	7	7
Detector	ACIS-01236	ACIS-01236	Obspar file type	PREDICTED	ACTUAL
Grating	NONE	NONE	Obspar update status	NONE	UPDATED
Data mode	VFAINT	VFAINT	Number of optional ACIS chips dropped	0	0
Observation mode	POINTING	POINTING	On-chip summing requested	N	N
[deg] Pointing RA	80.165240	80.18737362968611	Subarray requested	NONE	NONE
[deg] Pointing Dec	-13.498750	-13.51571321406451	Alternating exposures requested	N	N
[deg] Pointing Roll	291.364505	291.5783543128006	[s] Primary exposure time	0.000000	3.1
[mm] SIM focus pos	-0.782348	-0.7809083437167272			
[mm] SIM defocus	0	0.001439871863259334			
[mm] SIM translation stage pos	-227.742463	-227.734108438797			
[mm] SIM translation stage offset	-5.85	-5.858344564132665			
[s] Observation start time (MET)	129736035.184000	129735357.55296			
Observation start date	2002-02-10T13:46:11	2002-02-10T13:35:57			
[s] Observation end time (MET)	129755751.184000	129756065.62879			
Observation end date	2002-02-10T19:14:47	2002-02-10T19:21:05			
Read mode	TIMED	TIMED			

2.3 Aspect



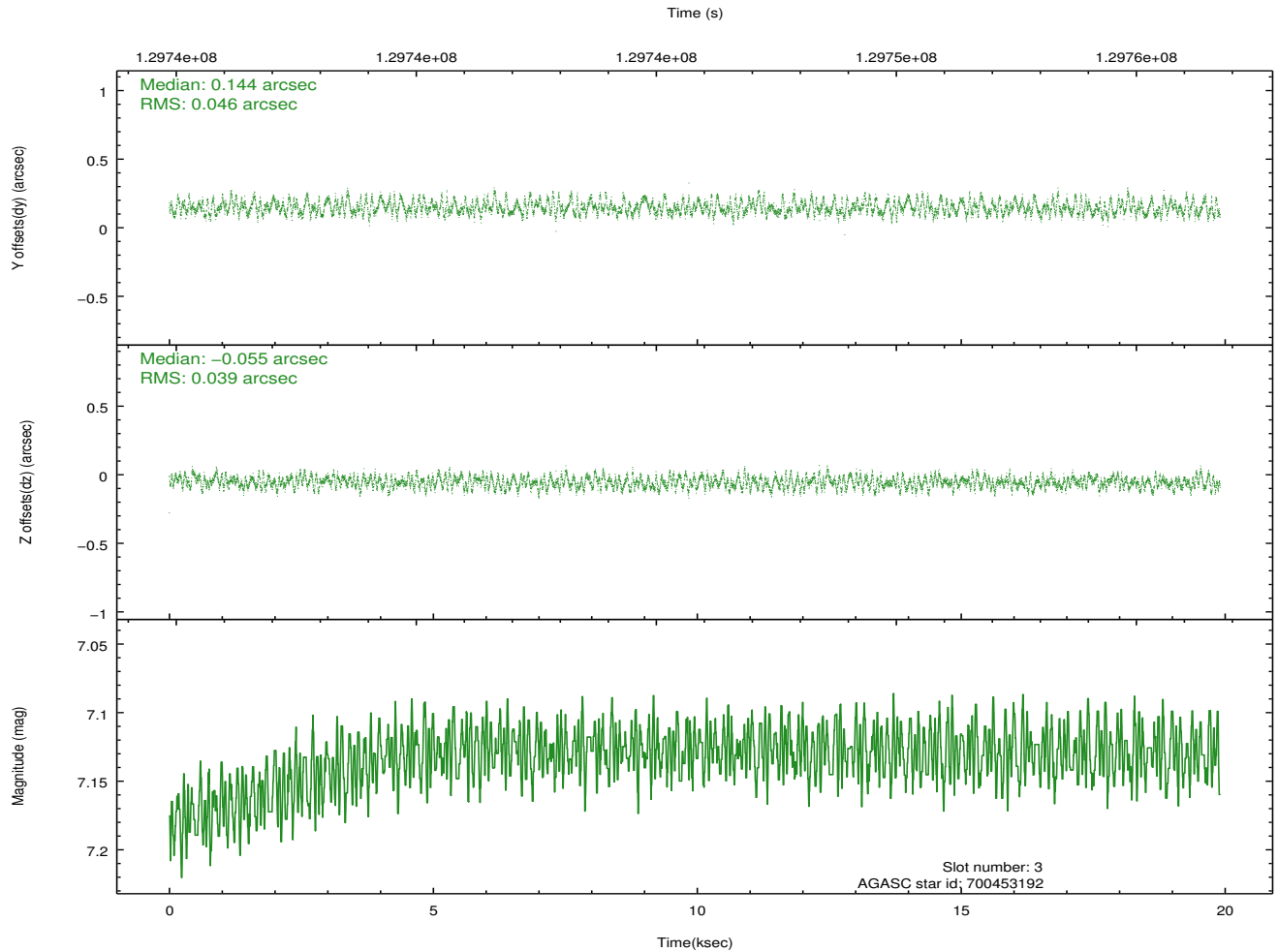
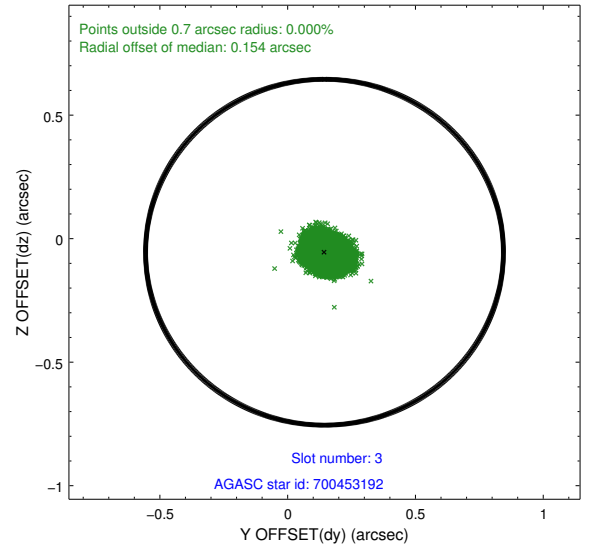
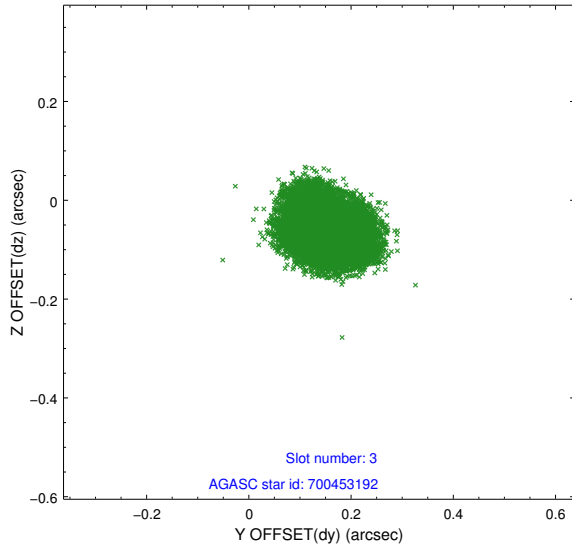


Slot Statistics

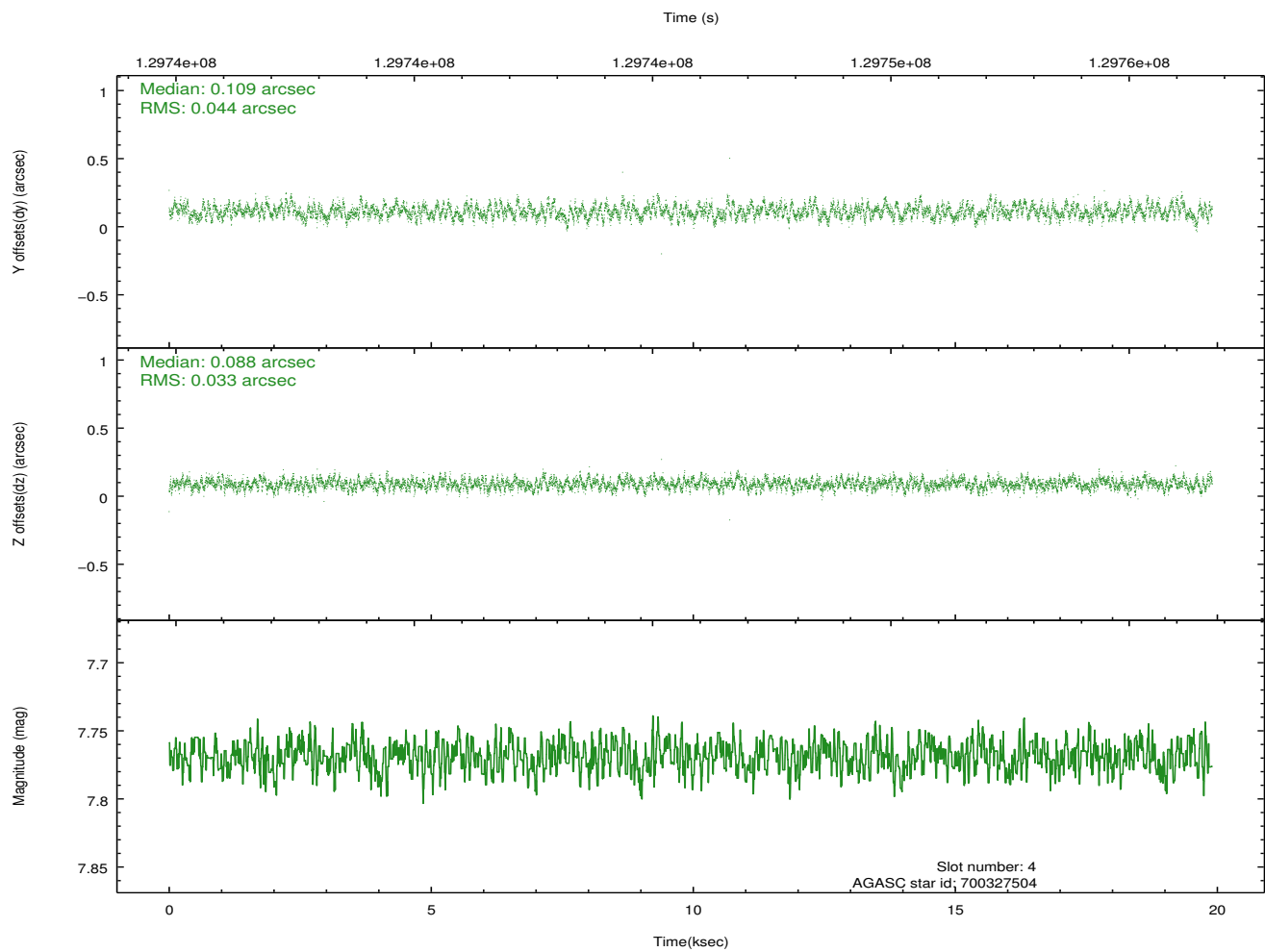
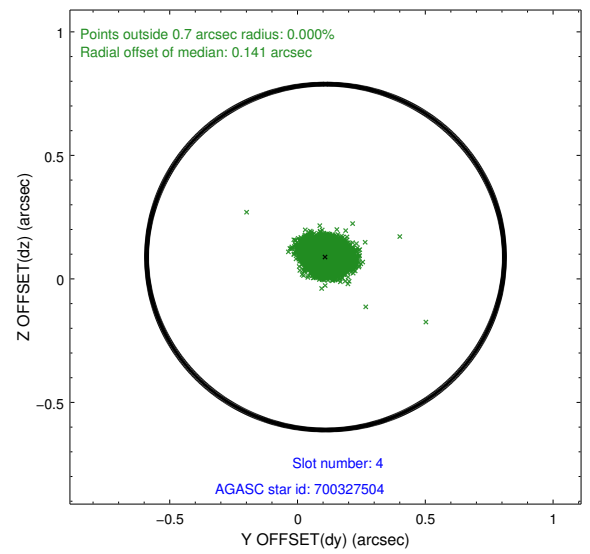
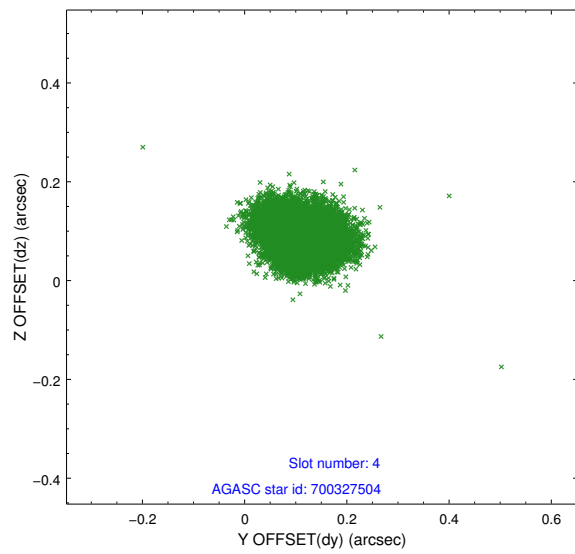
slot	status	id	mag	n_pts	med_dy	med_dz	dr1	dr2	ra	dec	mean_y	mean_z
0	FID	ACIS-I-1	7.24	4855	0.024	-0.132	0.006	0.011	0.000000	0.000000	937.59	-950.62
1	FID	ACIS-I-3	7.43	4855	-0.019	0.186	0.007	0.012	0.000000	0.000000	55.16	-1083.73
2	FID	ACIS-I-5	7.23	4855	-0.096	0.018	0.005	0.011	0.000000	0.000000	-1810.73	946.85
3	GUIDE	700453192	7.13	9709	0.144	-0.055	0.066	0.099	80.462464	-13.755686	1241.60	630.75
4	GUIDE	700327504	7.77	9708	0.109	0.088	0.059	0.094	80.303996	-14.152451	2369.25	-406.02
5	GUIDE	700326488	8.28	9709	-0.016	-0.013	0.058	0.097	79.663003	-13.799130	370.31	-2029.84
6	GUIDE	699801976	7.41	9705	-0.129	-0.125	0.051	0.081	80.147757	-13.112337	-1317.04	449.24
7	GUIDE	699799824	8.41	9702	-0.118	0.104	0.059	0.092	79.817230	-12.975746	-2196.70	-451.36

2.4 Star Slots

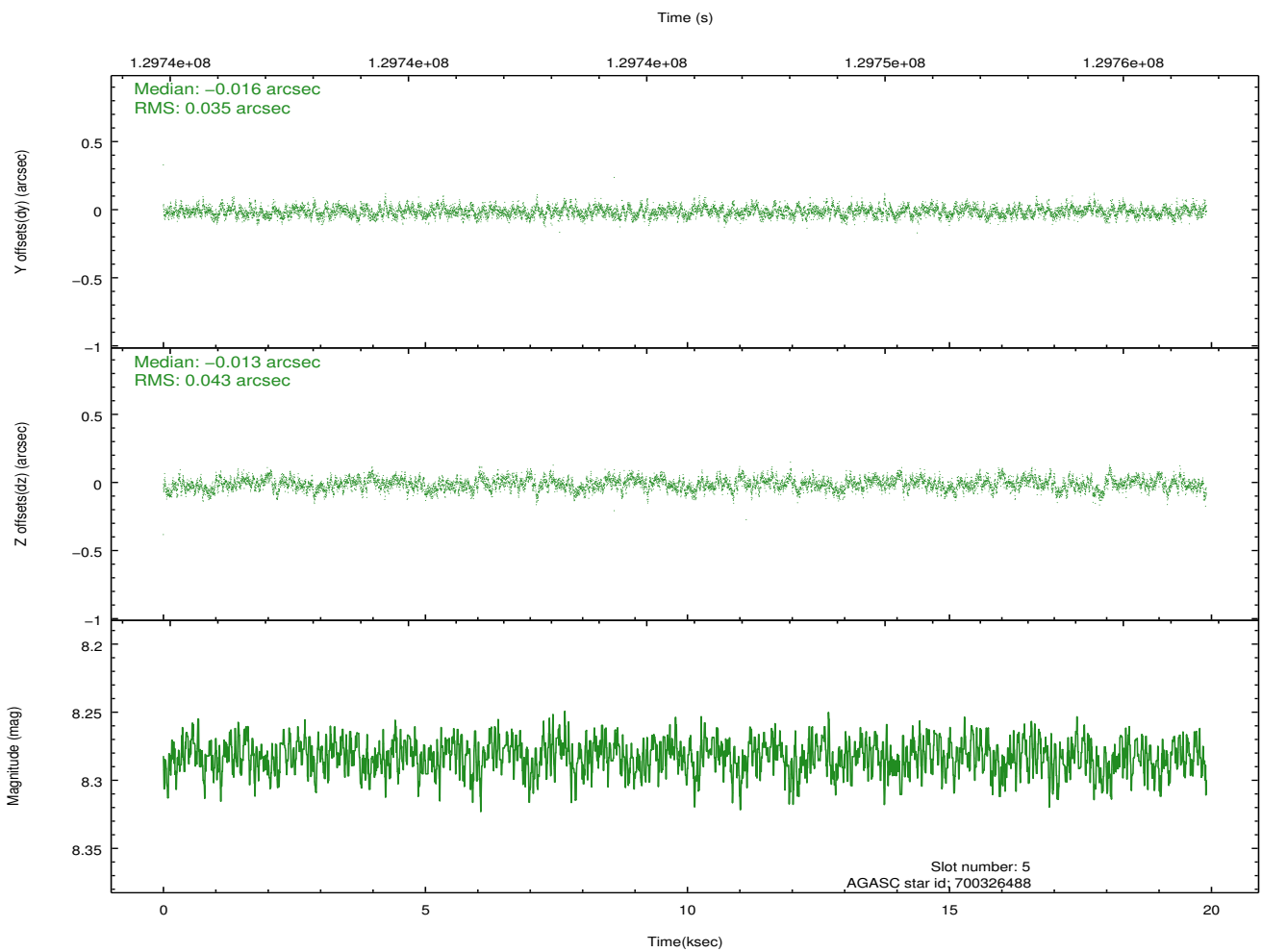
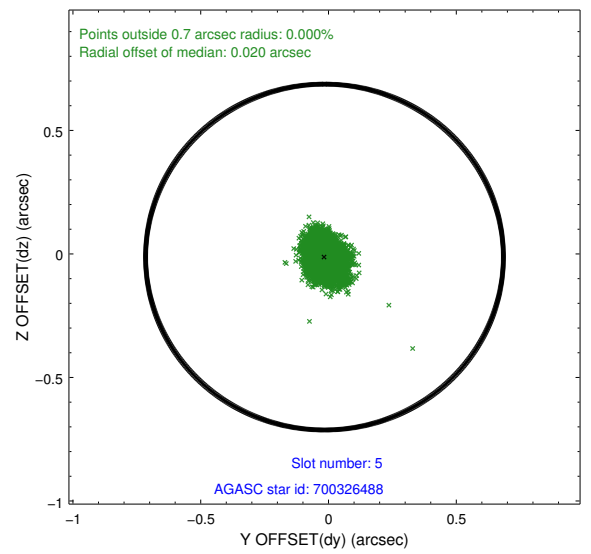
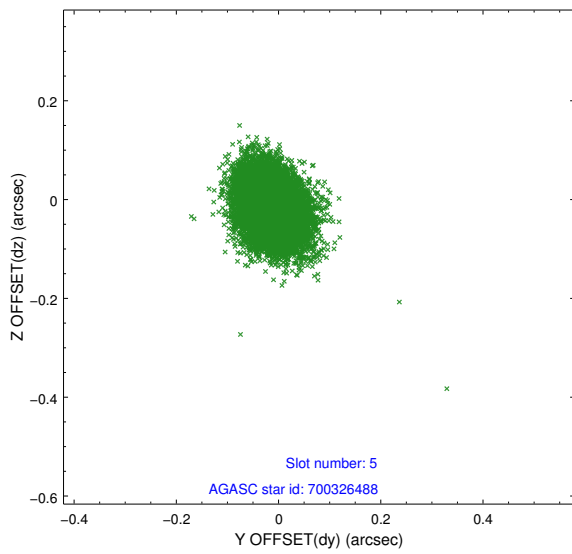
2.4.1 Slot 3



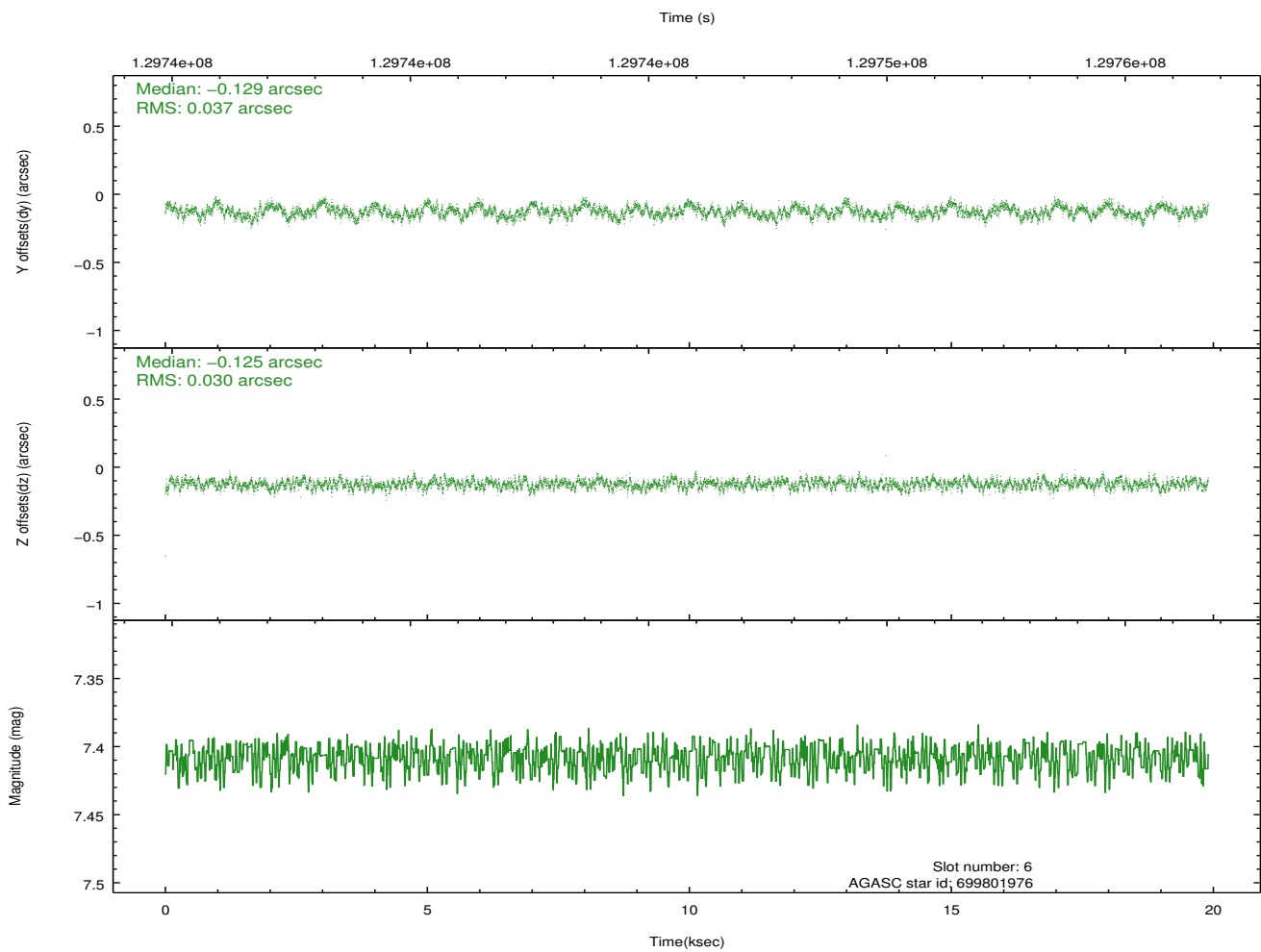
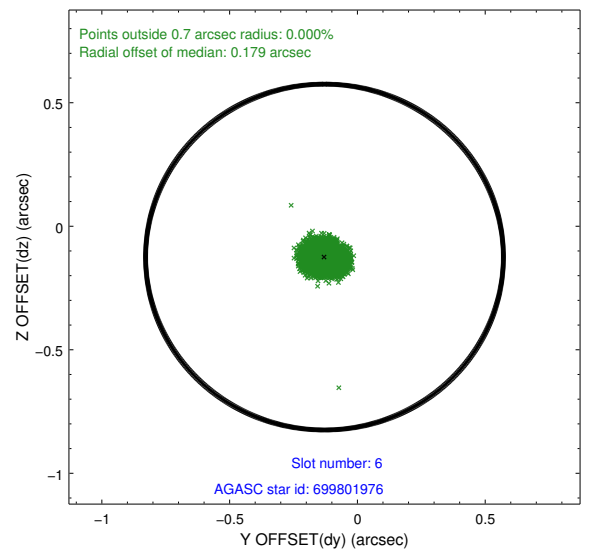
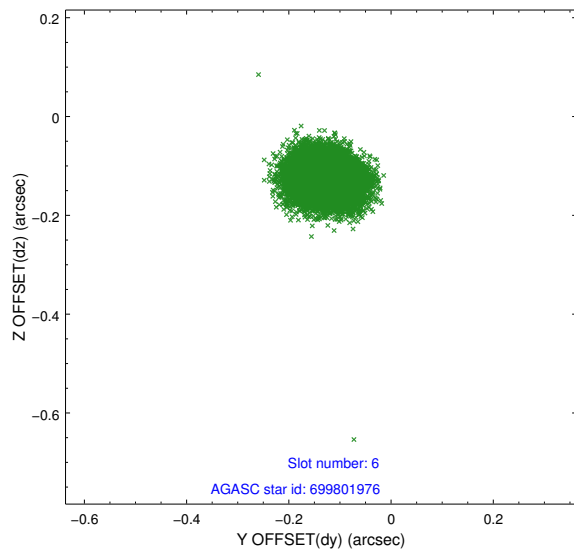
2.4.2 Slot 4



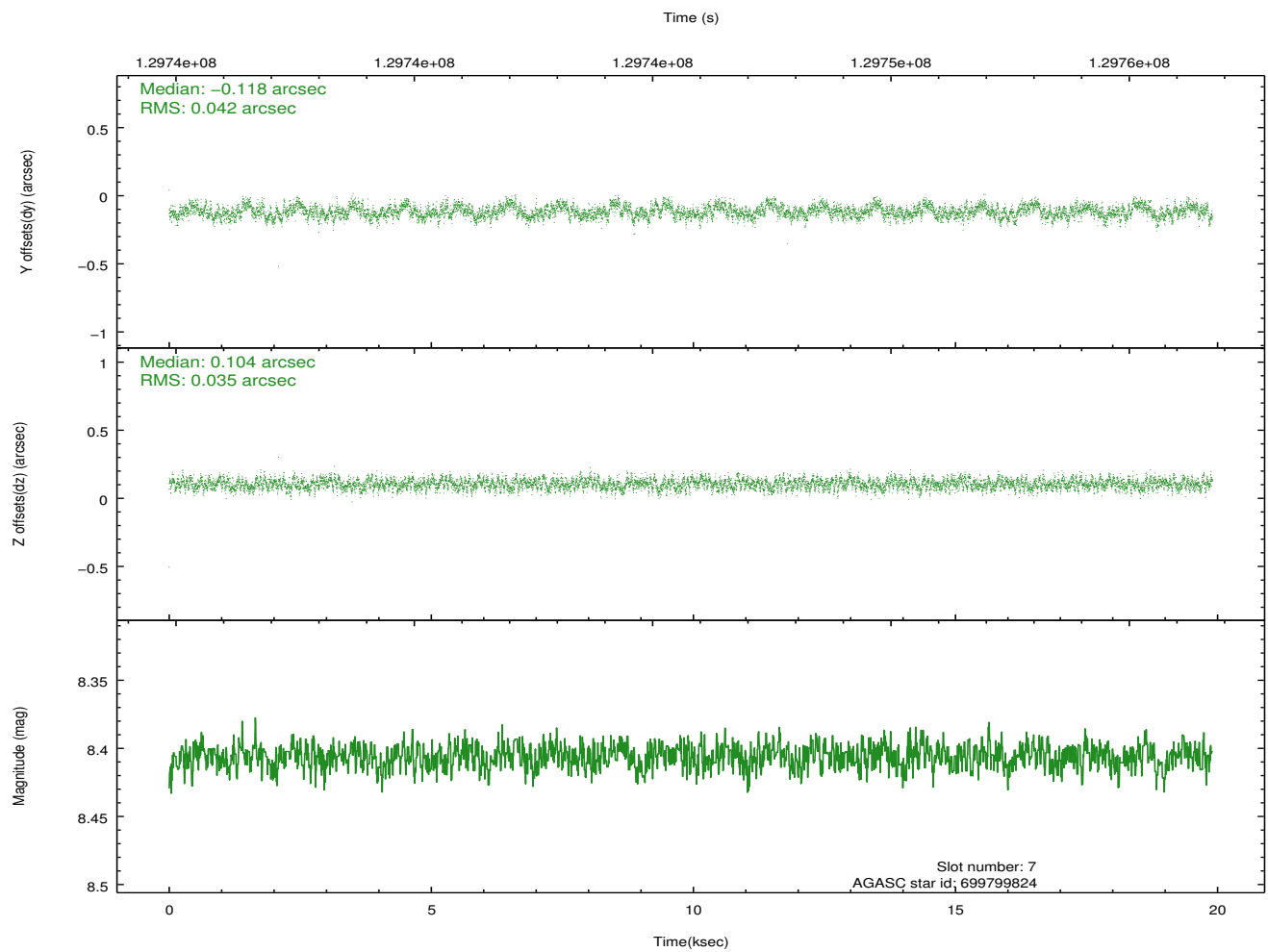
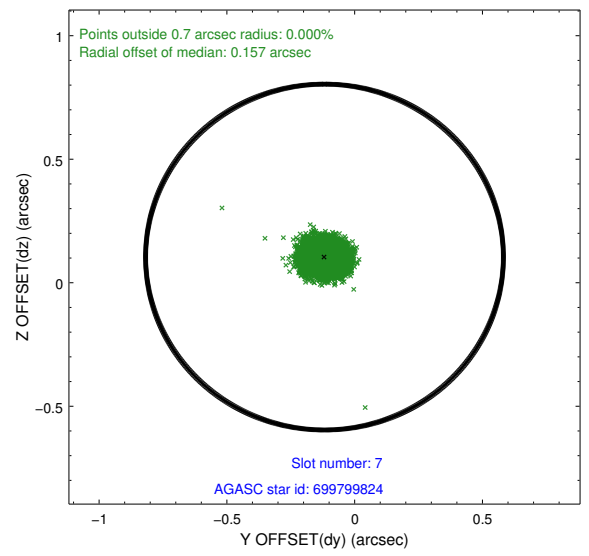
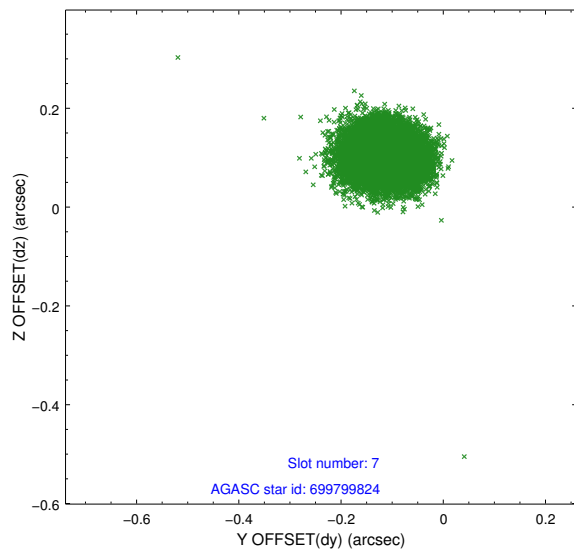
2.4.3 Slot 5



2.4.4 Slot 6

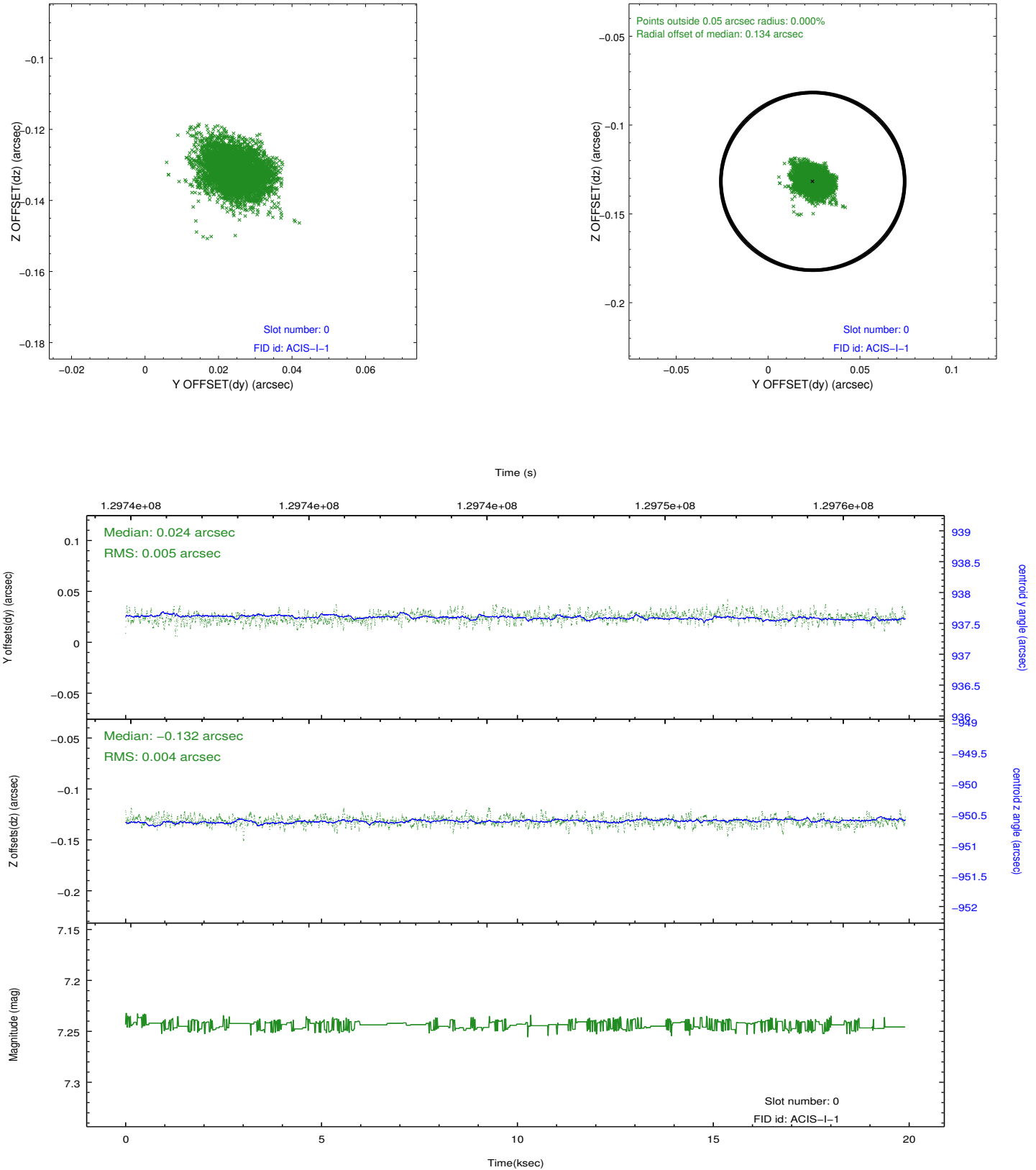


2.4.5 Slot 7

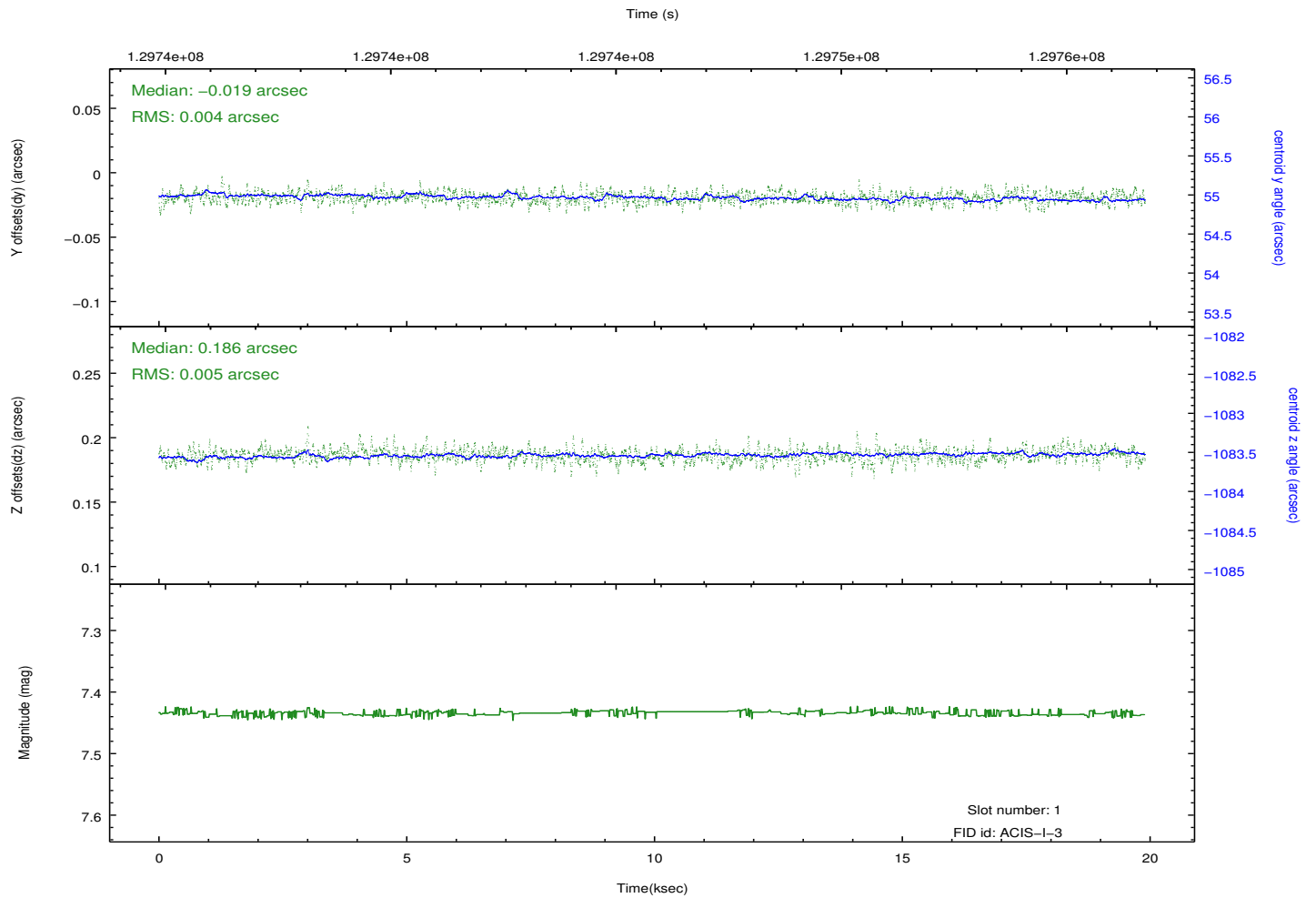
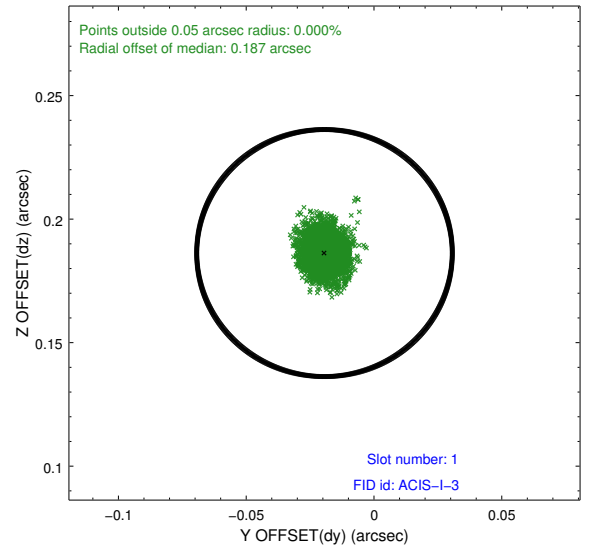
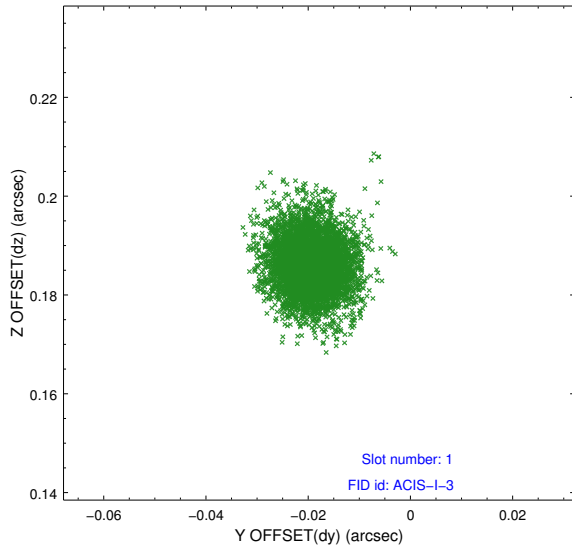


2.5 FID Slots

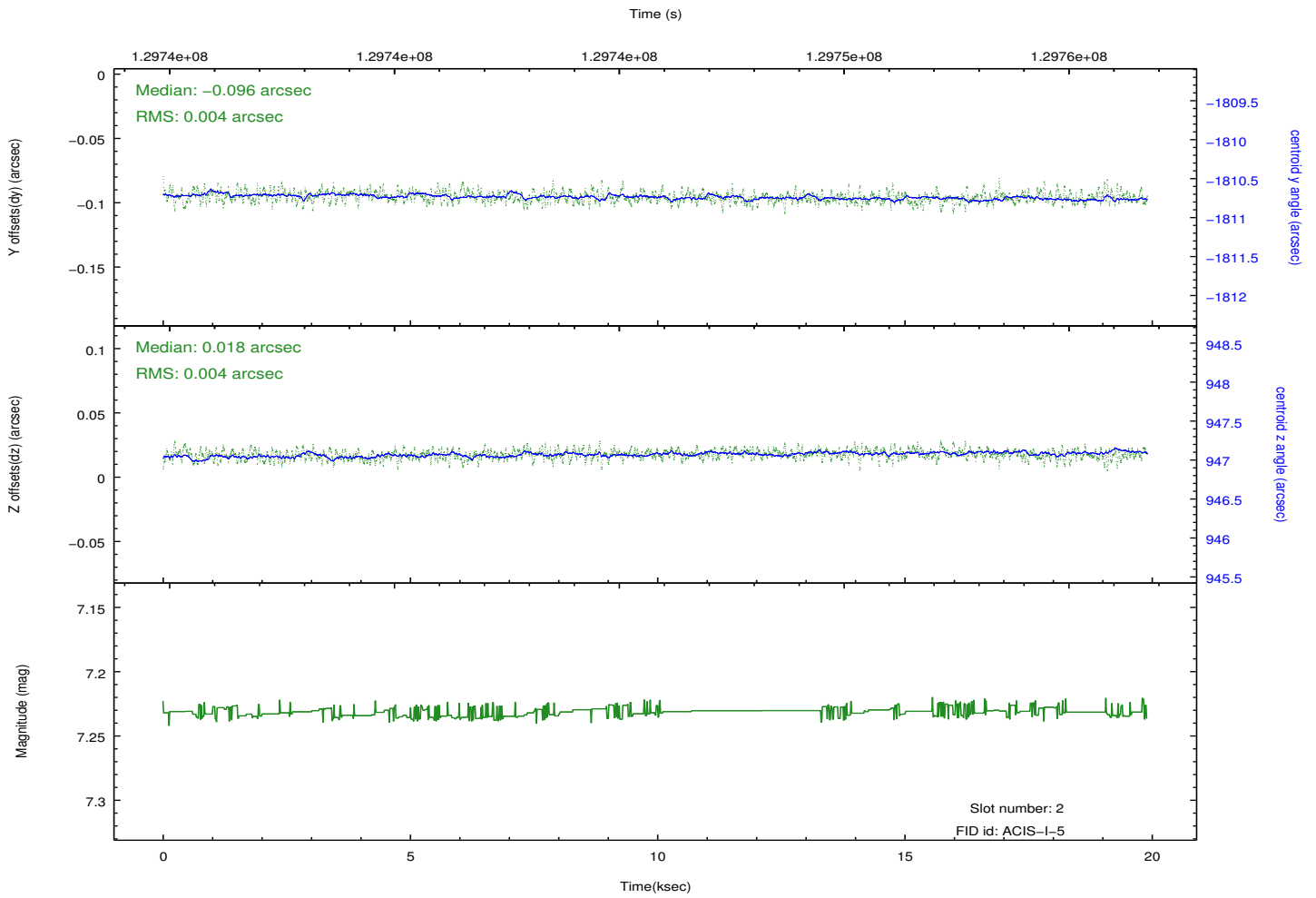
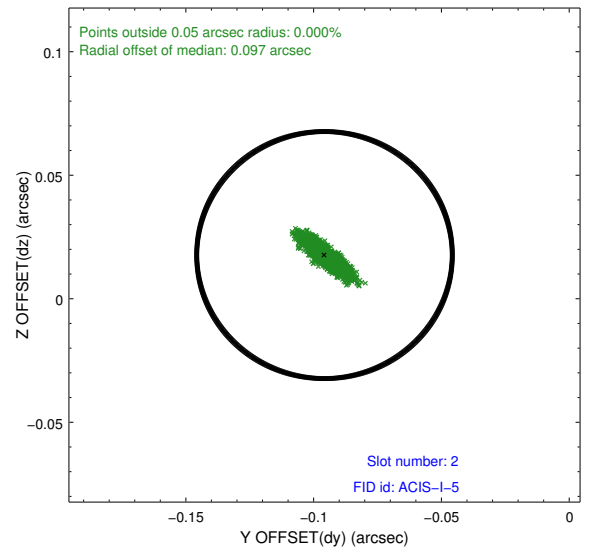
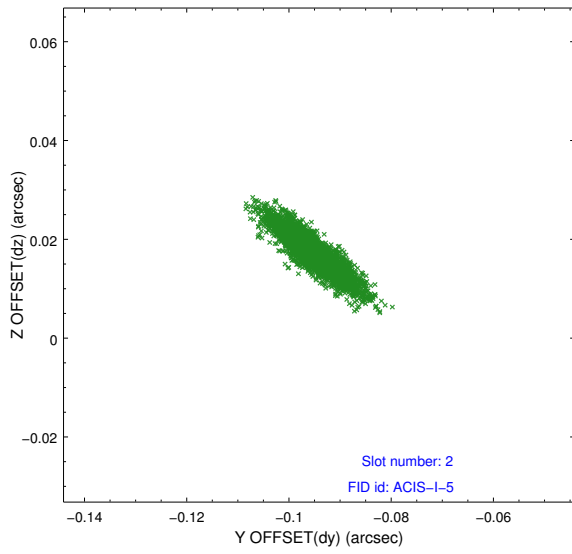
2.5.1 Slot 0



2.5.2 Slot 1



2.5.3 Slot 2



A Summary

A.1 Status

V&V Scientist	Beth Sundheim
V&V Date (YYYY-MM-DD)	2012.10.04
V&V Edition	1
V&V Disposition and Status	OK
V&V Charge Time	19.489

A.2 Comments