

V&V Reference Report

L2 ASCDS Version : 8.4.5

Observation 3412 - L2 Version 5
Chandra X-Ray Center

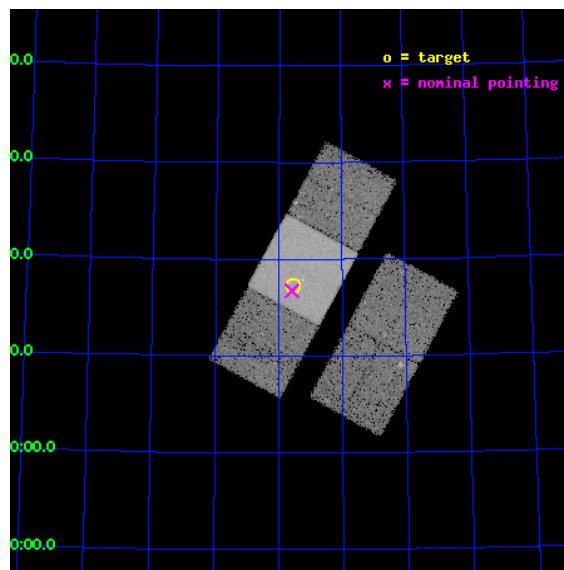
L2 Processing Date : Oct 2 2012

Contents

1	Front	2
2	OBI	3
2.1	OBI	3
2.1.1	Images	3
2.1.2	Bias	3
2.1.3	Parameters	4
2.1.4	Events	4
2.2	Compared Parameters	5
2.3	Aspect	6
2.4	Star Slots	9
2.4.1	Slot 3	9
2.4.2	Slot 4	10
2.4.3	Slot 5	11
2.4.4	Slot 7	12
2.5	FID Slots	13
2.5.1	Slot 0	13
2.5.2	Slot 1	14
2.5.3	Slot 2	15
A	Summary	16
A.1	Status	16
A.2	Comments	16

1 Front

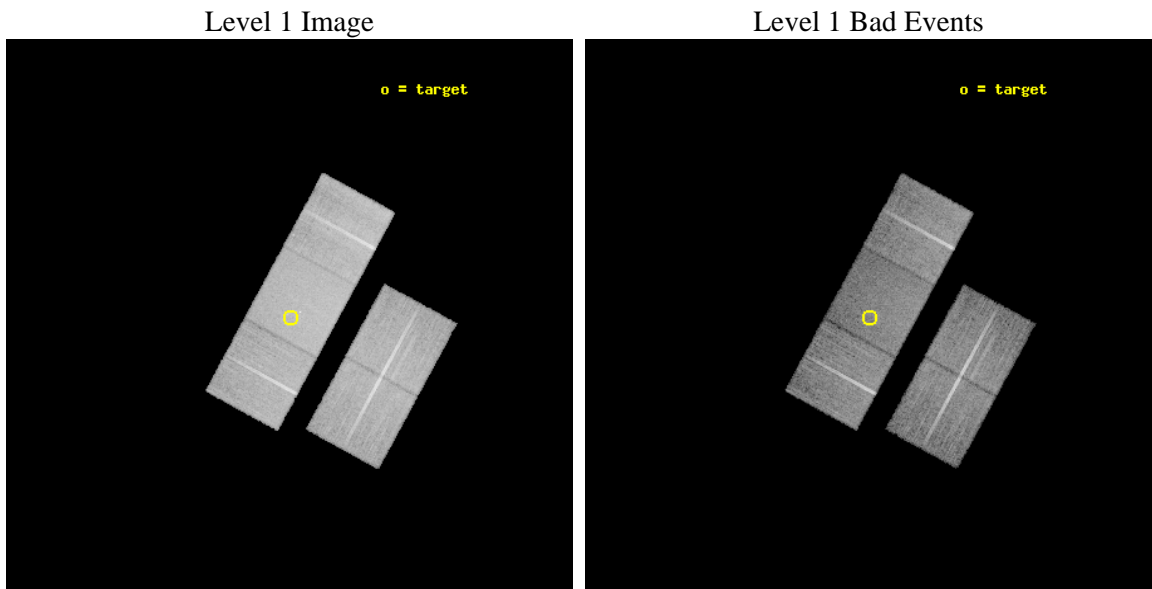
seq_num	100032	Sequence number
obs_id	3412	Observation id
title	X-RAY OBSERVATIONS OF THE FIRST COUNTERPART TO A FAST X-RAY TRANSIENT, XRF010930	Proposal title
observer	Prof. Fiona Harrison	Principal investigator
object	FXRT011030	Source name
dtcycle	0	
cycle	P	events from which exps? Prim/Second/Both
ra_targ	310.884583	Observer's specified target RA [deg]
dec_targ	77.288583	Observer's specified target Dec [deg]
ra_nom	310.89848034907	Nominal RA [deg]
dec_nom	77.279351917536	Nominal Dec [deg]
roll_nom	298.55754676245	Nominal Roll [deg]
revision	5	Processing version of data
ontime	20122.099961311	Sum of GTIs [s]
livetime	19859.189911642	Livetime [s]
ontime2	20122.099961311	Sum of GTIs [s]
ontime3	20122.099961311	Sum of GTIs [s]
ontime6	20122.099961311	Sum of GTIs [s]
ontime7	20122.099961311	Sum of GTIs [s]
ontime8	20122.099961311	Sum of GTIs [s]
l2events	129243	Number of level 2 events



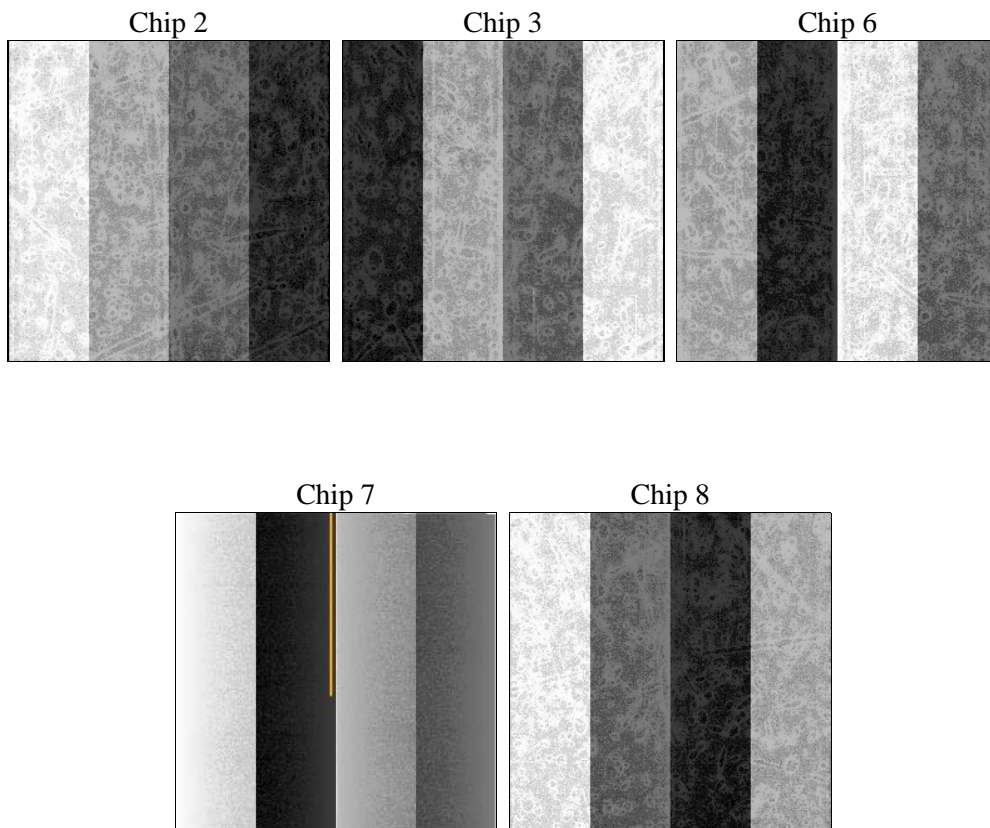
2 OBI

2.1 OBI

2.1.1 Images



2.1.2 Bias



2.1.3 Parameters

obi_num	1	Obi number	sched_exp_time	20000.000000	[s] Scheduled observation exposure time
ascdsver	8.4.5	Processing system revision	ontime	20122.099961311	Sum of GTIs [s]
caldbver	4.5.2	 	ontime2	20122.099961311	Sum of GTIs [s]
date	2012-10-02T20:11:43	Date and time of file creation	ontime3	20122.099961311	Sum of GTIs [s]
revision	5	Processing version of data	ontime6	20122.099961311	Sum of GTIs [s]
			ontime7	20122.099961311	Sum of GTIs [s]
			ontime8	20122.099961311	Sum of GTIs [s]
			l1events	988609	Number of level 1 events

2.1.4 Events

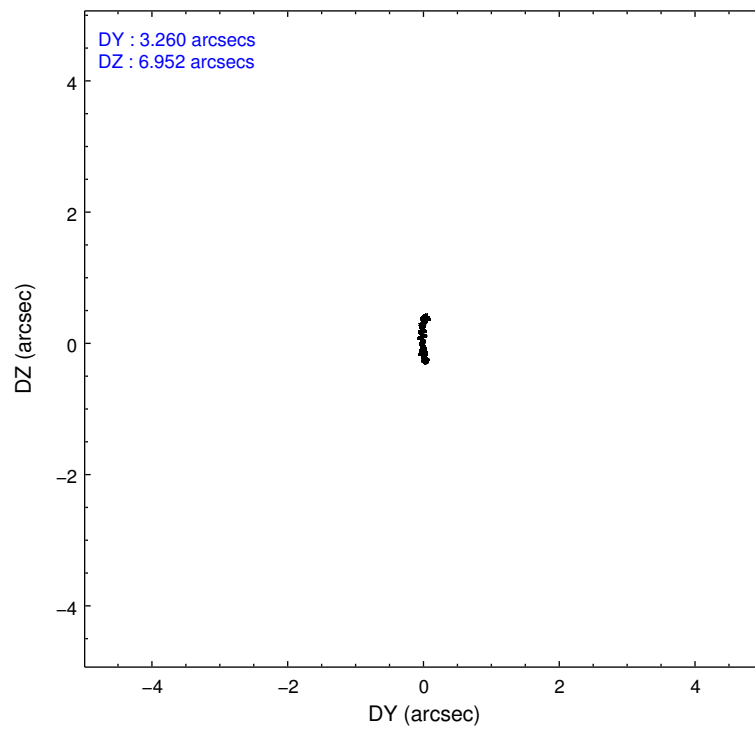
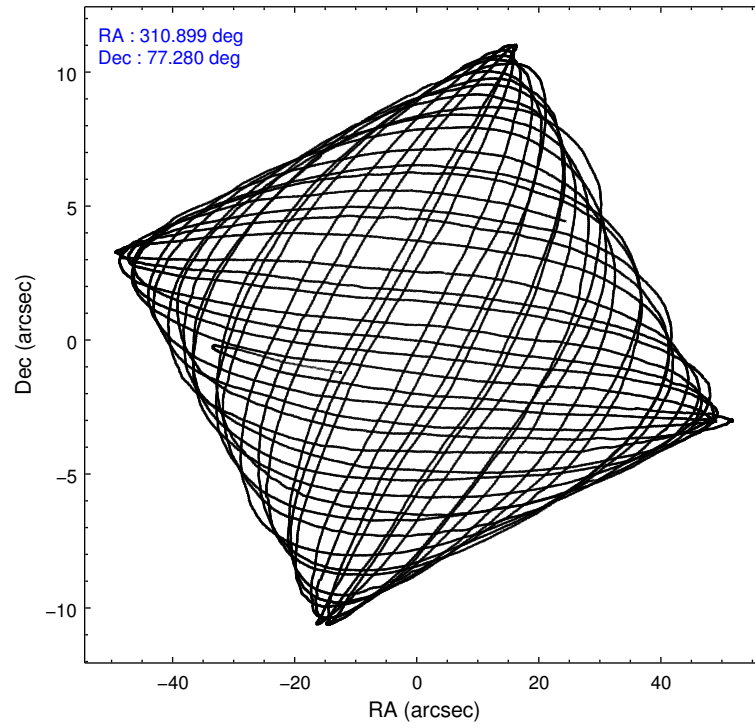
	ccd 2	ccd 3	ccd 6	ccd 7	ccd 8
level 1 events	166864	171307	180057	256047	214334
rejected events	151053	155911	163967	181644	176206
rejected %	90%	91%	91%	70%	82%

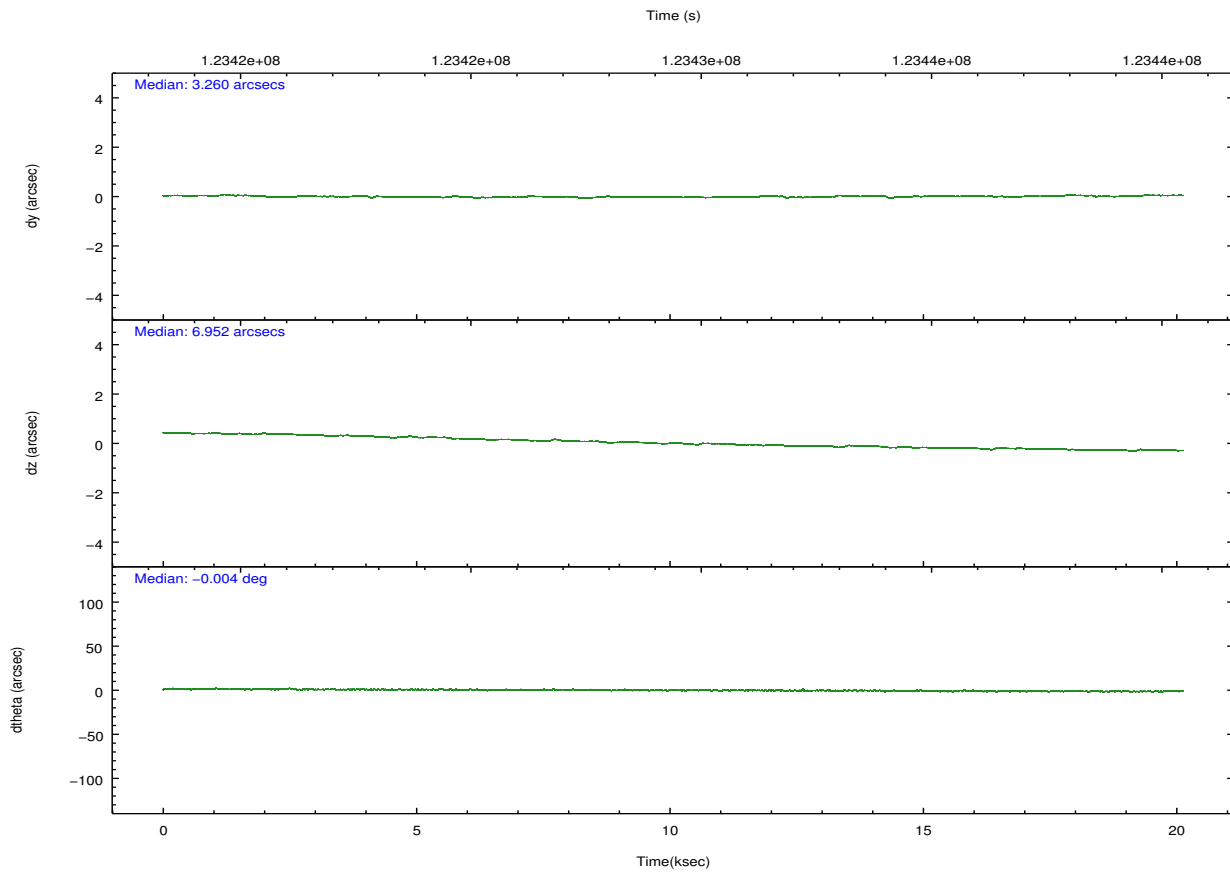
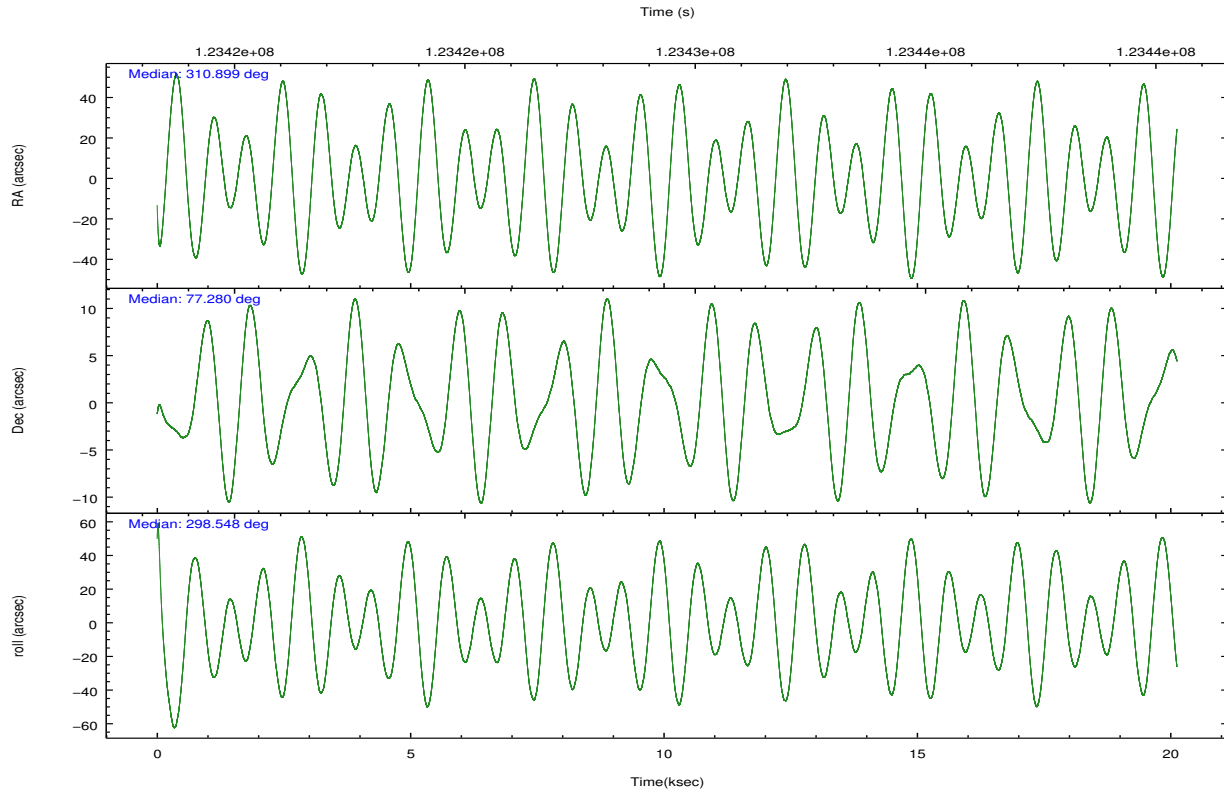
	ccd 2	ccd 3	ccd 6	ccd 7	ccd 8
grade 0 events	23790	23925	25412	24568	30446
	14%	13%	14%	9%	14%
grade 1 events	152	147	160	194	203
	0%	0%	0%	0%	0%
grade 2 events	8521	8438	9061	30446	14143
	5%	4%	5%	11%	6%
grade 3 events	3340	3410	3659	14202	6433
	2%	1%	2%	5%	3%
grade 4 events	3357	3330	3639	13840	6186
	2%	1%	2%	5%	2%
grade 5 events	4912	5756	6184	18161	8097
	2%	3%	3%	7%	3%
grade 6 events	7142	7198	8516	63245	14668
	4%	4%	4%	24%	6%
grade 7 events	115650	119103	123426	91391	134158
	69%	69%	68%	35%	62%

2.2 Compared Parameters

Parameter	Planned	Actual	Parameter	Planned	Actual
Instrument	ACIS	ACIS	Obspar format version number	7	7
Detector	ACIS-23678	ACIS-23678	Obspar file type	PREDICTED	ACTUAL
Grating	NONE	NONE	Obspar update status	NONE	UPDATED
Data mode	FAINT	FAINT	Number of optional ACIS chips dropped	0	0
Observation mode	POINTING	POINTING	On-chip summing requested	N	N
[deg] Pointing RA	310.792007	310.8984803490691	Subarray requested	NONE	NONE
[deg] Pointing Dec	77.293249	77.27935191753632	Alternating exposures requested	N	N
[deg] Pointing Roll	298.504731	298.5575467624475	[s] Primary exposure time	0.000000	3.1
[mm] SIM focus pos	-0.684267	-0.6828225247311905			
[mm] SIM defocus	0	0.001444936568705701			
[mm] SIM translation stage pos	-190.132523	-190.1400660498719			
[mm] SIM translation stage offset	0	0.00754346686406393			
[s] Observation start time (MET)	123419449.184000	123417415.66163			
Observation start date	2001-11-29T11:09:45	2001-11-29T10:36:55			
[s] Observation end time (MET)	123439449.184000	123440487.38755			
Observation end date	2001-11-29T16:43:05	2001-11-29T17:01:27			
Read mode	TIMED	TIMED			

2.3 Aspect



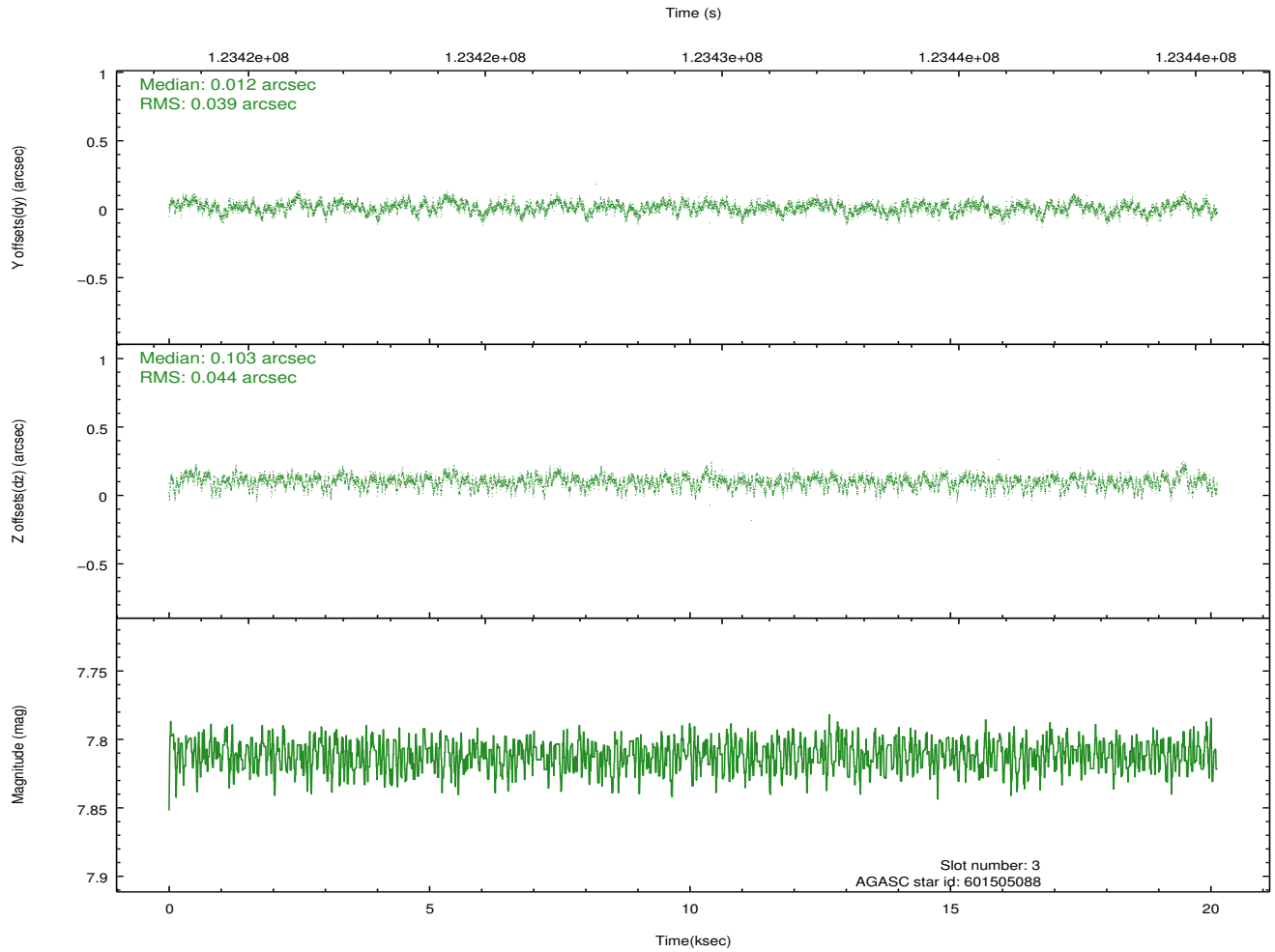
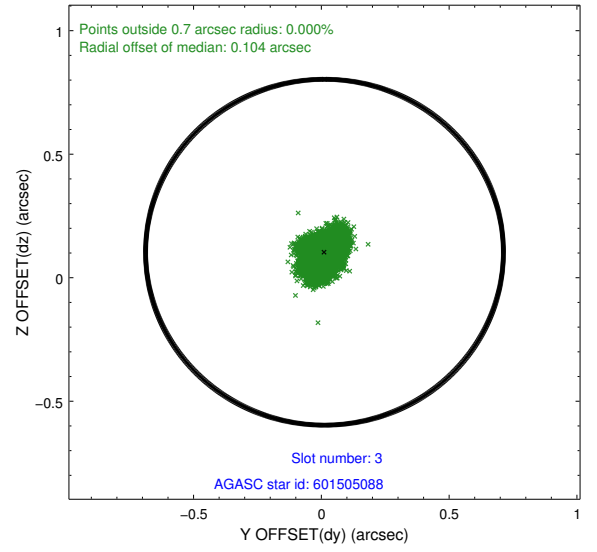
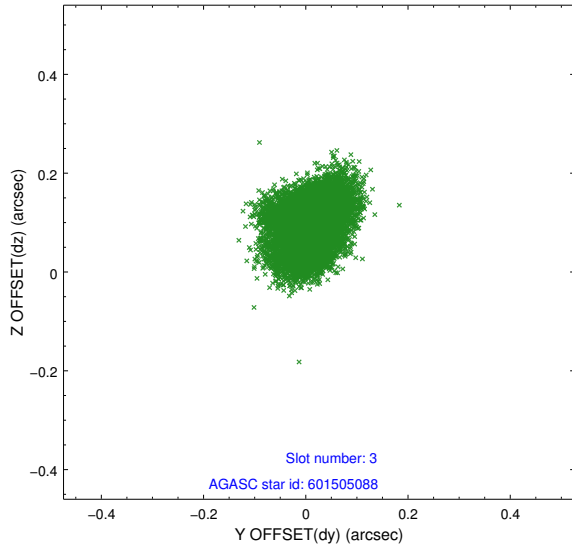


Slot Statistics

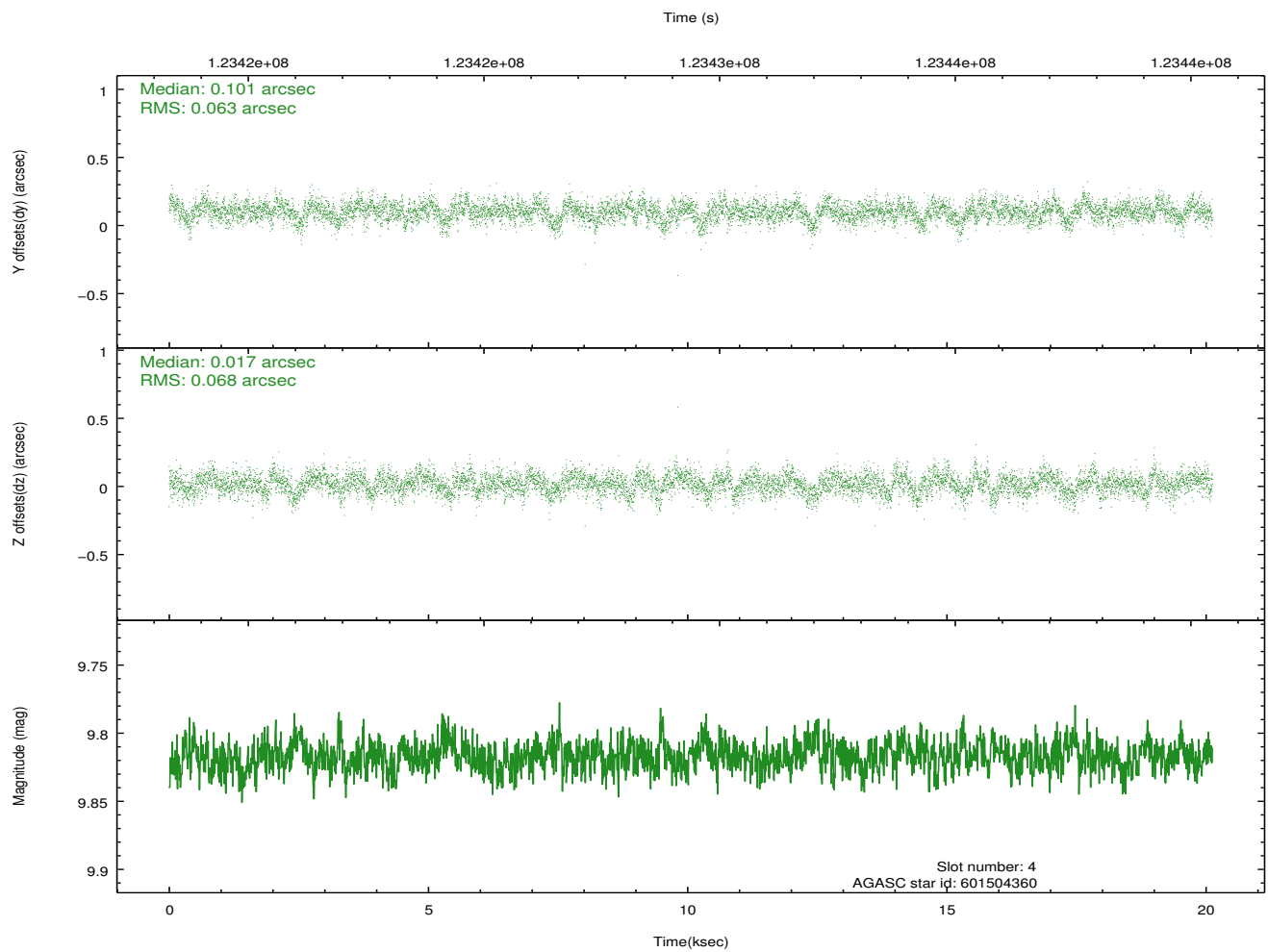
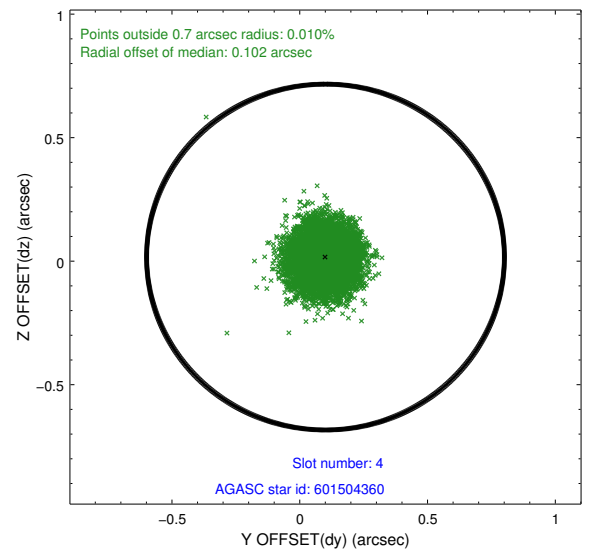
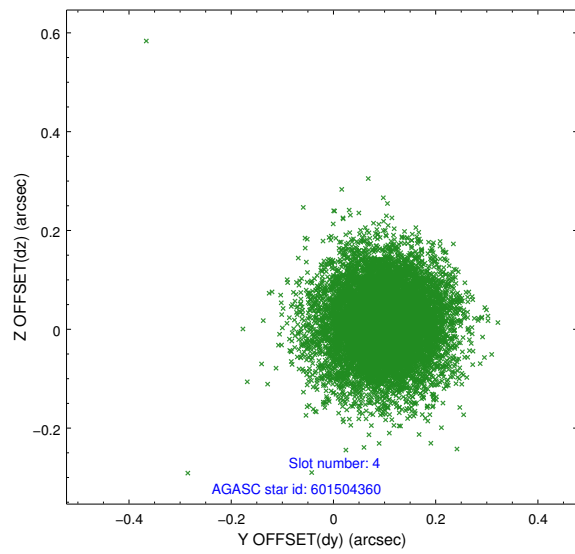
slot	status	id	mag	n_pts	med_dy	med_dz	dr1	dr2	ra	dec	mean_y	mean_z
0	FID	ACIS-S-2	7.11	4909	-0.012	0.009	0.009	0.014	0.000000	0.000000	-755.92	-1728.15
1	FID	ACIS-S-4	7.20	4909	-0.027	0.004	0.008	0.014	0.000000	0.000000	2157.26	180.15
2	FID	ACIS-S-5	7.24	4909	0.007	-0.003	0.007	0.012	0.000000	0.000000	-1808.51	174.01
3	GUIDE	601505088	7.81	9811	0.012	0.103	0.061	0.103	307.953606	77.436284	-1558.66	-1682.11
4	GUIDE	601504360	9.82	9809	0.101	0.017	0.098	0.161	308.752775	77.505160	-1451.22	-1019.42
5	GUIDE	601633624	9.82	9806	-0.066	0.021	0.125	0.196	313.008559	77.412541	424.20	1747.61
6	OMITTED		0.00	0	0.000	0.000	0.000	0.000	0.000000	0.000000	0.00	0.00
7	GUIDE	601625592	10.14	9791	-0.044	-0.130	0.111	0.183	311.640347	77.197233	623.52	431.46

2.4 Star Slots

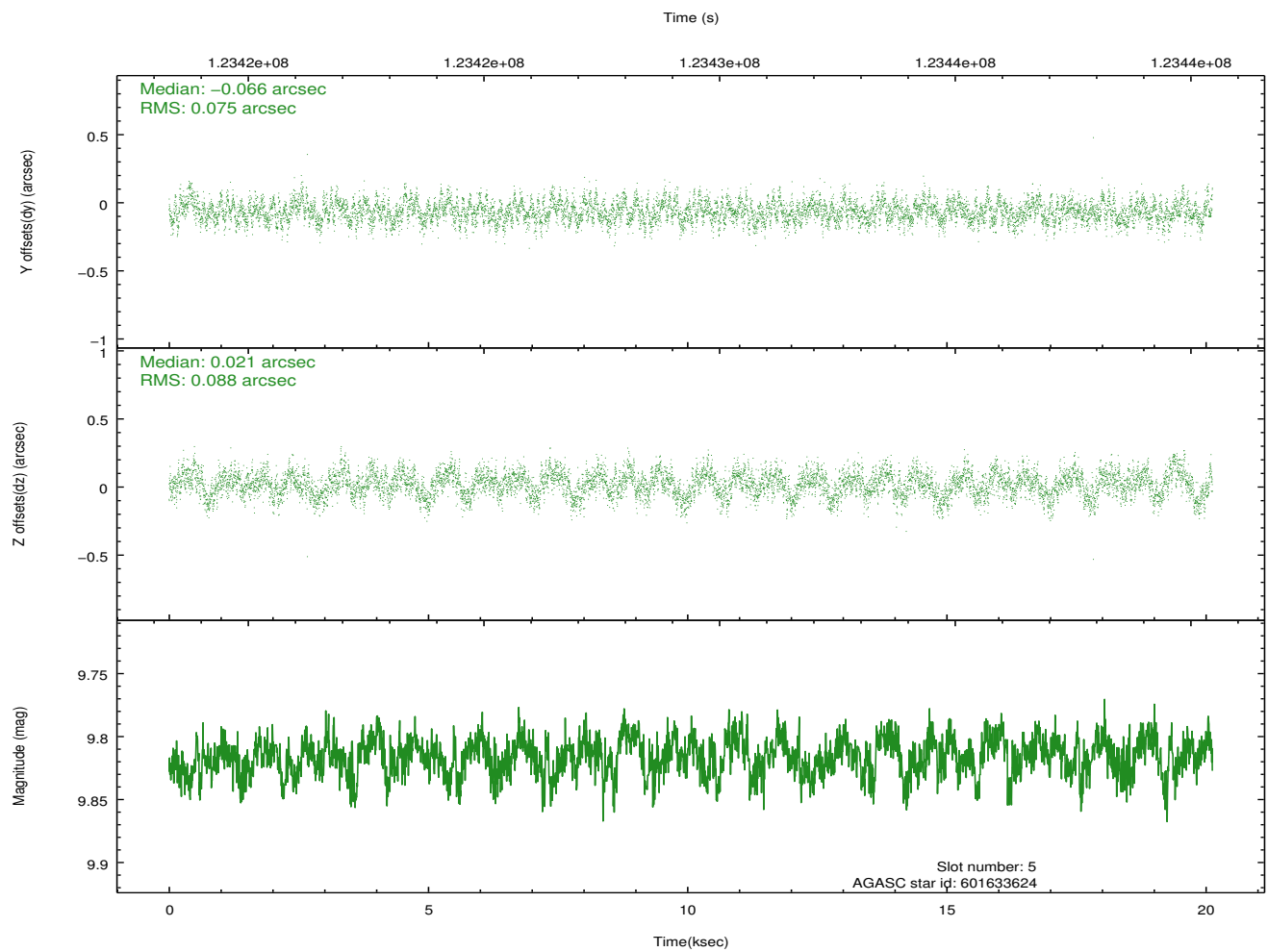
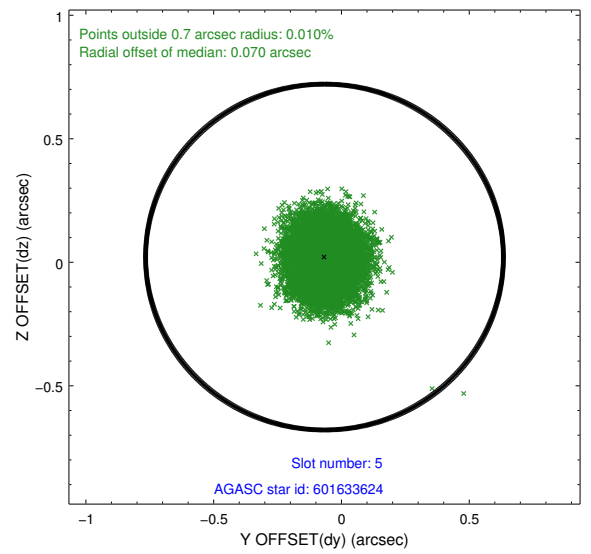
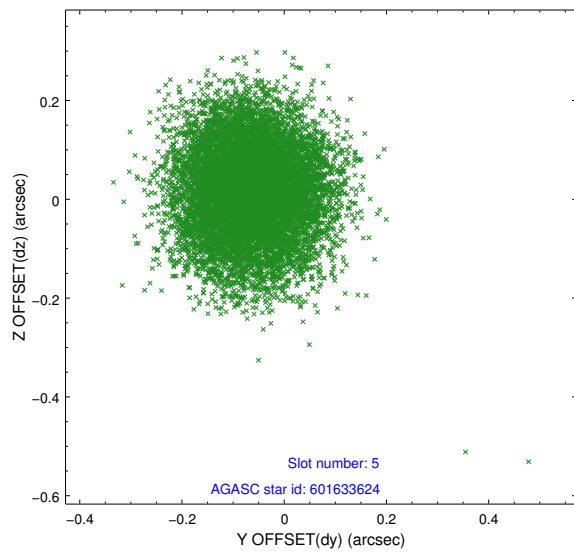
2.4.1 Slot 3



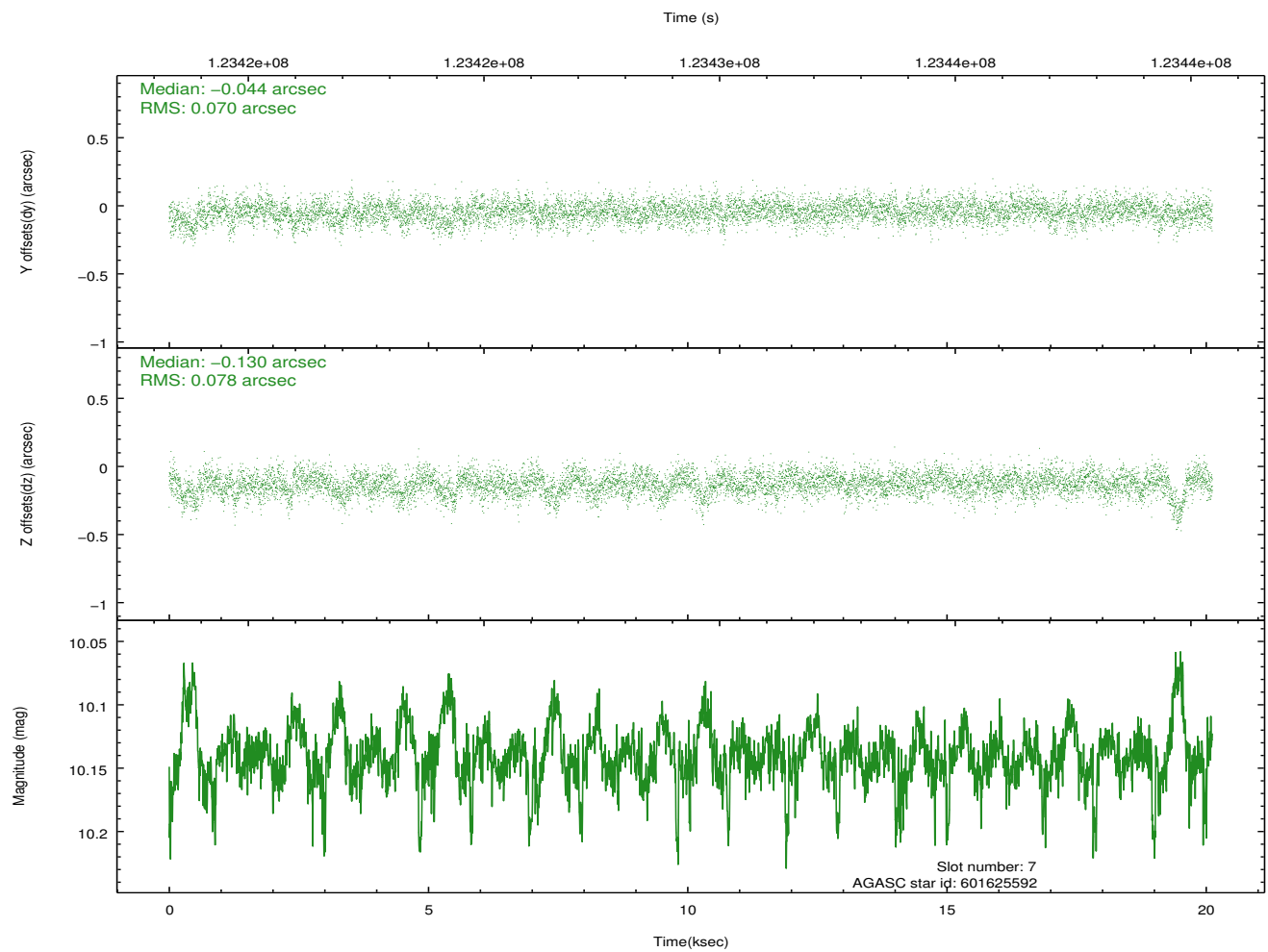
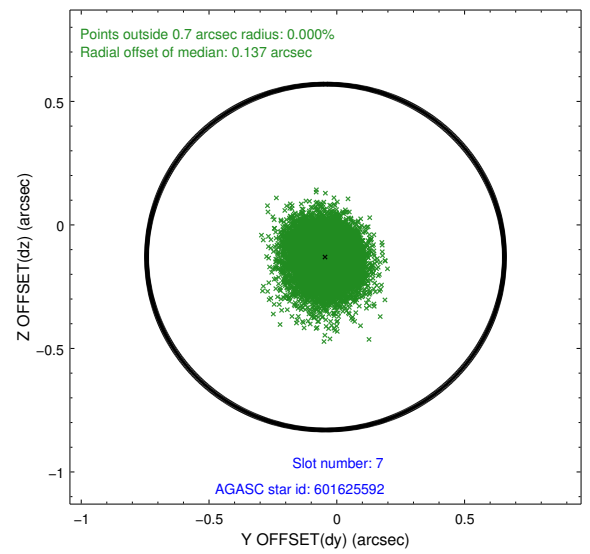
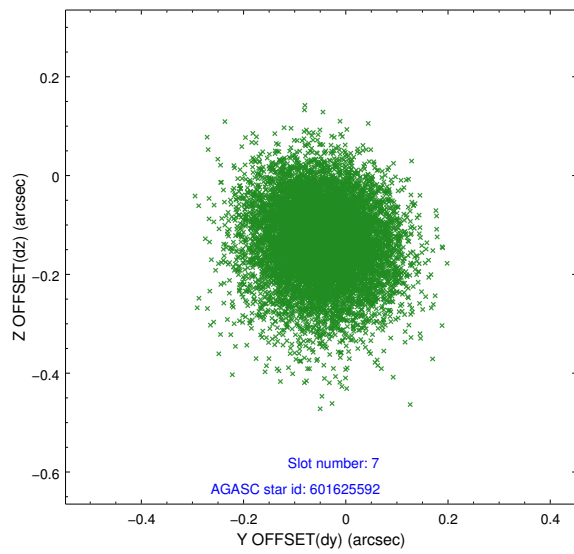
2.4.2 Slot 4



2.4.3 Slot 5

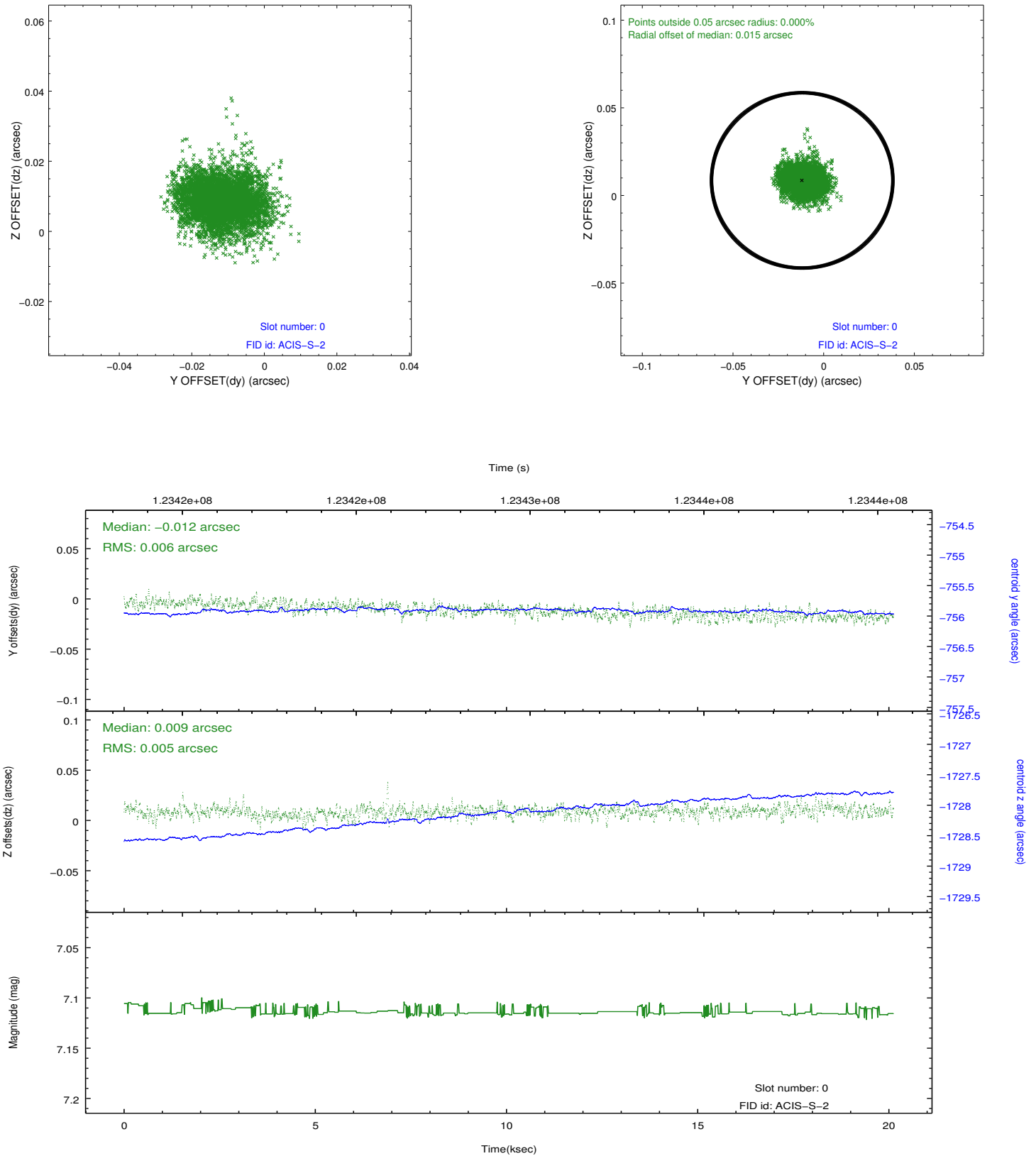


2.4.4 Slot 7

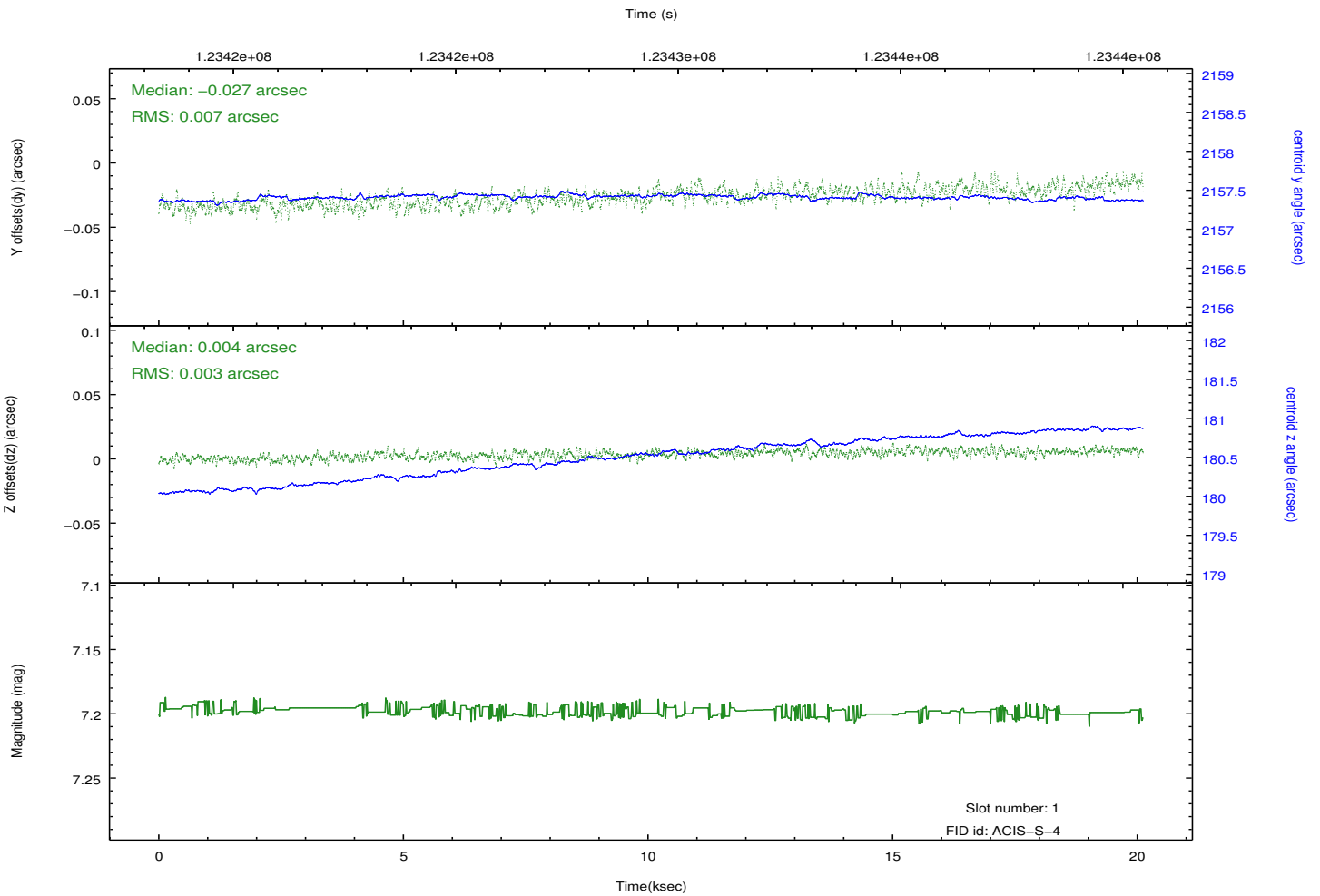
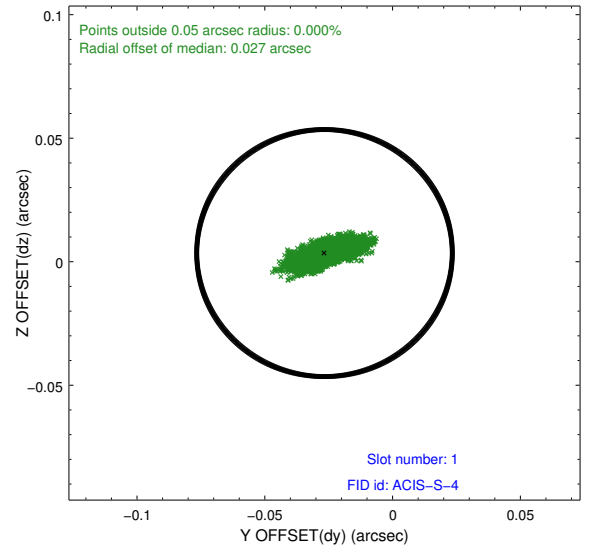
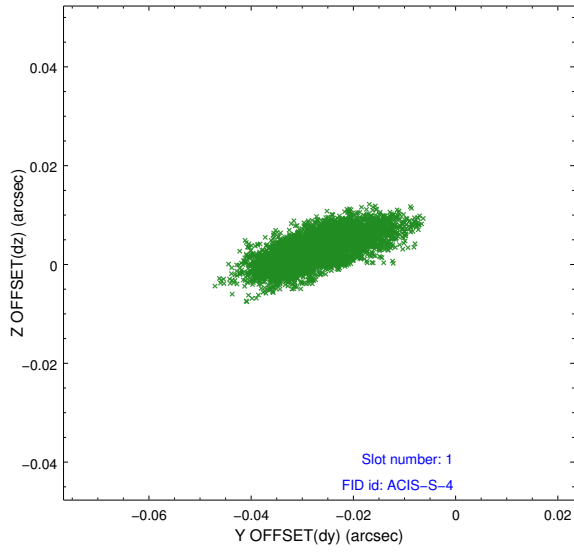


2.5 FID Slots

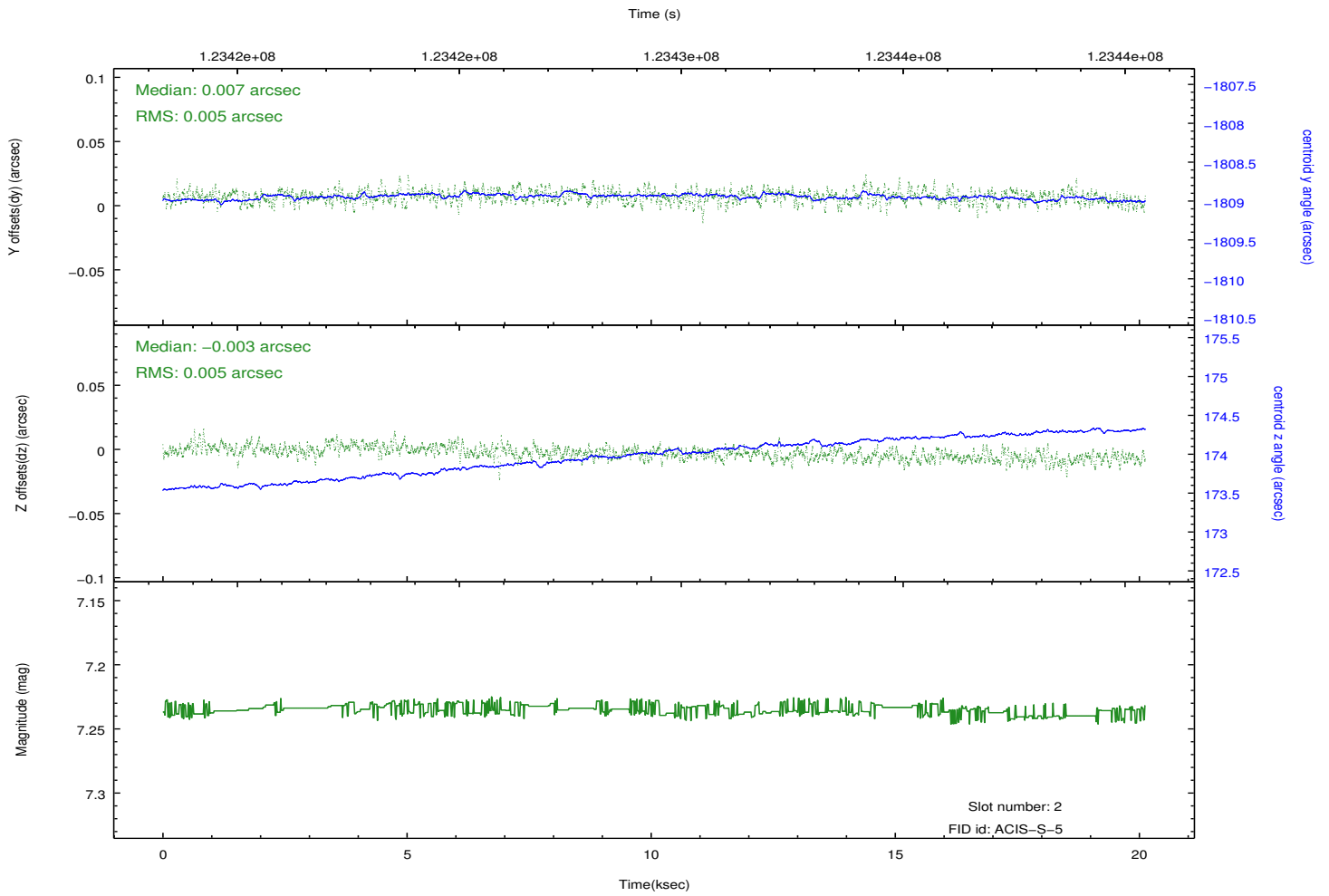
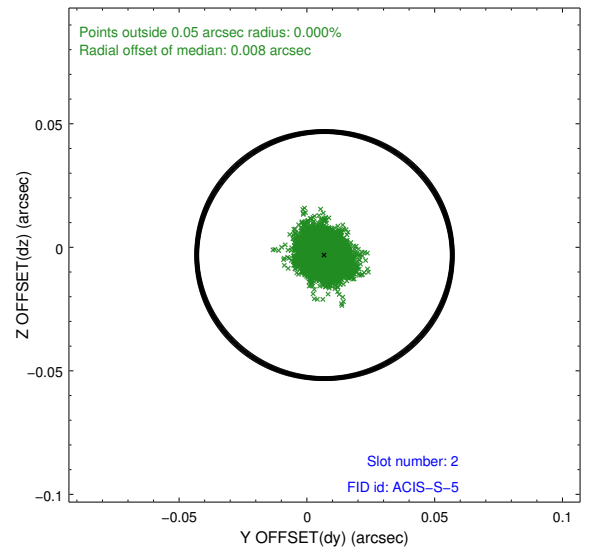
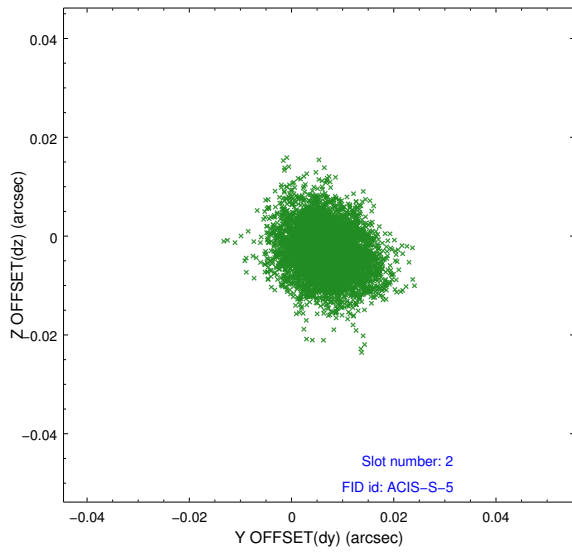
2.5.1 Slot 0



2.5.2 Slot 1



2.5.3 Slot 2



A Summary

A.1 Status

V&V Scientist	Beth Sundheim
V&V Date (YYYY-MM-DD)	2012.10.05
V&V Edition	1
V&V Disposition and Status	OK
V&V Charge Time	20.122

A.2 Comments

The guide star in slot 6 was removed from the aspect solution due to poor data quality. The aspect solution is improved by the removal of this star from the solution.