

V&V Reference Report

L2 ASCDS Version : 8.4.5

Observation 3422 - L2 Version 3
Chandra X-Ray Center

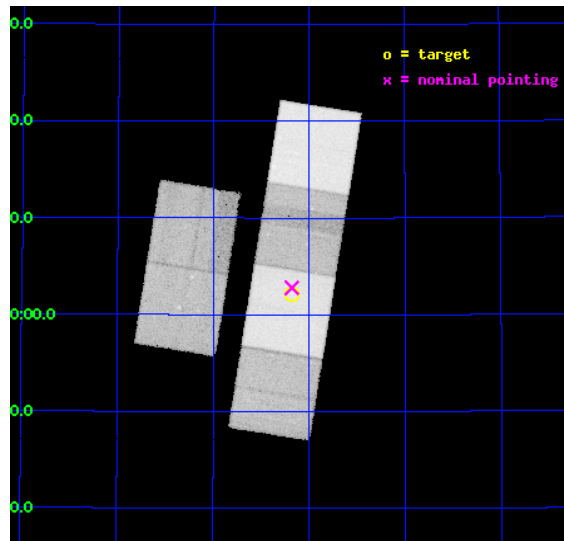
L2 Processing Date : Sep 30 2012

Contents

1	Front	2
2	OBI	3
2.1	OBI	3
2.1.1	Images	3
2.1.2	Bias	3
2.1.3	Parameters	4
2.1.4	Events	4
2.2	Compared Parameters	5
2.3	Aspect	6
2.4	Star Slots	9
2.4.1	Slot 3	9
2.4.2	Slot 4	10
2.4.3	Slot 5	11
2.4.4	Slot 6	12
2.4.5	Slot 7	13
2.5	FID Slots	14
2.5.1	Slot 0	14
2.5.2	Slot 1	15
2.5.3	Slot 2	16
A	Summary	17
A.1	Status	17
A.2	Comments	17

1 Front

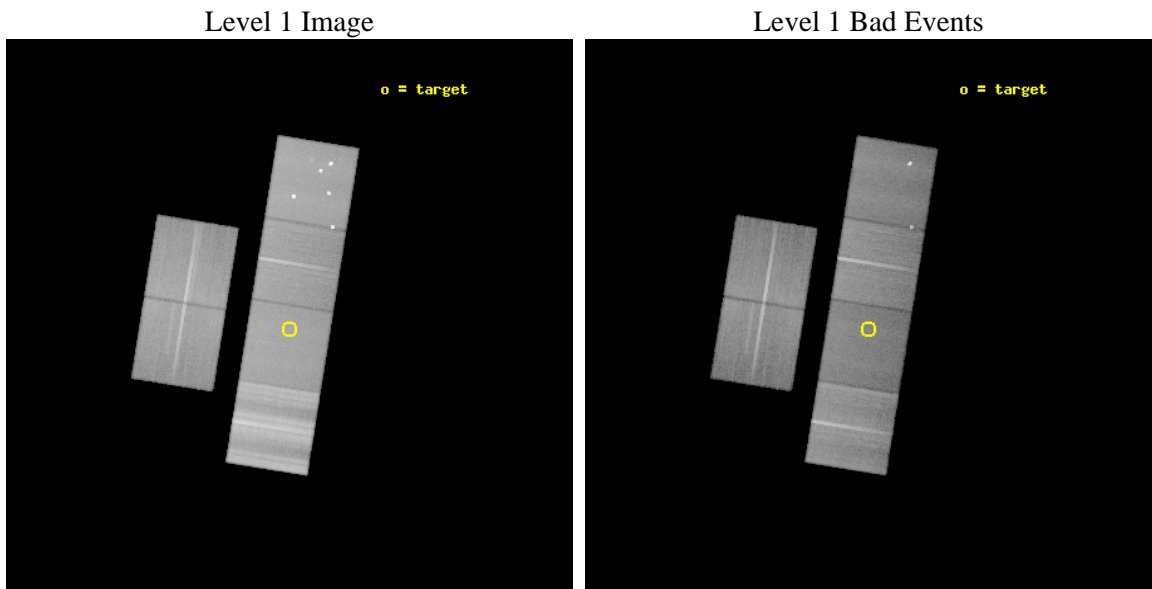
seq_num	400231	Sequence number
obs_id	3422	Observation id
title	MULTIWAVELENGTH OBSERVATIONS OF THE BLACK HOLE XTE J1118+480 IN QUIESCENCE	Proposal title
observer	Dr. Stephen Murray	Principal investigator
object	XTE J1118+480	Source name
dtcycle	0	
cycle	P	events from which exps? Prim/Second/Both
ra_targ	169.545	Observer's specified target RA [deg]
dec_targ	48.03675	Observer's specified target Dec [deg]
ra_nom	169.54526334267	Nominal RA [deg]
dec_nom	48.046470388033	Nominal Dec [deg]
roll_nom	99.131005374054	Nominal Roll [deg]
revision	3	Processing version of data
ontime	46358.40004316	Sum of GTIs [s]
livetime	45771.382068136	Livetime [s]
ontime2	46358.40004316	Sum of GTIs [s]
ontime3	46355.159042969	Sum of GTIs [s]
ontime5	46358.40004316	Sum of GTIs [s]
ontime6	46348.677192137	Sum of GTIs [s]
ontime7	46358.40004316	Sum of GTIs [s]
ontime8	46355.159072906	Sum of GTIs [s]
l2events	575911	Number of level 2 events



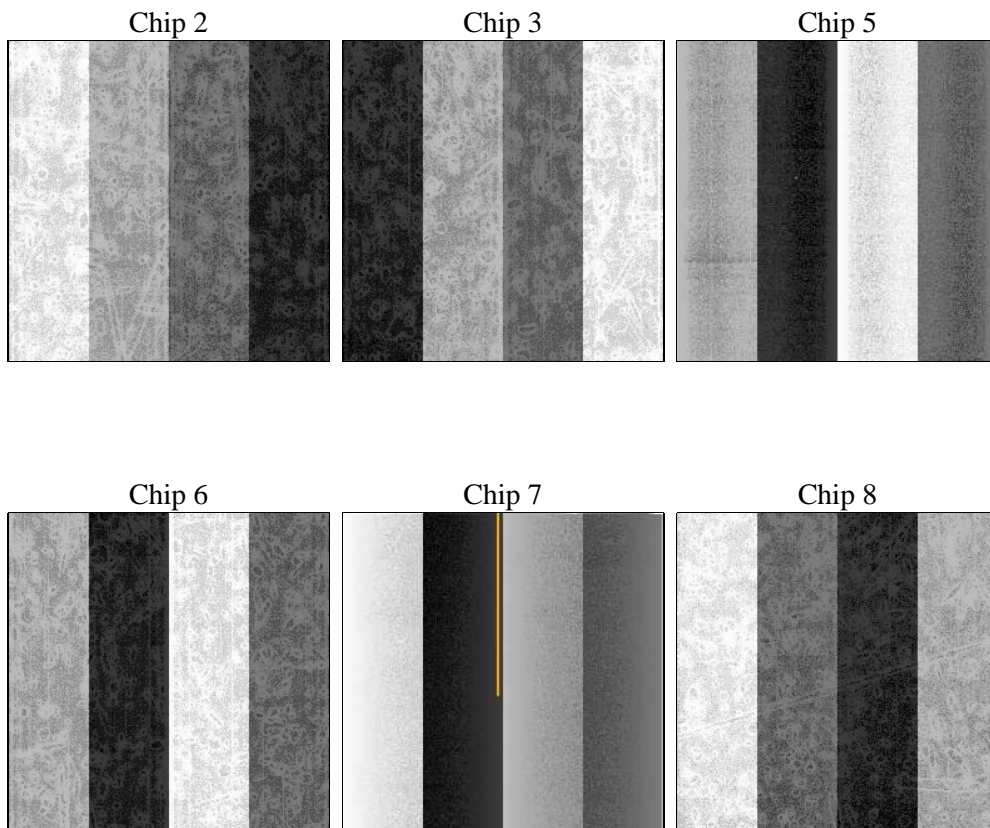
2 OBI

2.1 OBI

2.1.1 Images



2.1.2 Bias



2.1.3 Parameters

obi_num	1	Obi number	sched_exp_time	46400.000000	[s] Scheduled observation exposure time
ascdsver	8.4.5	Processing system revision	ontime	46358.40004316	Sum of GTIs [s]
caldbver	4.5.2	 	ontime2	46358.40004316	Sum of GTIs [s]
date	2012-09-30T06:33:57	Date and time of file creation	ontime3	46355.159042969	Sum of GTIs [s]
revision	3	Processing version of data	ontime5	46358.40004316	Sum of GTIs [s]
			ontime6	46348.677192137	Sum of GTIs [s]
			ontime7	46358.40004316	Sum of GTIs [s]
			ontime8	46355.159072906	Sum of GTIs [s]
			l1events	2733394	Number of level 1 events

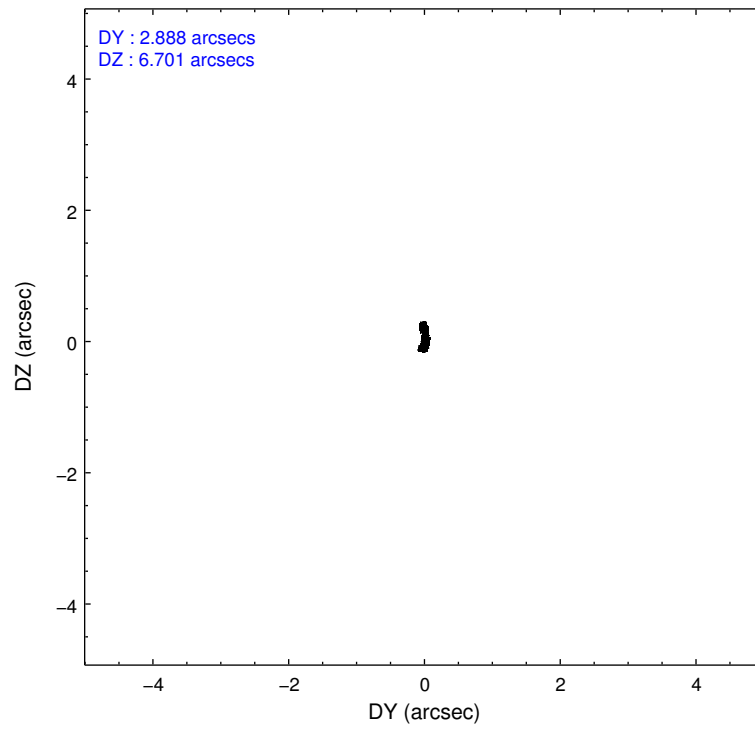
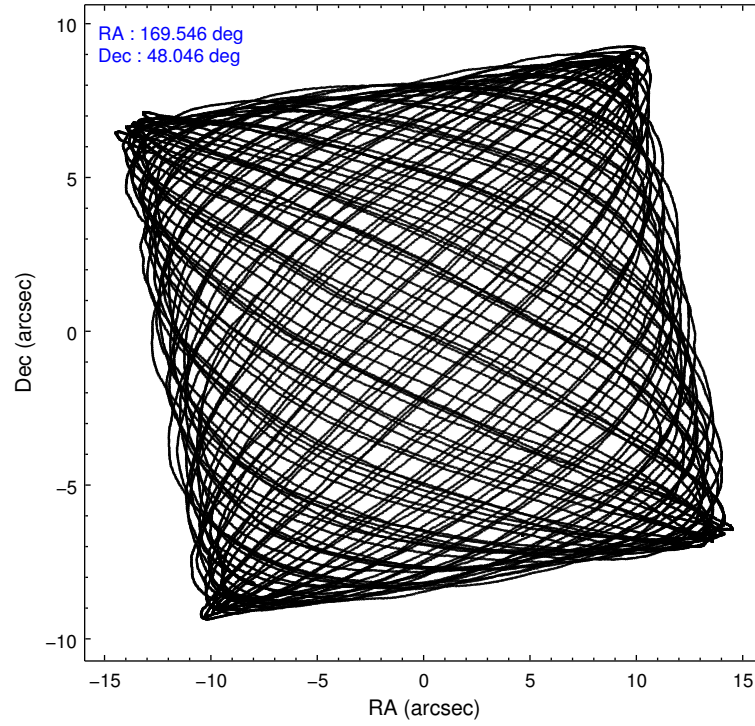
2.1.4 Events

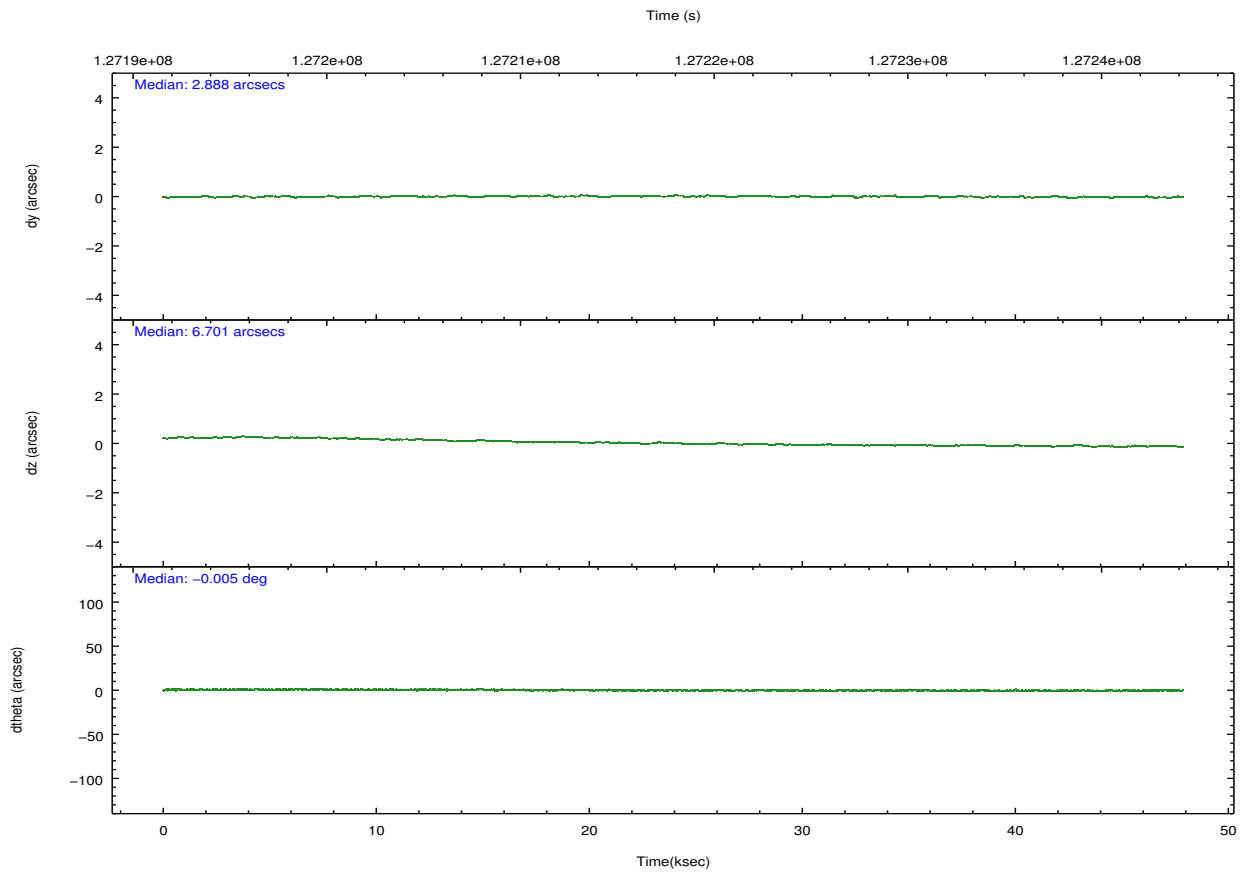
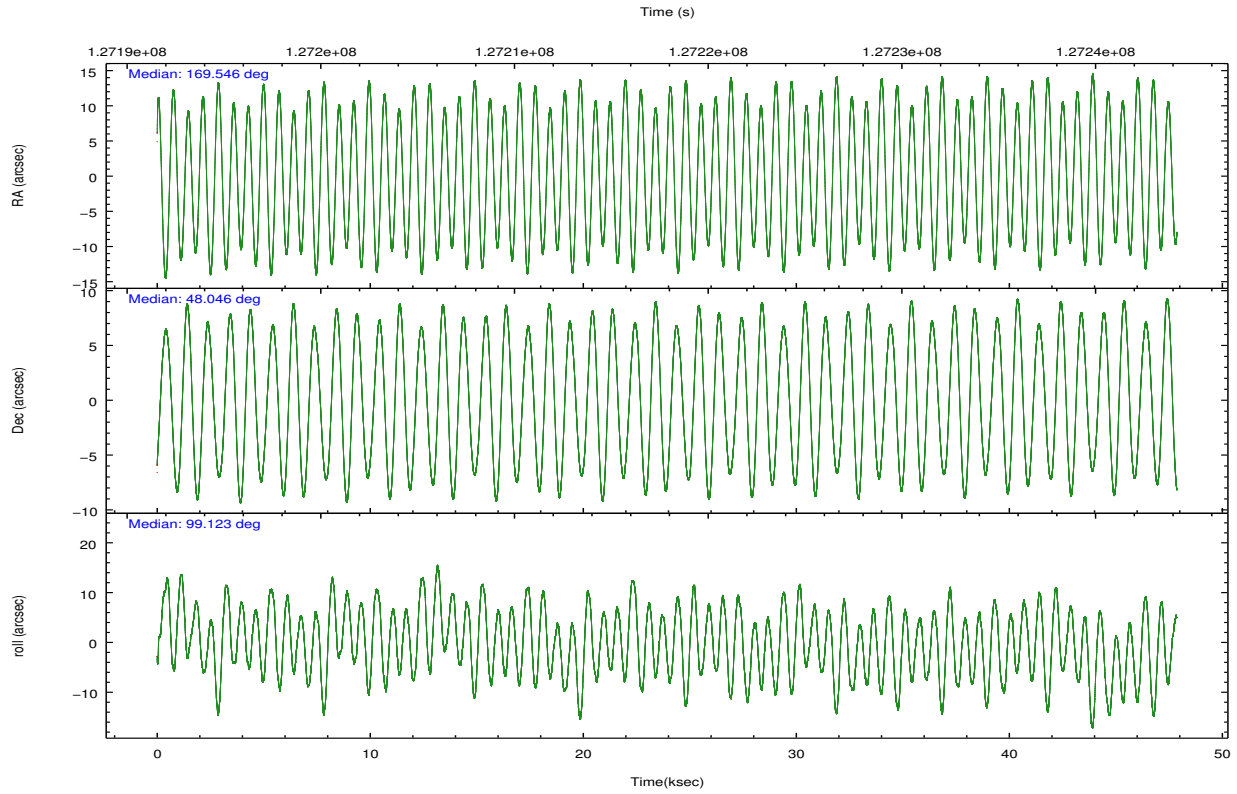
	ccd 2	ccd 3	ccd 5	ccd 6	ccd 7	ccd 8		ccd 2	ccd 3	ccd 5	ccd 6	ccd 7	ccd 8
level 1 events	378876	353965	497925	376814	404620	721194	grade 0 events	24028	21532	51531	24333	18148	110473
rejected events	320934	299615	245701	317910	222481	363671		6%	6%	10%	6%	4%	15%
rejected %	84%	84%	49%	84%	54%	50%	grade 1 events	213	158	1091	190	441	862
								0%	0%	0%	0%	0%	0%
							grade 2 events	16142	14970	67830	16529	37087	55840
								4%	4%	13%	4%	9%	7%
							grade 3 events	3282	3475	11331	3691	16087	59521
								0%	0%	2%	0%	3%	8%
							grade 4 events	4195	3615	10727	3632	16023	52480
								1%	1%	2%	0%	3%	7%
							grade 5 events	10299	11196	34711	12228	36467	19152
								2%	3%	6%	3%	9%	2%
							grade 6 events	10304	10766	110853	10725	94818	79237
								2%	3%	22%	2%	23%	10%
							grade 7 events	310413	288253	209851	305486	185549	343629
								81%	81%	42%	81%	45%	47%

2.2 Compared Parameters

Parameter	Planned	Actual	Parameter	Planned	Actual
Instrument	ACIS	ACIS	Obspar format version number	7	7
Detector	ACIS-235678	ACIS-235678	Obspar file type	PREDICTED	ACTUAL
Grating	NONE	NONE	Obspar update status	NONE	UPDATED
Data mode	VFAINT	VFAINT	Number of optional ACIS chips dropped	0	0
Observation mode	POINTING	POINTING	On-chip summing requested	N	N
[deg] Pointing RA	169.571365	169.5452633426712	Subarray requested	NONE	NONE
[deg] Pointing Dec	48.025530	48.04647038803255	Alternating exposures requested	N	N
[deg] Pointing Roll	98.954974	99.13100537405408	[s] Primary exposure time	0.000000	3.2
[mm] SIM focus pos	-0.684267	-0.6828225247311905			
[mm] SIM defocus	0	0.001444936568705701			
[mm] SIM translation stage pos	-190.132523	-190.1400660498719			
[mm] SIM translation stage offset	0	0.00754346686406393			
[s] Observation start time (MET)	127195144.184000	127193679.30056			
Observation start date	2002-01-12T03:58:00	2002-01-12T03:34:39			
[s] Observation end time (MET)	127241544.184000	127242125.92751			
Observation end date	2002-01-12T16:51:20	2002-01-12T17:02:05			
Read mode	TIMED	TIMED			

2.3 Aspect



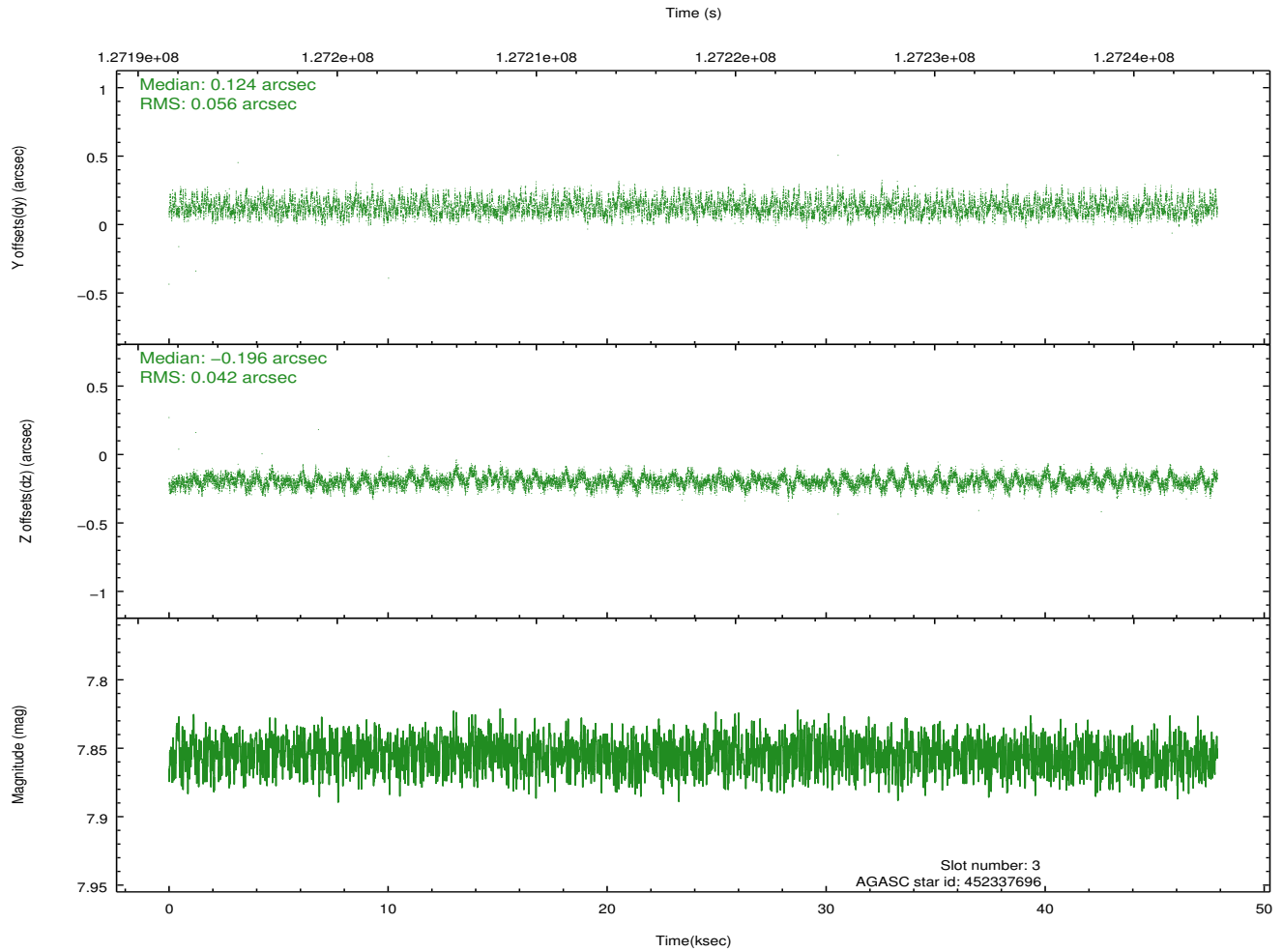
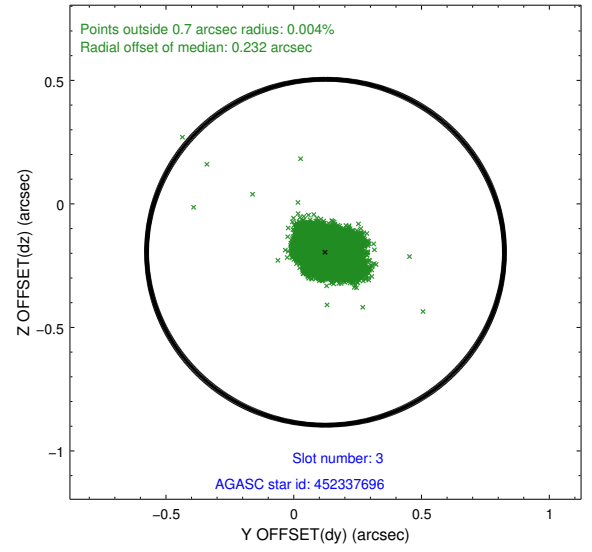
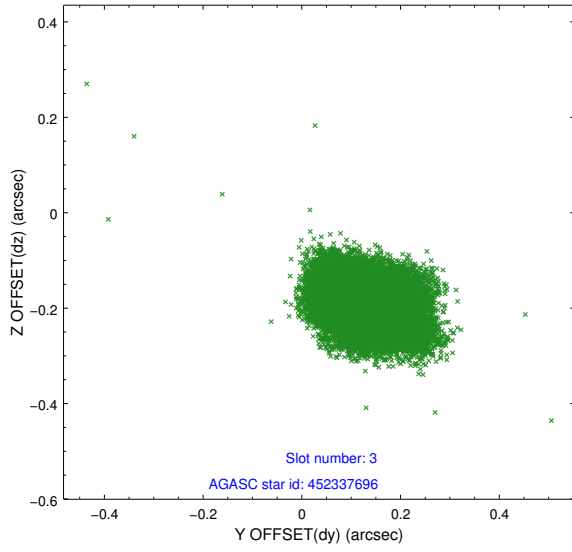


Slot Statistics

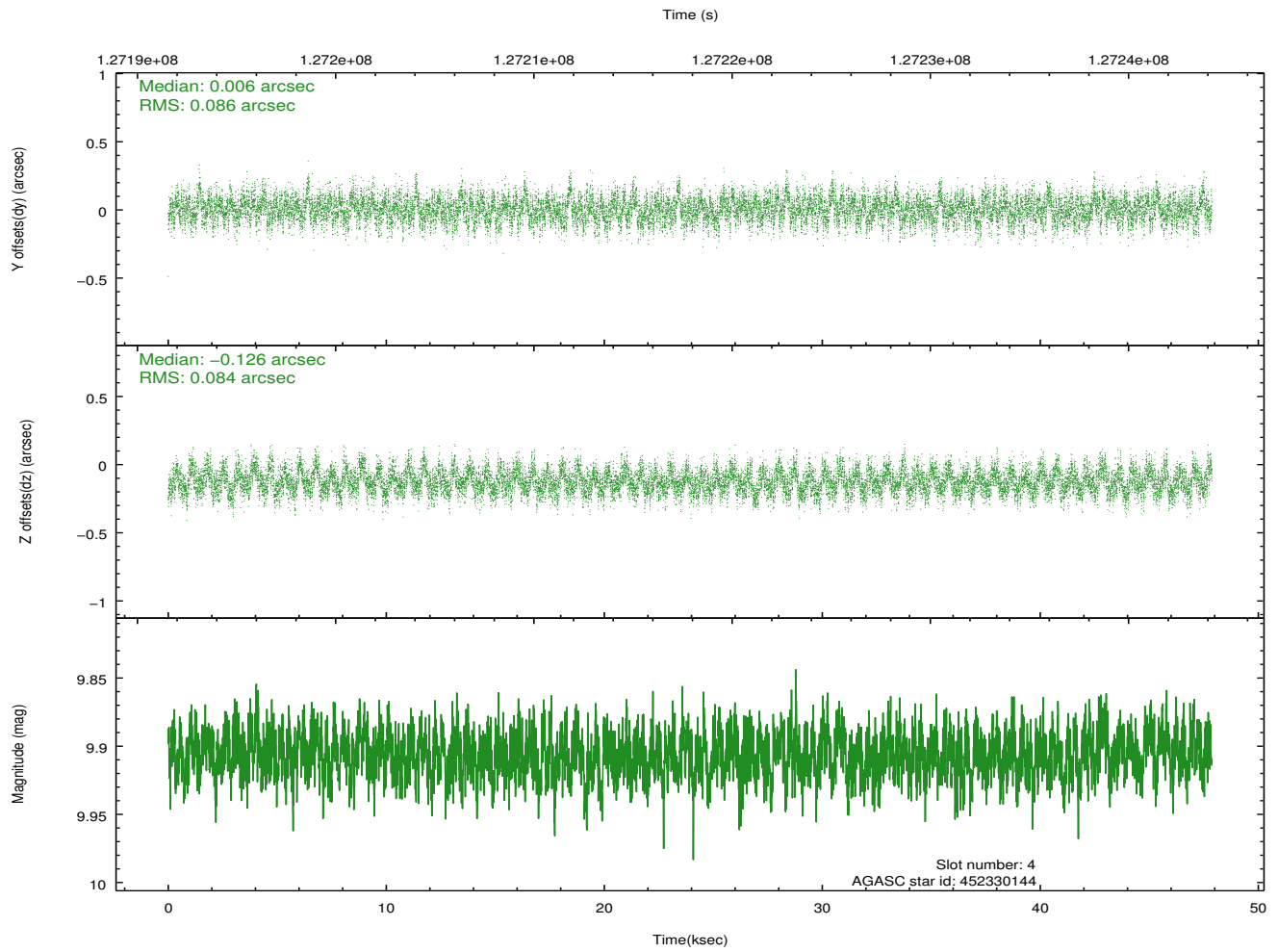
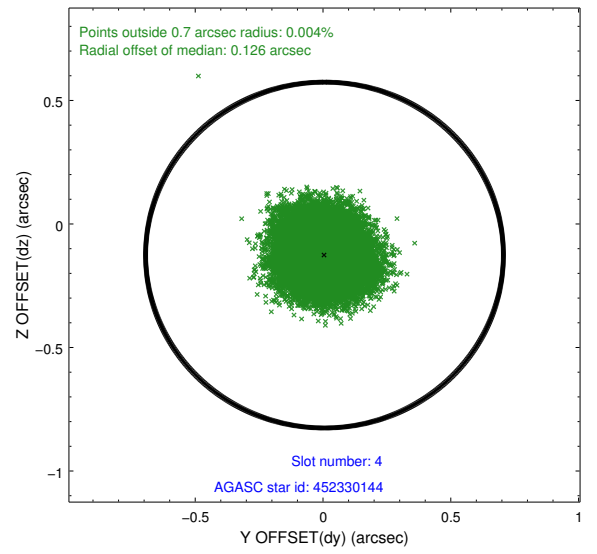
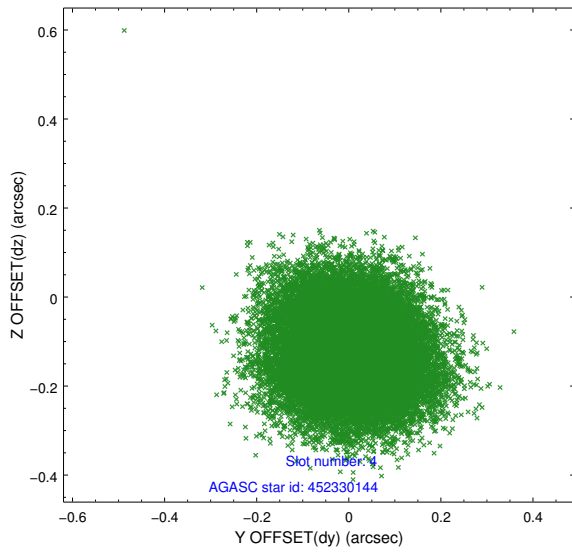
slot	status	id	mag	n_pts	med_dy	med_dz	dr1	dr2	ra	dec	mean_y	mean_z
0	FID	ACIS-S-2	7.12	11676	-0.022	0.006	0.007	0.012	0.000000	0.000000	-755.53	-1727.89
1	FID	ACIS-S-4	7.20	11674	-0.028	0.009	0.006	0.010	0.000000	0.000000	2157.73	180.64
2	FID	ACIS-S-5	7.24	11676	0.018	-0.007	0.007	0.012	0.000000	0.000000	-1808.37	174.24
3	GUIDE	452337696	7.85	23350	0.124	-0.196	0.074	0.119	168.869582	47.479497	-1668.43	1991.87
4	GUIDE	452330144	9.91	23338	0.006	-0.126	0.129	0.204	169.116291	48.616983	2274.96	739.05
5	GUIDE	452329856	10.11	23338	-0.195	0.346	0.136	0.222	170.088304	48.576176	1770.85	-1524.08
6	GUIDE	452335192	9.86	23292	0.079	0.058	0.142	0.242	170.184144	47.953835	-478.61	-1419.45
7	GUIDE	452330336	9.73	23330	-0.017	-0.093	0.111	0.178	168.787124	48.590922	2310.57	1527.37

2.4 Star Slots

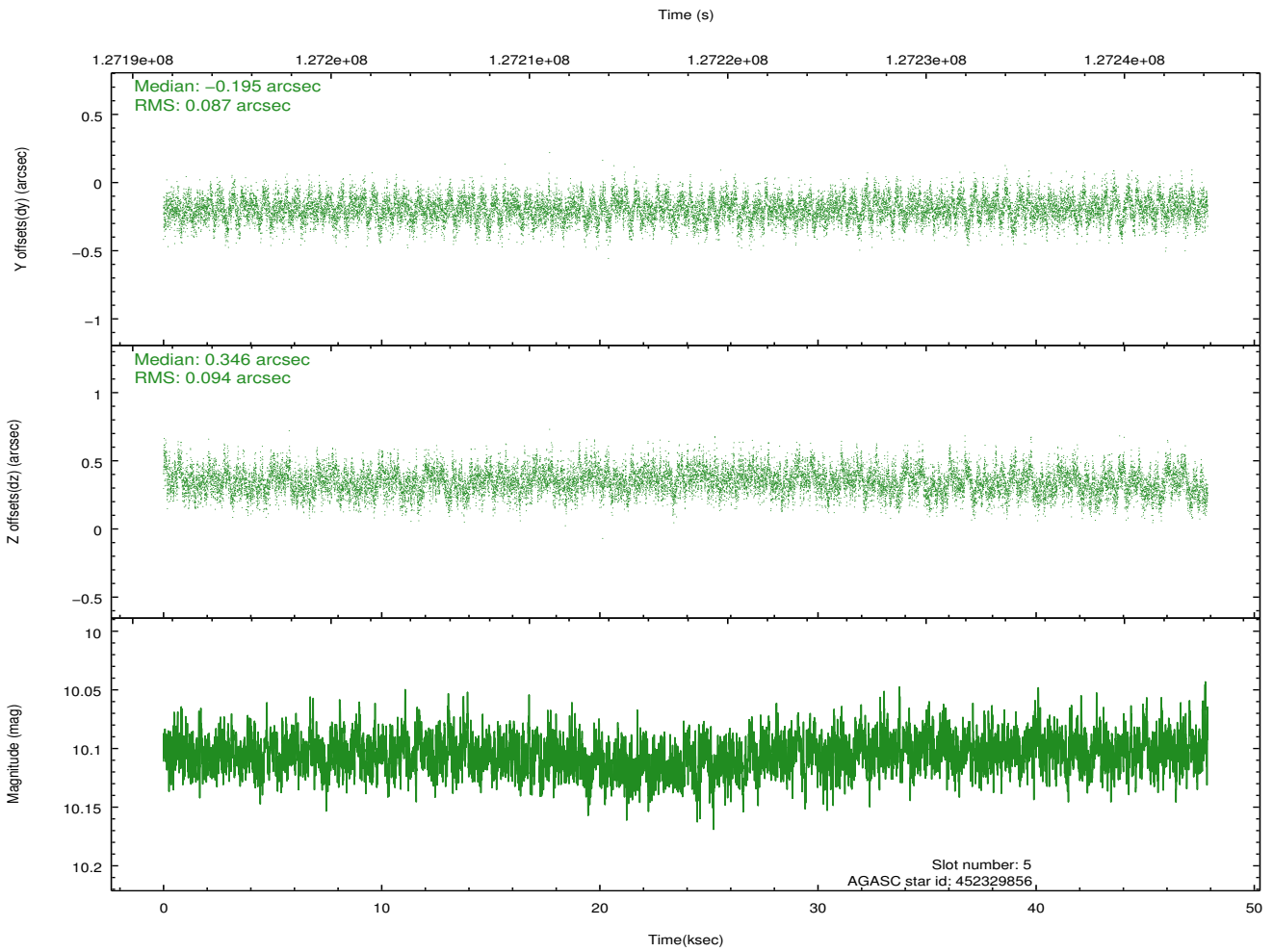
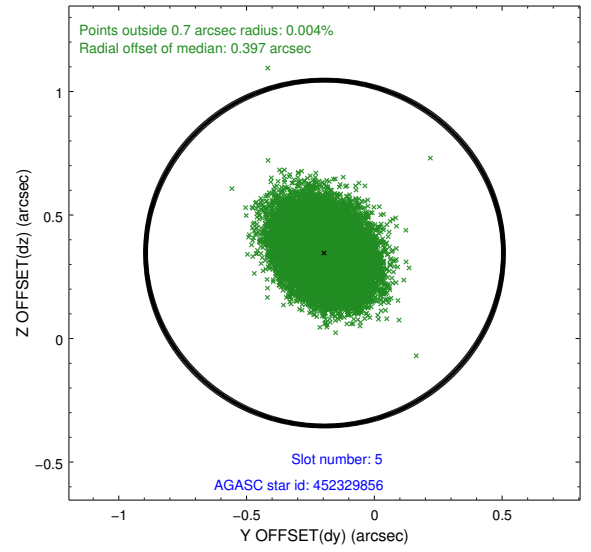
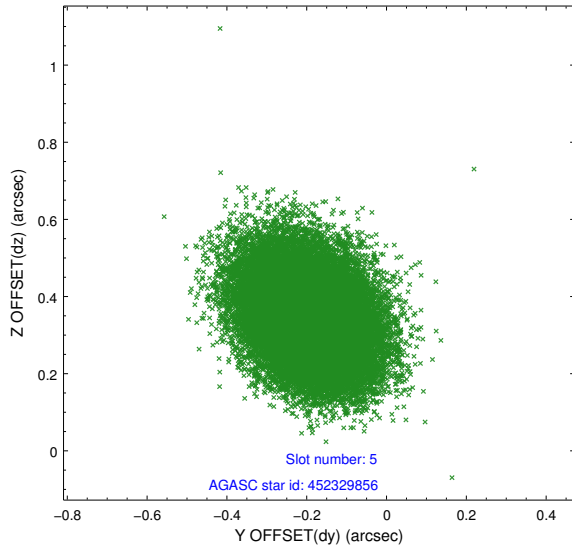
2.4.1 Slot 3



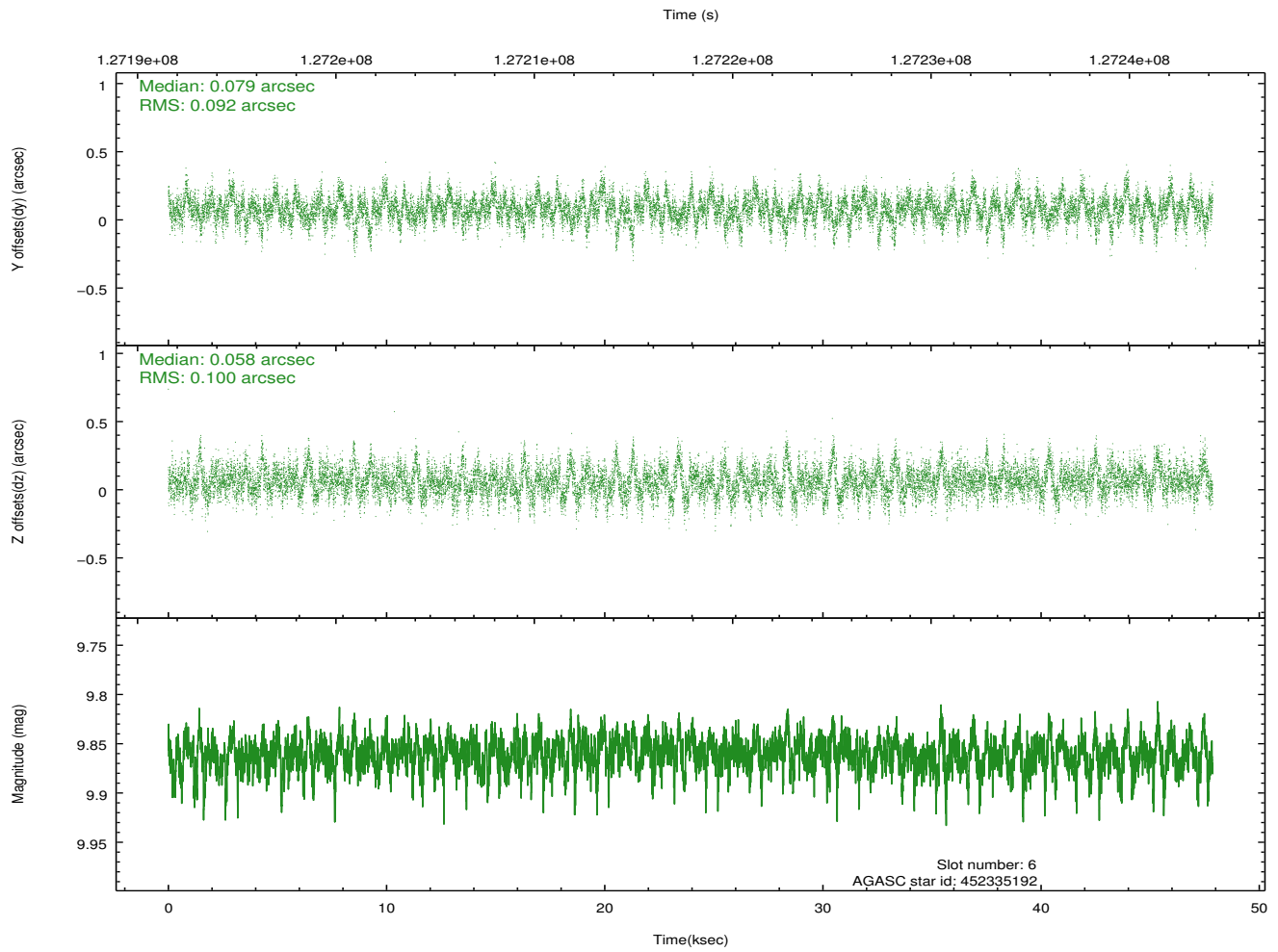
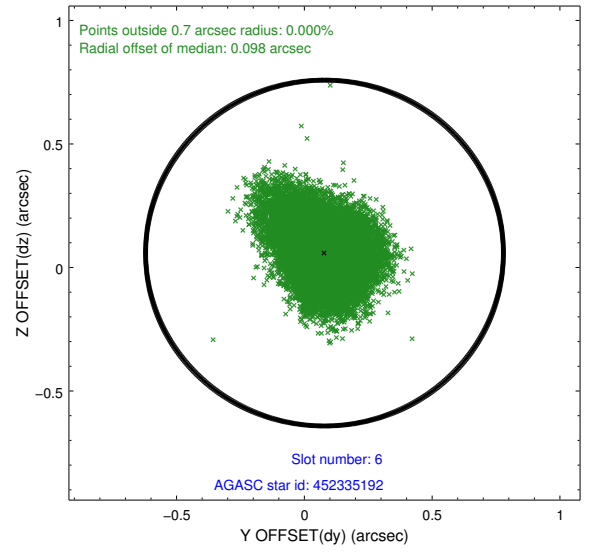
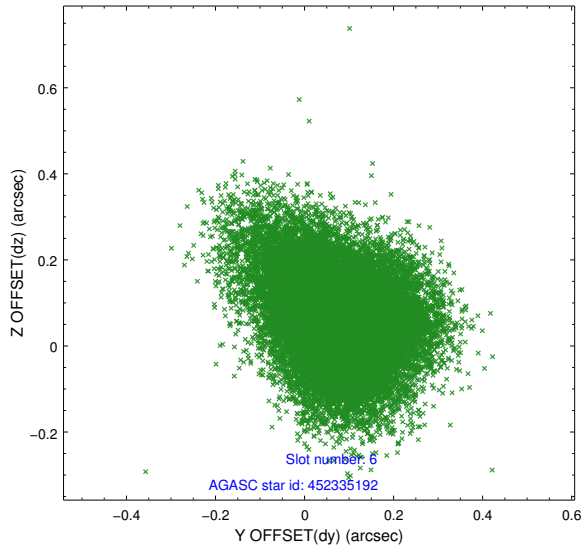
2.4.2 Slot 4



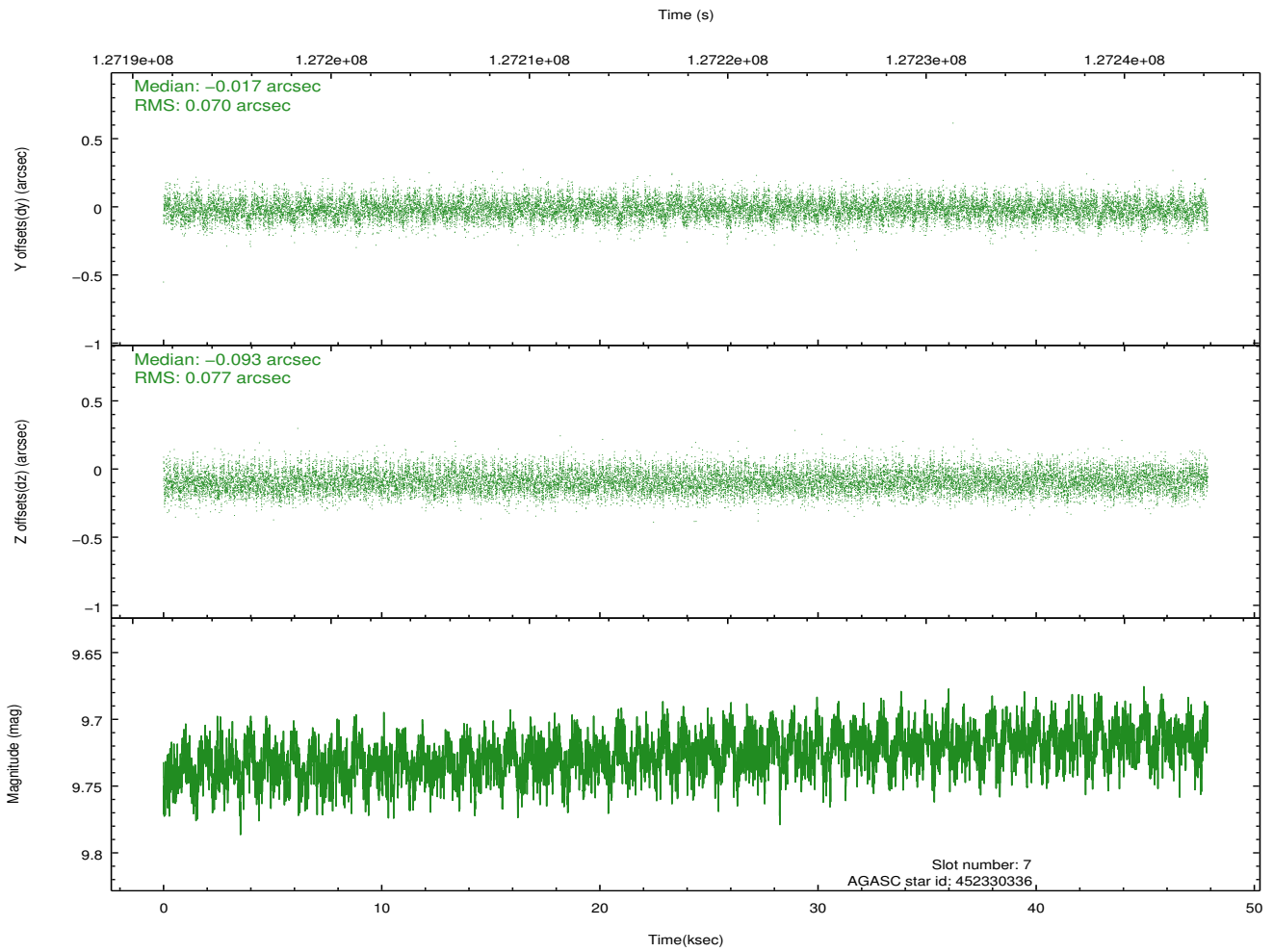
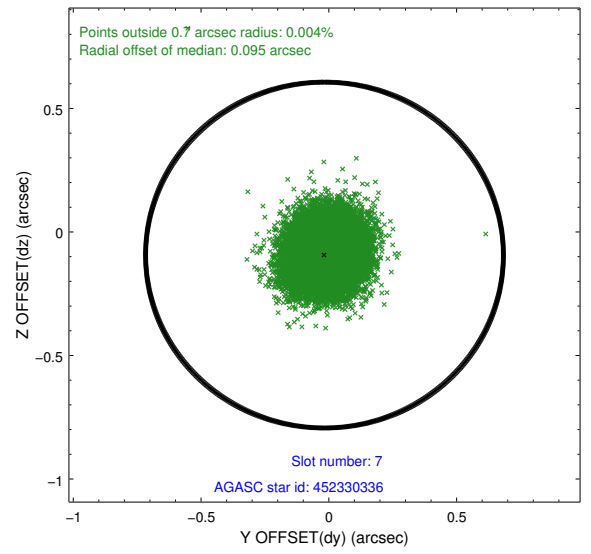
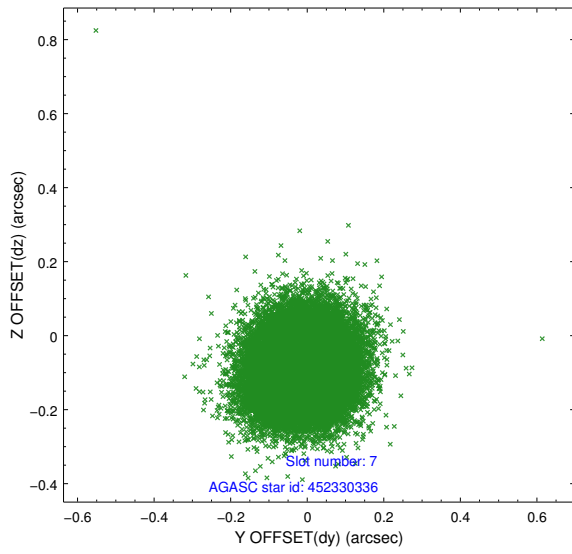
2.4.3 Slot 5



2.4.4 Slot 6

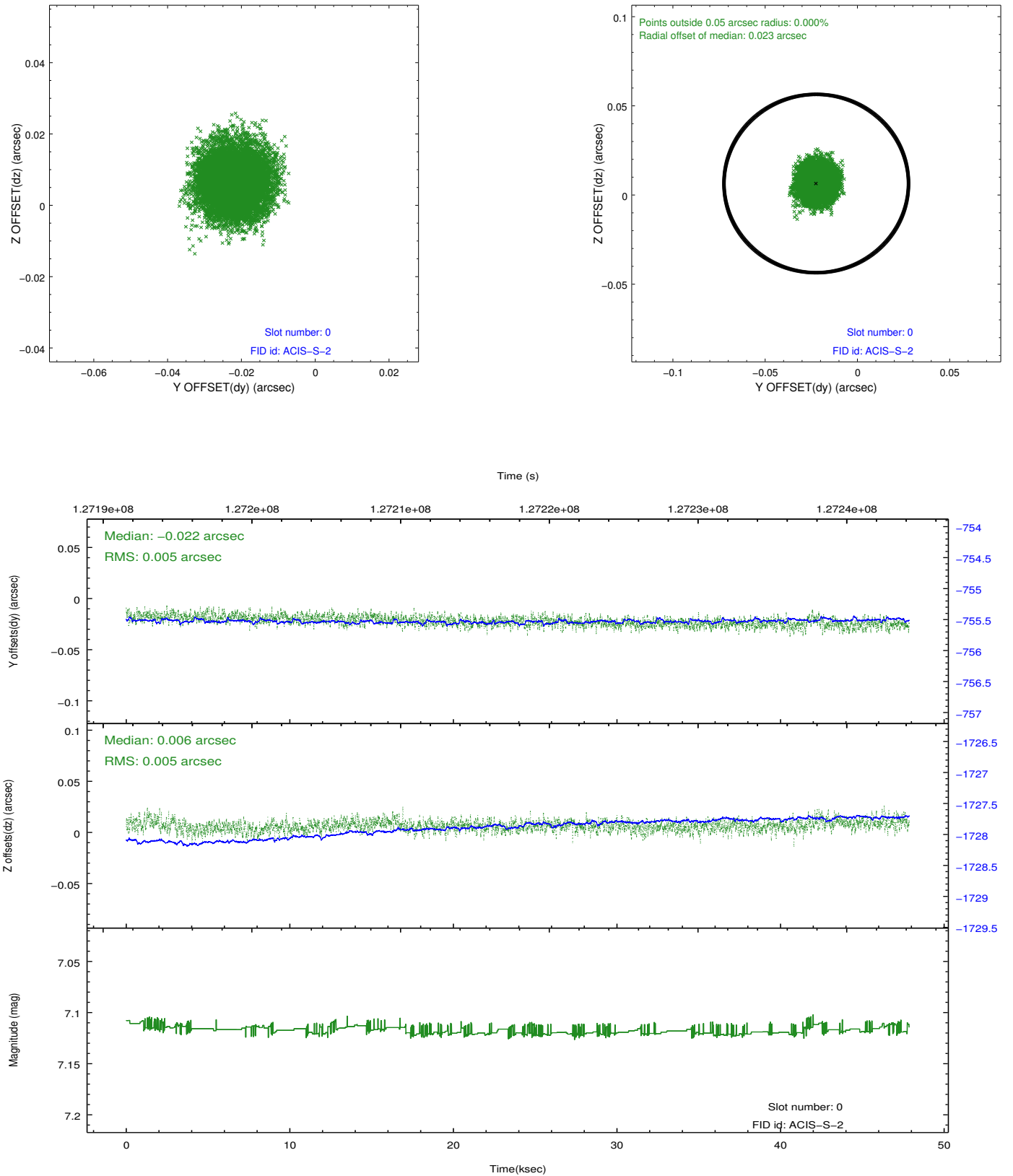


2.4.5 Slot 7

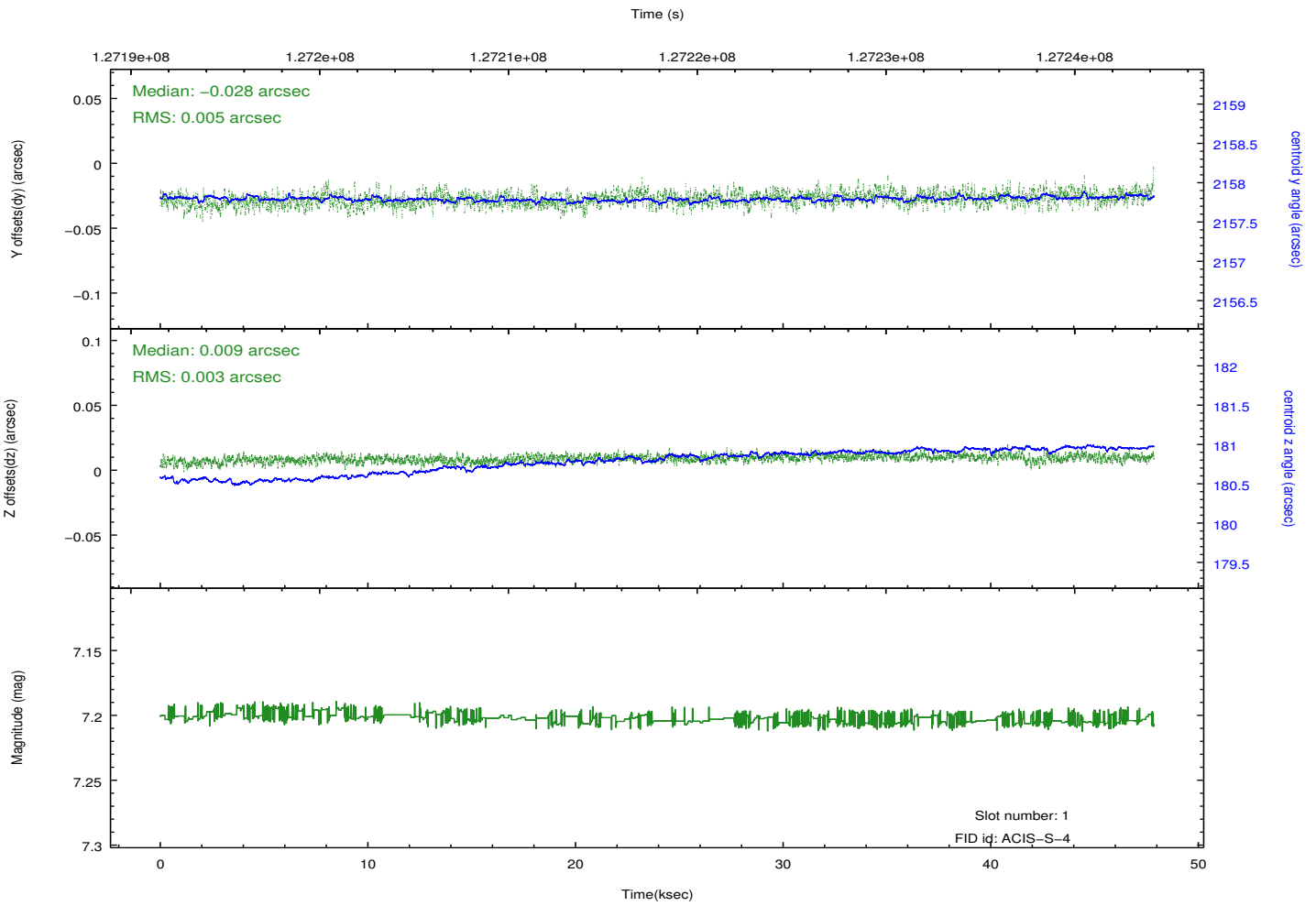
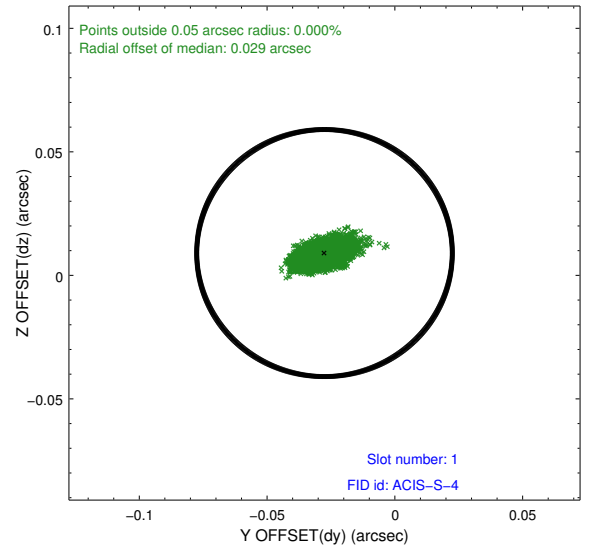
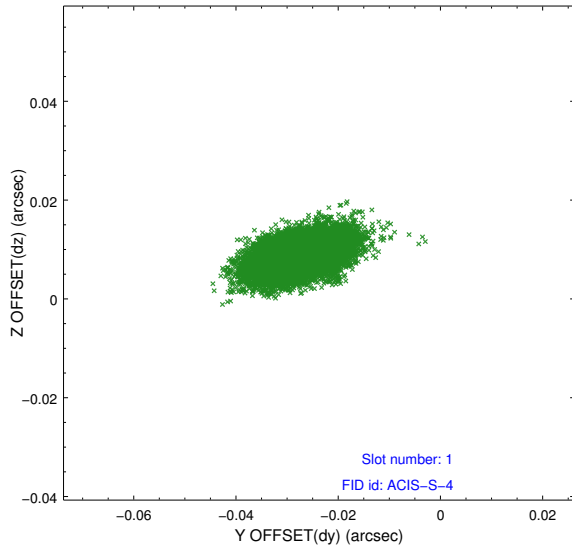


2.5 FID Slots

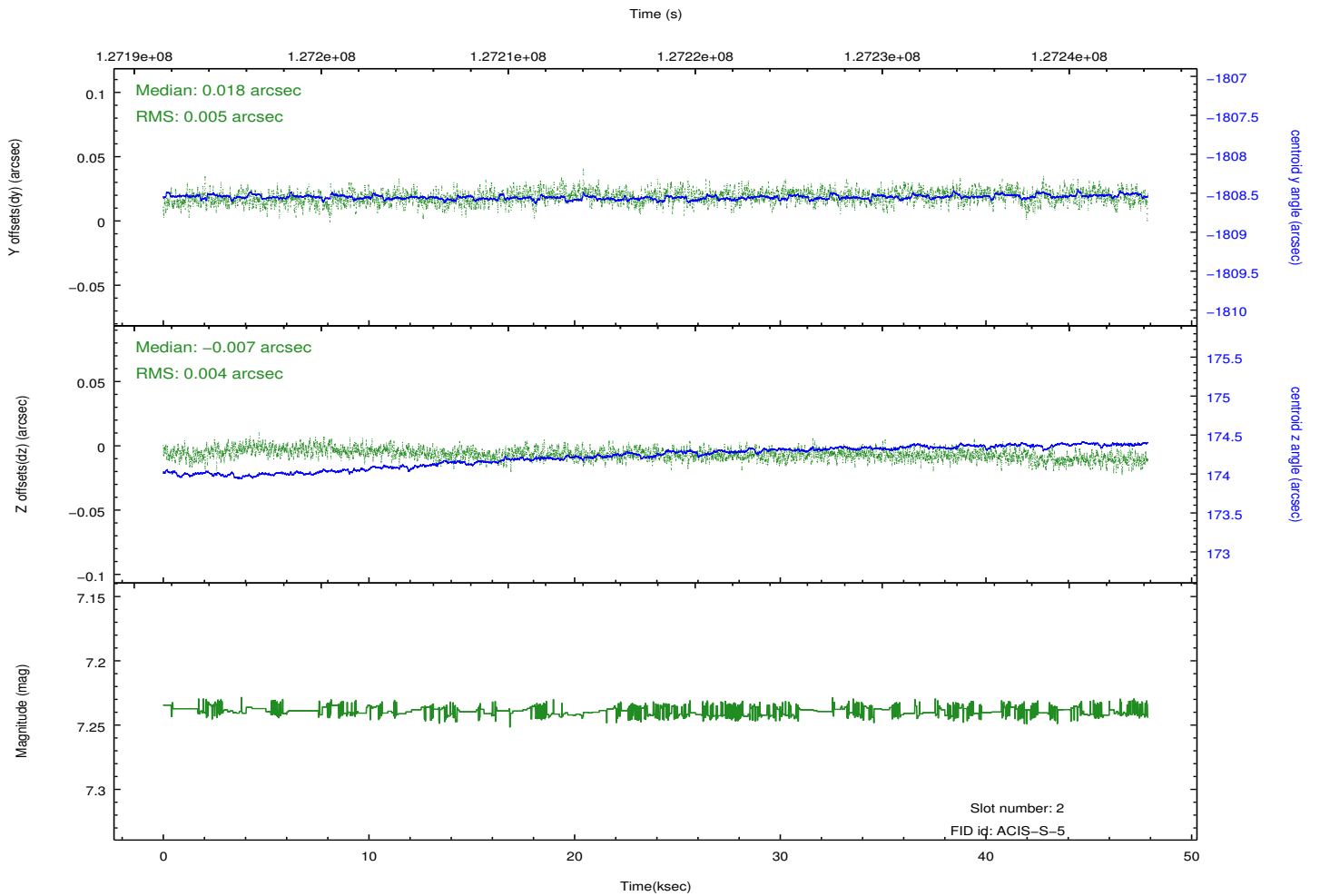
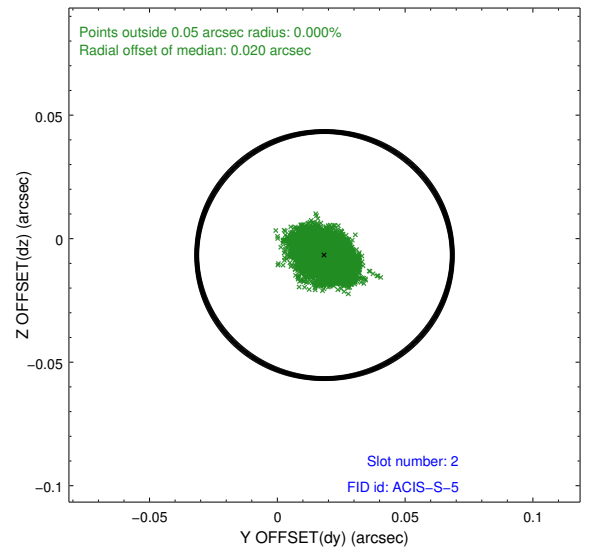
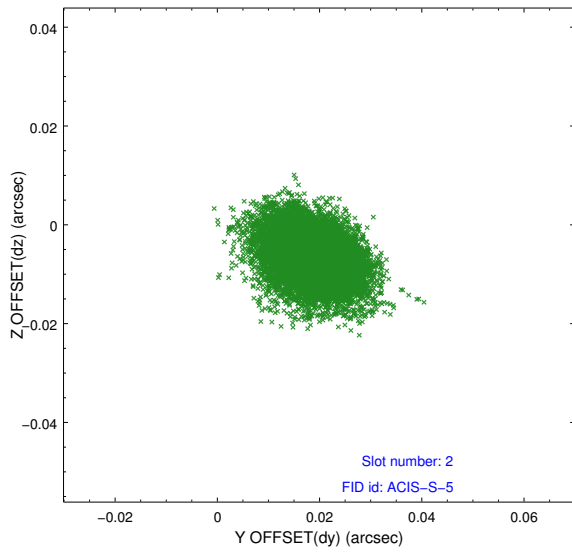
2.5.1 Slot 0



2.5.2 Slot 1



2.5.3 Slot 2



A Summary

A.1 Status

V&V Scientist	Beth Sundheim
V&V Date (YYYY-MM-DD)	2012.10.02
V&V Edition	1
V&V Disposition and Status	OK
V&V Charge Time	46.361

A.2 Comments

Joint proposal with HST.