

V&V Reference Report

L2 ASCDS Version : 8.4.5

Observation 3432 - L2 Version 3
Chandra X-Ray Center

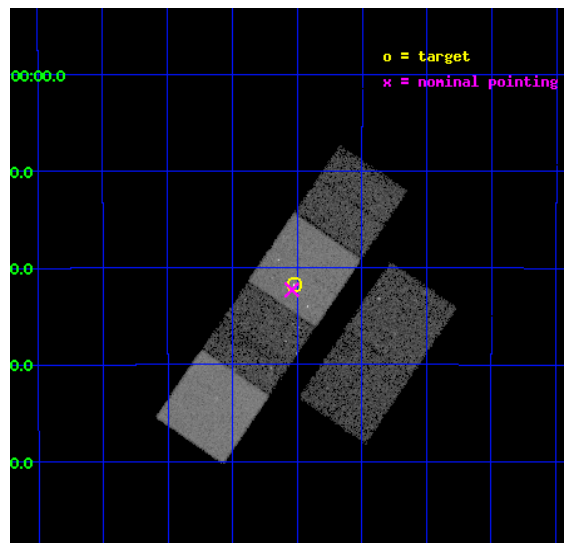
L2 Processing Date : Oct 1 2012

Contents

1	Front	2
2	OBI	3
2.1	OBI	3
2.1.1	Images	3
2.1.2	Bias	3
2.1.3	Parameters	4
2.1.4	Events	4
2.2	Compared Parameters	5
2.3	Aspect	6
2.4	Star Slots	9
2.4.1	Slot 3	9
2.4.2	Slot 4	10
2.4.3	Slot 5	11
2.4.4	Slot 6	12
2.4.5	Slot 7	13
2.5	FID Slots	14
2.5.1	Slot 0	14
2.5.2	Slot 1	15
2.5.3	Slot 2	16
A	Summary	17
A.1	Status	17
A.2	Comments	17

1 Front

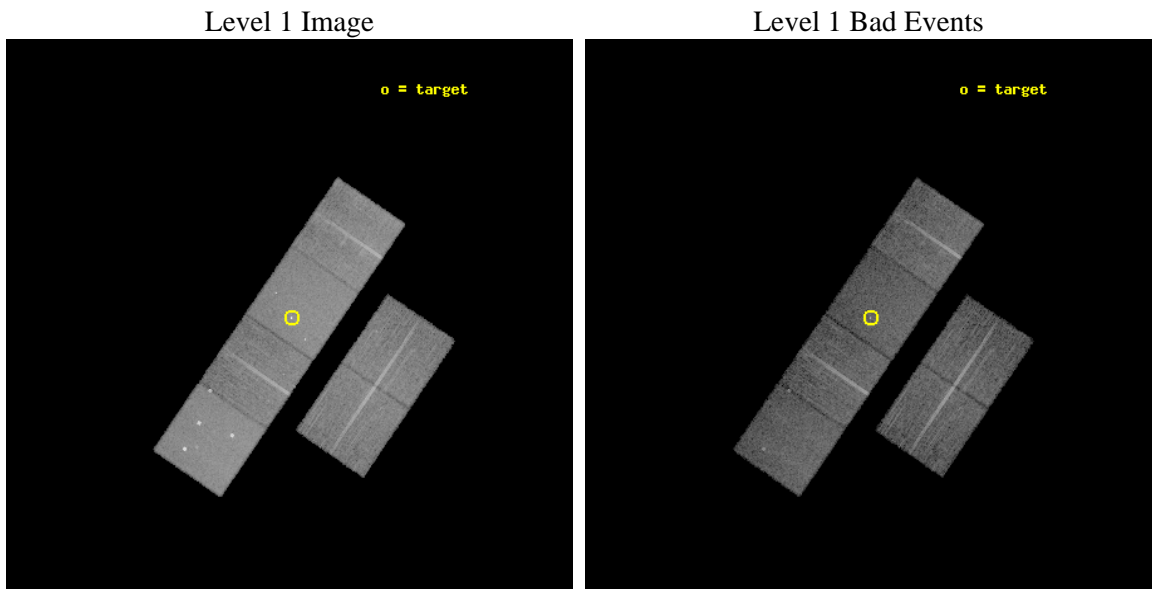
seq_num	600168	Sequence number
obs_id	3432	Observation id
title	THE X-RAY PROPERTIES OF ULTRALUMINOUS GALAXIES: COSMOLOGICAL IMPLICATIONS	Proposal title
observer	Dr. Tim Heckman	Principal investigator
object	IRAS 05189-2524	Source name
dtycycle	0	
cycle	P	events from which exps? Prim/Second/Both
ra_targ	80.255833	Observer's specified target RA [deg]
dec_targ	-25.362472	Observer's specified target Dec [deg]
ra_nom	80.260241919482	Nominal RA [deg]
dec_nom	-25.371363633988	Nominal Dec [deg]
roll_nom	304.35817513932	Nominal Roll [deg]
revision	3	Processing version of data
ontime	15052.800014004	Sum of GTIs [s]
livetime	14862.192396519	Livetime [s]
ontime2	15049.559043735	Sum of GTIs [s]
ontime3	15052.800014004	Sum of GTIs [s]
ontime5	15052.800014004	Sum of GTIs [s]
ontime6	15052.800014004	Sum of GTIs [s]
ontime7	15052.800014004	Sum of GTIs [s]
ontime8	15046.318203002	Sum of GTIs [s]
l2events	153181	Number of level 2 events



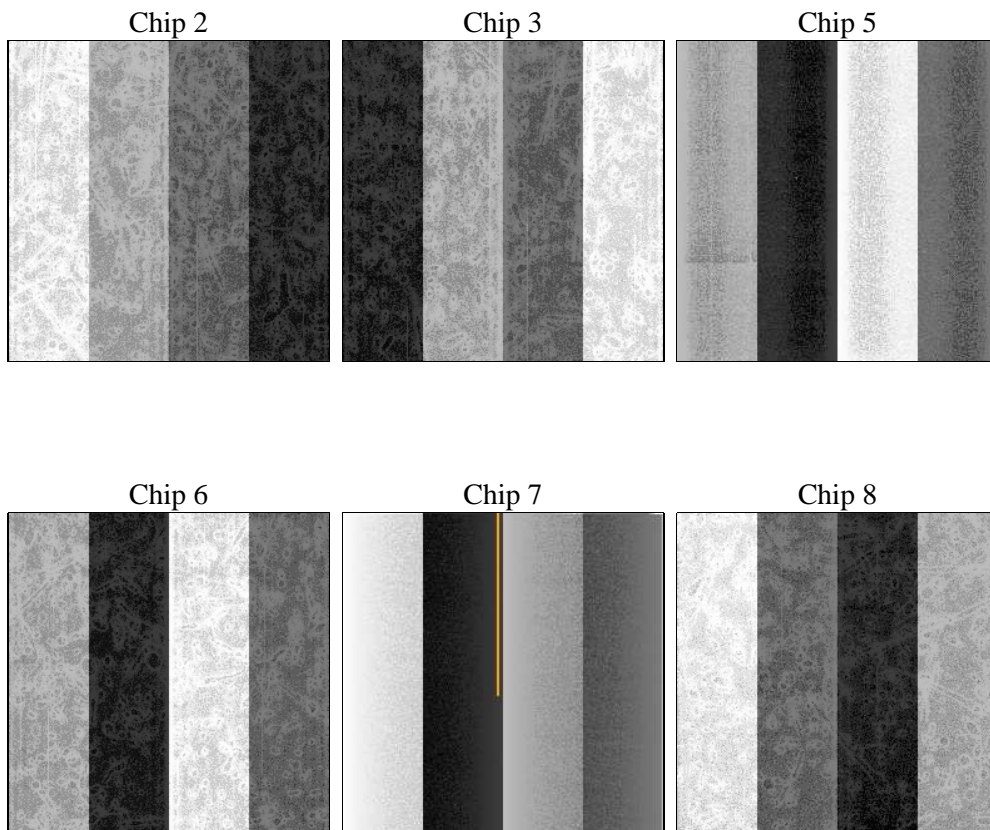
2 OBI

2.1 OBI

2.1.1 Images



2.1.2 Bias



2.1.3 Parameters

obi_num	0	Obi number	sched_exp_time	15300.000000	[s] Scheduled observation exposure time
ascdsver	8.4.5	Processing system revision	ontime	15052.800014004	Sum of GTIs [s]
caldbver	4.5.2	 	ontime2	15049.559043735	Sum of GTIs [s]
date	2012-10-01T05:57:12	Date and time of file creation	ontime3	15052.800014004	Sum of GTIs [s]
revision	3	Processing version of data	ontime5	15052.800014004	Sum of GTIs [s]
			ontime6	15052.800014004	Sum of GTIs [s]
			ontime7	15052.800014004	Sum of GTIs [s]
			ontime8	15046.318203002	Sum of GTIs [s]
			l1events	677917	Number of level 1 events

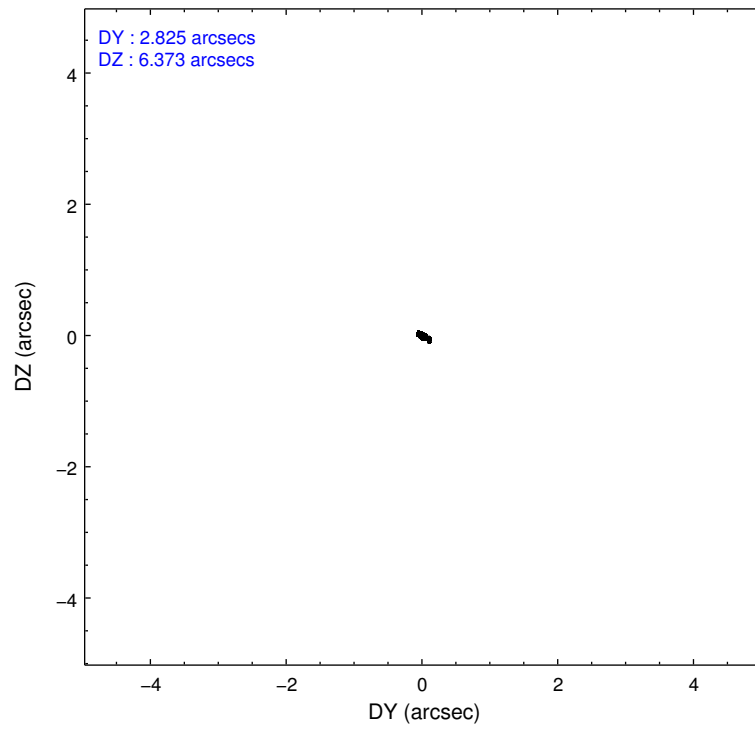
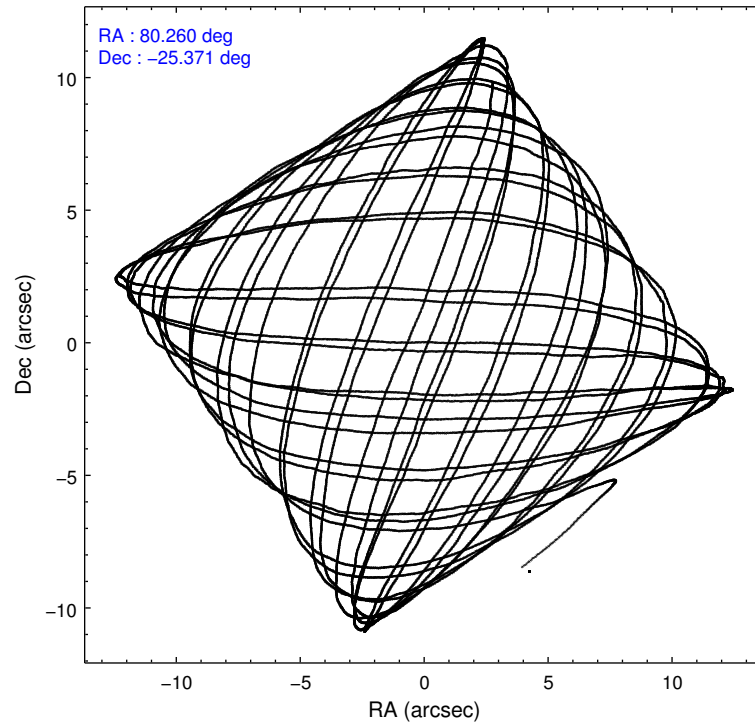
2.1.4 Events

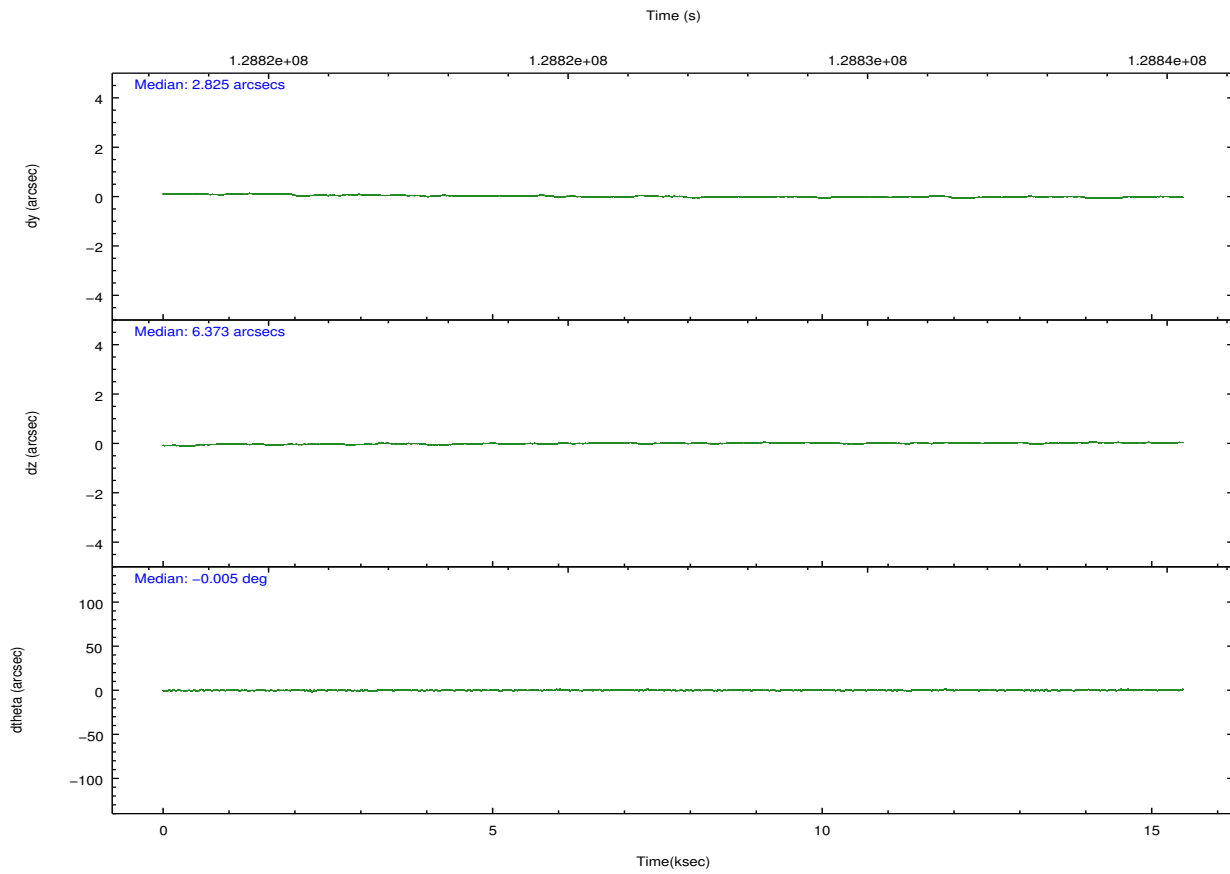
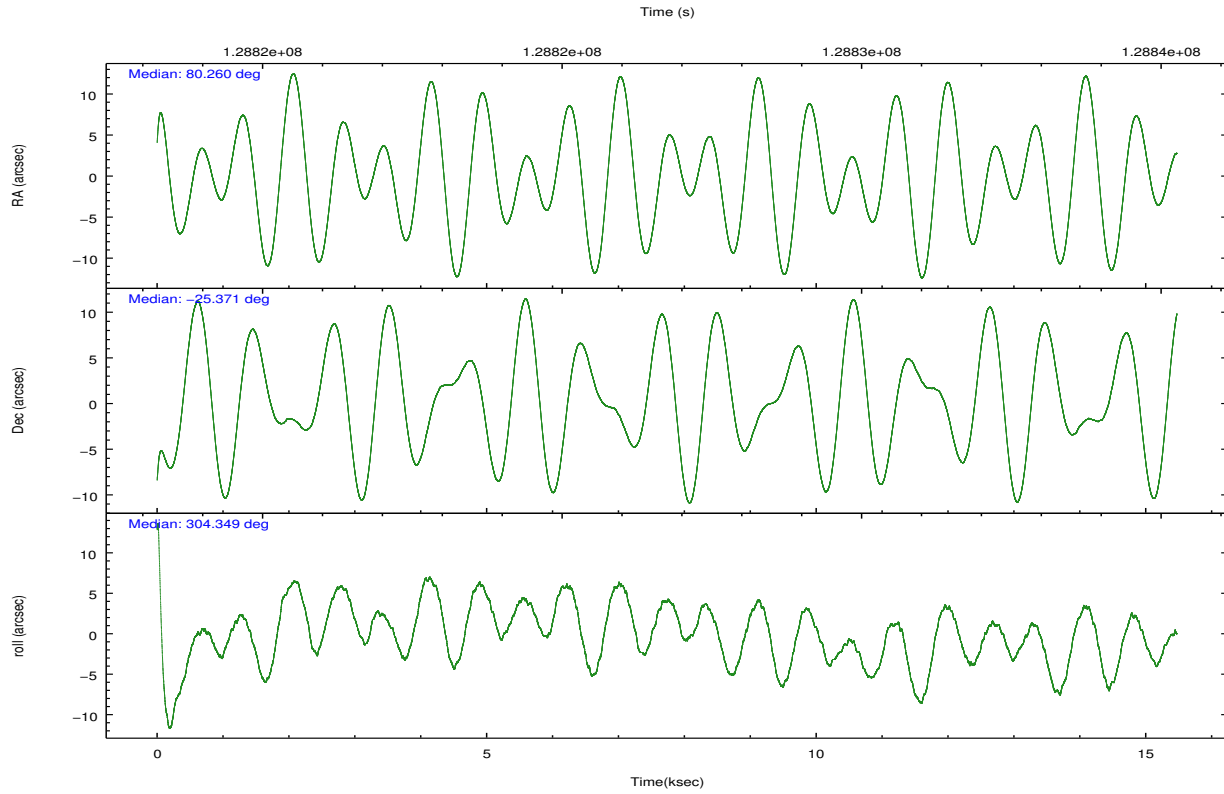
	ccd 2	ccd 3	ccd 5	ccd 6	ccd 7	ccd 8		ccd 2	ccd 3	ccd 5	ccd 6	ccd 7	ccd 8
level 1 events	96222	93284	142103	97173	126490	122645	grade 0 events	4633	5150	11489	5341	5944	8826
rejected events	85140	81582	73532	84855	71530	96027		4%	5%	8%	5%	4%	7%
rejected %	88%	87%	51%	87%	56%	78%	grade 1 events	51	50	599	61	124	78
								0%	0%	0%	0%	0%	0%
							grade 2 events	2551	2381	19628	2580	10947	5612
								2%	2%	13%	2%	8%	4%
							grade 3 events	996	1030	2529	1121	4896	2957
								1%	1%	1%	1%	3%	2%
							grade 4 events	958	1117	2443	1087	4914	2612
								0%	1%	1%	1%	3%	2%
							grade 5 events	3273	3629	9786	4233	11642	5101
								3%	3%	6%	4%	9%	4%
							grade 6 events	1951	2028	32494	2193	28278	6621
								2%	2%	22%	2%	22%	5%
							grade 7 events	81809	77899	63135	80557	59745	90838
								85%	83%	44%	82%	47%	74%

2.2 Compared Parameters

Parameter	Planned	Actual	Parameter	Planned	Actual
Instrument	ACIS	ACIS	Obspar format version number	7	7
Detector	ACIS-235678	ACIS-235678	Obspar file type	PREDICTED	ACTUAL
Grating	NONE	NONE	Obspar update status	NONE	UPDATED
Data mode	FAINT	FAINT	Number of optional ACIS chips dropped	0	0
Observation mode	POINTING	POINTING	On-chip summing requested	N	N
[deg] Pointing RA	80.232899	80.26024191948218	Subarray requested	NONE	NONE
[deg] Pointing Dec	-25.359833	-25.37136363398807	Alternating exposures requested	N	N
[deg] Pointing Roll	304.189815	304.3581751393176	[s] Primary exposure time	0.000000	3.2
[mm] SIM focus pos	-0.684267	-0.6828225247311905			
[mm] SIM defocus	0	0.001444936568705701			
[mm] SIM translation stage pos	-190.132523	-190.1425803651734			
[mm] SIM translation stage offset	0	0.01005778216563158			
[s] Observation start time (MET)	128819190.184000	128817390.57843			
Observation start date	2002-01-30T23:05:26	2002-01-30T22:36:30			
[s] Observation end time (MET)	128834490.184000	128835213.79165			
Observation end date	2002-01-31T03:20:26	2002-01-31T03:33:33			
Read mode	TIMED	TIMED			

2.3 Aspect



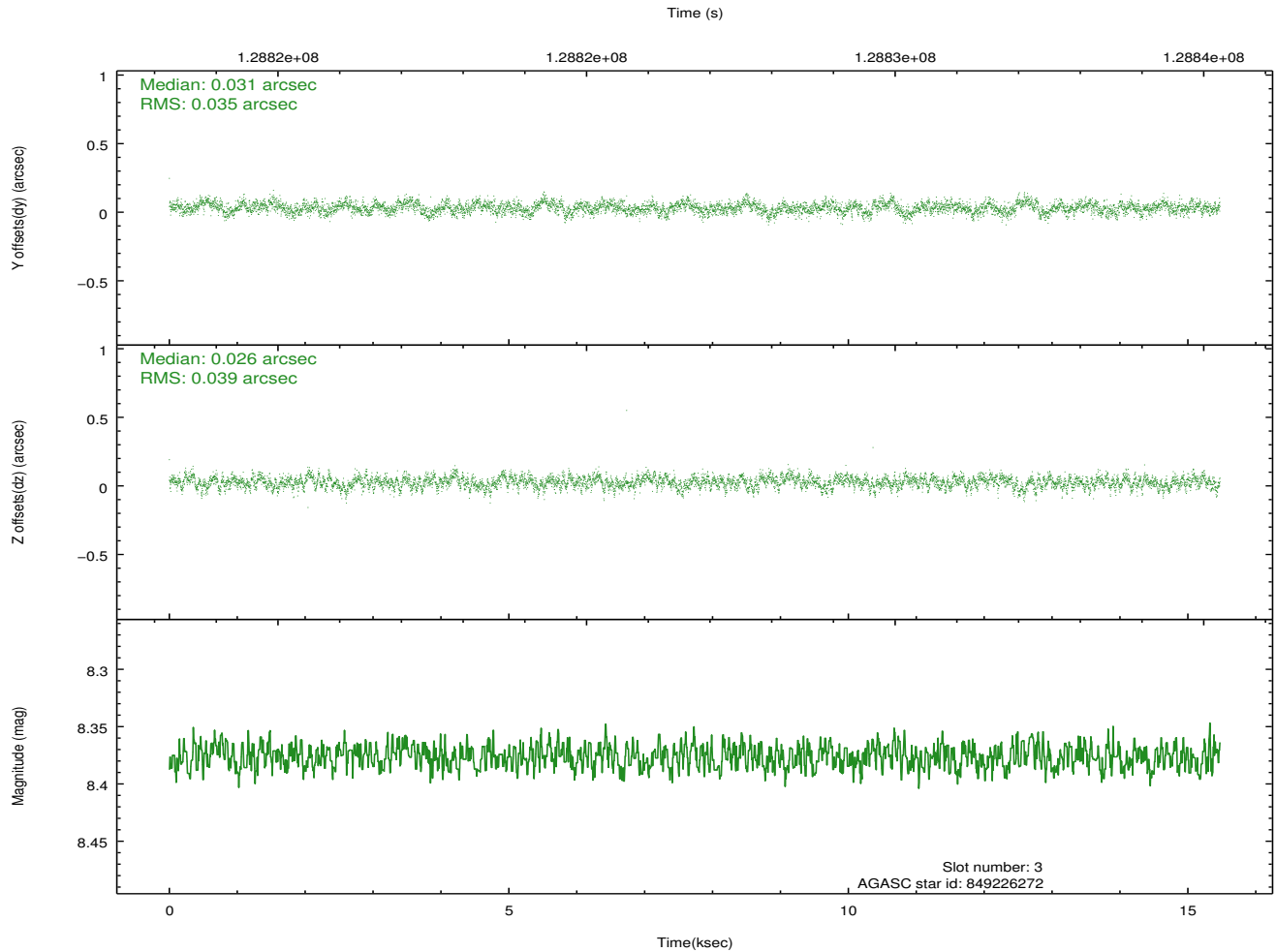
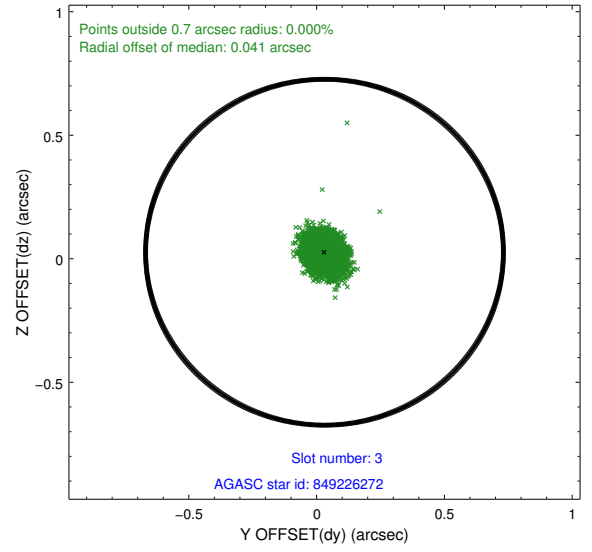
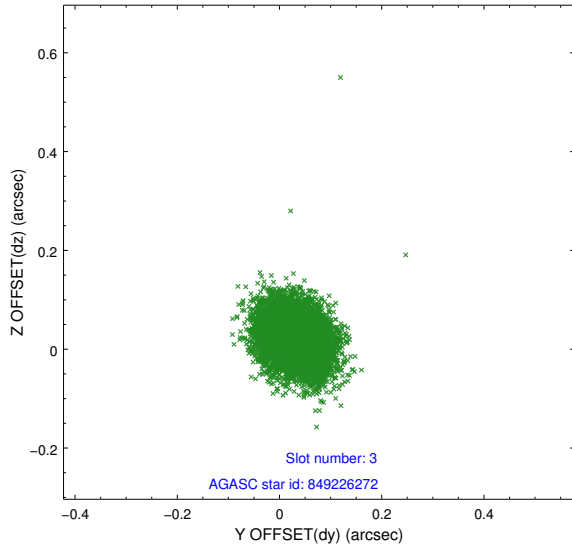


Slot Statistics

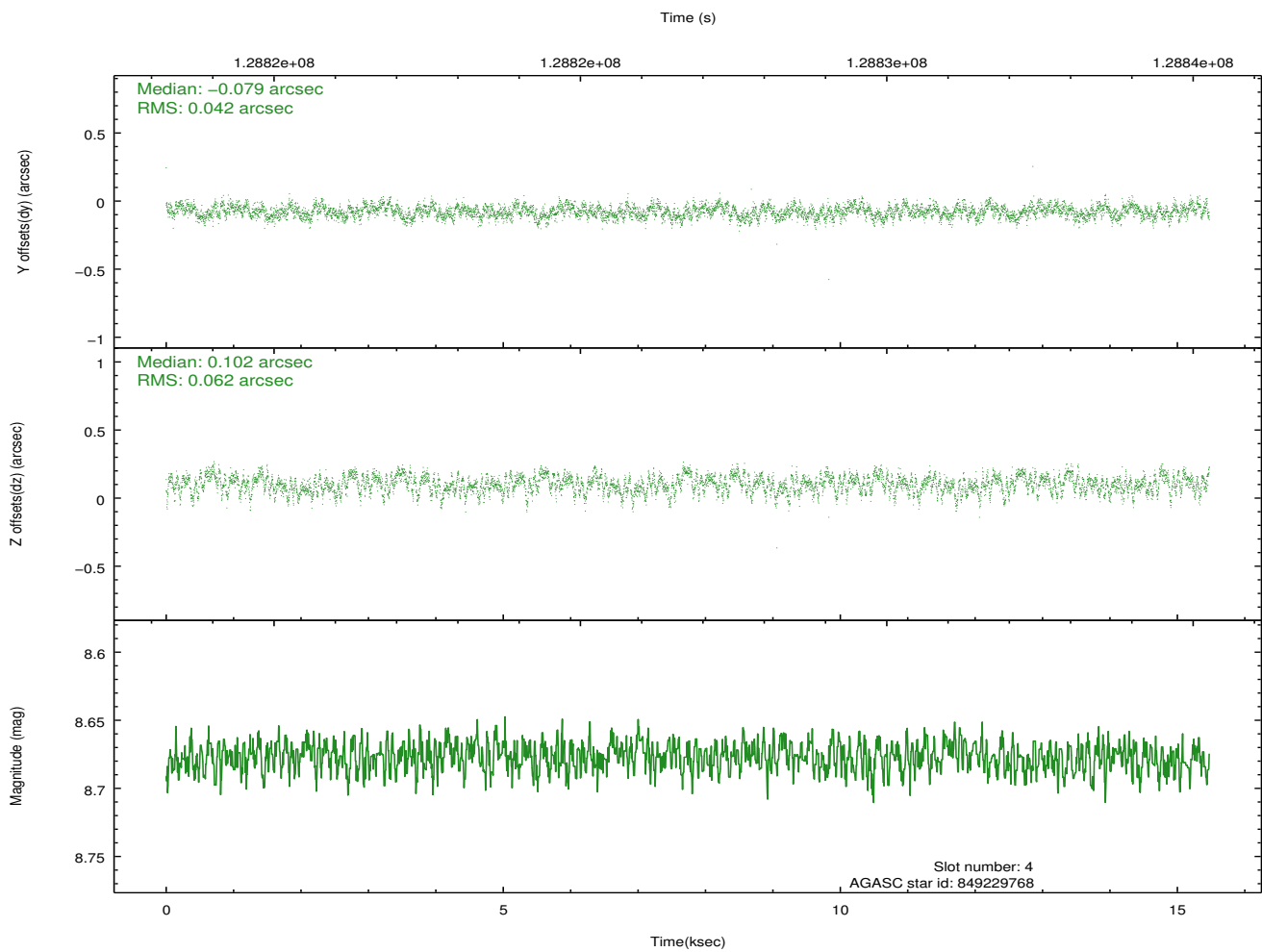
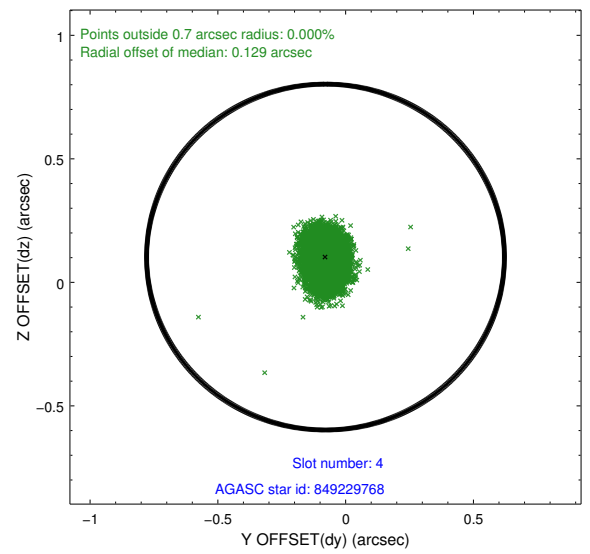
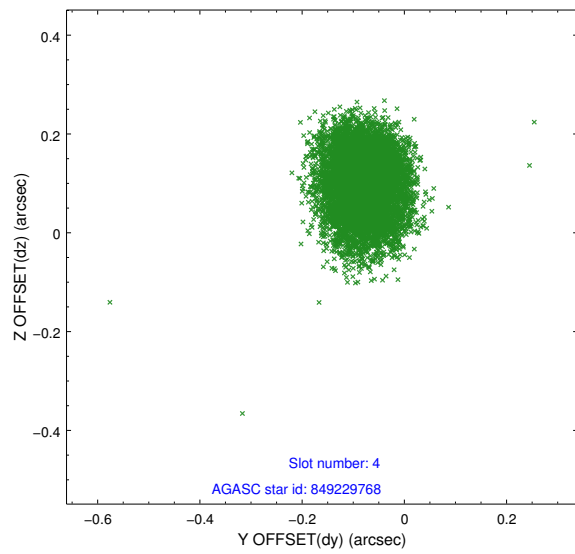
slot	status	id	mag	n_pts	med_dy	med_dz	dr1	dr2	ra	dec	mean_y	mean_z
0	FID	ACIS-S-2	7.12	3772	-0.031	0.010	0.006	0.011	0.000000	0.000000	-755.47	-1727.47
1	FID	ACIS-S-4	7.20	3772	-0.026	0.012	0.006	0.010	0.000000	0.000000	2157.64	180.77
2	FID	ACIS-S-5	7.24	3773	0.026	-0.013	0.007	0.012	0.000000	0.000000	-1807.92	174.68
3	GUIDE	849226272	8.38	7545	0.031	0.026	0.056	0.091	80.214822	-25.538553	499.78	-409.78
4	GUIDE	849229768	8.68	7545	-0.079	0.102	0.079	0.128	79.569100	-25.282300	-1439.96	-1633.54
5	GUIDE	849227312	9.11	7542	0.071	-0.114	0.076	0.123	79.976215	-25.624425	320.94	-1224.97
6	GUIDE	849221968	9.37	7547	-0.068	0.014	0.113	0.182	80.350202	-24.542512	-2217.79	1970.88
7	GUIDE	849219224	9.62	7532	0.052	-0.030	0.100	0.166	79.917999	-26.007007	1356.29	-2152.04

2.4 Star Slots

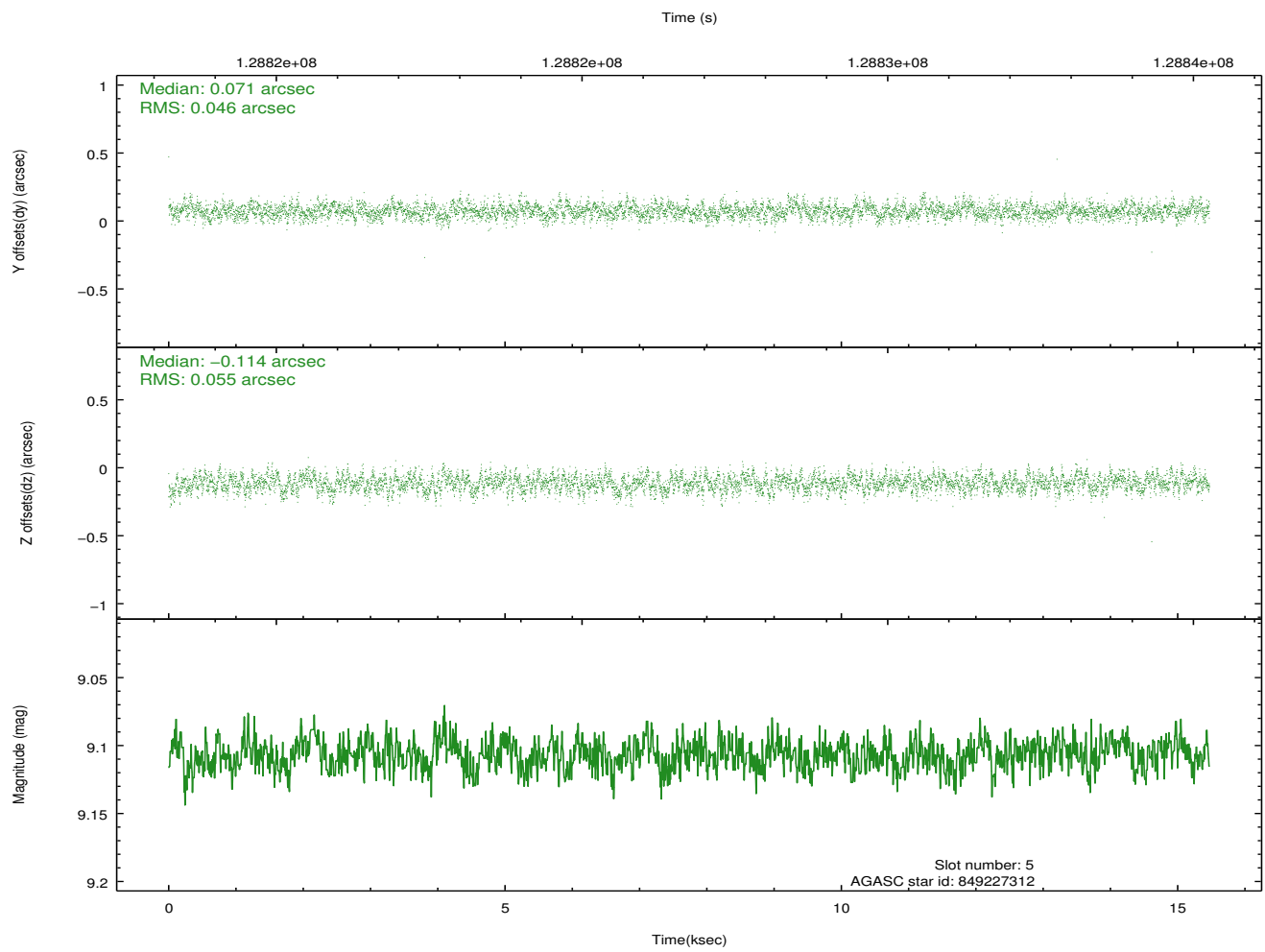
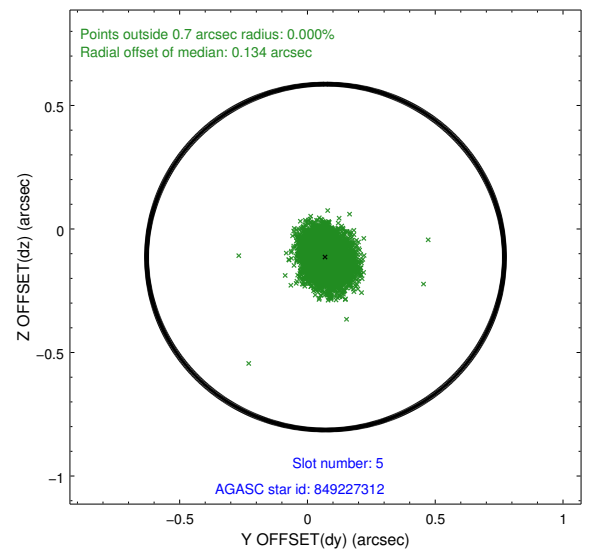
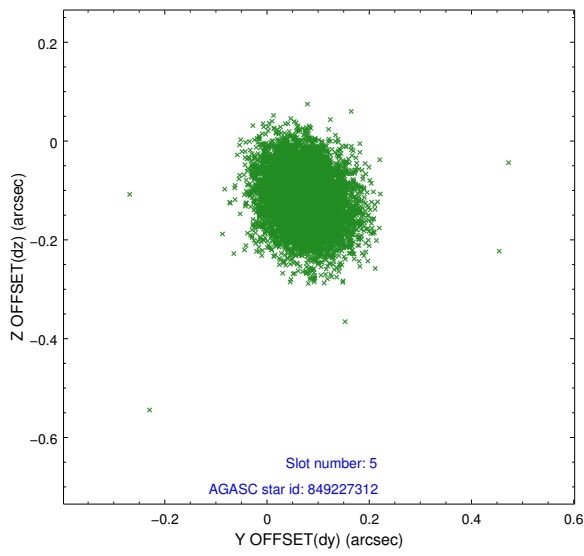
2.4.1 Slot 3



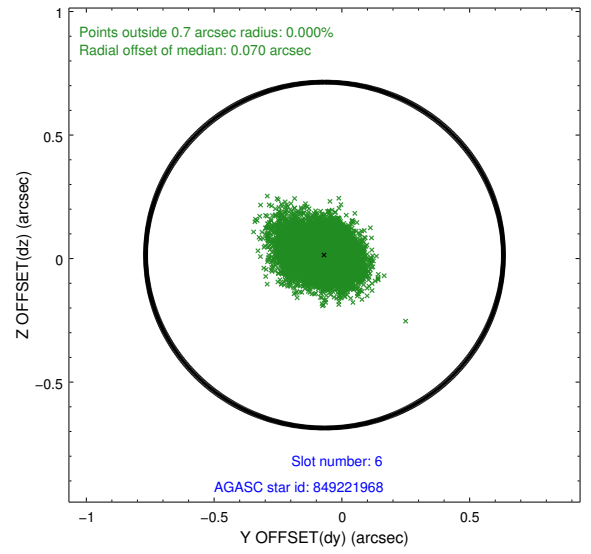
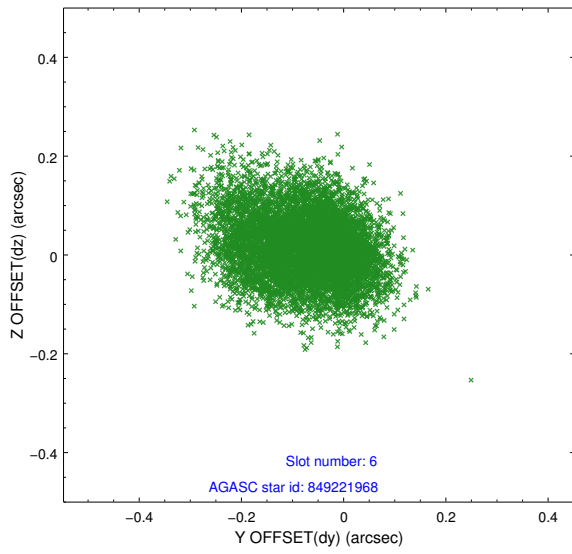
2.4.2 Slot 4



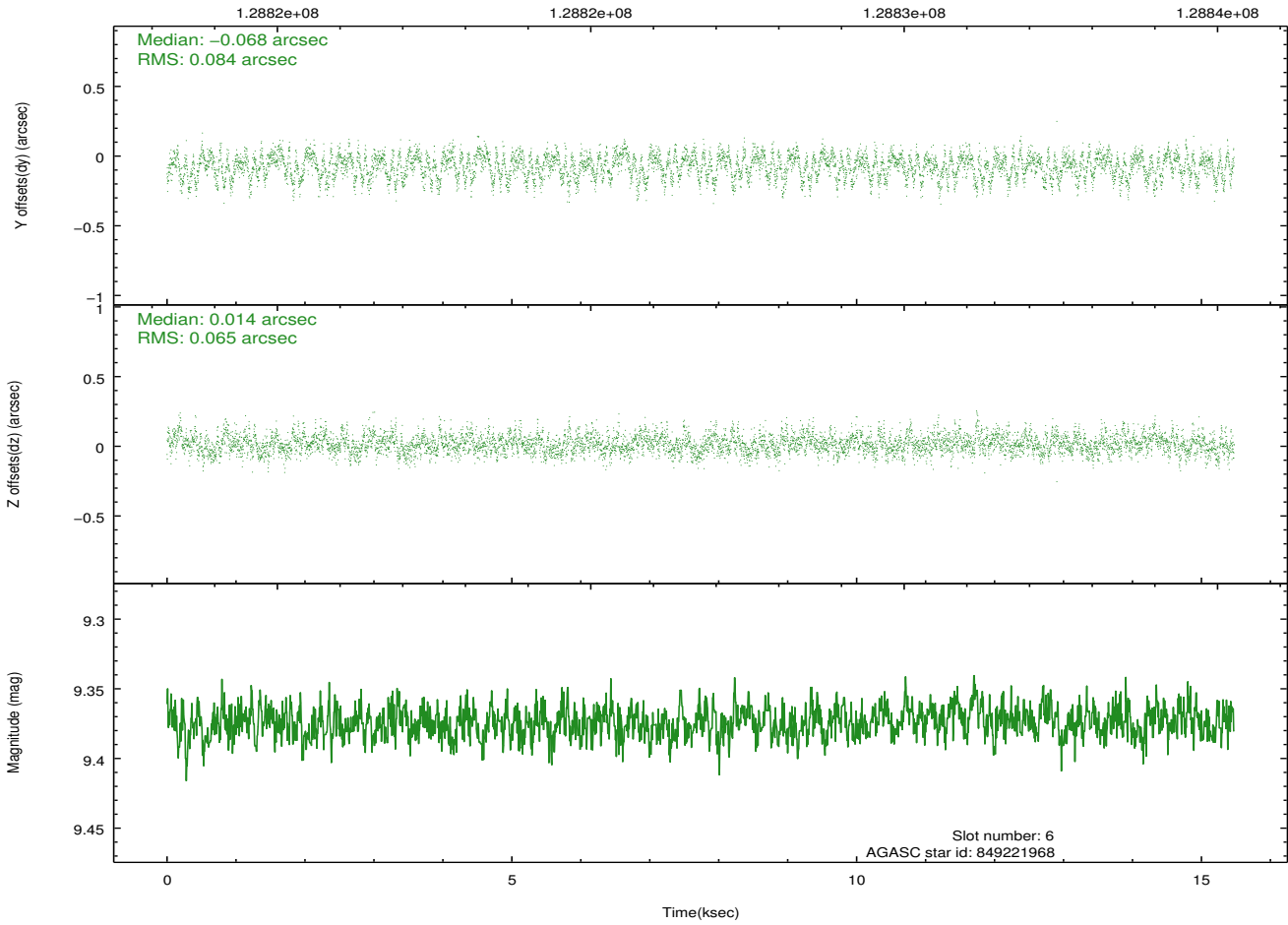
2.4.3 Slot 5



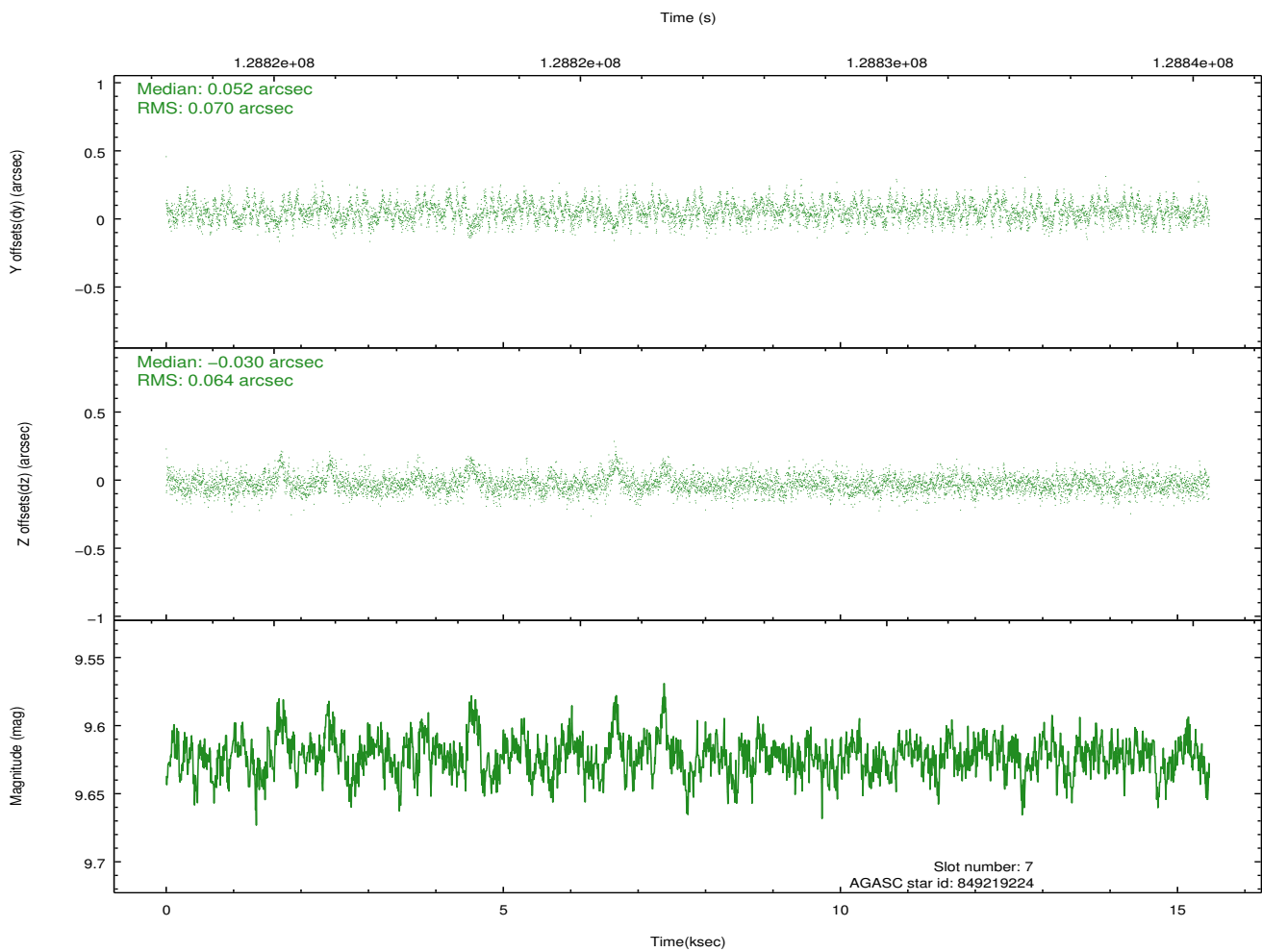
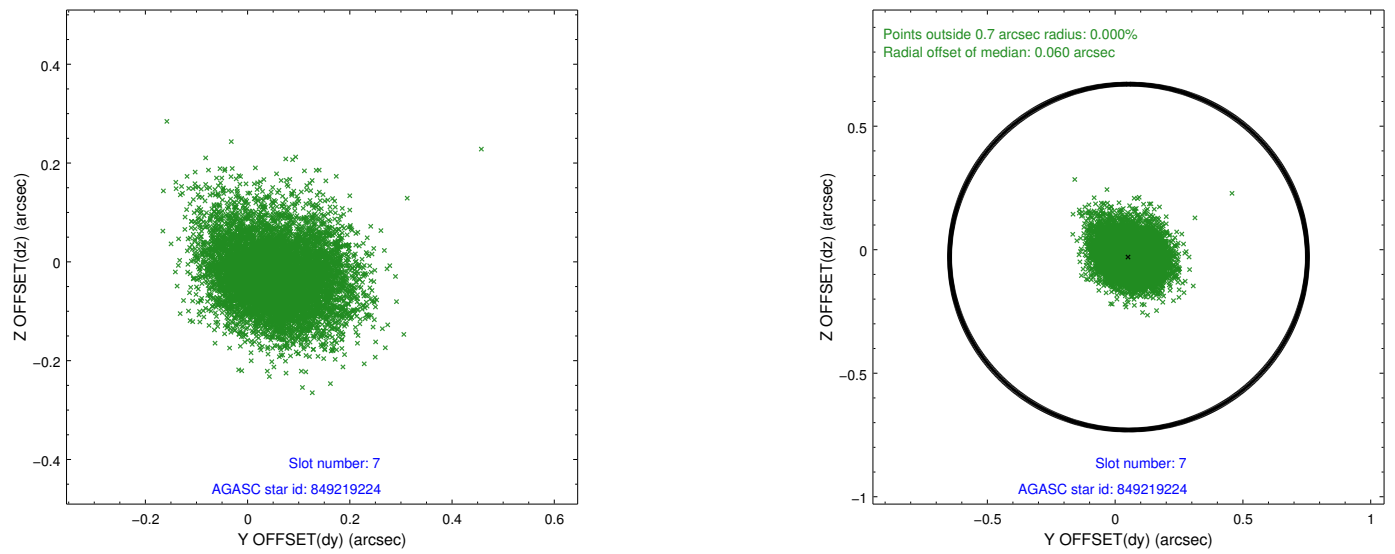
2.4.4 Slot 6



Time (s)

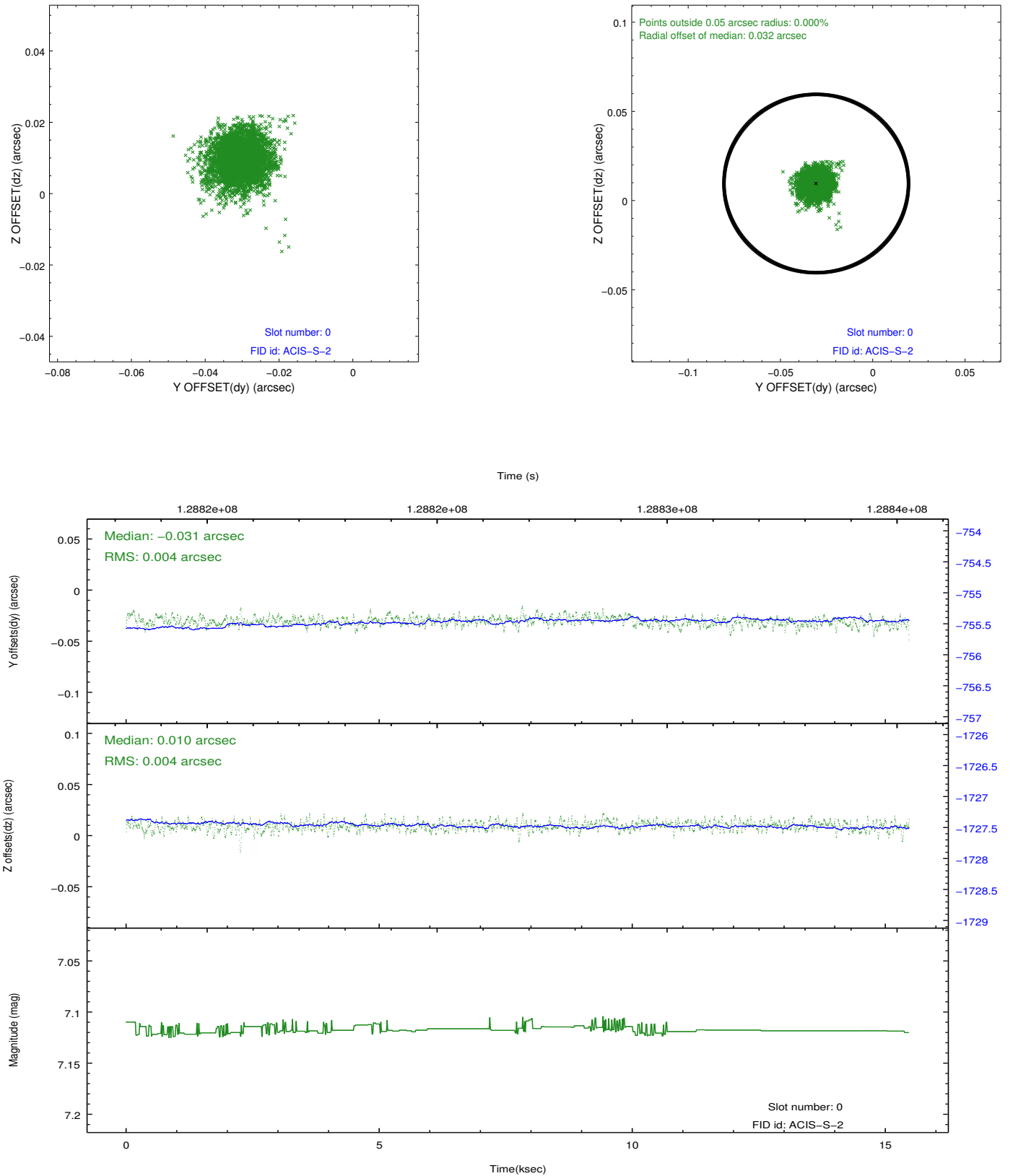


2.4.5 Slot 7

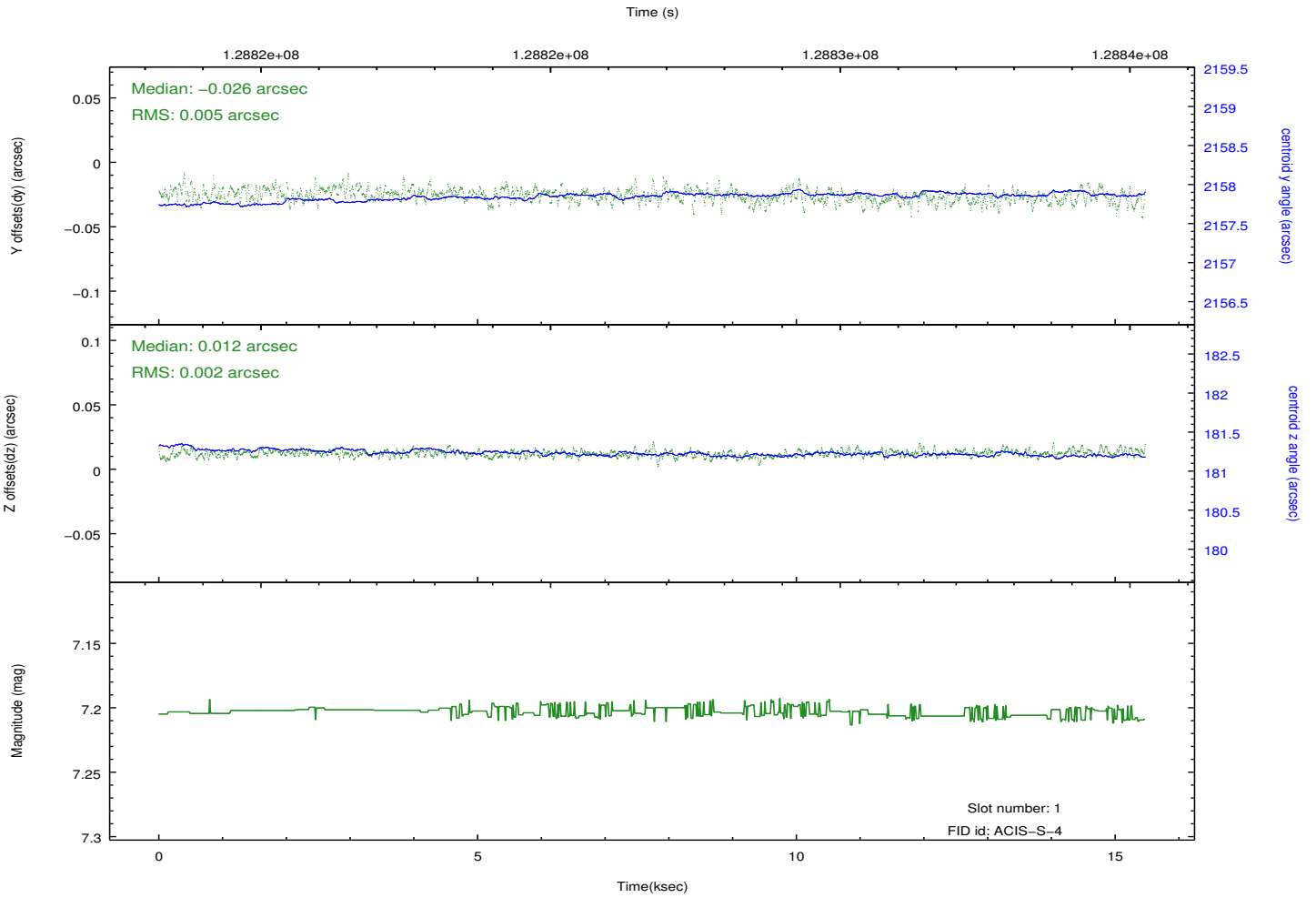
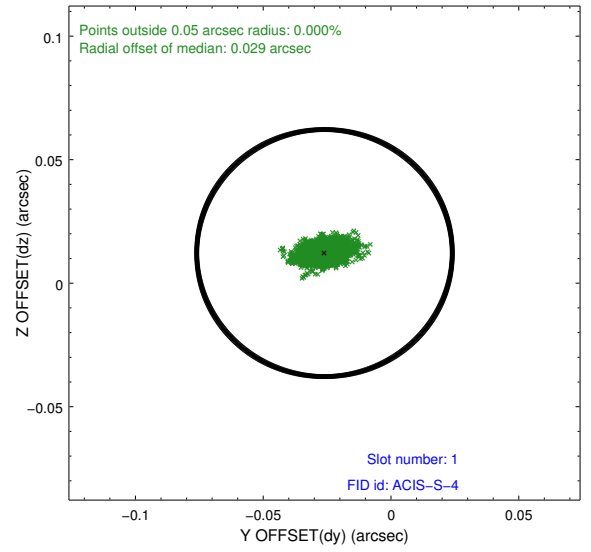
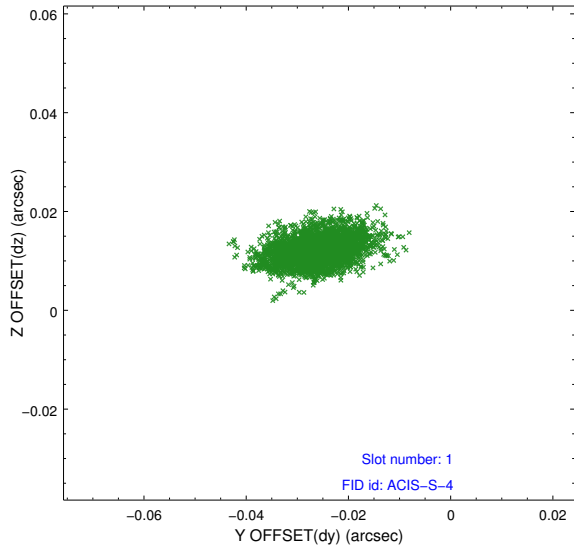


2.5 FID Slots

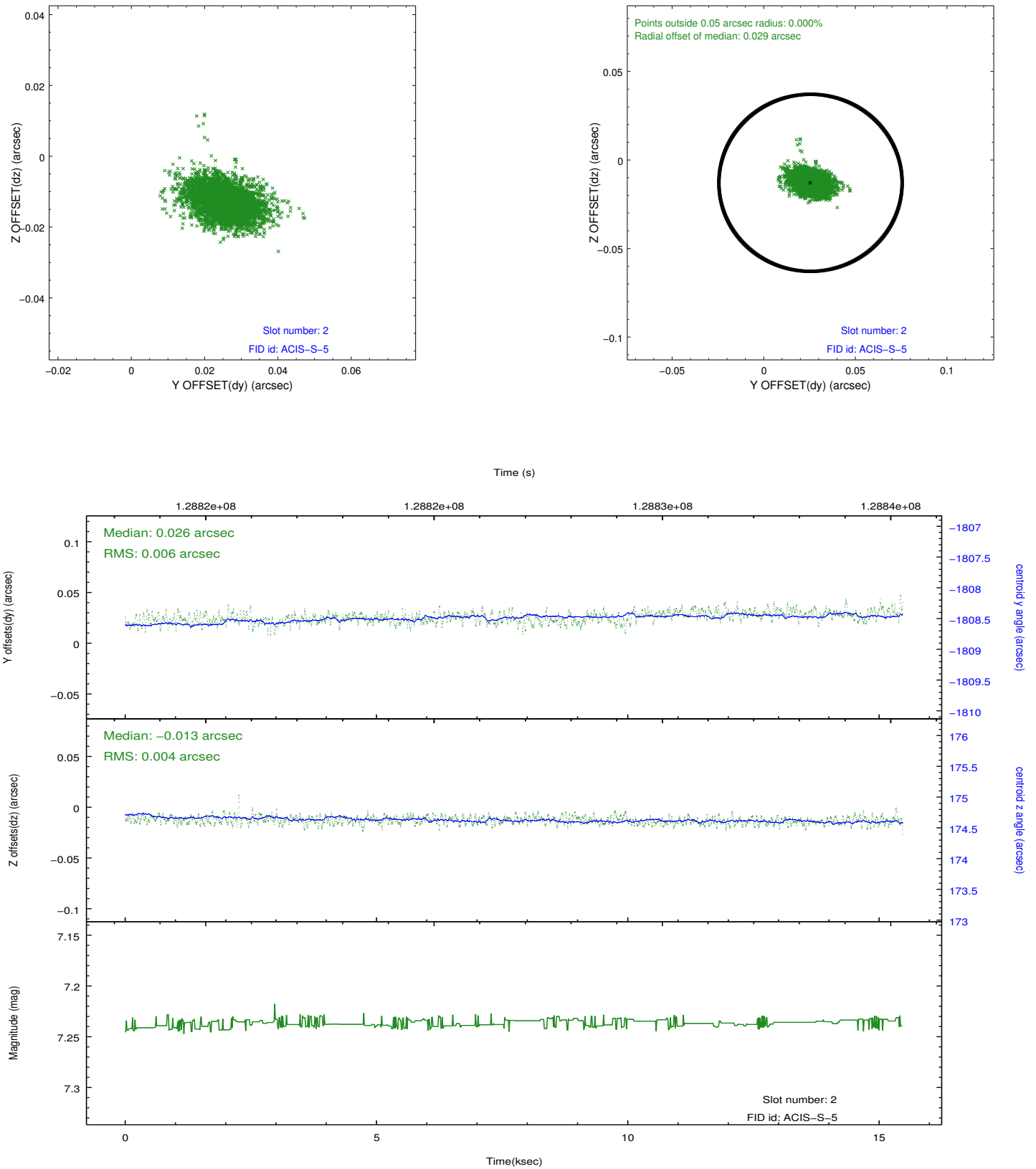
2.5.1 Slot 0



2.5.2 Slot 1



2.5.3 Slot 2



A Summary

A.1 Status

V&V Scientist	Jen Lauer
V&V Date (YYYY-MM-DD)	2012.10.03
V&V Edition	1
V&V Disposition and Status	OK
V&V Charge Time	15.056

A.2 Comments