

V&V Reference Report

L2 ASCDS Version : 8.4.5

Observation 3502 - L2 Version 3
Chandra X-Ray Center

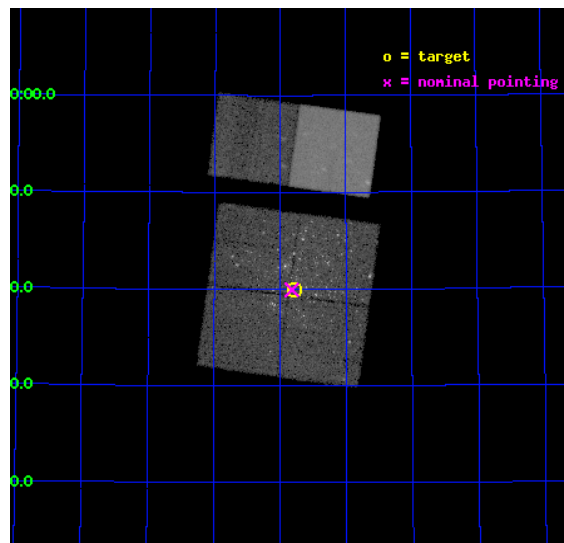
L2 Processing Date : Oct 24 2012

Contents

1	Front	2
2	OBI	3
2.1	OBI	3
2.1.1	Images	3
2.1.2	Bias	3
2.1.3	Parameters	4
2.1.4	Events	4
2.2	Compared Parameters	5
2.3	Aspect	6
2.4	Star Slots	9
2.4.1	Slot 3	9
2.4.2	Slot 4	10
2.4.3	Slot 5	11
2.4.4	Slot 6	12
2.4.5	Slot 7	13
2.5	FID Slots	14
2.5.1	Slot 0	14
2.5.2	Slot 1	15
2.5.3	Slot 2	16
A	Summary	17
A.1	Status	17
A.2	Comments	17

1 Front

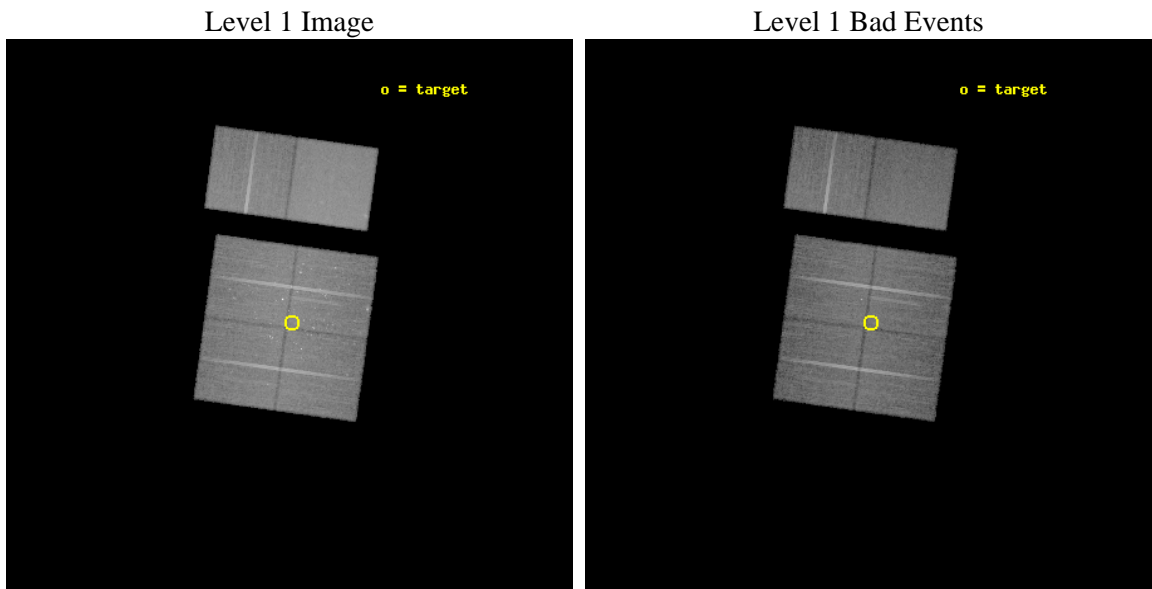
seq_num	200197	Sequence number
obs_id	3502	Observation id
title	CATCHING THE THIRD GENERATION OF YSOS IN THE CEPB/S155 INTERFACE REGION	Proposal title
observer	Professor Gordon Garmire	Principal investigator
object	CEP B	Source name
dtcycle	0	
cycle	P	events from which exps? Prim/Second/Both
ra_targ	344.195833	Observer's specified target RA [deg]
dec_targ	62.666667	Observer's specified target Dec [deg]
ra_nom	344.20556830546	Nominal RA [deg]
dec_nom	62.665471780912	Nominal Dec [deg]
roll_nom	7.909282398501	Nominal Roll [deg]
revision	3	Processing version of data
ontime	30476.390602678	Sum of GTIs [s]
livetime	30090.480194188	Livetime [s]
ontime0	30469.78577137	Sum of GTIs [s]
ontime1	30476.308522671	Sum of GTIs [s]
ontime2	30476.349562675	Sum of GTIs [s]
ontime3	30476.390602678	Sum of GTIs [s]
ontime6	30476.472682685	Sum of GTIs [s]
ontime7	30476.431642681	Sum of GTIs [s]
l2events	228741	Number of level 2 events



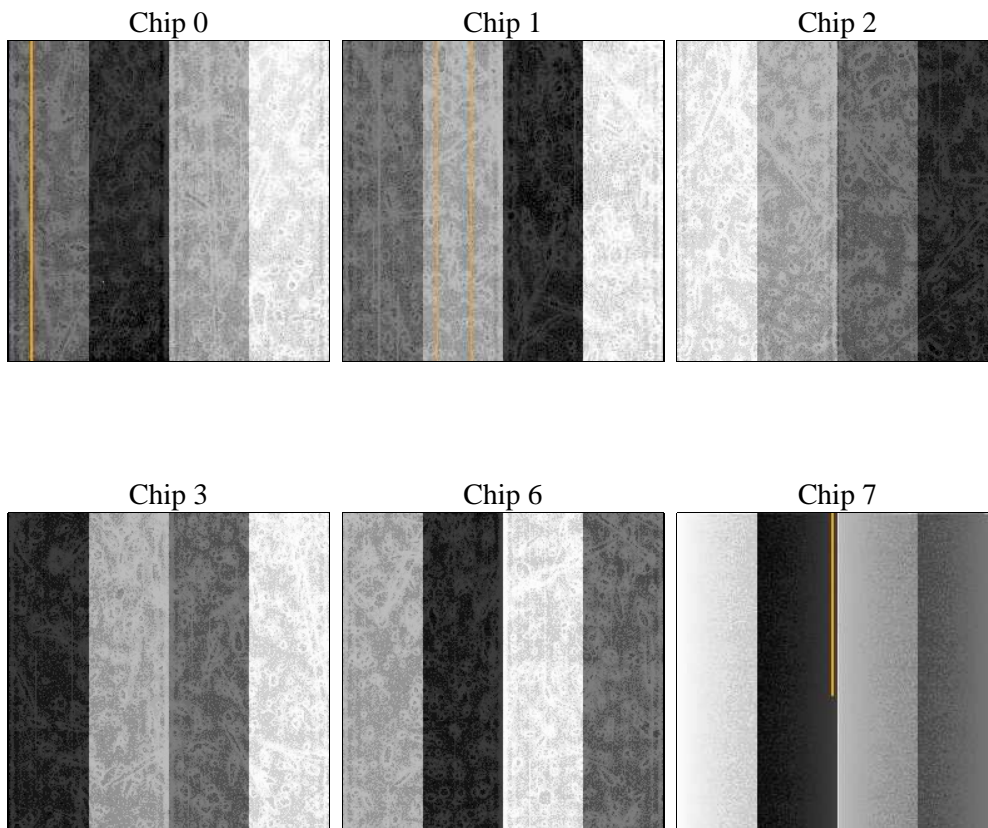
2 OBI

2.1 OBI

2.1.1 Images



2.1.2 Bias



2.1.3 Parameters

obi_num	0	Obi number	sched_exp_time	30459.741000	[s] Scheduled observation exposure time
ascdsver	8.4.5	Processing system revision	ontime	30476.390602678	Sum of GTIs [s]
caldbver	4.5.2	 	ontime0	30469.78577137	Sum of GTIs [s]
date	2012-10-24T14:19:43	Date and time of file creation	ontime1	30476.308522671	Sum of GTIs [s]
revision	3	Processing version of data	ontime2	30476.349562675	Sum of GTIs [s]
			ontime3	30476.390602678	Sum of GTIs [s]
			ontime6	30476.472682685	Sum of GTIs [s]
			ontime7	30476.431642681	Sum of GTIs [s]
			l1events	1217393	Number of level 1 events

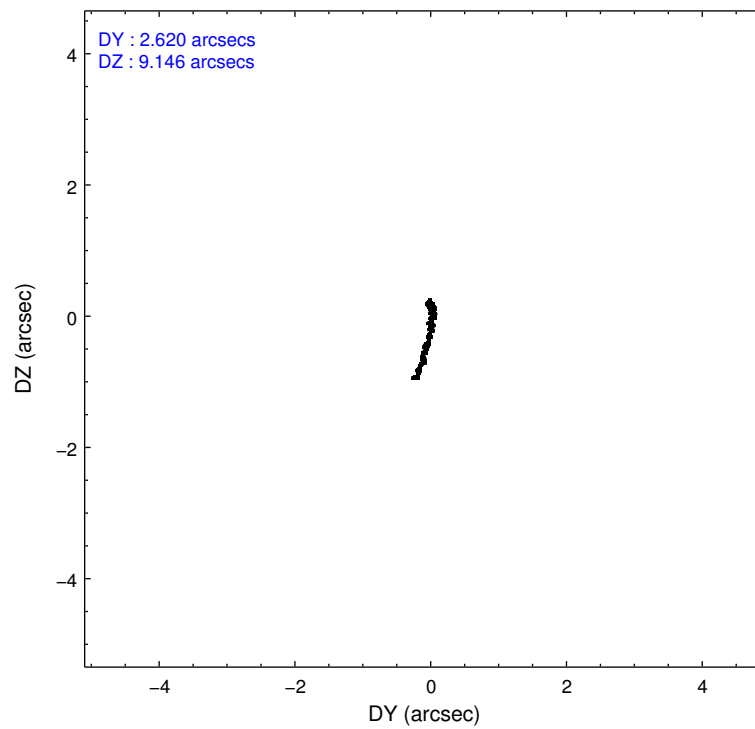
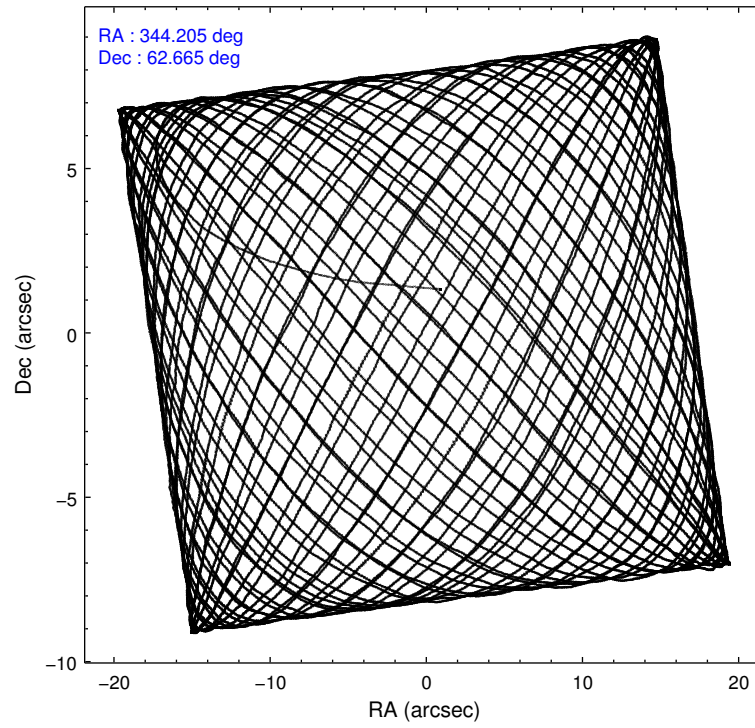
2.1.4 Events

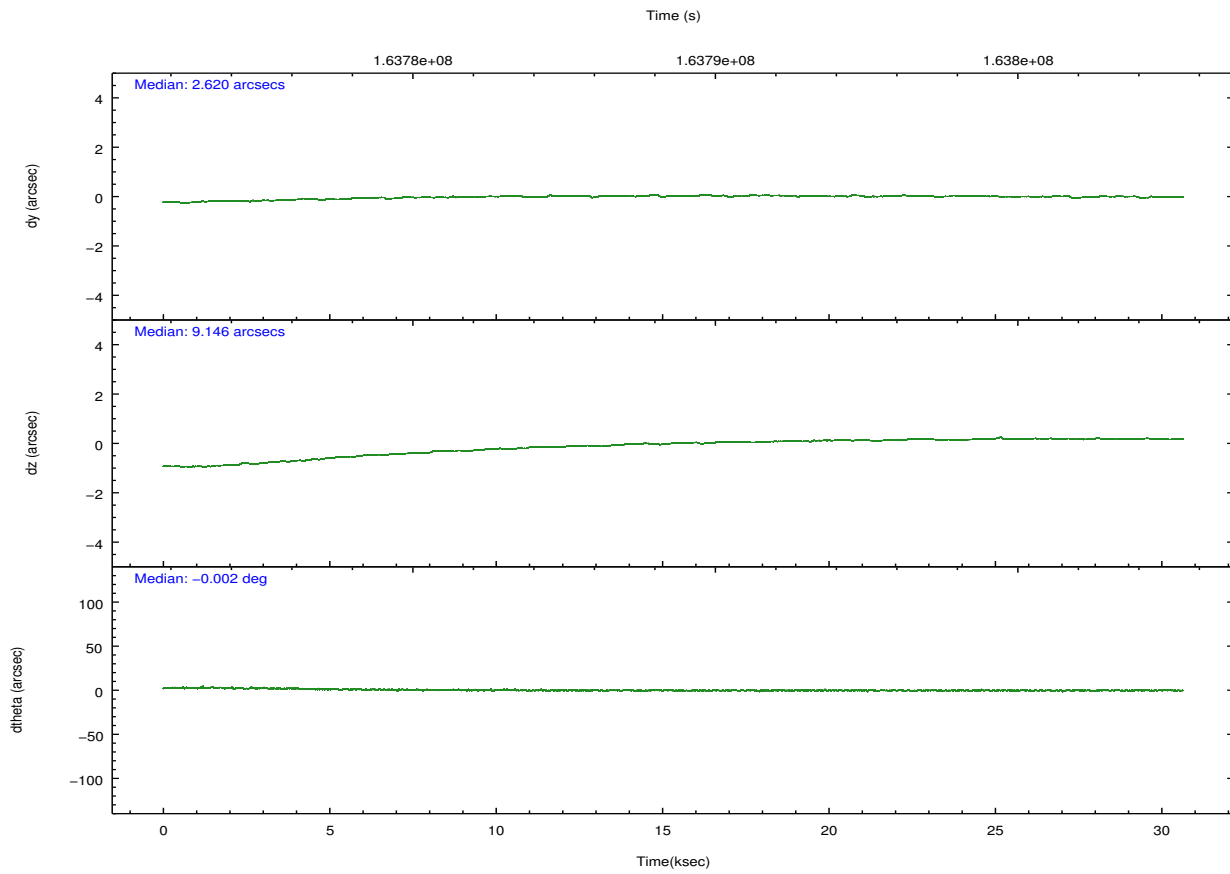
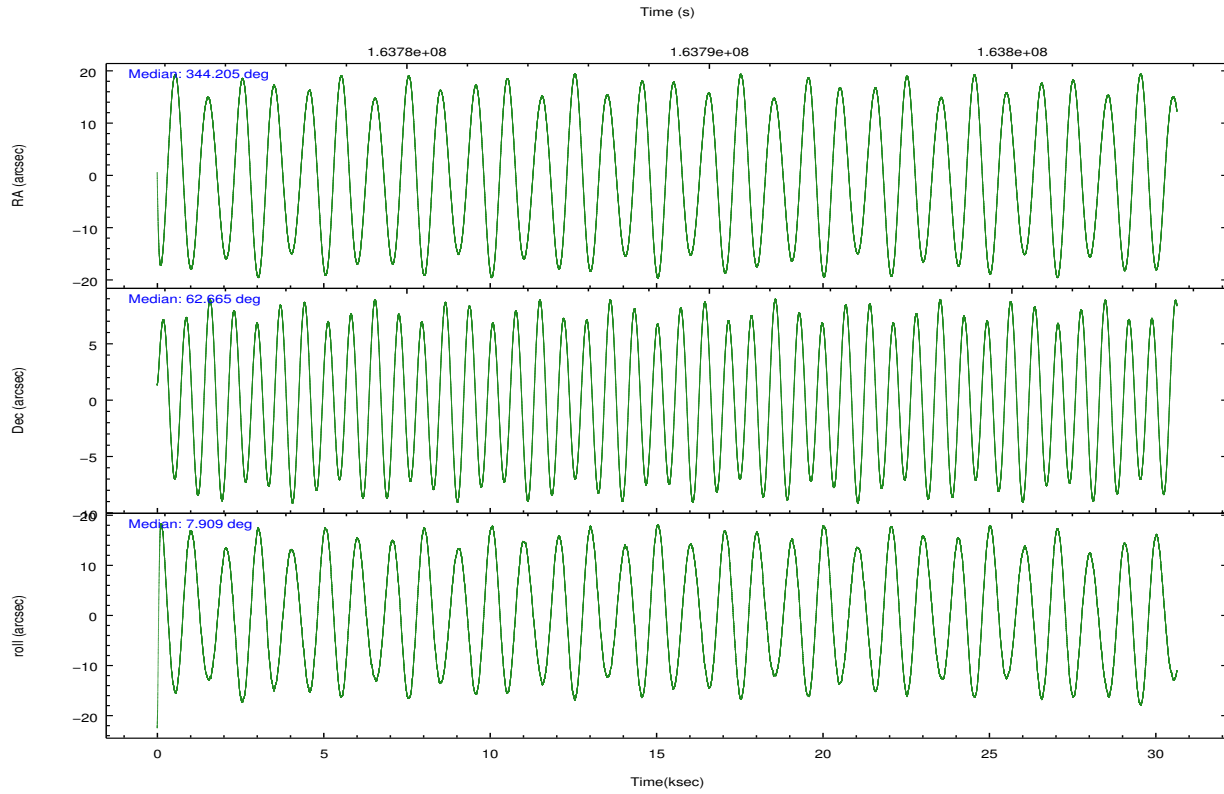
	ccd 0	ccd 1	ccd 2	ccd 3	ccd 6	ccd 7		ccd 0	ccd 1	ccd 2	ccd 3	ccd 6	ccd 7
level 1 events	178988	181218	200850	198437	198040	259860	grade 0 events	11904	12579	16056	18631	9135	10383
rejected events	153343	153301	170518	165727	175180	150799		6%	6%	7%	9%	4%	3%
rejected %	85%	84%	84%	83%	88%	58%	grade 1 events	121	109	299	169	110	252
								0%	0%	0%	0%	0%	0%
							grade 2 events	5051	5534	5458	5056	4607	21599
								2%	3%	2%	2%	2%	8%
							grade 3 events	2420	2569	2434	2483	2262	10042
								1%	1%	1%	1%	1%	3%
							grade 4 events	2290	2526	2380	2470	2174	9956
								1%	1%	1%	1%	1%	3%
							grade 5 events	7391	7791	7459	8479	8828	25025
								4%	4%	3%	4%	4%	9%
							grade 6 events	3989	4712	4011	4080	4686	57107
								2%	2%	1%	2%	2%	21%
							grade 7 events	145822	145398	162753	157069	166238	125496
								81%	80%	81%	79%	83%	48%

2.2 Compared Parameters

Parameter	Planned	Actual	Parameter	Planned	Actual
Instrument	ACIS	ACIS	Obspar format version number	7	7
Detector	ACIS-012367	ACIS-012367	Obspar file type	PREDICTED	ACTUAL
Grating	NONE	NONE	Obspar update status	NONE	UPDATED
Data mode	FAINT	FAINT	Number of optional ACIS chips dropped	0	0
Observation mode	POINTING	POINTING	On-chip summing requested	N	N
[deg] Pointing RA	344.158717	344.2055683054617	Subarray requested	NONE	NONE
[deg] Pointing Dec	62.648537	62.66547178091153	Alternating exposures requested	N	N
[deg] Pointing Roll	7.742222	7.909282398500957	[s] Primary exposure time	0.000000	3.2
[mm] SIM focus pos	-0.782348	-0.7809083437167272			
[mm] SIM defocus	0	0.001439871863259334			
[mm] SIM translation stage pos	-233.592463	-233.5874344608287			
[mm] SIM translation stage offset	0	-0.005018542100998502			
[s] Observation start time (MET)	163773453.184000	163772465.28175			
Observation start date	2003-03-11T12:36:29	2003-03-11T12:21:05			
[s] Observation end time (MET)	163803913.184000	163804227.98309			
Observation end date	2003-03-11T21:04:09	2003-03-11T21:10:27			
Read mode	TIMED	TIMED			

2.3 Aspect



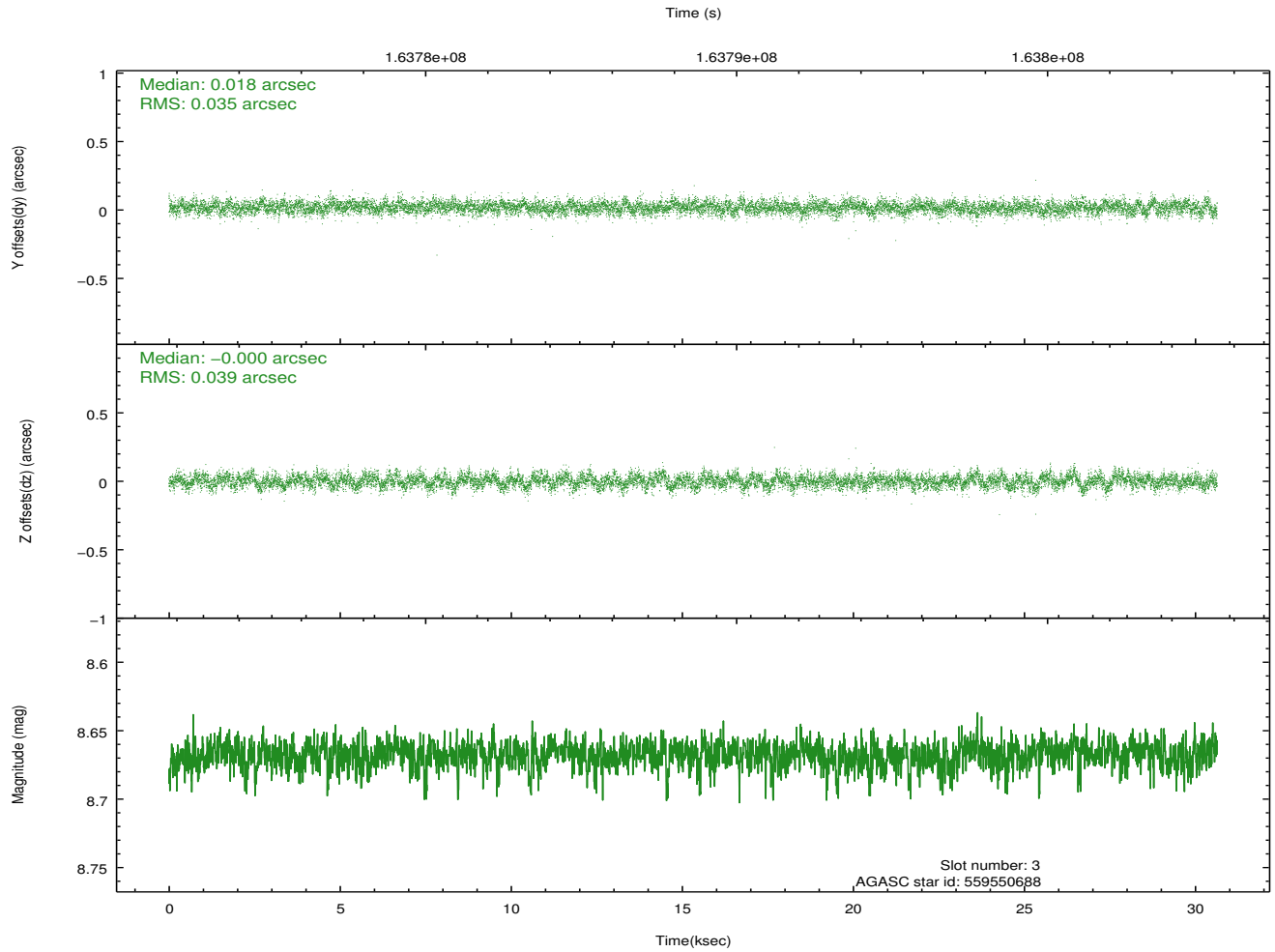
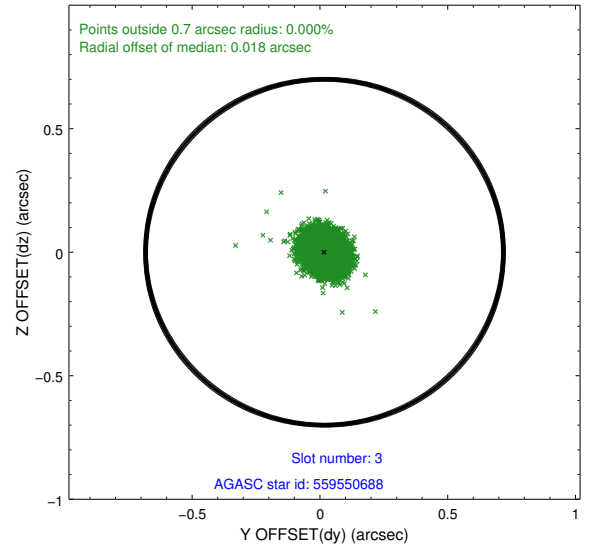
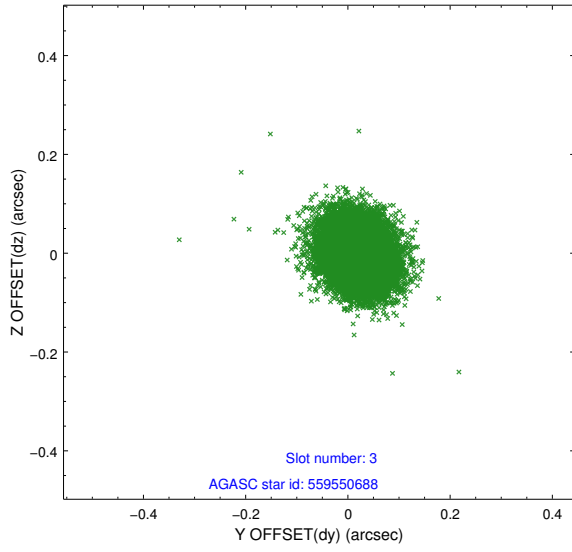


Slot Statistics

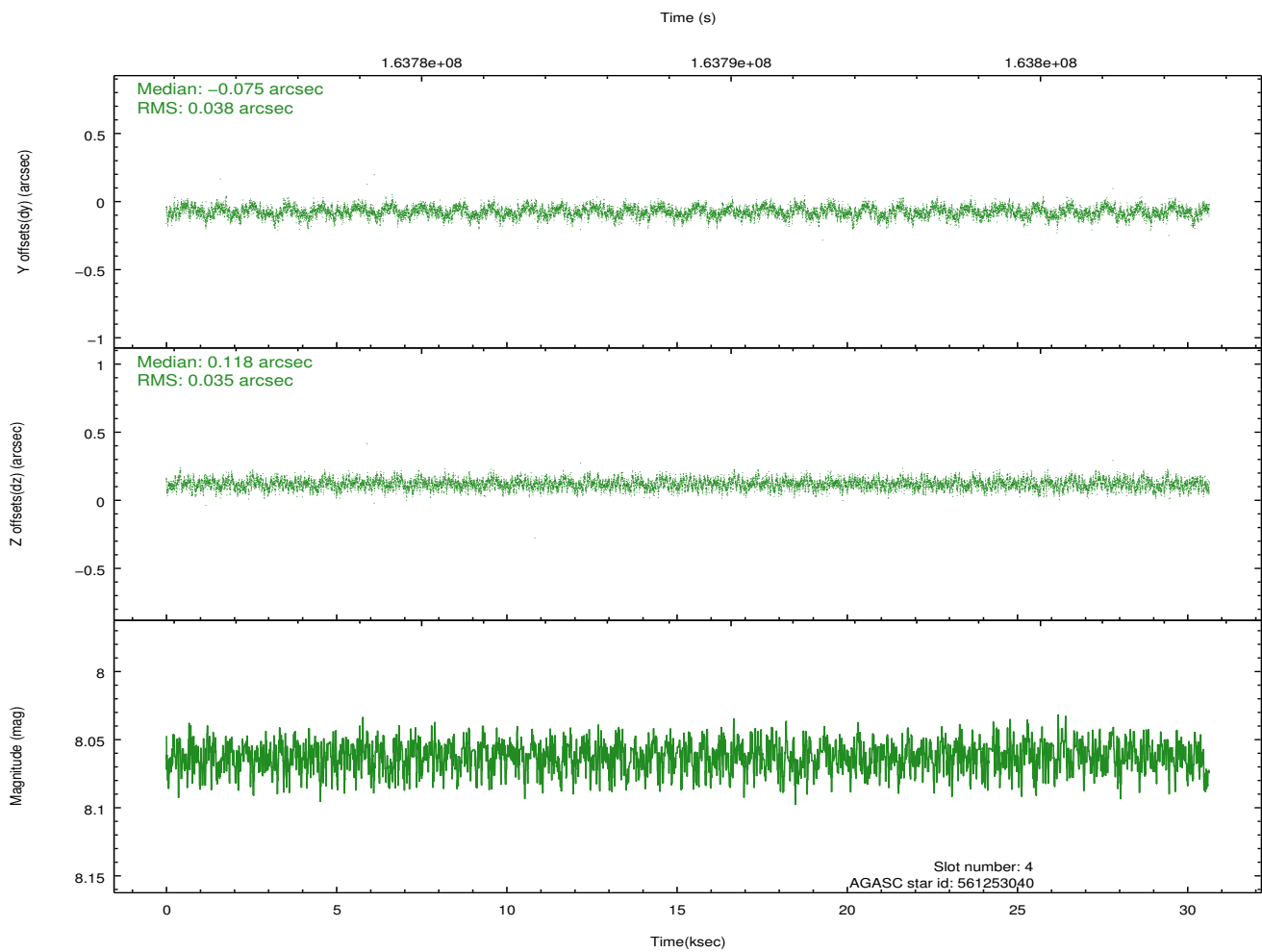
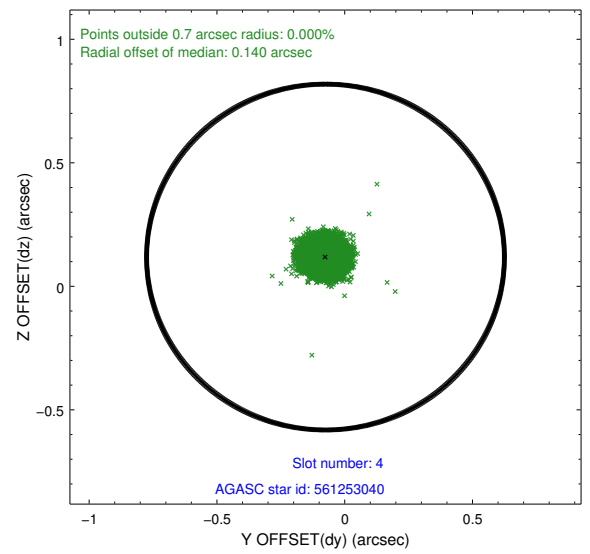
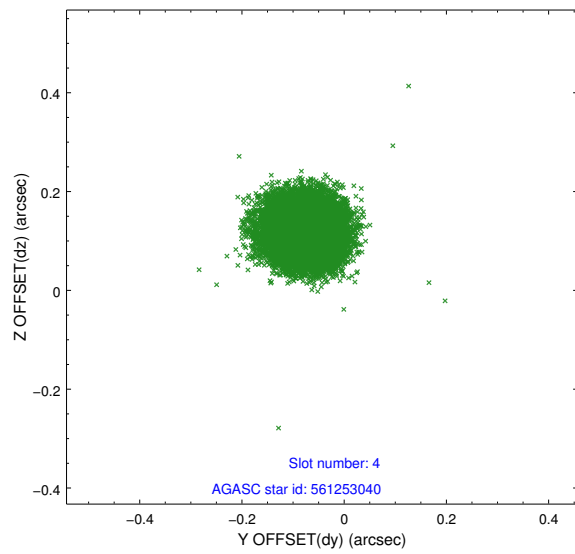
slot	status	id	mag	n_pts	med_dy	med_dz	dr1	dr2	ra	dec	mean_y	mean_z
0	FID	ACIS-I-1	7.24	7474	-0.036	0.066	0.008	0.016	0.000000	0.000000	937.18	-832.37
1	FID	ACIS-I-5	7.24	7473	-0.063	0.019	0.009	0.018	0.000000	0.000000	-1810.93	1065.02
2	FID	ACIS-I-6	7.26	7473	0.008	-0.016	0.011	0.022	0.000000	0.000000	402.68	1709.58
3	GUIDE	559550688	8.67	14944	0.018	-0.000	0.056	0.090	342.812650	62.620692	-2218.16	224.03
4	GUIDE	561253040	8.06	14944	-0.075	0.118	0.055	0.089	343.127313	62.440534	-1801.21	-496.71
5	GUIDE	561254000	8.31	14946	-0.058	0.066	0.066	0.108	345.523435	62.512083	2183.93	-768.30
6	GUIDE	561255392	8.25	14947	0.063	-0.049	0.049	0.081	345.299730	62.941959	1996.39	811.46
7	GUIDE	561258272	9.31	14943	0.053	-0.136	0.076	0.122	343.140635	62.313264	-1847.73	-953.25

2.4 Star Slots

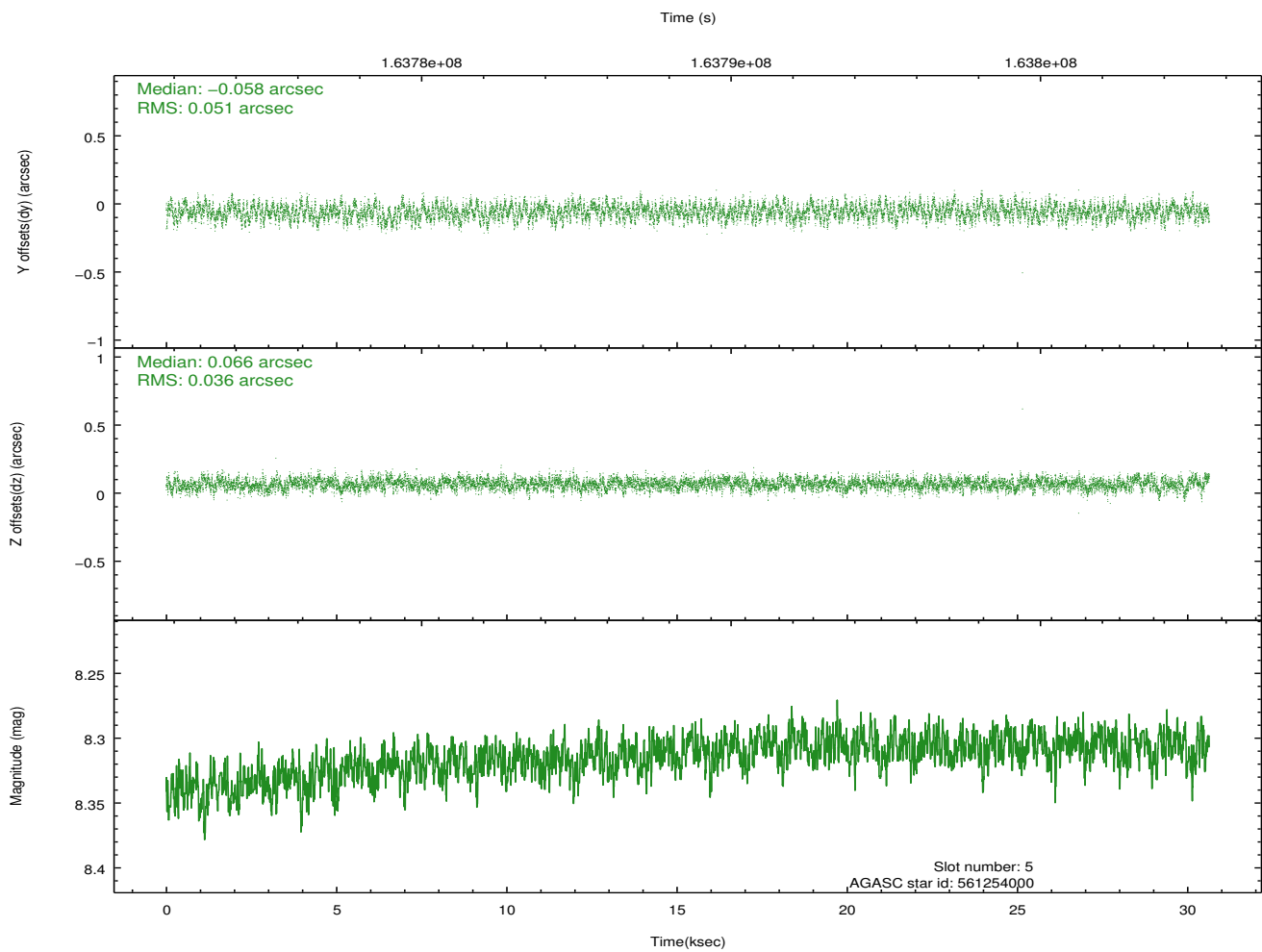
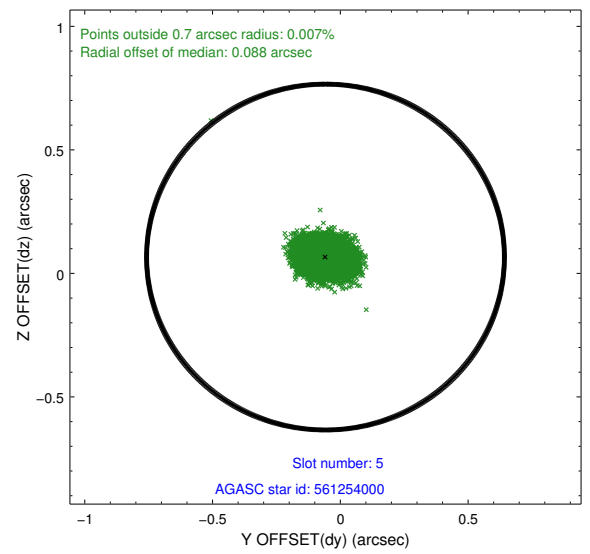
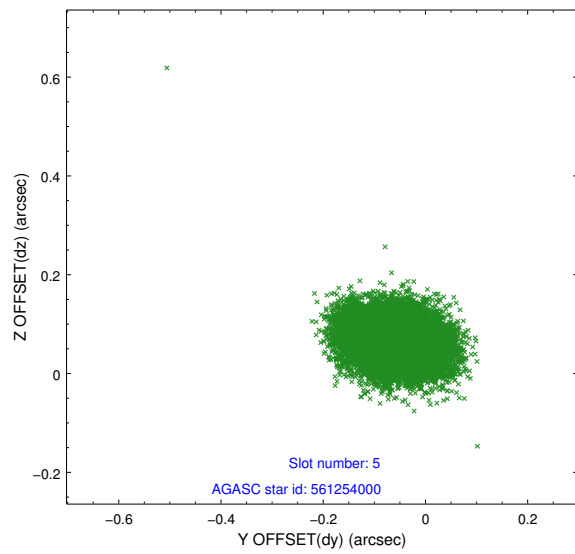
2.4.1 Slot 3



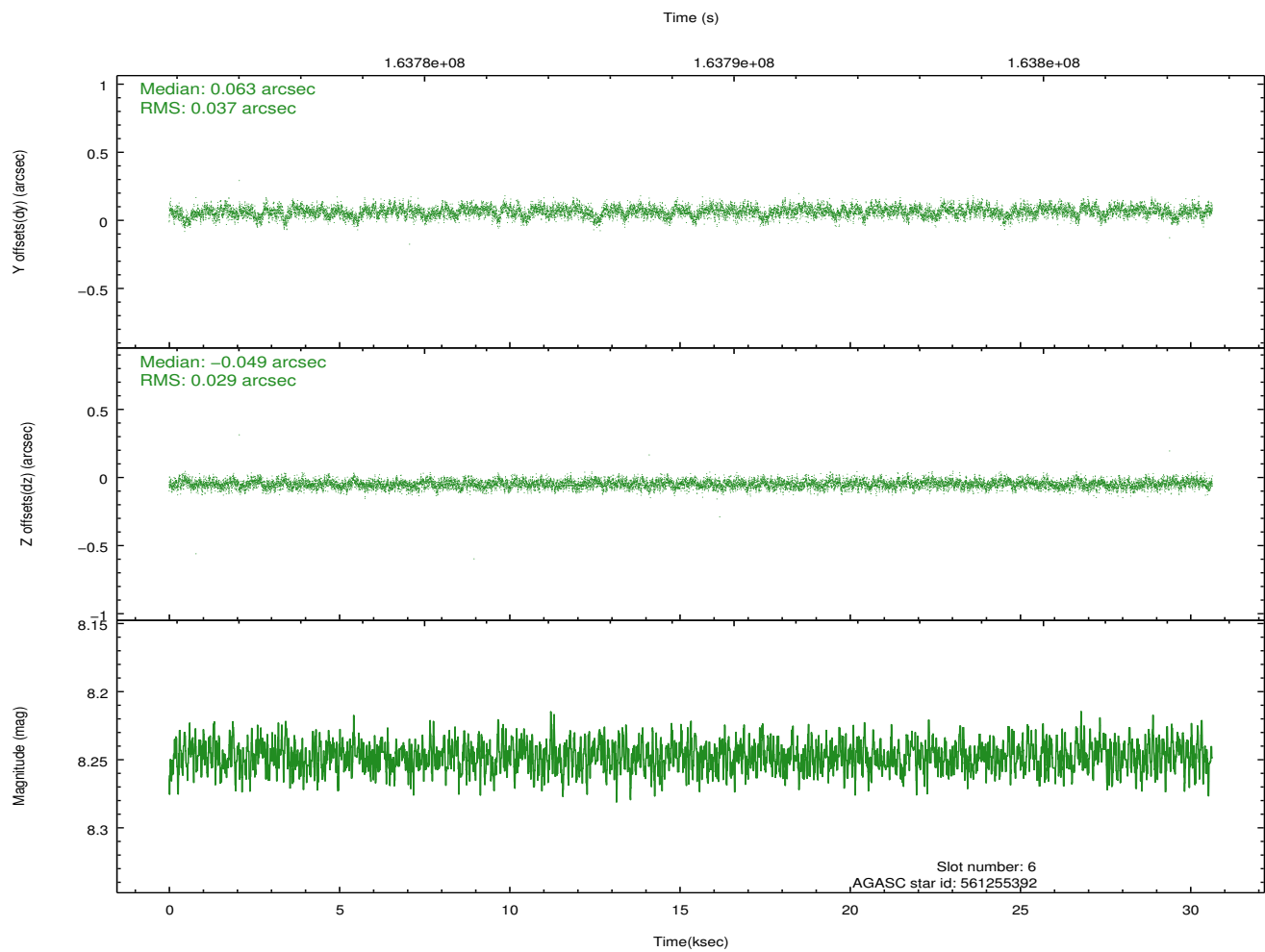
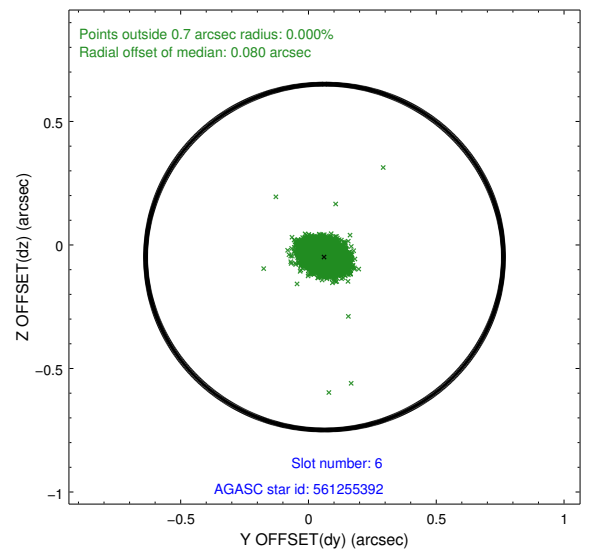
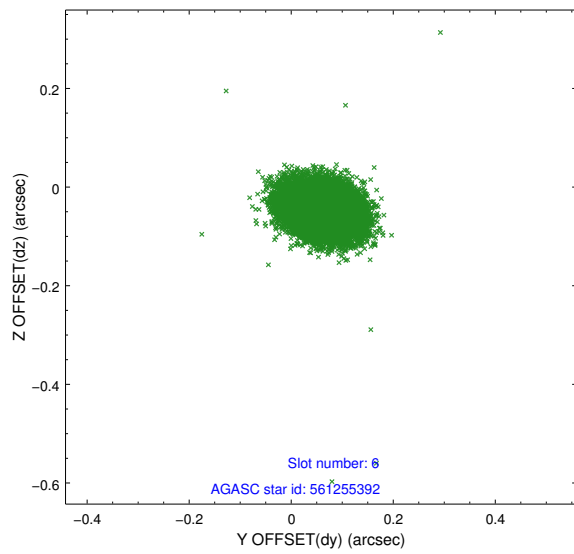
2.4.2 Slot 4



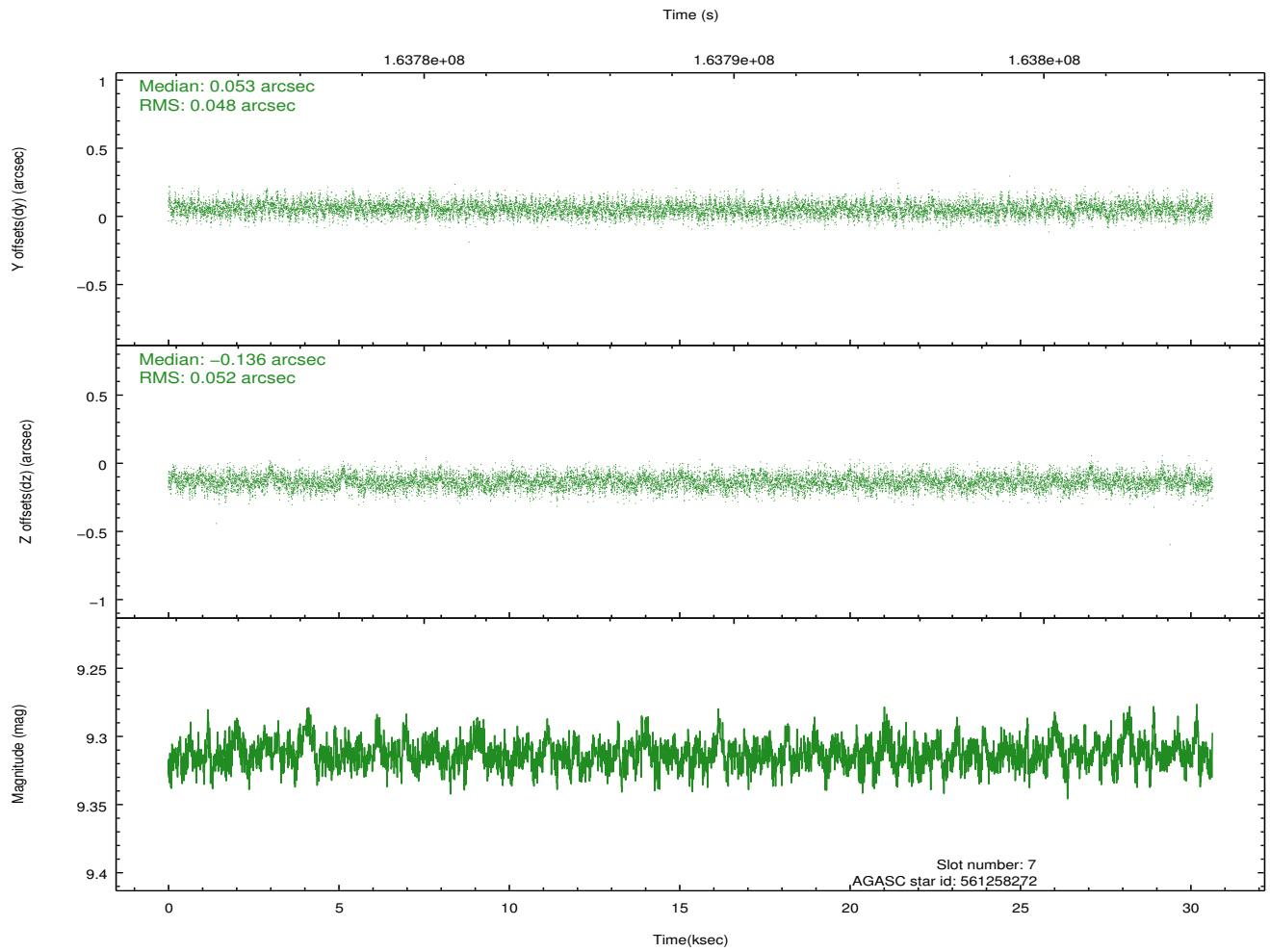
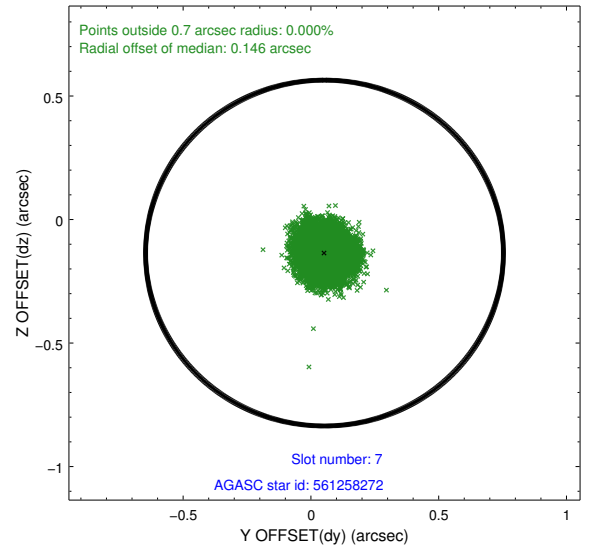
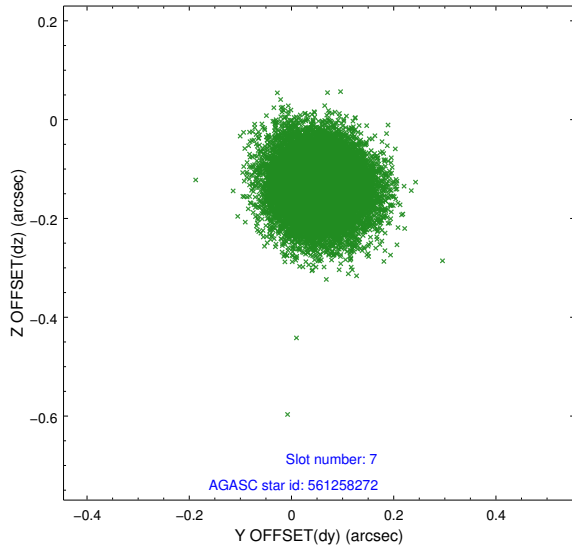
2.4.3 Slot 5



2.4.4 Slot 6

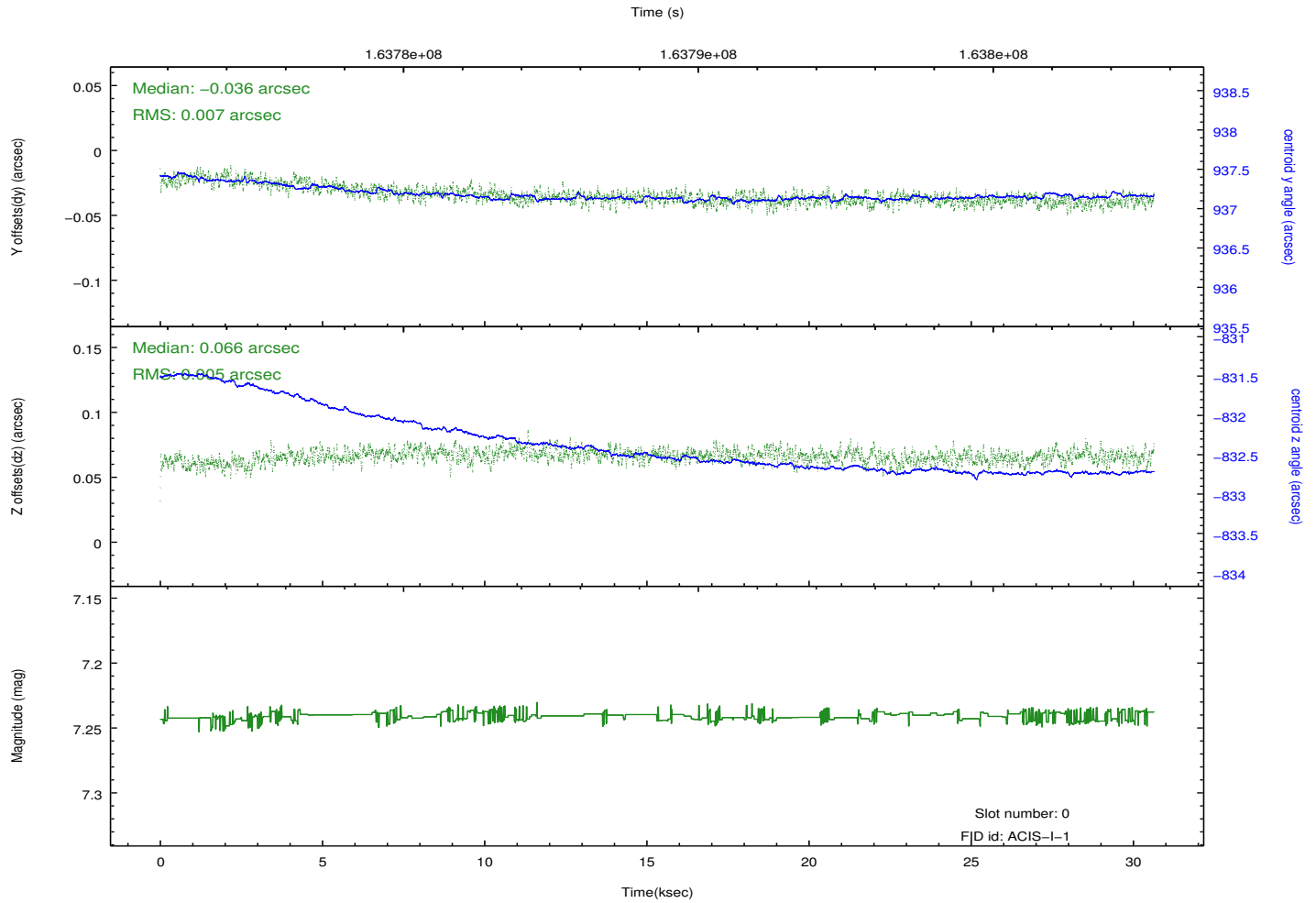
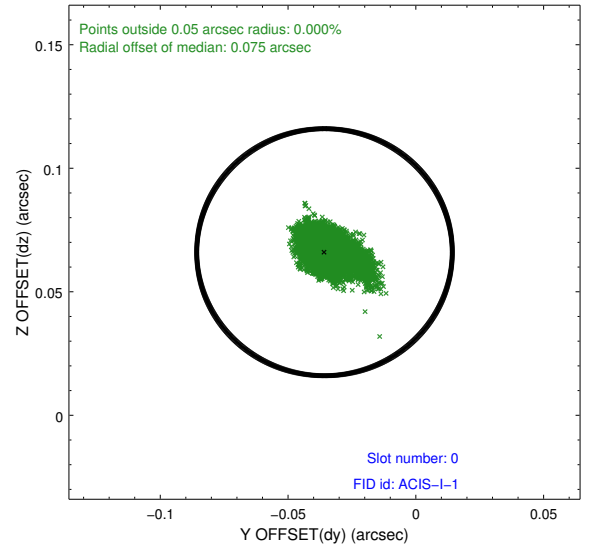
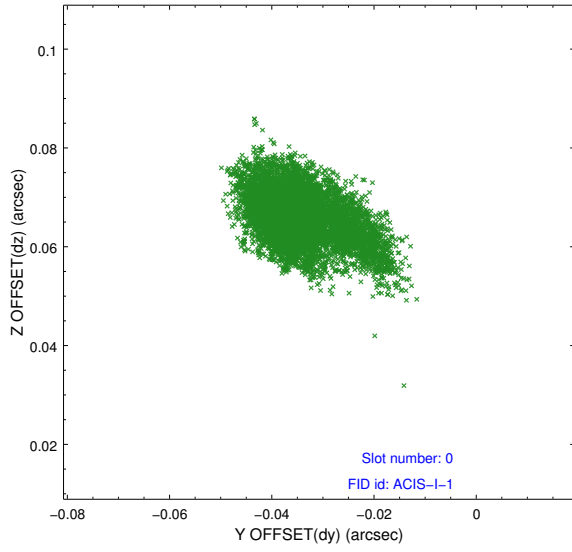


2.4.5 Slot 7

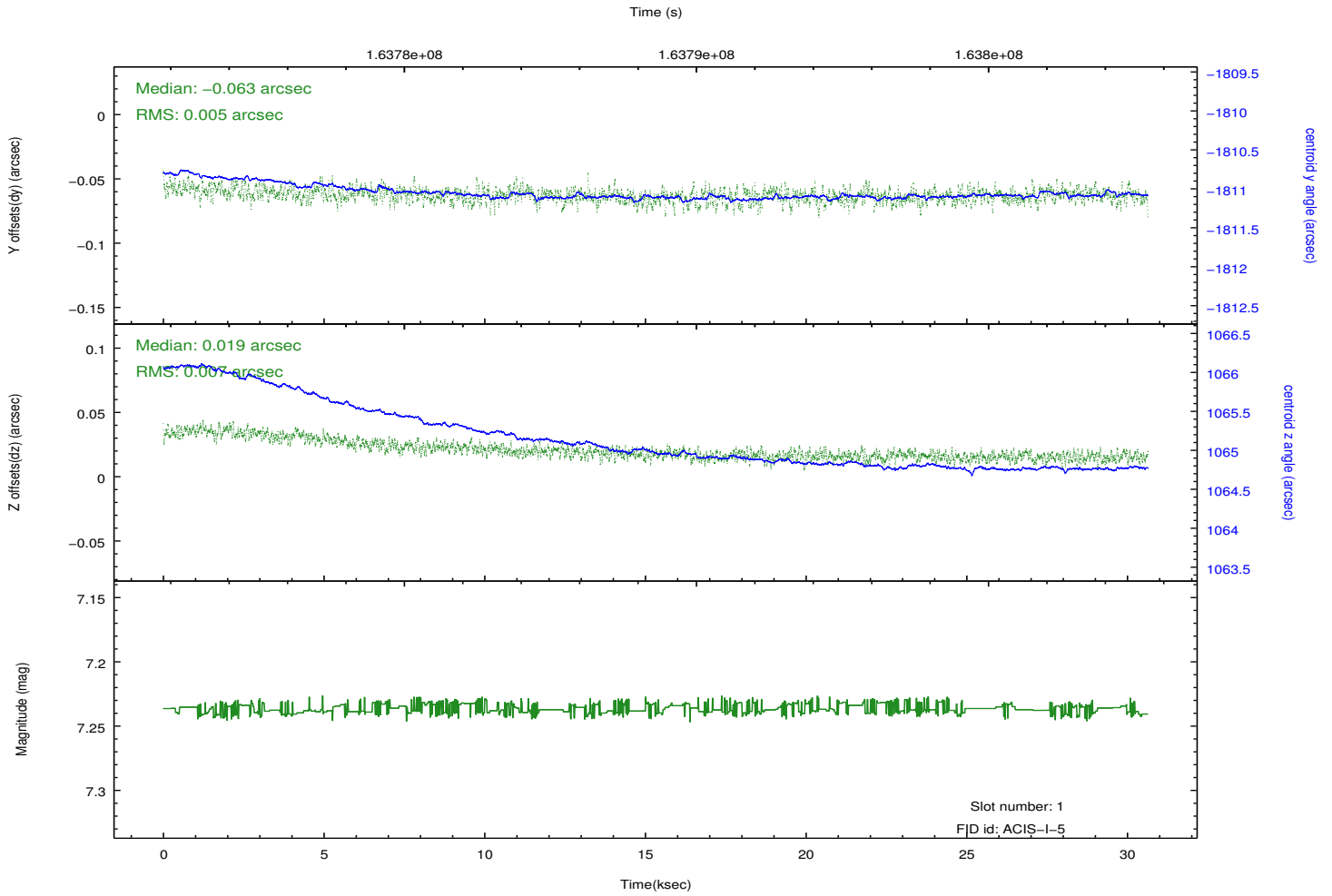
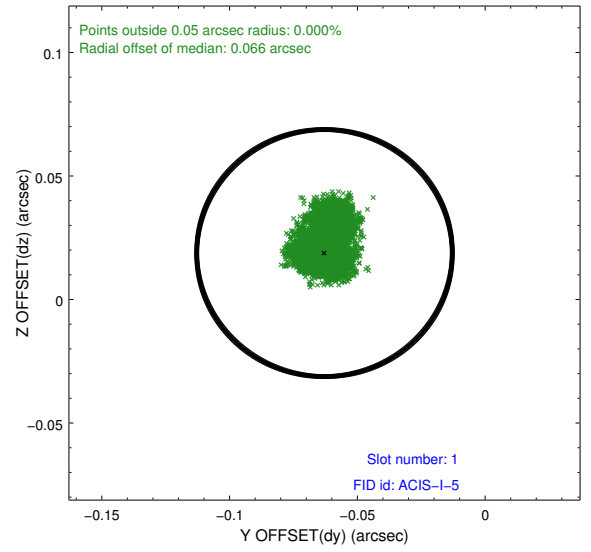
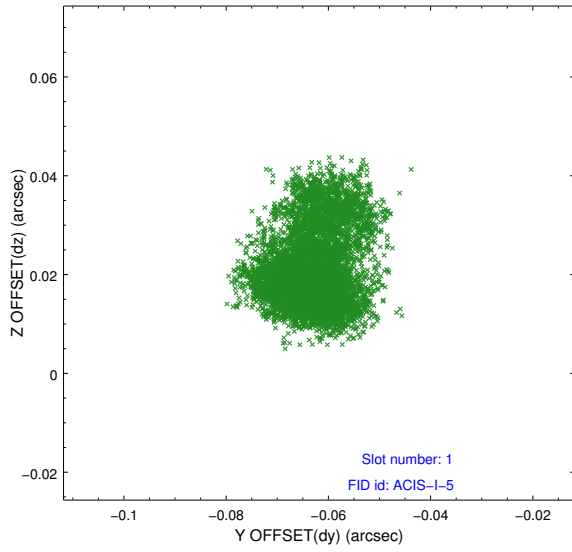


2.5 FID Slots

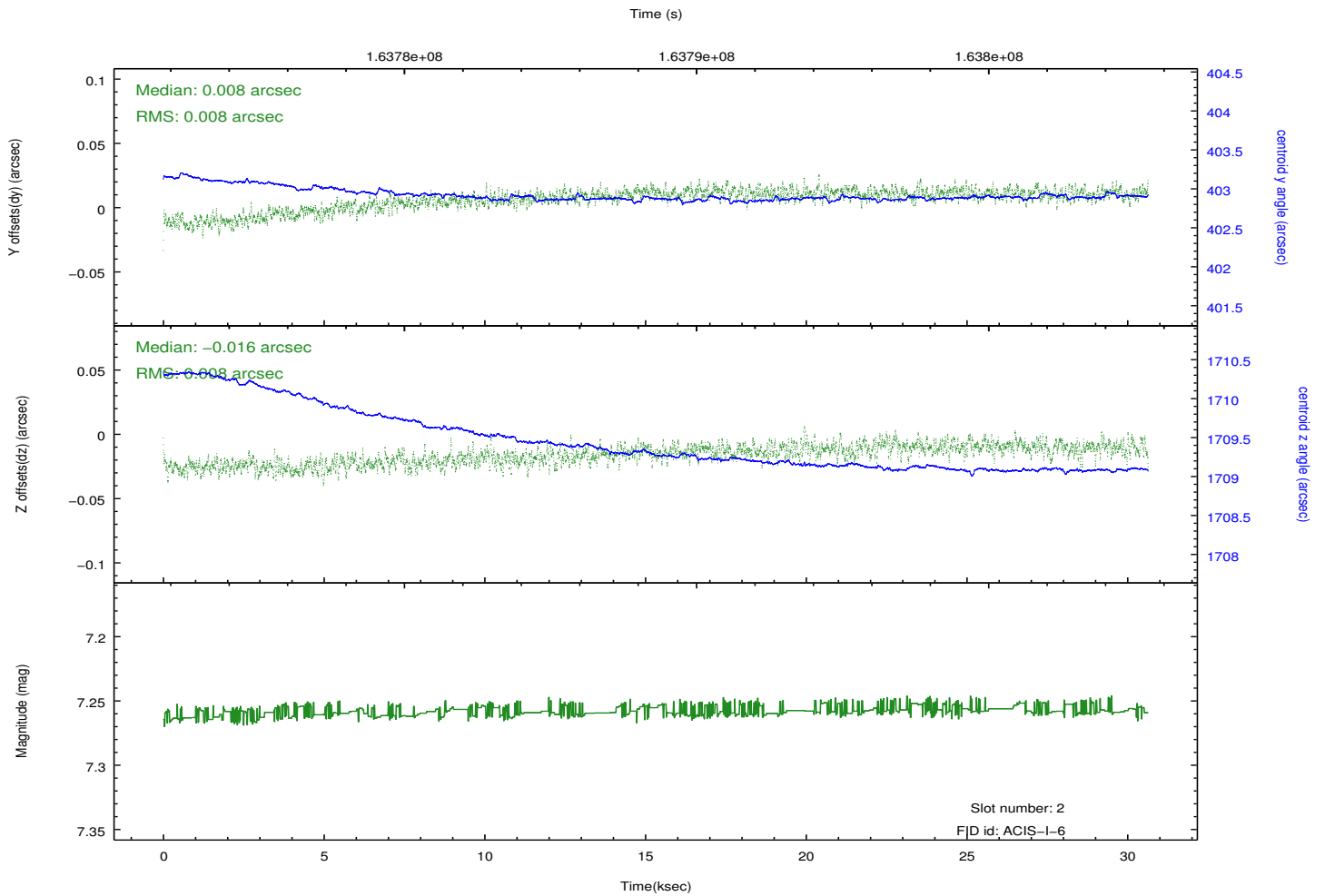
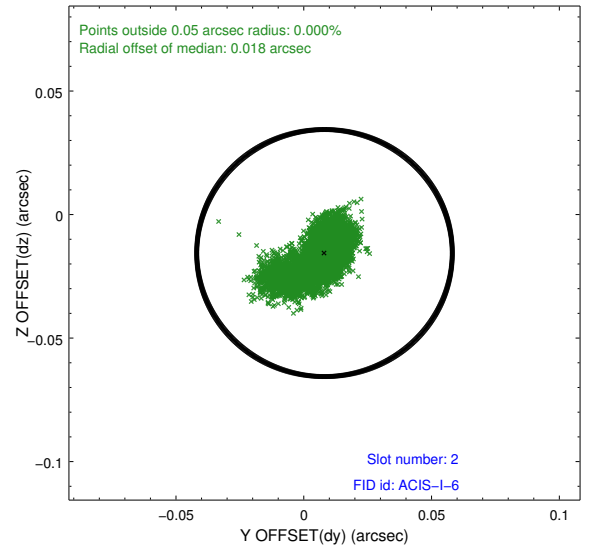
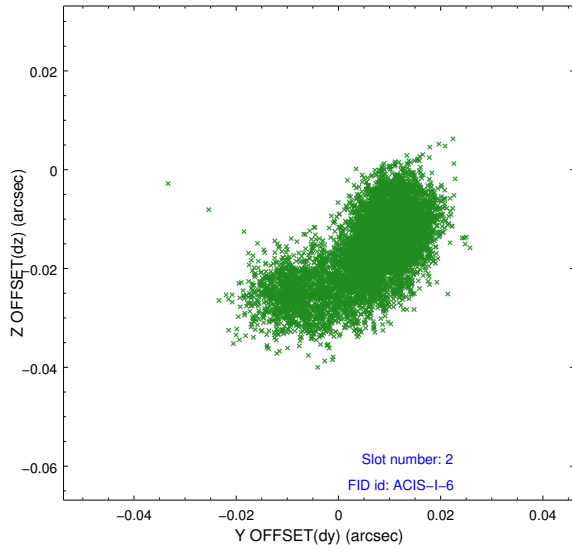
2.5.1 Slot 0



2.5.2 Slot 1



2.5.3 Slot 2



A Summary

A.1 Status

V&V Scientist	Jen Lauer
V&V Date (YYYY-MM-DD)	2012.11.08
V&V Edition	1
V&V Disposition and Status	OK
V&V Charge Time	30.476

A.2 Comments