

V&V Reference Report

L2 ASCDS Version : 8.4.5

Observation 3702 - L2 Version 3
Chandra X-Ray Center

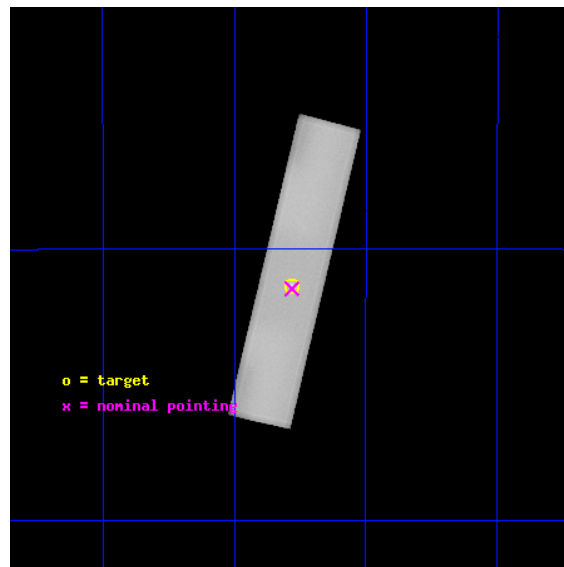
L2 Processing Date : Nov 7 2012

Contents

1	Front	2
2	OBI	3
2.1	OBI	3
2.1.1	Images	3
2.1.2	Parameters	4
2.1.3	Events	4
2.2	Compared Parameters	5
2.3	Aspect	6
2.4	Star Slots	9
2.4.1	Slot 3	9
2.4.2	Slot 4	10
2.4.3	Slot 5	11
2.4.4	Slot 6	12
2.4.5	Slot 7	13
2.5	FID Slots	14
2.5.1	Slot 0	14
2.5.2	Slot 1	15
2.5.3	Slot 2	16
A	Summary	17
A.1	Status	17
A.2	Comments	17

1 Front

seq_num	590314	Sequence number
obs_id	3702	Observation id
title	AO4B OBSERVATIONS OF THE STANDARD CANDLES CAS A AND G21.5-09	Propo
observer	Dr. CXC Calibration	Principal investigator
object	G21.5-0.9	Source name
ra_targ	278.389583	Observer's specified target RA [deg]
dec_targ	-10.568528	Observer's specified target Dec [deg]
ra_nom	278.39059236248	Nominal RA [deg]
dec_nom	-10.573120611921	Nominal Dec [deg]
roll_nom	283.3857623231	Nominal Roll [deg]
revision	3	Processing version of data
ontime	19998.007116735	[s]
livetime	19216.86183512	Ontime multiplied by DTCOR
l2events	1574504	Number of level 2 events

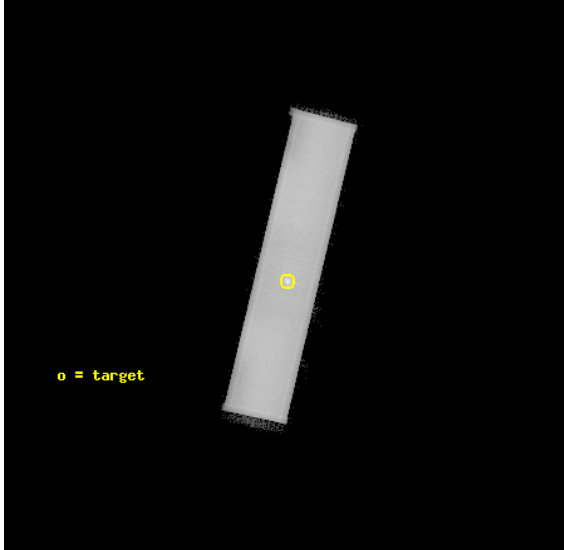


2 OBI

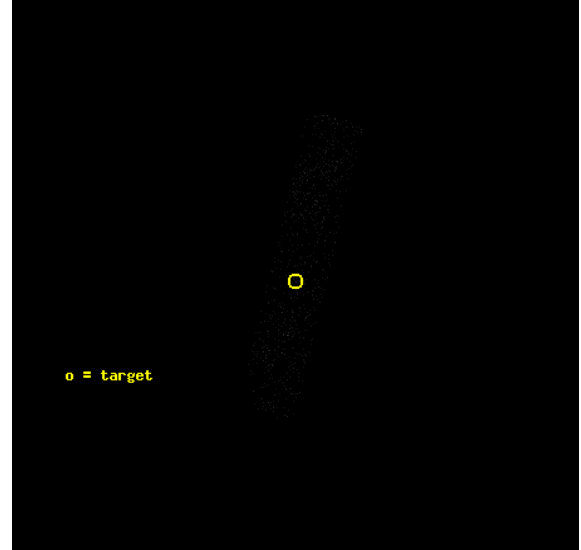
2.1 OBI

2.1.1 Images

Level 1 Image



Level 1 Bad Events



2.1.2 Parameters

obi_num	1	Obi number	sched_exp_time	19753.645000	[s] Scheduled observation exposure time
ascdsver	8.4.5	Processing system revision	ontime	19998.007116735	[s]
caldbver	4.5.2	 	l1events	1749157	Number of level 1 events
date	2012-11-07T20:45:25	Date and time of file creation			
revision	3	Processing version of data			

2.1.3 Events

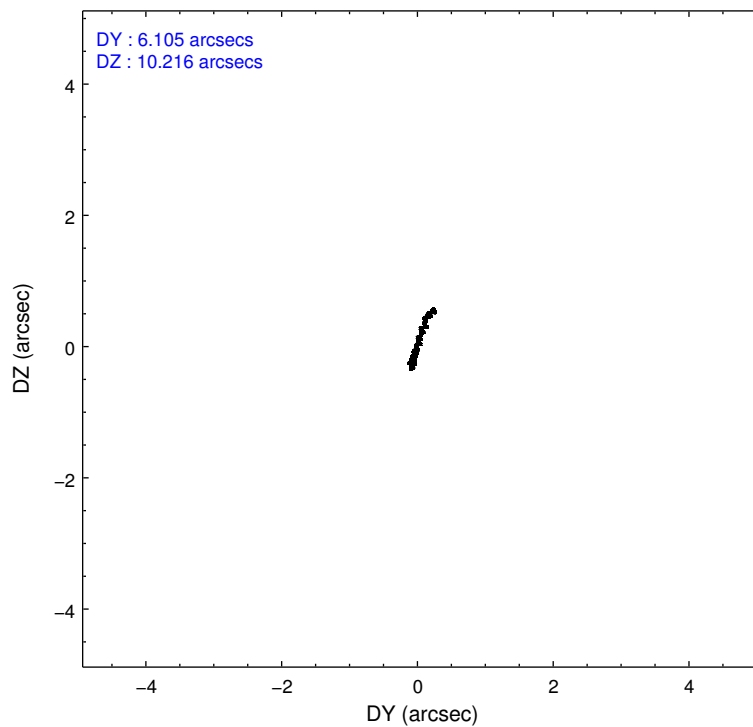
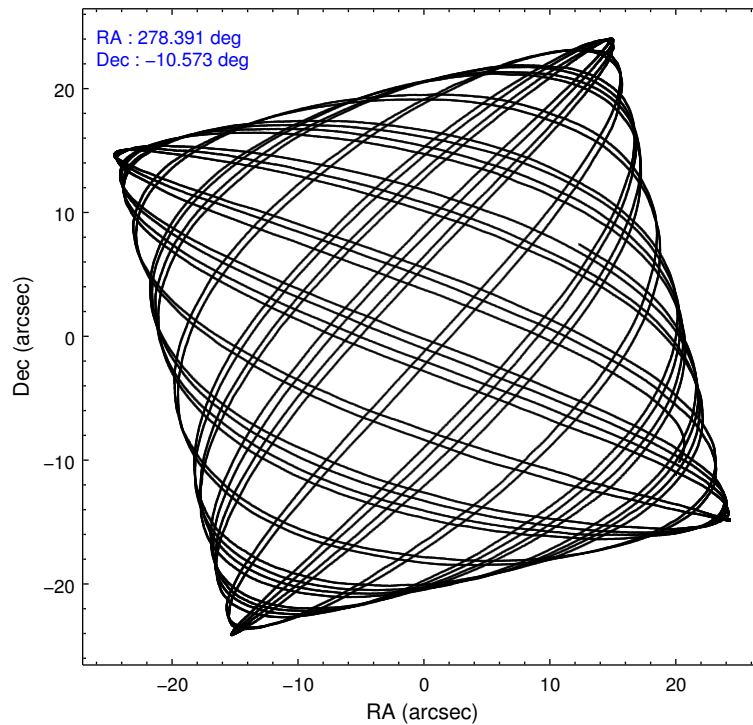
Level 1 Events

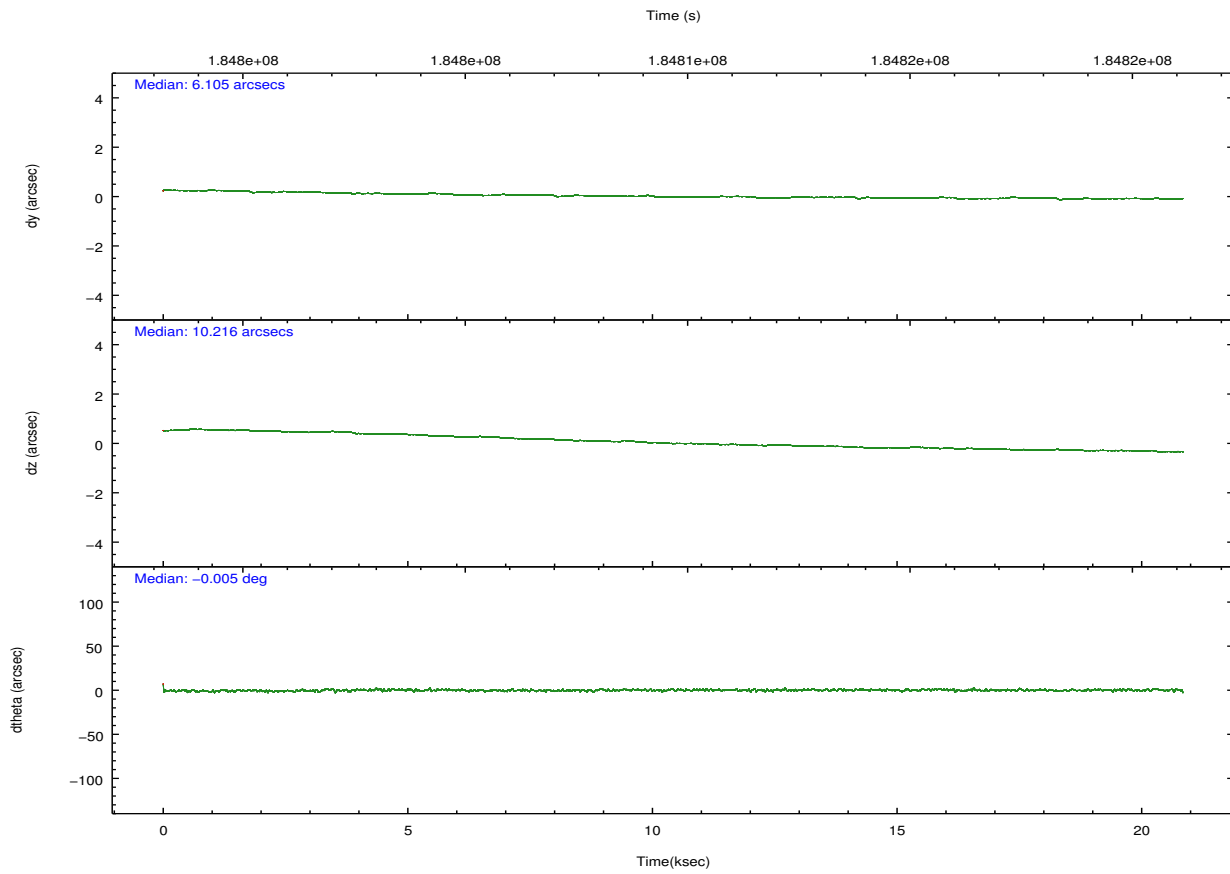
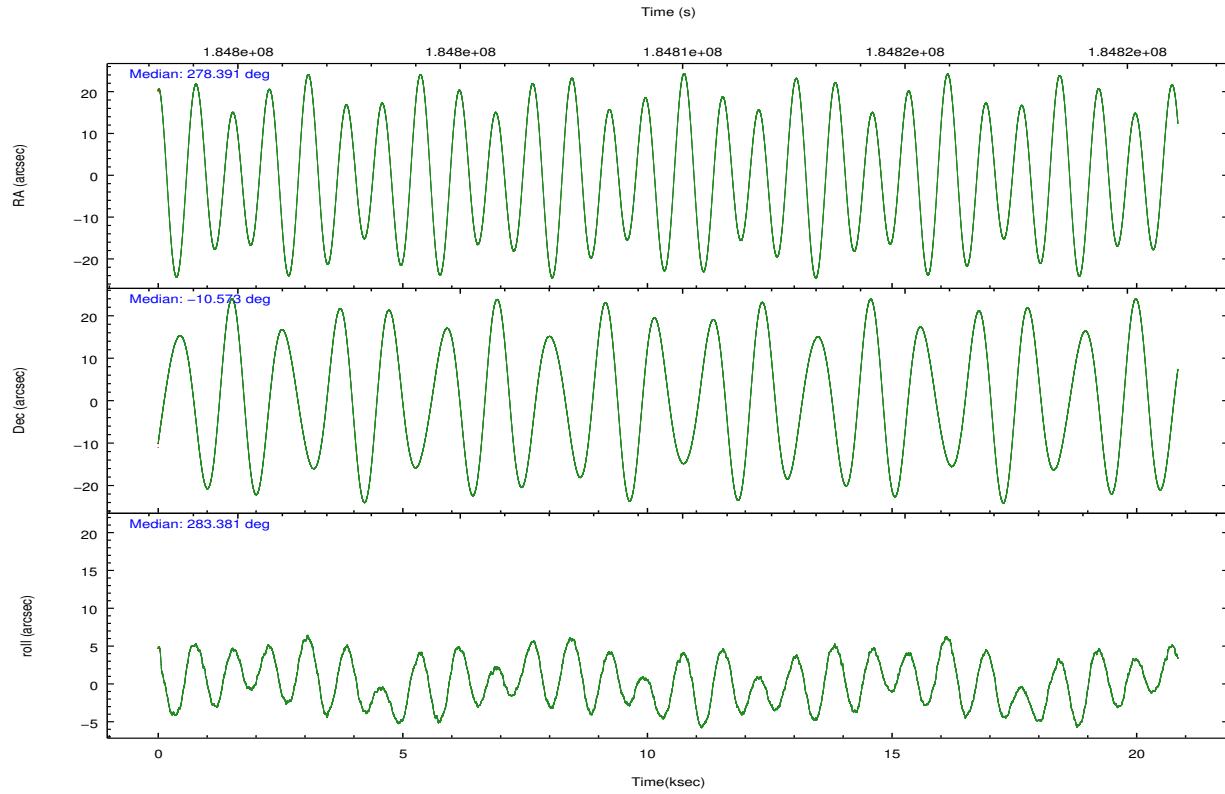
	segment 1	segment 2	segment 3
level 1 events	0	1749157	0
rejected events	0	7614	0
rejected %	0%	0%	0%

2.2 Compared Parameters

Parameter	Planned	Actual	Parameter	Planned	Actual
Instrument	HRC	HRC	Obspar format version number	7	7
Detector	HRC-S	HRC-S	Obspar file type	PREDICTED	ACTUAL
Grating	NONE	NONE	Obspar update status	NONE	UPDATED
Data mode	OBSERVING	OBSERVING			
Observation mode	POINTING	POINTING			
[deg] Pointing RA	278.369551	278.390592362477			
[deg] Pointing Dec	-10.553321	-10.57312061192141			
[deg] Pointing Roll	283.314570	283.3857623231025			
[s] Window start time (MET)	182563264.184000	182563264.184000			
[s] Window stop time (MET)	185241664.184000	185241664.184000			
[mm] SIM focus pos	-1.429586	-1.428180813131781			
[mm] SIM defocus	0.1037507710433287	0.1051558262725154			
[mm] SIM translation stage pos	250.455976	250.466033080201			
[mm] SIM translation stage offset	0	-0.01005468664627074			
[s] Observation start time (MET)	184799438.184000	184799061.97753			
Observation start date	2003-11-09T21:09:34	2003-11-09T21:04:21			
[s] Observation end time (MET)	184819192.184000	184820948.80348			
Observation end date	2003-11-10T02:38:48	2003-11-10T03:09:08			

2.3 Aspect





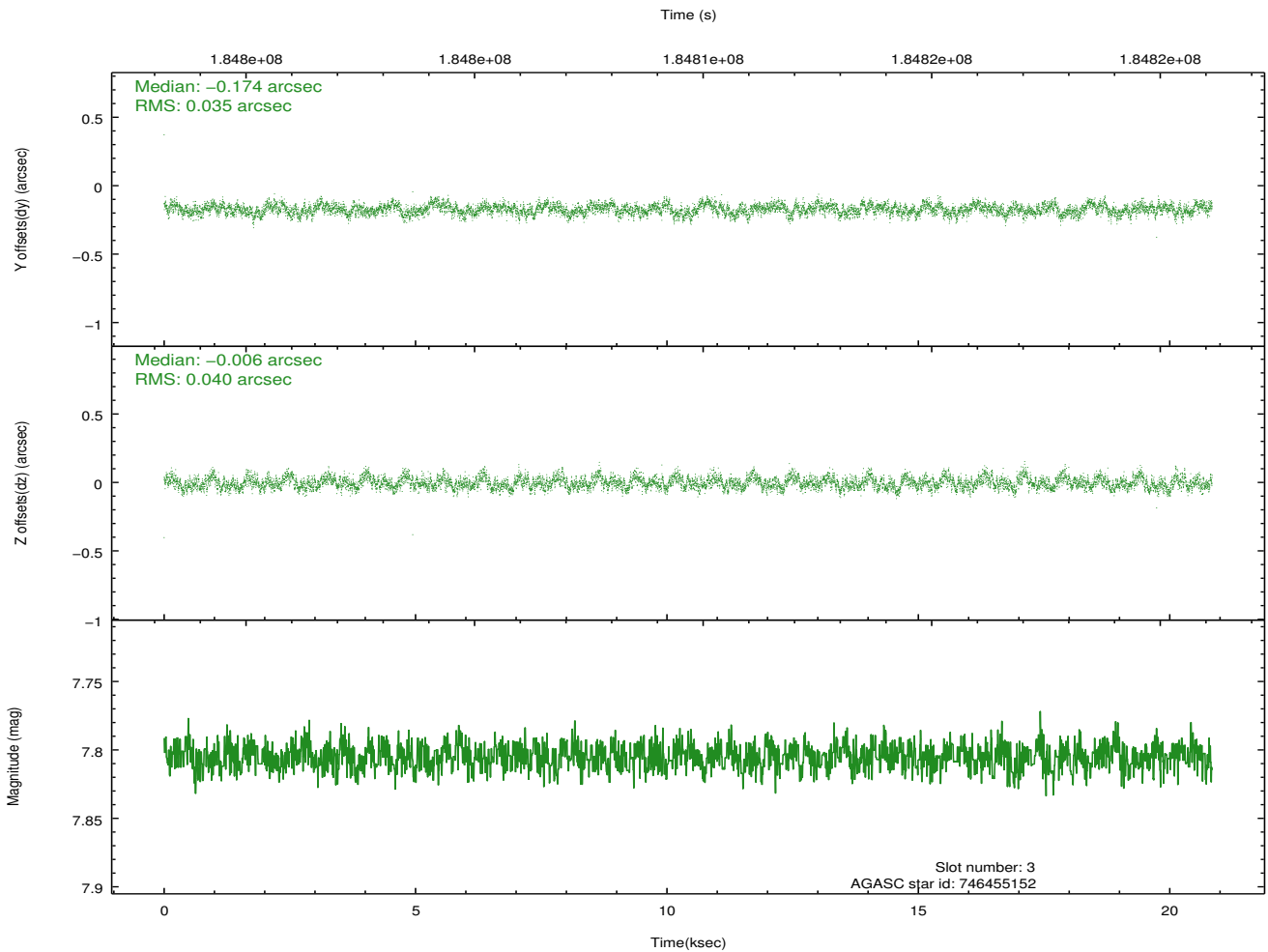
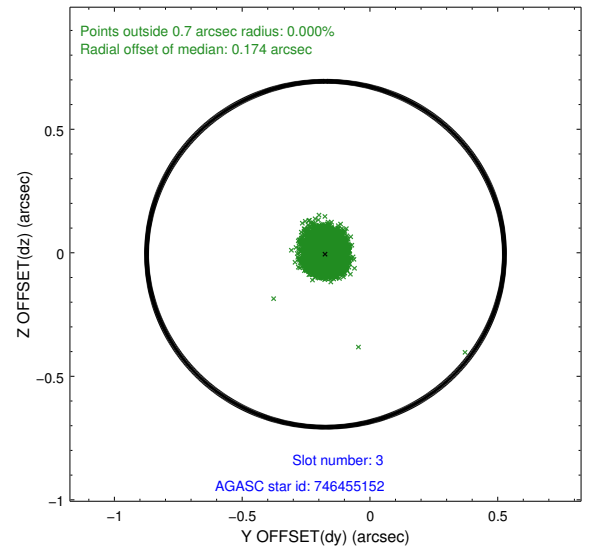
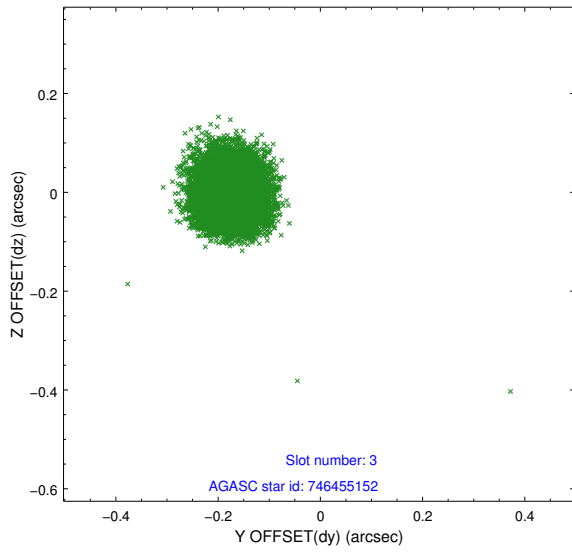
Slot Statistics

slot	status	id	mag	n_pts	med_dy	med_dz	dr1	dr2	ra	dec	mean_y	mean_z
0	FID	HRC-S-1	7.01	5085	0.096	-0.114	0.008	0.014	0.000000	0.000000	-1160.27	-458.97
1	FID	HRC-S-2	7.00	5085	0.144	-0.138	0.012	0.022	0.000000	0.000000	1239.23	-451.65
2	FID	HRC-S-4	6.97	5085	0.163	-0.052	0.013	0.023	0.000000	0.000000	1238.26	573.18
3	GUIDE	746455152	7.81	10163	-0.174	-0.006	0.056	0.090	278.447893	-9.976732	-1956.06	748.21
4	GUIDE	746460272	8.93	10163	-0.073	0.041	0.080	0.129	278.847488	-10.152127	-1014.55	1980.52
5	GUIDE	746462392	8.54	10156	0.122	0.056	0.069	0.112	279.038421	-10.890715	1729.87	2021.50
6	GUIDE	746462456	8.38	10166	-0.031	0.070	0.069	0.111	278.652171	-10.530173	150.41	992.80
7	GUIDE	746995400	9.54	10165	0.156	-0.164	0.126	0.204	278.078957	-11.289885	2345.03	-1609.02

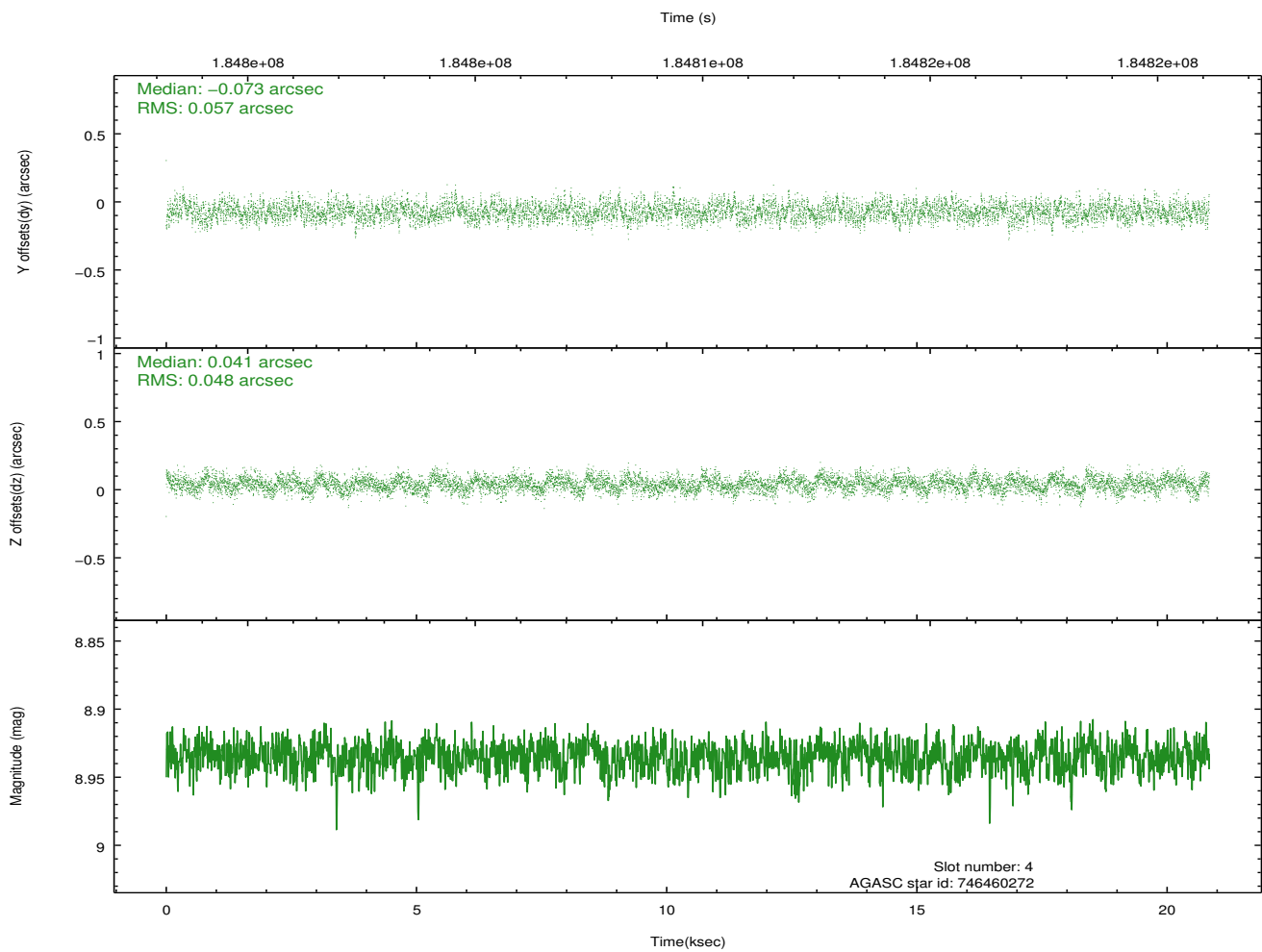
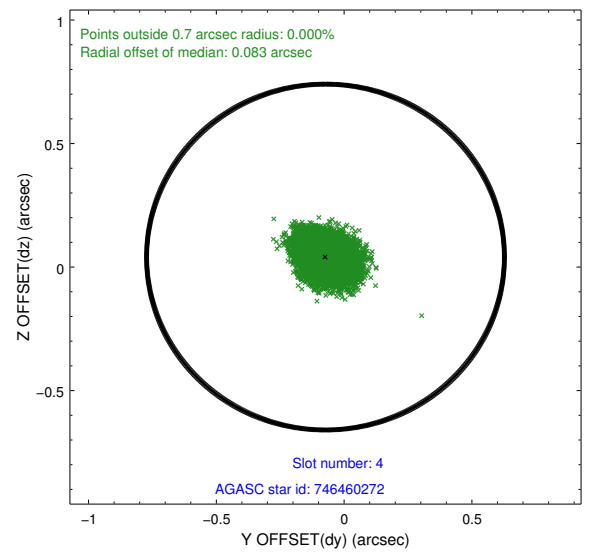
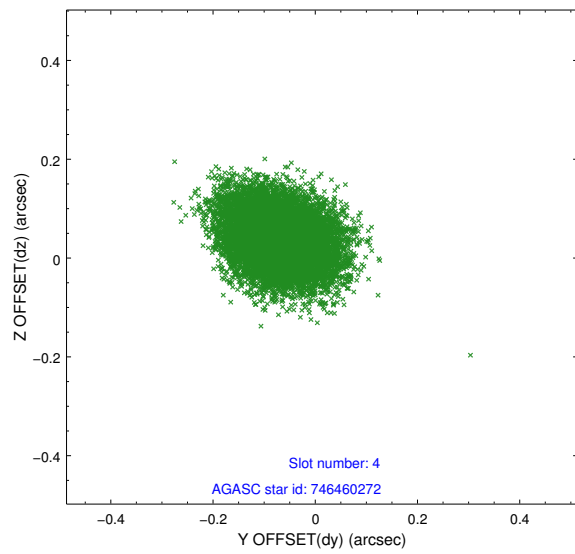
∞

2.4 Star Slots

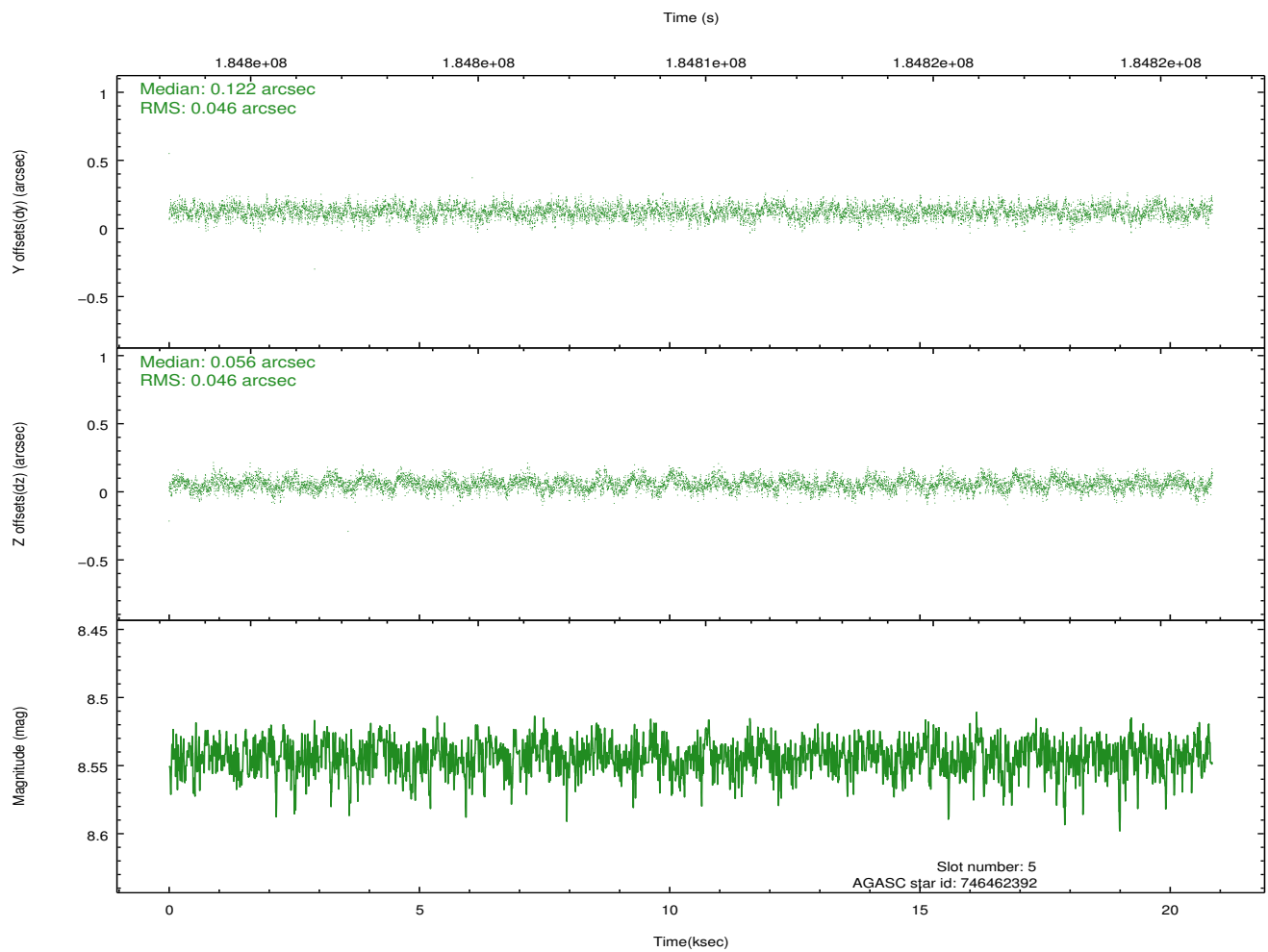
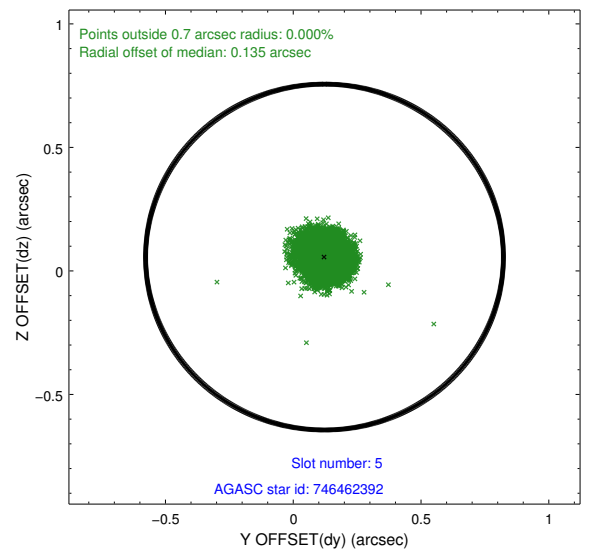
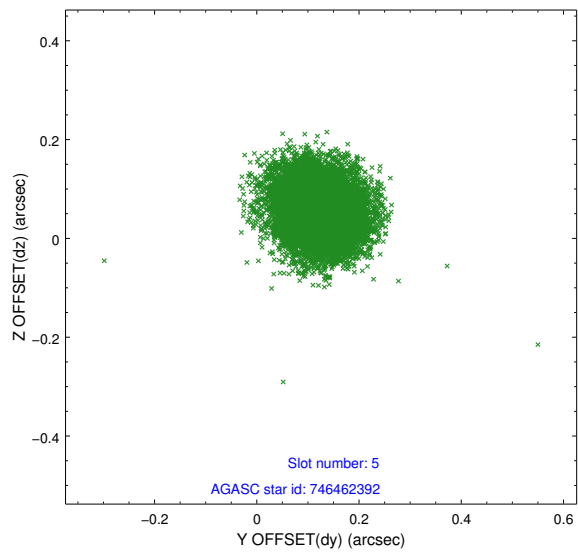
2.4.1 Slot 3



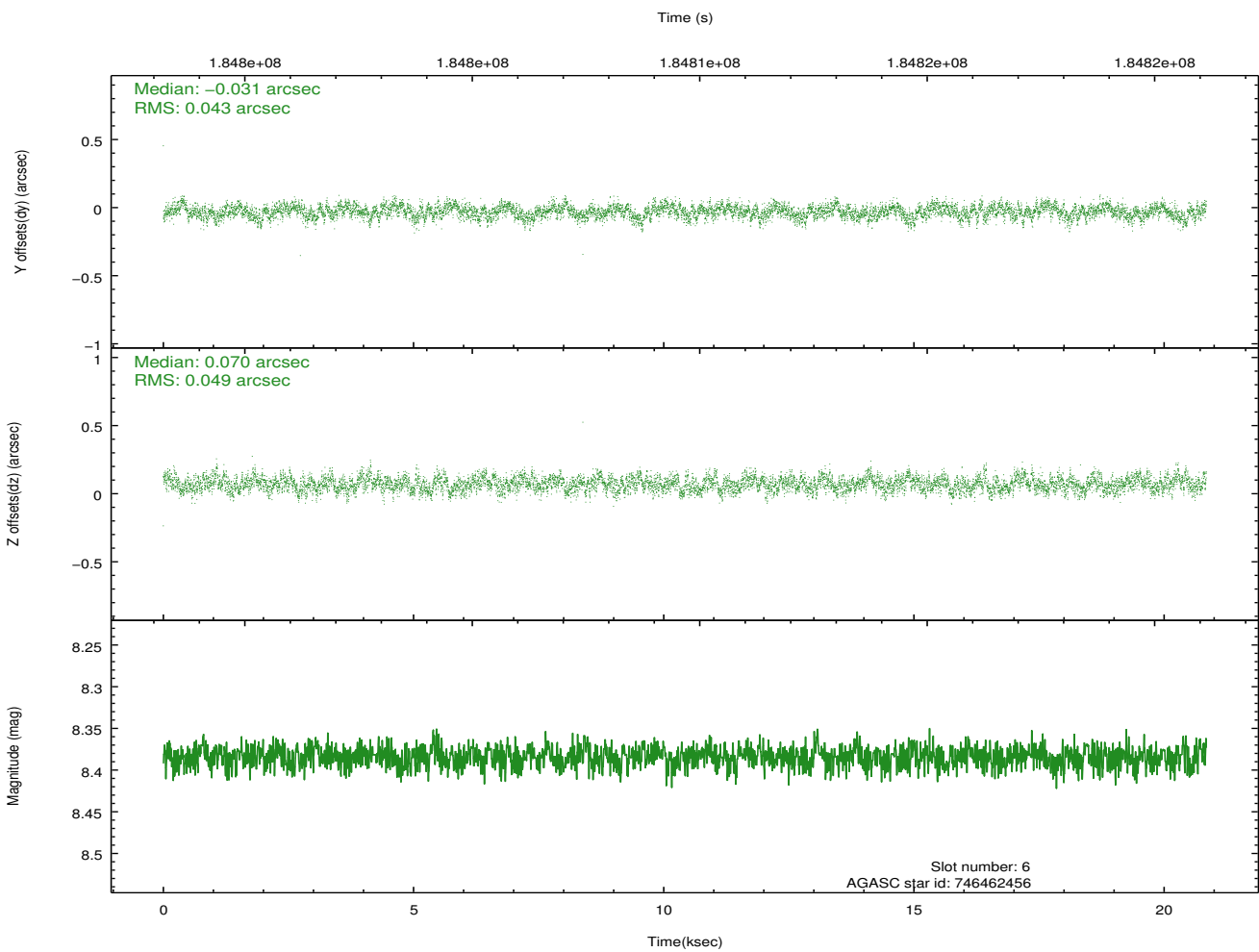
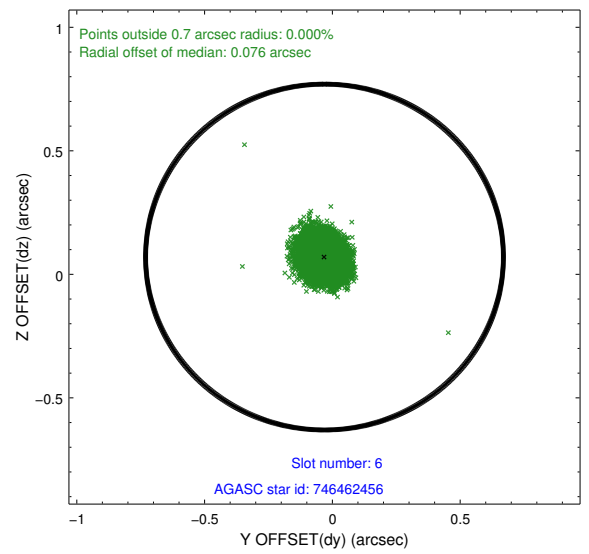
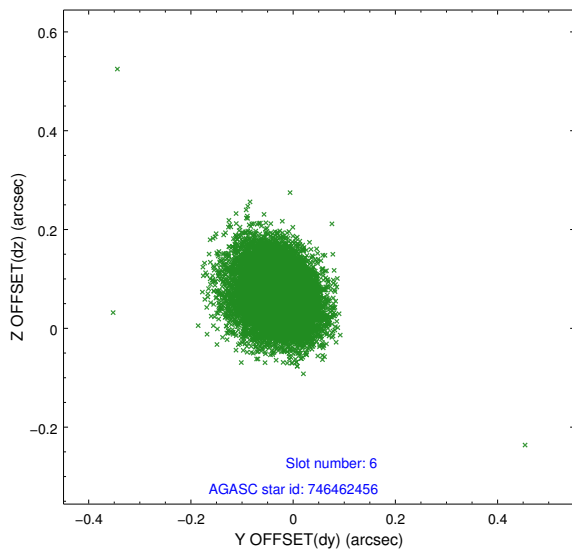
2.4.2 Slot 4



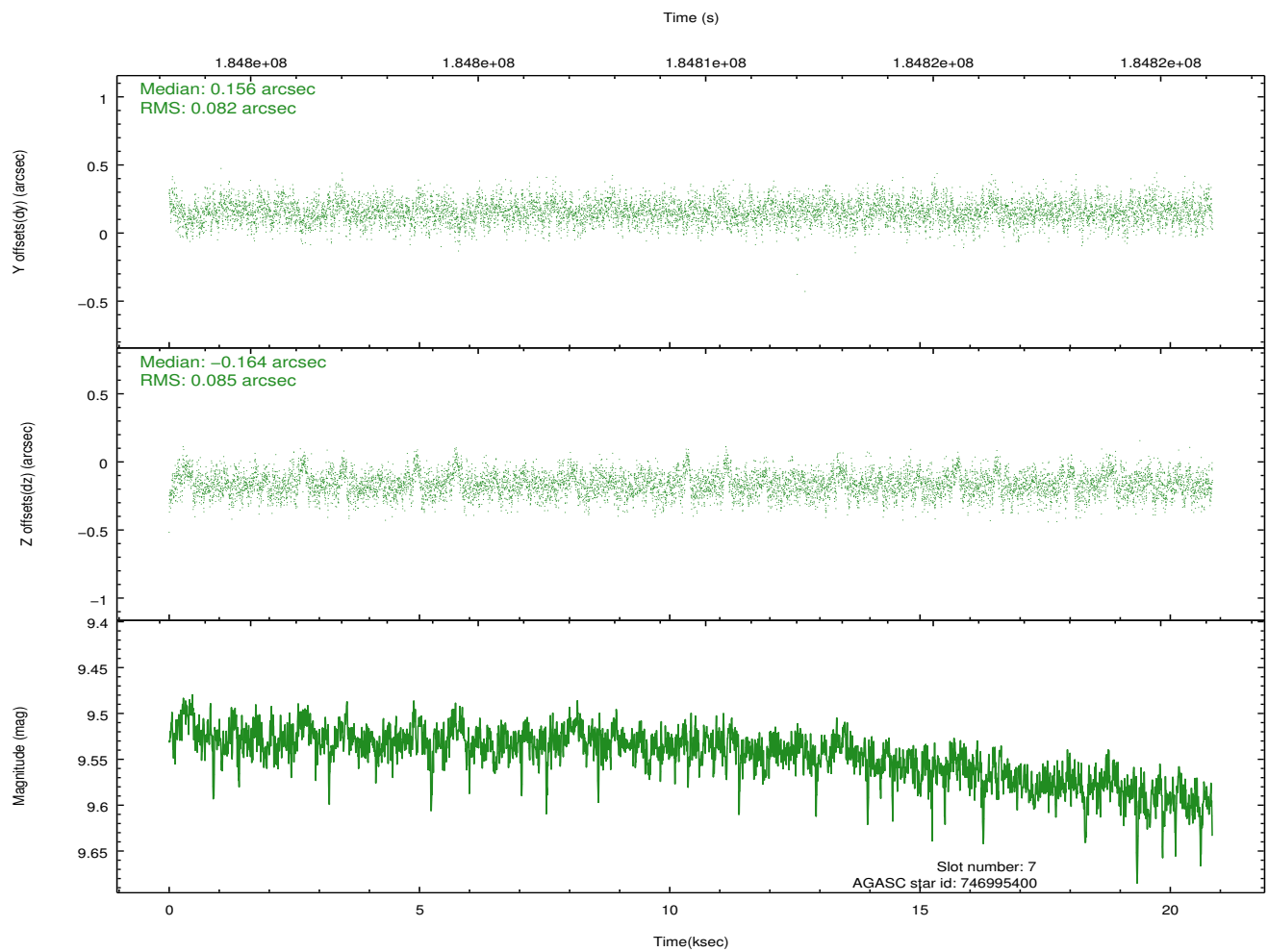
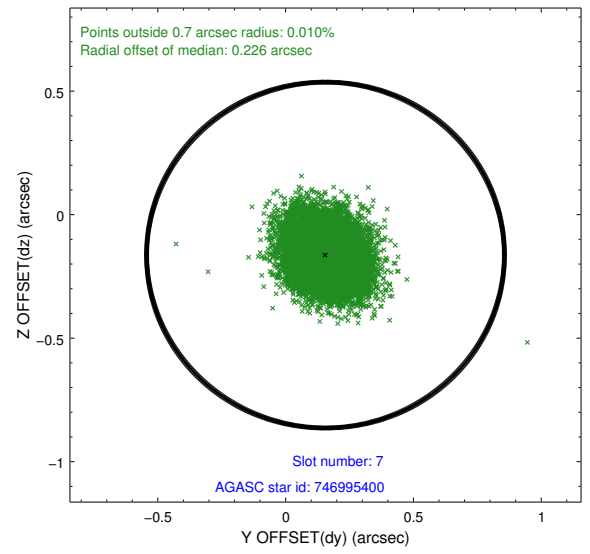
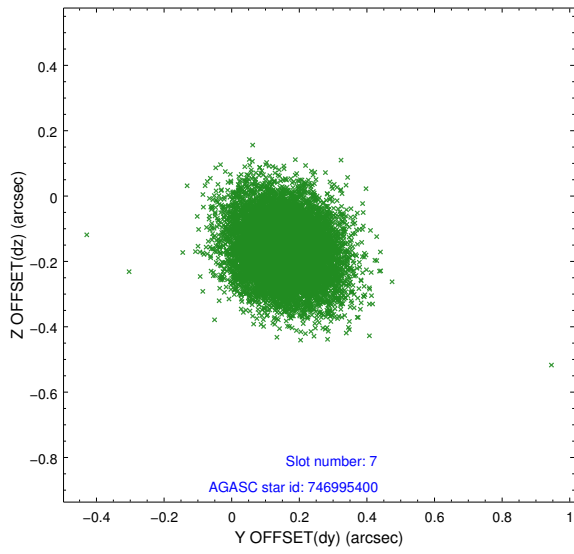
2.4.3 Slot 5



2.4.4 Slot 6

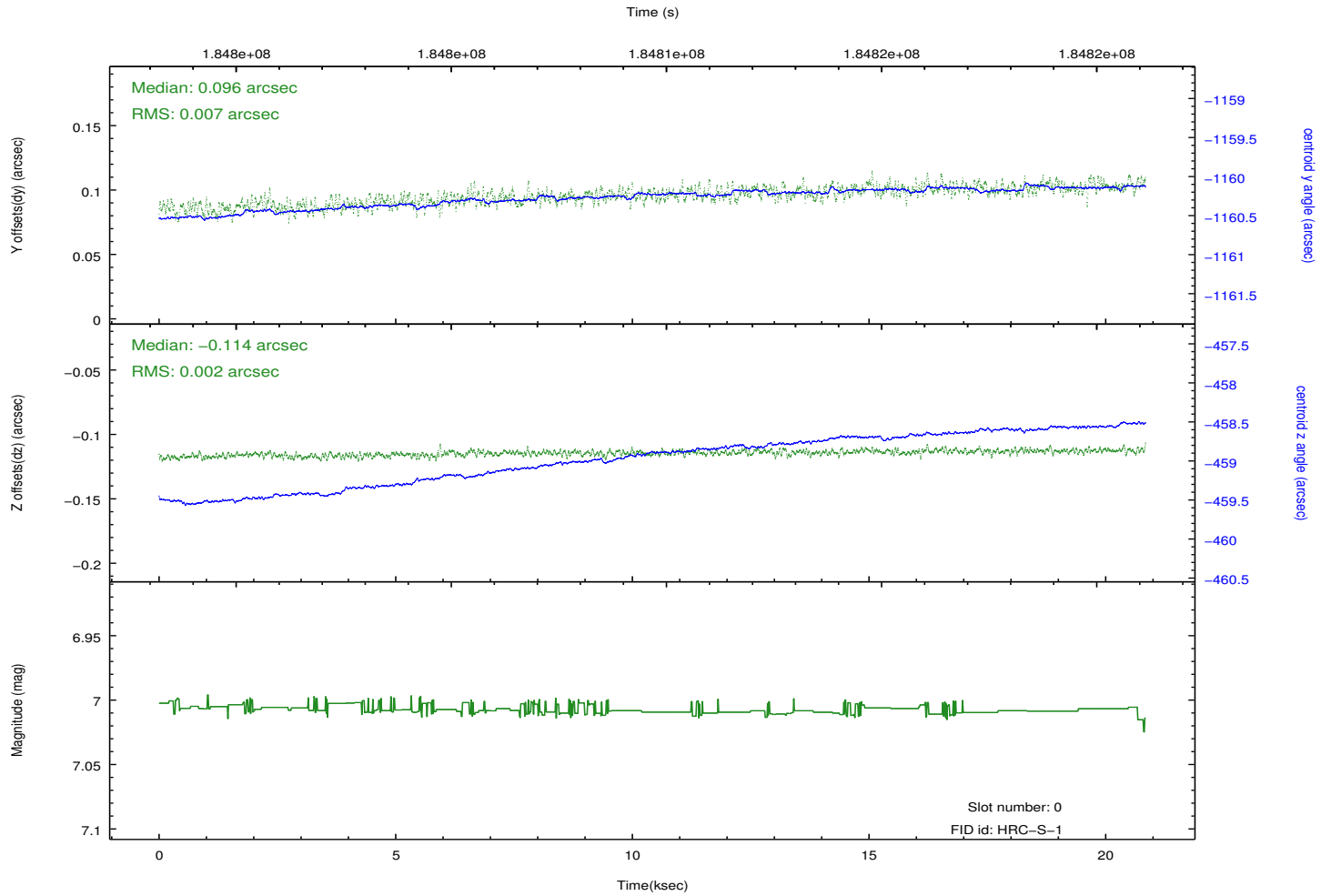
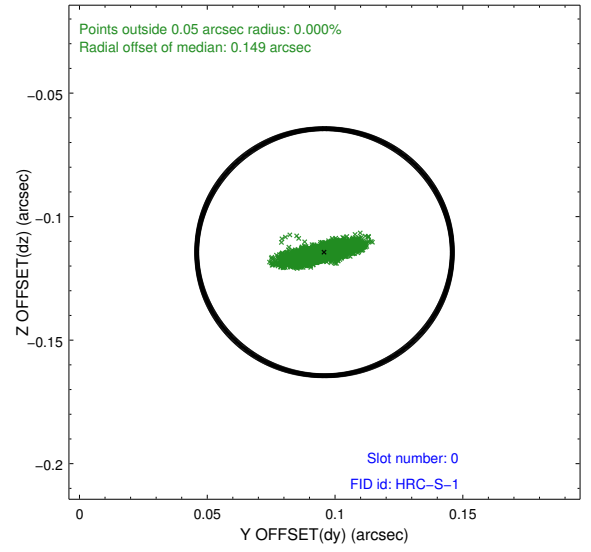
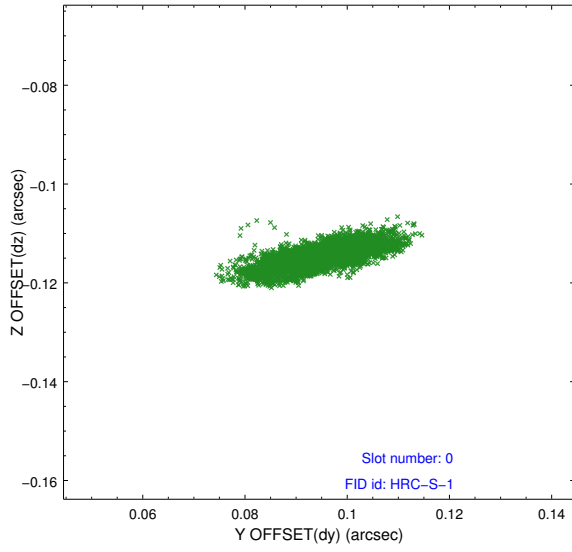


2.4.5 Slot 7

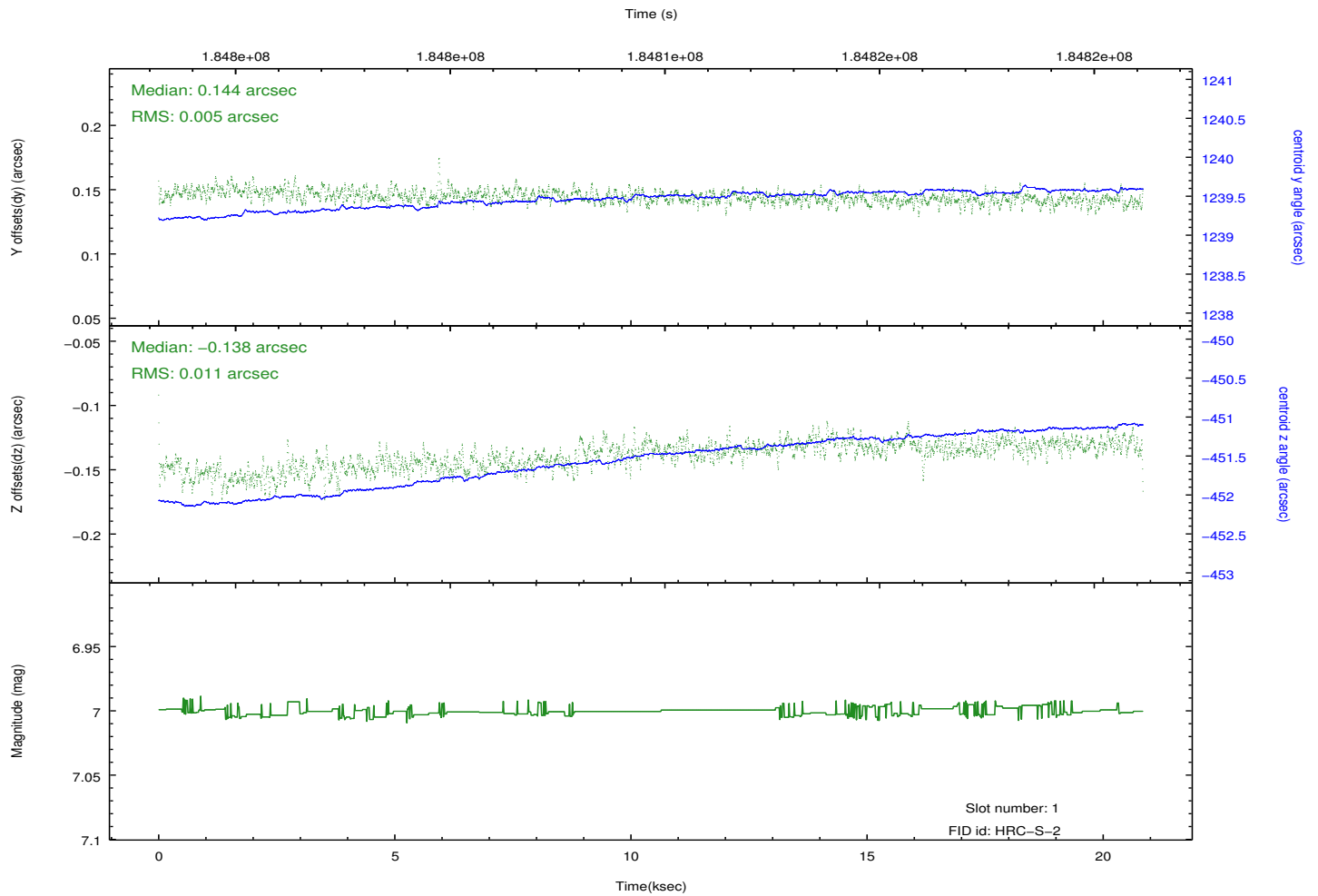
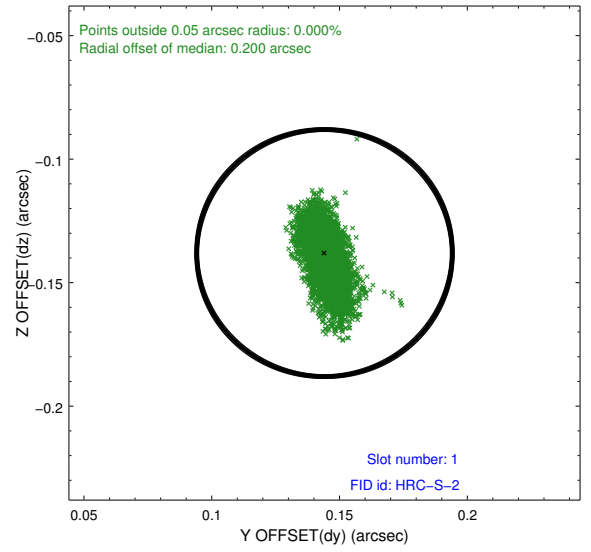
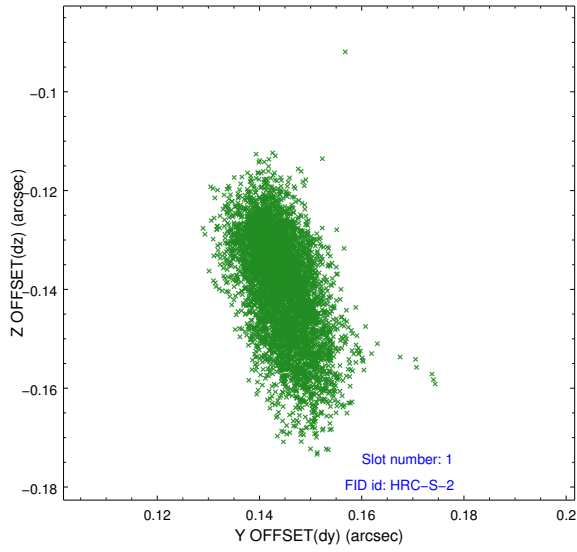


2.5 FID Slots

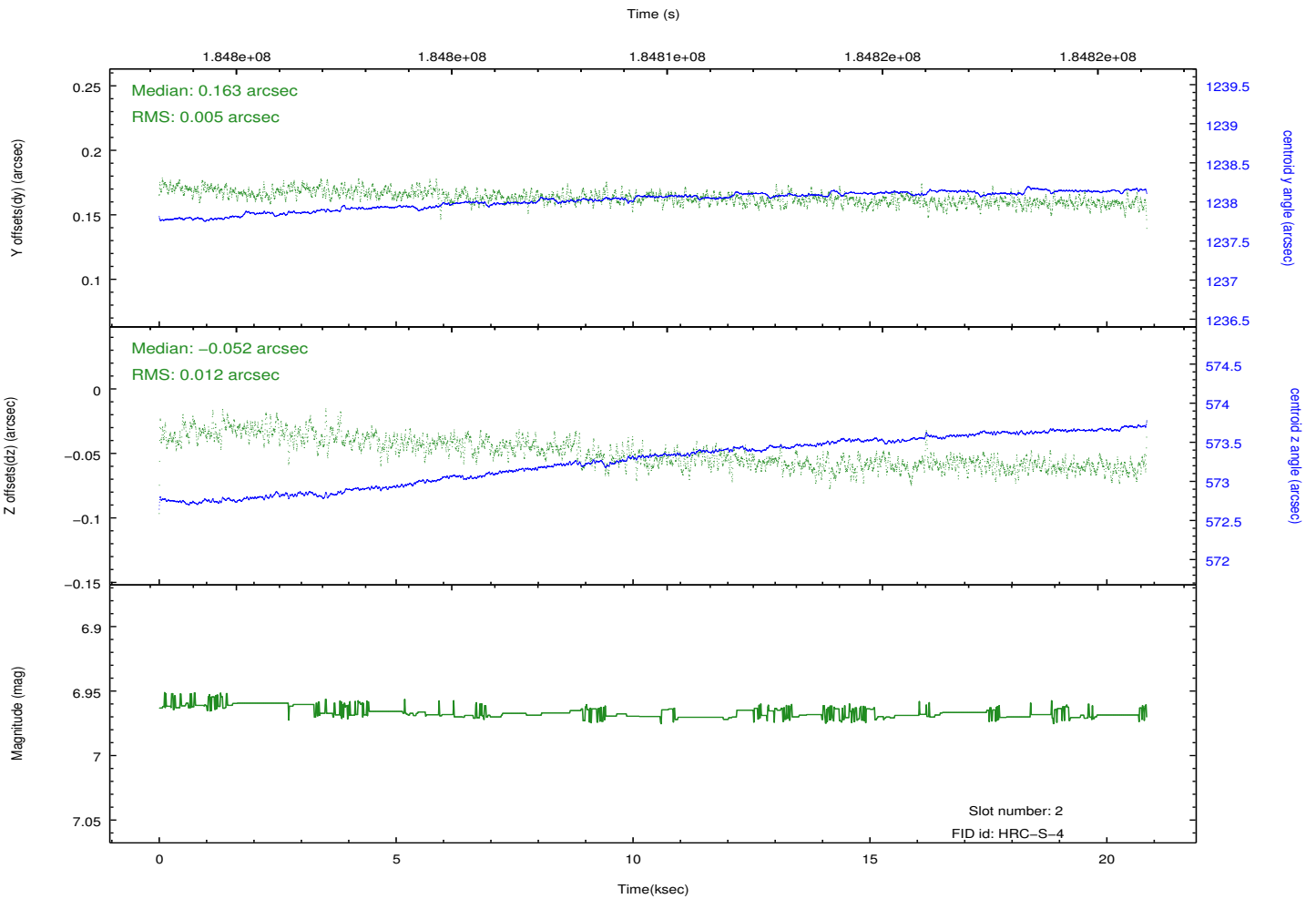
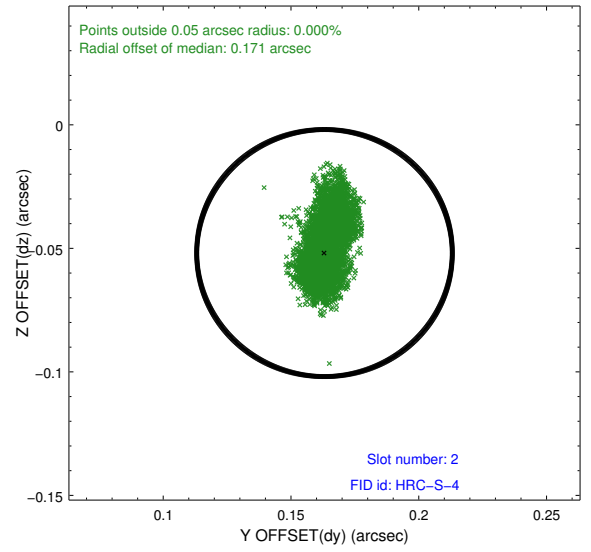
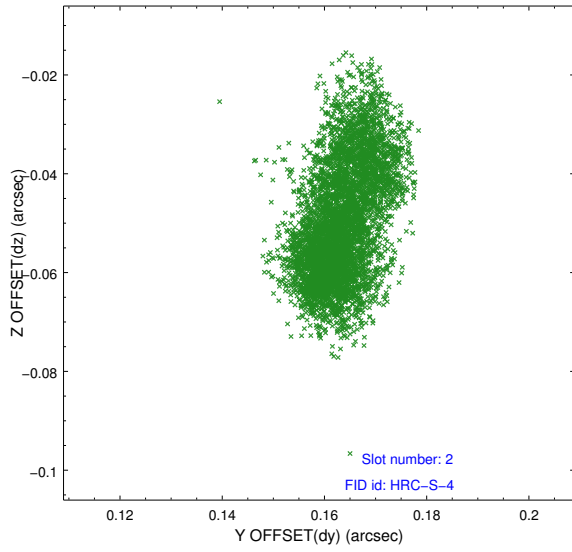
2.5.1 Slot 0



2.5.2 Slot 1



2.5.3 Slot 2



A Summary

A.1 Status

V&V Scientist	Jen Lauer
V&V Date (YYYY-MM-DD)	2012.11.30
V&V Edition	1
V&V Disposition and Status	OK
V&V Charge Time	19.998

A.2 Comments

Window constraint met.