

V&V Reference Report

L2 ASCDS Version : 8.4.5

Observation 3912 - L2 Version 3
Chandra X-Ray Center

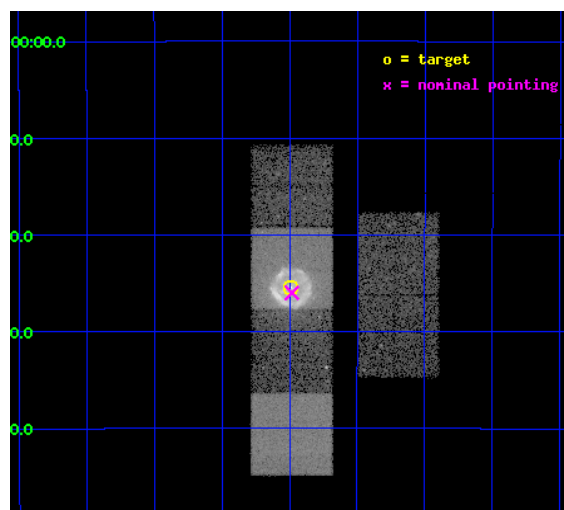
L2 Processing Date : Nov 3 2012

Contents

1	Front	2
2	OBI	3
2.1	OBI	3
2.1.1	Images	3
2.1.2	Bias	3
2.1.3	Parameters	4
2.1.4	Events	4
2.2	Compared Parameters	5
2.3	Aspect	6
2.4	Star Slots	9
2.4.1	Slot 3	9
2.4.2	Slot 4	10
2.4.3	Slot 5	11
2.4.4	Slot 6	12
2.4.5	Slot 7	13
2.5	FID Slots	14
2.5.1	Slot 0	14
2.5.2	Slot 1	15
2.5.3	Slot 2	16
A	Summary	17
A.1	Status	17
A.2	Comments	17

1 Front

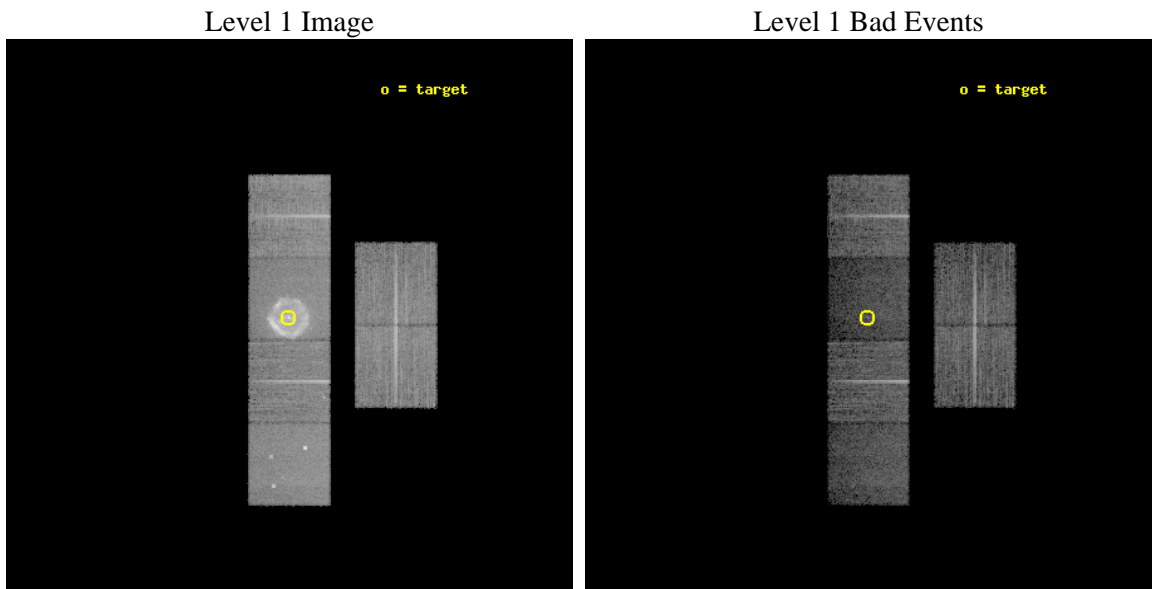
seq_num	500391	Sequence number
obs_id	3912	Observation id
title	THE DYNAMICS OF THE PULSAR WIND NEBULA IN G11.2-0.3	Proposal title
observer	Dr. Mallory Roberts	Principal investigator
object	G11.2-0.3	Source name
dtcycle	0	
cycle	P	events from which exps? Prim/Second/Both
ra_targ	272.8725	Observer's specified target RA [deg]
dec_targ	-19.423611	Observer's specified target Dec [deg]
ra_nom	272.87074486908	Nominal RA [deg]
dec_nom	-19.433151895671	Nominal Dec [deg]
roll_nom	270.06068553803	Nominal Roll [deg]
revision	3	Processing version of data
ontime	14863.900077432	Sum of GTIs [s]
livetime	14675.684424686	Livetime [s]
ontime2	14860.700147152	Sum of GTIs [s]
ontime3	14863.776957422	Sum of GTIs [s]
ontime5	14863.859037429	Sum of GTIs [s]
ontime6	14863.817997426	Sum of GTIs [s]
ontime7	14863.900077432	Sum of GTIs [s]
ontime8	14863.735917449	Sum of GTIs [s]
l2events	189573	Number of level 2 events



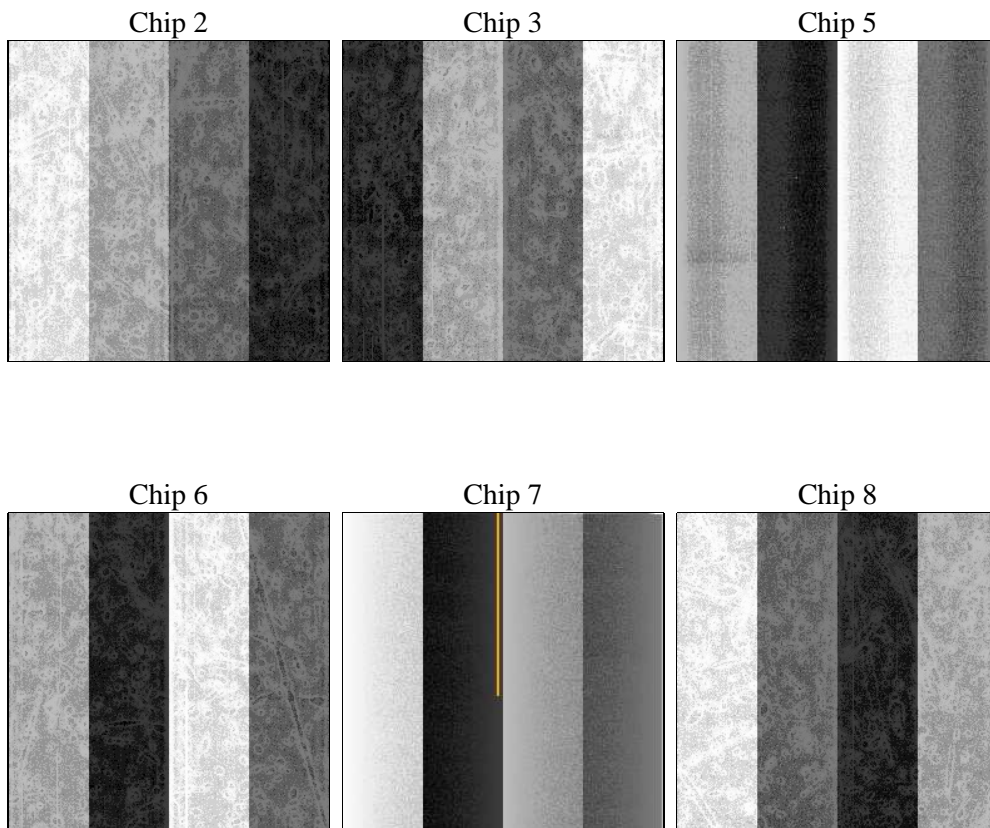
2 OBI

2.1 OBI

2.1.1 Images



2.1.2 Bias



2.1.3 Parameters

obi_num	0	Obi number	sched_exp_time	14832.000000	[s] Scheduled observation exposure time
ascdsver	8.4.5	Processing system revision	ontime	14863.900077432	Sum of GTIs [s]
caldbver	4.5.2	 	ontime2	14860.700147152	Sum of GTIs [s]
date	2012-11-03T19:30:30	Date and time of file creation	ontime3	14863.776957422	Sum of GTIs [s]
revision	3	Processing version of data	ontime5	14863.859037429	Sum of GTIs [s]
			ontime6	14863.817997426	Sum of GTIs [s]
			ontime7	14863.900077432	Sum of GTIs [s]
			ontime8	14863.735917449	Sum of GTIs [s]
			l1events	560412	Number of level 1 events

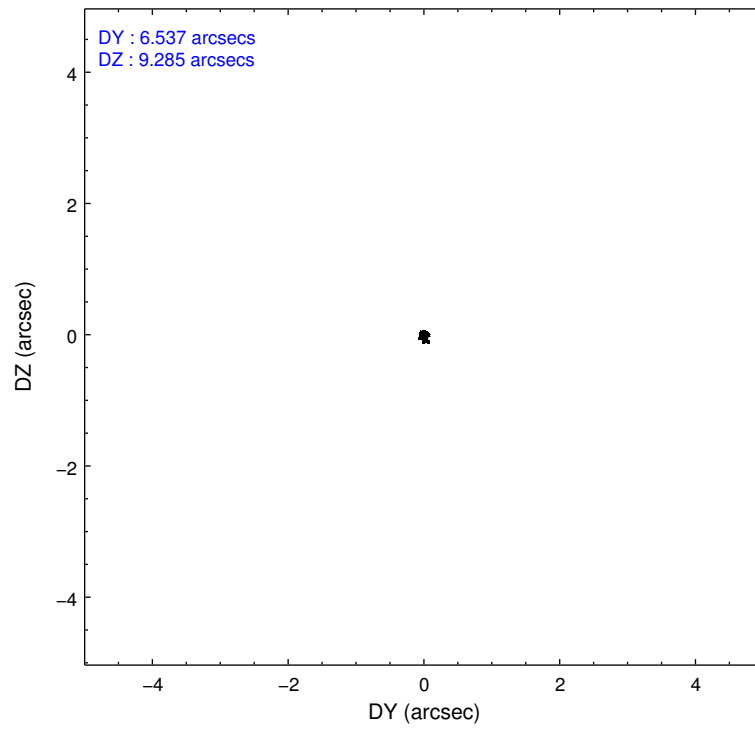
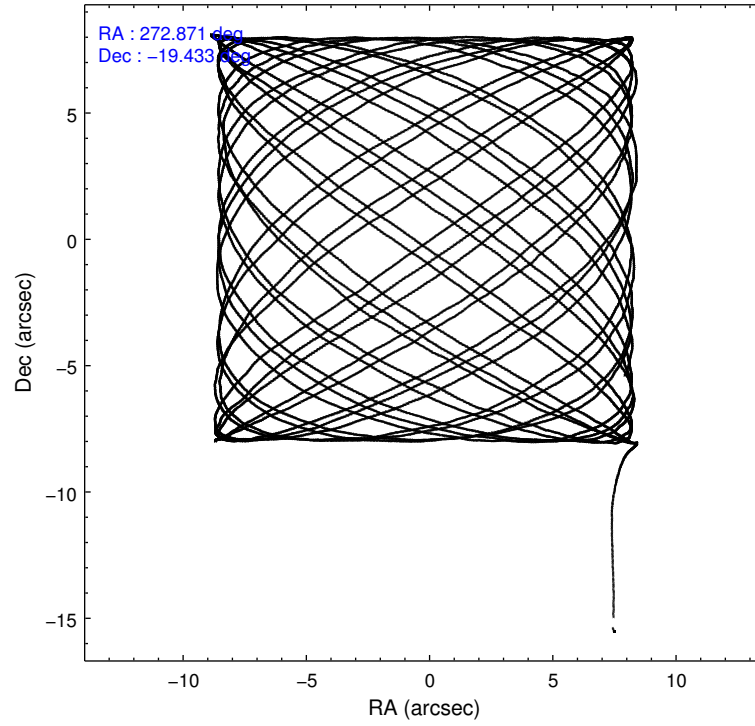
2.1.4 Events

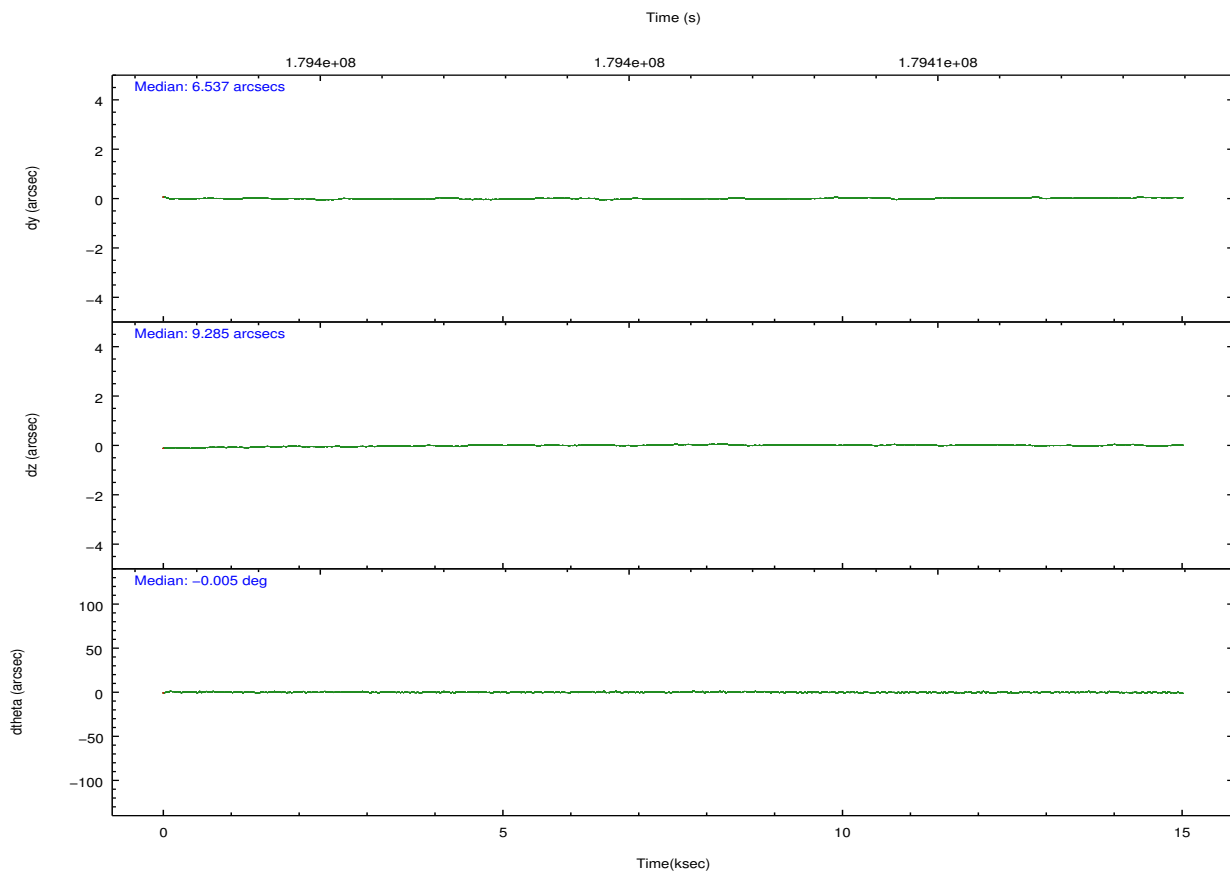
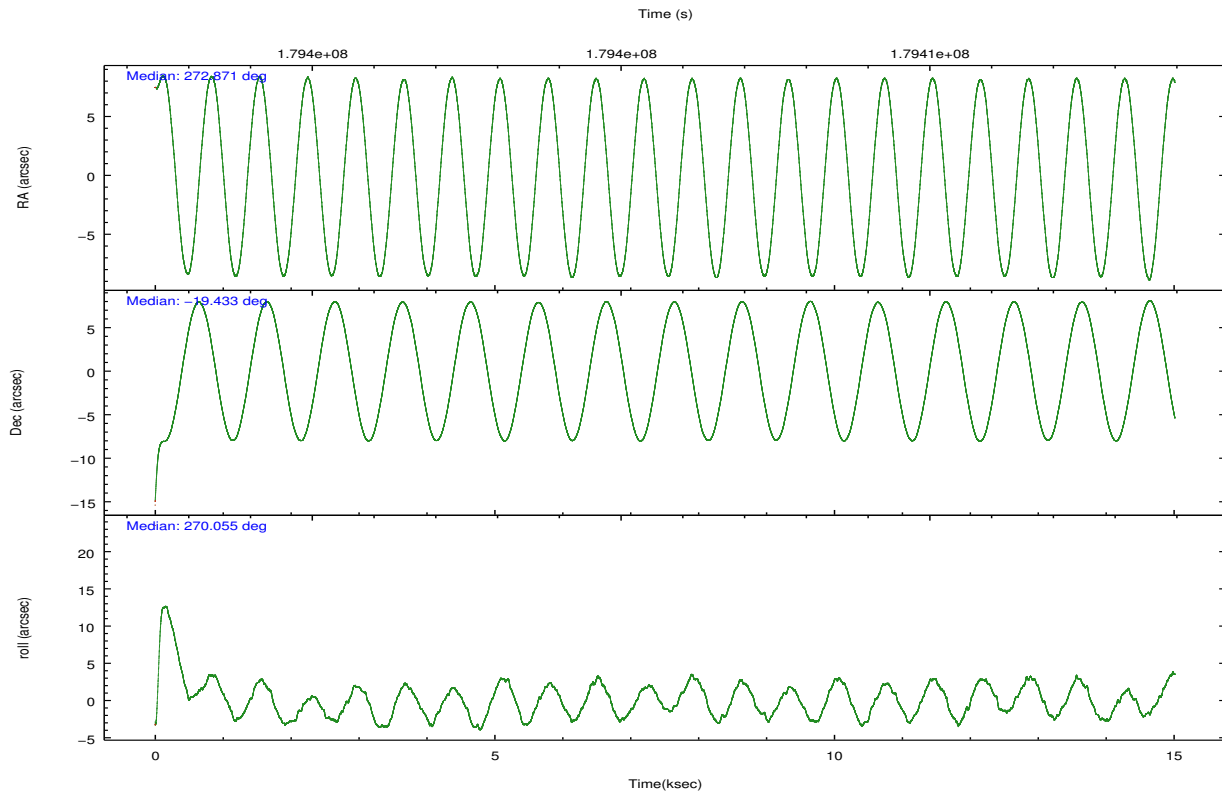
	ccd 2	ccd 3	ccd 5	ccd 6	ccd 7	ccd 8		ccd 2	ccd 3	ccd 5	ccd 6	ccd 7	ccd 8
level 1 events	81182	71924	90204	74536	149925	92641	grade 0 events	3810	4188	7513	6046	23136	7676
rejected events	72714	63200	41607	63094	35597	70380		4%	5%	8%	8%	15%	8%
rejected %	89%	87%	46%	84%	23%	75%	grade 1 events	39	44	119	47	86	60
								0%	0%	0%	0%	0%	0%
							grade 2 events	1751	1540	13762	1923	28695	4644
								2%	2%	15%	2%	19%	5%
							grade 3 events	866	829	2238	961	13011	2338
								1%	1%	2%	1%	8%	2%
							grade 4 events	834	842	2114	956	12626	2303
								1%	1%	2%	1%	8%	2%
							grade 5 events	1932	2334	7050	2449	7854	3660
								2%	3%	7%	3%	5%	3%
							grade 6 events	1213	1331	22995	1558	36909	5304
								1%	1%	25%	2%	24%	5%
							grade 7 events	70737	60816	34413	60596	27608	66656
								87%	84%	38%	81%	18%	71%

2.2 Compared Parameters

Parameter	Planned	Actual	Parameter	Planned	Actual
Instrument	ACIS	ACIS	Obspar format version number	7	7
Detector	ACIS-235678	ACIS-235678	Obspar file type	PREDICTED	ACTUAL
Grating	NONE	NONE	Obspar update status	NONE	UPDATED
Data mode	VFAINT	VFAINT	Number of optional ACIS chips dropped	0	0
Observation mode	POINTING	POINTING	On-chip summing requested	N	N
[deg] Pointing RA	272.855912	272.8707448690777	Subarray requested	NONE	NONE
[deg] Pointing Dec	-19.409743	-19.43315189567088	Alternating exposures requested	N	N
[deg] Pointing Roll	269.899139	270.0606855380286	[s] Primary exposure time	0.000000	3.2
[mm] SIM focus pos	-0.684267	-0.6828225247311905			
[mm] SIM defocus	0	0.001444936568705701			
[mm] SIM translation stage pos	-190.132523	-190.1400660498719			
[mm] SIM translation stage offset	0	0.00754346686406393			
[s] Observation start time (MET)	179398389.184000	179397391.18272			
Observation start date	2003-09-08T08:52:05	2003-09-08T08:36:31			
[s] Observation end time (MET)	179413221.184000	179414105.85844			
Observation end date	2003-09-08T12:59:17	2003-09-08T13:15:05			
Read mode	TIMED	TIMED			

2.3 Aspect



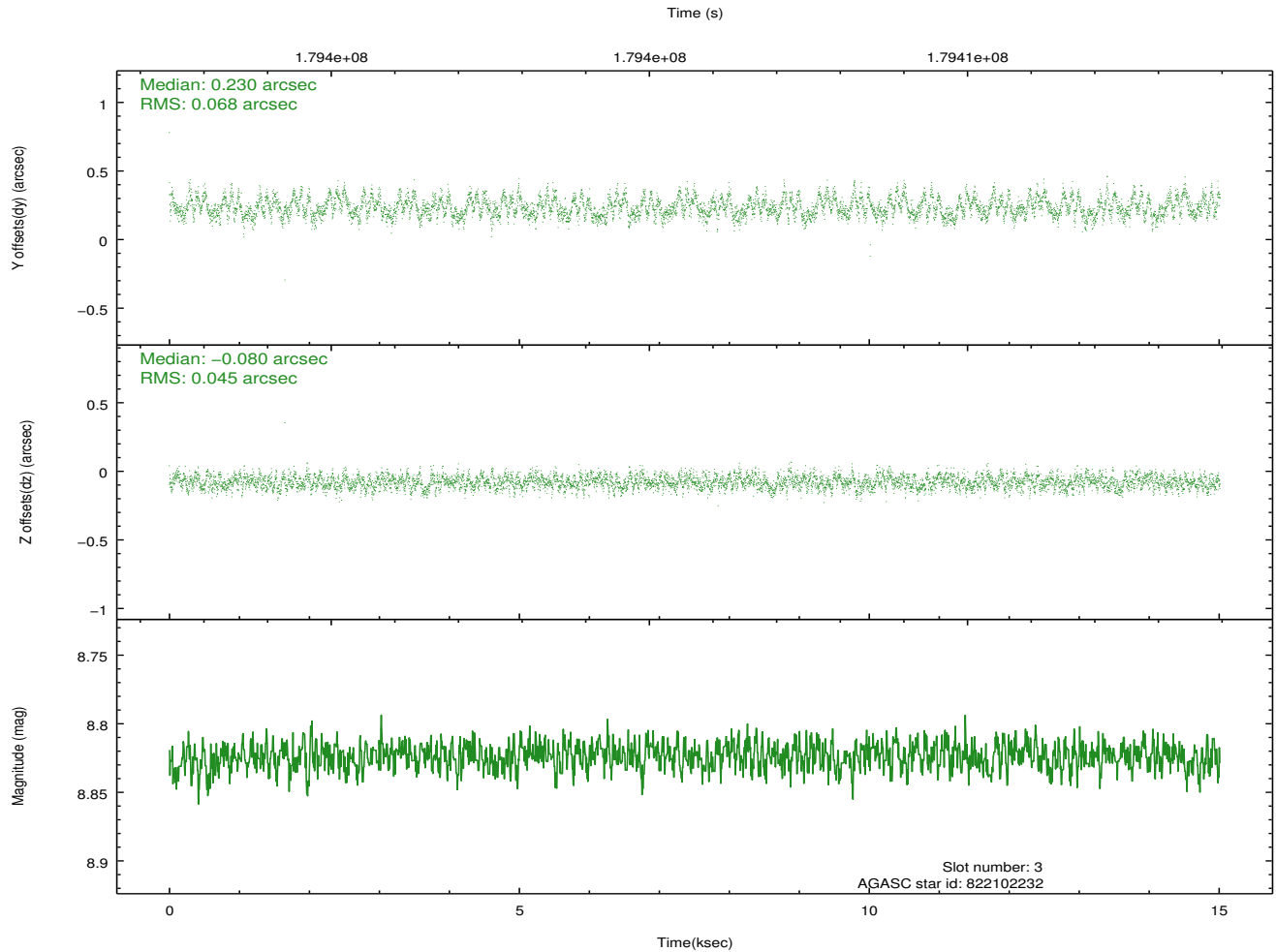
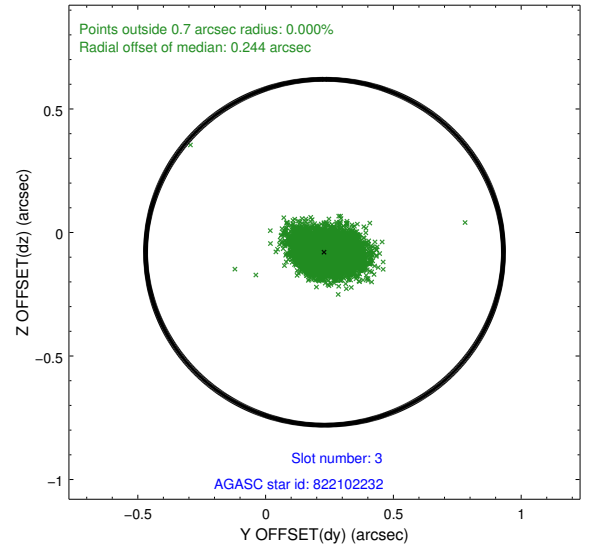
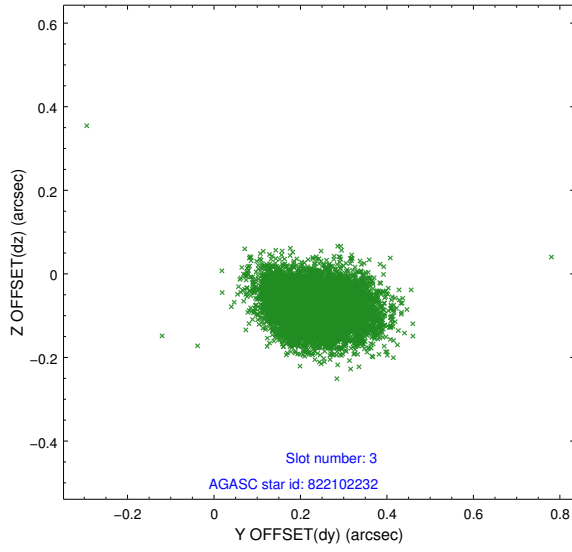


Slot Statistics

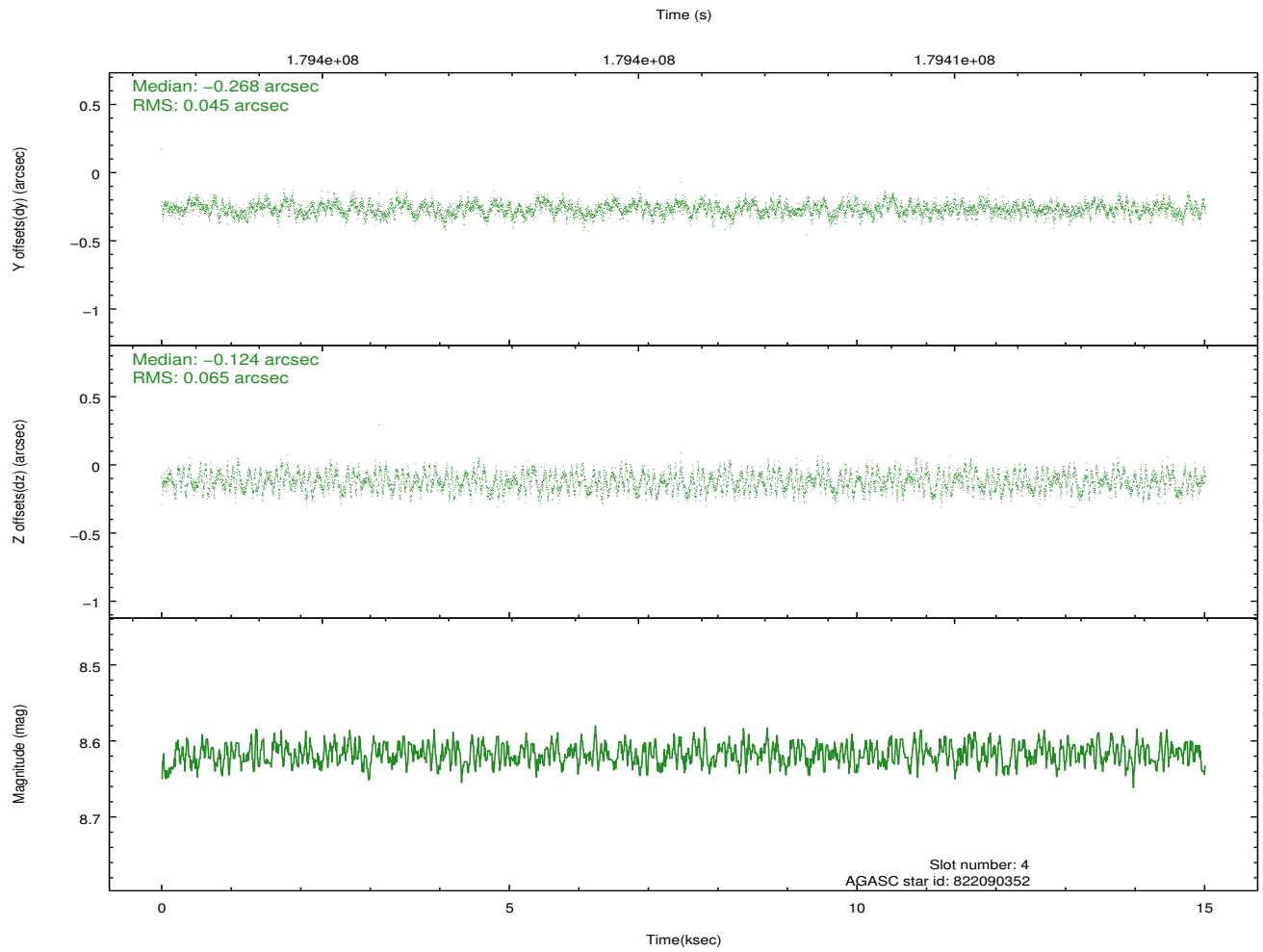
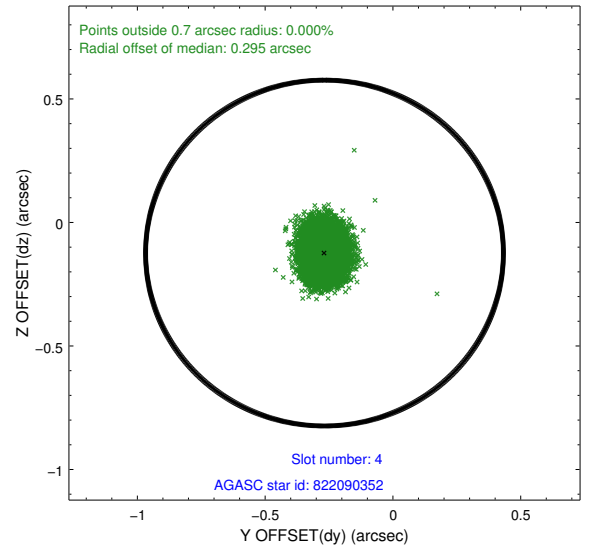
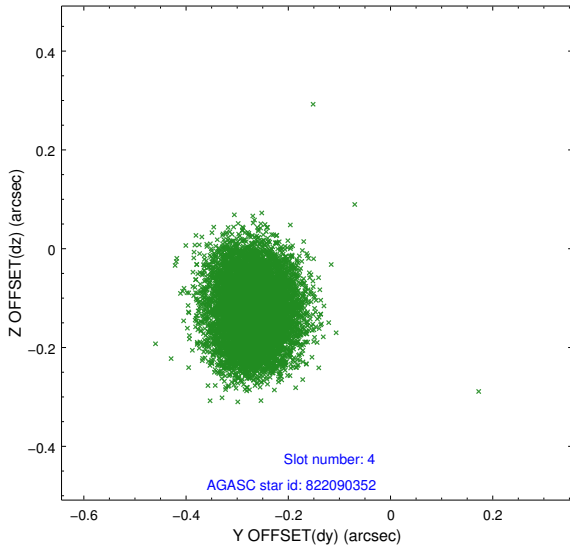
slot	status	id	mag	n_pts	med_dy	med_dz	dr1	dr2	ra	dec	mean_y	mean_z
0	FID	ACIS-S-1	7.18	3663	0.030	-0.010	0.006	0.011	0.000000	0.000000	936.77	-1726.15
1	FID	ACIS-S-5	7.23	3662	-0.056	0.029	0.006	0.010	0.000000	0.000000	-1812.12	171.16
2	FID	ACIS-S-6	7.35	3663	0.005	-0.007	0.007	0.011	0.000000	0.000000	402.00	815.40
3	GUIDE	822102232	8.82	7321	0.230	-0.080	0.086	0.139	272.350923	-20.034935	2257.03	-1703.91
4	GUIDE	822090352	8.62	7323	-0.268	-0.124	0.086	0.130	272.203907	-18.976234	-1552.00	-2222.96
5	GUIDE	822102528	9.31	7319	0.248	-0.083	0.097	0.156	272.446853	-20.048949	2305.79	-1379.54
6	GUIDE	822085152	9.00	7320	-0.167	0.086	0.075	0.119	272.974056	-19.057083	-1269.70	399.56
7	GUIDE	822092816	9.50	7315	-0.046	0.199	0.087	0.142	273.207975	-19.445846	129.09	1195.64

2.4 Star Slots

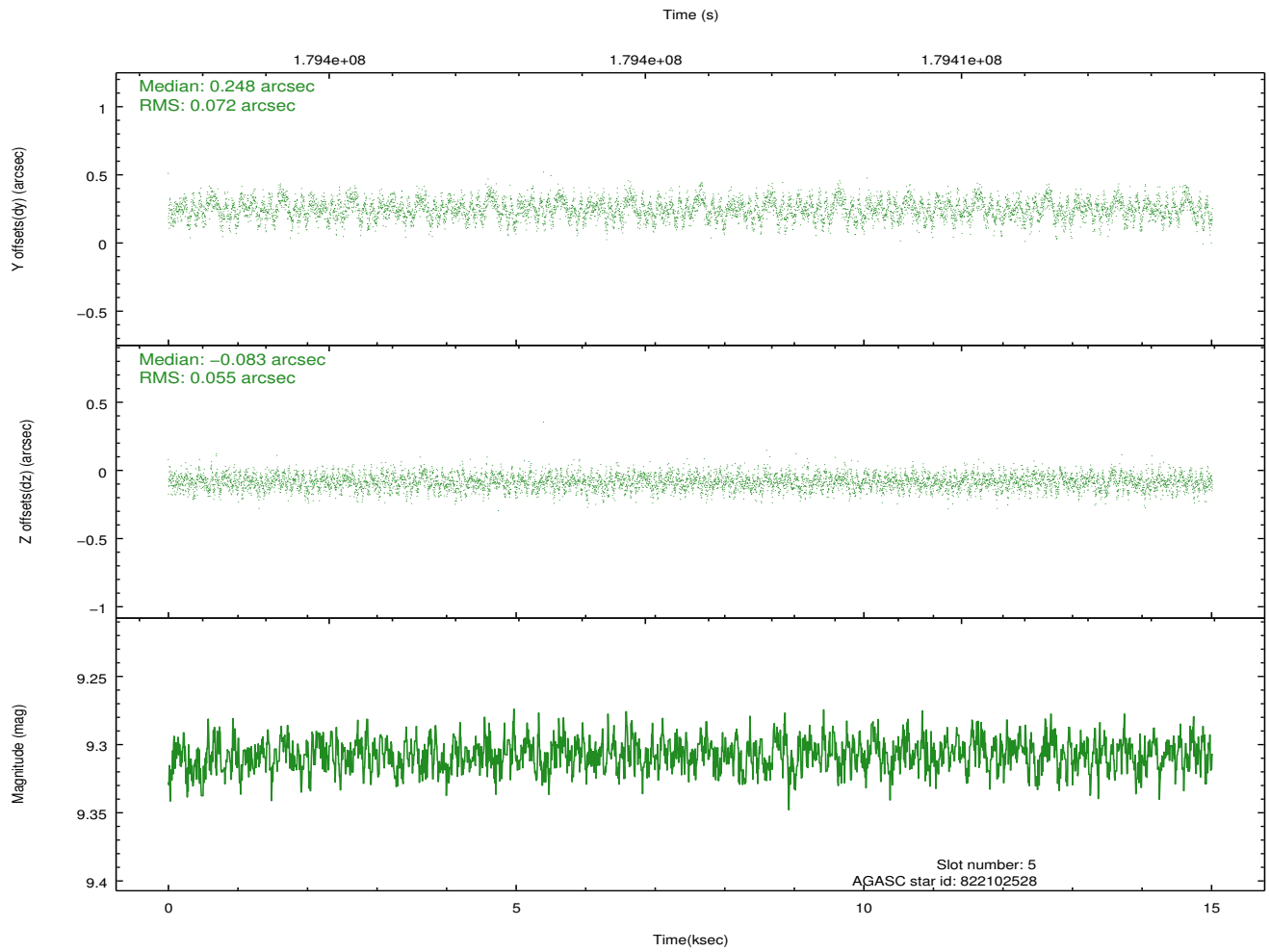
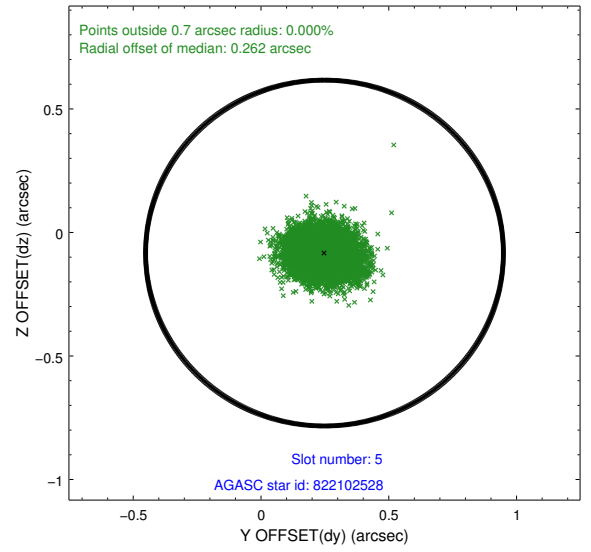
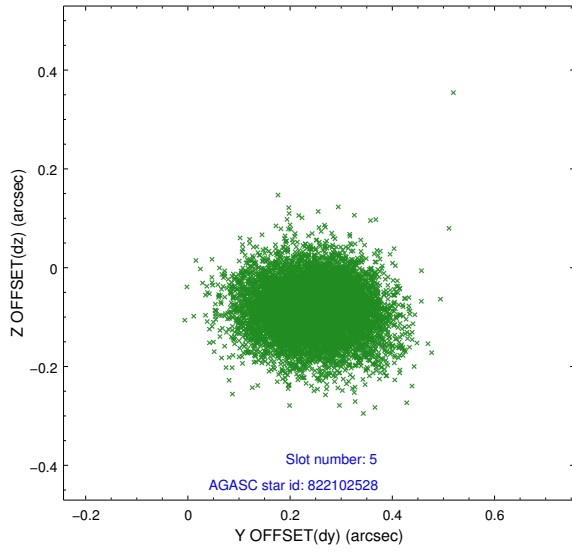
2.4.1 Slot 3



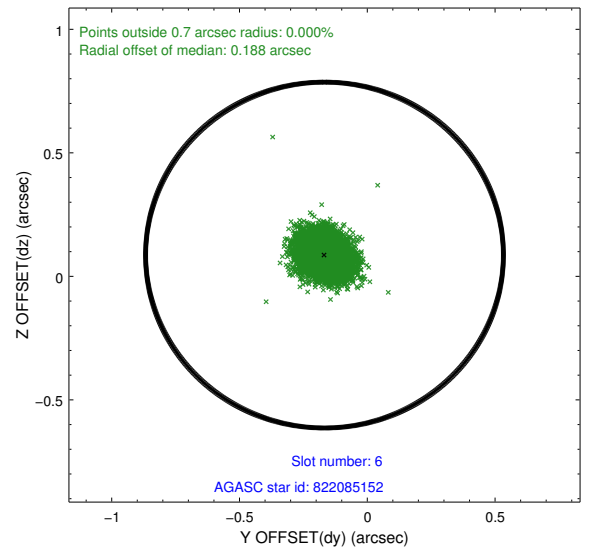
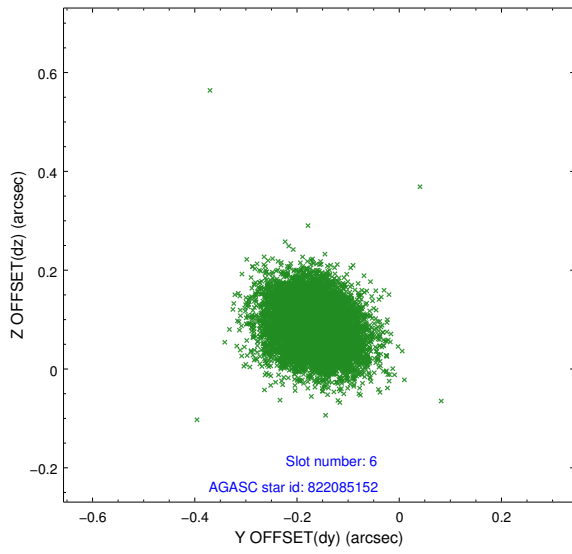
2.4.2 Slot 4



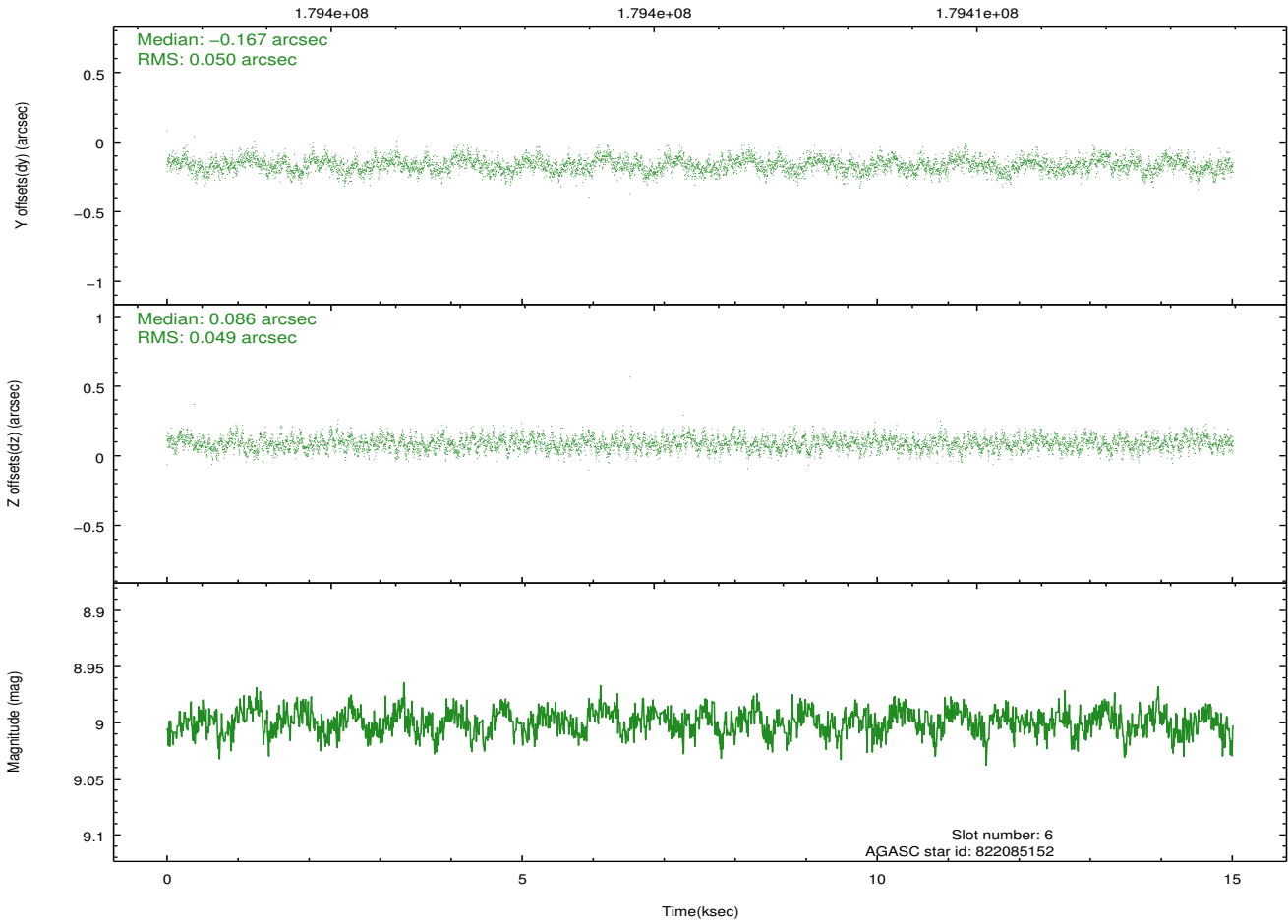
2.4.3 Slot 5



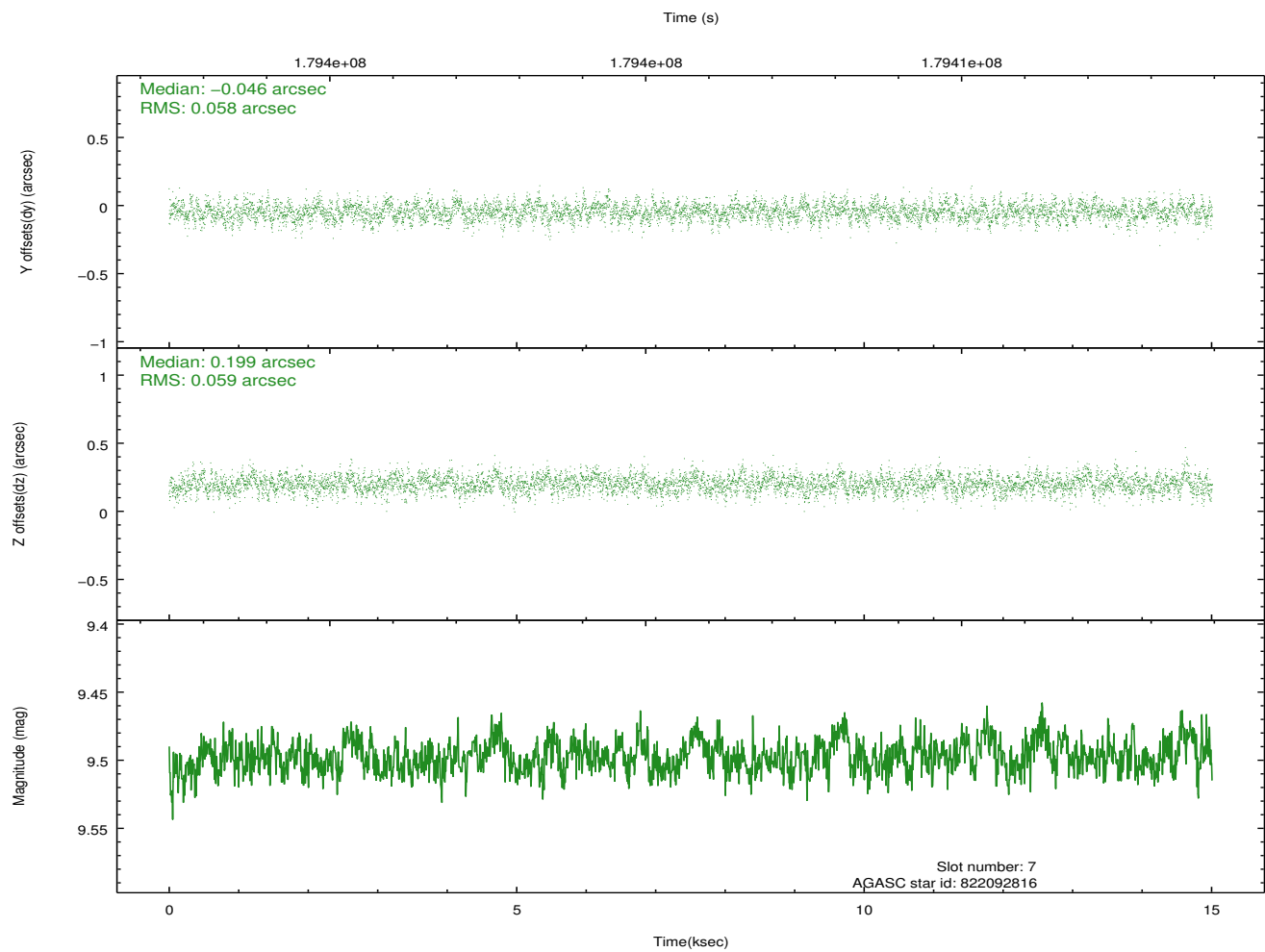
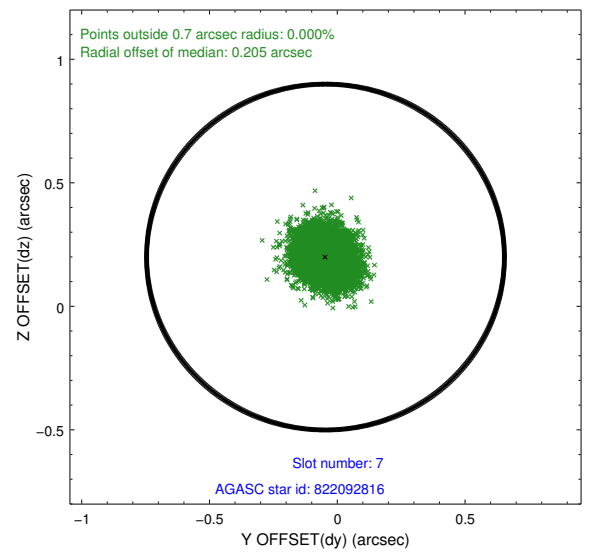
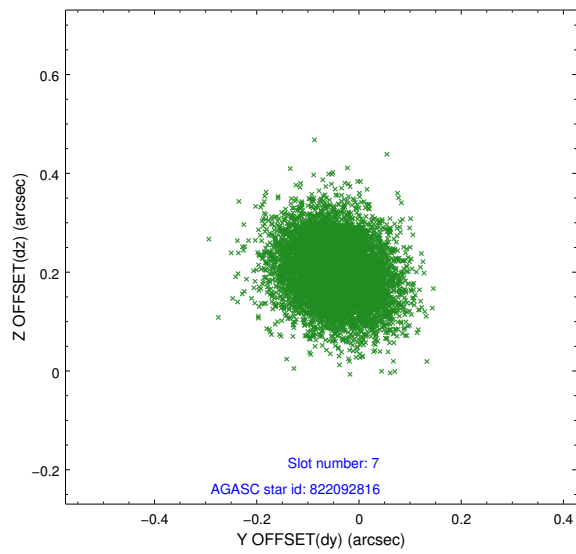
2.4.4 Slot 6



Time (s)

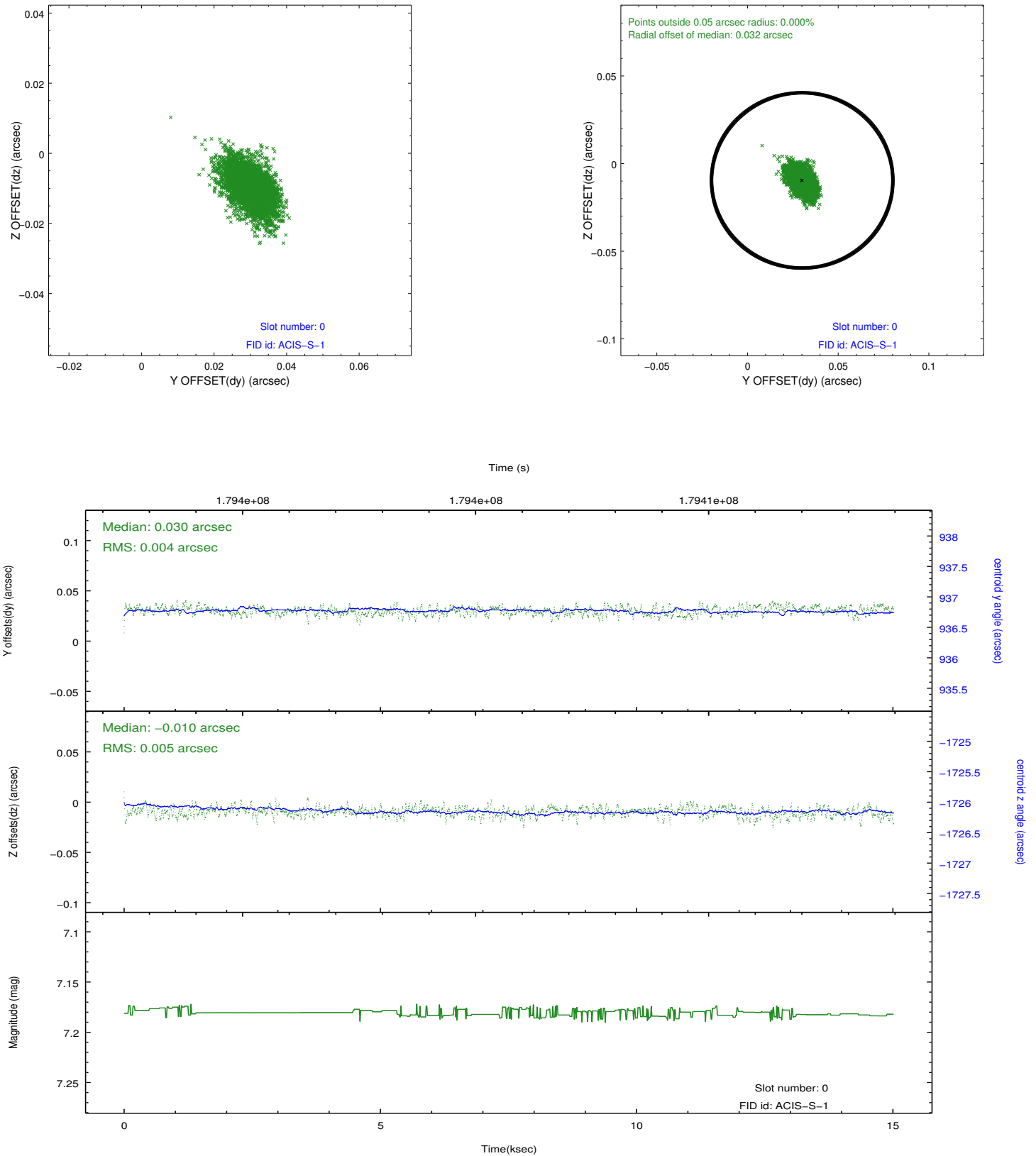


2.4.5 Slot 7

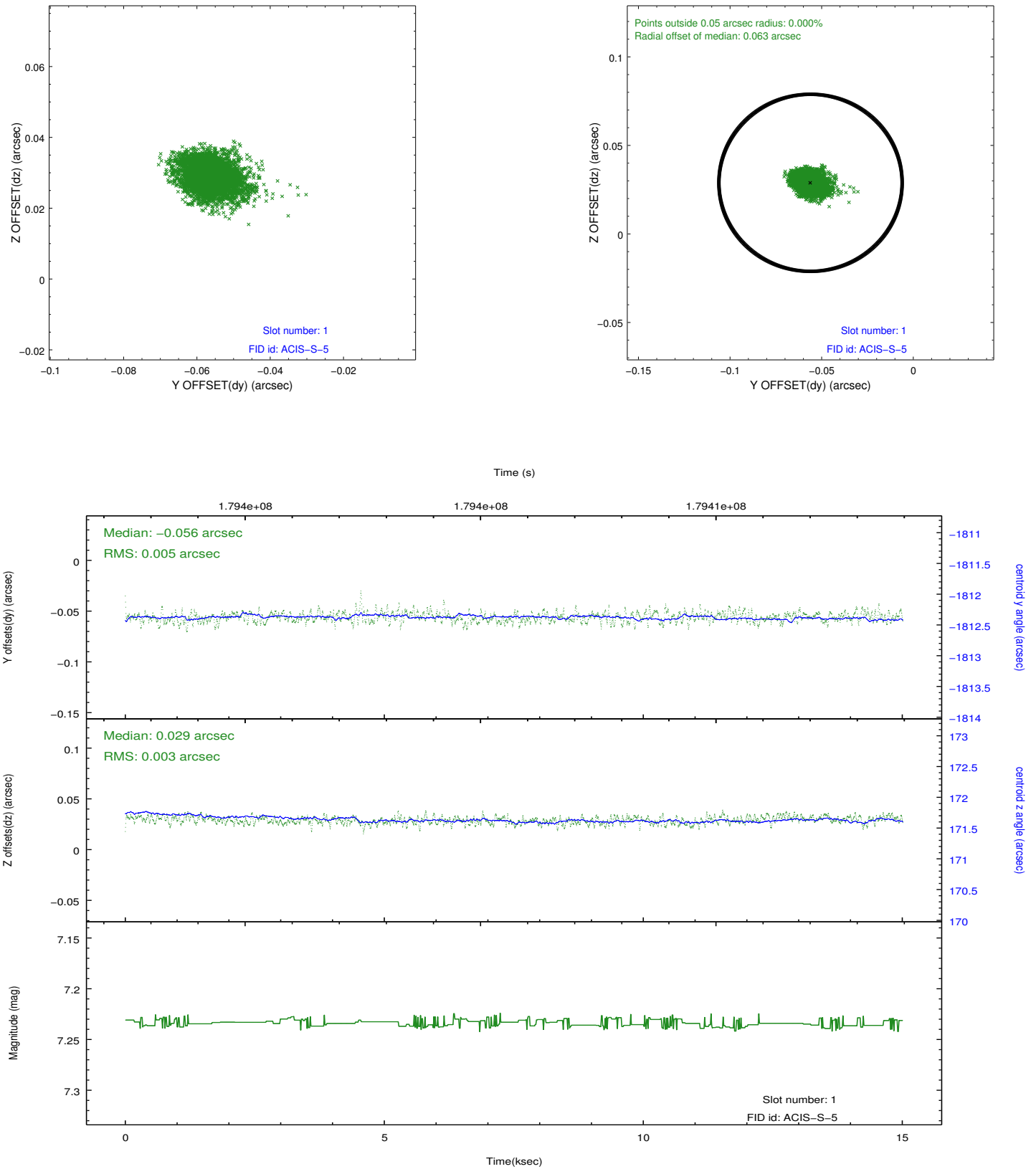


2.5 FID Slots

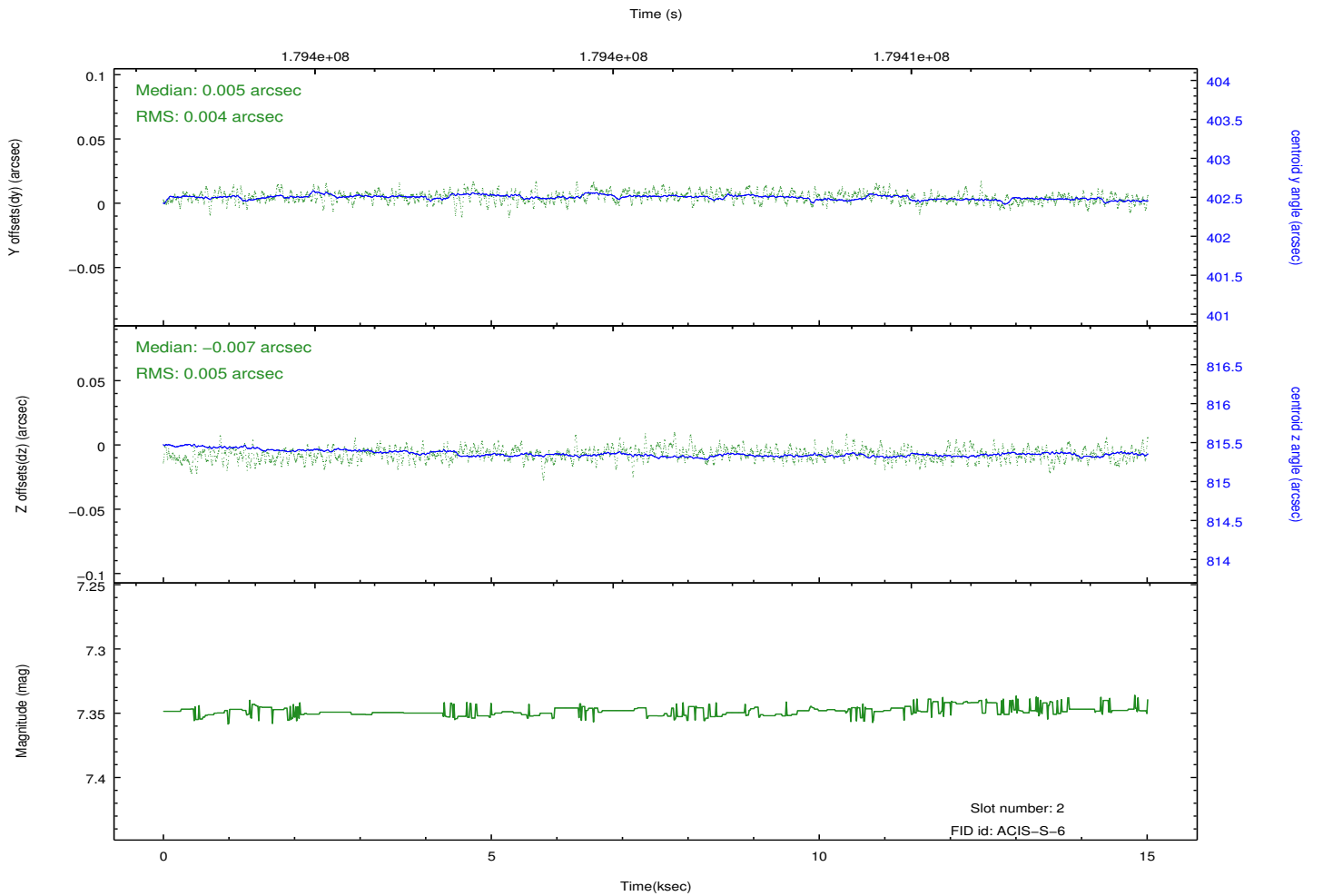
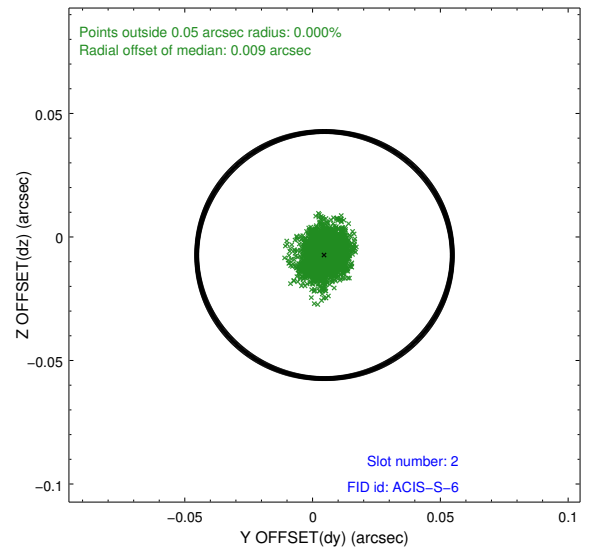
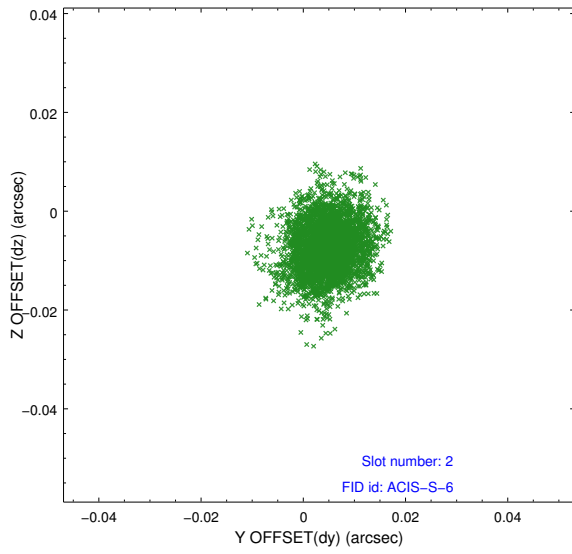
2.5.1 Slot 0



2.5.2 Slot 1



2.5.3 Slot 2



A Summary

A.1 Status

V&V Scientist	Jen Lauer
V&V Date (YYYY-MM-DD)	2012.11.29
V&V Edition	1
V&V Disposition and Status	OK
V&V Charge Time	14.863

A.2 Comments