

V&V Reference Report

L2 ASCDS Version : 8.4.5

Observation 3932 - L2 Version 3
Chandra X-Ray Center

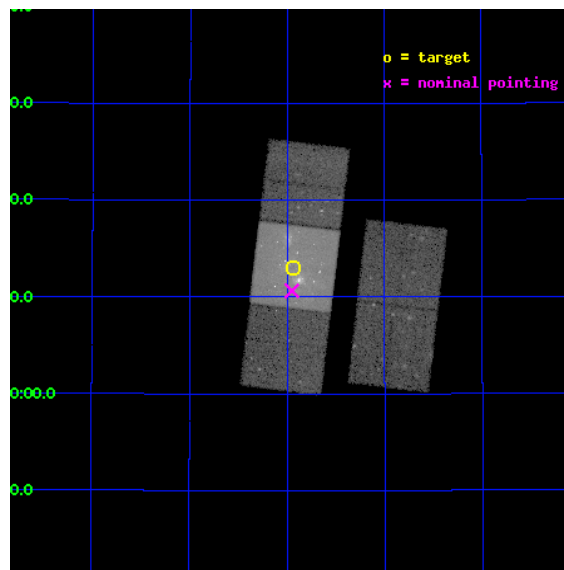
L2 Processing Date : Nov 3 2012

Contents

1	Front	2
2	OBI	3
2.1	OBI	3
2.1.1	Images	3
2.1.2	Bias	3
2.1.3	Parameters	4
2.1.4	Events	4
2.2	Compared Parameters	5
2.3	Aspect	6
2.4	Star Slots	9
2.4.1	Slot 3	9
2.4.2	Slot 4	10
2.4.3	Slot 5	11
2.4.4	Slot 6	12
2.4.5	Slot 7	13
2.5	FID Slots	14
2.5.1	Slot 0	14
2.5.2	Slot 1	15
2.5.3	Slot 2	16
A	Summary	17
A.1	Status	17
A.2	Comments	17

1 Front

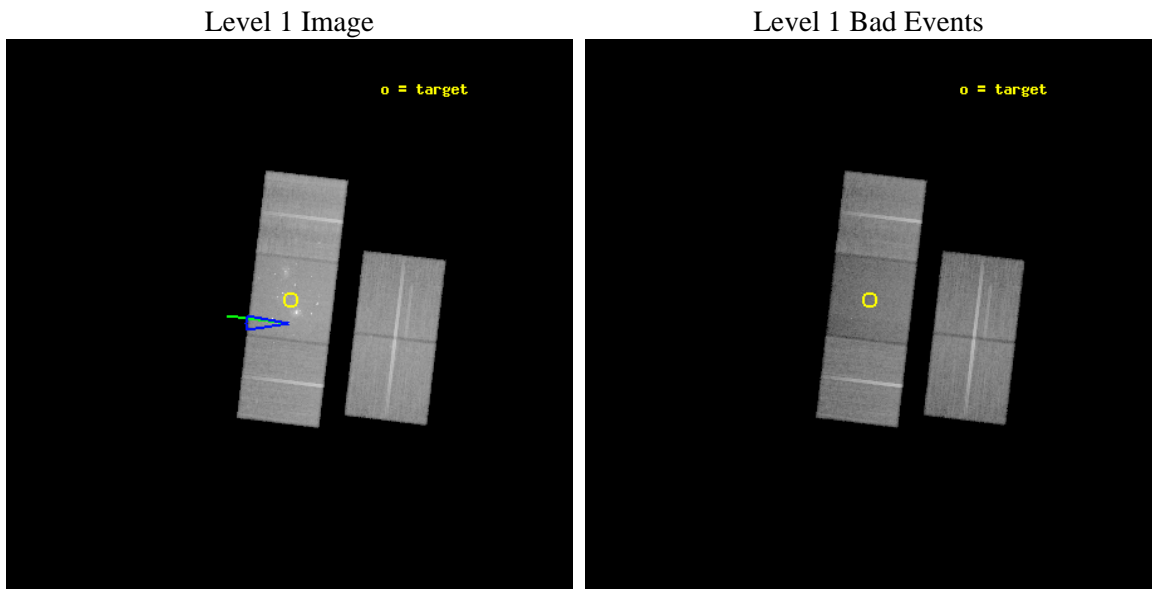
seq_num	600306	Sequence number
obs_id	3932	Observation id
title	THE NATURE OF ULTRALUMINOUS X-RAY SOURCE POPULATION IN M51	Proposa
observer	Dr. Yuichi Terashima	Principal investigator
object	M51	Source name
dtcycle	0	
cycle	P	events from which exps? Prim/Second/Both
ra_targ	202.483333	Observer's specified target RA [deg]
dec_targ	47.216667	Observer's specified target Dec [deg]
ra_nom	202.487524731	Nominal RA [deg]
dec_nom	47.177499710213	Nominal Dec [deg]
roll_nom	276.75368476163	Nominal Roll [deg]
revision	3	Processing version of data
ontime	48604.899906516	Sum of GTIs [s]
livetime	47969.841106831	Livetime [s]
ontime2	48598.617976069	Sum of GTIs [s]
ontime3	48595.476946026	Sum of GTIs [s]
ontime6	48604.899906516	Sum of GTIs [s]
ontime7	48604.899906516	Sum of GTIs [s]
ontime8	48604.899906516	Sum of GTIs [s]
l2events	264372	Number of level 2 events



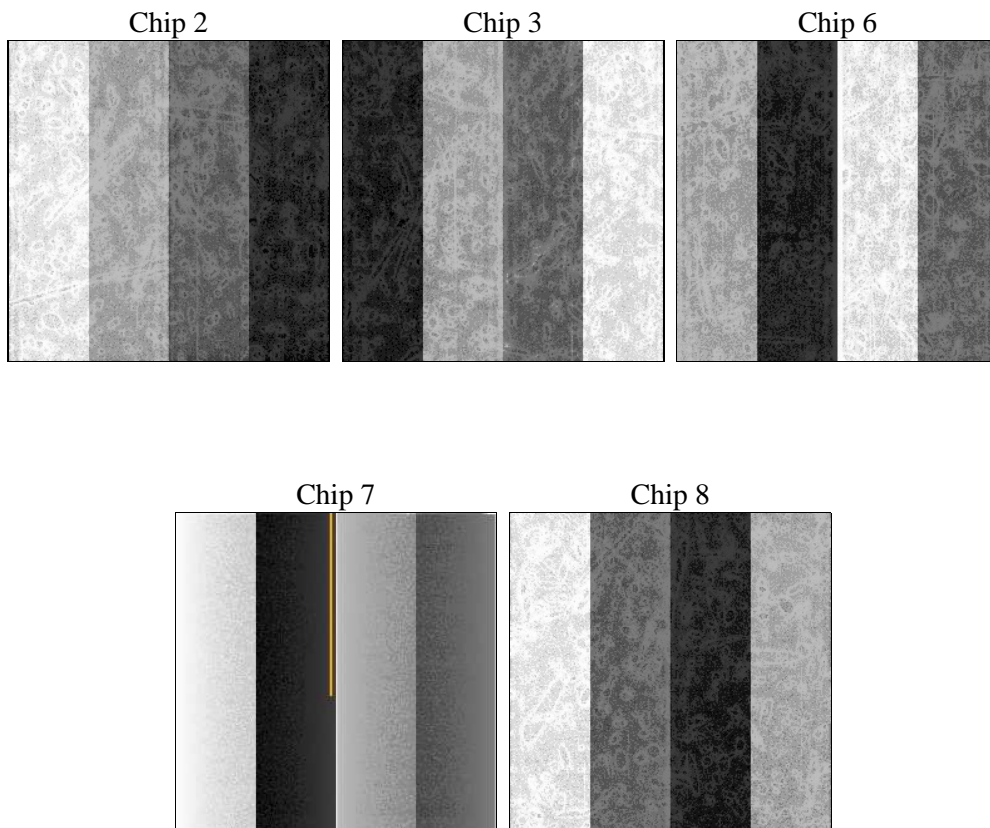
2 OBI

2.1 OBI

2.1.1 Images



2.1.2 Bias



2.1.3 Parameters

obi_num	0	Obi number	sched_exp_time	48500.000000	[s] Scheduled observation exposure time
ascdsver	8.4.5	Processing system revision	ontime	48604.899906516	Sum of GTIs [s]
caldbver	4.5.2	 	ontime2	48598.617976069	Sum of GTIs [s]
date	2012-11-03T17:01:03	Date and time of file creation	ontime3	48595.476946026	Sum of GTIs [s]
revision	3	Processing version of data	ontime6	48604.899906516	Sum of GTIs [s]
			ontime7	48604.899906516	Sum of GTIs [s]
			ontime8	48604.899906516	Sum of GTIs [s]
			l1events	1420510	Number of level 1 events

2.1.4 Events

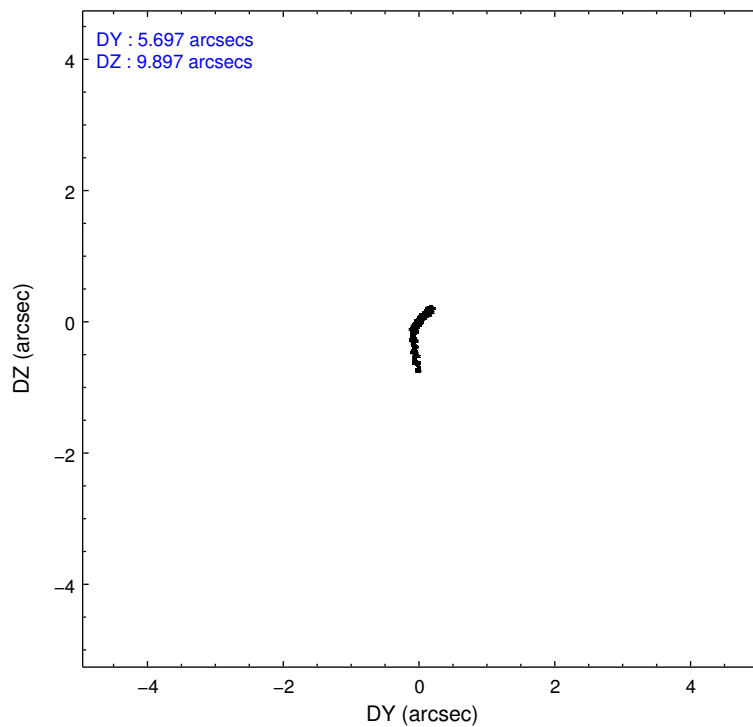
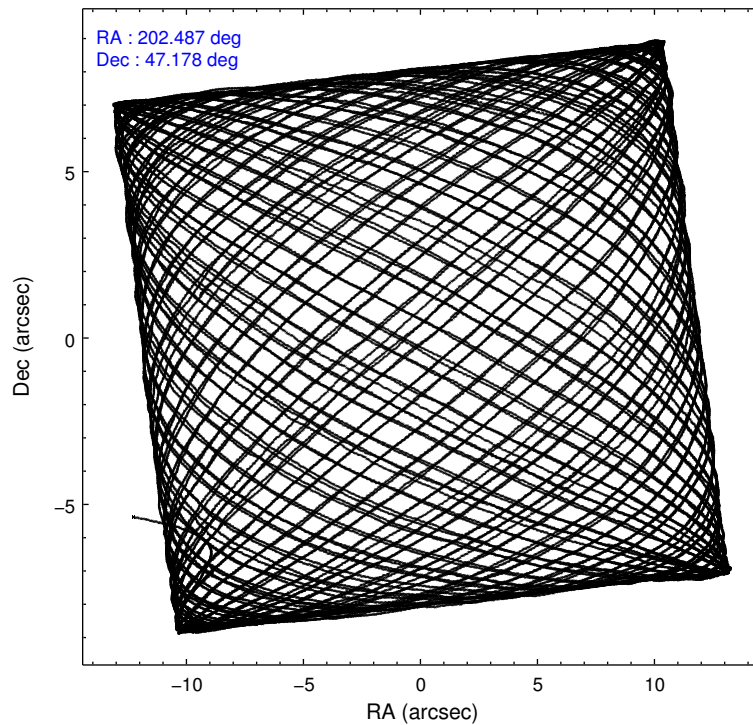
	ccd 2	ccd 3	ccd 6	ccd 7	ccd 8
level 1 events	261874	249536	259688	327456	321956
rejected events	235822	225340	232017	153755	248731
rejected %	90%	90%	89%	46%	77%

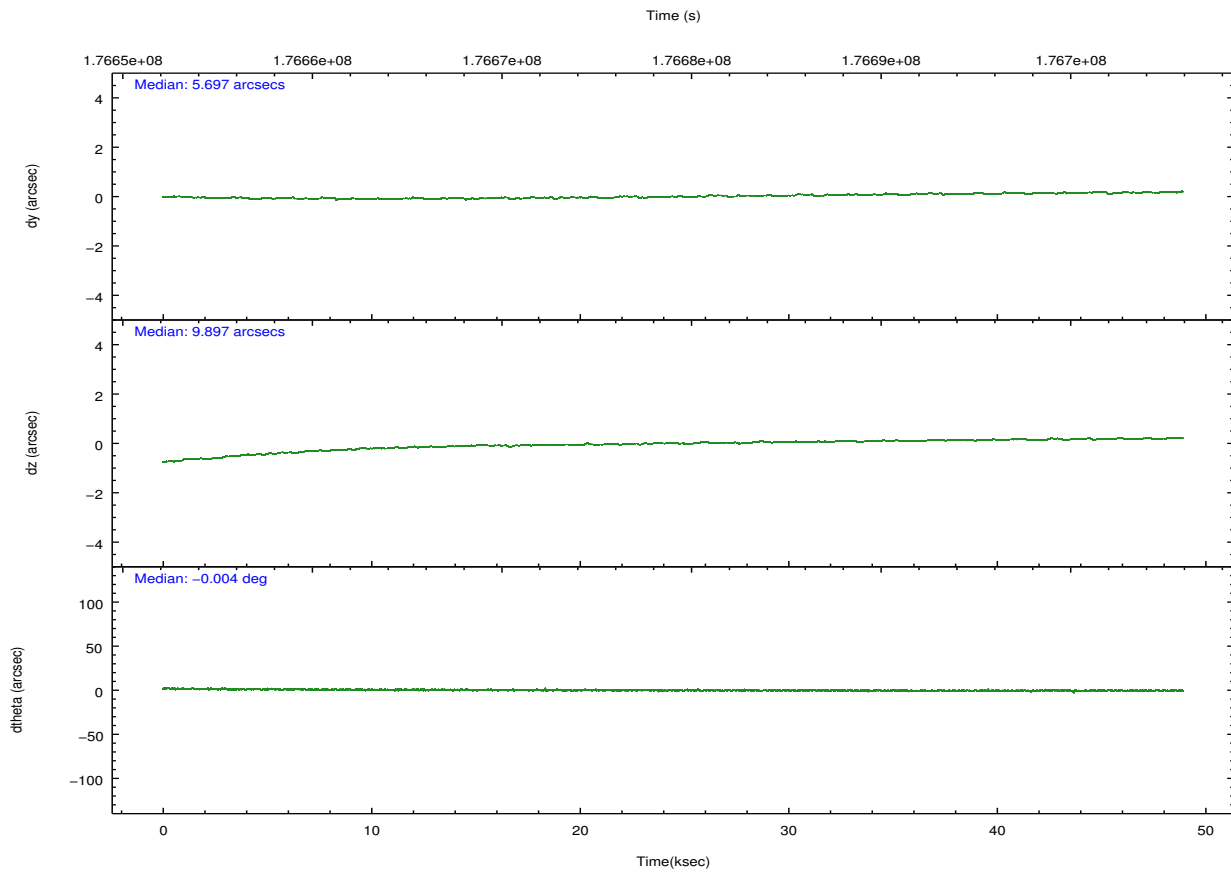
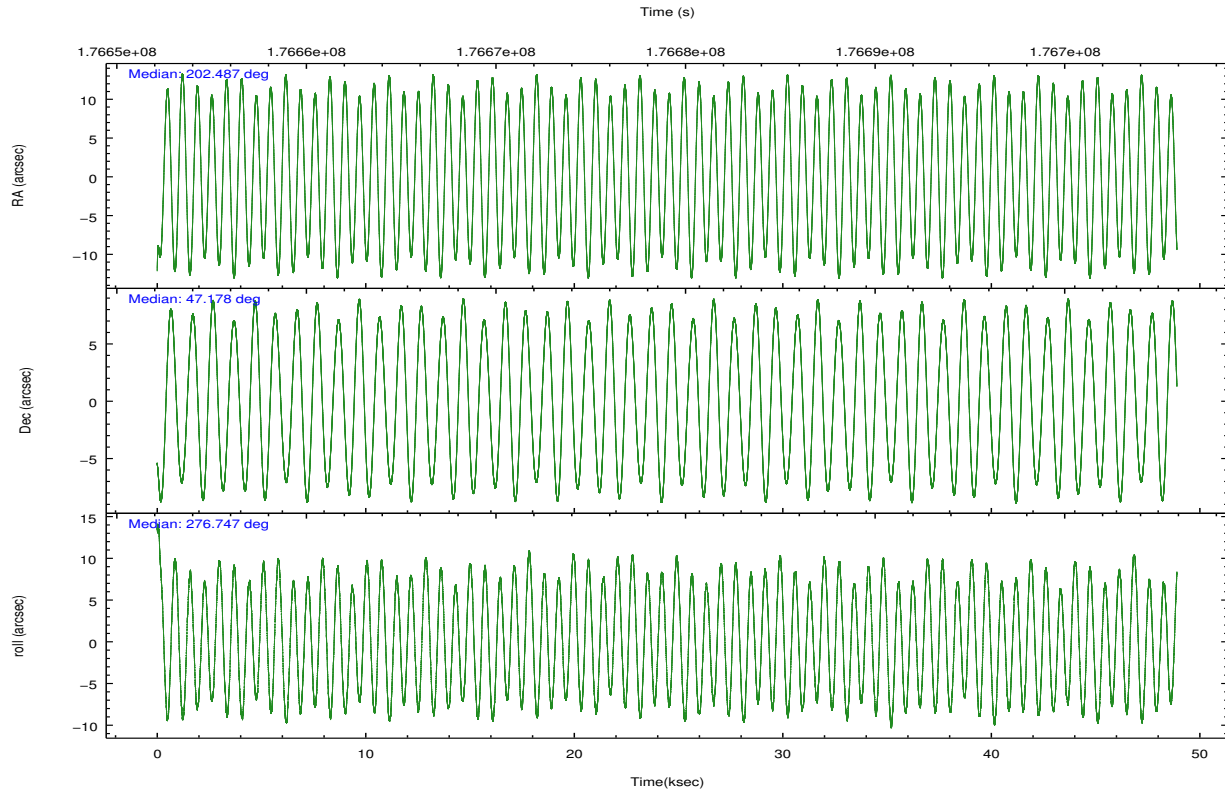
	ccd 2	ccd 3	ccd 6	ccd 7	ccd 8
grade 0 events	10131	8813	10100	27477	23697
	3%	3%	3%	8%	7%
grade 1 events	142	106	107	262	197
	0%	0%	0%	0%	0%
grade 2 events	5665	5124	5856	36630	15660
	2%	2%	2%	11%	4%
grade 3 events	2844	2867	3063	17304	7956
	1%	1%	1%	5%	2%
grade 4 events	2867	2795	2978	16985	7492
	1%	1%	1%	5%	2%
grade 5 events	8094	9834	10082	30218	14387
	3%	3%	3%	9%	4%
grade 6 events	4550	4600	5677	75312	18428
	1%	1%	2%	22%	5%
grade 7 events	227581	215397	221825	123268	234139
	86%	86%	85%	37%	72%

2.2 Compared Parameters

Parameter	Planned	Actual	Parameter	Planned	Actual
Instrument	ACIS	ACIS	Obspar format version number	7	7
Detector	ACIS-23678	ACIS-23678	Obspar file type	PREDICTED	ACTUAL
Grating	NONE	NONE	Obspar update status	NONE	UPDATED
Data mode	VFAINT	VFAINT	Number of optional ACIS chips dropped	0	0
Observation mode	POINTING	POINTING	On-chip summing requested	N	N
[deg] Pointing RA	202.463113	202.4875247310033	Subarray requested	NONE	NONE
[deg] Pointing Dec	47.199100	47.17749971021303	Alternating exposures requested	N	N
[deg] Pointing Roll	276.614976	276.7536847616309	[s] Primary exposure time	0.000000	3.1
[deg] Roll angle	270.000000	270.000000			
[deg] Roll tolerance	10.000000	10.000000			
Roll constraint allows 180D rotation	N	N			
[mm] SIM focus pos	-0.684267	-0.6828225247311905			
[mm] SIM defocus	0	0.001444936568705701			
[mm] SIM translation stage pos	-190.132523	-190.1400660498719			
[mm] SIM translation stage offset	0	0.00754346686406393			
[s] Observation start time (MET)	176654976.184000	176653904.76535			
Observation start date	2003-08-07T14:48:32	2003-08-07T14:31:44			
[s] Observation end time (MET)	176703476.184000	176704117.97999			
Observation end date	2003-08-08T04:16:52	2003-08-08T04:28:37			
Read mode	TIMED	TIMED			

2.3 Aspect



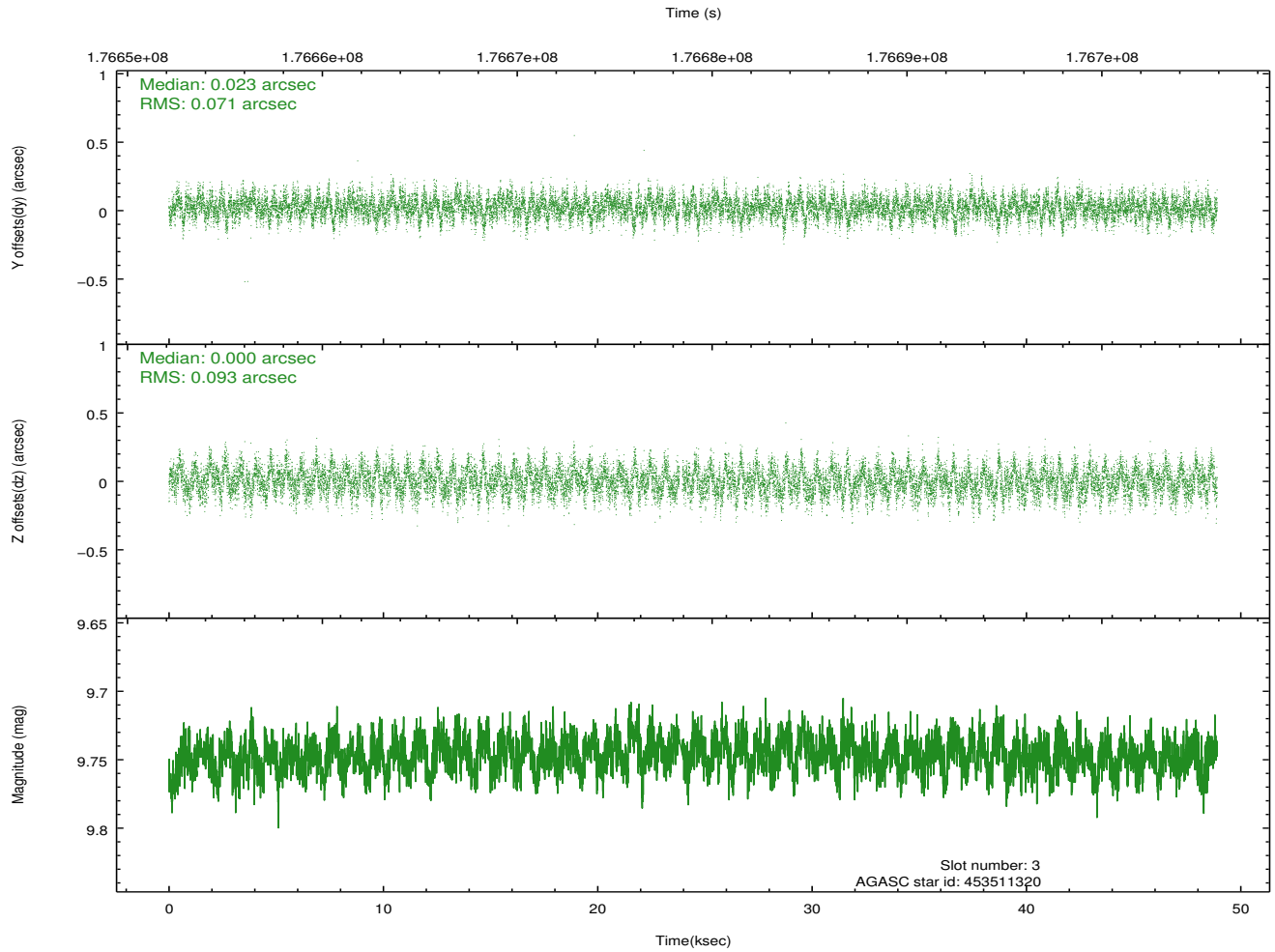
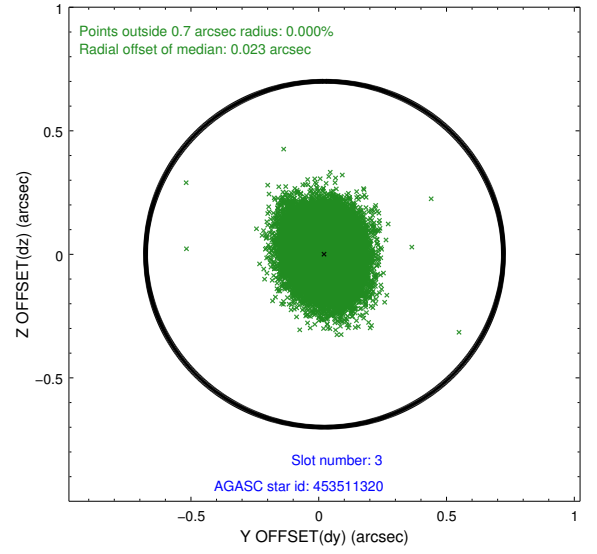
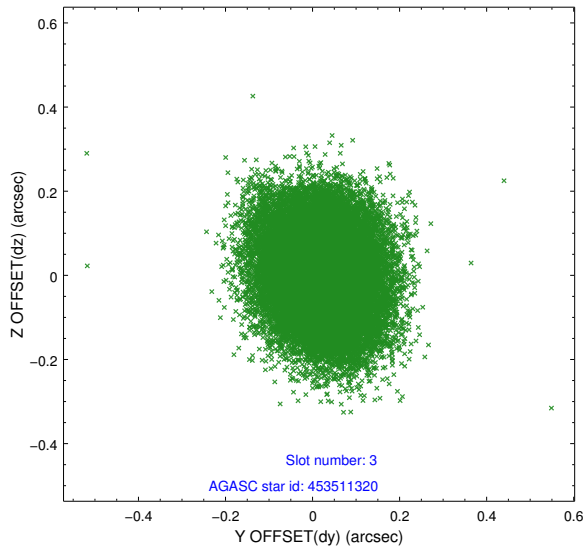


Slot Statistics

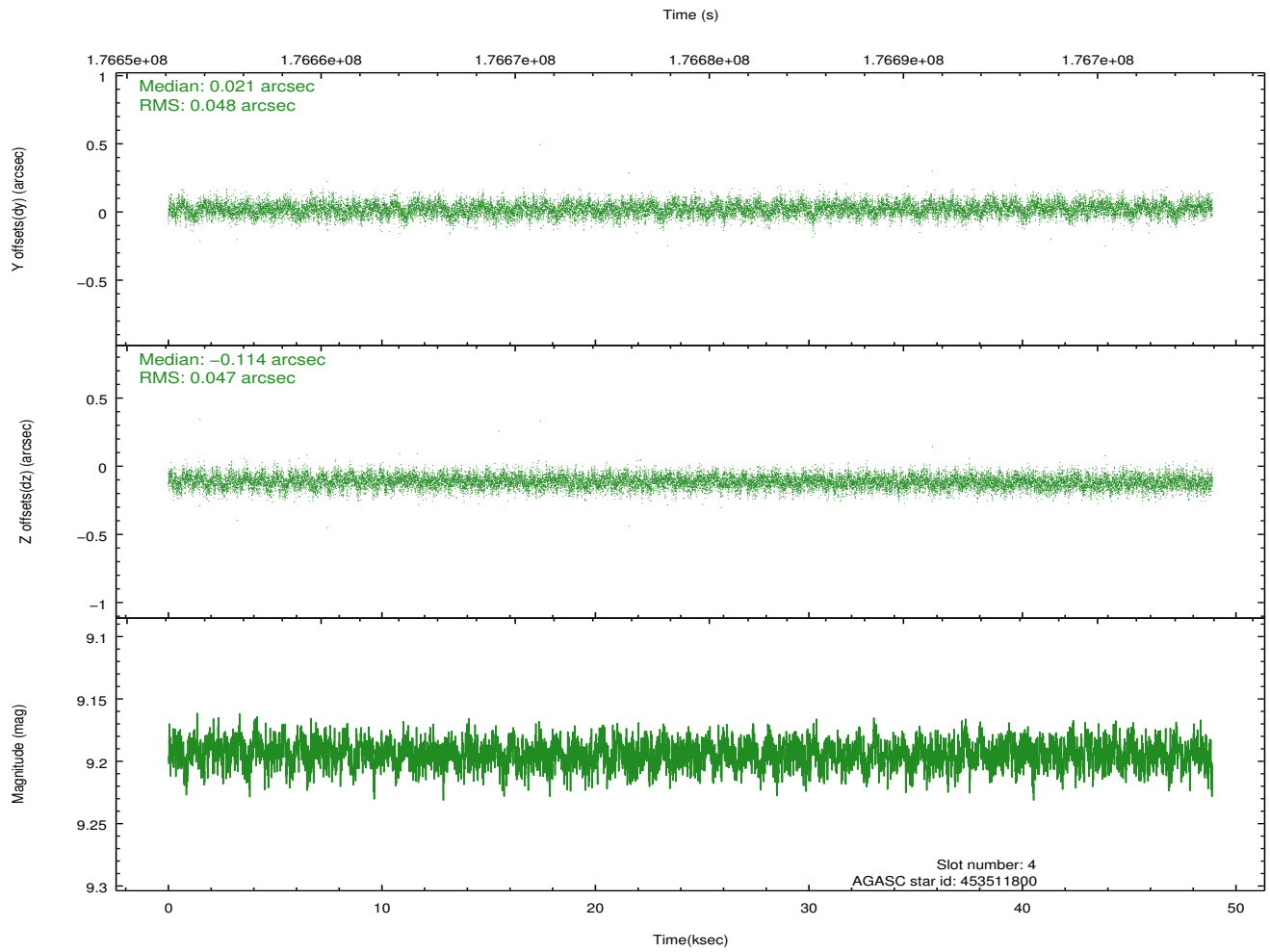
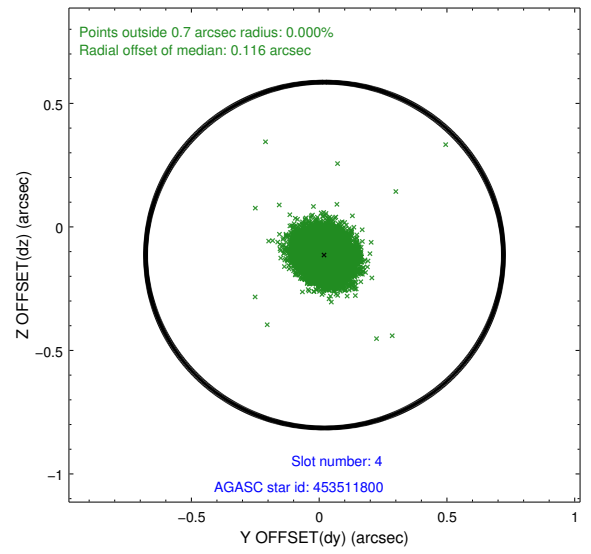
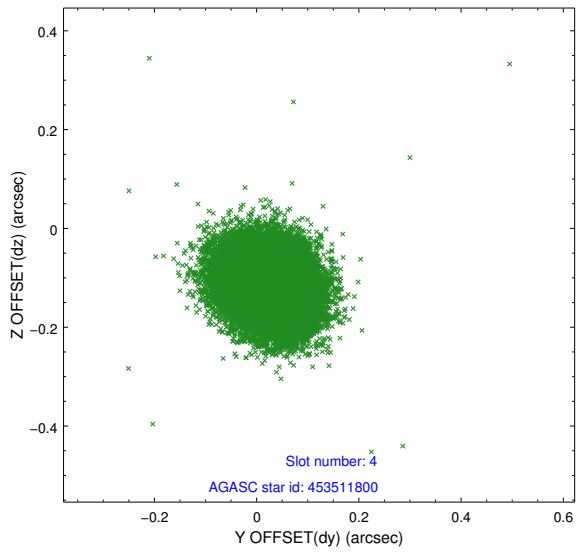
slot	status	id	mag	n_pts	med_dy	med_dz	dr1	dr2	ra	dec	mean_y	mean_z
0	FID	ACIS-S-2	7.10	11928	-0.081	-0.058	0.006	0.011	0.000000	0.000000	-758.51	-1731.14
1	FID	ACIS-S-4	7.20	11928	0.055	0.048	0.007	0.011	0.000000	0.000000	2154.91	177.47
2	FID	ACIS-S-6	7.34	11928	-0.002	0.017	0.008	0.014	0.000000	0.000000	403.53	814.81
3	GUIDE	453511320	9.75	23769	0.023	0.000	0.125	0.202	201.652270	47.423457	-1039.36	-1867.31
4	GUIDE	453511800	9.19	23850	0.021	-0.114	0.071	0.114	201.825327	46.820165	1168.06	-1717.07
5	GUIDE	453904928	8.68	23845	-0.003	0.027	0.060	0.096	203.391671	46.796779	1688.92	2108.45
6	GUIDE	454303184	7.35	23854	-0.084	0.035	0.078	0.118	203.304787	47.758729	-1777.50	2257.06
7	GUIDE	454303504	9.71	23845	0.050	0.054	0.107	0.173	202.757470	47.708424	-1740.40	919.85

2.4 Star Slots

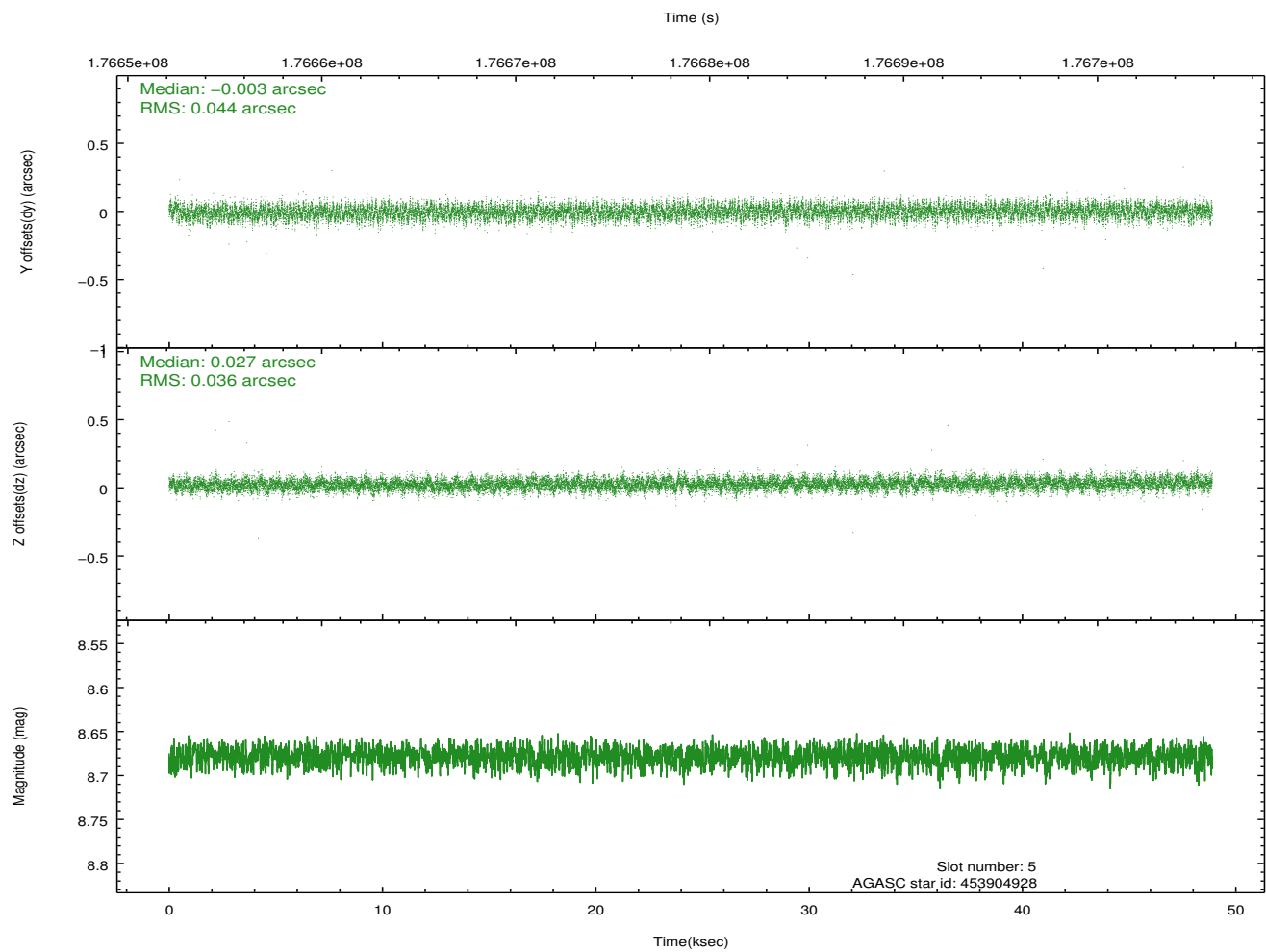
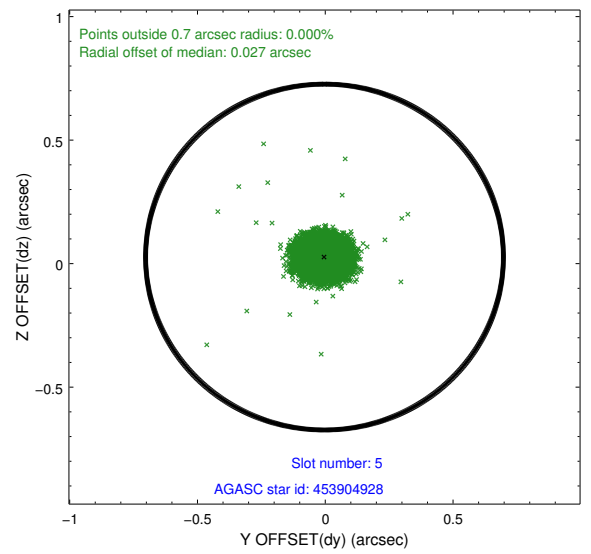
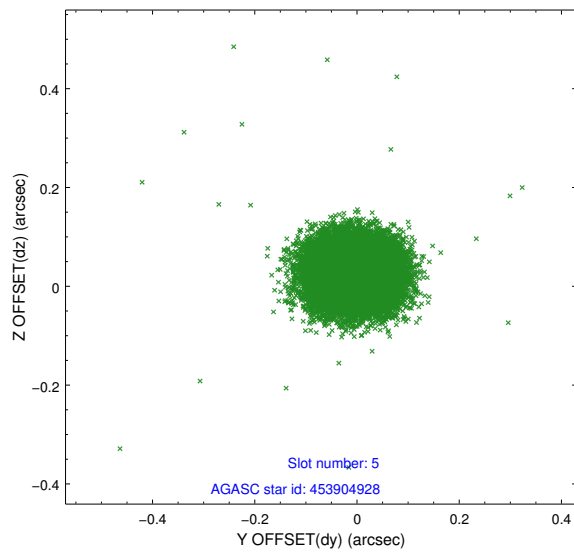
2.4.1 Slot 3



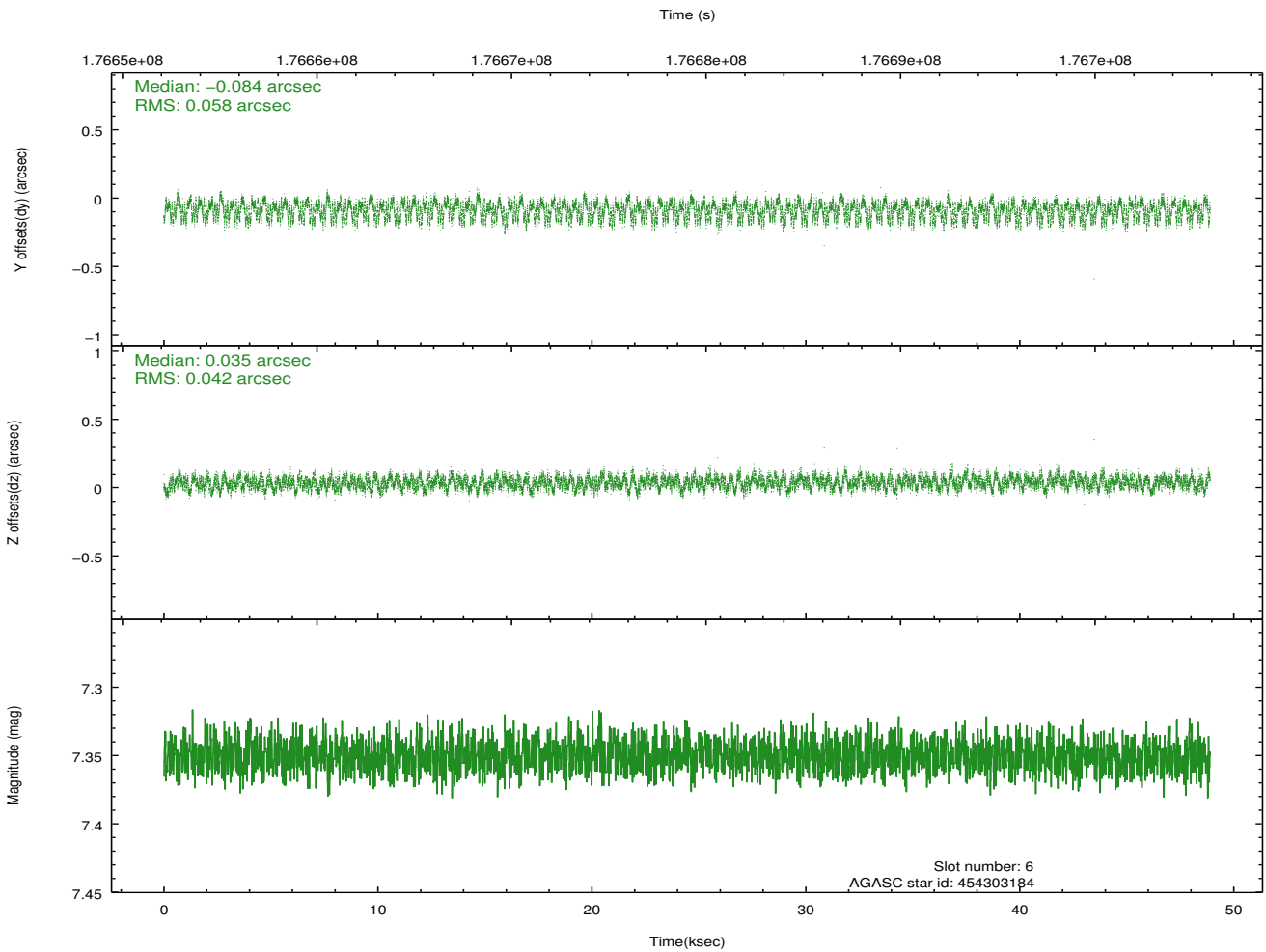
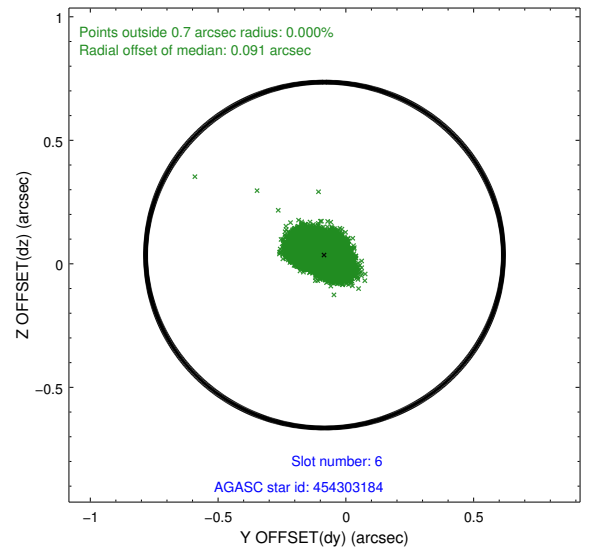
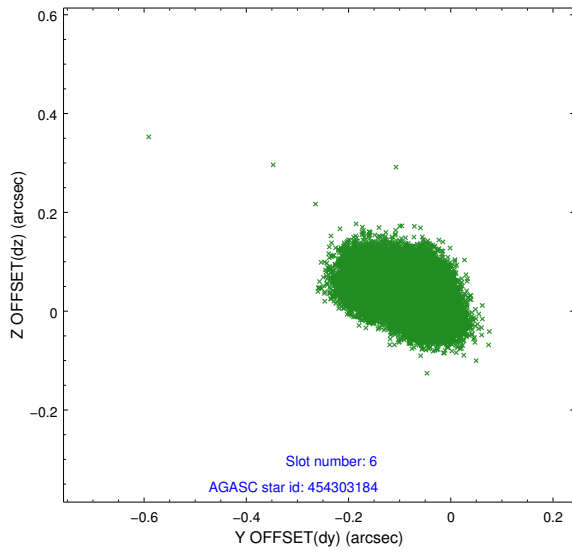
2.4.2 Slot 4



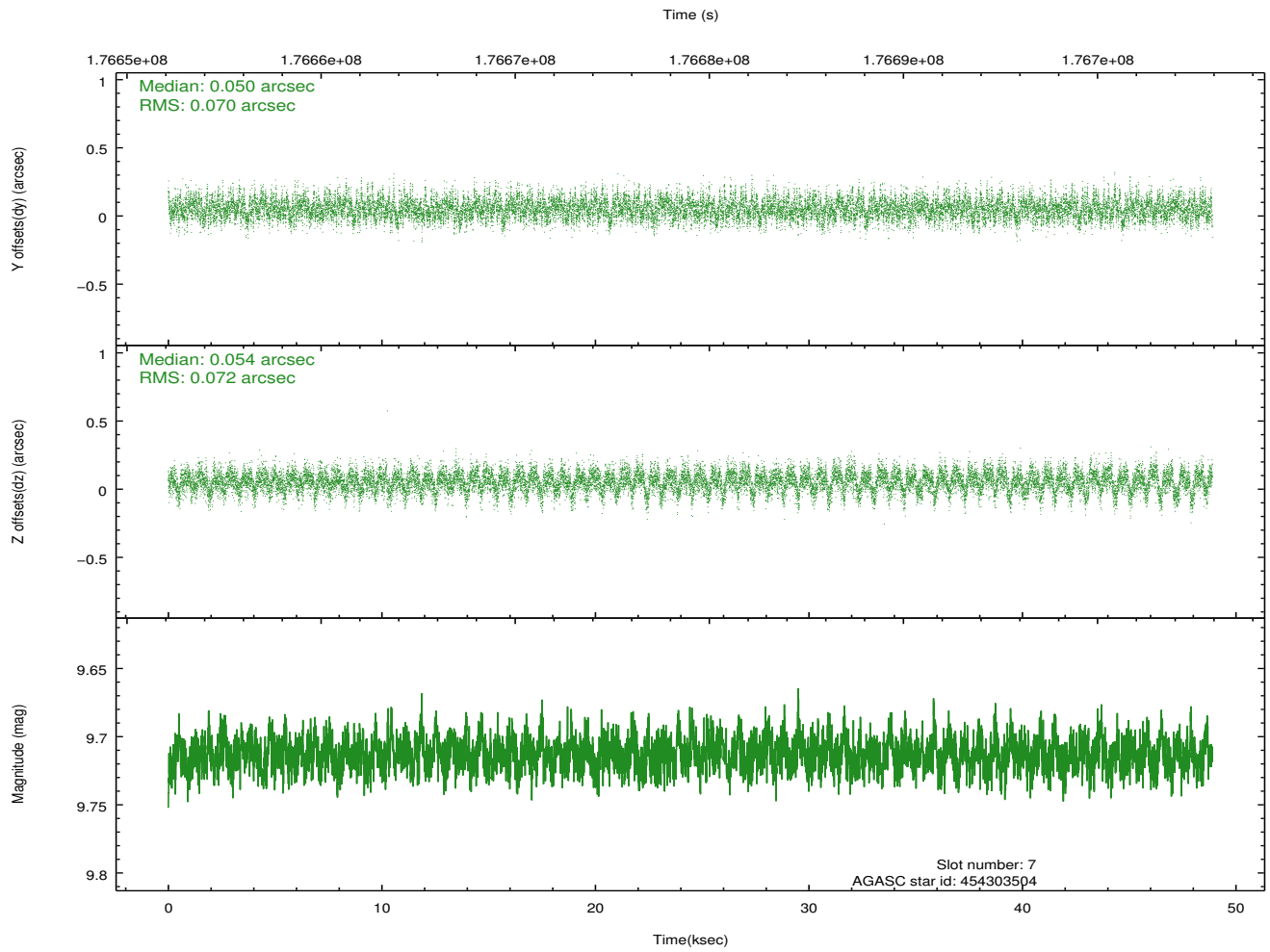
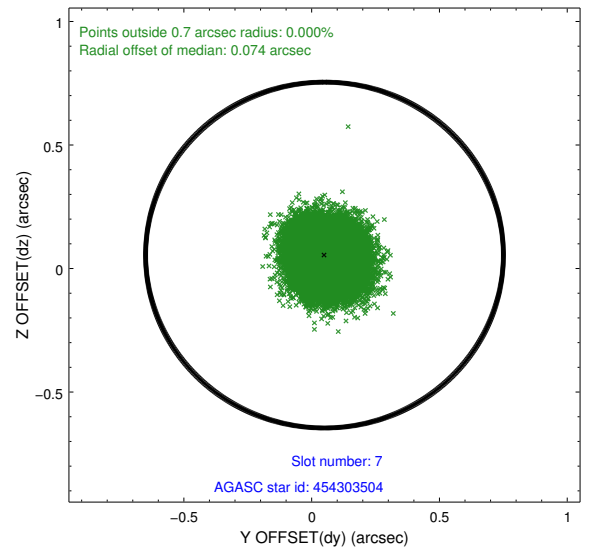
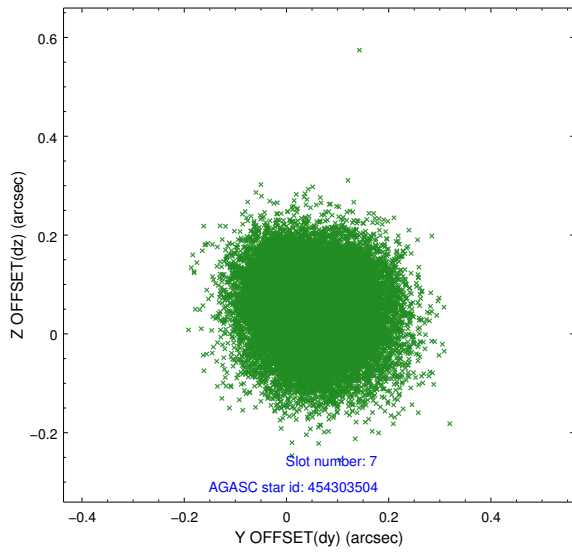
2.4.3 Slot 5



2.4.4 Slot 6

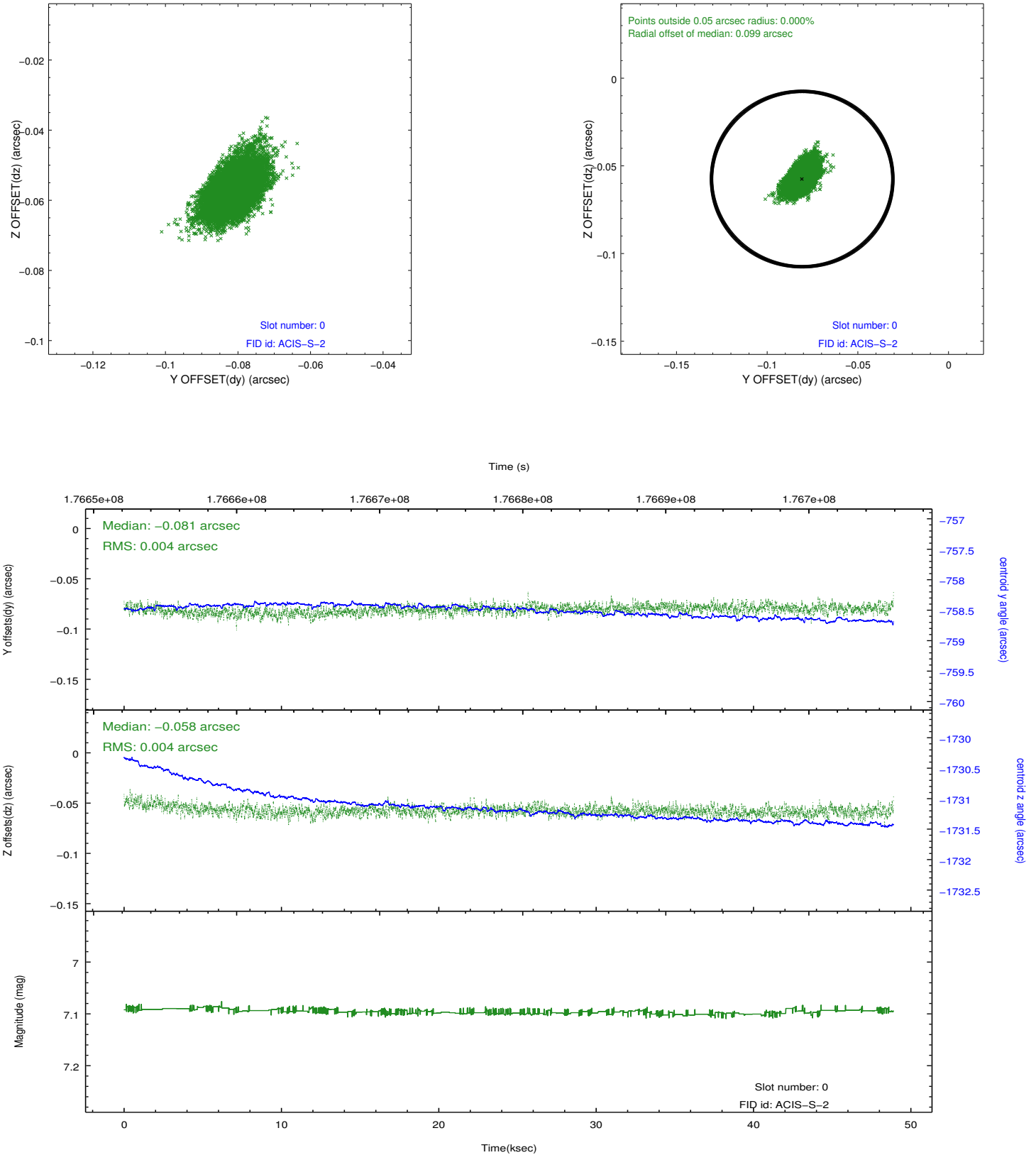


2.4.5 Slot 7

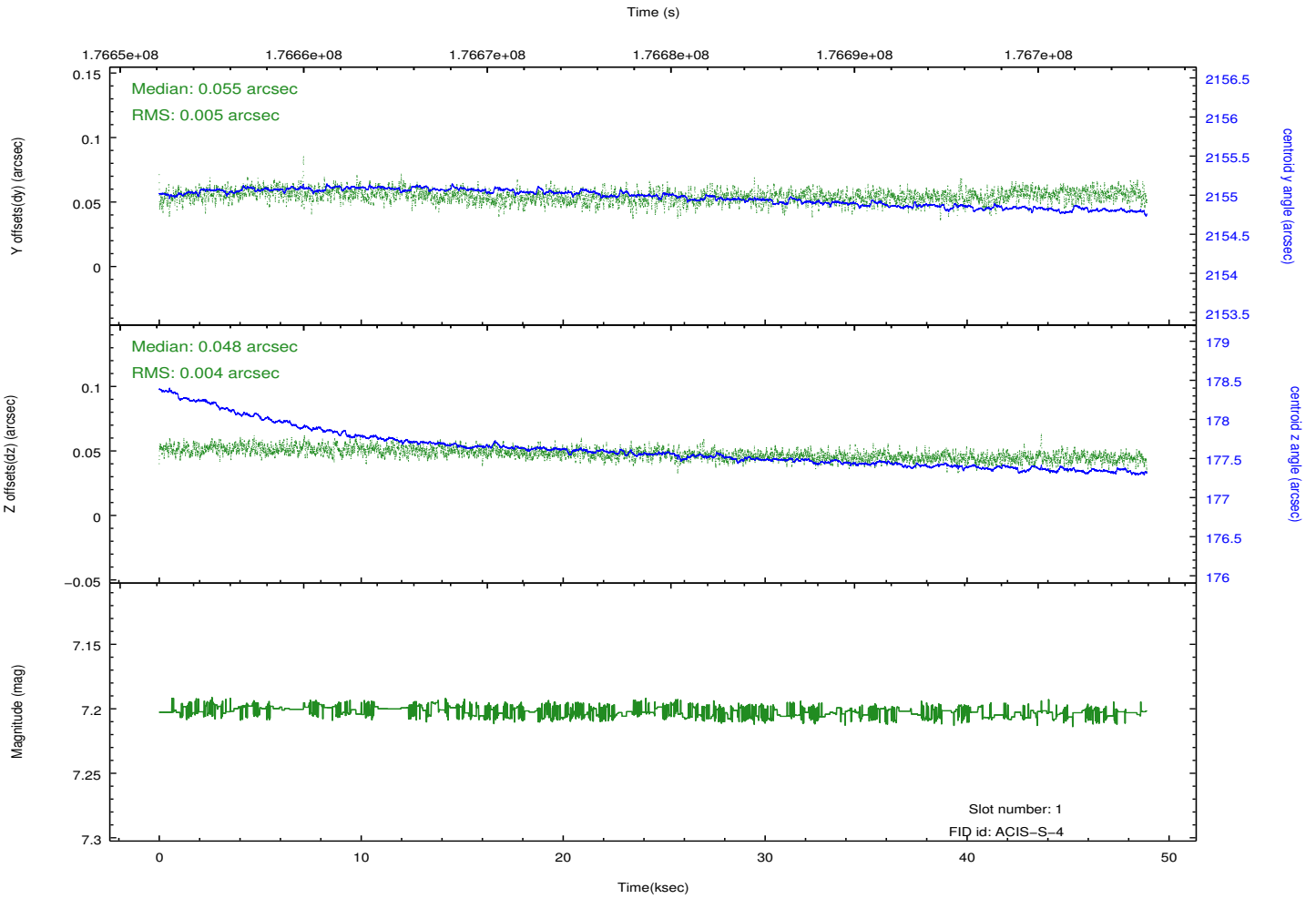
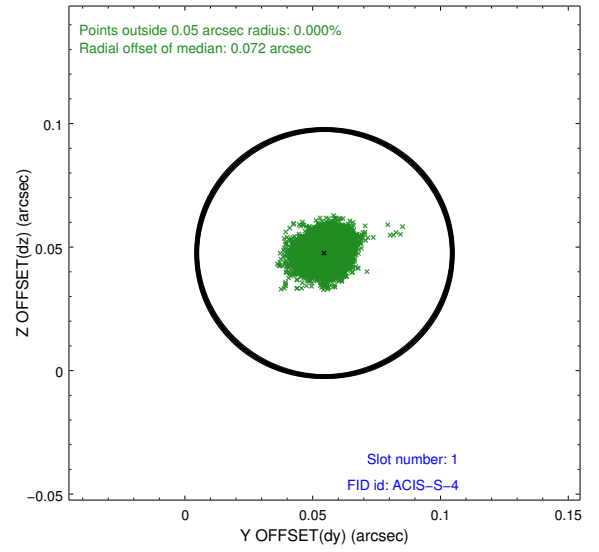
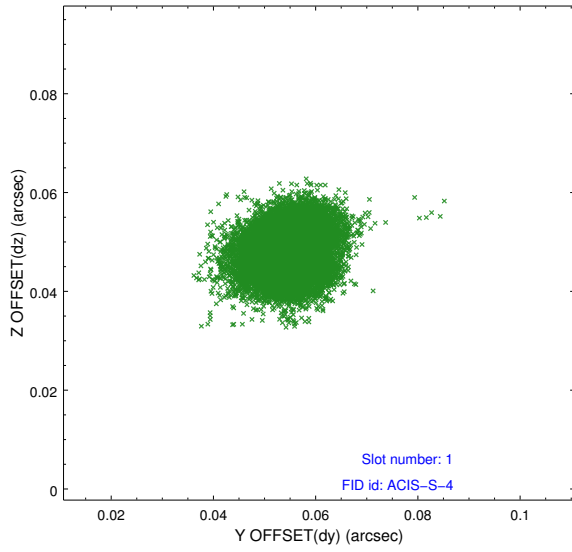


2.5 FID Slots

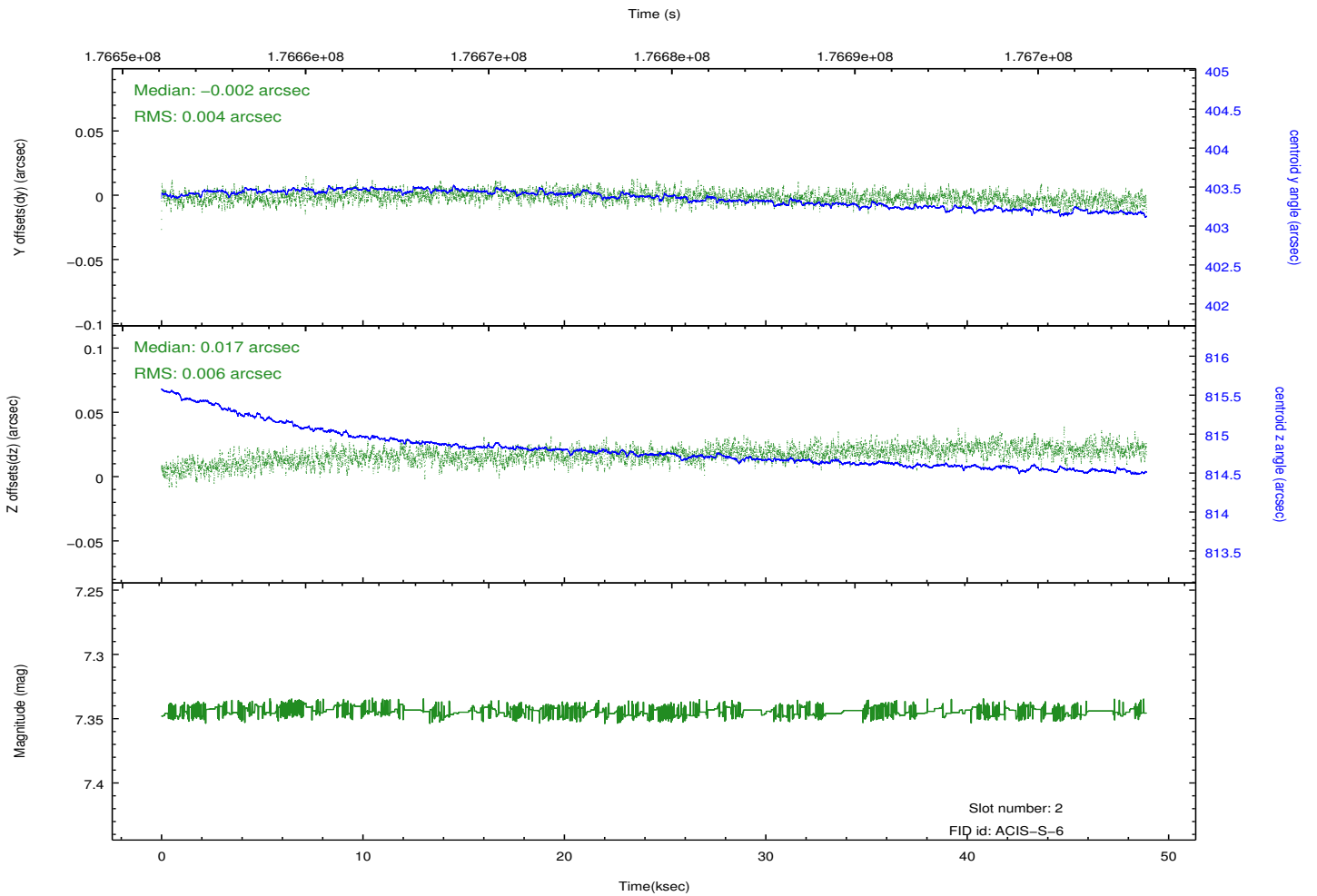
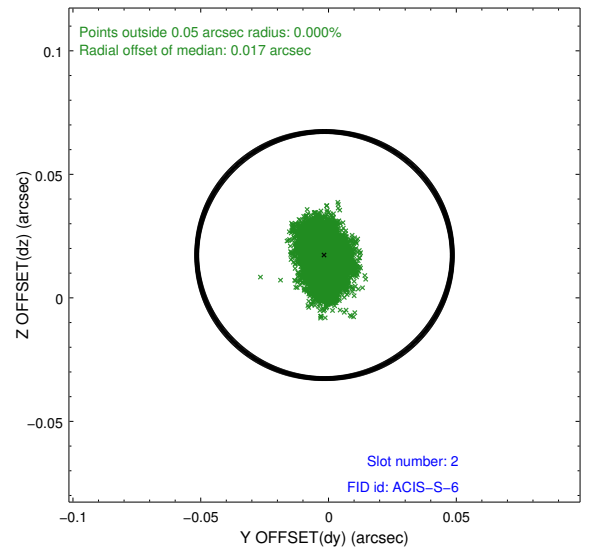
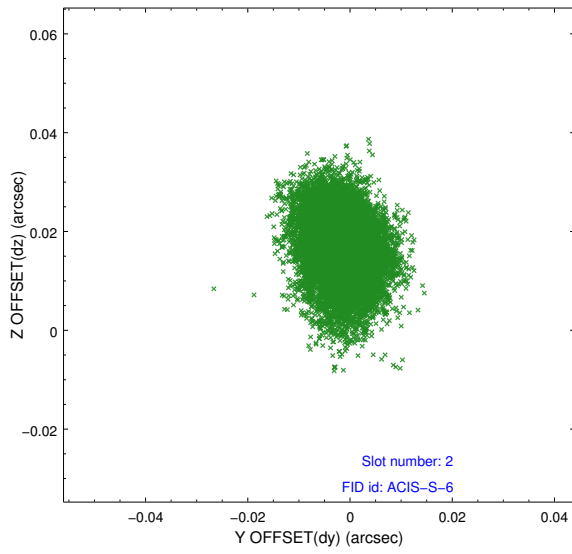
2.5.1 Slot 0



2.5.2 Slot 1



2.5.3 Slot 2



A Summary

A.1 Status

V&V Scientist	Jen Lauer
V&V Date (YYYY-MM-DD)	2012.11.29
V&V Edition	1
V&V Disposition and Status	OK
V&V Charge Time	48.607

A.2 Comments

Roll constraint met.