

V&V Reference Report

L2 ASCDS Version : 8.4.5

Observation 3952 - L2 Version 3
Chandra X-Ray Center

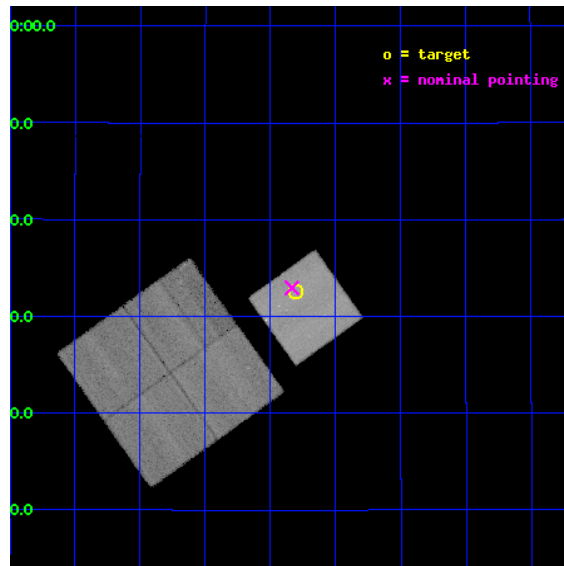
L2 Processing Date : Nov 5 2012

Contents

1	Front	2
2	OBI	3
2.1	OBI	3
2.1.1	Images	3
2.1.2	Bias	3
2.1.3	Parameters	4
2.1.4	Events	4
2.2	Compared Parameters	5
2.3	Aspect	6
2.4	Star Slots	9
2.4.1	Slot 3	9
2.4.2	Slot 4	10
2.4.3	Slot 5	11
2.4.4	Slot 6	12
2.4.5	Slot 7	13
2.5	FID Slots	14
2.5.1	Slot 0	14
2.5.2	Slot 1	15
2.5.3	Slot 2	16
A	Summary	17
A.1	Status	17
A.2	Comments	17

1 Front

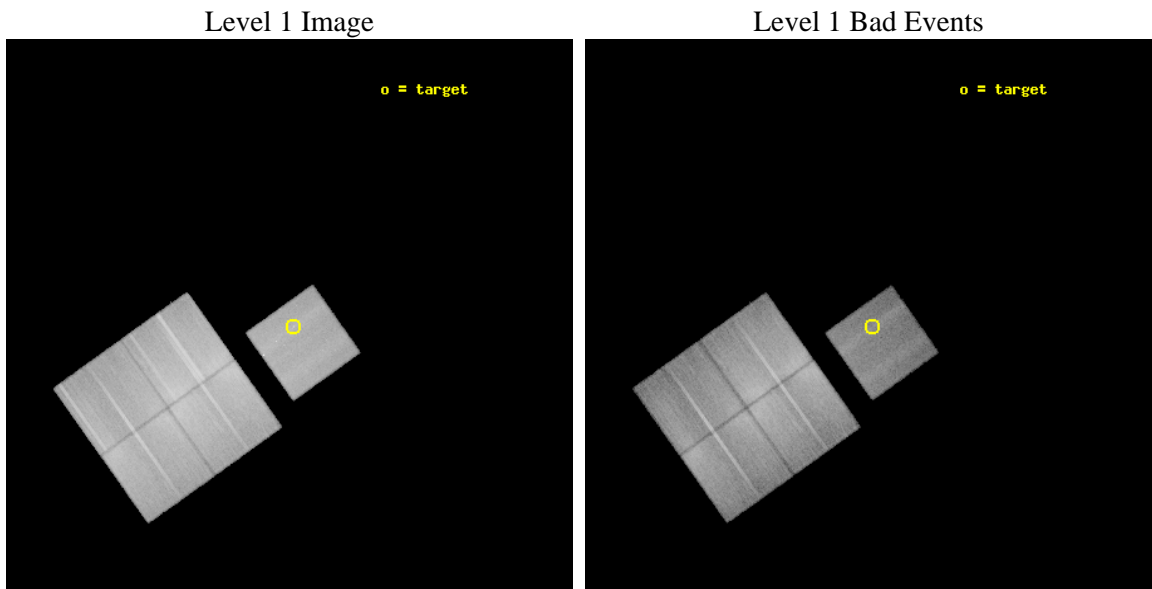
seq_num	600326	Sequence number
obs_id	3952	Observation id
title	DO ULIG'S DRIVE HOT GALACTIC WINDS?	Proposal title
observer	Dr. Crystal Martin	Principal investigator
object	IRAS10565+2448	Source name
dtycycle	0	
cycle	P	events from which exps? Prim/Second/Both
ra_targ	164.826042	Observer's specified target RA [deg]
dec_targ	24.542583	Observer's specified target Dec [deg]
ra_nom	164.83363386213	Nominal RA [deg]
dec_nom	24.549391751156	Nominal Dec [deg]
roll_nom	54.571802389274	Nominal Roll [deg]
revision	3	Processing version of data
ontime	29254.699943721	Sum of GTIs [s]
liveltime	28872.46575196	Livetime [s]
ontime0	29254.699943721	Sum of GTIs [s]
ontime1	29254.699943721	Sum of GTIs [s]
ontime2	29254.699943721	Sum of GTIs [s]
ontime3	29251.558983505	Sum of GTIs [s]
ontime7	29254.699943721	Sum of GTIs [s]
l2events	316387	Number of level 2 events



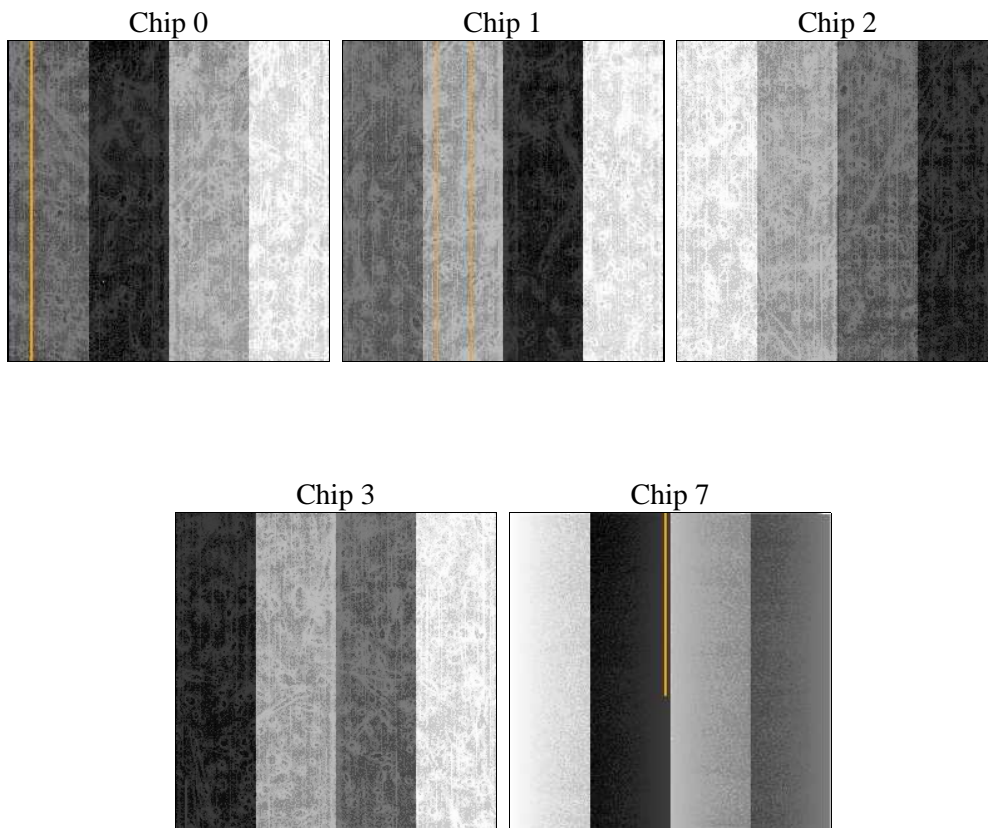
2 OBI

2.1 OBI

2.1.1 Images



2.1.2 Bias



2.1.3 Parameters

obi_num	0	Obi number	sched_exp_time	29090.000000	[s] Scheduled observation exposure time
ascdsver	8.4.5	Processing system revision	ontime	29254.699943721	Sum of GTIs [s]
caldbver	4.5.2	 	ontime0	29254.699943721	Sum of GTIs [s]
date	2012-11-05T21:02:31	Date and time of file creation	ontime1	29254.699943721	Sum of GTIs [s]
revision	3	Processing version of data	ontime2	29254.699943721	Sum of GTIs [s]
			ontime3	29251.558983505	Sum of GTIs [s]
			ontime7	29254.699943721	Sum of GTIs [s]
			l1events	1887430	Number of level 1 events

2.1.4 Events

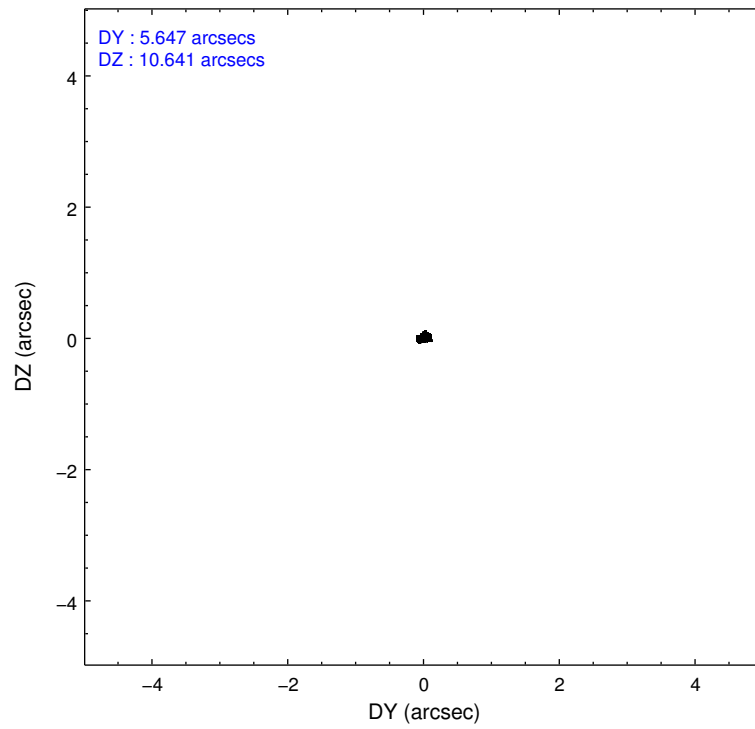
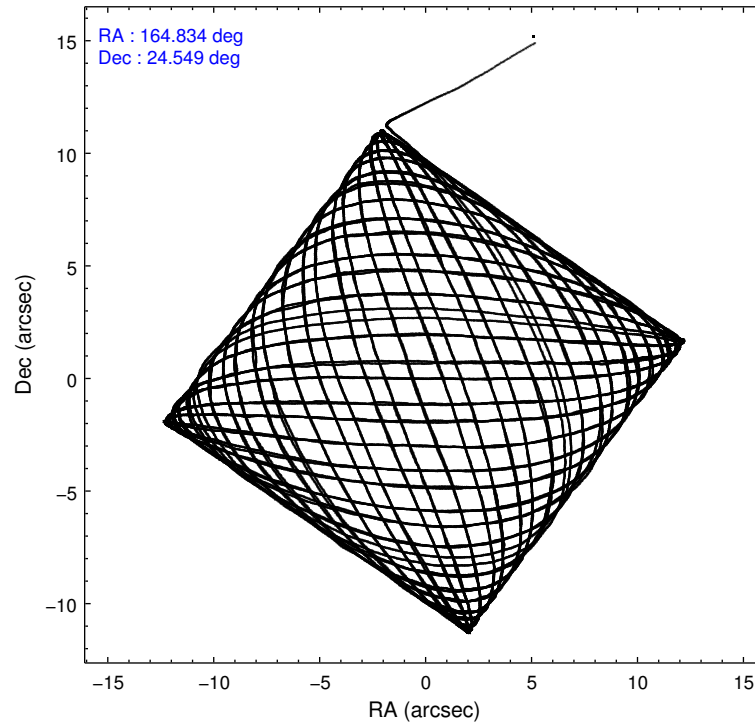
	ccd 0	ccd 1	ccd 2	ccd 3	ccd 7
level 1 events	333183	354994	471770	418263	309220
rejected events	261268	297766	382076	361493	177084
rejected %	78%	83%	80%	86%	57%

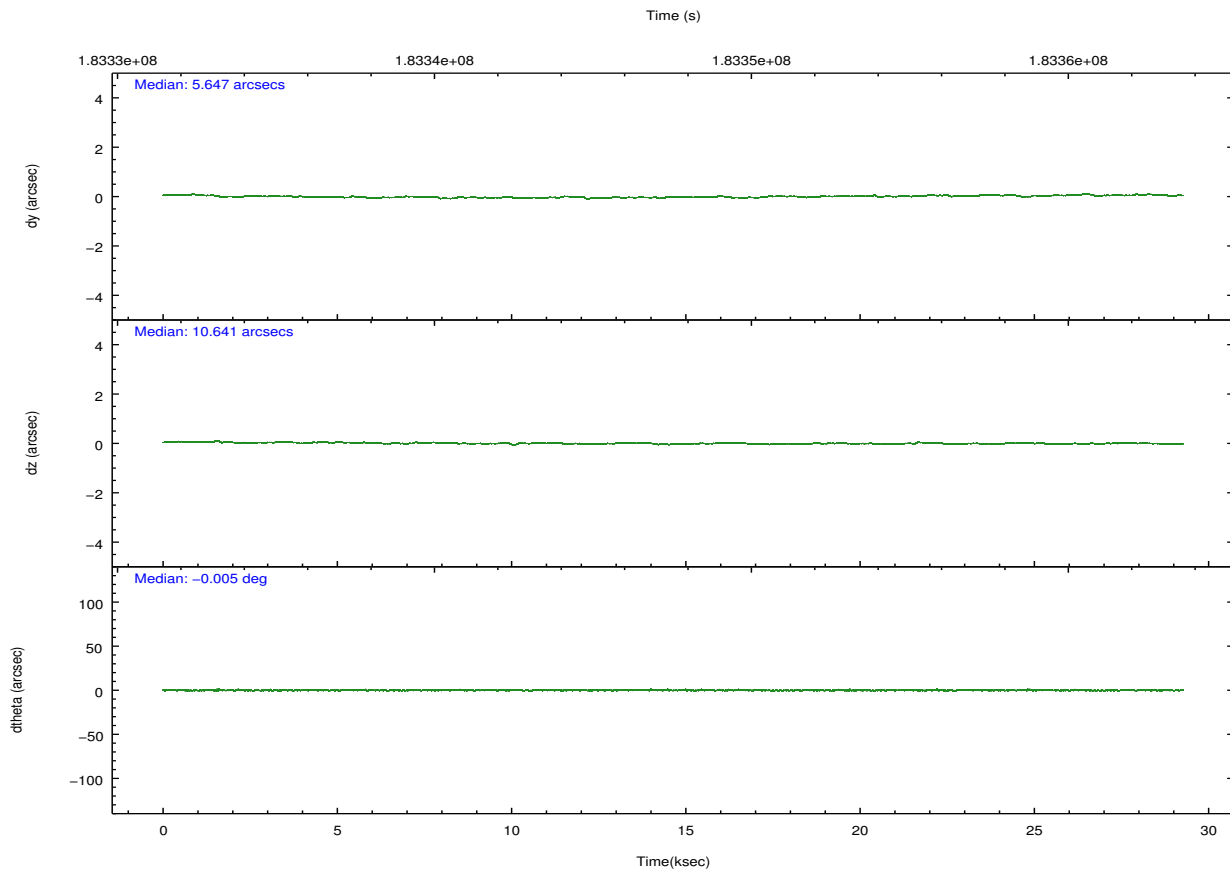
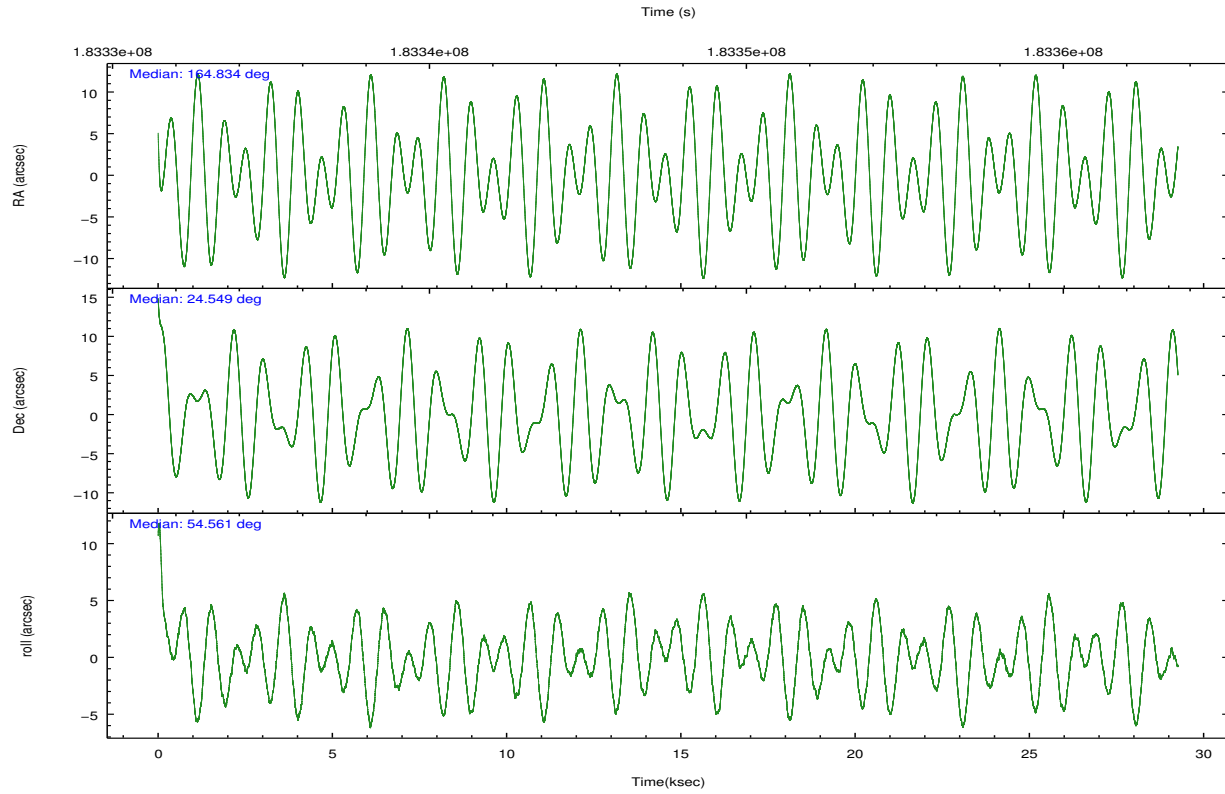
	ccd 0	ccd 1	ccd 2	ccd 3	ccd 7
grade 0 events	29013	17524	39986	18148	15771
	8%	4%	8%	4%	5%
grade 1 events	263	162	430	194	821
	0%	0%	0%	0%	0%
grade 2 events	24784	20478	27082	17947	34185
	7%	5%	5%	4%	11%
grade 3 events	2732	3086	2490	2573	13254
	0%	0%	0%	0%	4%
grade 4 events	3035	2811	7251	3140	13331
	0%	0%	1%	0%	4%
grade 5 events	7672	7954	7936	8331	27224
	2%	2%	1%	1%	8%
grade 6 events	14627	15175	15759	16751	60583
	4%	4%	3%	4%	19%
grade 7 events	251057	287804	370836	351179	144051
	75%	81%	78%	83%	46%

2.2 Compared Parameters

Parameter	Planned	Actual	Parameter	Planned	Actual
Instrument	ACIS	ACIS	Obspar format version number	7	7
Detector	ACIS-01237	ACIS-01237	Obspar file type	PREDICTED	ACTUAL
Grating	NONE	NONE	Obspar update status	NONE	UPDATED
Data mode	FAINT	FAINT	Number of optional ACIS chips dropped	0	0
Observation mode	POINTING	POINTING	On-chip summing requested	N	N
[deg] Pointing RA	164.831194	164.833633862127	Subarray requested	NONE	NONE
[deg] Pointing Dec	24.522215	24.5493917511557	Alternating exposures requested	N	N
[deg] Pointing Roll	54.416187	54.57180238927354	[s] Primary exposure time	0.000000	3.1
[mm] SIM focus pos	-0.684267	-0.6828225247311905			
[mm] SIM defocus	0	0.001444936568705701			
[mm] SIM translation stage pos	-190.132523	-190.1400660498719			
[mm] SIM translation stage offset	0	0.00754346686406393			
[s] Observation start time (MET)	183333069.184000	183331468.45165			
Observation start date	2003-10-23T21:50:05	2003-10-23T21:24:28			
[s] Observation end time (MET)	183362159.184000	183363112.25301			
Observation end date	2003-10-24T05:54:55	2003-10-24T06:11:52			
Read mode	TIMED	TIMED			

2.3 Aspect



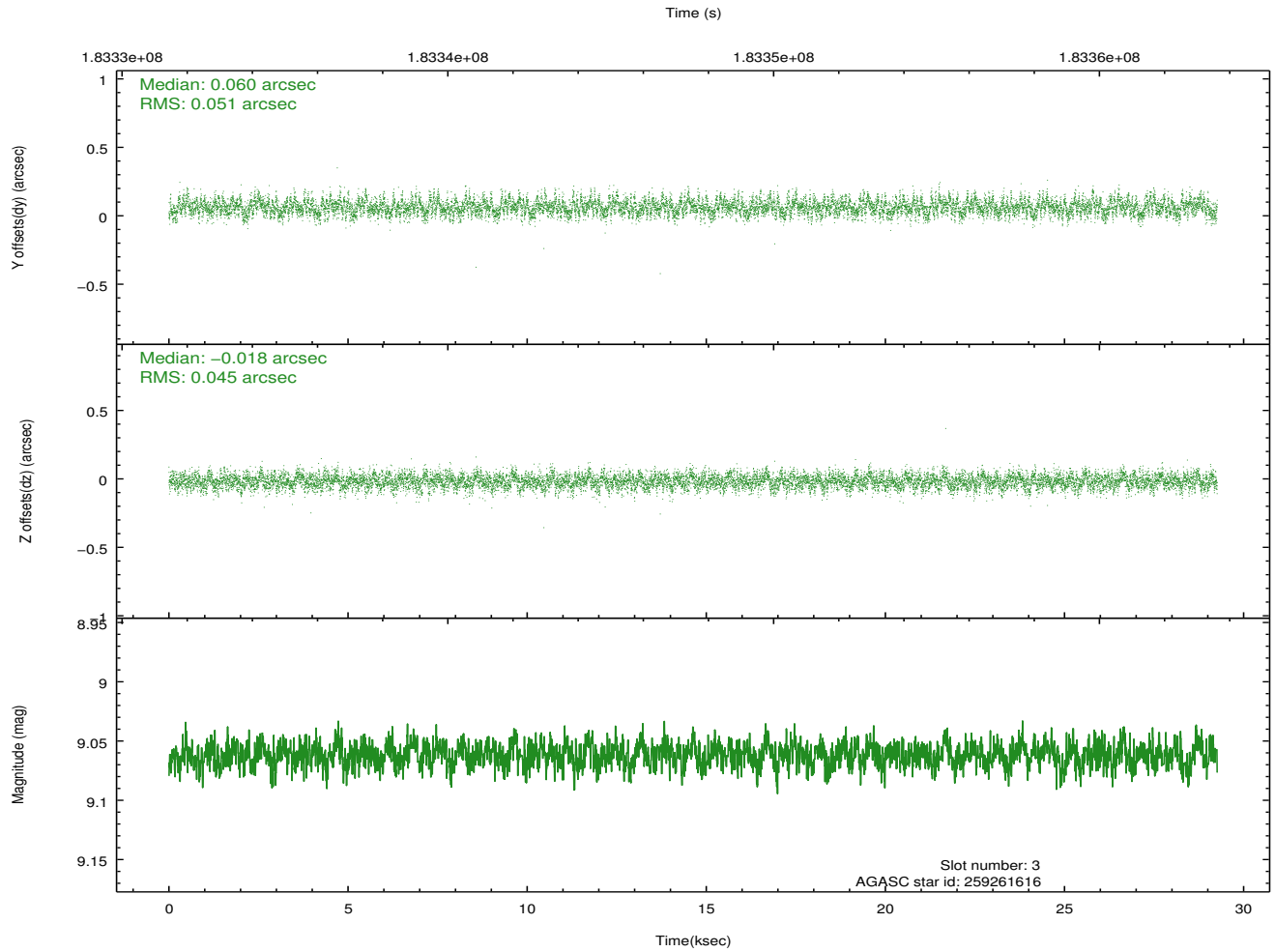
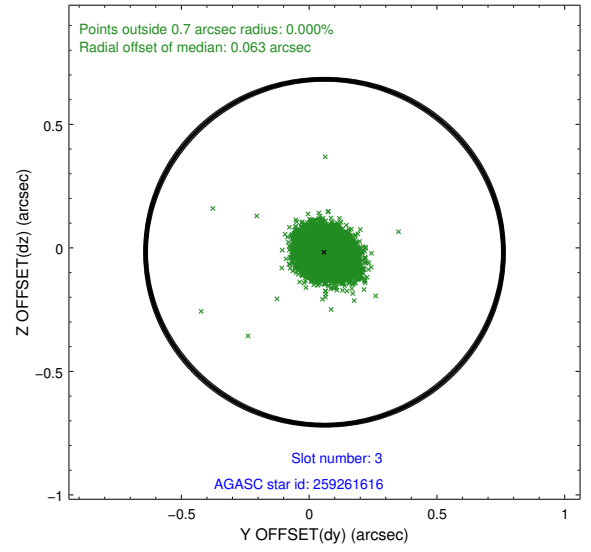
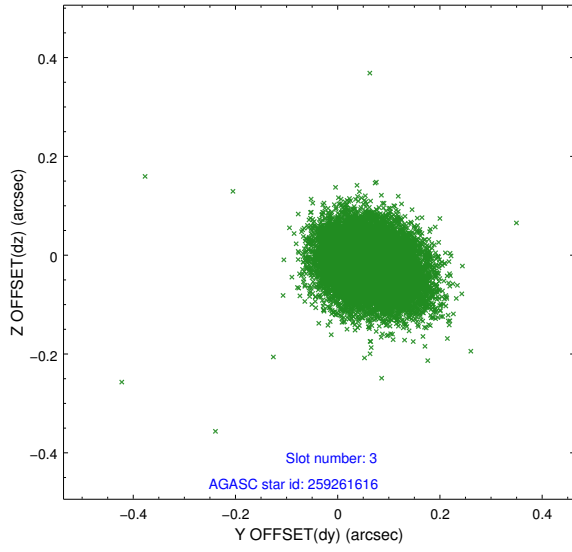


Slot Statistics

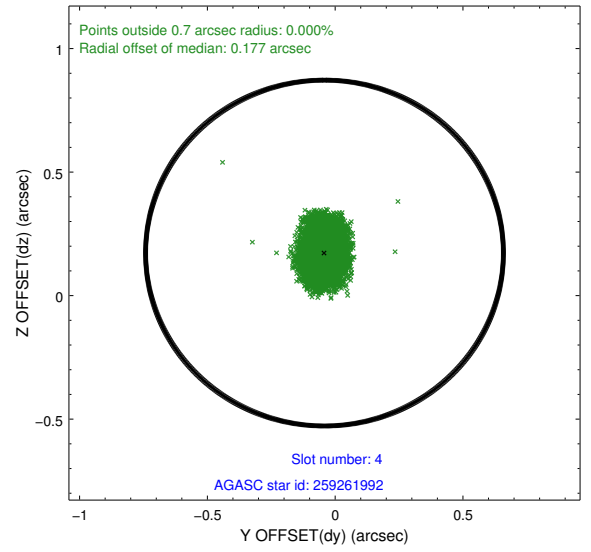
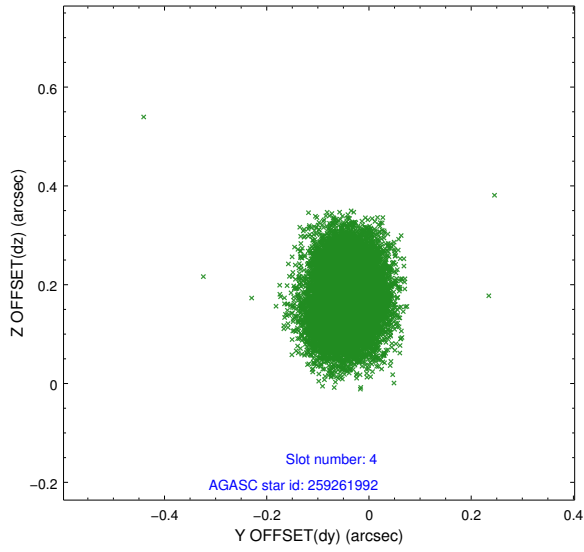
slot	status	id	mag	n_pts	med_dy	med_dz	dr1	dr2	ra	dec	mean_y	mean_z
0	FID	ACIS-S-2	7.10	7137	-0.069	-0.024	0.006	0.010	0.000000	0.000000	-758.41	-1731.94
1	FID	ACIS-S-4	7.20	7136	0.093	0.040	0.006	0.011	0.000000	0.000000	2154.97	176.56
2	FID	ACIS-S-5	7.23	7137	-0.055	-0.007	0.007	0.011	0.000000	0.000000	-1811.16	170.22
3	GUIDE	259261616	9.06	14265	0.060	-0.018	0.071	0.116	164.369358	24.419573	-1179.64	1017.68
4	GUIDE	259261992	8.65	14274	-0.042	0.172	0.074	0.121	165.245943	24.065554	-542.14	-2064.18
5	GUIDE	259262440	9.28	14272	-0.126	0.098	0.079	0.131	165.372489	24.457413	845.46	-1575.89
6	GUIDE	259263032	7.52	14275	-0.007	-0.113	0.056	0.085	164.537777	24.375499	-988.60	475.65
7	GUIDE	259271344	7.46	14274	0.112	-0.139	0.050	0.080	164.312970	24.142782	-2098.96	591.64

2.4 Star Slots

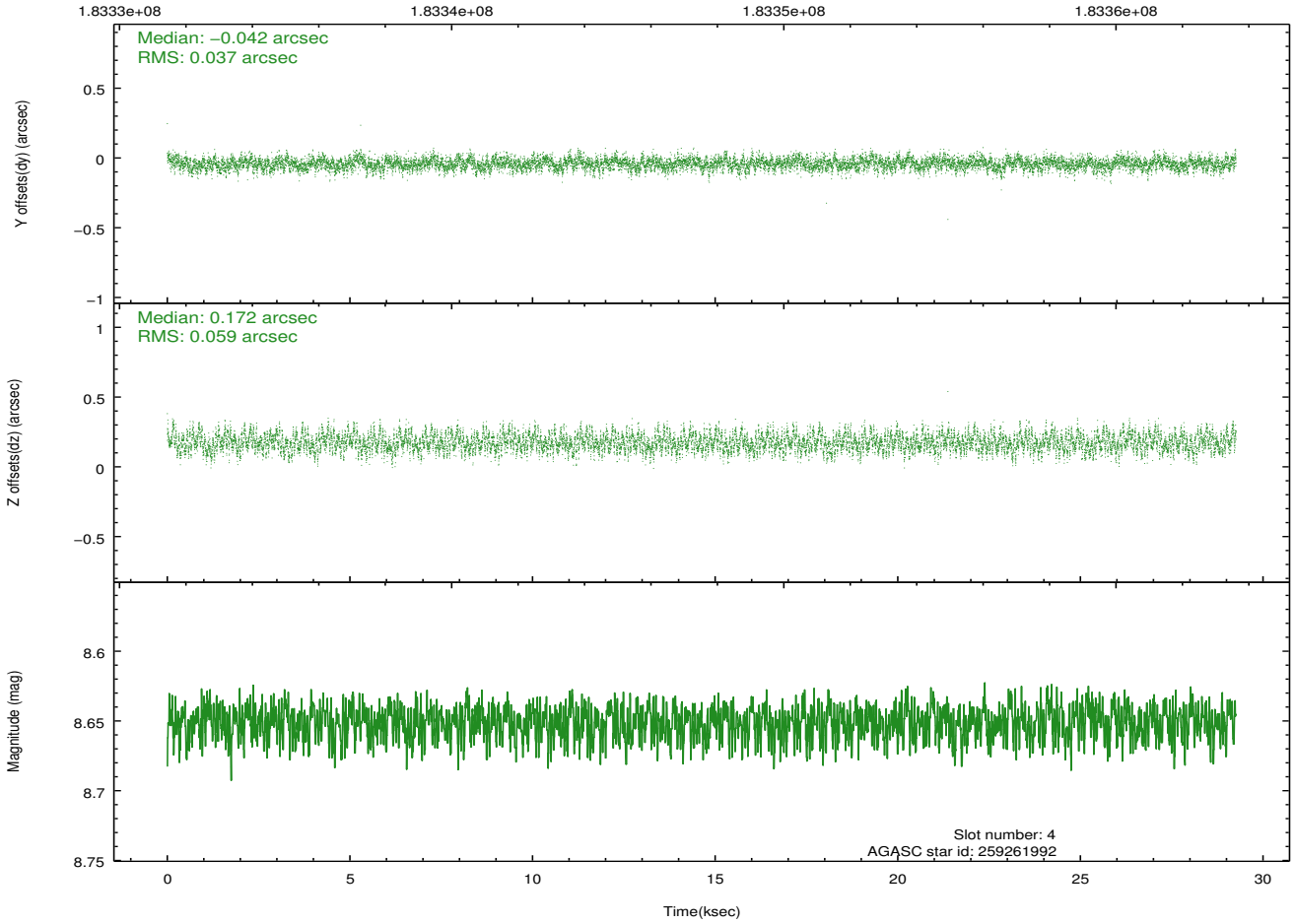
2.4.1 Slot 3



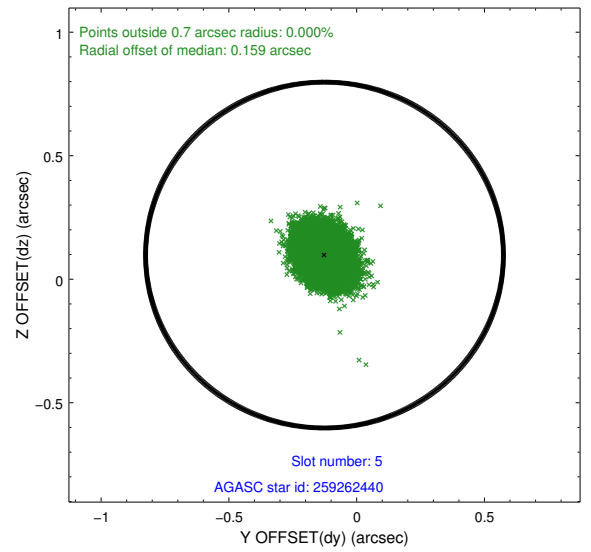
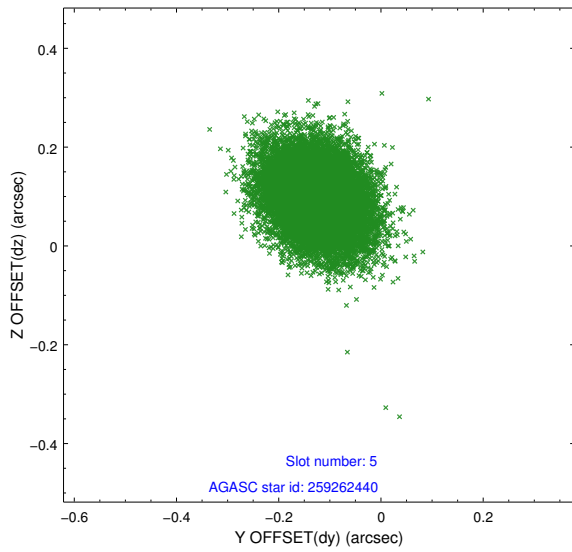
2.4.2 Slot 4



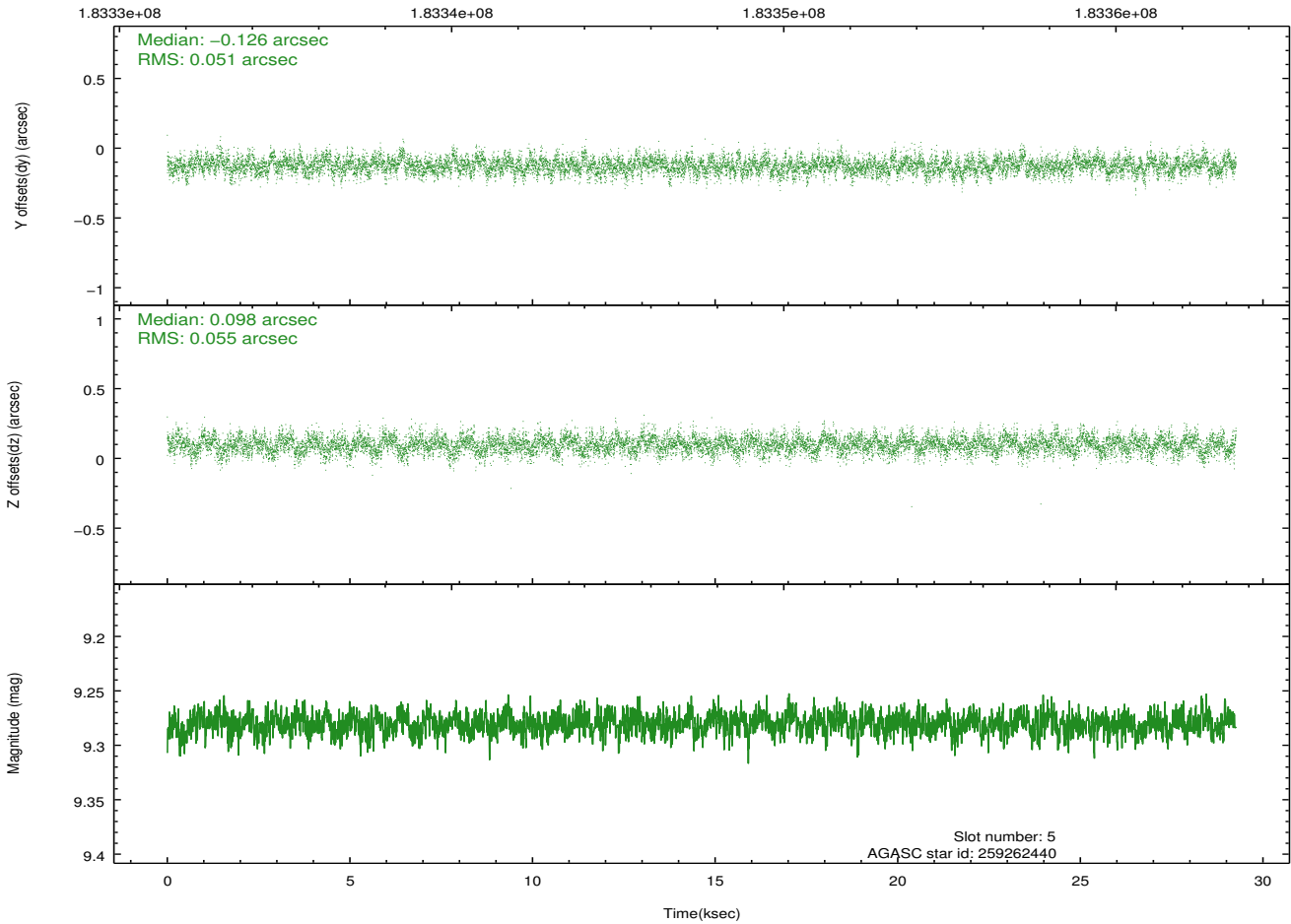
Time (s)



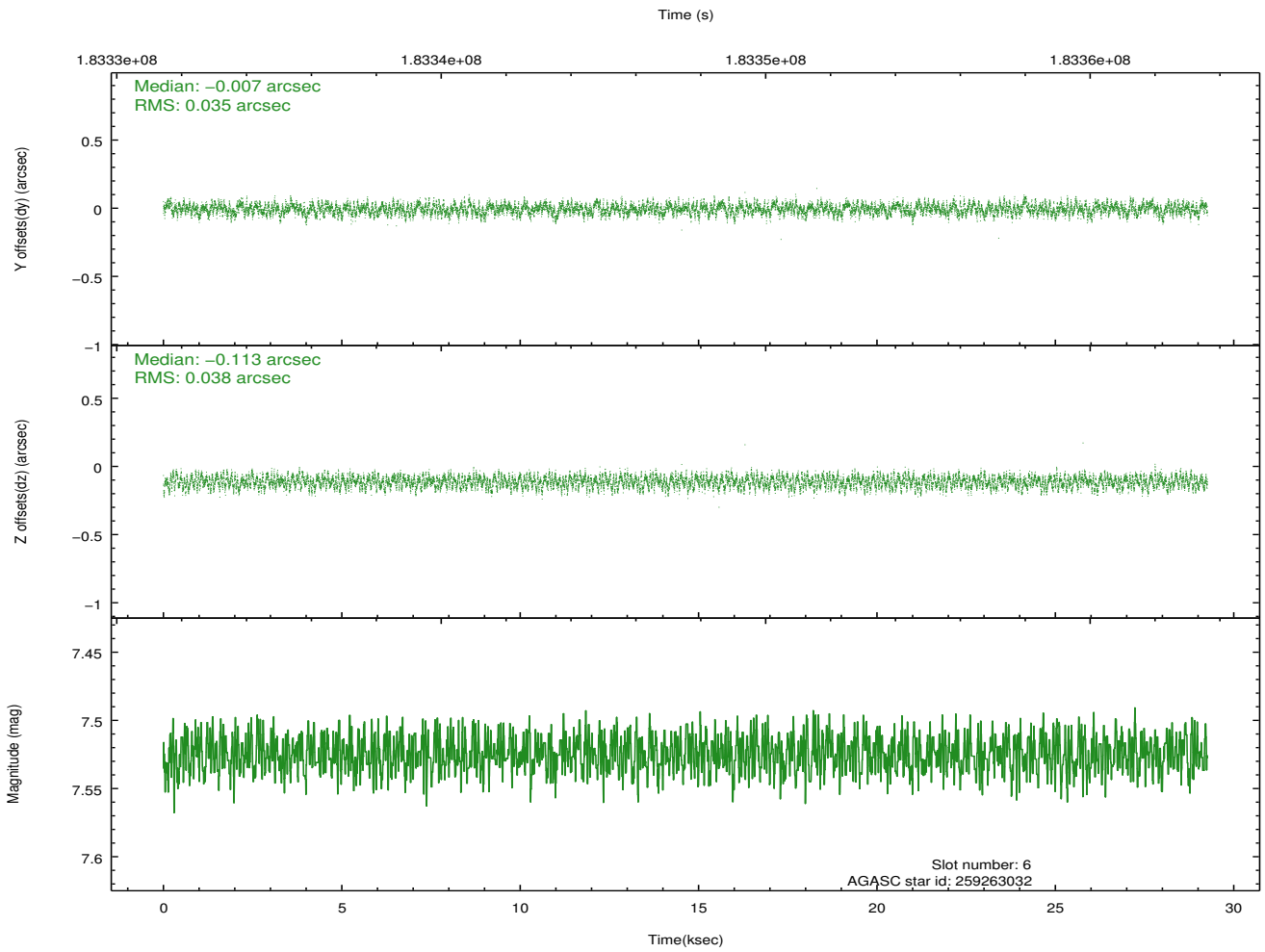
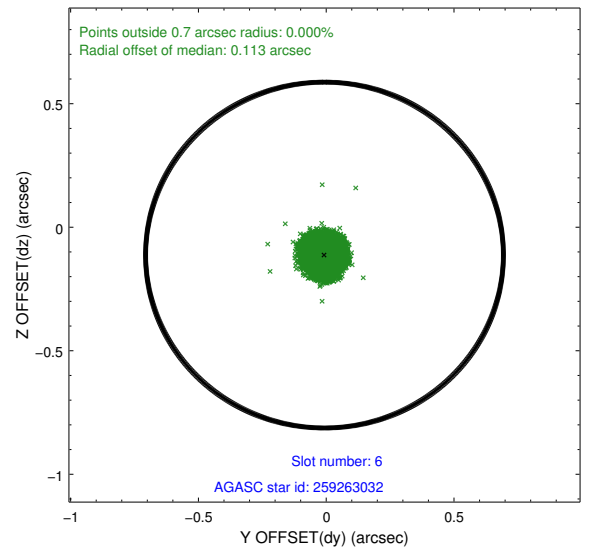
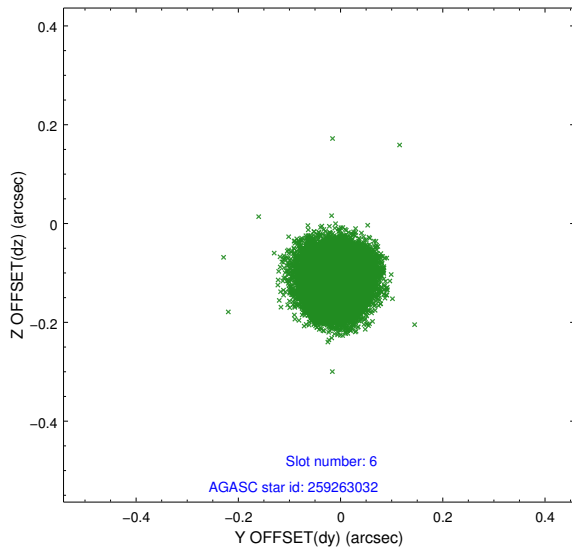
2.4.3 Slot 5



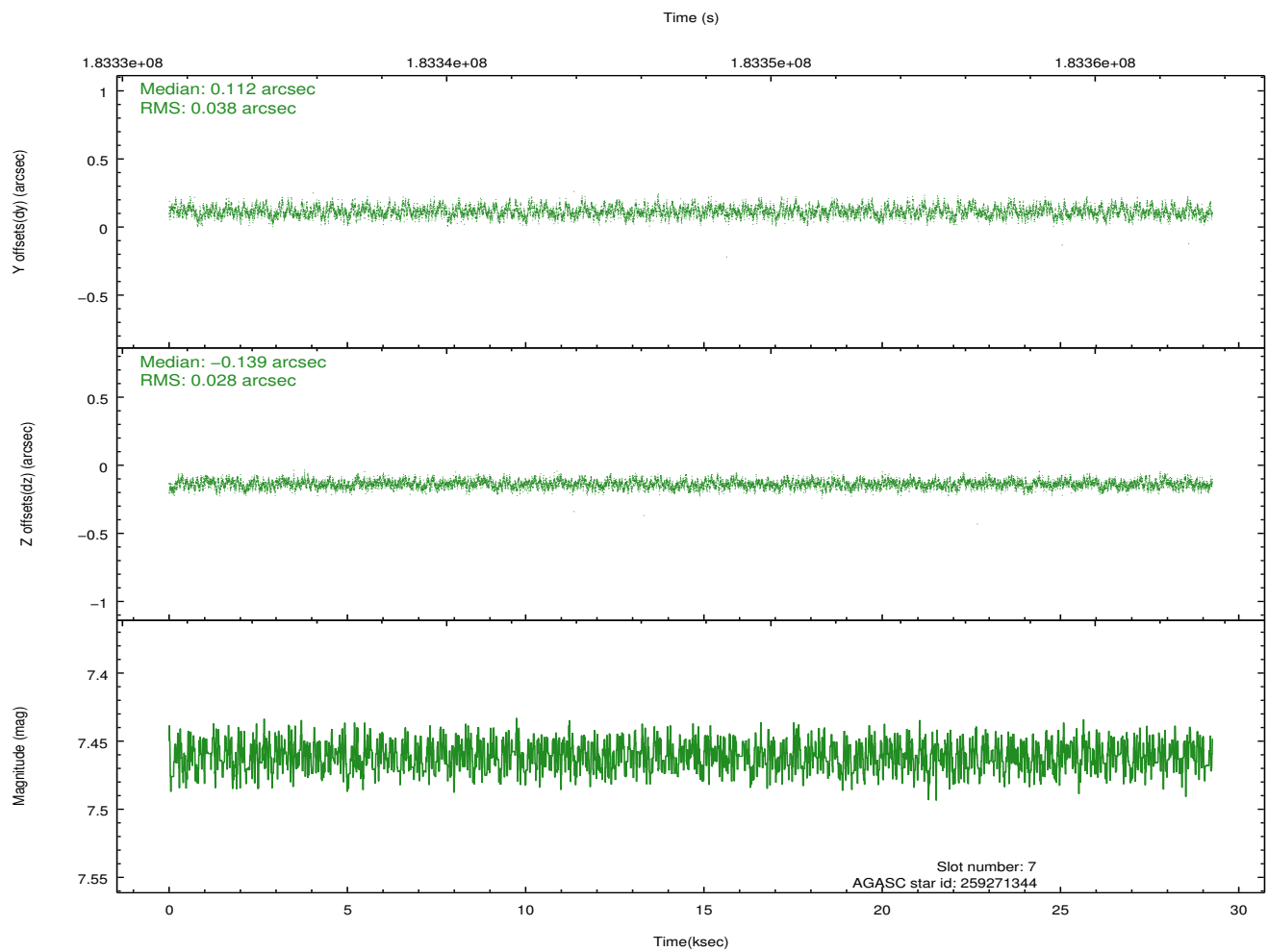
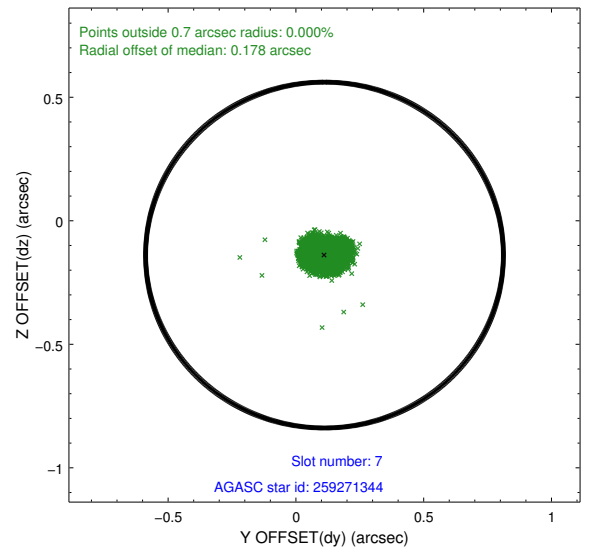
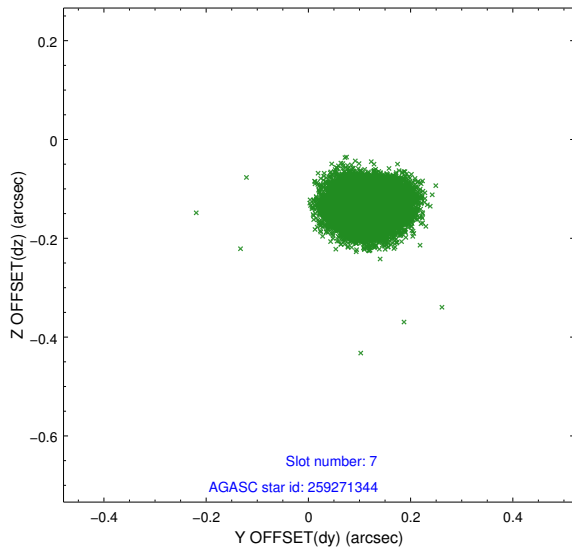
Time (s)



2.4.4 Slot 6

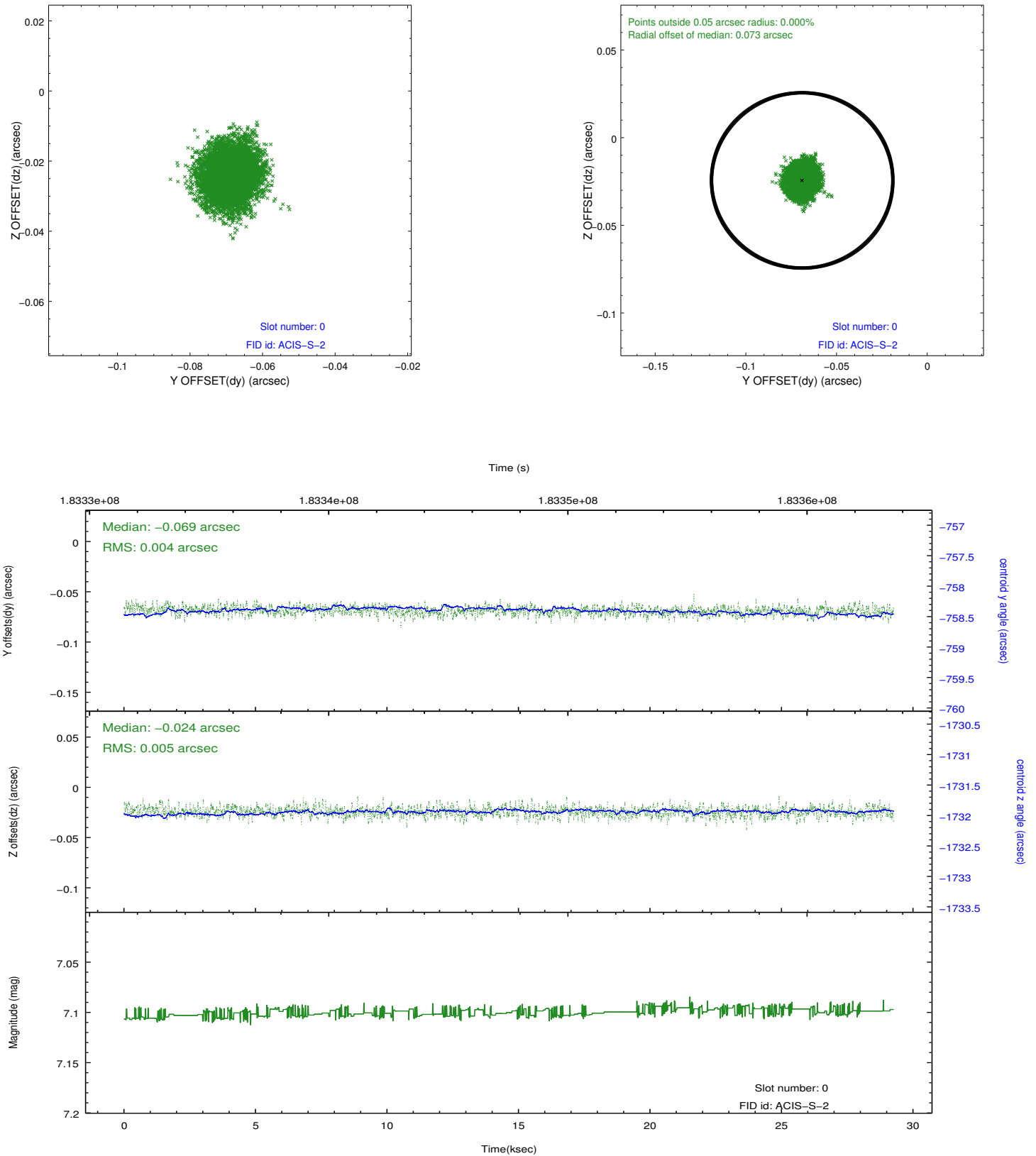


2.4.5 Slot 7

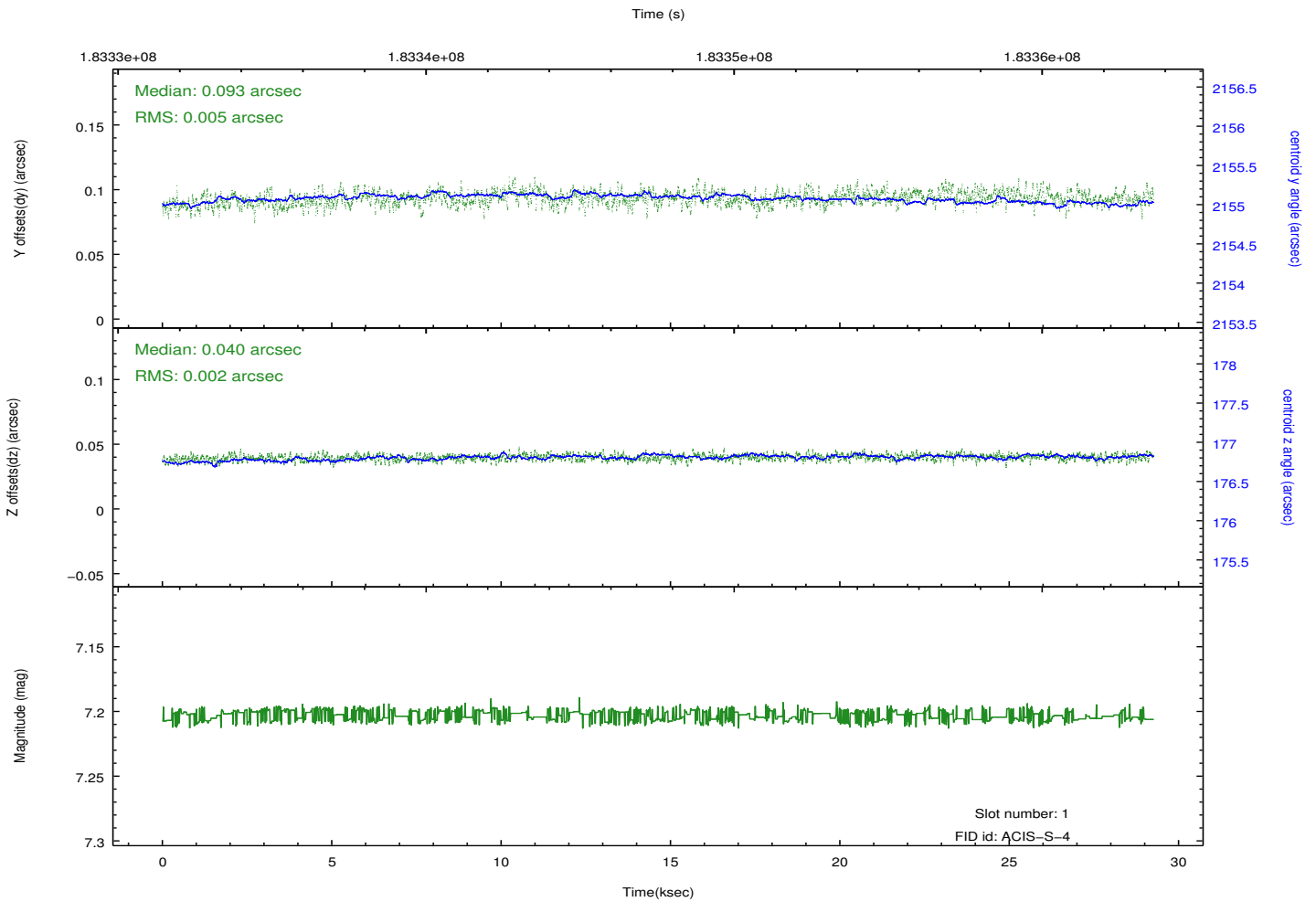
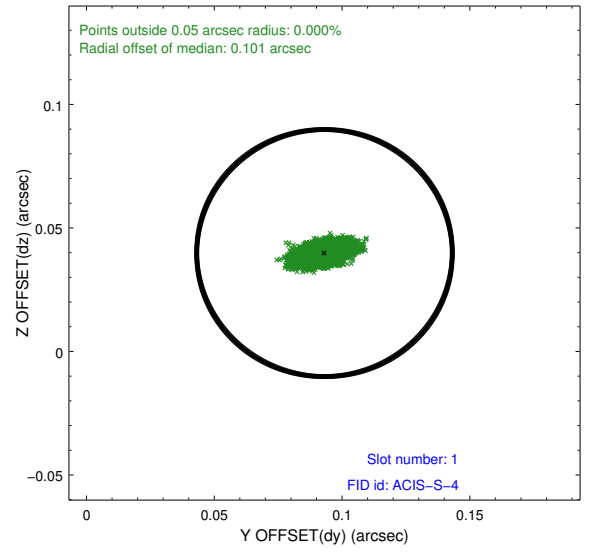
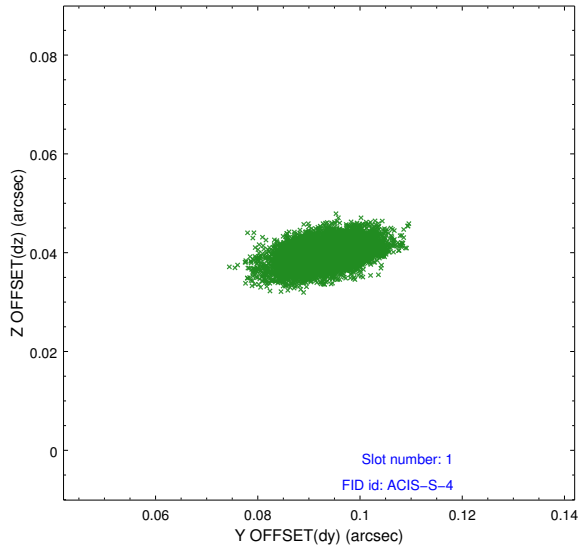


2.5 FID Slots

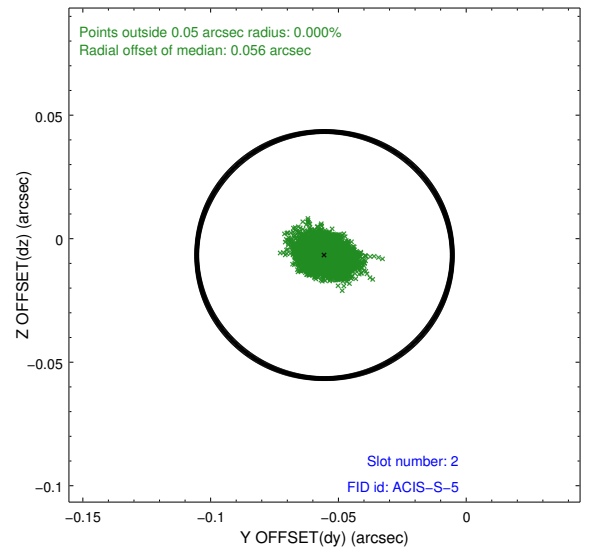
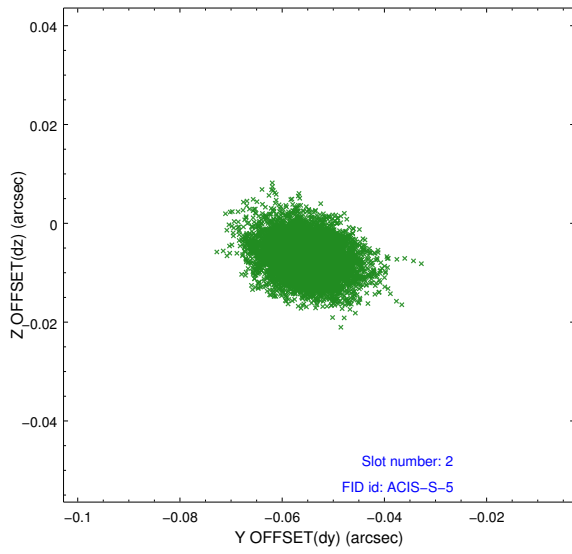
2.5.1 Slot 0



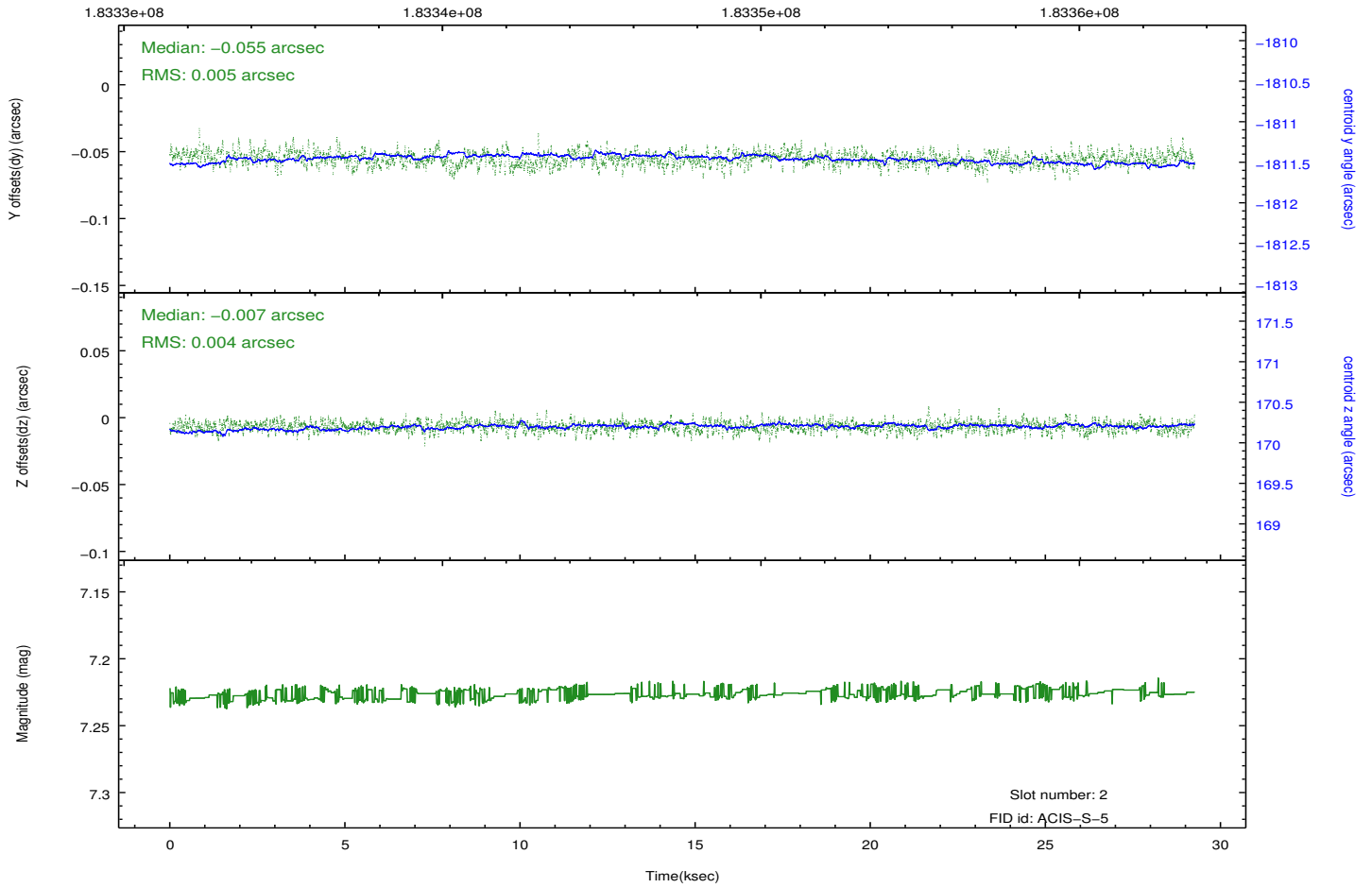
2.5.2 Slot 1



2.5.3 Slot 2



Time (s)



A Summary

A.1 Status

V&V Scientist	Beth Sundheim
V&V Date (YYYY-MM-DD)	2012.11.27
V&V Edition	1
V&V Disposition and Status	OK
V&V Charge Time	29.254

A.2 Comments