

# V&V Reference Report

## L2 ASCDS Version : 8.4.5

Observation 4002 - L2 Version 3  
Chandra X-Ray Center

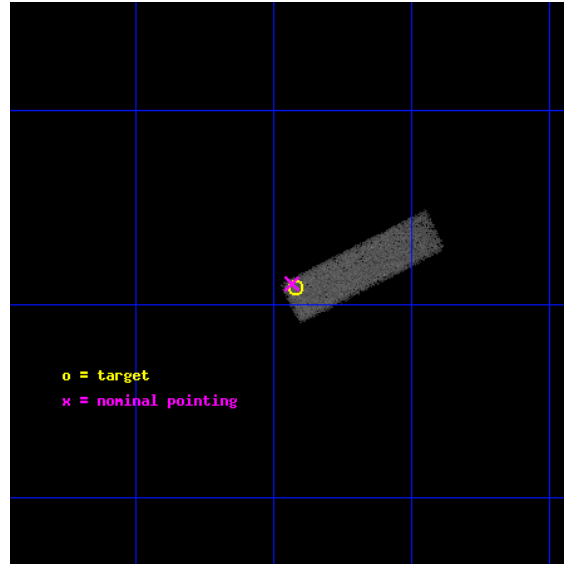
L2 Processing Date : Nov 4 2012

## Contents

<b>1</b>	<b>Front</b>	<b>2</b>
<b>2</b>	<b>OBI</b>	<b>3</b>
2.1	OBI . . . . .	3
2.1.1	Images . . . . .	3
2.1.2	Bias . . . . .	3
2.1.3	Parameters . . . . .	4
2.1.4	Events . . . . .	4
2.2	Compared Parameters . . . . .	5
2.3	Aspect . . . . .	6
2.4	Star Slots . . . . .	9
2.4.1	Slot 3 . . . . .	9
2.4.2	Slot 4 . . . . .	10
2.4.3	Slot 5 . . . . .	11
2.4.4	Slot 6 . . . . .	12
2.4.5	Slot 7 . . . . .	13
2.5	FID Slots . . . . .	14
2.5.1	Slot 0 . . . . .	14
2.5.2	Slot 1 . . . . .	15
2.5.3	Slot 2 . . . . .	16
<b>A</b>	<b>Summary</b>	<b>17</b>
A.1	Status . . . . .	17
A.2	Comments . . . . .	17

# 1 Front

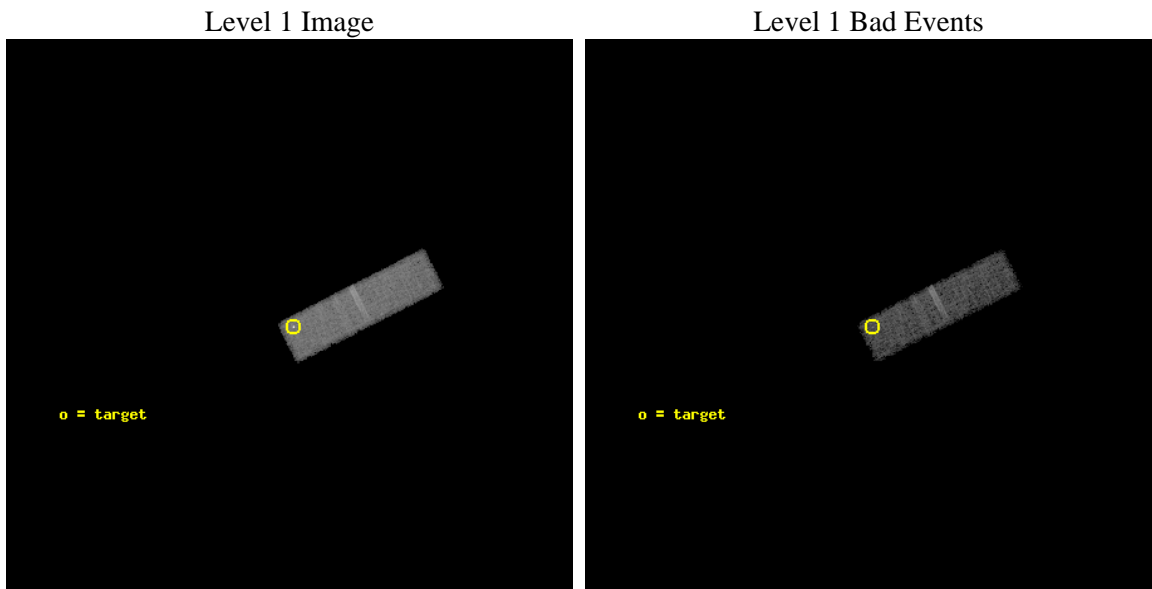
seq_num	700681	Sequence number
obs_id	4002	Observation id
title	THE NATURE OF THE ``COMPOSITE" SEYFERT/STAR-FORMING GALAXIES	Pr
observer	Dr Anna Wolter	Principal investigator
object	IRAS01319-1604	Source name
dtcycle	0	&#160
cycle	P	events from which exps? Prim/Second/Both
ra_targ	23.605	Observer's specified target RA [deg]
dec_targ	-15.818722	Observer's specified target Dec [deg]
ra_nom	23.60867667443	Nominal RA [deg]
dec_nom	-15.815712297115	Nominal Dec [deg]
roll_nom	63.259792957314	Nominal Roll [deg]
revision	3	Processing version of data
ontime	25146.400374711	Sum of GTIs [s]
livetime	23919.338318949	Livetime [s]
ontime3	25146.400374711	Sum of GTIs [s]
l2events	24731	Number of level 2 events



## 2 OBI

### 2.1 OBI

#### 2.1.1 Images



#### 2.1.2 Bias

Chip 3



### 2.1.3 Parameters

obi_num	0	Obi number	sched_exp_time	24568.577000	[s] Scheduled observation exposure time
ascdsver	8.4.5	Processing system revision	ontime	25146.400374711	Sum of GTIs [s]
caldbver	4.5.2	&#160	ontime3	25146.400374711	Sum of GTIs [s]
date	2012-11-04T11:21:24	Date and time of file creation	l1events	74880	Number of level 1 events
revision	3	Processing version of data			

### 2.1.4 Events

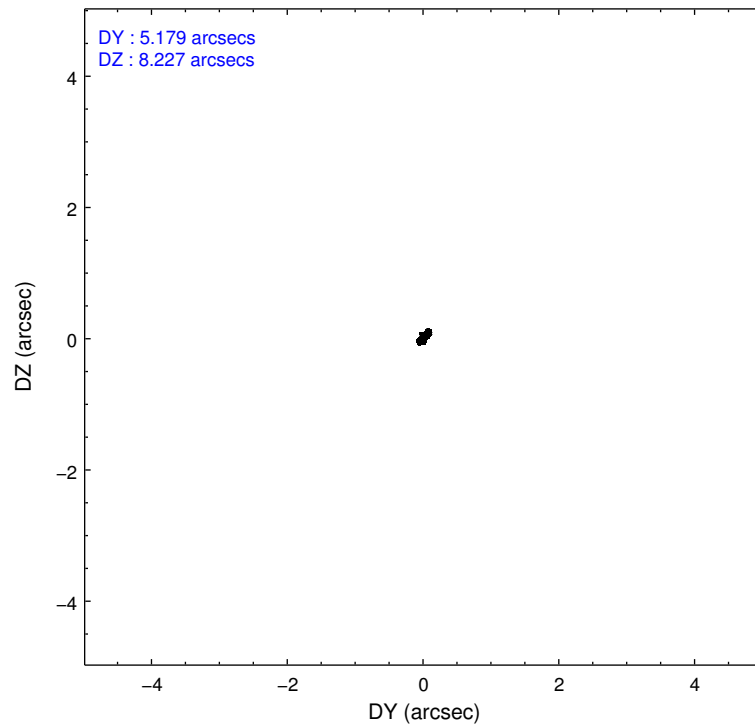
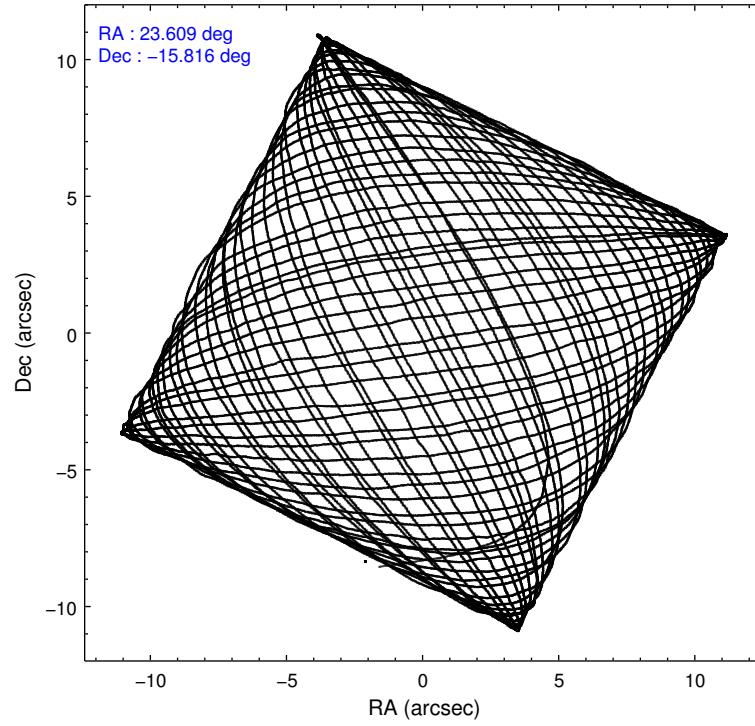
	<b>ccd 3</b>
level 1 events	74880
rejected events	48780
rejected %	65%

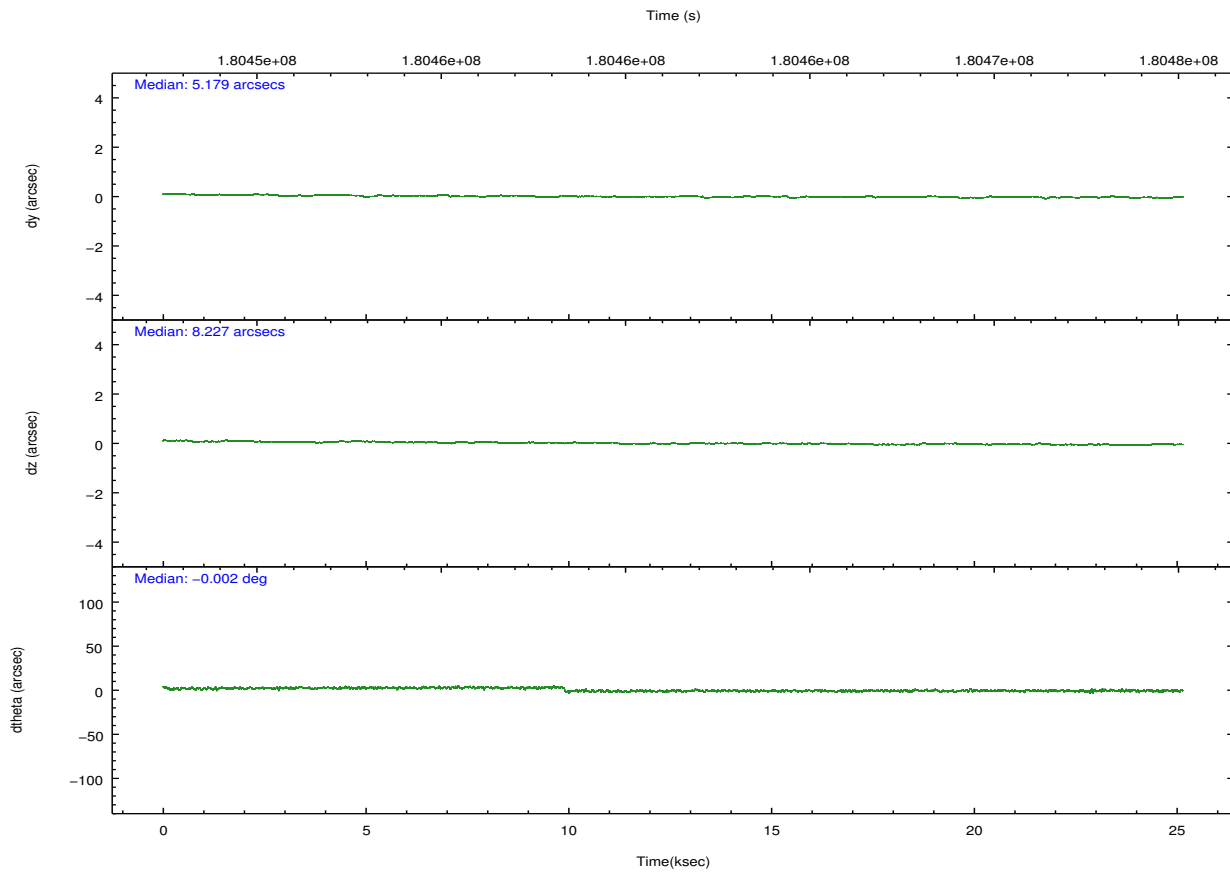
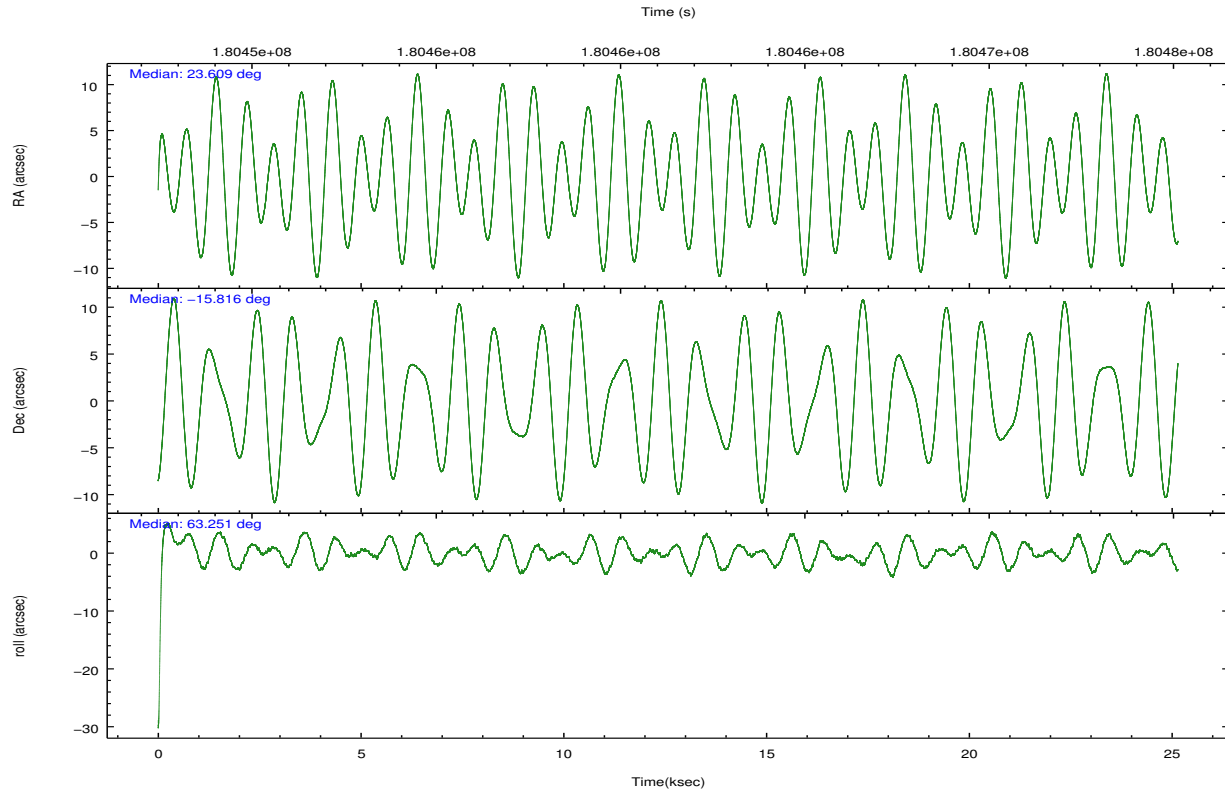
	<b>ccd 3</b>
grade 0 events	16862
	22%
grade 1 events	54
	0%
grade 2 events	4455
	5%
grade 3 events	1407
	1%
grade 4 events	1409
	1%
grade 5 events	2021
	2%
grade 6 events	2101
	2%
grade 7 events	46571
	62%

## 2.2 Compared Parameters

Parameter	Planned	Actual	Parameter	Planned	Actual
Instrument	ACIS	ACIS	Obspar format version number	7	7
Detector	ACIS-3	ACIS-3	Obspar file type	PREDICTED	ACTUAL
Grating	NONE	NONE	Obspar update status	NONE	UPDATED
Data mode	FAINT	FAINT	Number of optional ACIS chips dropped	0	0
Observation mode	POINTING	POINTING	On-chip summing requested	N	N
[deg] Pointing RA	23.610409	23.60867667443032	Subarray requested	CUSTOM	1/4
[deg] Pointing Dec	-15.843058	-15.81571229711465	Subarray start row	769	769
[deg] Pointing Roll	63.051592	63.2597929573136	Subarray row count	256	256
[mm] SIM focus pos	-0.782348	-0.7809083437167272	Alternating exposures requested	N	N
[mm] SIM defocus	0	0.001439871863259334	[s] Primary exposure time	0.000000	0.8
[mm] SIM translation stage pos	-233.592463	-233.5874344608287			
[mm] SIM translation stage offset	0	-0.005018542100998502			
[s] Observation start time (MET)	180449295.184000	180448136.15278			
Observation start date	2003-09-20T12:47:11	2003-09-20T12:28:56			
[s] Observation end time (MET)	180473863.184000	180474177.81639			
Observation end date	2003-09-20T19:36:39	2003-09-20T19:42:57			
Read mode	TIMED	TIMED			

## 2.3 Aspect



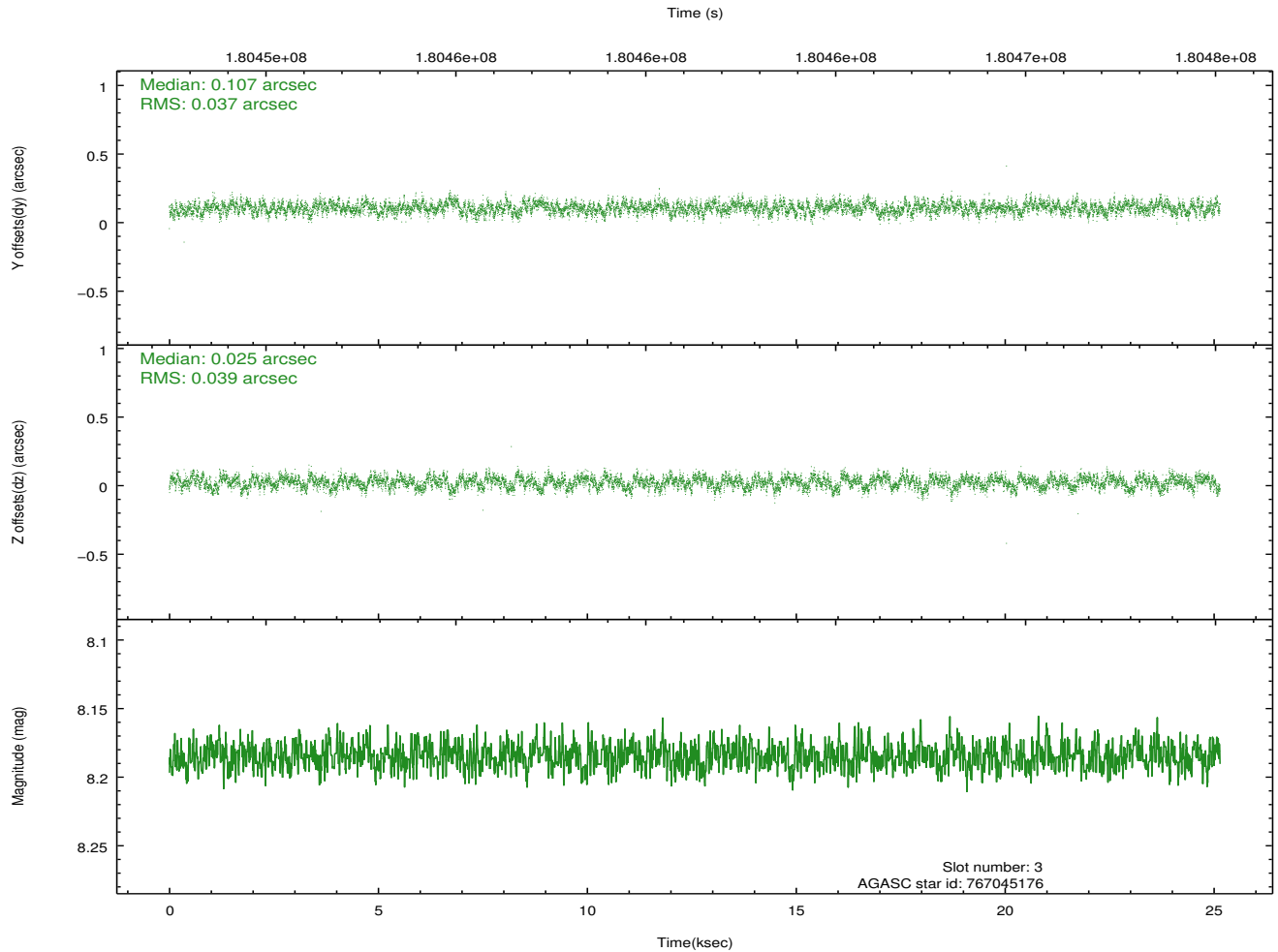
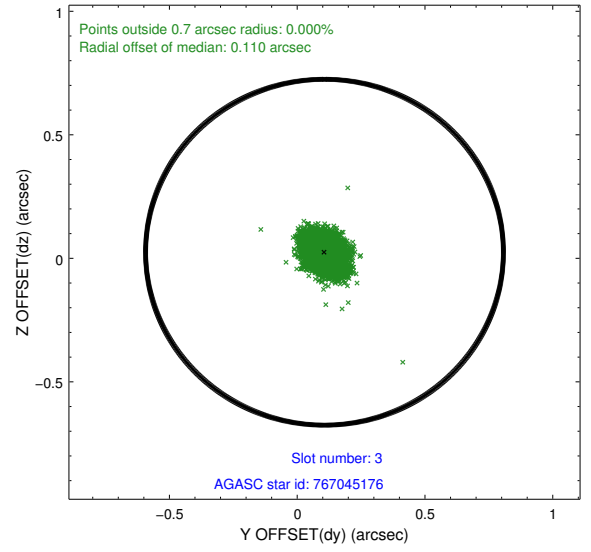
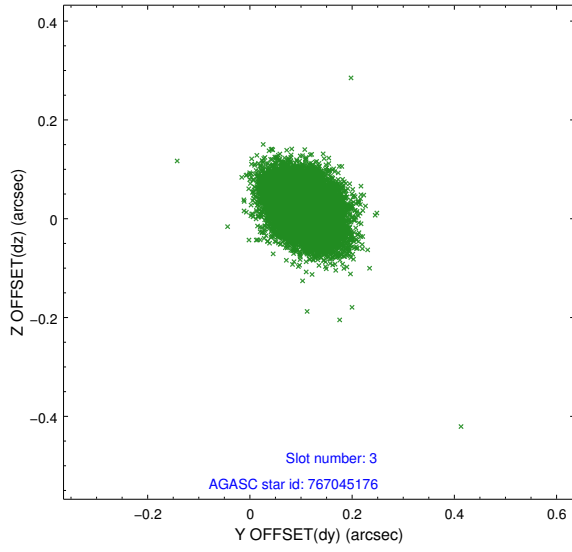


### Slot Statistics

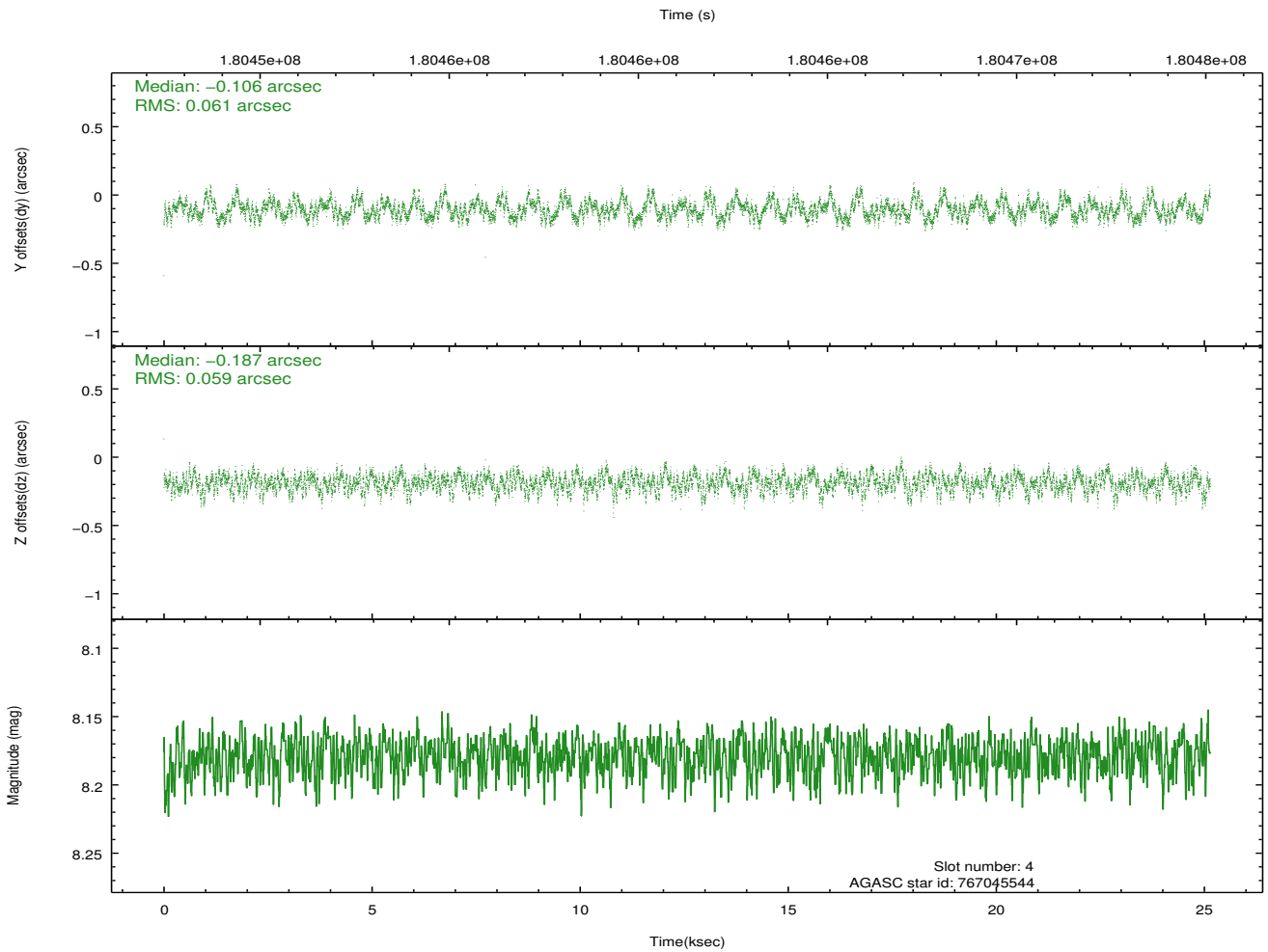
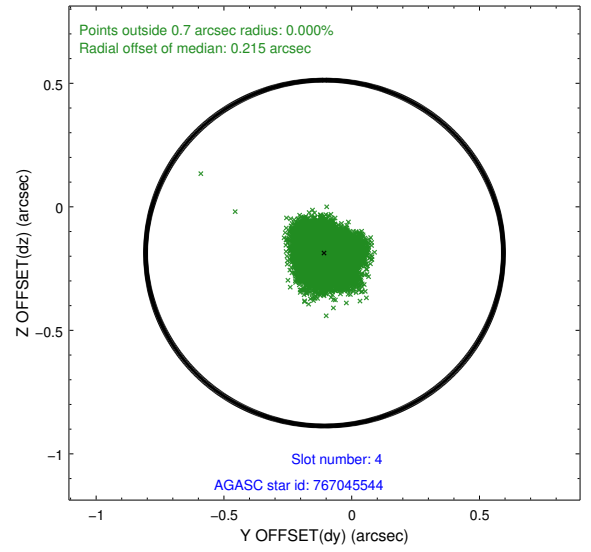
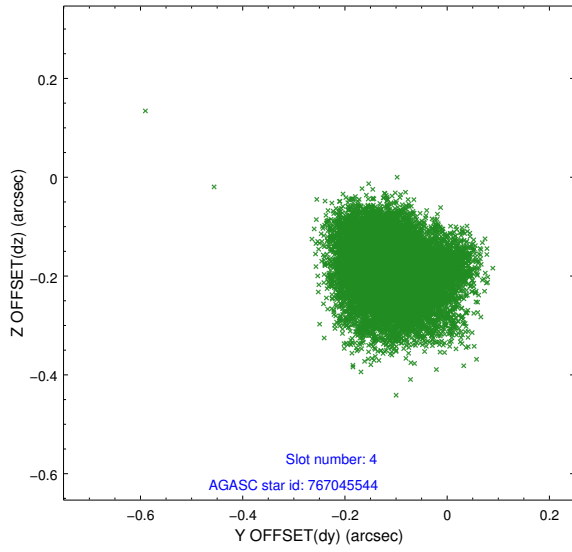
slot	status	id	mag	n_pts	med_dy	med_dz	dr1	dr2	ra	dec	mean_y	mean_z
0	FID	ACIS-I-2	7.13	6132	-0.147	-0.060	0.014	0.023	0.000000	0.000000	-759.77	-838.08
1	FID	ACIS-I-4	7.18	6133	0.067	0.096	0.020	0.030	0.000000	0.000000	2154.45	1068.18
2	FID	ACIS-I-6	7.26	6134	-0.018	0.031	0.023	0.036	0.000000	0.000000	400.58	1710.44
3	GUIDE	767045176	8.18	12267	0.107	0.025	0.058	0.093	23.158149	-16.148363	-1689.66	895.09
4	GUIDE	767045544	8.18	12267	-0.106	-0.187	0.093	0.141	23.131861	-15.450910	503.95	2119.03
5	GUIDE	767429616	8.78	12263	-0.028	-0.012	0.076	0.121	24.270624	-15.516625	2082.81	-1510.03
6	GUIDE	767437088	9.82	12255	0.097	0.003	0.116	0.188	24.288286	-15.584835	1891.43	-1675.62
7	GUIDE	767438496	8.66	12264	-0.068	0.181	0.082	0.135	24.084322	-16.016628	185.11	-1745.63

## 2.4 Star Slots

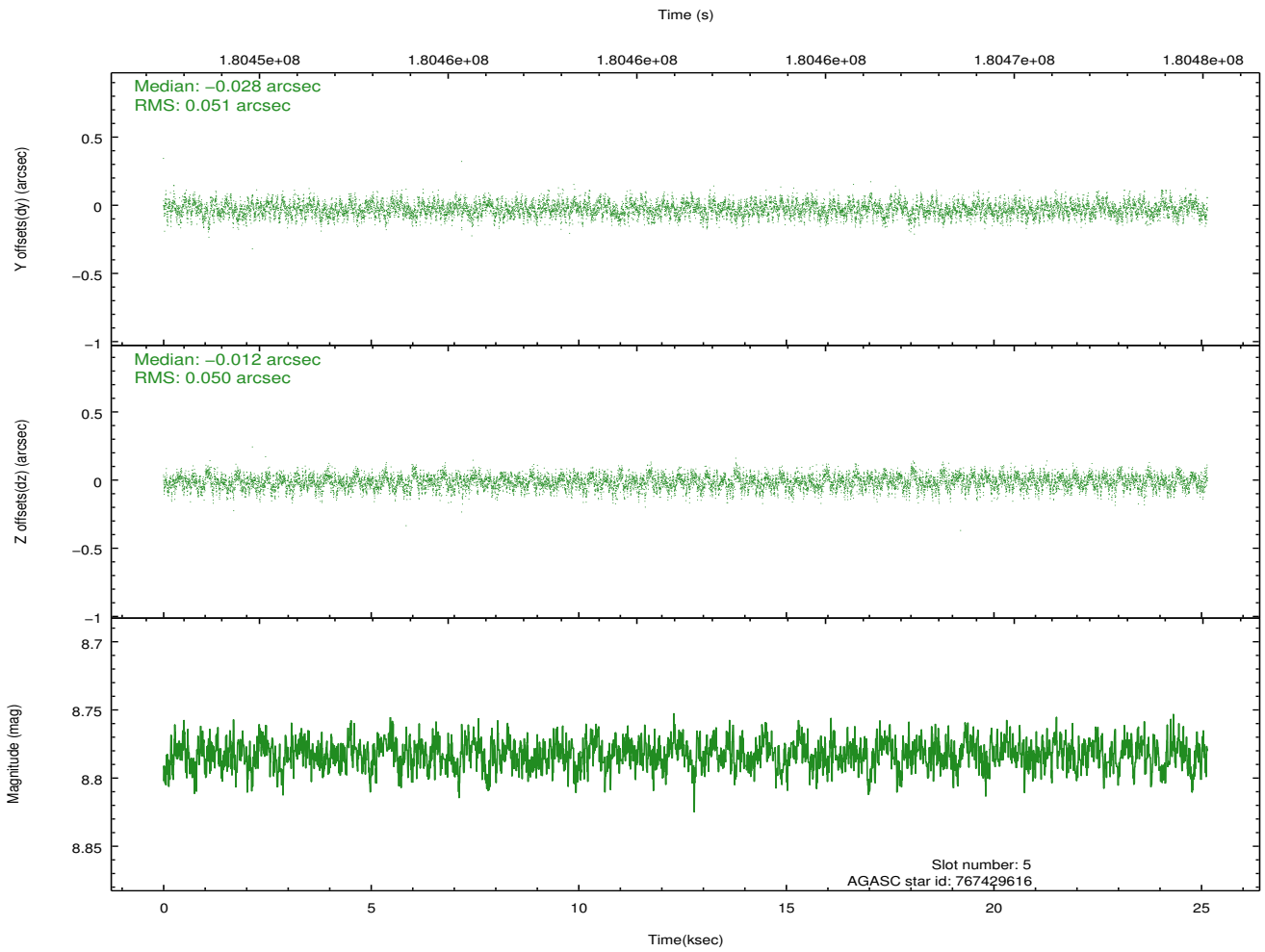
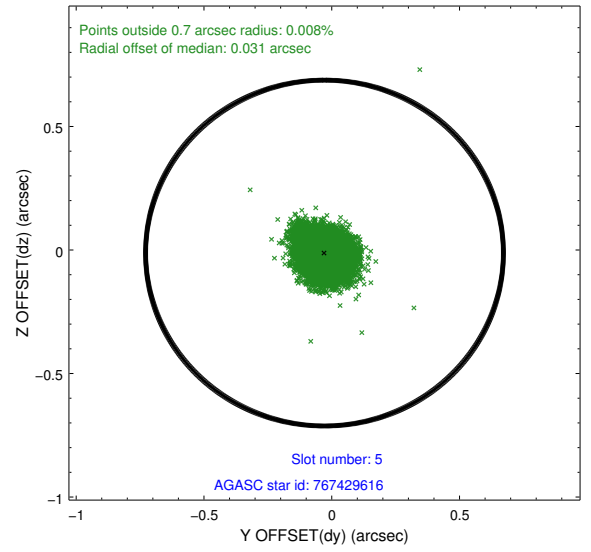
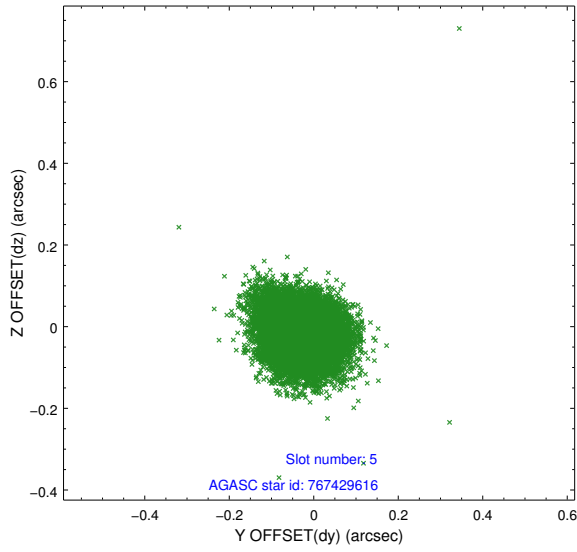
### 2.4.1 Slot 3



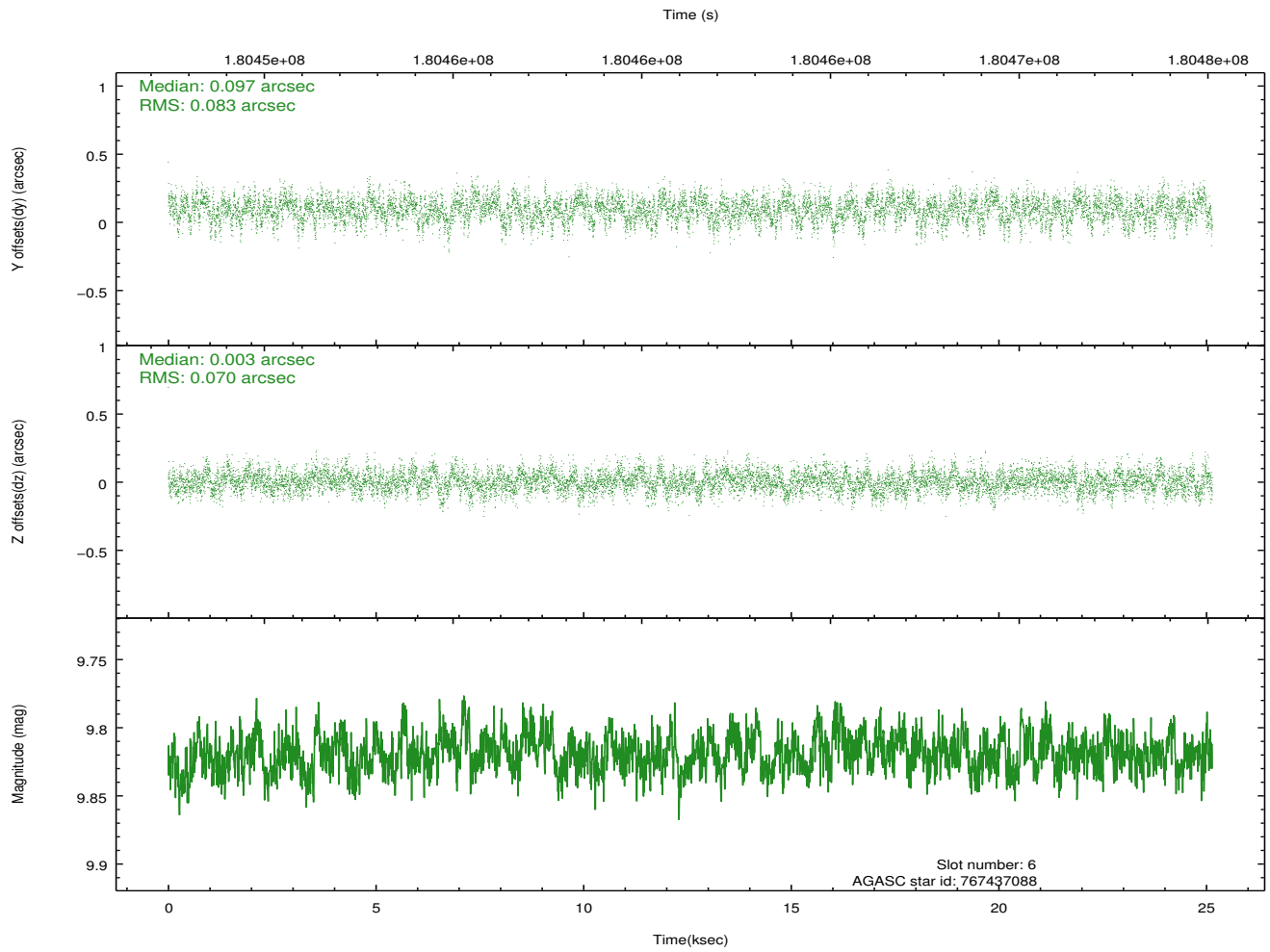
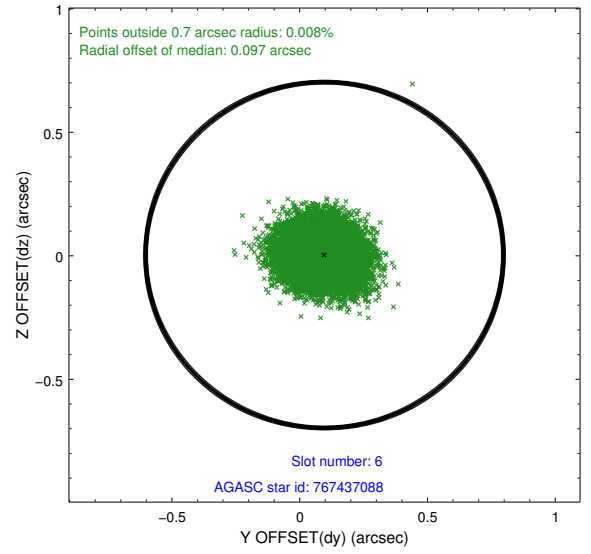
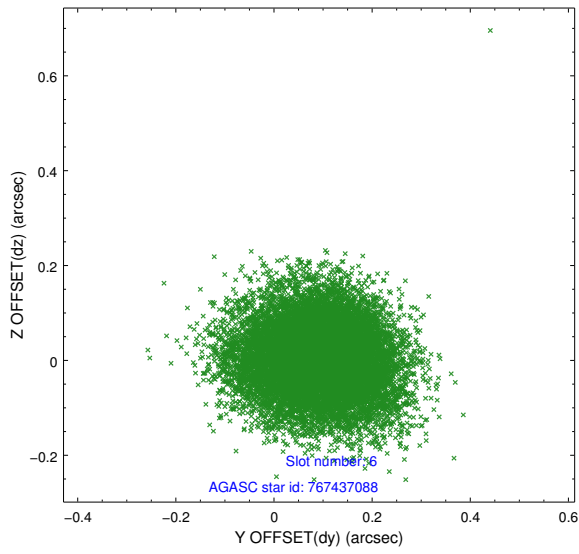
### 2.4.2 Slot 4



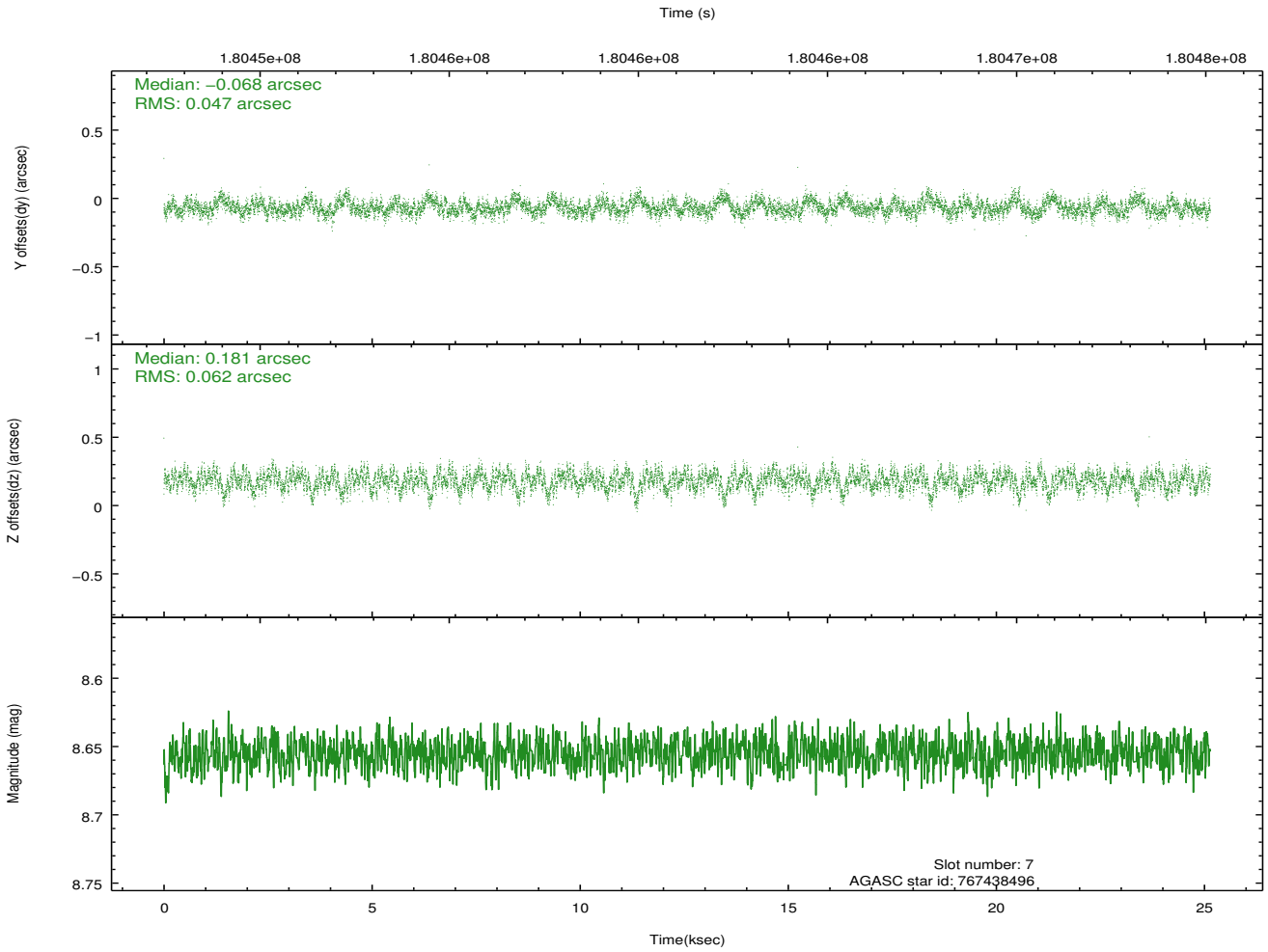
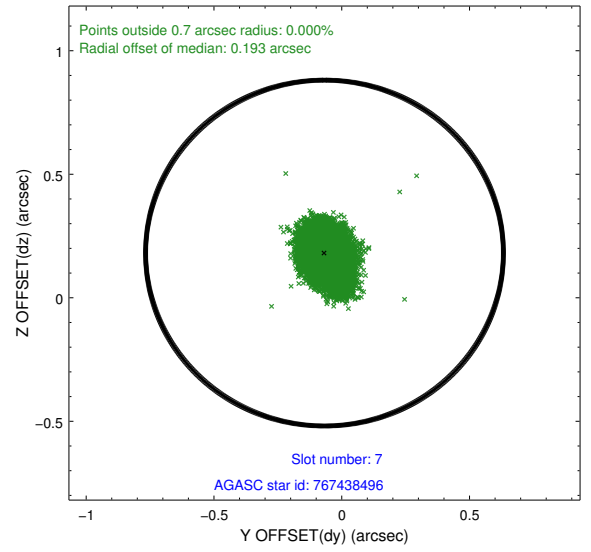
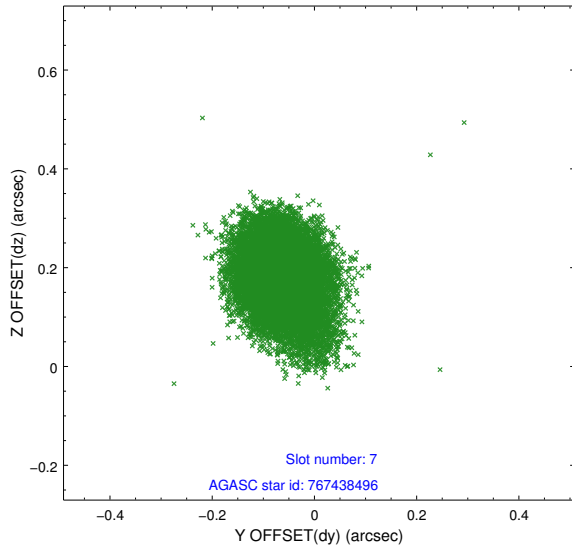
### 2.4.3 Slot 5



### 2.4.4 Slot 6

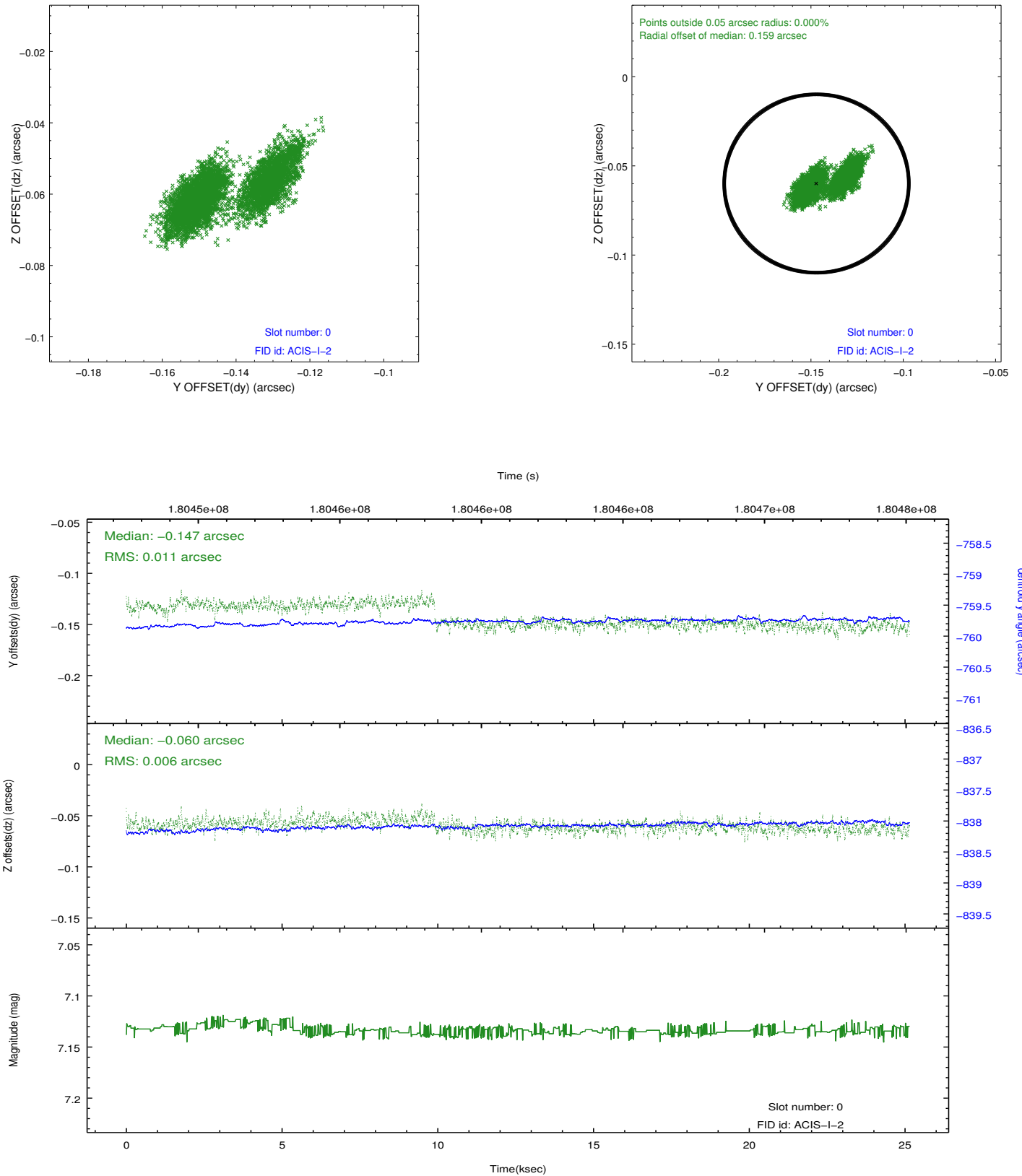


### 2.4.5 Slot 7

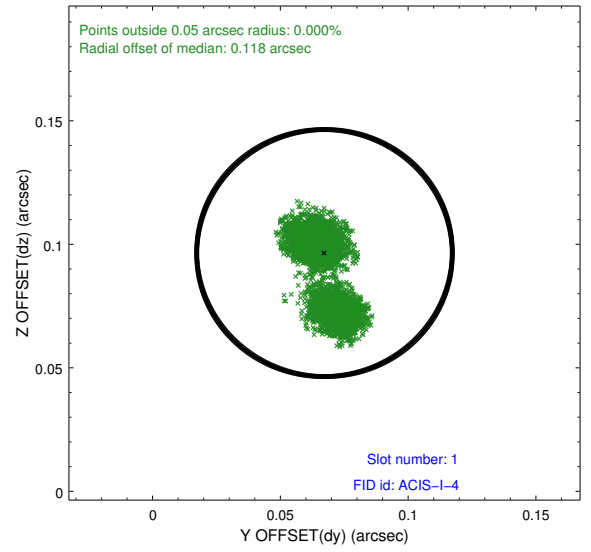
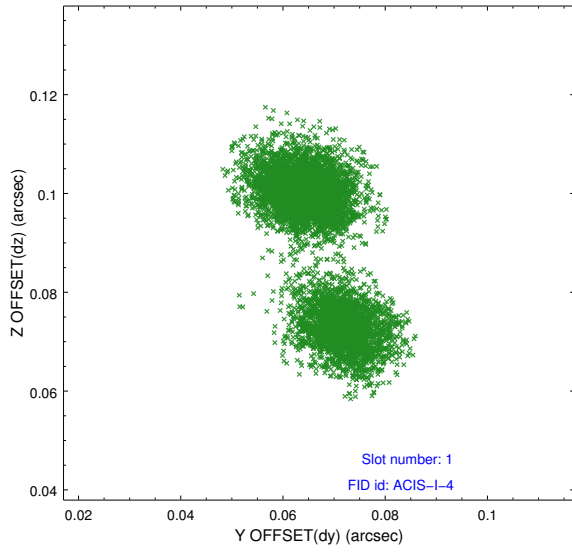


## 2.5 FID Slots

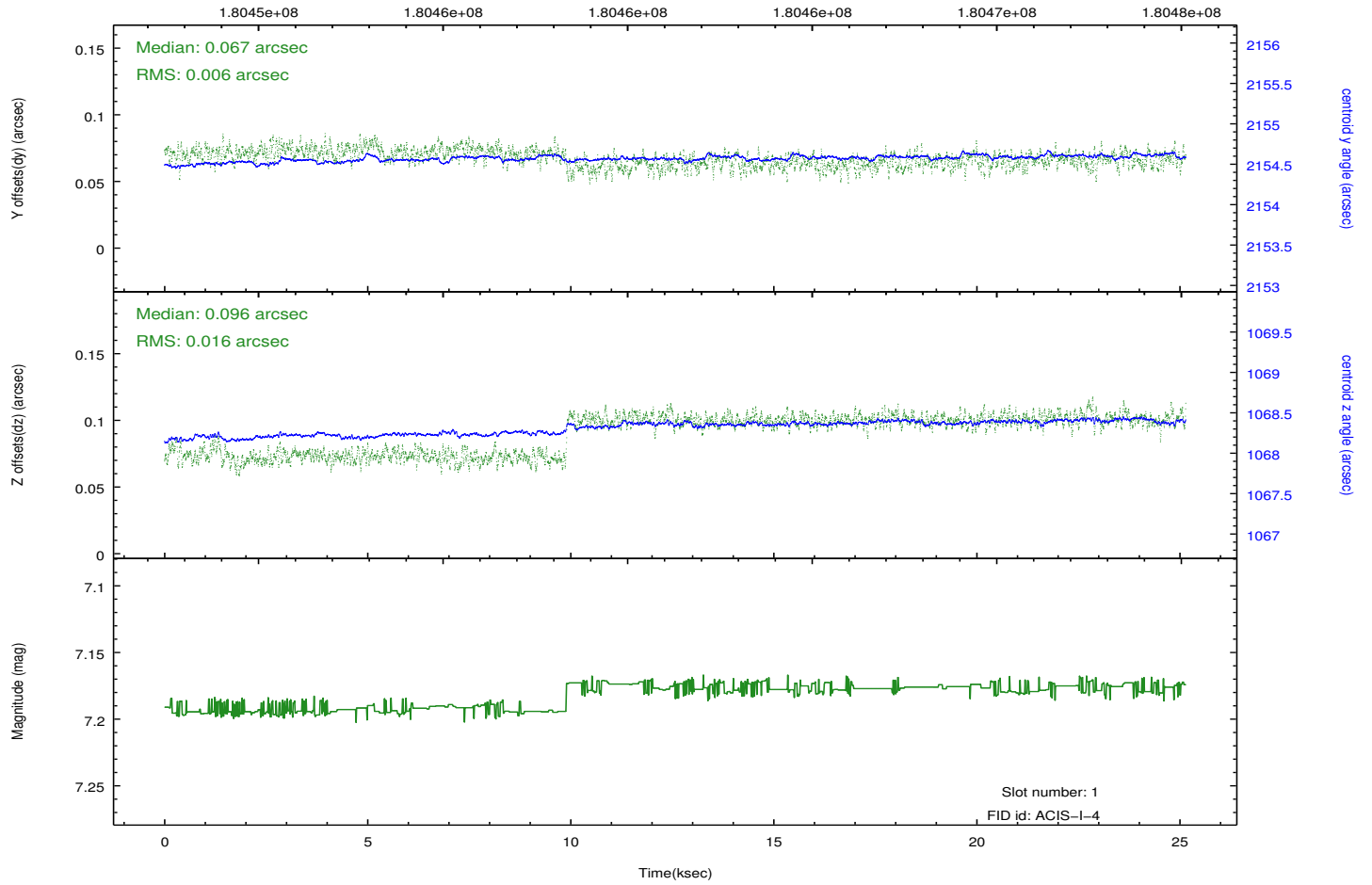
### 2.5.1 Slot 0



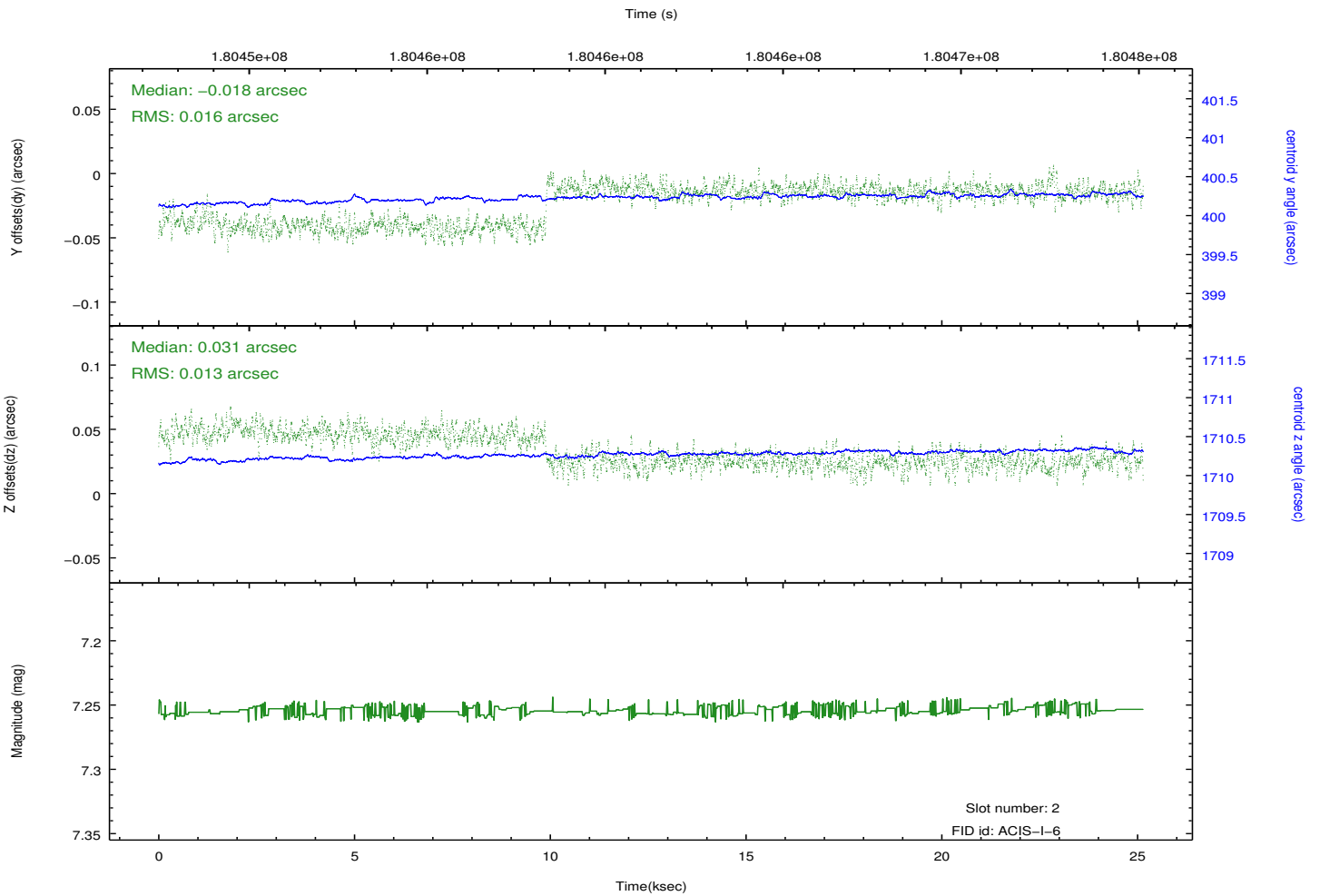
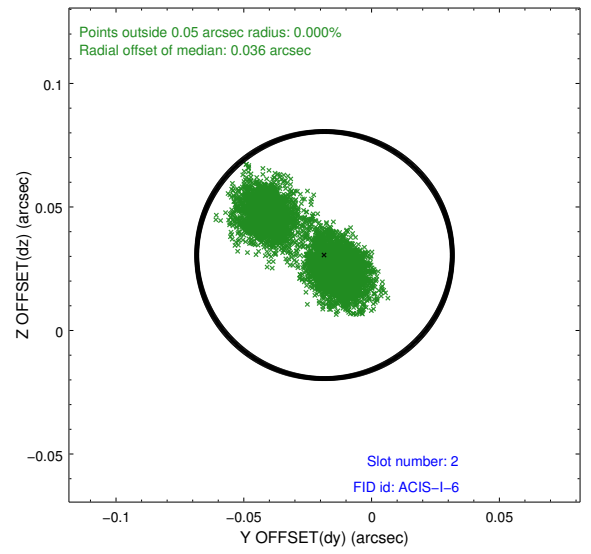
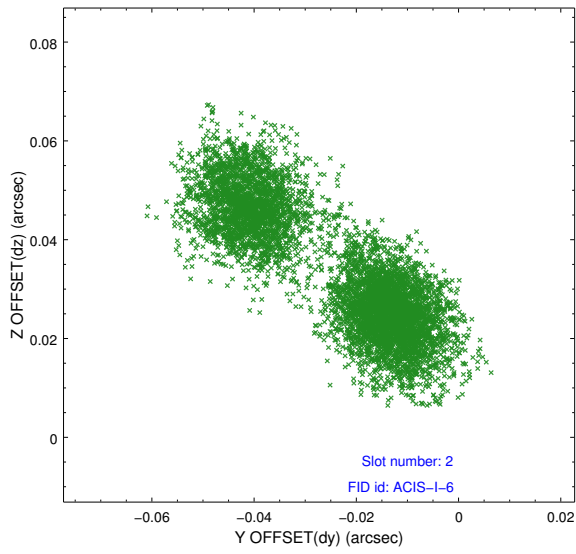
## 2.5.2 Slot 1



Time (s)



### 2.5.3 Slot 2



# A Summary

## A.1 Status

V&V Scientist	Beth Sundheim
V&V Date (YYYY-MM-DD)	2012.11.26
V&V Edition	1
V&V Disposition and Status	OK
V&V Charge Time	25.146

## A.2 Comments