

# V&V Reference Report

## L2 ASCDS Version : 8.4.5

Observation 4172 - L2 Version 3  
Chandra X-Ray Center

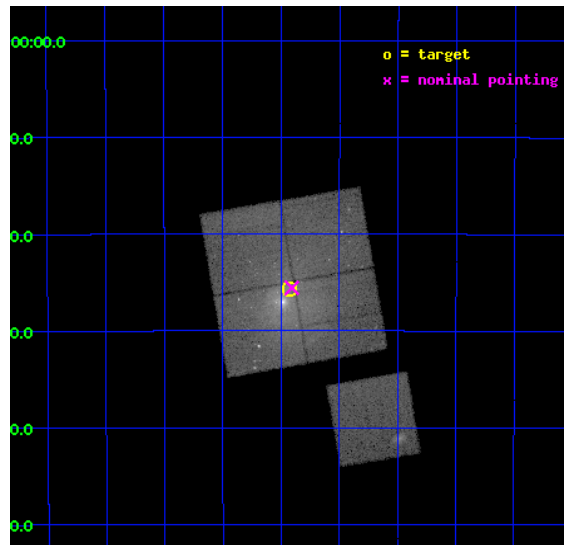
L2 Processing Date : Oct 28 2012

## Contents

<b>1</b>	<b>Front</b>	<b>2</b>
<b>2</b>	<b>OBI</b>	<b>3</b>
2.1	OBI . . . . .	3
2.1.1	Images . . . . .	3
2.1.2	Bias . . . . .	3
2.1.3	Parameters . . . . .	4
2.1.4	Events . . . . .	4
2.2	Compared Parameters . . . . .	5
2.3	Aspect . . . . .	6
2.4	Star Slots . . . . .	9
2.4.1	Slot 3 . . . . .	9
2.4.2	Slot 4 . . . . .	10
2.4.3	Slot 5 . . . . .	11
2.4.4	Slot 6 . . . . .	12
2.4.5	Slot 7 . . . . .	13
2.5	FID Slots . . . . .	14
2.5.1	Slot 0 . . . . .	14
2.5.2	Slot 1 . . . . .	15
2.5.3	Slot 2 . . . . .	16
<b>A</b>	<b>Summary</b>	<b>17</b>
A.1	Status . . . . .	17
A.2	Comments . . . . .	17

# 1 Front

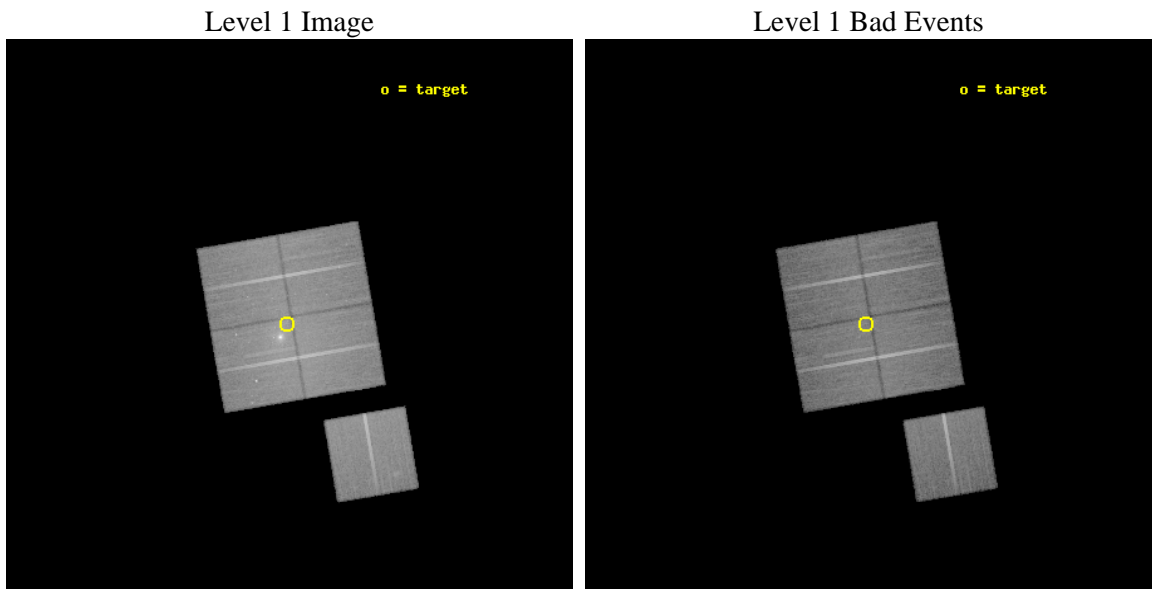
seq_num	800328	Sequence number
obs_id	4172	Observation id
title	SURVEYING THE FORNAX CLUSTER OF GALAXIES	Proposal title
observer	Dr Caleb Scharf	Principal investigator
object	FORNAX CLUSTER	Source name
dtcycle	0	&#160
cycle	P	events from which exps? Prim/Second/Both
ra_targ	54.6065	Observer's specified target RA [deg]
dec_targ	-35.4285	Observer's specified target Dec [deg]
ra_nom	54.601738634398	Nominal RA [deg]
dec_nom	-35.425986298214	Nominal Dec [deg]
roll_nom	170.205923908	Nominal Roll [deg]
revision	3	Processing version of data
ontime	45092.313141614	Sum of GTIs [s]
livetime	44503.148873941	Livetime [s]
ontime0	45092.313062012	Sum of GTIs [s]
ontime1	45095.45415172	Sum of GTIs [s]
ontime2	45079.749320745	Sum of GTIs [s]
ontime3	45092.313141614	Sum of GTIs [s]
ontime6	45092.31318143	Sum of GTIs [s]
l2events	221289	Number of level 2 events



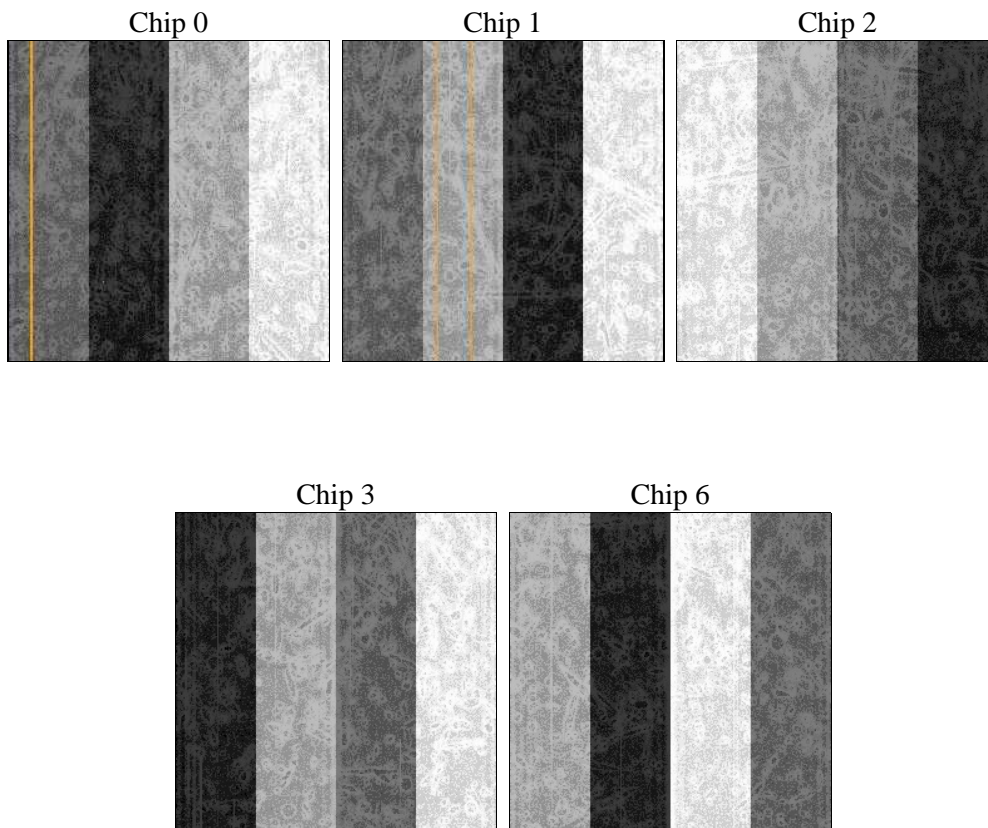
## 2 OBI

### 2.1 OBI

#### 2.1.1 Images



#### 2.1.2 Bias



### 2.1.3 Parameters

obi_num	0	Obi number	sched_exp_time	45000.000000	[s] Scheduled observation exposure time
ascdsver	8.4.5	Processing system revision	ontime	45092.313141614	Sum of GTIs [s]
caldbver	4.5.2	&#160	ontime0	45092.313062012	Sum of GTIs [s]
date	2012-10-28T14:12:18	Date and time of file creation	ontime1	45095.45415172	Sum of GTIs [s]
revision	3	Processing version of data	ontime2	45079.749320745	Sum of GTIs [s]
			ontime3	45092.313141614	Sum of GTIs [s]
			ontime6	45092.31318143	Sum of GTIs [s]
			l1events	1377389	Number of level 1 events

### 2.1.4 Events

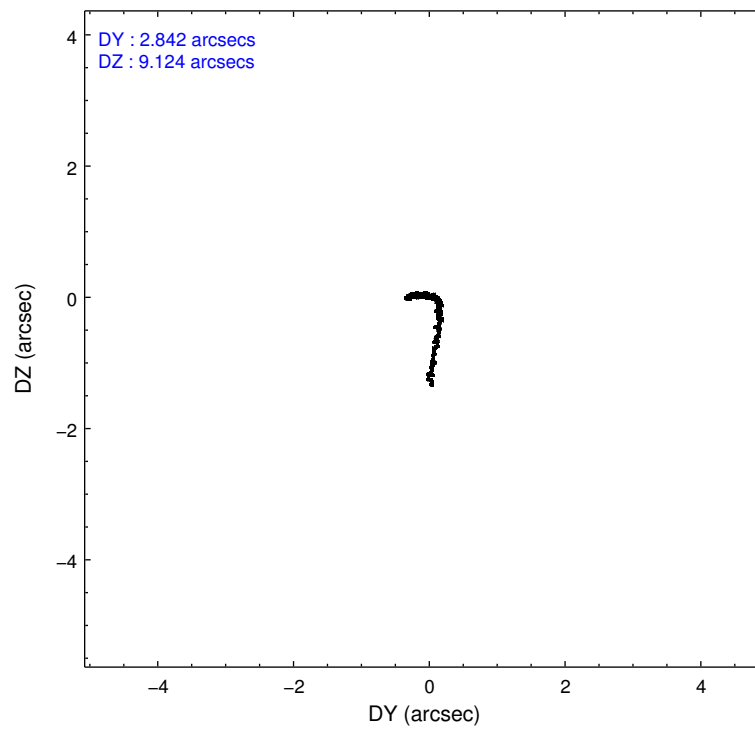
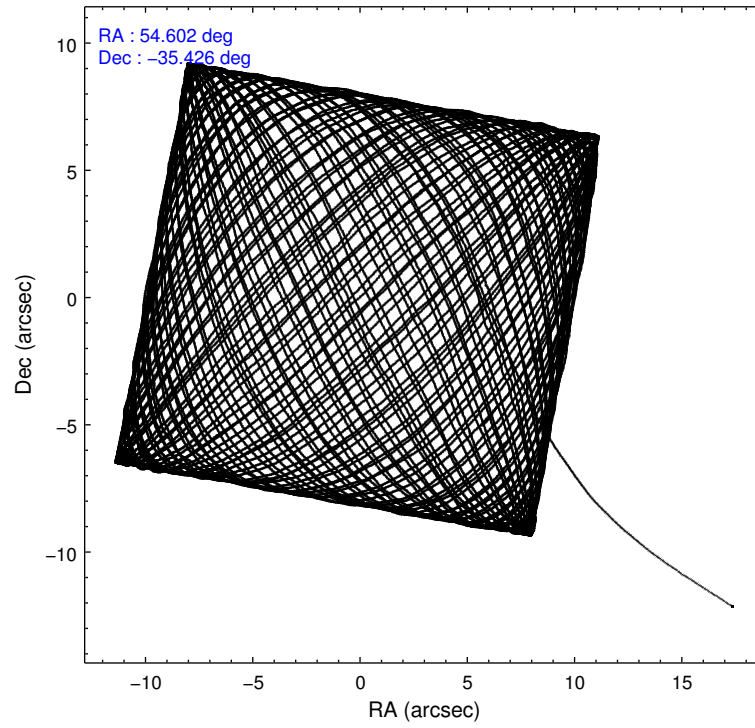
	ccd 0	ccd 1	ccd 2	ccd 3	ccd 6
level 1 events	256430	258113	288557	318179	256110
rejected events	212676	212317	241138	237711	225536
rejected %	82%	82%	83%	74%	88%

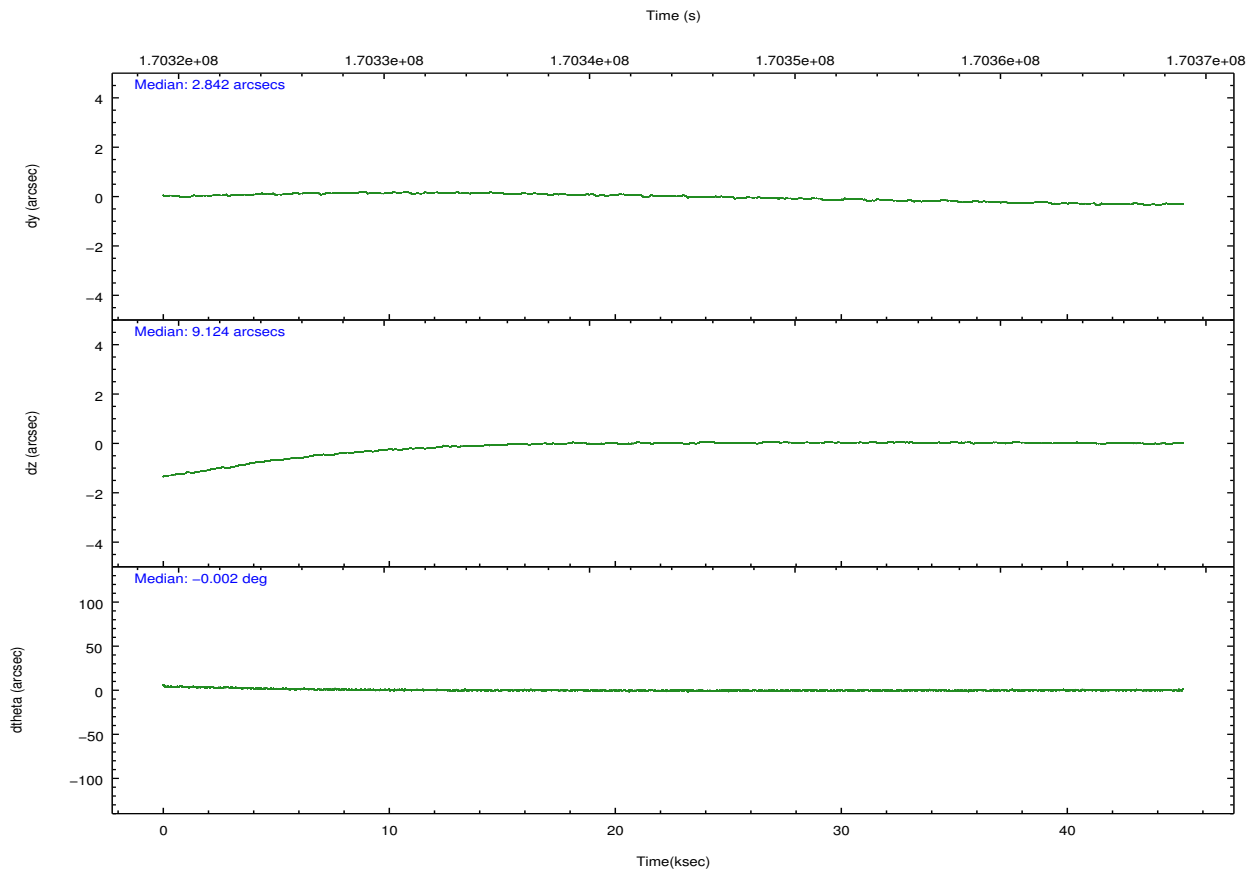
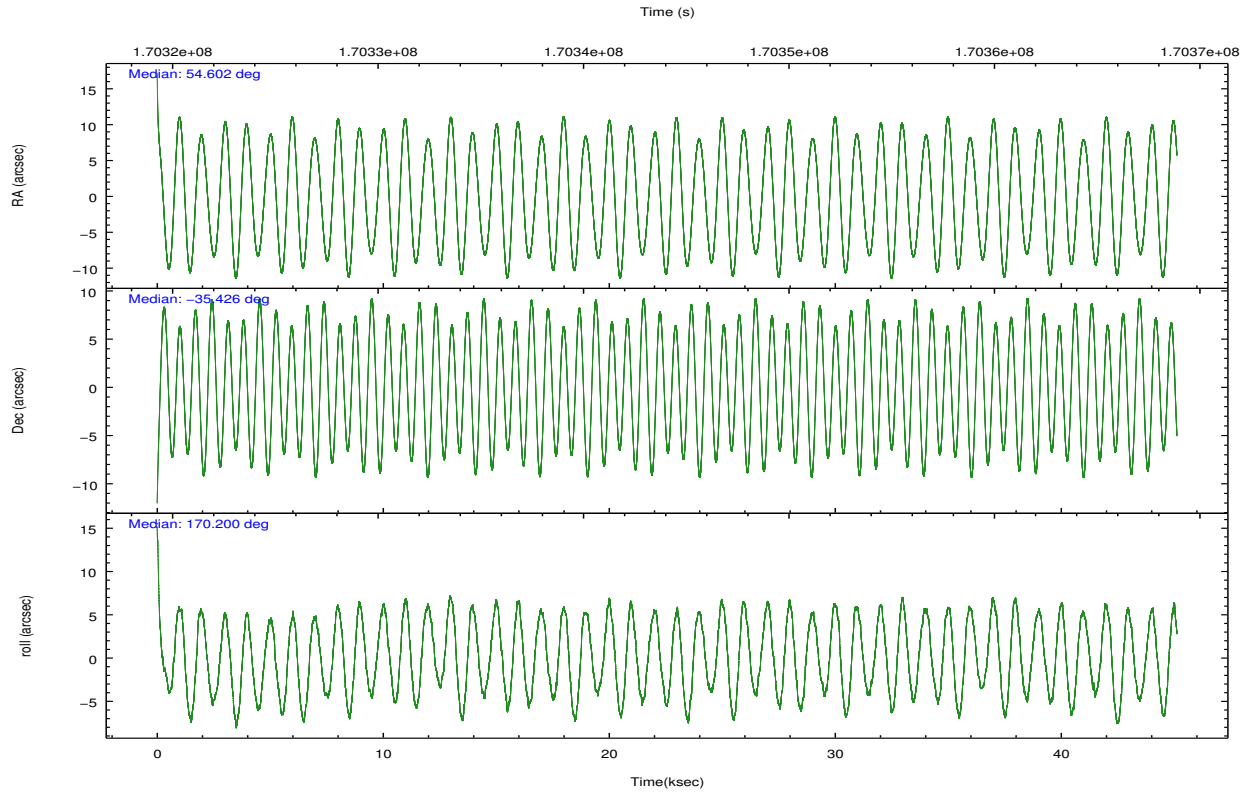
	ccd 0	ccd 1	ccd 2	ccd 3	ccd 6
grade 0 events	25736	26520	29723	58678	14194
	10%	10%	10%	18%	5%
grade 1 events	186	166	246	358	123
	0%	0%	0%	0%	0%
grade 2 events	7436	7586	7711	9562	5806
	2%	2%	2%	3%	2%
grade 3 events	3475	3660	3217	4078	3151
	1%	1%	1%	1%	1%
grade 4 events	3163	3575	3211	4064	3043
	1%	1%	1%	1%	1%
grade 5 events	8682	9482	8270	10100	9790
	3%	3%	2%	3%	3%
grade 6 events	5042	5755	4725	5338	5470
	1%	2%	1%	1%	2%
grade 7 events	202710	201369	231454	226001	214533
	79%	78%	80%	71%	83%

## 2.2 Compared Parameters

Parameter	Planned	Actual	Parameter	Planned	Actual
Instrument	ACIS	ACIS	Obspar format version number	7	7
Detector	ACIS-01236	ACIS-01236	Obspar file type	PREDICTED	ACTUAL
Grating	NONE	NONE	Obspar update status	NONE	UPDATED
Data mode	VFAINT	VFAINT	Number of optional ACIS chips dropped	0	0
Observation mode	POINTING	POINTING	On-chip summing requested	N	N
[deg] Pointing RA	54.633203	54.6017386343984	Subarray requested	NONE	NONE
[deg] Pointing Dec	-35.416429	-35.42598629821448	Alternating exposures requested	N	N
[deg] Pointing Roll	170.015475	170.2059239079974	[s] Primary exposure time	0.000000	3.1
[mm] SIM focus pos	-0.782348	-0.7809083437167272			
[mm] SIM defocus	0	0.001439871863259334			
[mm] SIM translation stage pos	-233.592463	-233.5874344608287			
[mm] SIM translation stage offset	0	-0.005018542100998502			
[s] Observation start time (MET)	170321619.184000	170319562.34585			
Observation start date	2003-05-26T07:32:35	2003-05-26T06:59:22			
[s] Observation end time (MET)	170366619.184000	170366753.86035			
Observation end date	2003-05-26T20:02:35	2003-05-26T20:05:53			
Read mode	TIMED	TIMED			

## 2.3 Aspect



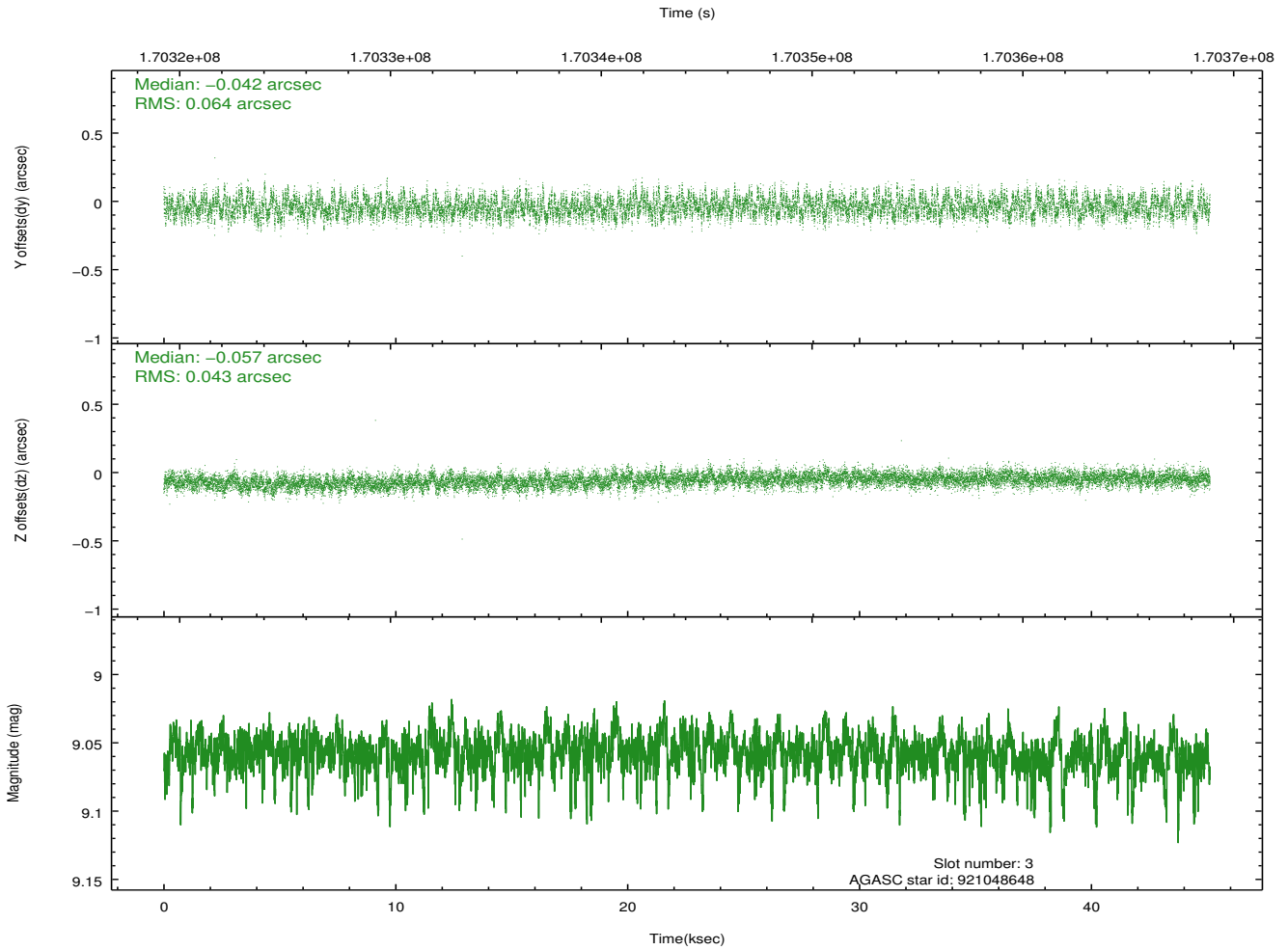
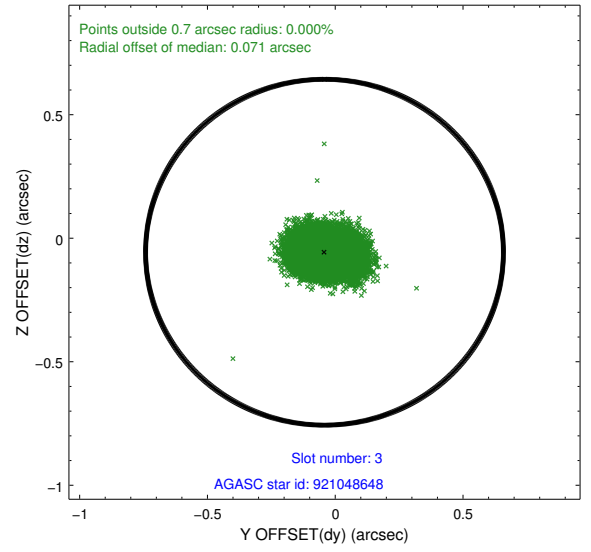
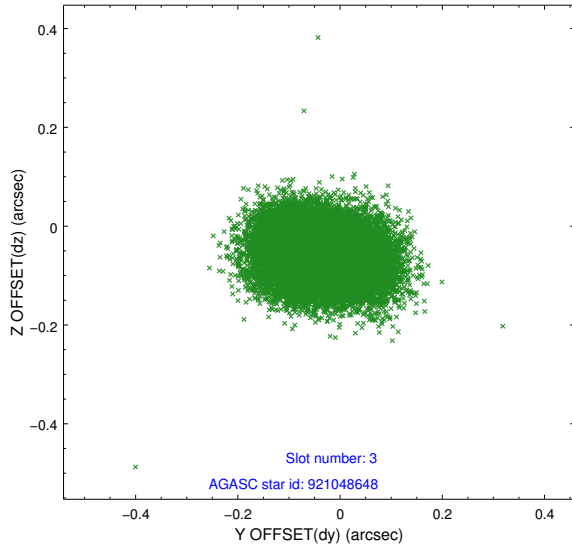


### Slot Statistics

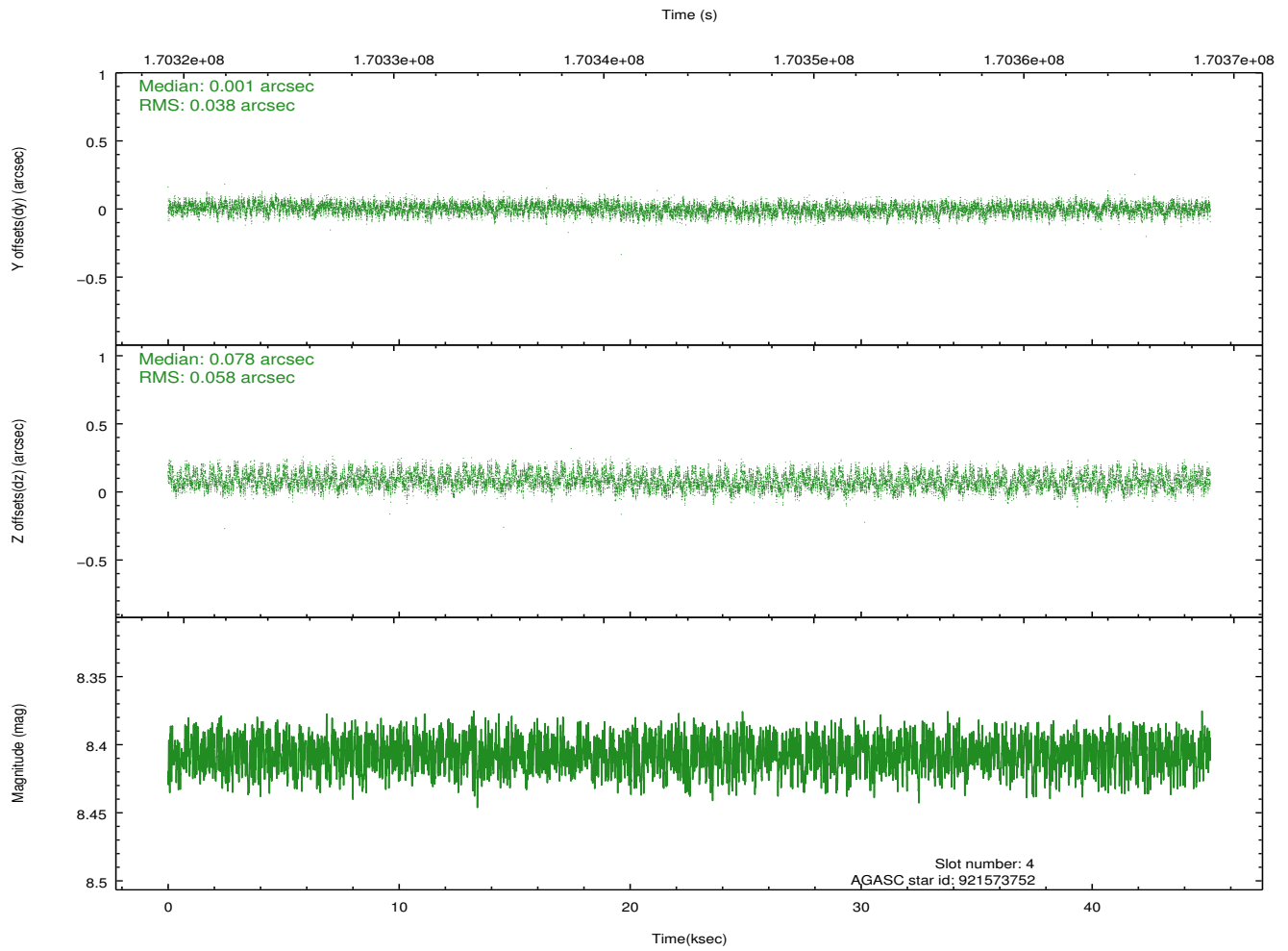
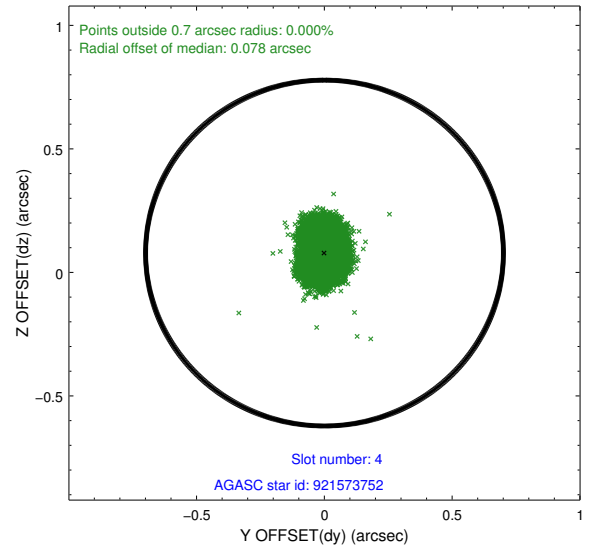
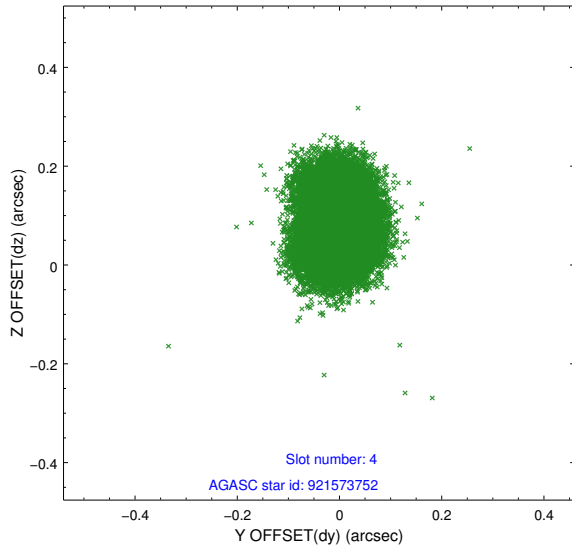
slot	status	id	mag	n_pts	med_dy	med_dz	dr1	dr2	ra	dec	mean_y	mean_z
0	FID	ACIS-I-1	7.24	10989	-0.022	0.054	0.011	0.022	0.000000	0.000000	936.97	-832.34
1	FID	ACIS-I-5	7.23	10988	-0.081	0.026	0.011	0.023	0.000000	0.000000	-1811.21	1065.11
2	FID	ACIS-I-6	7.25	10989	0.013	-0.010	0.013	0.027	0.000000	0.000000	402.54	1709.58
3	GUIDE	921048648	9.06	21982	-0.042	-0.057	0.082	0.133	53.884610	-35.870023	1866.09	1995.26
4	GUIDE	921573752	8.41	21988	0.001	0.078	0.074	0.118	55.297577	-34.906150	-1614.02	-2142.62
5	GUIDE	921965624	8.63	21979	0.054	-0.111	0.071	0.114	54.900706	-35.940077	-1095.03	1722.35
6	GUIDE	921572720	8.74	21978	-0.025	0.116	0.074	0.122	54.127171	-34.789534	1864.39	-1958.93
7	GUIDE	921970112	9.57	21962	0.013	-0.030	0.092	0.154	54.291262	-35.695592	810.13	1165.01

## 2.4 Star Slots

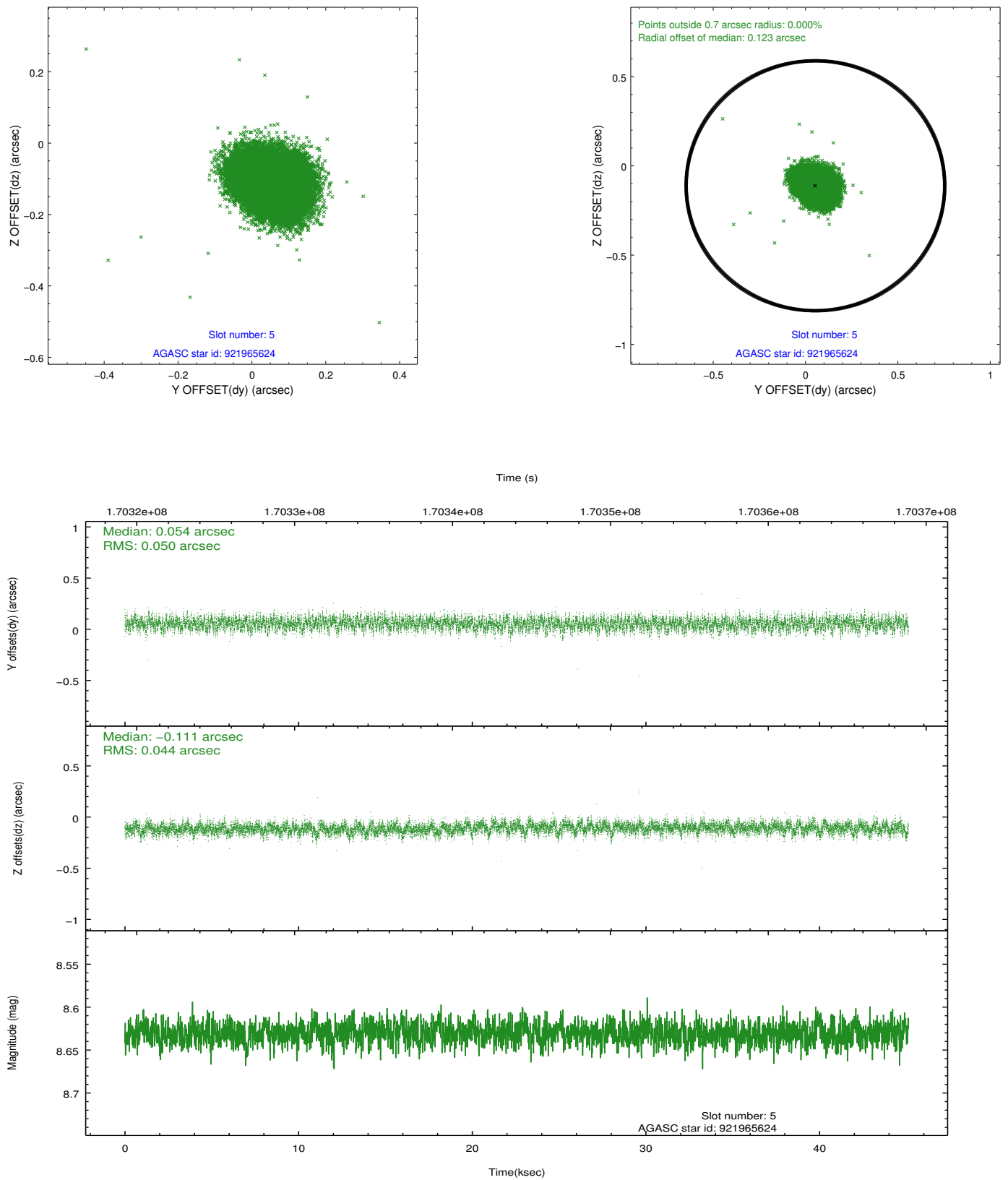
### 2.4.1 Slot 3



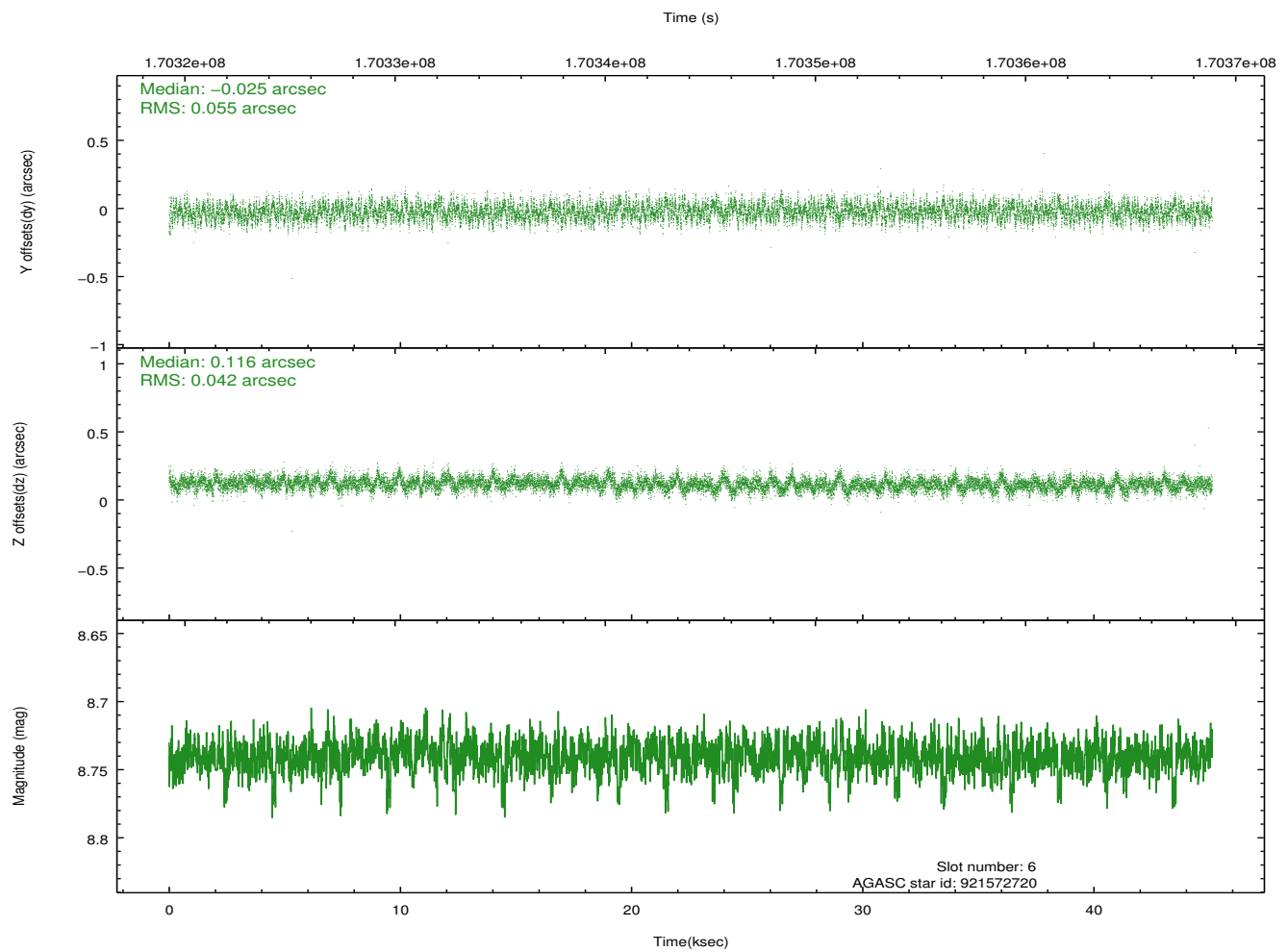
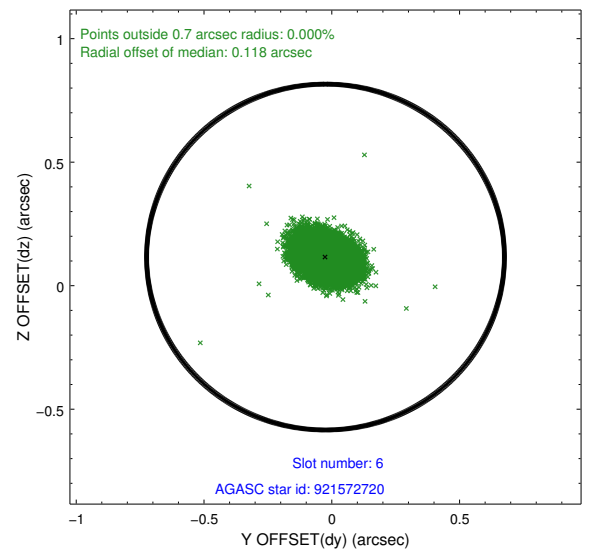
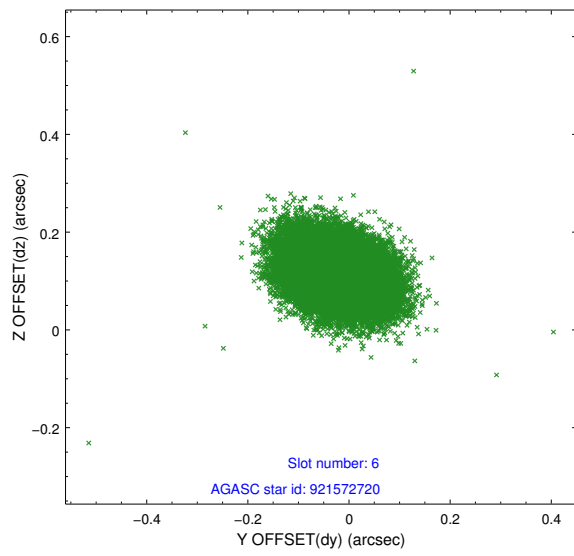
### 2.4.2 Slot 4



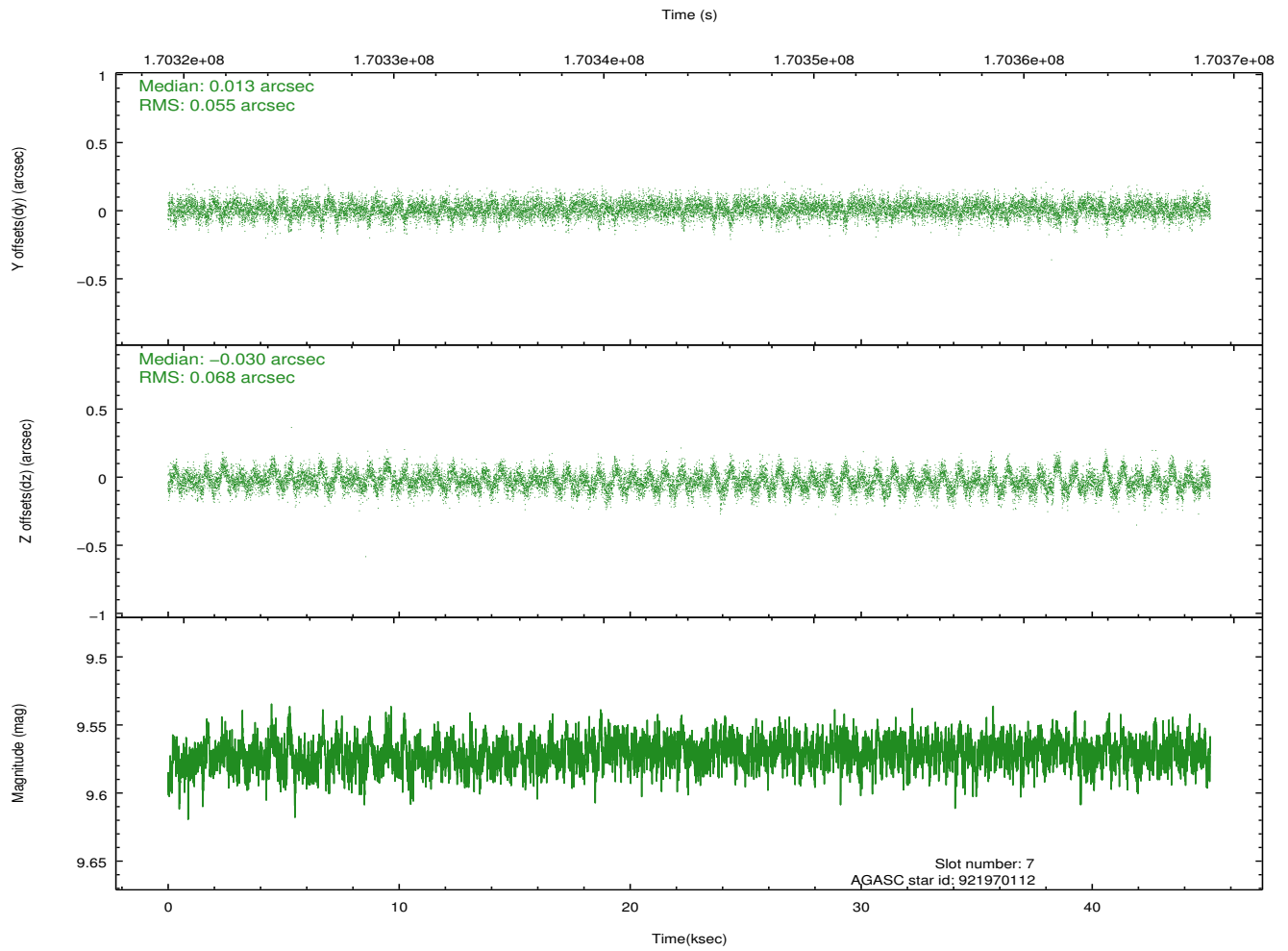
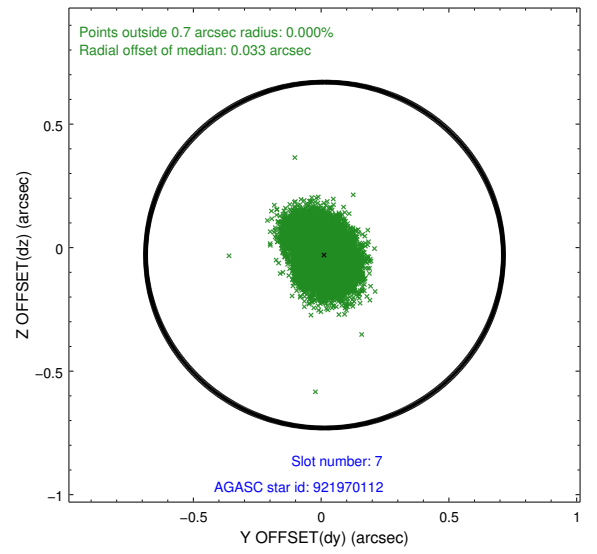
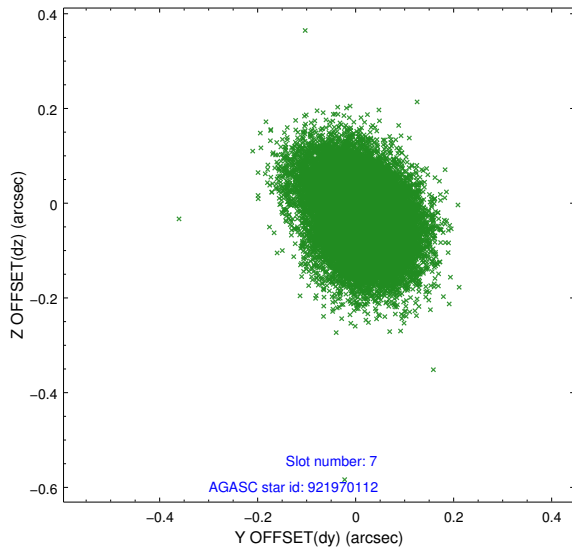
### 2.4.3 Slot 5



## 2.4.4 Slot 6

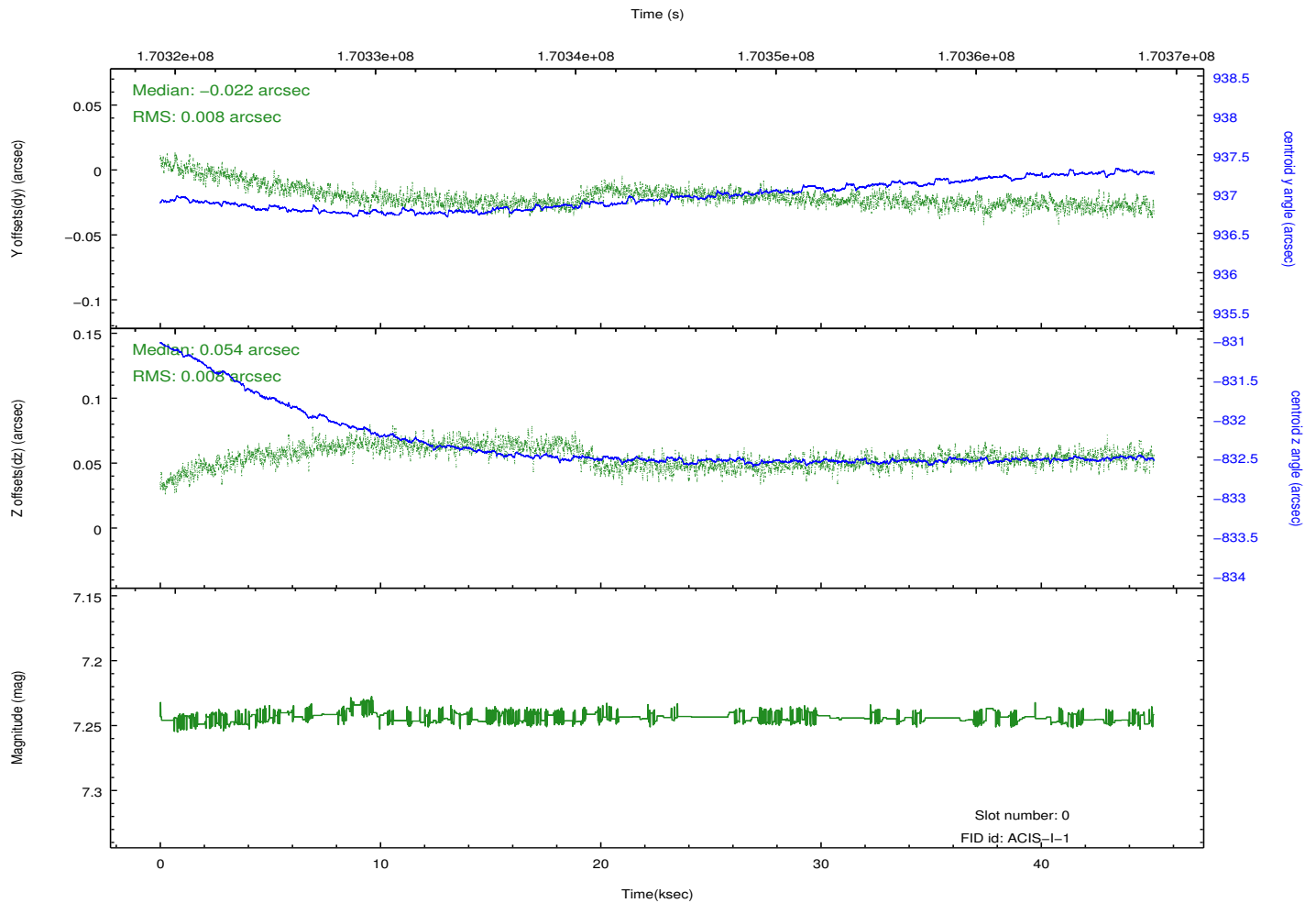
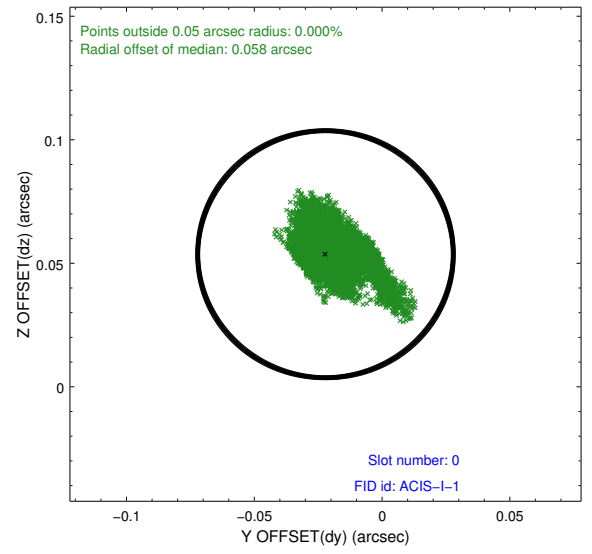
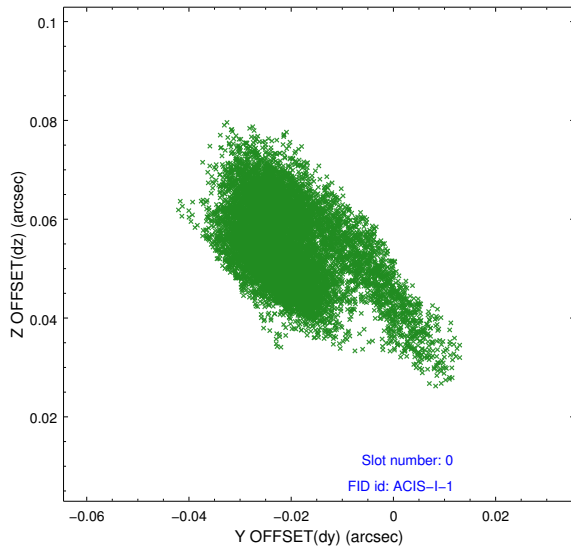


### 2.4.5 Slot 7

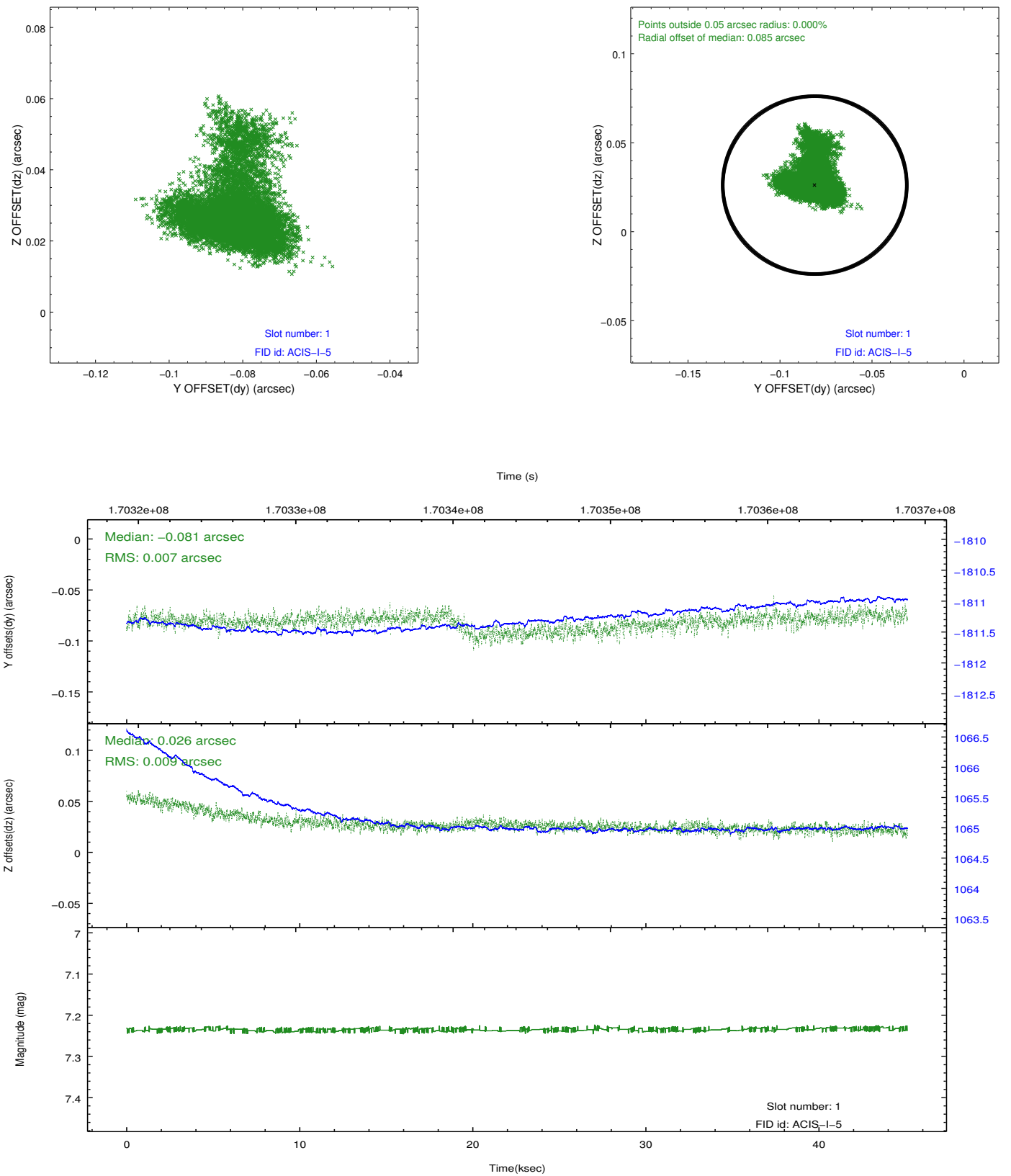


## 2.5 FID Slots

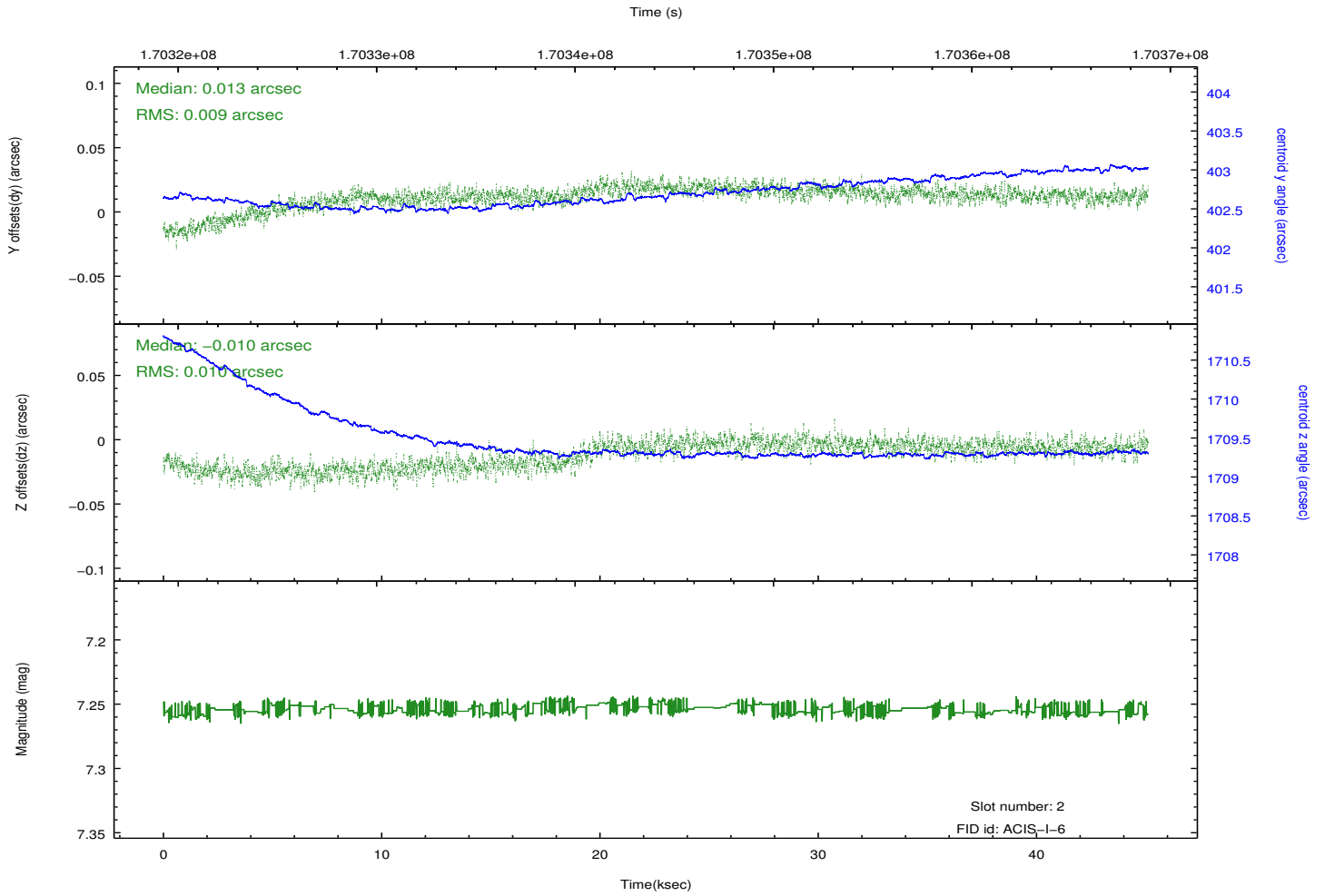
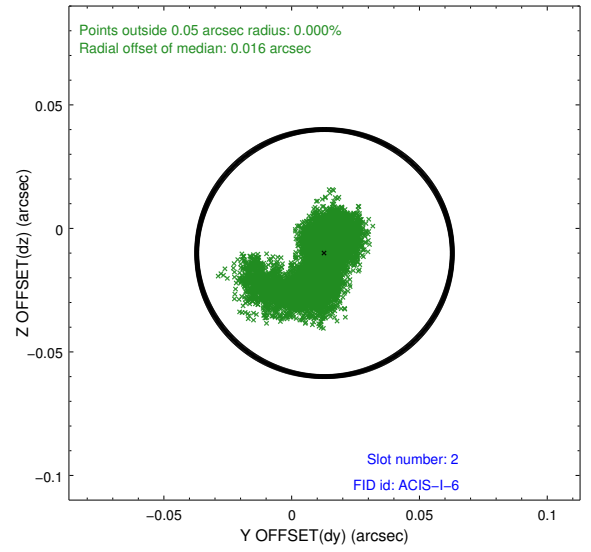
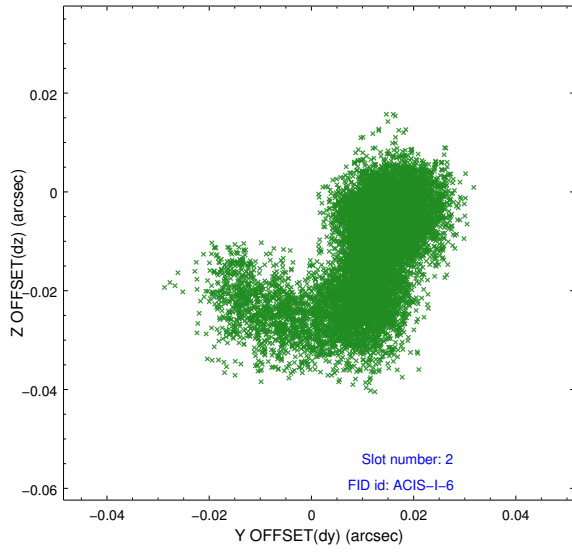
### 2.5.1 Slot 0



## 2.5.2 Slot 1



### 2.5.3 Slot 2



# A Summary

## A.1 Status

V&V Scientist	Jen Lauer
V&V Date (YYYY-MM-DD)	2012.11.15
V&V Edition	1
V&V Disposition and Status	OK
V&V Charge Time	45.092

## A.2 Comments