

V&V Reference Report

L2 ASCDS Version : 8.4.5

Observation 4192 - L2 Version 6
Chandra X-Ray Center

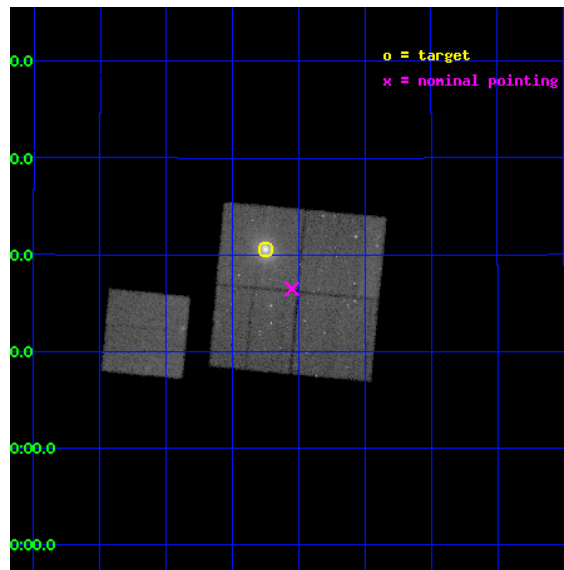
L2 Processing Date : Feb 7 2013

Contents

1	Front	2
2	OBI	3
2.1	OBI	3
2.1.1	Images	3
2.1.2	Bias	3
2.1.3	Parameters	4
2.1.4	Events	4
2.2	Compared Parameters	5
2.3	Aspect	6
2.4	Star Slots	9
2.4.1	Slot 3	9
2.4.2	Slot 4	10
2.4.3	Slot 6	11
2.5	FID Slots	12
2.5.1	Slot 0	12
2.5.2	Slot 1	13
2.5.3	Slot 2	14
A	Summary	15
A.1	Status	15
A.2	Comments	15

1 Front

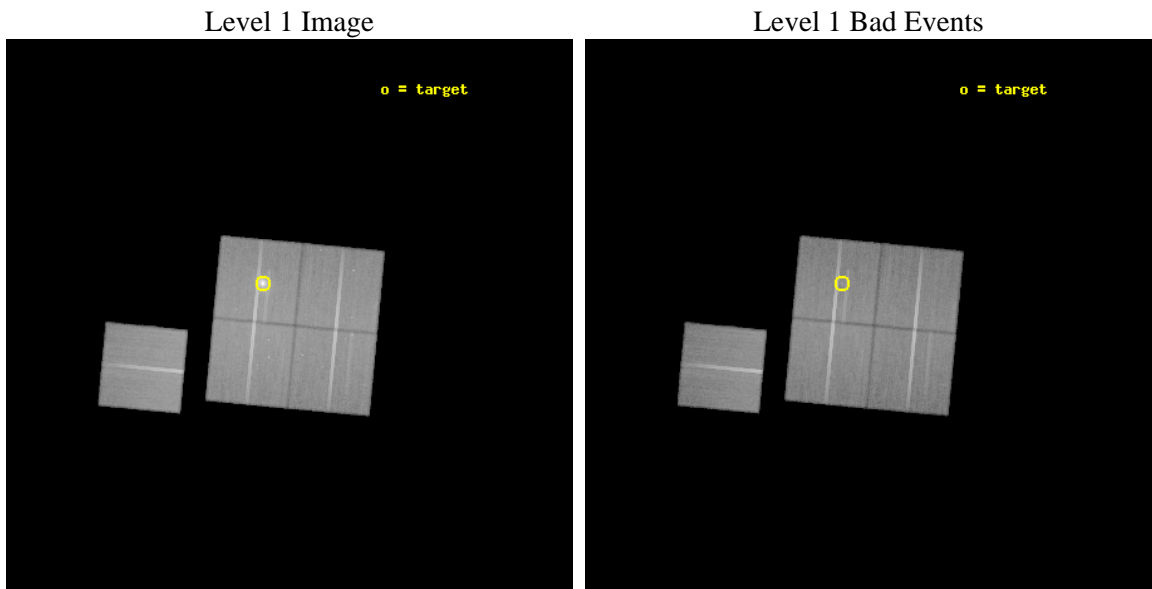
seq_num	800348	Sequence number
obs_id	4192	Observation id
title	STUDY OF A COLD FRONT IN A MASSIVE COOLING FLOW CLUSTER OF GALAXIES WITH STRONG LENSING	Proposal title
observer	Dr. Pasquale Mazzotta	Principal investigator
object	MS1455.0+2232	Source name
dtcycle	0	
cycle	P	events from which exps? Prim/Second/Both
ra_targ	224.3125	Observer's specified target RA [deg]
dec_targ	22.341944	Observer's specified target Dec [deg]
ra_nom	224.262853658	Nominal RA [deg]
dec_nom	22.274895710933	Nominal Dec [deg]
roll_nom	275.39589191631	Nominal Roll [deg]
revision	6	Processing version of data
ontime	93098.950527757	Sum of GTIs [s]
livetime	91882.544200662	Livetime [s]
ontime0	93117.673219115	Sum of GTIs [s]
ontime1	93105.150428087	Sum of GTIs [s]
ontime2	93114.614328861	Sum of GTIs [s]
ontime3	93098.950527757	Sum of GTIs [s]
ontime6	93111.350228757	Sum of GTIs [s]
l2events	280307	Number of level 2 events



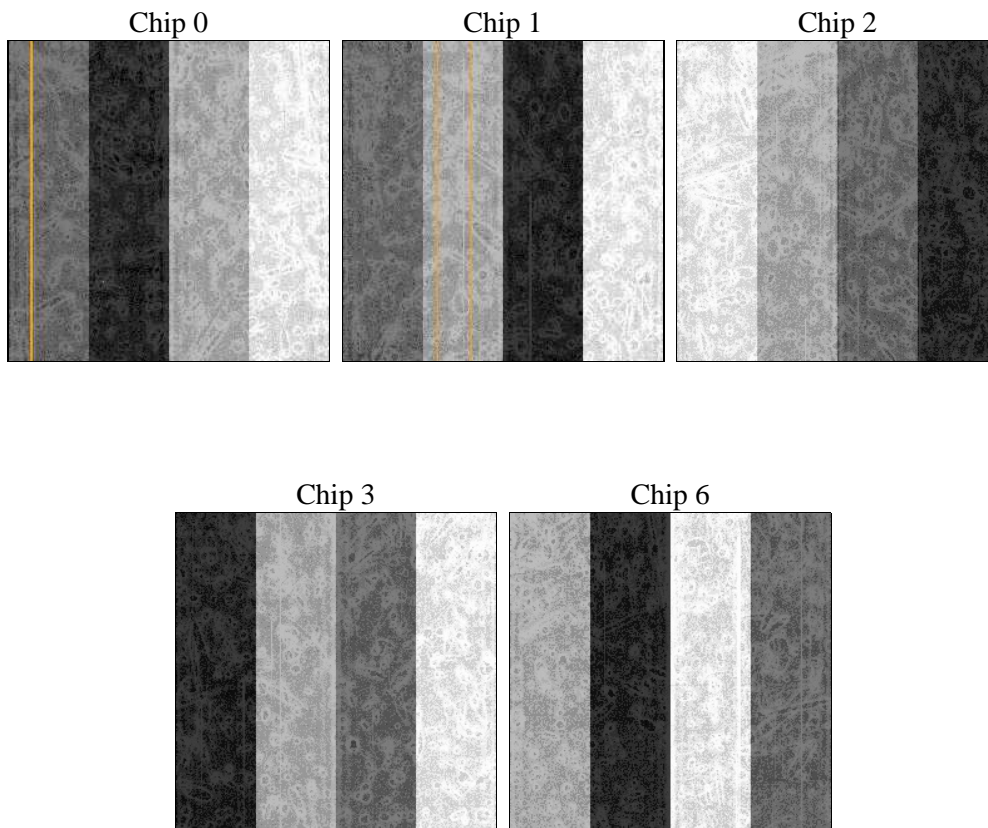
2 OBI

2.1 OBI

2.1.1 Images



2.1.2 Bias



2.1.3 Parameters

obi_num	0	Obi number	sched_exp_time	93000.000000	[s] Scheduled observation exposure time
ascdsver	8.5.1.1	Processing system revision	ontime	93098.950527757	Sum of GTIs [s]
caldsver	4.5.5	 	ontime0	93117.673219115	Sum of GTIs [s]
date	2013-02-06T08:10:37	Date and time of file creation	ontime1	93105.150428087	Sum of GTIs [s]
revision	6	Processing version of data	ontime2	93114.614328861	Sum of GTIs [s]
			ontime3	93098.950527757	Sum of GTIs [s]
			ontime6	93111.350228757	Sum of GTIs [s]
			l1events	2467898	Number of level 1 events

2.1.4 Events

	ccd 0	ccd 1	ccd 2	ccd 3	ccd 6
level 1 events	450283	456116	510882	560384	490233
rejected events	400398	399476	460601	443077	439538
rejected %	88%	87%	90%	79%	89%

	ccd 0	ccd 1	ccd 2	ccd 3	ccd 6
grade 0 events	17970	22209	19777	75760	18319
	3%	4%	3%	13%	3%
grade 1 events	236	229	232	569	224
	0%	0%	0%	0%	0%
grade 2 events	11457	11605	11115	16158	10537
	2%	2%	2%	2%	2%
grade 3 events	5908	6082	5376	7478	5679
	1%	1%	1%	1%	1%
grade 4 events	5212	6040	5335	7413	5631
	1%	1%	1%	1%	1%
grade 5 events	17009	17922	16396	19248	18885
	3%	3%	3%	3%	3%
grade 6 events	9338	10705	8682	10504	10532
	2%	2%	1%	1%	2%
grade 7 events	383153	381324	443969	423254	420426
	85%	83%	86%	75%	85%

2.2 Compared Parameters

Parameter	Planned	Actual	Parameter	Planned	Actual
Instrument	ACIS	ACIS	Obspar format version number	7	7
Detector	ACIS-01236	ACIS-01236	Obspar file type	PREDICTED	ACTUAL
Grating	NONE	NONE	Obspar update status	NONE	UPDATED
Data mode	VFAINT	VFAINT	Number of optional ACIS chips dropped	0	0
Observation mode	POINTING	POINTING	On-chip summing requested	N	N
[deg] Pointing RA	224.245615	224.2628536579962	Subarray requested	NONE	NONE
[deg] Pointing Dec	22.297172	22.27489571093278	Alternating exposures requested	N	N
[deg] Pointing Roll	275.193731	275.3958919163083	[s] Primary exposure time	0.000000	3.1
[mm] SIM focus pos	-0.782348	-0.7809083437167272			
[mm] SIM defocus	0	0.001439871863259334			
[mm] SIM translation stage pos	-233.592463	-233.5874344608287			
[mm] SIM translation stage offset	0	-0.005018542100998502			
[s] Observation start time (MET)	179173392.184000	179172362.16058			
Observation start date	2003-09-05T18:22:08	2003-09-05T18:06:02			
[s] Observation end time (MET)	179266392.184000	179267630.27716			
Observation end date	2003-09-06T20:12:08	2003-09-06T20:33:50			
Read mode	TIMED	TIMED			

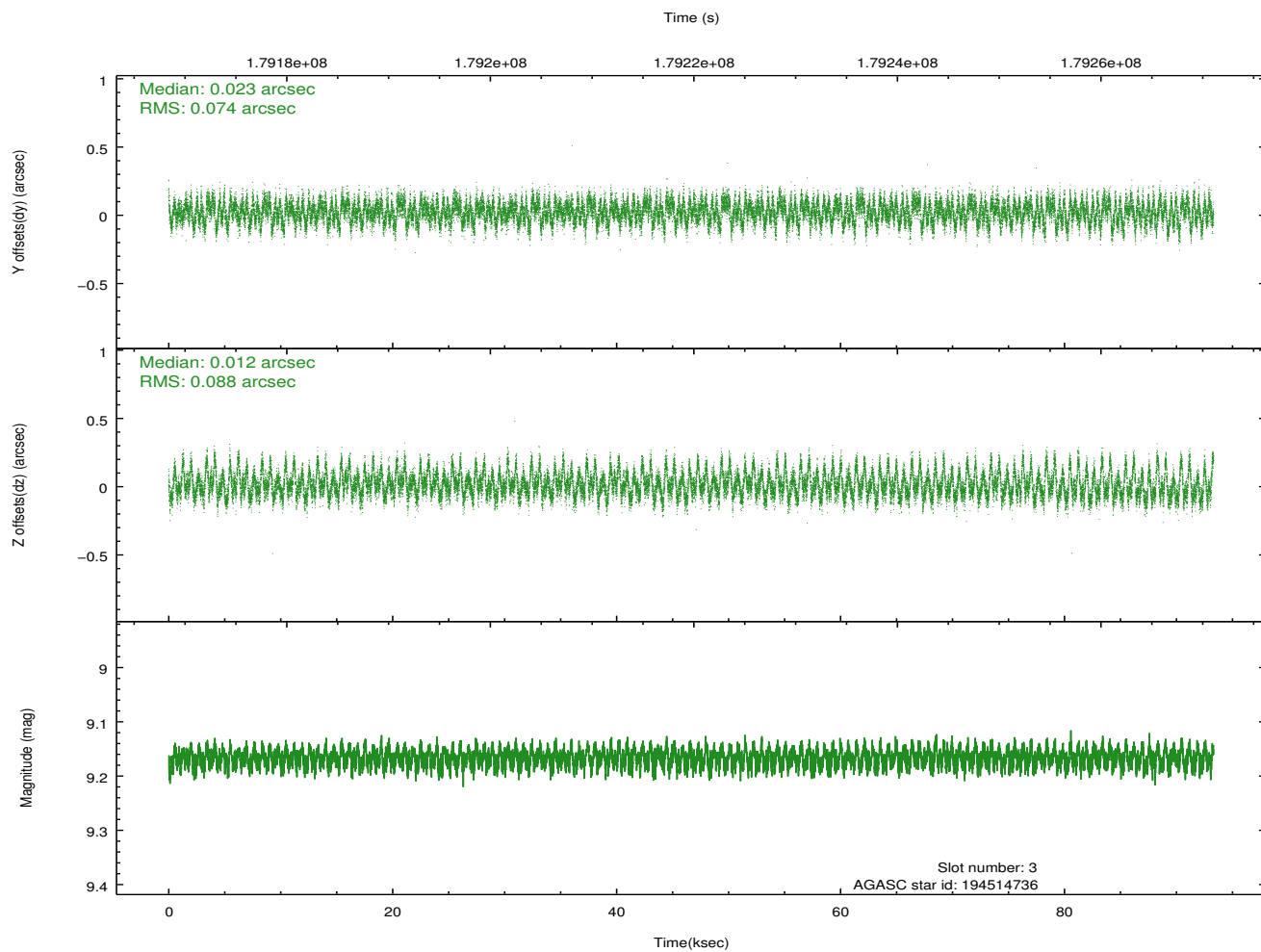
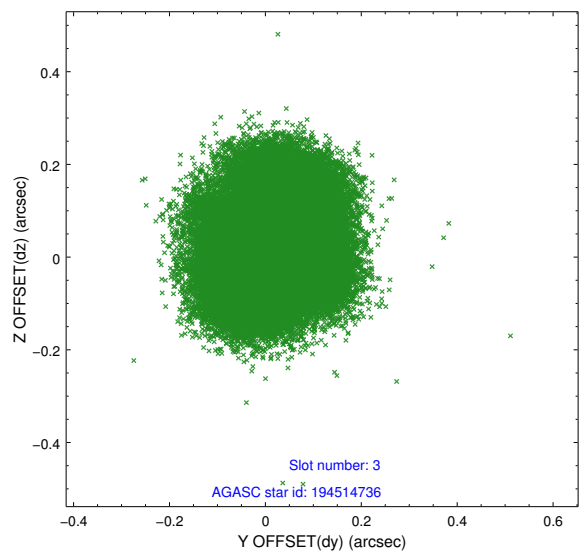
2.3 Aspect

Slot Statistics

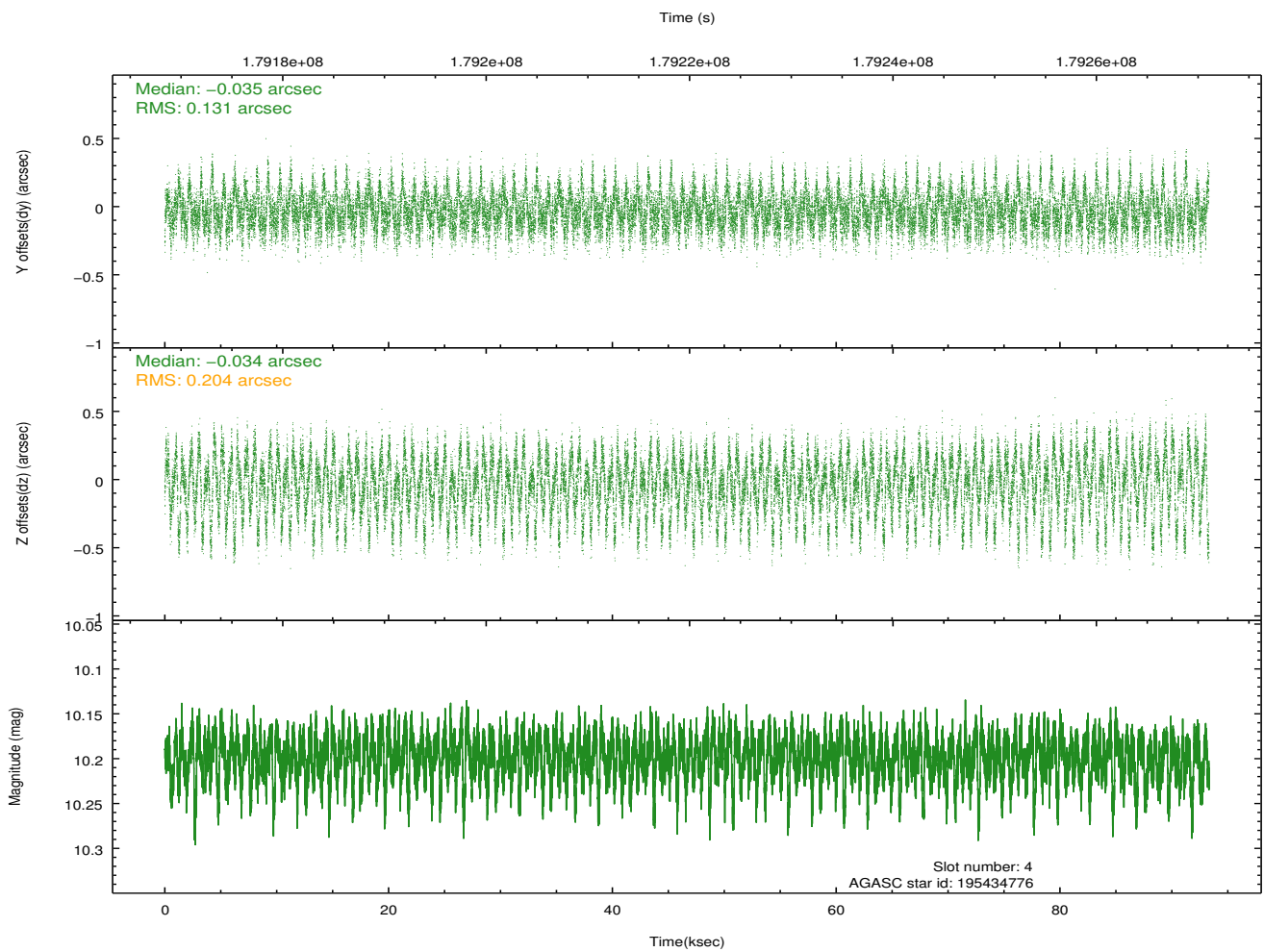
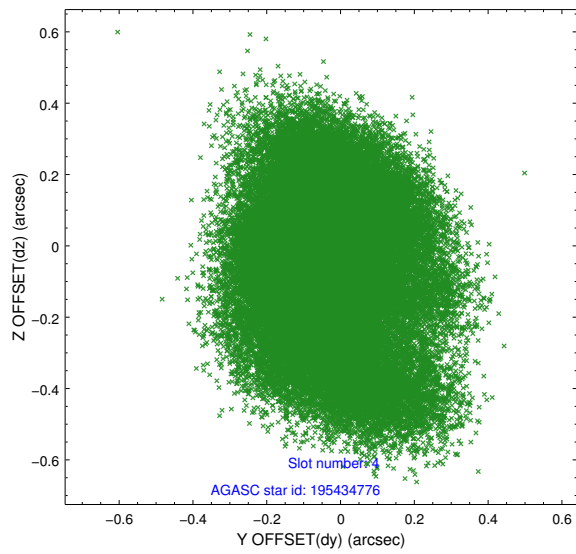
slot	status	id	mag	n_pts	med_dy	med_dz	dr1	dr2	ra	dec	mean_y	mean_z
0	FID	ACIS-I-1	7.24	22761	0.020	-0.001	0.007	0.017	0.000000	0.000000	934.04	-834.06
1	FID	ACIS-I-5	7.23	22759	-0.140	0.045	0.007	0.013	0.000000	0.000000	-1814.26	1063.54
2	FID	ACIS-I-6	7.25	22759	0.028	0.027	0.007	0.013	0.000000	0.000000	399.71	1707.91
3	GUIDE	194514736	9.17	45491	0.023	0.012	0.125	0.195	223.996360	22.211386	231.81	-854.44
4	GUIDE	195434776	10.20	45483	-0.035	-0.034	0.258	0.423	224.894254	22.153508	706.48	2108.14
5	OMITTED		0.00	0	0.000	0.000	0.000	0.000	0.000000	0.000000	0.00	0.00
6	GUIDE	264380752	10.24	45406	0.010	0.036	0.191	0.311	224.720923	22.632014	-1059.78	1683.14
7	OMITTED		0.00	0	0.000	0.000	0.000	0.000	0.000000	0.000000	0.00	0.00

2.4 Star Slots

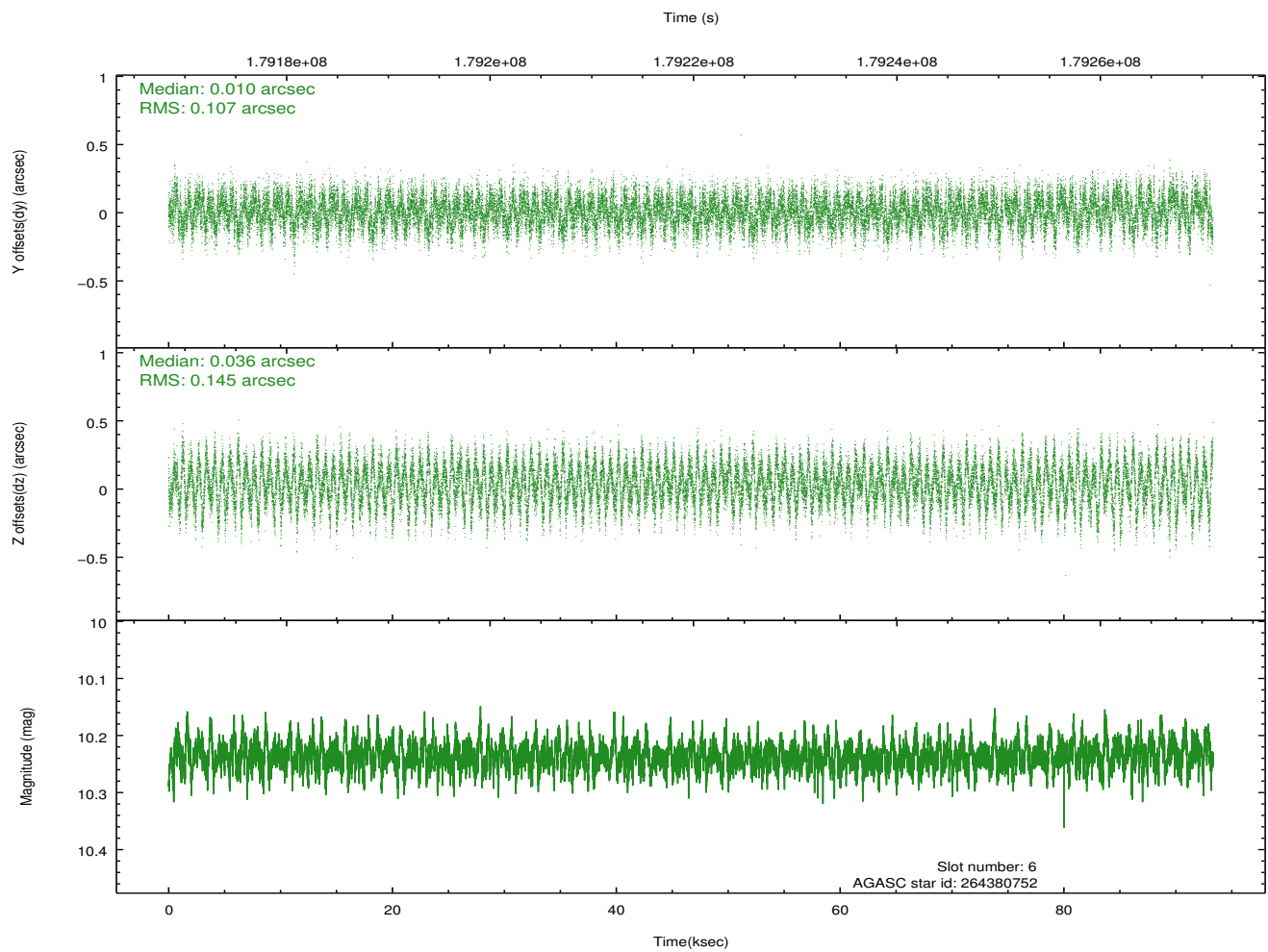
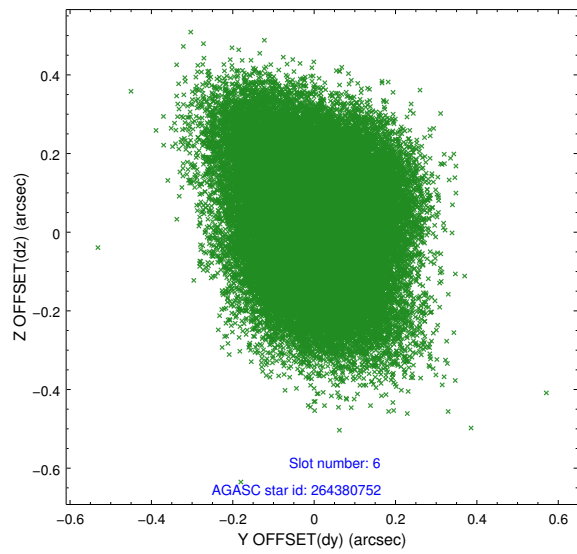
2.4.1 Slot 3



2.4.2 Slot 4

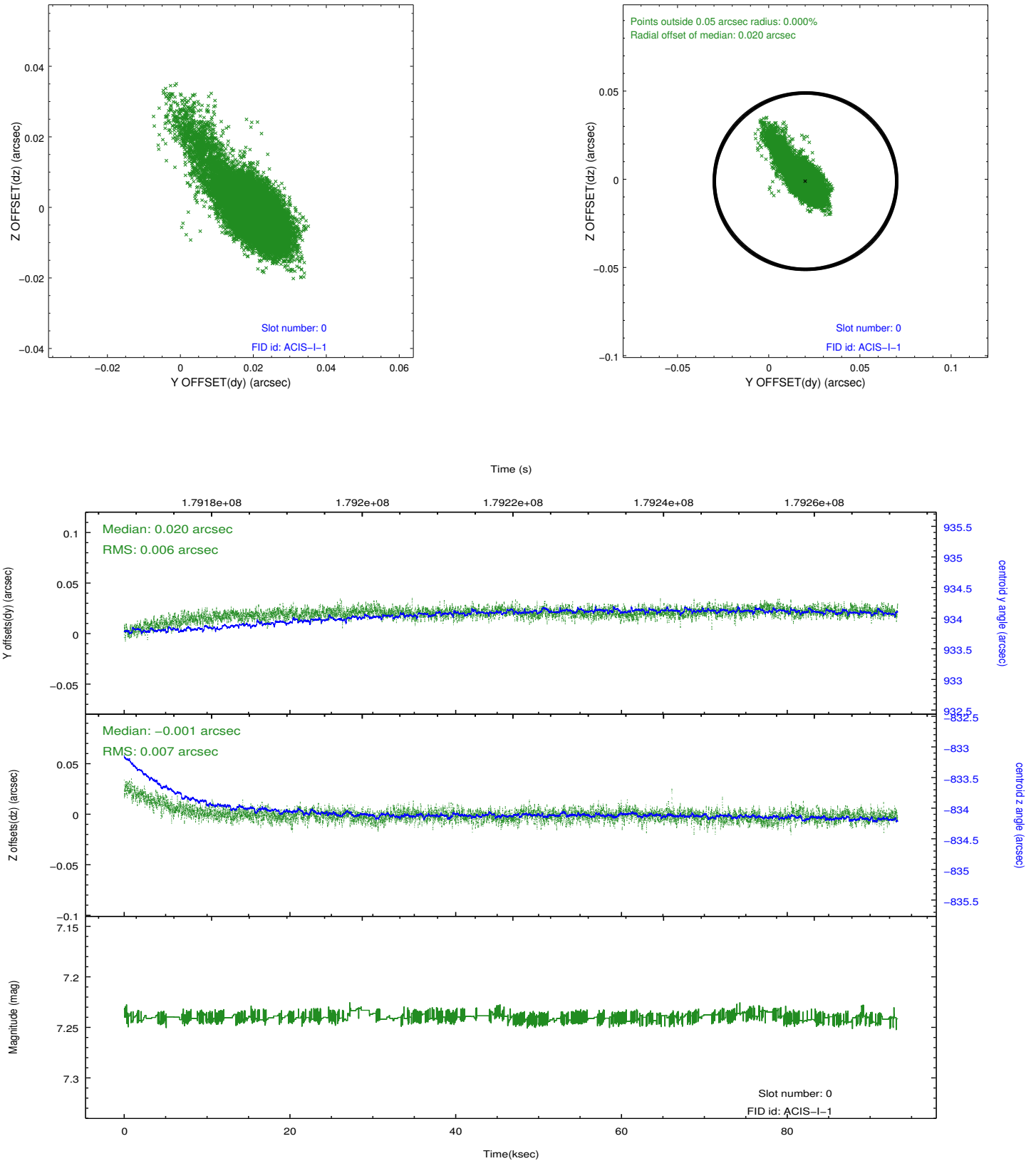


2.4.3 Slot 6

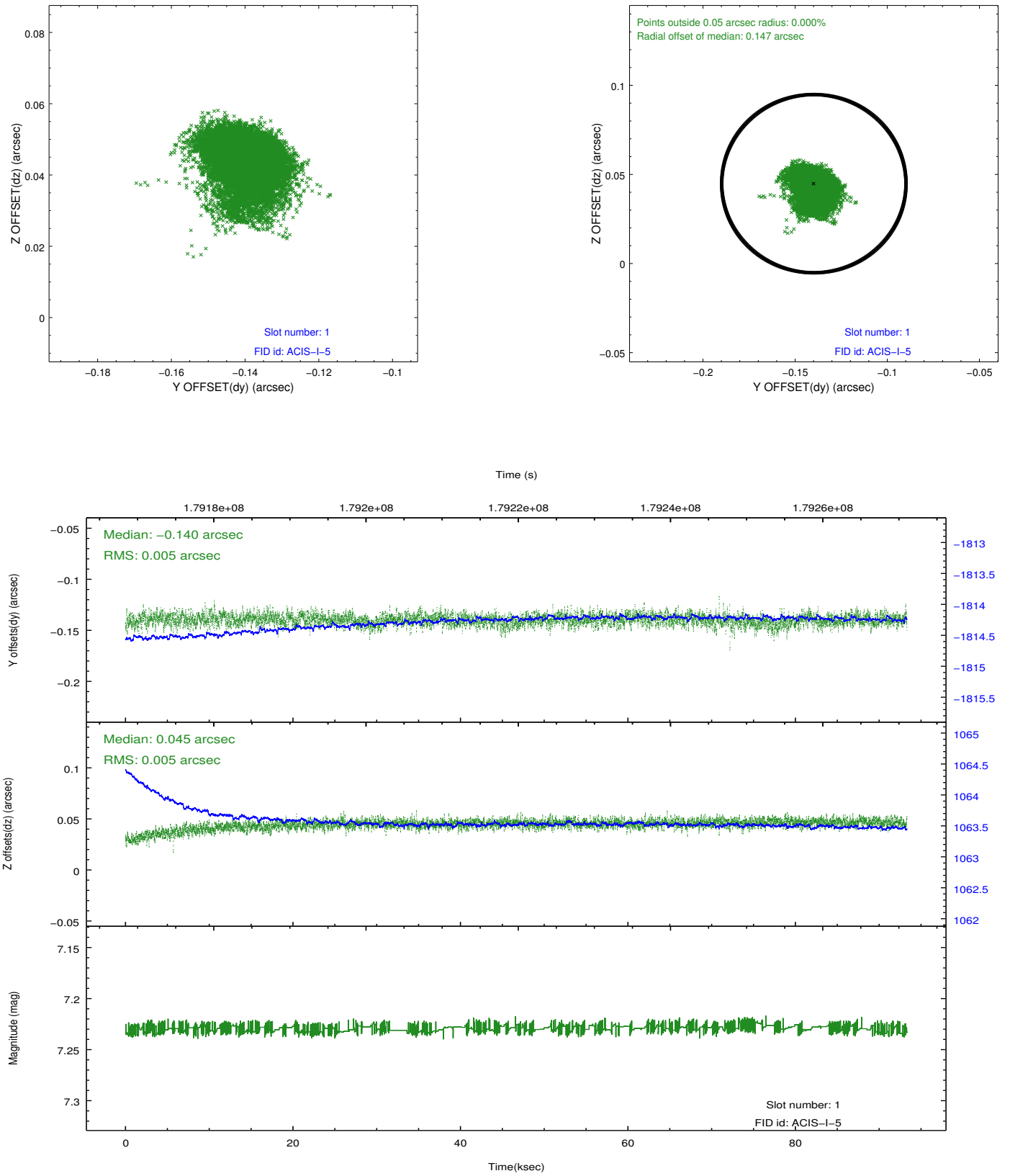


2.5 FID Slots

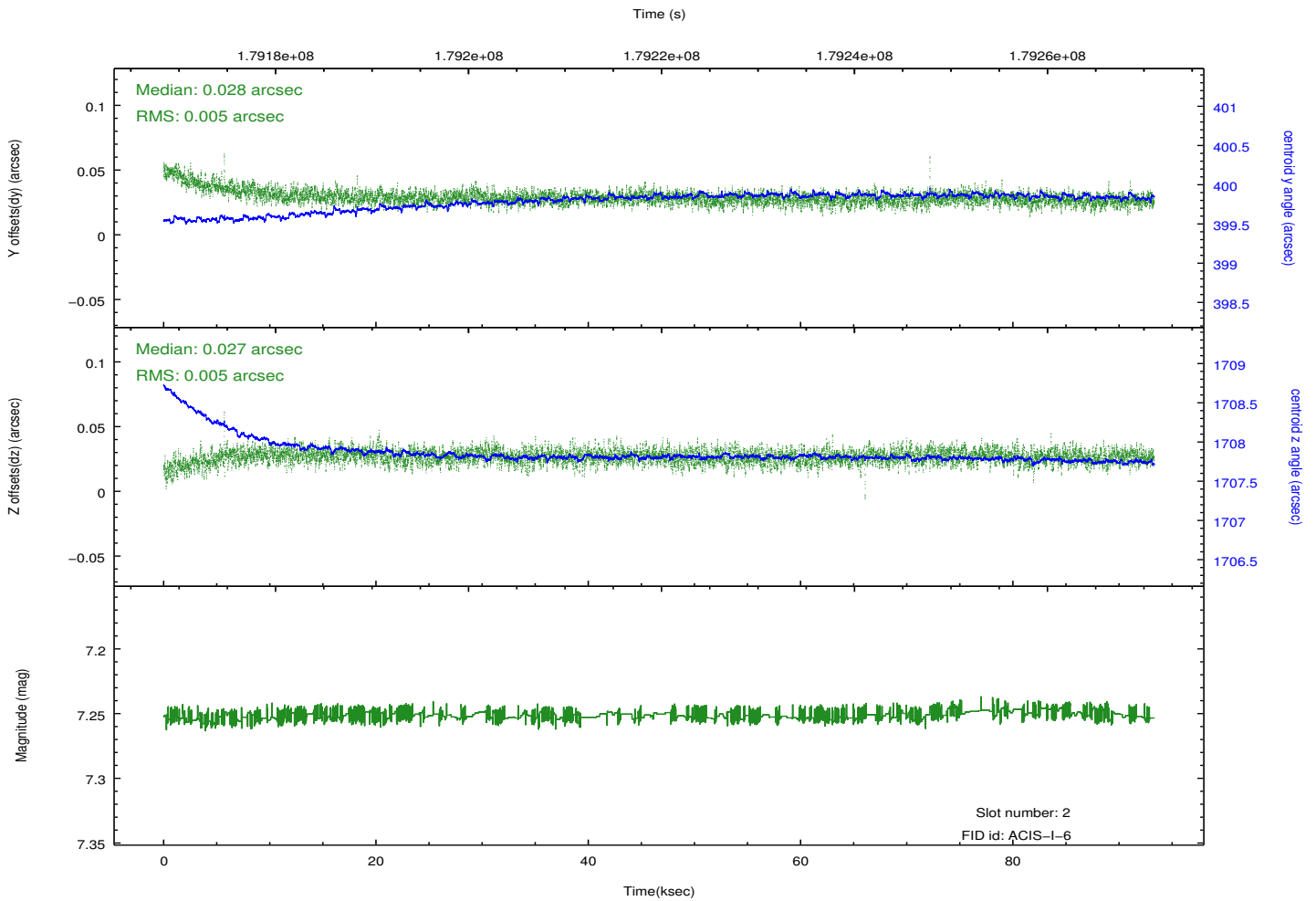
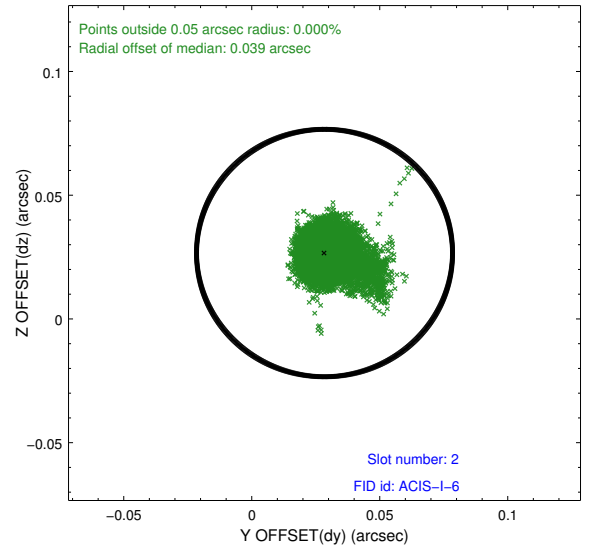
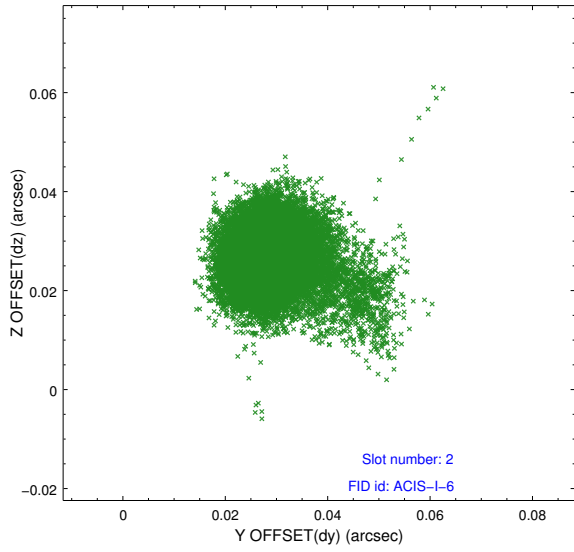
2.5.1 Slot 0



2.5.2 Slot 1



2.5.3 Slot 2



A Summary

A.1 Status

V&V Scientist	Beth Sundheim
V&V Date (YYYY-MM-DD)	2013.02.11
V&V Edition	1
V&V Disposition and Status	OK
V&V Charge Time	93.102

A.2 Comments

The guide stars in slots 5 and 7 were removed from the aspect solution due to poor data quality. The aspect solution is improved by the removal of these guide stars from the solution.