

V&V Reference Report

L2 ASCDS Version : 7.6.7.2

Observation 4642 - L2 Version 3
Chandra X-Ray Center

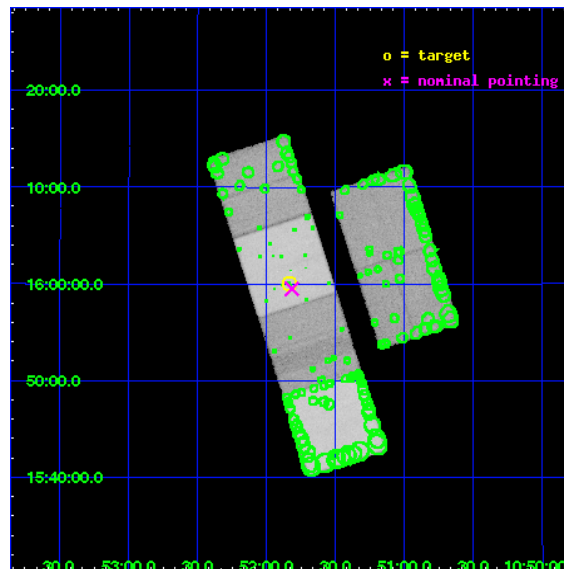
L2 Processing Date : Aug 8 2009

Contents

1	Front	2
2	OBI	3
2.1	OBI	3
2.1.1	Images	3
2.1.2	Bias	3
2.1.3	Parameters	4
2.1.4	Events	4
2.2	Compared Parameters	5
2.3	Aspect	6
2.4	Star Slots	9
2.4.1	Slot 3	9
2.4.2	Slot 4	10
2.4.3	Slot 5	11
2.4.4	Slot 6	12
2.4.5	Slot 7	13
2.5	FID Slots	14
2.5.1	Slot 0	14
2.5.2	Slot 1	15
2.5.3	Slot 2	16
3	Point Sources	17
A	Summary	18
A.1	Status	18
A.2	Comments	18

1 Front

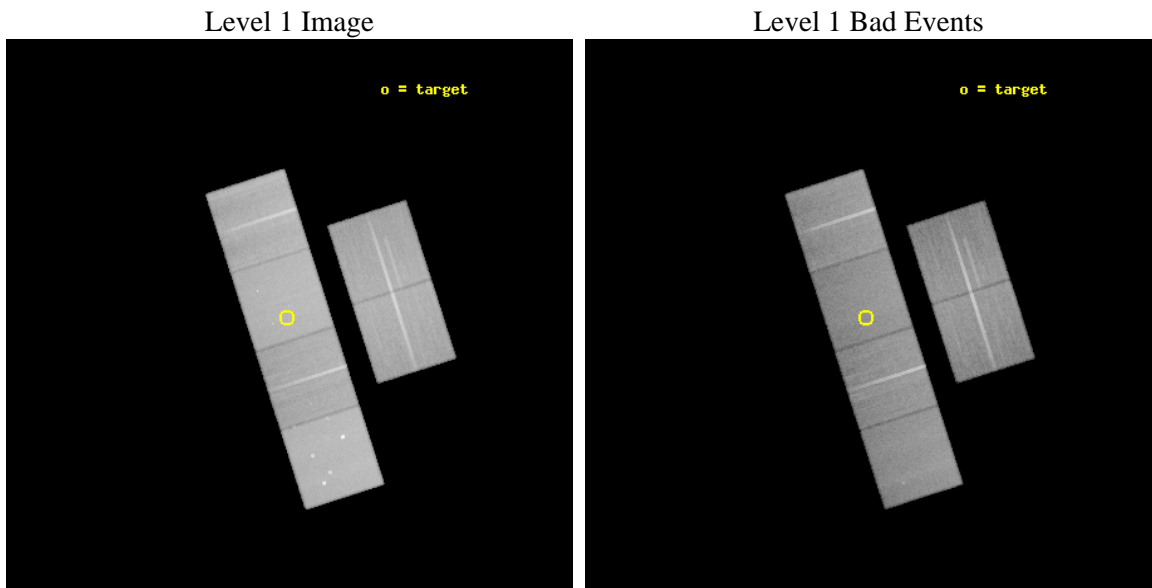
seq_num	500461	Sequence number
obs_id	4642	Observation id
title	The X-ray Emission from Old Supernovae	Proposal title
observer	Dr. Eric Schlegel	Principal investigator
object	SN1988Z	Source name
dtcycle	0	
cycle	P	events from which exps? Prim/Second/Both
ra_targ	162.95875	Observer's specified target RA
dec_targ	16.000194	Observer's specified target Dec
ra_nom	162.954052115	Nominal RA
dec_nom	15.9916711544	Nominal Dec
roll_nom	252.18181199736	Nominal Roll
revision	3	Processing version of data
ontime	47833.476920933	Sum of GTIs [s]
livetime	47227.780634298	Livetime [s]
ontime2	47630.195274323	Sum of GTIs [s]
ontime3	47633.600235492	Sum of GTIs [s]
ontime5	47833.476940811	Sum of GTIs [s]
ontime6	47614.11297527	Sum of GTIs [s]
ontime7	47833.476920933	Sum of GTIs [s]
ontime8	47679.014918834	Sum of GTIs [s]
l2events	759218	Number of level 2 events



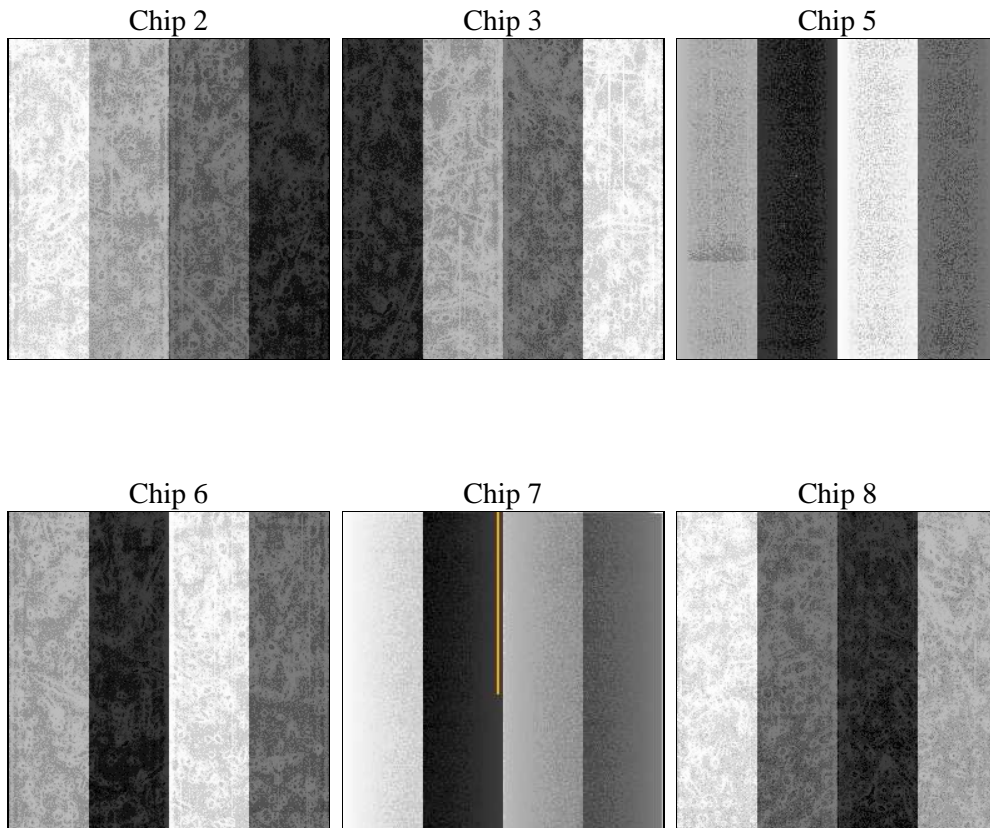
2 OBI

2.1 OBI

2.1.1 Images



2.1.2 Bias



2.1.3 Parameters

obi_num	0	Obi number	sched_exp_time	48459.373000	Scheduled observation exposure time
ascdsver	8.0	ASCDS version number	ontime	47833.476920933	Sum of GTIs [s]
caldbver	4.1.3	 	ontime2	47630.195274323	Sum of GTIs [s]
date	2009-08-08T04:00:53	Date and time of file creation	ontime3	47633.600235492	Sum of GTIs [s]
revision	3	Processing version of data	ontime5	47833.476940811	Sum of GTIs [s]
			ontime6	47614.11297527	Sum of GTIs [s]
			ontime7	47833.476920933	Sum of GTIs [s]
			ontime8	47679.014918834	Sum of GTIs [s]
			l1events	2837168	Number of level 1 events

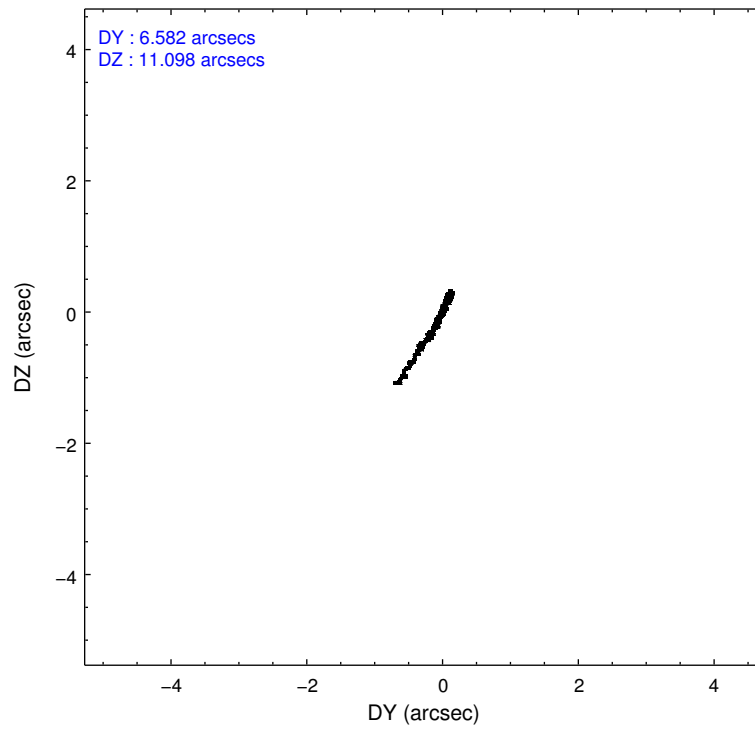
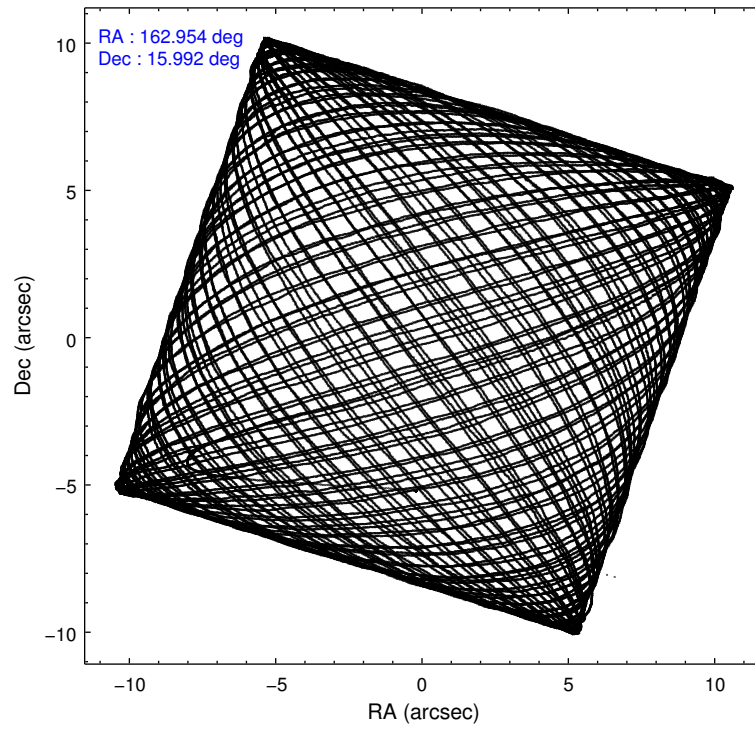
2.1.4 Events

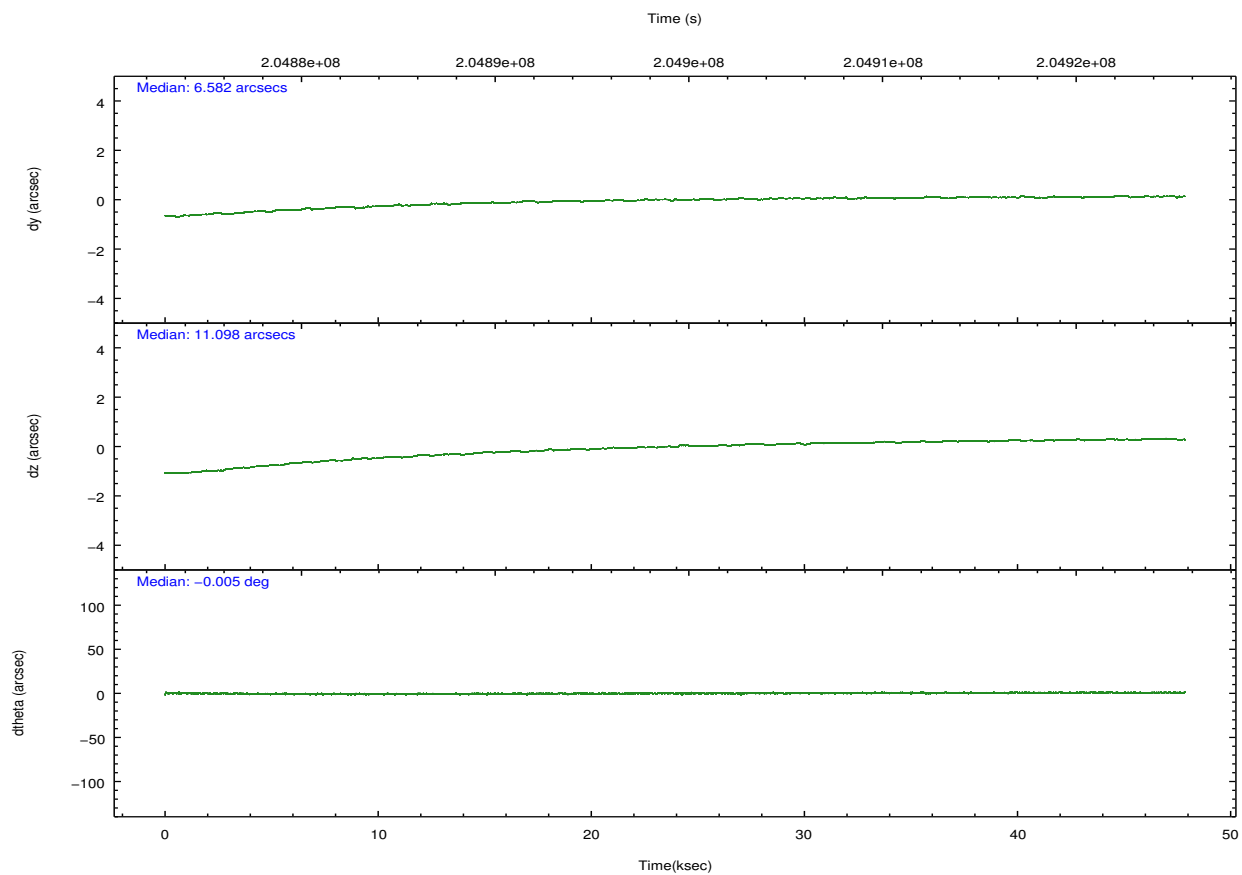
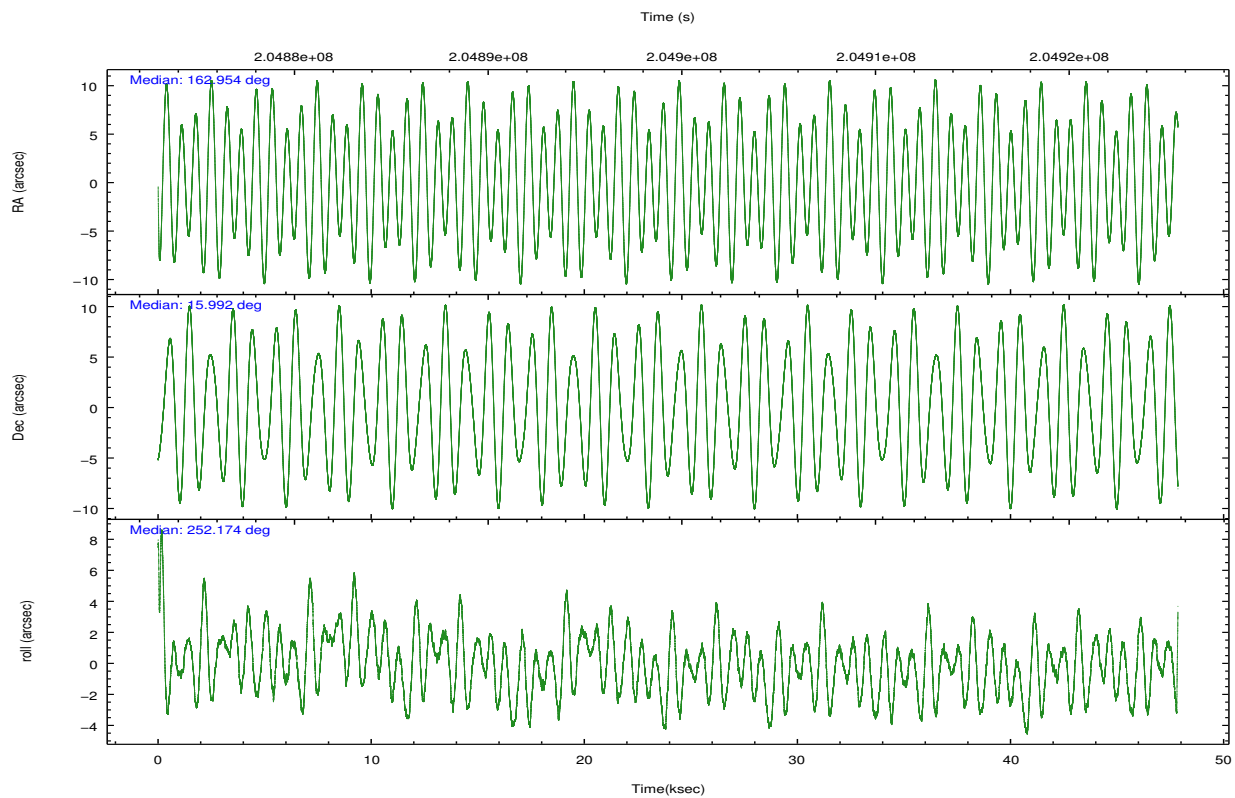
	ccd 2	ccd 3	ccd 5	ccd 6	ccd 7	ccd 8		ccd 2	ccd 3	ccd 5	ccd 6	ccd 7	ccd 8
level 1 events	412781	388628	595675	402044	539877	498163	grade 0 events	41749	40248	37851	36788	24205	54167
rejected events	340024	317189	313948	331231	302939	369490		10%	10%	6%	9%	4%	10%
rejected %	82%	81%	52%	82%	56%	74%	grade 1 events	394	416	1078	284	474	429
								0%	0%	0%	0%	0%	0%
							grade 2 events	12165	11947	85092	13120	46964	25842
								2%	3%	14%	3%	8%	5%
							grade 3 events	5370	5504	11518	5318	20559	12021
								1%	1%	1%	1%	3%	2%
							grade 4 events	5357	5534	11051	5213	20610	11635
								1%	1%	1%	1%	3%	2%
							grade 5 events	14601	16101	40307	17030	47756	21846
								3%	4%	6%	4%	8%	4%
							grade 6 events	9949	10148	147173	12057	133142	29235
								2%	2%	24%	2%	24%	5%
							grade 7 events	323196	298730	261605	312234	246167	342988
								78%	76%	43%	77%	45%	68%

2.2 Compared Parameters

Parameter	Planned	Actual	Parameter	Planned	Actual
Instrument	ACIS	ACIS	Obspar format version number	6	6
Detector	ACIS-235678	ACIS-235678	Obspar file type	PREDICTED	ACTUAL
Grating	NONE	NONE	Obspar update status	NONE	UPDATED
Data mode	FAINT	FAINT	On-chip summing requested	N	N
Observation mode	POINTING	POINTING	Subarray requested	NONE	NONE
Pointing RA	162.947685	162.9540521150033	Alternating exposures requested	N	N
Pointing Dec	16.018182	15.99167115439962	Primary exposure time	0.000000	3.2
Pointing Roll	252.026935	252.1818119973624			
SIM focus pos (mm)	-0.684267	-0.6828225247311905			
SIM defocus (mm)	0	0.001444936568705701			
SIM translation stage pos (mm)	-190.132523	-190.1425803651734			
SIM translation stage offset (mm)	0	0.01005778216563158			
Observation start time	204875537.184000	204873424.43213			
Observation start date	2004-06-29T05:51:13	2004-06-29T05:17:04			
Observation end time	204923997.184000	204923234.82184			
Observation end date	2004-06-29T19:18:53	2004-06-29T19:07:14			
Read mode	TIMED	TIMED			

2.3 Aspect



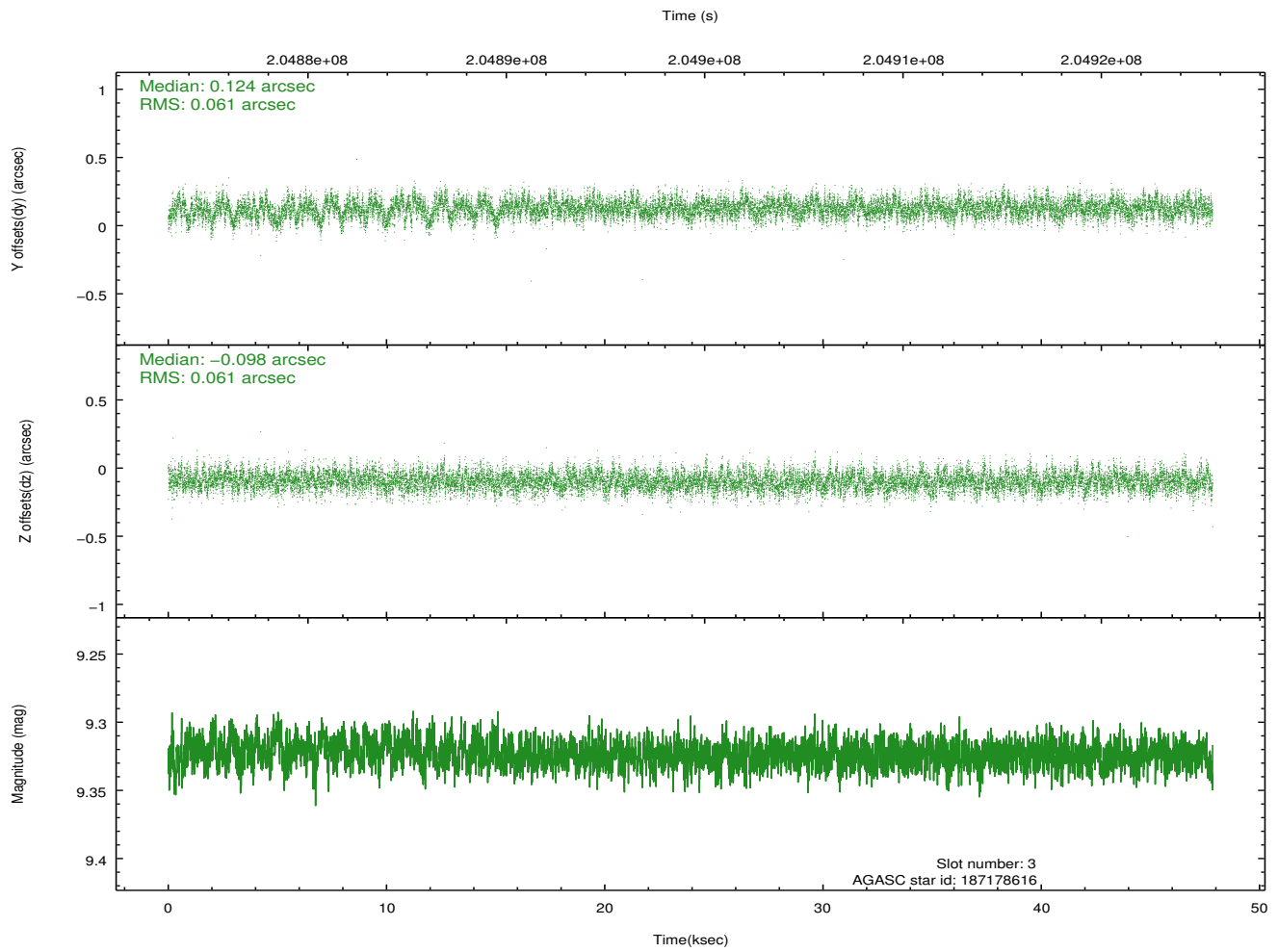
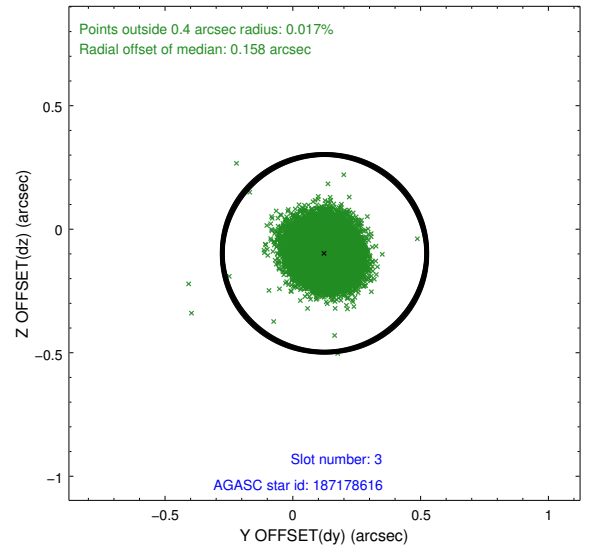
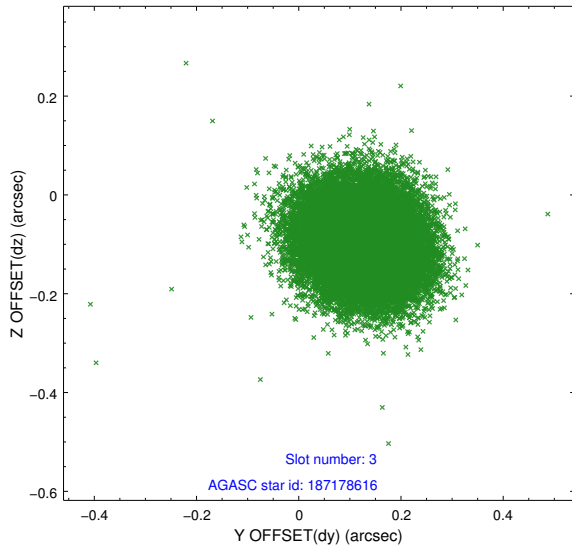


Slot Statistics

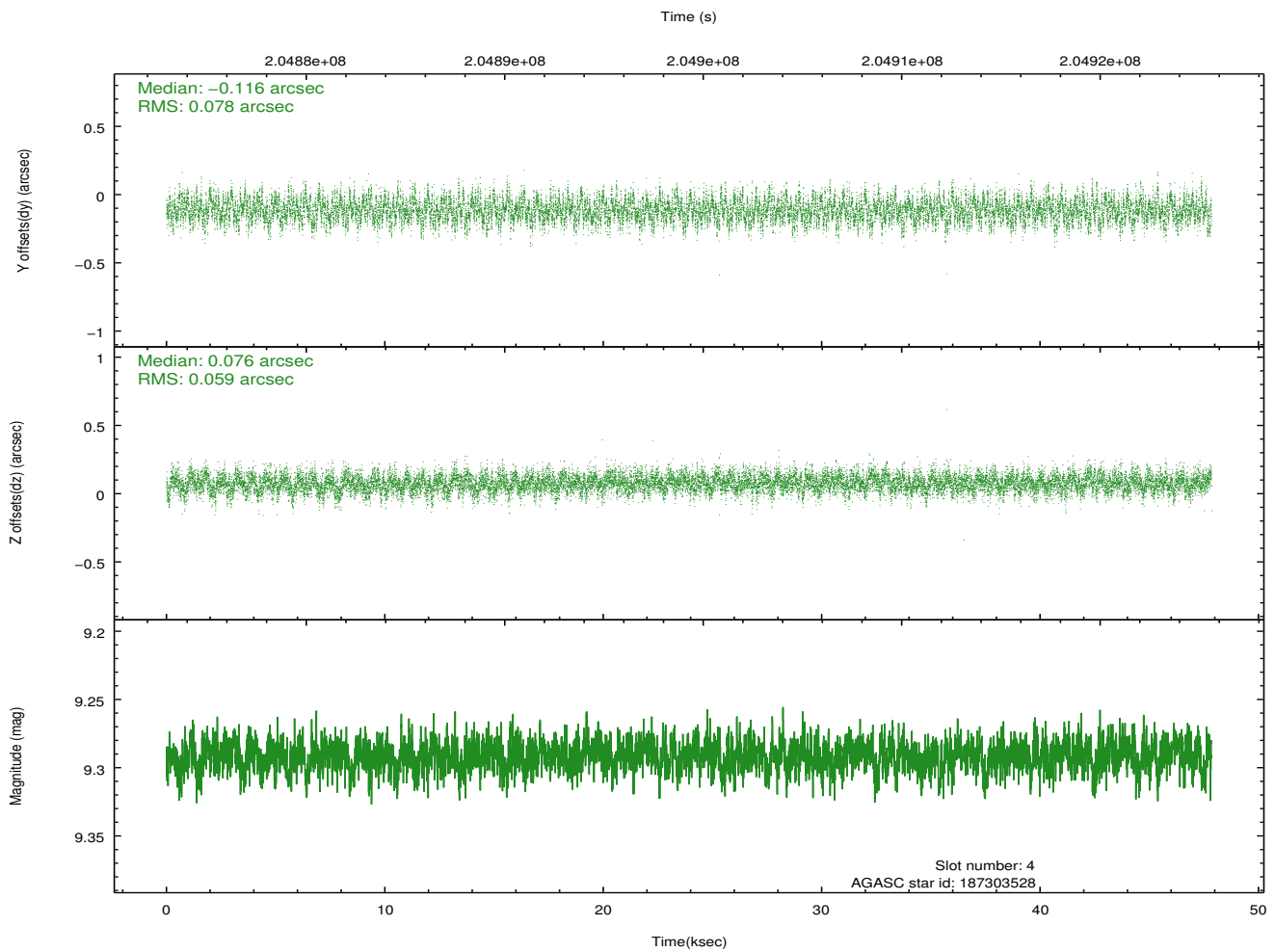
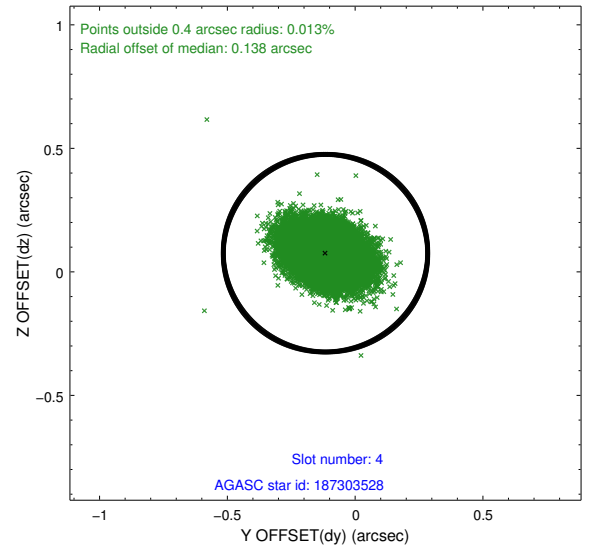
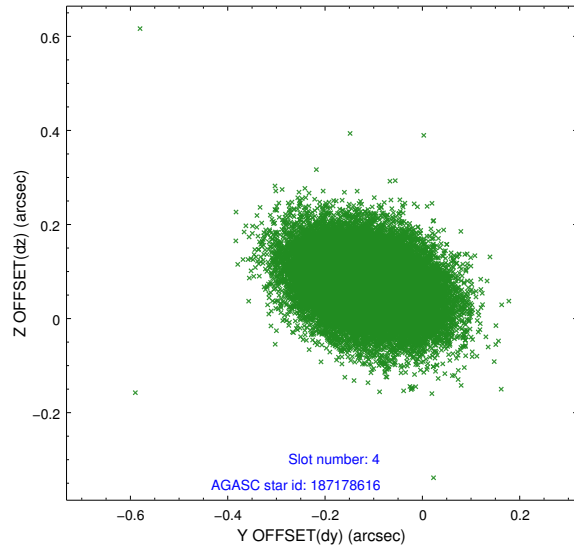
slot	status	id	mag	n_pts	med_dy	med_dz	dr1	dr2	ra	dec	mean_y	mean_z
0	FID	ACIS-S-2	7.10	11666	-0.056	-0.020	0.010	0.015	0.000000	0.000000	-759.26	-1732.22
1	FID	ACIS-S-4	7.20	11664	0.077	0.032	0.008	0.016	0.000000	0.000000	2154.13	176.37
2	FID	ACIS-S-5	7.23	11663	-0.053	-0.004	0.008	0.013	0.000000	0.000000	-1812.14	169.93
3	GUIDE	187178616	9.32	23310	0.124	-0.098	0.092	0.148	162.342515	15.877179	1127.36	-1837.17
4	GUIDE	187303528	9.29	23317	-0.116	0.076	0.104	0.170	163.727744	16.389121	-2106.59	2149.05
5	GUIDE	187303568	8.54	23329	0.095	-0.143	0.077	0.122	163.012246	16.095574	-333.71	126.60
6	GUIDE	187306752	9.28	23318	0.061	0.164	0.096	0.152	163.240541	15.817007	375.28	1188.51
7	GUIDE	187310592	9.45	23320	-0.163	-0.001	0.090	0.147	162.727803	16.639080	-1892.09	-1411.60

2.4 Star Slots

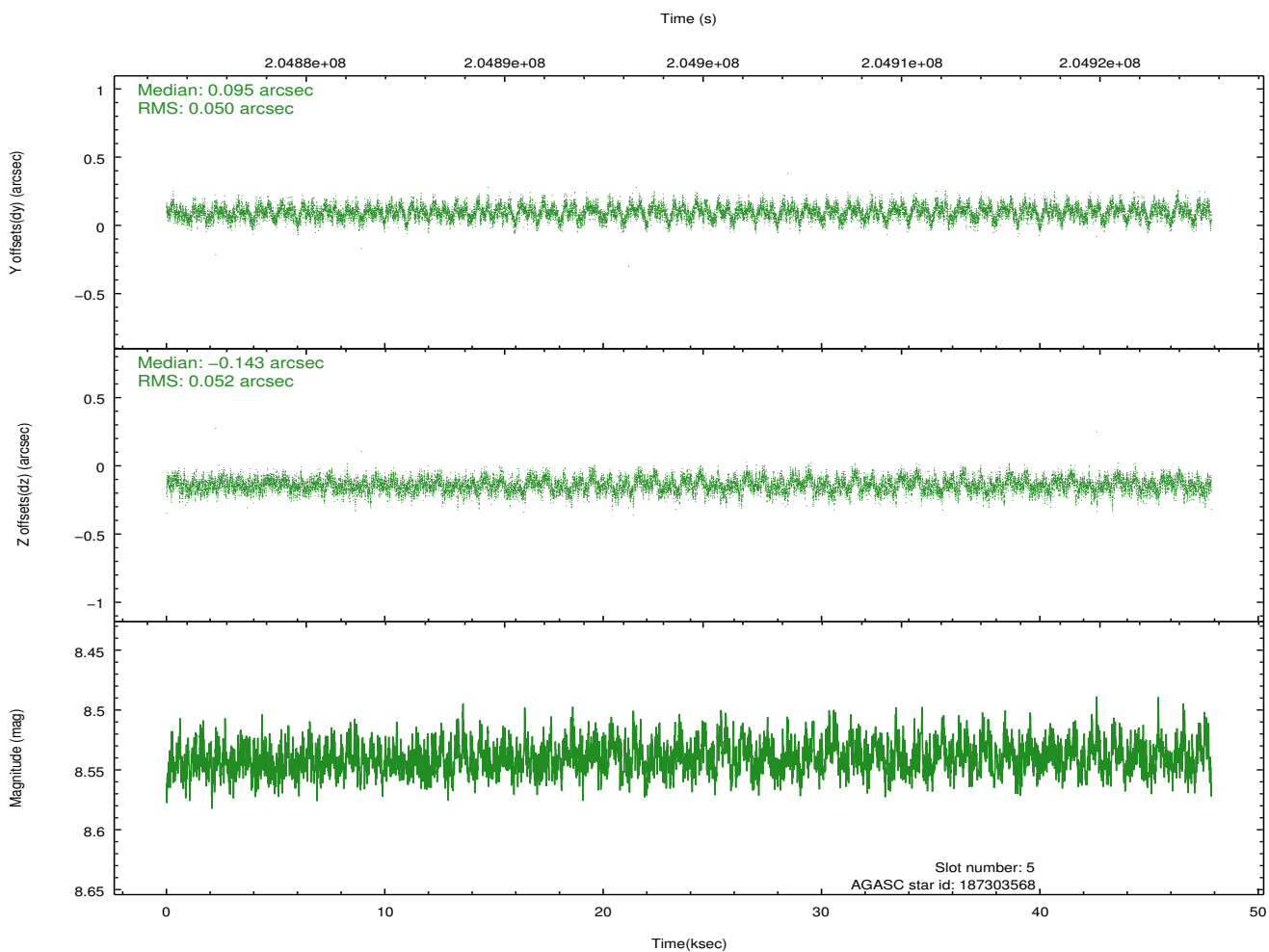
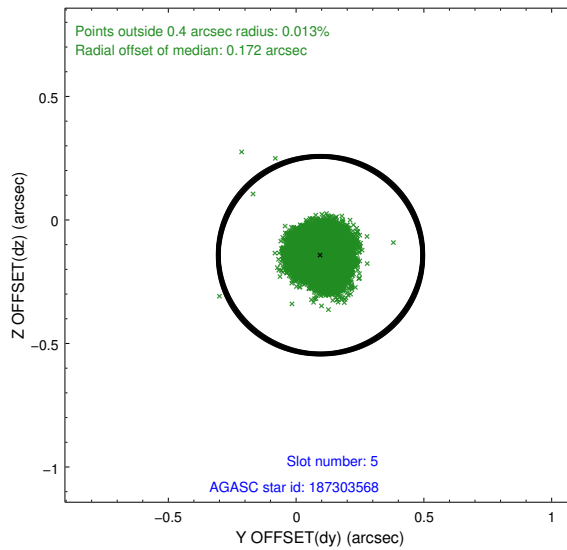
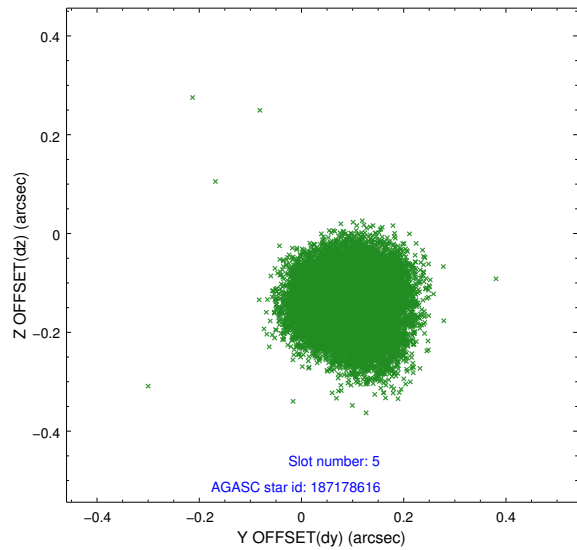
2.4.1 Slot 3



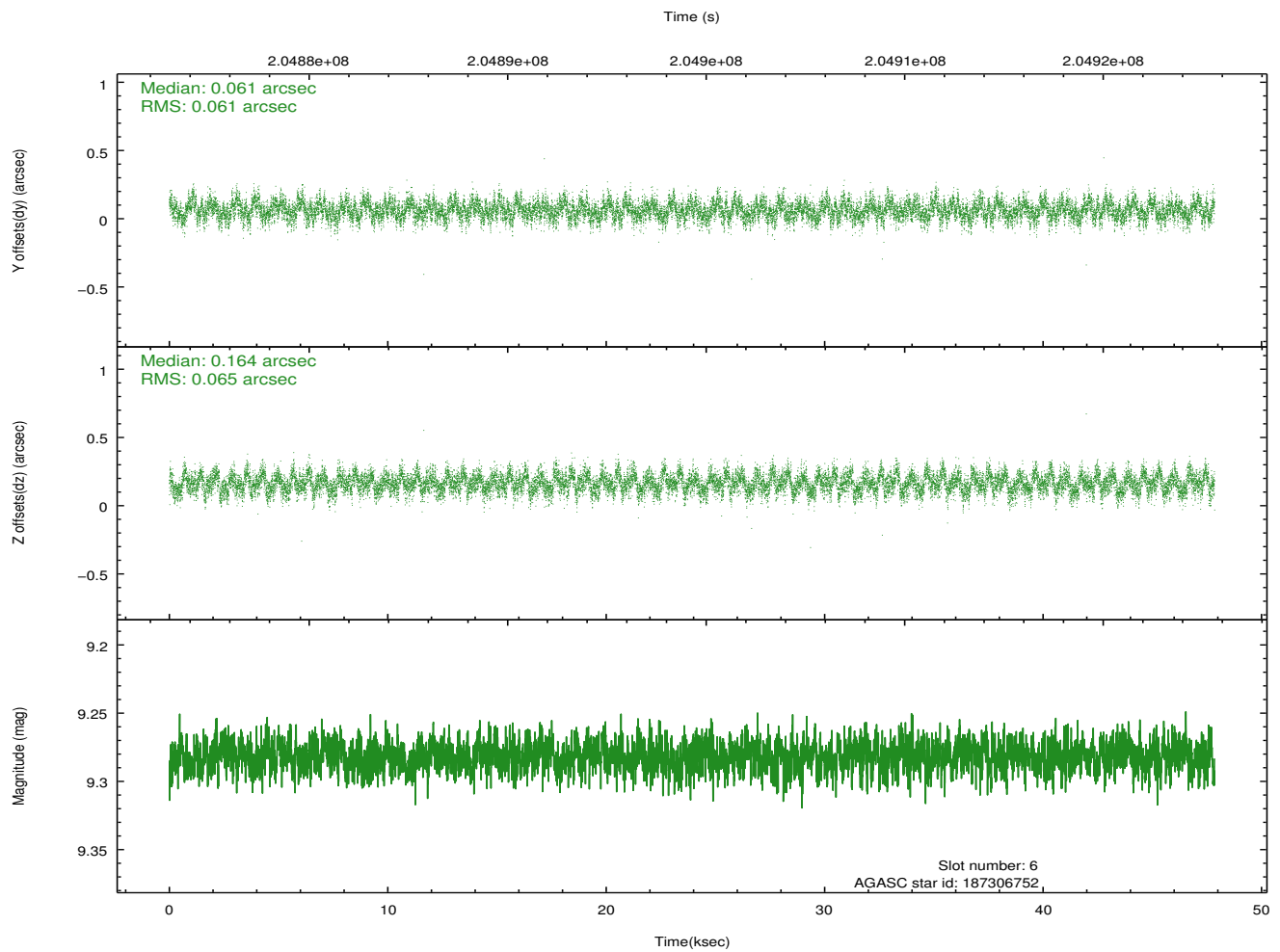
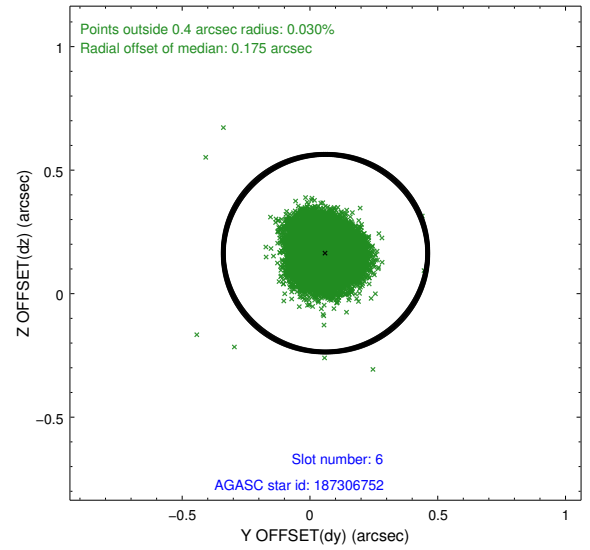
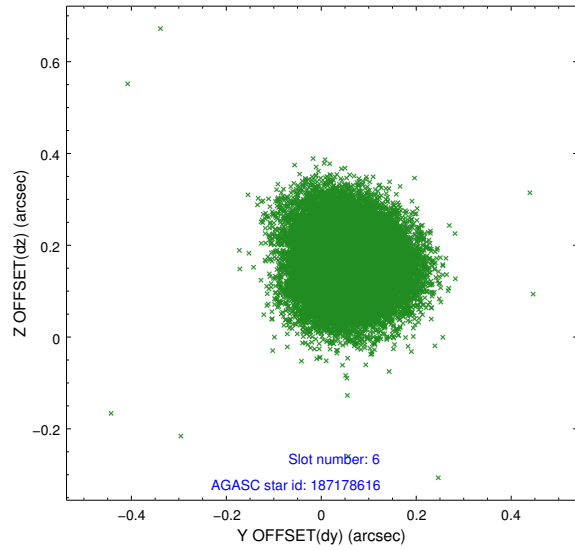
2.4.2 Slot 4



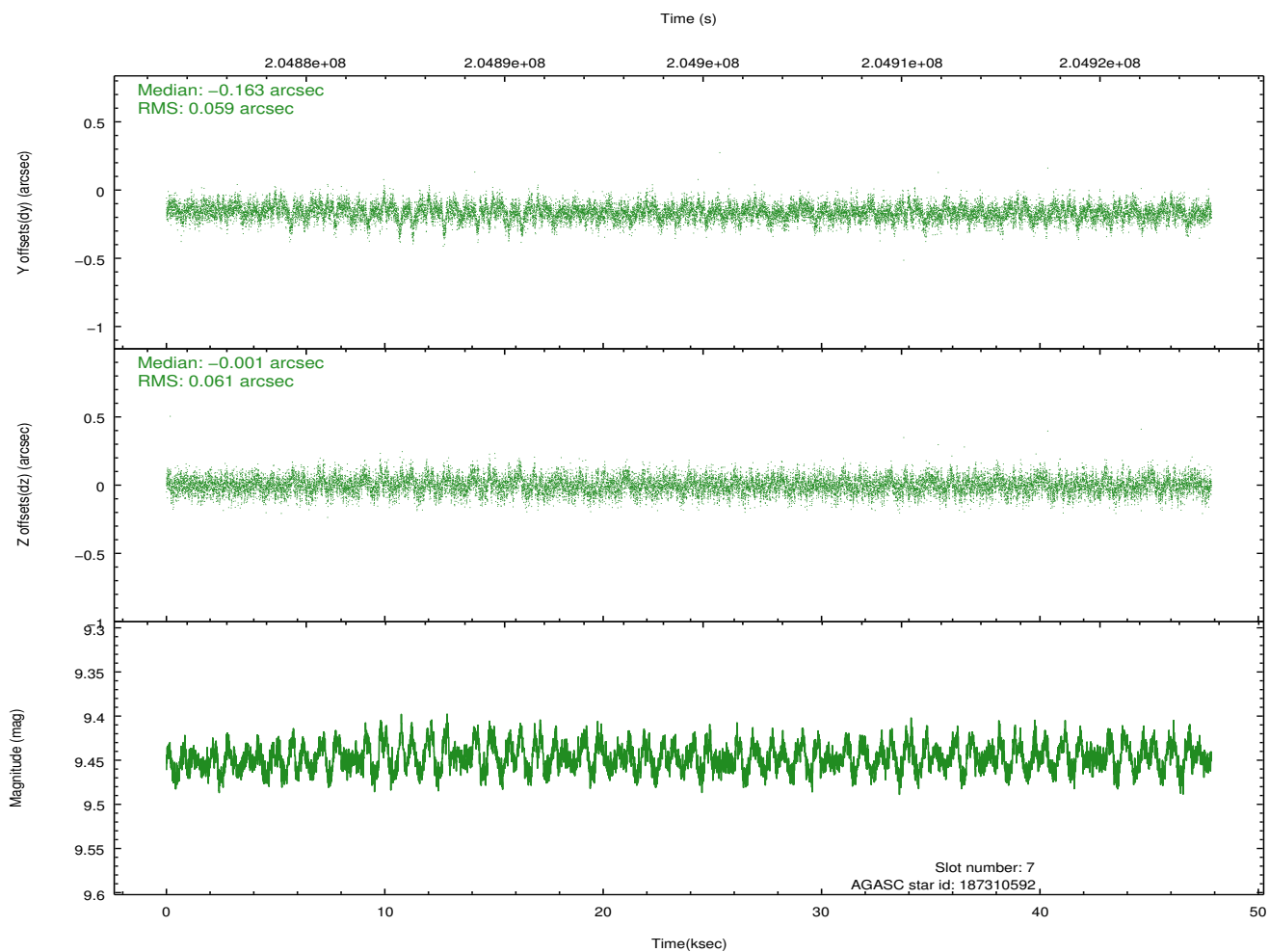
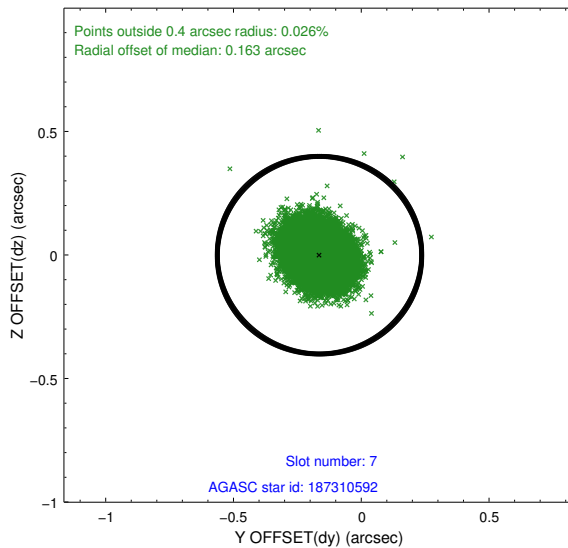
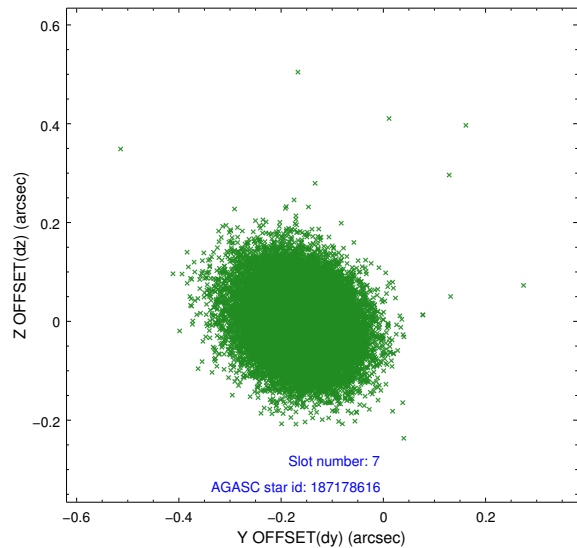
2.4.3 Slot 5



2.4.4 Slot 6

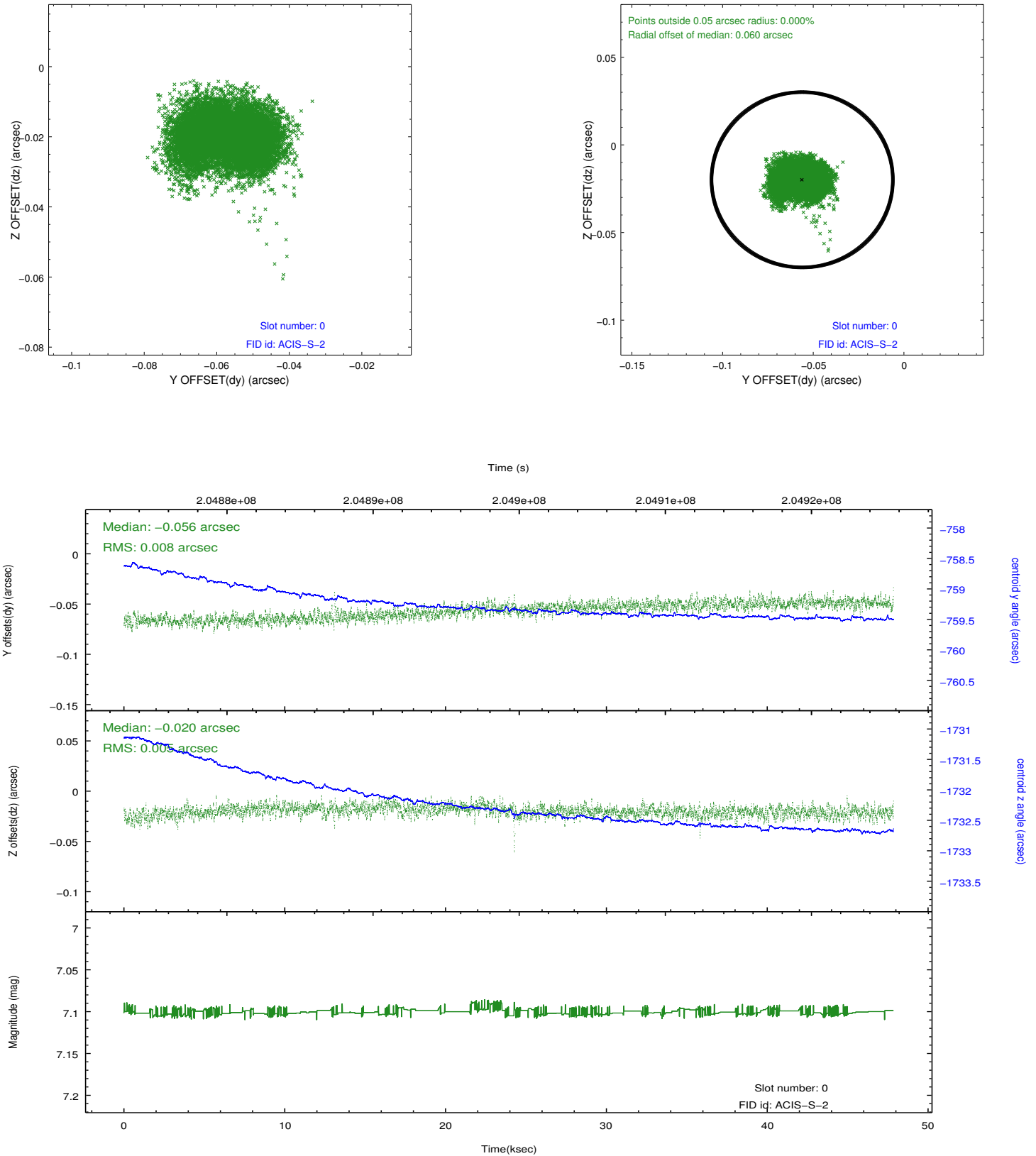


2.4.5 Slot 7

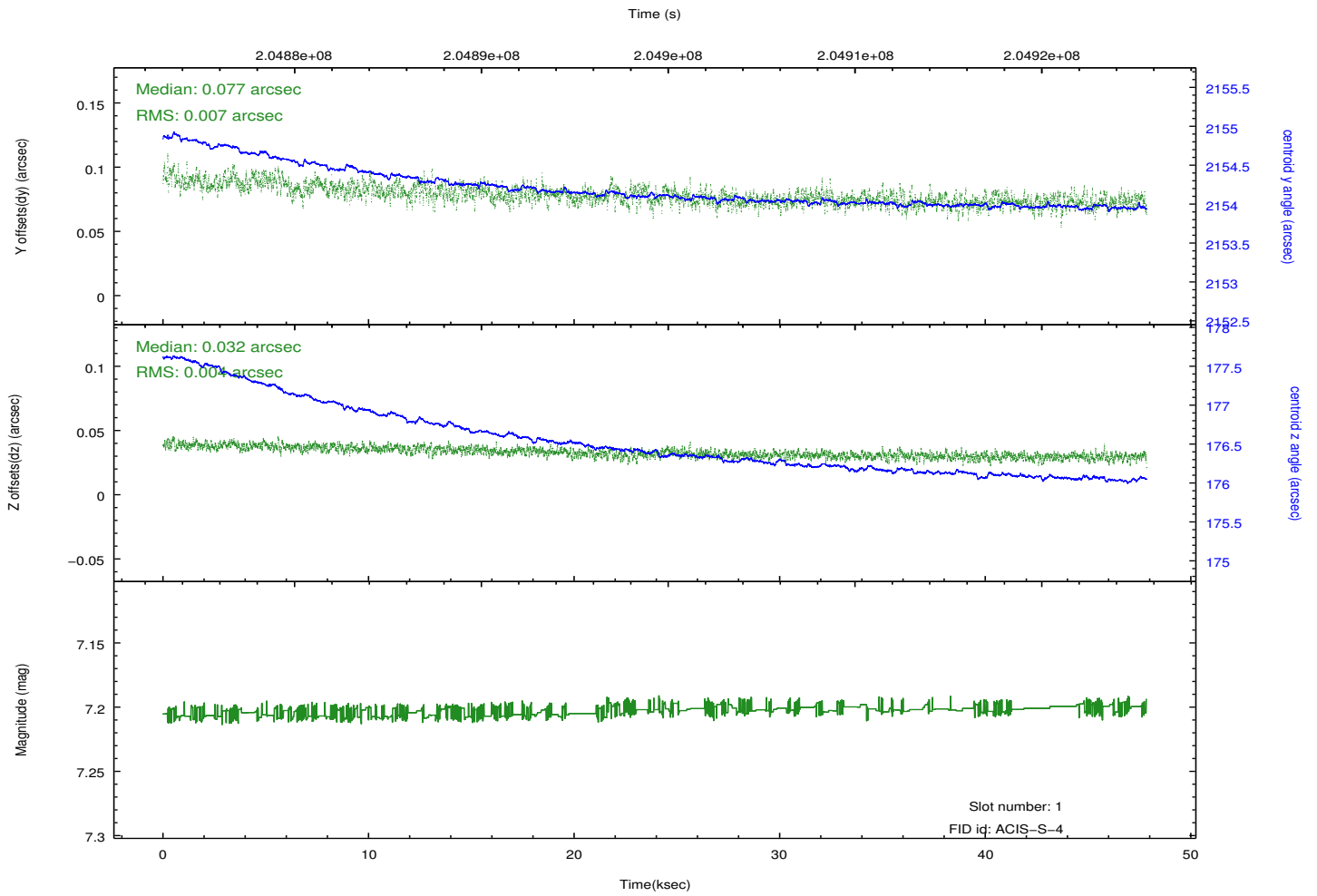
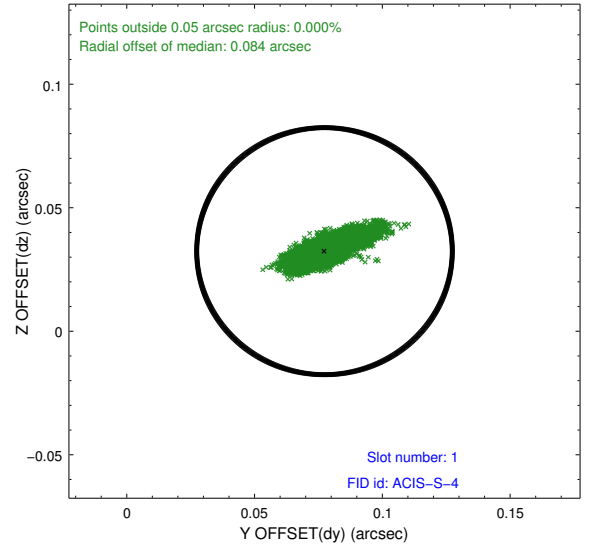
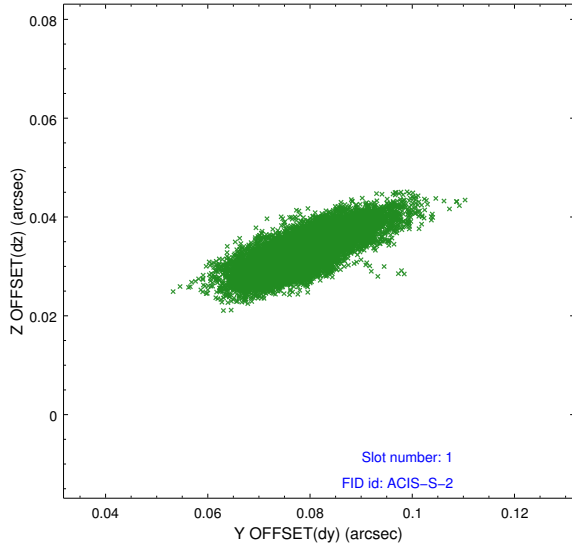


2.5 FID Slots

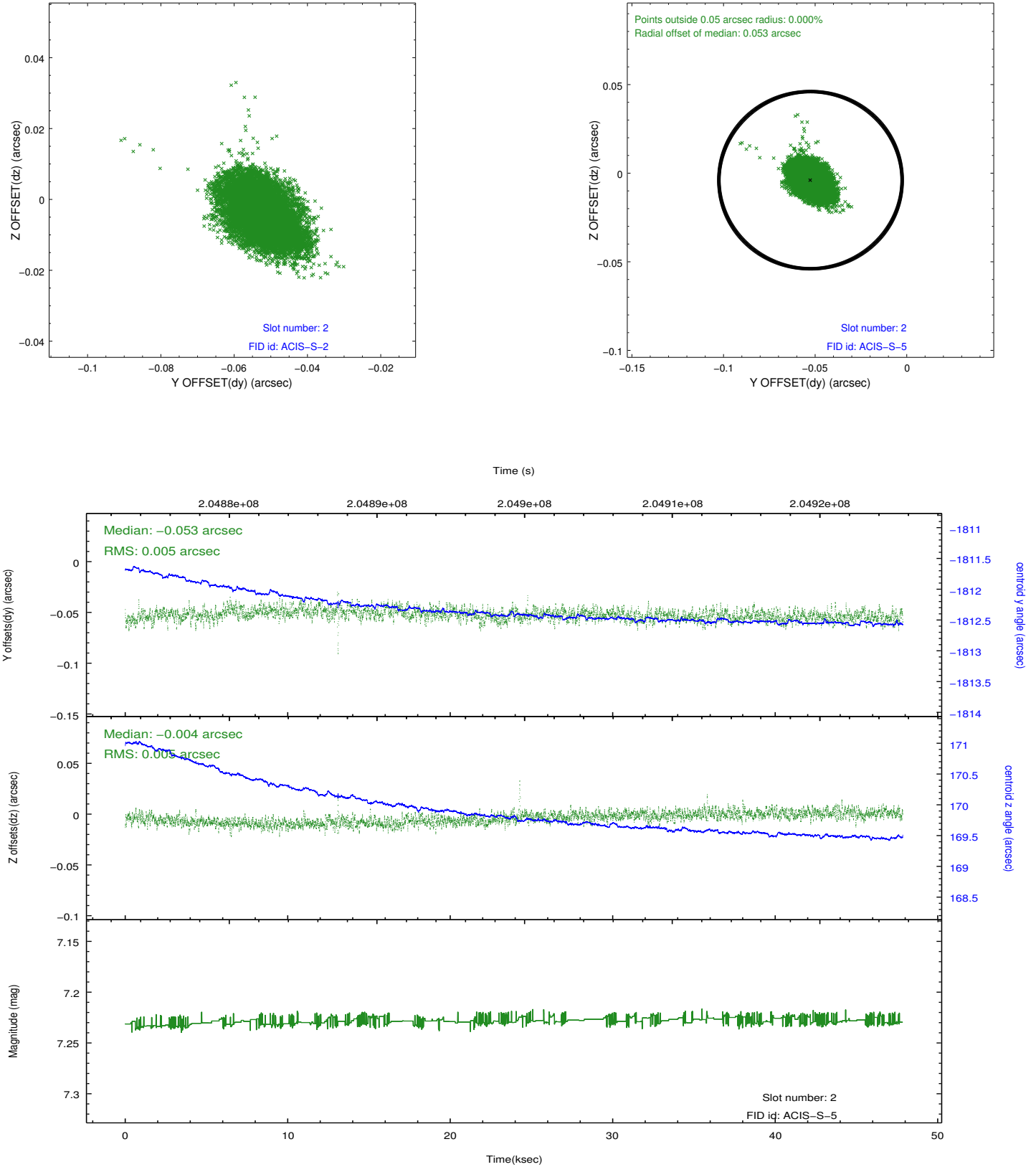
2.5.1 Slot 0



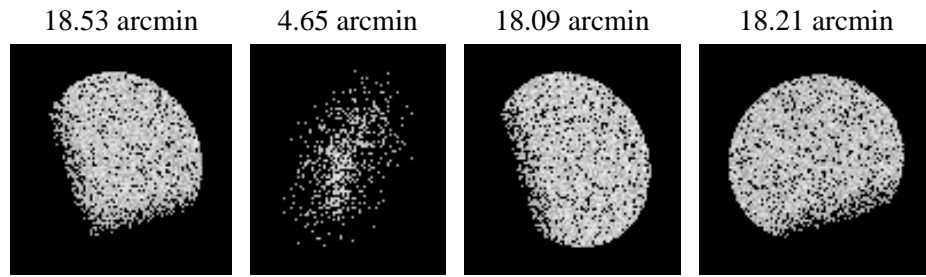
2.5.2 Slot 1



2.5.3 Slot 2



3 Point Sources



A Summary

A.1 Status

V&V Scientist	Doug Morgan
V&V Date (YYYY-MM-DD)	2009.08.11
V&V Edition	1
V&V Disposition and Status	OK
V&V Charge Time	47.833

A.2 Comments

This observation was interrupted by safing of the science instruments onboard Chandra due to high solar radiation environment. The observation was interrupted at 2004:181:19:05.