

V&V Reference Report

L2 ASCDS Version : 8.5

Observation 4662 - L2 Version 3
Chandra X-Ray Center

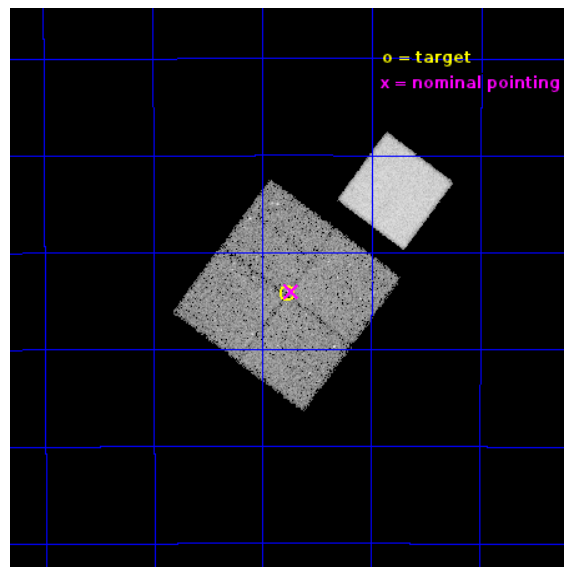
L2 Processing Date : Dec 6 2012

Contents

1	Front	2
2	OBI	3
2.1	OBI	3
2.1.1	Images	3
2.1.2	Bias	3
2.1.3	Parameters	4
2.1.4	Events	4
2.2	Compared Parameters	5
2.3	Aspect	6
2.4	Star Slots	9
2.4.1	Slot 3	9
2.4.2	Slot 4	10
2.4.3	Slot 5	11
2.4.4	Slot 6	12
2.4.5	Slot 7	13
2.5	FID Slots	14
2.5.1	Slot 0	14
2.5.2	Slot 1	15
2.5.3	Slot 2	16
A	Summary	17
A.1	Status	17
A.2	Comments	17

1 Front

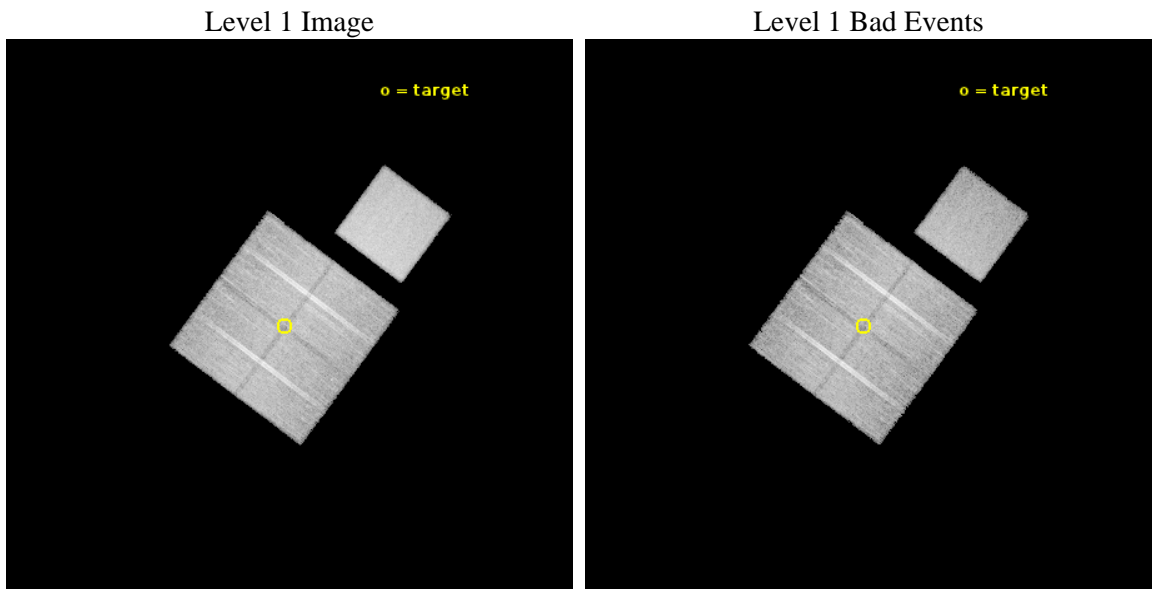
seq_num	500481	Sequence number
obs_id	4662	Observation id
title	The Energetics and Host Galaxies of X-Ray Flashes	Proposal title
observer	Prof. Derek Fox	Principal investigator
object	XRF040701	Source name
dtcycle	0	
cycle	P	events from which exps? Prim/Second/Both
ra_targ	311.942917	Observer's specified target RA [deg]
dec_targ	-40.236944	Observer's specified target Dec [deg]
ra_nom	311.93355832905	Nominal RA [deg]
dec_nom	-40.234076766672	Nominal Dec [deg]
roll_nom	36.671310981581	Nominal Roll [deg]
revision	3	Processing version of data
ontime	18984.318012983	Sum of GTIs [s]
livetime	18736.273922091	Livetime [s]
ontime0	18987.458993226	Sum of GTIs [s]
ontime1	18987.458993226	Sum of GTIs [s]
ontime2	18990.599963456	Sum of GTIs [s]
ontime3	18984.318012983	Sum of GTIs [s]
ontime7	18990.599963456	Sum of GTIs [s]
l2events	139175	Number of level 2 events



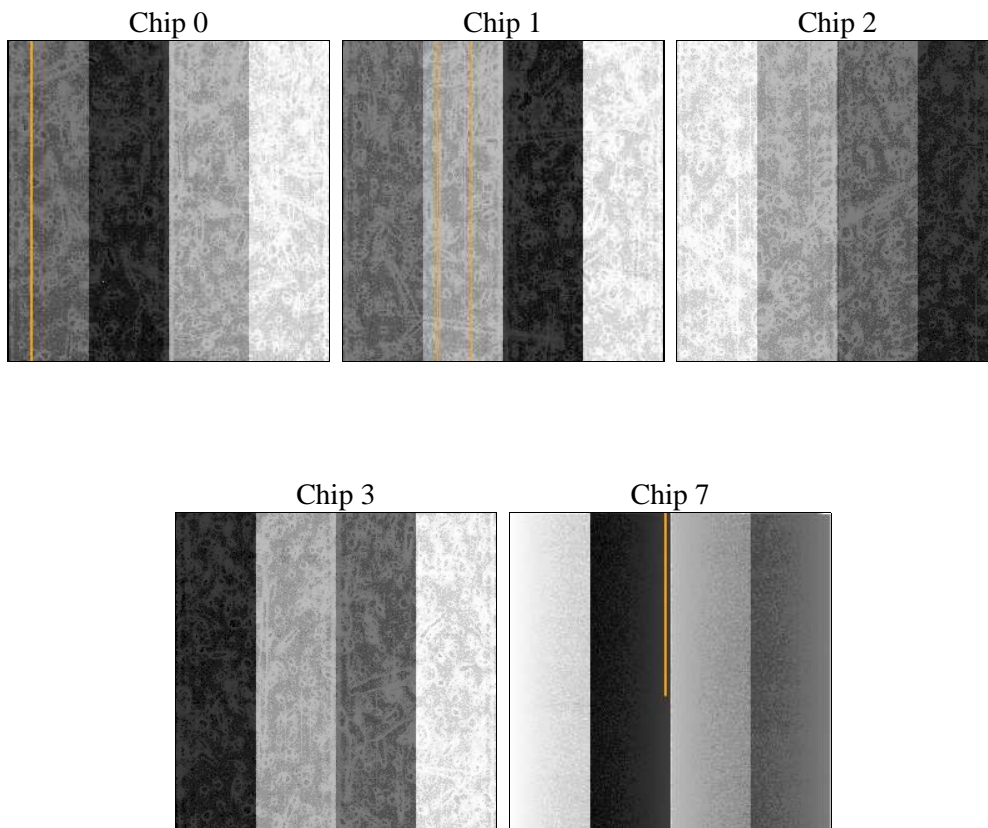
2 OBI

2.1 OBI

2.1.1 Images



2.1.2 Bias



2.1.3 Parameters

obi_num	0	Obi number	sched_exp_time	18816.059000	[s] Scheduled observation exposure time
ascdsver	8.5	Processing system revision	ontime	18984.318012983	Sum of GTIs [s]
caldbver	4.5.4	 	ontime0	18987.458993226	Sum of GTIs [s]
date	2012-12-06T09:21:57	Date and time of file creation	ontime1	18987.458993226	Sum of GTIs [s]
revision	3	Processing version of data	ontime2	18990.599963456	Sum of GTIs [s]
			ontime3	18984.318012983	Sum of GTIs [s]
			ontime7	18990.599963456	Sum of GTIs [s]
			l1events	743434	Number of level 1 events

2.1.4 Events

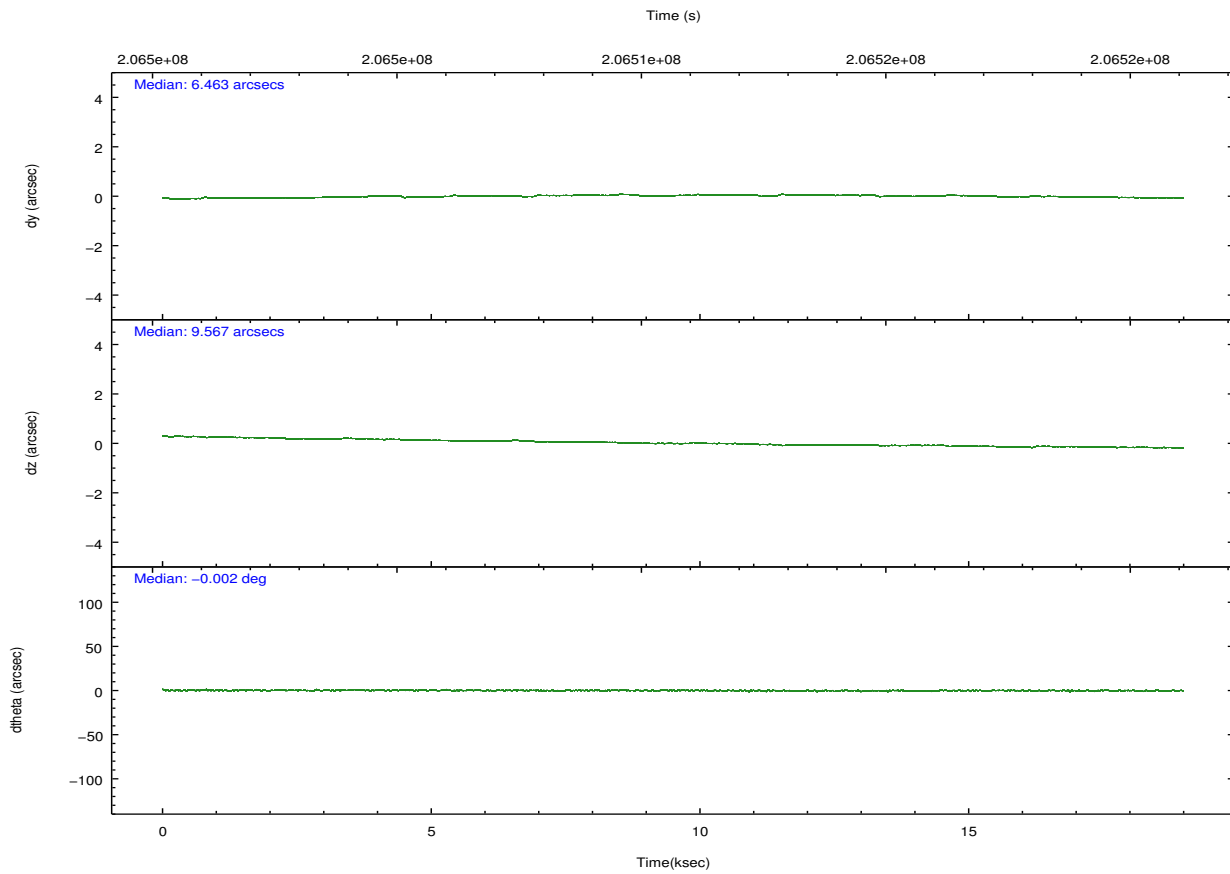
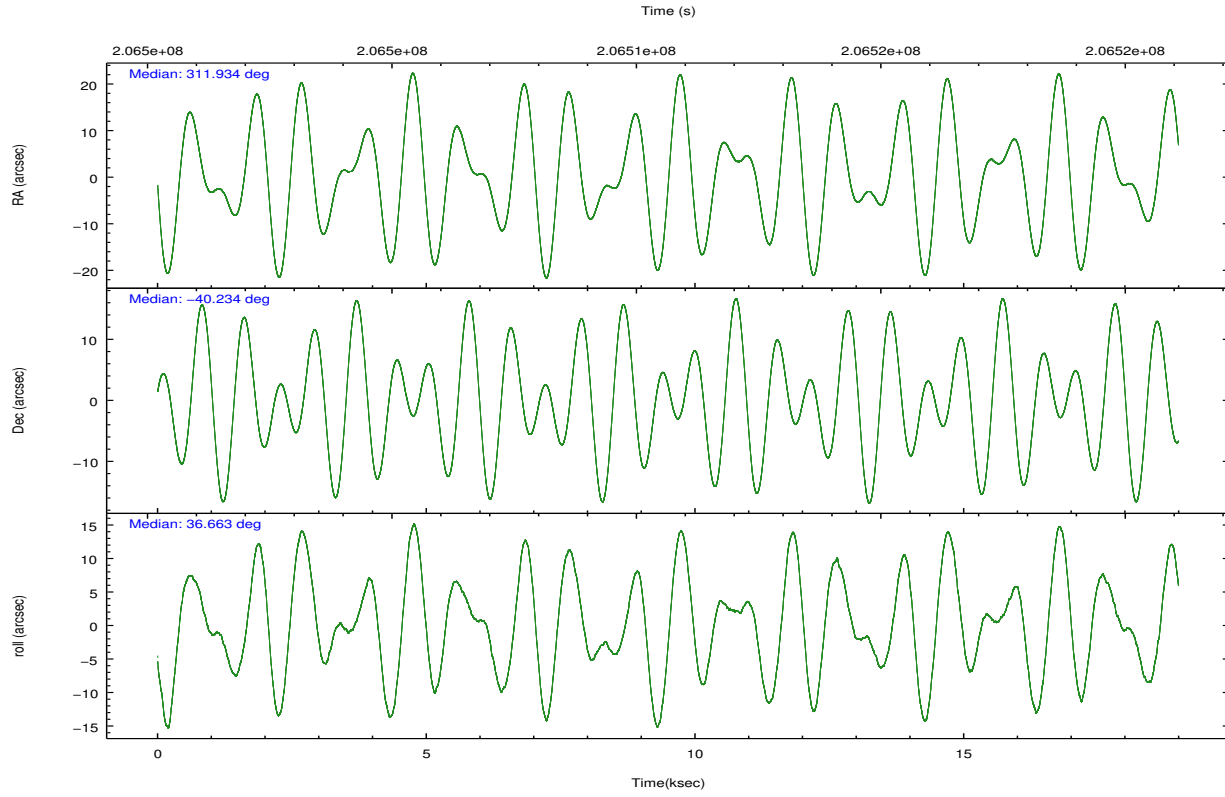
	ccd 0	ccd 1	ccd 2	ccd 3	ccd 7
level 1 events	132637	132161	144495	141056	193085
rejected events	114114	113496	126395	123294	115129
rejected %	86%	85%	87%	87%	59%

	ccd 0	ccd 1	ccd 2	ccd 3	ccd 7
grade 0 events	9003	8244	8924	8618	7165
	6%	6%	6%	6%	3%
grade 1 events	72	77	107	93	171
	0%	0%	0%	0%	0%
grade 2 events	3713	3980	3674	3339	16100
	2%	3%	2%	2%	8%
grade 3 events	1735	1803	1645	1622	6895
	1%	1%	1%	1%	3%
grade 4 events	1598	1808	1621	1743	6930
	1%	1%	1%	1%	3%
grade 5 events	5753	6069	5424	6448	18148
	4%	4%	3%	4%	9%
grade 6 events	3044	3432	2835	3019	43594
	2%	2%	1%	2%	22%
grade 7 events	107719	106748	120265	116174	94082
	81%	80%	83%	82%	48%

2.2 Compared Parameters

Parameter	Planned	Actual	Parameter	Planned	Actual
Instrument	ACIS	ACIS	Obspar format version number	7	7
Detector	ACIS-01237	ACIS-01237	Obspar file type	PREDICTED	ACTUAL
Grating	NONE	NONE	Obspar update status	NONE	UPDATED
Data mode	VFAINT	VFAINT	Number of optional ACIS chips dropped	0	0
Observation mode	POINTING	POINTING	On-chip summing requested	N	N
[deg] Pointing RA	311.919468	311.933558329052	Subarray requested	NONE	NONE
[deg] Pointing Dec	-40.259287	-40.23407676667186	Alternating exposures requested	N	N
[deg] Pointing Roll	36.453523	36.67131098158136	[s] Primary exposure time	0.000000	3.1
[mm] SIM focus pos	-0.782348	-0.7809083437167272			
[mm] SIM defocus	0	0.001439871863259334			
[mm] SIM translation stage pos	-233.592463	-233.5874344608287			
[mm] SIM translation stage offset	0	-0.005018542100998502			
[s] Observation start time (MET)	206501334.184000	206500015.96679			
Observation start date	2004-07-18T01:27:50	2004-07-18T01:06:55			
[s] Observation end time (MET)	206520150.184000	206520386.81769			
Observation end date	2004-07-18T06:41:26	2004-07-18T06:46:26			
Read mode	TIMED	TIMED			

2.3 Aspect



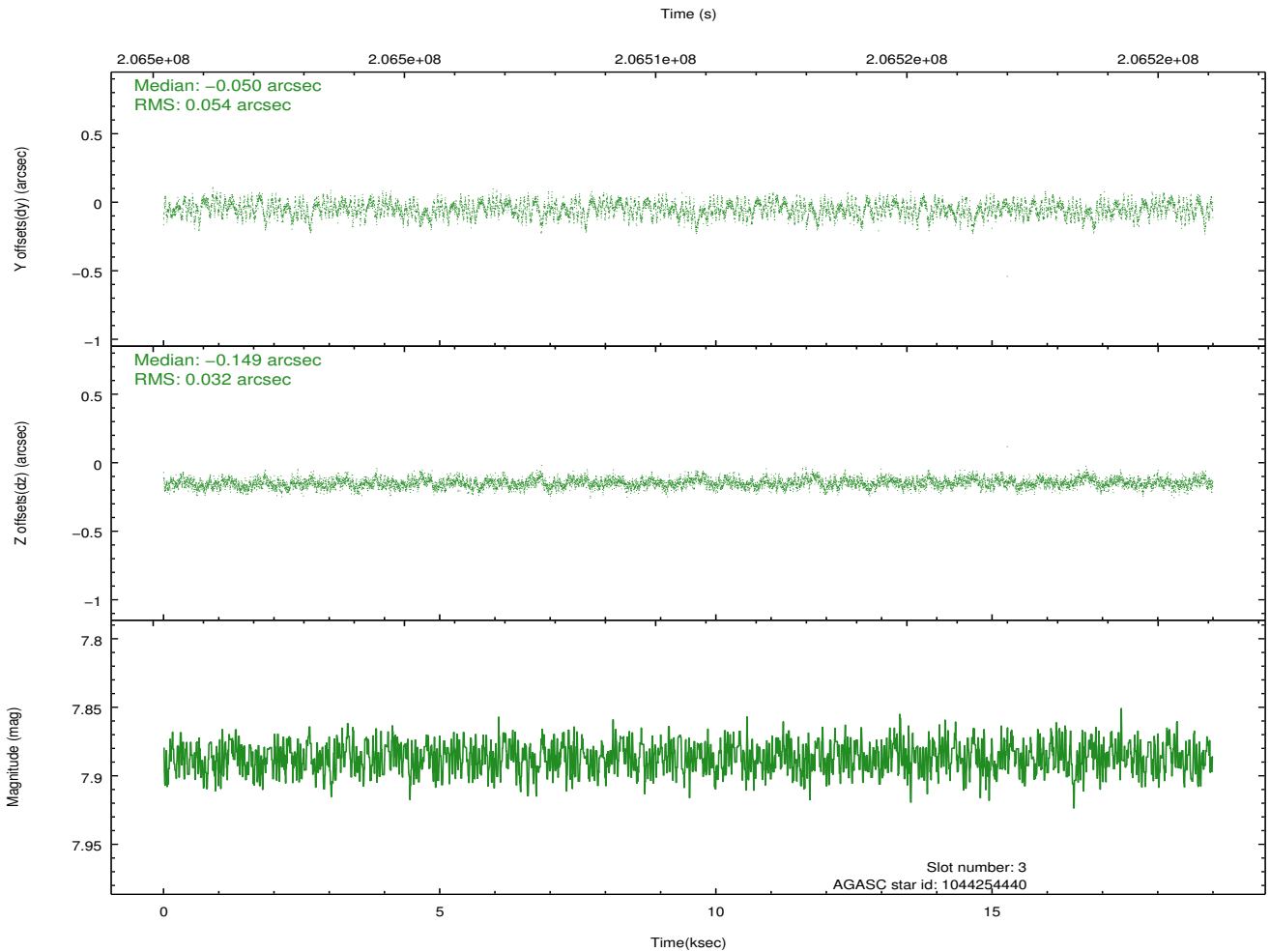
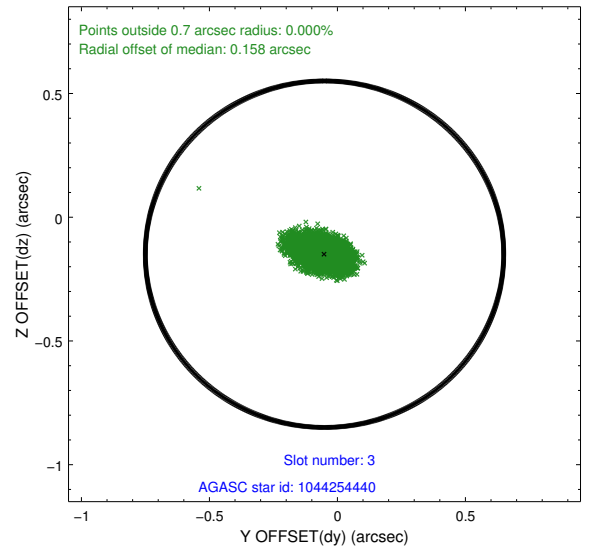
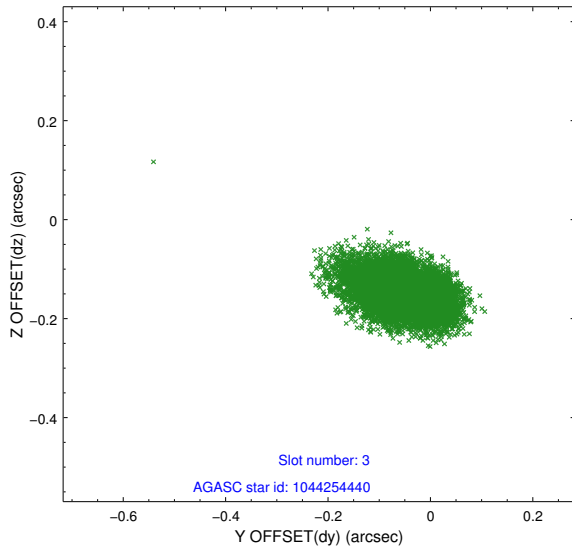
Slot Statistics

slot	status	id	mag	n_pts	med_dy	med_dz	dr1	dr2	ra	dec	mean_y	mean_z
0	FID	ACIS-I-1	7.24	4633	-0.008	0.042	0.007	0.013	0.000000	0.000000	933.24	-833.00
1	FID	ACIS-I-5	7.23	4633	-0.145	0.022	0.006	0.011	0.000000	0.000000	-1814.90	1064.35
2	FID	ACIS-I-6	7.26	4633	0.061	0.006	0.008	0.013	0.000000	0.000000	398.61	1709.08
3	GUIDE	1044254440	7.89	9267	-0.050	-0.149	0.066	0.110	310.924905	-40.060336	-1787.91	2191.77
4	GUIDE	1044256608	9.15	9260	0.099	0.068	0.077	0.127	311.405786	-40.800053	-2285.00	-737.12
5	GUIDE	1044260200	7.39	9267	-0.016	-0.115	0.060	0.091	312.080069	-40.001195	907.90	483.77
6	GUIDE	1044260208	9.18	9262	0.065	0.081	0.084	0.136	311.587523	-40.801920	-1888.86	-1035.12
7	GUIDE	1044388888	9.00	9258	-0.098	0.115	0.086	0.140	312.593988	-40.608474	730.36	-2113.16

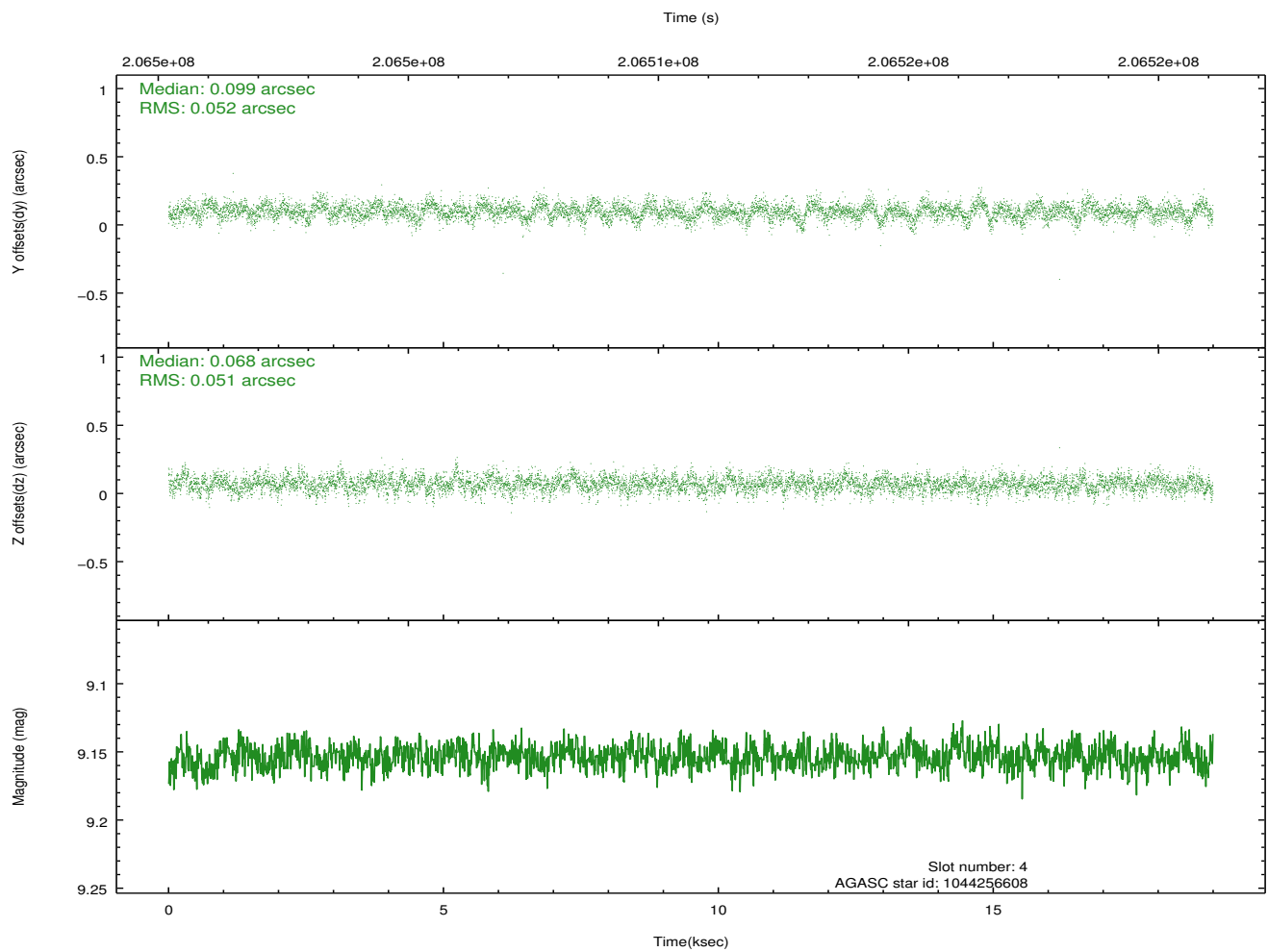
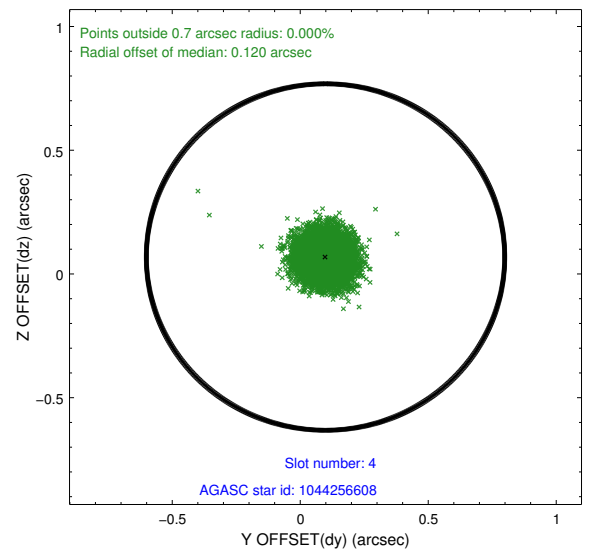
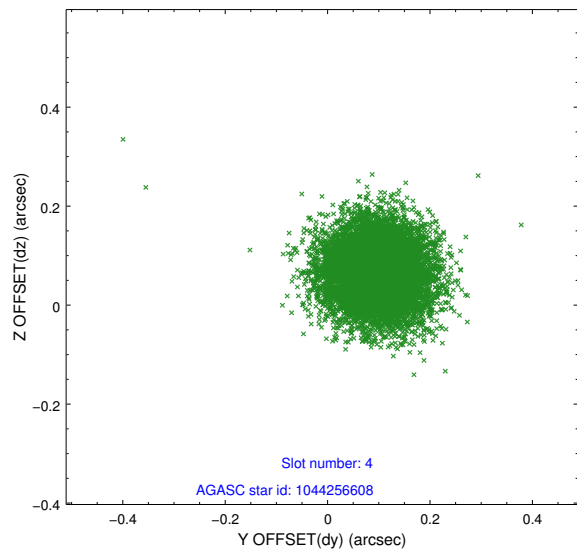
∞

2.4 Star Slots

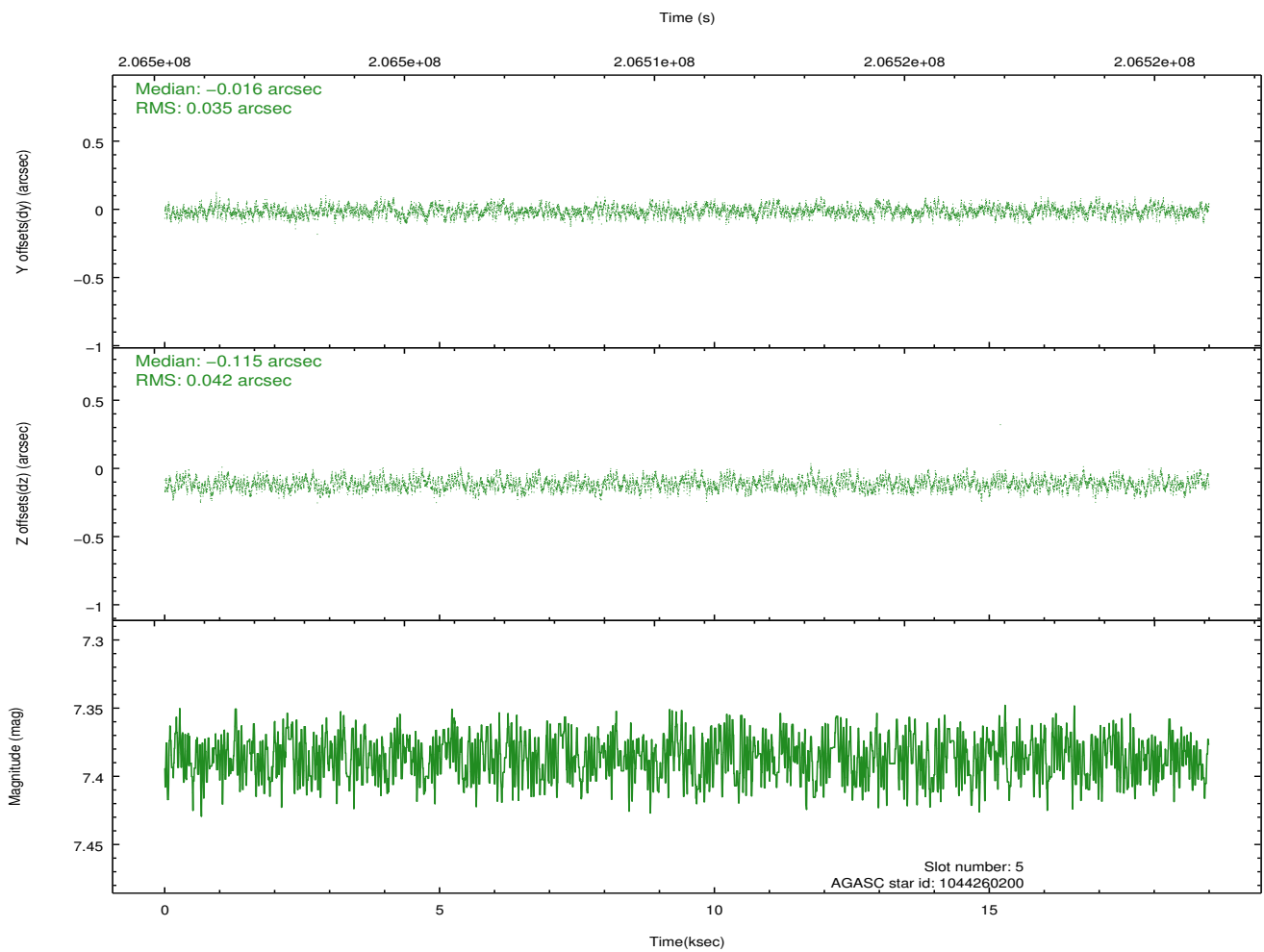
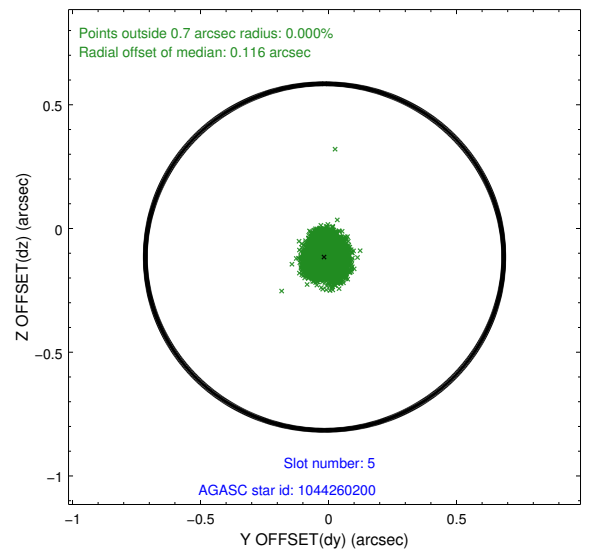
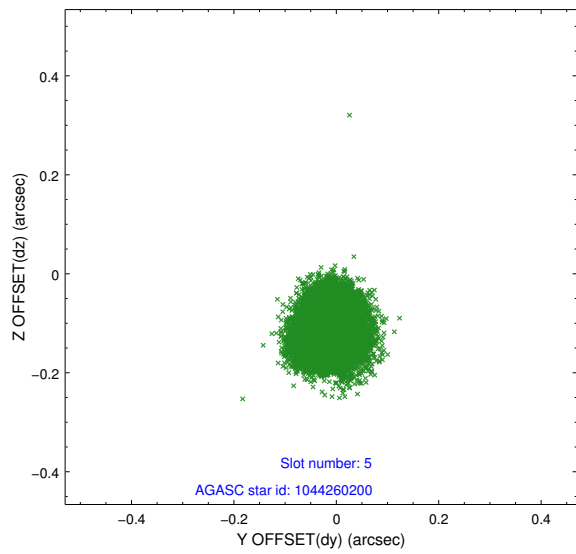
2.4.1 Slot 3



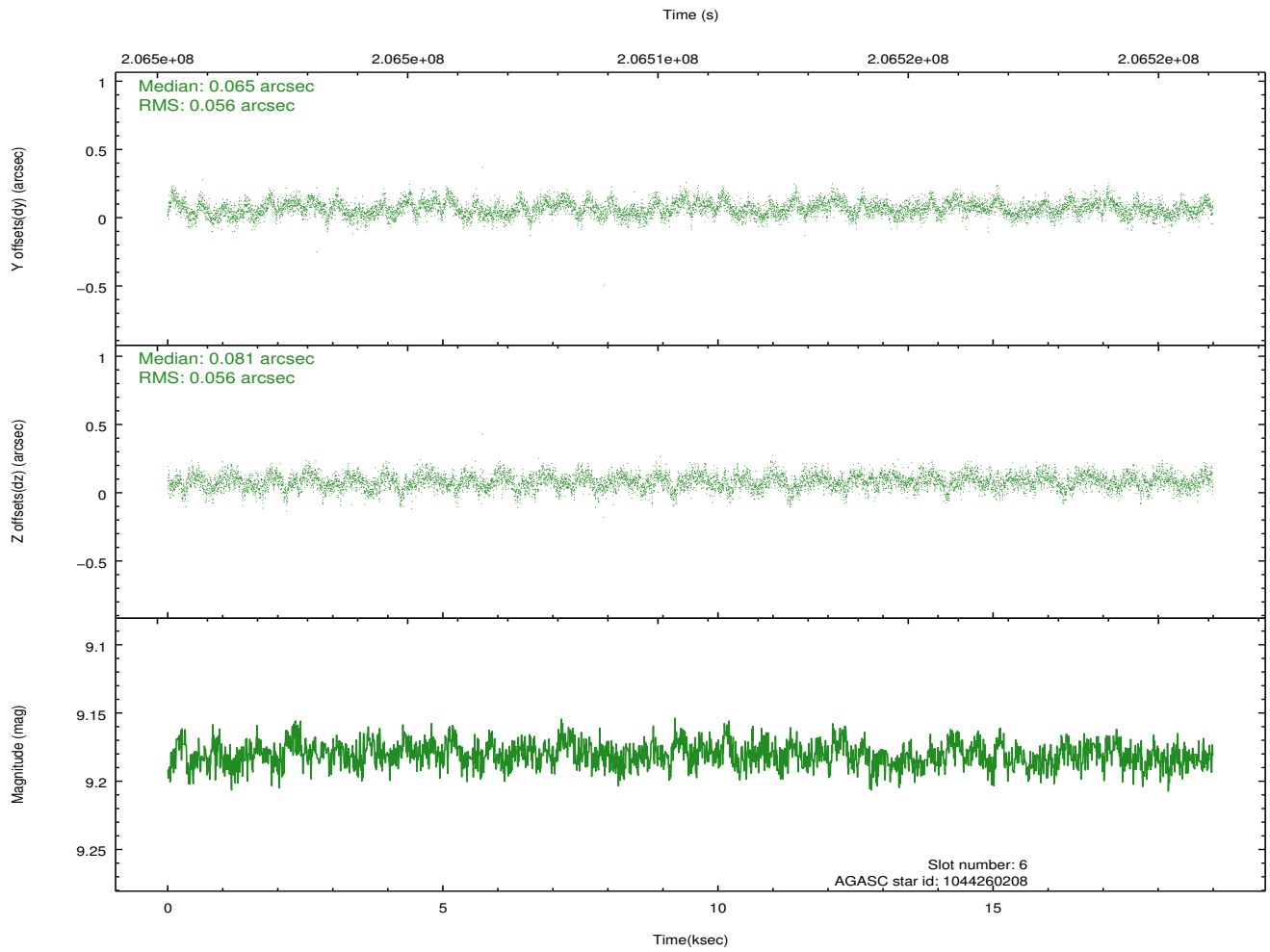
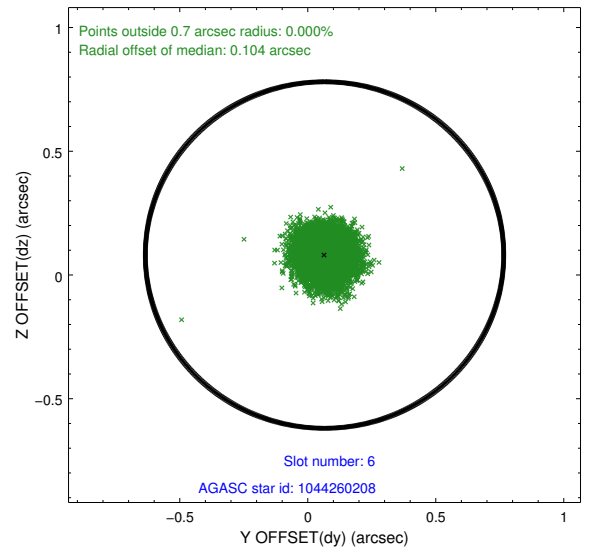
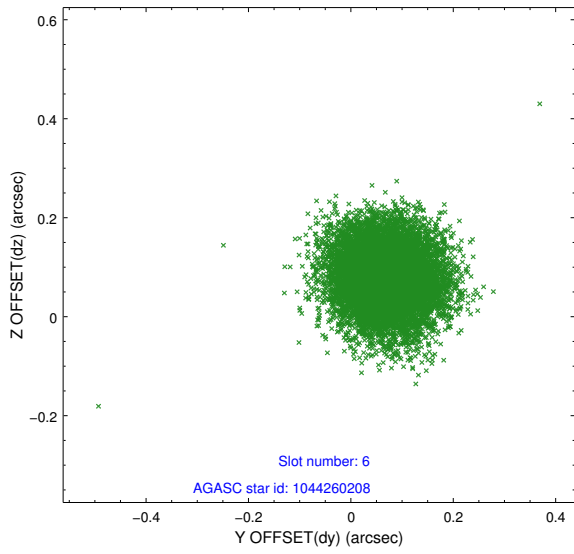
2.4.2 Slot 4



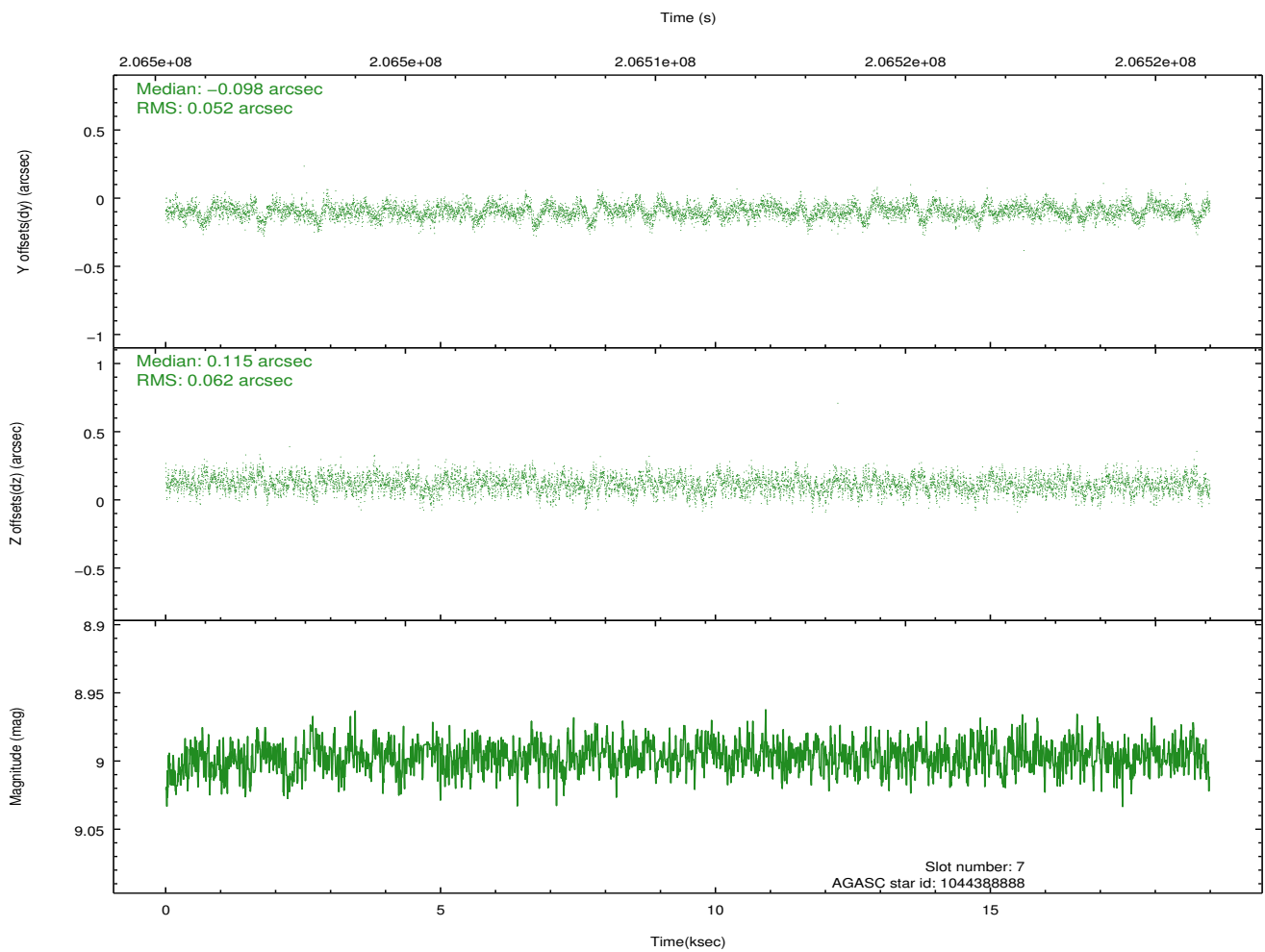
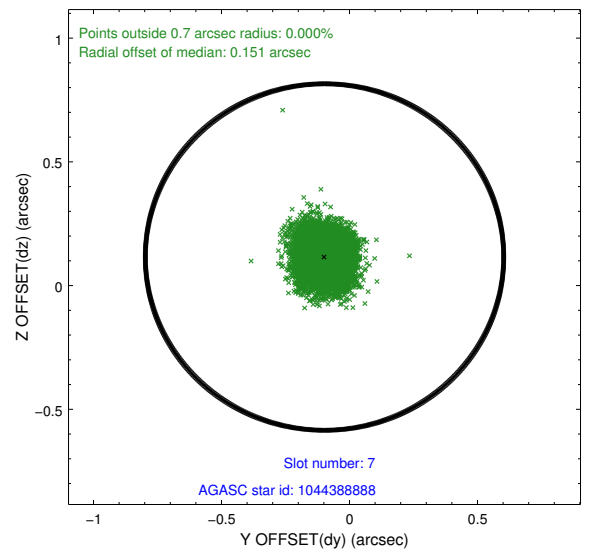
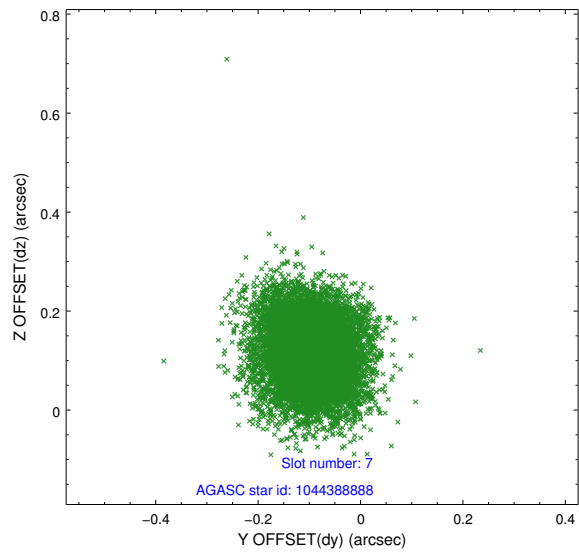
2.4.3 Slot 5



2.4.4 Slot 6

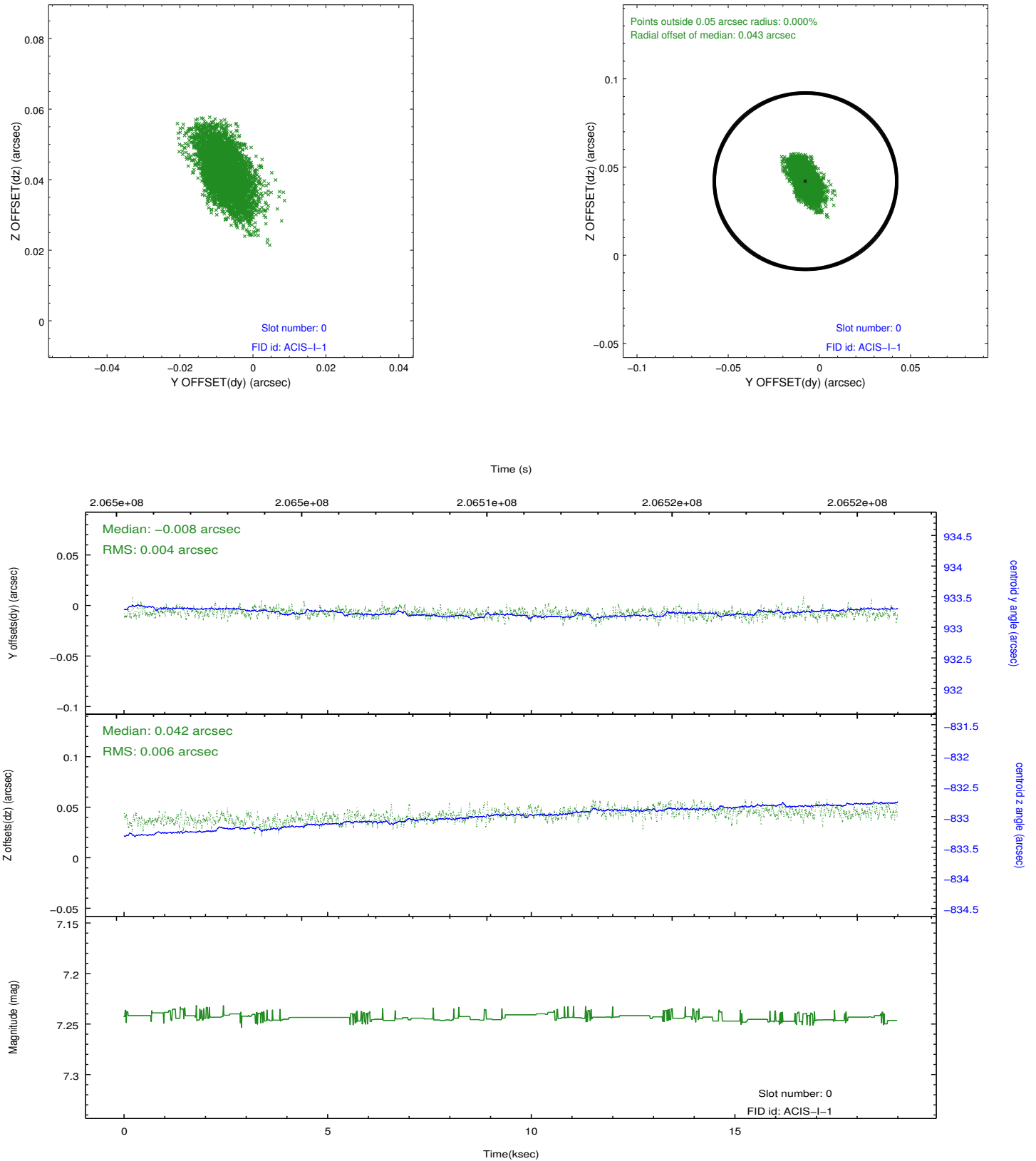


2.4.5 Slot 7

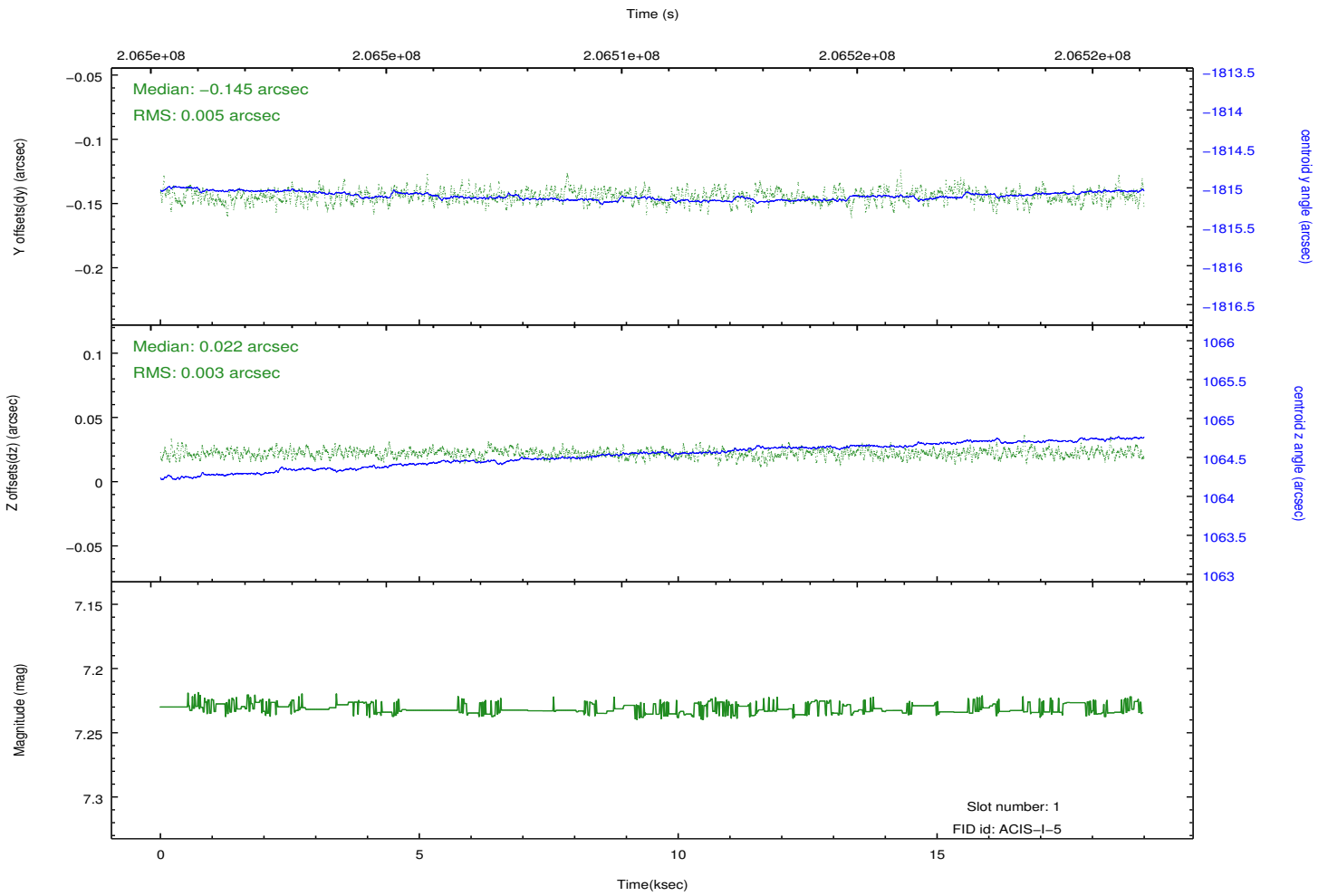
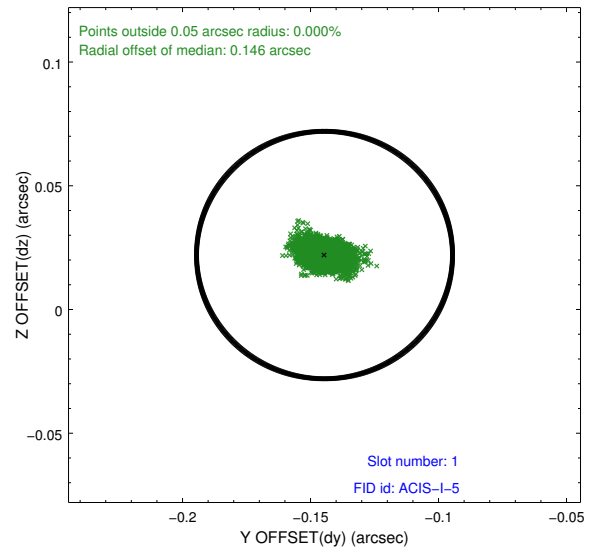
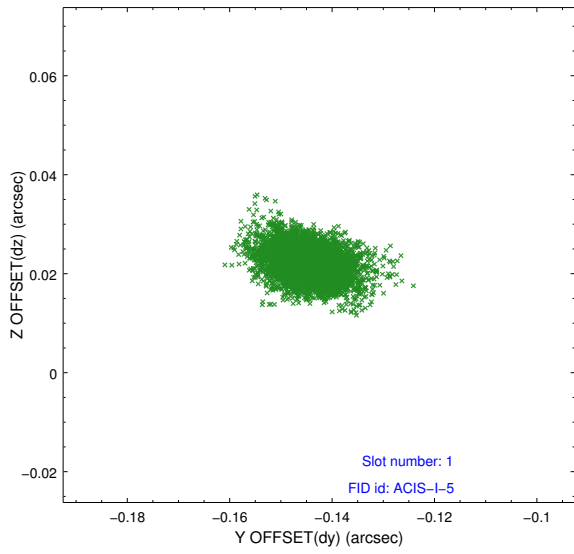


2.5 FID Slots

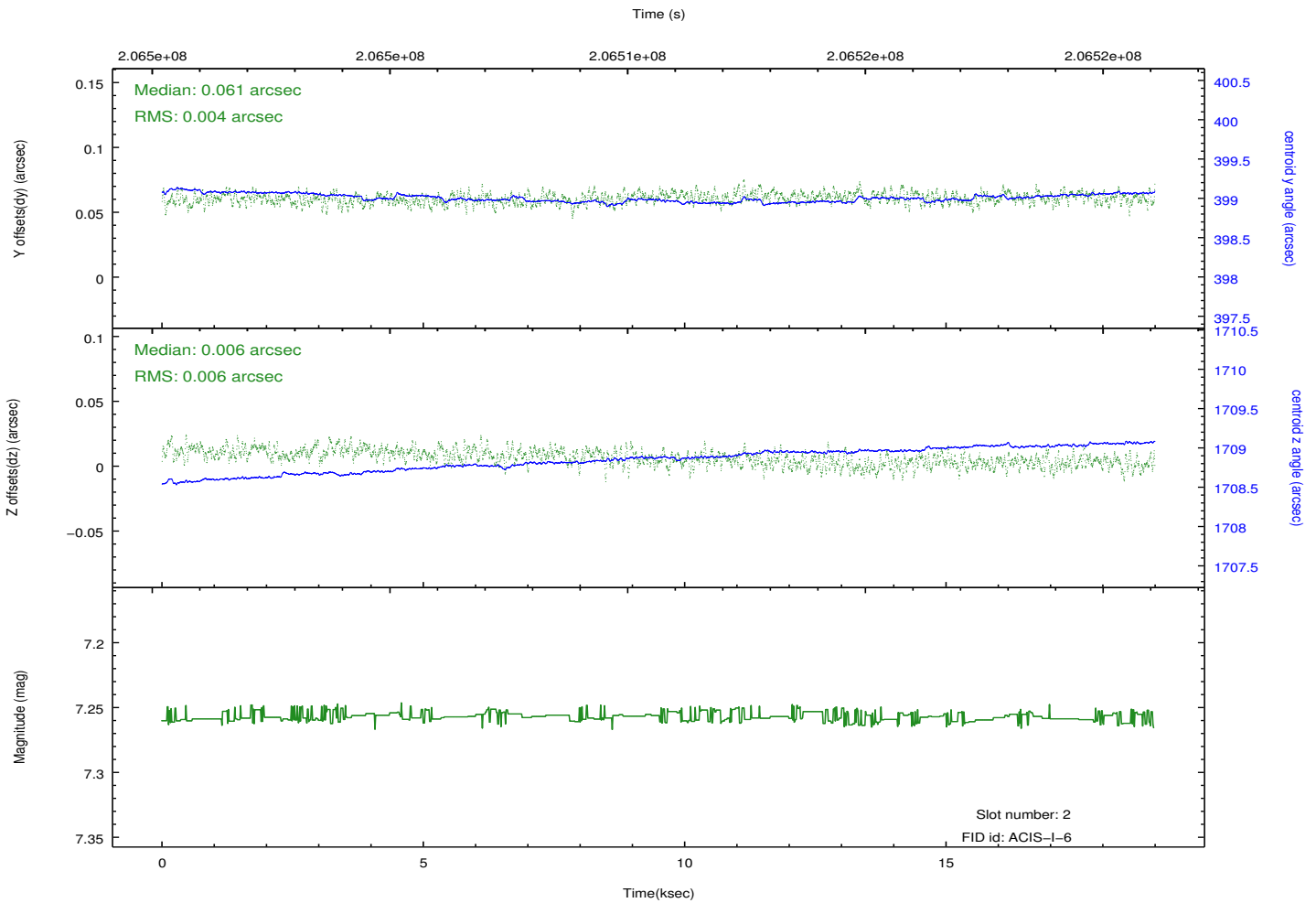
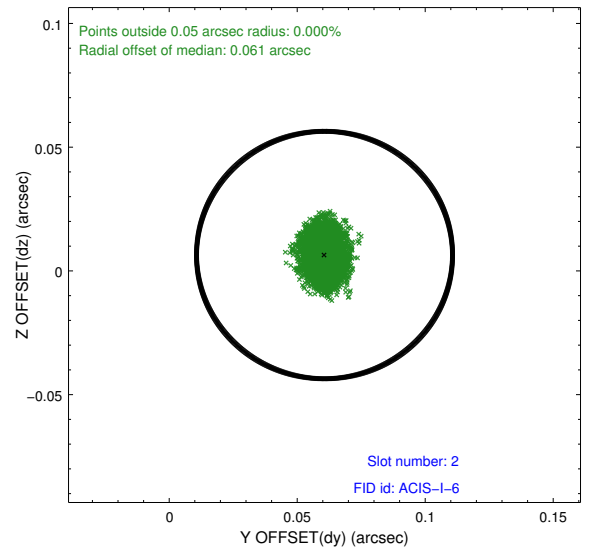
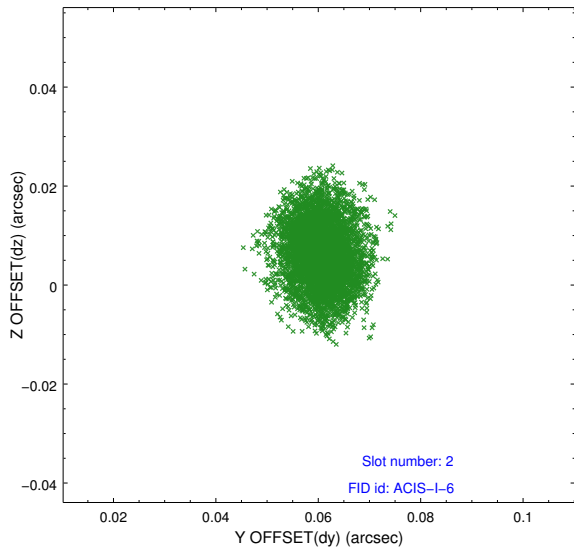
2.5.1 Slot 0



2.5.2 Slot 1



2.5.3 Slot 2



A Summary

A.1 Status

V&V Scientist	Joy Nichols
V&V Date (YYYY-MM-DD)	2013.01.17
V&V Edition	1
V&V Disposition and Status	OK
V&V Charge Time	18.99

A.2 Comments

A custom dither of 11.988 arcsec was used to mitigate the inter-chip gap space, since the coordinates are poorly known.