

V&V Reference Report

L2 ASCDS Version : 8.5.1.1

Observation 5442 - L2 Version 3
Chandra X-Ray Center

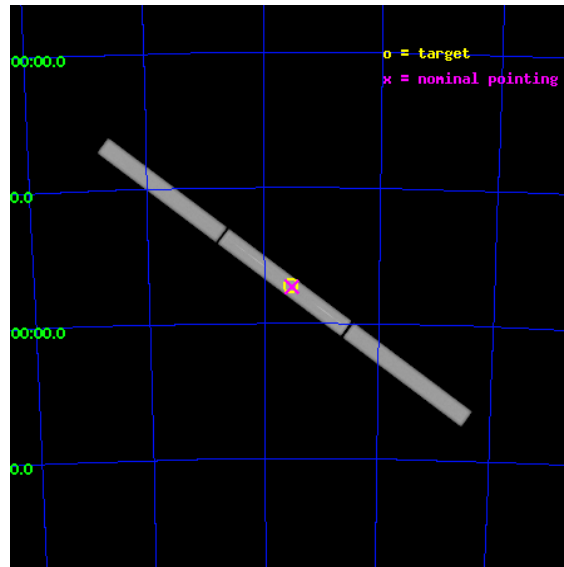
L2 Processing Date : Dec 23 2012

Contents

1	Front	2
2	OBI	3
2.1	OBI	3
2.1.1	Images	3
2.1.2	Parameters	4
2.1.3	Events	4
2.2	Compared Parameters	5
2.3	Aspect	6
2.4	Star Slots	9
2.4.1	Slot 3	9
2.4.2	Slot 4	10
2.4.3	Slot 5	11
2.4.4	Slot 6	12
2.4.5	Slot 7	13
2.5	FID Slots	14
2.5.1	Slot 0	14
2.5.2	Slot 1	15
2.5.3	Slot 2	16
3	Gratings	17
3.1	LETG Arm	17
A	Summary	19
A.1	Status	19
A.2	Comments	19

1 Front

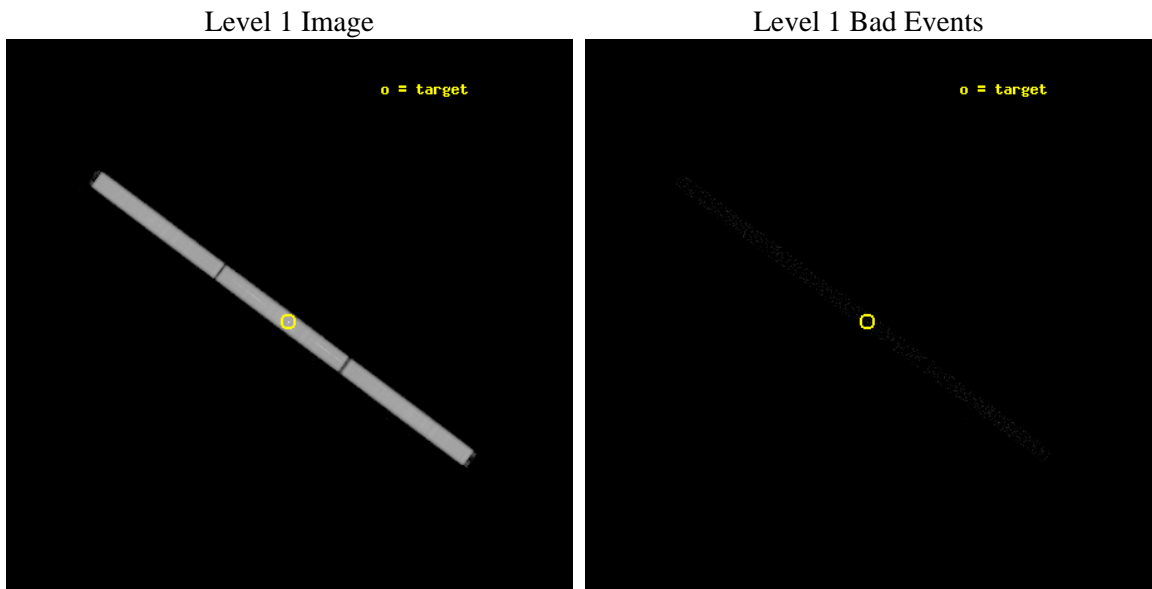
seq_num	300158	Sequence number
obs_id	5442	Observation id
title	Testing Accretion Scenarios at the Eddington Limit	Proposal title
observer	Dr. Vadim Burwitz	Principal investigator
object	RXJ0513.9-6951	Source name
ra_targ	78.461667	Observer's specified target RA [deg]
dec_targ	-69.863056	Observer's specified target Dec [deg]
ra_nom	78.45041703507	Nominal RA [deg]
dec_nom	-69.86572815219	Nominal Dec [deg]
roll_nom	216.52243703884	Nominal Roll [deg]
revision	3	Processing version of data
ontime	25679.582419336	[s]
livetime	25495.258208997	Ontime multiplied by DTCOR
l2events	1502108	Number of level 2 events



2 OBI

2.1 OBI

2.1.1 Images



2.1.2 Parameters

obi_num	0	Obi number	sched_exp_time	25500.000000	[s] Scheduled observation exposure time
ascdsver	8.5.1.1	Processing system revision	ontime	25679.582419336	[s]
caldbver	4.5.5	 	l1events	2105246	Number of level 1 events
date	2012-12-23T02:54:15	Date and time of file creation			
revision	3	Processing version of data			

2.1.3 Events

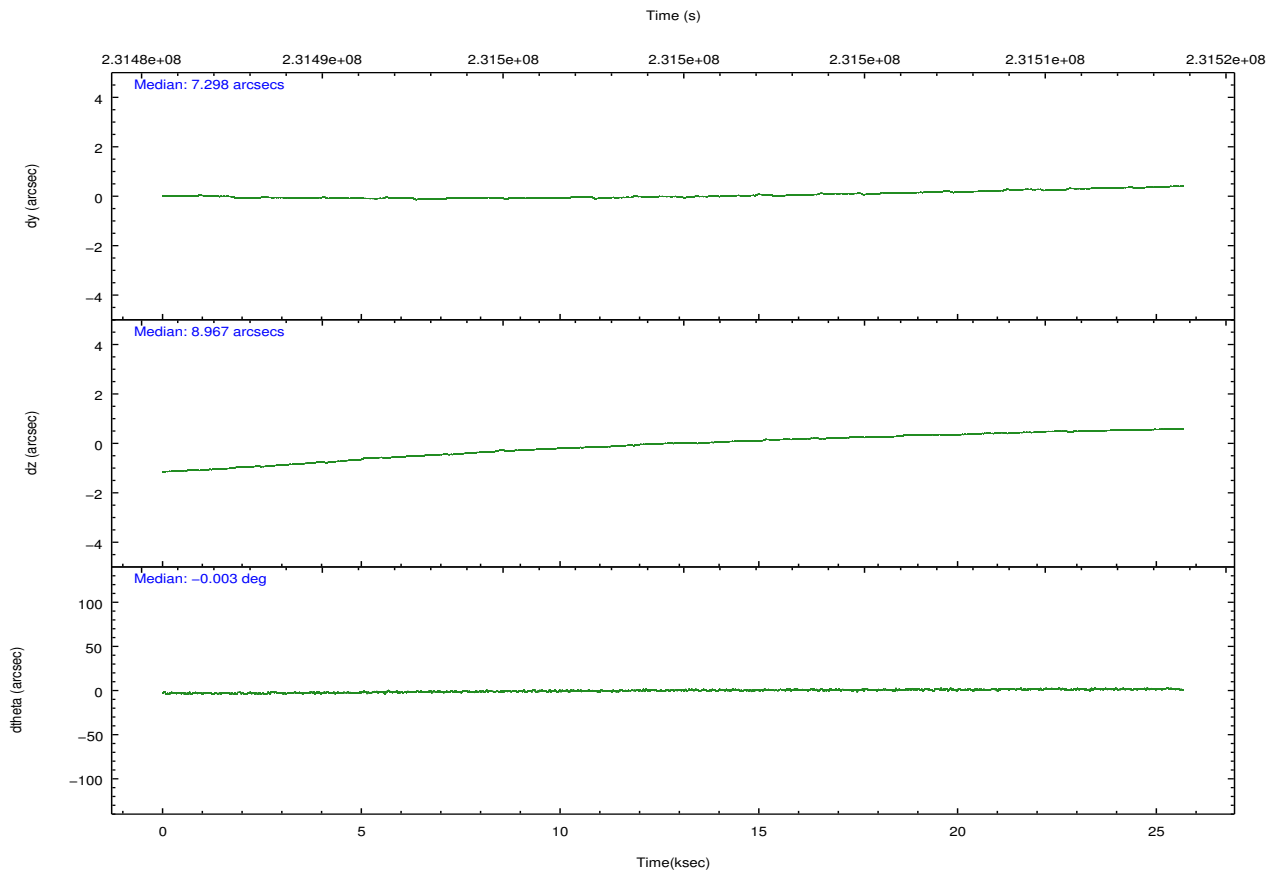
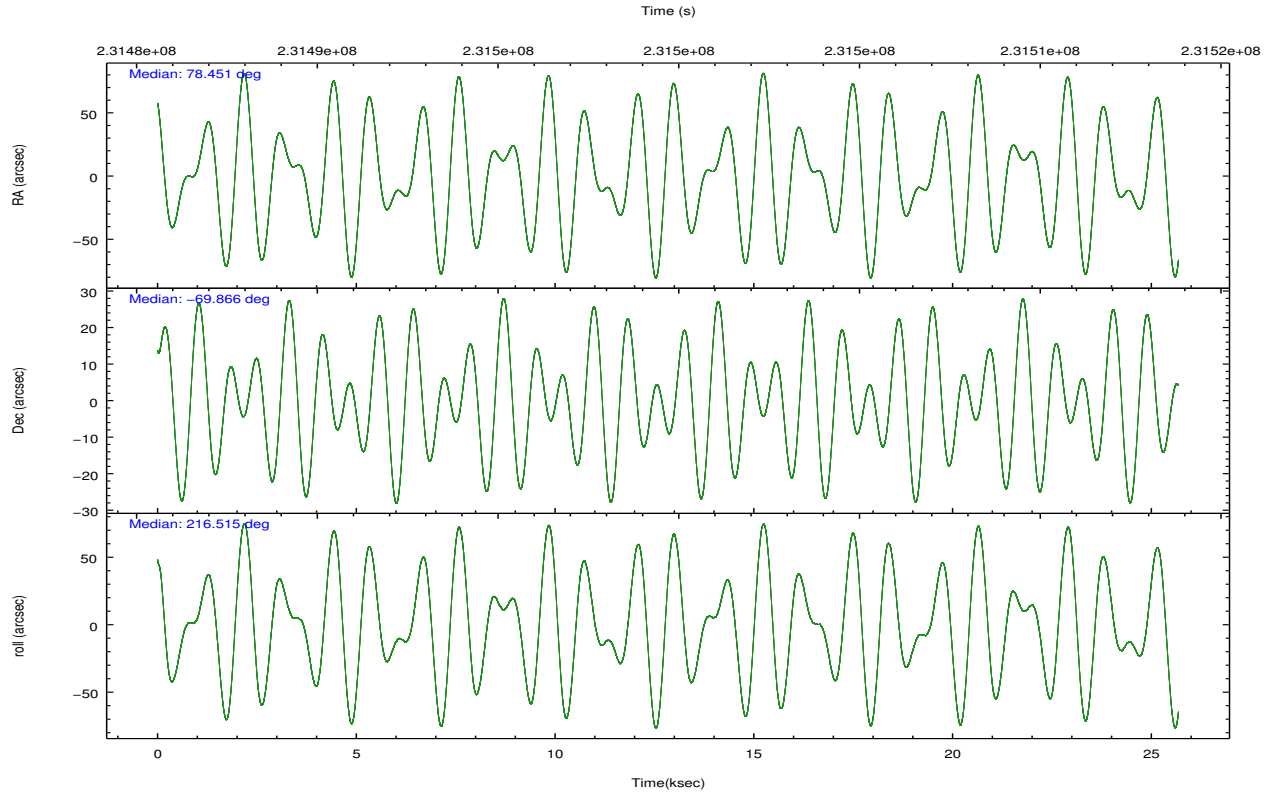
Level 1 Events

	segment 1	segment 2	segment 3
level 1 events	697498	708276	699472
rejected events	23853	23318	24276
rejected %	3%	3%	3%

2.2 Compared Parameters

Parameter	Planned	Actual	Parameter	Planned	Actual
Instrument	HRC	HRC	Obspar format version number	7	7
Detector	HRC-S	HRC-S	Obspar file type	PREDICTED	ACTUAL
Grating	LETG	LETG	Obspar update status	NONE	UPDATED
Data mode	OBSERVING	OBSERVING			
Observation mode	POINTING	POINTING			
[deg] Pointing RA	78.479760	78.45041703506985			
[deg] Pointing Dec	-69.838965	-69.8657281521905			
[deg] Pointing Roll	216.482658	216.5224370388415			
[mm] SIM focus pos	-1.429586	-1.428180813131781			
[mm] SIM defocus	0.1037507710433287	0.1051558262725154			
[mm] SIM translation stage pos	250.455976	250.466033080201			
[mm] SIM translation stage offset	0	-0.01005468664627074			
[s] Observation start time (MET)	231487046.184000	231486028.50291			
Observation start date	2005-05-03T05:56:22	2005-05-03T05:40:28			
[s] Observation end time (MET)	231512546.184000	231513532.84166			
Observation end date	2005-05-03T13:01:22	2005-05-03T13:18:52			

2.3 Aspect

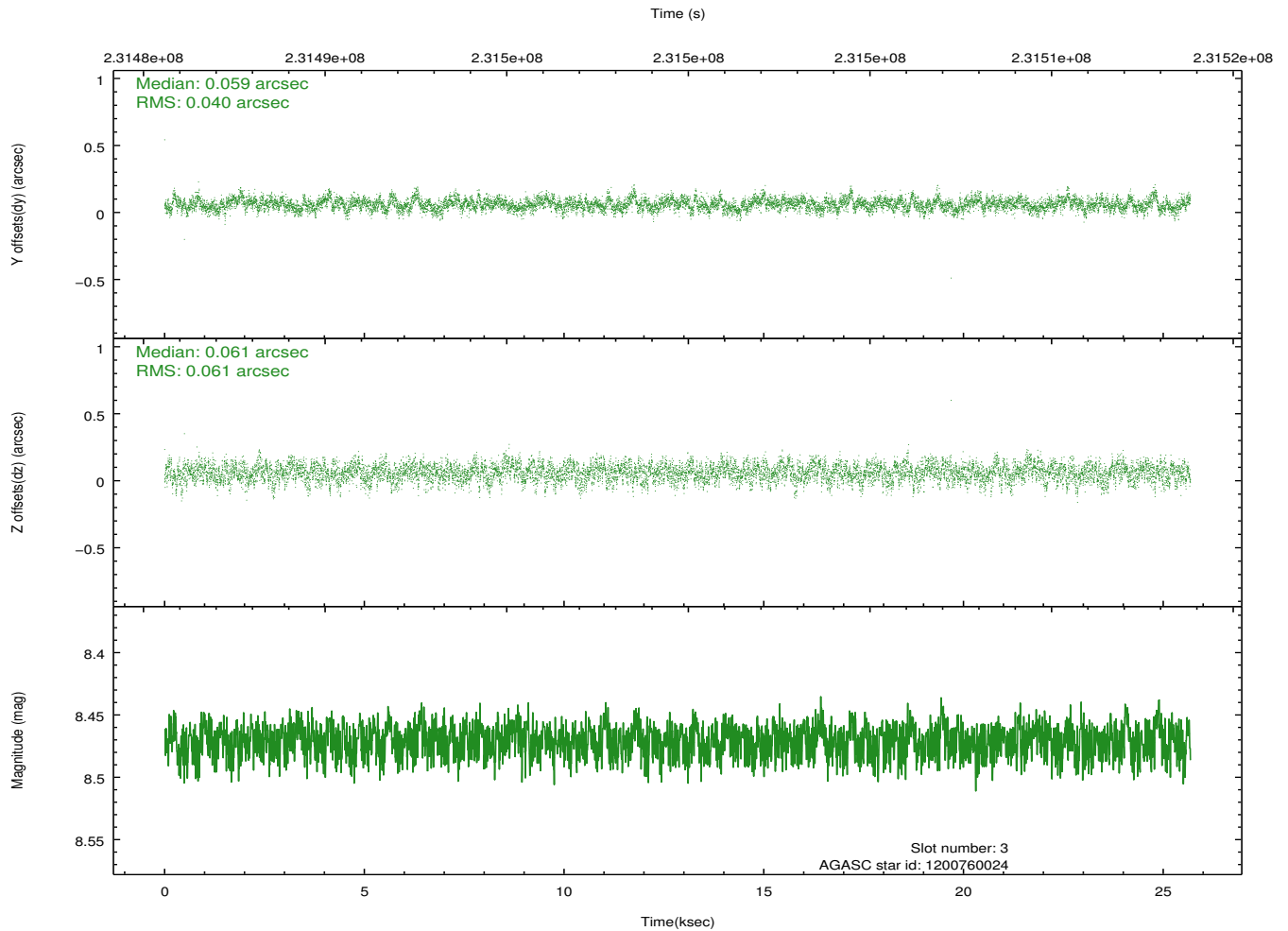
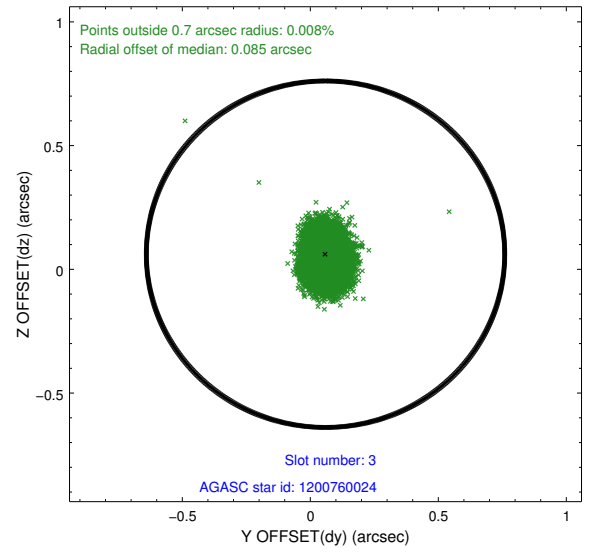
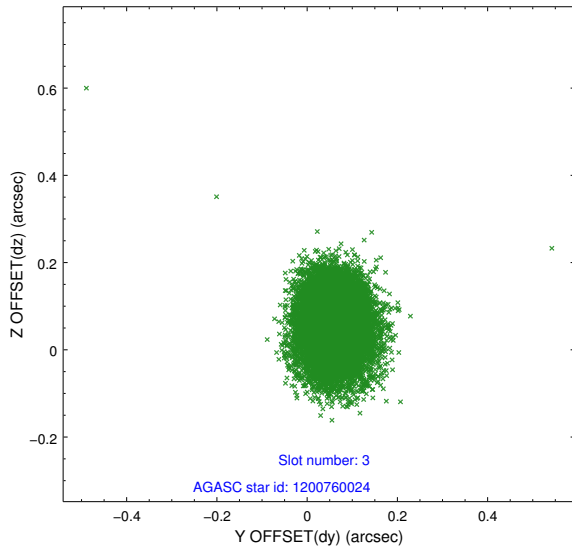


Slot Statistics

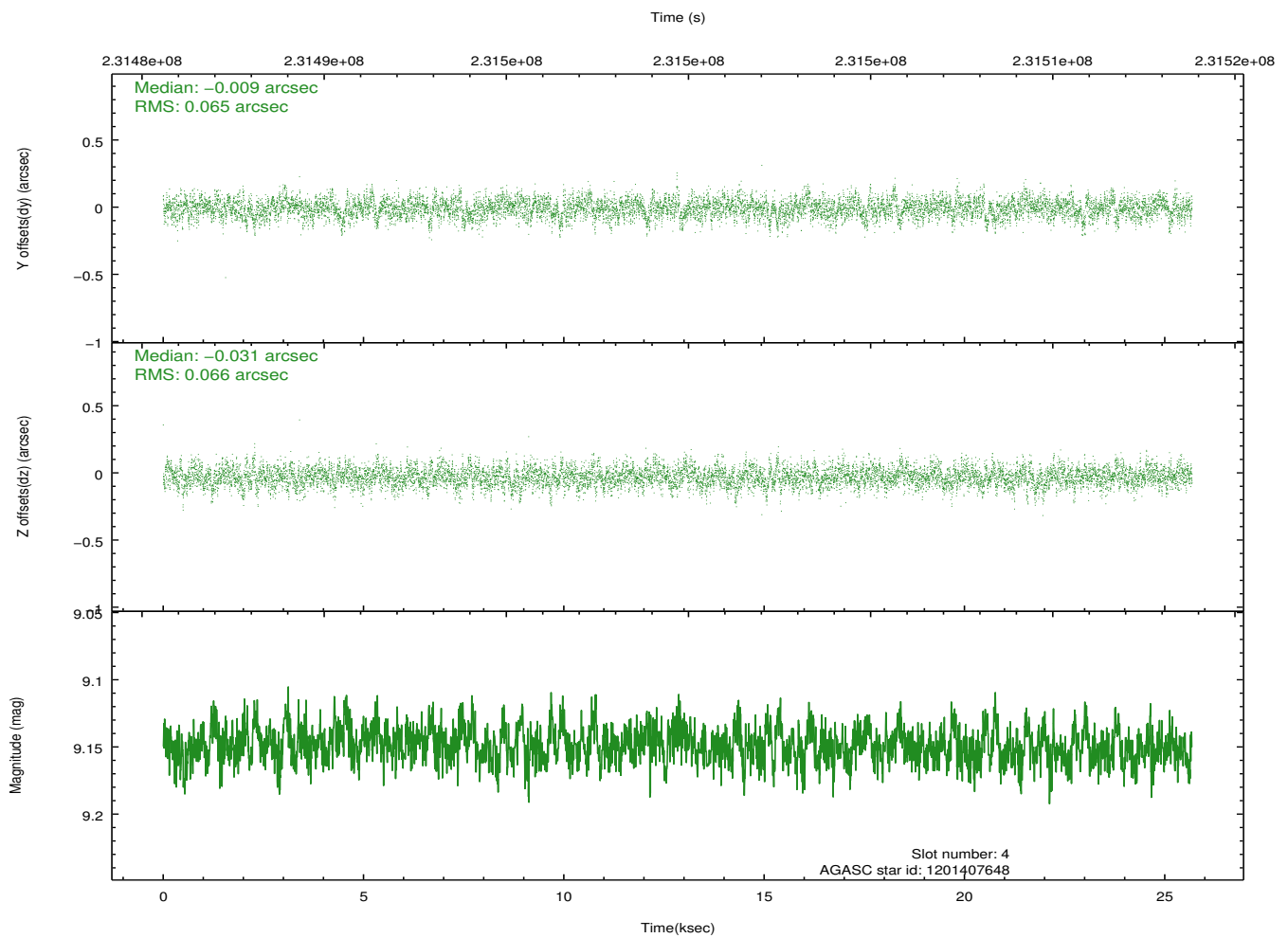
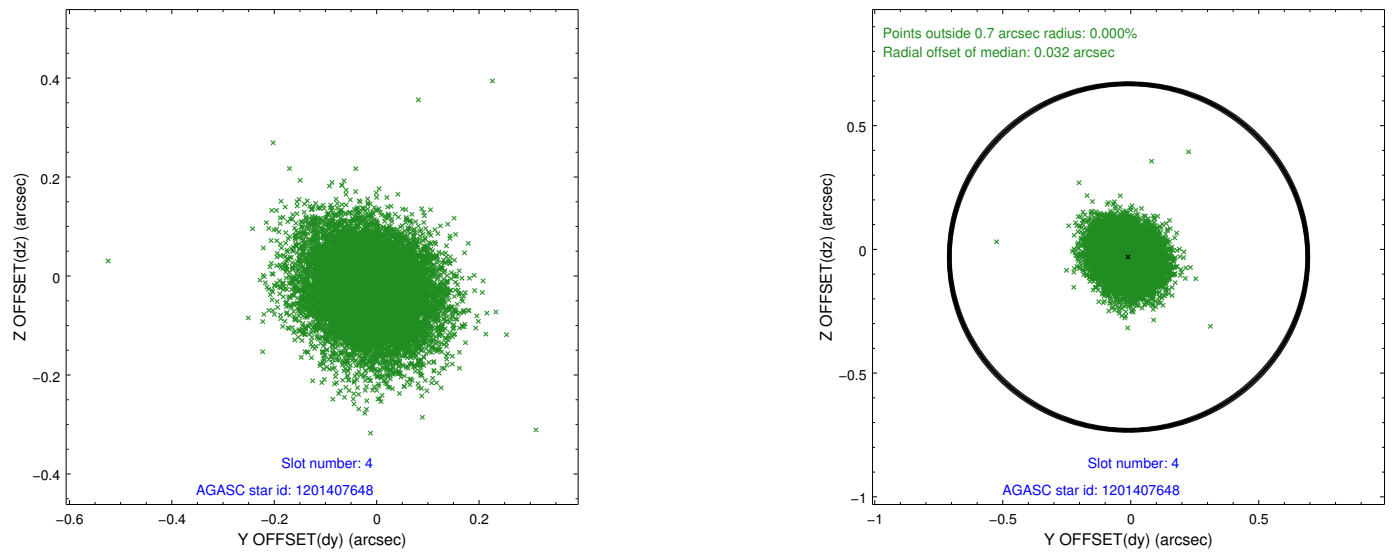
slot	status	id	mag	n_pts	med_dy	med_dz	dr1	dr2	ra	dec	mean_y	mean_z
0	FID	HRC-S-1	7.03	6262	0.128	-0.159	0.027	0.044	0.000000	0.000000	-1161.52	-457.50
1	FID	HRC-S-2	7.02	6264	0.161	-0.113	0.005	0.009	0.000000	0.000000	1238.01	-450.17
2	FID	HRC-S-3	7.04	6264	0.101	-0.030	0.029	0.047	0.000000	0.000000	-1164.07	572.08
3	GUIDE	1200760024	8.47	12524	0.059	0.061	0.076	0.126	77.625244	-69.320410	-231.50	-2140.41
4	GUIDE	1201407648	9.15	12525	-0.009	-0.031	0.097	0.161	78.636737	-70.585025	1446.02	2271.57
5	GUIDE	1200888464	9.48	12521	-0.069	0.046	0.115	0.189	78.430687	-69.005633	-1732.32	-2449.53
6	GUIDE	1201280072	8.54	12520	0.076	0.031	0.063	0.103	77.357470	-69.714246	866.89	-1183.44
7	GUIDE	1201411776	8.86	12525	-0.056	-0.103	0.108	0.167	79.010603	-70.456328	808.93	2169.37

2.4 Star Slots

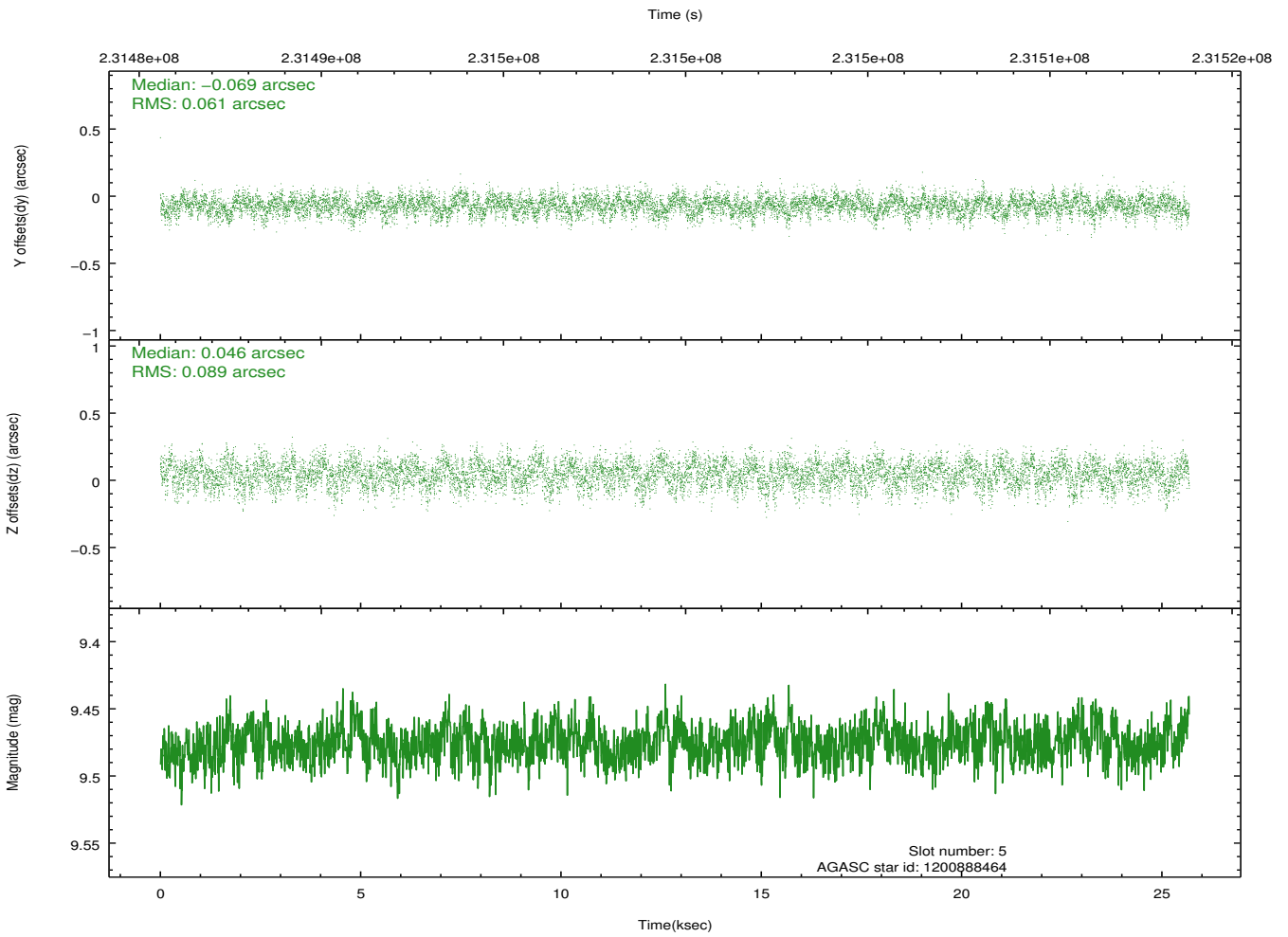
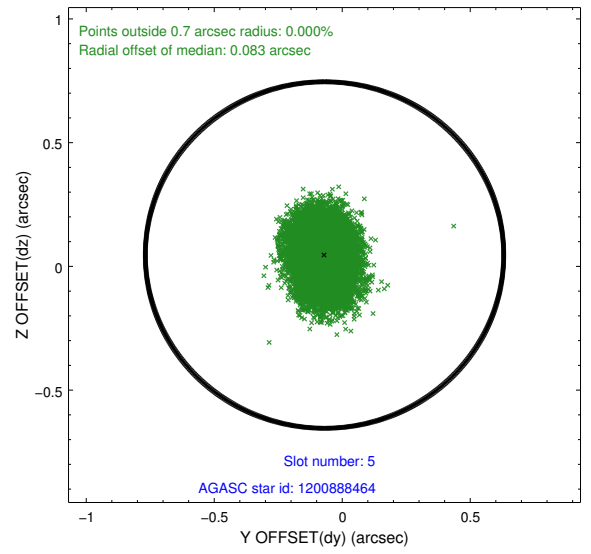
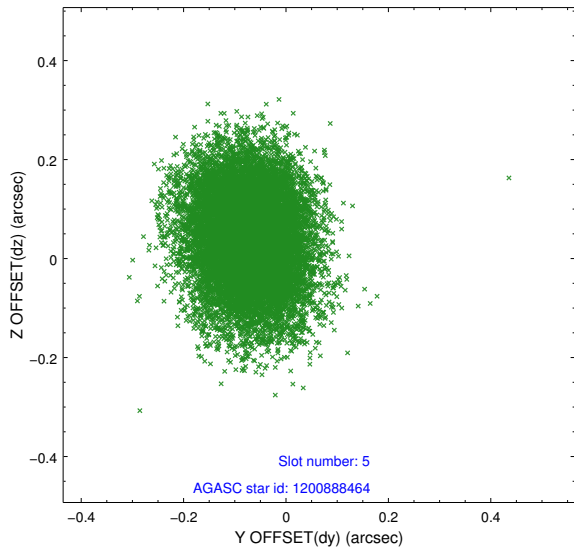
2.4.1 Slot 3



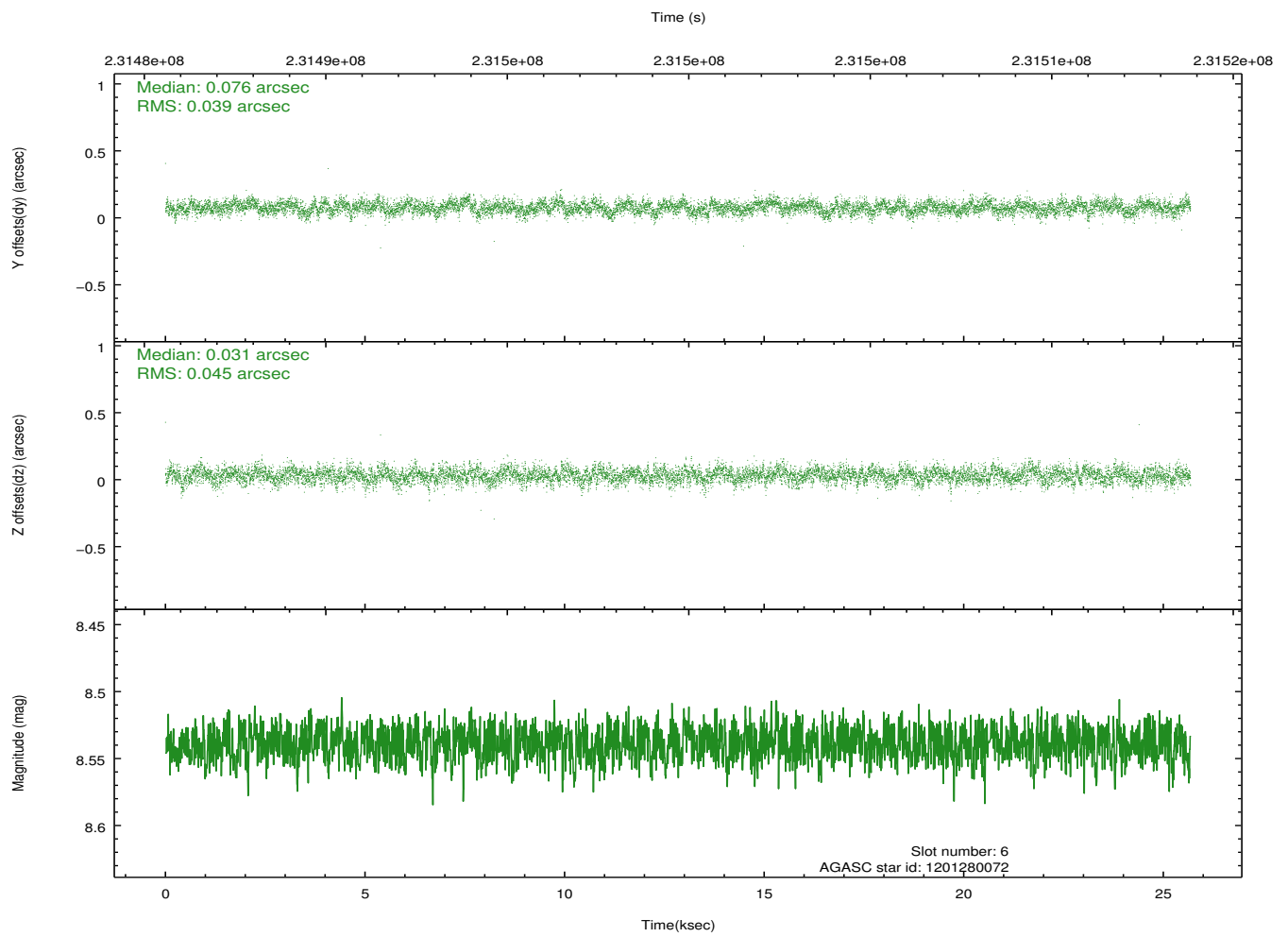
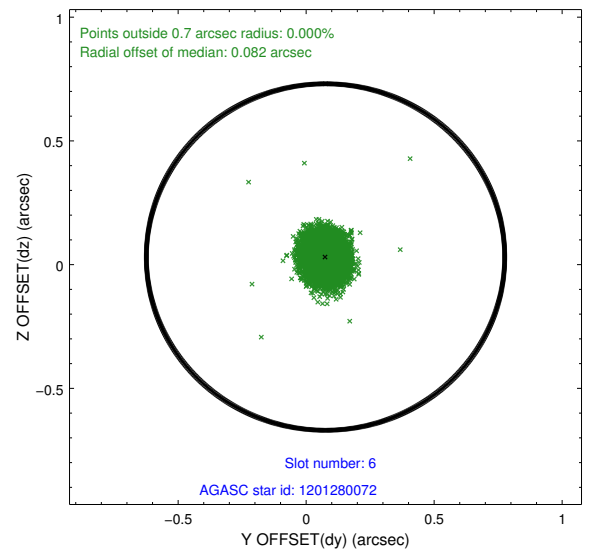
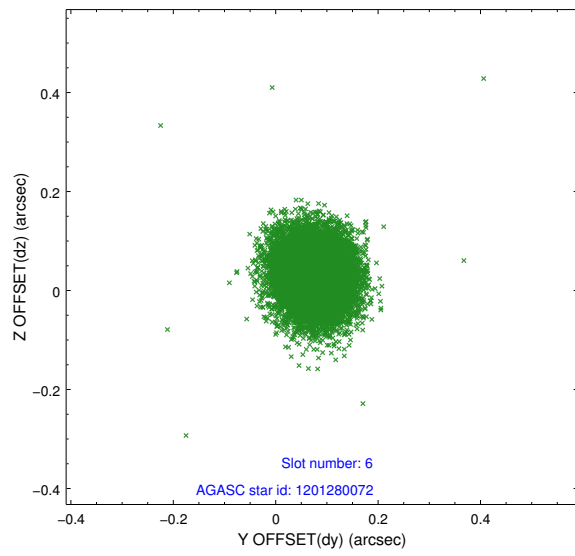
2.4.2 Slot 4



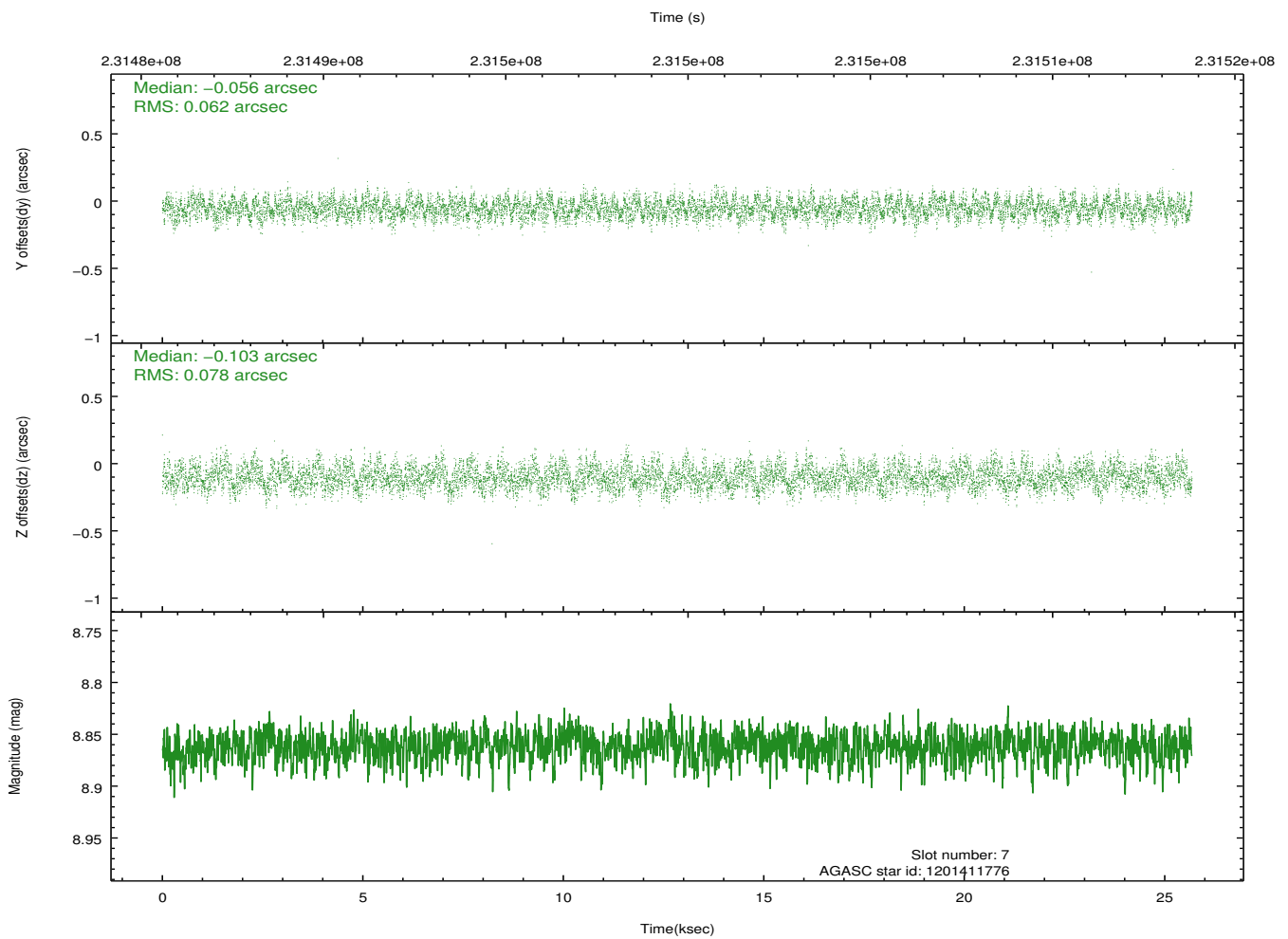
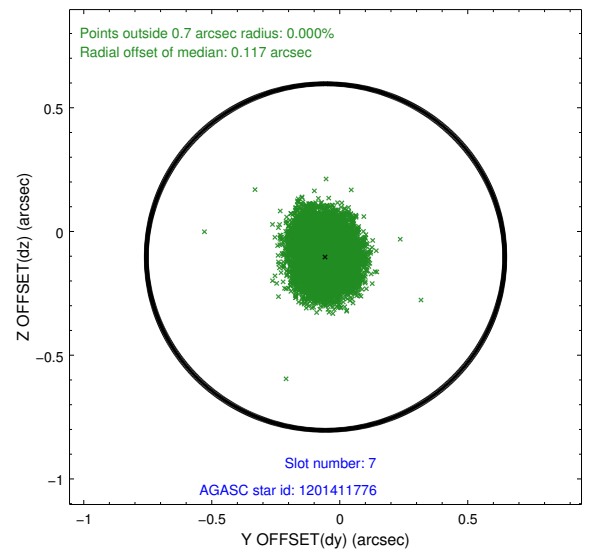
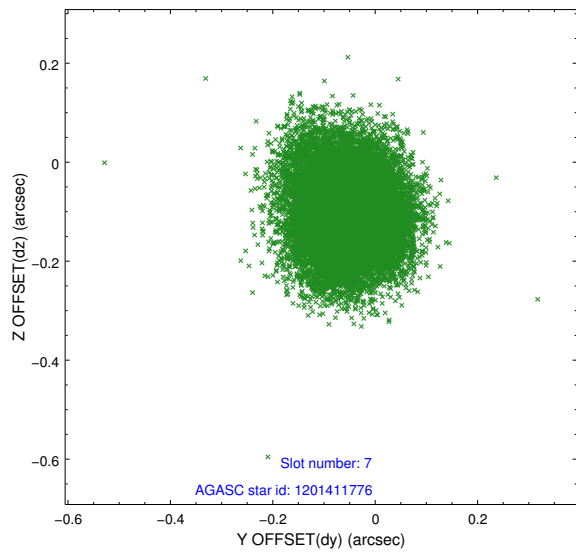
2.4.3 Slot 5



2.4.4 Slot 6

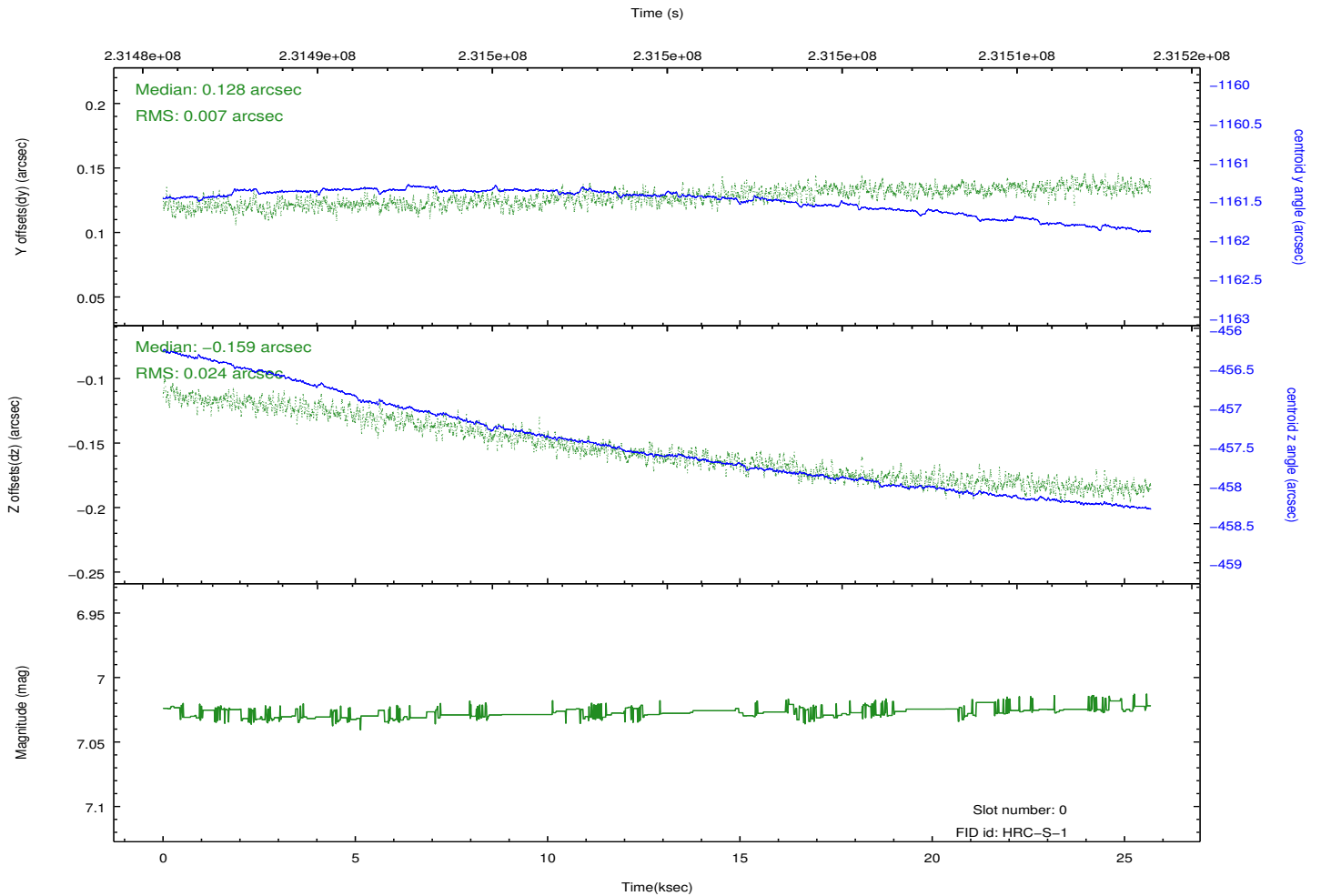
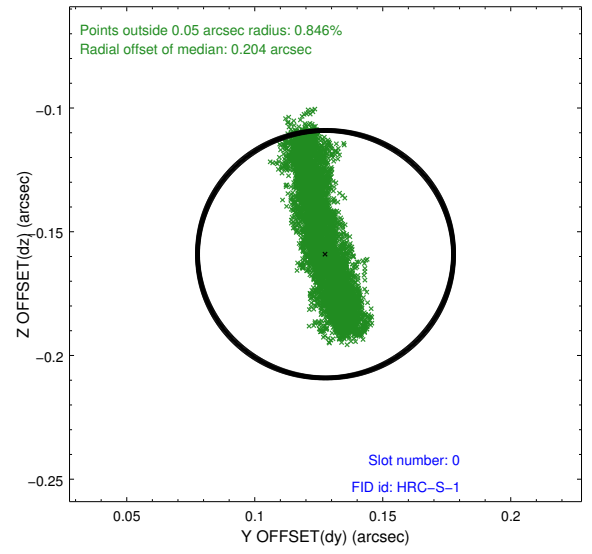
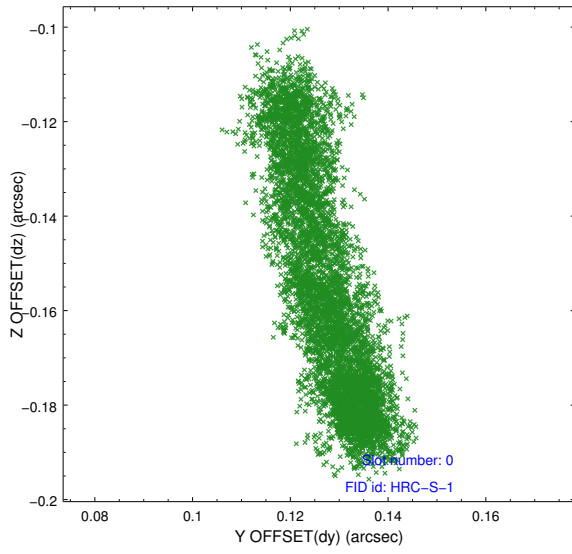


2.4.5 Slot 7

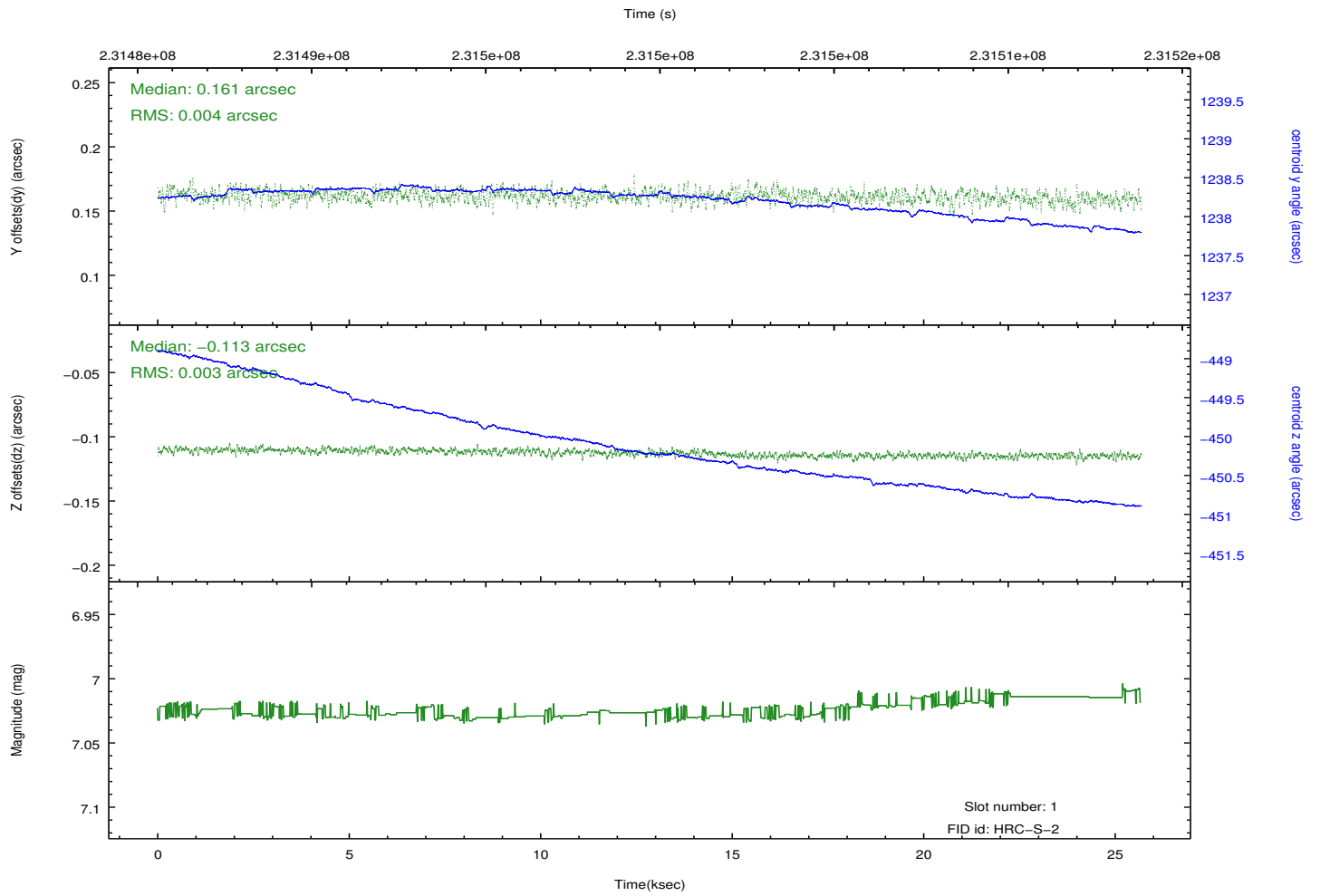
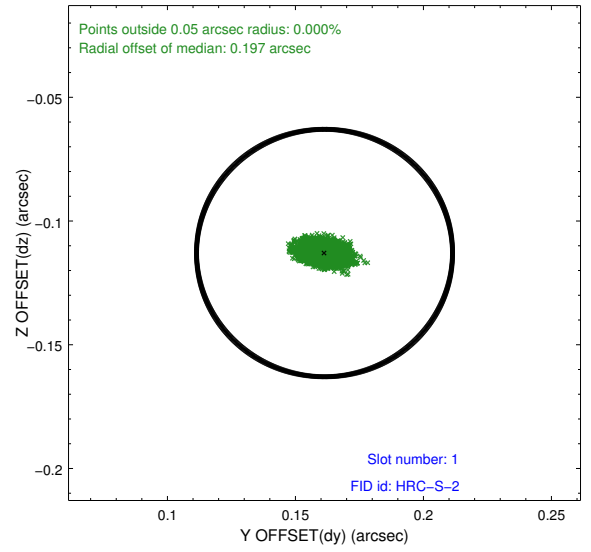
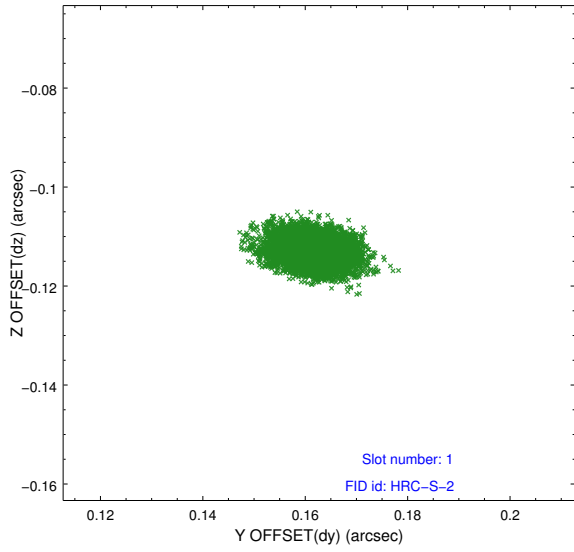


2.5 FID Slots

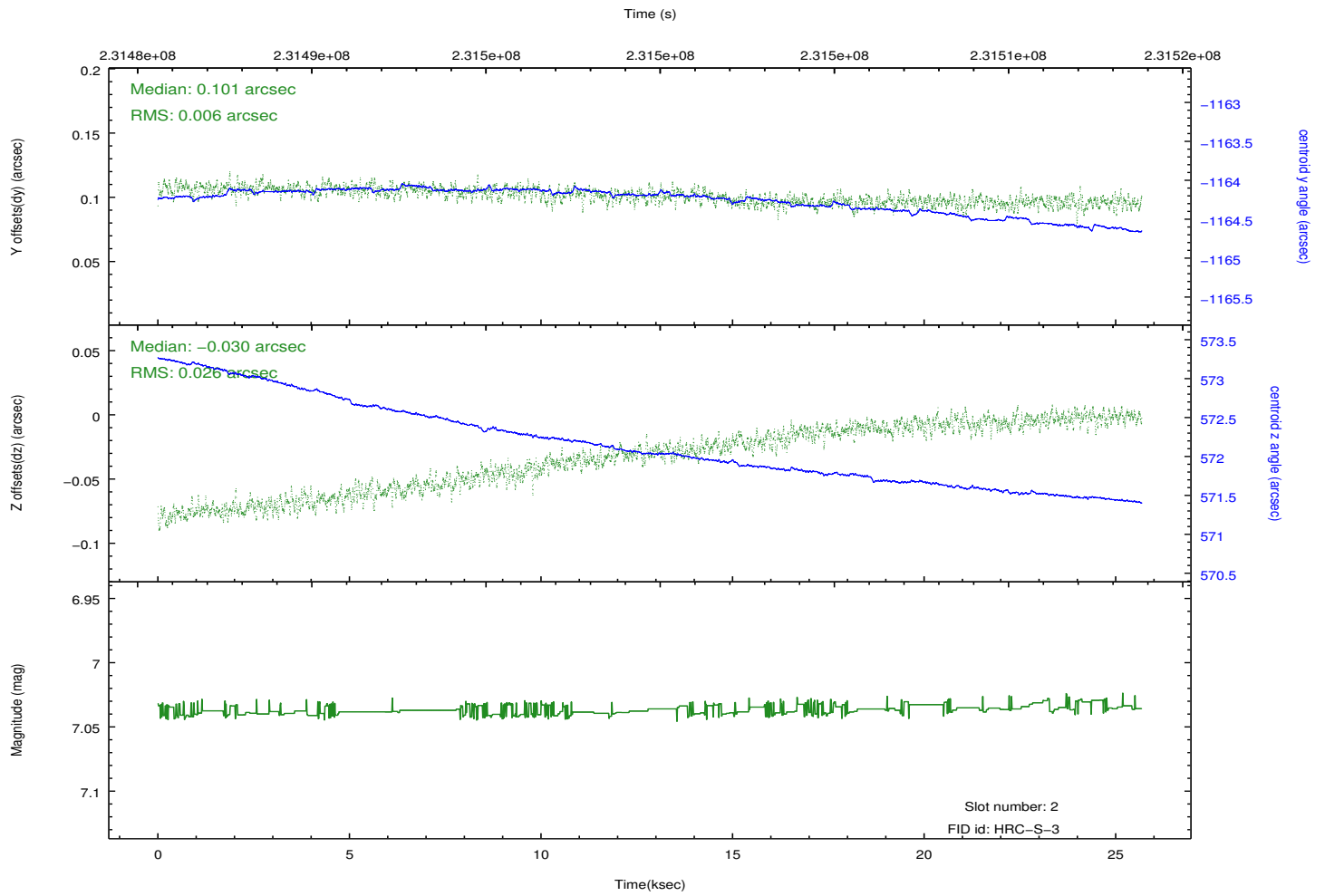
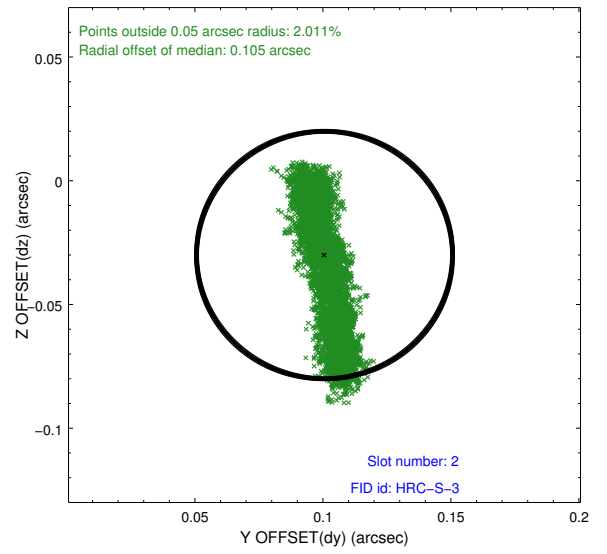
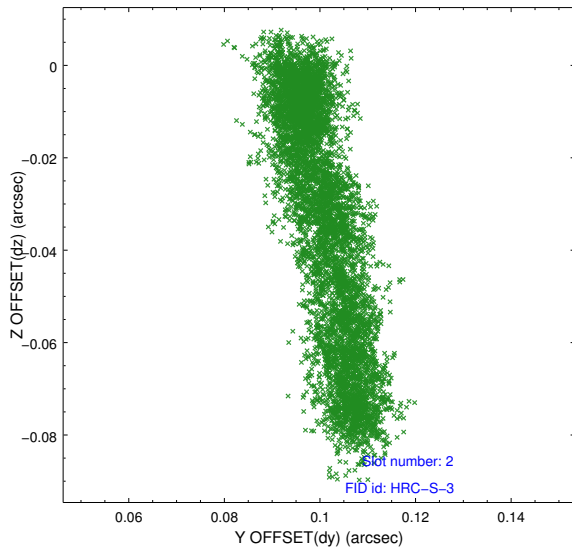
2.5.1 Slot 0



2.5.2 Slot 1

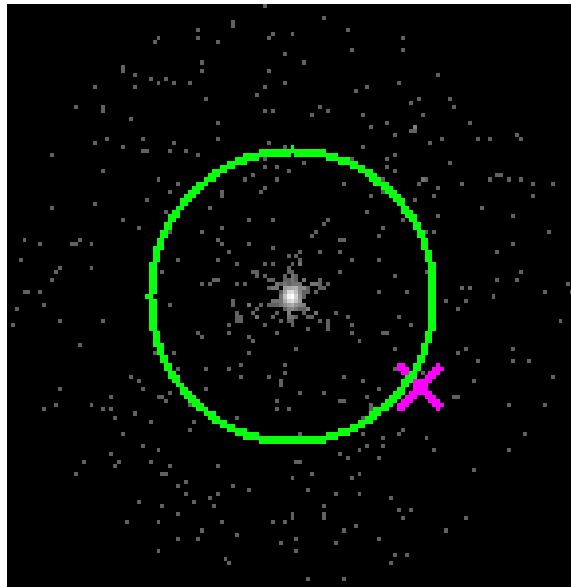


2.5.3 Slot 2

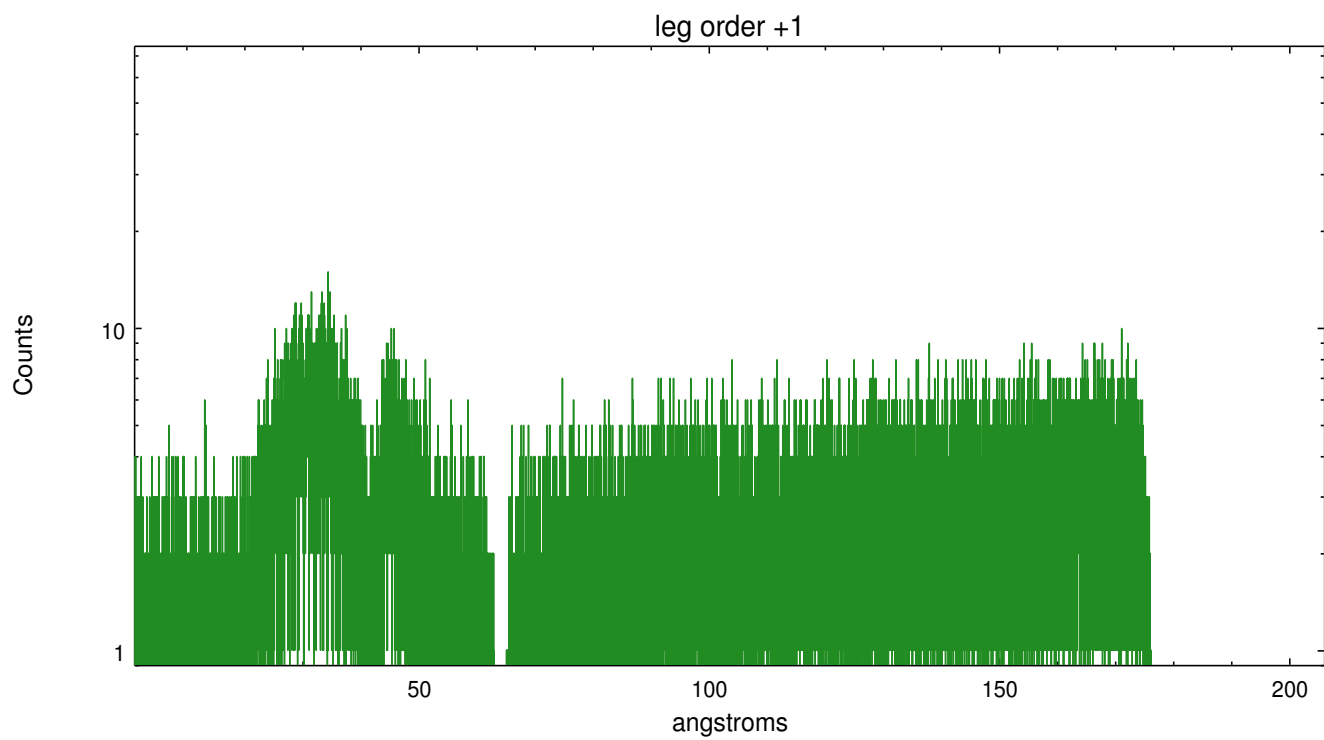
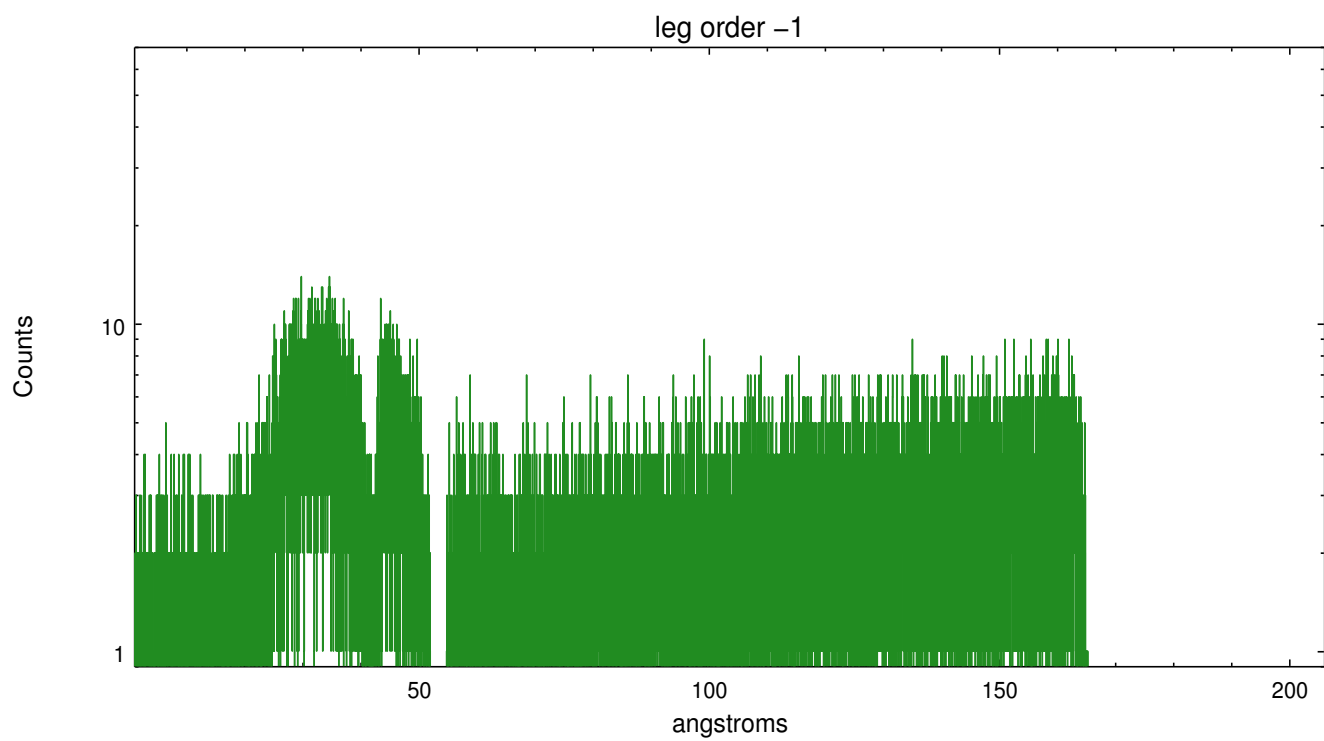


3 Gratings

3.1 LETG Arm



LETG Zero Order



A Summary

A.1 Status

V&V Scientist	Joy Nichols
V&V Date (YYYY-MM-DD)	2013.01.16
V&V Edition	1
V&V Disposition and Status	OK
V&V Charge Time	25.67958

A.2 Comments