

V&V Reference Report

L2 ASCDS Version : 8.5.1.1

Observation 5632 - L2 Version 3
Chandra X-Ray Center

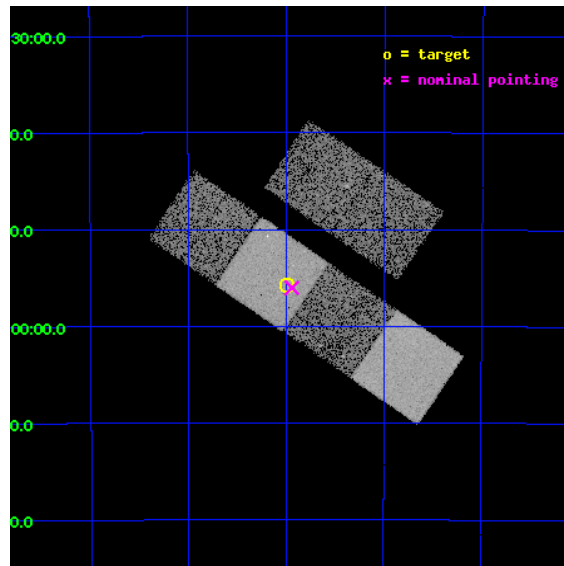
L2 Processing Date : Dec 21 2012

Contents

1	Front	2
2	OBI	3
2.1	OBI	3
2.1.1	Images	3
2.1.2	Bias	3
2.1.3	Parameters	4
2.1.4	Events	4
2.2	Compared Parameters	5
2.3	Aspect	6
2.4	Star Slots	9
2.4.1	Slot 3	9
2.4.2	Slot 4	10
2.4.3	Slot 5	11
2.4.4	Slot 6	12
2.4.5	Slot 7	13
2.5	FID Slots	14
2.5.1	Slot 0	14
2.5.2	Slot 1	15
2.5.3	Slot 2	16
A	Summary	17
A.1	Status	17
A.2	Comments	17

1 Front

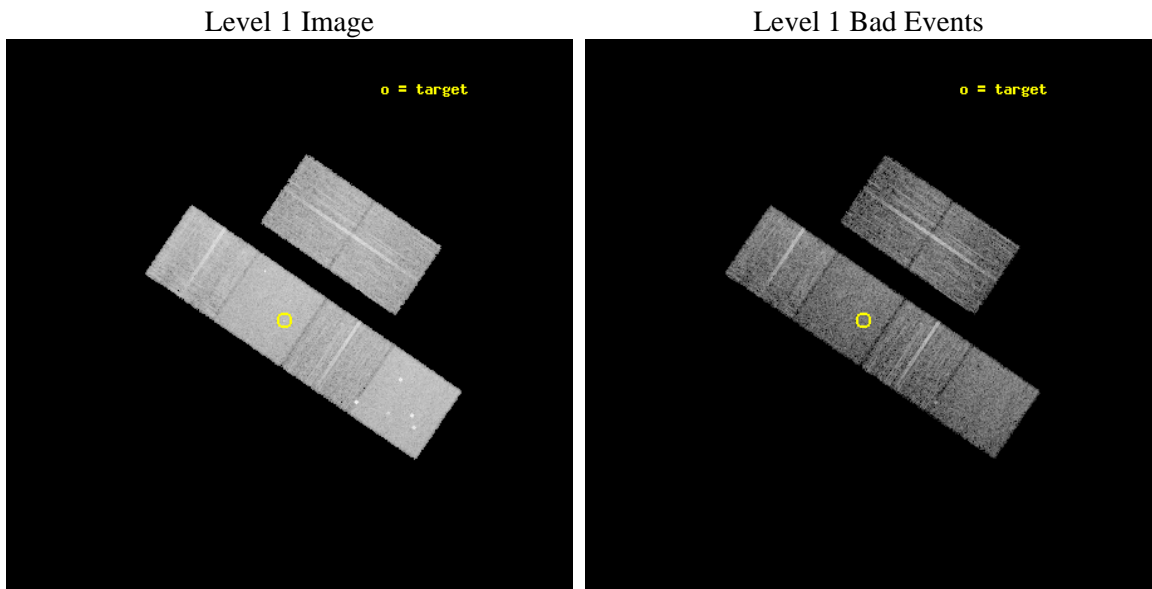
seq_num	701055	Sequence number
obs_id	5632	Observation id
title	THE X-RAY PROPERTIES OF HIGHER REDSHIFT RED AGN	Proposal title
observer	Dr. Belinda Wilkes	Principal investigator
object	2MASS 031159-465548	Source name
dtcycle	0	
cycle	P	events from which exps? Prim/Second/Both
ra_targ	47.998333	Observer's specified target RA [deg]
dec_targ	-46.93	Observer's specified target Dec [deg]
ra_nom	47.985318145676	Nominal RA [deg]
dec_nom	-46.933930987267	Nominal Dec [deg]
roll_nom	214.24795058658	Nominal Roll [deg]
revision	3	Processing version of data
ontime	7753.5999711156	Sum of GTIs [s]
livetime	7655.4192196239	Livetime [s]
ontime2	7753.5999711156	Sum of GTIs [s]
ontime3	7753.5999711156	Sum of GTIs [s]
ontime5	7753.5999711156	Sum of GTIs [s]
ontime6	7753.5999711156	Sum of GTIs [s]
ontime7	7753.5999711156	Sum of GTIs [s]
ontime8	7750.3589908481	Sum of GTIs [s]
l2events	96196	Number of level 2 events



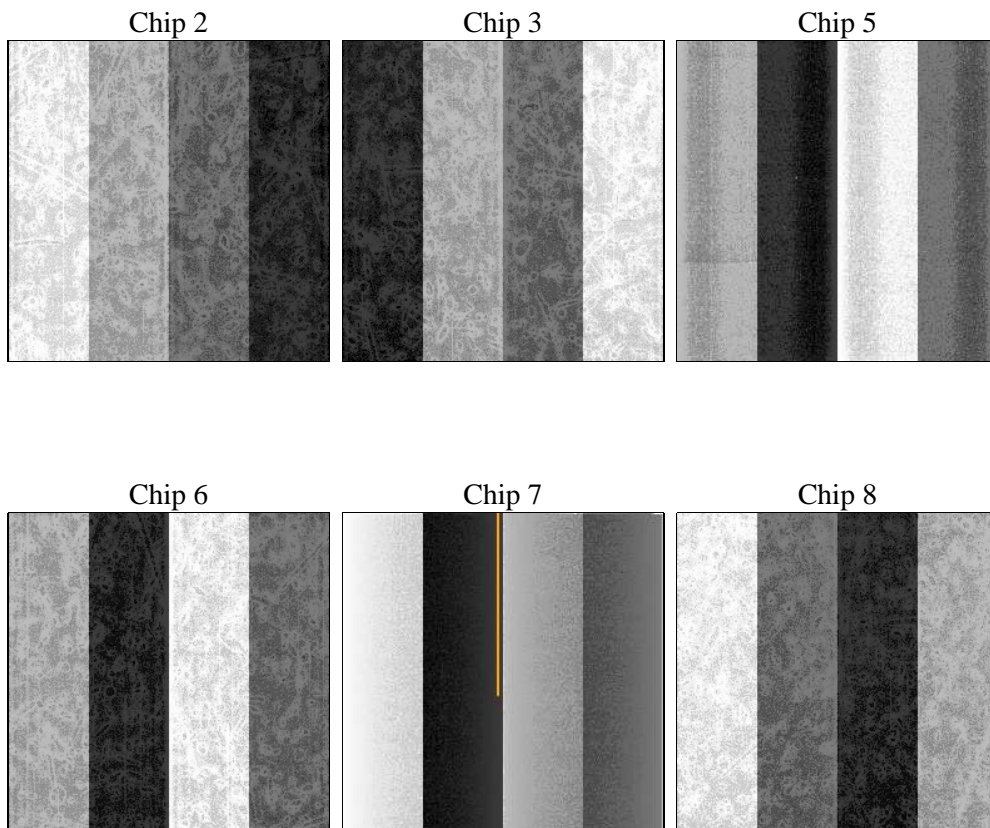
2 OBI

2.1 OBI

2.1.1 Images



2.1.2 Bias



2.1.3 Parameters

obi_num	1	Obi number	sched_exp_time	8000.000000	[s] Scheduled observation exposure time
ascdsver	8.5.1.1	Processing system revision	ontime	7753.5999711156	Sum of GTIs [s]
caldbver	4.5.5	 	ontime2	7753.5999711156	Sum of GTIs [s]
date	2012-12-21T22:19:43	Date and time of file creation	ontime3	7753.5999711156	Sum of GTIs [s]
revision	3	Processing version of data	ontime5	7753.5999711156	Sum of GTIs [s]
			ontime6	7753.5999711156	Sum of GTIs [s]
			ontime7	7753.5999711156	Sum of GTIs [s]
			ontime8	7750.3589908481	Sum of GTIs [s]
			l1events	425716	Number of level 1 events

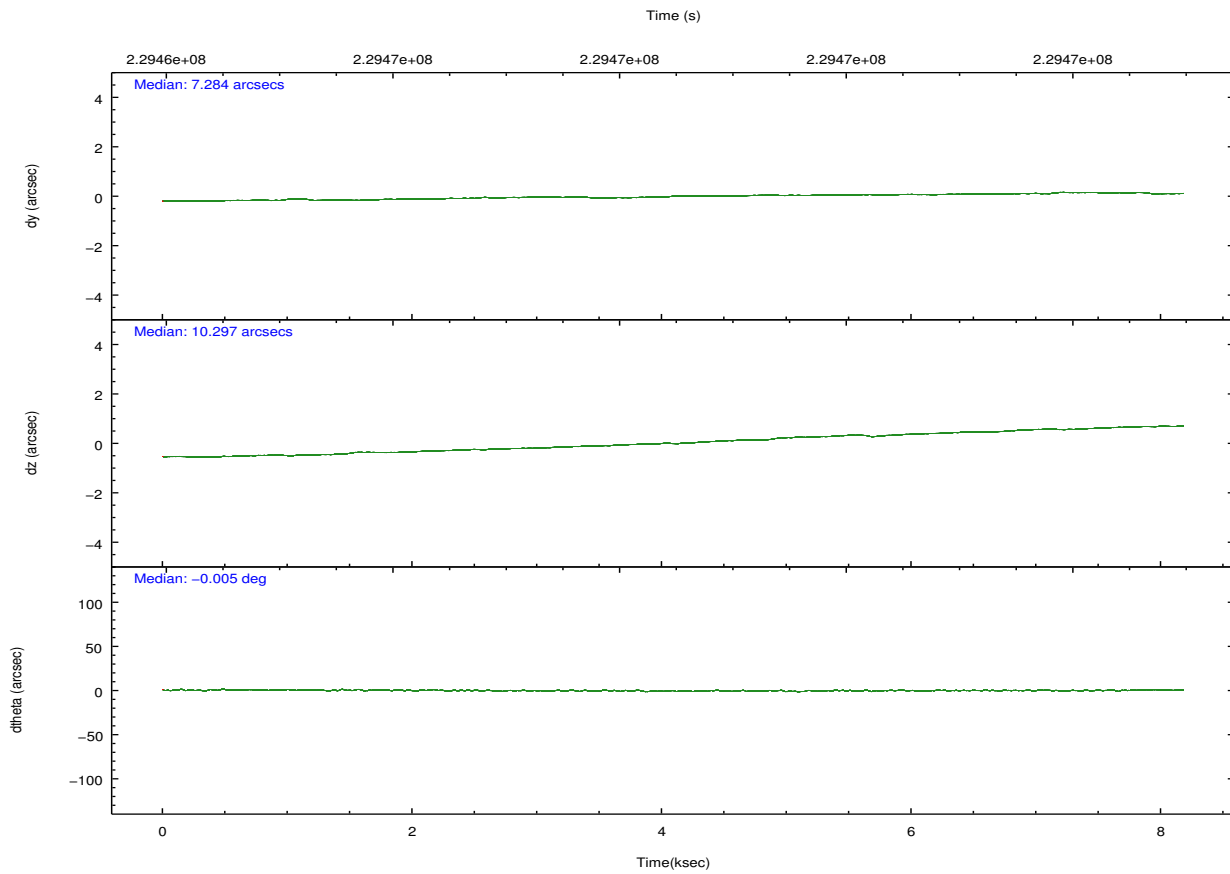
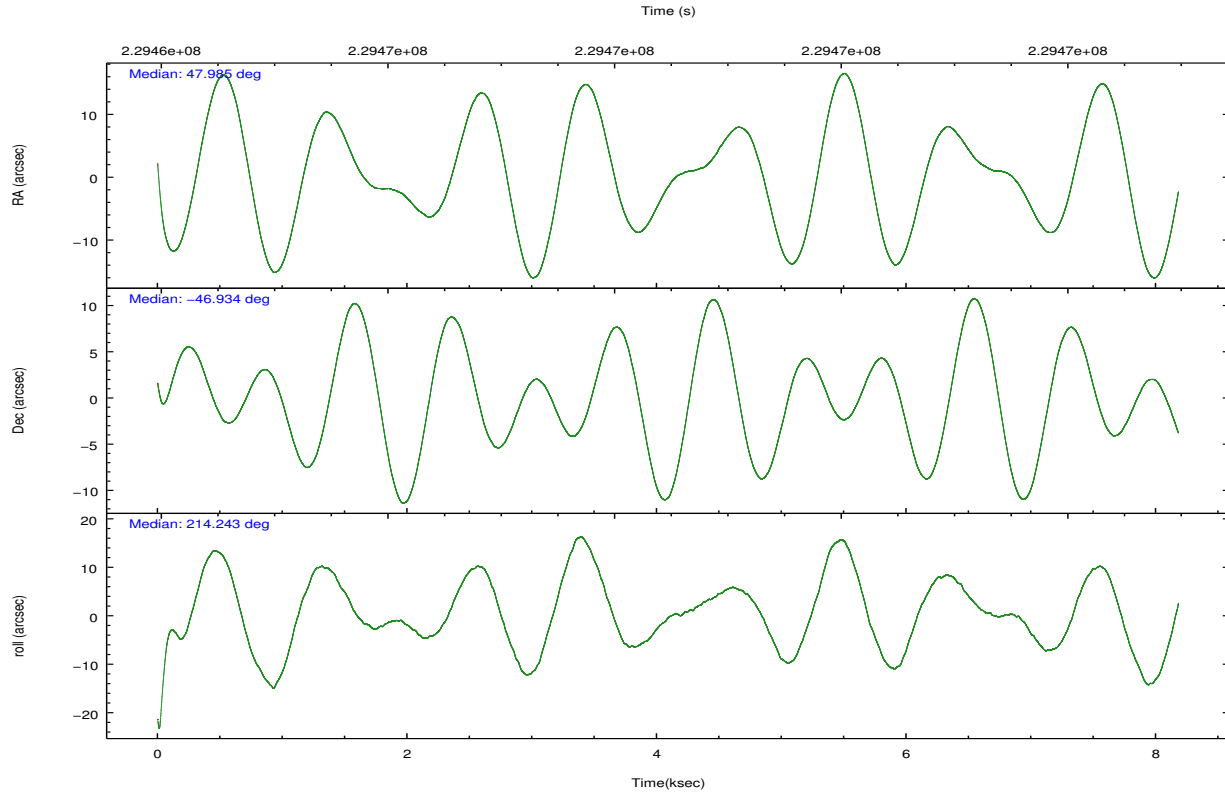
2.1.4 Events

	ccd 2	ccd 3	ccd 5	ccd 6	ccd 7	ccd 8		ccd 2	ccd 3	ccd 5	ccd 6	ccd 7	ccd 8
level 1 events	60011	56399	90087	59569	81399	78251	grade 0 events	3139	3011	5300	2869	3021	5227
rejected events	52911	49580	48107	52434	47737	61561		5%	5%	5%	4%	3%	6%
rejected %	88%	87%	53%	88%	58%	78%	grade 1 events	25	30	185	34	86	61
								0%	0%	0%	0%	0%	0%
							grade 2 events	1376	1285	11904	1495	6701	3683
								2%	2%	13%	2%	8%	4%
							grade 3 events	702	681	1582	724	3044	1759
								1%	1%	1%	1%	3%	2%
							grade 4 events	674	673	1667	708	2961	1667
								1%	1%	1%	1%	3%	2%
							grade 5 events	2418	2643	6614	2744	7912	3670
								4%	4%	7%	4%	9%	4%
							grade 6 events	1216	1180	21566	1348	17956	4360
								2%	2%	23%	2%	22%	5%
							grade 7 events	50461	46896	41269	49647	39718	57824
								84%	83%	45%	83%	48%	73%

2.2 Compared Parameters

Parameter	Planned	Actual	Parameter	Planned	Actual
Instrument	ACIS	ACIS	Obspar format version number	7	7
Detector	ACIS-235678	ACIS-235678	Obspar file type	PREDICTED	ACTUAL
Grating	NONE	NONE	Obspar update status	NONE	UPDATED
Data mode	FAINT	FAINT	Number of optional ACIS chips dropped	0	0
Observation mode	POINTING	POINTING	On-chip summing requested	N	N
[deg] Pointing RA	48.002244	47.98531814567555	Subarray requested	NONE	NONE
[deg] Pointing Dec	-46.909275	-46.9339309872669	Alternating exposures requested	N	N
[deg] Pointing Roll	214.103748	214.2479505865809	[s] Primary exposure time	0.000000	3.2
[mm] SIM focus pos	-0.684267	-0.6828225247311905			
[mm] SIM defocus	0	0.001444936568705701			
[mm] SIM translation stage pos	-190.132523	-190.1400660498719			
[mm] SIM translation stage offset	0	0.00754346686406393			
[s] Observation start time (MET)	229464569.184000	229463566.06093			
Observation start date	2005-04-09T20:08:25	2005-04-09T19:52:46			
[s] Observation end time (MET)	229472569.184000	229473585.43639			
Observation end date	2005-04-09T22:21:45	2005-04-09T22:39:45			
Read mode	TIMED	TIMED			

2.3 Aspect

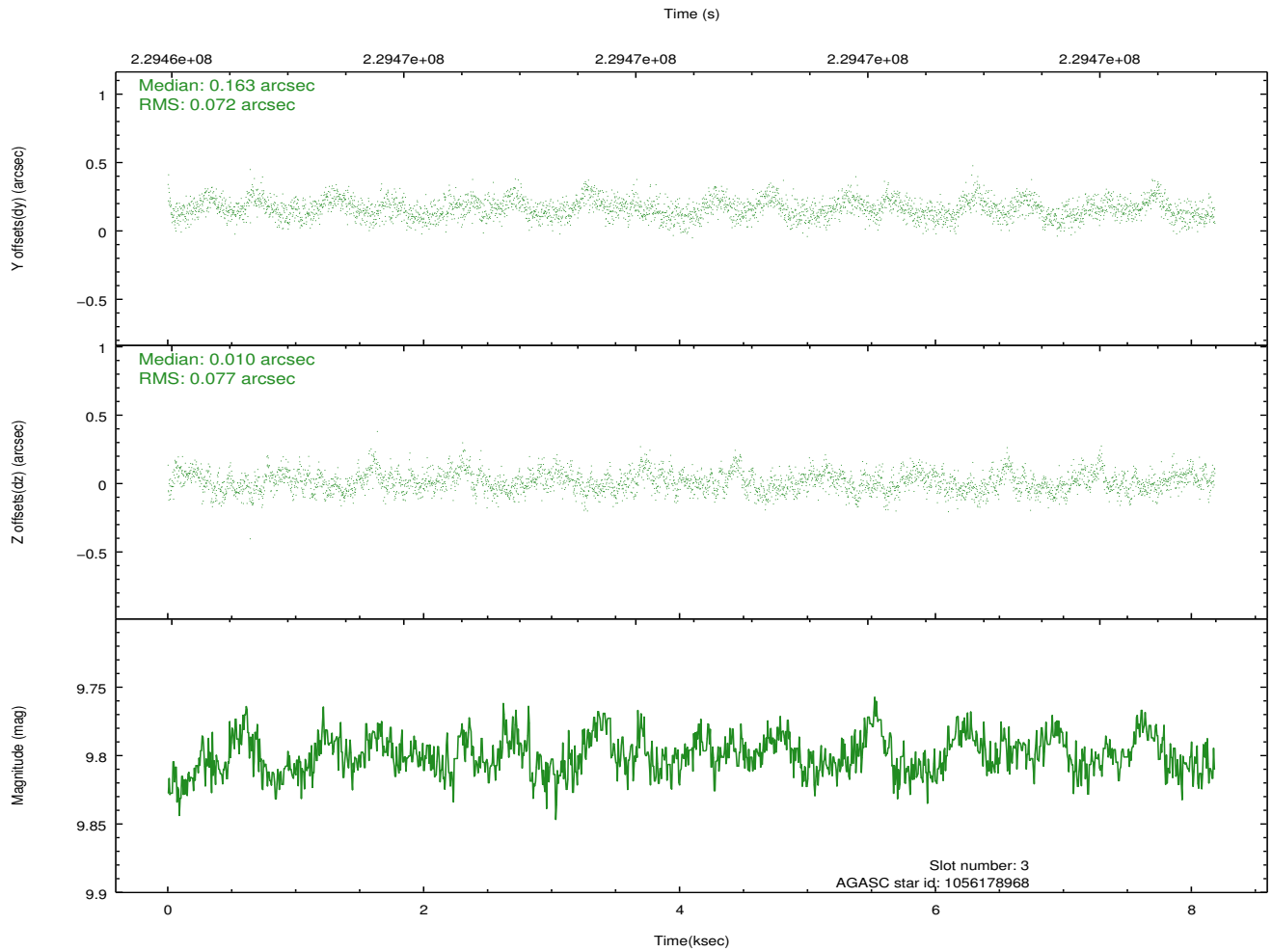
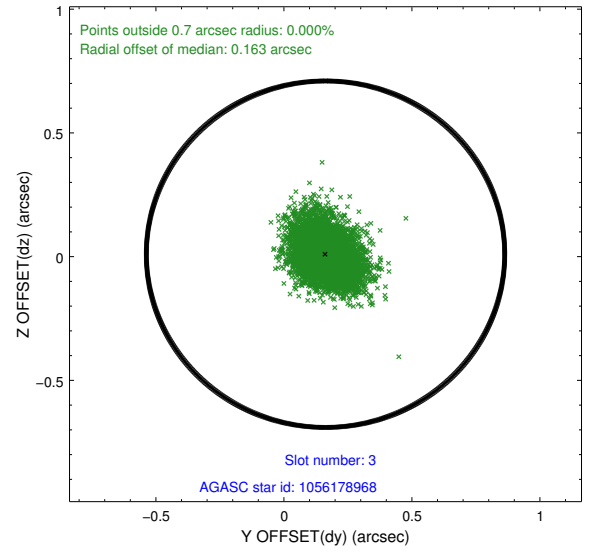
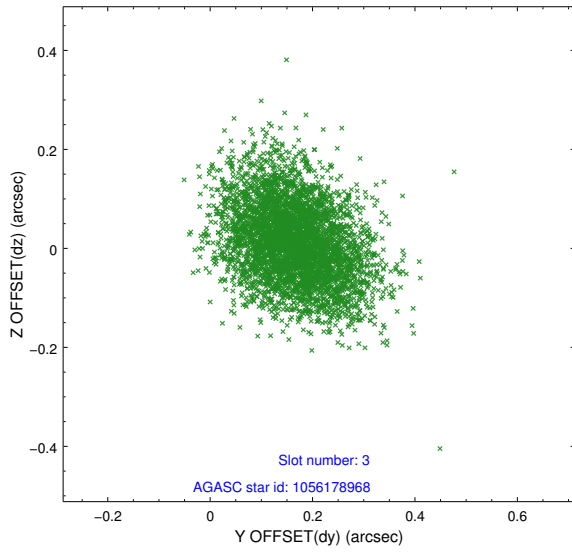


Slot Statistics

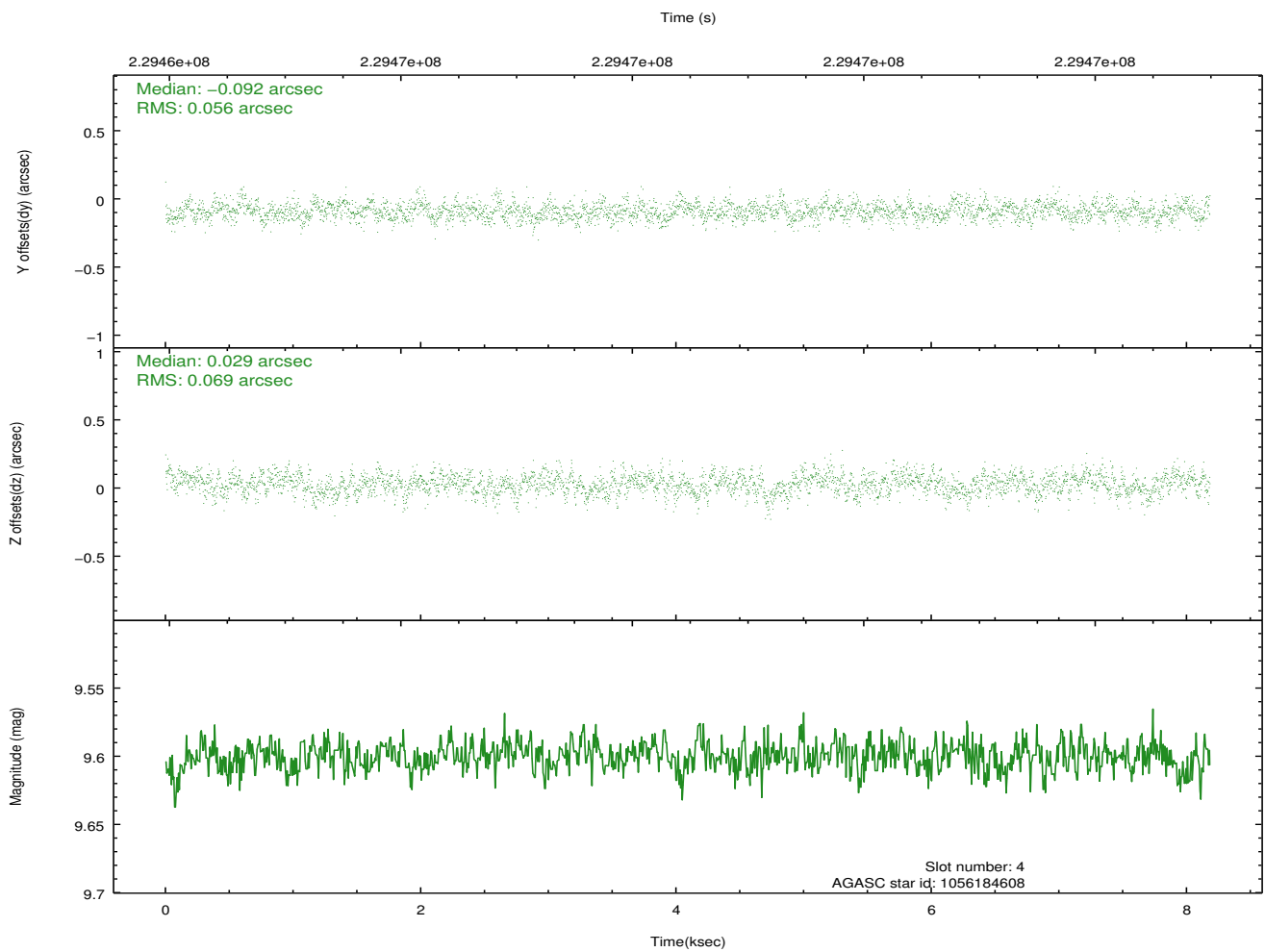
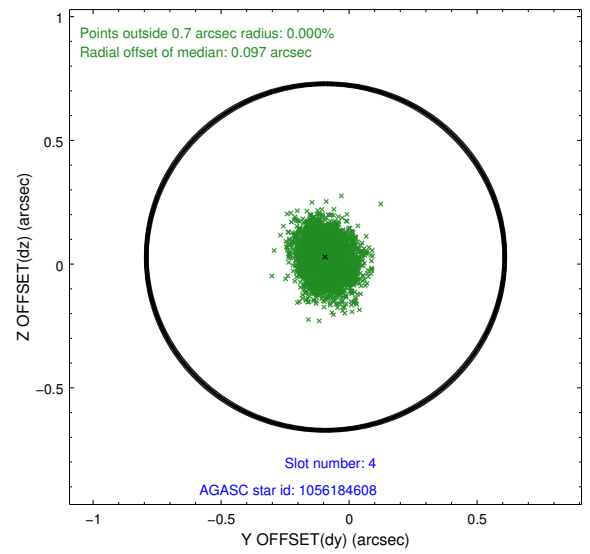
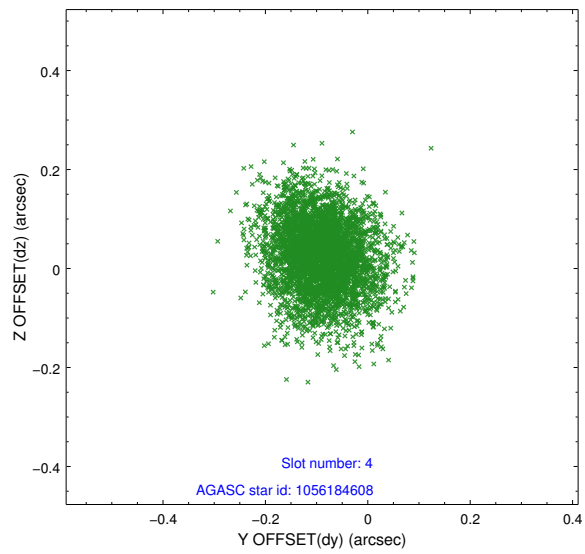
slot	status	id	mag	n_pts	med_dy	med_dz	dr1	dr2	ra	dec	mean_y	mean_z
0	FID	ACIS-S-2	7.10	1996	-0.053	-0.026	0.009	0.015	0.000000	0.000000	-760.04	-1731.63
1	FID	ACIS-S-4	7.21	1996	0.103	0.033	0.006	0.011	0.000000	0.000000	2153.04	176.27
2	FID	ACIS-S-5	7.23	1996	-0.081	0.003	0.008	0.013	0.000000	0.000000	-1812.07	170.60
3	GUIDE	1056178968	9.80	3985	0.163	0.010	0.112	0.184	47.434855	-46.868743	1077.96	-899.06
4	GUIDE	1056184608	9.60	3988	-0.092	0.029	0.094	0.154	47.567919	-46.566080	199.75	-1623.01
5	GUIDE	1056186576	7.30	3992	-0.054	0.035	0.054	0.086	47.768072	-46.350534	-645.03	-1991.04
6	GUIDE	1056187616	8.11	3992	0.026	-0.039	0.098	0.140	48.113529	-46.490360	-1073.31	-1093.91
7	GUIDE	1056572016	9.81	3988	-0.042	-0.034	0.109	0.177	47.961471	-47.634233	1545.19	2105.91

2.4 Star Slots

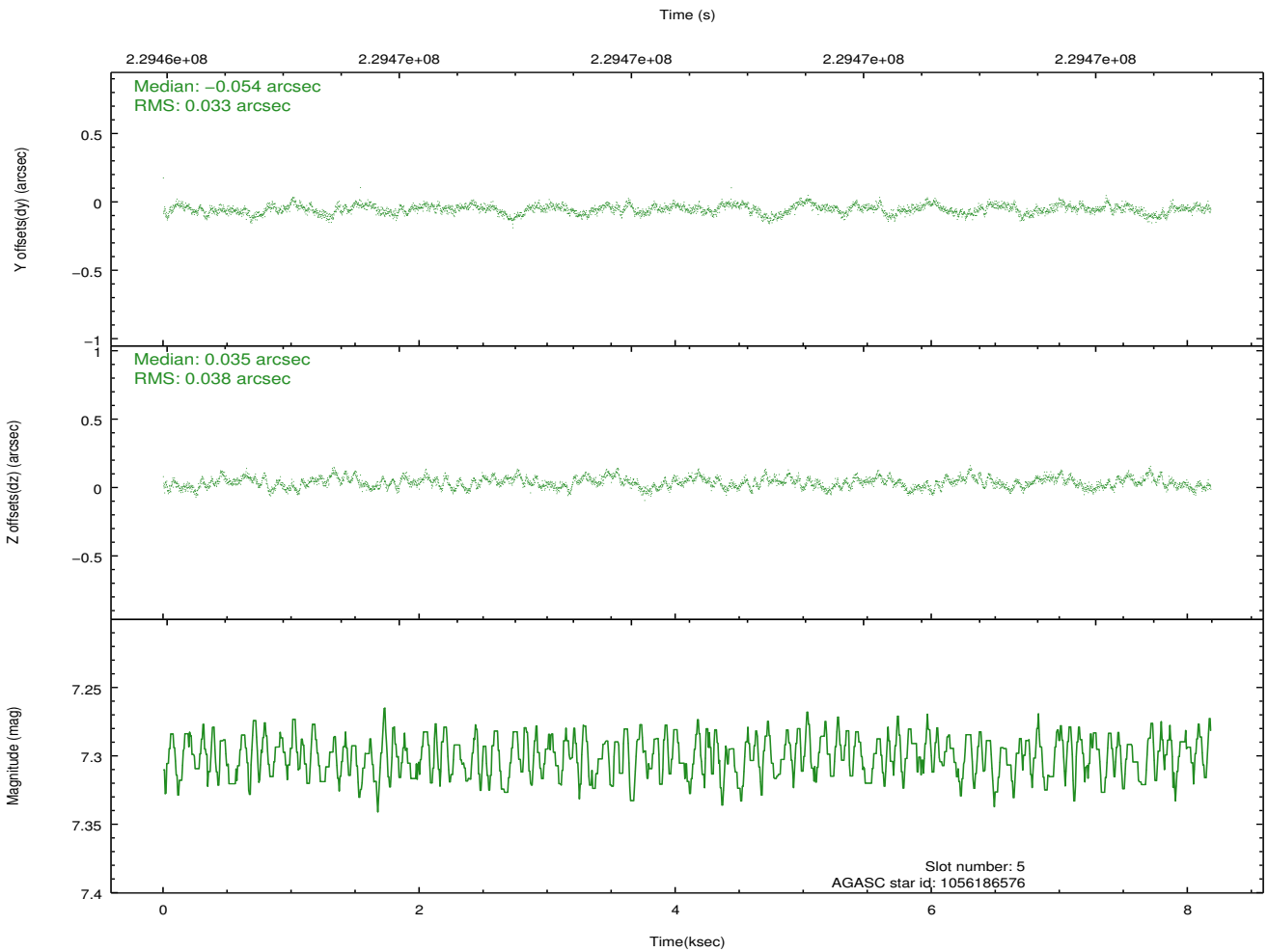
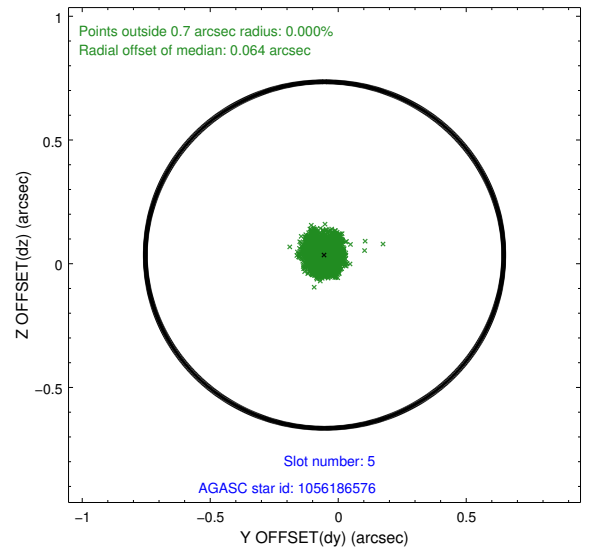
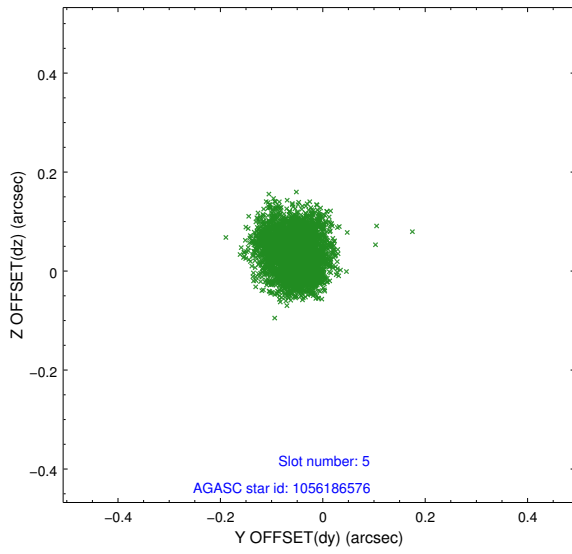
2.4.1 Slot 3



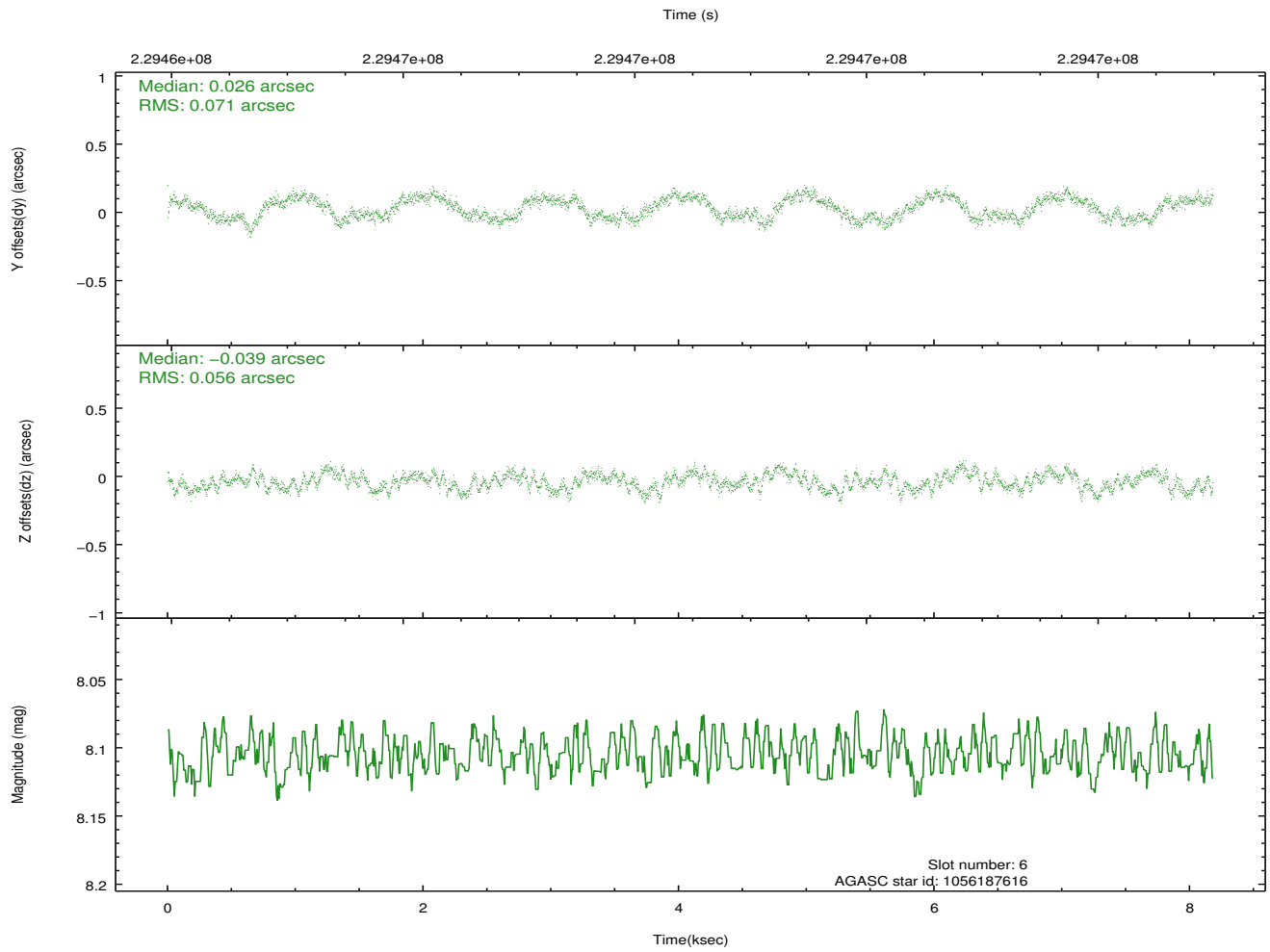
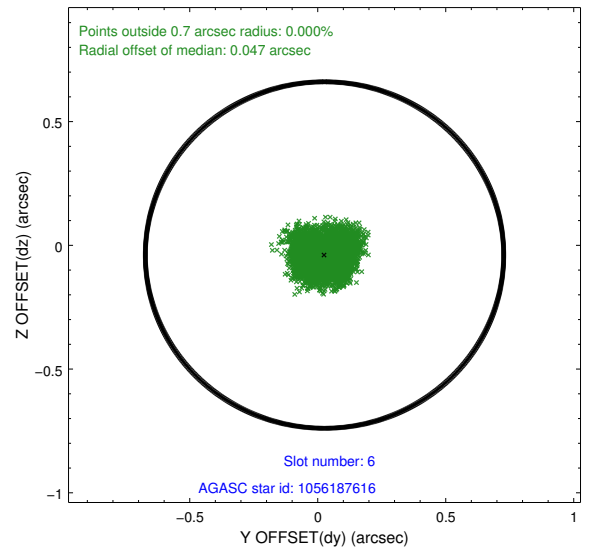
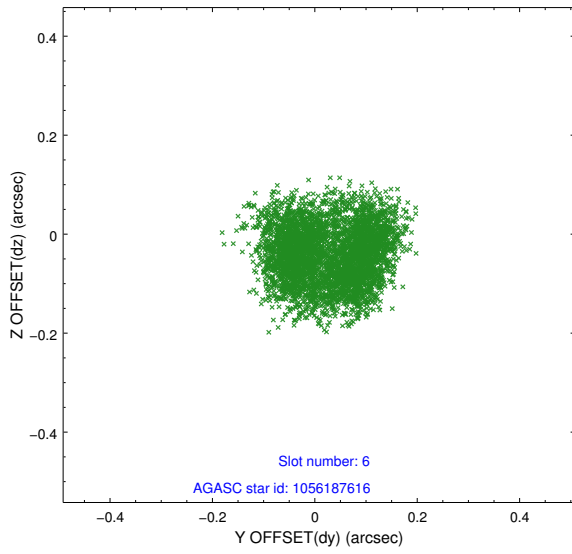
2.4.2 Slot 4



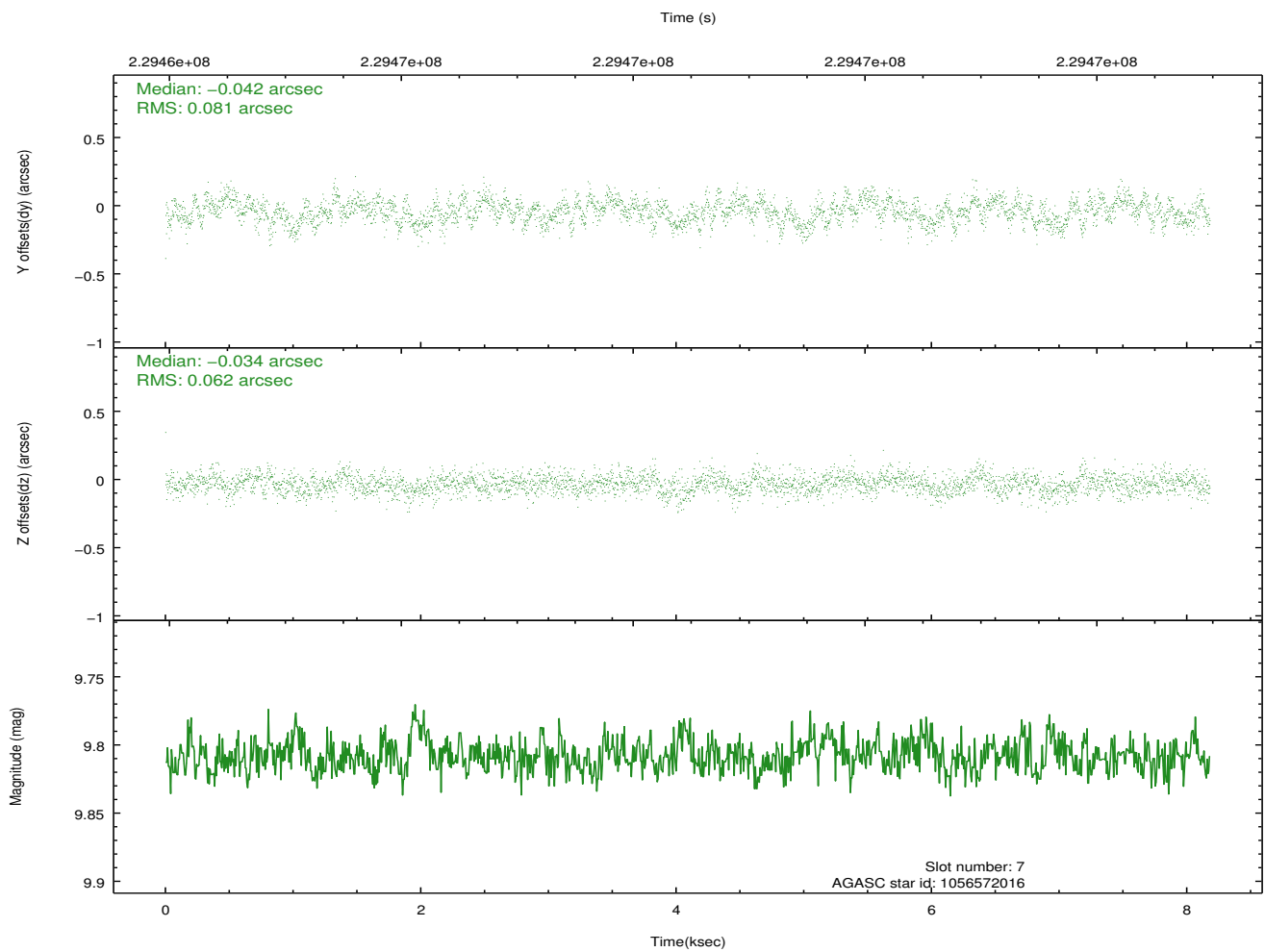
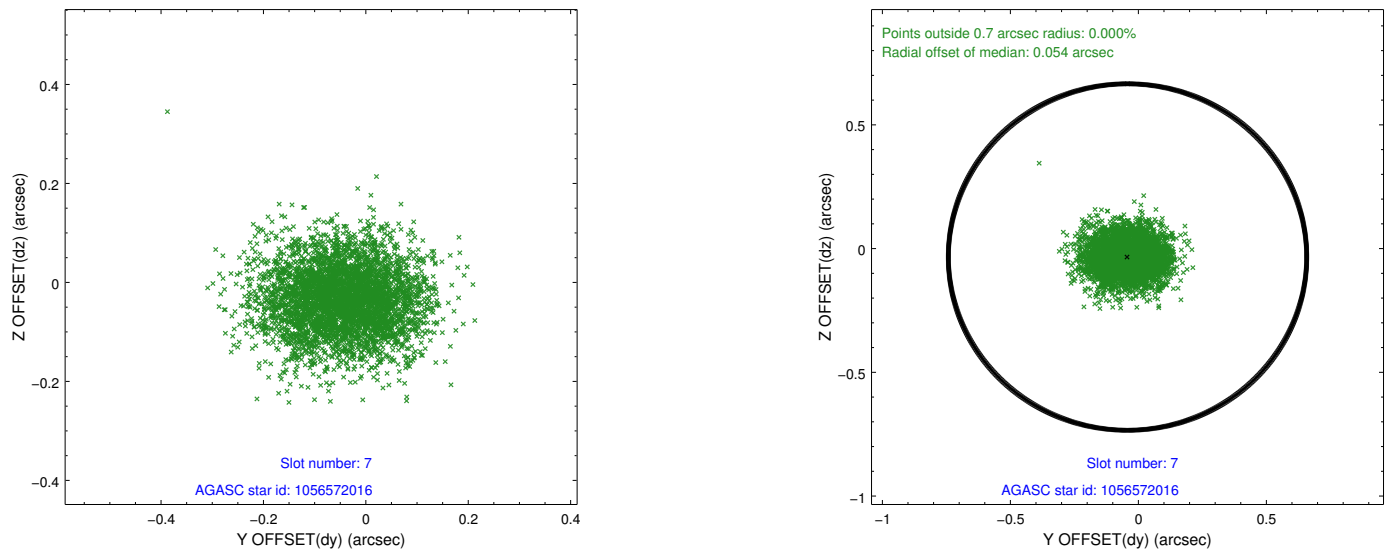
2.4.3 Slot 5



2.4.4 Slot 6

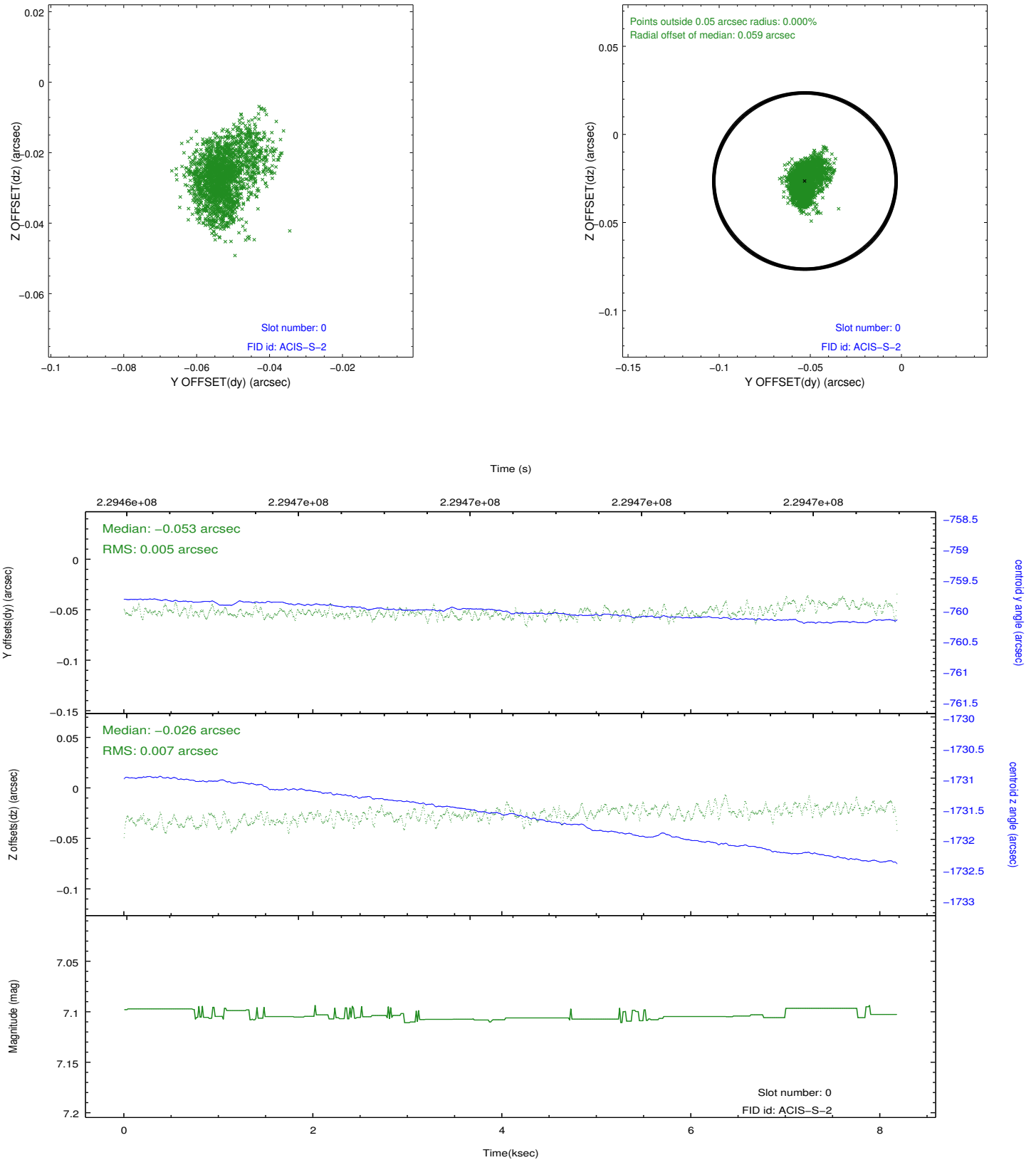


2.4.5 Slot 7

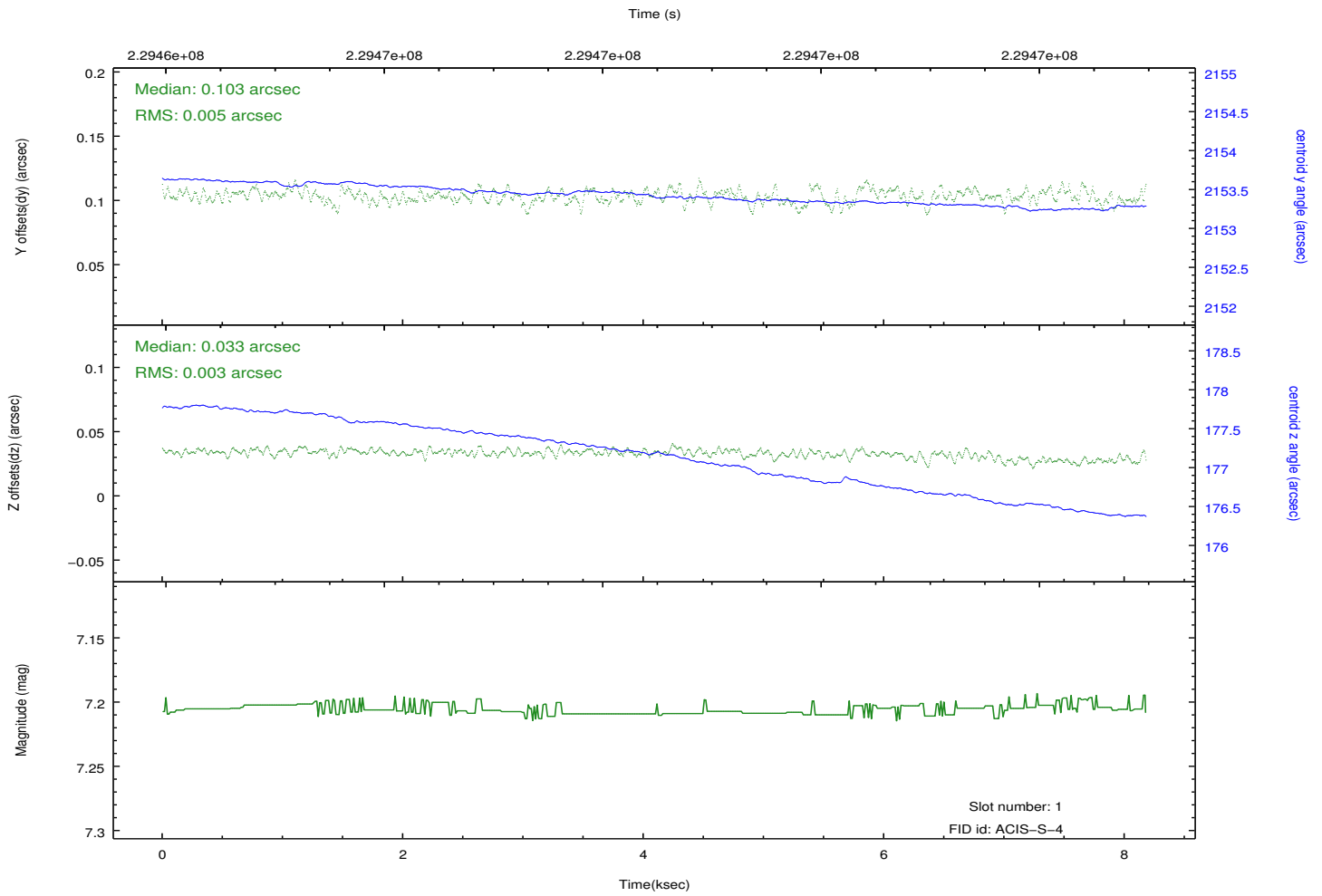
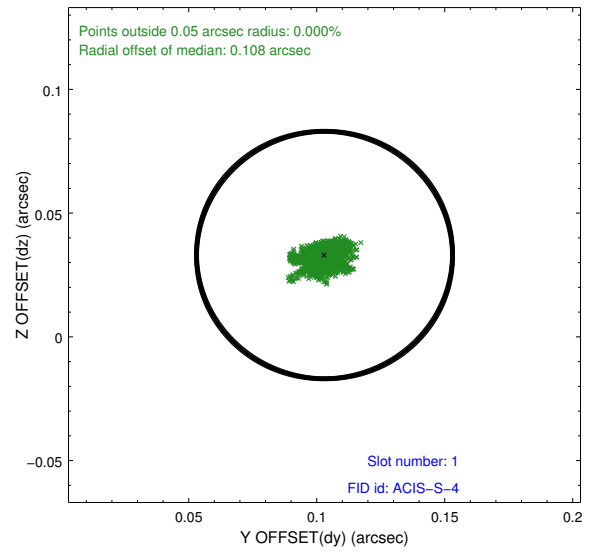
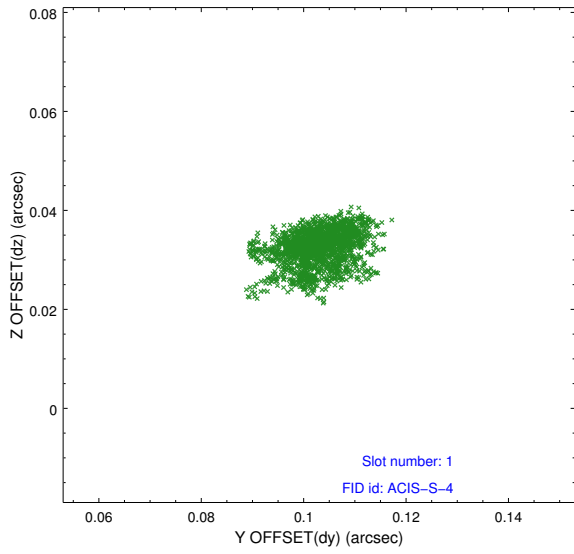


2.5 FID Slots

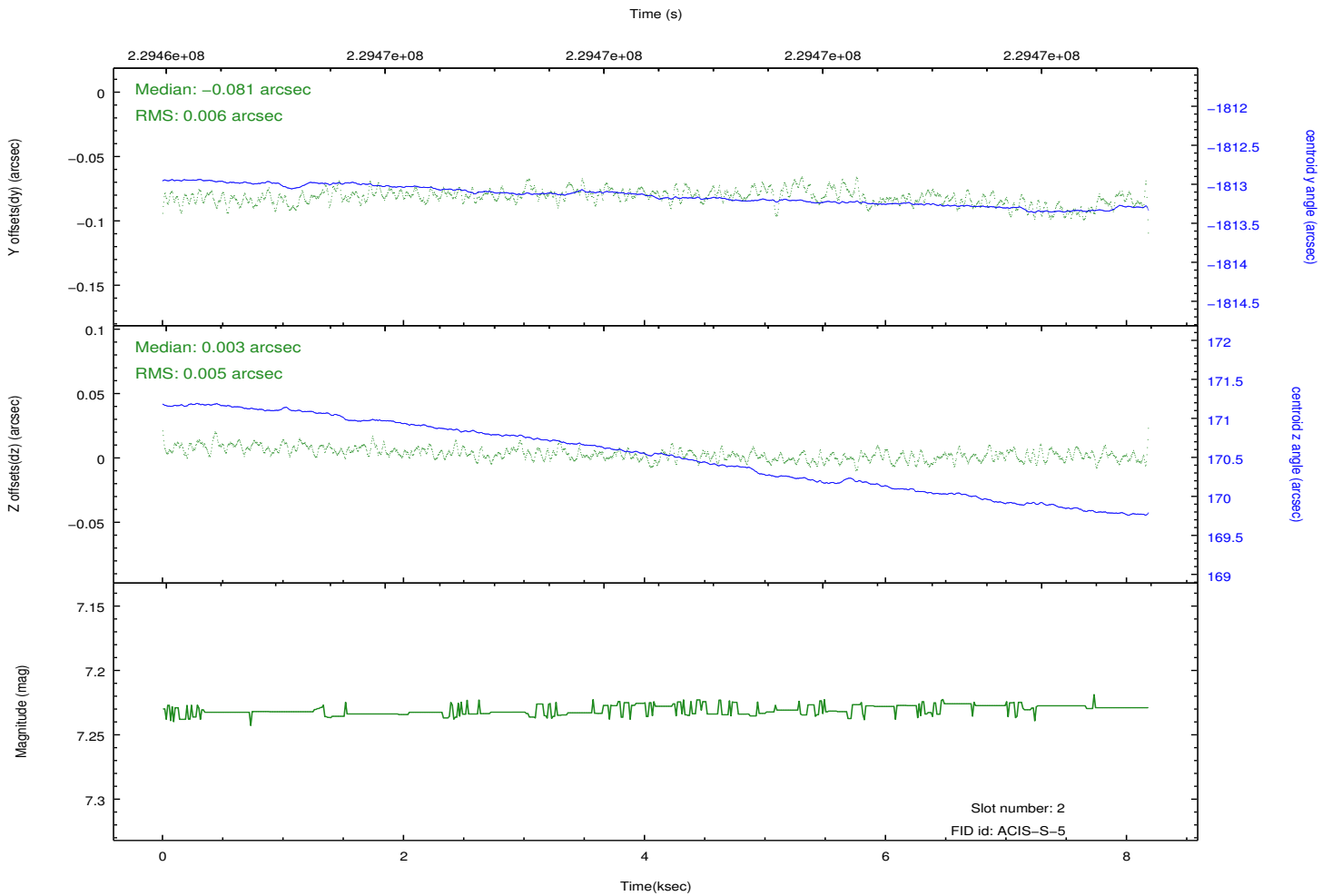
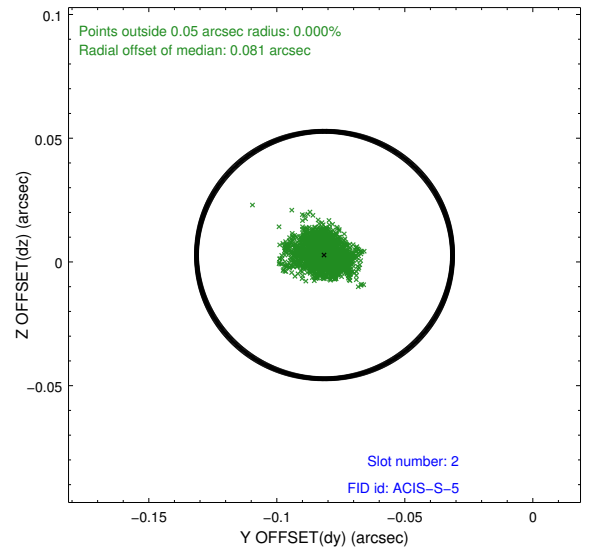
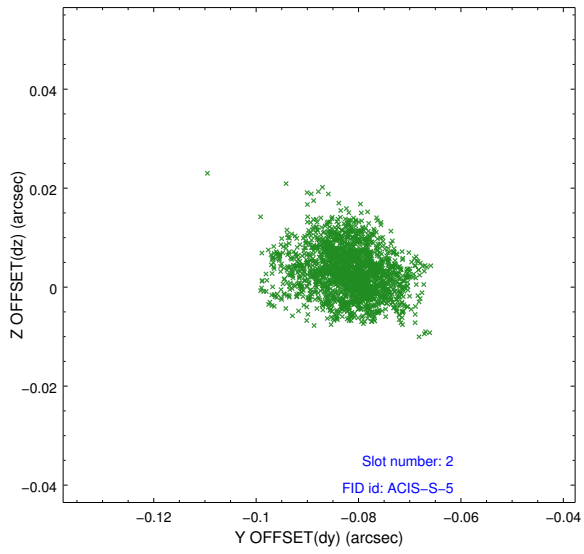
2.5.1 Slot 0



2.5.2 Slot 1



2.5.3 Slot 2



A Summary

A.1 Status

V&V Scientist	Jen Lauer
V&V Date (YYYY-MM-DD)	2013.01.14
V&V Edition	1
V&V Disposition and Status	OK
V&V Charge Time	7.753599

A.2 Comments