

# V&V Reference Report

## L2 ASCDS Version : 8.4.4

Observation 58012 - L2 Version 2  
Chandra X-Ray Center

L2 Processing Date : May 8 2012

## Contents

<b>1</b>	<b>Front</b>	<b>2</b>
<b>2</b>	<b>OBI</b>	<b>3</b>
2.1	OBI . . . . .	3
2.1.1	Images . . . . .	3
2.1.2	Bias . . . . .	3
2.1.3	Parameters . . . . .	4
2.1.4	Events . . . . .	4
2.2	Compared Parameters . . . . .	5
2.3	Star Slots . . . . .	6
2.4	FID Slots . . . . .	6
<b>A</b>	<b>Summary</b>	<b>7</b>
A.1	Status . . . . .	7
A.2	Comments . . . . .	7

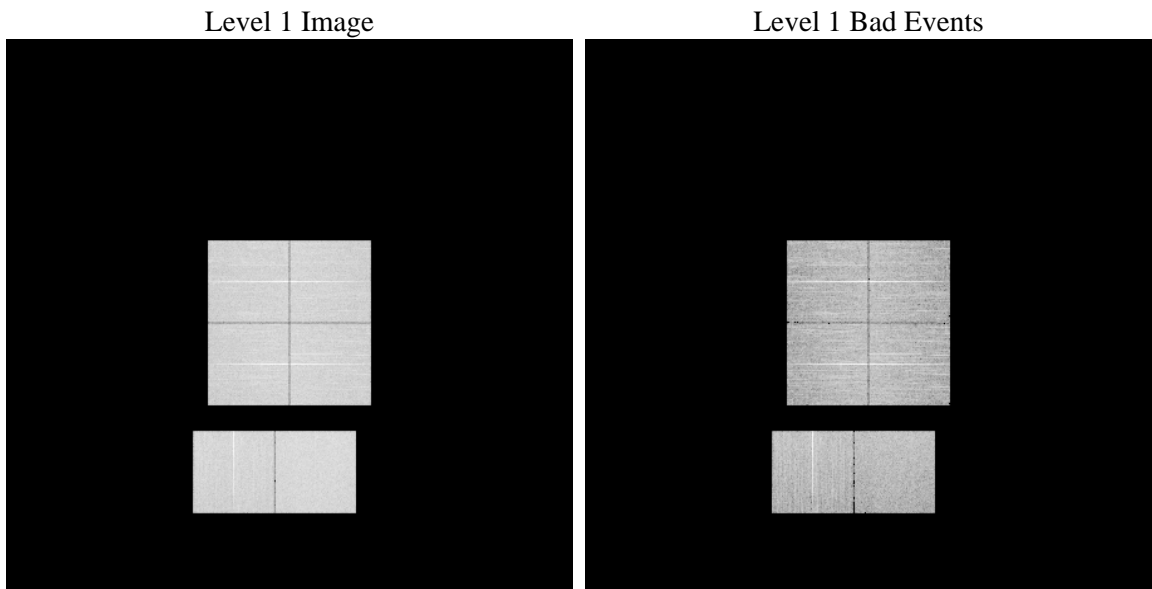
# 1 Front

seq_num	&#160	Sequence number
obs_id	58012	Observation id
title	ACIS-012367 diagnostics	Proposal title
observer	CHANDRA engineering request/realtime commanding	Principal investig
object	&#160	Source name
dtycycle	0	&#160
cycle	P	events from which exps? Prim/Second/Both
ra_targ	0.0	Observer's specified target RA [deg]
dec_targ	0.0	Observer's specified target Dec [deg]
ra_nom	124.95915837805	Nominal RA [deg]
dec_nom	46.494102152878	Nominal Dec [deg]
roll_nom	158.99779986431	Nominal Roll [deg]
revision	2	Processing version of data
ontime	8280.4520676732	Sum of GTIs [s]
livetime	8175.5999977027	Livetime [s]
ontime0	8095.6744996309	Sum of GTIs [s]
ontime1	8173.4171876907	Sum of GTIs [s]
ontime2	8069.6644867659	Sum of GTIs [s]
ontime3	8089.2745791674	Sum of GTIs [s]
ontime6	8140.9251944423	Sum of GTIs [s]
ontime7	8280.4520676732	Sum of GTIs [s]
l2events	736568	Number of level 2 events

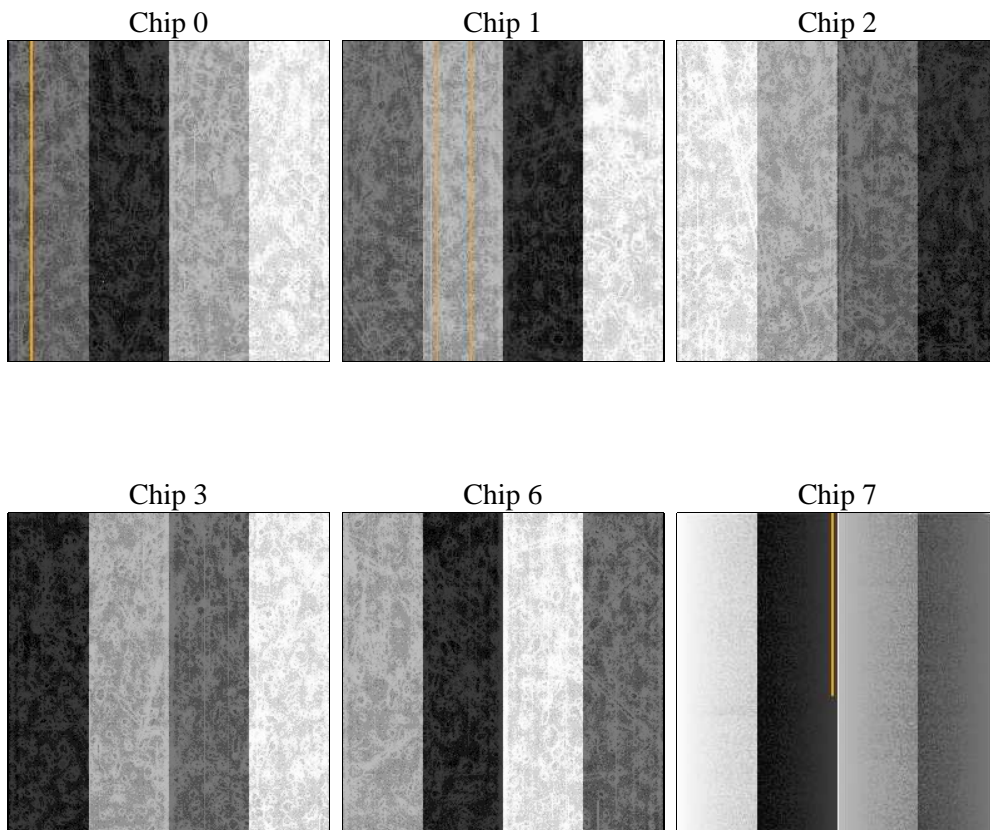
## 2 OBI

### 2.1 OBI

#### 2.1.1 Images



#### 2.1.2 Bias



### 2.1.3 Parameters

obi_num	0	Obi number	sched_exp_time	0.0	[s] Scheduled observation exposure time
ascdsver	8.4.4	Processing system revision	ontime	8280.4520676732	Sum of GTIs [s]
caldbver	4.4.9	&#160	ontime0	8095.6744996309	Sum of GTIs [s]
date	2012-05-08T03:09:53	Date and time of file creation	ontime1	8173.4171876907	Sum of GTIs [s]
revision	2	Processing version of data	ontime2	8069.6644867659	Sum of GTIs [s]
			ontime3	8089.2745791674	Sum of GTIs [s]
			ontime6	8140.9251944423	Sum of GTIs [s]
			ontime7	8280.4520676732	Sum of GTIs [s]
			l1events	1201553	Number of level 1 events

### 2.1.4 Events

	ccd 0	ccd 1	ccd 2	ccd 3	ccd 6	ccd 7		ccd 0	ccd 1	ccd 2	ccd 3	ccd 6	ccd 7
level 1 events	191149	191786	192710	196927	204339	224642	grade 0 events	64890	64904	65284	66860	66492	33844
rejected events	69434	67457	73126	73740	75749	65410		33%	33%	33%	33%	32%	15%
rejected %	36%	35%	37%	37%	37%	29%	grade 1 events	500	429	532	542	500	203
								0%	0%	0%	0%	0%	0%
							grade 2 events	21514	22847	20088	21089	22443	34661
								11%	11%	10%	10%	10%	15%
							grade 3 events	7798	8032	7764	8064	8097	14552
								4%	4%	4%	4%	3%	6%
							grade 4 events	7828	7767	7904	8151	8053	14466
								4%	4%	4%	4%	3%	6%
							grade 5 events	3848	4055	3743	4304	4106	10684
								2%	2%	1%	2%	2%	4%
							grade 6 events	19685	20779	18544	19023	23505	61709
								10%	10%	9%	9%	11%	27%
							grade 7 events	65086	62973	68851	68894	71143	54523
								34%	32%	35%	34%	34%	24%

## 2.2 Compared Parameters

Parameter	Planned	Actual	Parameter	Planned	Actual
Instrument	ACIS	ACIS	Obspar format version number	7	7
Detector	ACIS-012367	ACIS-012367	Obspar file type	PREDICTED	ACTUAL
Grating	NONE	NONE	Obspar update status	NONE	UPDATED
Data mode	FAINT	FAINT	On-chip summing requested	N	N
Observation mode	SECONDARY	SECONDARY	Subarray requested	NONE	NONE
[deg] Pointing RA	0	124.9591583780538	Alternating exposures requested	N	N
[deg] Pointing Dec	0	46.49410215287791	[s] Primary exposure time	3.2	3.2
[deg] Pointing Roll	0.0	158.9977998643091			
[mm] SIM focus pos	-0.782348	-0.6828225247311905			
[mm] SIM defocus	0	0.8505141146731063			
[mm] SIM translation stage pos	-233.592463	250.4635187648994			
[mm] SIM translation stage offset	0	-0.007540371344731511			
[s] Observation start time (MET)	316670910.970529	316670909.94551			
Observation start date	2008-01-14T04:08:31	2008-01-14T04:08:29			
[s] Observation end time (MET)	316703782.722123	316703781.6971			
Observation end date	2008-01-14T13:16:23	2008-01-14T13:16:21			
Read mode	TIMED	TIMED			

**2.3 Star Slots**

**2.4 FID Slots**

# A Summary

## A.1 Status

V&V Scientist	Jen Lauer
V&V Date (YYYY-MM-DD)	2012.05.10
V&V Edition	1
V&V Disposition and Status	OK
V&V Charge Time	8.2804520676732

## A.2 Comments

Apparent high radiation environment about 1 ksec into the observation caused anomalous increased count rate. This time period is not included in the GTI.