

V&V Reference Report

L2 ASCDS Version : 7.6.10

Observation 61372 - L2 Version 001
Chandra X-Ray Center

L2 Processing Date : Jan 17 2007

Contents

1	Front	2
2	OBI	3
2.1	OBI	3
2.1.1	Images	3
2.1.2	Bias	3
2.1.3	Parameters	4
2.1.4	Events	4
2.2	Compared Parameters	5
2.3	Star Slots	6
2.4	FID Slots	6
A	Summary	7
A.1	Status	7
A.2	Comments	7

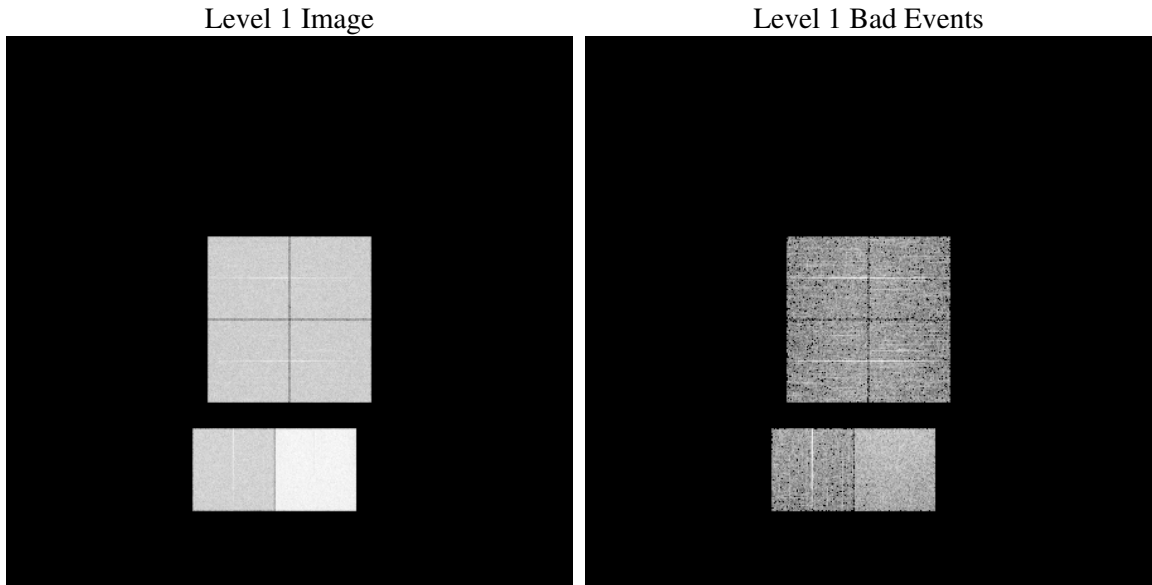
1 Front

seq_num	
obs_id	61372
title	ACIS-012367 diagnostics
observer	CHANDRA engineering request/realtime commanding
object	
dtcycle	0
cycle	P
ra_targ	0.0
dec_targ	0.0
ra_nom	340.03691181022
dec_nom	44.988216957702
roll_nom	302.91229853844
revision	2
ontime	7619.2000070959
livetime	7522.7211088746
ontime0	2939.2318262309
ontime1	2904.1951649338
ontime2	2825.7957856208
ontime3	2835.5191446841
ontime6	3111.7026281208
ontime7	7619.2000070959
l2events	1216311

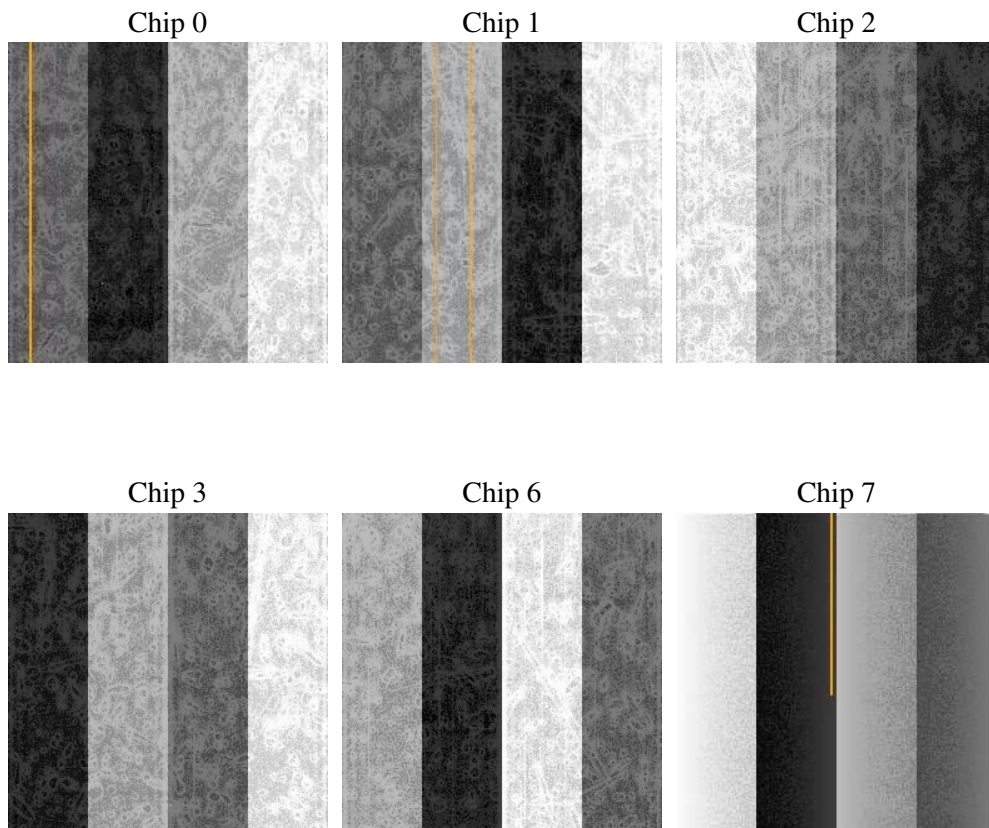
2 OBI

2.1 OBI

2.1.1 Images



2.1.2 Bias



2.1.3 Parameters

obi_num	0
ascdsver	7.6.10
caldbver	3.3.0
date	2007-01-17T05:25:08
revision	2

sched_exp_time	0.0
ontime	7619.2000070959
ontime0	2939.2318262309
ontime1	2904.1951649338
ontime2	2825.7957856208
ontime3	2835.5191446841
ontime6	3111.7026281208
ontime7	7619.2000070959
l1events	1421132

2.1.4 Events

	ccd 0	ccd 1	ccd 2	ccd 3	ccd 6	ccd 7
level 1 events	185157	183131	181208	182153	205837	483646
rejected events	22120	21936	22430	22965	23803	41309
rejected %	11%	11%	12%	12%	11%	8%

	ccd 0	ccd 1	ccd 2	ccd 3	ccd 6	ccd 7
grade 0 events	90220	88889	88519	89006	99529	113368
	48%	48%	48%	48%	48%	23%
grade 1 events	471	462	445	448	502	296
	0%	0%	0%	0%	0%	0%
grade 2 events	28536	28386	27764	28173	31705	99000
	15%	15%	15%	15%	15%	20%
grade 3 events	10268	10166	9915	10017	11448	45173
	5%	5%	5%	5%	5%	9%
grade 4 events	10164	10268	10091	10047	11062	44639
	5%	5%	5%	5%	5%	9%
grade 5 events	1581	1568	1451	1593	1834	8268
	0%	0%	0%	0%	0%	1%
grade 6 events	24043	23662	22671	22115	28470	140342
	12%	12%	12%	12%	13%	29%
grade 7 events	19874	19730	20352	20754	21287	32560
	10%	10%	11%	11%	10%	6%

2.2 Compared Parameters

Parameter	Planned	Actual	Parameter	Planned	Actual
Instrument	ACIS	ACIS	Obspar format version number	6	6
Detector	ACIS-012367	ACIS-012367	Obspar file type	PREDICTED	ACTUAL
Grating	NONE	NONE	Obspar update status	NONE	UPDATED
Data mode	FAINT	FAINT	On-chip summing requested	N	N
Observation mode	SECONDARY	SECONDARY	Subarray requested	NONE	NONE
Pointing RA	0	340.0369118102162	Alternating exposures requested	N	N
Pointing Dec	0	44.98821695770248	Primary exposure time	0.000000	3.2
Pointing Roll	0.0	302.9122985384366			
SIM focus pos (mm)	-0.782348	-0.6828225247311905			
SIM defocus (mm)	0	0.8505141146731063			
SIM translation stage pos (mm)	-233.592463	250.466033080201			
SIM translation stage offset (mm)	0	-0.01005468664627074			
Observation start time	125648333.119	125648332.35097			
Observation start date	2001-12-25T06:18:53	2001-12-25T06:18:52			
Observation end time	125680323.371	125680322.60226			
Observation end date	2001-12-25T15:12:03	2001-12-25T15:12:02			
Read mode	TIMED	TIMED			

2.3 Star Slots

2.4 FID Slots

A Summary

A.1 Status

V&V Scientist	Jen Lauer
V&V Date (YYYY-MM-DD)	2007.01.17
V&V Edition	1
V&V Disposition and Status	OK
V&V Charge Time	7.6192

A.2 Comments