

V&V Reference Report

L2 ASCDS Version : 8.5.1

Observation 6172 - L2 Version 3
Chandra X-Ray Center

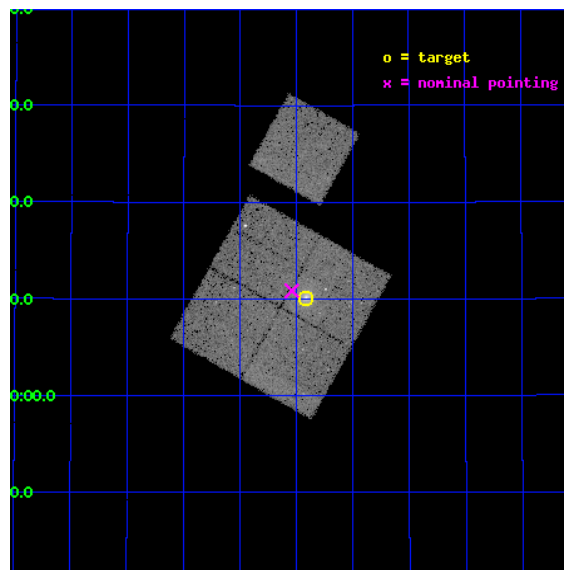
L2 Processing Date : Dec 15 2012

Contents

1	Front	2
2	OBI	3
2.1	OBI	3
2.1.1	Images	3
2.1.2	Bias	3
2.1.3	Parameters	4
2.1.4	Events	4
2.2	Compared Parameters	5
2.3	Aspect	6
2.4	Star Slots	9
2.4.1	Slot 3	9
2.4.2	Slot 4	10
2.4.3	Slot 5	11
2.4.4	Slot 6	12
2.4.5	Slot 7	13
2.5	FID Slots	14
2.5.1	Slot 0	14
2.5.2	Slot 1	15
2.5.3	Slot 2	16
A	Summary	17
A.1	Status	17
A.2	Comments	17

1 Front

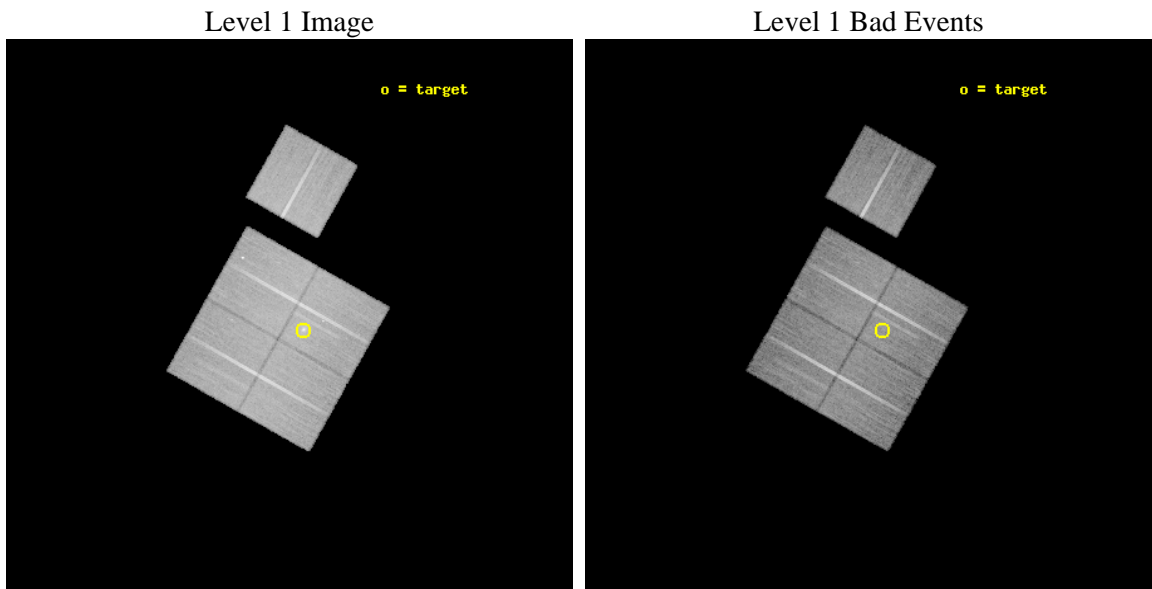
seq_num	800557	Sequence number
obs_id	6172	Observation id
title	Probing dark energy using the X-ray gas mass fraction in dynamically relaxed galaxy clusters	Proposal title
observer	Prof. Steven Allen	Principal investigator
object	MACS1621.6+3810	Source name
dtcycle	0	
cycle	P	events from which exps? Prim/Second/Both
ra_targ	245.353333	Observer's specified target RA [deg]
dec_targ	38.168889	Observer's specified target Dec [deg]
ra_nom	245.38512205795	Nominal RA [deg]
dec_nom	38.180793304482	Nominal Dec [deg]
roll_nom	29.41243602876	Nominal Roll [deg]
revision	3	Processing version of data
ontime	30144.277041256	Sum of GTIs [s]
livetime	29750.419869819	Livetime [s]
ontime0	30153.699941993	Sum of GTIs [s]
ontime1	30144.277031243	Sum of GTIs [s]
ontime2	30141.136011153	Sum of GTIs [s]
ontime3	30144.277041256	Sum of GTIs [s]
ontime6	30144.277001381	Sum of GTIs [s]
l2events	87625	Number of level 2 events



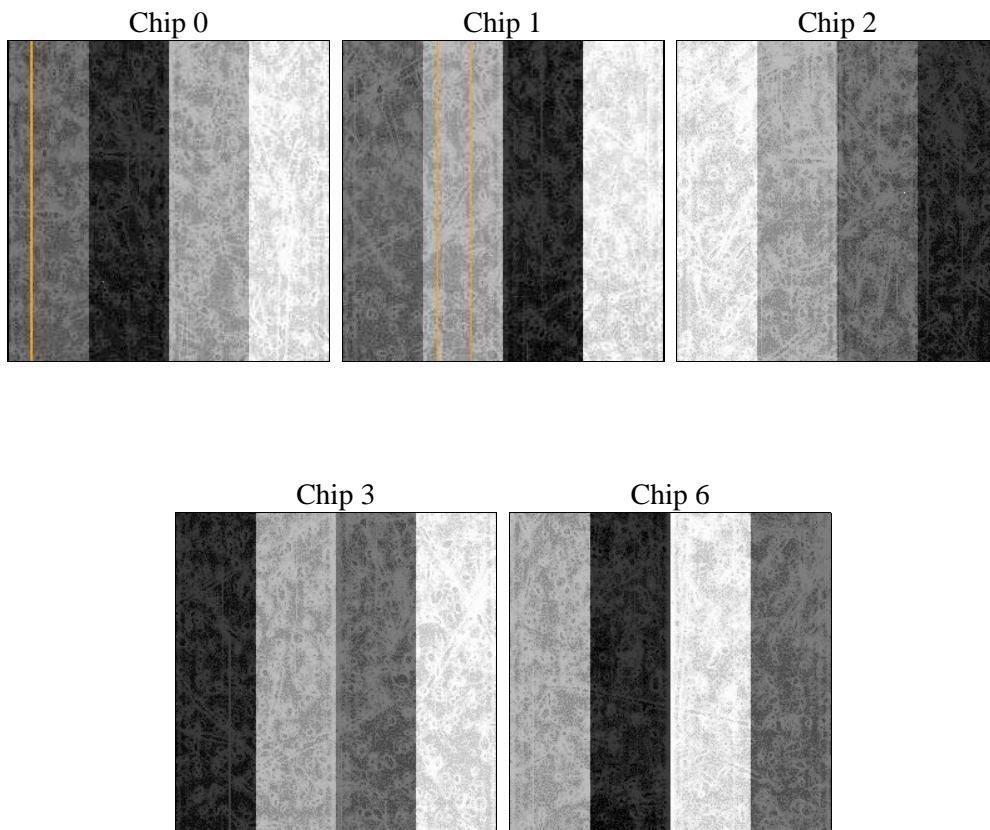
2 OBI

2.1 OBI

2.1.1 Images



2.1.2 Bias



2.1.3 Parameters

obi_num	0	Obi number	sched_exp_time	30000.000000	[s] Scheduled observation exposure time
ascdsver	8.5.1	Processing system revision	ontime	30144.277041256	Sum of GTIs [s]
caldbver	4.5.5	 	ontime0	30153.699941993	Sum of GTIs [s]
date	2012-12-15T05:20:40	Date and time of file creation	ontime1	30144.277031243	Sum of GTIs [s]
revision	3	Processing version of data	ontime2	30141.136011153	Sum of GTIs [s]
			ontime3	30144.277041256	Sum of GTIs [s]
			ontime6	30144.277001381	Sum of GTIs [s]
			l1events	984104	Number of level 1 events

2.1.4 Events

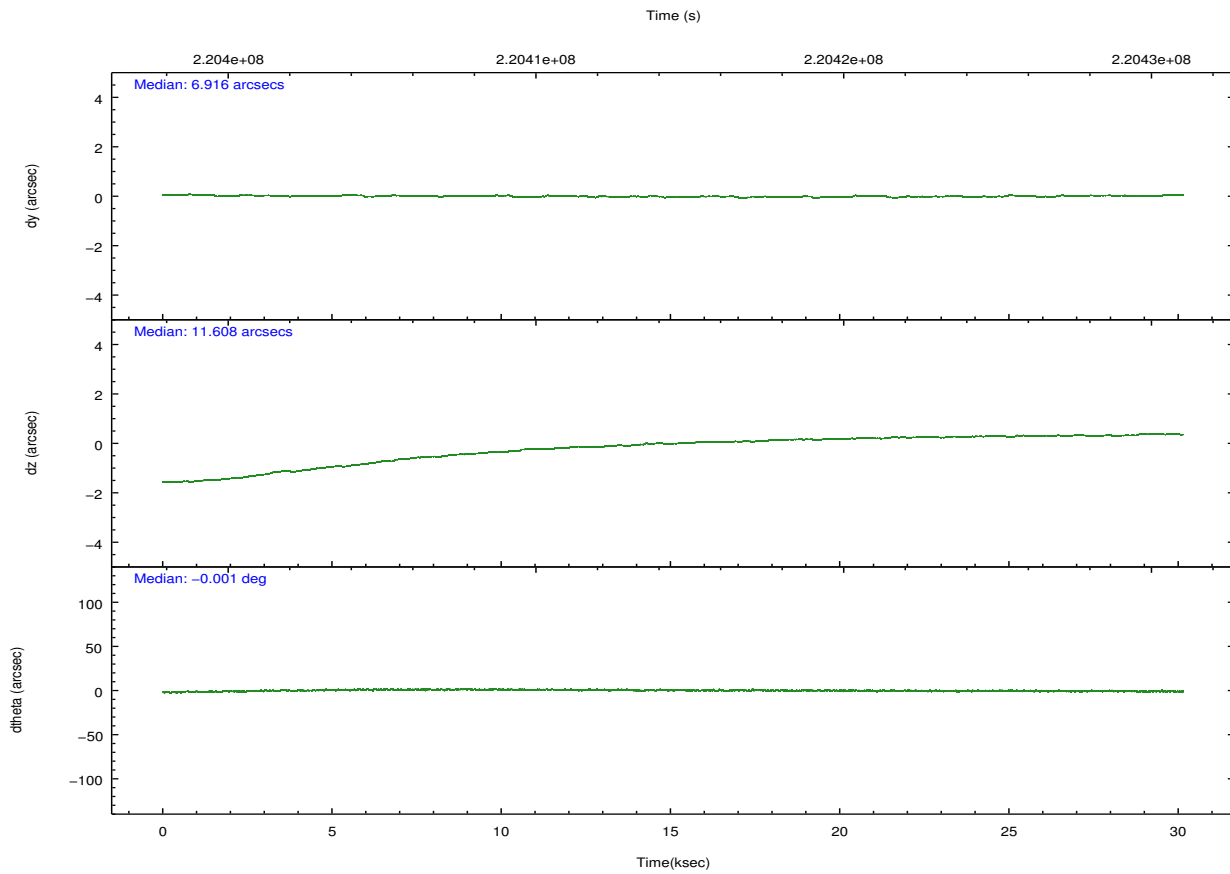
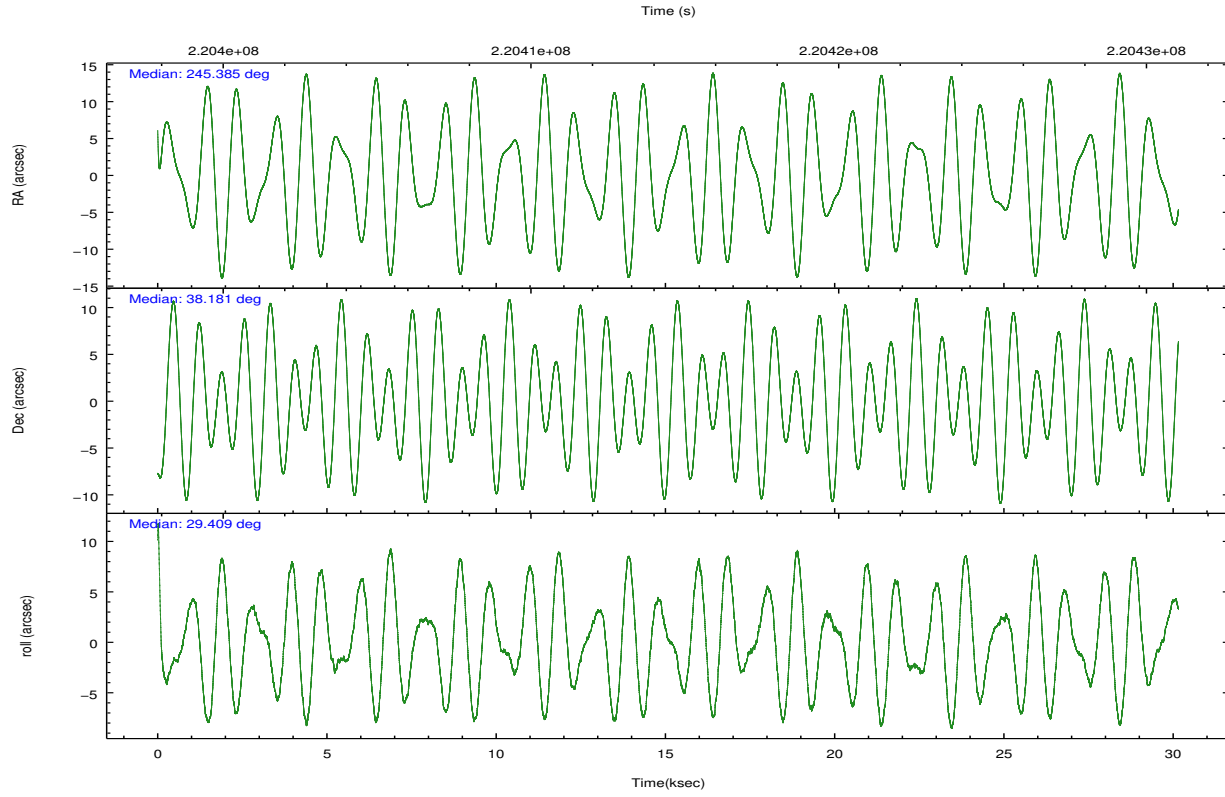
	ccd 0	ccd 1	ccd 2	ccd 3	ccd 6
level 1 events	182130	189388	211222	205144	196220
rejected events	162579	167726	191394	180823	176802
rejected %	89%	88%	90%	88%	90%

	ccd 0	ccd 1	ccd 2	ccd 3	ccd 6
grade 0 events	6916	7909	7582	11592	6675
	3%	4%	3%	5%	3%
grade 1 events	89	87	106	140	89
	0%	0%	0%	0%	0%
grade 2 events	4634	4713	4613	4435	4259
	2%	2%	2%	2%	2%
grade 3 events	2342	2520	2211	2458	2193
	1%	1%	1%	1%	1%
grade 4 events	2125	2430	2138	2300	2327
	1%	1%	1%	1%	1%
grade 5 events	7038	7274	6561	7877	7668
	3%	3%	3%	3%	3%
grade 6 events	3759	4349	3479	3764	4157
	2%	2%	1%	1%	2%
grade 7 events	155227	160106	184532	172578	168852
	85%	84%	87%	84%	86%

2.2 Compared Parameters

Parameter	Planned	Actual	Parameter	Planned	Actual
Instrument	ACIS	ACIS	Obspar format version number	7	7
Detector	ACIS-01236	ACIS-01236	Obspar file type	PREDICTED	ACTUAL
Grating	NONE	NONE	Obspar update status	NONE	UPDATED
Data mode	VFAINT	VFAINT	Number of optional ACIS chips dropped	0	0
Observation mode	POINTING	POINTING	On-chip summing requested	N	N
[deg] Pointing RA	245.367504	245.385122057946	Subarray requested	NONE	NONE
[deg] Pointing Dec	38.157168	38.1807933044819	Alternating exposures requested	N	N
[deg] Pointing Roll	29.214630	29.41243602875975	[s] Primary exposure time	0.000000	3.1
[mm] SIM focus pos	-0.782348	-0.7809083437167272			
[mm] SIM defocus	0	0.001439871863259334			
[mm] SIM translation stage pos	-229.442463	-229.4438428438578			
[mm] SIM translation stage offset	-4.15	-4.148610159071865			
[s] Observation start time (MET)	220399532.184000	220398390.82578			
Observation start date	2004-12-25T22:04:28	2004-12-25T21:46:30			
[s] Observation end time (MET)	220429532.184000	220430576.85223			
Observation end date	2004-12-26T06:24:28	2004-12-26T06:42:56			
Read mode	TIMED	TIMED			

2.3 Aspect

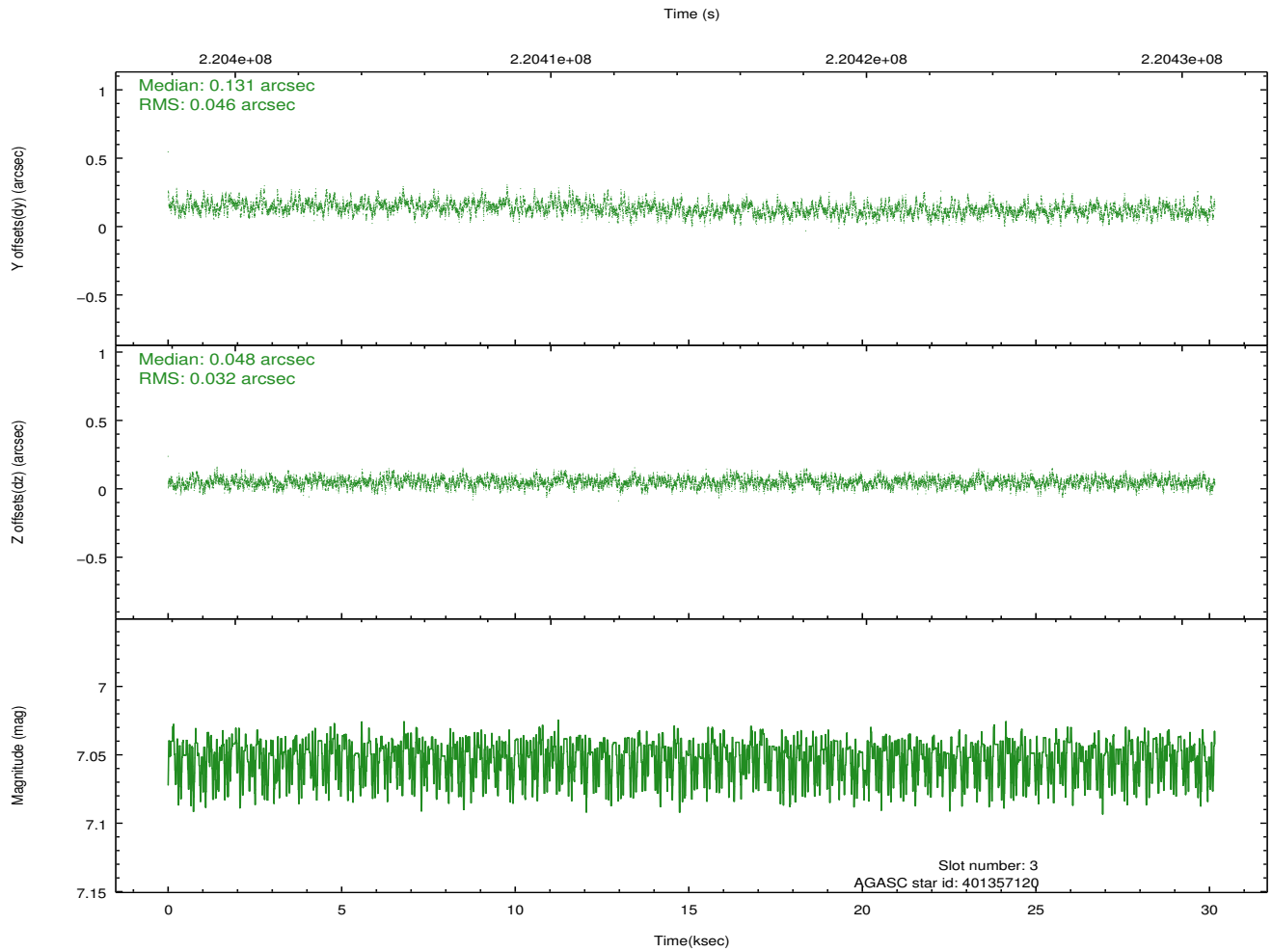
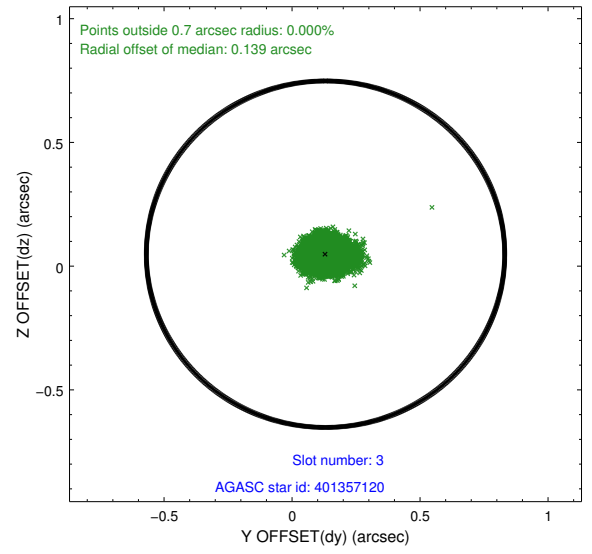
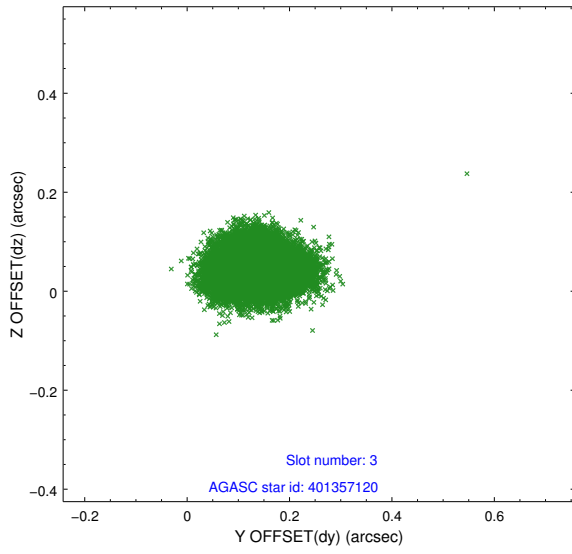


Slot Statistics

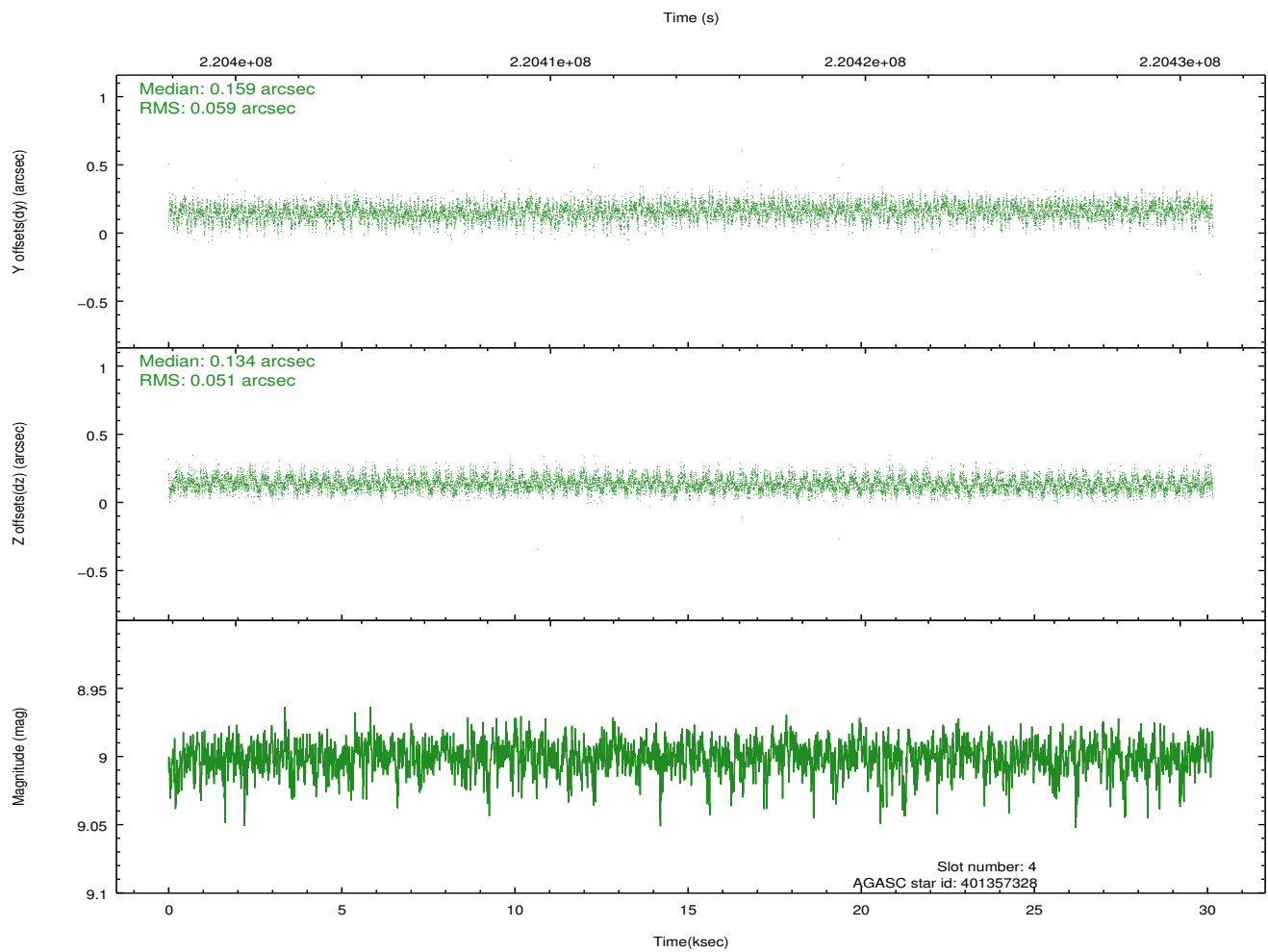
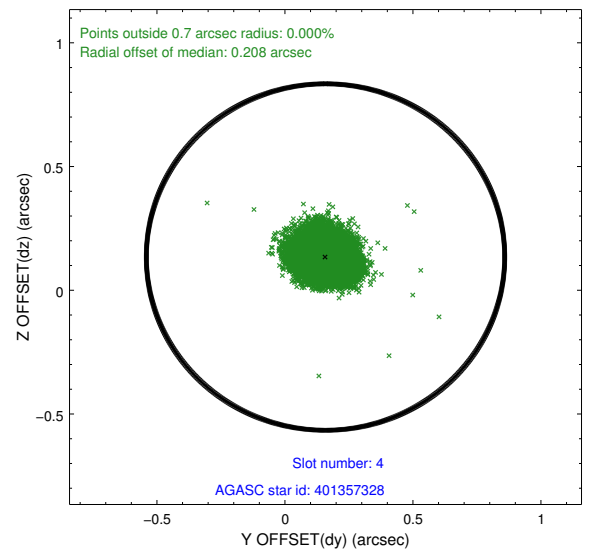
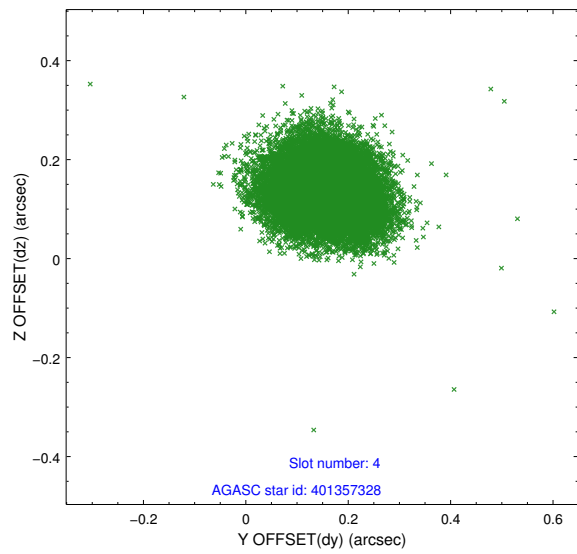
slot	status	id	mag	n_pts	med_dy	med_dz	dr1	dr2	ra	dec	mean_y	mean_z
0	FID	ACIS-I-1	7.24	7355	0.078	-0.025	0.010	0.018	0.000000	0.000000	932.74	-920.04
1	FID	ACIS-I-5	7.23	7356	-0.206	0.087	0.012	0.023	0.000000	0.000000	-1815.56	977.57
2	FID	ACIS-I-6	7.25	7356	0.036	0.008	0.012	0.020	0.000000	0.000000	398.23	1622.03
3	GUIDE	401357120	7.05	14710	0.131	0.048	0.059	0.097	244.752378	37.765715	-2212.63	-370.57
4	GUIDE	401357328	9.00	14701	0.159	0.134	0.083	0.132	246.205033	38.152914	2067.49	-1160.86
5	GUIDE	401357888	8.51	14710	0.137	-0.160	0.075	0.123	244.567474	38.275306	-1760.58	1483.13
6	GUIDE	401347064	7.72	14708	-0.174	-0.002	0.046	0.075	245.989801	38.641750	2381.47	674.21
7	GUIDE	401352720	8.06	14709	-0.252	-0.023	0.071	0.115	246.356113	37.910237	2024.55	-2133.08

2.4 Star Slots

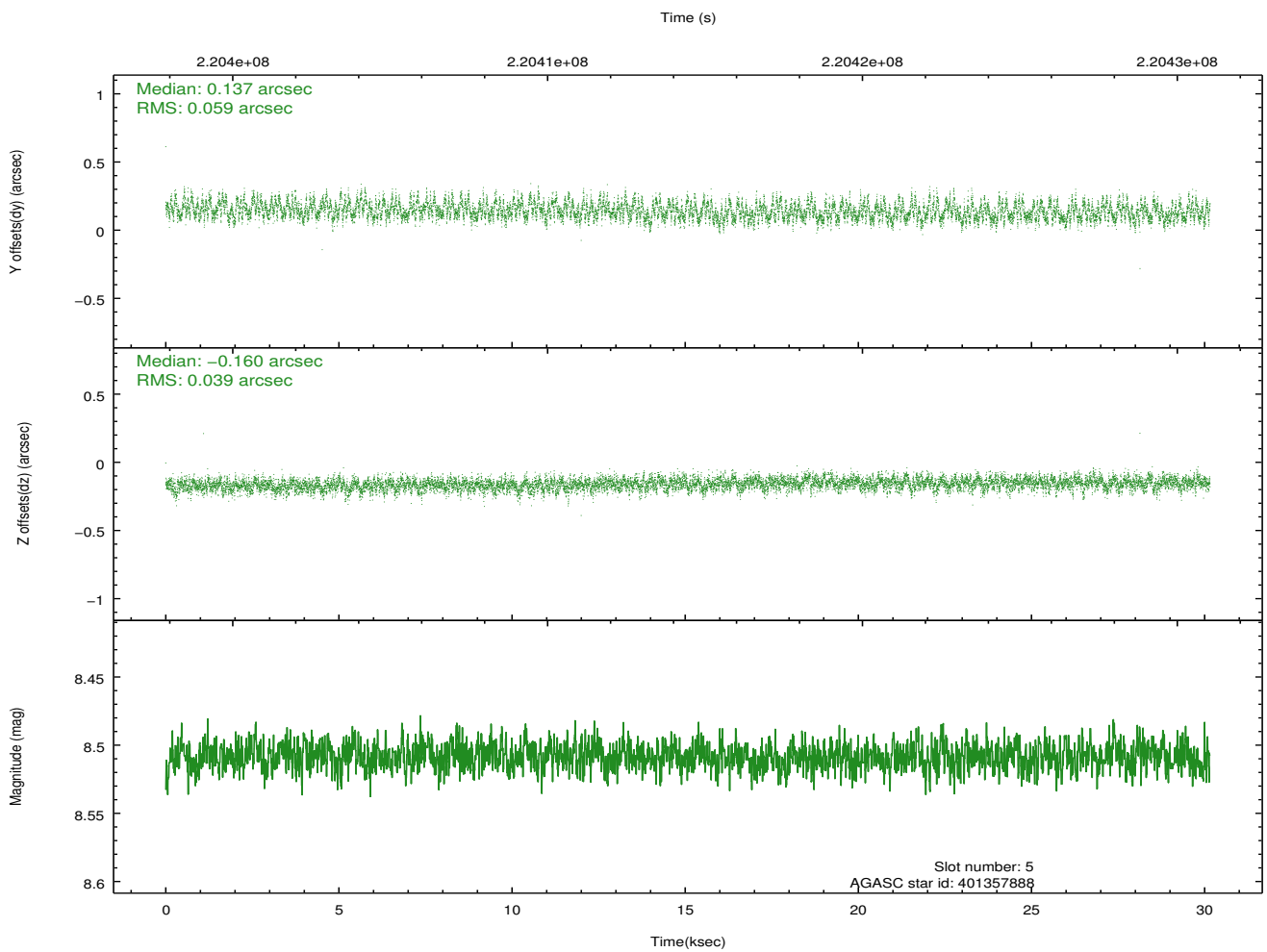
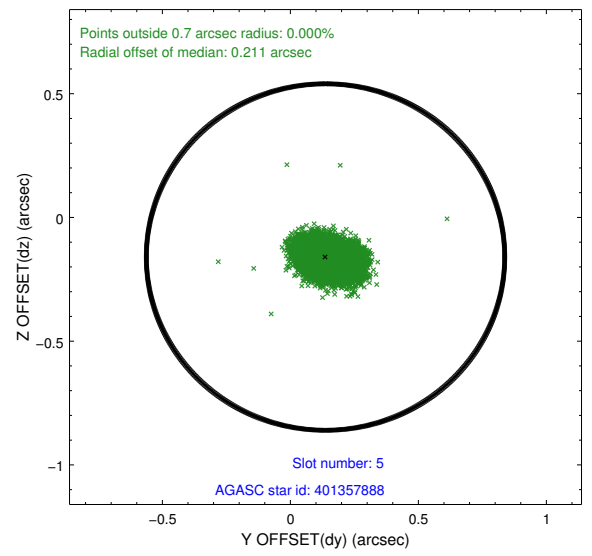
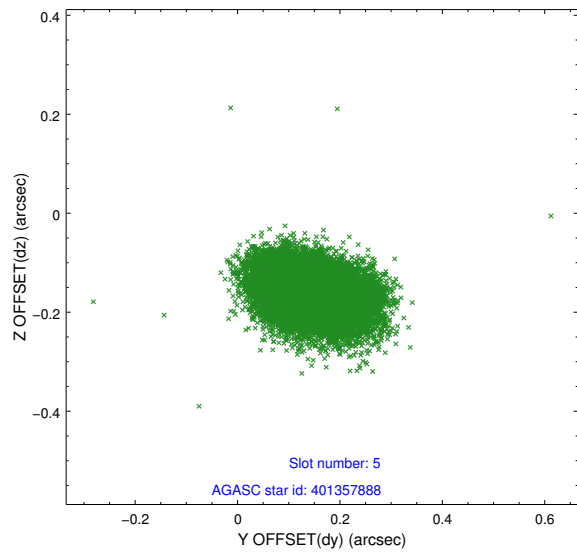
2.4.1 Slot 3



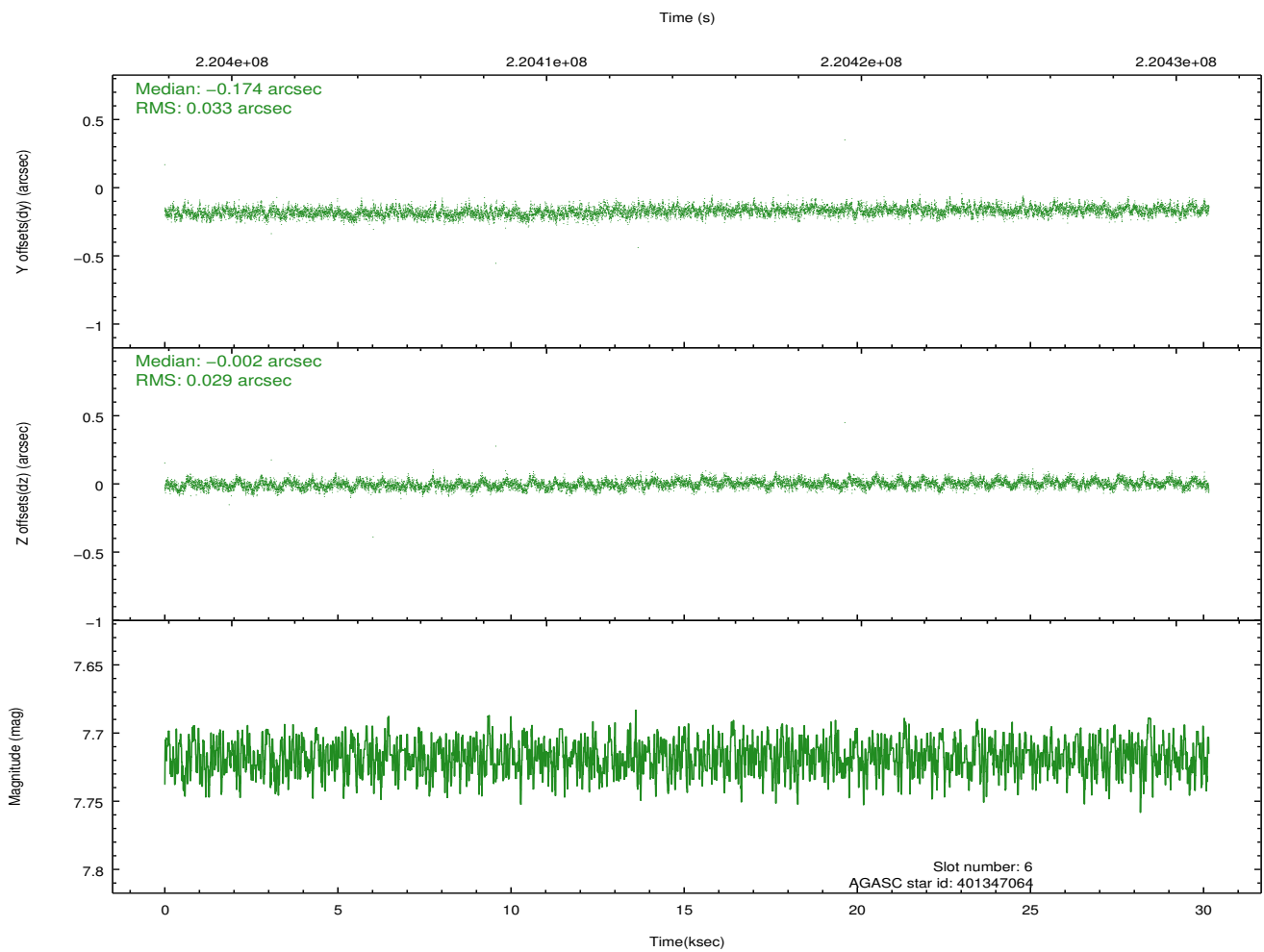
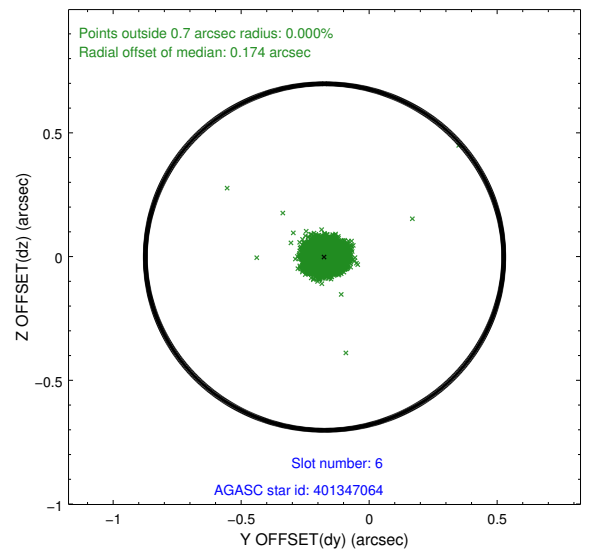
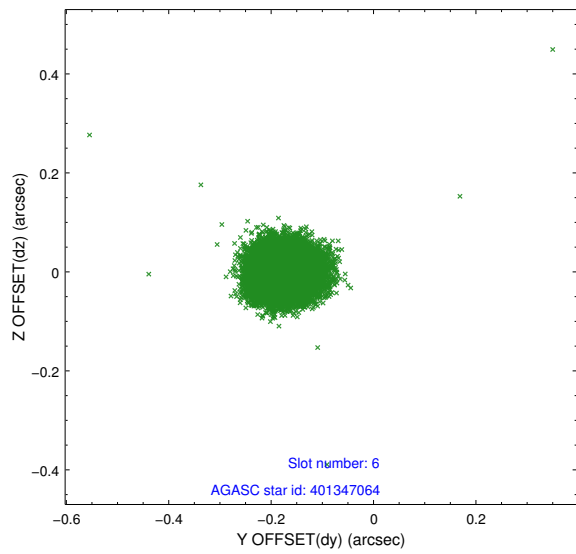
2.4.2 Slot 4



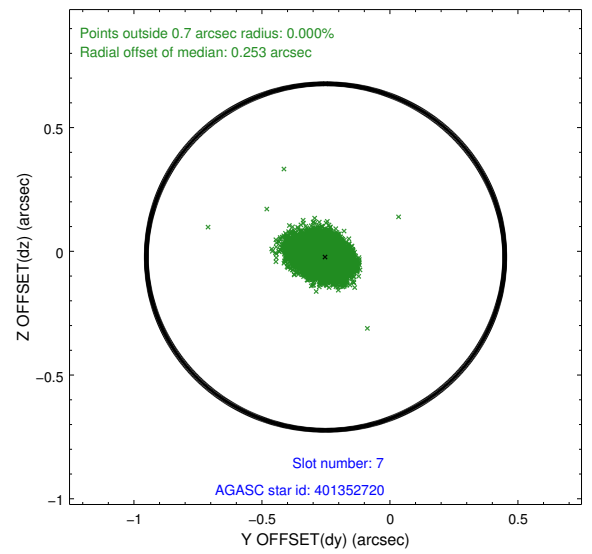
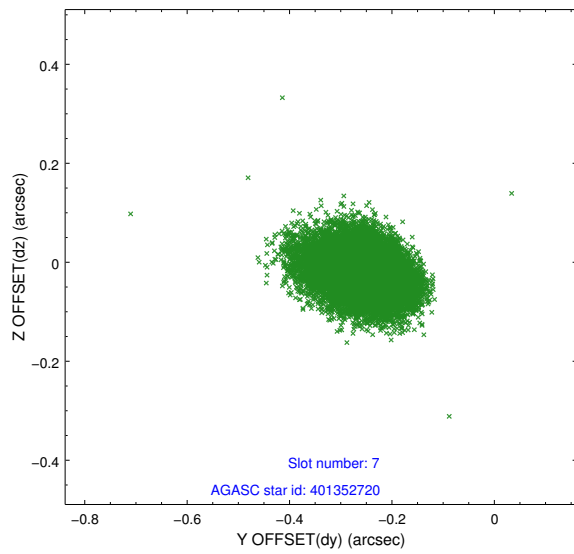
2.4.3 Slot 5



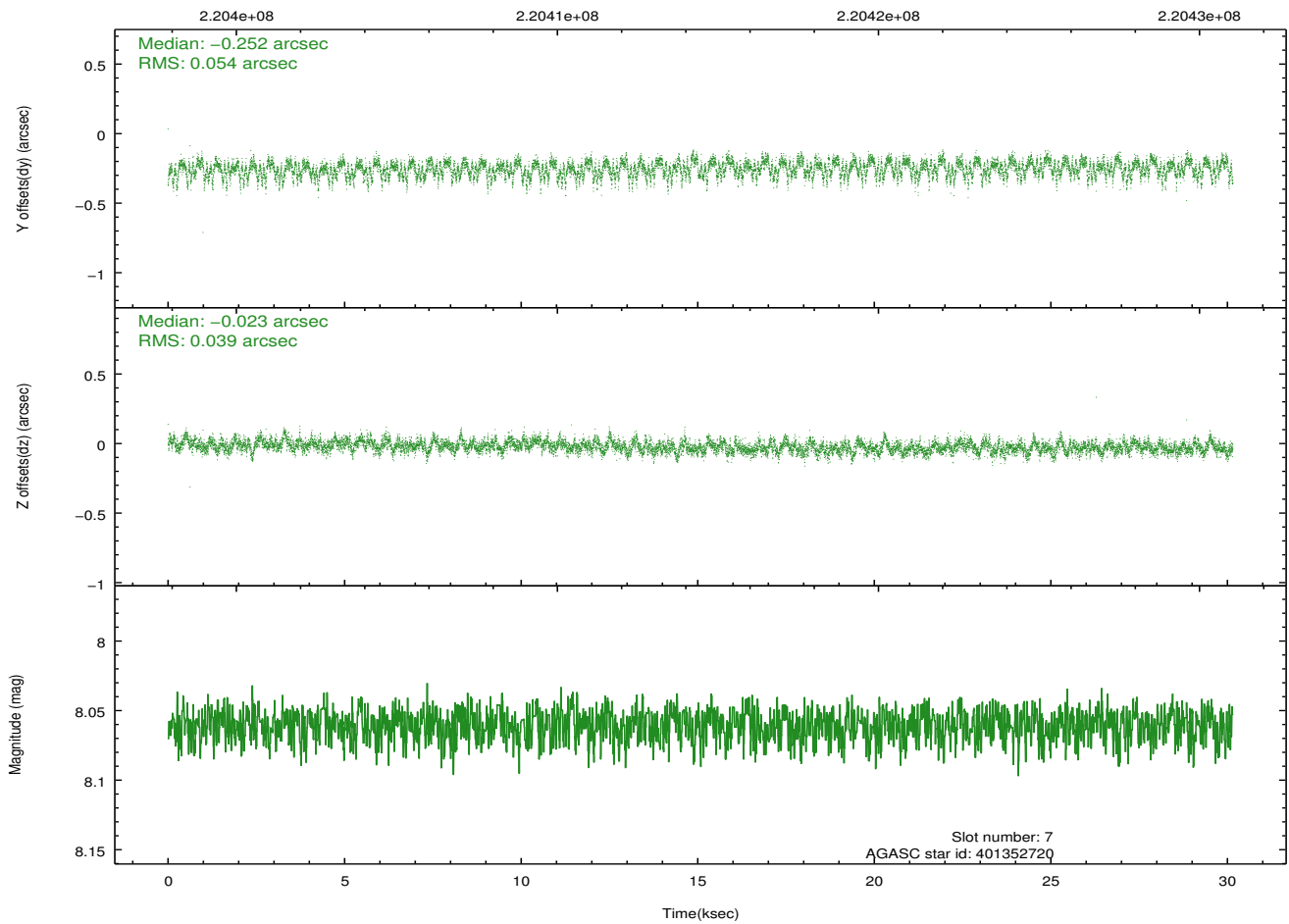
2.4.4 Slot 6



2.4.5 Slot 7

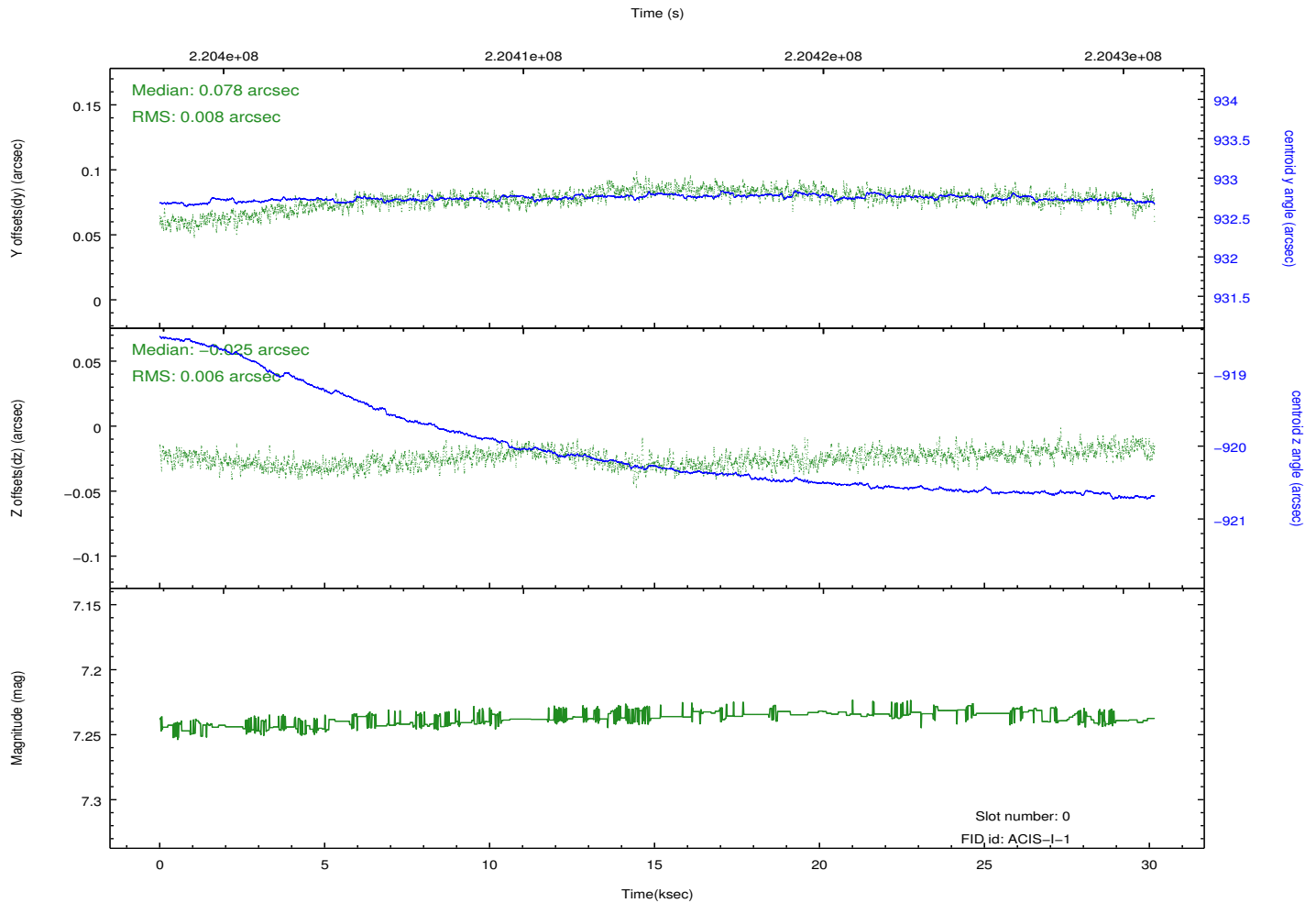
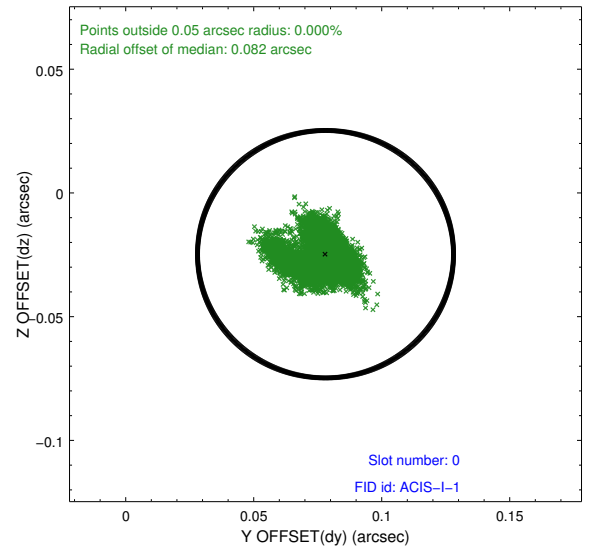
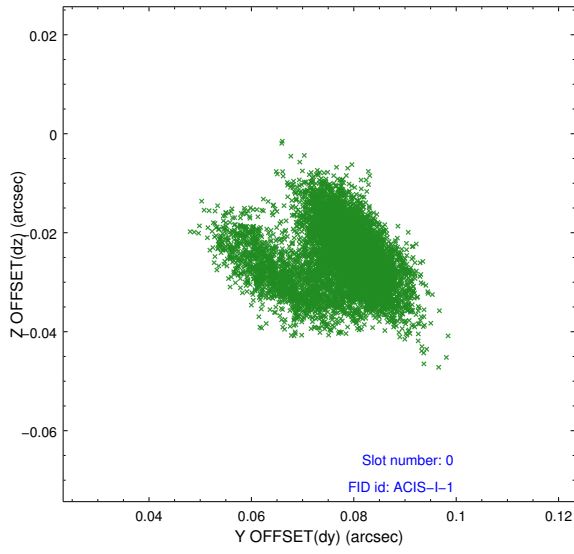


Time (s)

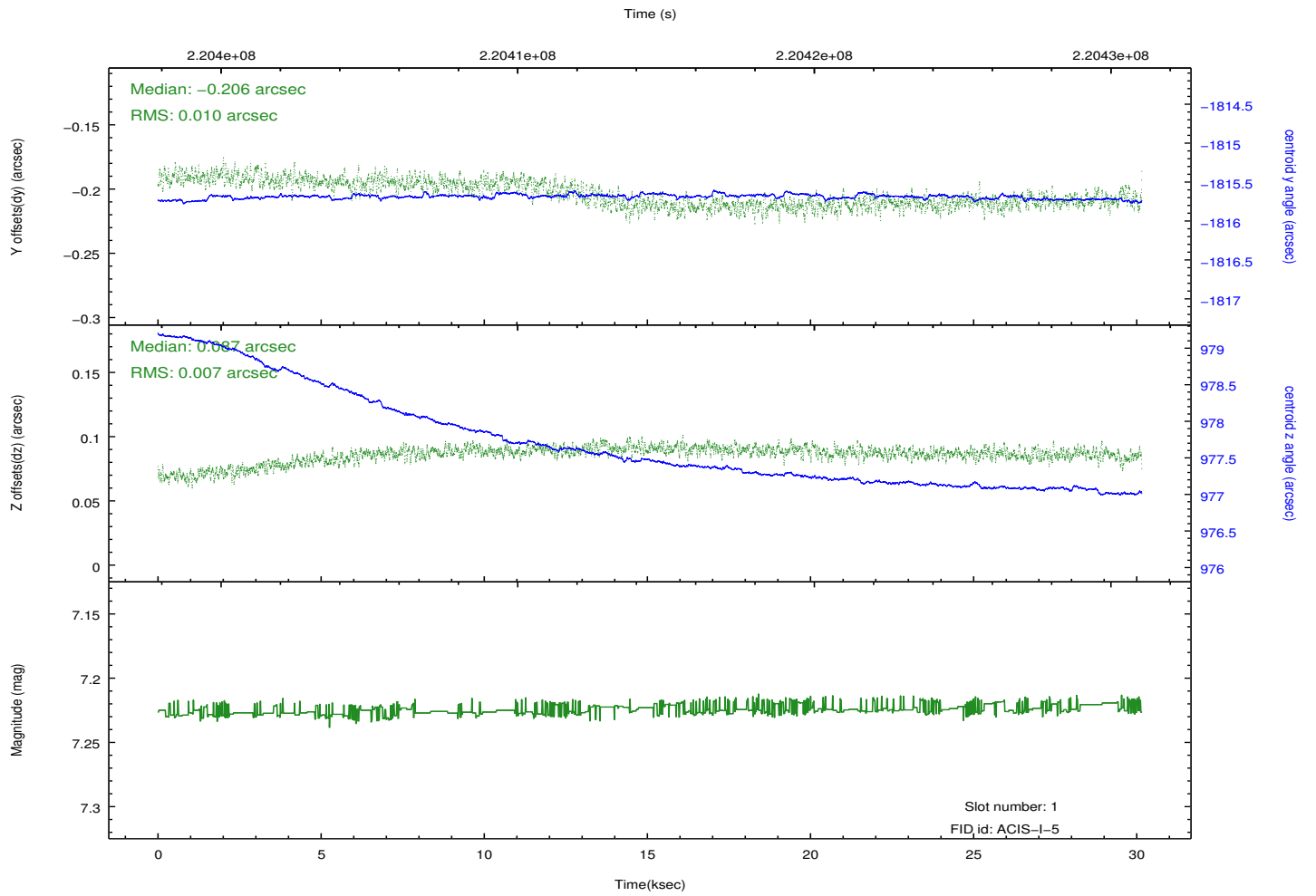
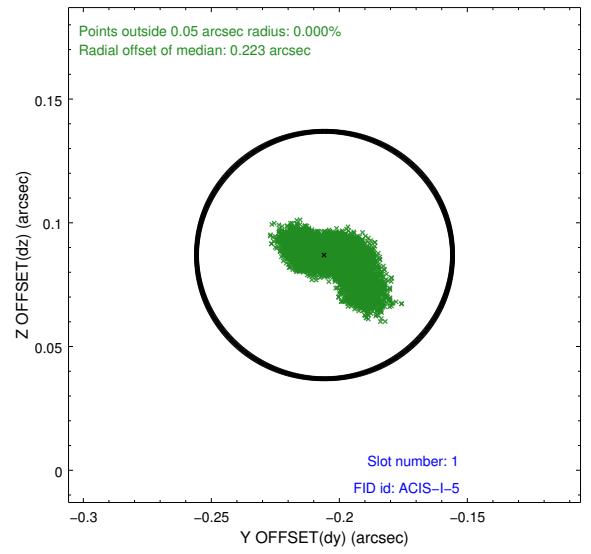
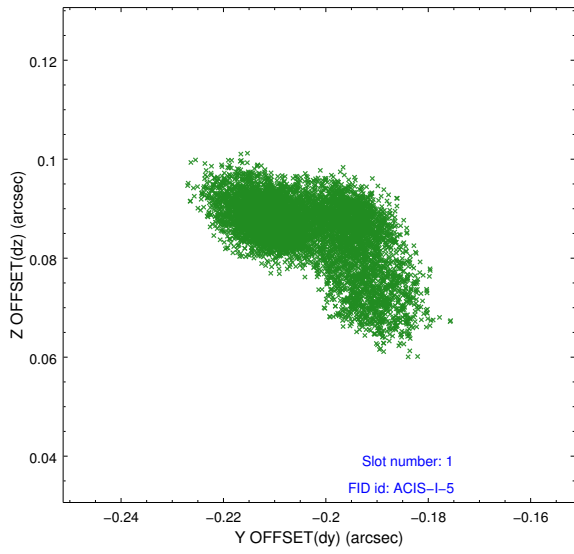


2.5 FID Slots

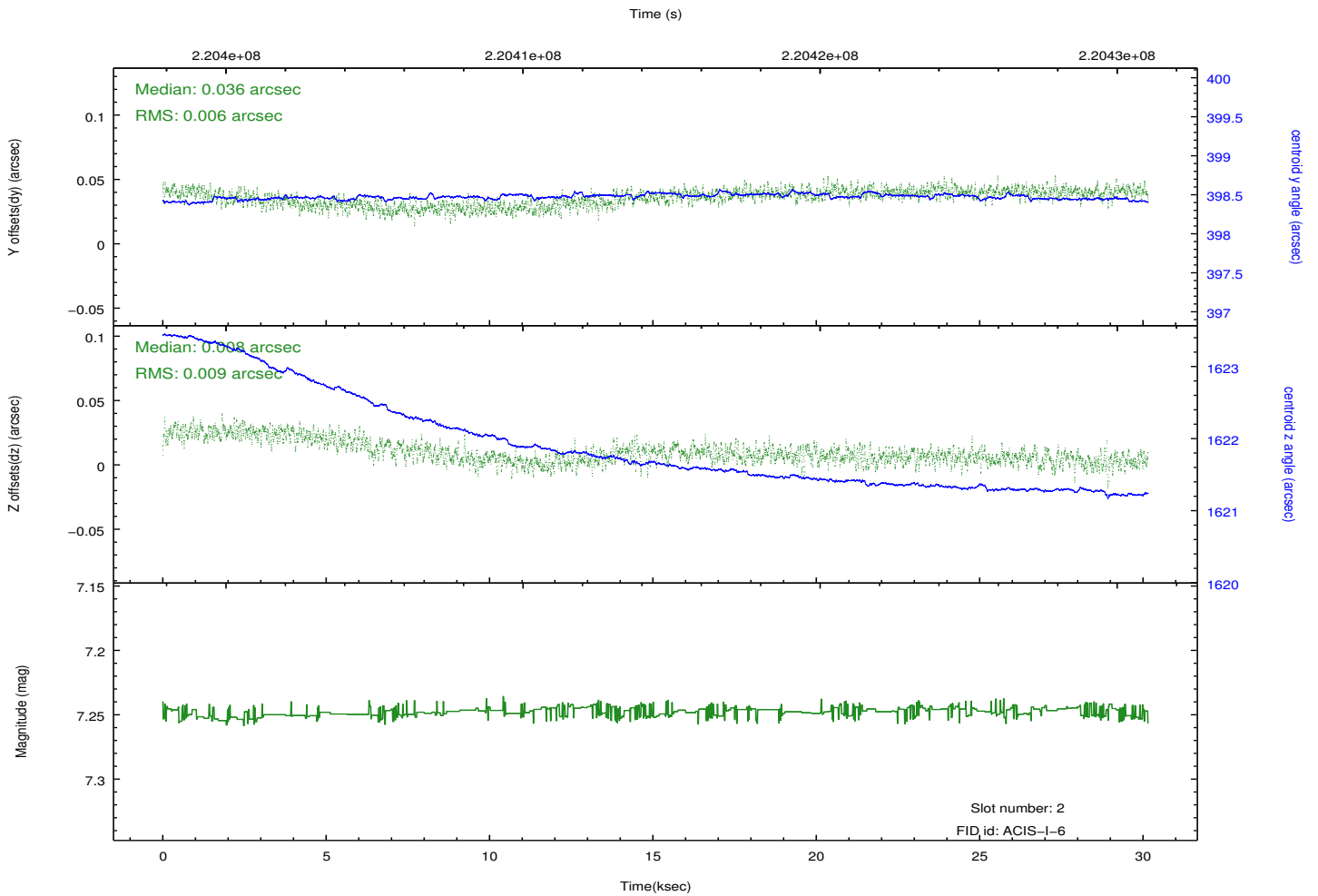
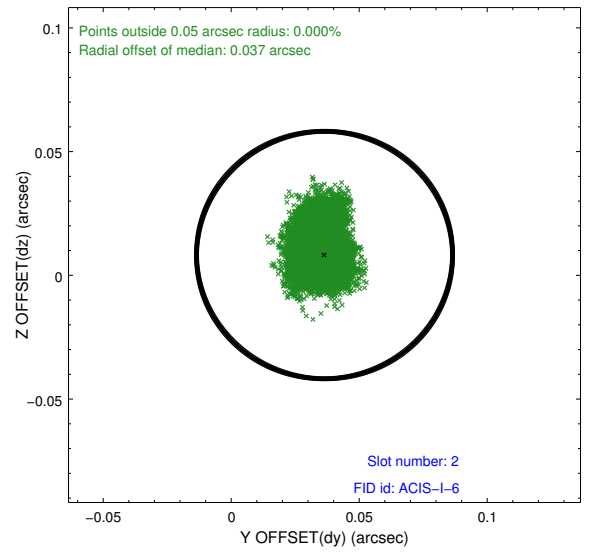
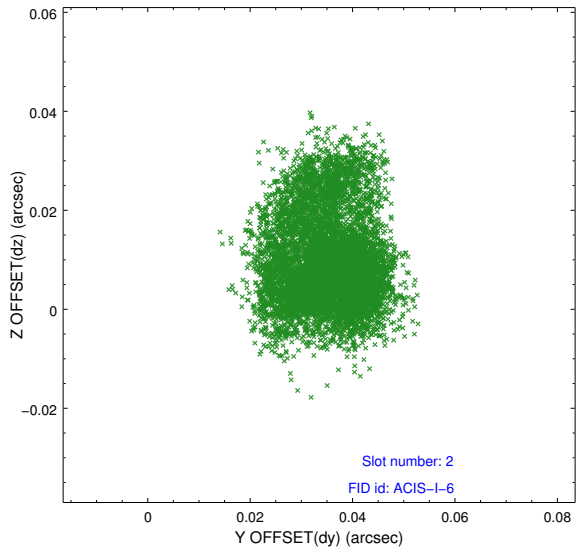
2.5.1 Slot 0



2.5.2 Slot 1



2.5.3 Slot 2



A Summary

A.1 Status

V&V Scientist	Jen Lauer
V&V Date (YYYY-MM-DD)	2013.01.08
V&V Edition	1
V&V Disposition and Status	OK
V&V Charge Time	30.14427

A.2 Comments