

V&V Reference Report

L2 ASCDS Version : 10.9.1

Observation 6182 - L2 Version 5
Chandra X-Ray Center

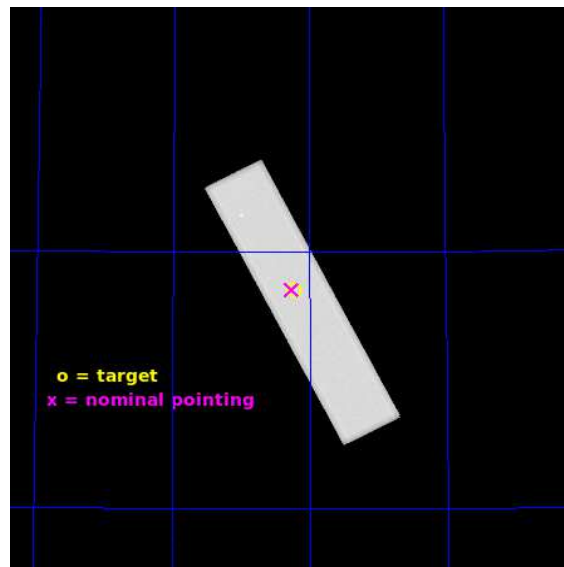
L2 Processing Date : Oct 7 2020

Contents

1	Front	2
2	OBI	3
2.1	OBI	3
2.1.1	Images	3
2.1.2	Parameters	4
2.1.3	Events	4
2.2	Compared Parameters	5
2.3	Aspect	6
2.4	Star Slots	9
2.4.1	Slot 3	9
2.4.2	Slot 4	10
2.4.3	Slot 5	11
2.4.4	Slot 6	12
2.4.5	Slot 7	13
2.5	FID Slots	14
2.5.1	Slot 0	14
2.5.2	Slot 1	15
2.5.3	Slot 2	16
A	Summary	17
A.1	Status	17
A.2	Comments	17

1 Front

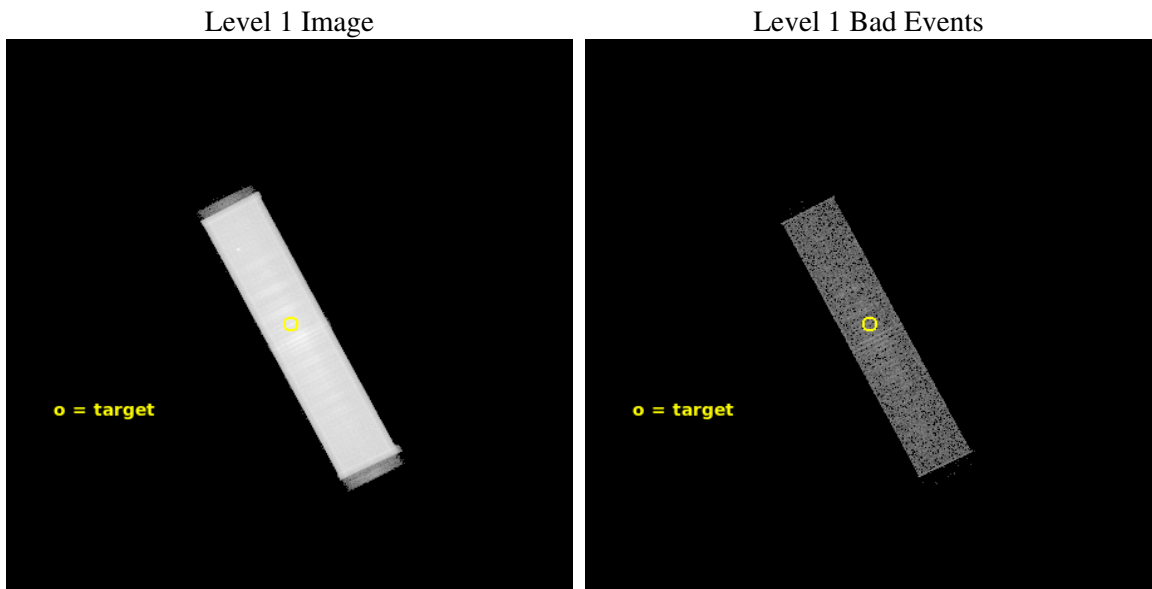
seq_num	500431	Sequence number
obs_id	6182	Observation id
title	THE NEXT GEMINGA: TAKING THE PULSE OF THE EGRET SOURCE 3EG J1835+5918	Proposal title
observer	Jules Halpern	Principal investigator
object	3EG J1835+5918	Source name
ra_targ	279.057083	Observer's specified target RA [deg]
dec_targ	59.425028	Observer's specified target Dec [deg]
ra_nom	279.06434079592	Nominal RA [deg]
dec_nom	59.426442291925	Nominal Dec [deg]
roll_nom	62.476268369312	Nominal Roll [deg]
revision	5	Processing version of data
ontime	45181.233296096	[s]
livetime	45016.493295253	Ontime multiplied by DTCOR
l2events	1597988	Number of level 2 events



2 OBI

2.1 OBI

2.1.1 Images



2.1.2 Parameters

obi_num	0	Obi number	sched_exp_time	45000.000000	[s] Scheduled observation exposure time
ascdsver	10.9.1	Processing system revision	ontime	45181.233296096	[s]
caldsver	4.9.2	 	l1events	2506307	Number of level 1 events
date	2020-10-07T03:55:46	Date and time of file creation			
revision	5	Processing version of data			

2.1.3 Events

Level 1 Events

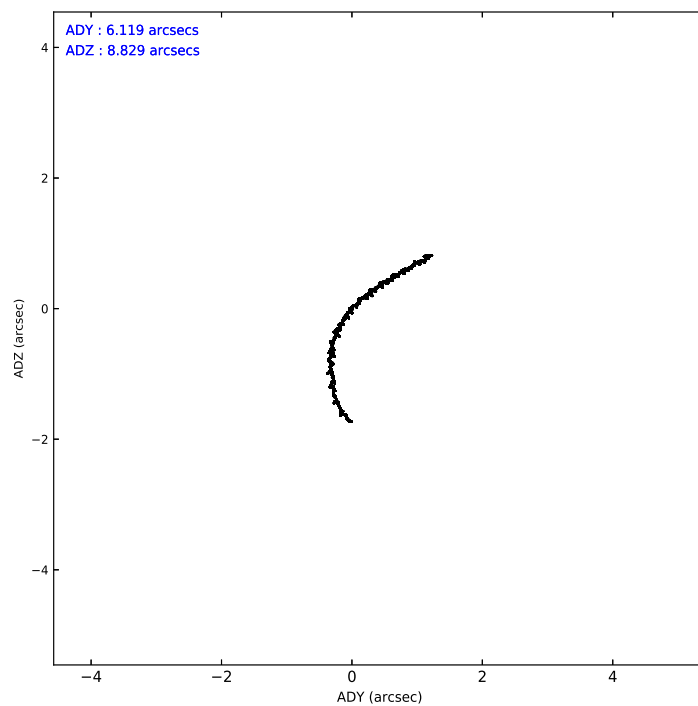
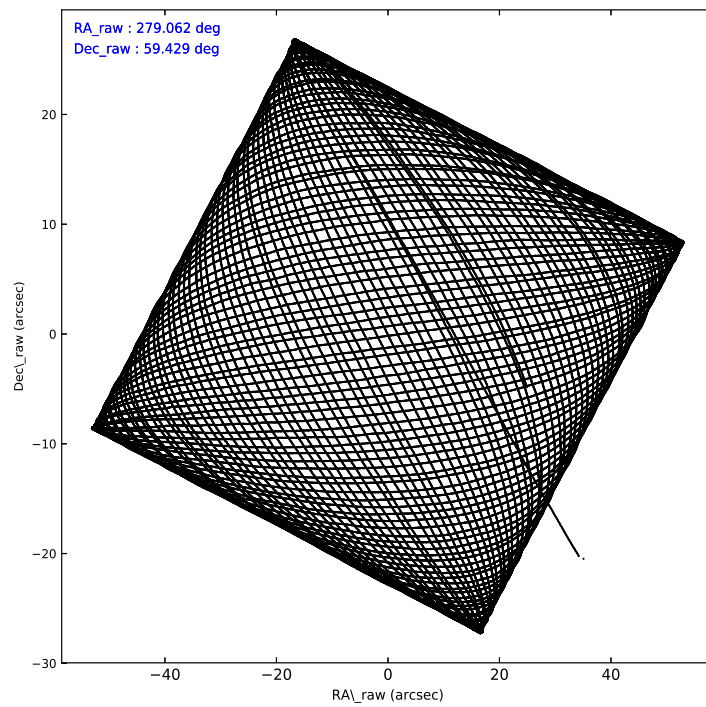
	segment 1	segment 2	segment 3
level 1 events	3939	2501183	1185
rejected events	151	101290	44
rejected %	3%	4%	3%

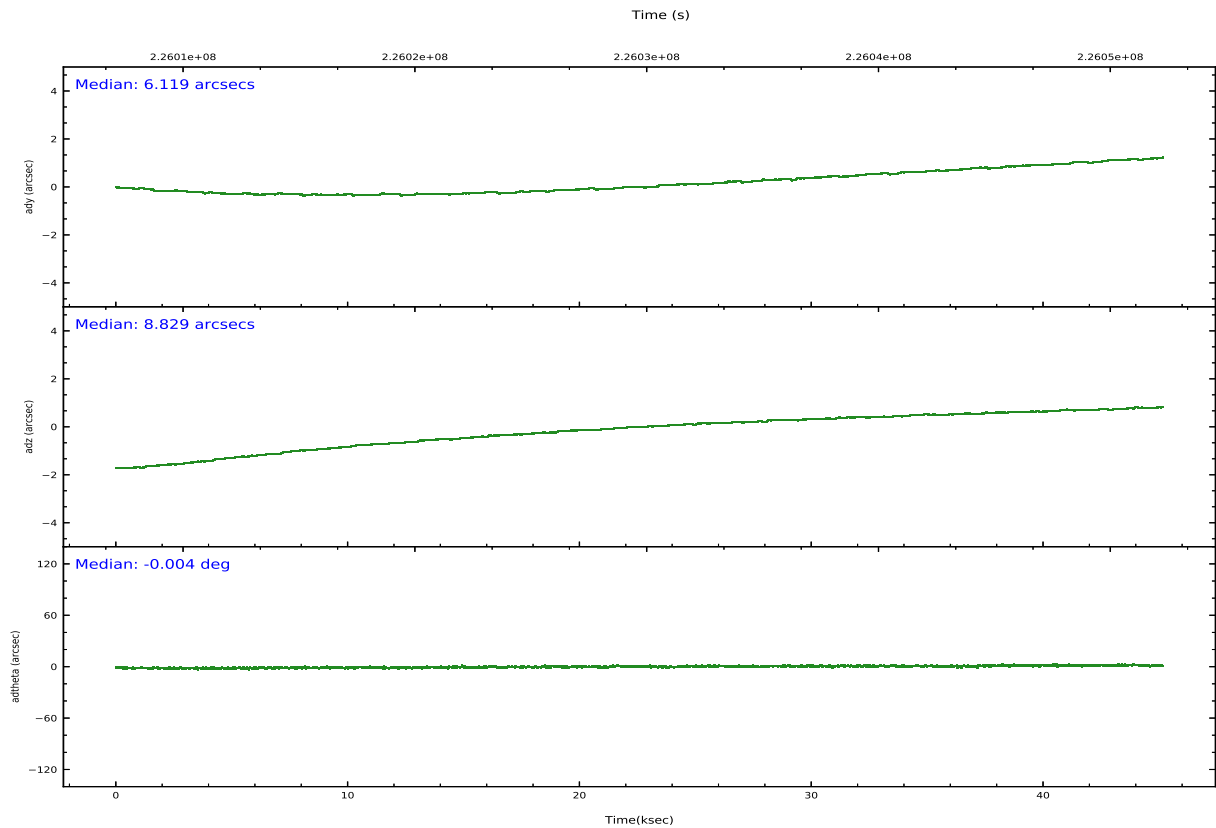
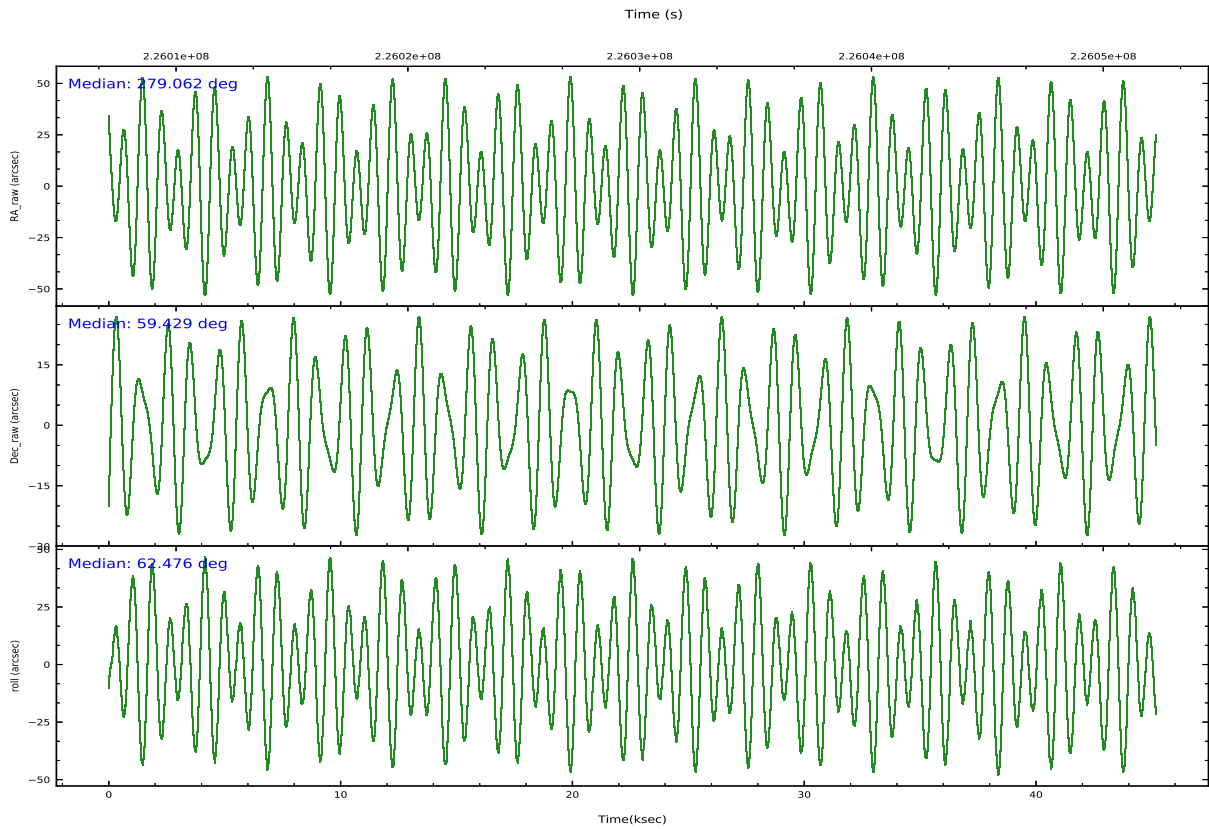
2.2 Compared Parameters

Parameter	Planned	Actual
Instrument	HRC	HRC
Detector	HRC-S	HRC-S
Grating	NONE	NONE
Data mode	OBSERVING	OBSERVING
Observation mode	POINTING	POINTING
[deg] Pointing RA	279.066777	279.06434079592
[deg] Pointing Dec	59.400643	59.426442291925
[deg] Pointing Roll	62.408029	62.476268369312
[mm] SIM focus pos	-1.429586	-1.428180813131781
[mm] SIM defocus	0.1037507710433287	0.1051558262725154
[mm] SIM translation stage pos	250.455976	250.466033080201
[mm] SIM translation stage offset	0	-0.01005468664627074
[s] Observation start time (MET)	226007279.184000	226006117.39158
Observation start date	2005-02-28T19:46:55	2005-02-28T19:28:37
[s] Observation end time (MET)	226052279.184000	226053173.09371
Observation end date	2005-03-01T08:16:55	2005-03-01T08:32:53

Parameter	Planned	Actual
Obspar version number	8	8
Obspar file type	PREDICTED	ACTUAL
Obspar update status	NONE	UPDATED

2.3 Aspect



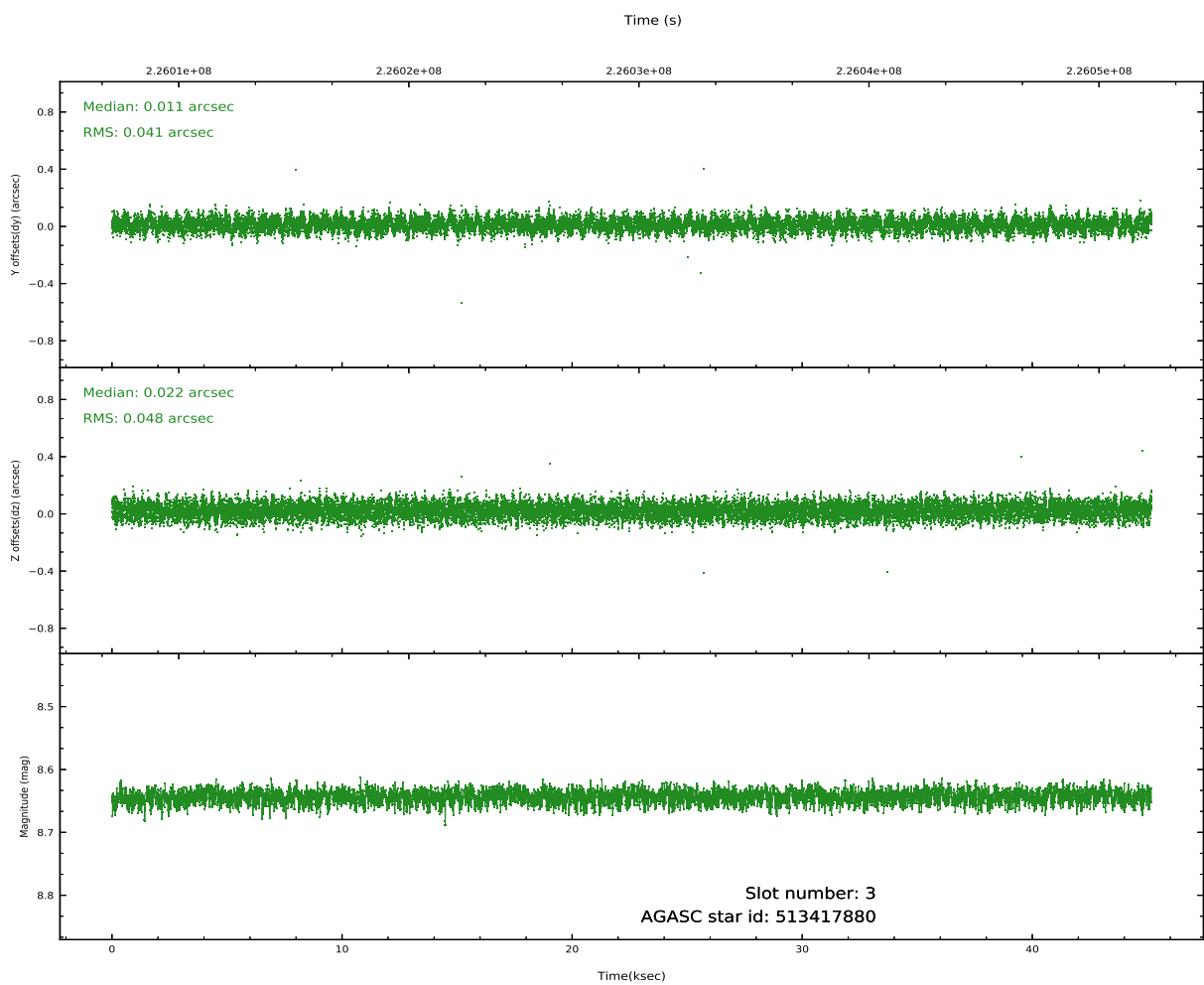
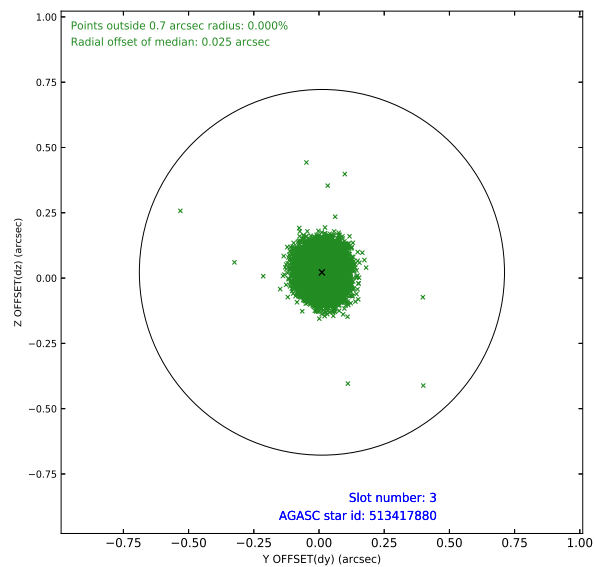
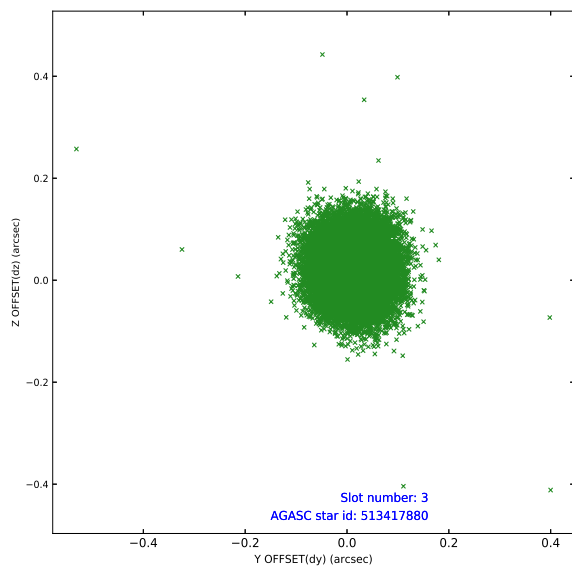


Slot Statistics

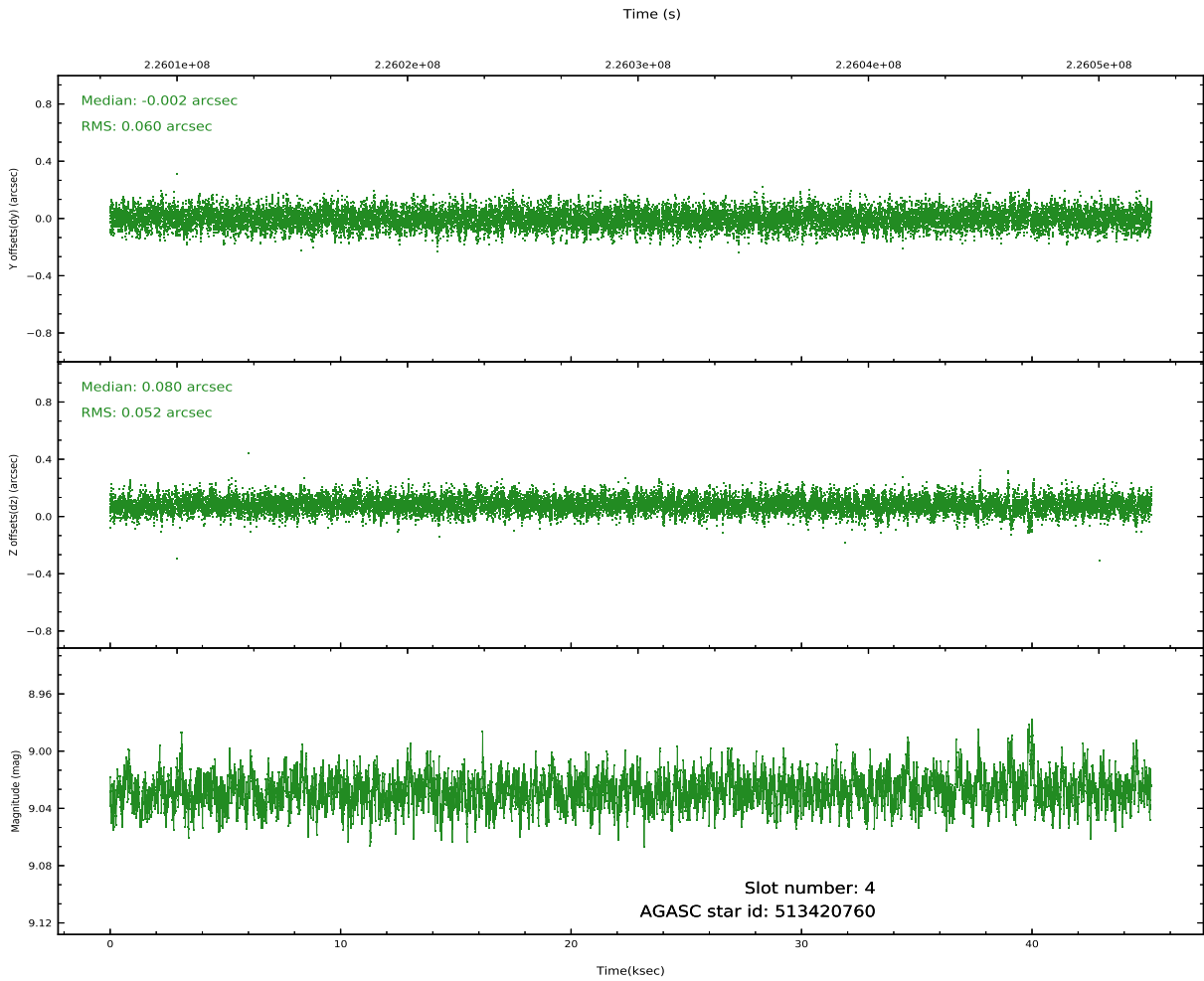
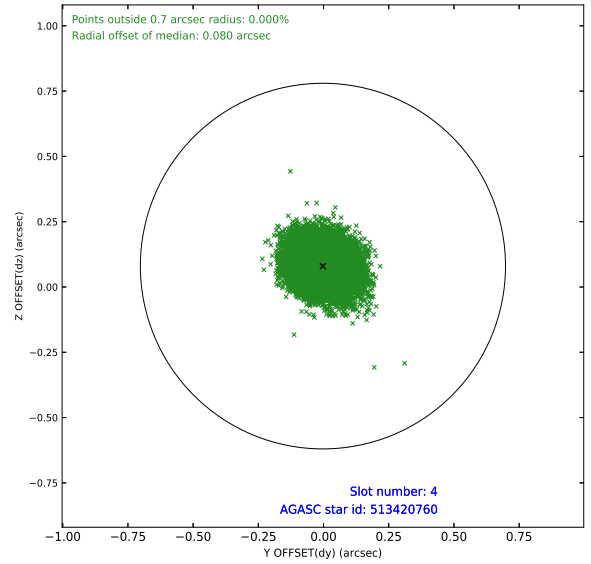
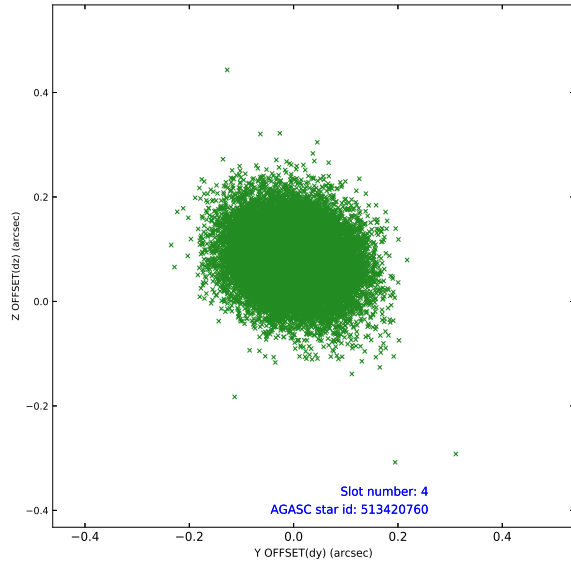
slot	status	used	id	mag	n_pts	frac_pts	med_dy	med_dz	dr1	dr2	ra	dec	mean_y	mea
0	FID		HRC-S-1	7.02	11021	1.000	0.088	-0.170	0.031	0.041	0.000000	0.000000	-1160.47	-457
1	FID		HRC-S-2	7.03	11020	1.000	0.190	-0.107	0.011	0.016	0.000000	0.000000	1239.21	-449
2	FID		HRC-S-3	7.04	11018	1.000	0.113	-0.026	0.037	0.047	0.000000	0.000000	-1163.07	572
3	GUIDE	used	513417880	8.64	22033	1.000	0.011	0.022	0.067	0.107	279.584245	59.253862	-23.74	-1086
4	GUIDE	used	513420760	9.03	22021	1.000	-0.002	0.080	0.084	0.140	277.675033	59.117633	-2070.56	1819
5	GUIDE	used	513422640	8.02	22035	1.000	-0.038	0.017	0.067	0.108	277.976729	59.419970	-848.95	1809
6	GUIDE	used	513419672	8.92	22034	1.000	-0.051	-0.049	0.100	0.157	278.251329	59.888562	882.34	2123
7	GUIDE	used	515114104	9.37	22018	1.000	0.087	-0.073	0.113	0.190	280.808618	59.672771	2371.87	-2332

2.4 Star Slots

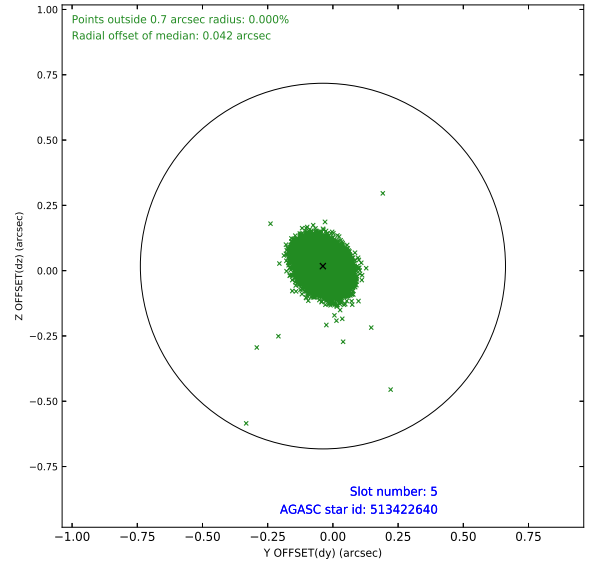
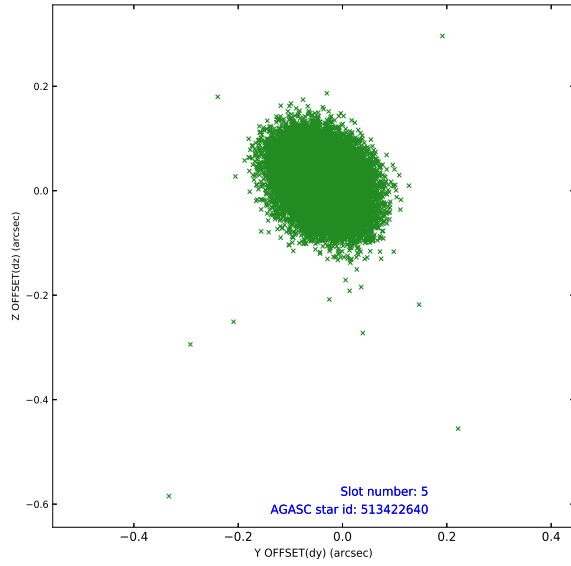
2.4.1 Slot 3



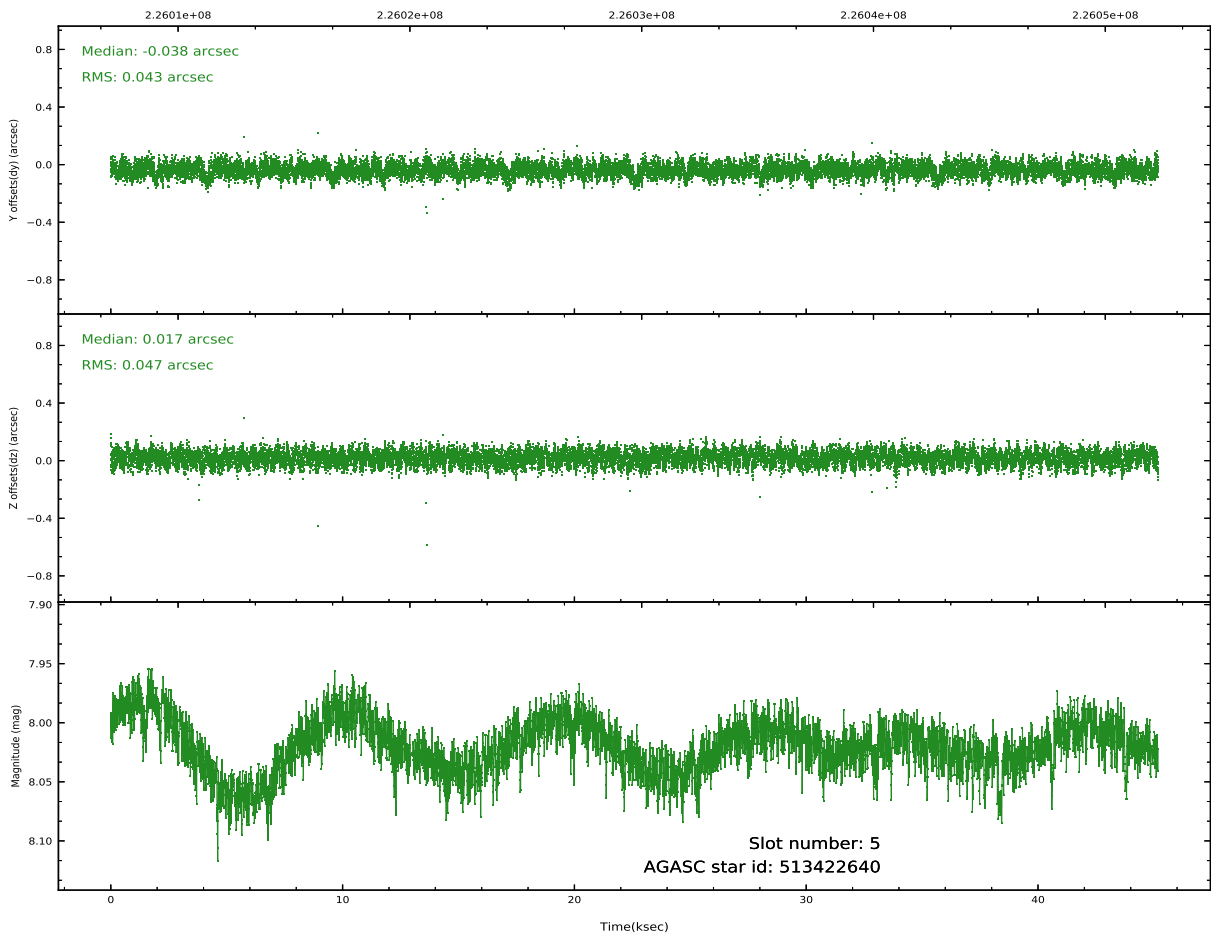
2.4.2 Slot 4



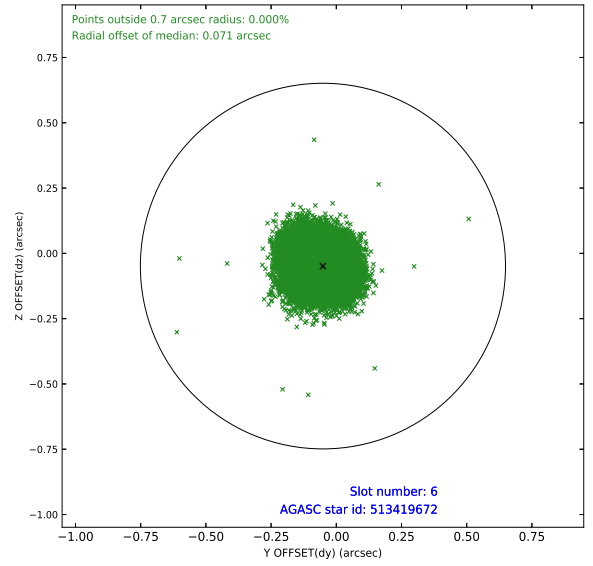
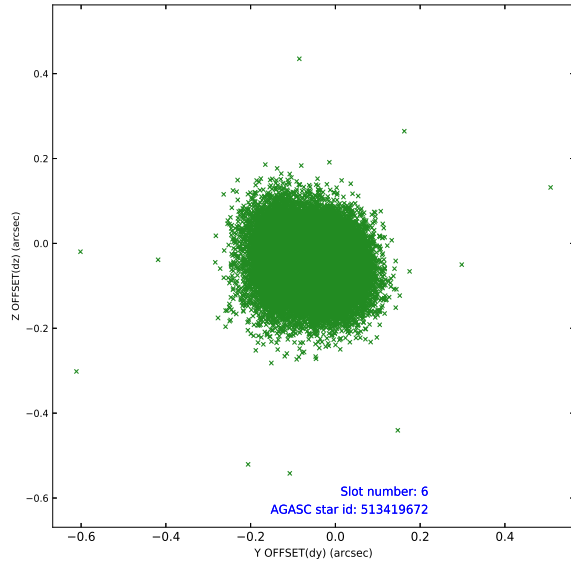
2.4.3 Slot 5



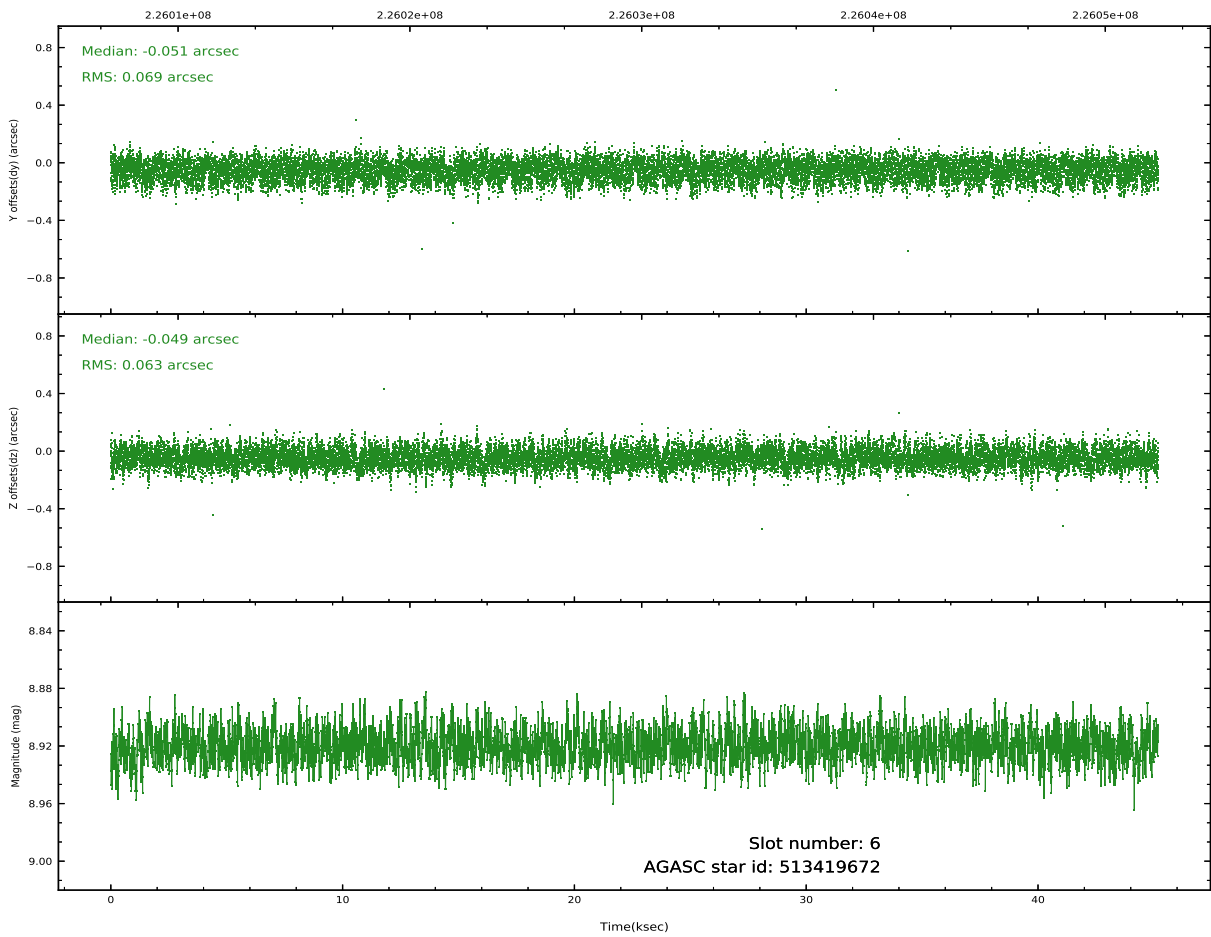
Time (s)



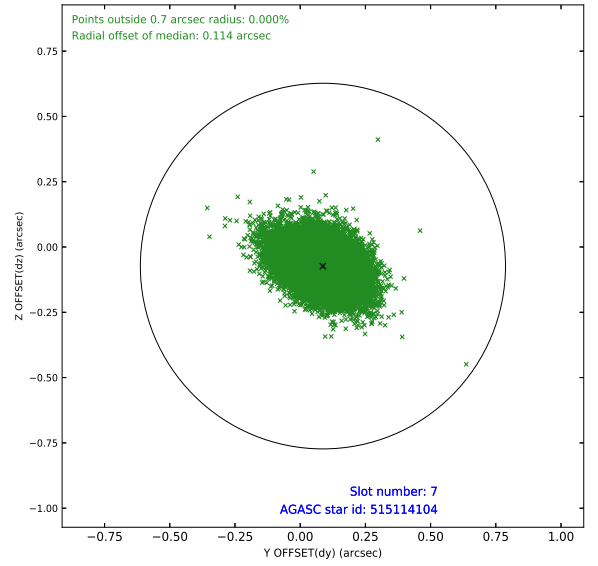
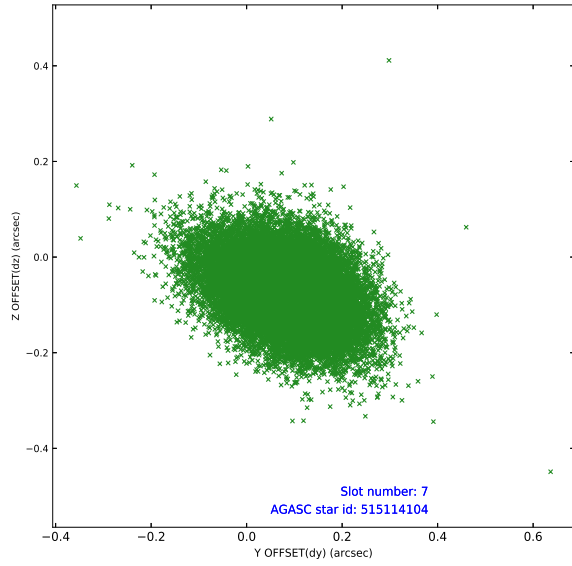
2.4.4 Slot 6



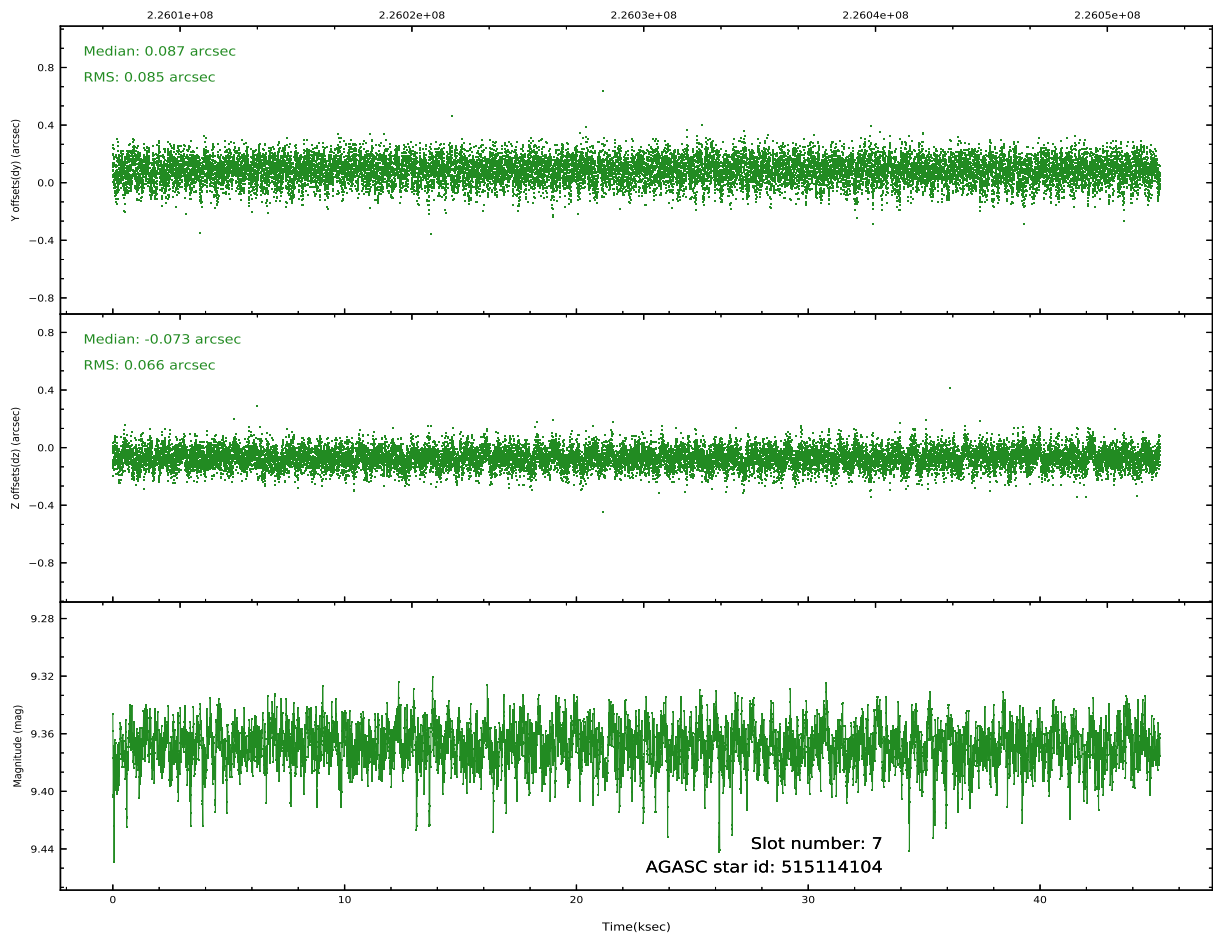
Time (s)



2.4.5 Slot 7

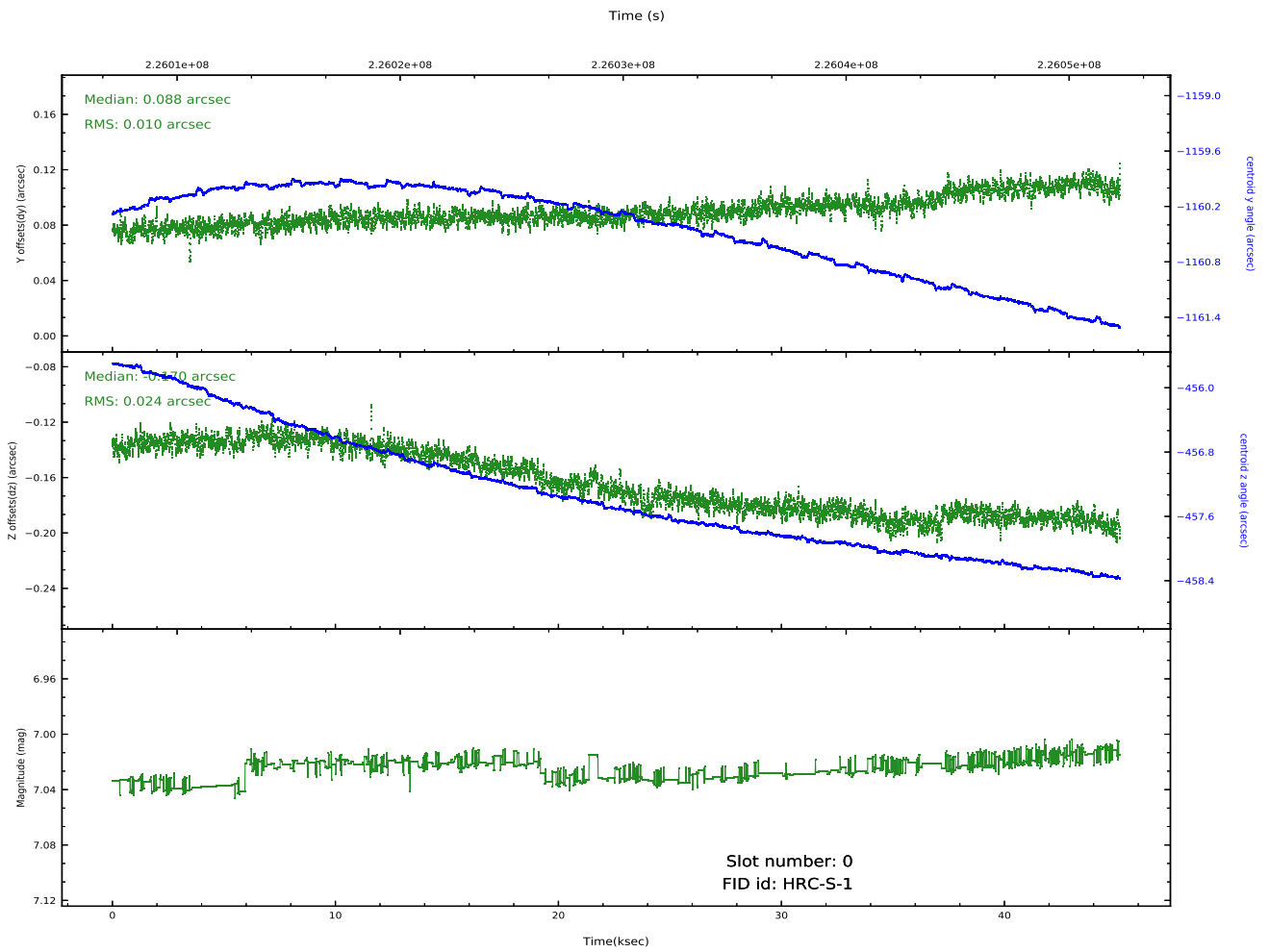
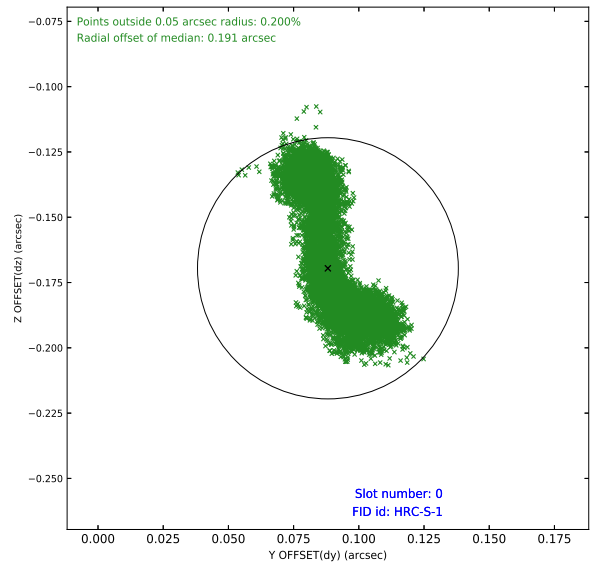
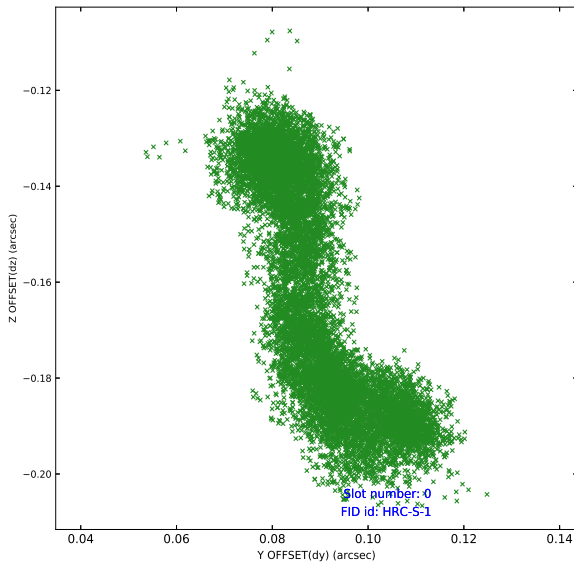


Time (s)

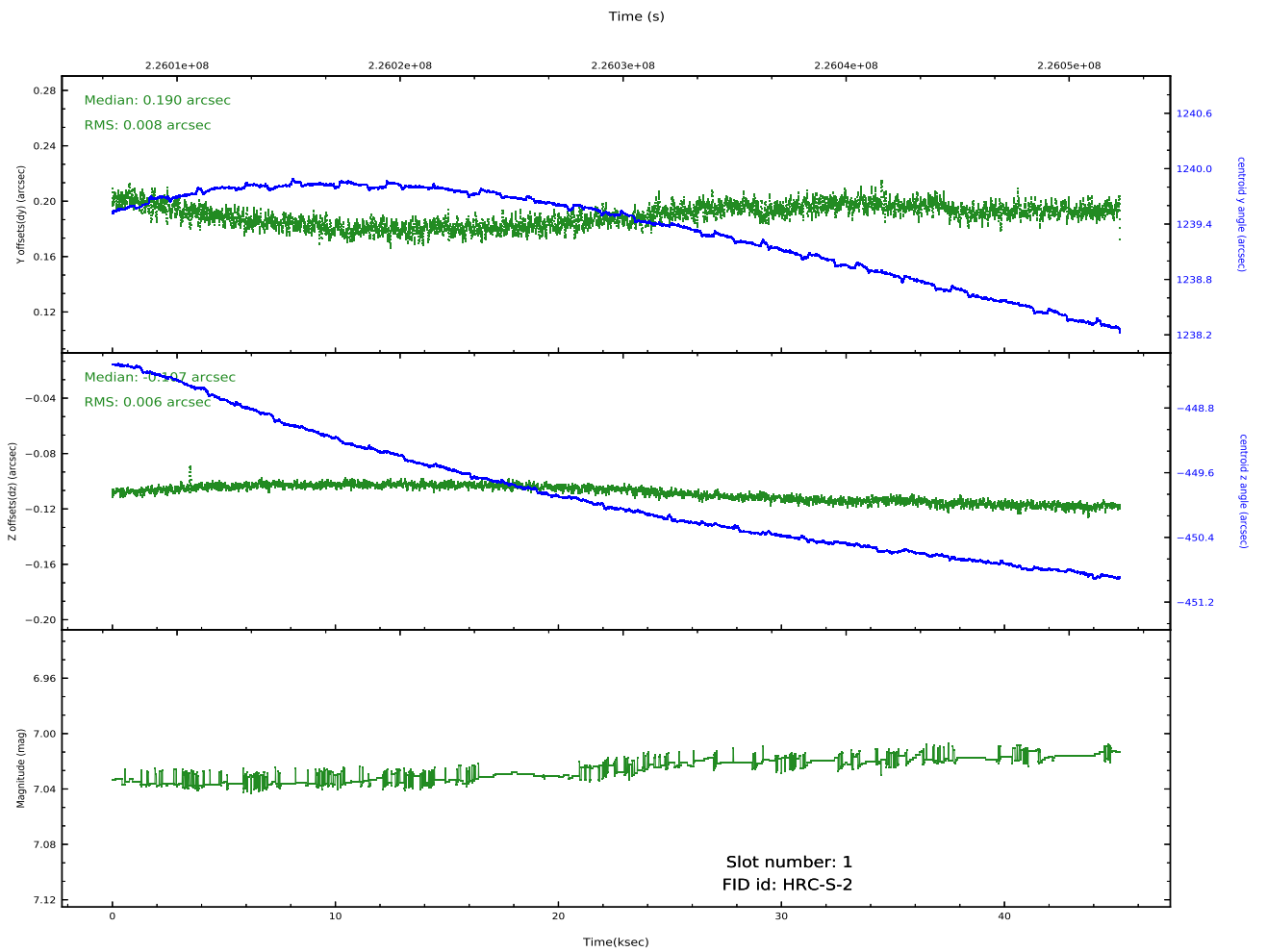
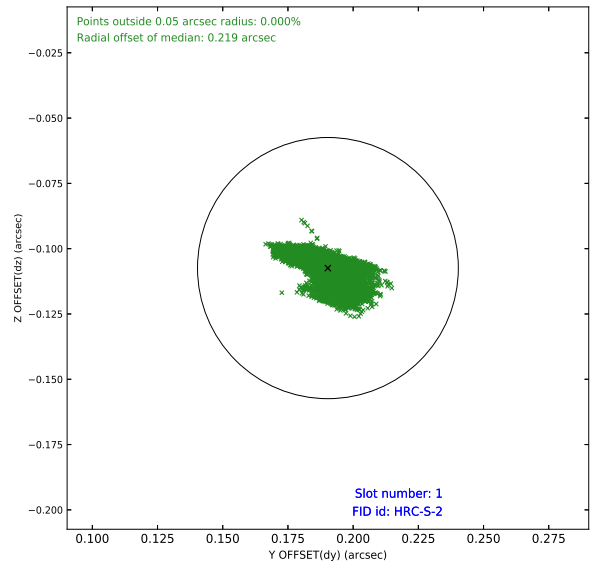
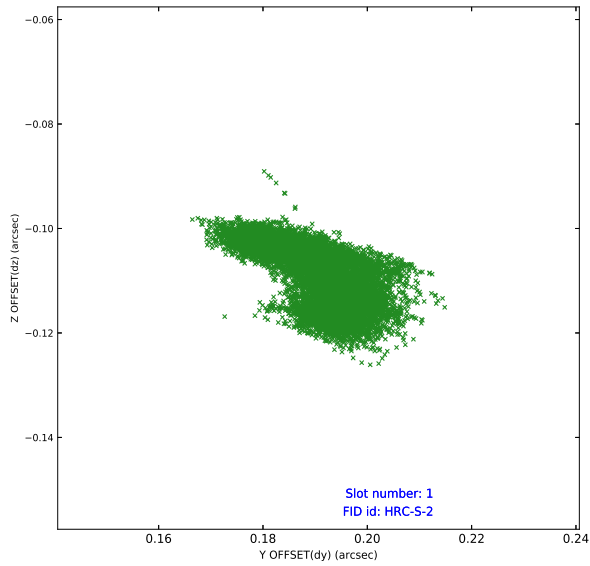


2.5 FID Slots

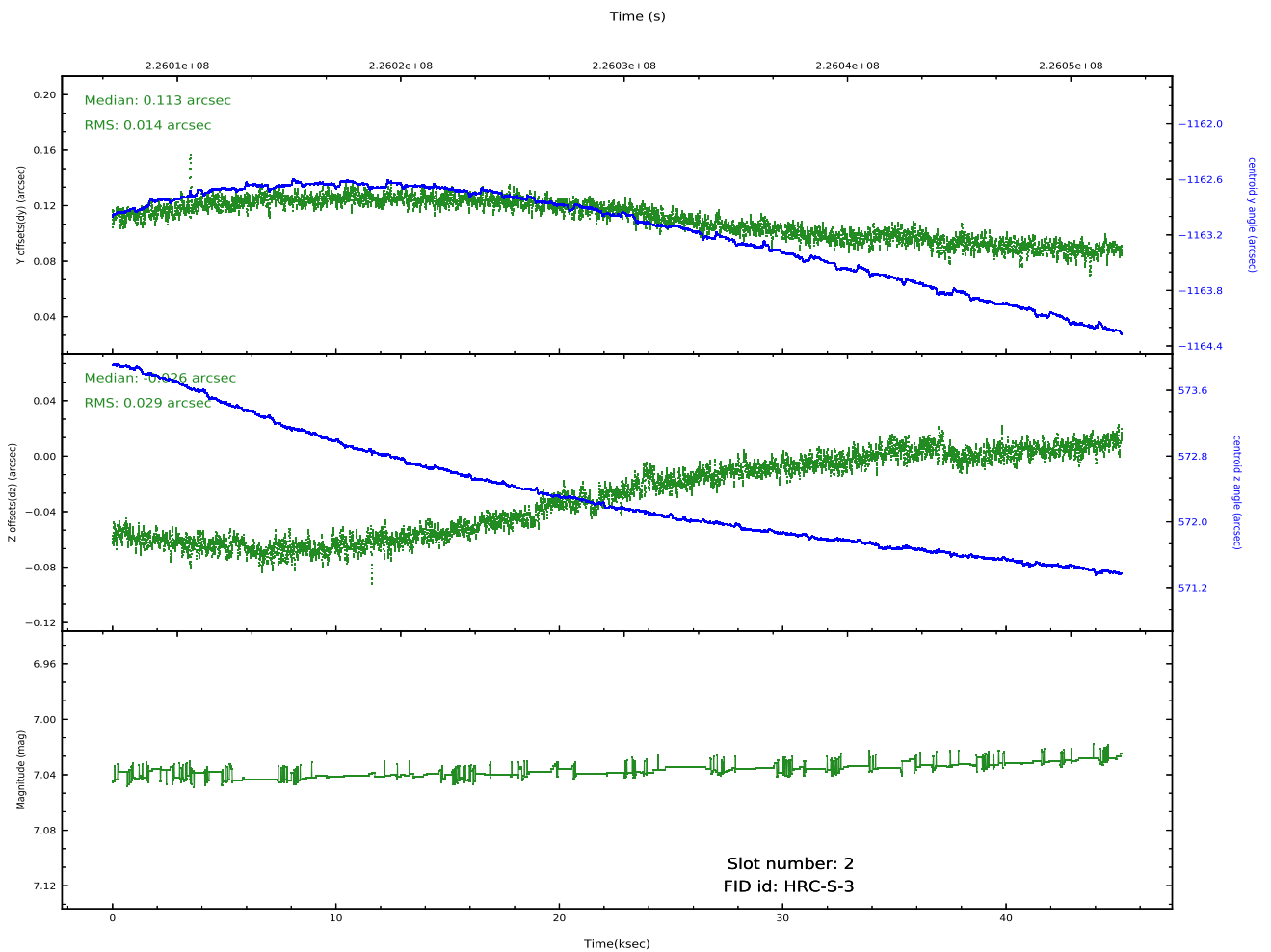
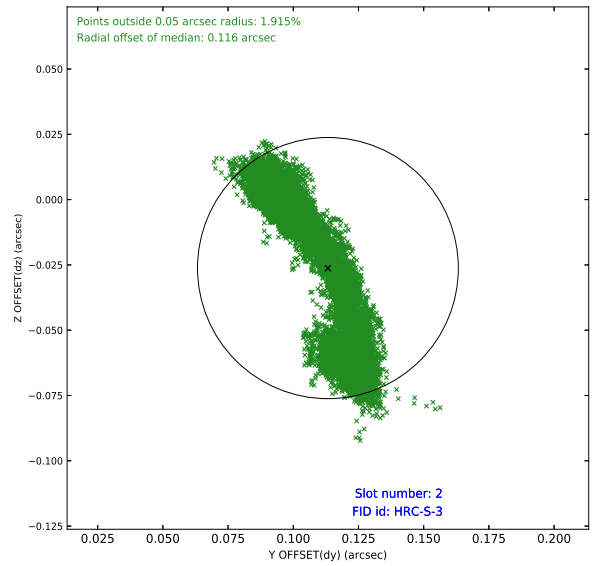
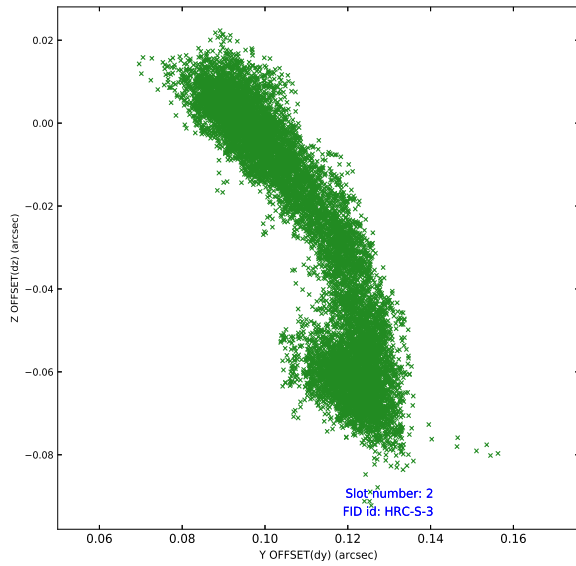
2.5.1 Slot 0



2.5.2 Slot 1



2.5.3 Slot 2



A Summary

A.1 Status

V&V Scientist	Beth Sundheim
V&V Date (YYYY-MM-DD)	2020.10.08
V&V Edition	1
V&V Disposition and Status	OK
V&V Charge Time	45.18123

A.2 Comments