

V&V Reference Report

L2 ASCDS Version : 8.4.3

Observation 6242 - L2 Version 4
Chandra X-Ray Center

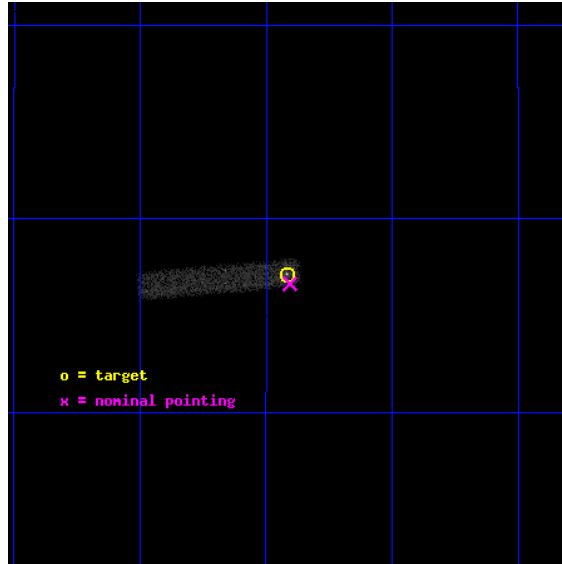
L2 Processing Date : Mar 23 2012

Contents

1	Front	2
2	OBI	3
2.1	OBI	3
2.1.1	Images	3
2.1.2	Bias	3
2.1.3	Parameters	4
2.1.4	Events	4
2.2	Compared Parameters	5
2.3	Aspect	6
2.4	Star Slots	9
2.4.1	Slot 3	9
2.4.2	Slot 4	10
2.4.3	Slot 5	11
2.4.4	Slot 6	12
2.4.5	Slot 7	13
2.5	FID Slots	14
2.5.1	Slot 0	14
2.5.2	Slot 1	15
2.5.3	Slot 2	16
A	Summary	17
A.1	Status	17
A.2	Comments	17

1 Front

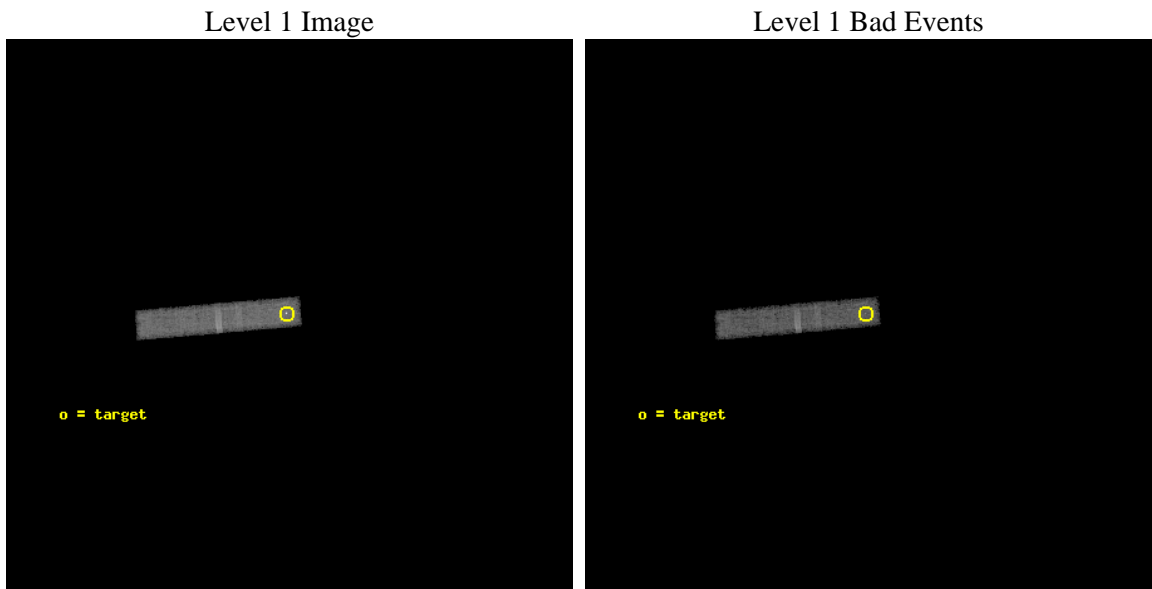
seq_num	500531	Sequence number
obs_id	6242	Observation id
title	The PWN Torus of PSR J0538+2817: a stringent test of kick models	P
observer	Prof. Roger Romani	Principal investigator
object	PSR J0538+2817	Source name
dtcycle	0	
cycle	P	events from which exps? Prim/Second/Both
ra_targ	84.604375	Observer's specified target RA [deg]
dec_targ	28.285778	Observer's specified target Dec [deg]
ra_nom	84.601522680338	Nominal RA [deg]
dec_nom	28.277501309147	Nominal Dec [deg]
roll_nom	265.21005243156	Nominal Roll [deg]
revision	4	Processing version of data
ontime	40675.876899898	Sum of GTIs [s]
livetime	37590.452554246	Livetime [s]
ontime3	40675.876899898	Sum of GTIs [s]
l2events	9327	Number of level 2 events



2 OBI

2.1 OBI

2.1.1 Images



2.1.2 Bias

Chip 3



2.1.3 Parameters

obi_num	0	Obi number	sched_exp_time	40500.000000	[s] Scheduled observation exposure time
ascdsver	8.4.3	Processing system revision	ontime	40675.876899898	Sum of GTIs [s]
caldbver	4.4.8	 	ontime3	40675.876899898	Sum of GTIs [s]
date	2012-03-23T14:55:58	Date and time of file creation	l1events	70647	Number of level 1 events
revision	4	Processing version of data			

2.1.4 Events

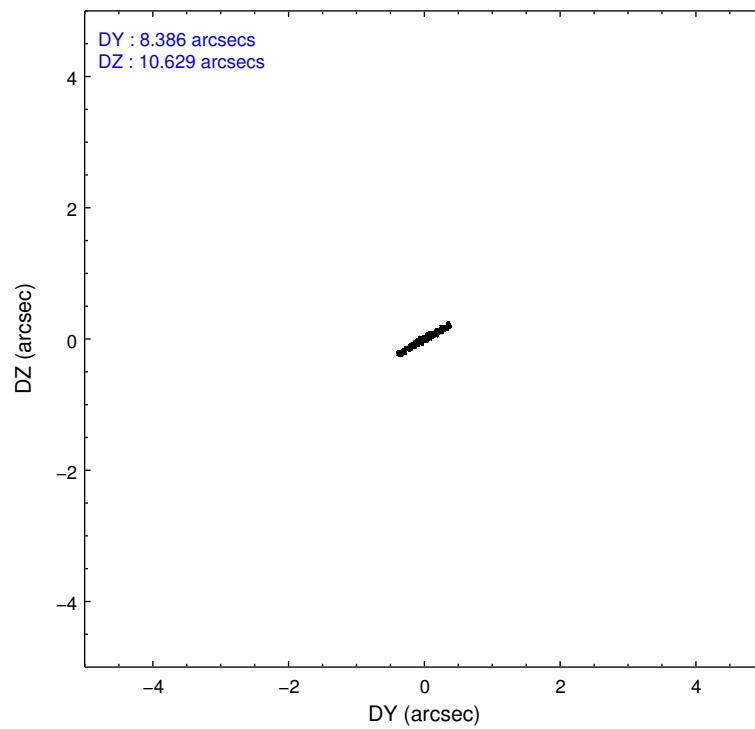
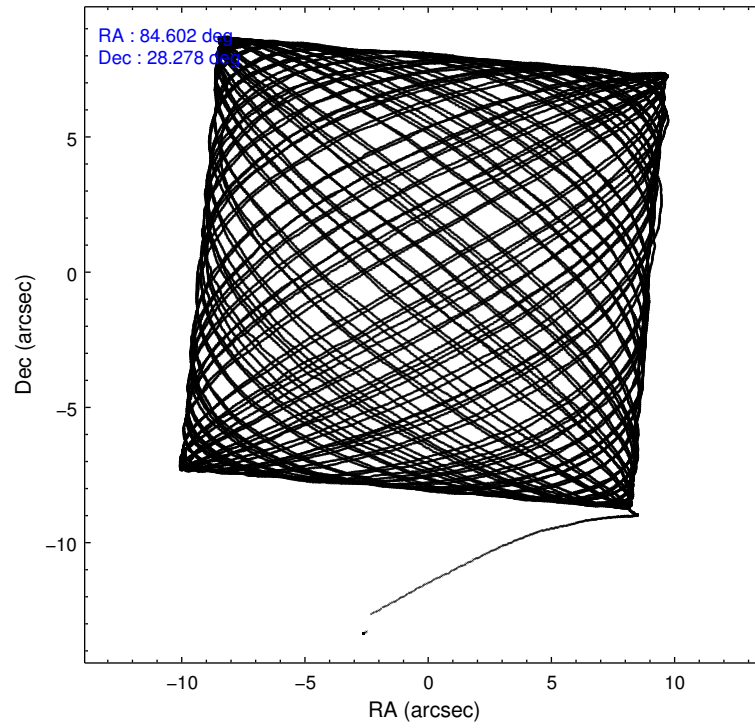
	ccd 3
level 1 events	70647
rejected events	59925
rejected %	84%

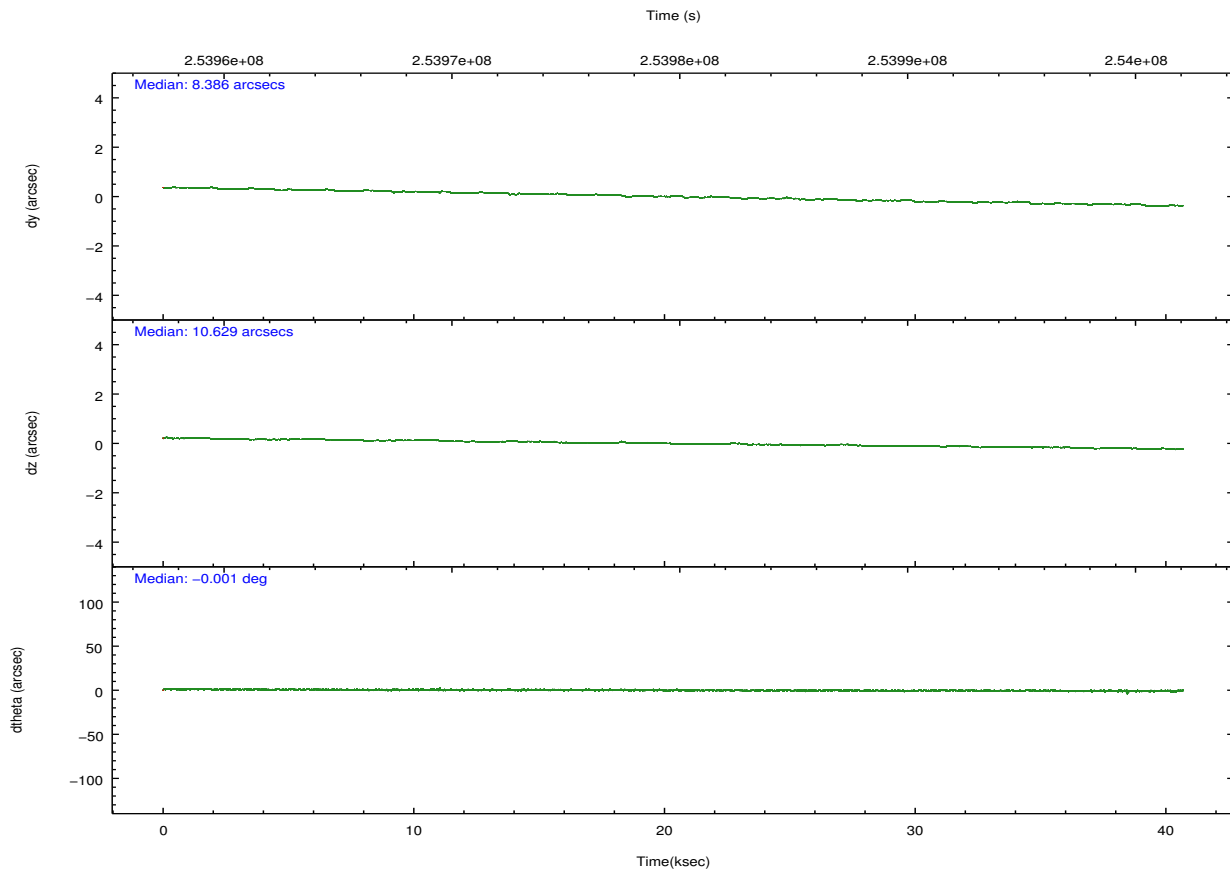
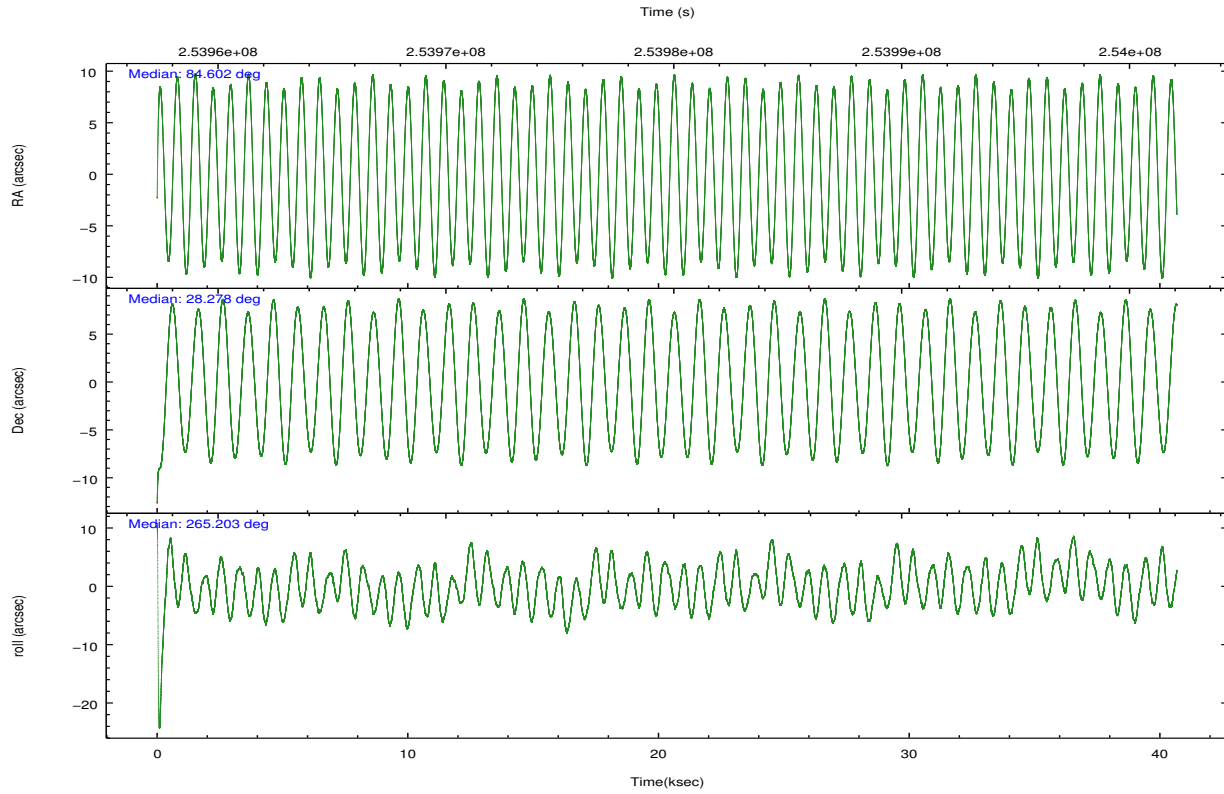
	ccd 3
grade 0 events	5977
	8%
grade 1 events	61
	0%
grade 2 events	1202
	1%
grade 3 events	1439
	2%
grade 4 events	1358
	1%
grade 5 events	1714
	2%
grade 6 events	944
	1%
grade 7 events	57952
	82%

2.2 Compared Parameters

Parameter	Planned	Actual	Parameter	Planned	Actual
Instrument	ACIS	ACIS	Obspar format version number	7	7
Detector	ACIS-3	ACIS-3	Obspar file type	PREDICTED	ACTUAL
Grating	NONE	NONE	Obspar update status	NONE	UPDATED
Data mode	VFAINT	VFAINT	Number of optional ACIS chips dropped	0	0
Observation mode	POINTING	POINTING	On-chip summing requested	N	N
[deg] Pointing RA	84.588143	84.60152268033779	Subarray requested	CUSTOM	CUSTOM
[deg] Pointing Dec	28.302253	28.27750130914716	Subarray start row	865	865
[deg] Pointing Roll	265.007701	265.2100524315576	Subarray row count	160	160
[mm] SIM focus pos	-0.782348	-0.7809083437167272	Alternating exposures requested	N	N
[mm] SIM defocus	0	0.001439871863259334	[s] Primary exposure time	0.000000	0.5
[mm] SIM translation stage pos	-233.592463	-233.5874344608287			
[mm] SIM translation stage offset	0	-0.005018542100998502			
[s] Observation start time (MET)	253959542.184000	253958011.66033			
Observation start date	2006-01-18T08:17:57	2006-01-18T07:53:31			
[s] Observation end time (MET)	254000042.184000	254001016.04983			
Observation end date	2006-01-18T19:32:57	2006-01-18T19:50:16			
Read mode	TIMED	TIMED			

2.3 Aspect



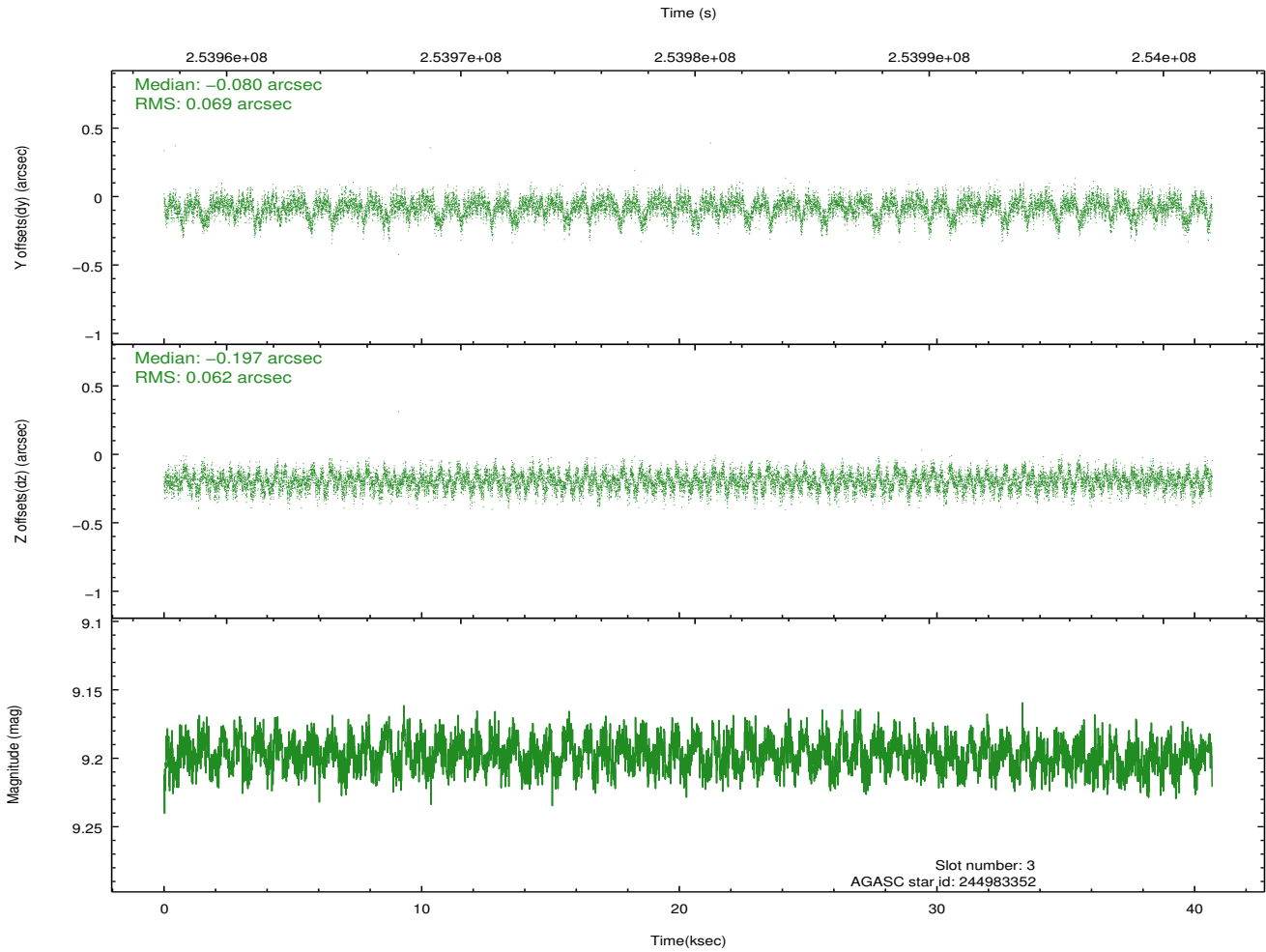
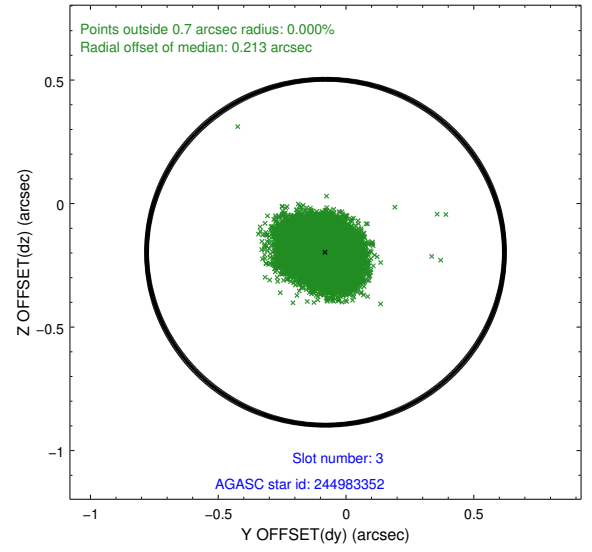
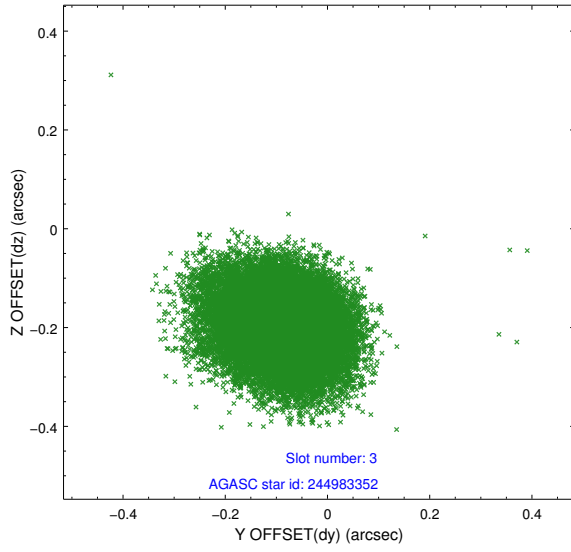


Slot Statistics

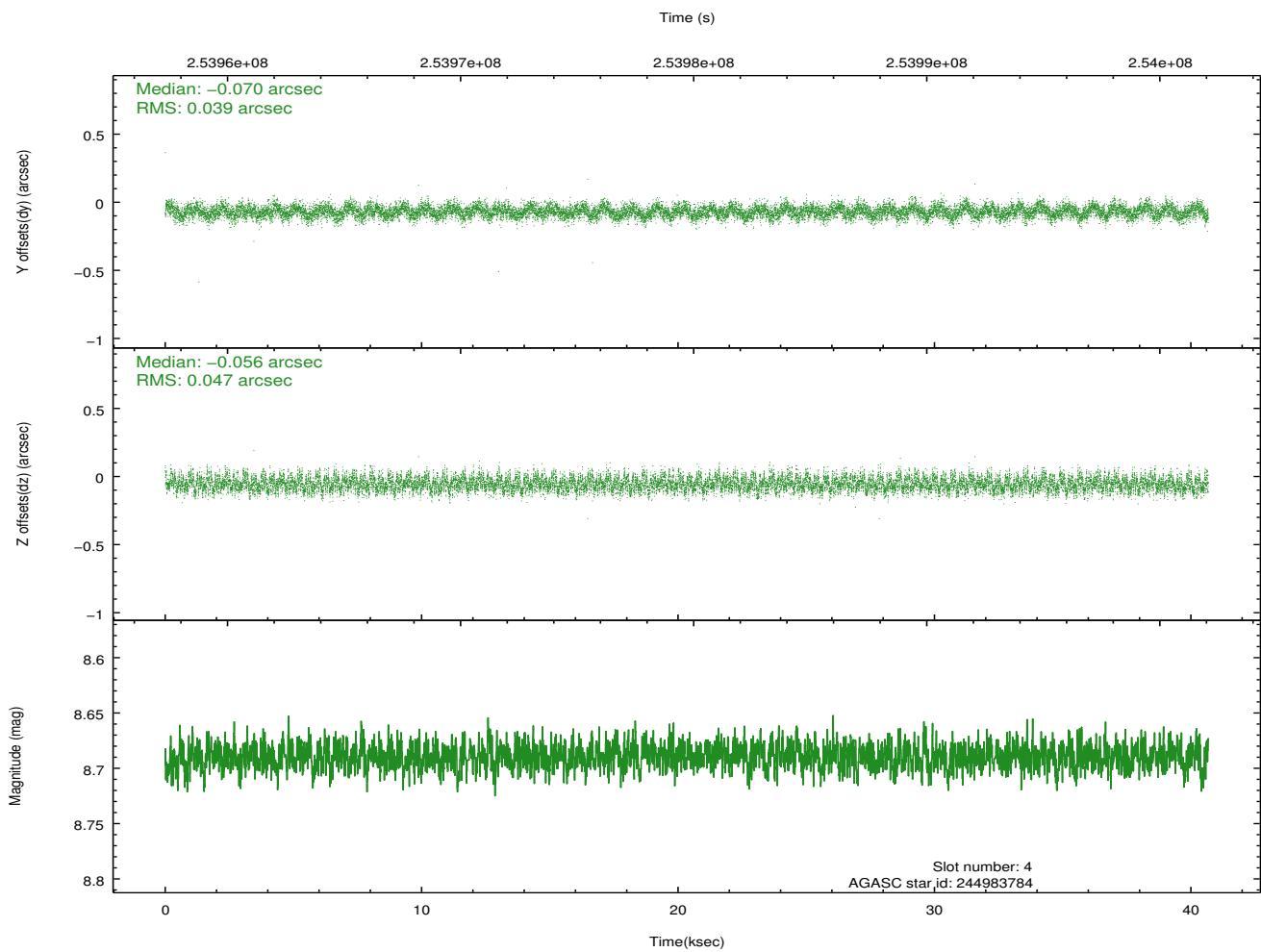
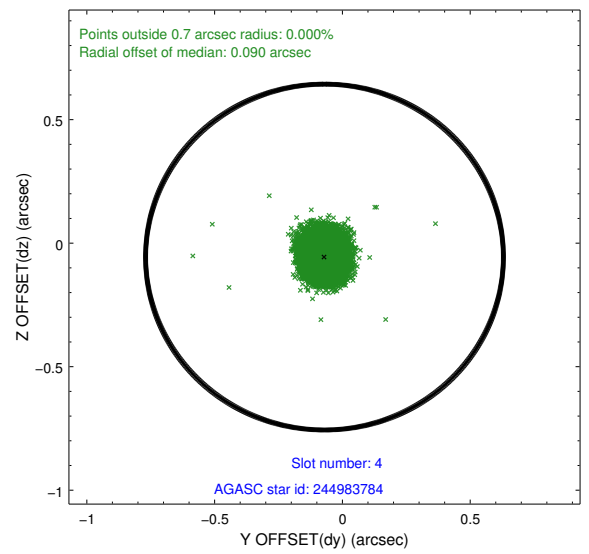
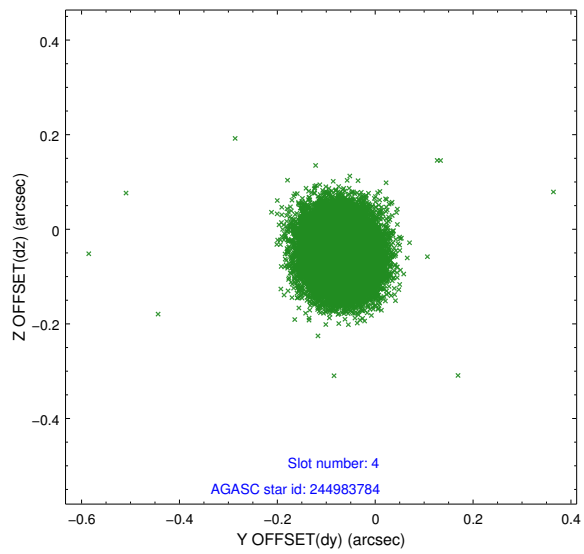
slot	status	id	mag	n_pts	med_dy	med_dz	dr1	dr2	ra	dec	mean_y	mean_z
0	FID	ACIS-I-1	7.24	9922	0.040	-0.023	0.012	0.020	0.000000	0.000000	931.29	-834.14
1	FID	ACIS-I-5	7.23	9921	-0.194	0.047	0.012	0.020	0.000000	0.000000	-1817.03	1063.43
2	FID	ACIS-I-6	7.25	9922	0.063	0.047	0.008	0.013	0.000000	0.000000	396.87	1707.93
3	GUIDE	244983352	9.20	19829	-0.080	-0.197	0.099	0.159	84.664646	28.064076	833.25	316.63
4	GUIDE	244983784	8.69	19834	-0.070	-0.056	0.065	0.104	84.780149	28.001156	1026.44	702.30
5	GUIDE	244985464	9.30	19825	0.008	0.118	0.101	0.166	84.934985	27.780885	1772.39	1264.12
6	GUIDE	244987640	8.57	19839	0.001	-0.038	0.072	0.119	84.165830	27.911751	1515.61	-1216.13
7	GUIDE	244986520	9.35	19835	0.144	0.175	0.098	0.159	85.259892	27.682776	2029.74	2327.31

2.4 Star Slots

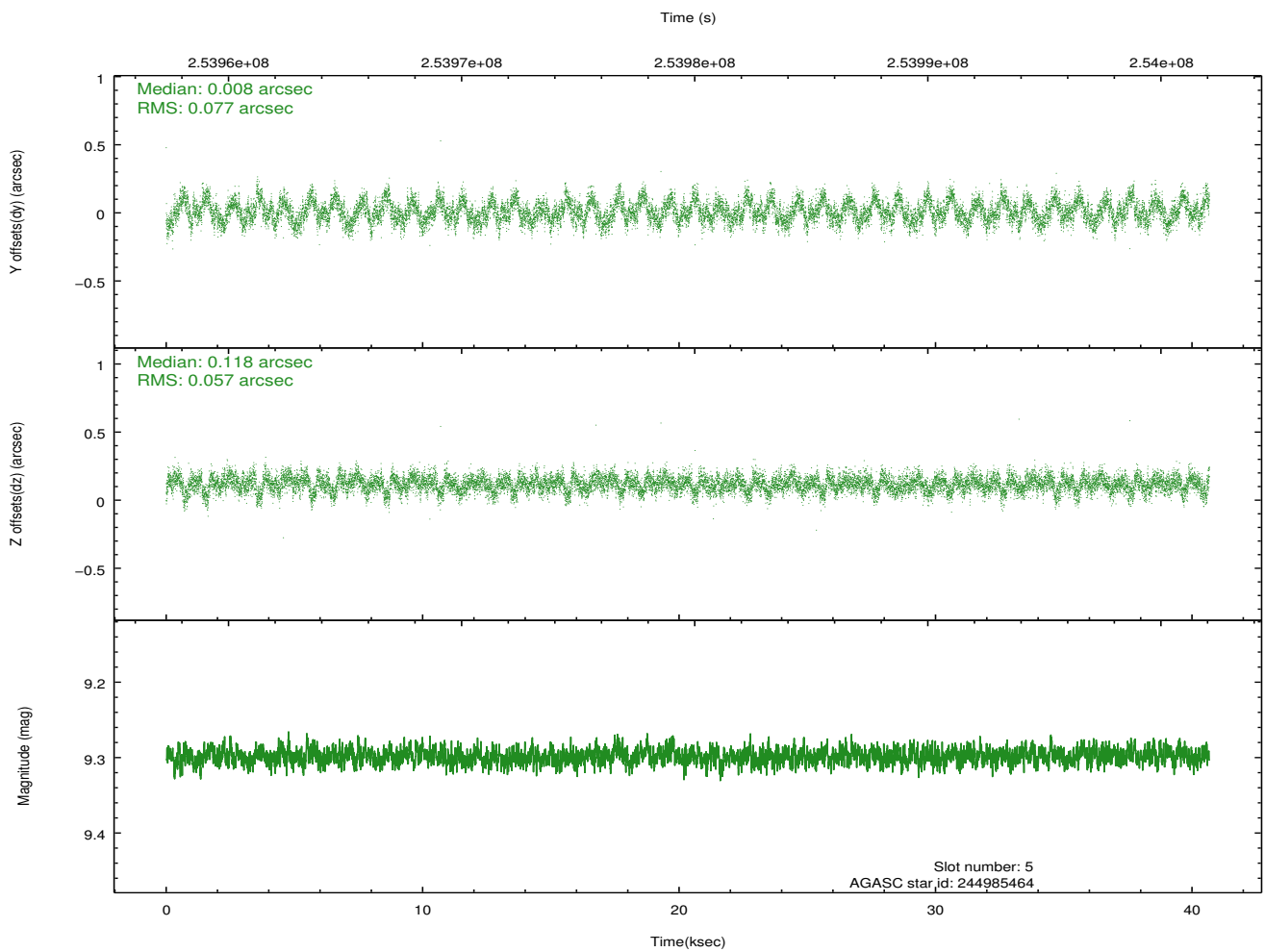
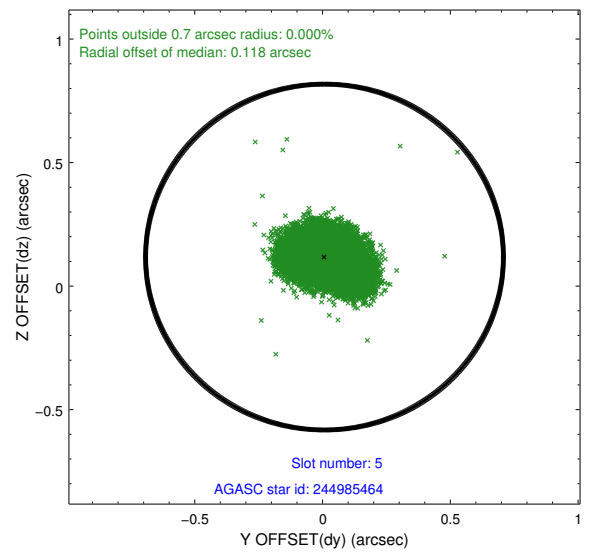
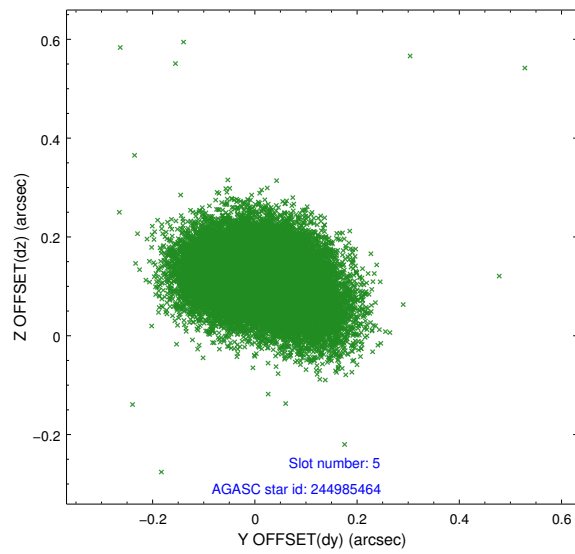
2.4.1 Slot 3



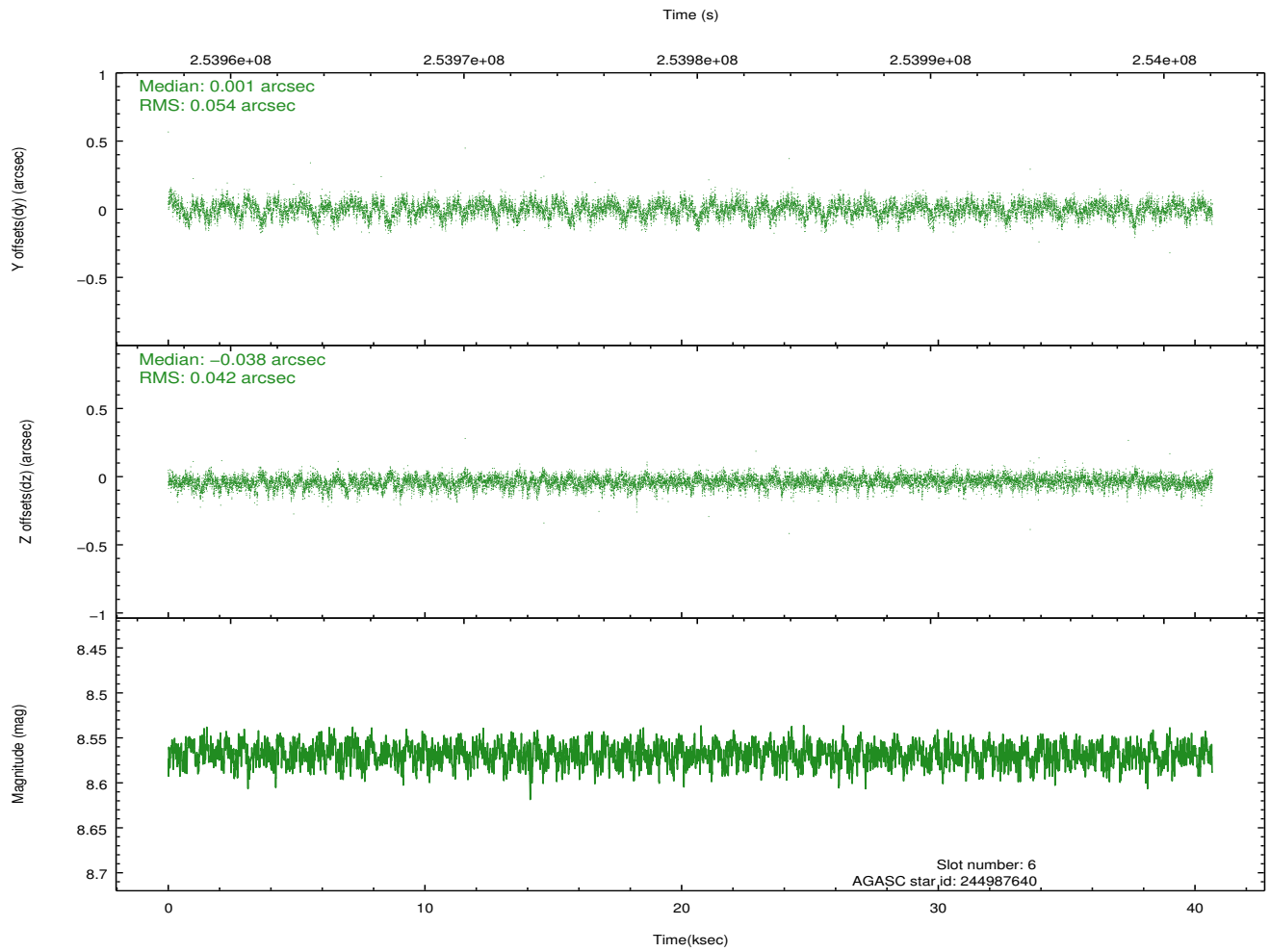
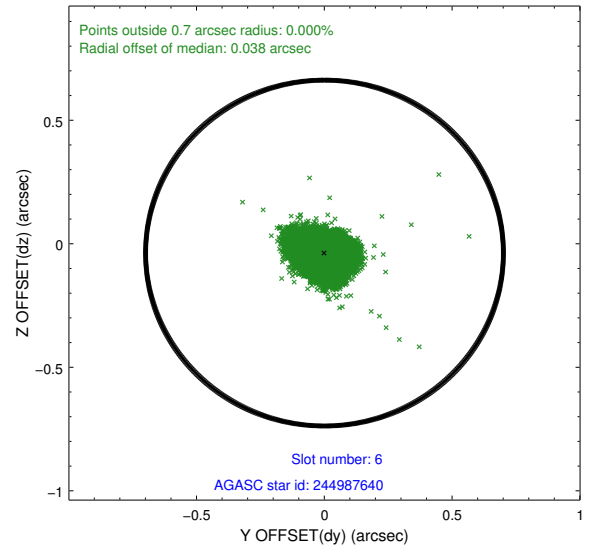
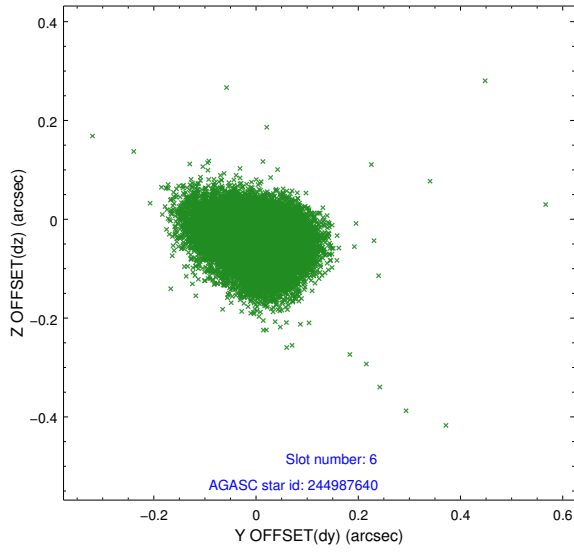
2.4.2 Slot 4



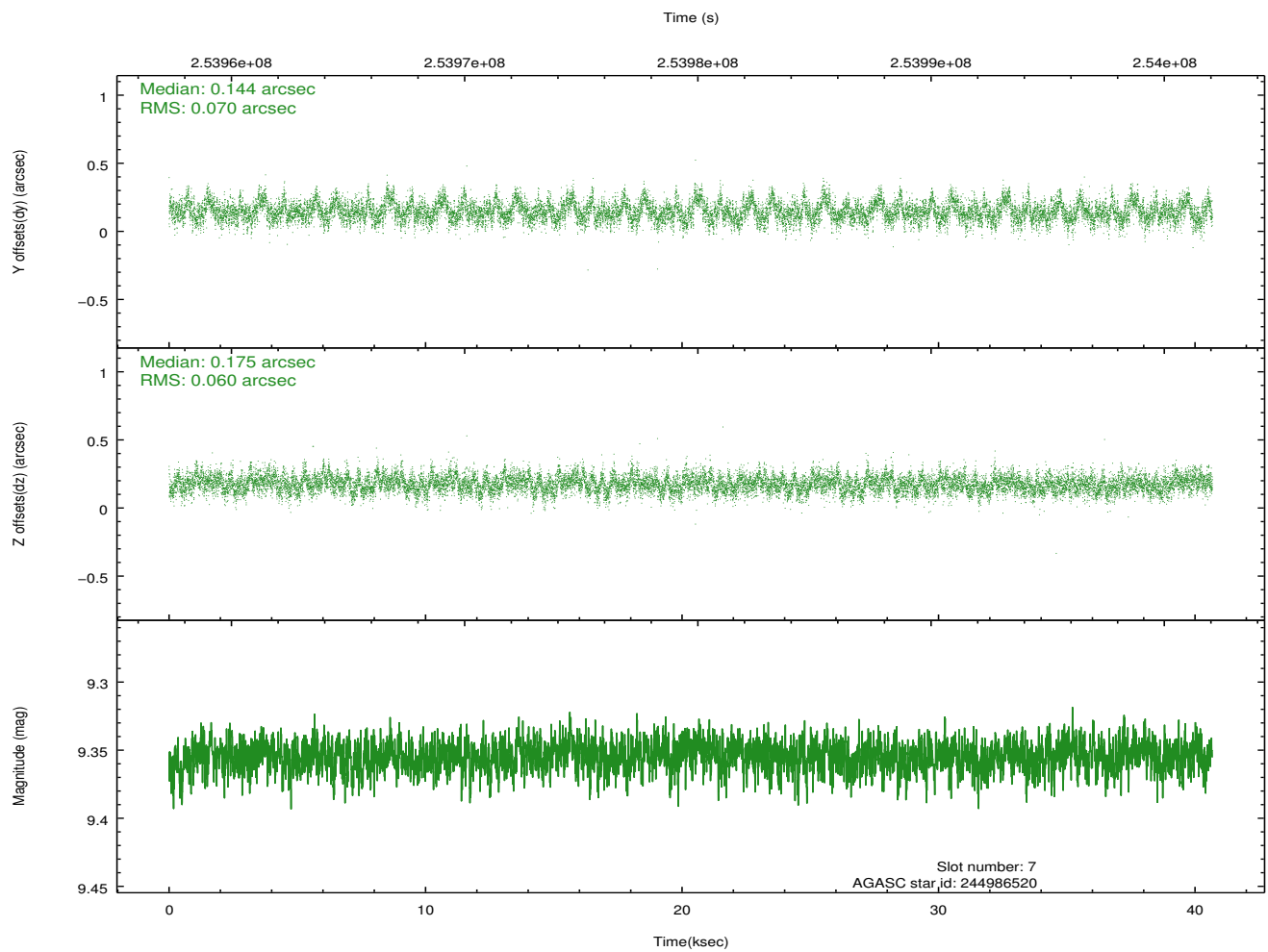
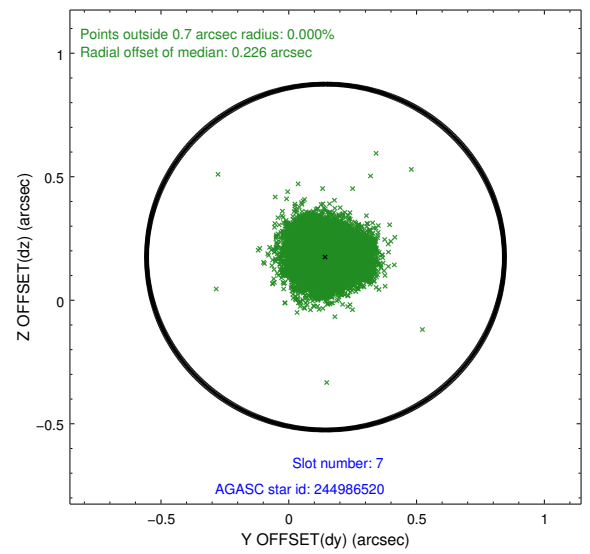
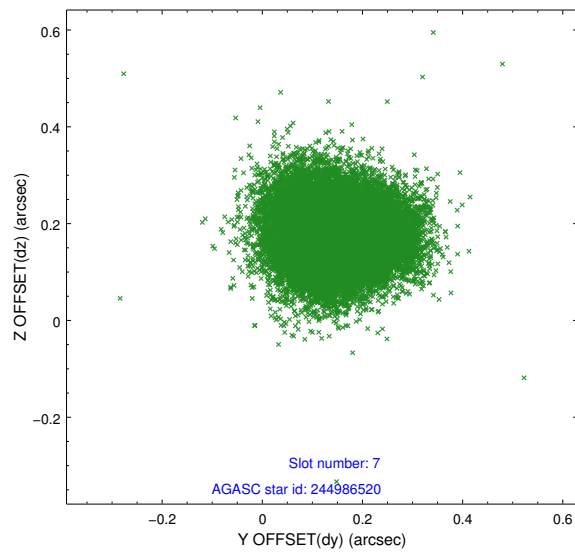
2.4.3 Slot 5



2.4.4 Slot 6

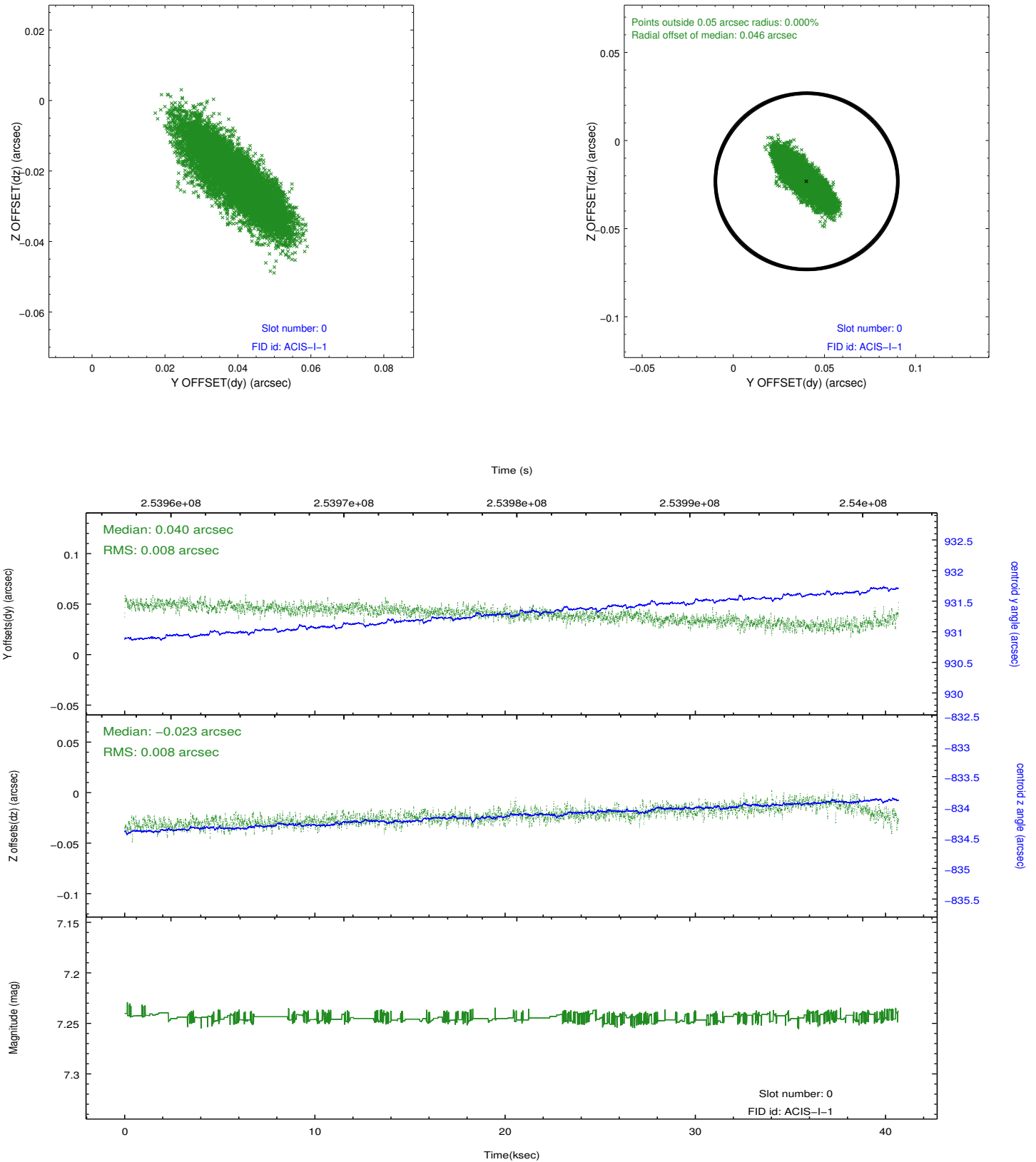


2.4.5 Slot 7

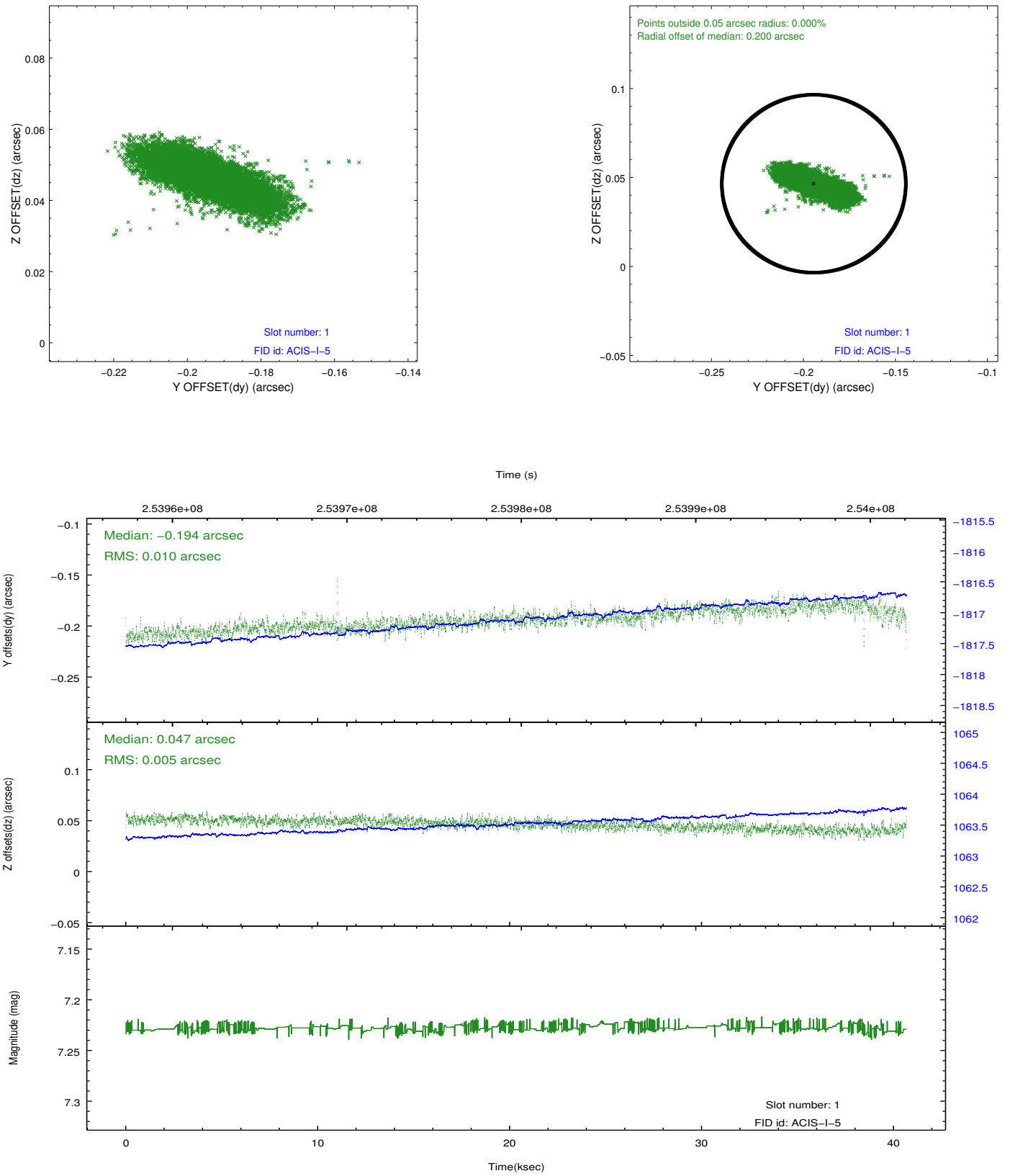


2.5 FID Slots

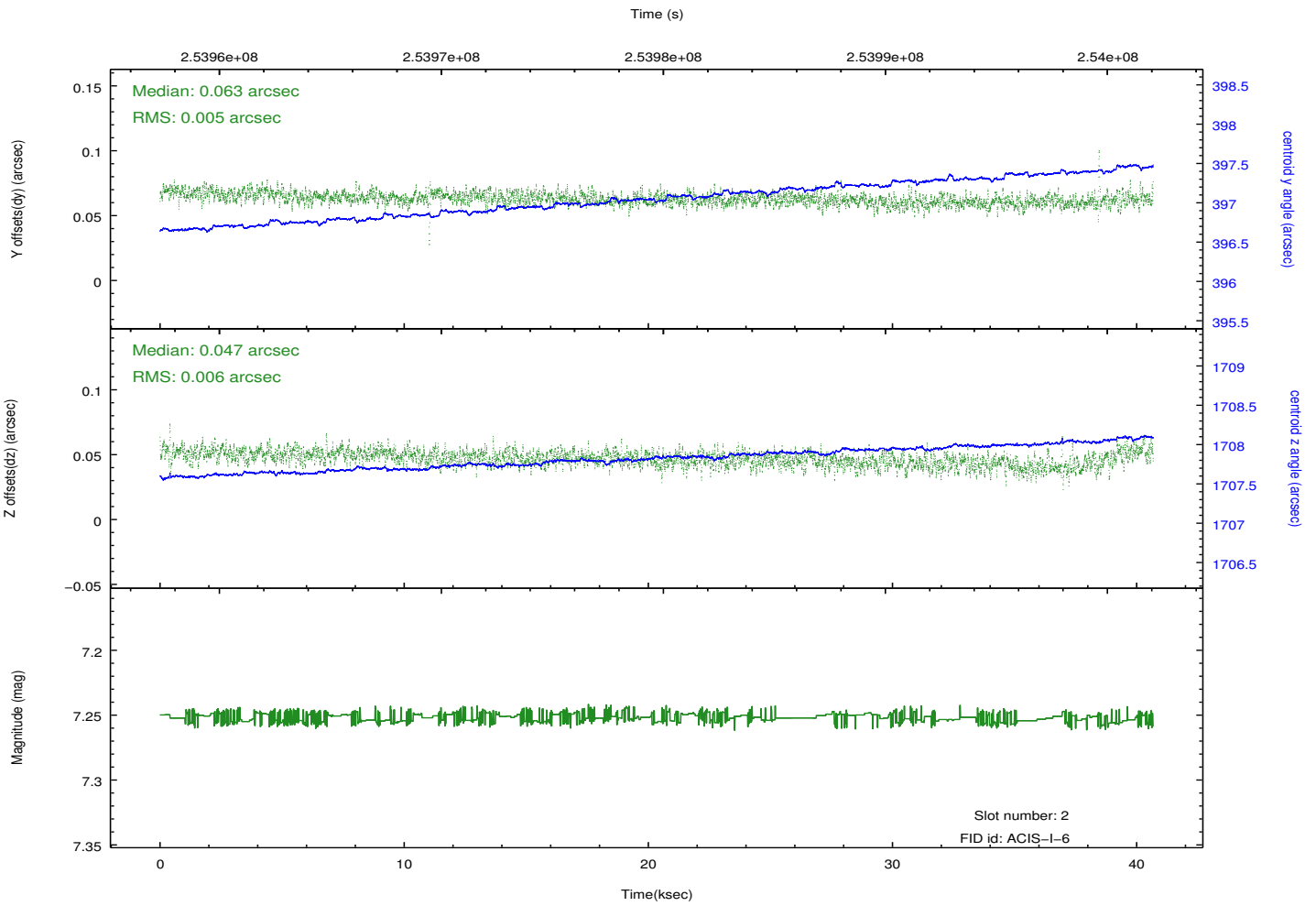
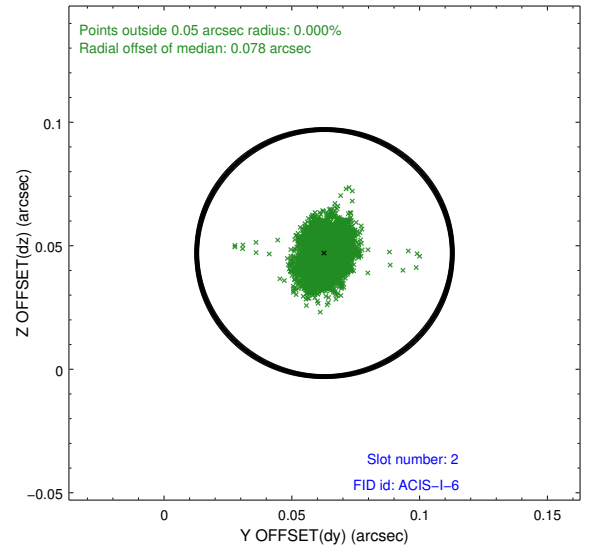
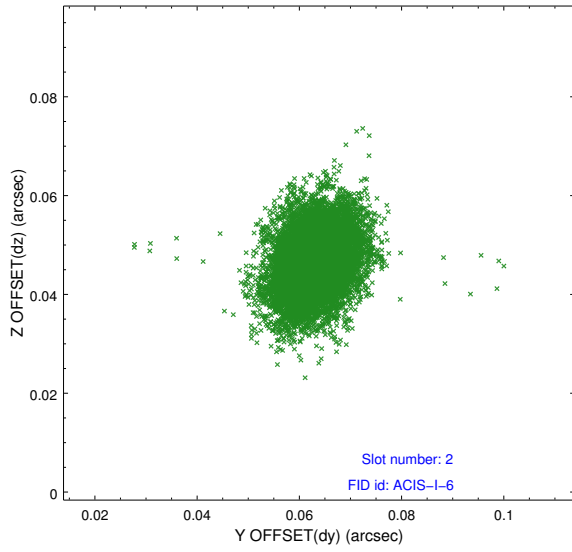
2.5.1 Slot 0



2.5.2 Slot 1



2.5.3 Slot 2



A Summary

A.1 Status

V&V Scientist	Jen Lauer
V&V Date (YYYY-MM-DD)	2012.03.23
V&V Edition	1
V&V Disposition and Status	OK
V&V Charge Time	40.6758768

A.2 Comments