

V&V Reference Report

L2 ASCDS Version : 8.5.1.1

Observation 6312 - L2 Version 3
Chandra X-Ray Center

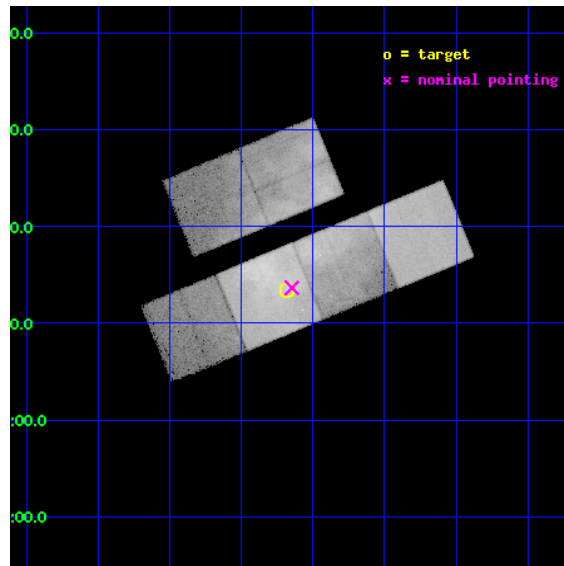
L2 Processing Date : Dec 25 2012

Contents

1	Front	2
2	OBI	3
2.1	OBI	3
2.1.1	Images	3
2.1.2	Bias	3
2.1.3	Parameters	4
2.1.4	Events	4
2.2	Compared Parameters	5
2.3	Aspect	6
2.4	Star Slots	9
2.4.1	Slot 3	9
2.4.2	Slot 4	10
2.4.3	Slot 5	11
2.4.4	Slot 6	12
2.4.5	Slot 7	13
2.5	FID Slots	14
2.5.1	Slot 0	14
2.5.2	Slot 1	15
2.5.3	Slot 2	16
A	Summary	17
A.1	Status	17
A.2	Comments	17

1 Front

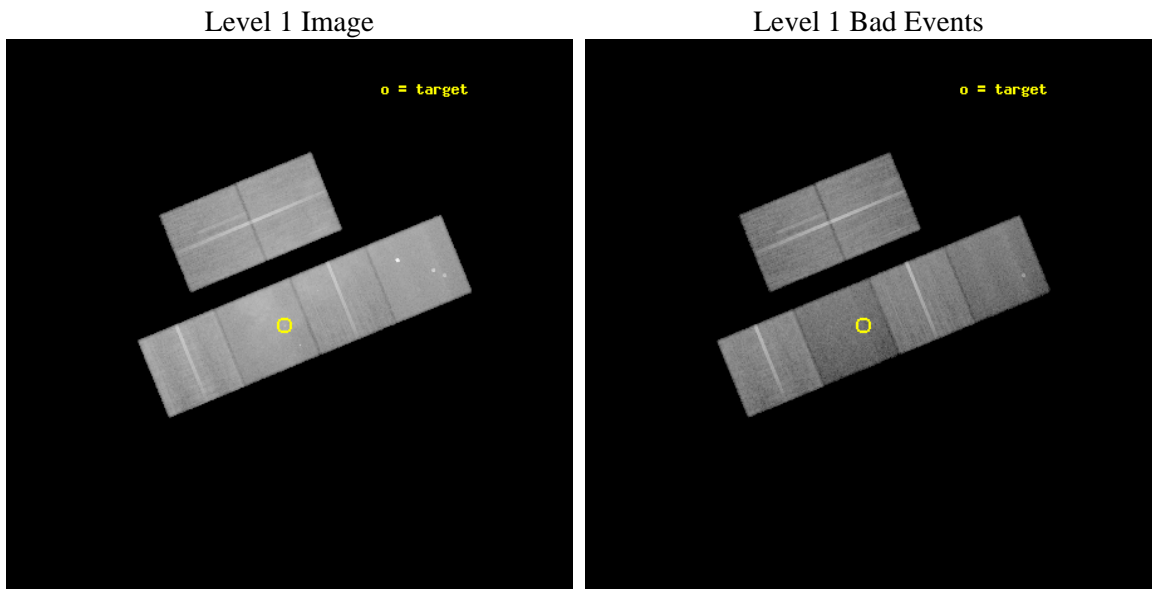
seq_num	500537	Sequence number
obs_id	6312	Observation id
title	The Structure and Spectrum of W44 s Pulsar Wind Nebula	Proposal ti
observer	Dr. Robert Petre	Principal investigator
object	W44 PWN	Source name
dtycycle	0	
cycle	P	events from which exps? Prim/Second/Both
ra_targ	284.045	Observer's specified target RA [deg]
dec_targ	1.2225	Observer's specified target Dec [deg]
ra_nom	284.03681762807	Nominal RA [deg]
dec_nom	1.2276827940583	Nominal Dec [deg]
roll_nom	157.65680200085	Nominal Roll [deg]
revision	3	Processing version of data
ontime	40089.599850655	Sum of GTIs [s]
livetime	39581.961198287	Livetime [s]
ontime2	40089.599850655	Sum of GTIs [s]
ontime3	40079.876879901	Sum of GTIs [s]
ontime5	40089.599850655	Sum of GTIs [s]
ontime6	40089.599850655	Sum of GTIs [s]
ontime7	40089.599850655	Sum of GTIs [s]
ontime8	40089.599850655	Sum of GTIs [s]
l2events	612620	Number of level 2 events



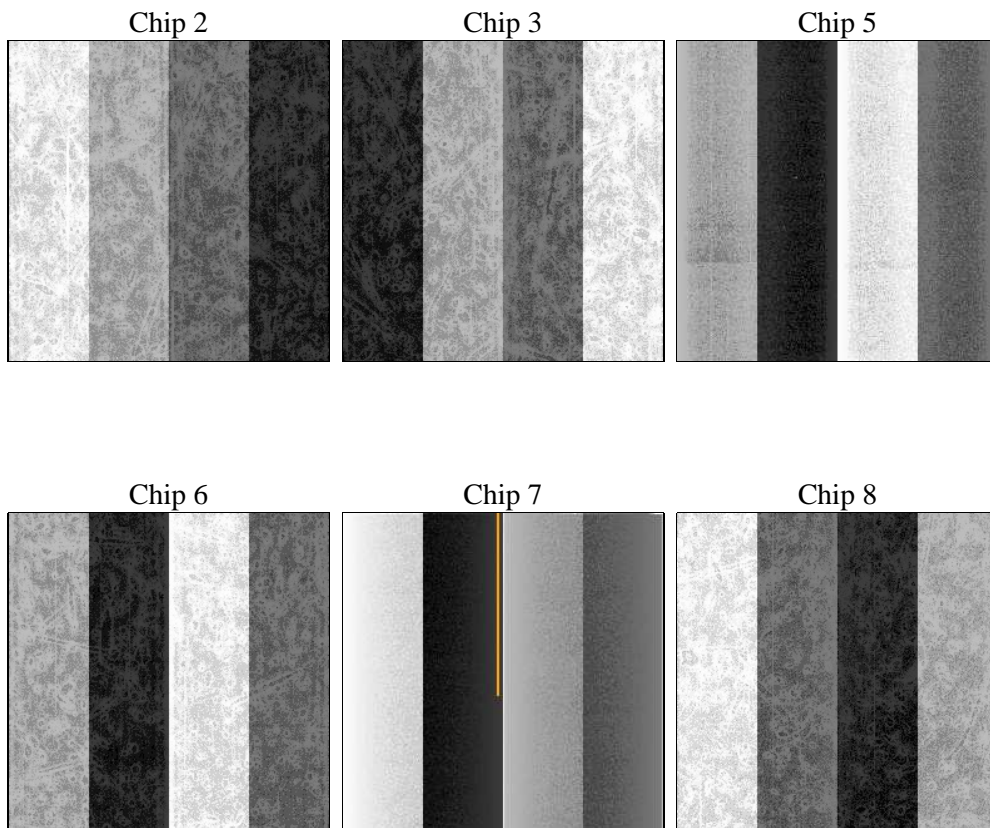
2 OBI

2.1 OBI

2.1.1 Images



2.1.2 Bias



2.1.3 Parameters

obi_num	0	Obi number	sched_exp_time	40000.000000	[s] Scheduled observation exposure time
ascdsver	8.5.1.1	Processing system revision	ontime	40089.599850655	Sum of GTIs [s]
caldsver	4.5.5	 	ontime2	40089.599850655	Sum of GTIs [s]
date	2012-12-25T07:54:54	Date and time of file creation	ontime3	40079.876879901	Sum of GTIs [s]
revision	3	Processing version of data	ontime5	40089.599850655	Sum of GTIs [s]
			ontime6	40089.599850655	Sum of GTIs [s]
			ontime7	40089.599850655	Sum of GTIs [s]
			ontime8	40089.599850655	Sum of GTIs [s]
			l1events	1870003	Number of level 1 events

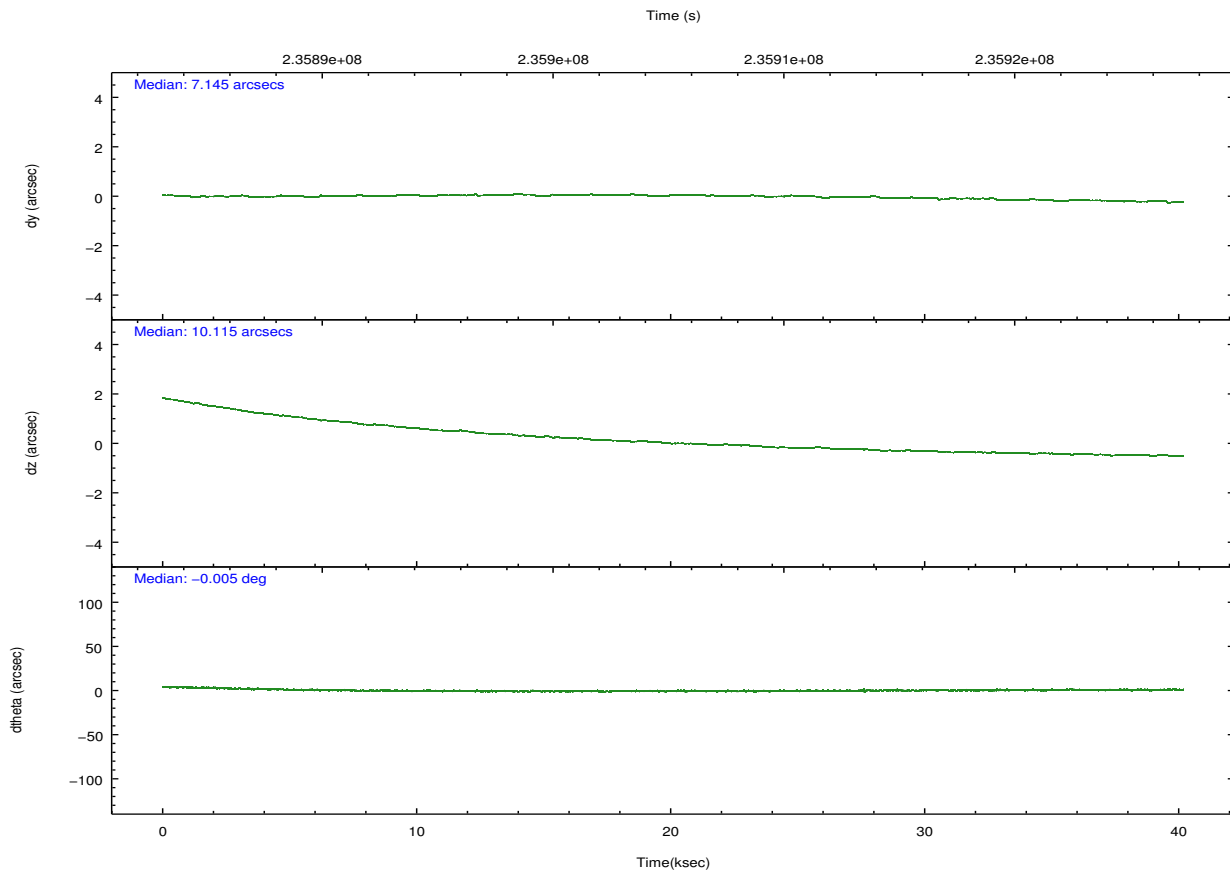
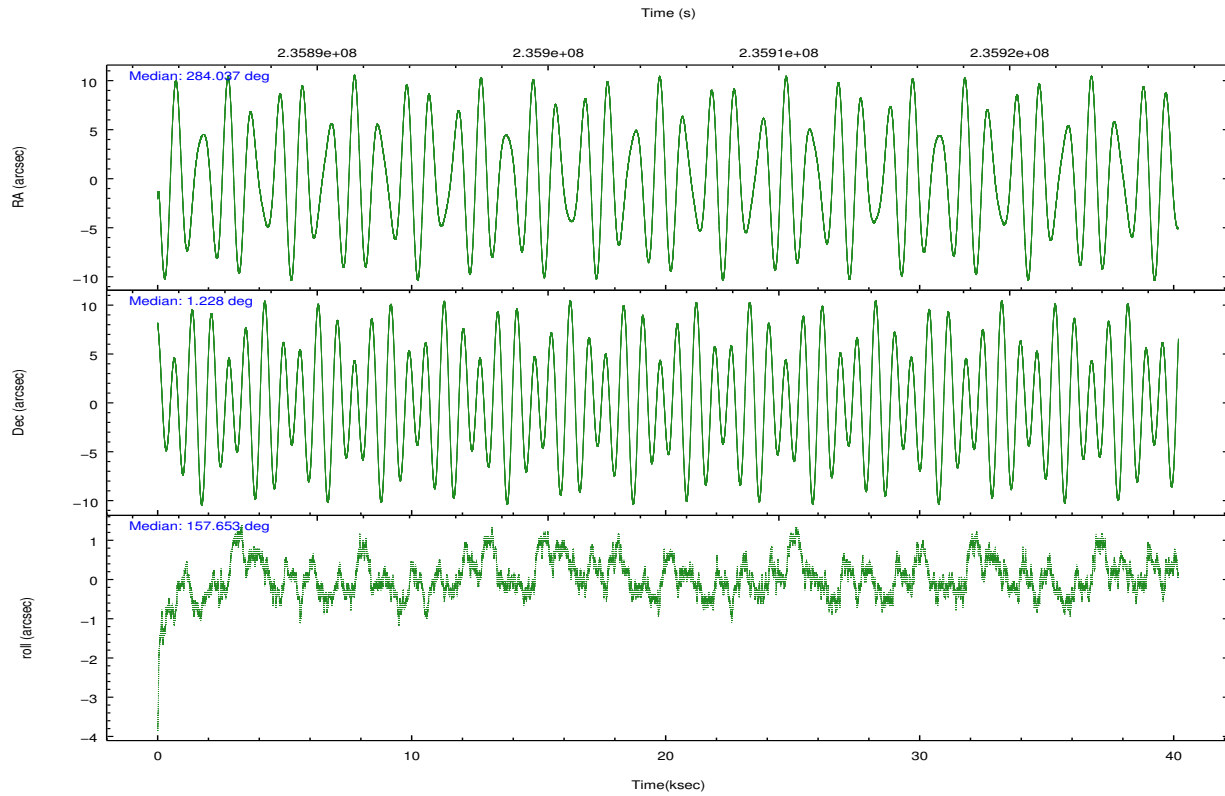
2.1.4 Events

	ccd 2	ccd 3	ccd 5	ccd 6	ccd 7	ccd 8		ccd 2	ccd 3	ccd 5	ccd 6	ccd 7	ccd 8
level 1 events	336143	254347	310852	330511	334272	303878	grade 0 events	72872	20287	25809	77909	39021	22025
rejected events	235265	217119	144329	222912	122205	229792		21%	7%	8%	23%	11%	7%
rejected %	69%	85%	46%	67%	36%	75%	grade 1 events	418	187	238	420	251	217
								0%	0%	0%	0%	0%	0%
							grade 2 events	13048	6312	45768	13515	49273	17015
								3%	2%	14%	4%	14%	5%
							grade 3 events	4835	3085	6836	4960	22360	7957
								1%	1%	2%	1%	6%	2%
							grade 4 events	4828	3063	6472	4889	22270	7408
								1%	1%	2%	1%	6%	2%
							grade 5 events	7381	8388	25173	8845	26252	12782
								2%	3%	8%	2%	7%	4%
							grade 6 events	5303	4488	81653	6331	79161	19684
								1%	1%	26%	1%	23%	6%
							grade 7 events	227458	208537	118903	213642	95684	216790
								67%	81%	38%	64%	28%	71%

2.2 Compared Parameters

Parameter	Planned	Actual	Parameter	Planned	Actual
Instrument	ACIS	ACIS	Obspar format version number	7	7
Detector	ACIS-235678	ACIS-235678	Obspar file type	PREDICTED	ACTUAL
Grating	NONE	NONE	Obspar update status	NONE	UPDATED
Data mode	VFAINT	VFAINT	Number of optional ACIS chips dropped	0	0
Observation mode	POINTING	POINTING	On-chip summing requested	N	N
[deg] Pointing RA	284.063776	284.0368176280716	Subarray requested	NONE	NONE
[deg] Pointing Dec	1.231681	1.227682794058263	Alternating exposures requested	N	N
[deg] Pointing Roll	157.499600	157.6568020008508	[s] Primary exposure time	0.000000	3.2
[mm] SIM focus pos	-0.684267	-0.6828225247311905			
[mm] SIM defocus	0	0.001444936568705701			
[mm] SIM translation stage pos	-190.132523	-190.1400660498719			
[mm] SIM translation stage offset	0	0.00754346686406393			
[s] Observation start time (MET)	235885292.184000	235884263.72843			
Observation start date	2005-06-23T03:40:28	2005-06-23T03:24:23			
[s] Observation end time (MET)	235925292.184000	235925903.84284			
Observation end date	2005-06-23T14:47:08	2005-06-23T14:58:23			
Read mode	TIMED	TIMED			

2.3 Aspect

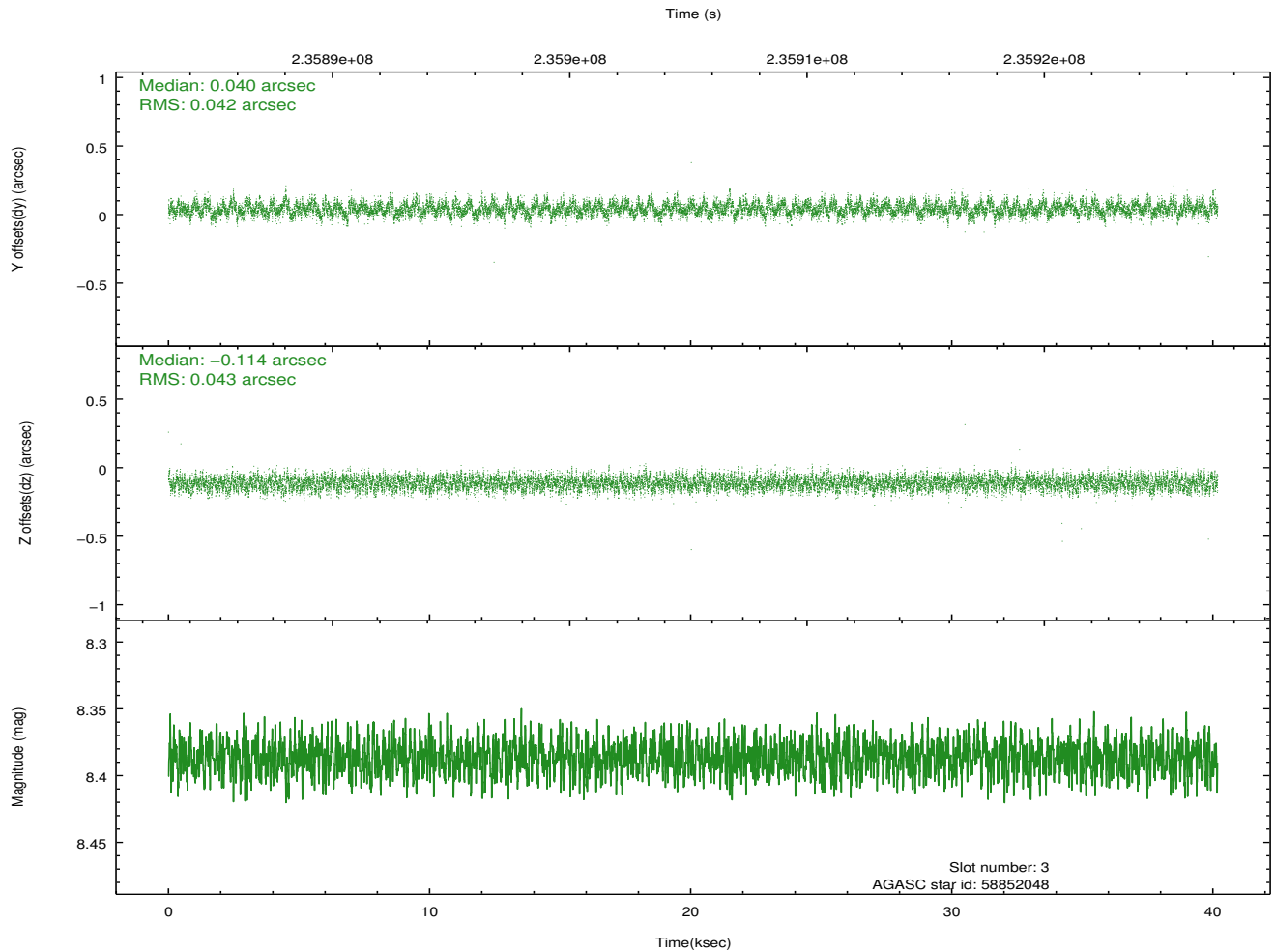
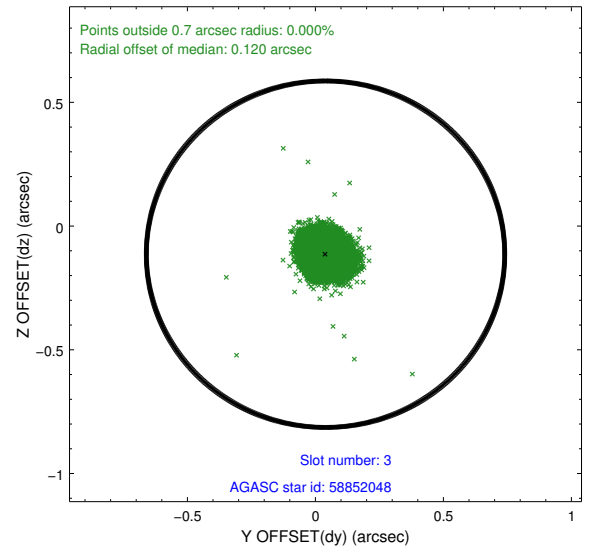
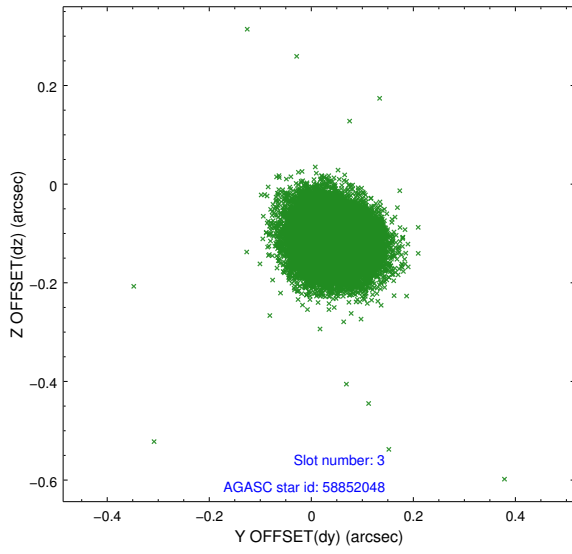


Slot Statistics

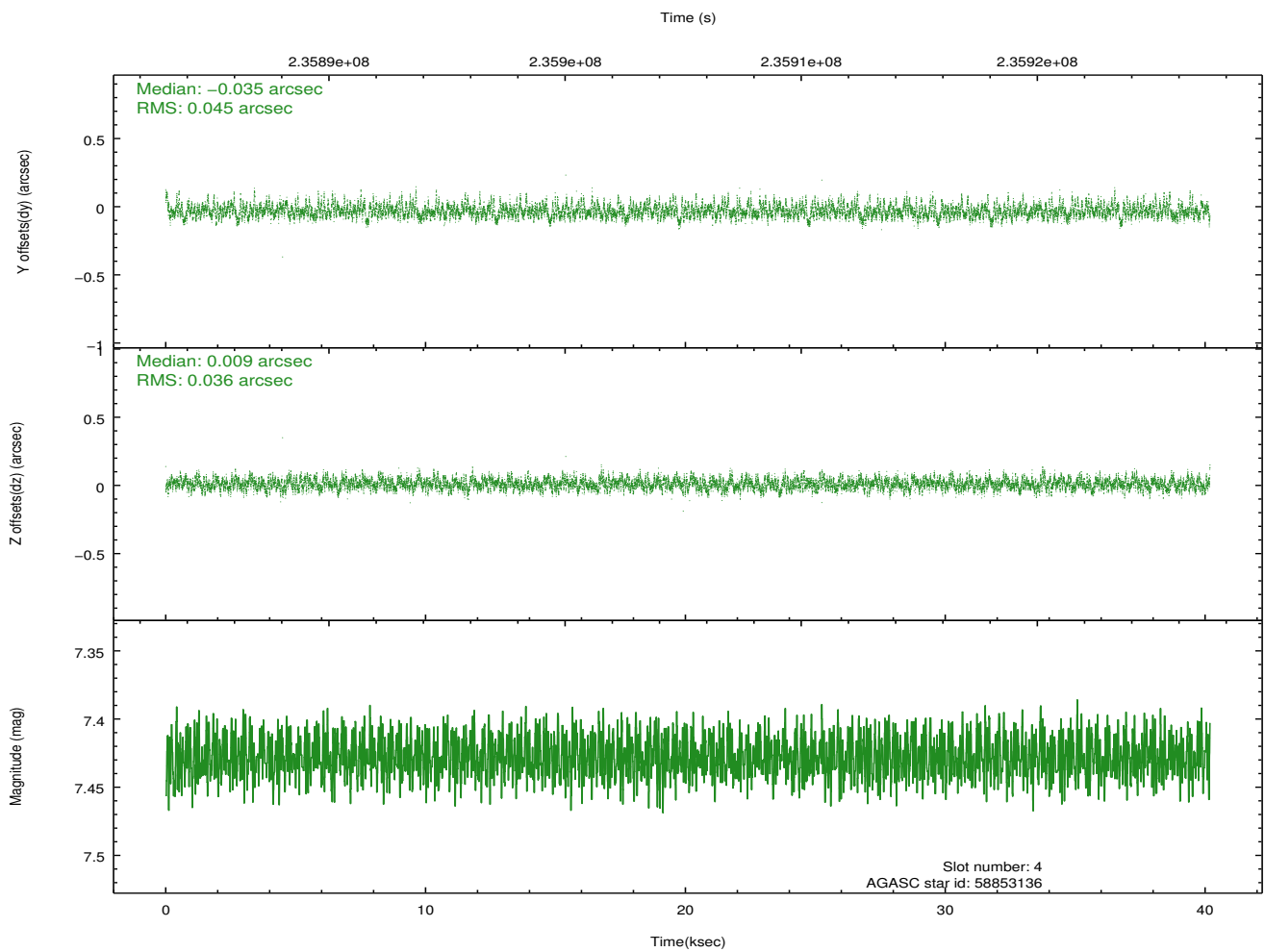
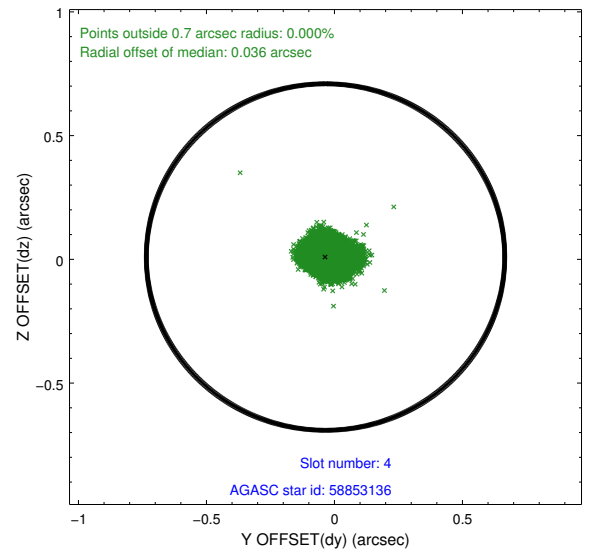
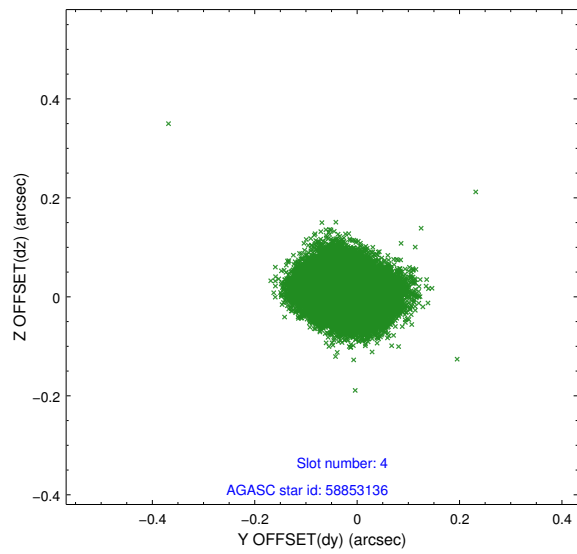
slot	status	id	mag	n_pts	med_dy	med_dz	dr1	dr2	ra	dec	mean_y	mean_z
0	FID	ACIS-S-2	7.11	9803	-0.058	-0.033	0.011	0.024	0.000000	0.000000	-759.89	-1731.62
1	FID	ACIS-S-4	7.21	9801	0.099	0.037	0.009	0.022	0.000000	0.000000	2153.50	176.97
2	FID	ACIS-S-5	7.24	9803	-0.073	0.005	0.009	0.015	0.000000	0.000000	-1812.77	170.54
3	GUIDE	58852048	8.39	19594	0.040	-0.114	0.064	0.101	283.366398	0.870285	1821.62	2162.61
4	GUIDE	58853136	7.43	19602	-0.035	0.009	0.061	0.099	284.607098	1.198128	-1852.50	-636.78
5	GUIDE	58853800	7.97	19601	0.035	-0.024	0.059	0.093	284.849220	1.406285	-2370.63	-1663.00
6	GUIDE	59377960	7.68	19600	0.050	0.030	0.078	0.135	283.627467	1.897490	2367.87	-1613.31
7	GUIDE	59376240	7.29	19597	-0.090	0.098	0.069	0.108	283.651753	1.887471	2273.60	-1613.64

2.4 Star Slots

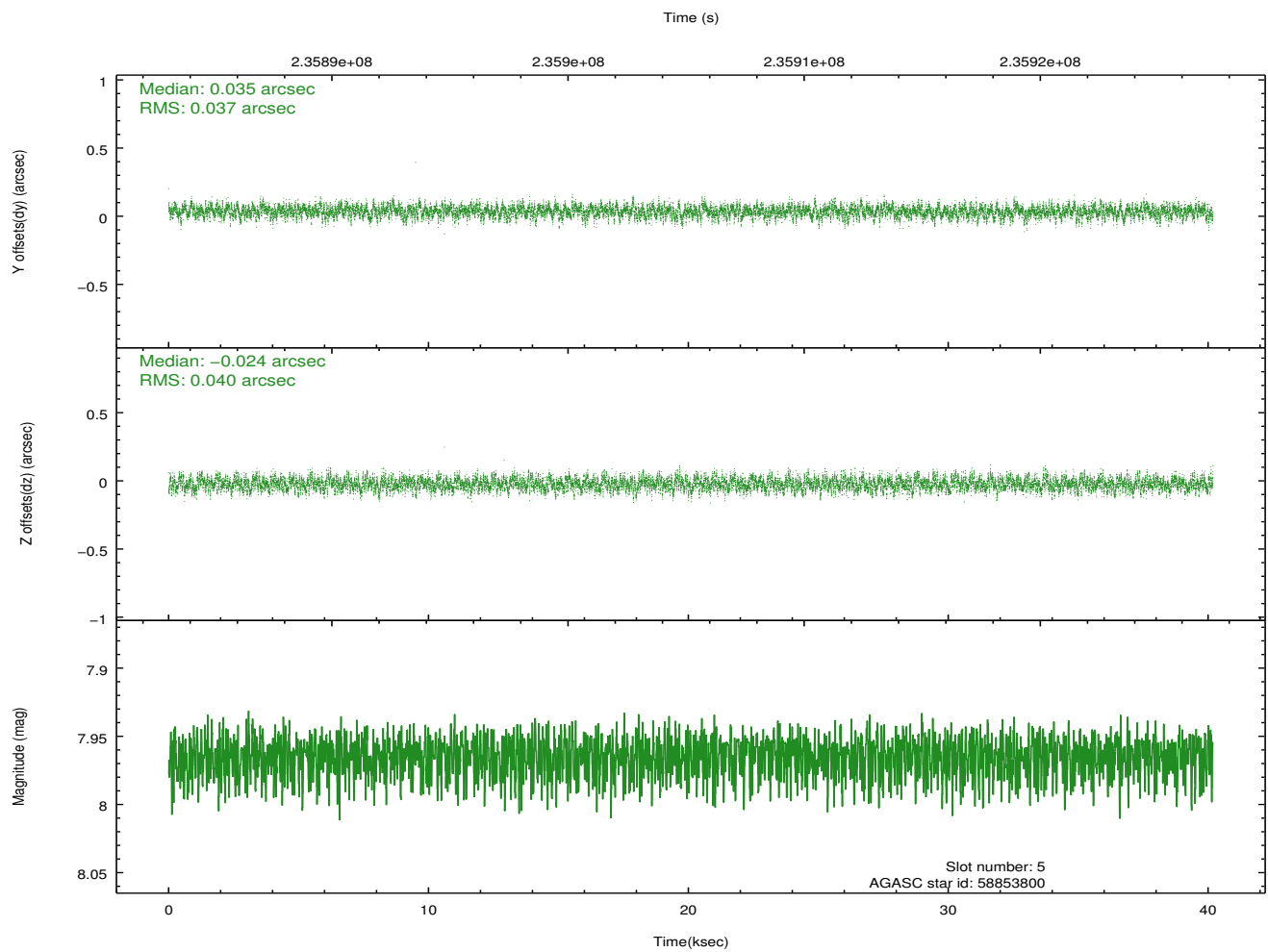
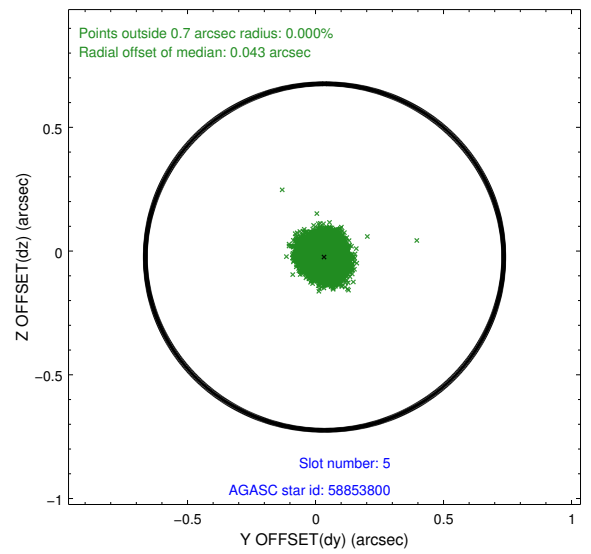
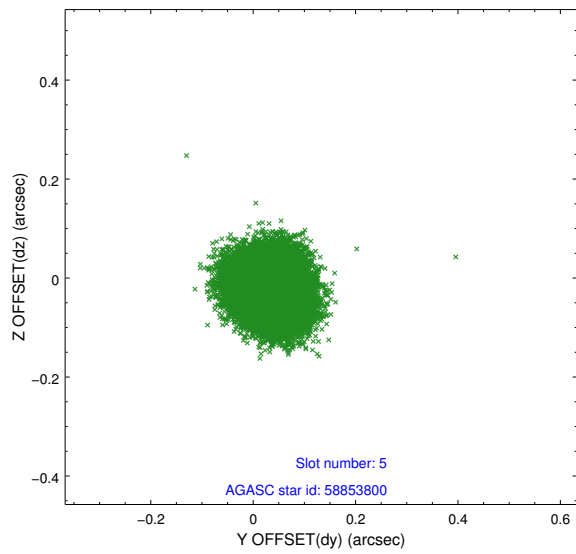
2.4.1 Slot 3



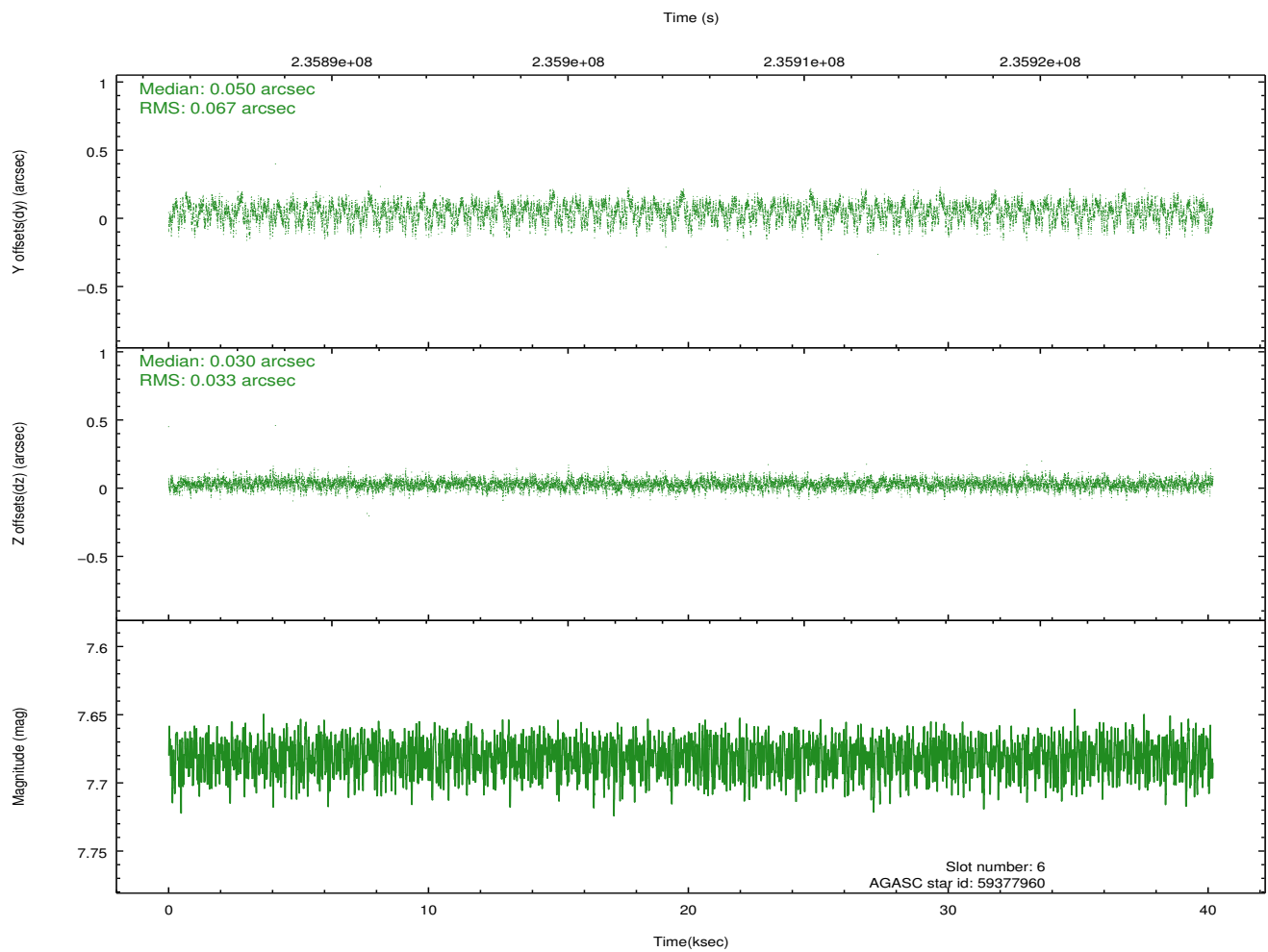
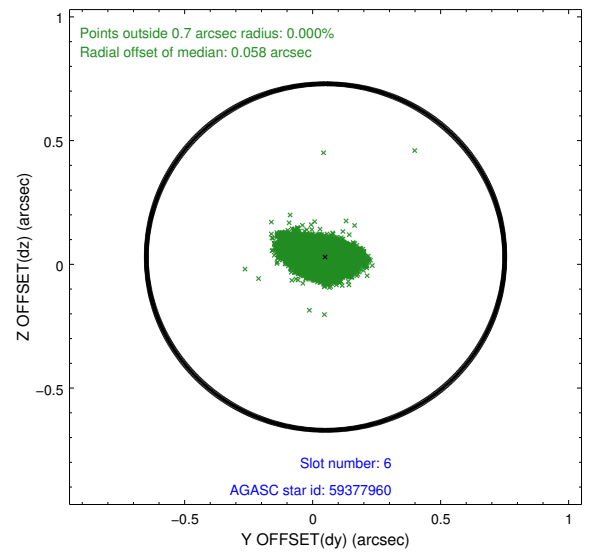
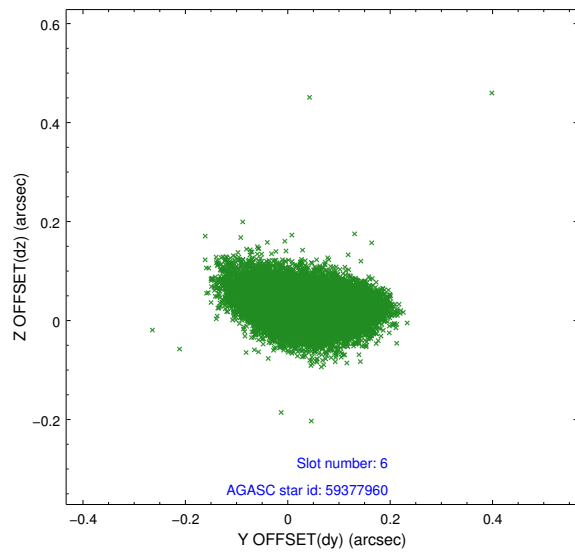
2.4.2 Slot 4



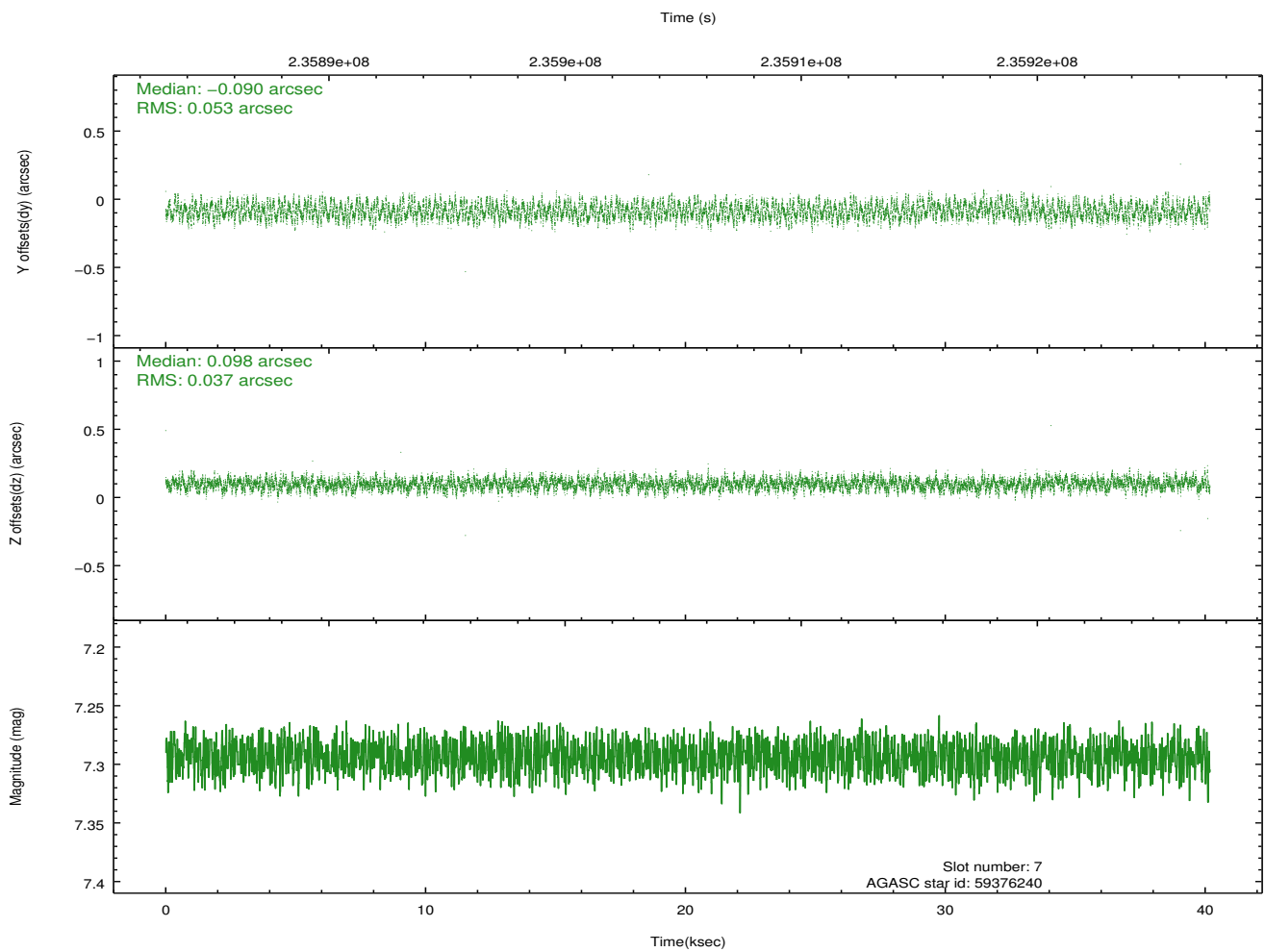
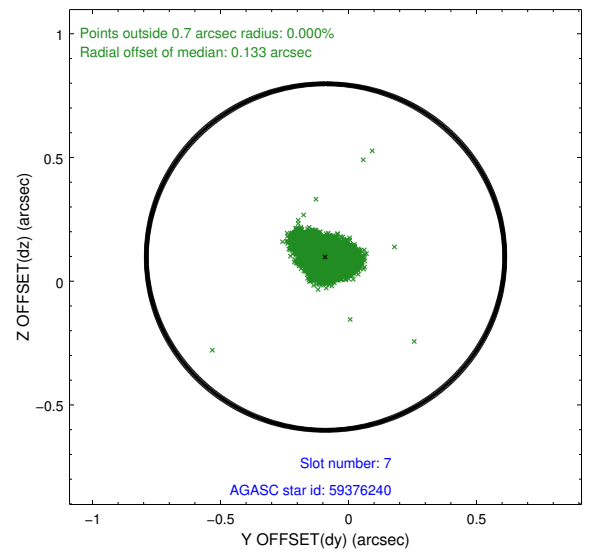
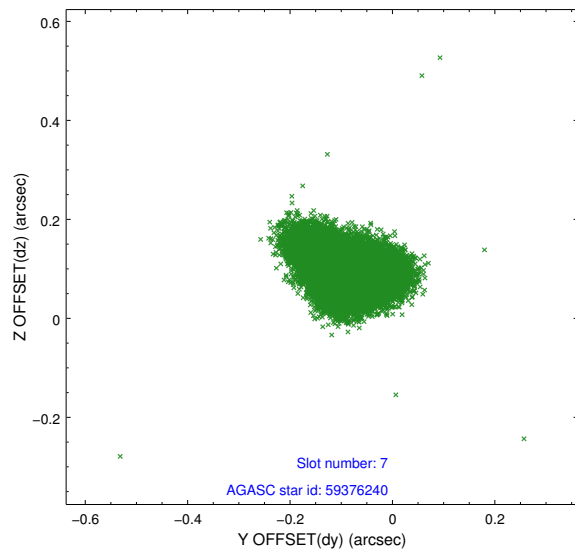
2.4.3 Slot 5



2.4.4 Slot 6

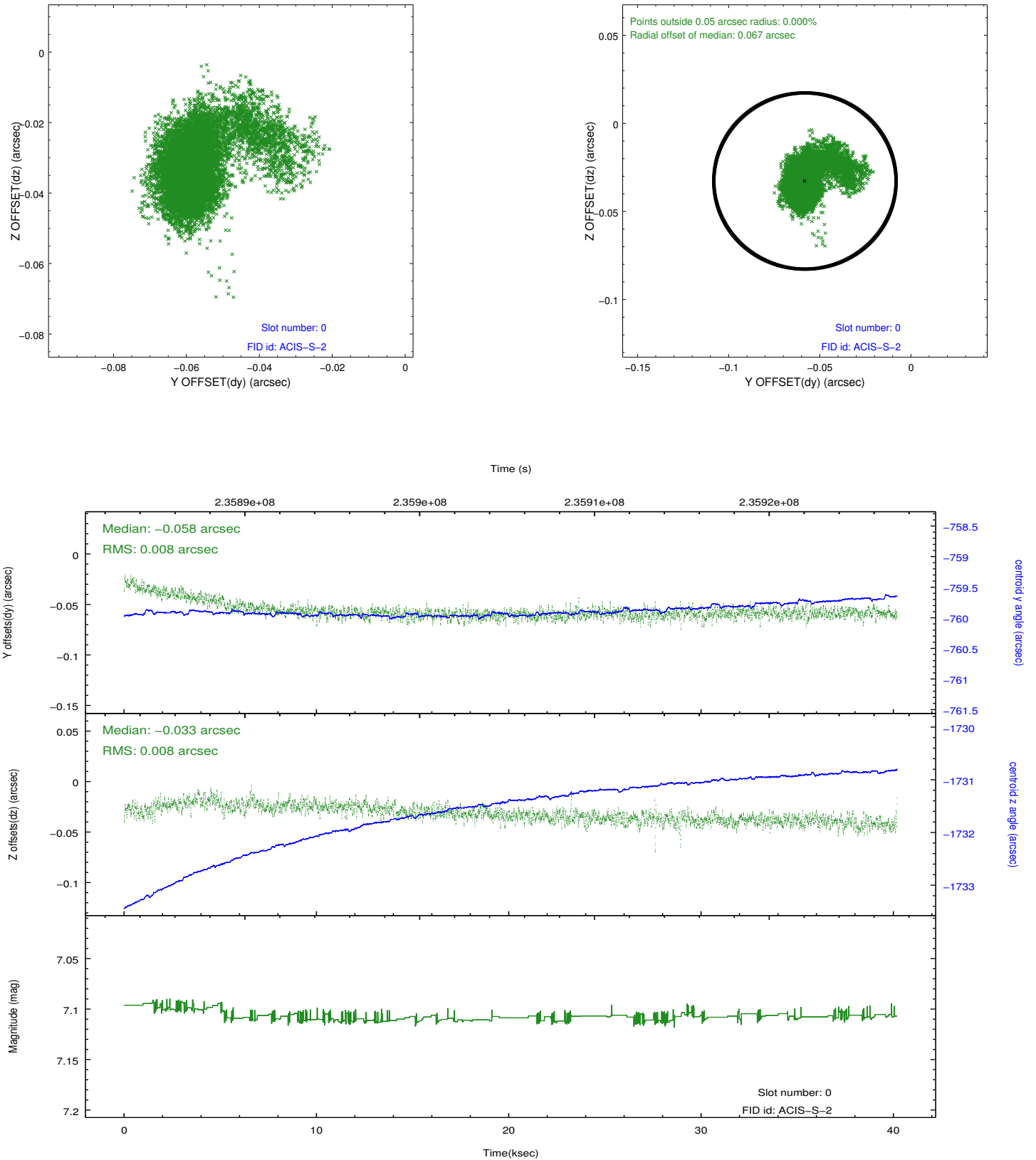


2.4.5 Slot 7

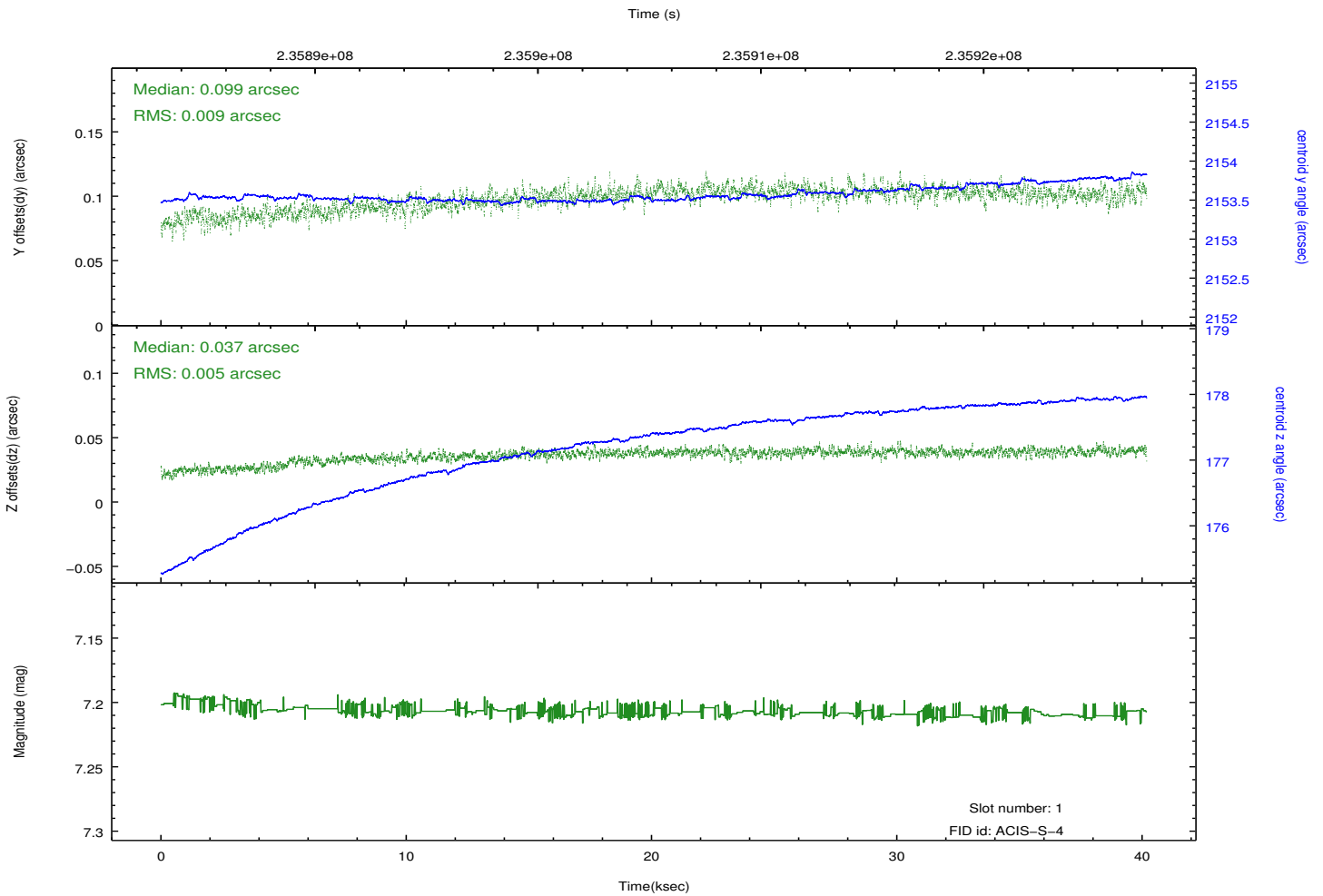
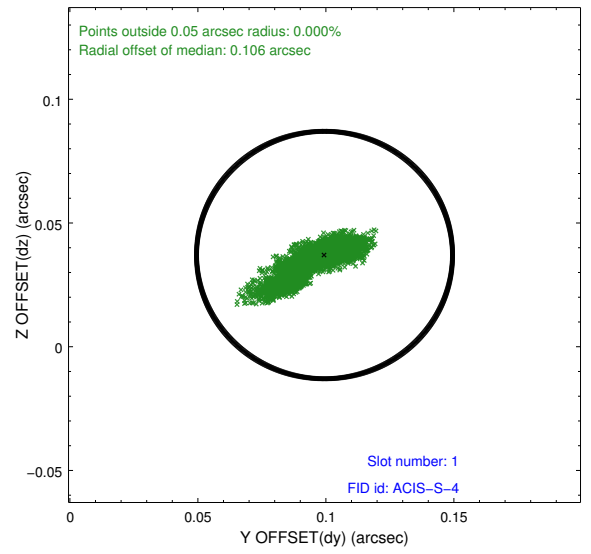
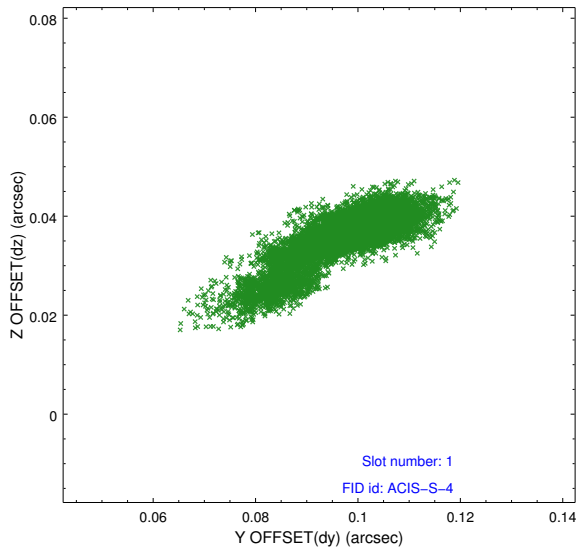


2.5 FID Slots

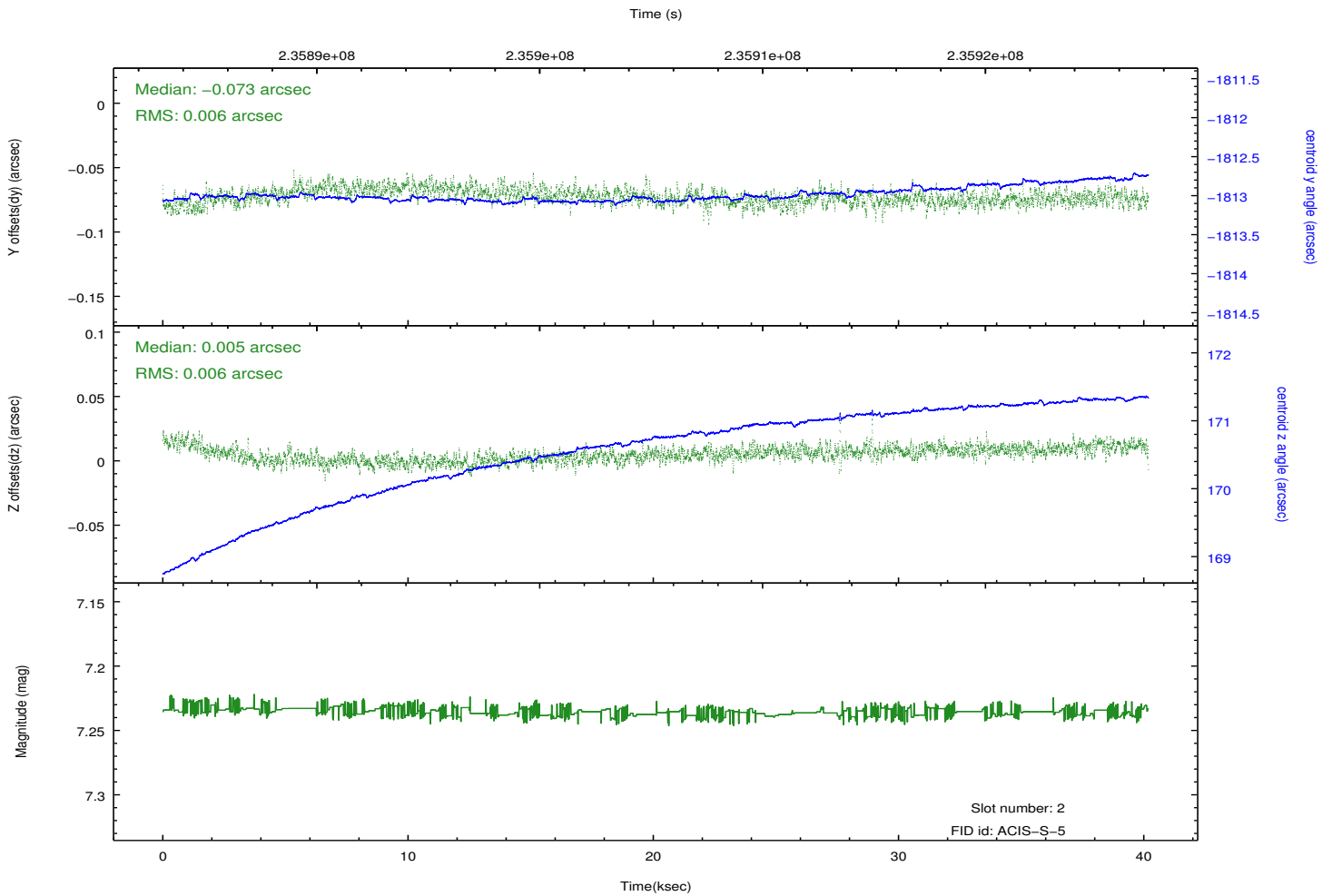
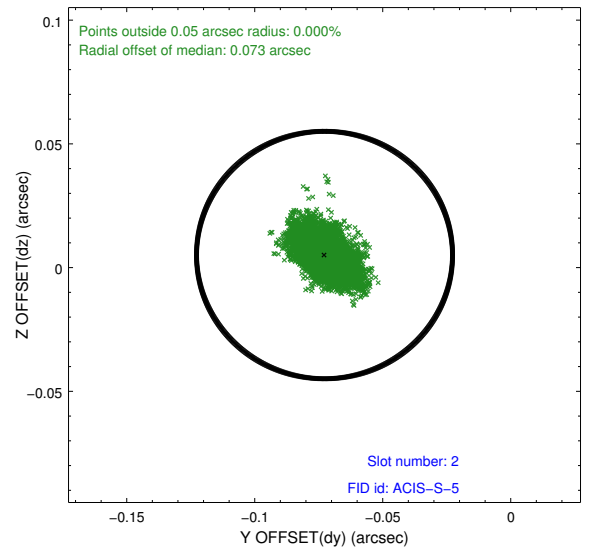
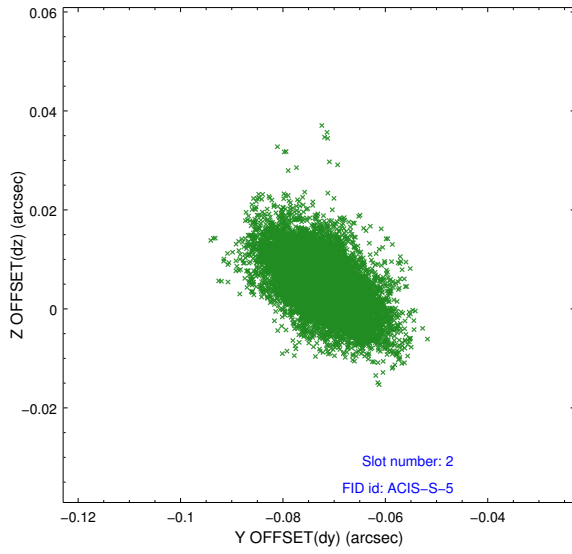
2.5.1 Slot 0



2.5.2 Slot 1



2.5.3 Slot 2



A Summary

A.1 Status

V&V Scientist	Jen Lauer
V&V Date (YYYY-MM-DD)	2013.01.17
V&V Edition	1
V&V Disposition and Status	OK
V&V Charge Time	40.08959

A.2 Comments

Preferred roll met.