

# V&V Reference Report

## L2 ASCDS Version : 8.4.3

Observation 6472 - L2 Version 3  
Chandra X-Ray Center

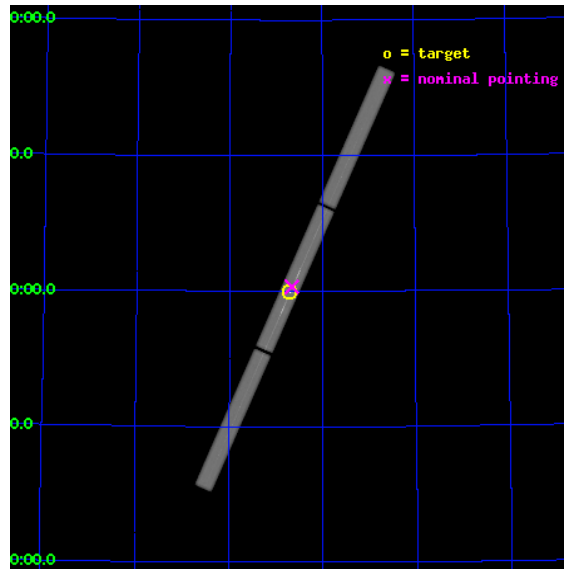
L2 Processing Date : Aug 11 2012

## Contents

<b>1</b>	<b>Front</b>	<b>2</b>
<b>2</b>	<b>OBI</b>	<b>3</b>
2.1	OBI . . . . .	3
2.1.1	Images . . . . .	3
2.1.2	Parameters . . . . .	4
2.1.3	Events . . . . .	4
2.2	Compared Parameters . . . . .	5
2.3	Aspect . . . . .	6
2.4	Star Slots . . . . .	9
2.4.1	Slot 3 . . . . .	9
2.4.2	Slot 4 . . . . .	10
2.4.3	Slot 5 . . . . .	11
2.4.4	Slot 6 . . . . .	12
2.4.5	Slot 7 . . . . .	13
2.5	FID Slots . . . . .	14
2.5.1	Slot 0 . . . . .	14
2.5.2	Slot 1 . . . . .	15
2.5.3	Slot 2 . . . . .	16
<b>3</b>	<b>Gratings</b>	<b>17</b>
3.1	LETG Arm . . . . .	17
<b>A</b>	<b>Summary</b>	<b>19</b>
A.1	Status . . . . .	19
A.2	Comments . . . . .	19

# 1 Front

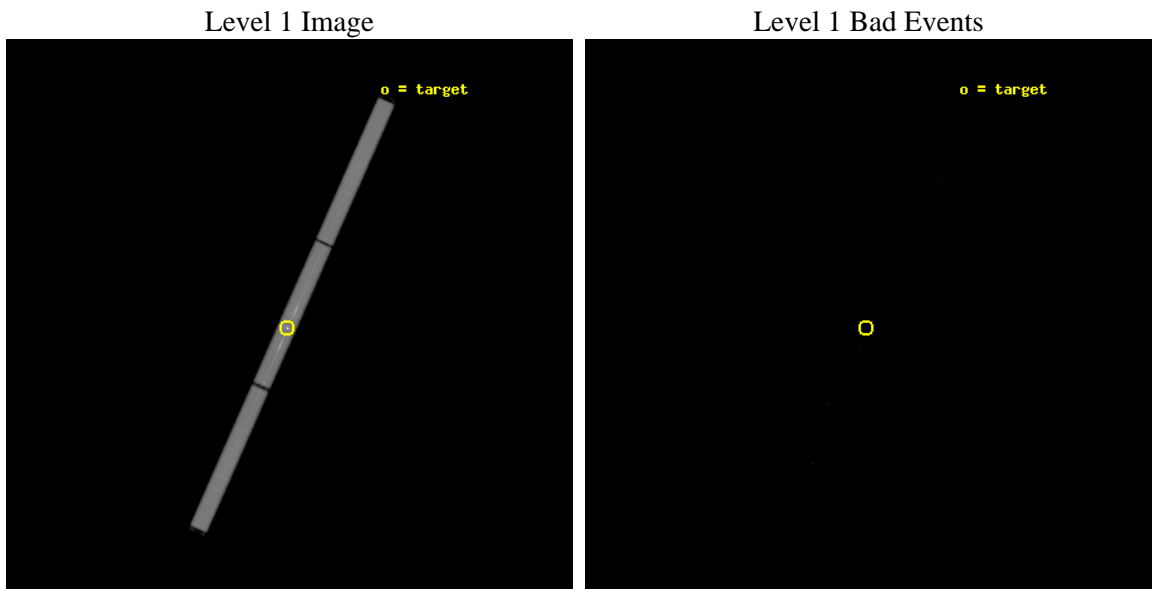
seq_num	290565	Sequence number
obs_id	6472	Observation id
title	AO7 Calibration Observations of Capella	Proposal title
observer	Dr. CXC Calibration	Principal investigator
object	Capella	Source name
ra_targ	79.17625	Observer's specified target RA [deg]
dec_targ	45.997889	Observer's specified target Dec [deg]
ra_nom	79.164266326513	Nominal RA [deg]
dec_nom	46.016421168016	Nominal Dec [deg]
roll_nom	293.90984532076	Nominal Roll [deg]
revision	3	Processing version of data
ontime	30181.254530936	[s]
livetime	29909.628436645	Ontime multiplied by DTCOR
l2events	2322101	Number of level 2 events



## 2 OBI

### 2.1 OBI

#### 2.1.1 Images



## 2.1.2 Parameters

obi_num	0	Obi number	sched_exp_time	30000.000000	[s] Scheduled observation exposure time
ascdsver	8.4.5	Processing system revision	ontime	30181.382657617	[s]
caldsver	4.5.1.1	&#160	l1events	3115097	Number of level 1 events
date	2012-08-11T06:22:12	Date and time of file creation			
revision	3	Processing version of data			

## 2.1.3 Events

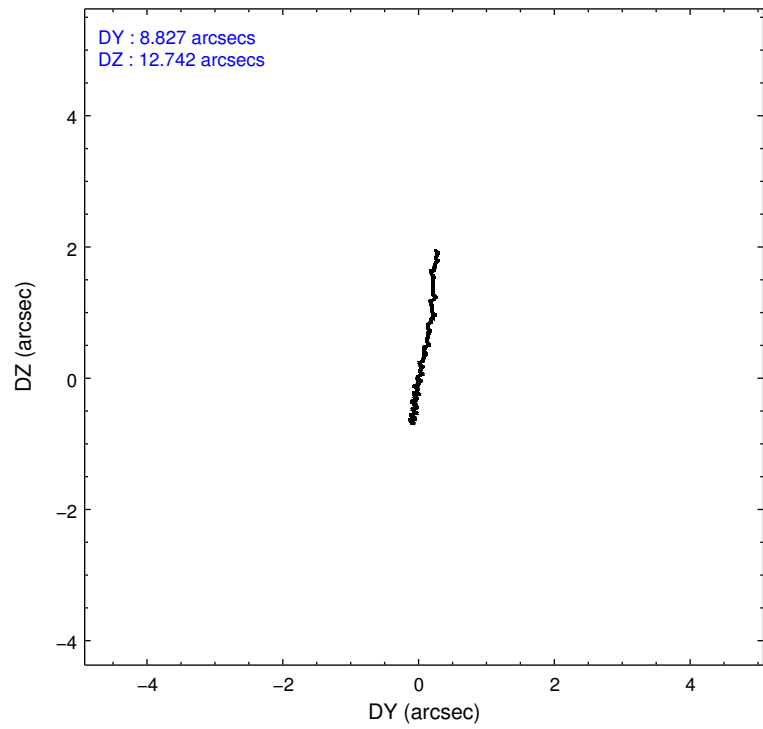
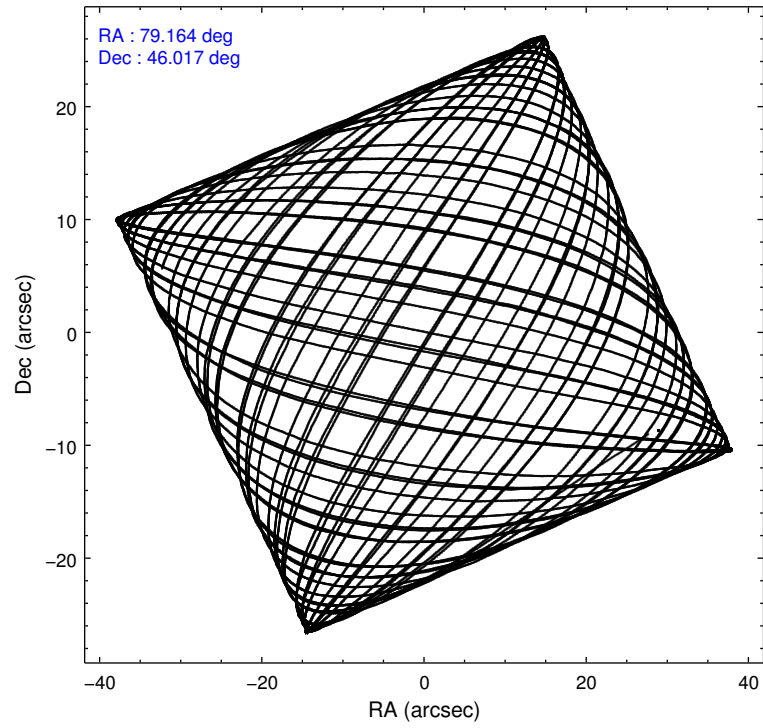
### Level 1 Events

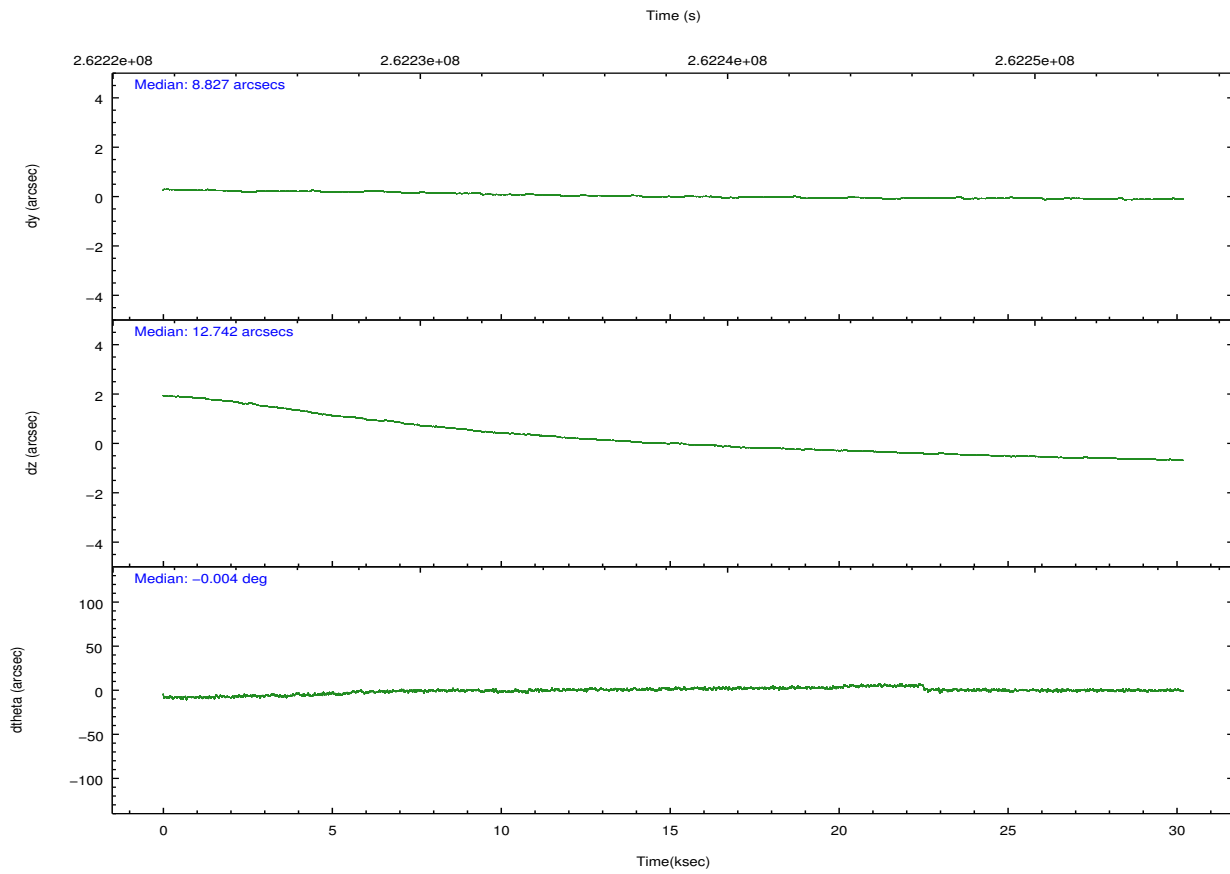
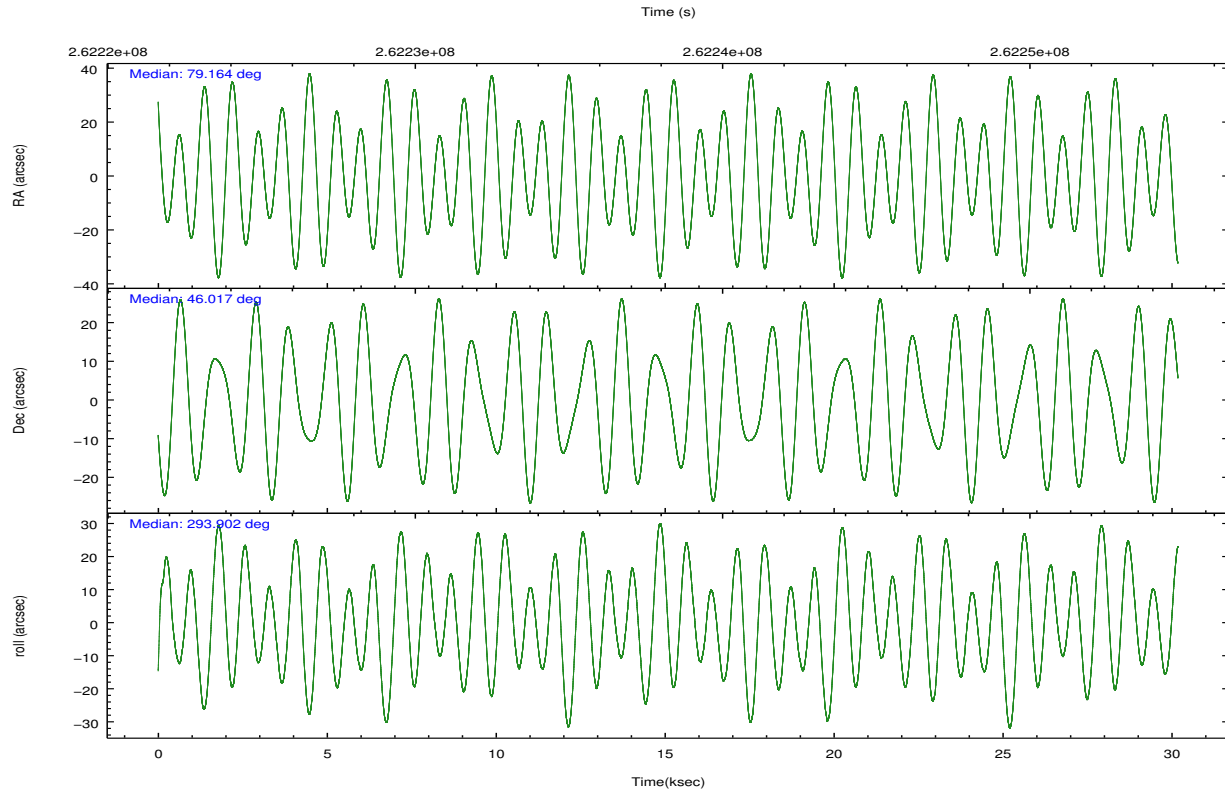
	<b>segment 1</b>	<b>segment 2</b>	<b>segment 3</b>
level 1 events	986336	1136504	992257
rejected events	26858	27218	26796
rejected %	2%	2%	2%

## 2.2 Compared Parameters

Parameter	Planned	Actual	Parameter	Planned	Actual
Instrument	HRC	HRC	Obspar format version number	7	7
Detector	HRC-S	HRC-S	Obspar file type	PREDICTED	ACTUAL
Grating	LETG	LETG	Obspar update status	NONE	UPDATED
Data mode	OBSERVING	OBSERVING			
Observation mode	POINTING	POINTING			
[deg] Pointing RA	79.129816	79.16426632651273			
[deg] Pointing Dec	46.032101	46.01642116801644			
[deg] Pointing Roll	293.867306	293.909845320764			
[s] Window start time (MET)	254448065.184000	254448065.184000			
[s] Window stop time (MET)	262742465.184000	262742465.184000			
[mm] SIM focus pos	-1.429586	-1.428180813131781			
[mm] SIM defocus	0.1037507710433287	0.1051558262725154			
[mm] SIM translation stage pos	250.455976	250.466033080201			
[mm] SIM translation stage offset	0	-0.01005468664627074			
[s] Observation start time (MET)	262223311.184000	262222289.28207			
Observation start date	2006-04-23T23:47:26	2006-04-23T23:31:29			
[s] Observation end time (MET)	262253311.184000	262253932.05855			
Observation end date	2006-04-24T08:07:26	2006-04-24T08:18:52			

## 2.3 Aspect



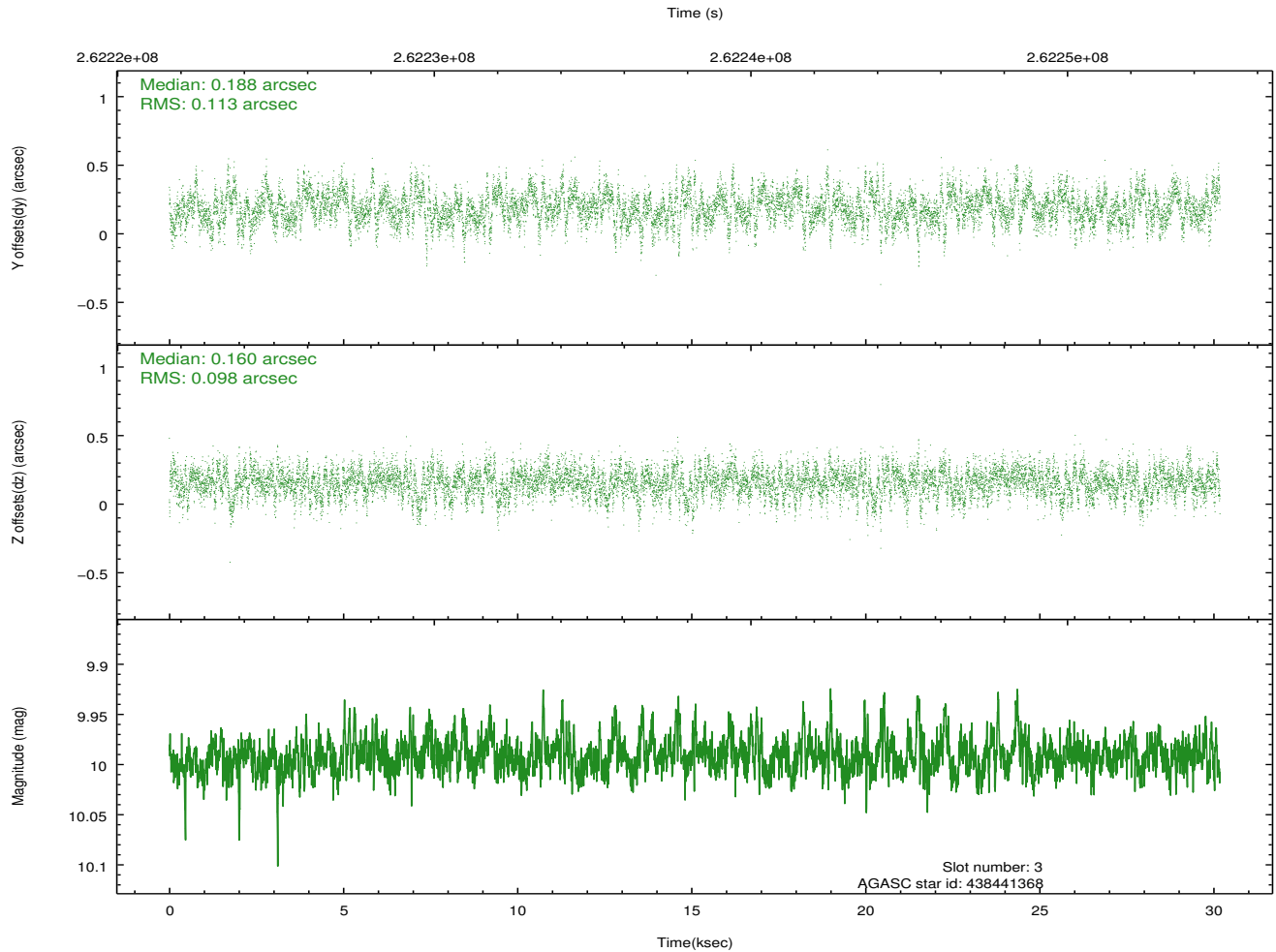
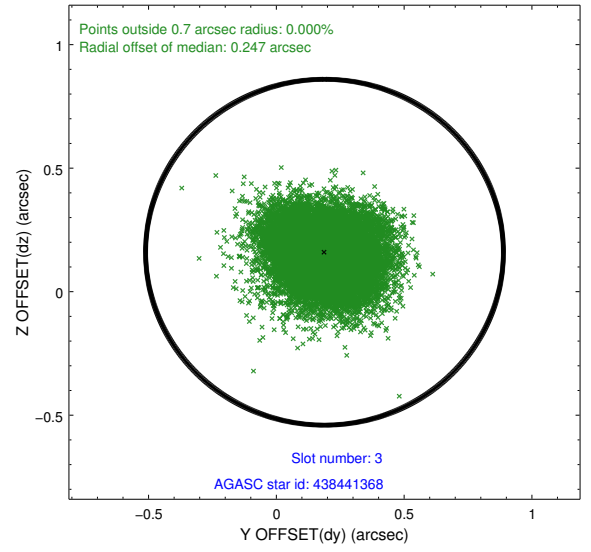
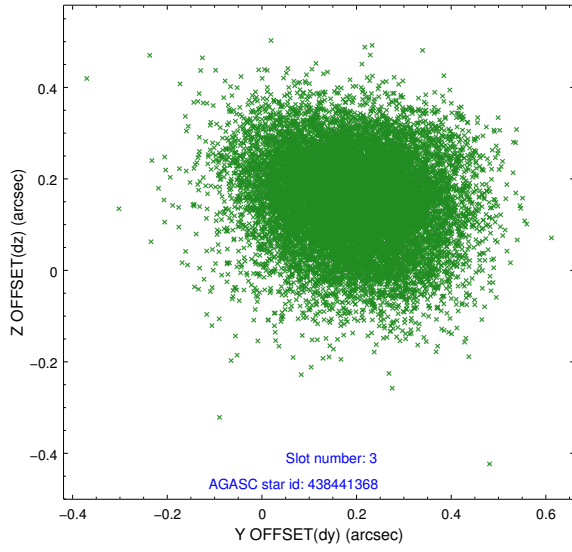


### Slot Statistics

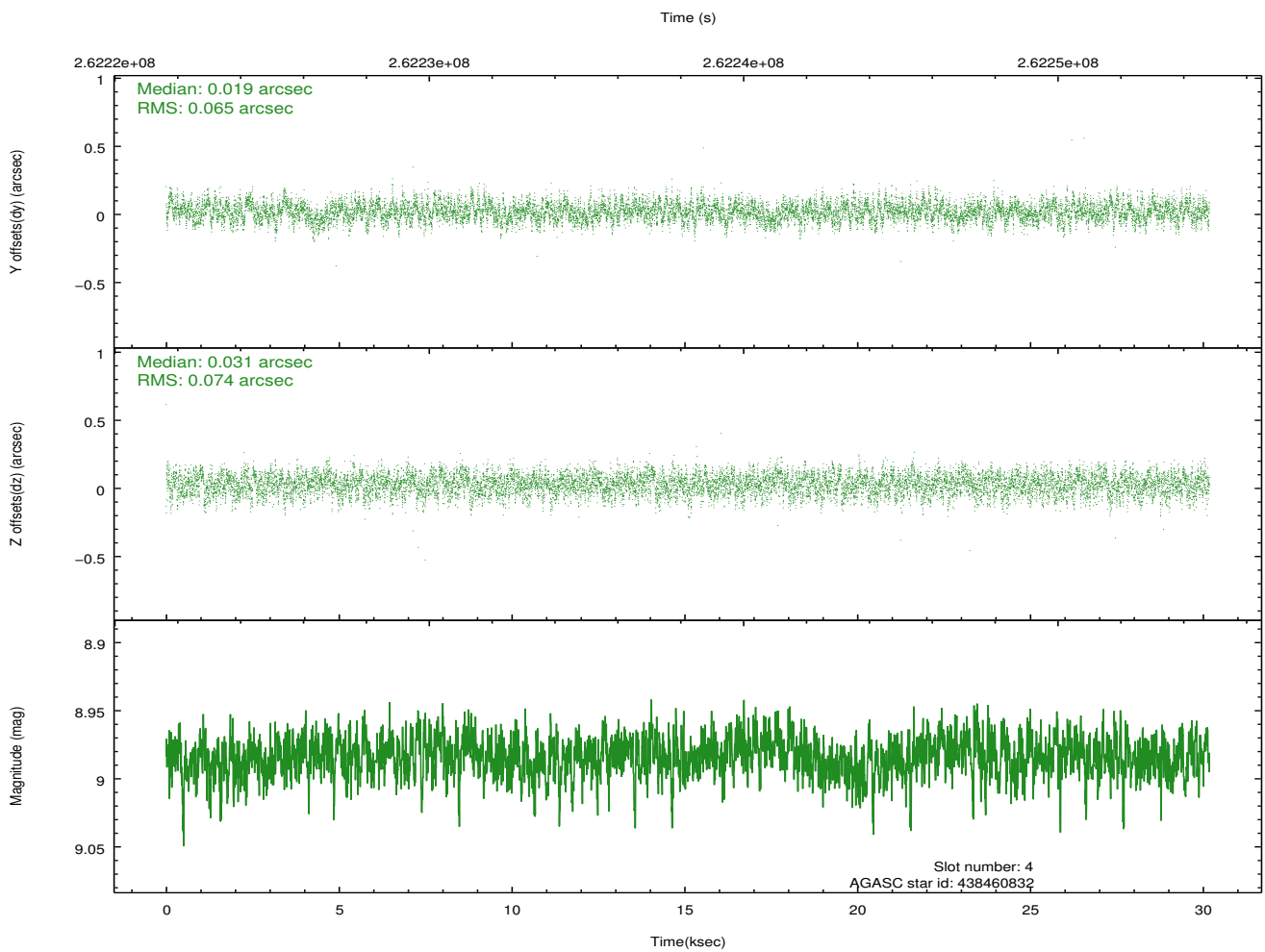
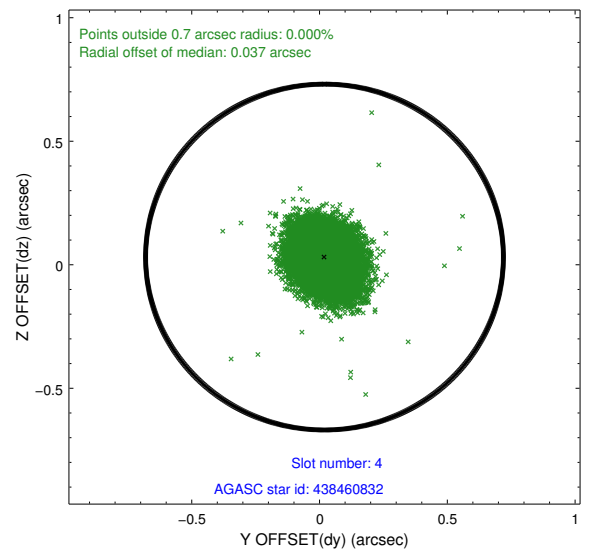
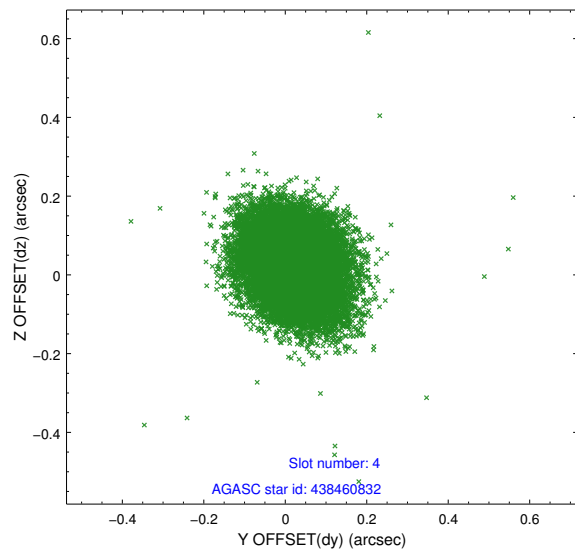
slot	status	id	mag	n_pts	med_dy	med_dz	dr1	dr2	ra	dec	mean_y	mean_z
0	FID	HRC-S-1	7.07	7362	0.097	-0.141	0.006	0.011	0.000000	0.000000	-1163.09	-461.73
1	FID	HRC-S-2	7.06	7362	0.081	-0.090	0.023	0.050	0.000000	0.000000	1236.42	-454.37
2	FID	HRC-S-4	7.04	7359	0.225	-0.073	0.021	0.046	0.000000	0.000000	1235.46	570.38
3	GUIDE	438441368	9.99	14703	0.188	0.160	0.159	0.261	78.646413	46.420494	-1766.82	-529.64
4	GUIDE	438460832	8.98	14716	0.019	0.031	0.104	0.167	78.414614	45.554782	835.30	-2340.32
5	GUIDE	440164960	8.30	14717	-0.075	-0.082	0.077	0.127	79.132526	46.140947	-354.97	164.67
6	GUIDE	440150048	7.17	14724	-0.236	-0.016	0.077	0.127	79.112838	46.416060	-1281.12	520.90
7	GUIDE	440163960	8.88	14713	0.099	-0.083	0.082	0.133	79.298370	45.827072	845.93	88.73

## 2.4 Star Slots

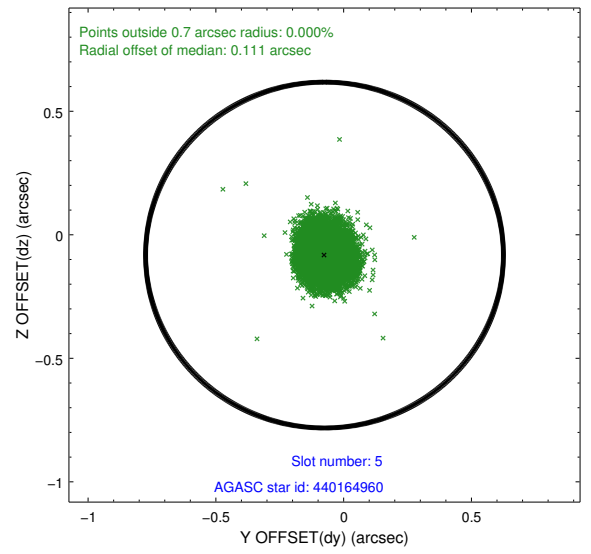
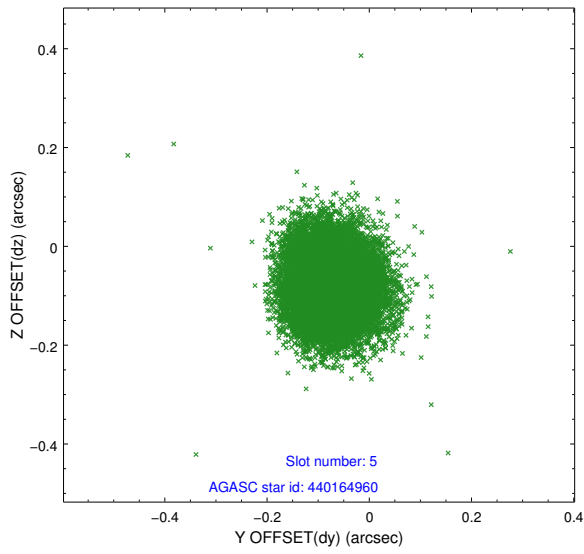
### 2.4.1 Slot 3



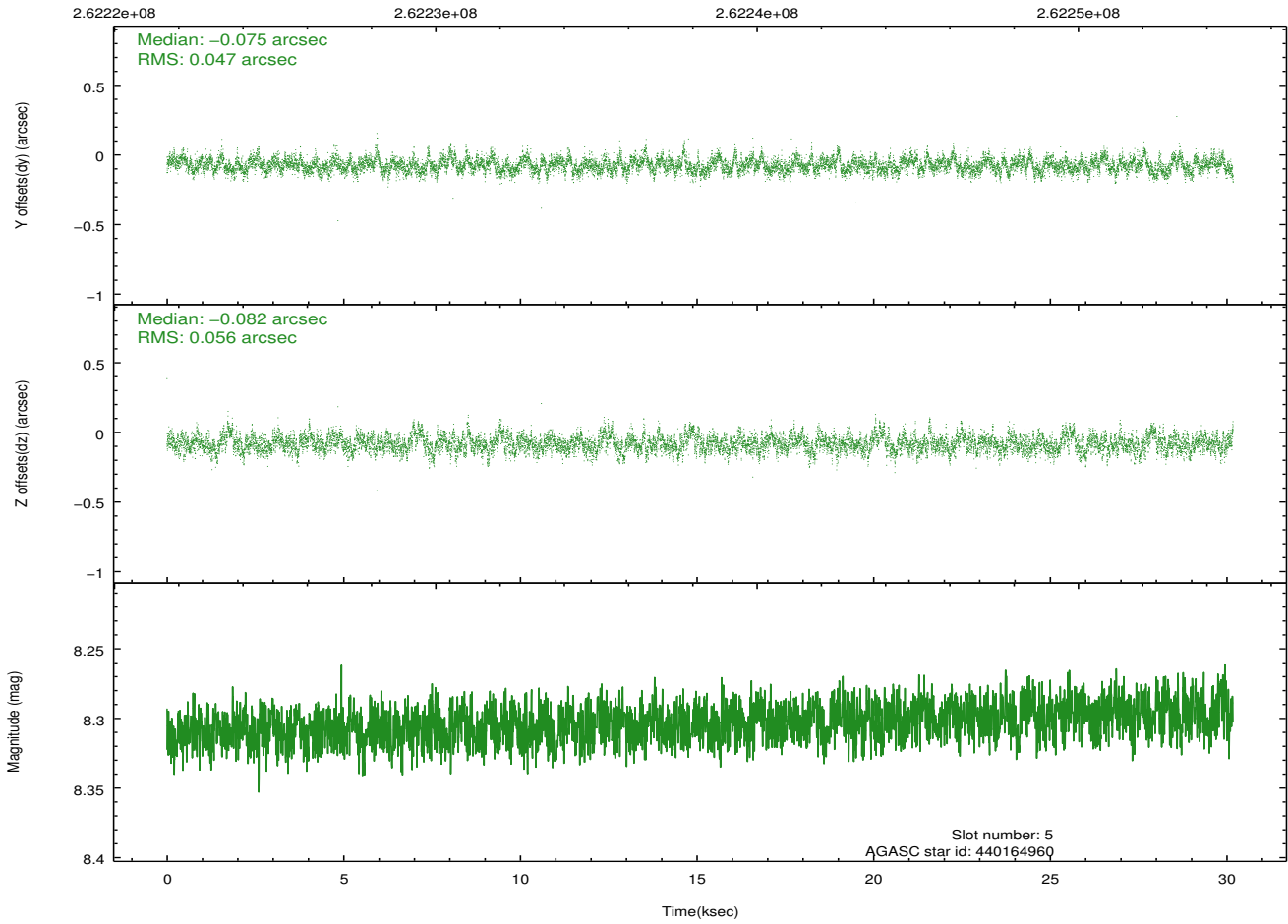
## 2.4.2 Slot 4



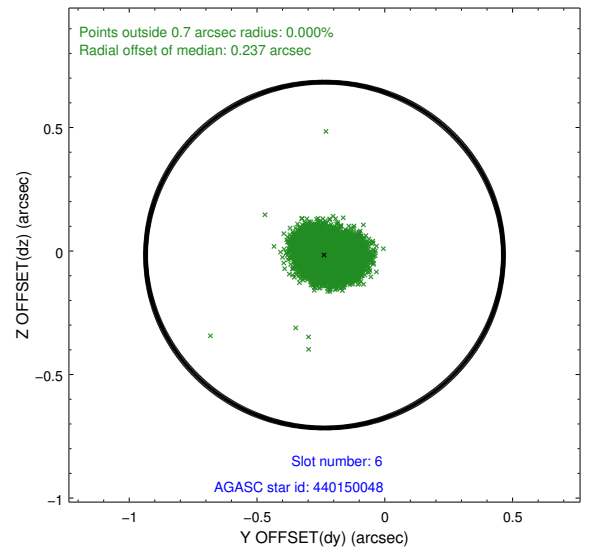
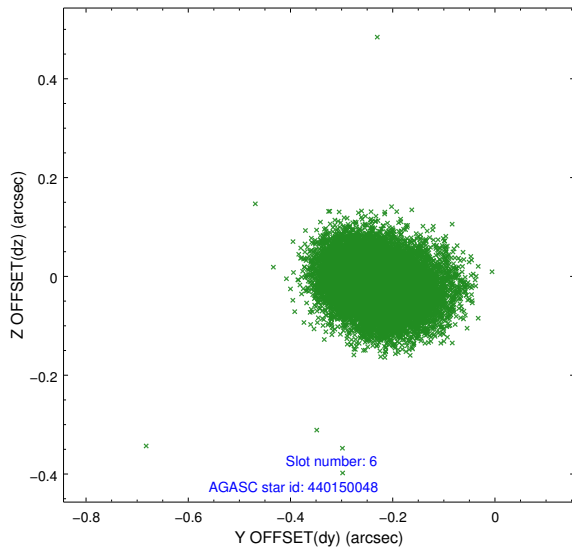
### 2.4.3 Slot 5



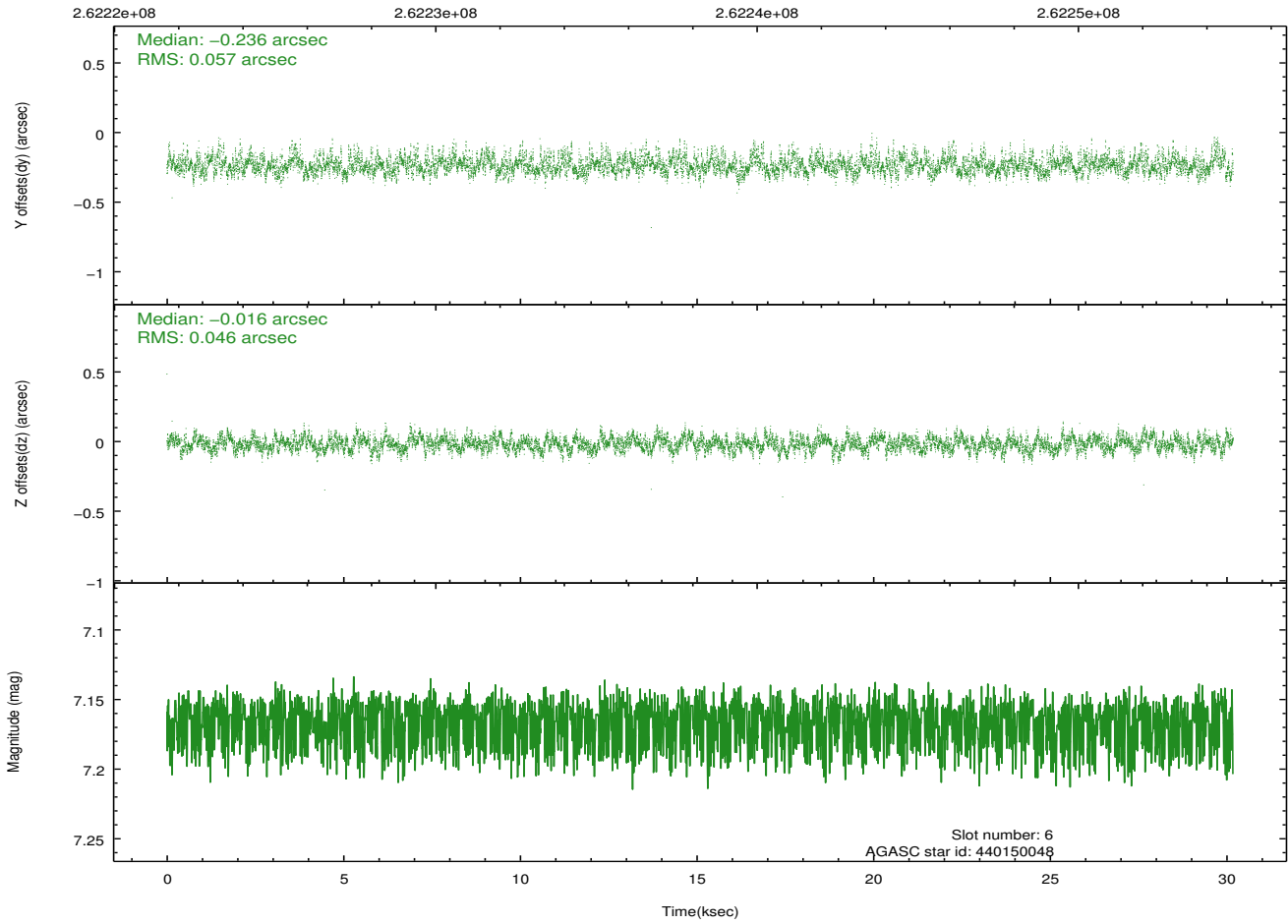
Time (s)



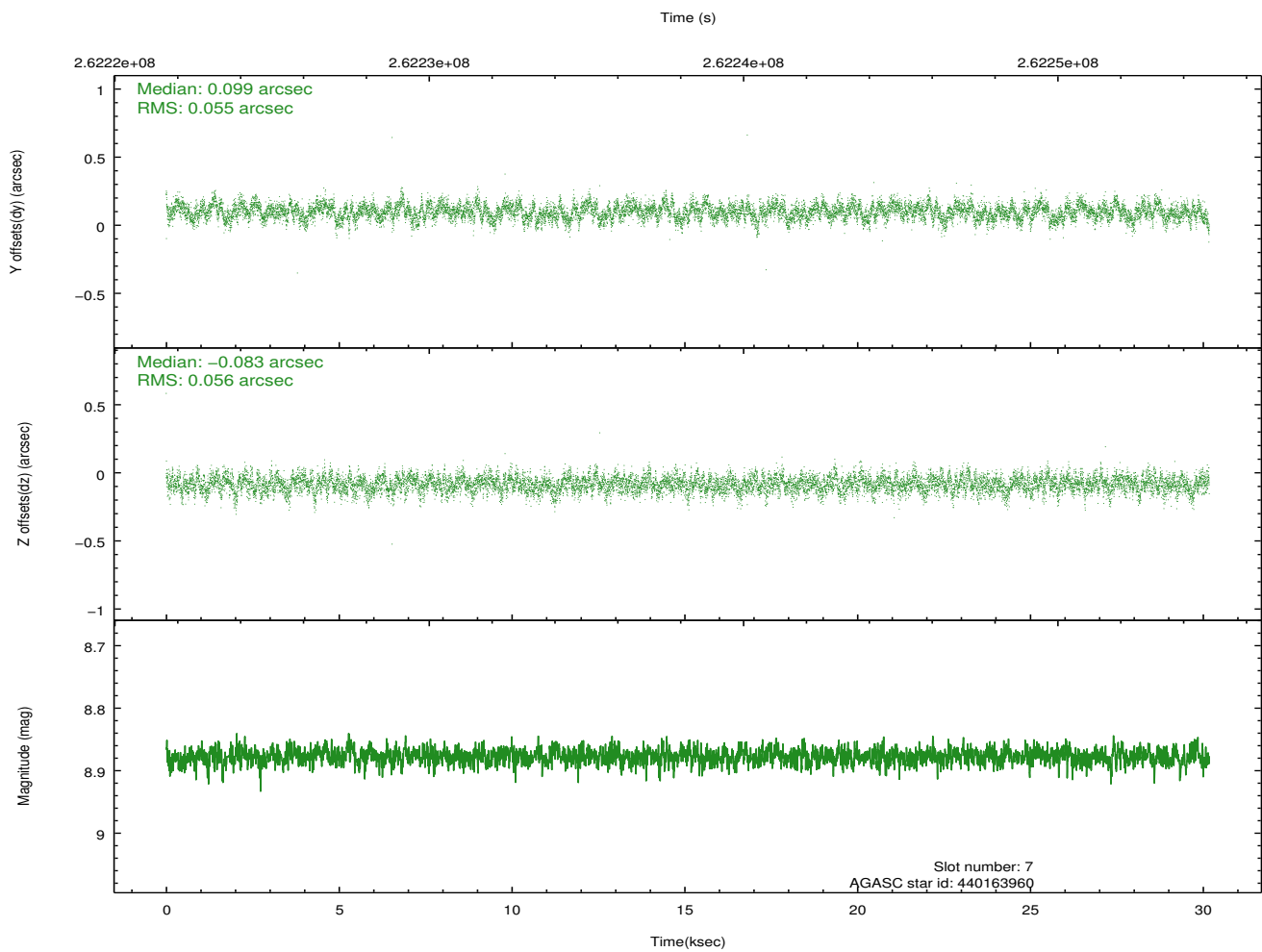
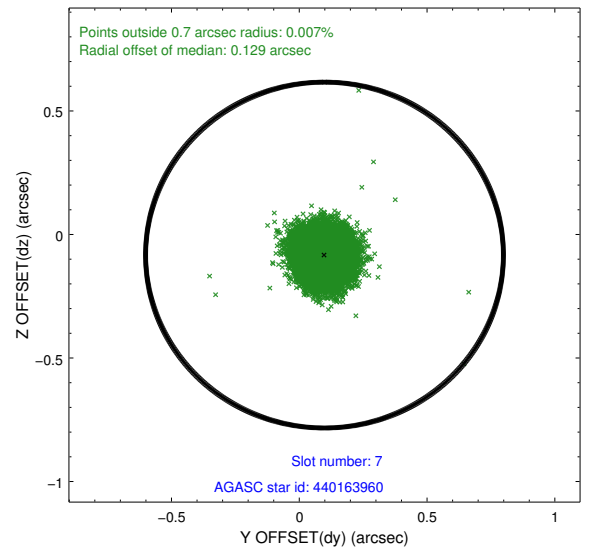
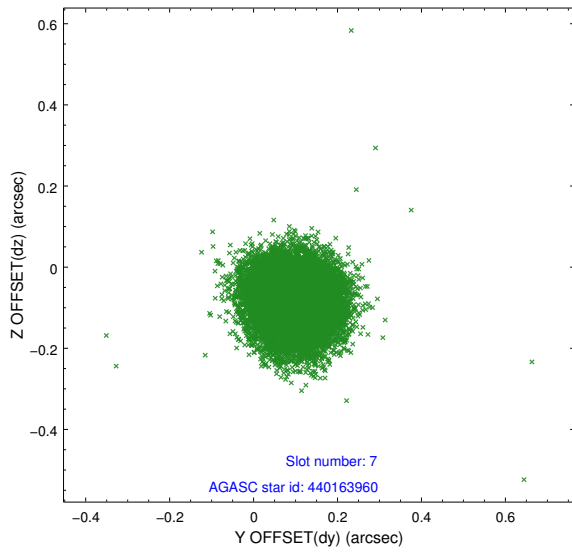
### 2.4.4 Slot 6



Time (s)

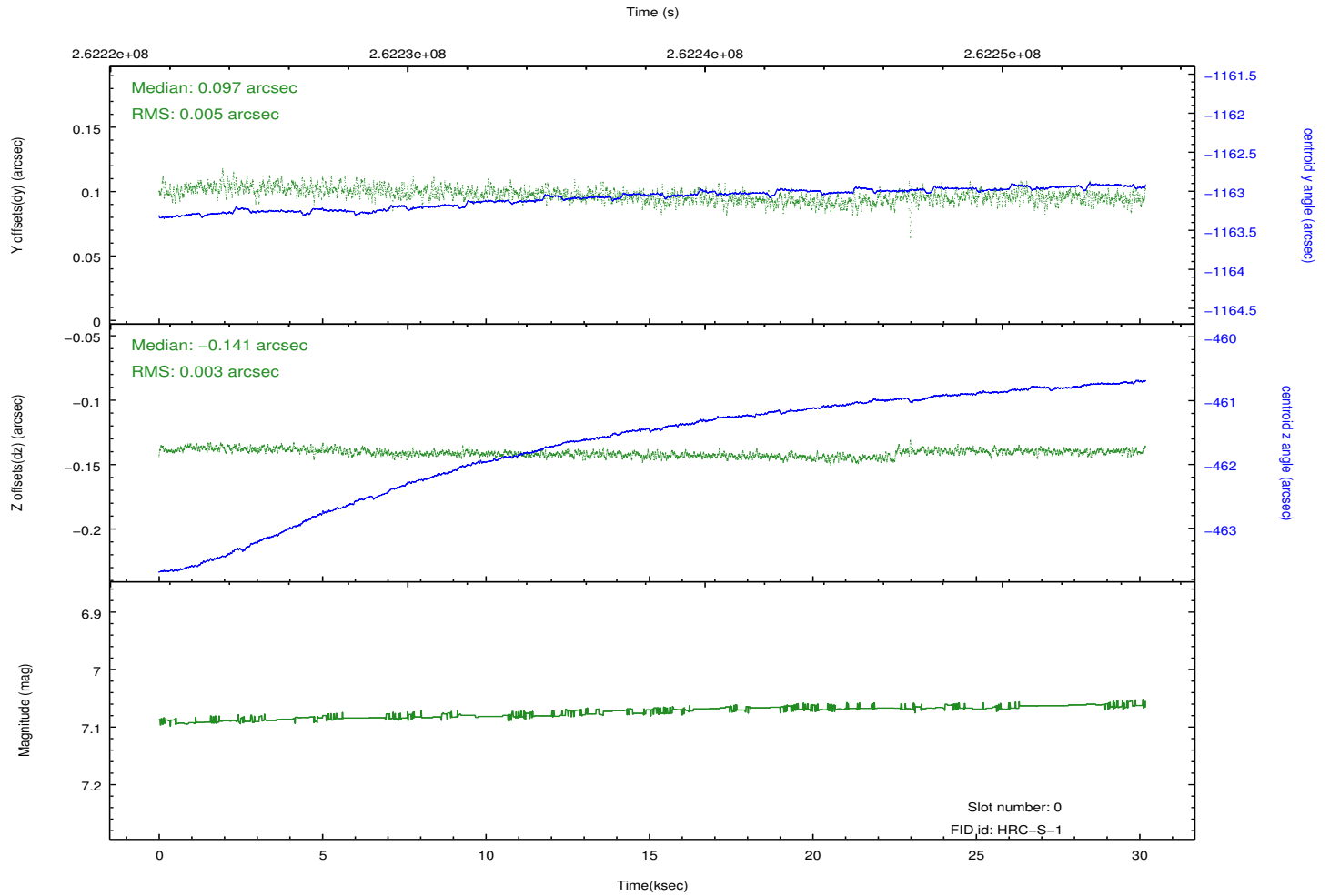
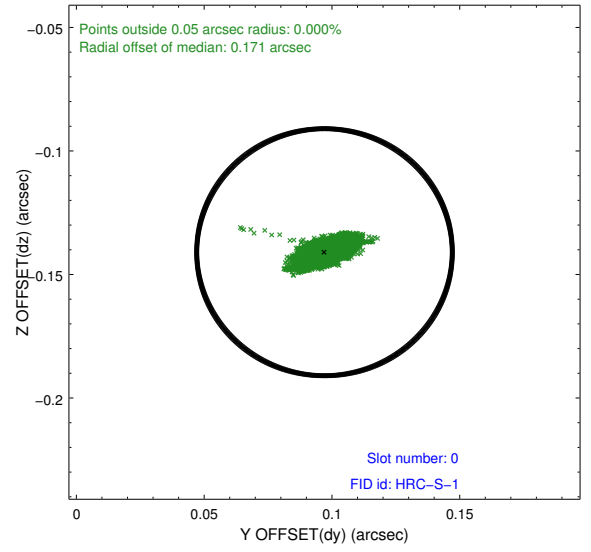
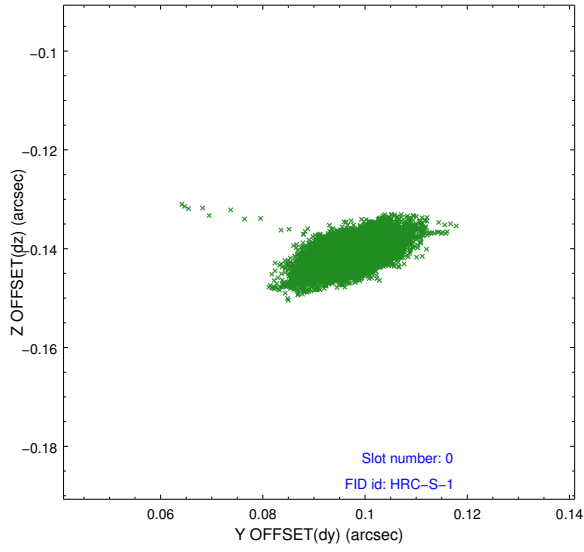


## 2.4.5 Slot 7

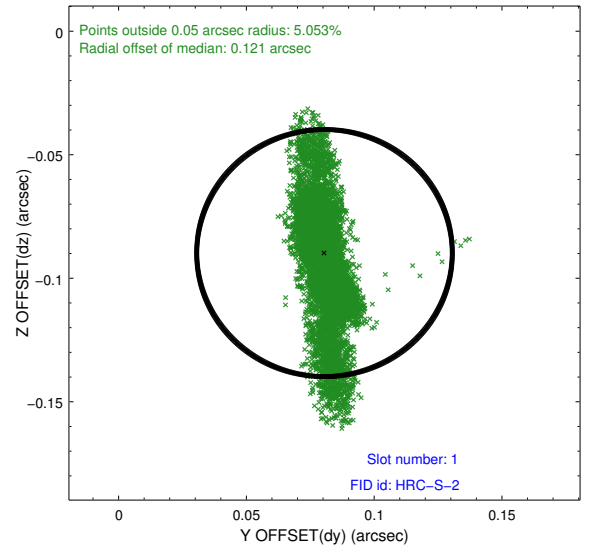
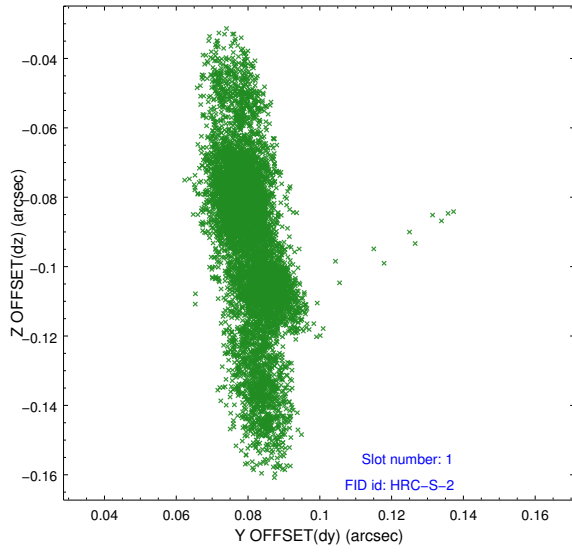


## 2.5 FID Slots

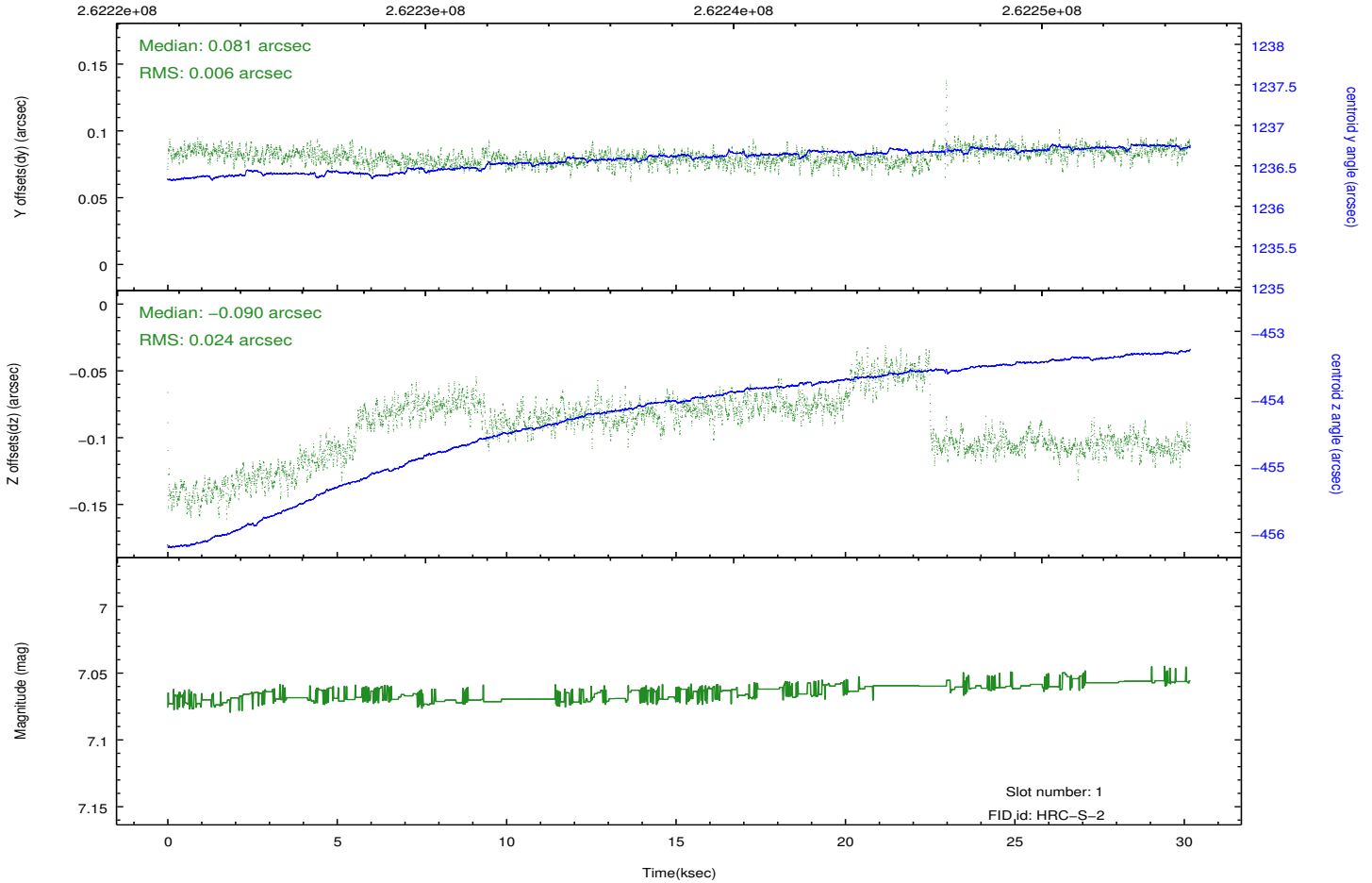
### 2.5.1 Slot 0



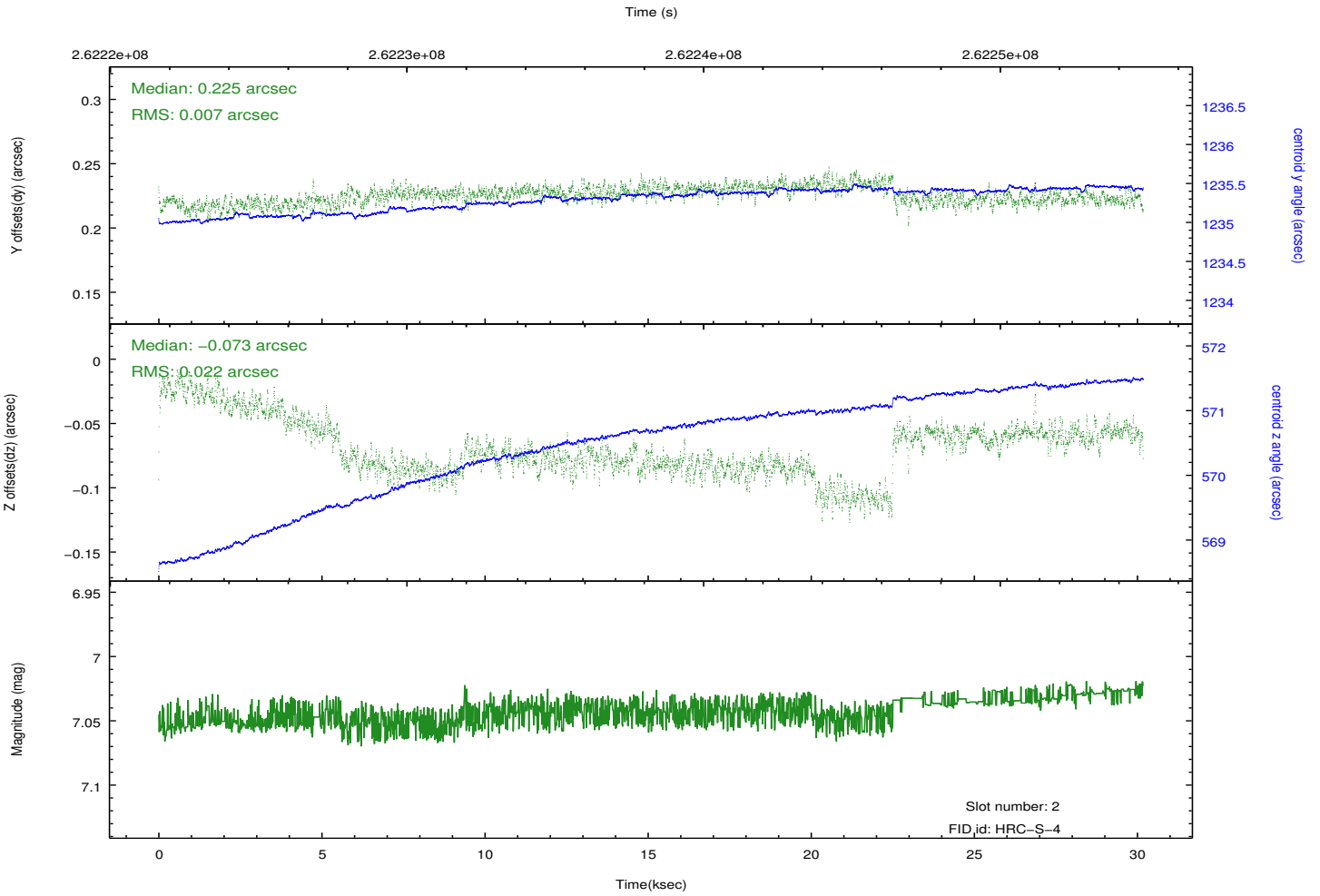
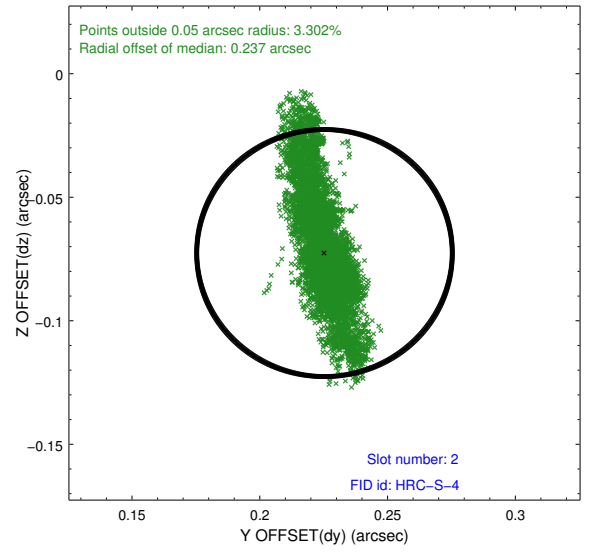
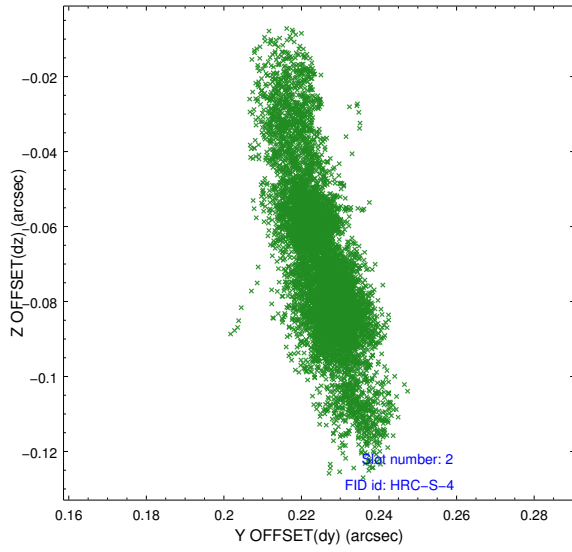
## 2.5.2 Slot 1



Time (s)

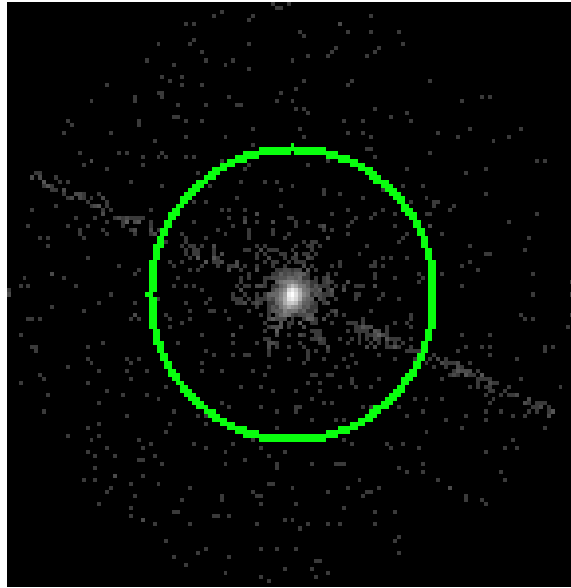


### 2.5.3 Slot 2

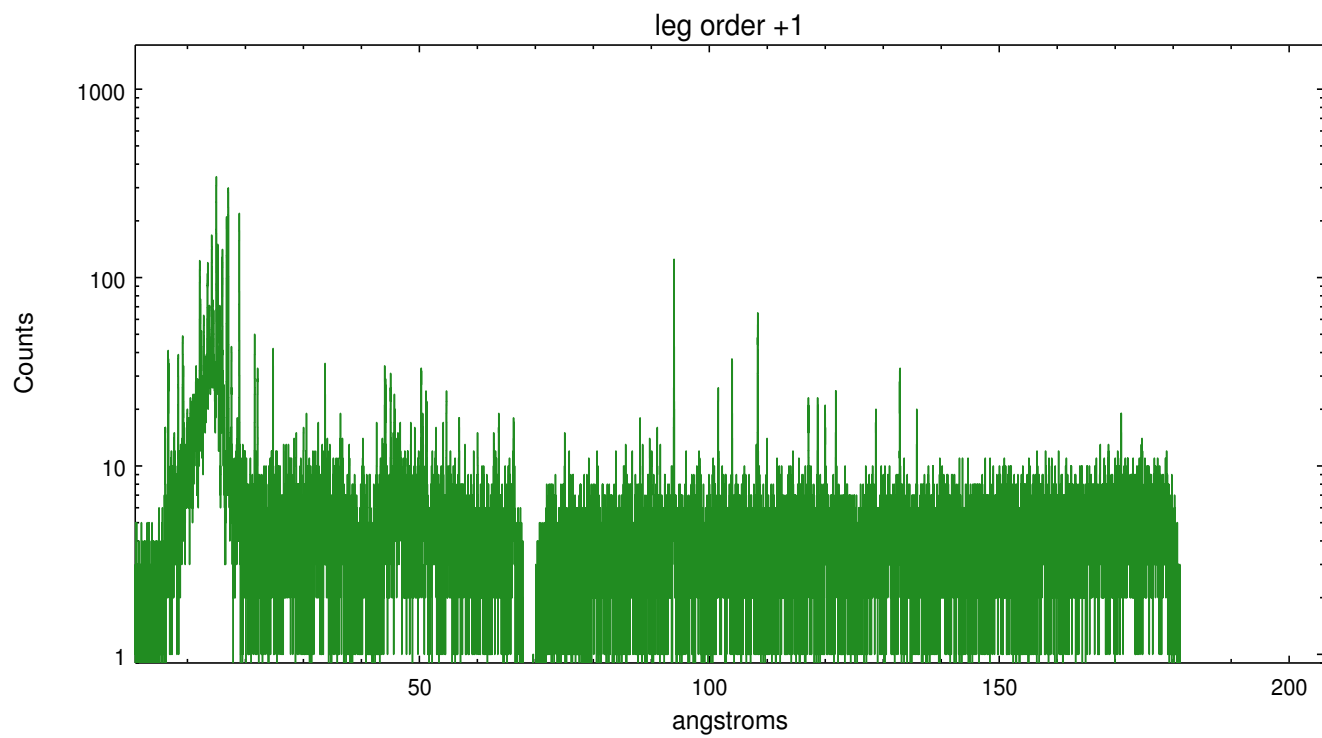
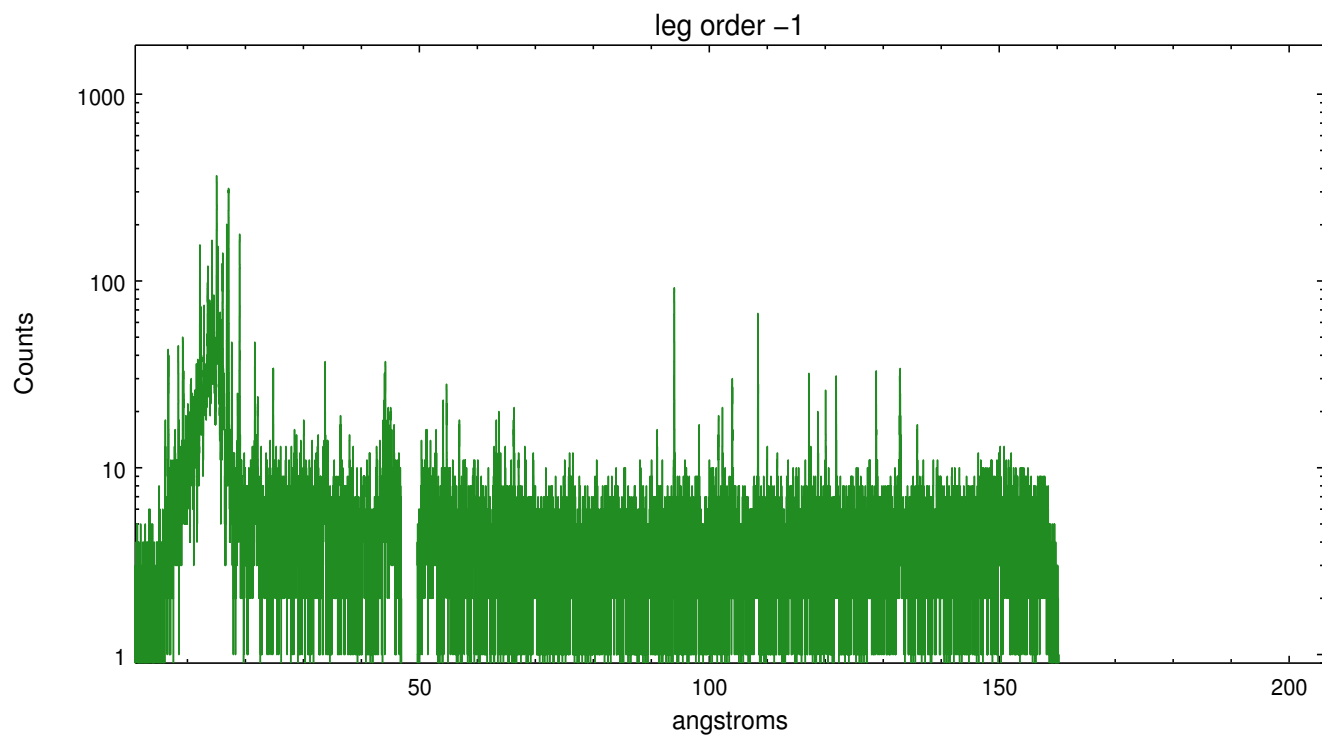


### 3 Gratings

#### 3.1 LETG Arm



LETG Zero Order



# A Summary

## A.1 Status

V&V Scientist	Joy Nichols
V&V Date (YYYY-MM-DD)	2012.08.14
V&V Edition	1
V&V Disposition and Status	OK
V&V Charge Time	30.1811264

## A.2 Comments