

V&V Reference Report

L2 ASCDS Version : 8.4.3.1

Observation 7042 - L2 Version 2
Chandra X-Ray Center

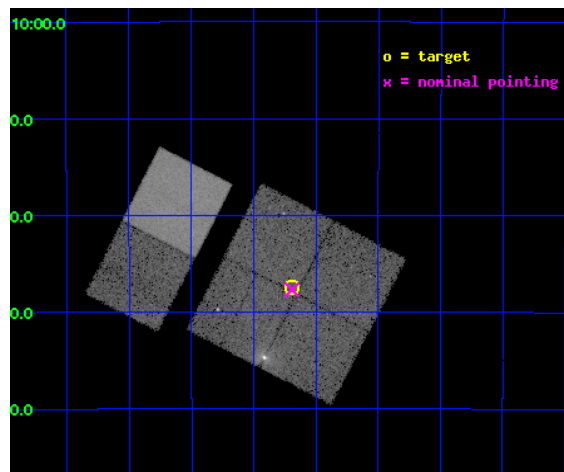
L2 Processing Date : Apr 4 2012

Contents

1	Front	2
2	OBI	3
2.1	OBI	3
2.1.1	Images	3
2.1.2	Bias	3
2.1.3	Parameters	4
2.1.4	Events	4
2.2	Compared Parameters	5
2.3	Aspect	6
2.4	Star Slots	9
2.4.1	Slot 3	9
2.4.2	Slot 4	10
2.4.3	Slot 5	11
2.4.4	Slot 6	12
2.4.5	Slot 7	13
2.5	FID Slots	14
2.5.1	Slot 0	14
2.5.2	Slot 1	15
2.5.3	Slot 2	16
A	Summary	17
A.1	Status	17
A.2	Comments	17

1 Front

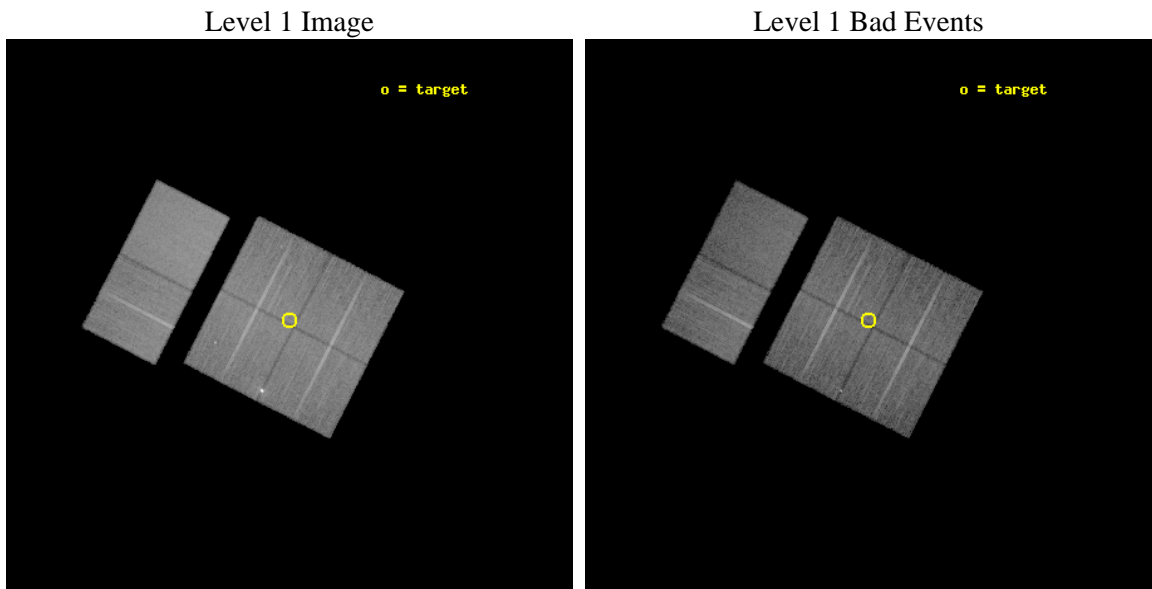
seq_num	900458	Sequence number
obs_id	7042	Observation id
title	A Legacy Study of Stellar Life Cycles at the Galactic Center	Propo
observer	Dr. Michael Muno	Principal investigator
object	Deep GCS 12	Source name
dtcycle	0	
cycle	P	events from which exps? Prim/Second/Both
ra_targ	265.922917	Observer's specified target RA [deg]
dec_targ	-29.623806	Observer's specified target Dec [deg]
ra_nom	265.92332930531	Nominal RA [deg]
dec_nom	-29.628389376318	Nominal Dec [deg]
roll_nom	297.20888907255	Nominal Roll [deg]
revision	2	Processing version of data
ontime	14633.599945486	Sum of GTIs [s]
livetime	14448.30049168	Livetime [s]
ontime0	14633.599945486	Sum of GTIs [s]
ontime1	14633.599945486	Sum of GTIs [s]
ontime2	14633.599945486	Sum of GTIs [s]
ontime3	14633.599945486	Sum of GTIs [s]
ontime6	14630.359054804	Sum of GTIs [s]
ontime7	14633.599945486	Sum of GTIs [s]
l2events	172871	Number of level 2 events



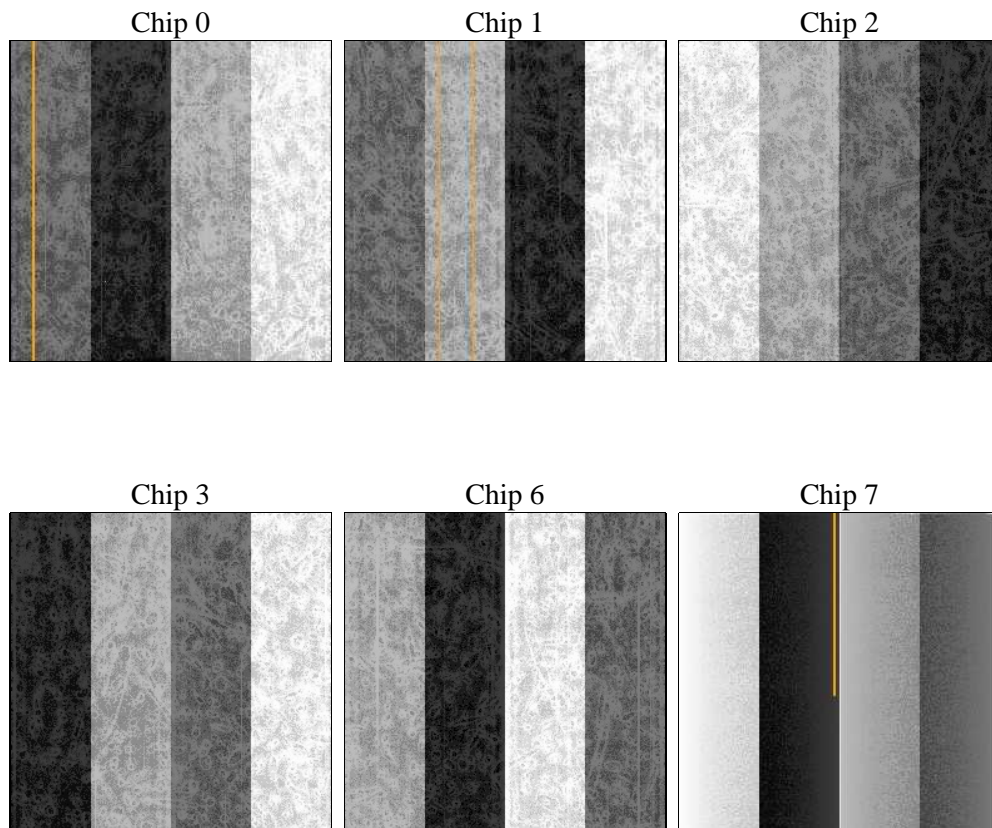
2 OBI

2.1 OBI

2.1.1 Images



2.1.2 Bias



2.1.3 Parameters

obi_num	0	Obi number	sched_exp_time	14500.000000	[s] Scheduled observation exposure time
ascdsver	8.4.3.1	Processing system revision	ontime	14633.599945486	Sum of GTIs [s]
caldsver	4.4.9	 	ontime0	14633.599945486	Sum of GTIs [s]
date	2012-04-04T04:25:01	Date and time of file creation	ontime1	14633.599945486	Sum of GTIs [s]
revision	2	Processing version of data	ontime2	14633.599945486	Sum of GTIs [s]
			ontime3	14633.599945486	Sum of GTIs [s]
			ontime6	14630.359054804	Sum of GTIs [s]
			ontime7	14633.599945486	Sum of GTIs [s]
			l1events	914752	Number of level 1 events

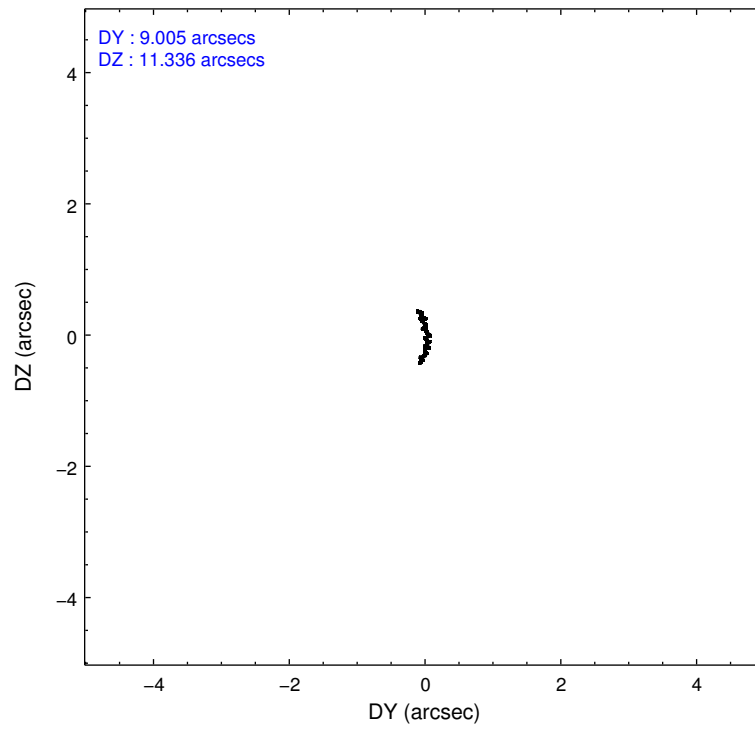
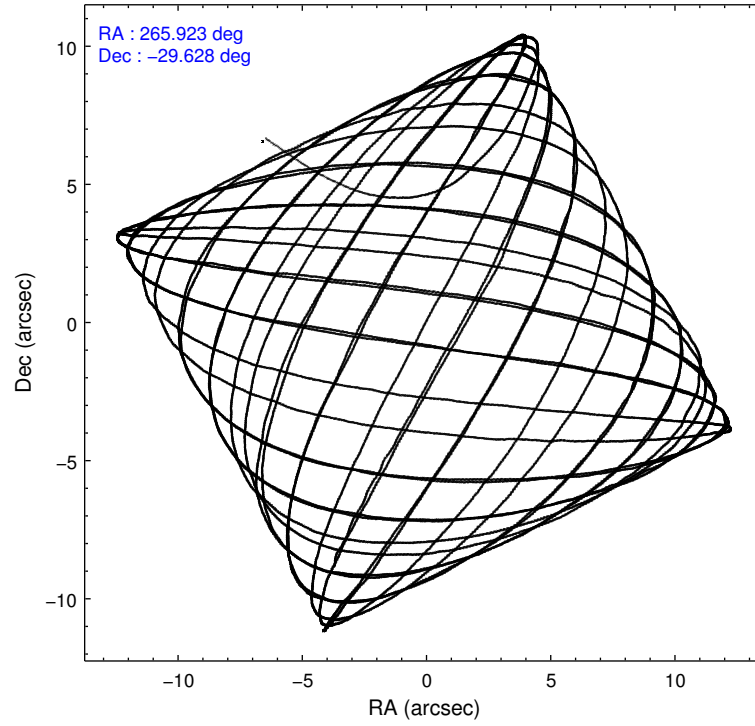
2.1.4 Events

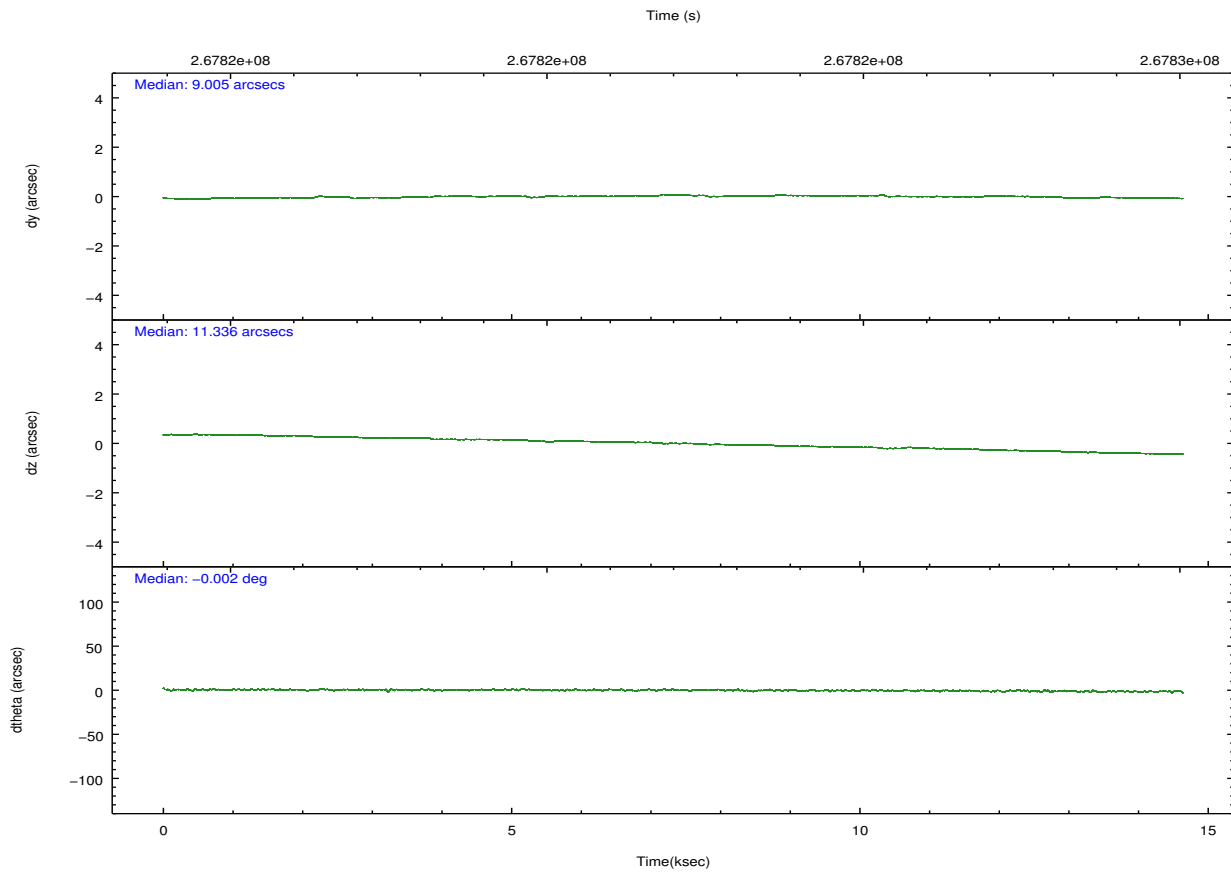
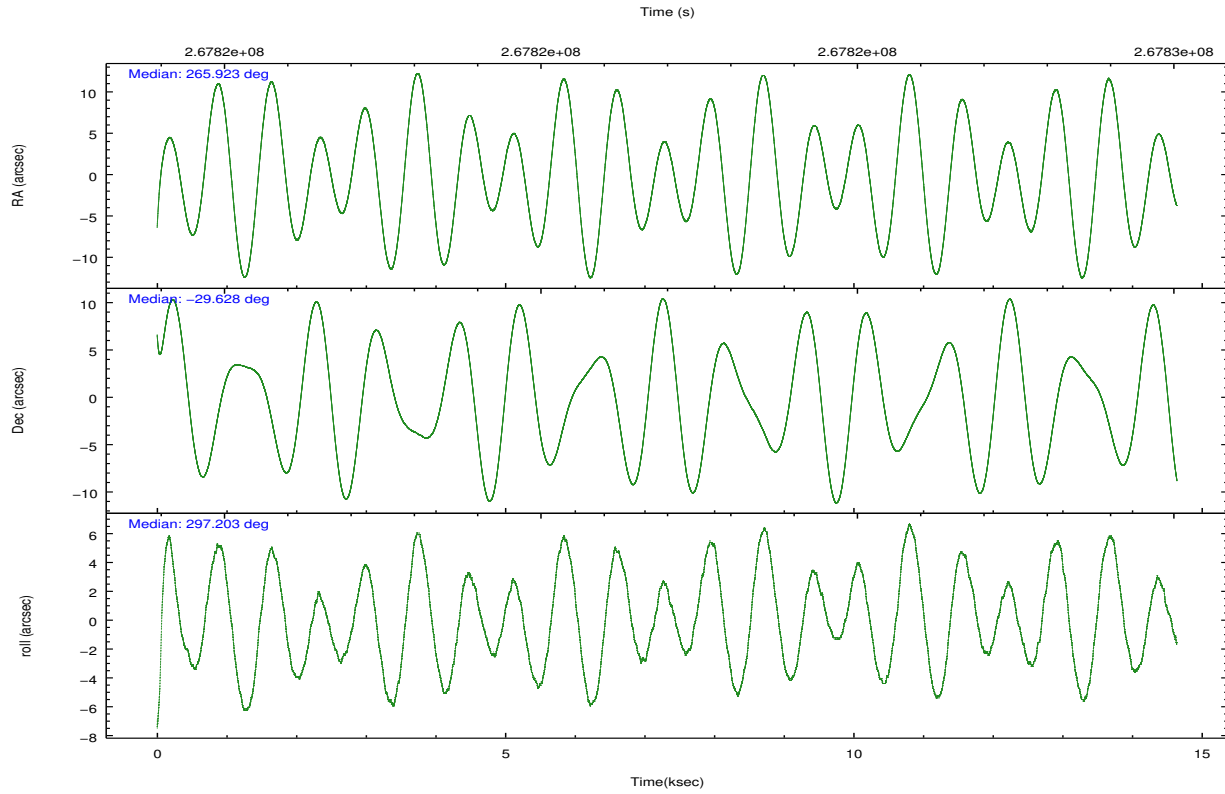
	ccd 0	ccd 1	ccd 2	ccd 3	ccd 6	ccd 7		ccd 0	ccd 1	ccd 2	ccd 3	ccd 6	ccd 7
level 1 events	139947	131746	152364	144571	152449	193675	grade 0 events	13907	8719	13624	9832	7789	7651
rejected events	113564	112122	127678	124806	134344	113161		9%	6%	8%	6%	5%	3%
rejected %	81%	85%	83%	86%	88%	58%	grade 1 events	160	89	162	117	88	193
								0%	0%	0%	0%	0%	0%
							grade 2 events	5133	4349	4508	3680	3948	16985
								3%	3%	2%	2%	2%	8%
							grade 3 events	2061	1772	1912	1780	1664	7225
								1%	1%	1%	1%	1%	3%
							grade 4 events	2061	1821	1958	1821	1664	7241
								1%	1%	1%	1%	1%	3%
							grade 5 events	5496	6145	5674	6326	6752	18296
								3%	4%	3%	4%	4%	9%
							grade 6 events	3799	3551	3399	3181	3592	43854
								2%	2%	2%	2%	2%	22%
							grade 7 events	107330	105300	121127	117834	126952	92230
								76%	79%	79%	81%	83%	47%

2.2 Compared Parameters

Parameter	Planned	Actual	Parameter	Planned	Actual
Instrument	ACIS	ACIS	Obspar format version number	7	7
Detector	ACIS-012367	ACIS-012367	Obspar file type	PREDICTED	ACTUAL
Grating	NONE	NONE	Obspar update status	NONE	UPDATED
Data mode	FAINT	FAINT	Number of optional ACIS chips dropped	0	0
Observation mode	POINTING	POINTING	On-chip summing requested	N	N
[deg] Pointing RA	265.896761	265.9233293053076	Subarray requested	NONE	NONE
[deg] Pointing Dec	-29.613687	-29.62838937631789	Alternating exposures requested	N	N
[deg] Pointing Roll	296.987078	297.2088890725492	[s] Primary exposure time	0.000000	3.2
[mm] SIM focus pos	-0.782348	-0.7809083437167272			
[mm] SIM defocus	0	0.001439871863259334			
[mm] SIM translation stage pos	-233.592463	-233.5874344608287			
[mm] SIM translation stage offset	0	-0.005018542100998502			
[s] Observation start time (MET)	267814809.184000	267813532.83068			
Observation start date	2006-06-27T16:59:04	2006-06-27T16:38:52			
[s] Observation end time (MET)	267829309.184000	267830182.41896			
Observation end date	2006-06-27T21:00:44	2006-06-27T21:16:22			
Read mode	TIMED	TIMED			

2.3 Aspect



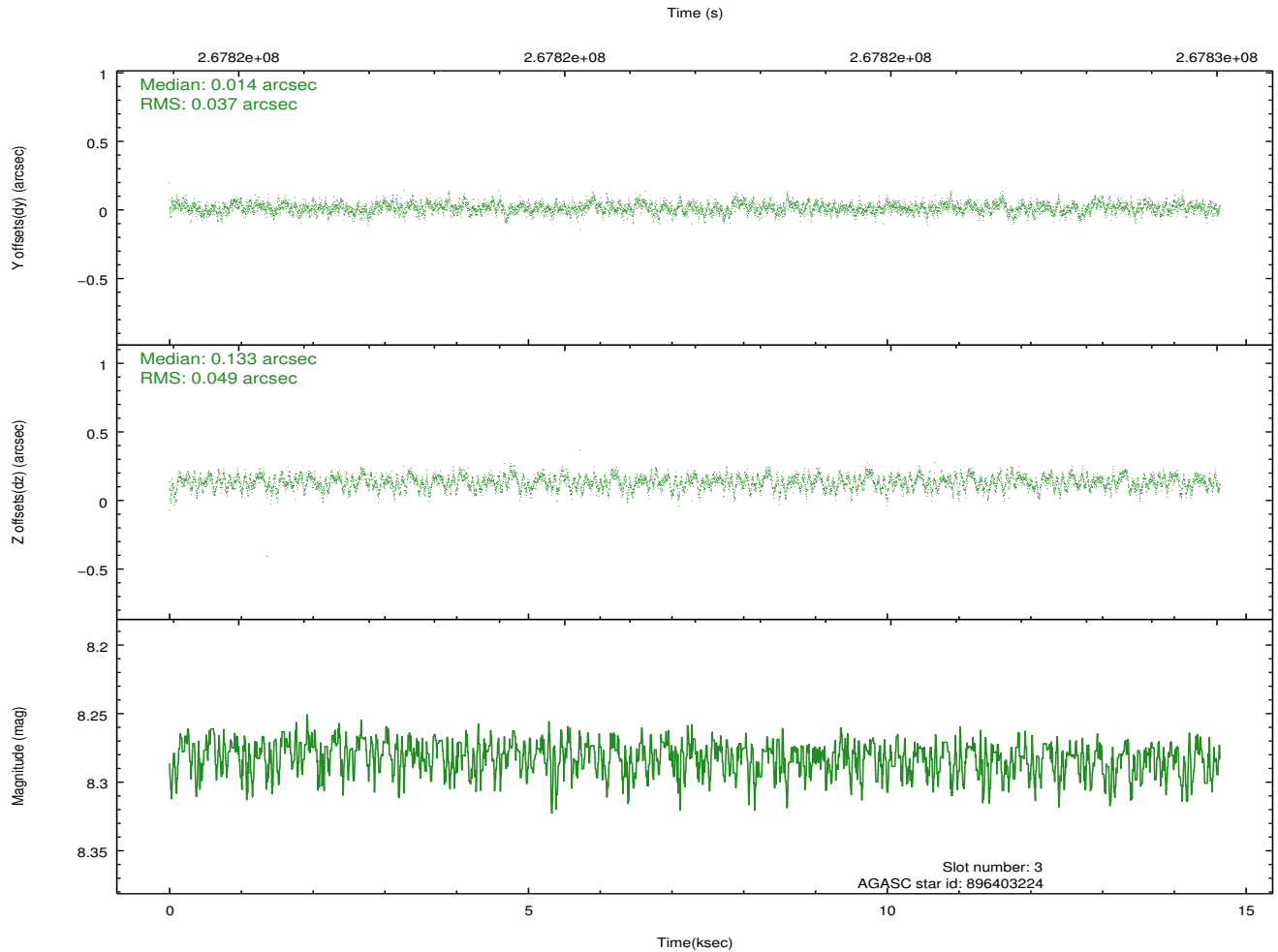
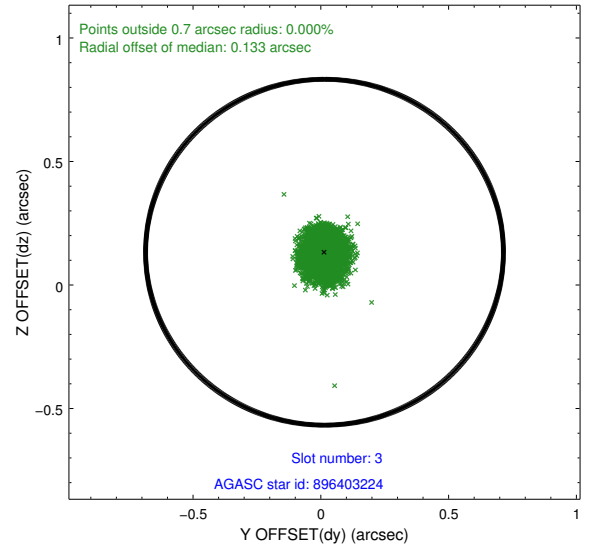
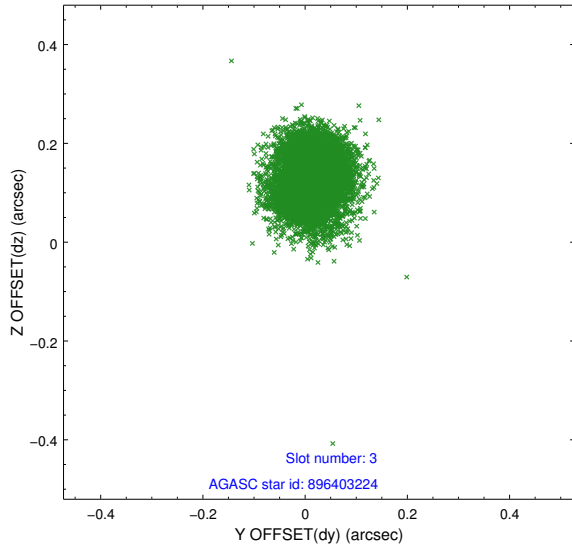


Slot Statistics

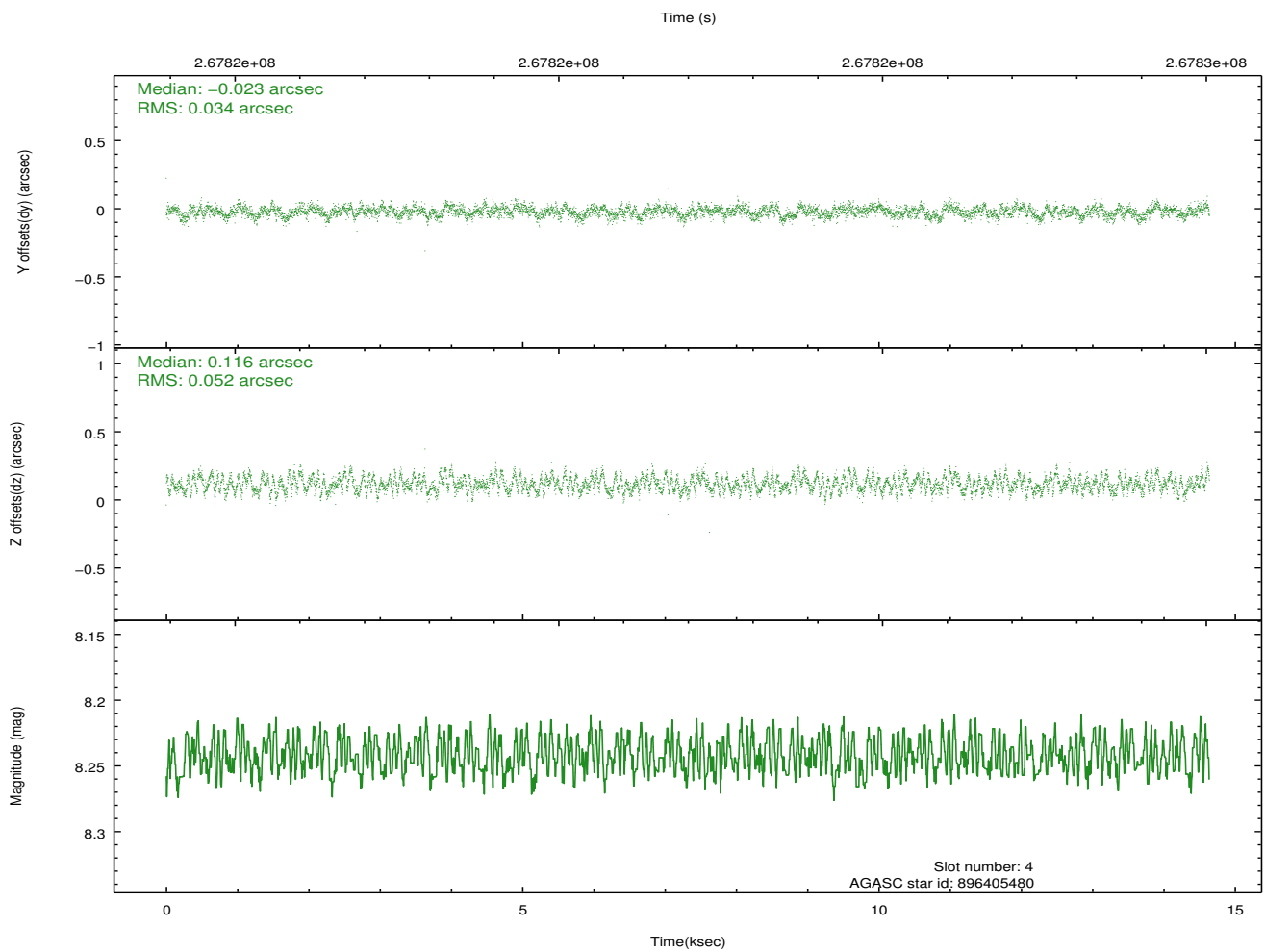
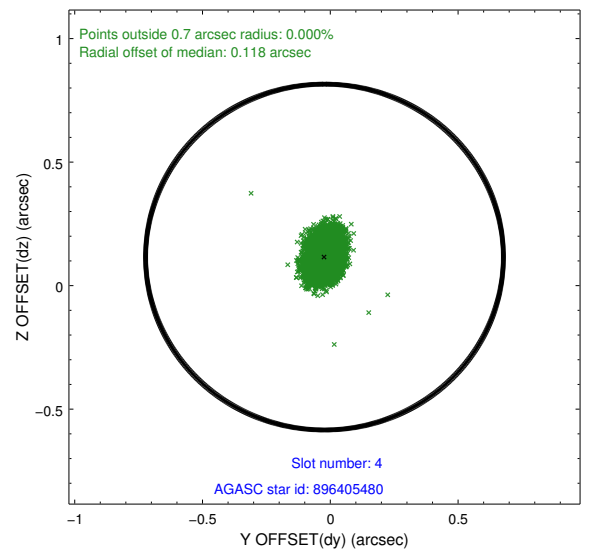
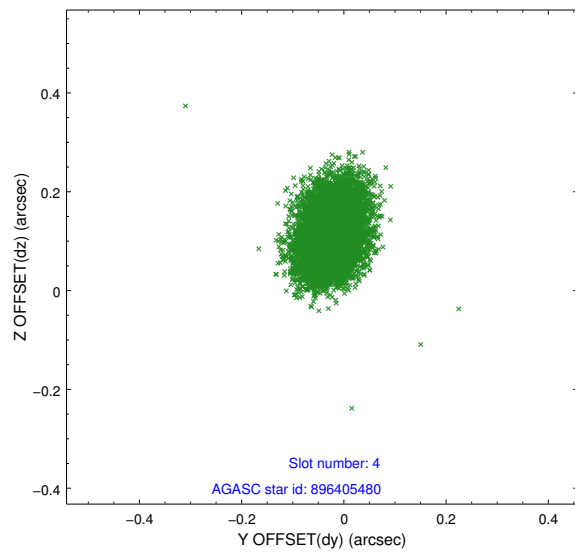
slot	status	id	mag	n_pts	med_dy	med_dz	dr1	dr2	ra	dec	mean_y	mean_z
0	FID	ACIS-I-1	7.24	3571	0.093	-0.028	0.007	0.013	0.000000	0.000000	930.72	-834.86
1	FID	ACIS-I-2	7.14	3570	-0.047	-0.035	0.010	0.019	0.000000	0.000000	-763.33	-841.46
2	FID	ACIS-I-5	7.22	3571	-0.139	0.135	0.009	0.017	0.000000	0.000000	-1817.92	1062.63
3	GUIDE	896403224	8.28	7136	0.014	0.133	0.064	0.105	265.612825	-29.438915	-963.00	-508.25
4	GUIDE	896405480	8.24	7141	-0.023	0.116	0.066	0.106	265.220460	-29.599691	-999.61	-1866.45
5	GUIDE	896537776	7.53	7143	-0.085	-0.134	0.057	0.093	266.655684	-29.665673	1251.06	2026.75
6	GUIDE	896540808	7.49	7142	-0.073	-0.099	0.046	0.072	265.985401	-29.308604	-851.87	746.39
7	GUIDE	966924920	8.09	7138	0.168	-0.009	0.065	0.105	265.875401	-30.176961	1777.41	-979.22

2.4 Star Slots

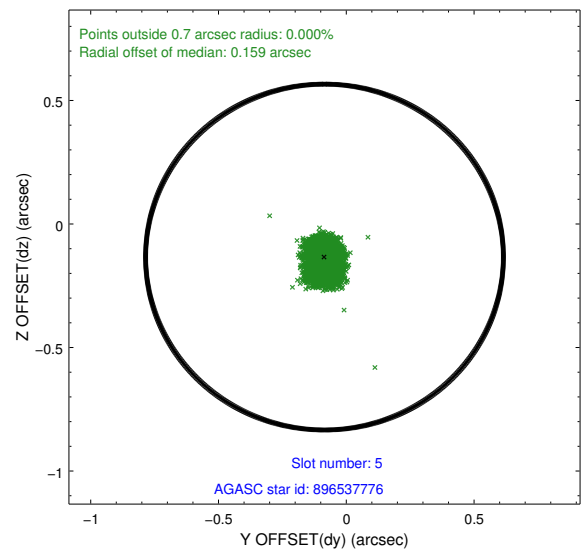
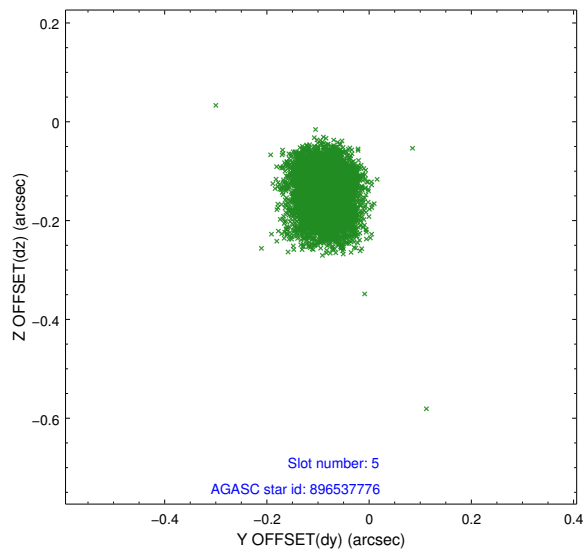
2.4.1 Slot 3



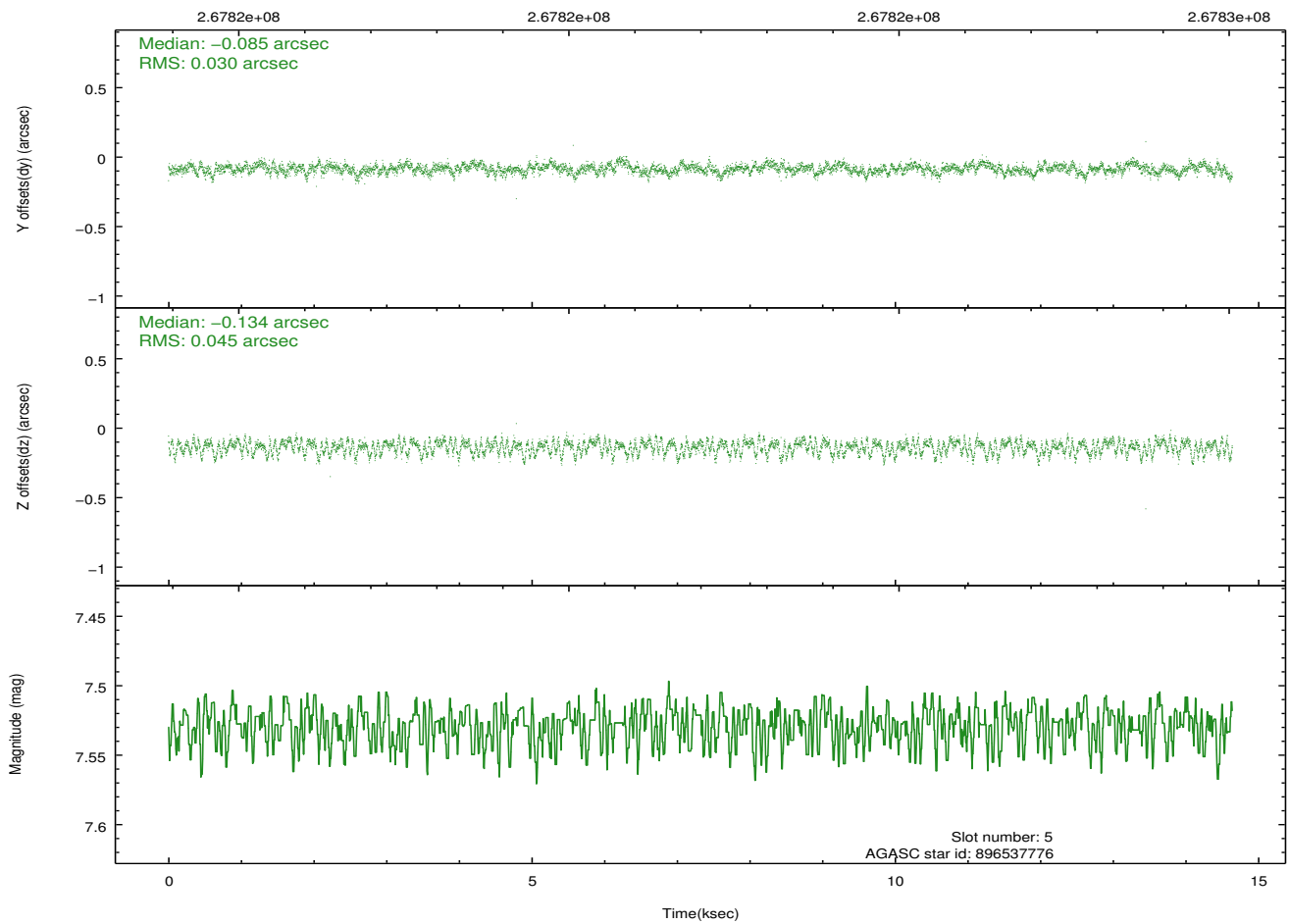
2.4.2 Slot 4



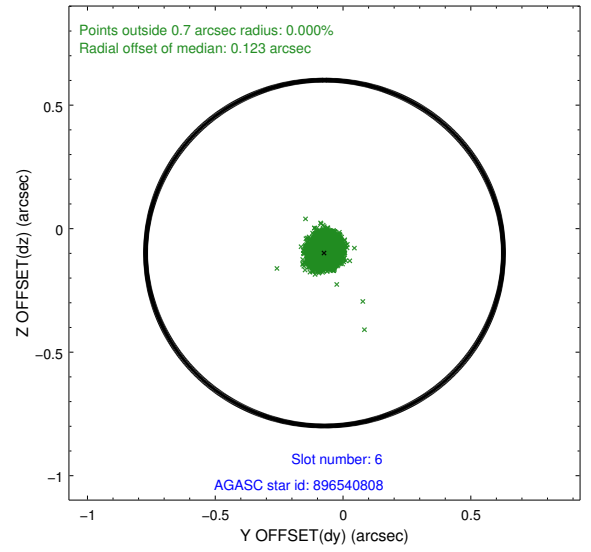
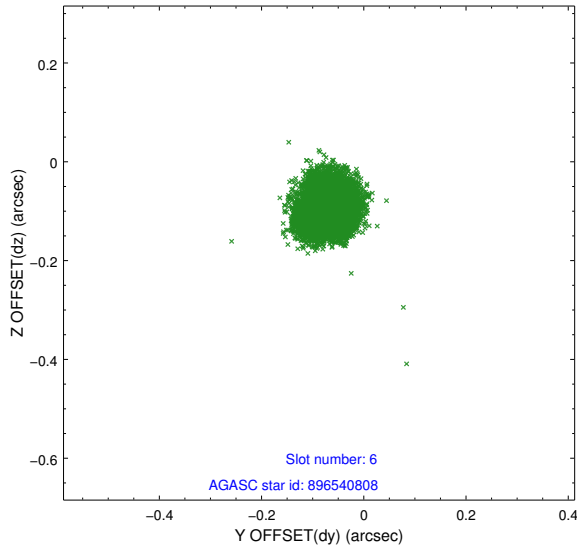
2.4.3 Slot 5



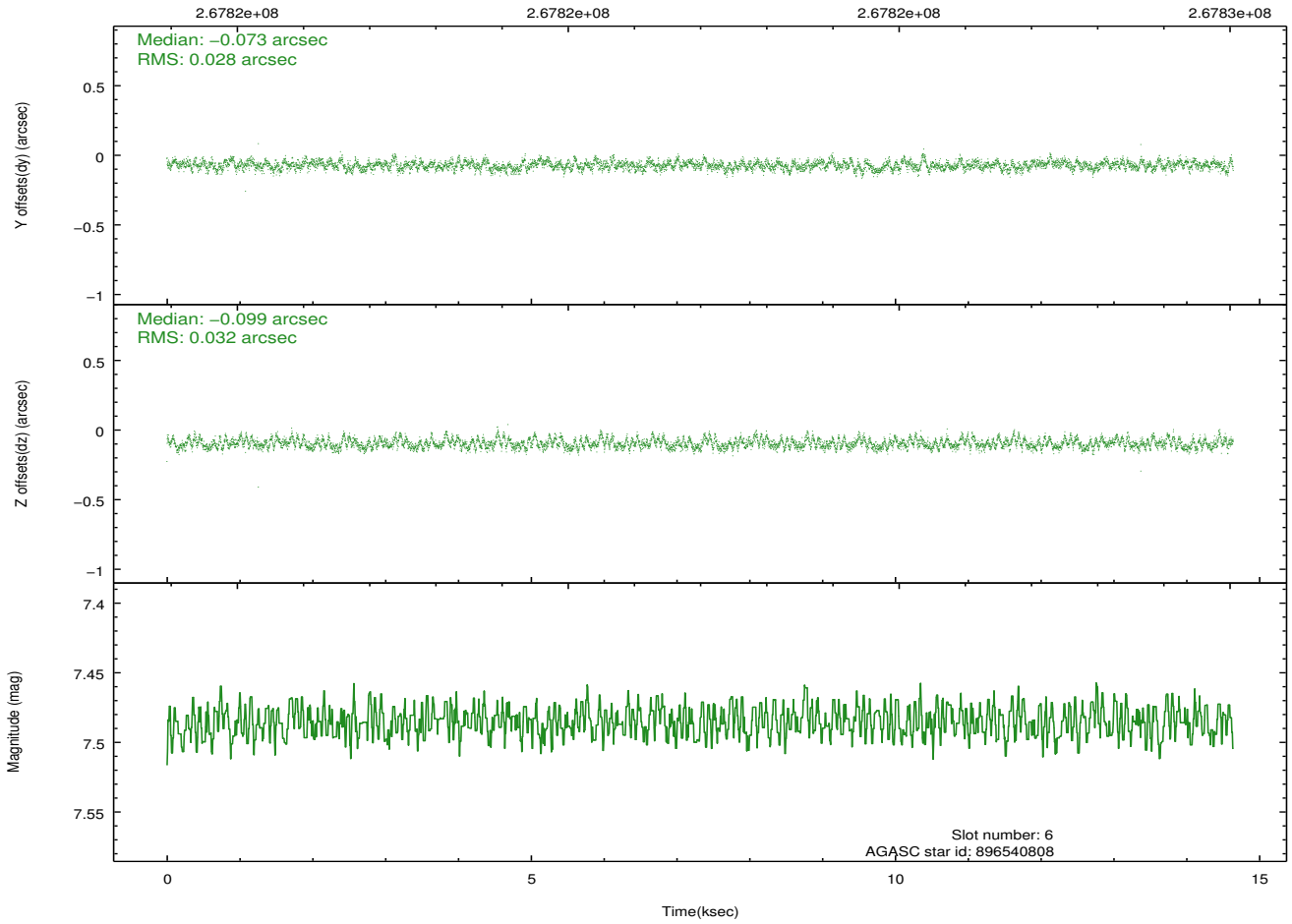
Time (s)



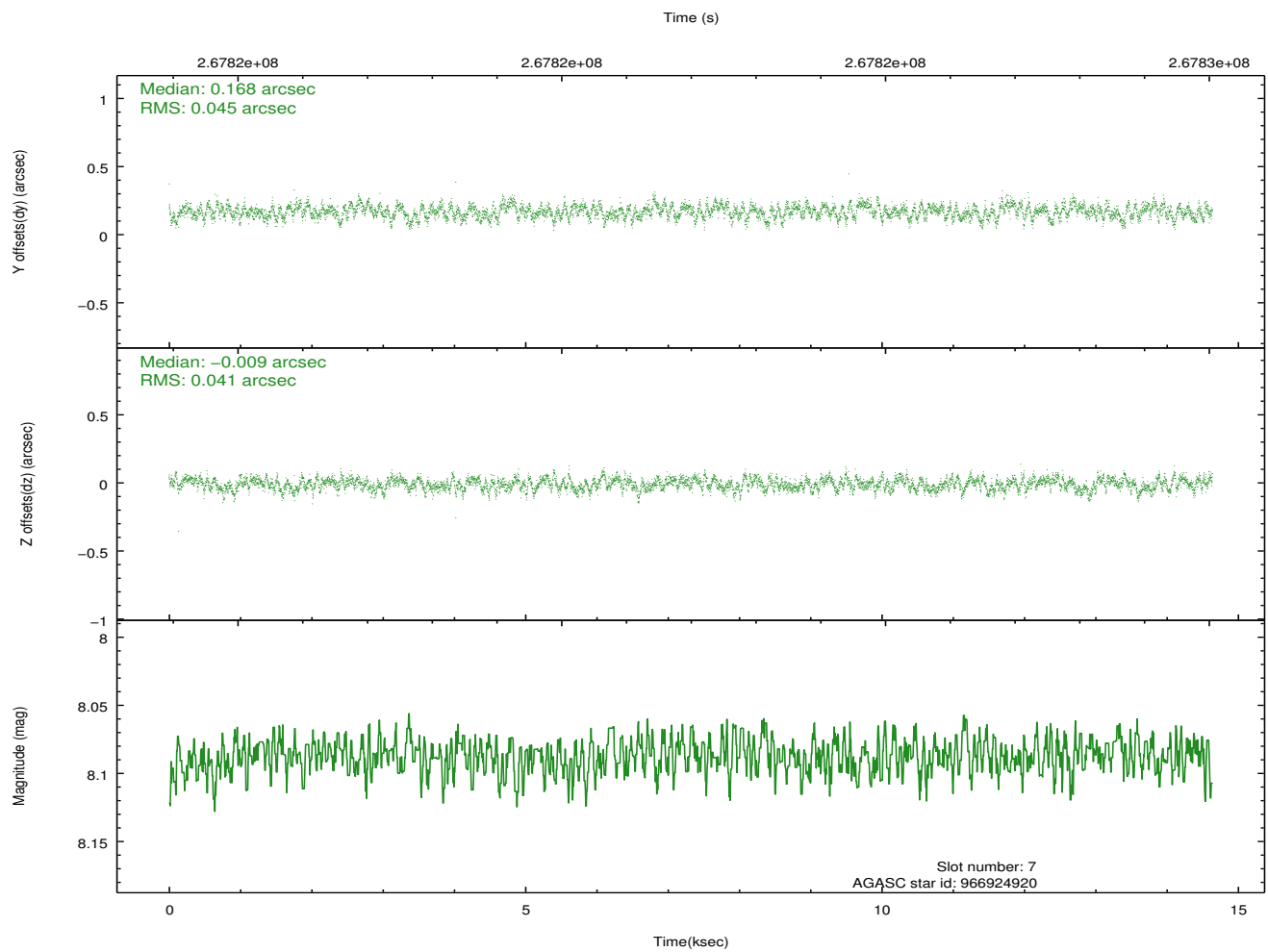
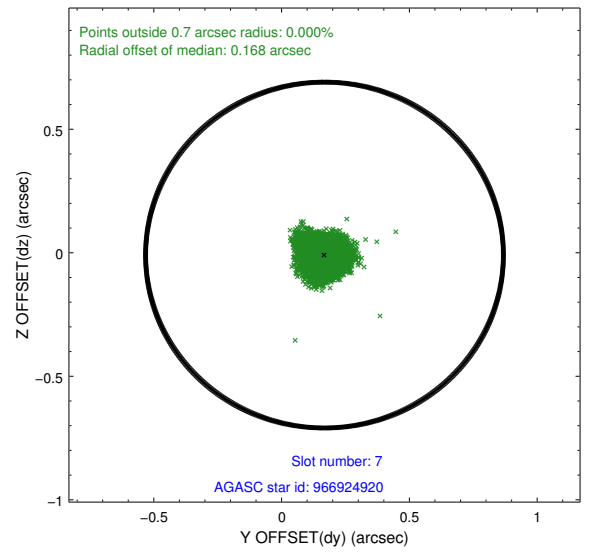
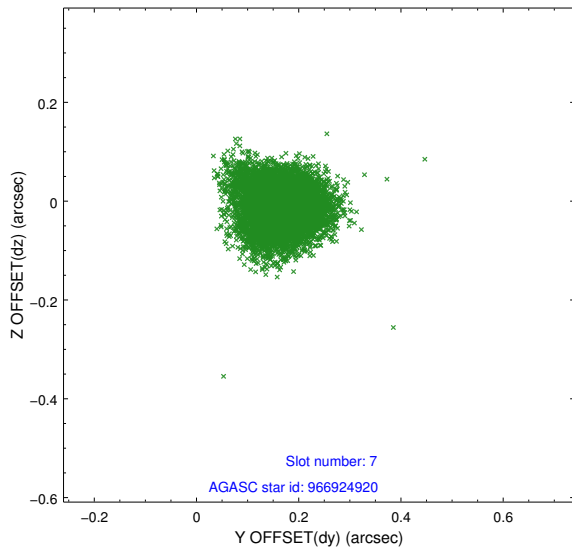
2.4.4 Slot 6



Time (s)

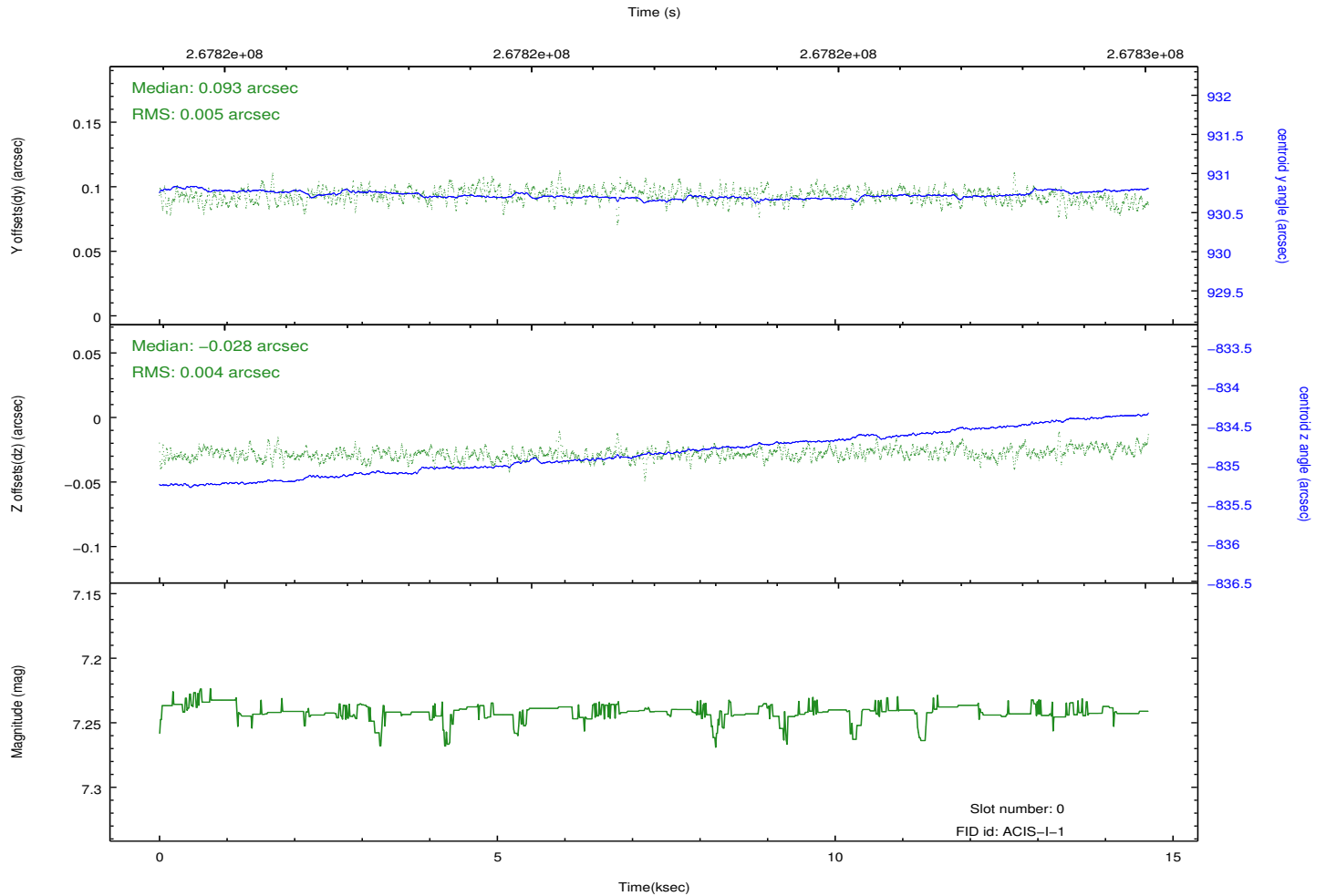
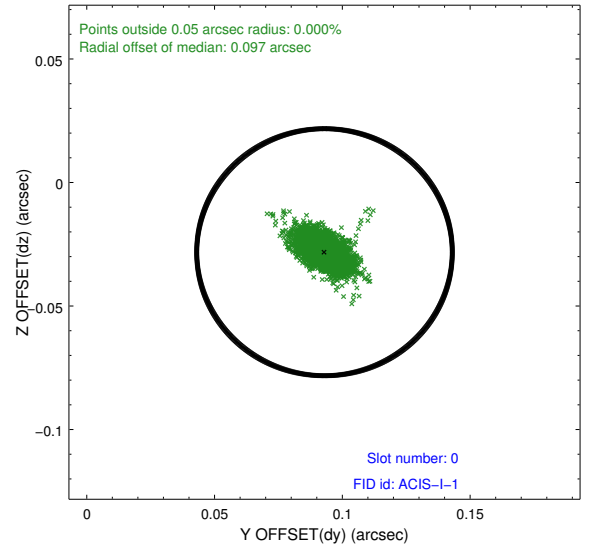
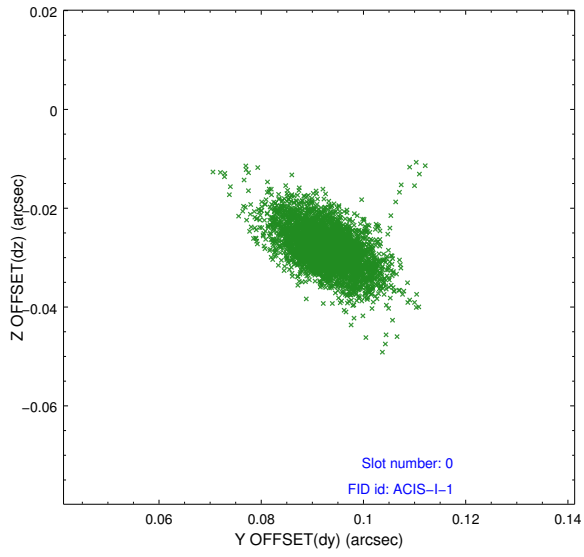


2.4.5 Slot 7

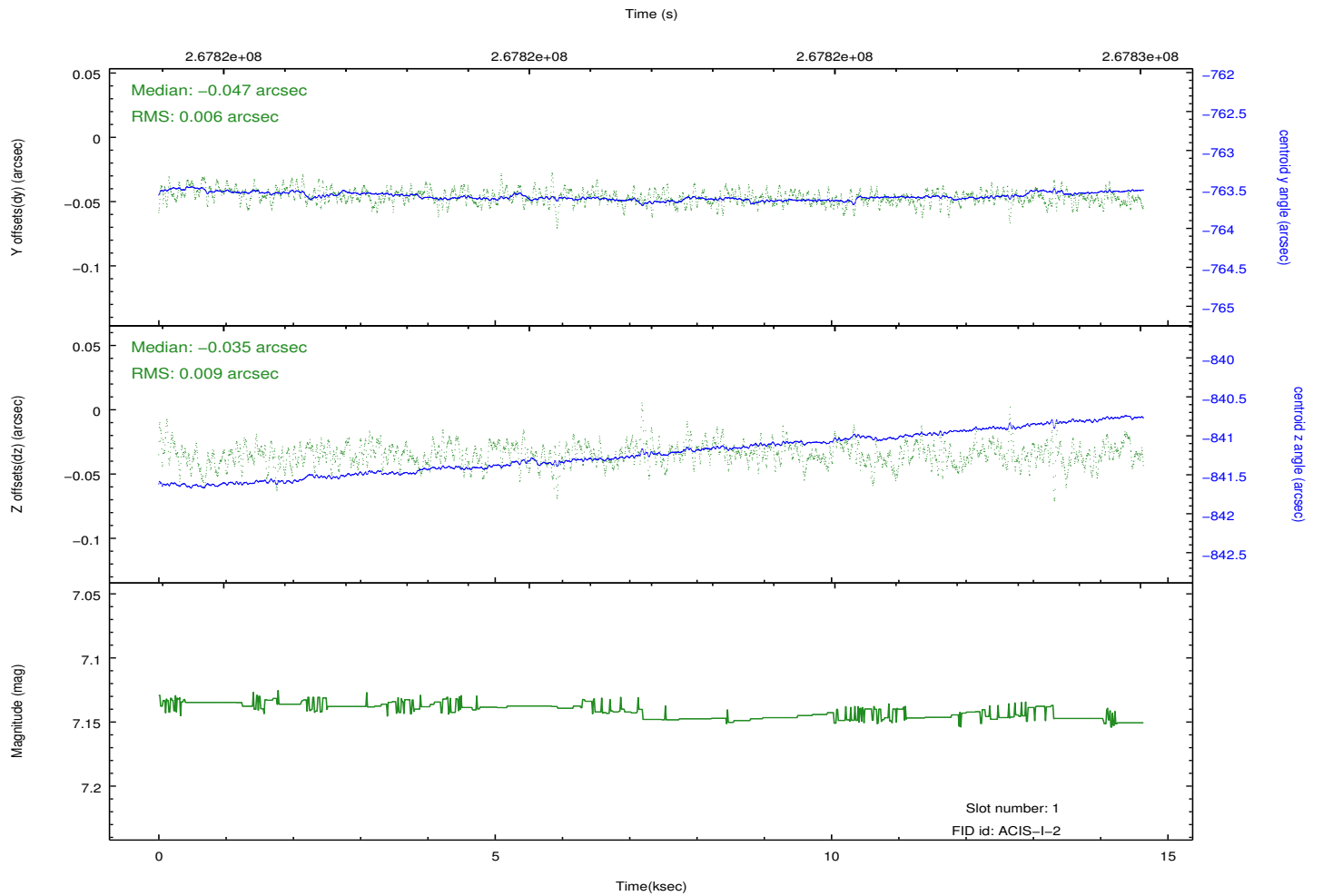
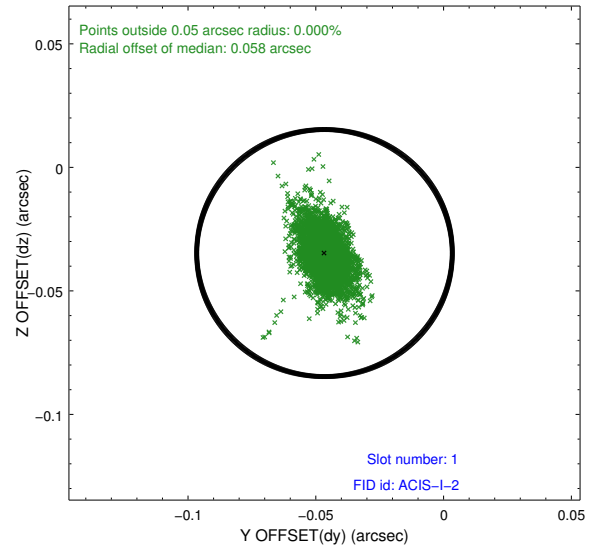
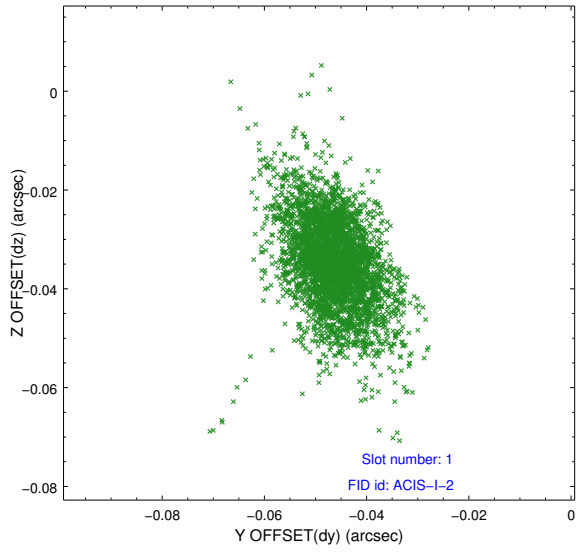


2.5 FID Slots

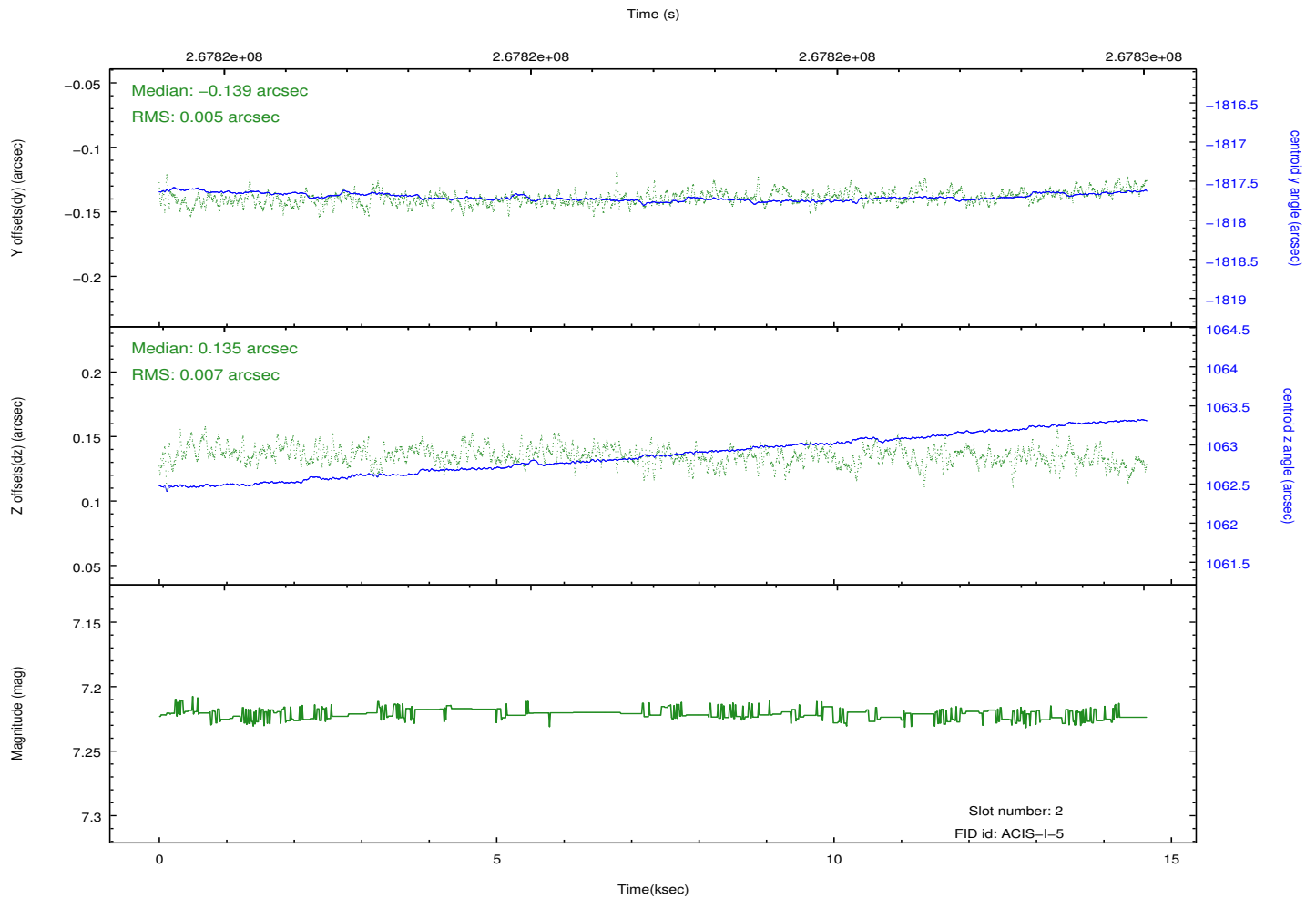
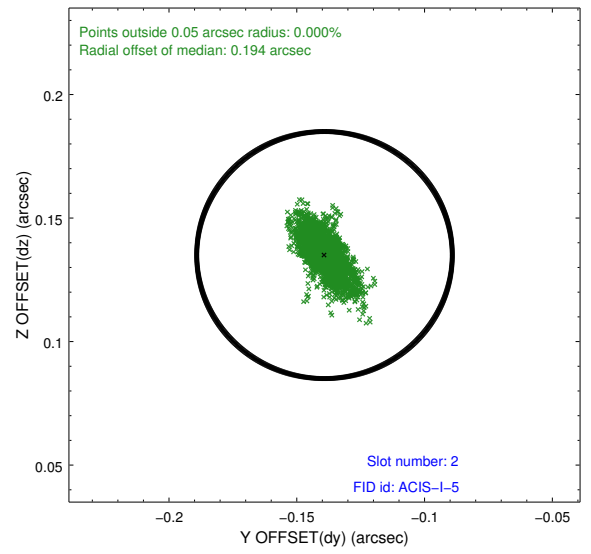
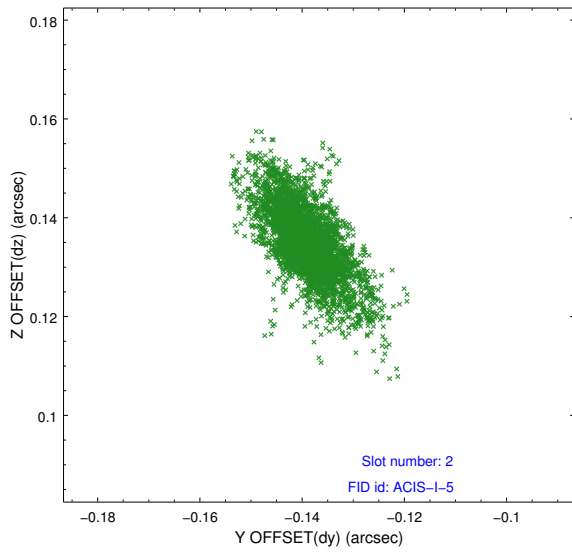
2.5.1 Slot 0



2.5.2 Slot 1



2.5.3 Slot 2



A Summary

A.1 Status

V&V Scientist	Jen Lauer
V&V Date (YYYY-MM-DD)	2012.04.05
V&V Edition	1
V&V Disposition and Status	OK
V&V Charge Time	14.6335999

A.2 Comments