

V&V Reference Report

L2 ASCDS Version : 8.4.3

Observation 7052 - L2 Version 5
Chandra X-Ray Center

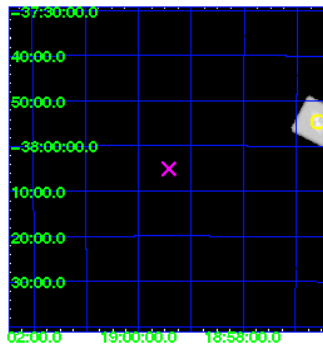
L2 Processing Date : Aug 11 2012

Contents

1	Front	2
2	OBI	3
2.1	OBI	3
2.1.1	Images	3
2.1.2	Parameters	4
2.1.3	Events	4
2.2	Compared Parameters	5
2.3	Aspect	6
2.4	Star Slots	9
2.4.1	Slot 3	9
2.4.2	Slot 4	10
2.4.3	Slot 5	11
2.4.4	Slot 6	12
2.4.5	Slot 7	13
2.5	FID Slots	14
2.5.1	Slot 0	14
2.5.2	Slot 1	15
A	Summary	16
A.1	Status	16
A.2	Comments	16

1 Front

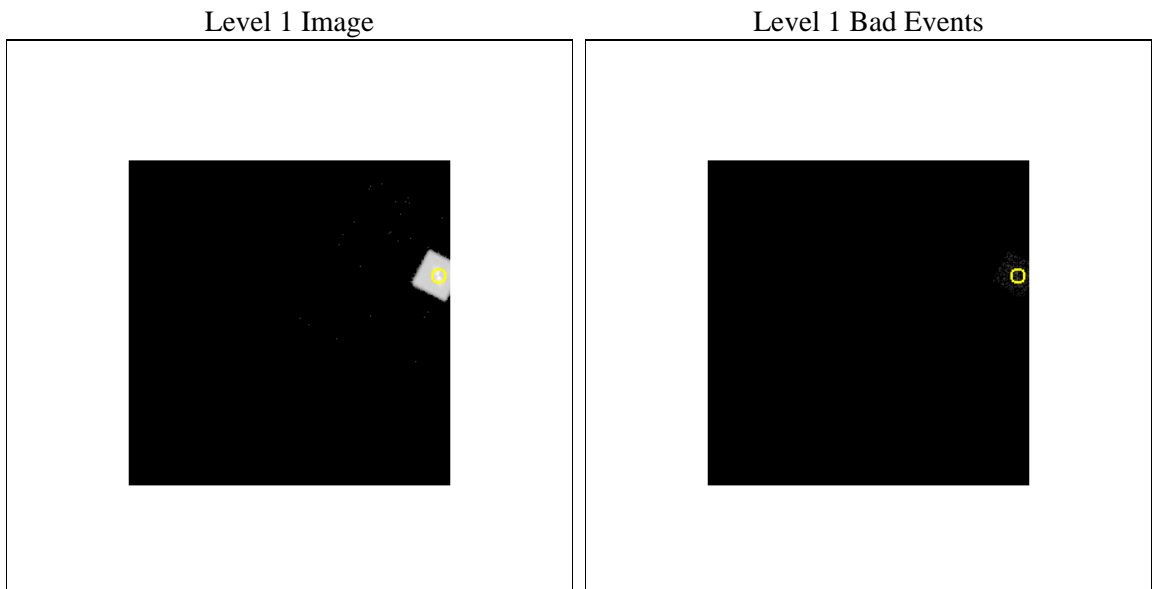
seq_num	990007	Sequence number
obs_id	7052	Observation id
title	AO7 Calibration Observations of the ACIS charged particle background	
observer	Dr. CXC Calibration	Principal investigator
object	RXJ1856.5-3754	Source name
ra_targ	284.147083	Observer's specified target RA [deg]
dec_targ	-37.909611	Observer's specified target Dec [deg]
ra_nom	284.85520752458	Nominal RA [deg]
dec_nom	-38.08508226974	Nominal Dec [deg]
roll_nom	72.28978953394	Nominal Roll [deg]
revision	5	Processing version of data
ontime	46313.602166265	[s]
livetime	46087.41173157	Ontime multiplied by DTCOR
l2events	122067	Number of level 2 events



2 OBI

2.1 OBI

2.1.1 Images



2.1.2 Parameters

obi_num	0	Obi number	sched_exp_time	46700.000000	[s] Scheduled observation exposure time
ascdsver	8.4.5	Processing system revision	ontime	46379.202166259	[s]
caldsver	4.5.1.1	 	l1events	163711	Number of level 1 events
date	2012-08-11T08:27:37	Date and time of file creation			
revision	5	Processing version of data			

2.1.3 Events

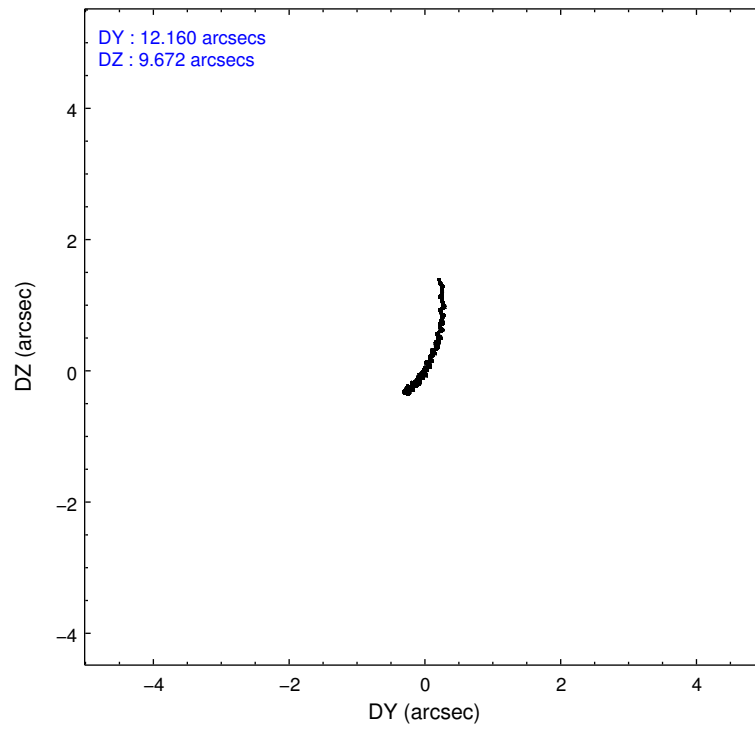
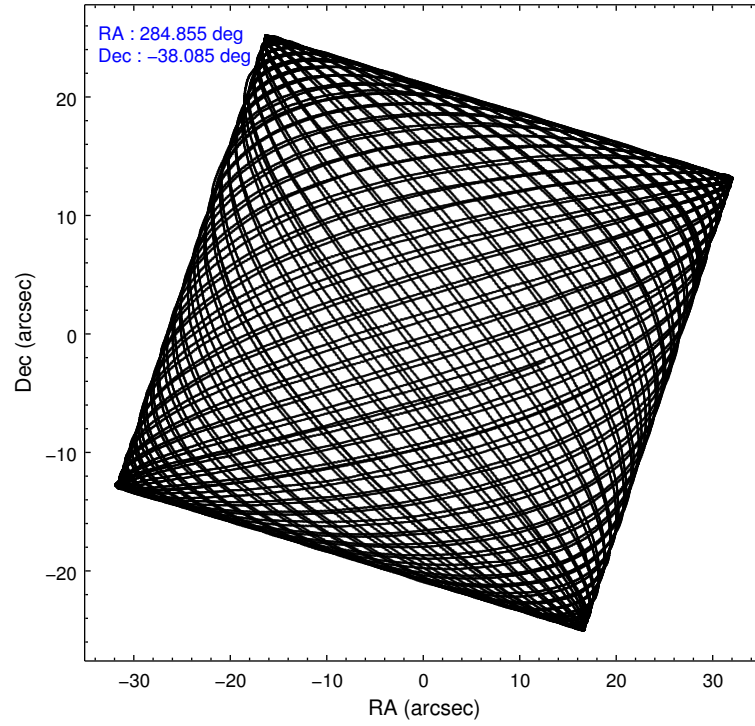
Level 1 Events

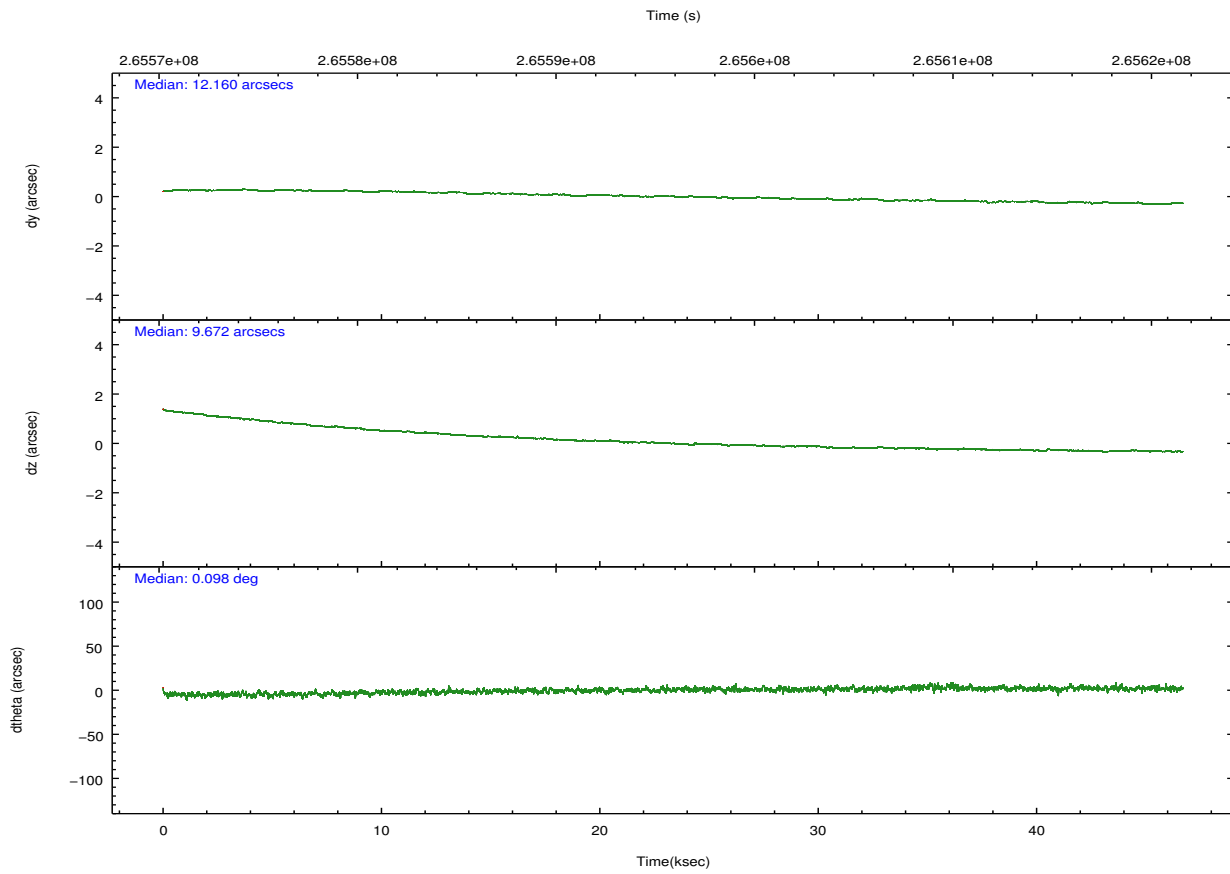
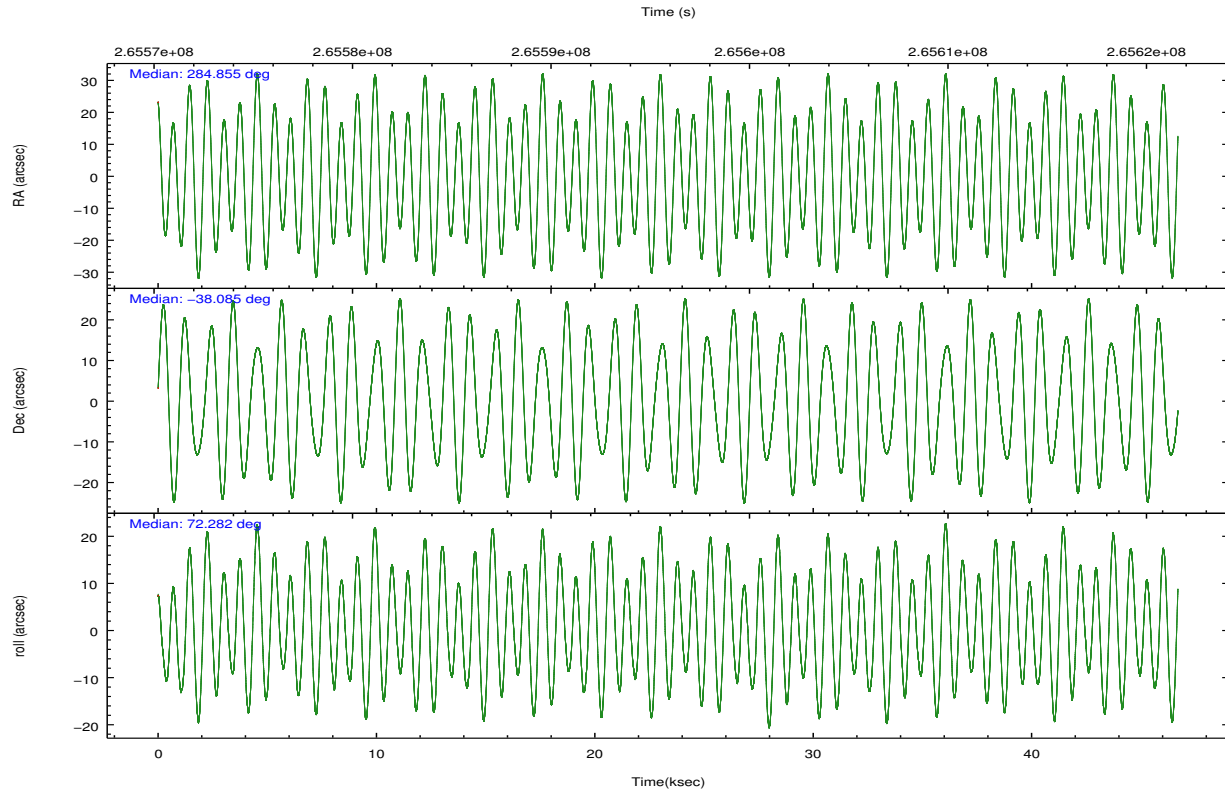
	segment 0
level 1 events	163711
rejected events	1330
rejected %	0%

2.2 Compared Parameters

Parameter	Planned	Actual	Parameter	Planned	Actual
Instrument	HRC	HRC	Obspar format version number	7	7
Detector	HRC-I	HRC-I	Obspar file type	PREDICTED	ACTUAL
Grating	NONE	NONE	Obspar update status	OVERRIDE	OVERRIDE
Data mode	NEXT_IN_LINE	NEXT_IN_LINE			
Observation mode	POINTING	POINTING			
[deg] Pointing RA	284.8551969501669	284.8552075245792			
[deg] Pointing Dec	-38.08510849571245	-38.08508226974021			
[deg] Pointing Roll	72.28978299208988	72.28978953393997			
[s] Window start time (MET)	262828865.184000	262828865.184000			
[s] Window stop time (MET)	265852865.184000	265852865.184000			
[mm] SIM focus pos	-1.038866356238299	-1.038866356238299			
[mm] SIM defocus	0.00142623211714632	0.00142623211714632			
[mm] SIM translation stage pos	51.9960404362608	51.9960404362608			
[mm] SIM translation stage offset	74.989453869027	74.989453869027			
[s] Observation start time (MET)	265572547.184	265572547.184			
Observation start date	2006-06-01T18:08:02	2006-06-01T18:09:07			
[s] Observation end time (MET)	265619247.184	265619247.184			
Observation end date	2006-06-02T07:06:22	2006-06-02T07:07:27			

2.3 Aspect



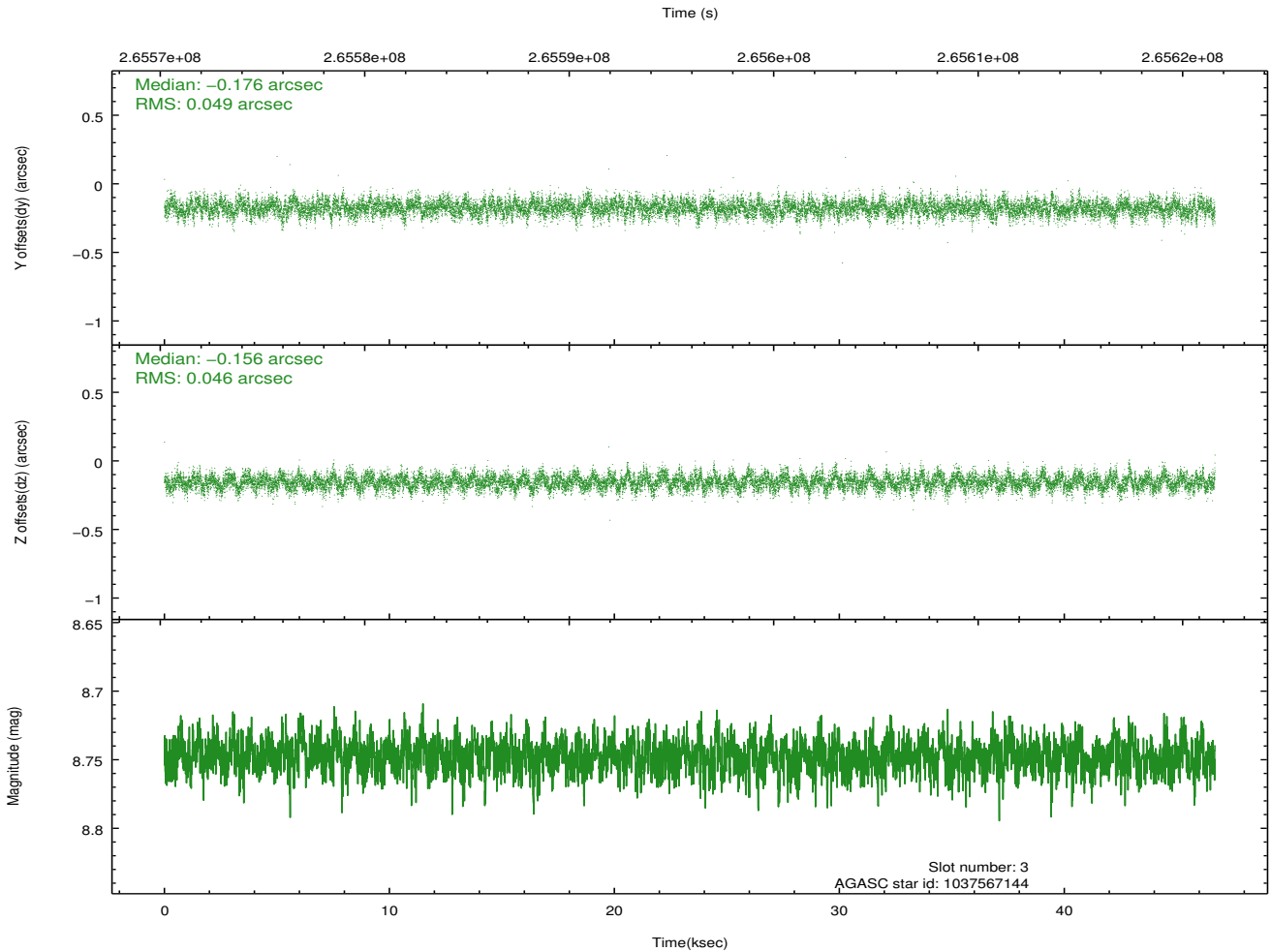
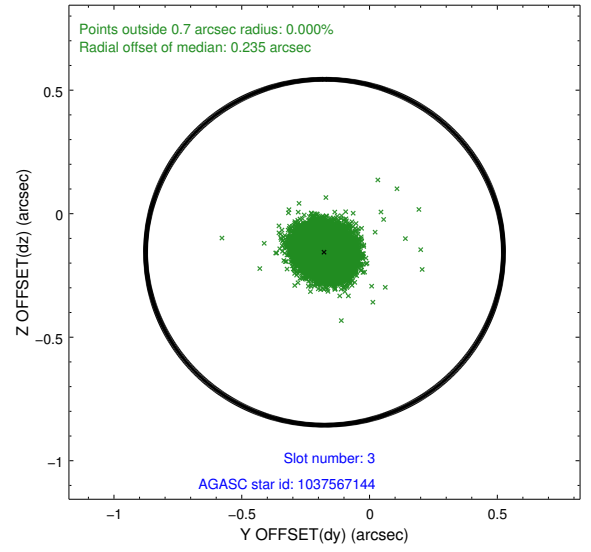
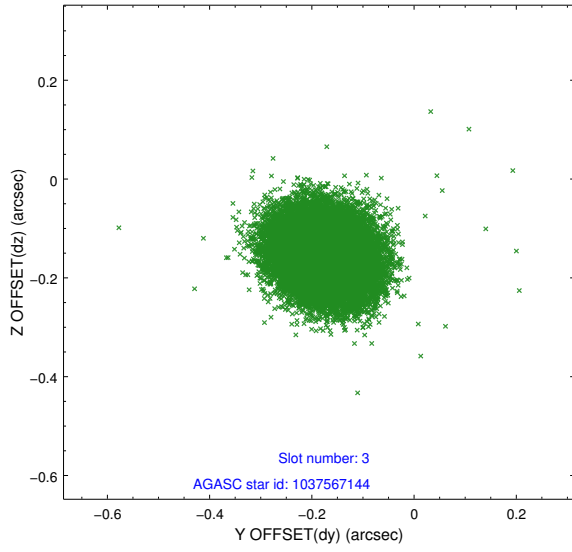


Slot Statistics

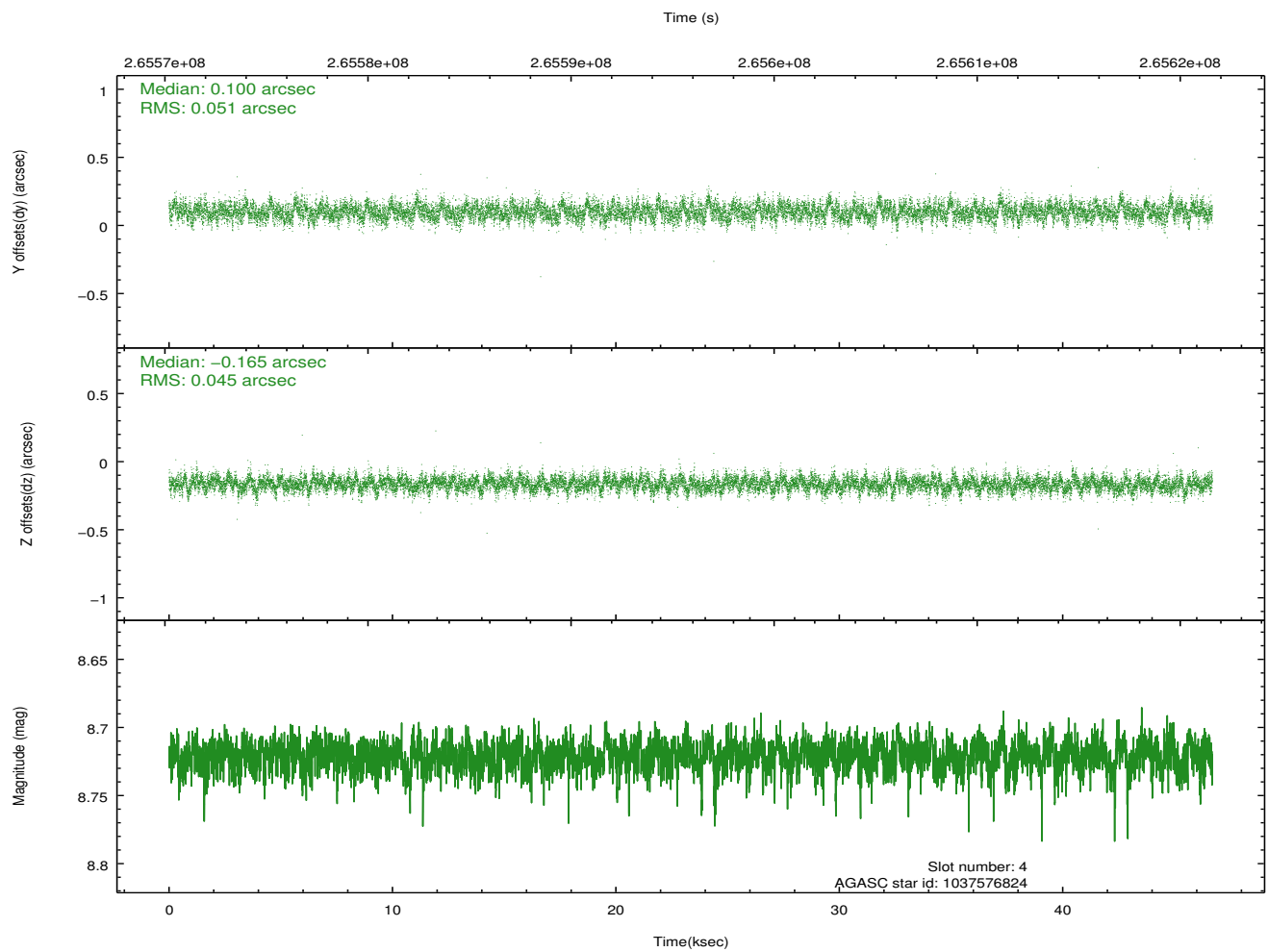
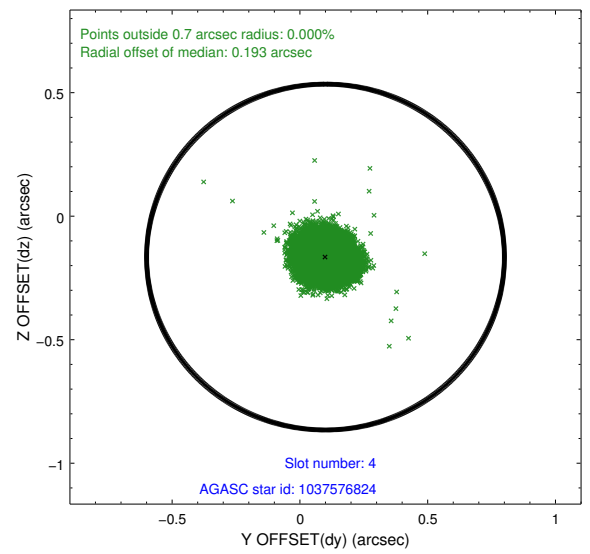
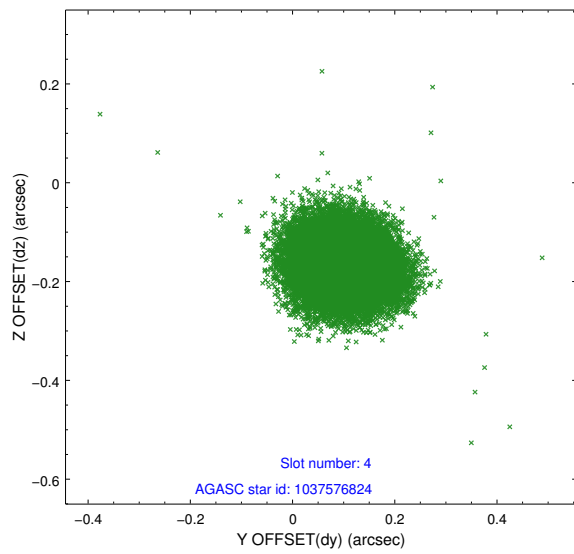
slot	status	id	mag	n_pts	med_dy	med_dz	dr1	dr2	ra	dec	mean_y	mean_z
0	FID	HRC-I-1	6.89	11390	-0.640	-0.028	0.006	0.011	0.000000	0.000000	-766.58	240.08
1	FID	HRC-I-2	7.02	11389	0.719	-0.026	0.006	0.011	0.000000	0.000000	844.26	241.16
2	UNUSED		0.00	0	0.000	0.000	0.000	0.000	0.000000	0.000000	0.00	0.00
3	GUIDE	1037567144	8.75	22771	-0.176	-0.156	0.071	0.117	284.940440	-37.605390	1802.81	341.65
4	GUIDE	1037576824	8.72	22772	0.100	-0.165	0.072	0.117	284.177029	-38.323536	-1320.88	1614.04
5	GUIDE	1037578168	8.10	22772	0.066	-0.109	0.068	0.110	284.493659	-38.169059	-517.43	933.58
6	GUIDE	1037697736	8.40	22772	-0.172	0.249	0.068	0.112	285.603240	-37.829792	1595.17	-1700.52
7	GUIDE	1037703208	9.41	22766	0.185	0.179	0.099	0.161	285.284327	-38.614704	-1370.59	-1677.68

2.4 Star Slots

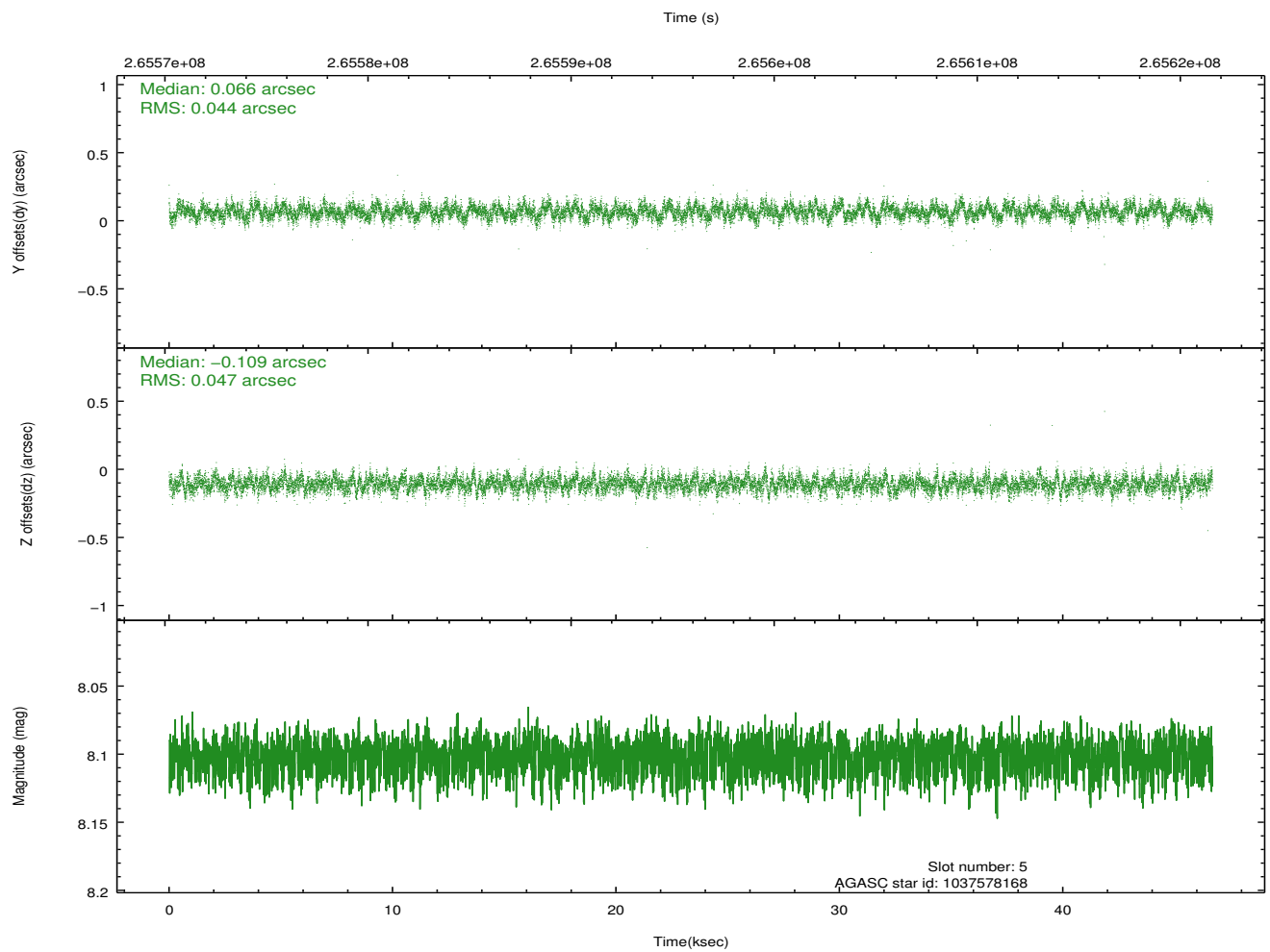
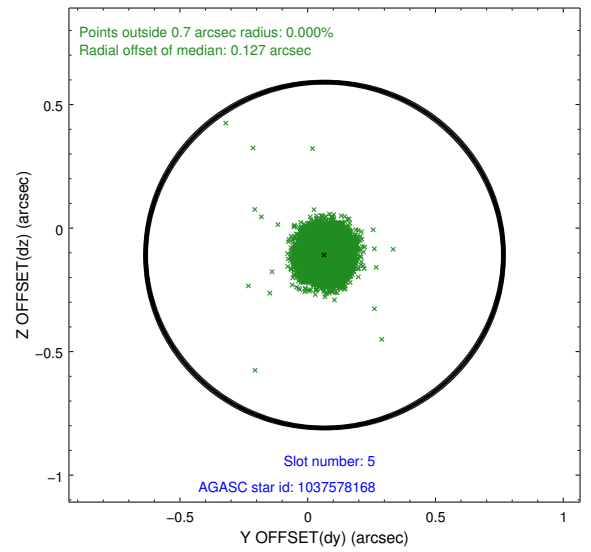
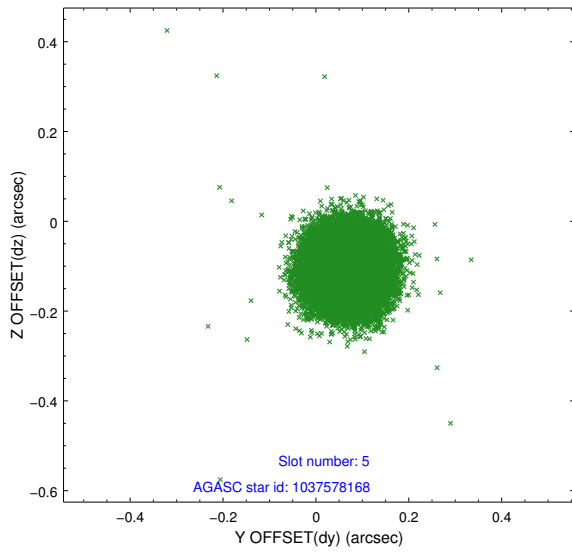
2.4.1 Slot 3



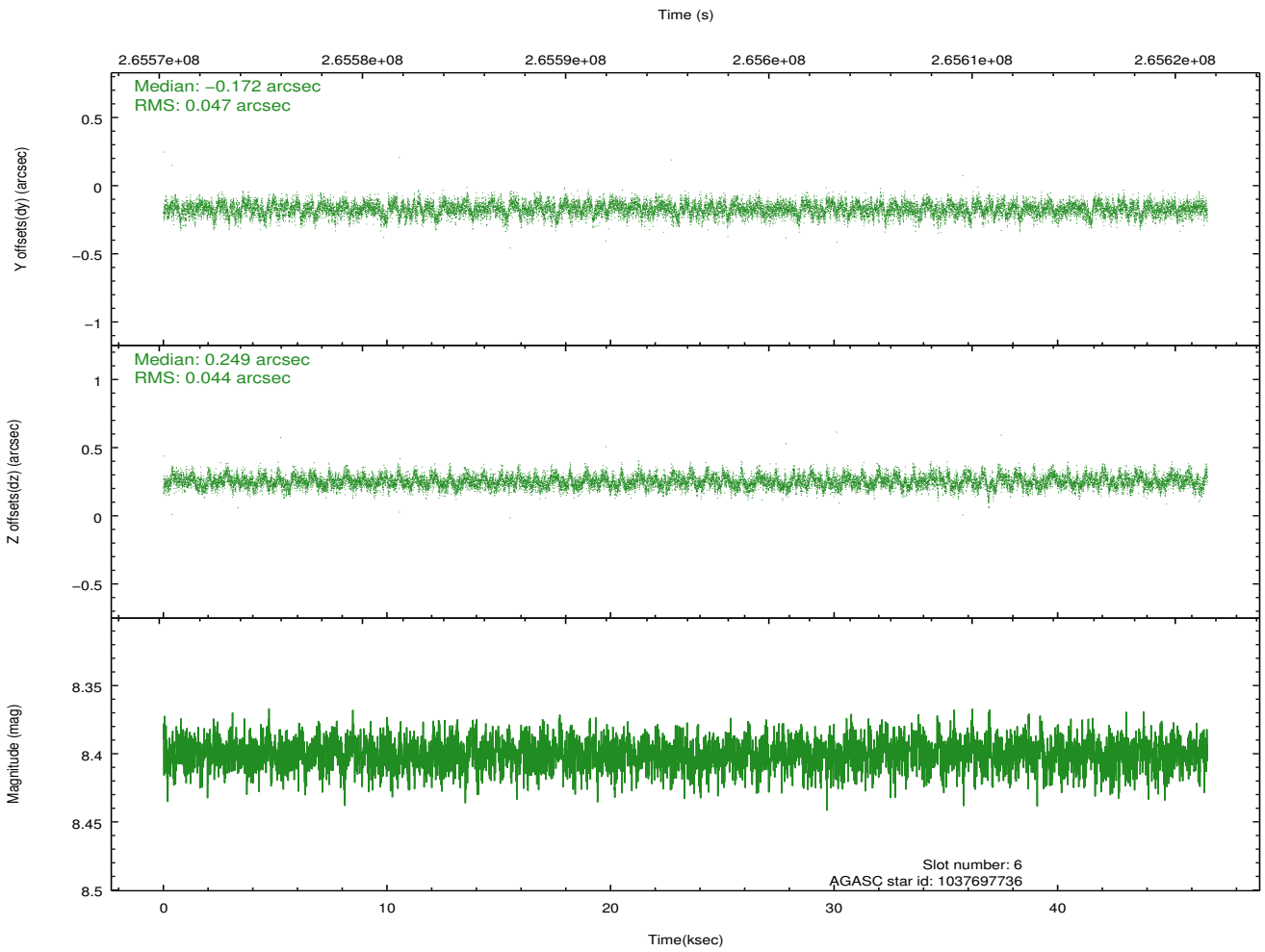
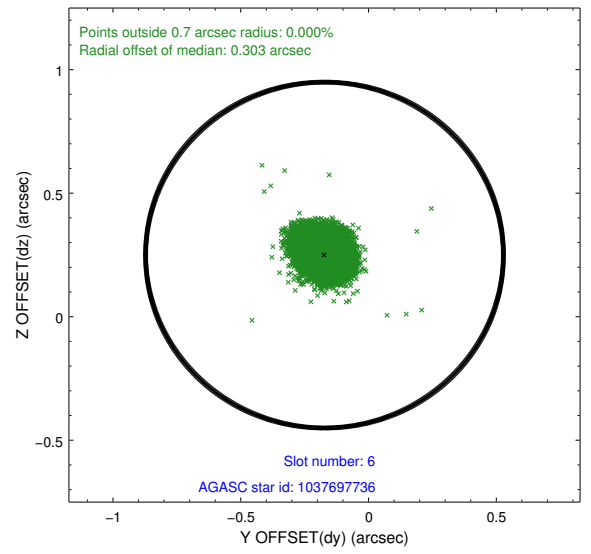
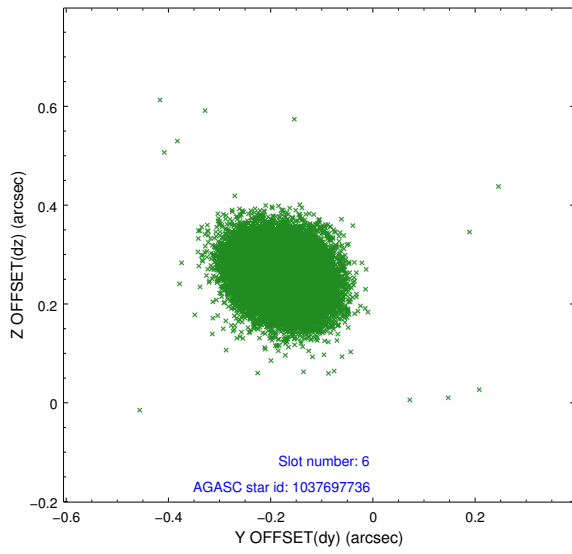
2.4.2 Slot 4



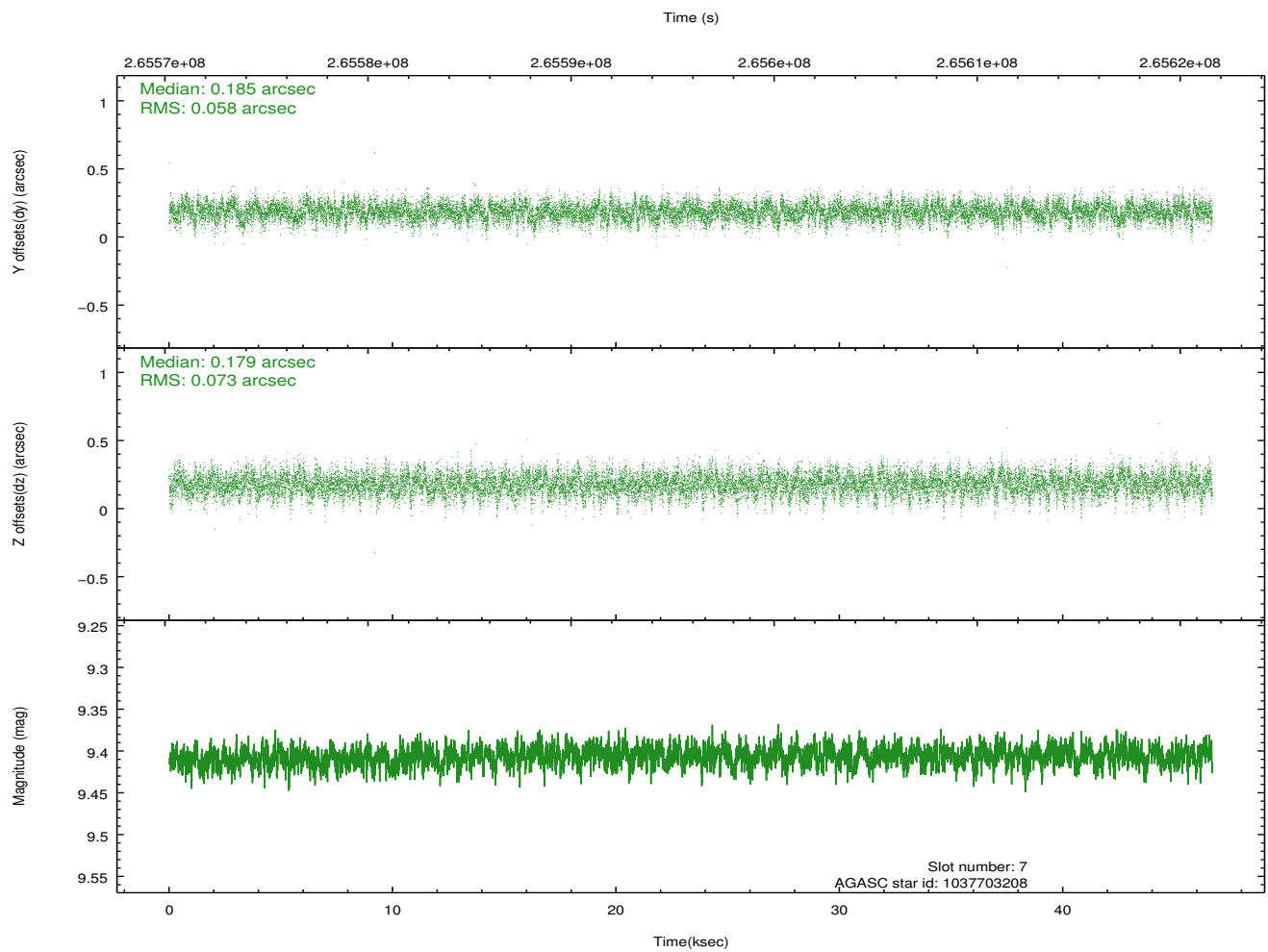
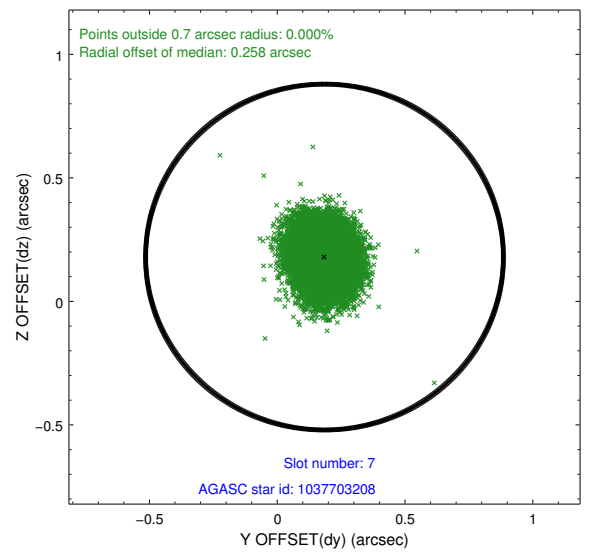
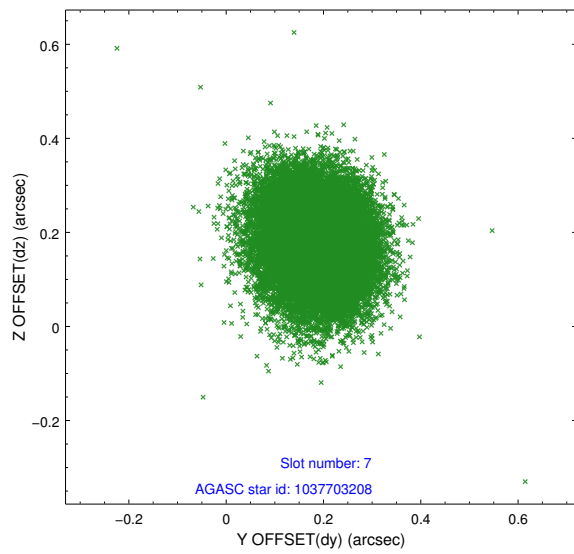
2.4.3 Slot 5



2.4.4 Slot 6

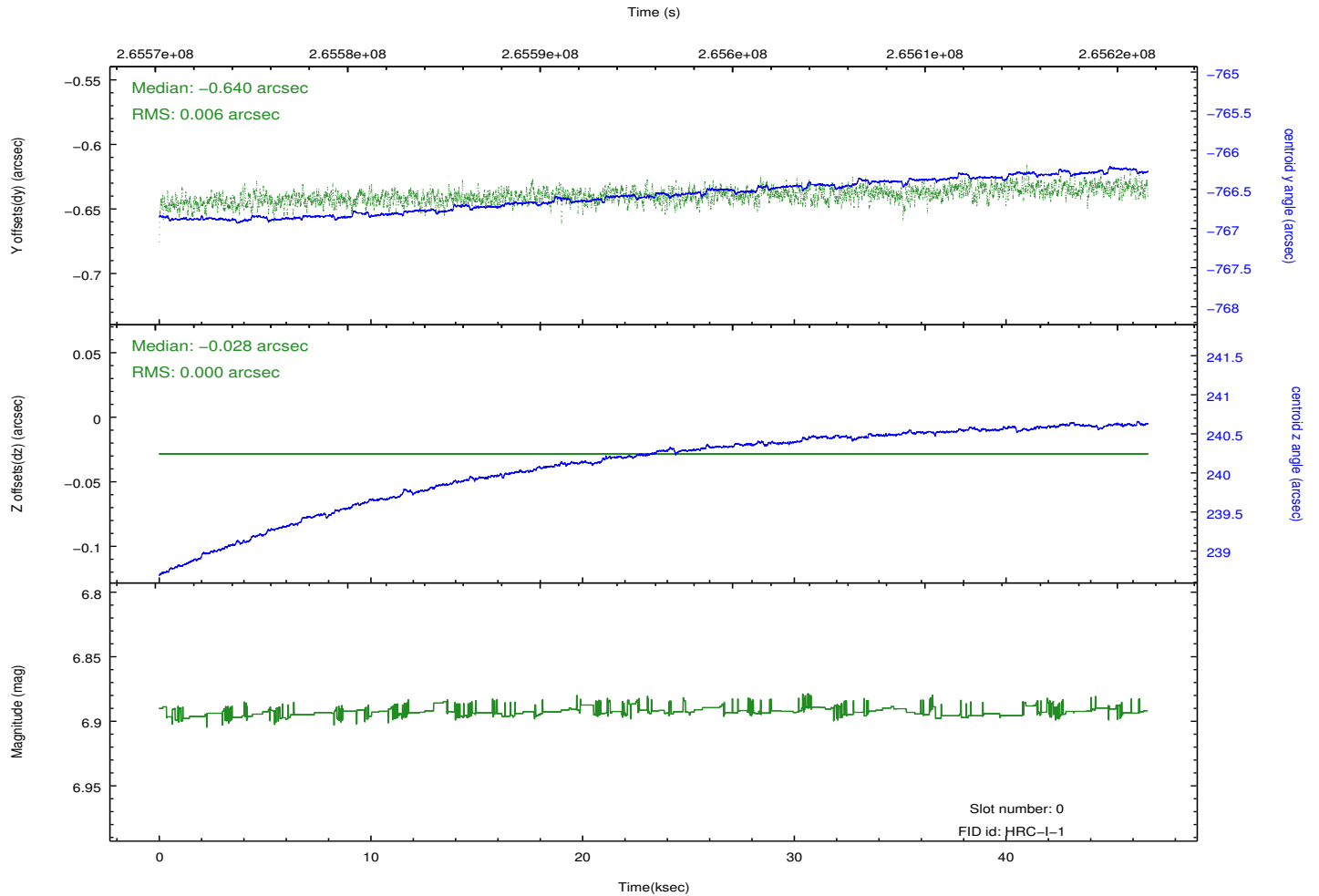
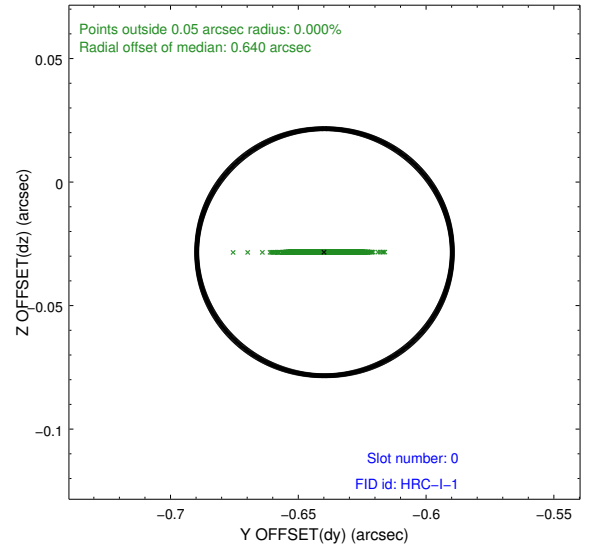
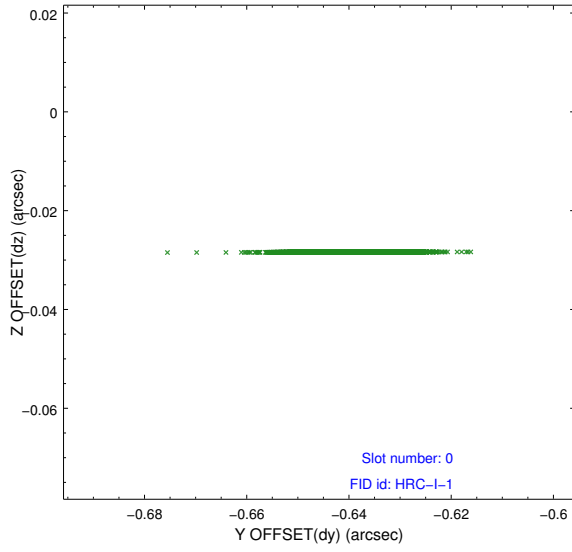


2.4.5 Slot 7

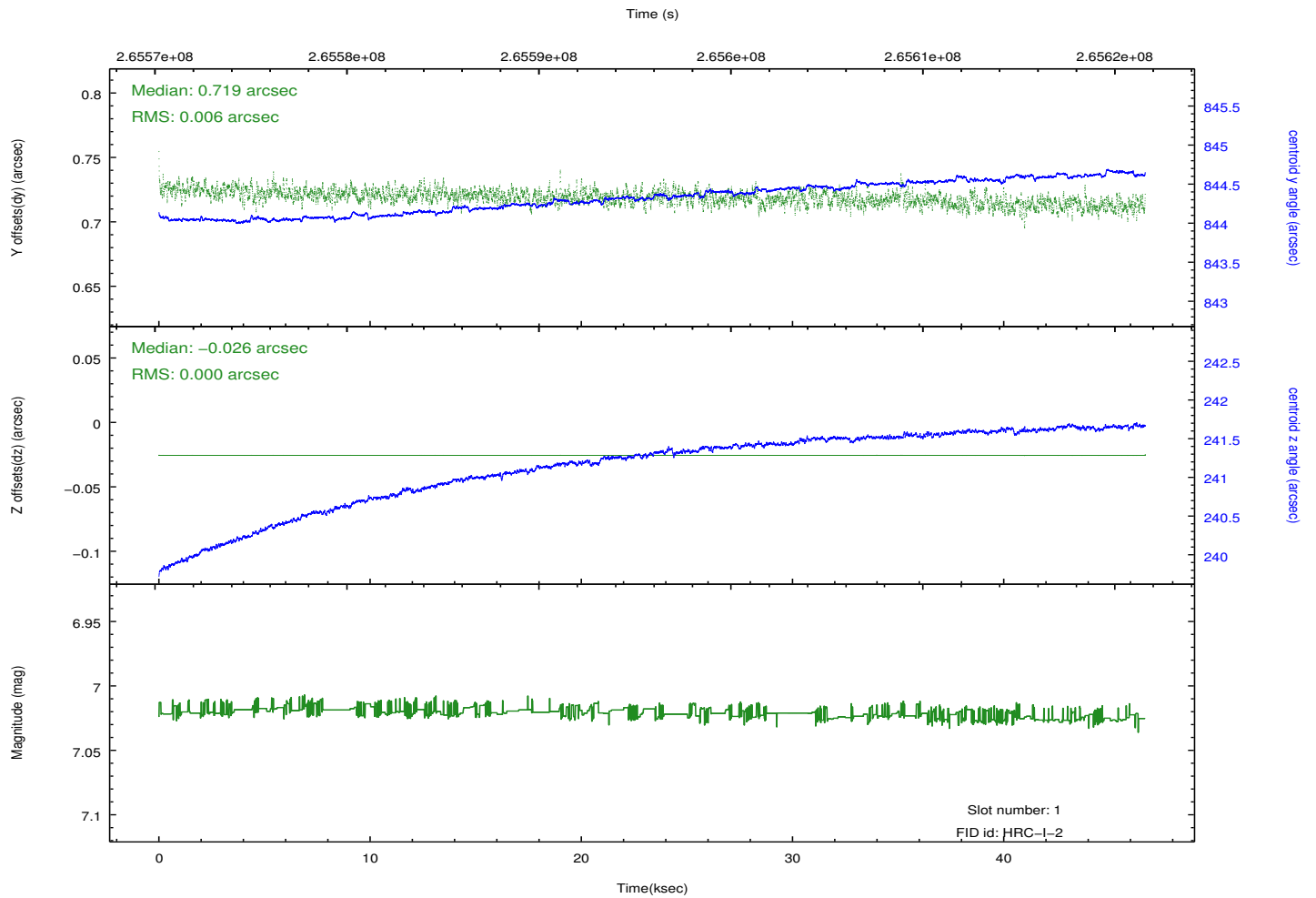
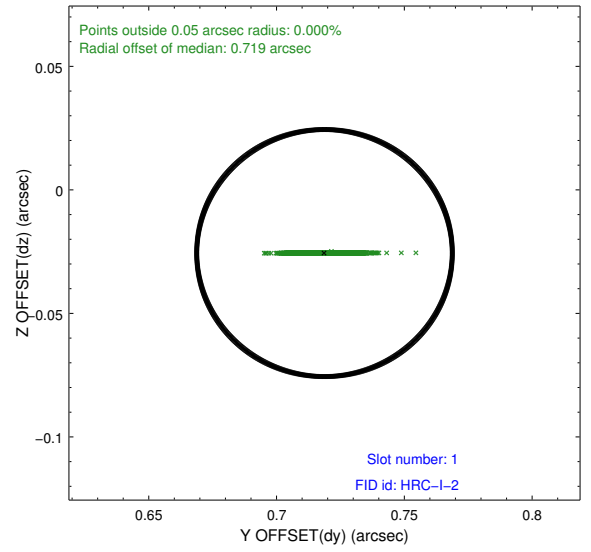
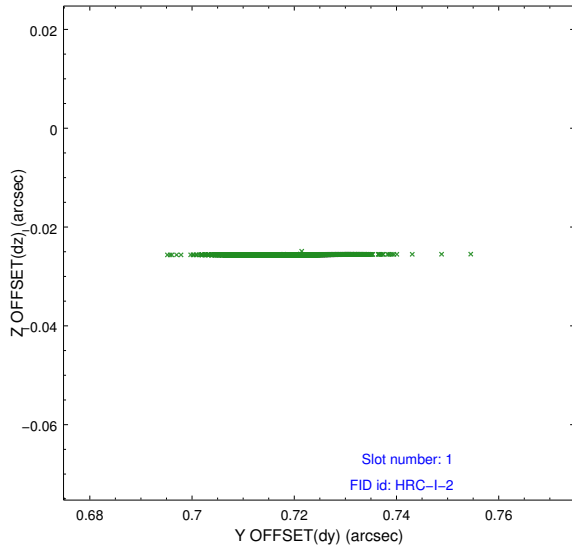


2.5 FID Slots

2.5.1 Slot 0



2.5.2 Slot 1



A Summary

A.1 Status

V&V Scientist	Jen Lauer
V&V Date (YYYY-MM-DD)	2012.08.14
V&V Edition	1
V&V Disposition and Status	OK
V&V Charge Time	46.3136021

A.2 Comments

Slot 2 was not utilized in this observation. Fid light positions are beyond normally expected ranges due to a large offset in SIM position. Window constraint met.