

V&V Reference Report

L2 ASCDS Version : 8.4.4

Observation 7462 - L2 Version 3
Chandra X-Ray Center

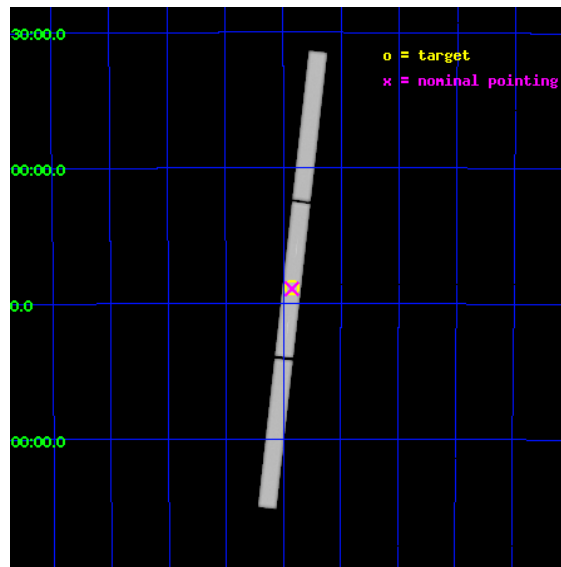
L2 Processing Date : Aug 12 2012

Contents

1	Front	2
2	OBI	3
2.1	OBI	3
2.1.1	Images	3
2.1.2	Parameters	4
2.1.3	Events	4
2.2	Compared Parameters	5
2.3	Aspect	6
2.4	Star Slots	9
2.4.1	Slot 3	9
2.4.2	Slot 4	10
2.4.3	Slot 5	11
2.4.4	Slot 6	12
2.4.5	Slot 7	13
2.5	FID Slots	14
2.5.1	Slot 0	14
2.5.2	Slot 1	15
2.5.3	Slot 2	16
3	Gratings	17
3.1	LETG Arm	17
A	Summary	19
A.1	Status	19
A.2	Comments	19

1 Front

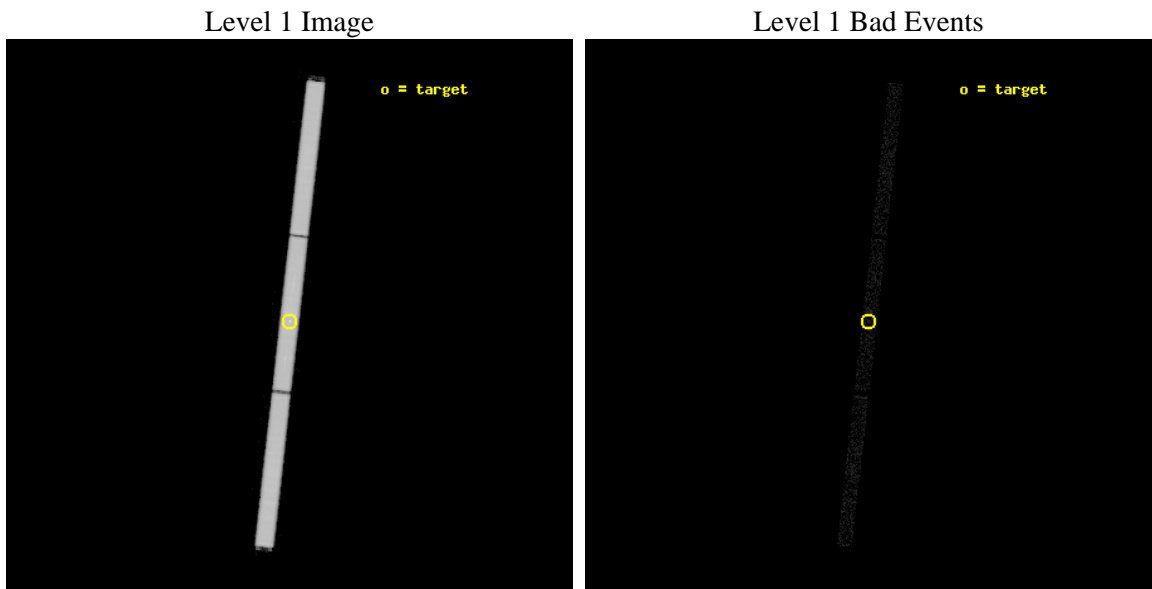
seq_num	300195	Sequence number
obs_id	7462	Observation id
title	A grating spectrum of a bright nova in outburst	Proposal title
observer	Dr Marina Orio	Principal investigator
object	V5116 Sgr	Source name
ra_targ	274.461667	Observer's specified target RA [deg]
dec_targ	-30.442	Observer's specified target Dec [deg]
ra_nom	274.46224001696	Nominal RA [deg]
dec_nom	-30.446722997329	Nominal Dec [deg]
roll_nom	276.3717256338	Nominal Roll [deg]
revision	3	Processing version of data
ontime	35150.326688766	[s]
livetime	34802.878310805	Ontime multiplied by DTCOR
l2events	2901786	Number of level 2 events



2 OBI

2.1 OBI

2.1.1 Images



2.1.2 Parameters

obi_num	0	Obi number	sched_exp_time	35000.000000	[s] Scheduled observation exposure time
ascdsver	8.4.5	Processing system revision	ontime	35150.326688766	[s]
caldbver	4.5.1.1	 	l1events	3912758	Number of level 1 events
date	2012-08-12T01:11:42	Date and time of file creation			
revision	3	Processing version of data			

2.1.3 Events

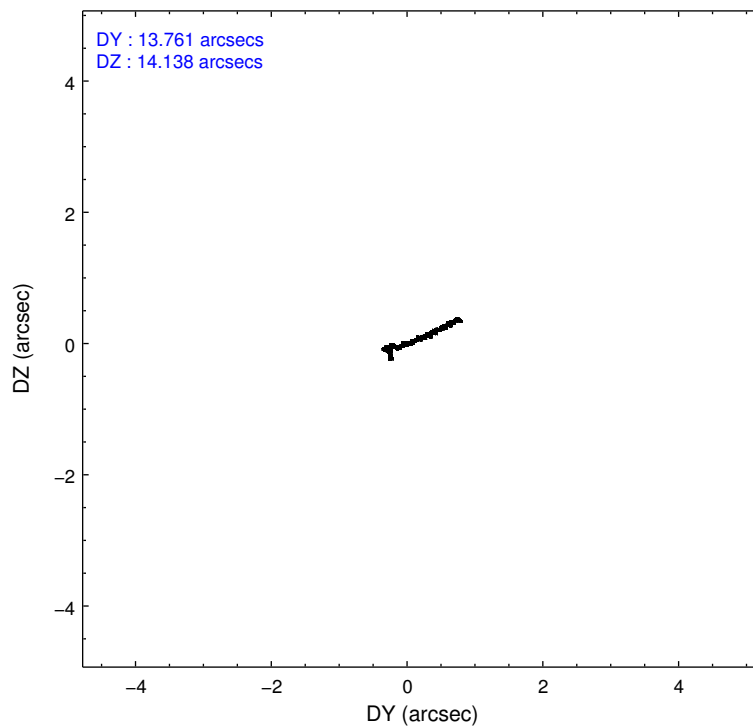
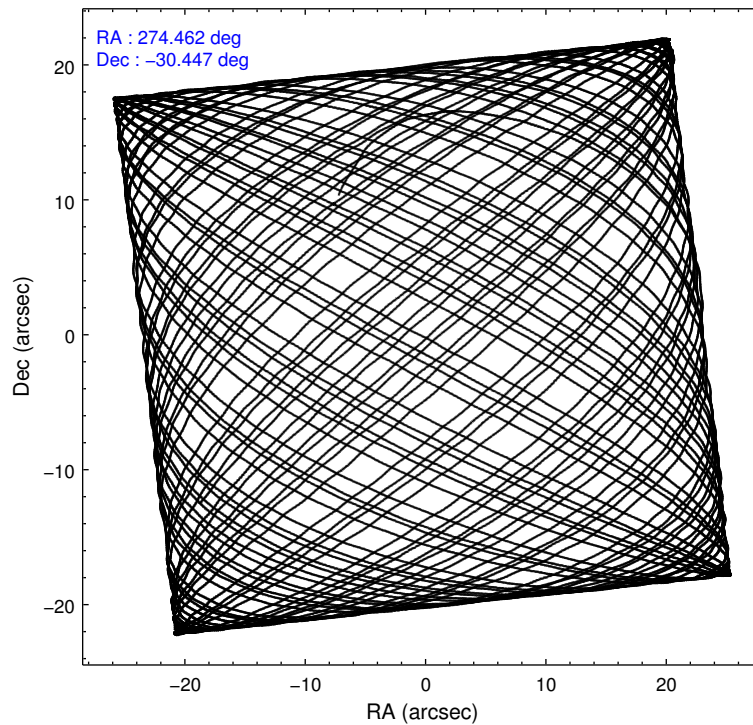
Level 1 Events

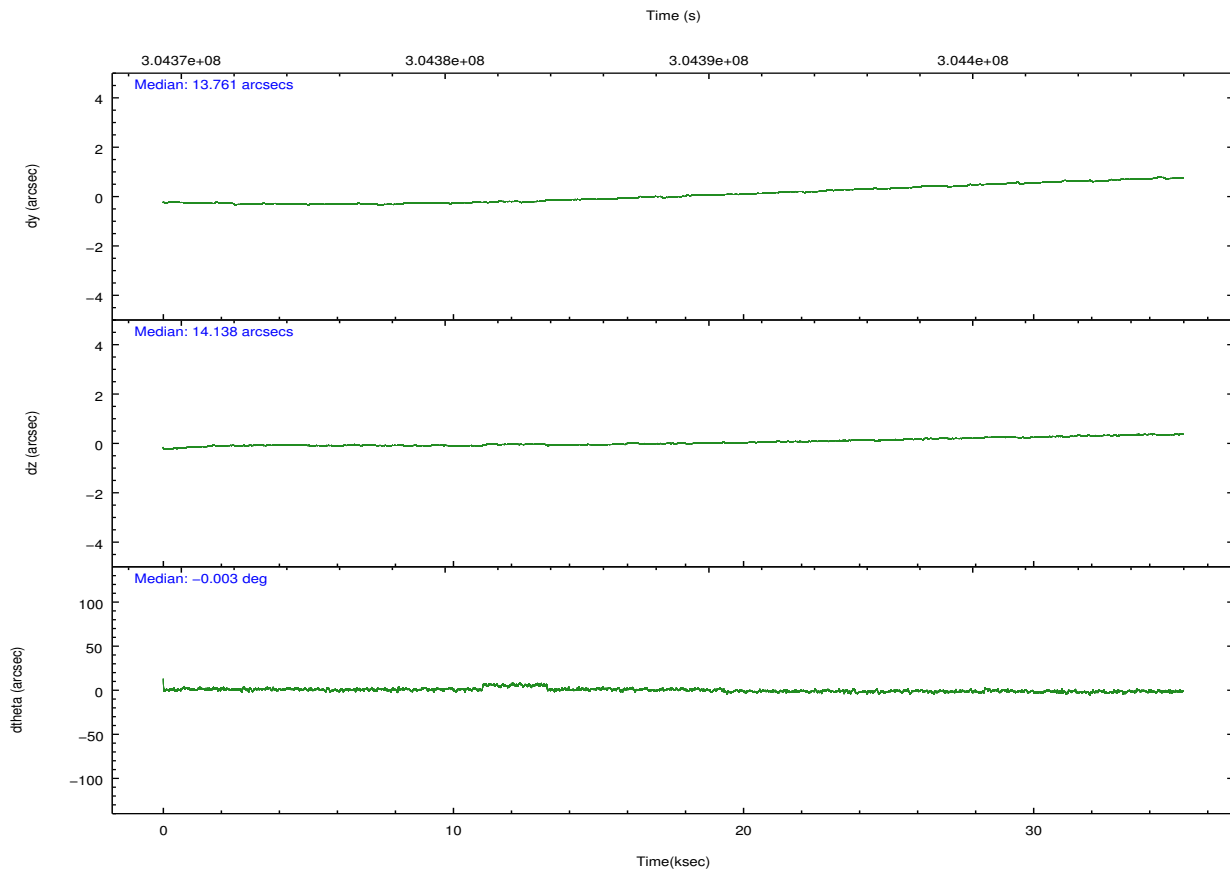
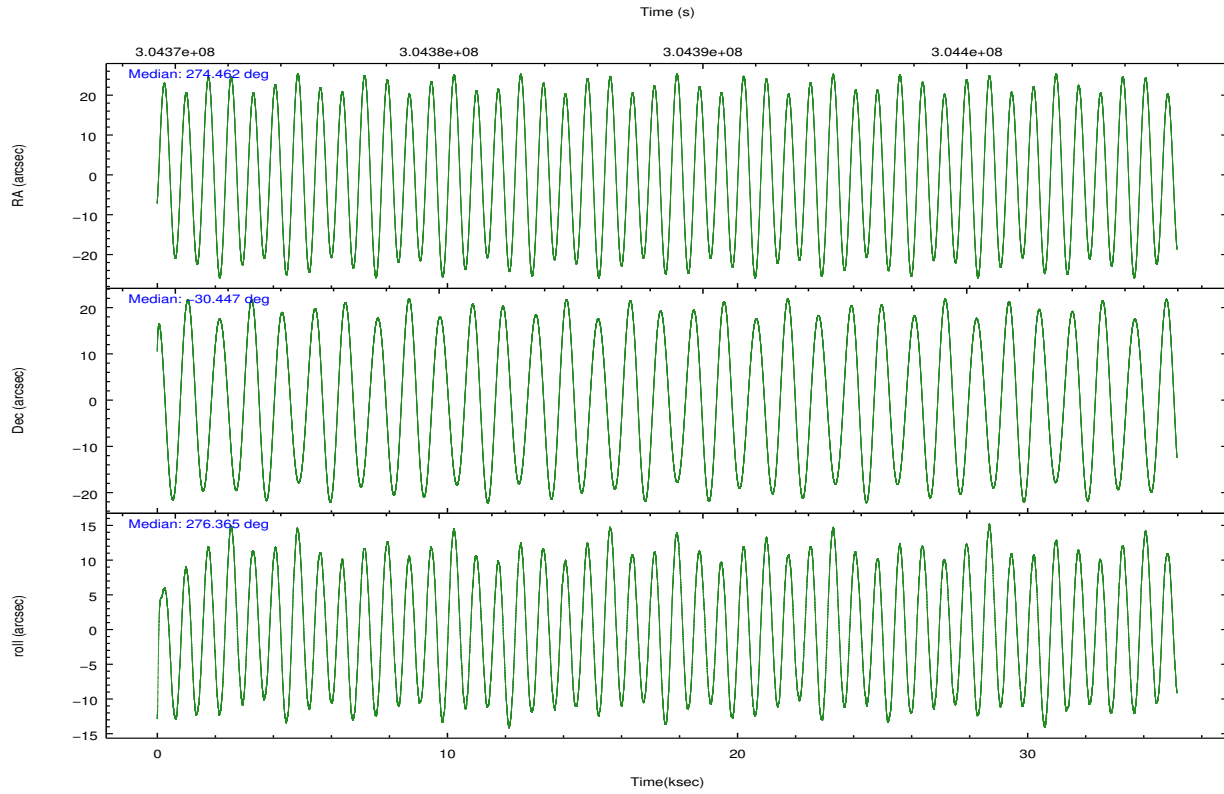
	segment 1	segment 2	segment 3
level 1 events	1302456	1301772	1308530
rejected events	32551	31993	32549
rejected %	2%	2%	2%

2.2 Compared Parameters

Parameter	Planned	Actual	Parameter	Planned	Actual
Instrument	HRC	HRC	Obspar format version number	7	7
Detector	HRC-S	HRC-S	Obspar file type	PREDICTED	ACTUAL
Grating	LETG	LETG	Obspar update status	NONE	UPDATED
Data mode	OBSERVING	OBSERVING			
Observation mode	POINTING	POINTING			
[deg] Pointing RA	274.441141	274.4622400169606			
[deg] Pointing Dec	-30.424498	-30.44672299732938			
[deg] Pointing Roll	276.293705	276.3717256337981			
[mm] SIM focus pos	-1.429586	-1.428180813131781			
[mm] SIM defocus	0.1037507710433287	0.1051558262725154			
[mm] SIM translation stage pos	250.455976	250.466033080201			
[mm] SIM translation stage offset	0	-0.01005468664627074			
[s] Observation start time (MET)	304371217.184000	304370238.48941			
Observation start date	2007-08-24T19:32:32	2007-08-24T19:17:18			
[s] Observation end time (MET)	304406217.184000	304407881.10371			
Observation end date	2007-08-25T05:15:52	2007-08-25T05:44:41			

2.3 Aspect



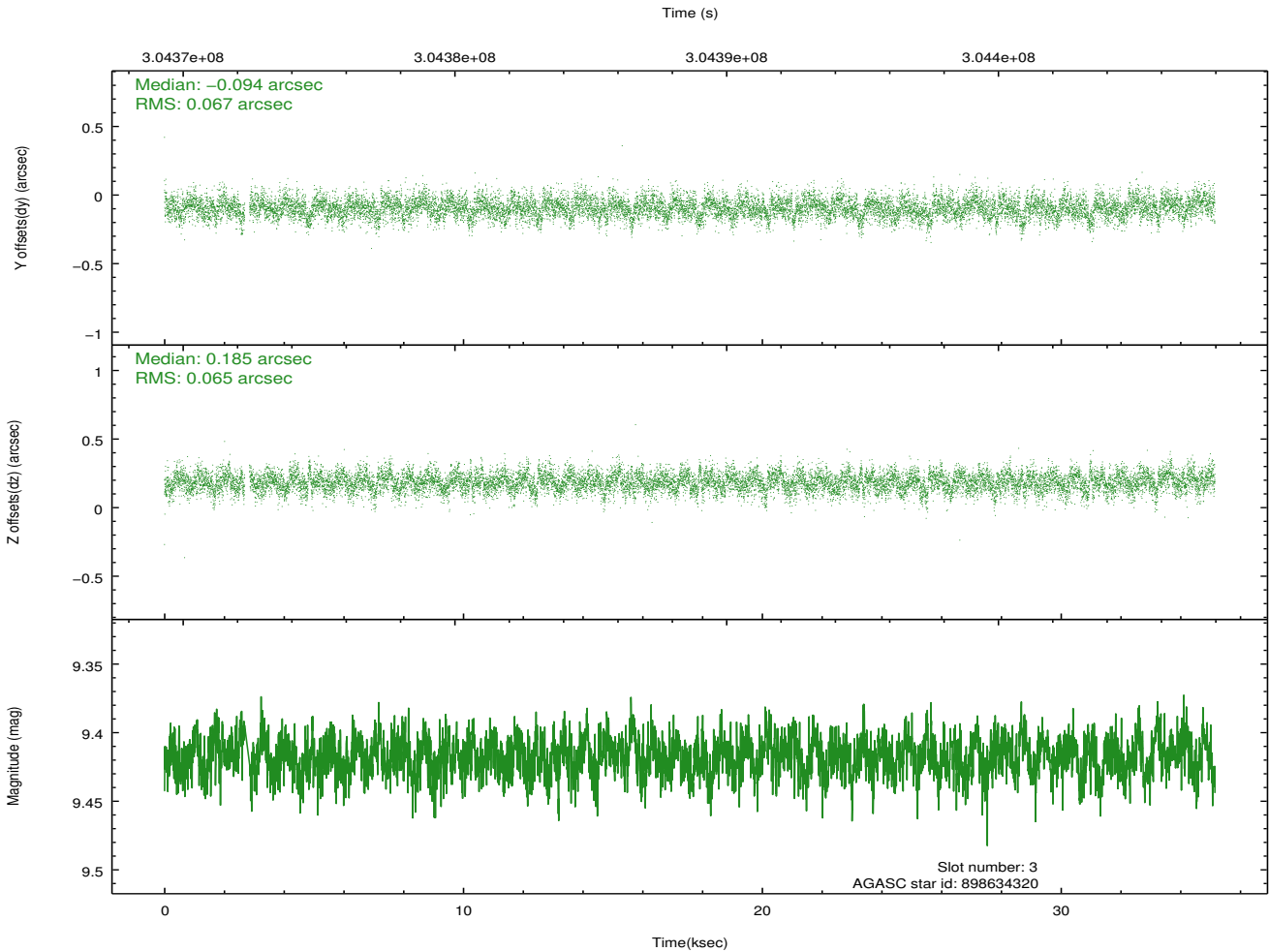
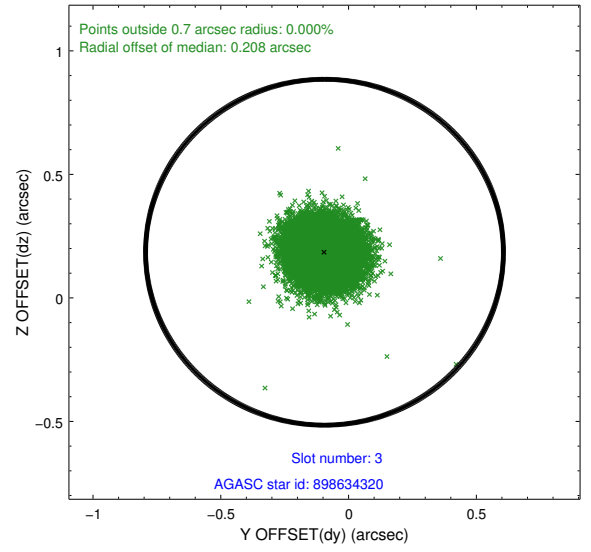
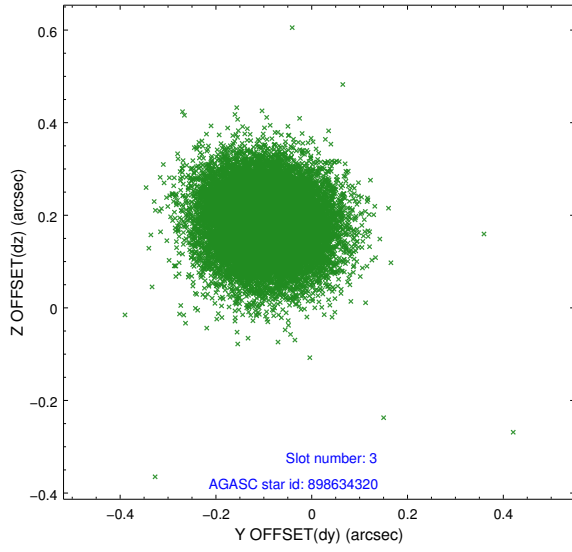


Slot Statistics

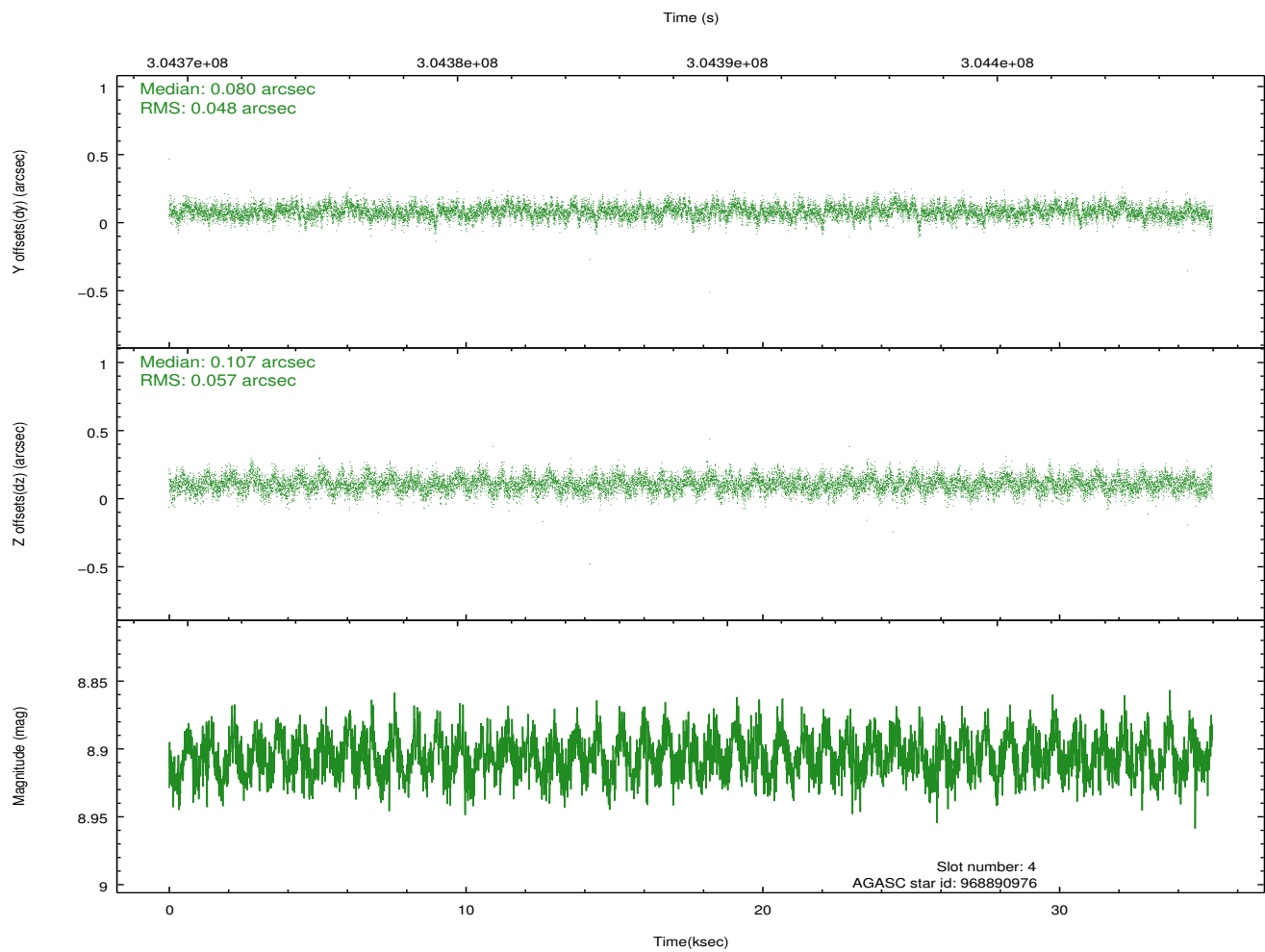
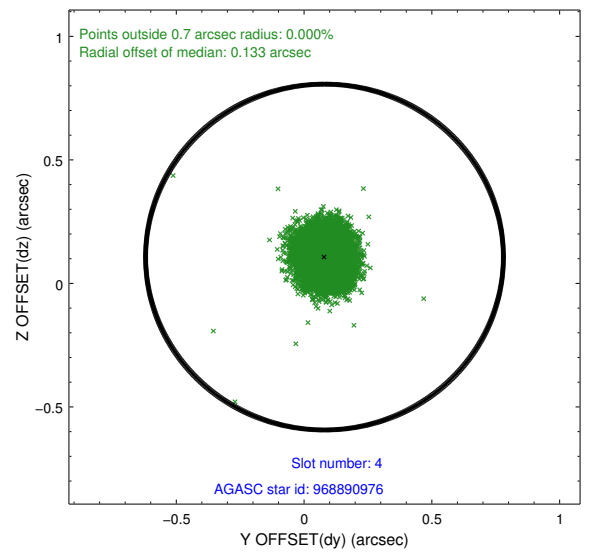
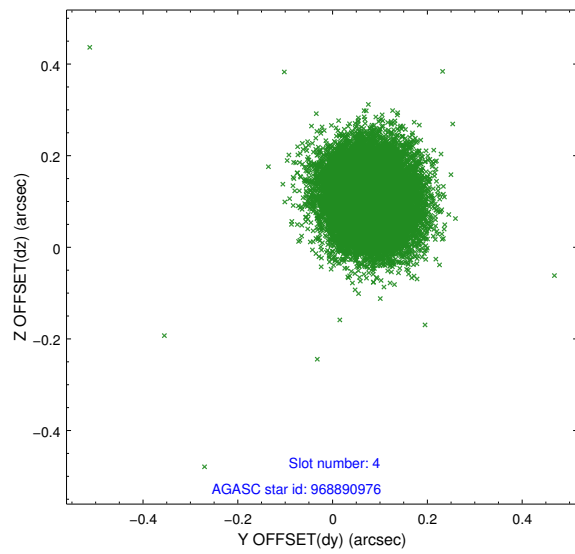
slot	status	id	mag	n_pts	med_dy	med_dz	dr1	dr2	ra	dec	mean_y	mean_z
0	FID	HRC-S-1	7.01	8574	0.074	-0.219	0.017	0.027	0.000000	0.000000	-1168.23	-463.08
1	FID	HRC-S-3	7.01	8574	0.092	-0.002	0.025	0.040	0.000000	0.000000	-1171.06	566.62
2	FID	HRC-S-4	6.95	8570	0.222	-0.076	0.015	0.034	0.000000	0.000000	1230.04	569.22
3	GUIDE	898634320	9.42	17056	-0.094	0.185	0.098	0.160	274.204141	-29.859140	-2102.96	-512.52
4	GUIDE	968890976	8.91	17141	0.080	0.107	0.079	0.128	274.432645	-30.567958	510.79	-82.61
5	GUIDE	968893240	8.16	17139	0.118	-0.054	0.082	0.142	274.128580	-30.405010	-174.16	-957.11
6	GUIDE	969024680	8.35	17137	0.044	-0.155	0.067	0.112	274.594022	-30.710883	1077.32	357.25
7	GUIDE	969019728	8.28	17054	-0.152	-0.084	0.069	0.109	275.177360	-30.122339	-822.55	2396.89

2.4 Star Slots

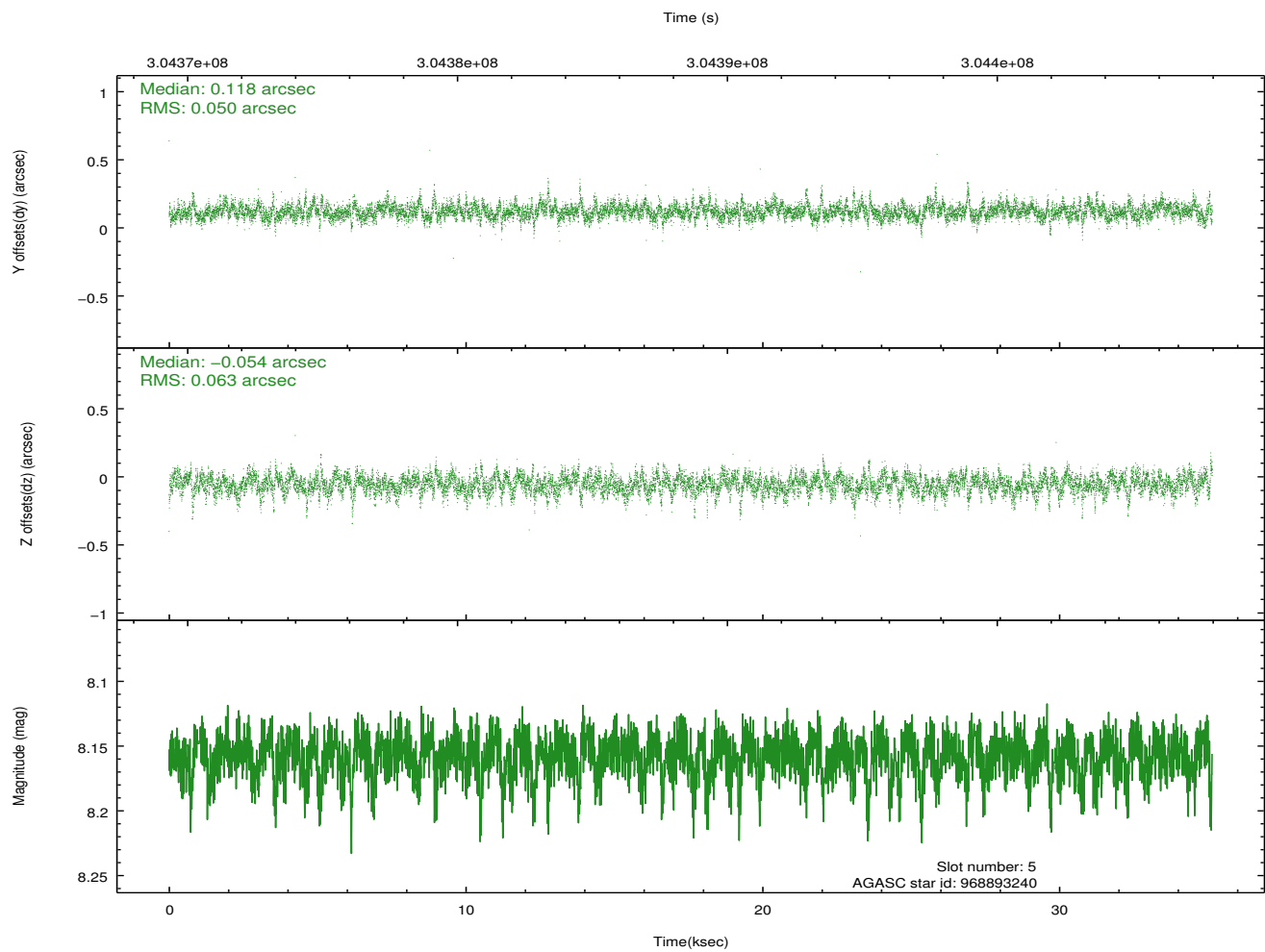
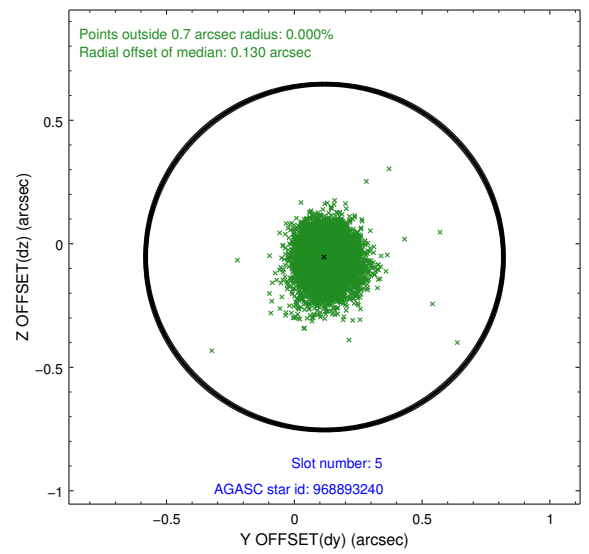
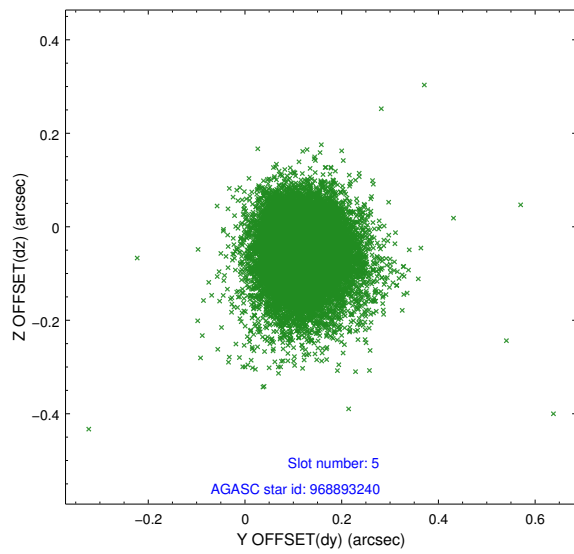
2.4.1 Slot 3



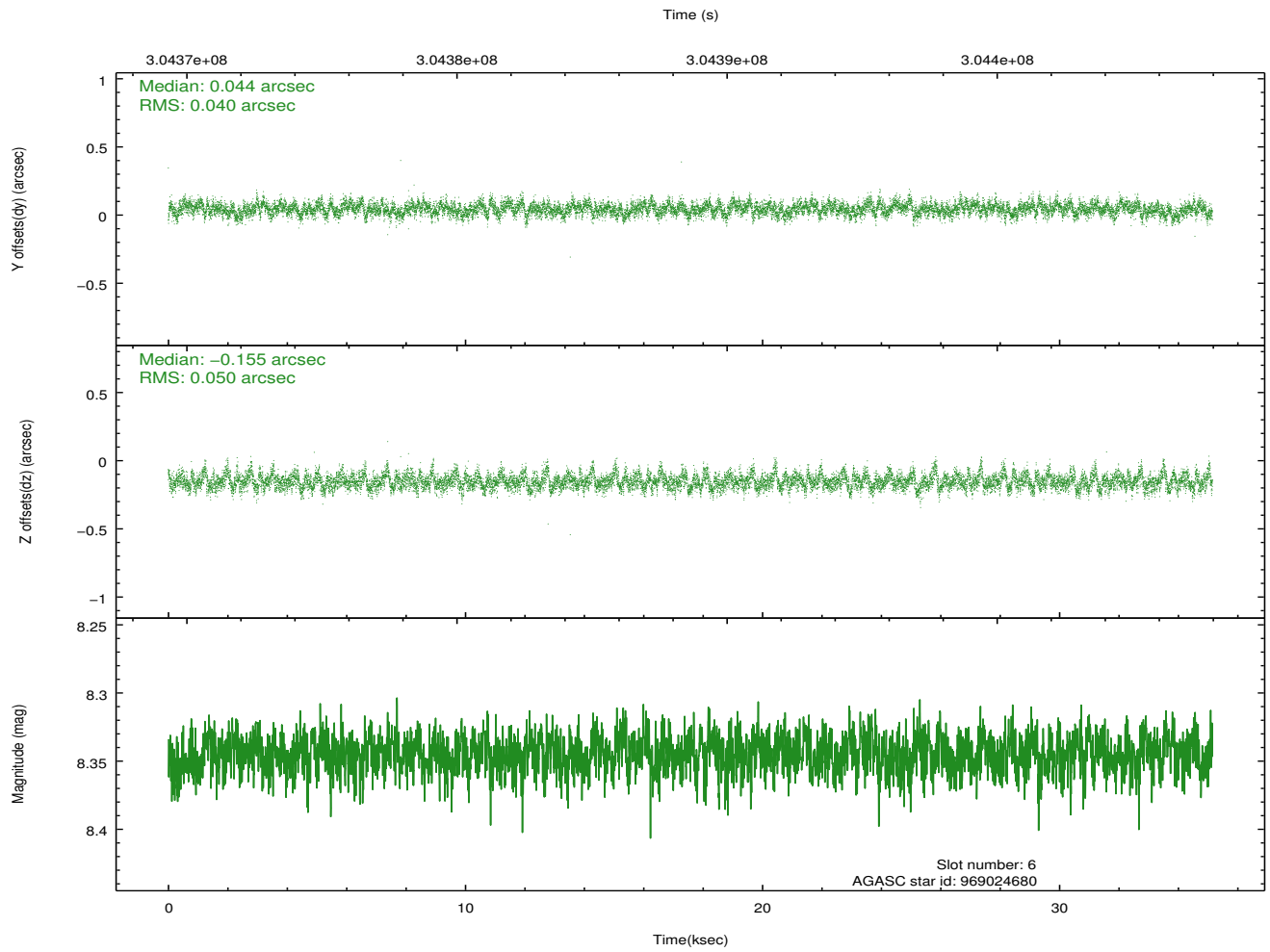
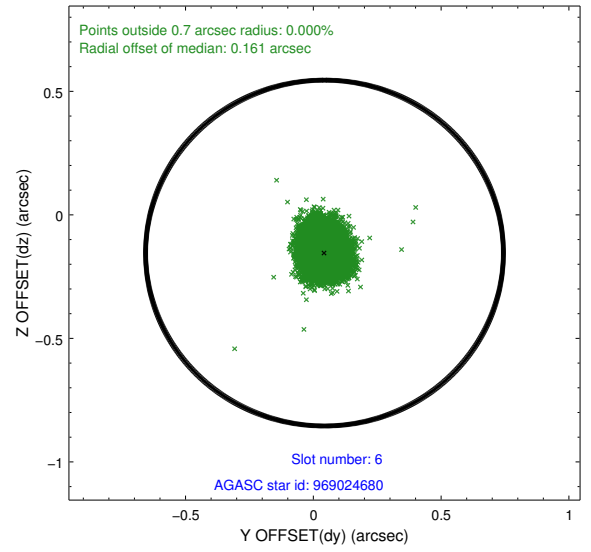
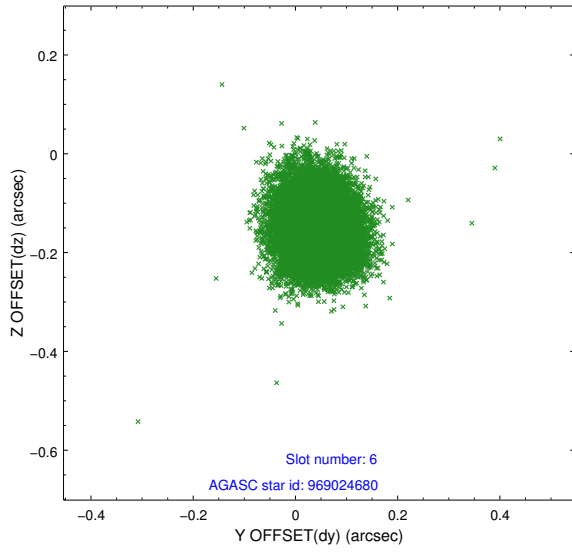
2.4.2 Slot 4



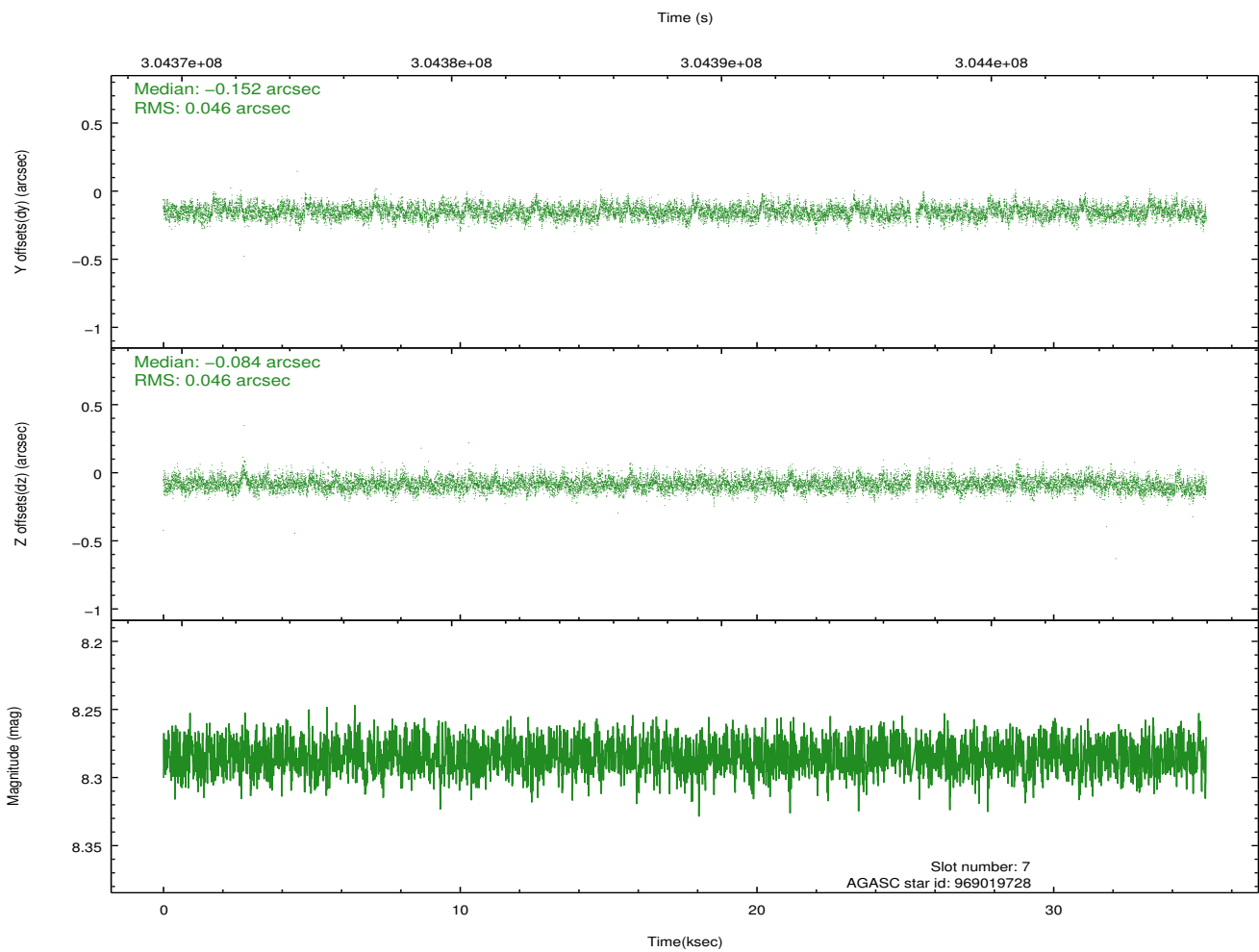
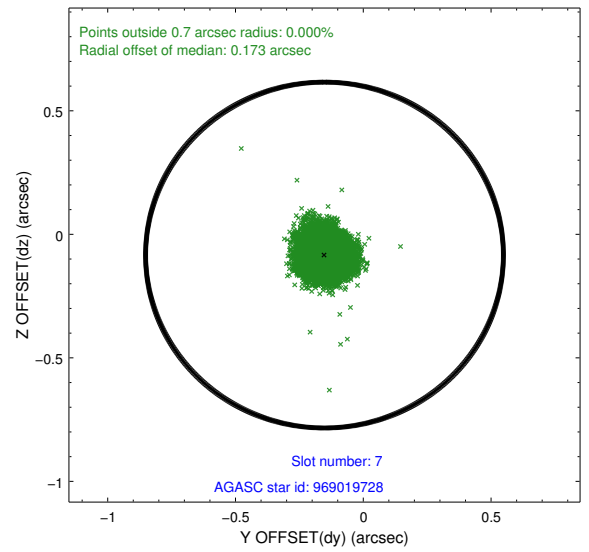
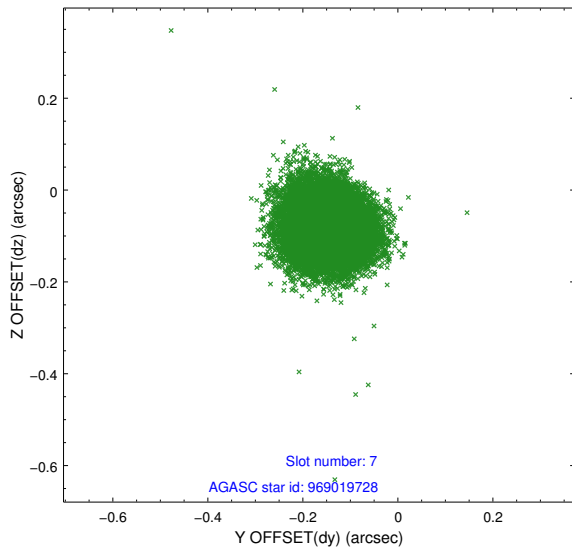
2.4.3 Slot 5



2.4.4 Slot 6

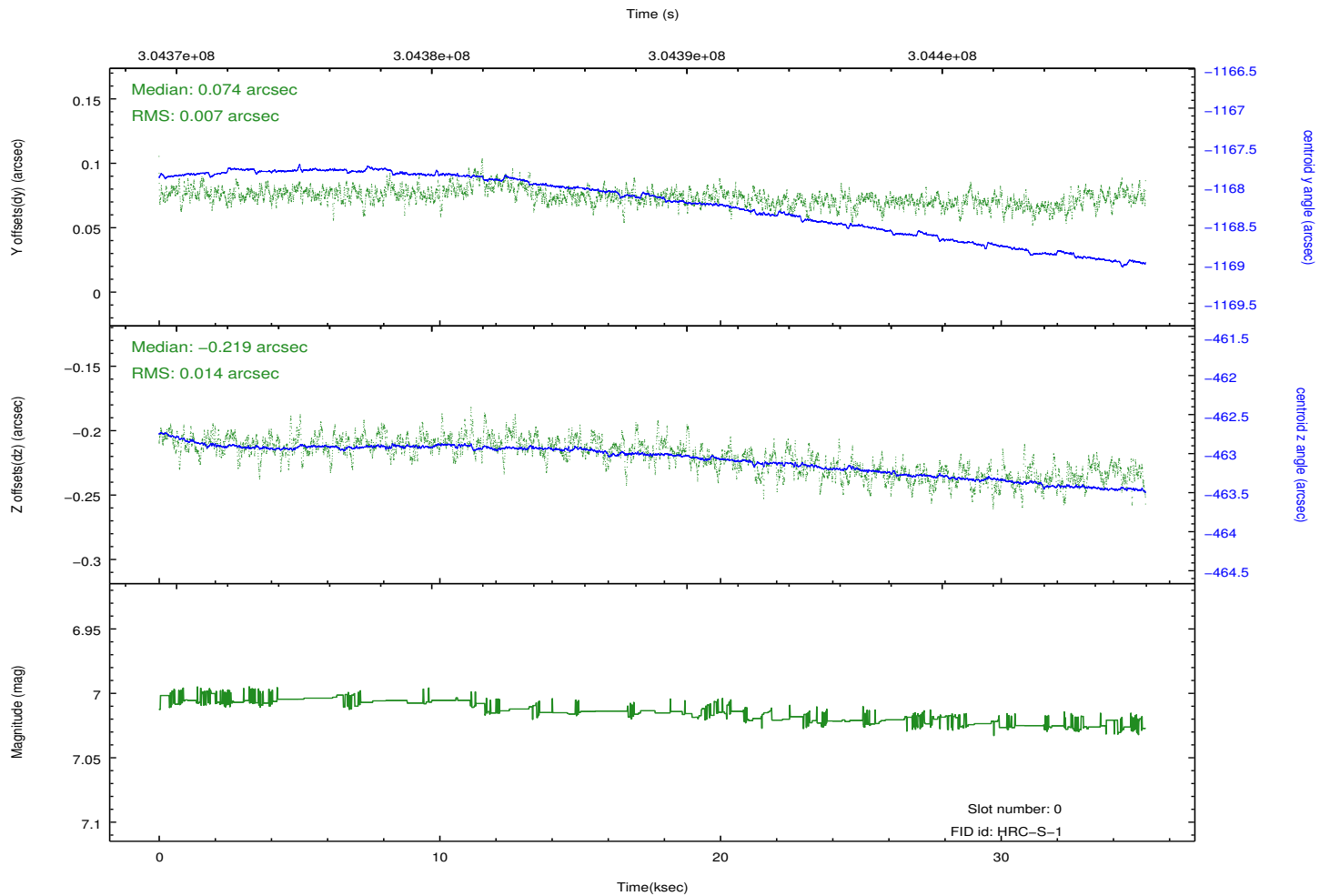
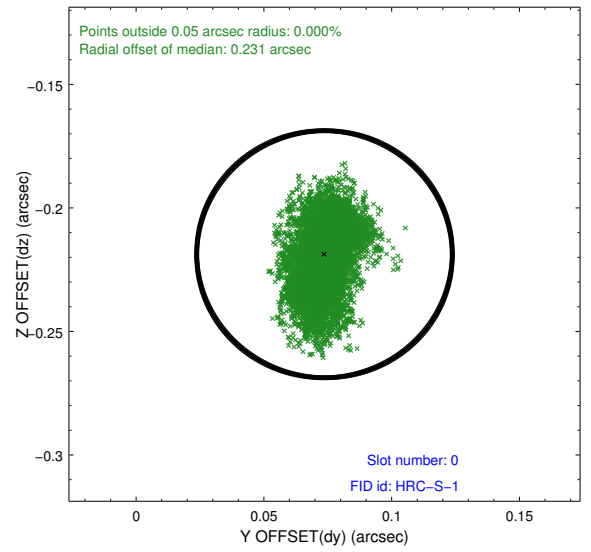
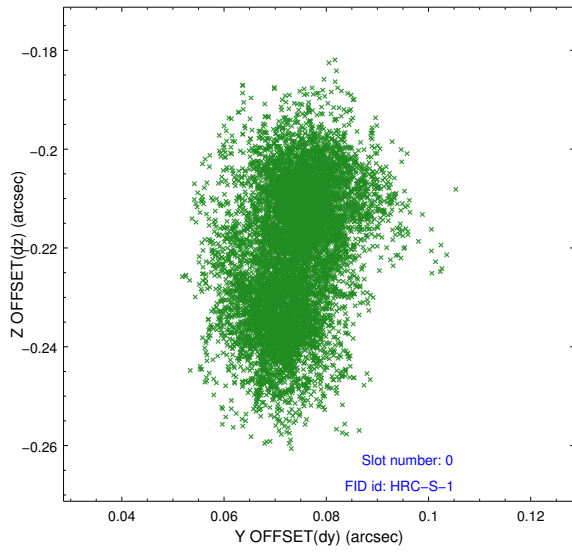


2.4.5 Slot 7

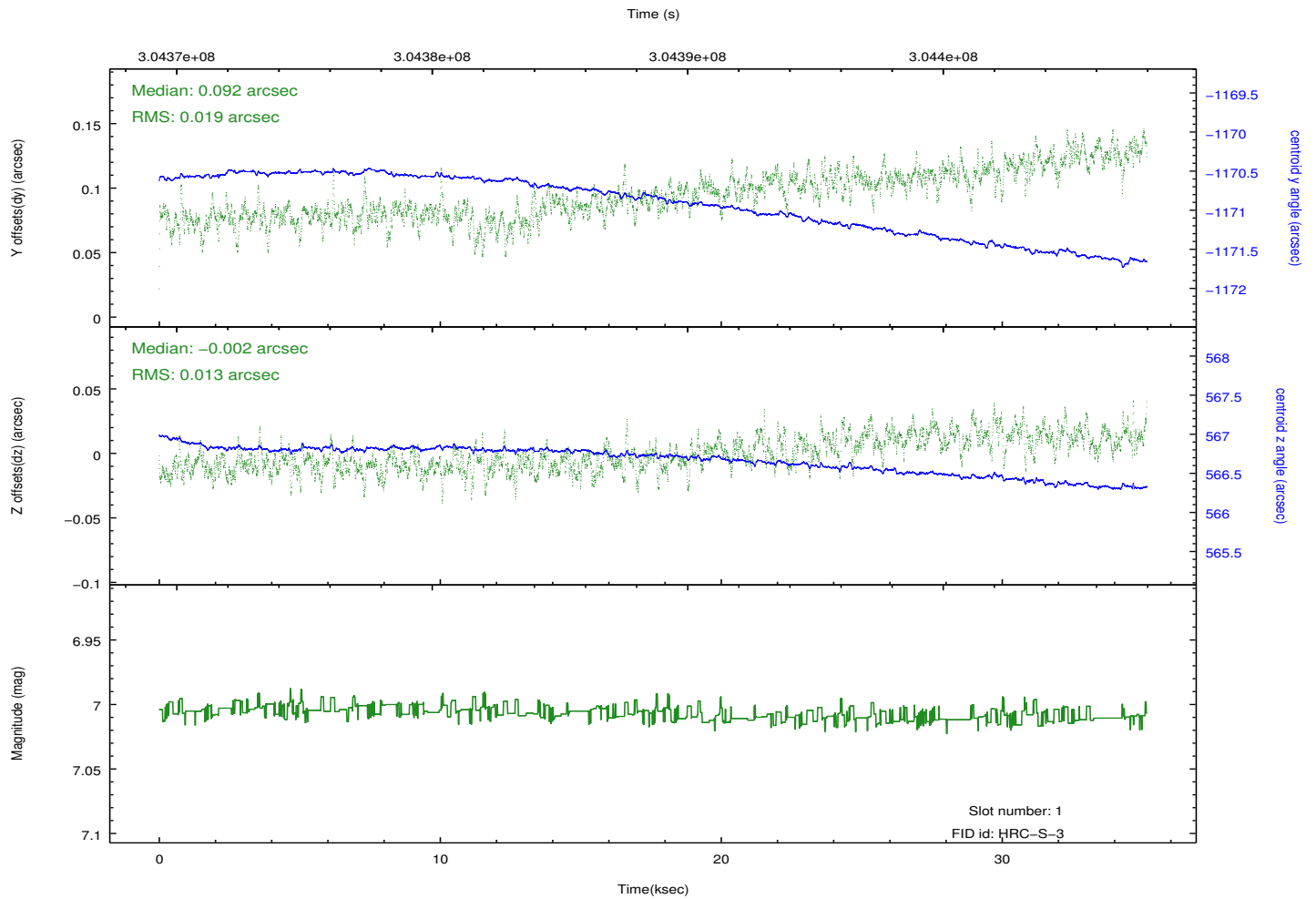
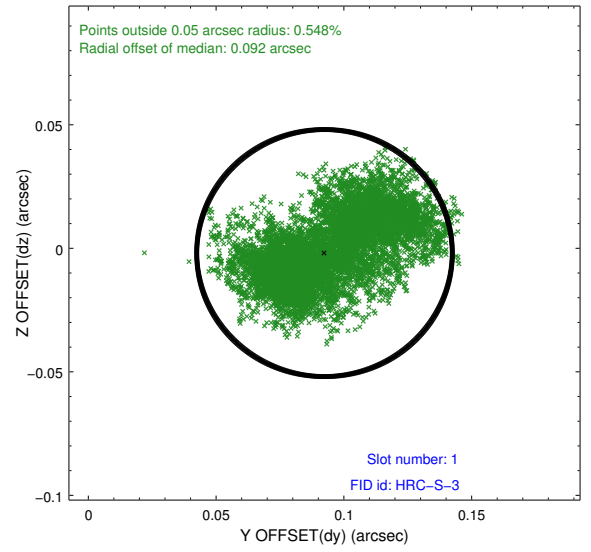
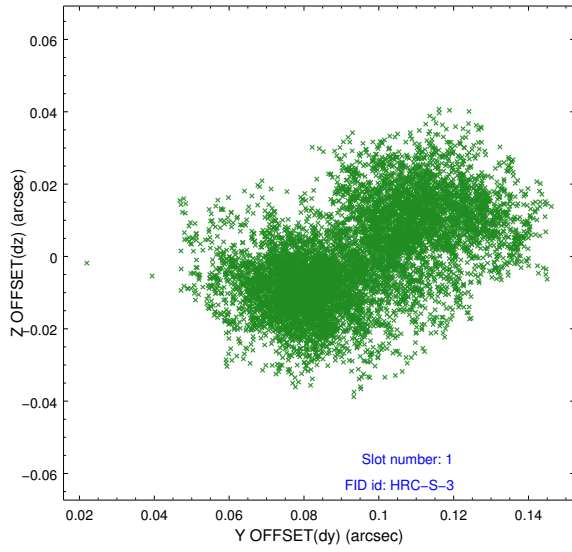


2.5 FID Slots

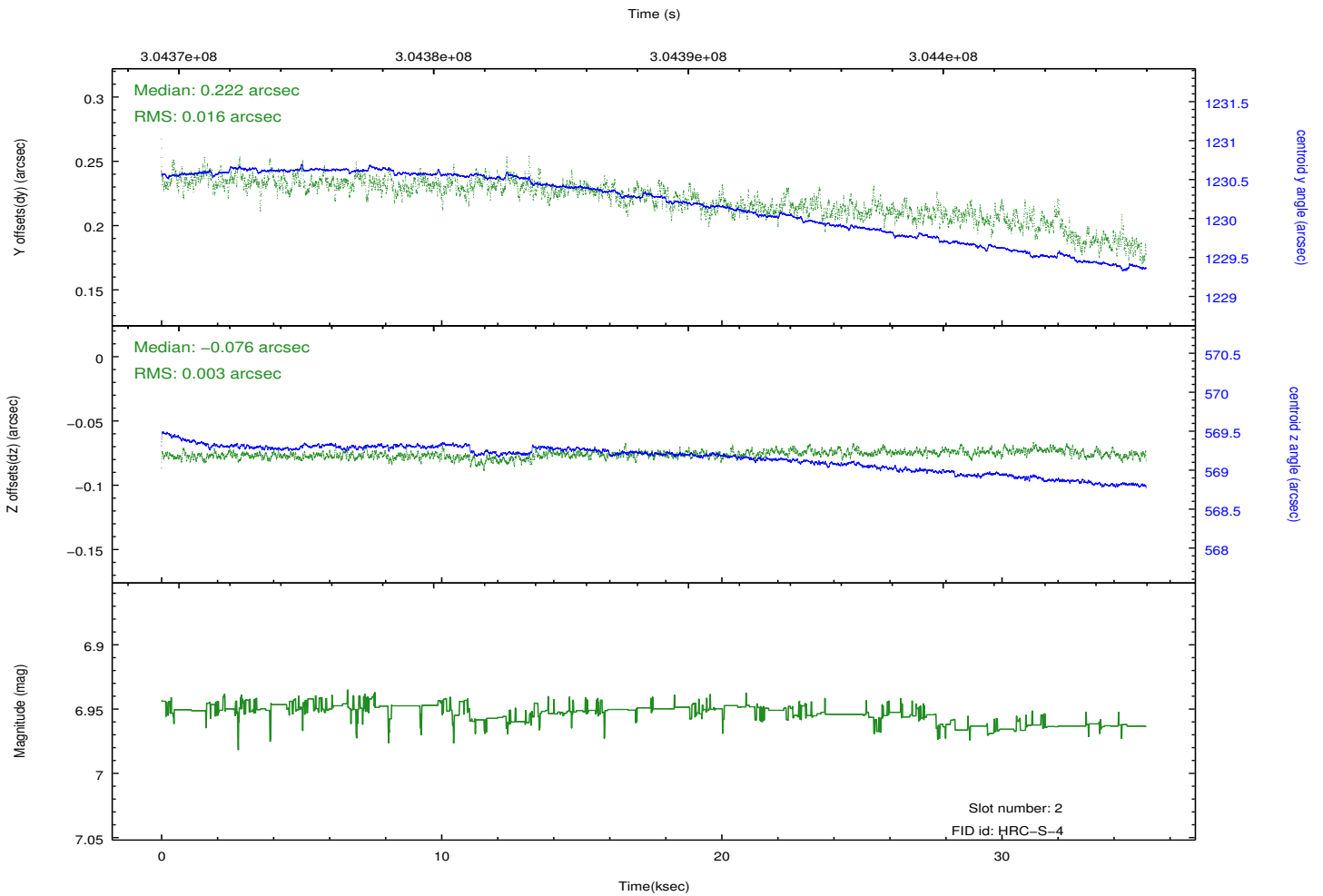
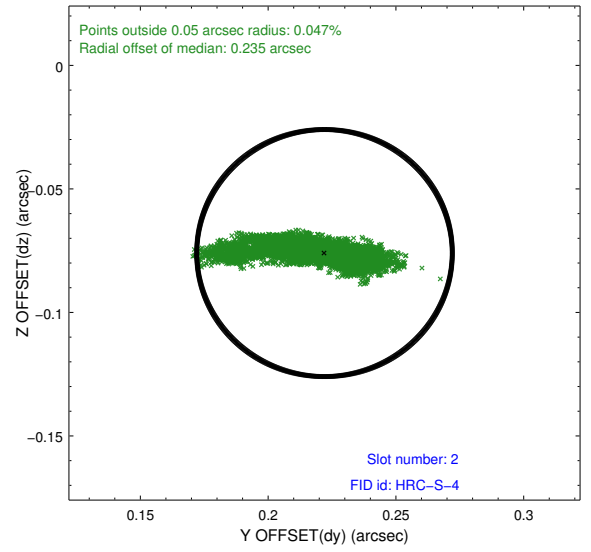
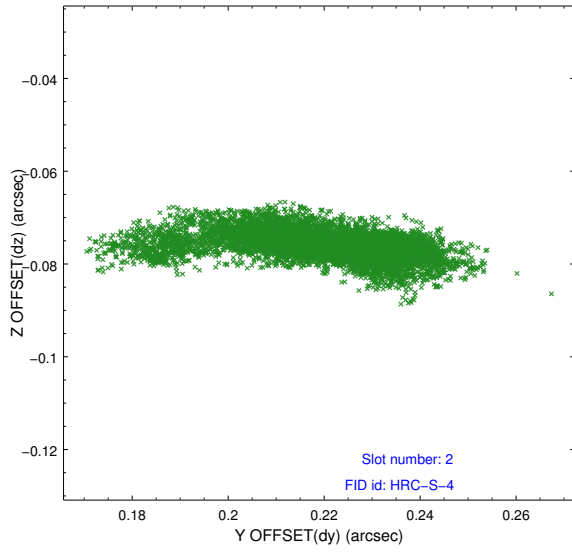
2.5.1 Slot 0



2.5.2 Slot 1

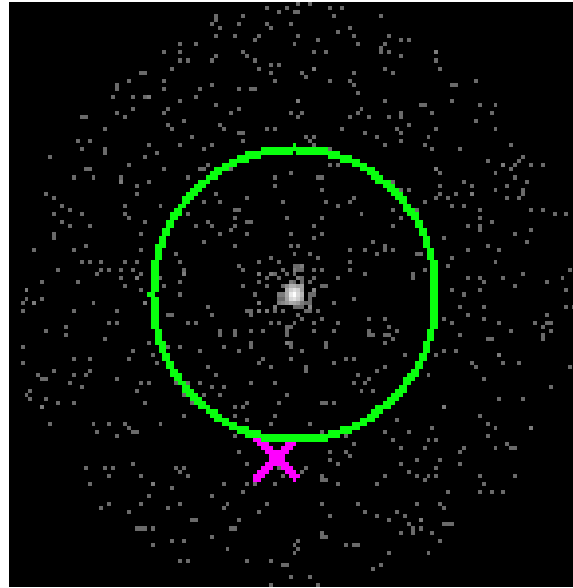


2.5.3 Slot 2



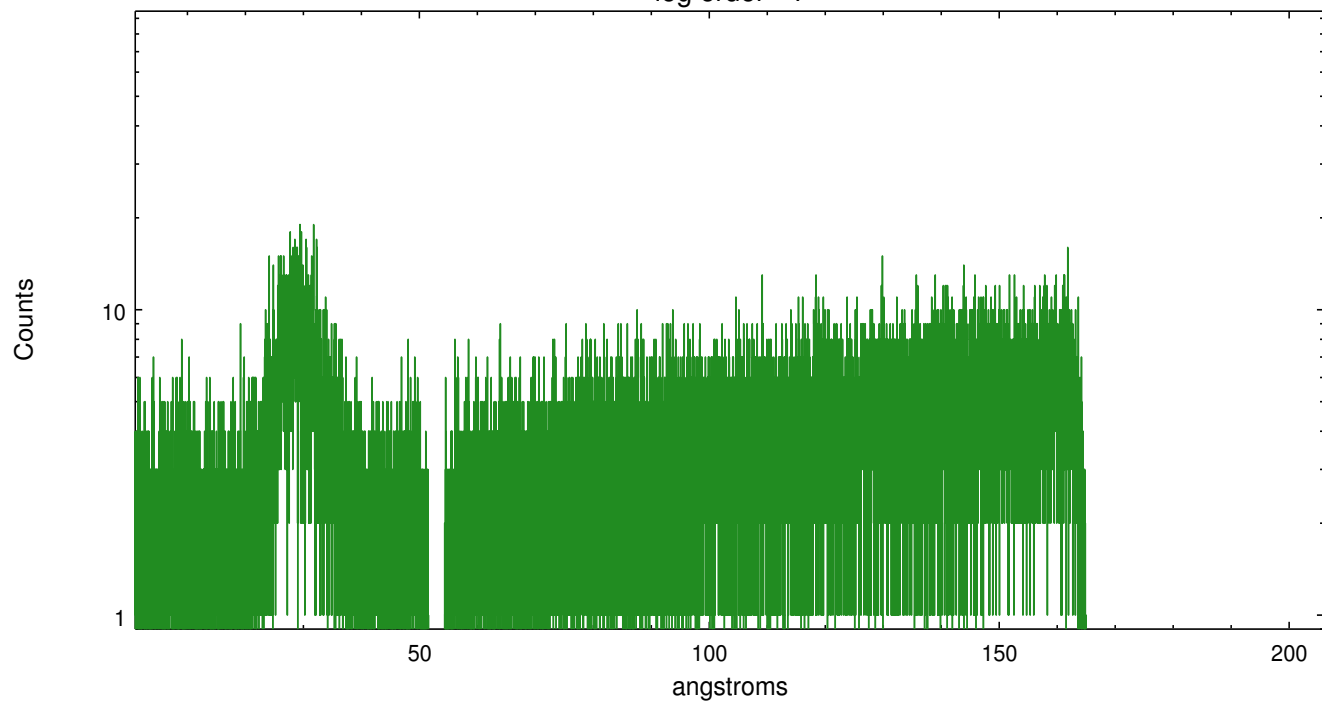
3 Gratings

3.1 LETG Arm

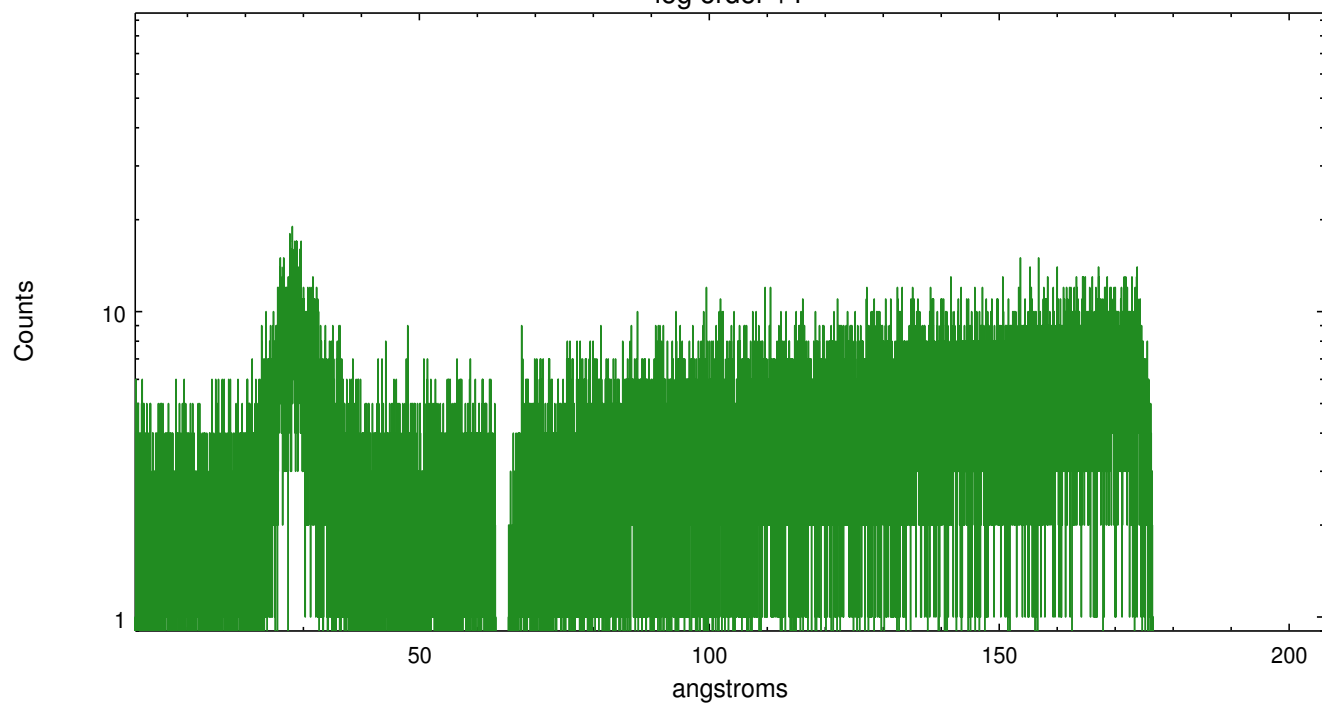


LETG Zero Order

leg order -1



leg order +1



A Summary

A.1 Status

V&V Scientist	Joy Nichols
V&V Date (YYYY-MM-DD)	2012.08.17
V&V Edition	1
V&V Disposition and Status	OK
V&V Charge Time	35.1500704

A.2 Comments