

# V&V Reference Report

## L2 ASCDS Version : 8.4.4

Observation 7942 - L2 Version 3  
Chandra X-Ray Center

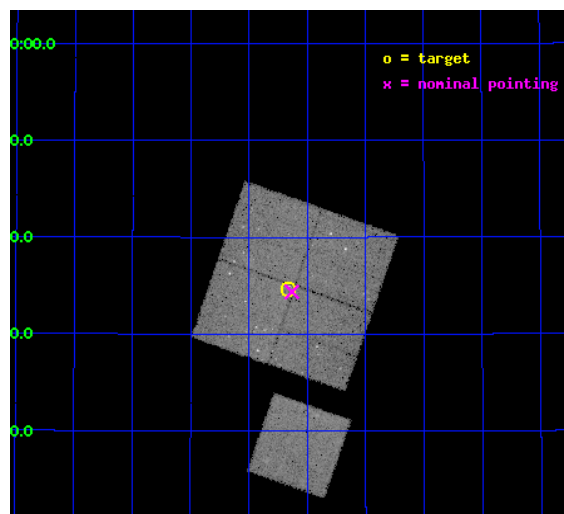
L2 Processing Date : Apr 24 2012

## Contents

<b>1</b>	<b>Front</b>	<b>2</b>
<b>2</b>	<b>OBI</b>	<b>3</b>
2.1	OBI . . . . .	3
2.1.1	Images . . . . .	3
2.1.2	Bias . . . . .	3
2.1.3	Parameters . . . . .	4
2.1.4	Events . . . . .	4
2.2	Compared Parameters . . . . .	5
2.3	Aspect . . . . .	6
2.4	Star Slots . . . . .	9
2.4.1	Slot 3 . . . . .	9
2.4.2	Slot 4 . . . . .	10
2.4.3	Slot 5 . . . . .	11
2.4.4	Slot 6 . . . . .	12
2.4.5	Slot 7 . . . . .	13
2.5	FID Slots . . . . .	14
2.5.1	Slot 0 . . . . .	14
2.5.2	Slot 1 . . . . .	15
2.5.3	Slot 2 . . . . .	16
<b>A</b>	<b>Summary</b>	<b>17</b>
A.1	Status . . . . .	17
A.2	Comments . . . . .	17

# 1 Front

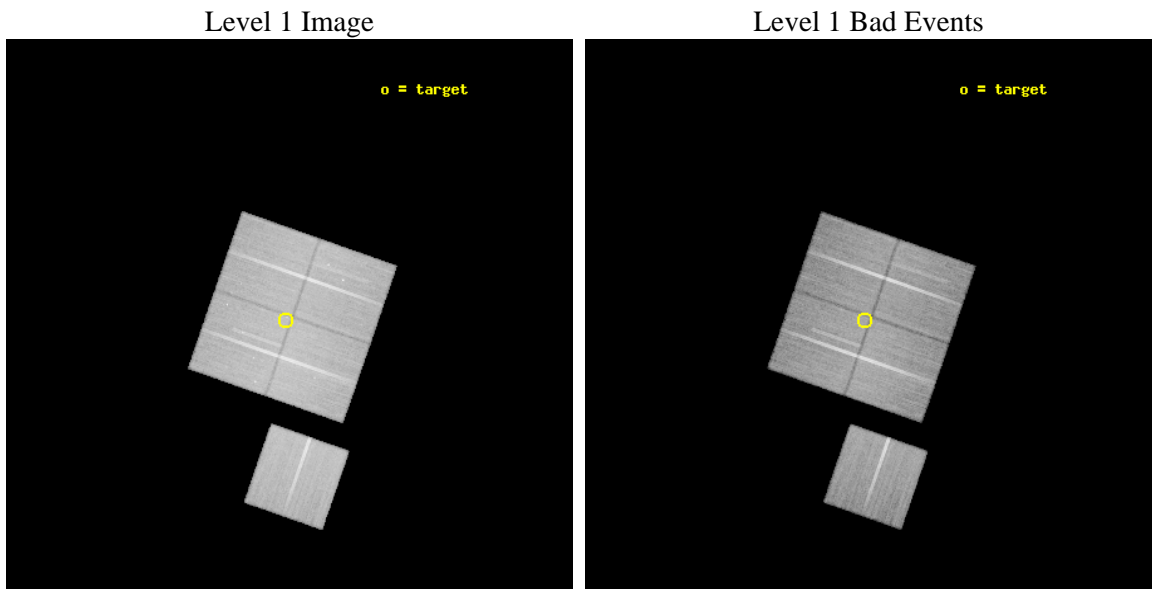
seq_num	900486	Sequence number
obs_id	7942	Observation id
title	Chandra Large Scale Survey of the NOAO Bootes Deep Field (A)	Propo
observer	Dr. Stephen Murray	Principal investigator
object	Bootes3 1	Source name
dtcycle	0	&#160
cycle	P	events from which exps? Prim/Second/Both
ra_targ	217.16608	Observer's specified target RA [deg]
dec_targ	35.577592	Observer's specified target Dec [deg]
ra_nom	217.15807703926	Nominal RA [deg]
dec_nom	35.572767705353	Nominal Dec [deg]
roll_nom	199.21350583272	Nominal Roll [deg]
revision	3	Processing version of data
ontime	38656.918296874	Sum of GTIs [s]
livetime	38151.837200516	Livetime [s]
ontime0	38660.059287131	Sum of GTIs [s]
ontime1	38660.059287071	Sum of GTIs [s]
ontime2	38660.059327006	Sum of GTIs [s]
ontime3	38656.918296874	Sum of GTIs [s]
ontime6	38653.77731657	Sum of GTIs [s]
l2events	121574	Number of level 2 events



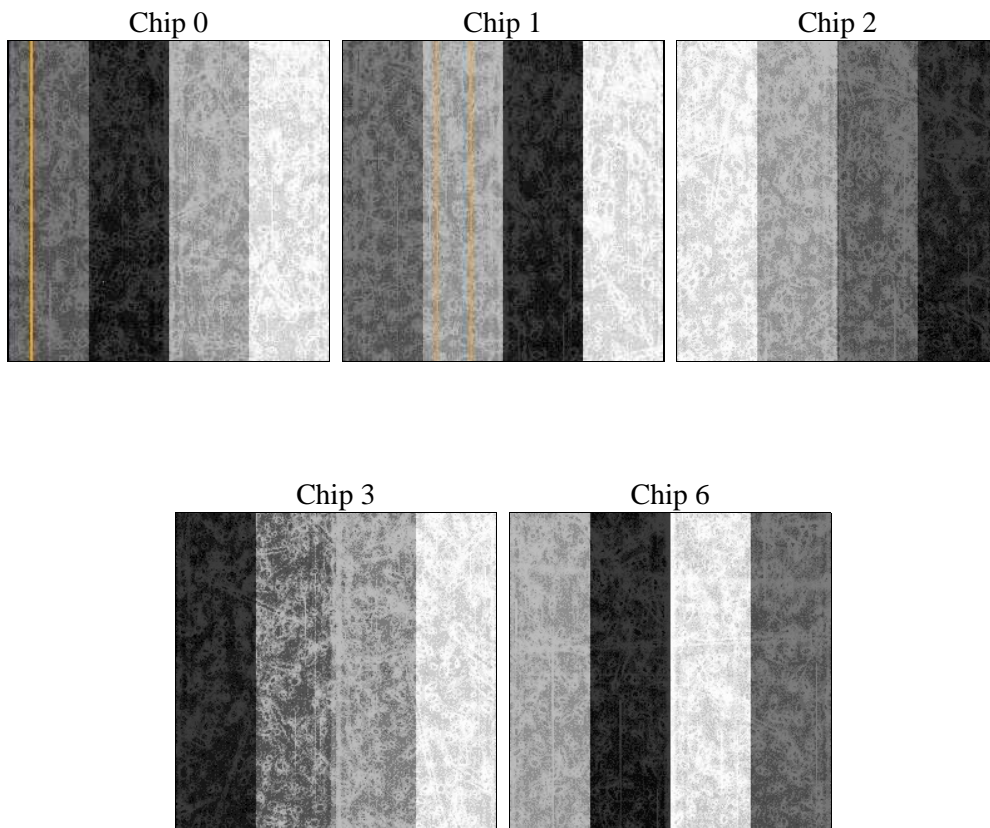
## 2 OBI

### 2.1 OBI

#### 2.1.1 Images



#### 2.1.2 Bias



### 2.1.3 Parameters

obi_num	1	Obi number	sched_exp_time	38506.063000	[s] Scheduled observation exposure time
ascdsver	8.4.4	Processing system revision	ontime	38656.918296874	Sum of GTIs [s]
caldsver	4.4.9	&#160	ontime0	38660.059287131	Sum of GTIs [s]
date	2012-04-24T23:03:27	Date and time of file creation	ontime1	38660.059287071	Sum of GTIs [s]
revision	3	Processing version of data	ontime2	38660.059327006	Sum of GTIs [s]
			ontime3	38656.918296874	Sum of GTIs [s]
			ontime6	38653.77731657	Sum of GTIs [s]
			l1events	1493499	Number of level 1 events

### 2.1.4 Events

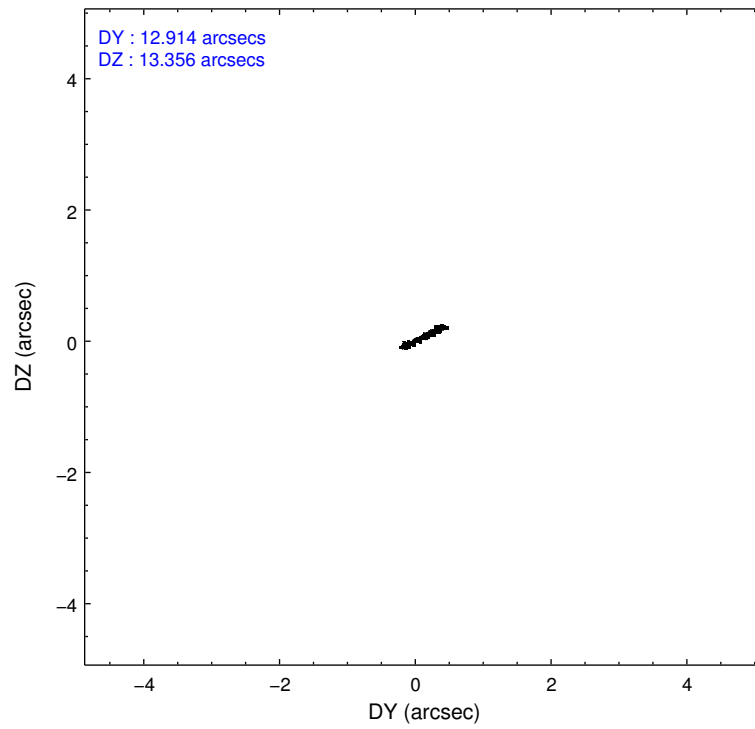
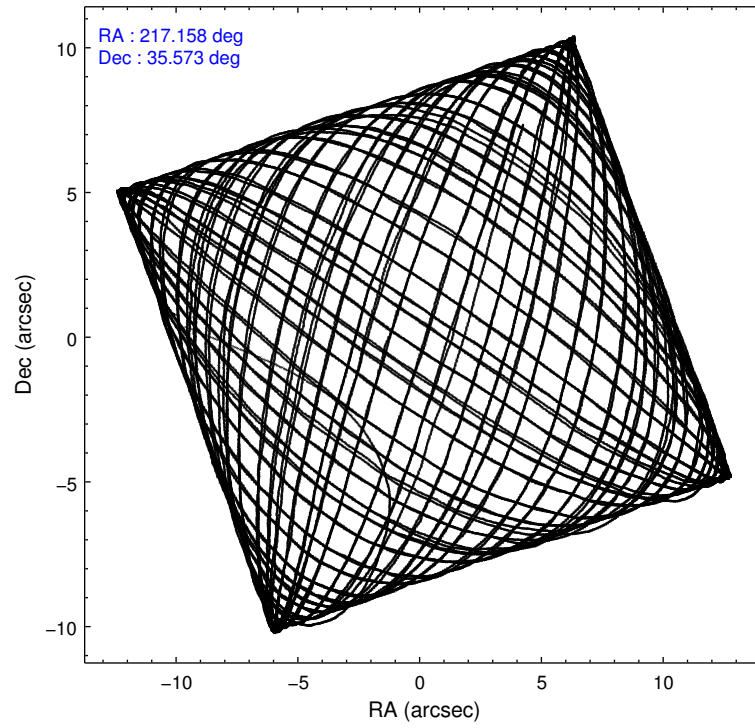
	ccd 0	ccd 1	ccd 2	ccd 3	ccd 6
level 1 events	288720	279415	323581	301552	300231
rejected events	258411	248706	295092	272204	270560
rejected %	89%	89%	91%	90%	90%

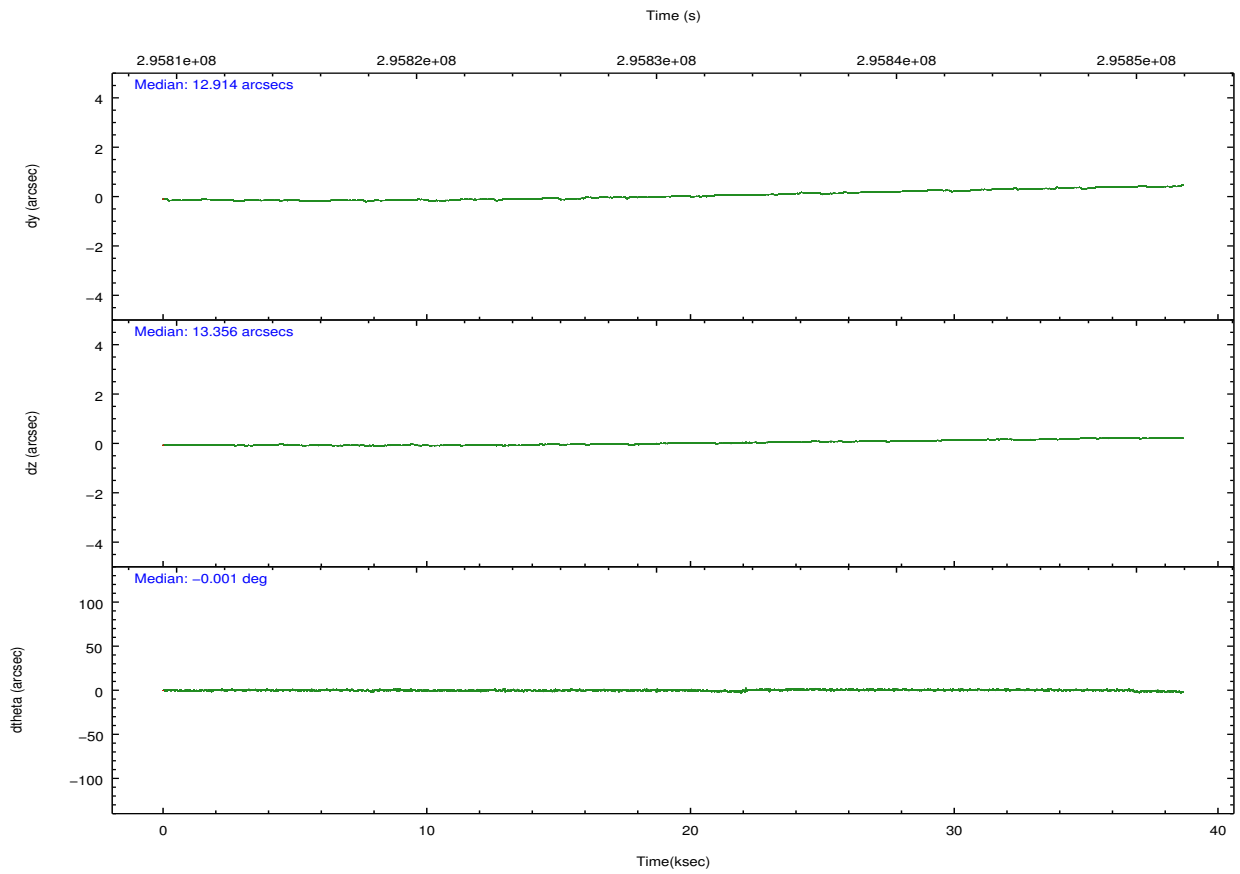
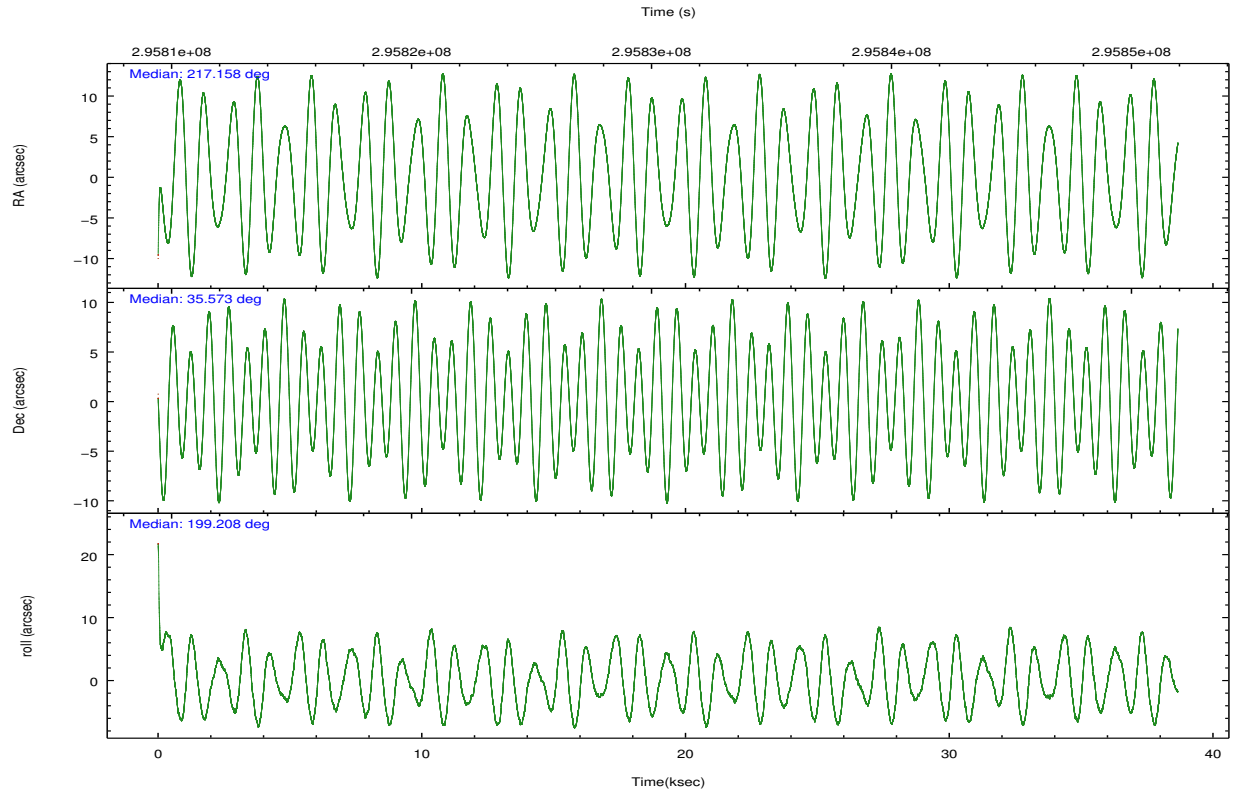
	ccd 0	ccd 1	ccd 2	ccd 3	ccd 6
grade 0 events	11424	11014	10660	11658	10691
	3%	3%	3%	3%	3%
grade 1 events	181	157	190	173	139
	0%	0%	0%	0%	0%
grade 2 events	7164	6775	6789	6175	6641
	2%	2%	2%	2%	2%
grade 3 events	3344	3519	3044	3208	3246
	1%	1%	0%	1%	1%
grade 4 events	3228	3431	3169	3099	3207
	1%	1%	0%	1%	1%
grade 5 events	8486	9725	8131	10232	9785
	2%	3%	2%	3%	3%
grade 6 events	5322	6155	4984	5384	6034
	1%	2%	1%	1%	2%
grade 7 events	249571	238639	286614	261623	260488
	86%	85%	88%	86%	86%

## 2.2 Compared Parameters

Parameter	Planned	Actual	Parameter	Planned	Actual
Instrument	ACIS	ACIS	Obspar format version number	7	7
Detector	ACIS-01236	ACIS-01236	Obspar file type	PREDICTED	ACTUAL
Grating	NONE	NONE	Obspar update status	NONE	UPDATED
Data mode	VFAINT	VFAINT	Number of optional ACIS chips dropped	0	0
Observation mode	POINTING	POINTING	On-chip summing requested	N	N
[deg] Pointing RA	217.180082	217.158077039261	Subarray requested	NONE	NONE
[deg] Pointing Dec	35.593673	35.57276770535304	Alternating exposures requested	N	N
[deg] Pointing Roll	198.992009	199.2135058327248	[s] Primary exposure time	0.000000	3.1
[mm] SIM focus pos	-0.782348	-0.7809083437167272			
[mm] SIM defocus	0	0.001439871863259334			
[mm] SIM translation stage pos	-233.592463	-233.5874344608287			
[mm] SIM translation stage offset	0	-0.005018542100998502			
[s] Observation start time (MET)	295811527.184000	295810293.44193			
Observation start date	2007-05-17T17:51:02	2007-05-17T17:31:33			
[s] Observation end time (MET)	295850033.184000	295850268.95634			
Observation end date	2007-05-18T04:32:48	2007-05-18T04:37:48			
Read mode	TIMED	TIMED			

## 2.3 Aspect



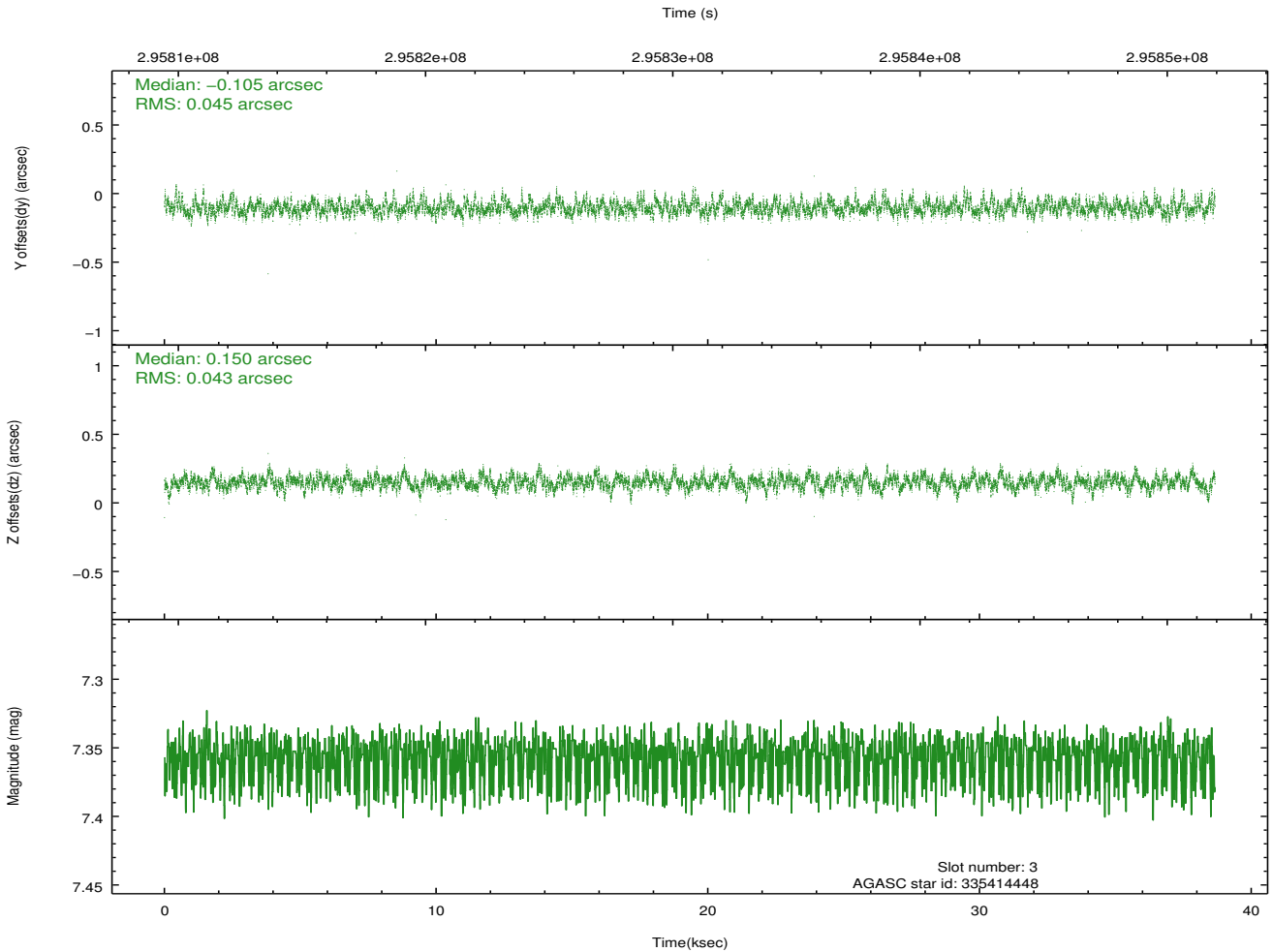
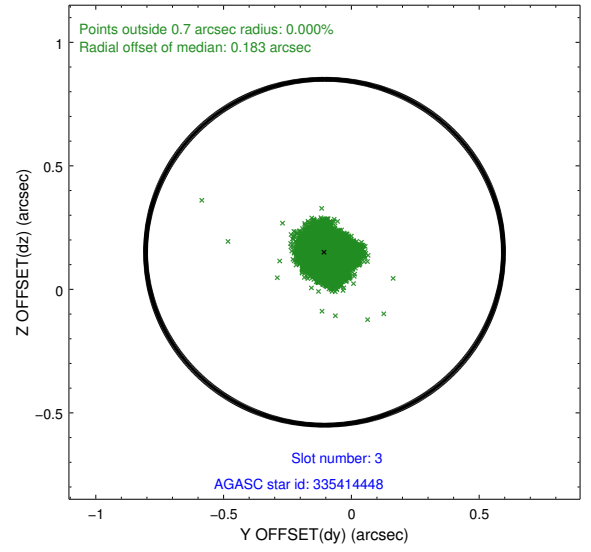
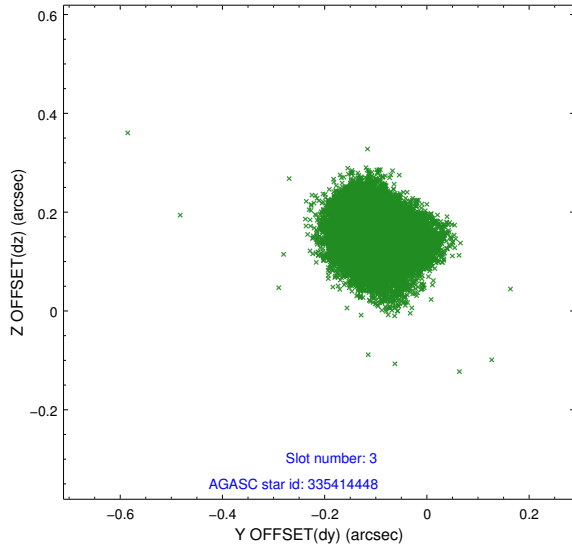


### Slot Statistics

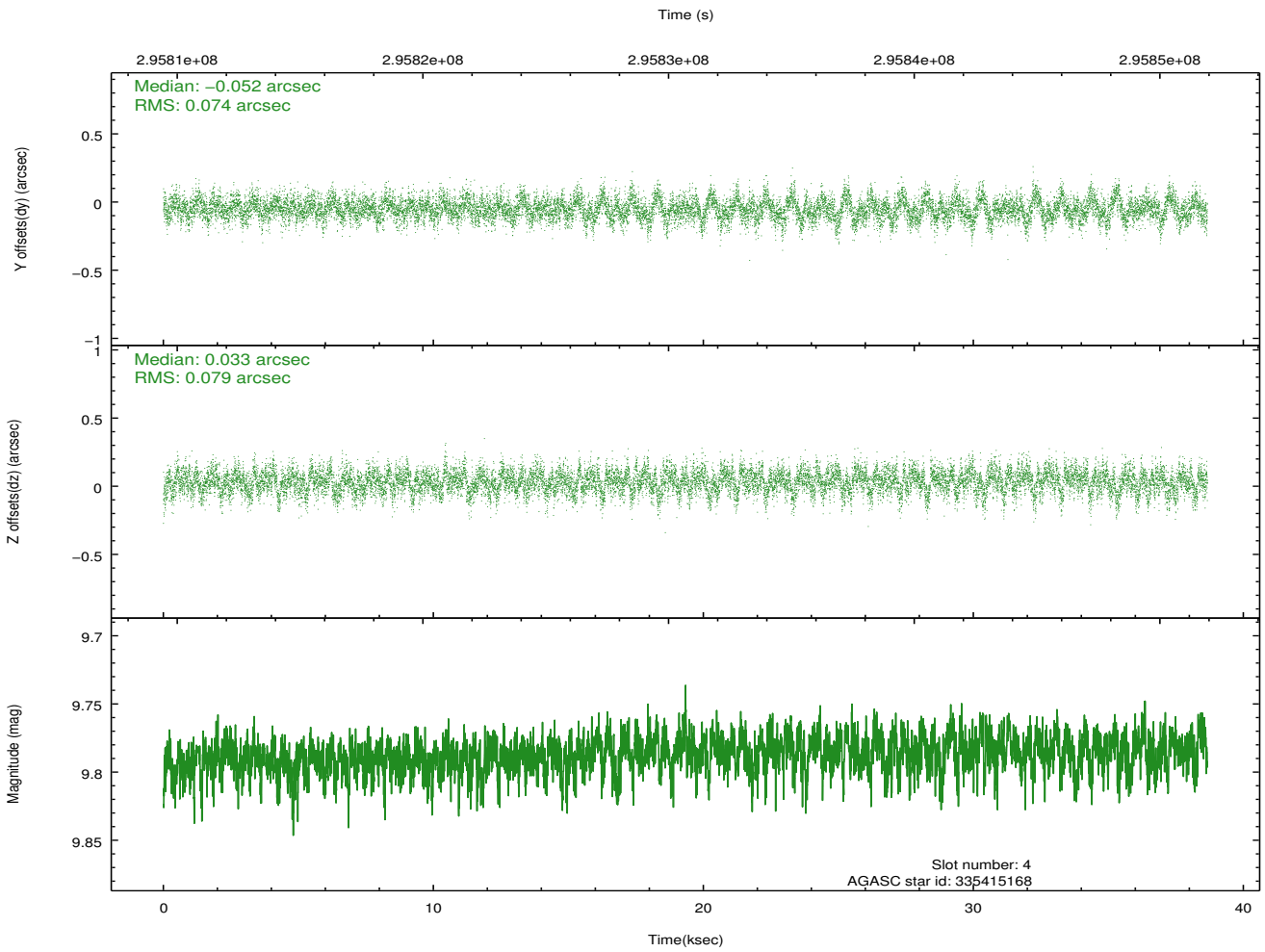
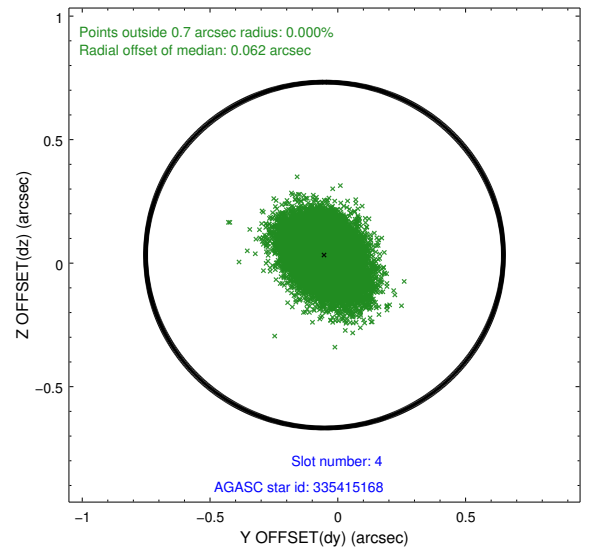
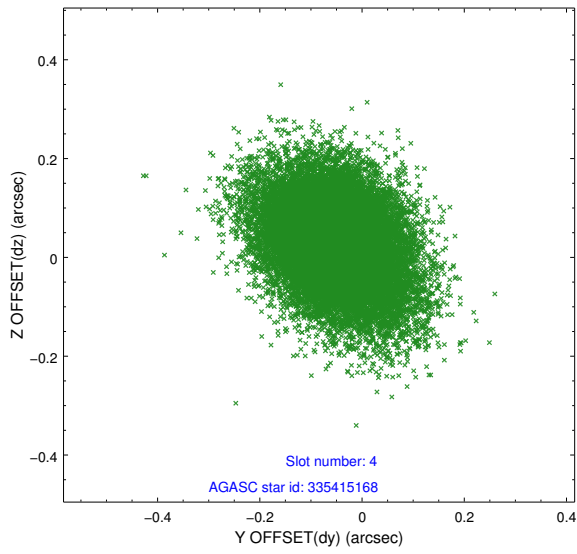
slot	status	id	mag	n_pts	med_dy	med_dz	dr1	dr2	ra	dec	mean_y	mean_z
0	FID	ACIS-I-1	7.23	9432	-0.007	0.024	0.013	0.022	0.000000	0.000000	926.53	-836.93
1	FID	ACIS-I-4	7.17	9430	0.214	0.011	0.011	0.019	0.000000	0.000000	2146.84	1062.83
2	FID	ACIS-I-5	7.22	9432	-0.305	0.036	0.010	0.017	0.000000	0.000000	-1821.71	1060.80
3	GUIDE	335414448	7.36	18859	-0.105	0.150	0.067	0.107	216.992261	35.577204	539.13	-122.22
4	GUIDE	335415168	9.79	18841	-0.052	0.033	0.113	0.192	217.681296	35.301767	-1050.65	1469.06
5	GUIDE	335417968	9.40	18839	0.032	0.003	0.096	0.152	217.358149	35.055285	134.53	2003.33
6	GUIDE	335419120	9.62	18844	0.300	-0.134	0.132	0.222	216.521861	35.833546	1534.19	-1447.51
7	GUIDE	335421608	9.19	18848	-0.187	-0.045	0.091	0.146	217.691874	36.359353	-2300.62	-2127.70

## 2.4 Star Slots

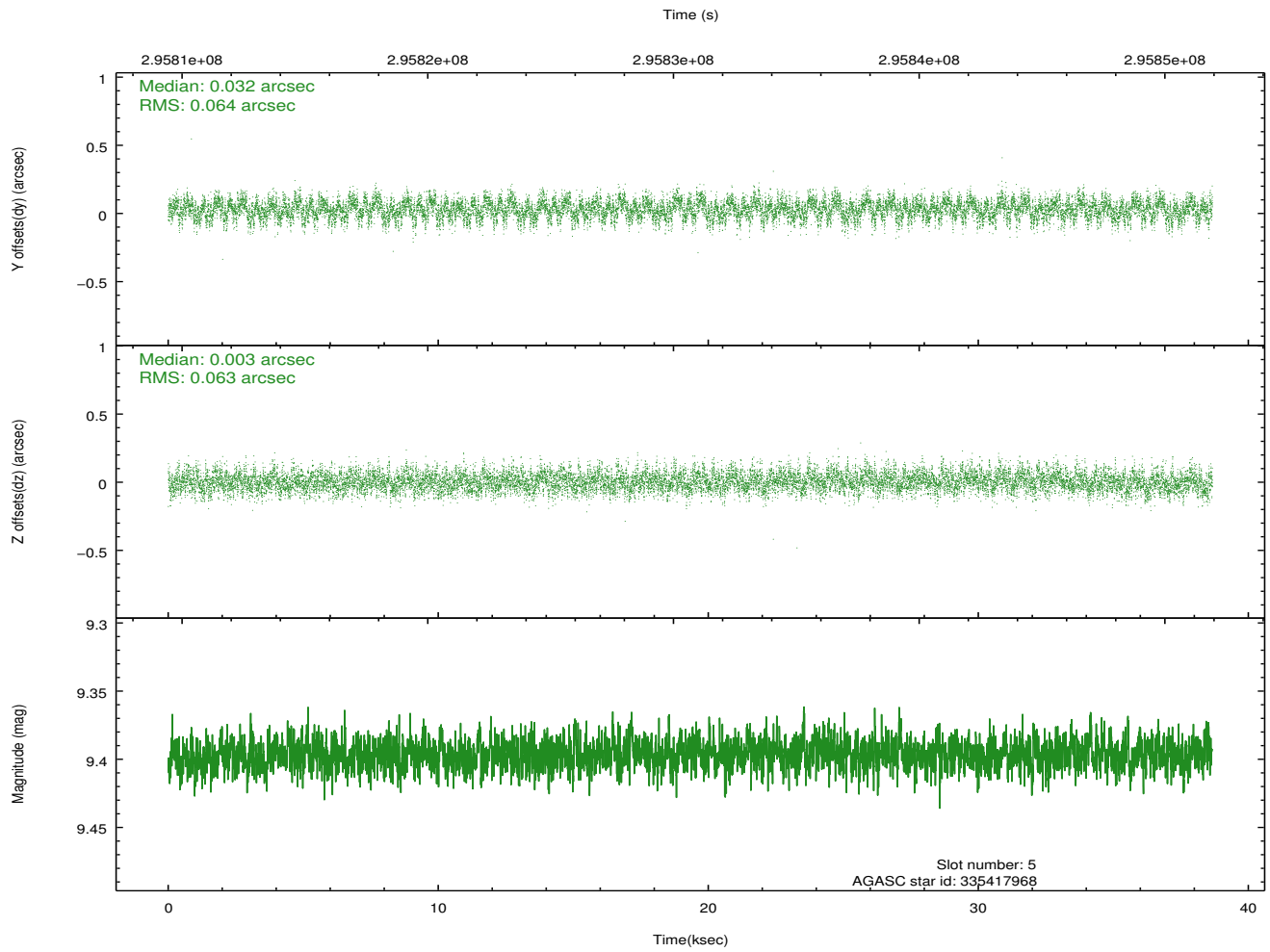
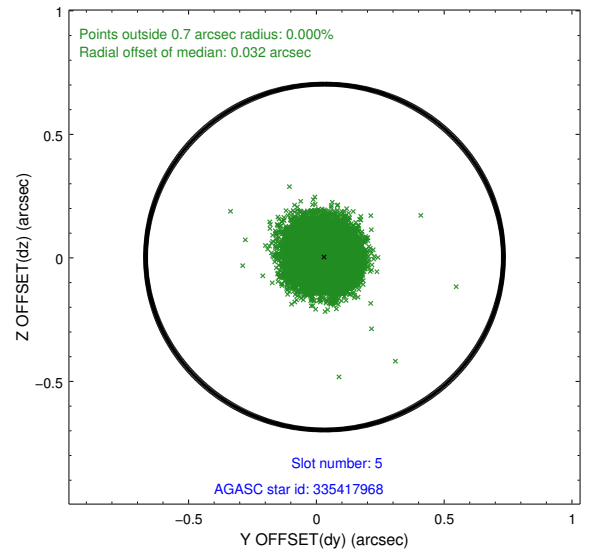
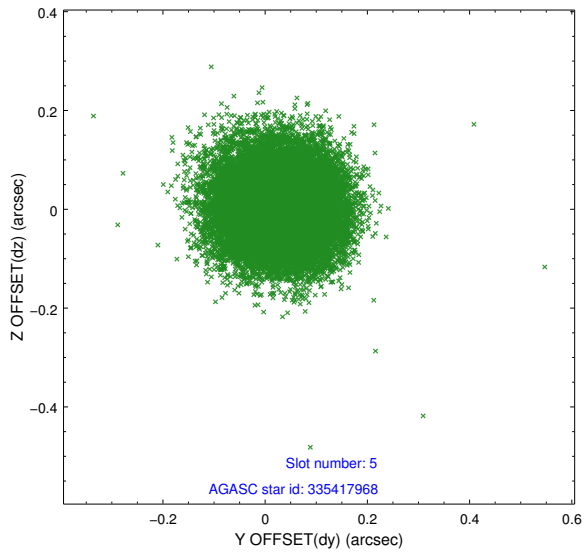
### 2.4.1 Slot 3



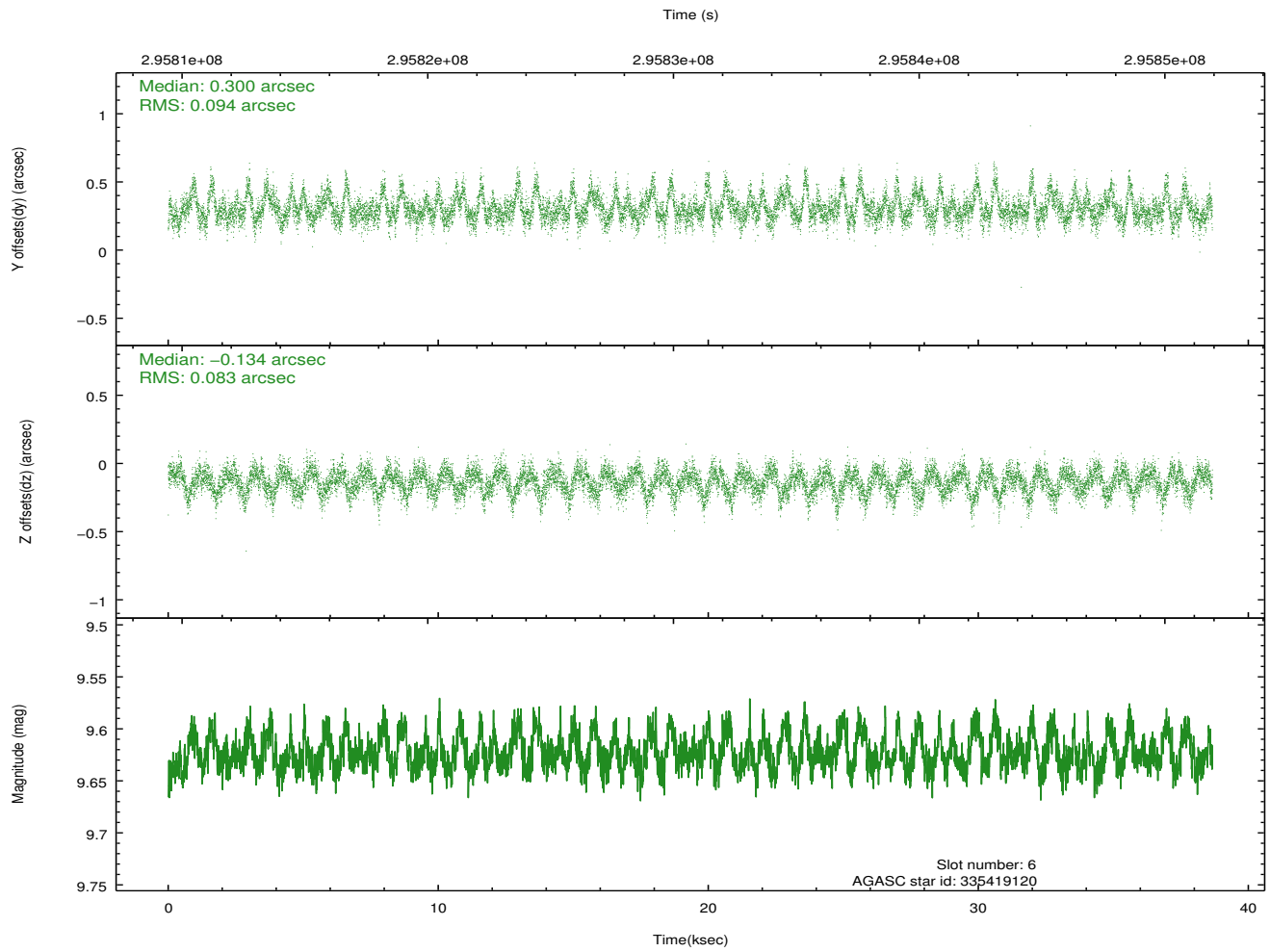
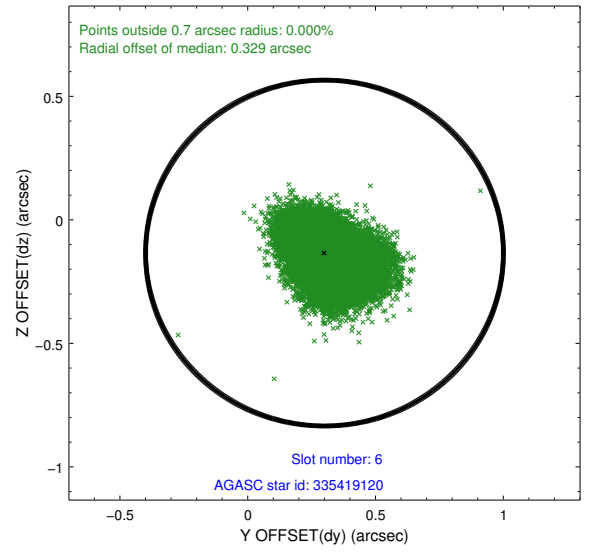
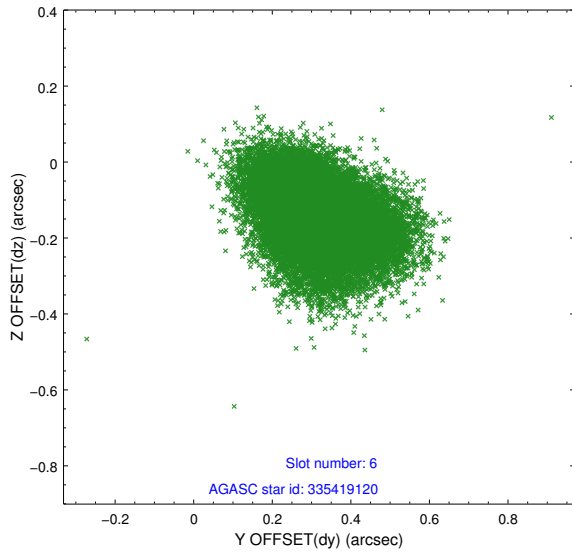
### 2.4.2 Slot 4



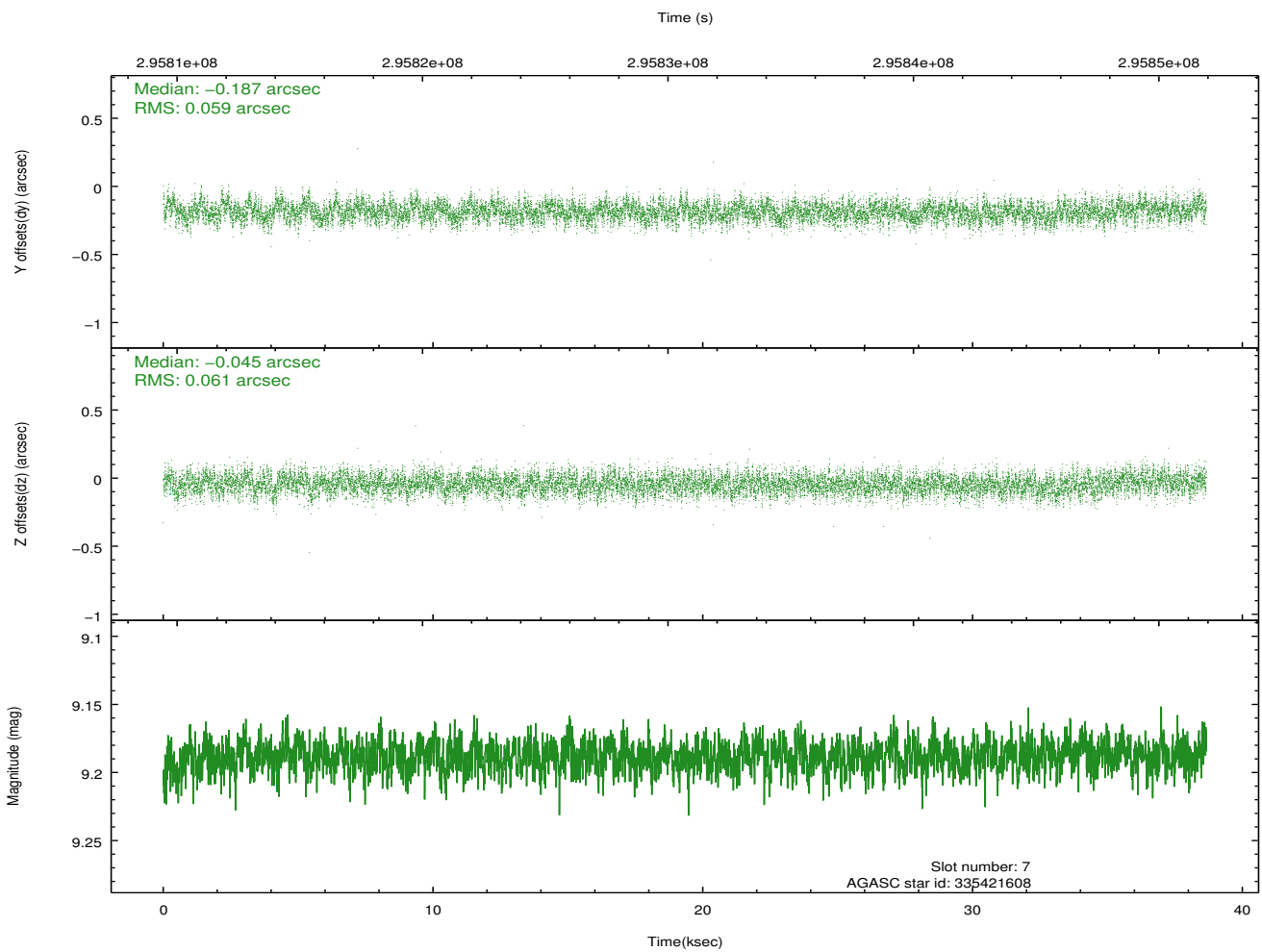
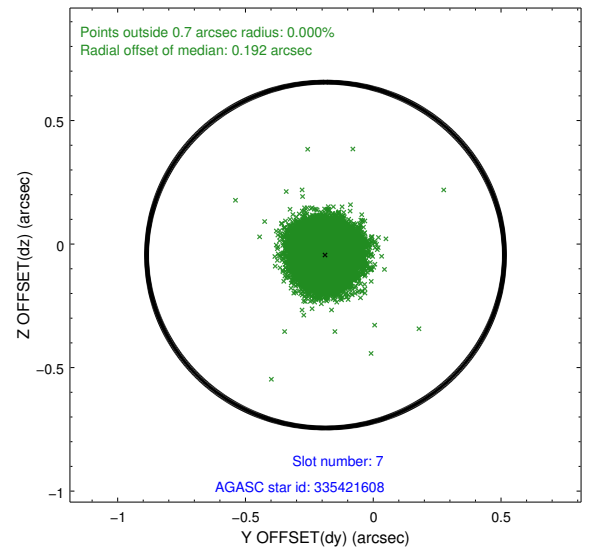
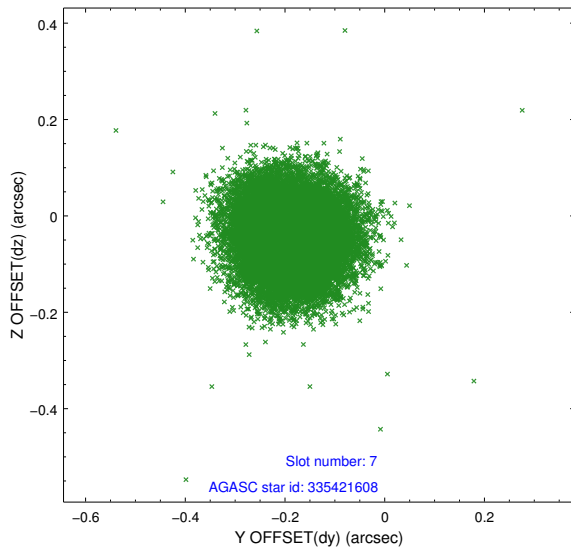
### 2.4.3 Slot 5



### 2.4.4 Slot 6

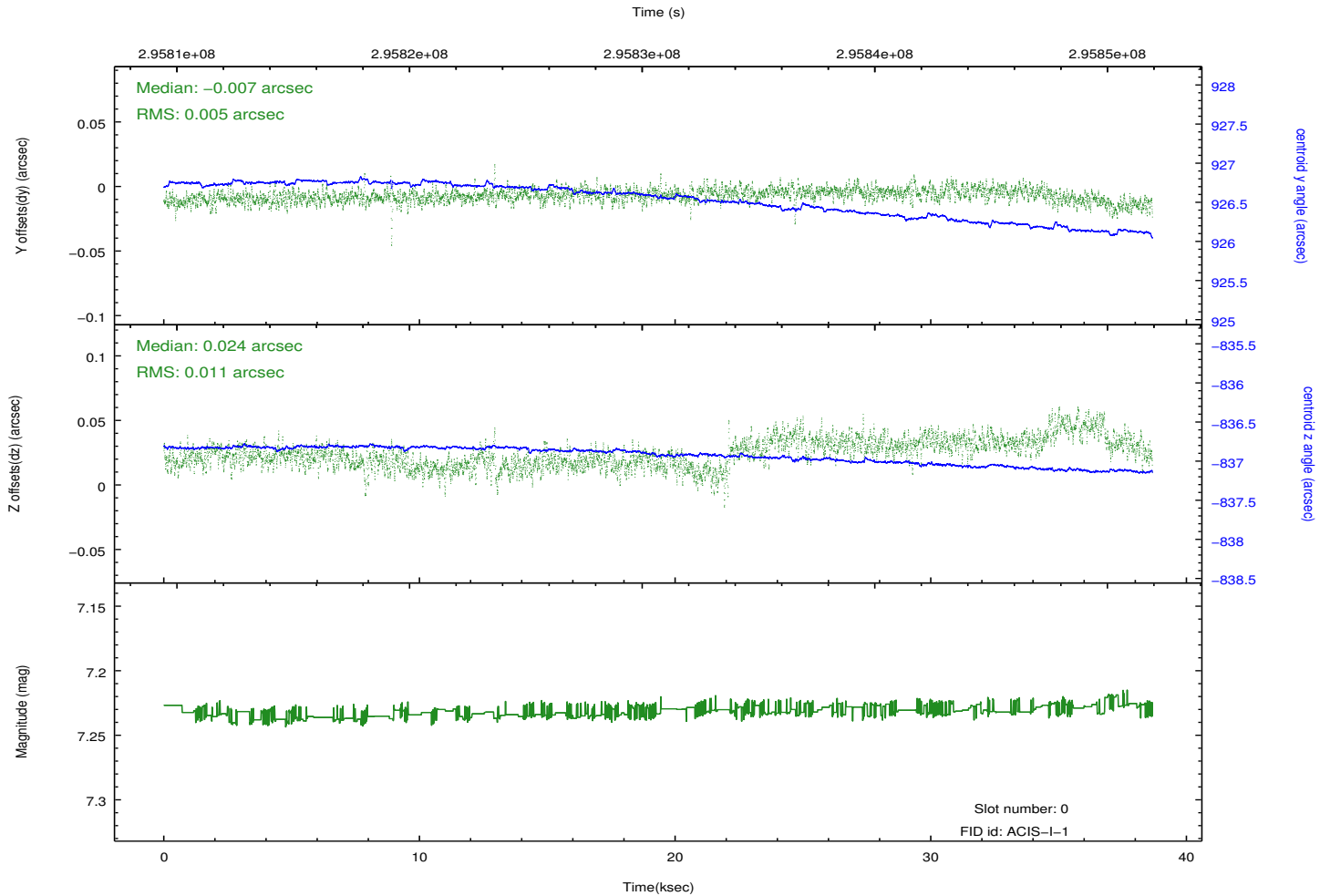
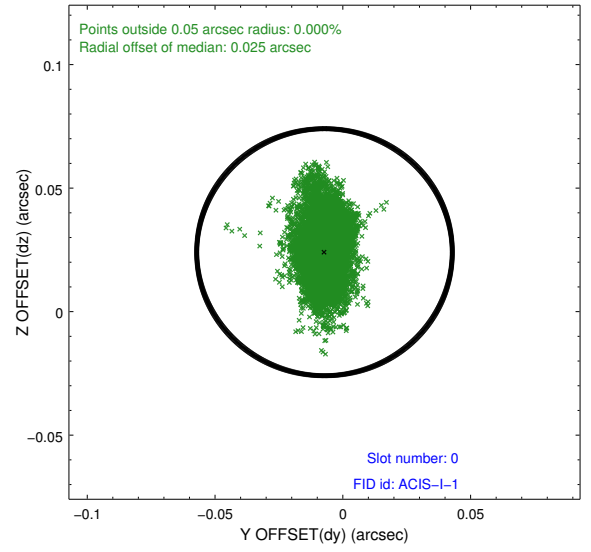
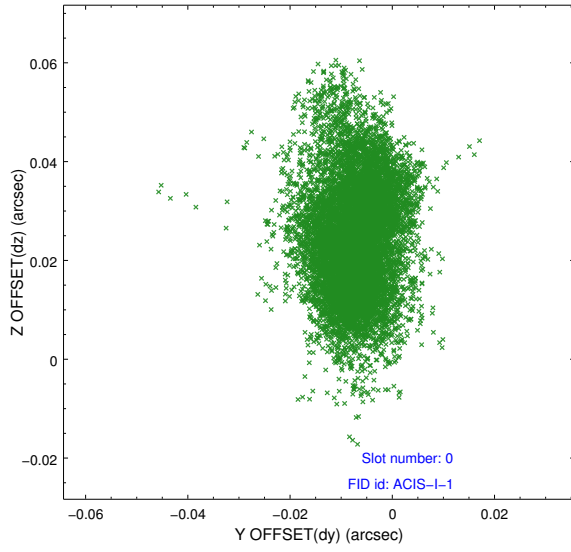


## 2.4.5 Slot 7

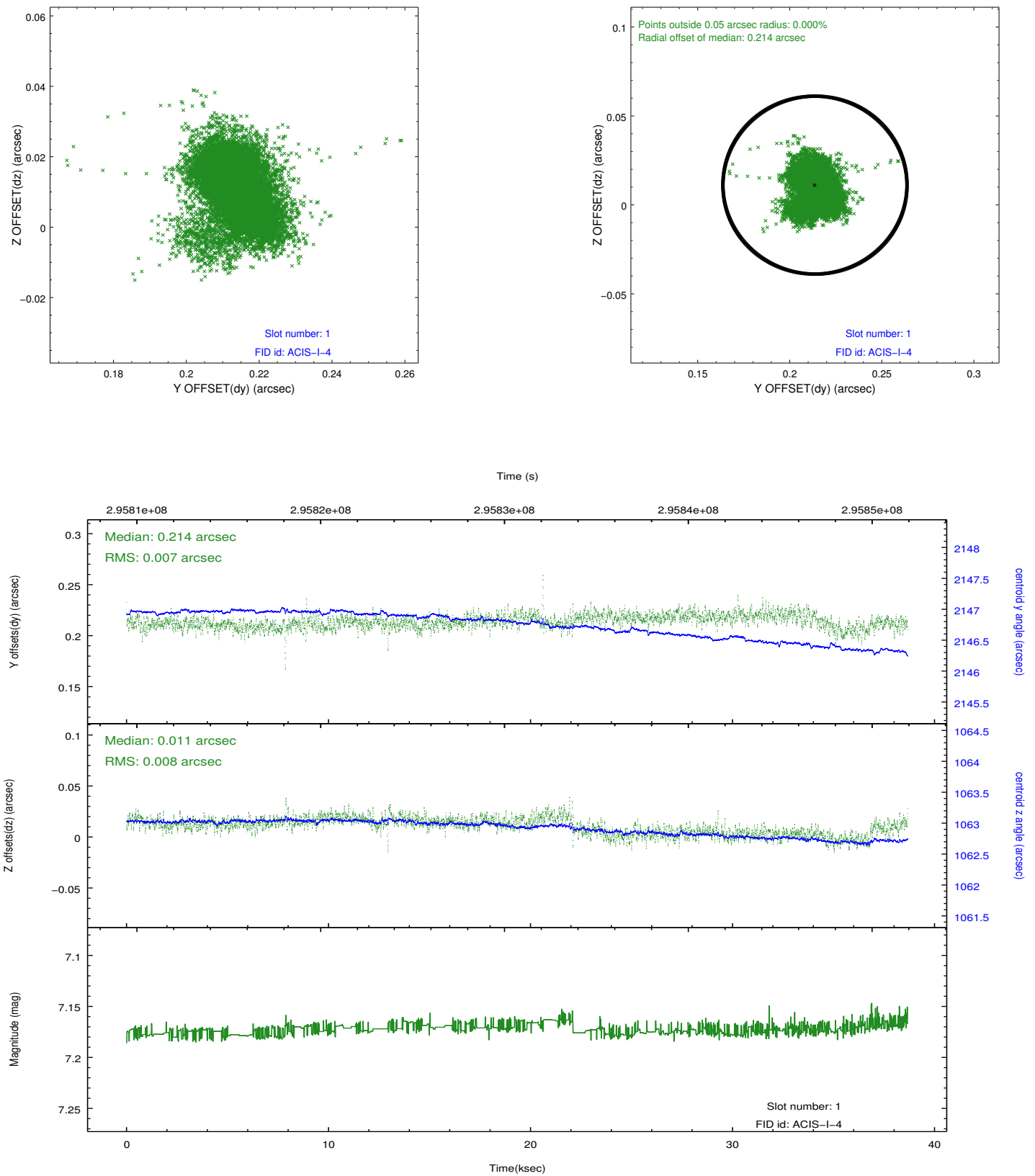


## 2.5 FID Slots

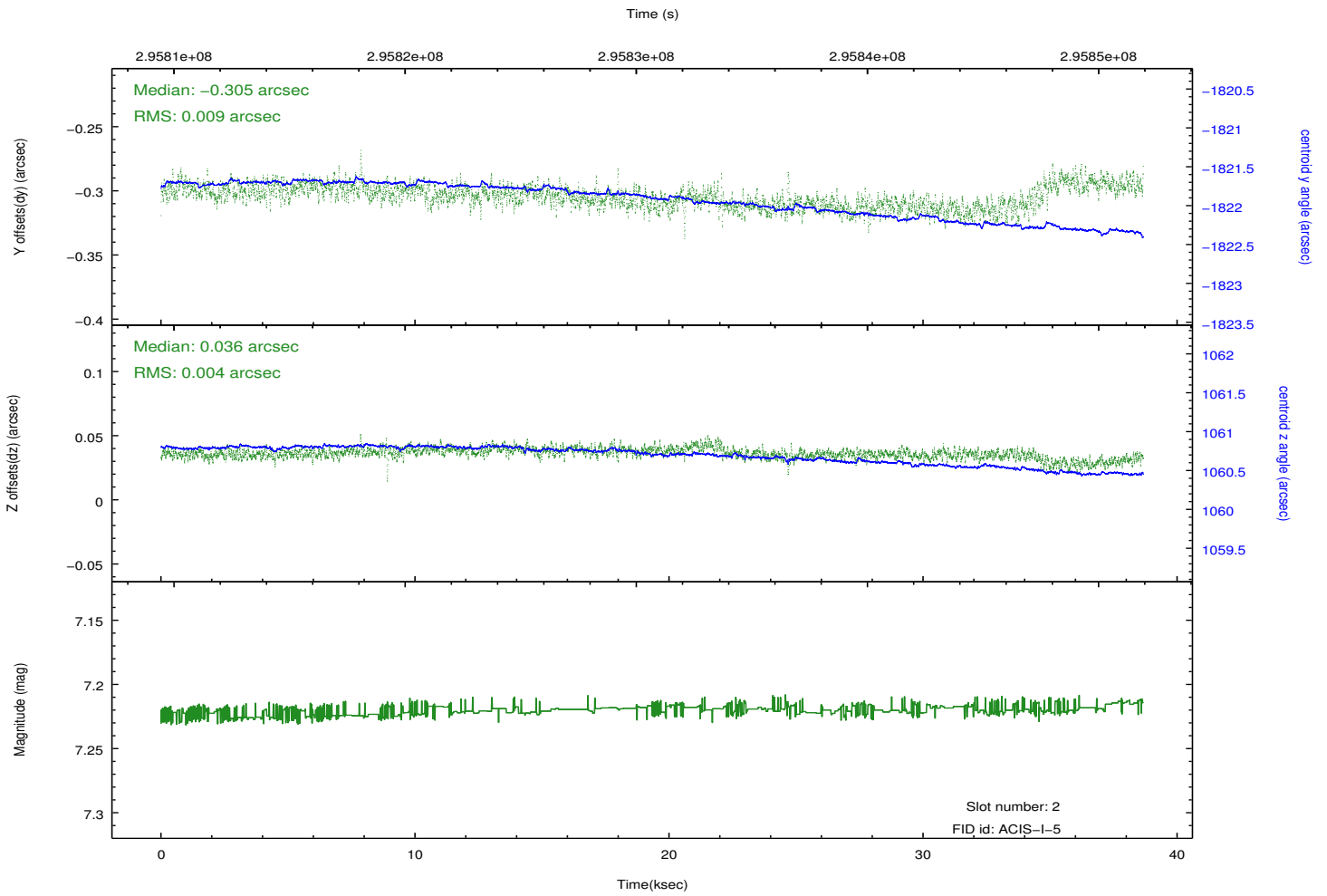
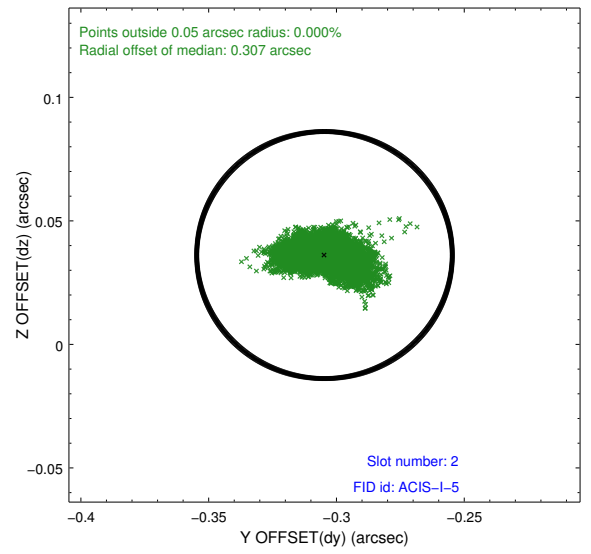
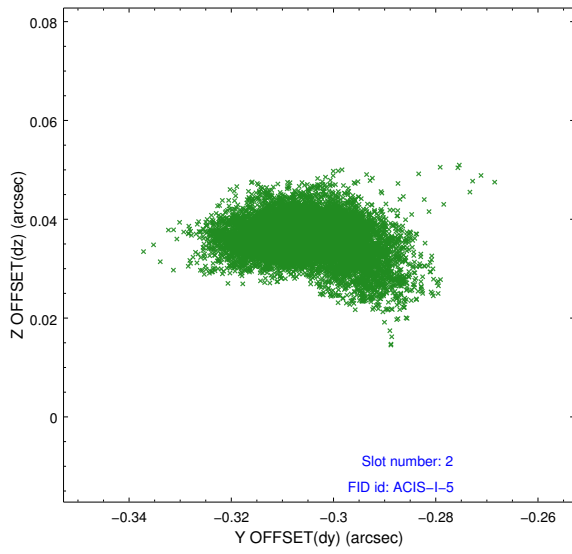
### 2.5.1 Slot 0



## 2.5.2 Slot 1



### 2.5.3 Slot 2



## A Summary

### A.1 Status

V&V Scientist	Jen Lauer
V&V Date (YYYY-MM-DD)	2012.04.25
V&V Edition	1
V&V Disposition and Status	OK
V&V Charge Time	38.6569182

### A.2 Comments