

V&V Reference Report

L2 ASCDS Version : 8.4.3.1

Observation 8002 - L2 Version 3
Chandra X-Ray Center

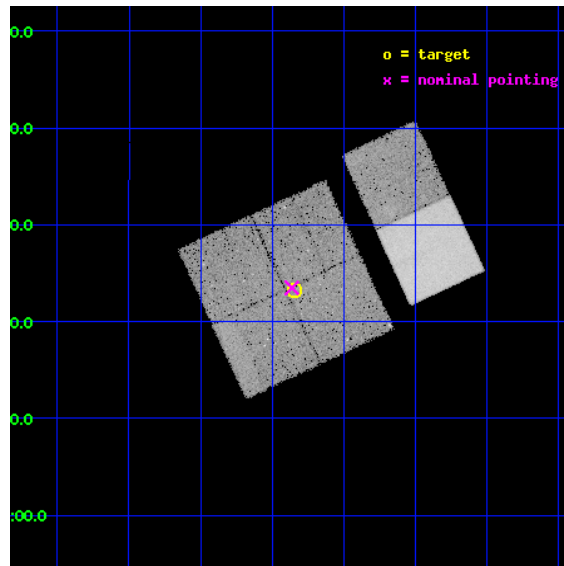
L2 Processing Date : Apr 15 2012

Contents

1	Front	2
2	OBI	3
2.1	OBI	3
2.1.1	Images	3
2.1.2	Bias	3
2.1.3	Parameters	4
2.1.4	Events	4
2.2	Compared Parameters	5
2.3	Aspect	6
2.4	Star Slots	9
2.4.1	Slot 3	9
2.4.2	Slot 4	10
2.4.3	Slot 5	11
2.4.4	Slot 6	12
2.4.5	Slot 7	13
2.5	FID Slots	14
2.5.1	Slot 0	14
2.5.2	Slot 1	15
2.5.3	Slot 2	16
A	Summary	17
A.1	Status	17
A.2	Comments	17

1 Front

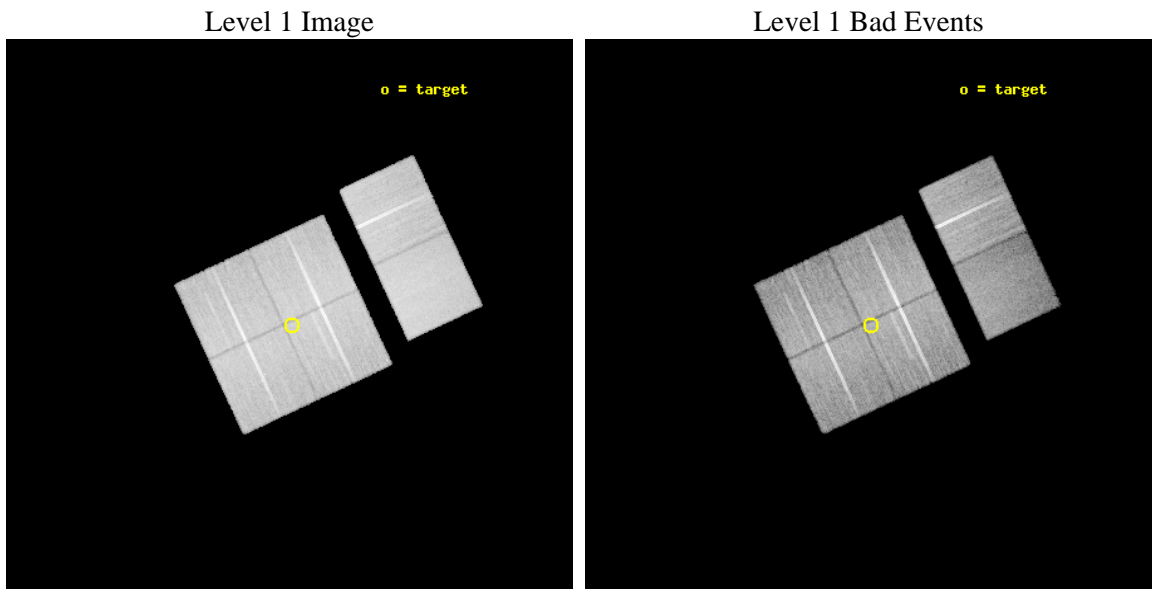
seq_num	900546	Sequence number
obs_id	8002	Observation id
title	THE CHANDRA-COSMOS SURVEY	Proposal title
observer	Dr. Martin Elvis	Principal investigator
object	C-COSMOS2-4	Source name
dtcycle	0	
cycle	P	events from which exps? Prim/Second/Both
ra_targ	150.087083	Observer's specified target RA [deg]
dec_targ	2.388217	Observer's specified target Dec [deg]
ra_nom	150.09052397718	Nominal RA [deg]
dec_nom	2.3914496703806	Nominal Dec [deg]
roll_nom	65.008550388519	Nominal Roll [deg]
revision	3	Processing version of data
ontime	30025.518017054	Sum of GTIs [s]
livetime	29645.316828725	Livetime [s]
ontime0	30031.999888182	Sum of GTIs [s]
ontime1	30031.999888182	Sum of GTIs [s]
ontime2	30031.999888182	Sum of GTIs [s]
ontime3	30025.518017054	Sum of GTIs [s]
ontime6	30028.758897901	Sum of GTIs [s]
ontime7	30031.999888182	Sum of GTIs [s]
l2events	187716	Number of level 2 events



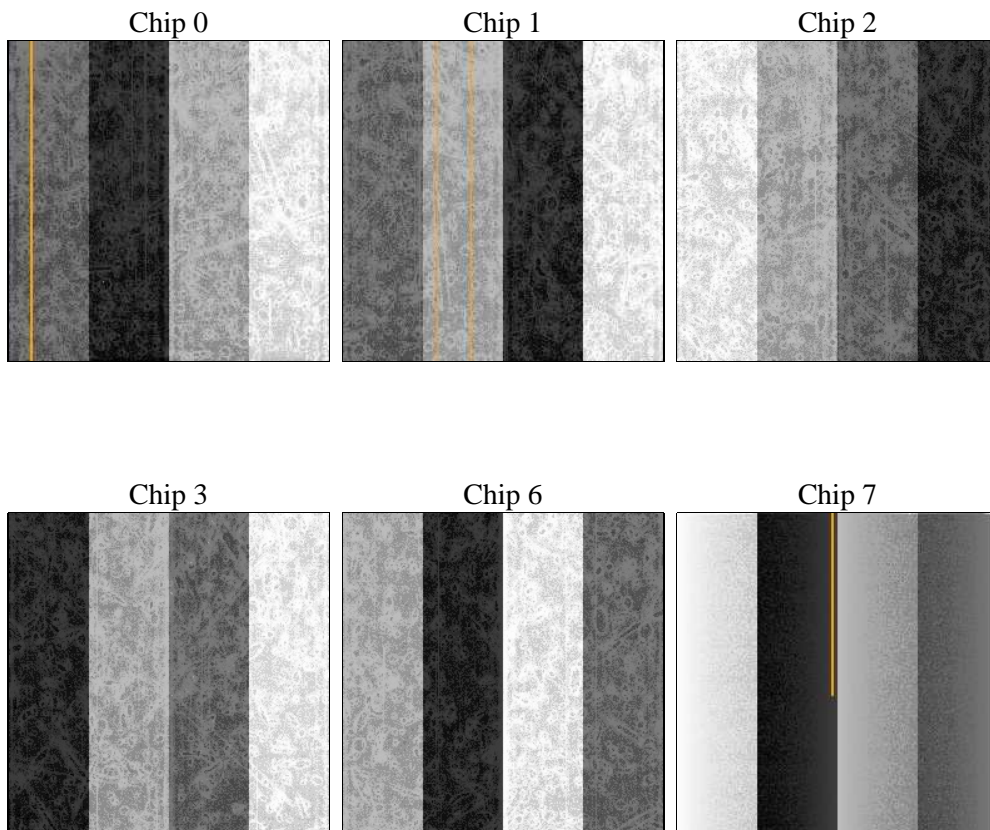
2 OBI

2.1 OBI

2.1.1 Images



2.1.2 Bias



2.1.3 Parameters

obi_num	0	Obi number	sched_exp_time	30000.000000	[s] Scheduled observation exposure time
ascdsver	8.4.3.1	Processing system revision	ontime	30025.518017054	Sum of GTIs [s]
caldsver	4.4.9	 	ontime0	30031.999888182	Sum of GTIs [s]
date	2012-04-15T16:19:40	Date and time of file creation	ontime1	30031.999888182	Sum of GTIs [s]
revision	3	Processing version of data	ontime2	30031.999888182	Sum of GTIs [s]
			ontime3	30025.518017054	Sum of GTIs [s]
			ontime6	30028.758897901	Sum of GTIs [s]
			ontime7	30031.999888182	Sum of GTIs [s]
			l1events	1222501	Number of level 1 events

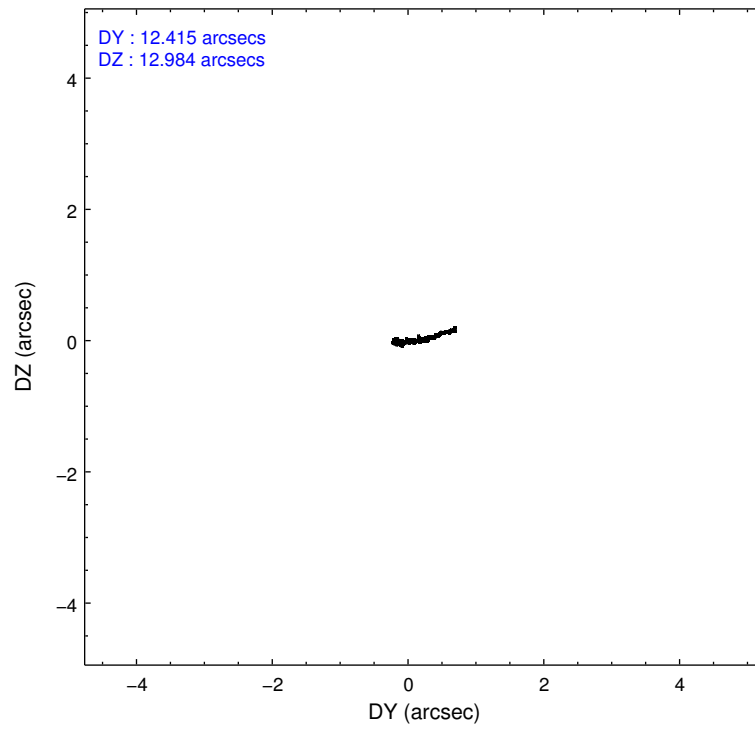
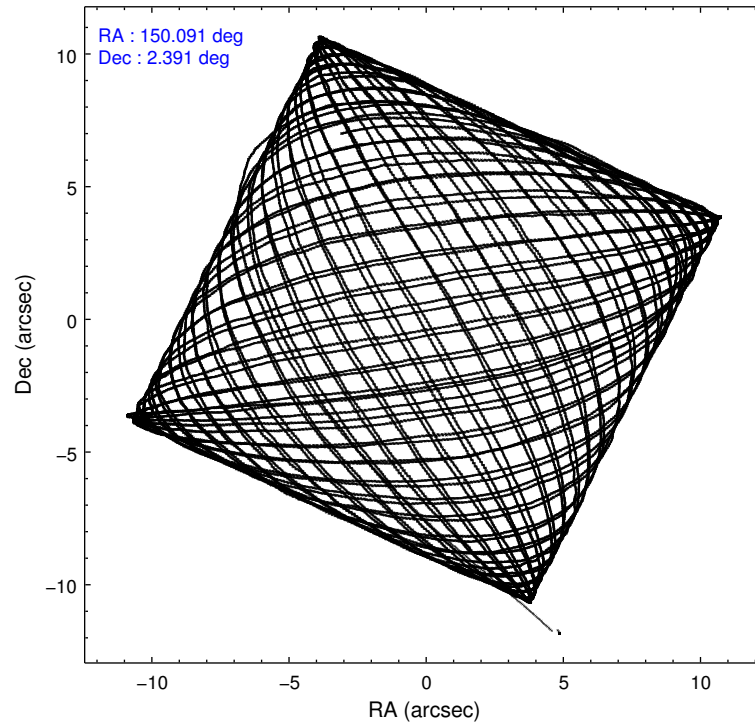
2.1.4 Events

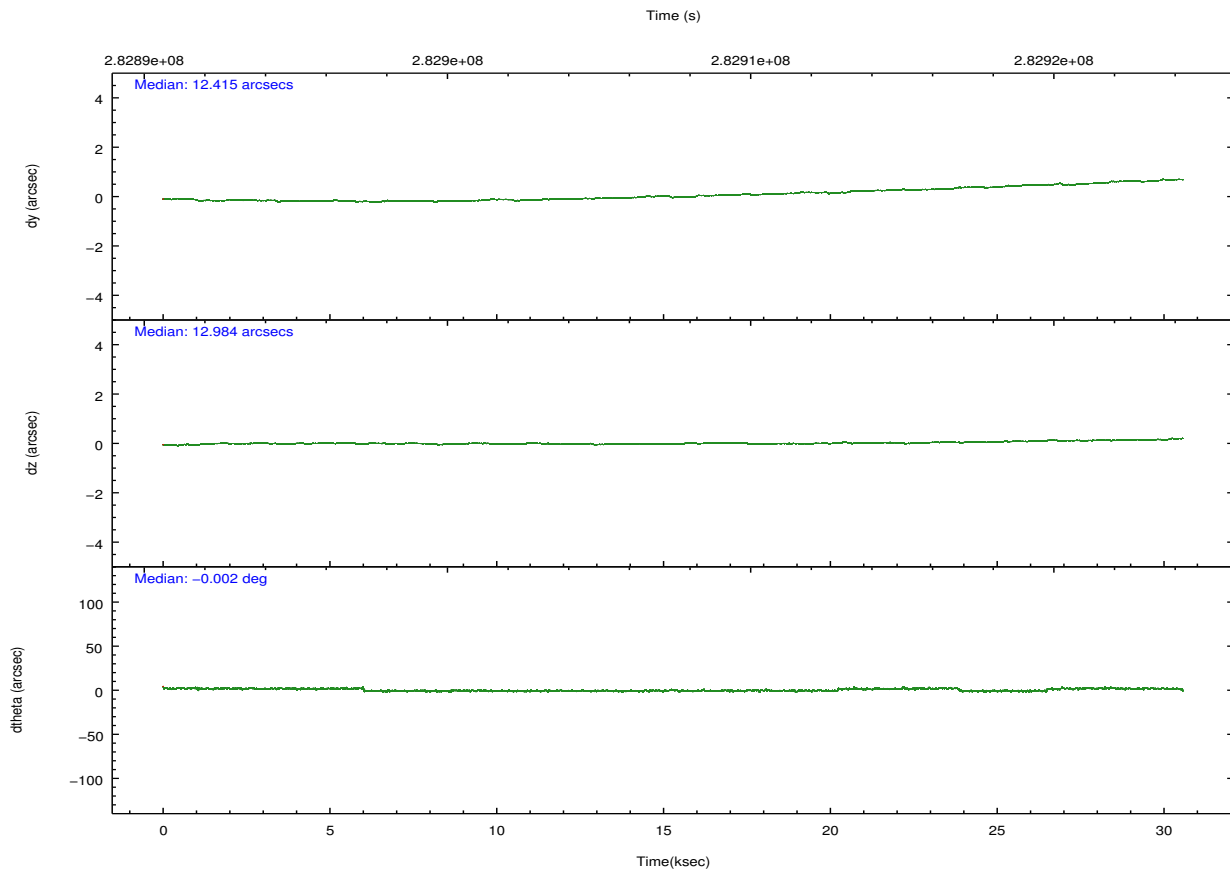
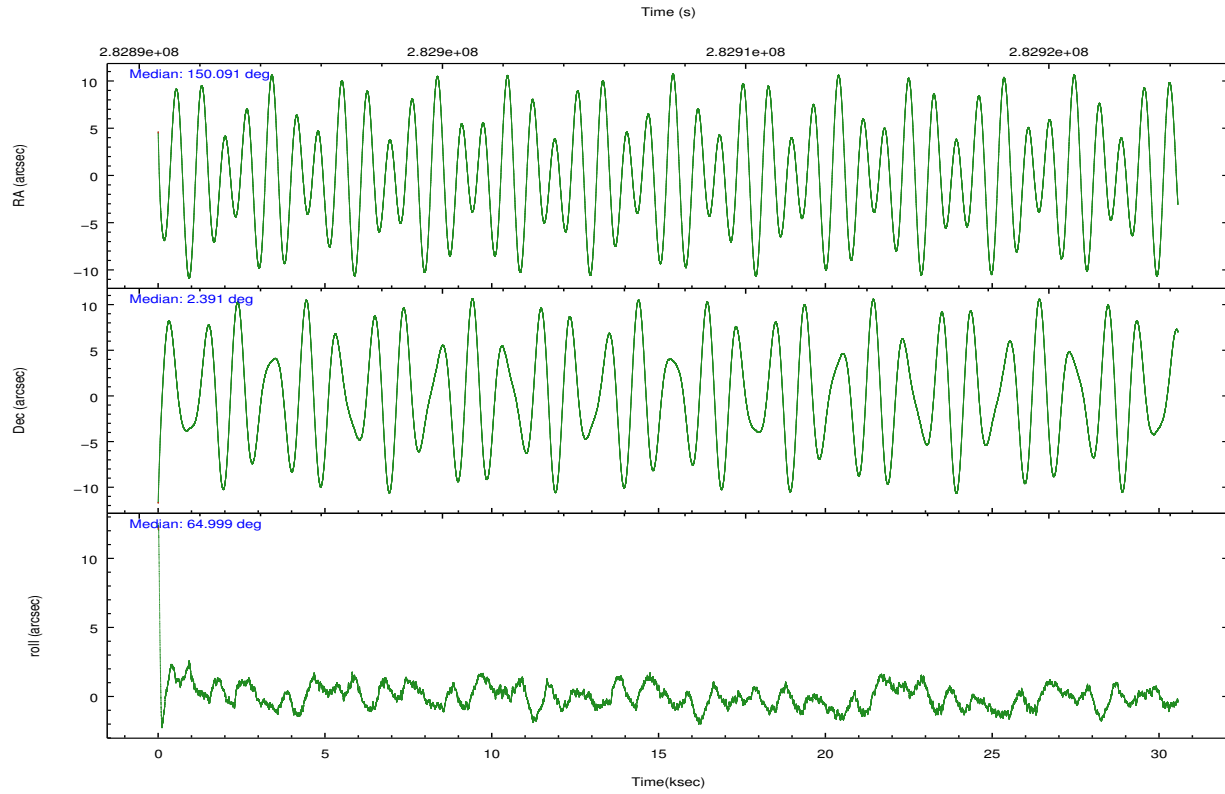
	ccd 0	ccd 1	ccd 2	ccd 3	ccd 6	ccd 7		ccd 0	ccd 1	ccd 2	ccd 3	ccd 6	ccd 7
level 1 events	189614	191360	208852	199093	207144	226438	grade 0 events	7169	8479	7379	7208	7593	9814
rejected events	169251	168048	188655	179494	185714	122928		3%	4%	3%	3%	3%	4%
rejected %	89%	87%	90%	90%	89%	54%	grade 1 events	102	97	97	112	99	259
								0%	0%	0%	0%	0%	0%
							grade 2 events	4722	5194	4749	4231	4637	20912
								2%	2%	2%	2%	2%	9%
							grade 3 events	2355	2562	2134	2141	2332	9553
								1%	1%	1%	1%	1%	4%
							grade 4 events	2159	2519	2151	2170	2290	9545
								1%	1%	1%	1%	1%	4%
							grade 5 events	7128	7959	6783	8202	8424	24103
								3%	4%	3%	4%	4%	10%
							grade 6 events	3961	4560	3788	3851	4579	53700
								2%	2%	1%	1%	2%	23%
							grade 7 events	162018	159990	181771	171178	177190	98552
								85%	83%	87%	85%	85%	43%

2.2 Compared Parameters

Parameter	Planned	Actual	Parameter	Planned	Actual
Instrument	ACIS	ACIS	Obspar format version number	7	7
Detector	ACIS-012367	ACIS-012367	Obspar file type	PREDICTED	ACTUAL
Grating	NONE	NONE	Obspar update status	NONE	UPDATED
Data mode	VFAINT	VFAINT	CCD I0 on	Y	Y
Observation mode	POINTING	POINTING	CCD I1 on	Y	Y
[deg] Pointing RA	150.093031	150.0905239771756	CCD I2 on	Y	Y
[deg] Pointing Dec	2.364053	2.391449670380557	CCD I3 on	Y	Y
[deg] Pointing Roll	64.799750	65.00855038851877	CCD S0 on	N	N
[mm] SIM focus pos	-0.782348	-0.7809083437167272	CCD S1 on	N	N
[mm] SIM defocus	0	0.001439871863259334	CCD S2 on	O1	Y
[mm] SIM translation stage pos	-233.592463	-233.5874344608287	CCD S3 on	O2	Y
[mm] SIM translation stage offset	0	-0.005018542100998502	CCD S4 on	N	N
[s] Observation start time (MET)	282892726.184000	282891528.00275	CCD S5 on	N	N
Observation start date	2006-12-19T05:17:41	2006-12-19T04:58:48	Number of optional ACIS chips dropped	0	0
[s] Observation end time (MET)	282922726.184000	282923286.09176	On-chip summing requested	N	N
Observation end date	2006-12-19T13:37:41	2006-12-19T13:48:06	Subarray requested	NONE	NONE
Read mode	TIMED	TIMED	Alternating exposures requested	N	N
			[s] Primary exposure time	0.000000	3.2

2.3 Aspect



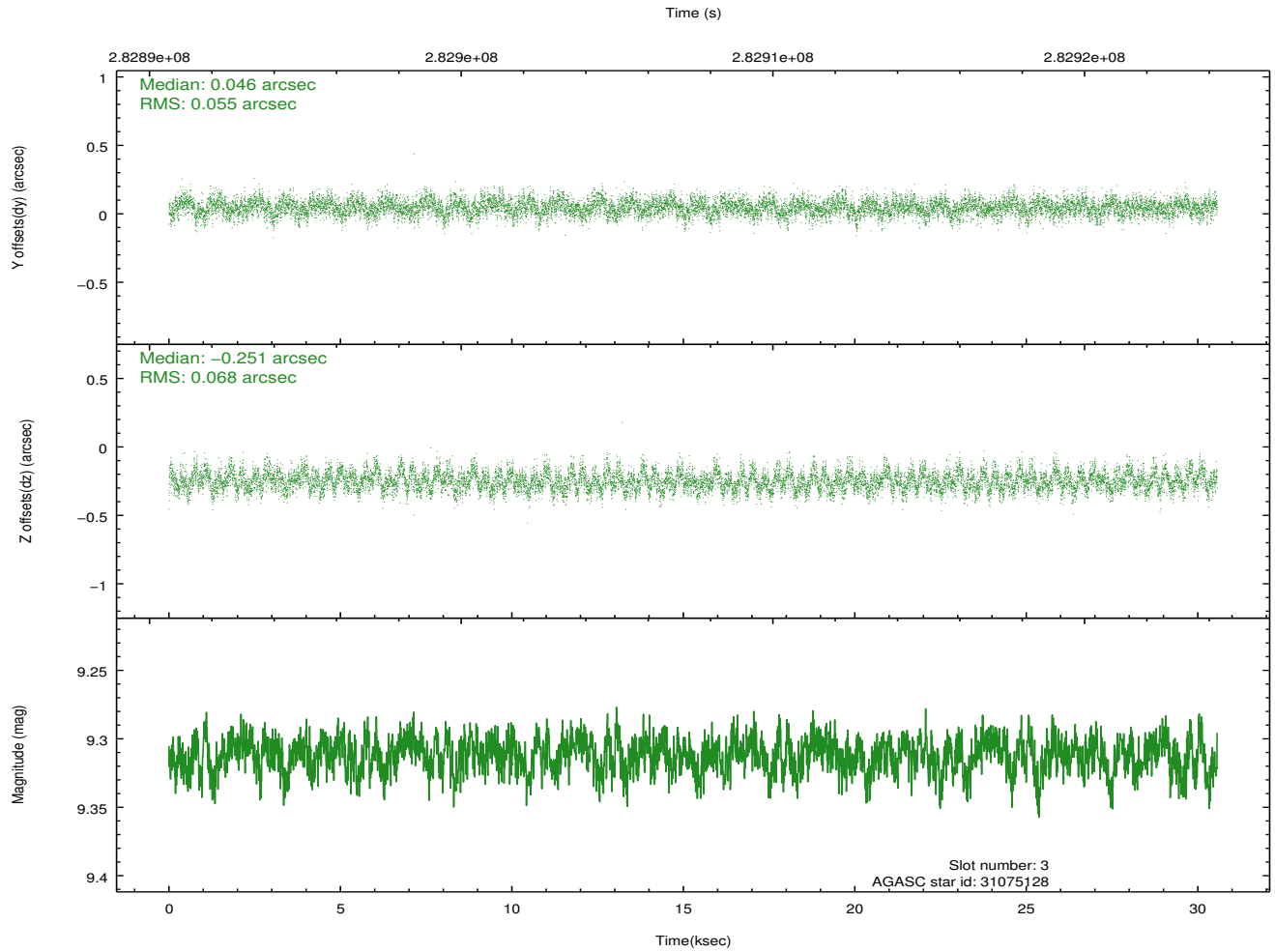
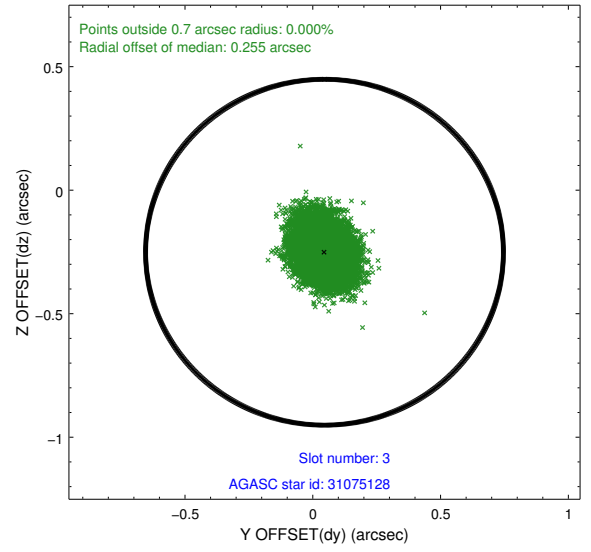
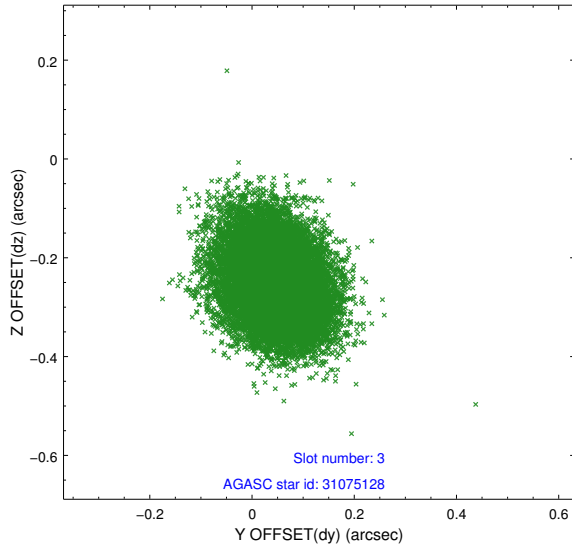


Slot Statistics

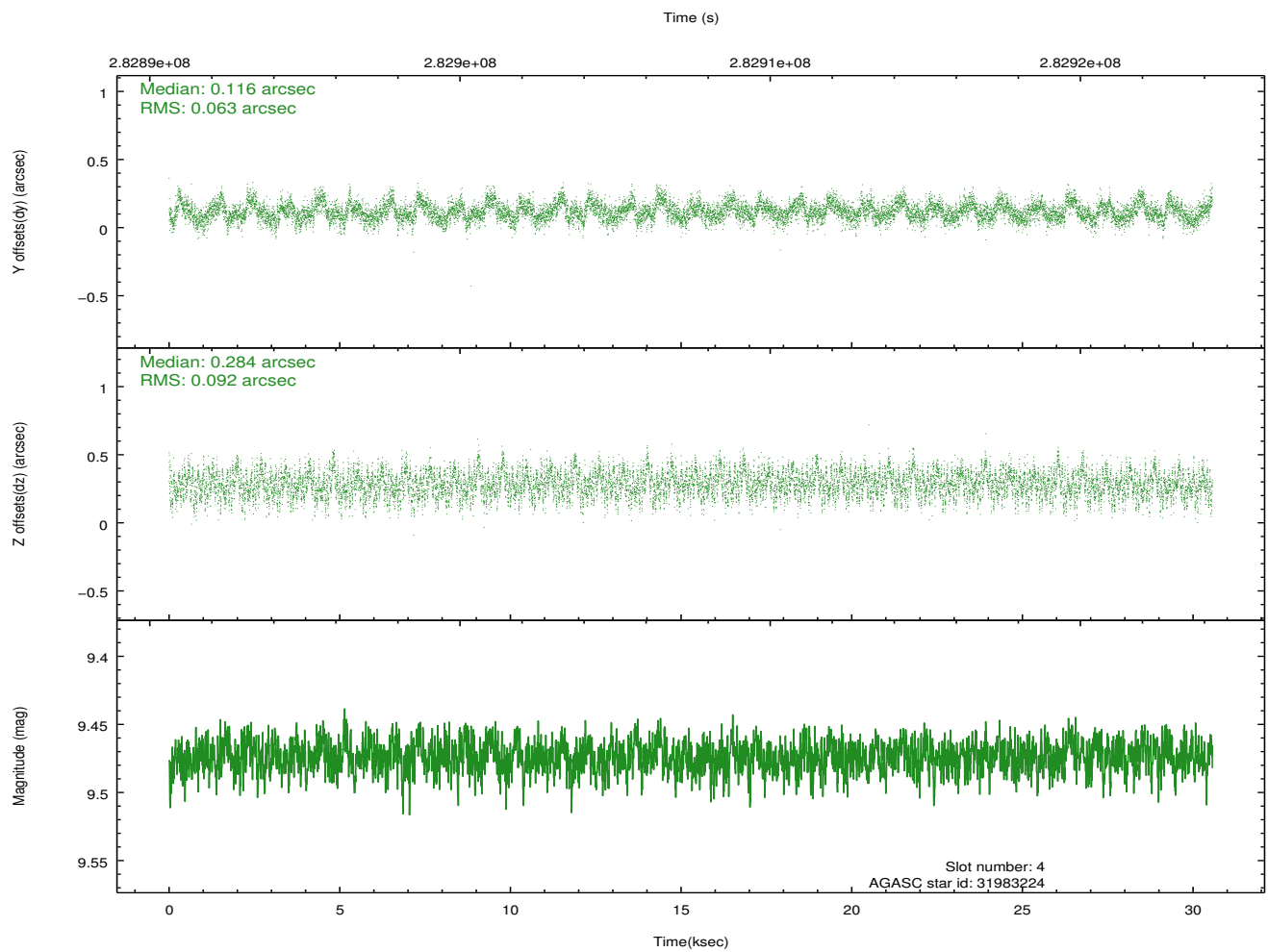
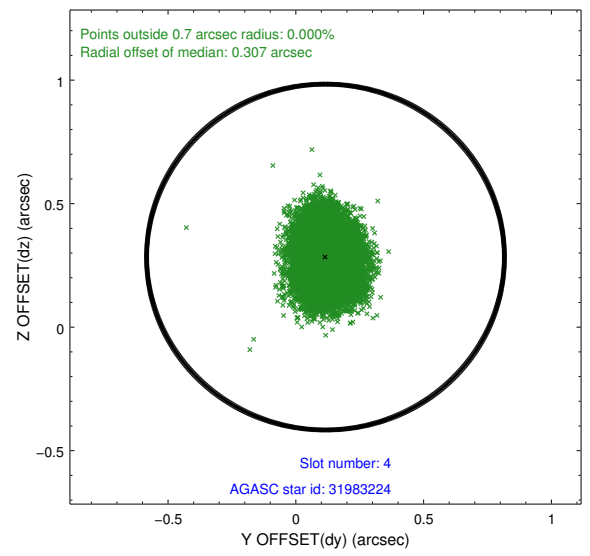
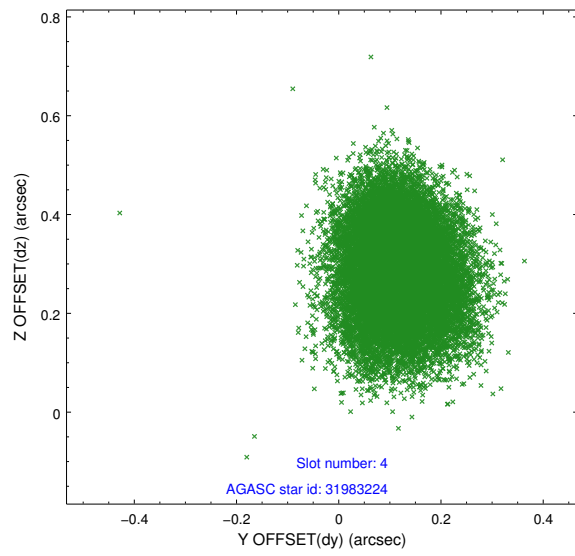
slot	status	id	mag	n_pts	med_dy	med_dz	dr1	dr2	ra	dec	mean_y	mean_z
0	FID	ACIS-I-1	7.24	7456	-0.020	-0.025	0.020	0.033	0.000000	0.000000	927.00	-836.57
1	FID	ACIS-I-4	7.18	7454	0.212	0.051	0.019	0.031	0.000000	0.000000	2147.33	1063.25
2	FID	ACIS-I-5	7.22	7455	-0.289	0.044	0.017	0.027	0.000000	0.000000	-1821.17	1061.21
3	GUIDE	31075128	9.31	14893	0.046	-0.251	0.093	0.149	149.584516	2.364347	-777.51	1655.39
4	GUIDE	31983224	9.47	14901	0.116	0.284	0.120	0.191	150.543757	1.869948	-918.07	-2224.30
5	GUIDE	31983336	8.59	14903	0.128	0.065	0.066	0.108	150.429924	2.291234	279.46	-1207.95
6	GUIDE	32374896	9.22	14897	-0.181	0.127	0.089	0.142	150.682269	2.512794	1387.55	-1689.03
7	GUIDE	31463496	9.46	14889	-0.110	-0.221	0.114	0.179	149.845020	2.964001	1574.68	1726.56

2.4 Star Slots

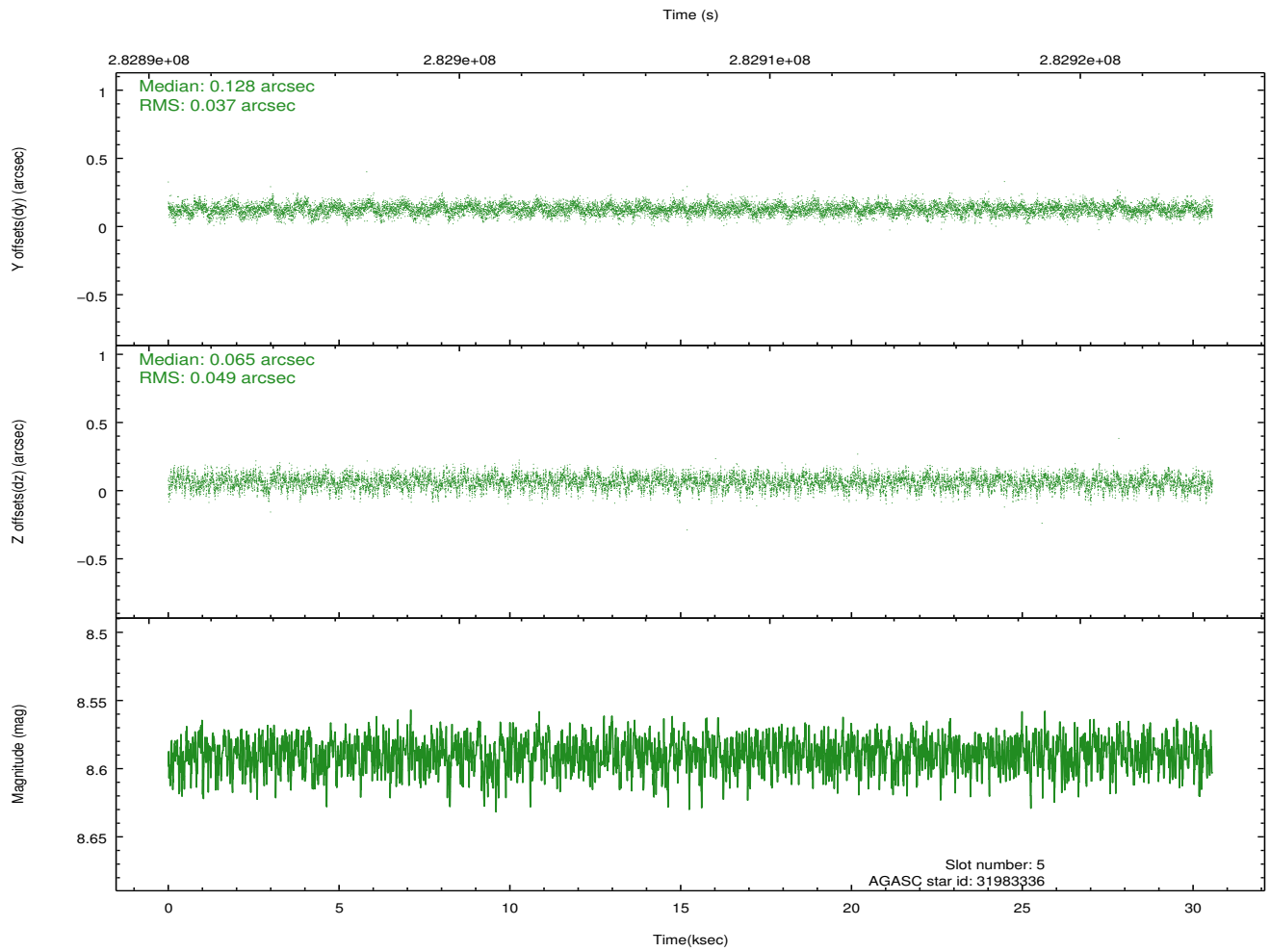
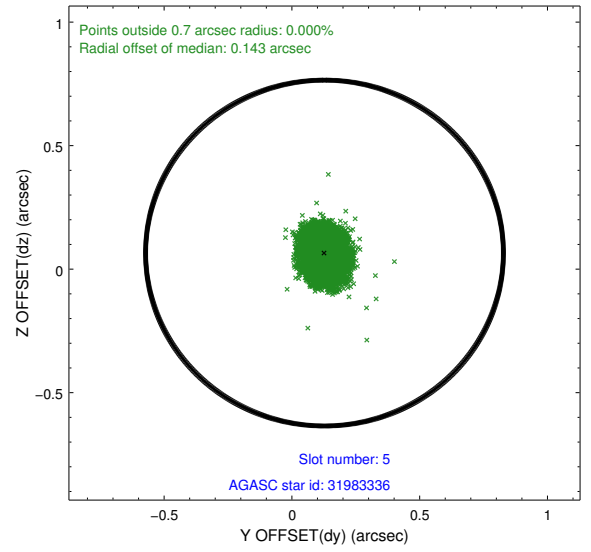
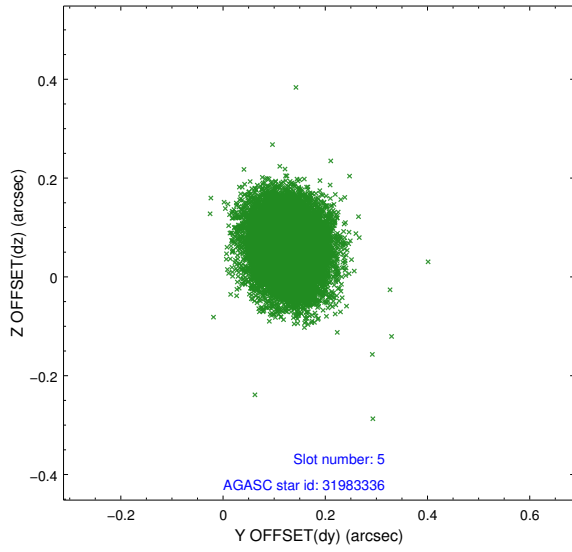
2.4.1 Slot 3



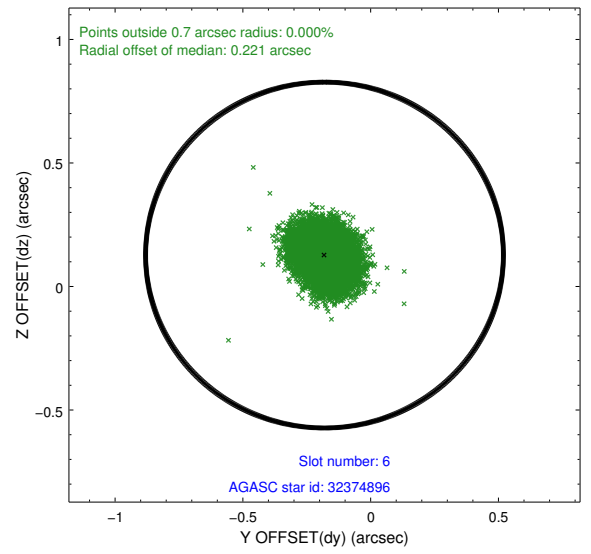
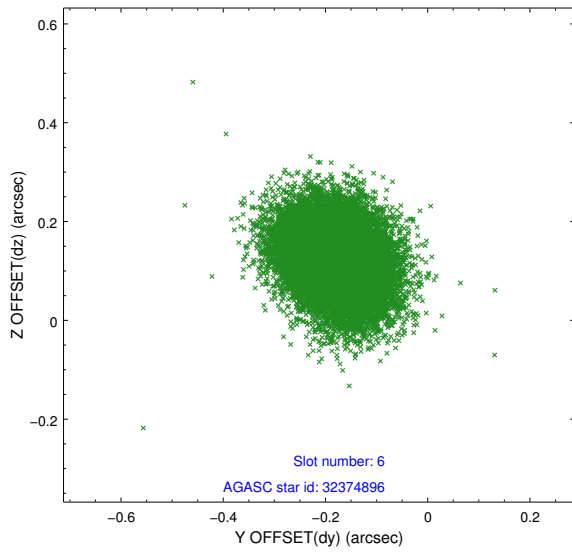
2.4.2 Slot 4



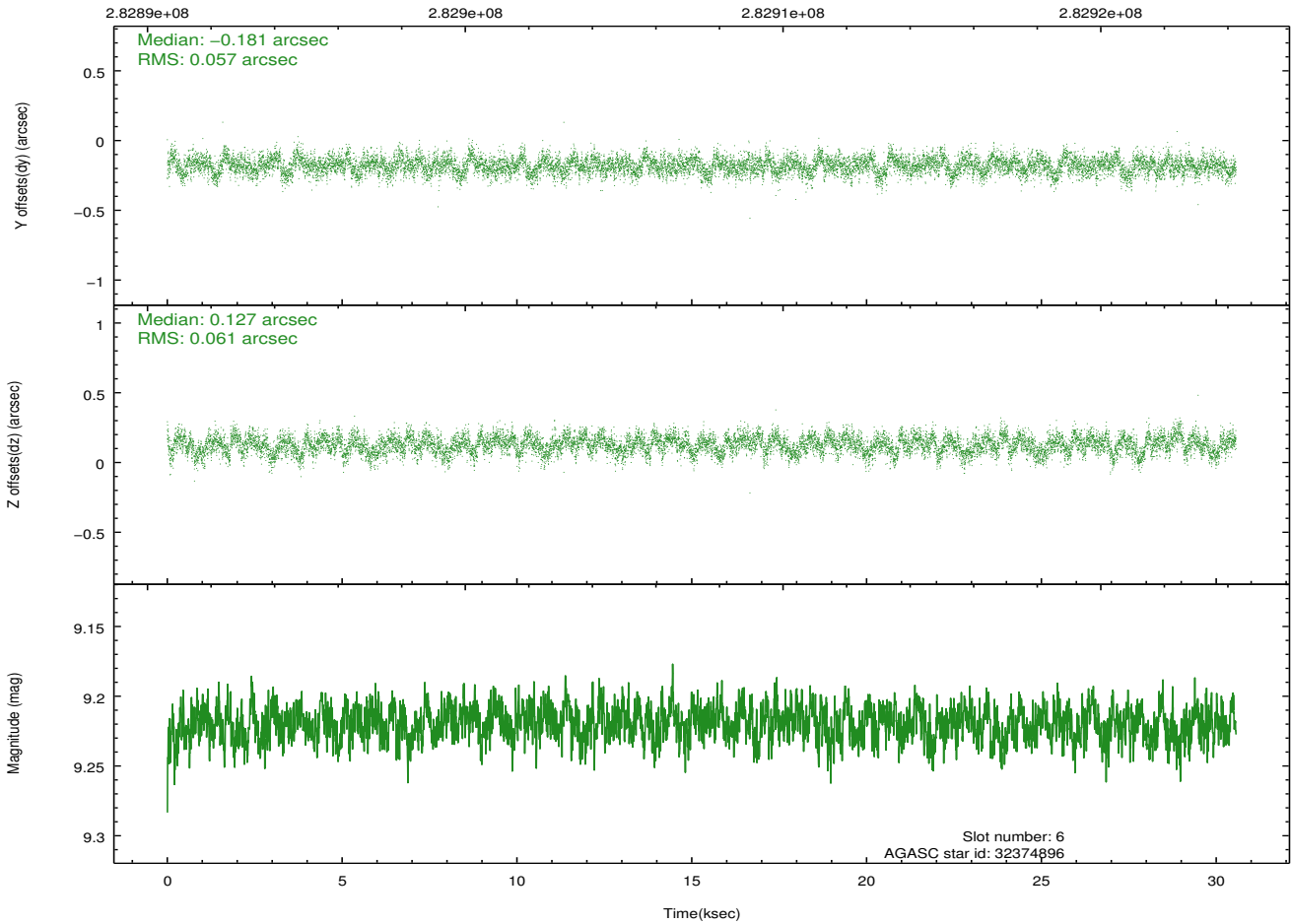
2.4.3 Slot 5



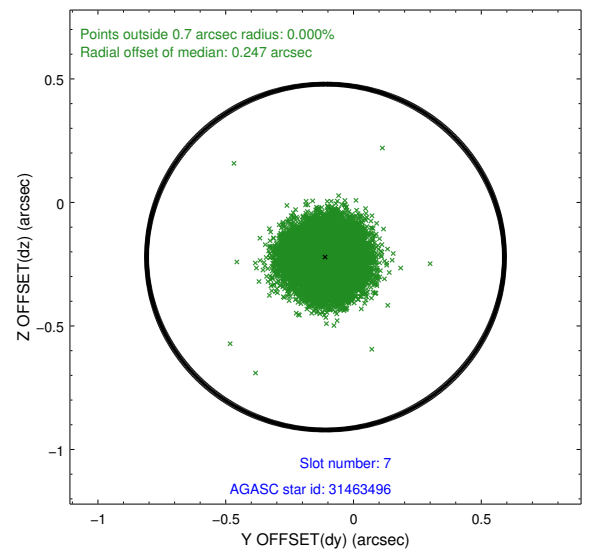
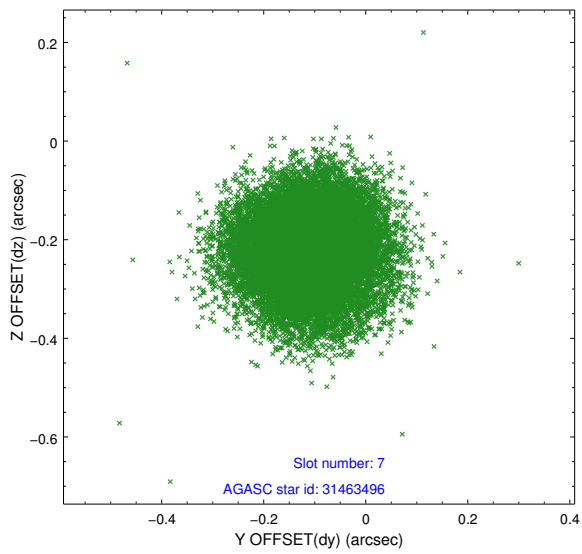
2.4.4 Slot 6



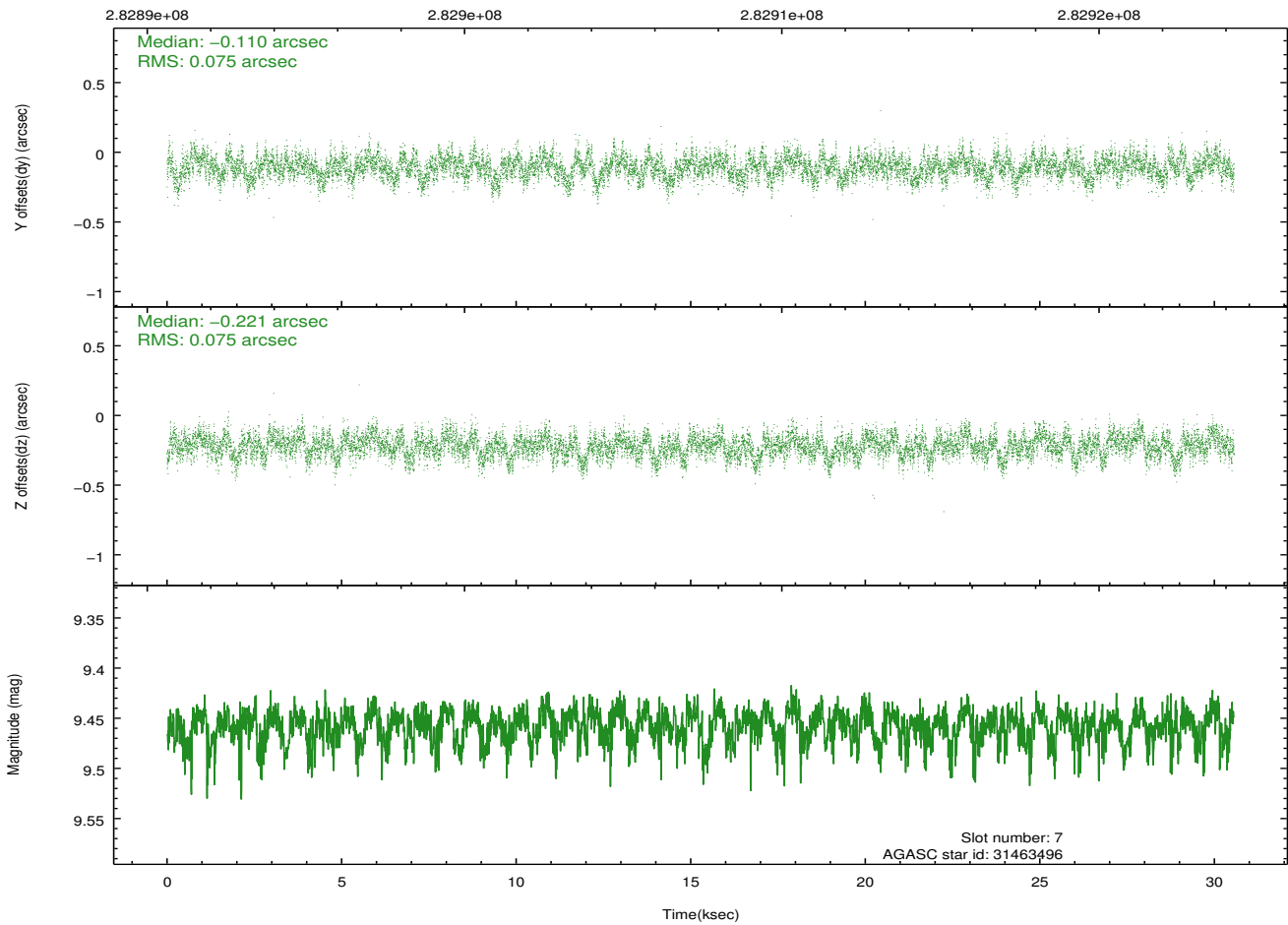
Time (s)



2.4.5 Slot 7

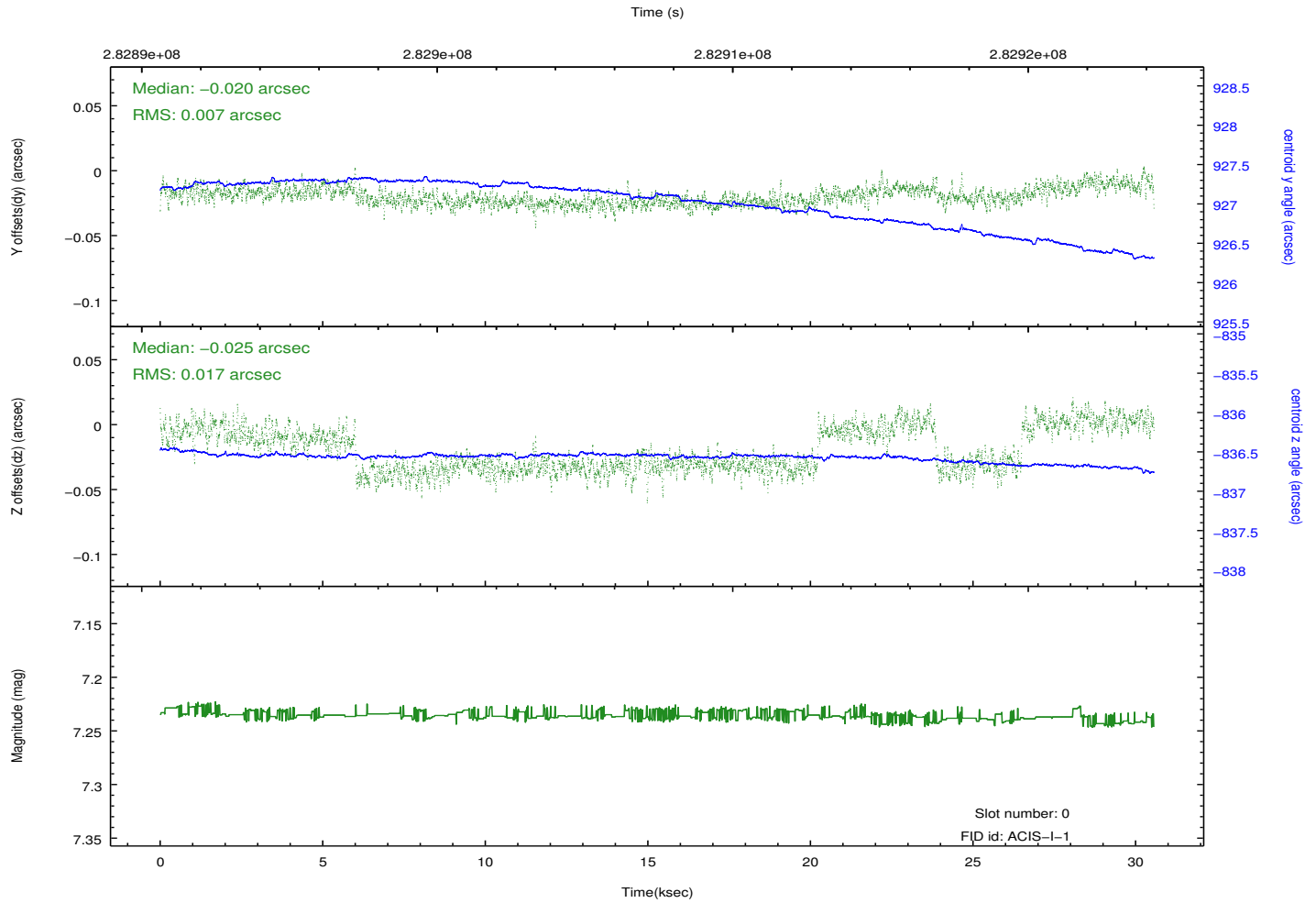
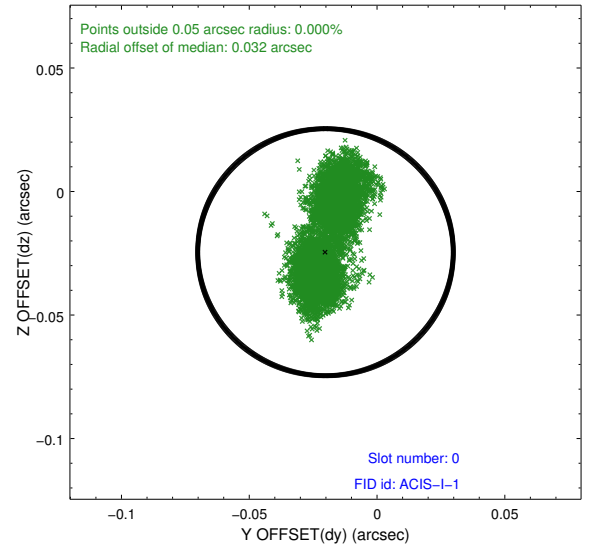
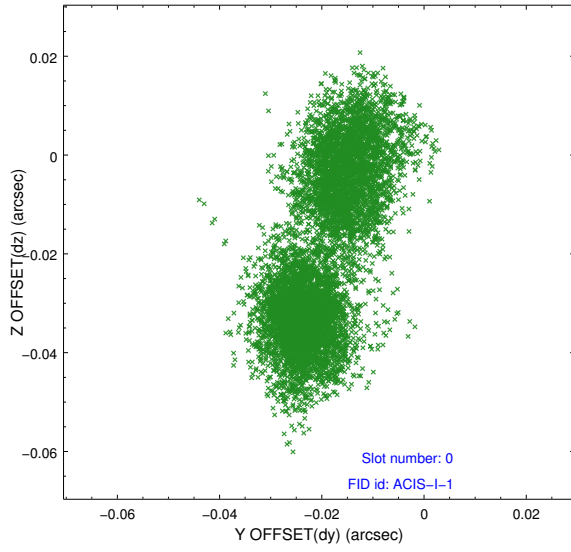


Time (s)

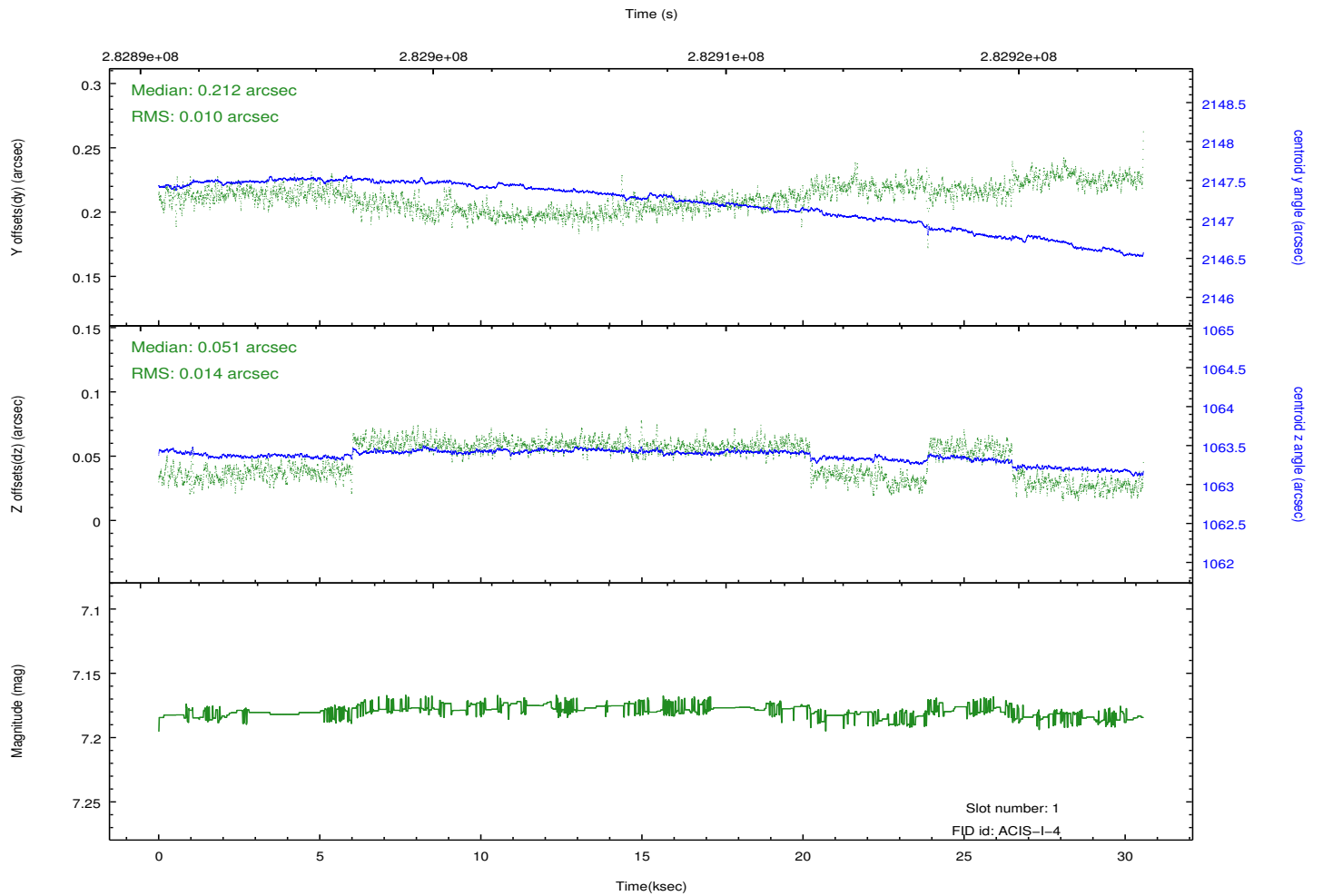
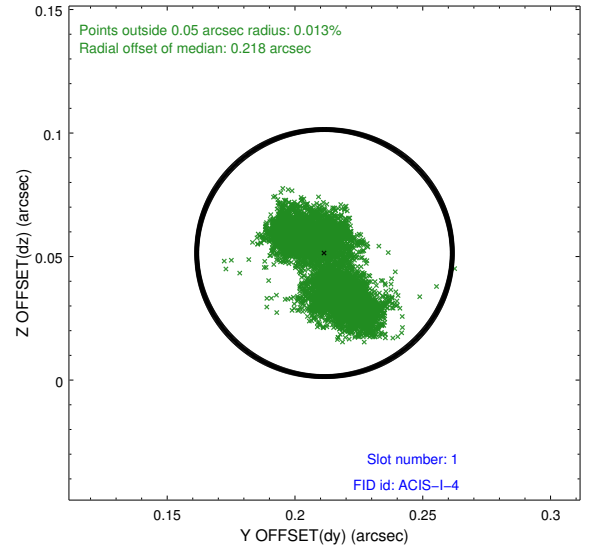
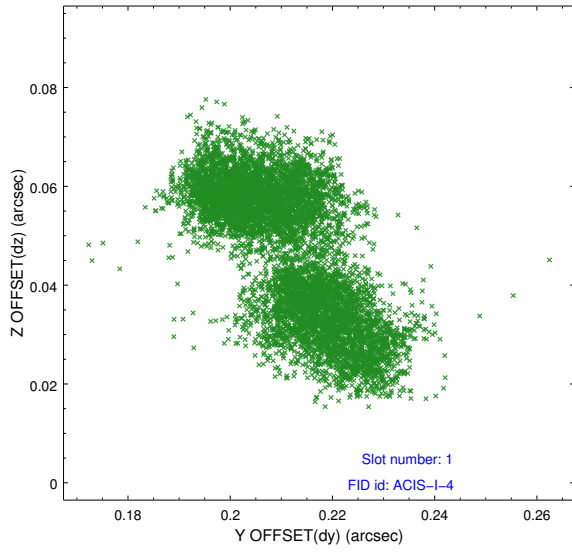


2.5 FID Slots

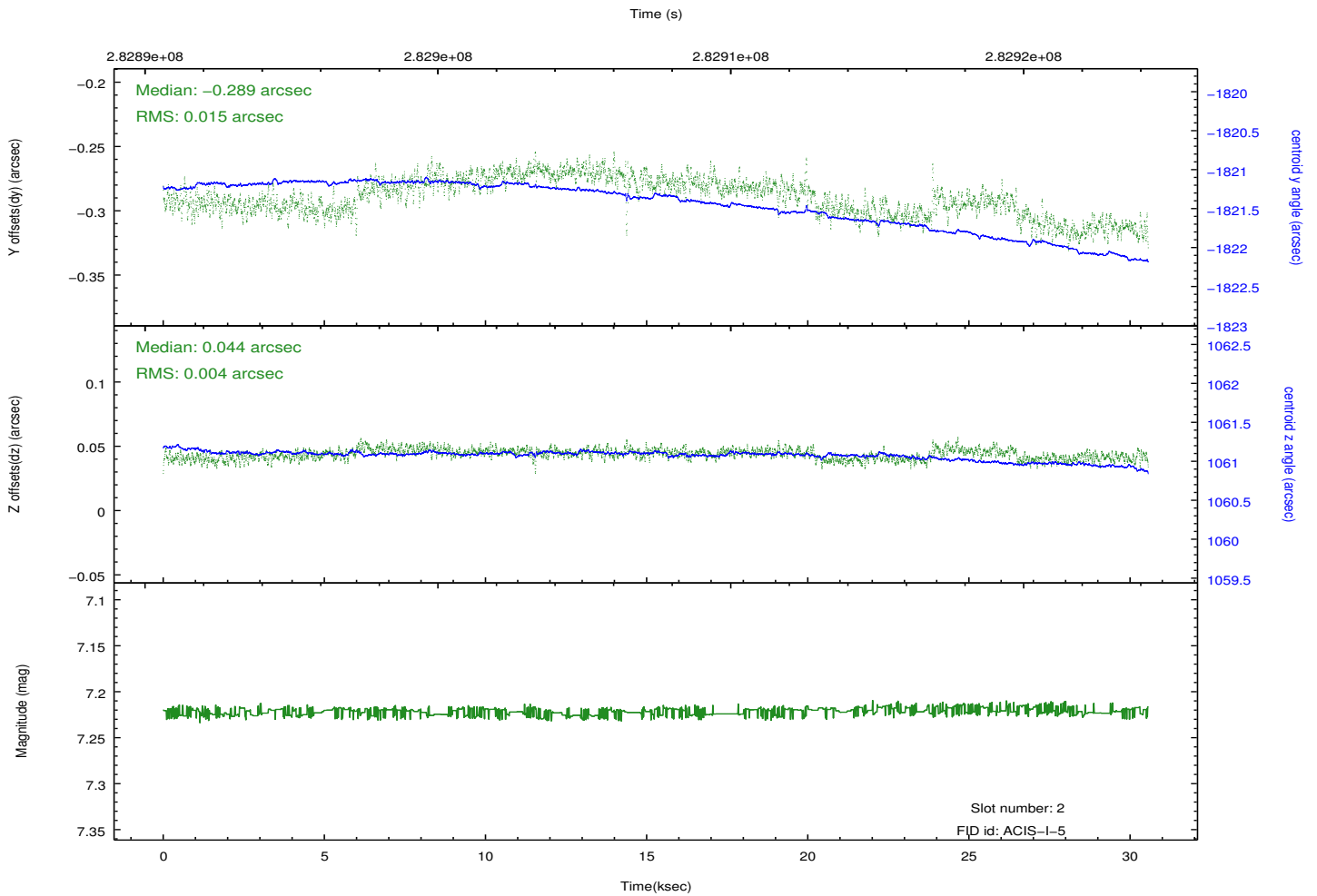
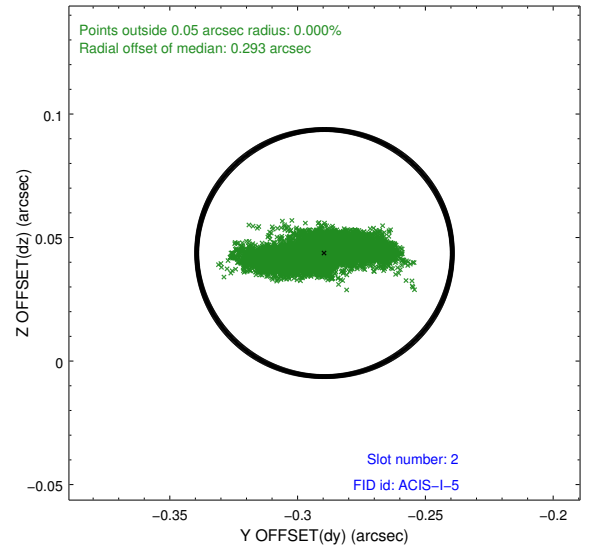
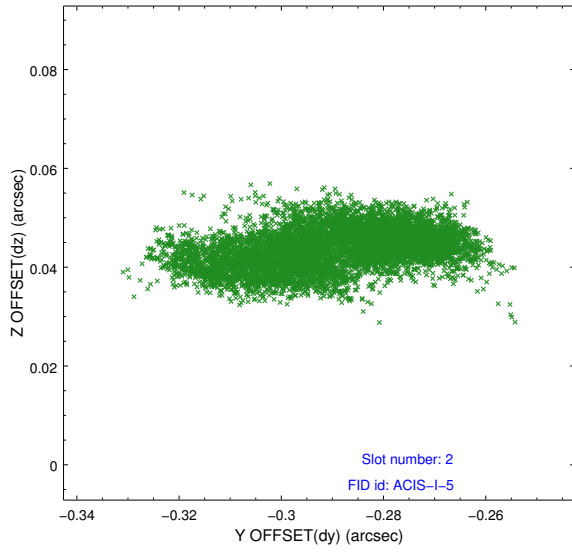
2.5.1 Slot 0



2.5.2 Slot 1



2.5.3 Slot 2



A Summary

A.1 Status

V&V Scientist	Jen Lauer
V&V Date (YYYY-MM-DD)	2012.04.18
V&V Edition	1
V&V Disposition and Status	OK
V&V Charge Time	30.025518

A.2 Comments

Roll preference met.