

V&V Reference Report

L2 ASCDS Version : 8.4.4

Observation 8942 - L2 Version 2
Chandra X-Ray Center

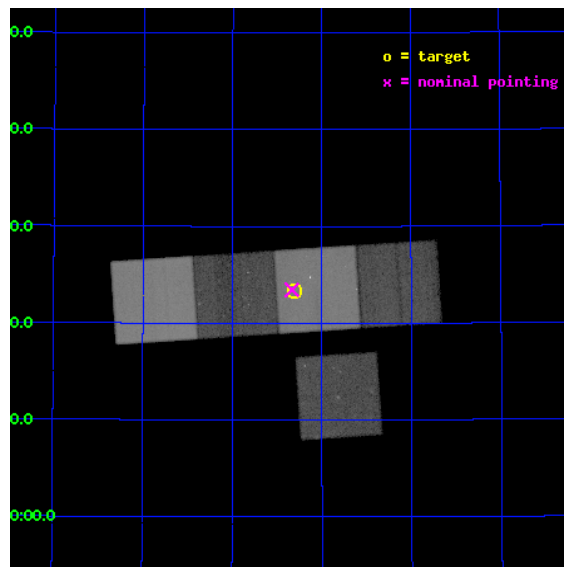
L2 Processing Date : May 11 2012

Contents

1	Front	2
2	OBI	3
2.1	OBI	3
2.1.1	Images	3
2.1.2	Bias	3
2.1.3	Parameters	4
2.1.4	Events	4
2.2	Compared Parameters	5
2.3	Aspect	6
2.4	Star Slots	9
2.4.1	Slot 3	9
2.4.2	Slot 4	10
2.4.3	Slot 5	11
2.4.4	Slot 6	12
2.4.5	Slot 7	13
2.5	FID Slots	14
2.5.1	Slot 0	14
2.5.2	Slot 1	15
2.5.3	Slot 2	16
A	Summary	17
A.1	Status	17
A.2	Comments	17

1 Front

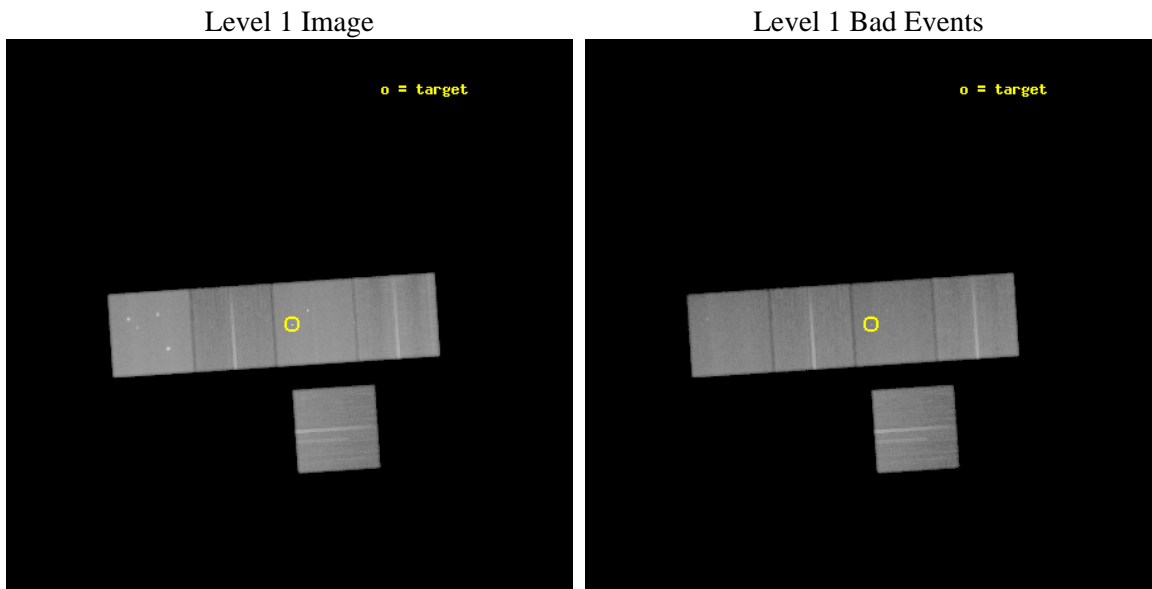
seq_num	200523	Sequence number
obs_id	8942	Observation id
title	X-ray Emission from the Hot White Dwarf KPD 0005+5106: Corona or Accretion?	Proposal title
observer	Prof. You-Hua Chu	Principal investigator
object	KPD 0005+5106	Source name
dtcycle	0	
cycle	P	events from which exps? Prim/Second/Both
ra_targ	2.076667	Observer's specified target RA [deg]
dec_targ	51.388611	Observer's specified target Dec [deg]
ra_nom	2.0835414904672	Nominal RA [deg]
dec_nom	51.390878883645	Nominal Dec [deg]
roll_nom	356.21838795379	Nominal Roll [deg]
revision	2	Processing version of data
ontime	48036.867505372	Sum of GTIs [s]
livetime	47409.230467187	Livetime [s]
ontime3	48033.603395104	Sum of GTIs [s]
ontime5	48036.826465368	Sum of GTIs [s]
ontime6	48036.785425365	Sum of GTIs [s]
ontime7	48036.867505372	Sum of GTIs [s]
ontime8	48036.703345358	Sum of GTIs [s]
l2events	736531	Number of level 2 events



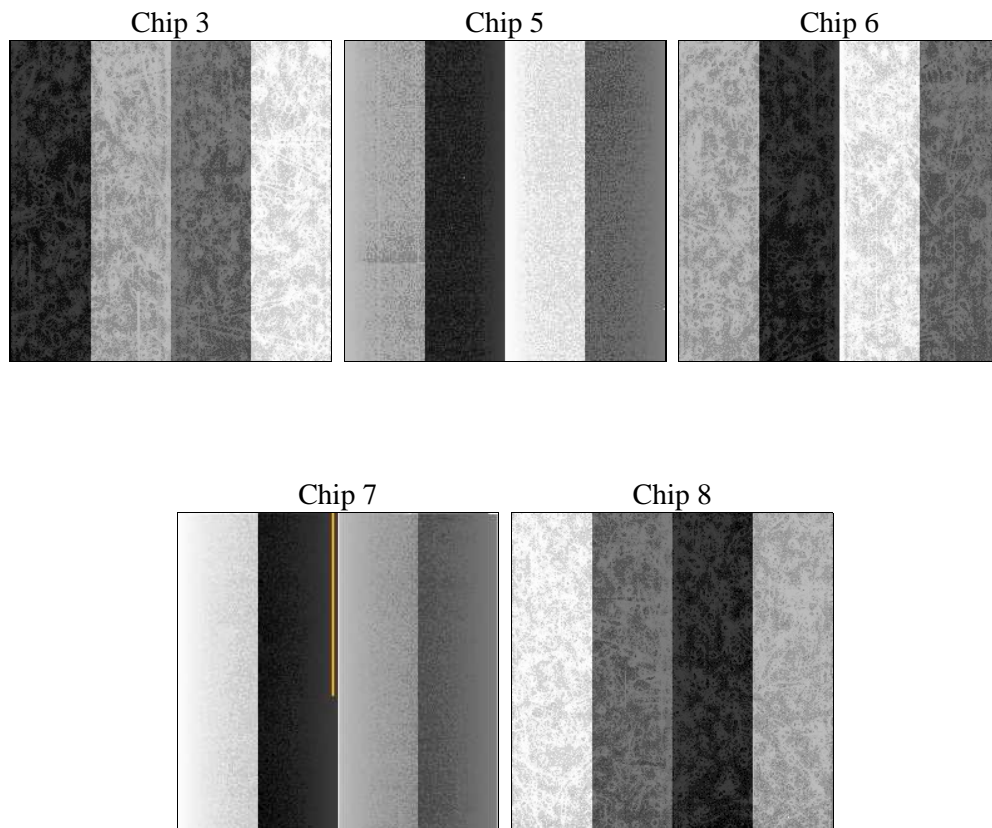
2 OBI

2.1 OBI

2.1.1 Images



2.1.2 Bias



2.1.3 Parameters

obi_num	0	Obi number	sched_exp_time	48000.000000	[s] Scheduled observation exposure time
ascdsver	8.4.4	Processing system revision	ontime	48036.867505372	Sum of GTIs [s]
caldbver	4.4.9	 	ontime3	48033.603395104	Sum of GTIs [s]
date	2012-05-11T14:54:28	Date and time of file creation	ontime5	48036.826465368	Sum of GTIs [s]
revision	2	Processing version of data	ontime6	48036.785425365	Sum of GTIs [s]
			ontime7	48036.867505372	Sum of GTIs [s]
			ontime8	48036.703345358	Sum of GTIs [s]
			l1events	2878454	Number of level 1 events

2.1.4 Events

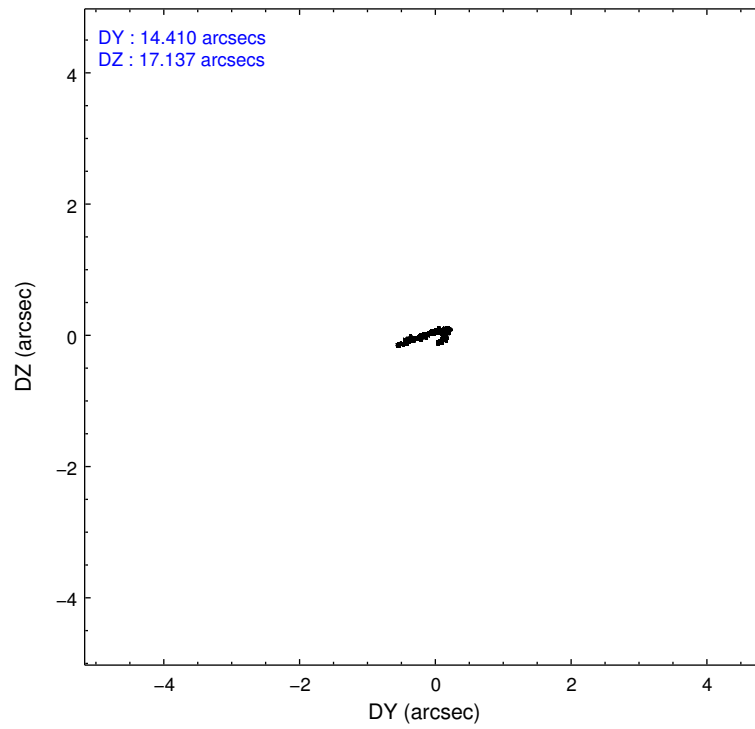
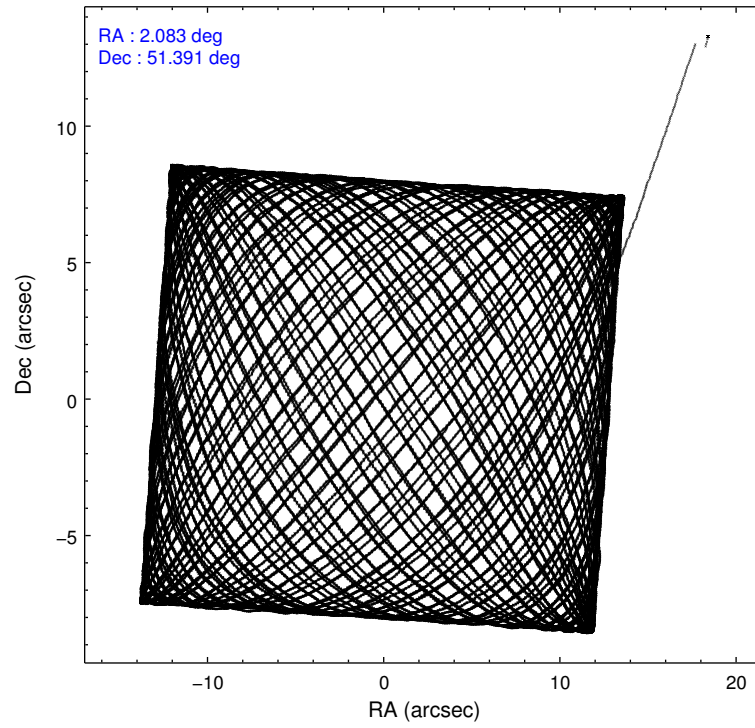
	ccd 3	ccd 5	ccd 6	ccd 7	ccd 8
level 1 events	449994	717108	466371	656037	588944
rejected events	394214	387195	410222	376381	456135
rejected %	87%	53%	87%	57%	77%

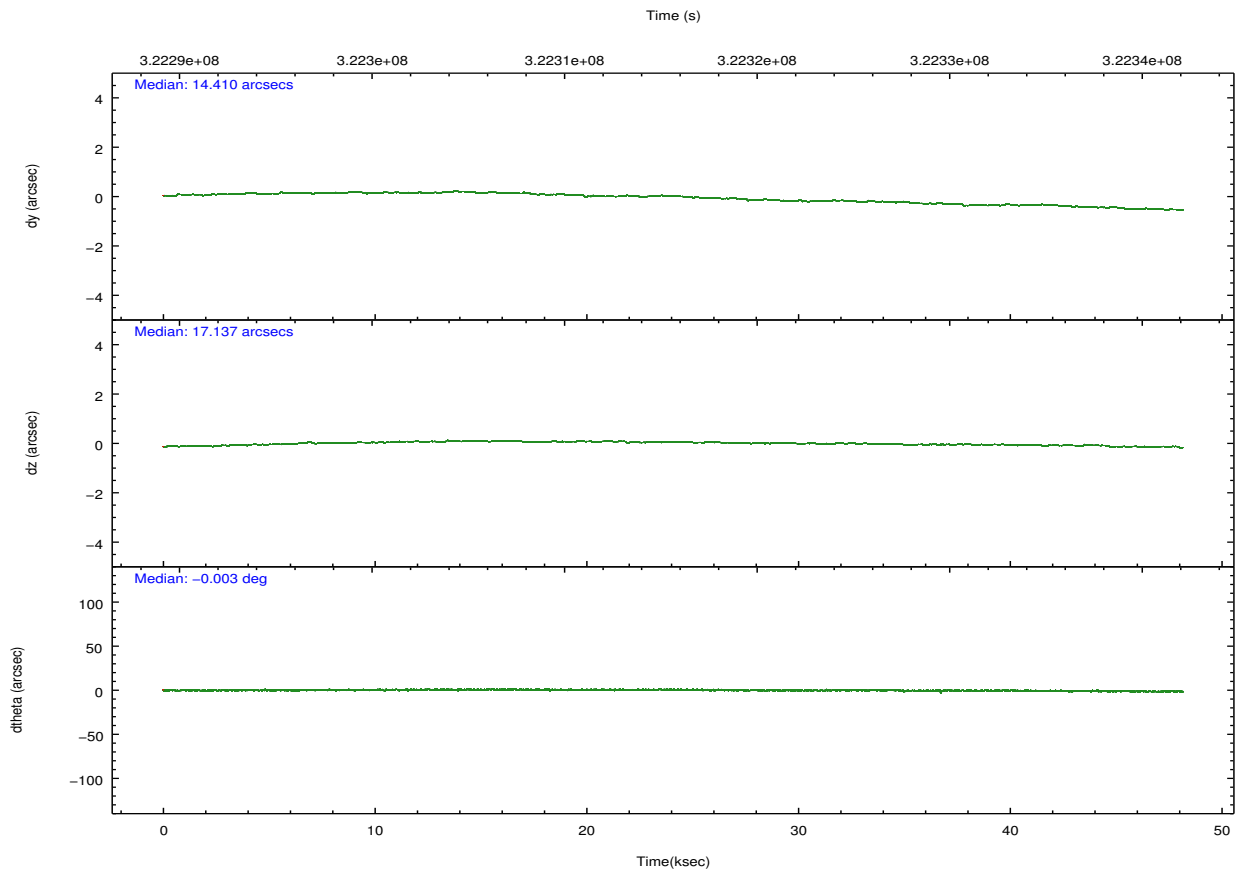
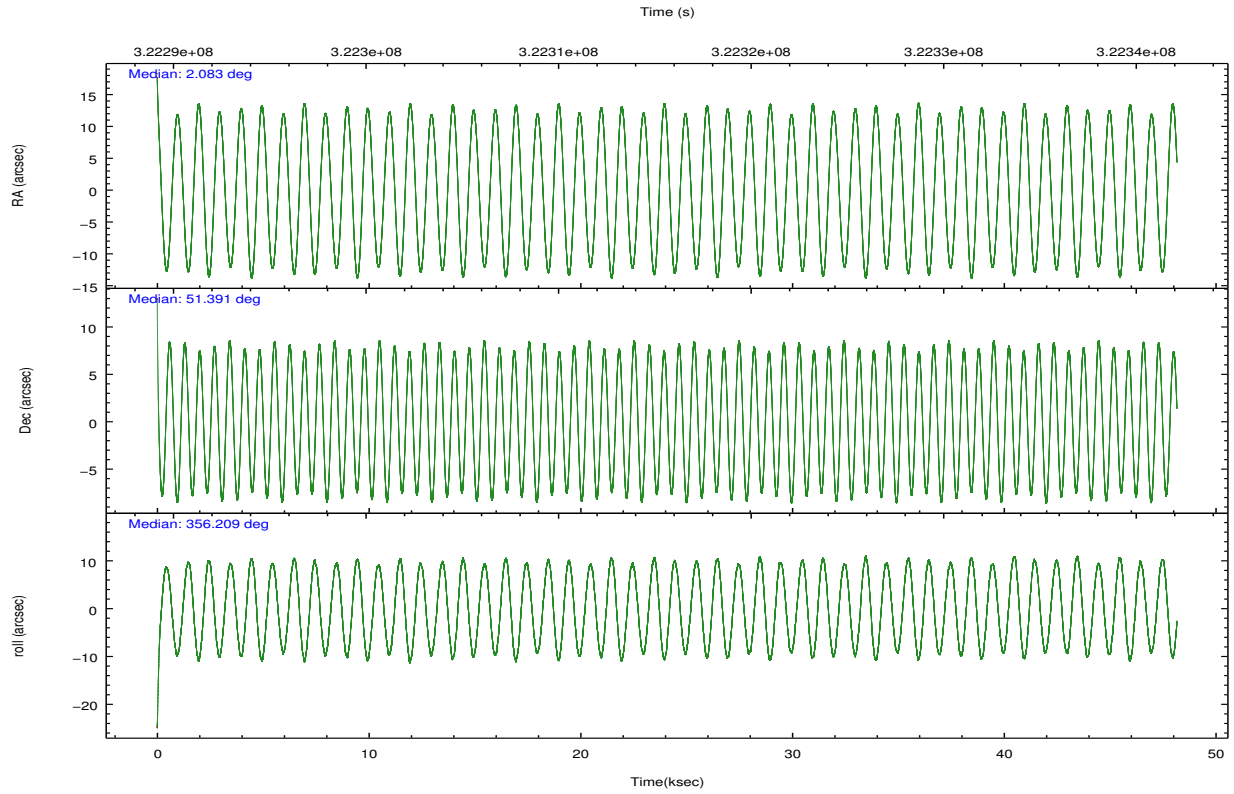
	ccd 3	ccd 5	ccd 6	ccd 7	ccd 8
grade 0 events	24648	31867	21706	29752	41546
	5%	4%	4%	4%	7%
grade 1 events	295	1347	258	1047	455
	0%	0%	0%	0%	0%
grade 2 events	10890	99854	12533	56948	30126
	2%	13%	2%	8%	5%
grade 3 events	5214	11605	5143	23566	13719
	1%	1%	1%	3%	2%
grade 4 events	5300	11213	5145	23631	12903
	1%	1%	1%	3%	2%
grade 5 events	21453	50546	22189	60875	29491
	4%	7%	4%	9%	5%
grade 6 events	9738	175407	11635	145799	34519
	2%	24%	2%	22%	5%
grade 7 events	372456	335269	387762	314419	426185
	82%	46%	83%	47%	72%

2.2 Compared Parameters

Parameter	Planned	Actual	Parameter	Planned	Actual
Instrument	ACIS	ACIS	Obspar format version number	7	7
Detector	ACIS-35678	ACIS-35678	Obspar file type	PREDICTED	ACTUAL
Grating	NONE	NONE	Obspar update status	NONE	UPDATED
Data mode	FAINT	FAINT	CCD I0 on	N	N
Observation mode	POINTING	POINTING	CCD I1 on	N	N
[deg] Pointing RA	2.044512	2.08354149046724	CCD I2 on	O1	N
[deg] Pointing Dec	51.378463	51.39087888364512	CCD I3 on	O2	Y
[deg] Pointing Roll	356.092257	356.2183879537887	CCD S0 on	N	N
[mm] SIM focus pos	-0.684267	-0.6828225247311905	CCD S1 on	O3	Y
[mm] SIM defocus	0	0.001444936568705701	CCD S2 on	Y	Y
[mm] SIM translation stage pos	-190.132523	-190.145094680475	CCD S3 on	Y	Y
[mm] SIM translation stage offset	0	0.01257209746719923	CCD S4 on	Y	Y
[s] Observation start time (MET)	322291703.184000	322290772.01831	CCD S5 on	N	N
Observation start date	2008-03-19T05:27:18	2008-03-19T05:12:52	Number of optional ACIS chips dropped	1	1
[s] Observation end time (MET)	322339703.184000	322340810.98324	On-chip summing requested	N	N
Observation end date	2008-03-19T18:47:18	2008-03-19T19:06:50	Subarray requested	NONE	NONE
Read mode	TIMED	TIMED	Alternating exposures requested	N	N
			[s] Primary exposure time	0.000000	3.1

2.3 Aspect



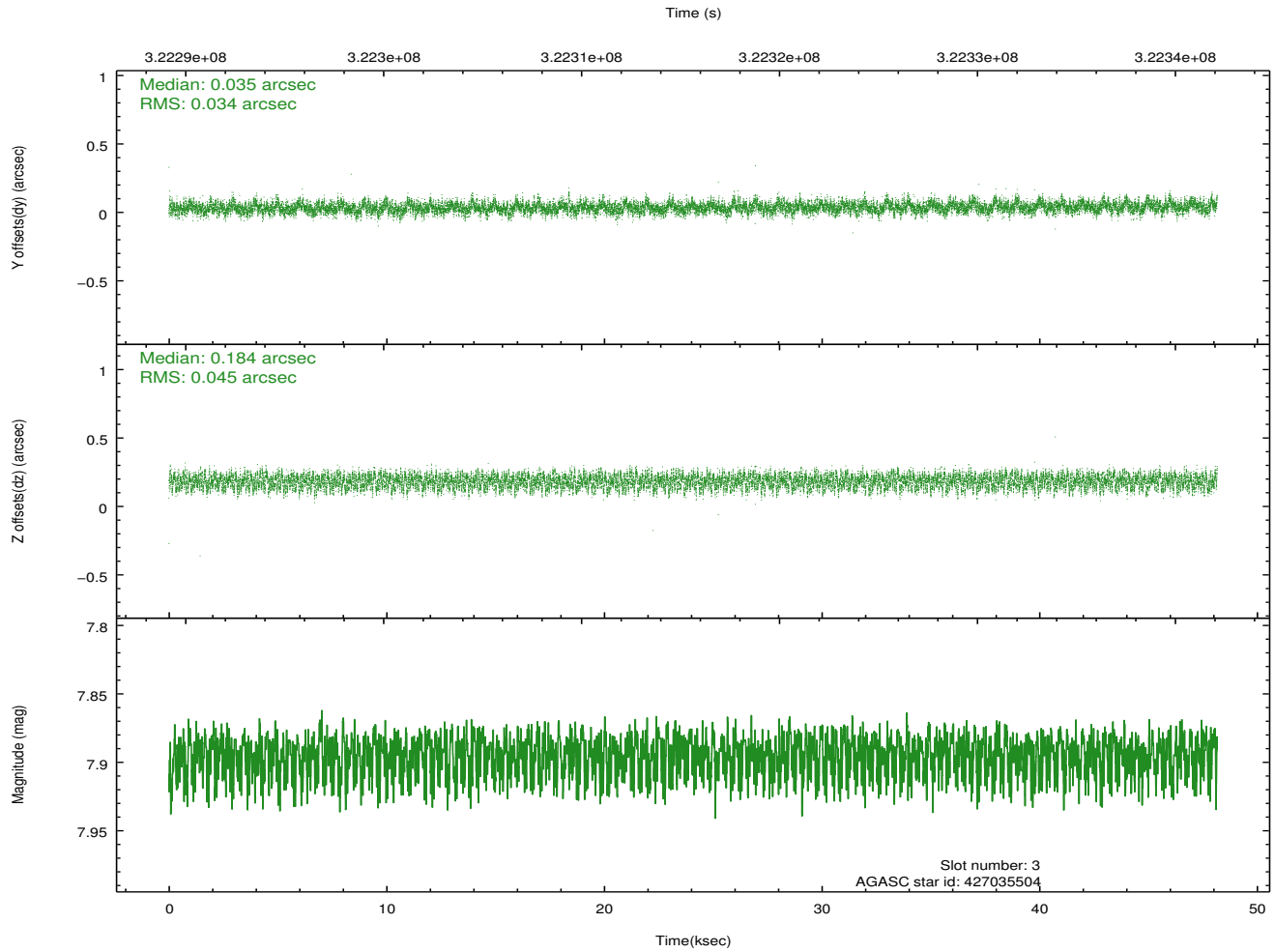
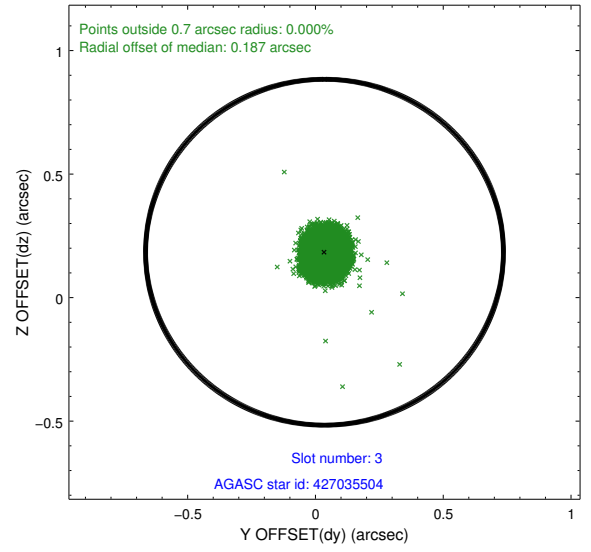
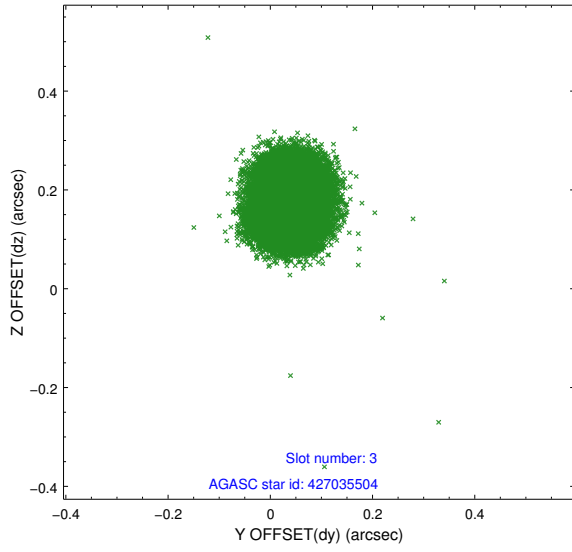


Slot Statistics

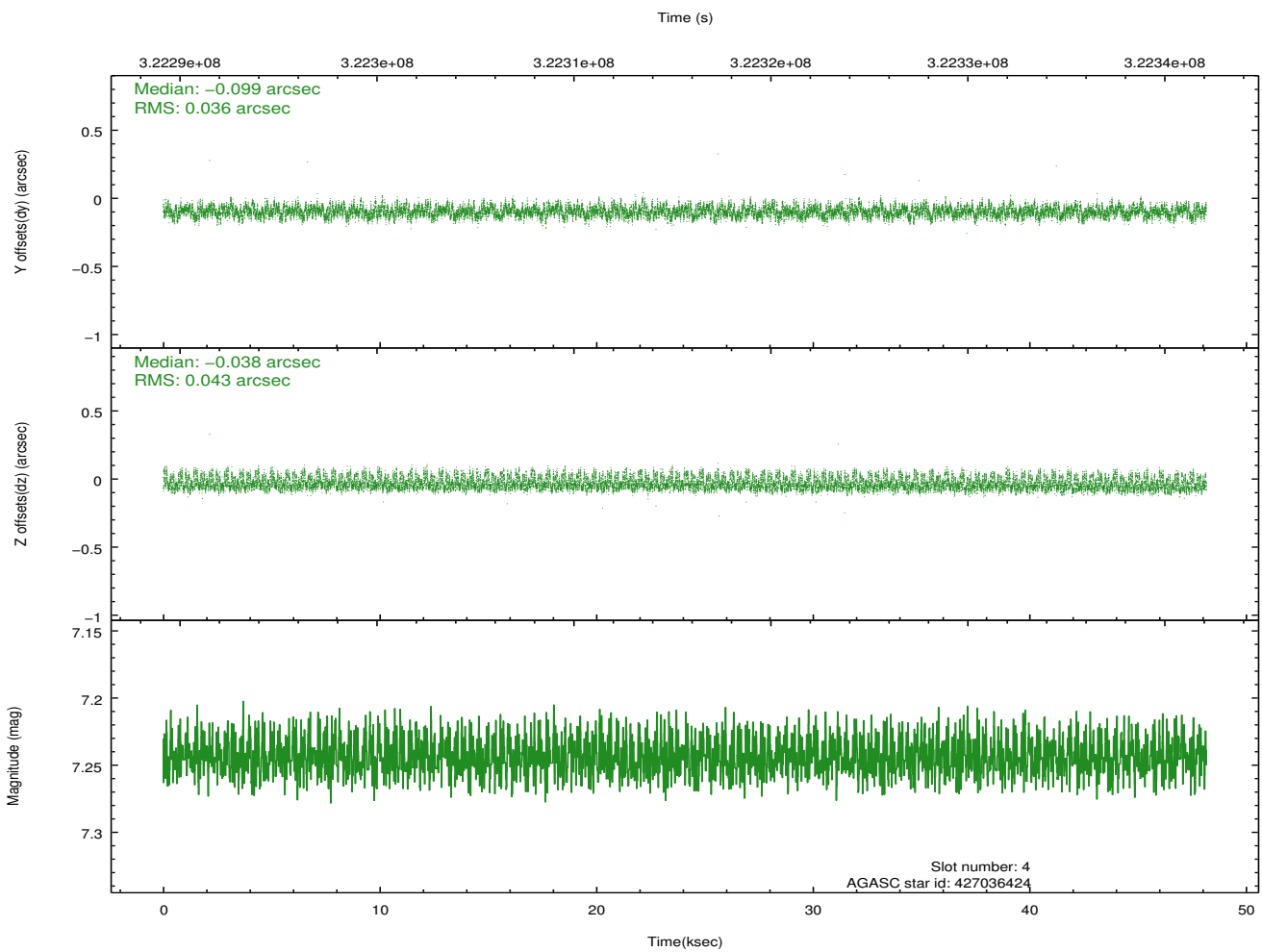
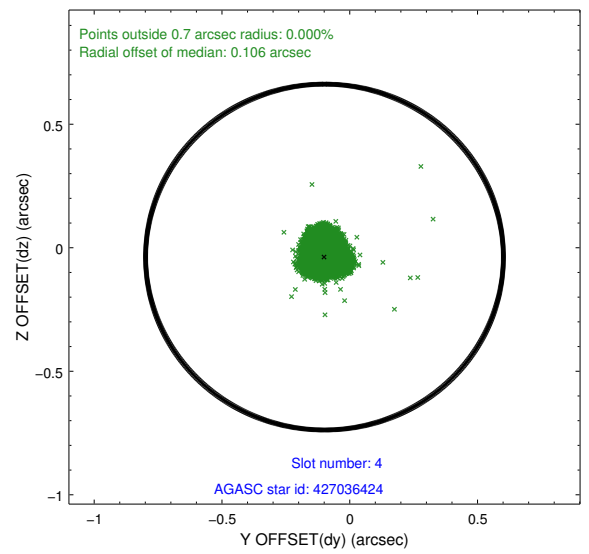
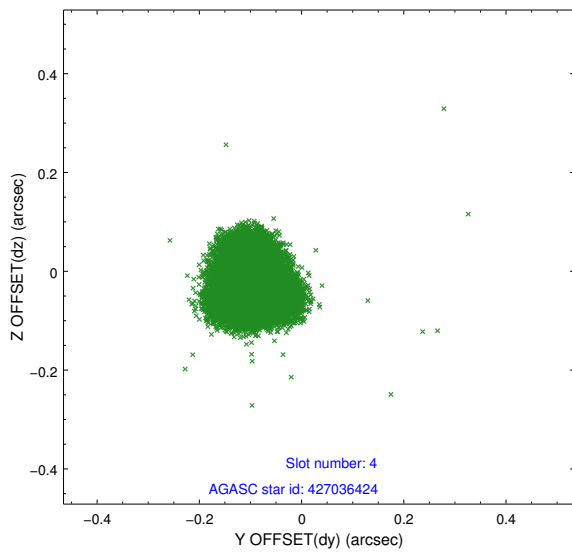
slot	status	id	mag	n_pts	med_dy	med_dz	dr1	dr2	ra	dec	mean_y	mean_z
0	FID	ACIS-S-2	7.09	11747	-0.053	-0.049	0.012	0.021	0.000000	0.000000	-767.37	-1738.49
1	FID	ACIS-S-4	7.18	11745	0.176	0.039	0.010	0.020	0.000000	0.000000	2146.18	170.03
2	FID	ACIS-S-5	7.22	11747	-0.154	0.018	0.007	0.012	0.000000	0.000000	-1820.29	163.74
3	GUIDE	427035504	7.89	23489	0.035	0.184	0.061	0.095	1.239507	51.180637	-1764.20	-824.48
4	GUIDE	427036424	7.24	23493	-0.099	-0.038	0.060	0.094	2.620815	51.912344	1145.21	2009.76
5	GUIDE	427040480	8.08	23486	-0.099	0.078	0.052	0.086	2.297284	50.829100	708.64	-1932.66
6	GUIDE	427168664	8.27	23453	0.182	-0.001	0.093	0.147	2.975333	50.752354	2268.63	-2090.66
7	GUIDE	427047824	7.22	23487	-0.021	-0.230	0.069	0.101	2.434338	52.028309	701.98	2394.91

2.4 Star Slots

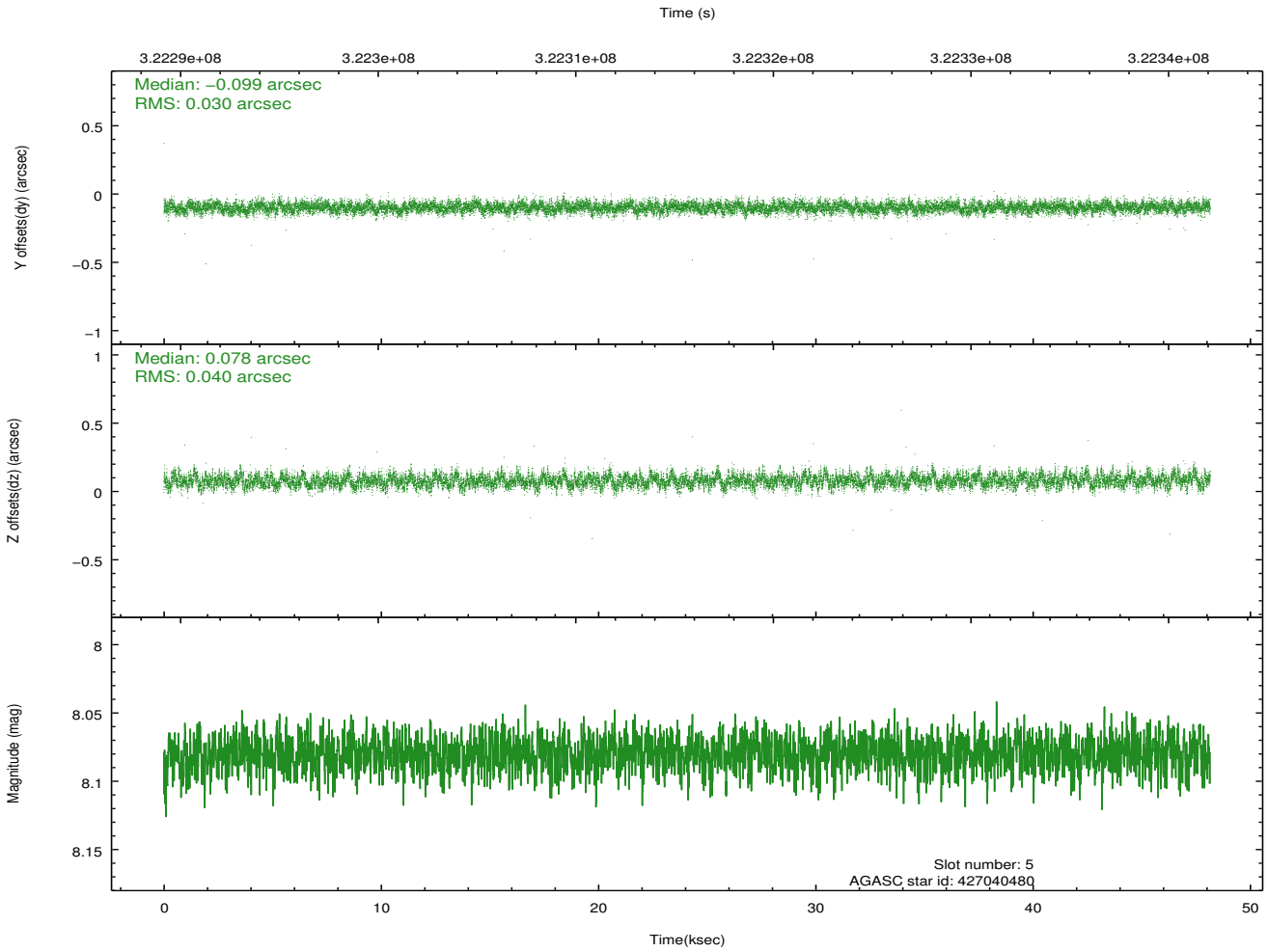
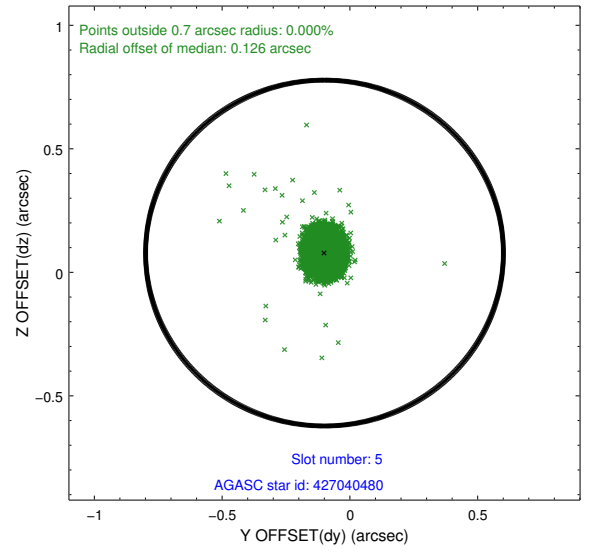
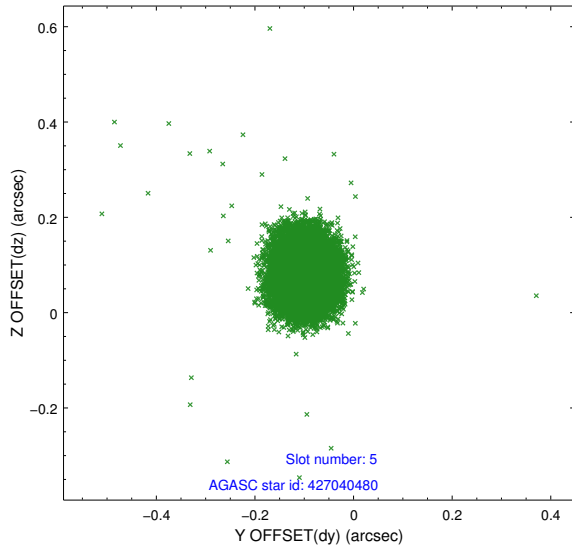
2.4.1 Slot 3



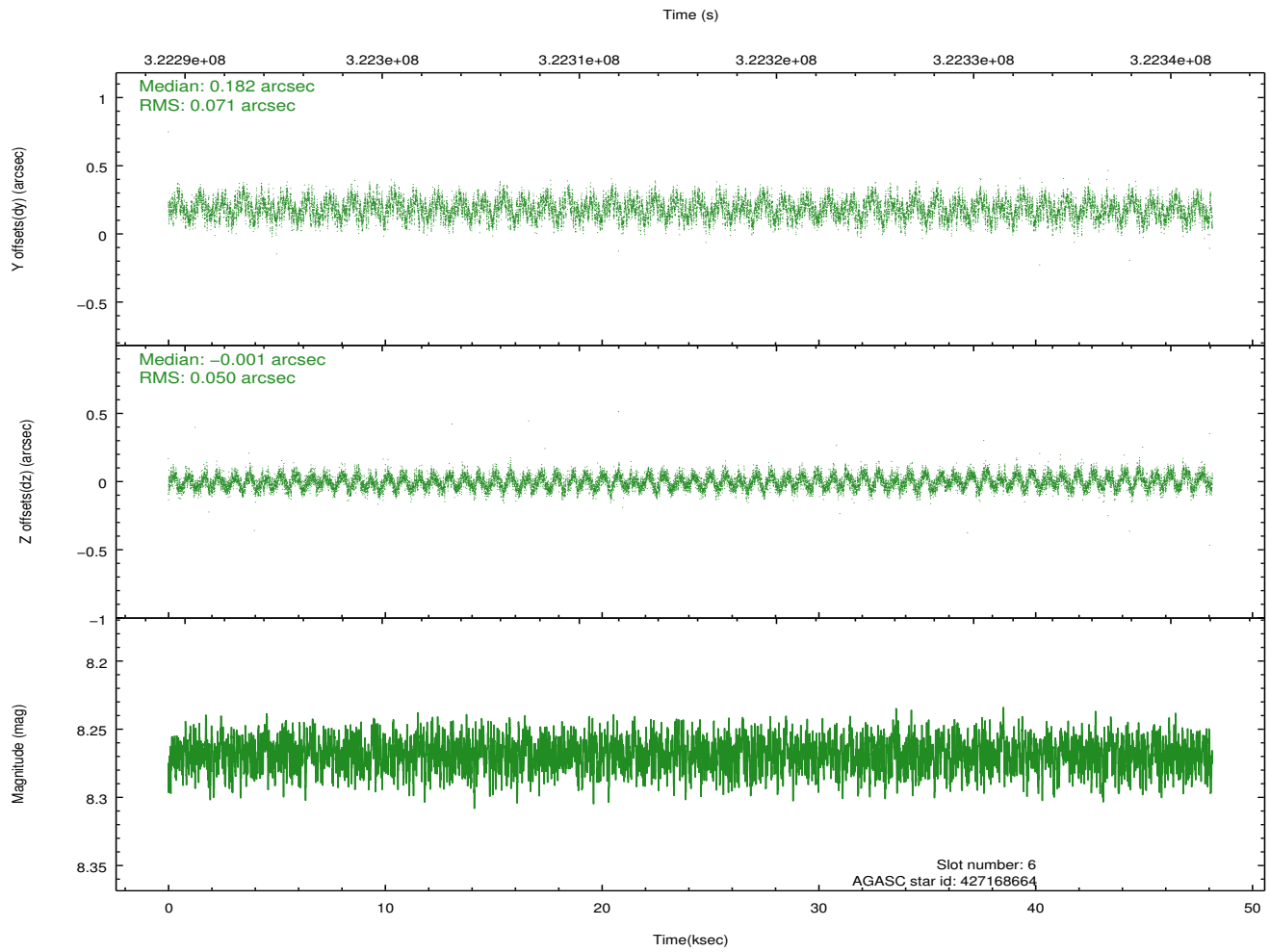
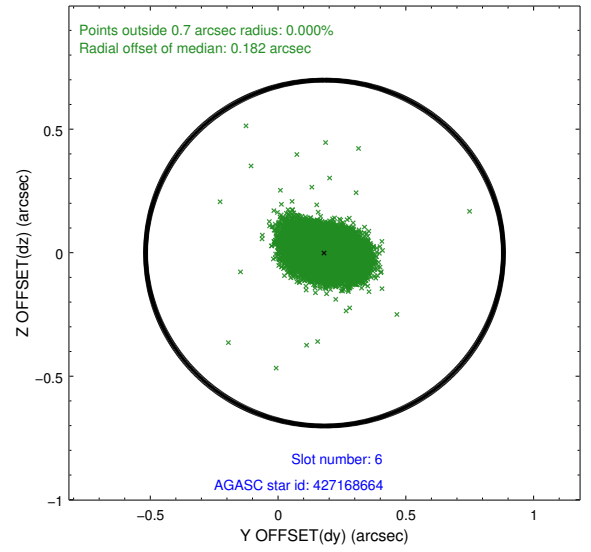
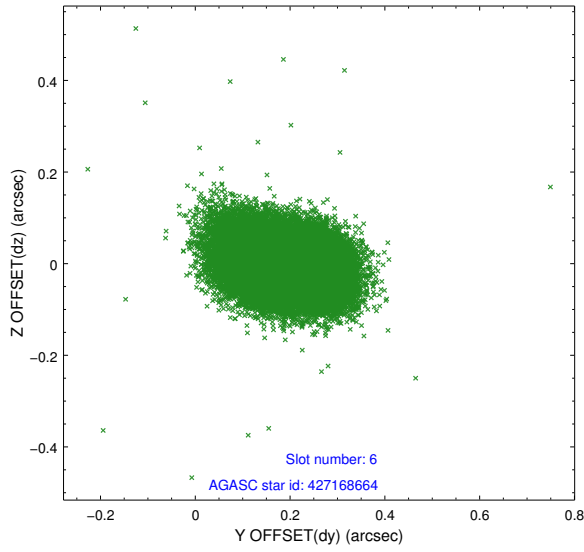
2.4.2 Slot 4



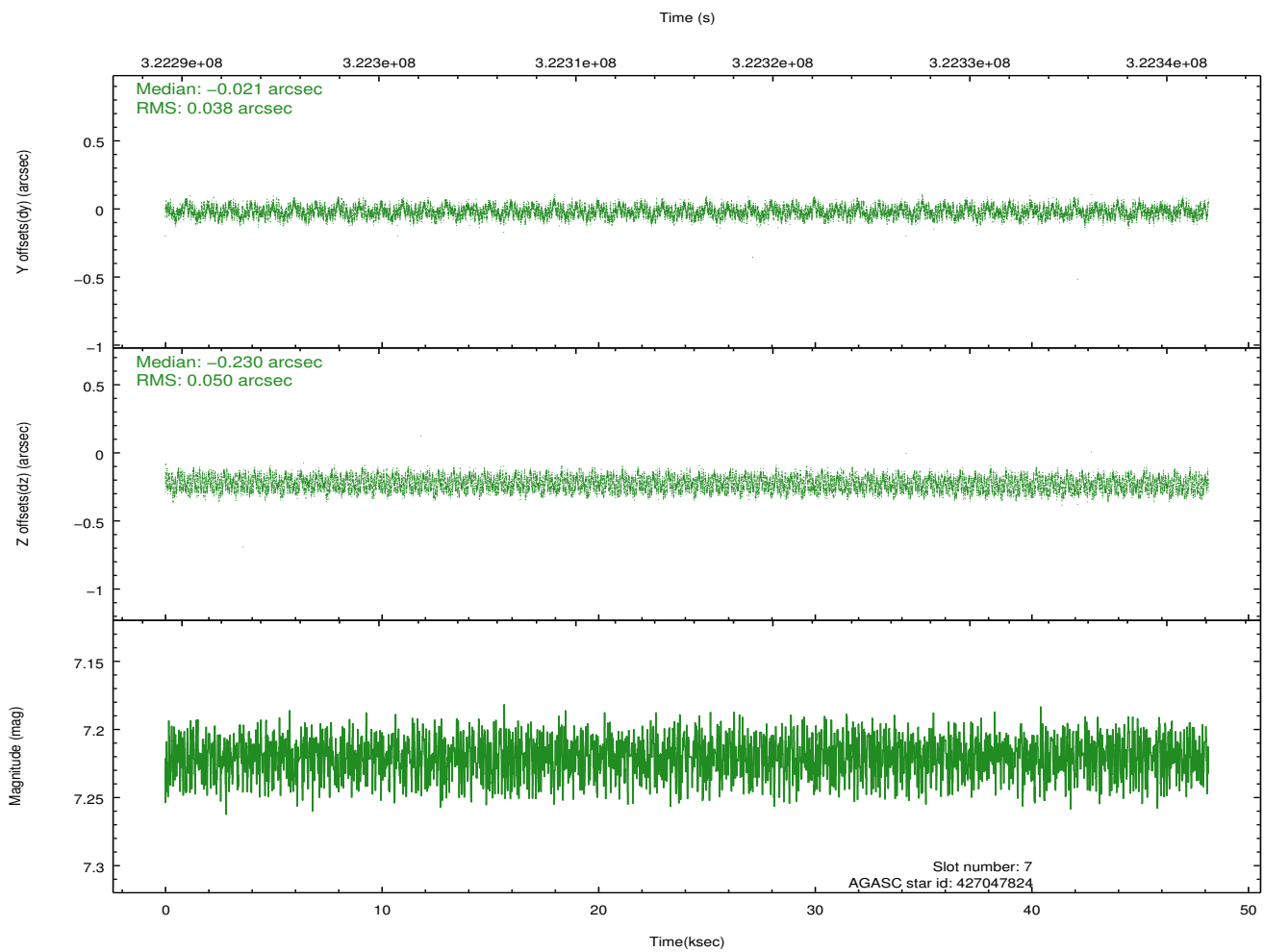
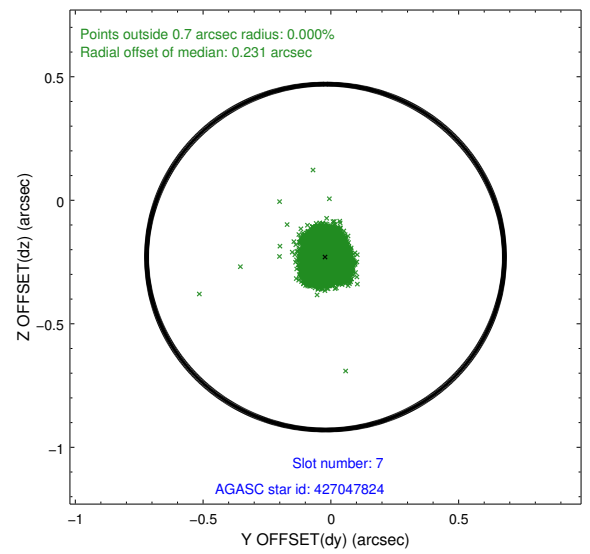
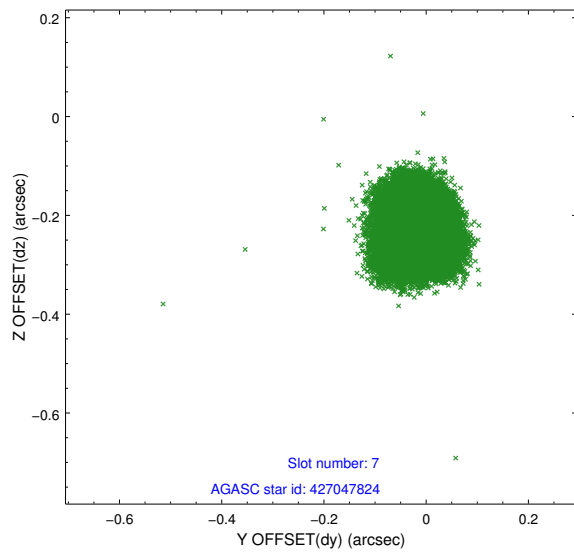
2.4.3 Slot 5



2.4.4 Slot 6

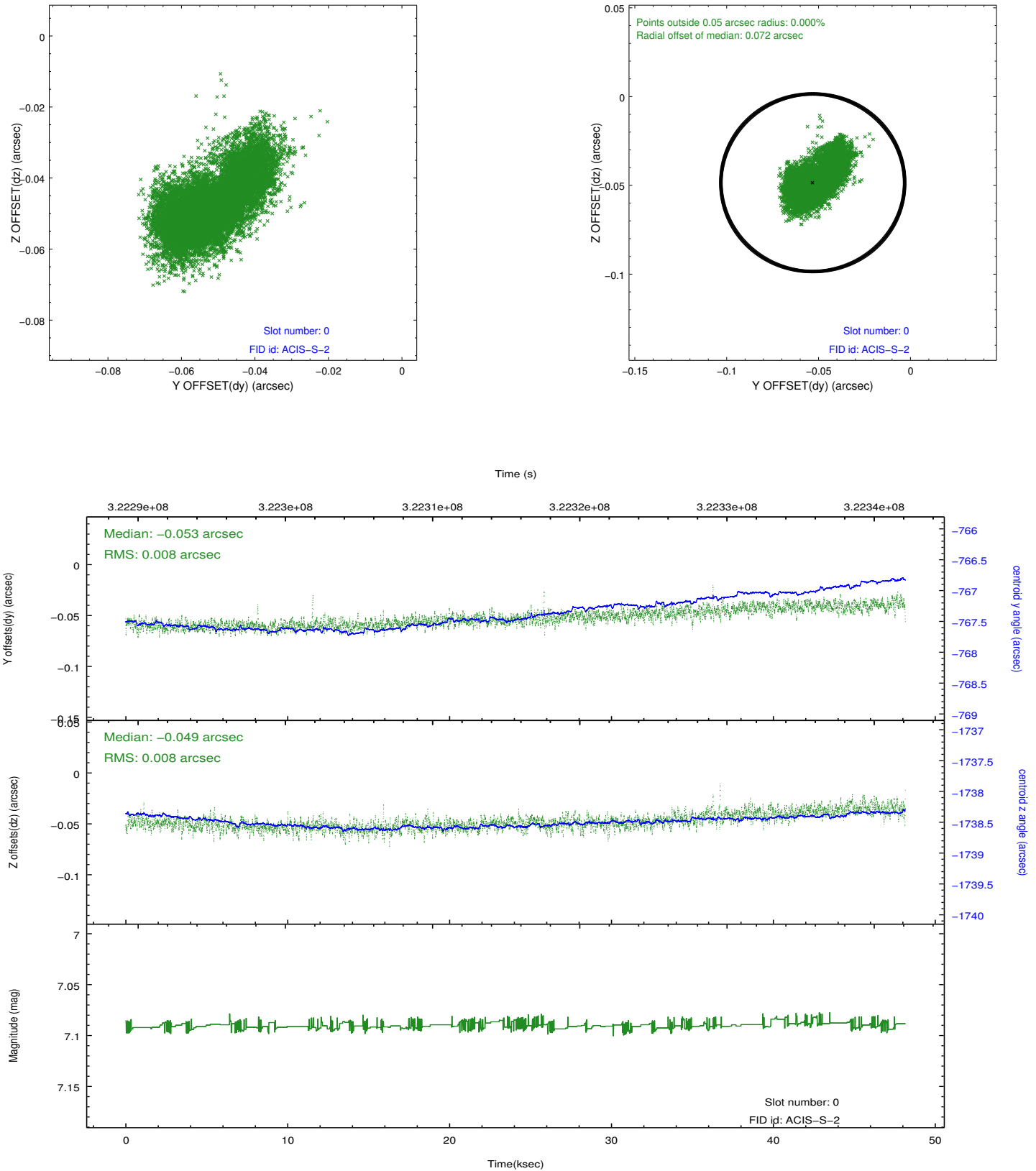


2.4.5 Slot 7

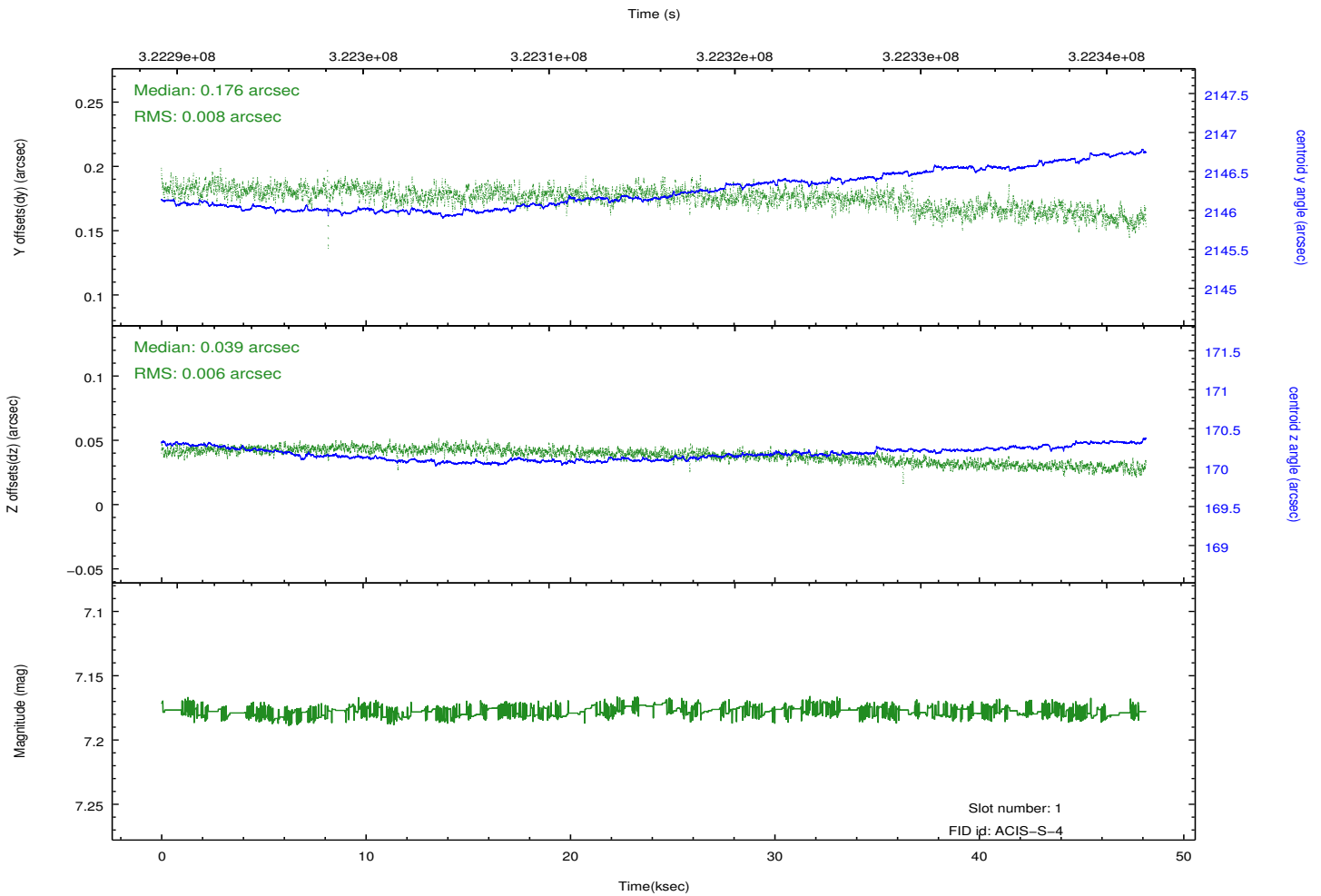
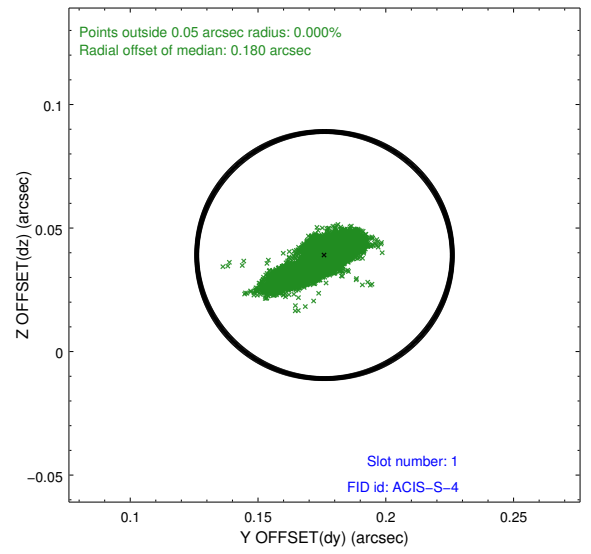
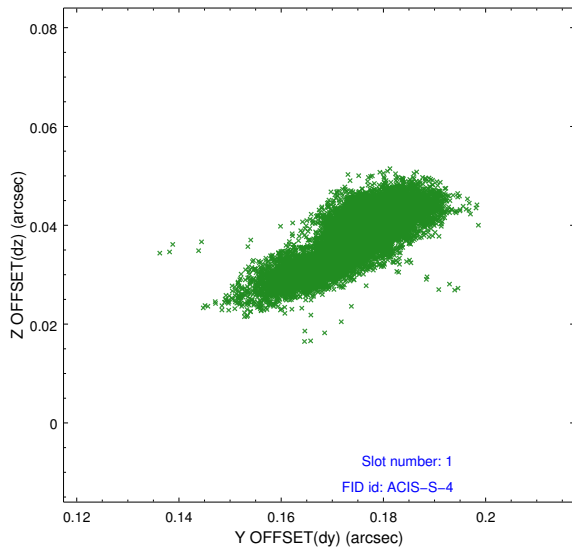


2.5 FID Slots

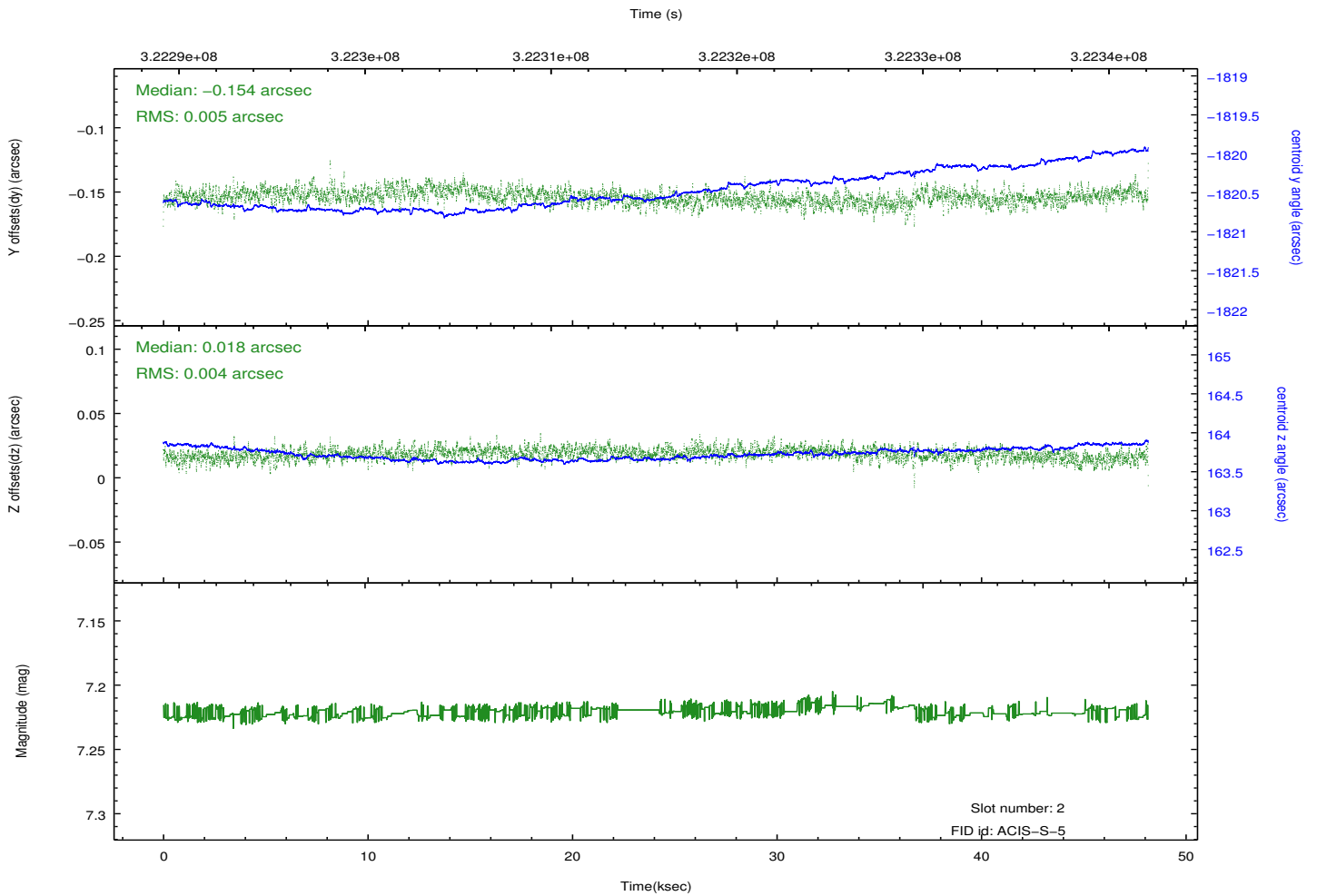
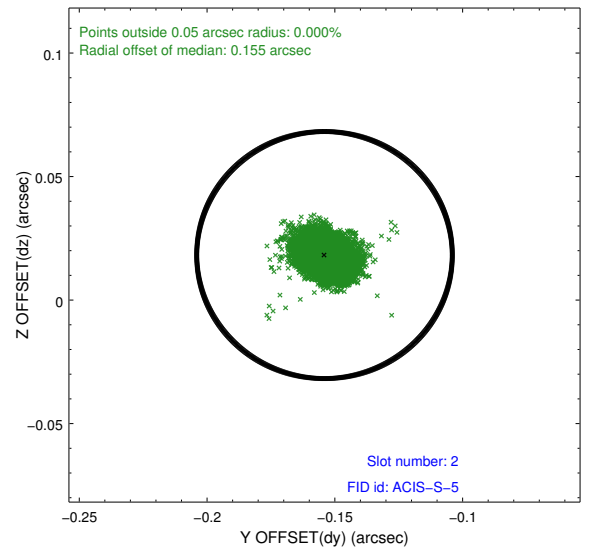
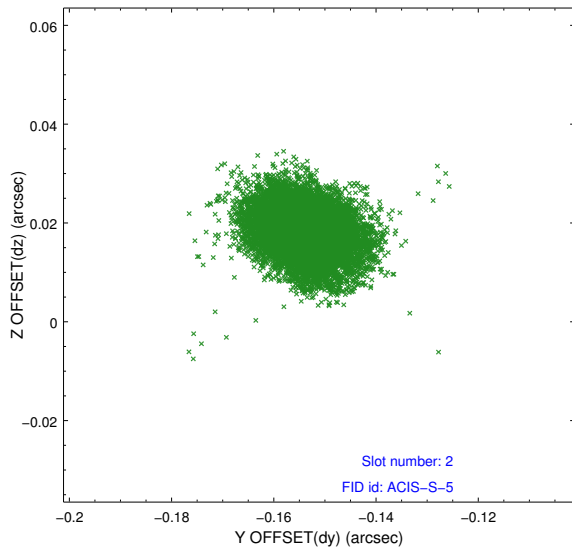
2.5.1 Slot 0



2.5.2 Slot 1



2.5.3 Slot 2



A Summary

A.1 Status

V&V Scientist	Jen Lauer
V&V Date (YYYY-MM-DD)	2012.05.14
V&V Edition	1
V&V Disposition and Status	OK
V&V Charge Time	48.0376003

A.2 Comments

Joint proposal with Spitzer. CCD chip I2 was not used in this observation. The chip was designated as optional by the observer and operational constraints mandated that the chip not be used.

=====

Coordinates of target in SIMBAD are ra=00:08:18.40, dec=+51:23:19.00.

Coordinates of X-ray source are ra=00:08:18.210, dec=+51:23:16.84.