

V&V Reference Report

L2 ASCDS Version : 8.4.5

Observation 902 - L2 Version 3
Chandra X-Ray Center

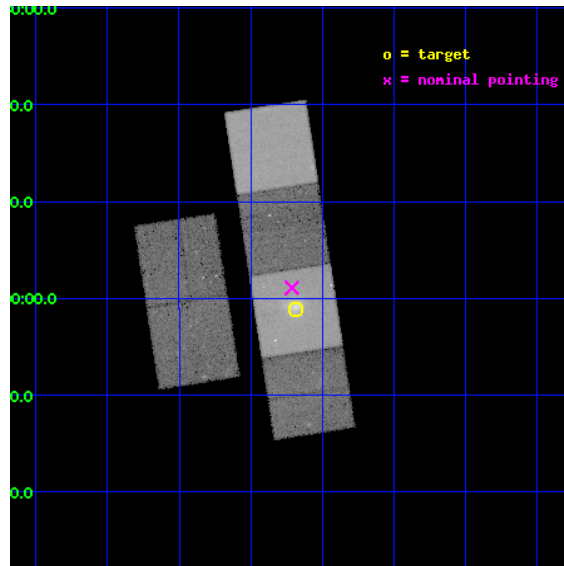
L2 Processing Date : Sep 2 2012

Contents

1	Front	2
2	OBI	3
2.1	OBI	3
2.1.1	Images	3
2.1.2	Bias	3
2.1.3	Parameters	4
2.1.4	Events	4
2.2	Compared Parameters	5
2.3	Aspect	6
2.4	Star Slots	9
2.4.1	Slot 3	9
2.4.2	Slot 4	10
2.4.3	Slot 5	11
2.4.4	Slot 6	12
2.4.5	Slot 7	13
2.5	FID Slots	14
2.5.1	Slot 0	14
2.5.2	Slot 1	15
2.5.3	Slot 2	16
A	Summary	17
A.1	Status	17
A.2	Comments	17

1 Front

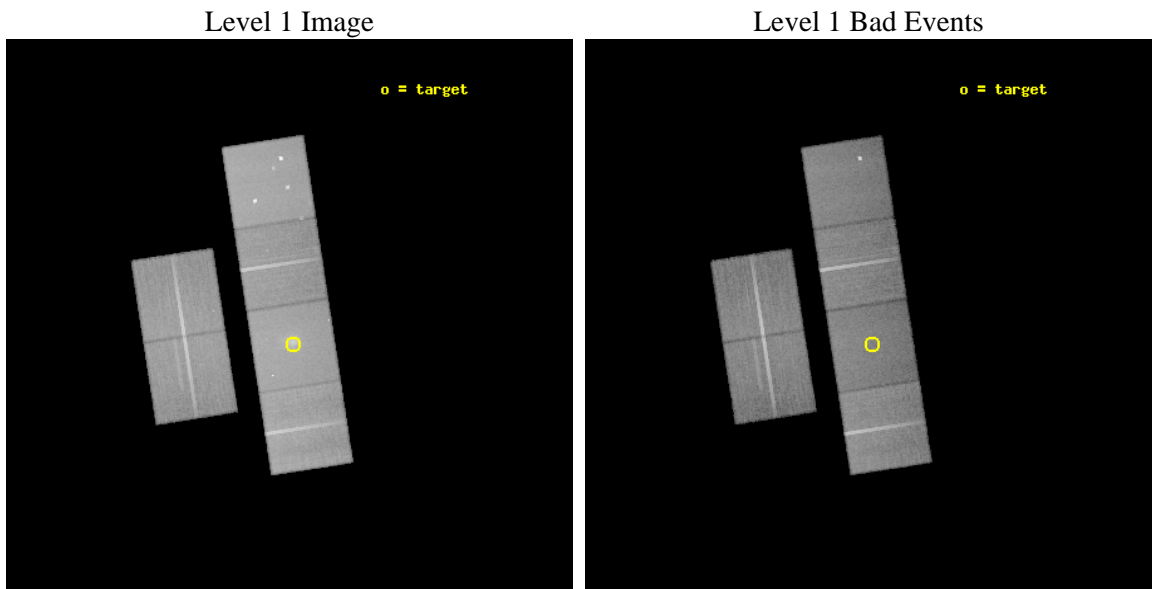
seq_num	800078	Sequence number
obs_id	902	Observation id
title	THE INTRACLUSTER MEDIUM OF A MASSIVE CLUSTER AT Z=0.5	Proposal tit
observer	Prof Megan Donahue	Principal investigator
object	MS 0451.6-0305	Source name
dtcycle	0	
cycle	P	events from which exps? Prim/Second/Both
ra_targ	73.545417	Observer's specified target RA [deg]
dec_targ	-3.018667	Observer's specified target Dec [deg]
ra_nom	73.552994901047	Nominal RA [deg]
dec_nom	-2.9818269029603	Nominal Dec [deg]
roll_nom	81.229391309727	Nominal Roll [deg]
revision	3	Processing version of data
ontime	44755.200041667	Sum of GTIs [s]
livetime	44188.482750393	Livetime [s]
ontime2	44751.959061518	Sum of GTIs [s]
ontime3	44751.959081441	Sum of GTIs [s]
ontime5	44755.200041667	Sum of GTIs [s]
ontime6	44751.959081426	Sum of GTIs [s]
ontime7	44755.200041667	Sum of GTIs [s]
ontime8	44738.995399982	Sum of GTIs [s]
l2events	425567	Number of level 2 events



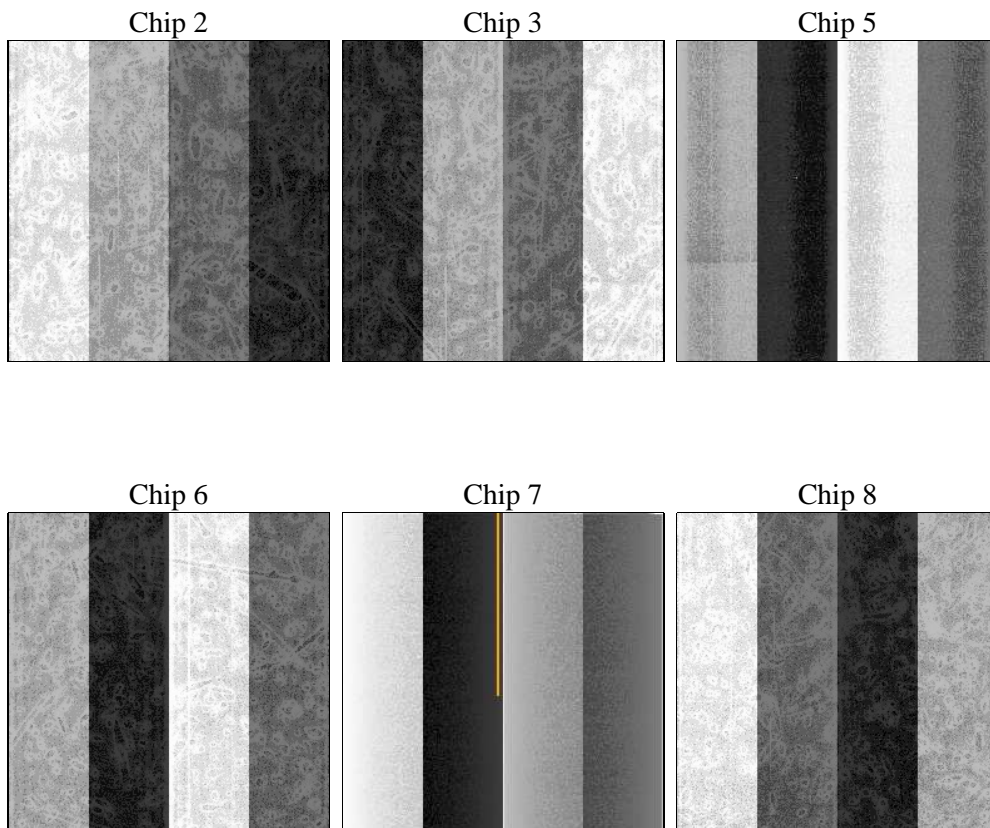
2 OBI

2.1 OBI

2.1.1 Images



2.1.2 Bias



2.1.3 Parameters

obi_num	0	Obi number	sched_exp_time	45000.000000	[s] Scheduled observation exposure time
ascdsver	8.4.5	Processing system revision	ontime	44755.200041667	Sum of GTIs [s]
caldbver	4.5.1.1	 	ontime2	44751.959061518	Sum of GTIs [s]
date	2012-09-02T12:21:17	Date and time of file creation	ontime3	44751.959081441	Sum of GTIs [s]
revision	3	Processing version of data	ontime5	44755.200041667	Sum of GTIs [s]
			ontime6	44751.959081426	Sum of GTIs [s]
			ontime7	44755.200041667	Sum of GTIs [s]
			ontime8	44738.995399982	Sum of GTIs [s]
			l1events	1893177	Number of level 1 events

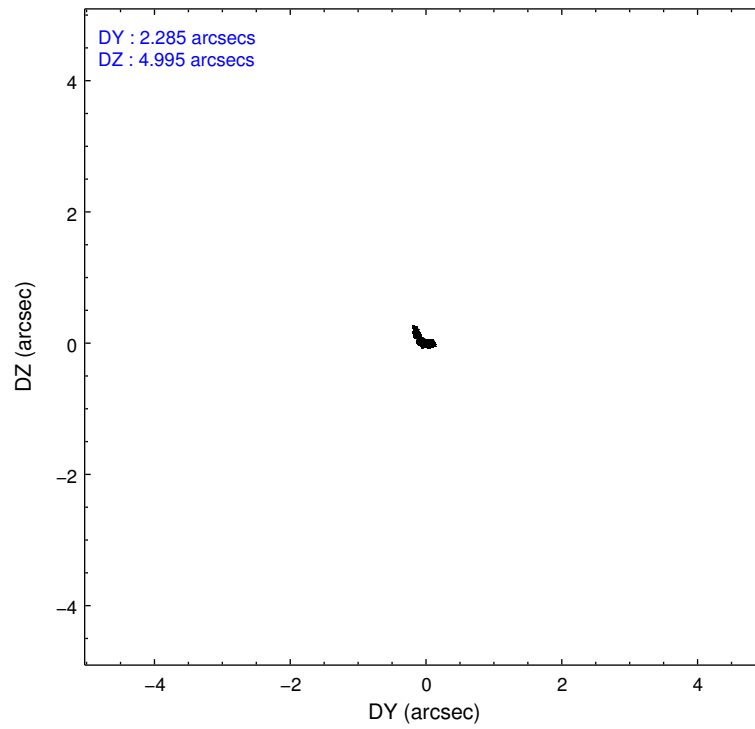
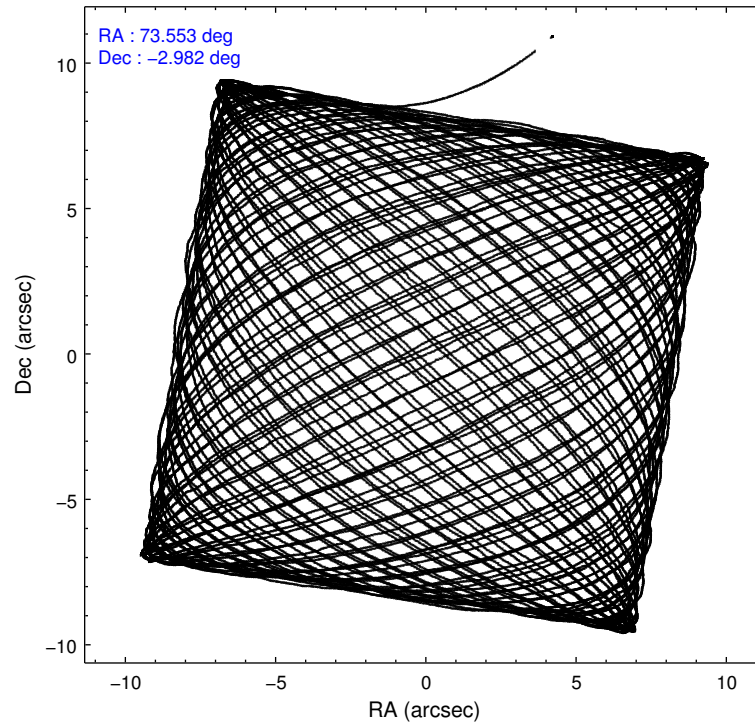
2.1.4 Events

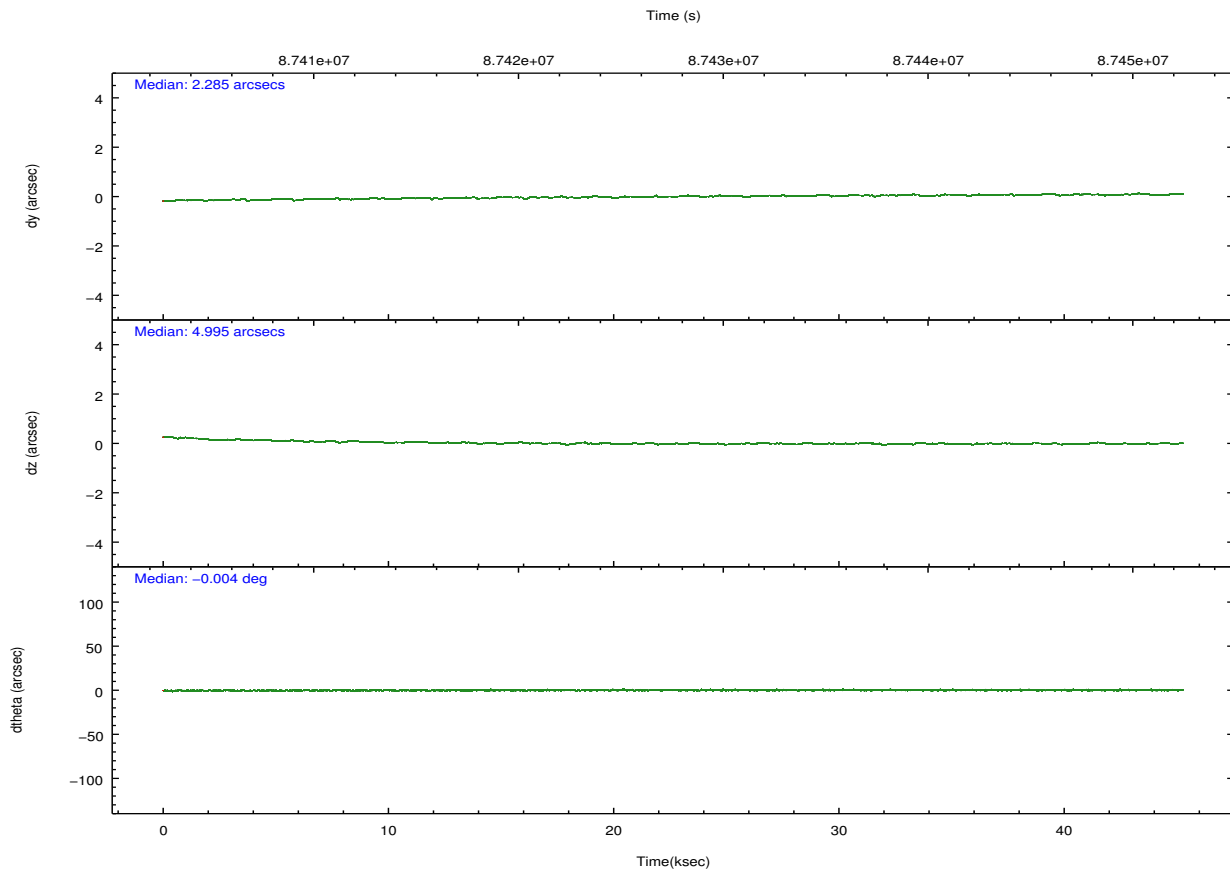
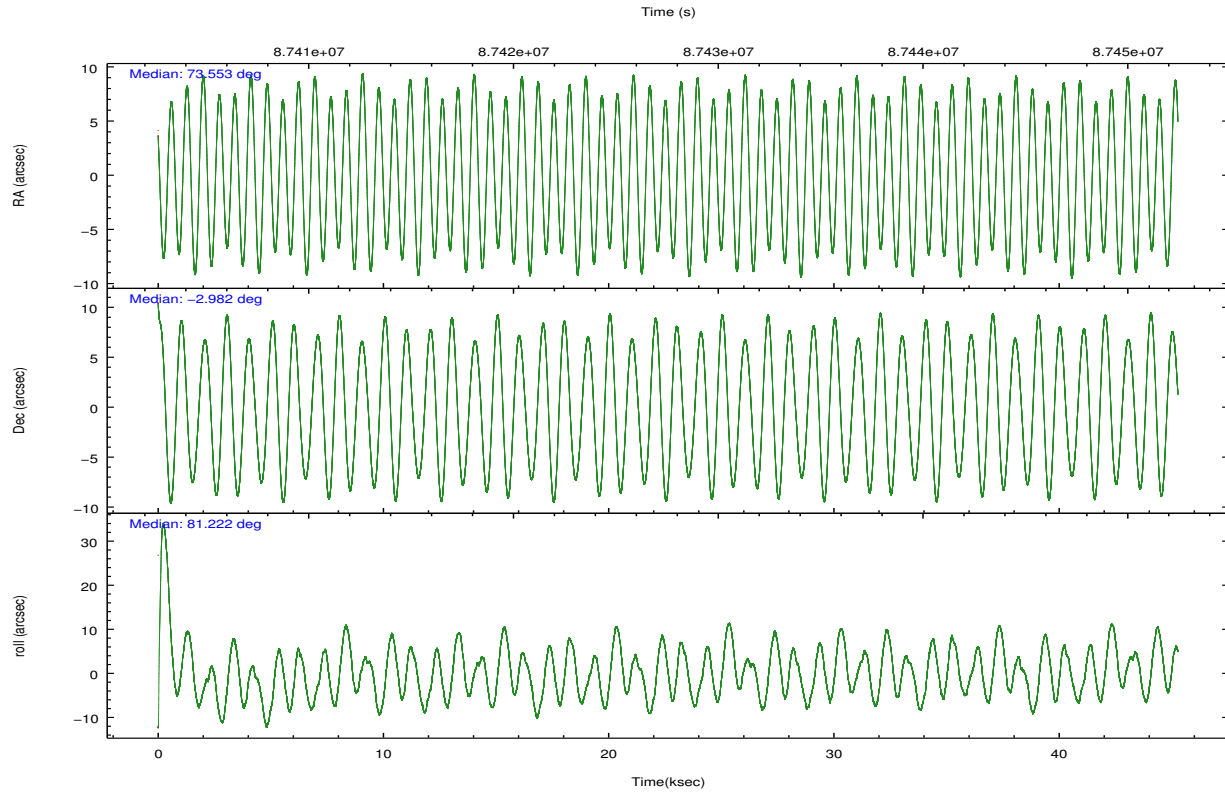
	ccd 2	ccd 3	ccd 5	ccd 6	ccd 7	ccd 8		ccd 2	ccd 3	ccd 5	ccd 6	ccd 7	ccd 8
level 1 events	272458	265112	382559	269922	358116	345010	grade 0 events	13080	12890	25888	12652	21877	21363
rejected events	242602	235545	204179	239366	193939	279224		4%	4%	6%	4%	6%	6%
rejected %	89%	88%	53%	88%	54%	80%	grade 1 events	132	132	420	109	338	193
								0%	0%	0%	0%	0%	0%
							grade 2 events	6184	5711	51174	5966	33621	14129
								2%	2%	13%	2%	9%	4%
							grade 3 events	2867	2898	7732	3066	15604	6947
								1%	1%	2%	1%	4%	2%
							grade 4 events	2651	2908	6879	2971	15676	6332
								0%	1%	1%	1%	4%	1%
							grade 5 events	8790	9762	29393	10728	32095	13768
								3%	3%	7%	3%	8%	3%
							grade 6 events	5076	5166	86726	5906	77410	17017
								1%	1%	22%	2%	21%	4%
							grade 7 events	233678	225645	174347	228524	161495	265261
								85%	85%	45%	84%	45%	76%

2.2 Compared Parameters

Parameter	Planned	Actual	Parameter	Planned	Actual
Instrument	ACIS	ACIS	Obspar format version number	7	7
Detector	ACIS-235678	ACIS-235678	Obspar file type	PREDICTED	ACTUAL
Grating	NONE	NONE	Obspar update status	NONE	UPDATED
Data mode	FAINT	FAINT	Number of optional ACIS chips dropped	0	0
Observation mode	POINTING	POINTING	On-chip summing requested	N	N
[deg] Pointing RA	73.563091	73.55299490104704	Subarray requested	NONE	NONE
[deg] Pointing Dec	-3.007266	-2.981826902960274	Alternating exposures requested	N	N
[deg] Pointing Roll	81.073299	81.22939130972665	[s] Primary exposure time	0.000000	3.2
[mm] SIM focus pos	-0.684267	-0.6828225247311905			
[mm] SIM defocus	0	0.001444936568705701			
[mm] SIM translation stage pos	-190.132523	-190.1425803651734			
[mm] SIM translation stage offset	0	0.01005778216563158			
[s] Observation start time (MET)	87405106.184000	87404519.47394501			
Observation start date	2000-10-08T15:10:42	2000-10-08T15:01:59			
[s] Observation end time (MET)	87450106.184000	87452025.150739			
Observation end date	2000-10-09T03:40:42	2000-10-09T04:13:45			
Read mode	TIMED	TIMED			

2.3 Aspect



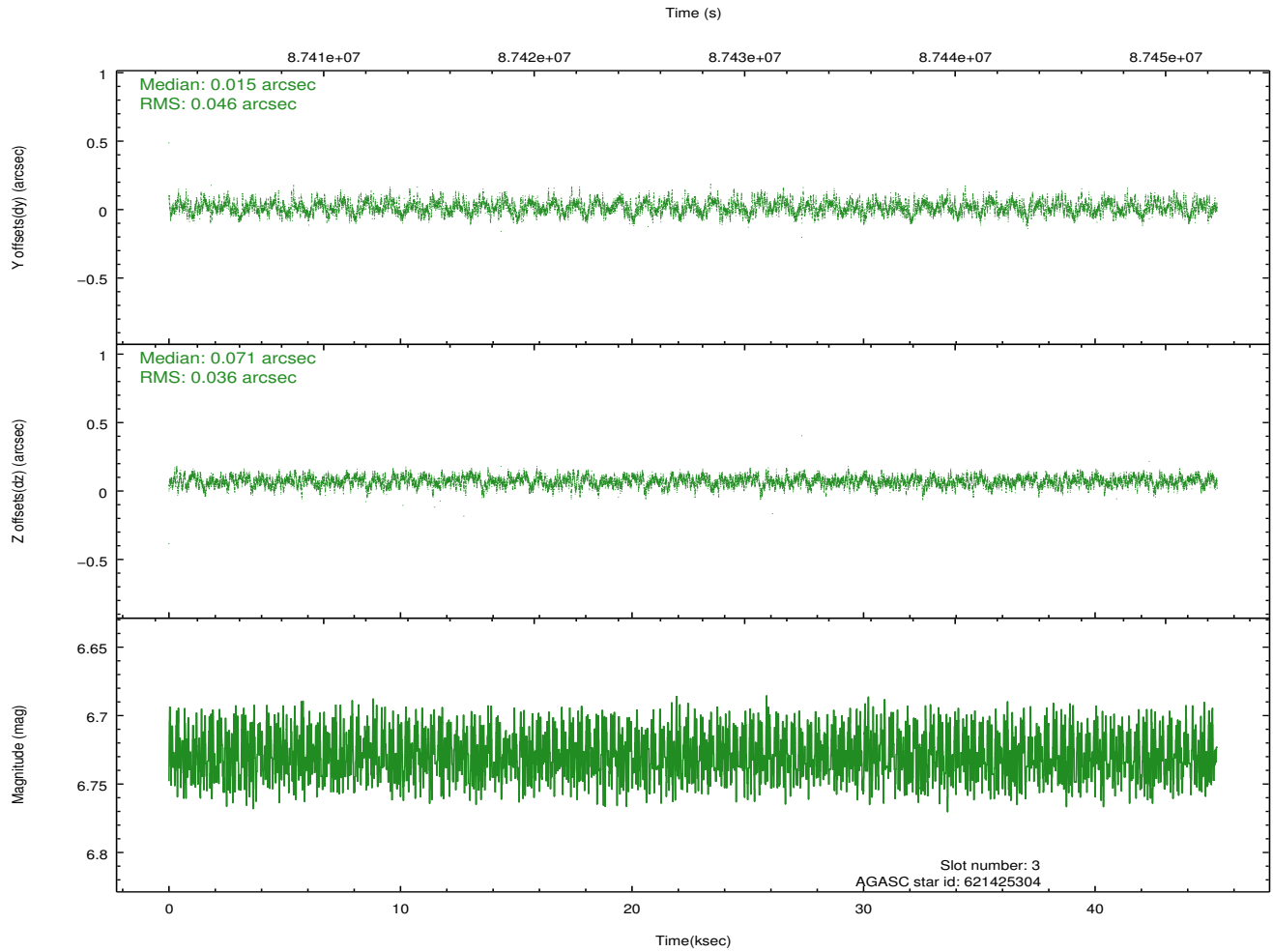
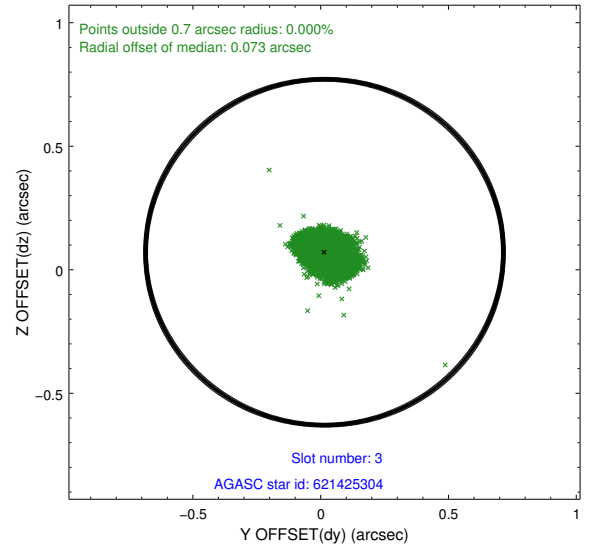
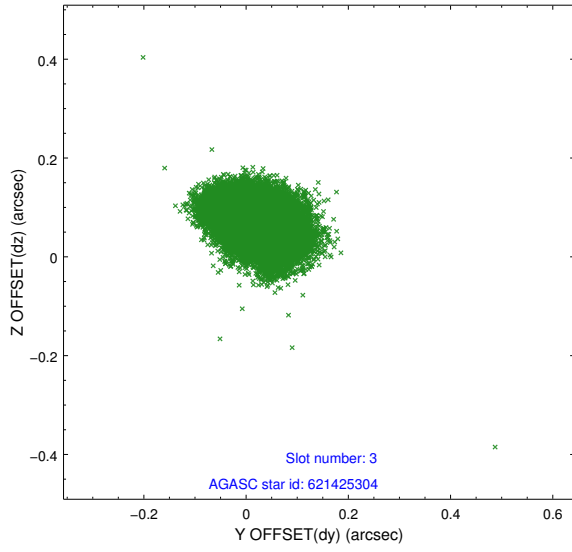


Slot Statistics

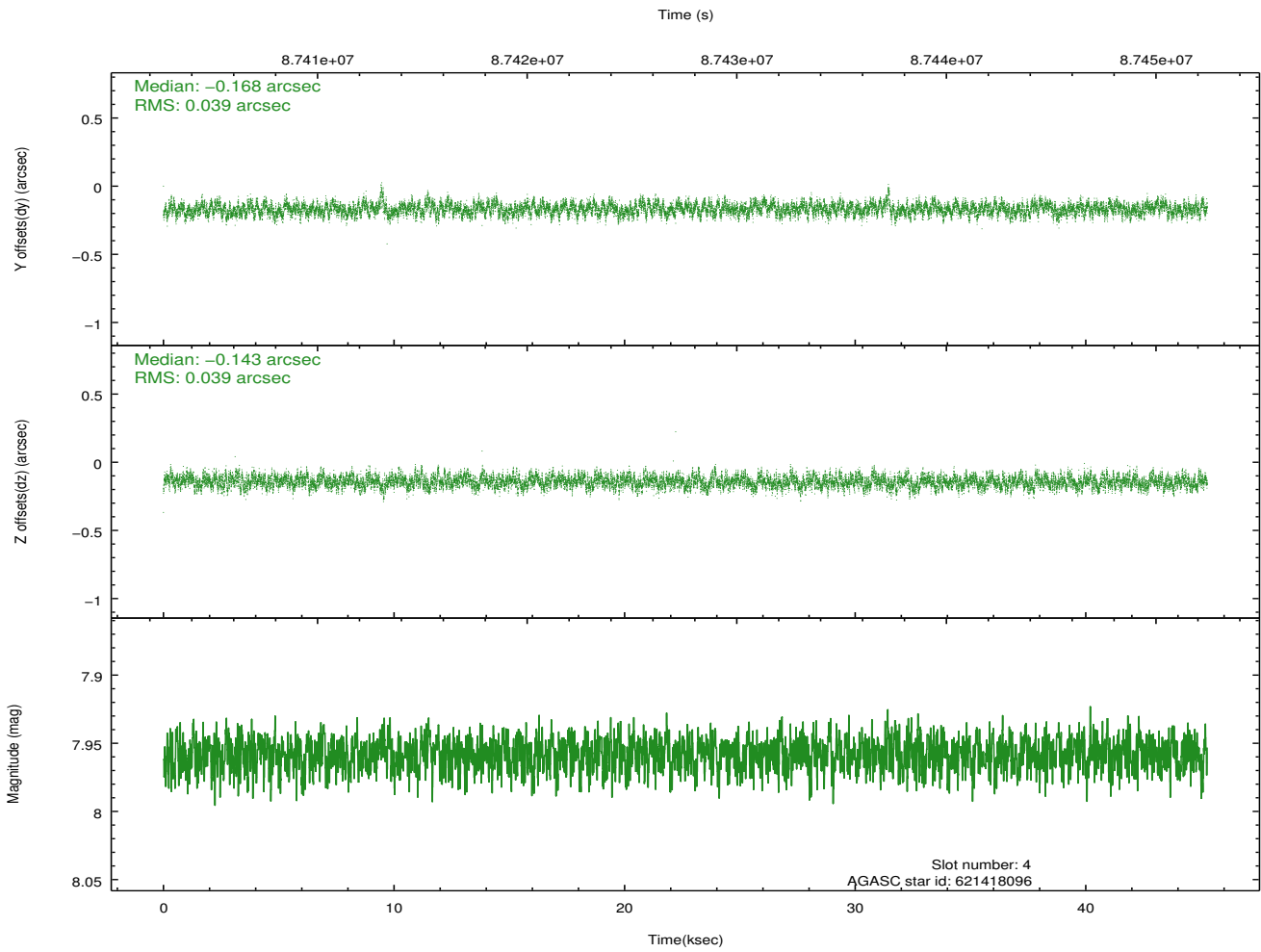
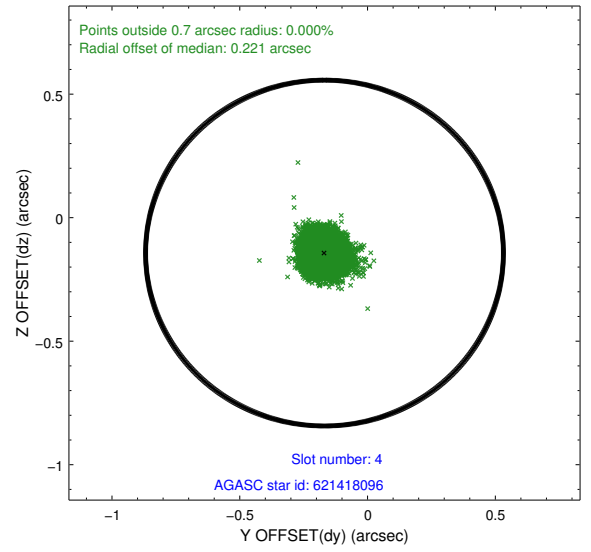
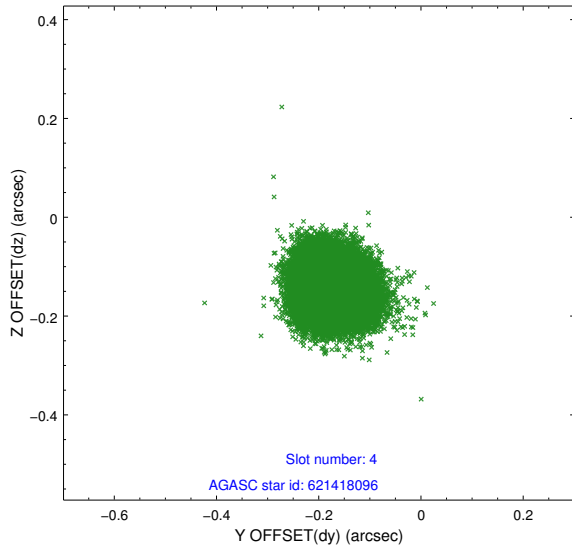
slot	status	id	mag	n_pts	med_dy	med_dz	dr1	dr2	ra	dec	mean_y	mean_z
0	FID	ACIS-S-3	7.36	11041	-0.076	-0.023	0.007	0.012	0.000000	0.000000	58.24	-1855.16
1	FID	ACIS-S-4	7.21	11041	0.022	0.051	0.007	0.012	0.000000	0.000000	2158.48	182.46
2	FID	ACIS-S-5	7.24	11043	0.027	-0.019	0.007	0.011	0.000000	0.000000	-1807.72	176.05
3	GUIDE	621425304	6.73	22084	0.015	0.071	0.062	0.100	73.616571	-3.225917	-747.78	-311.67
4	GUIDE	621418096	7.96	22083	-0.168	-0.143	0.059	0.094	73.325486	-2.602034	1308.10	1070.94
5	GUIDE	621289504	8.92	22081	0.140	-0.159	0.086	0.139	73.076403	-3.394128	-1647.71	1511.77
6	GUIDE	621417600	9.65	22069	0.035	0.049	0.095	0.153	73.769107	-2.601844	1556.72	-504.75
7	GUIDE	621416480	9.73	21987	-0.028	0.181	0.128	0.214	74.169838	-3.123852	-76.49	-2219.32

2.4 Star Slots

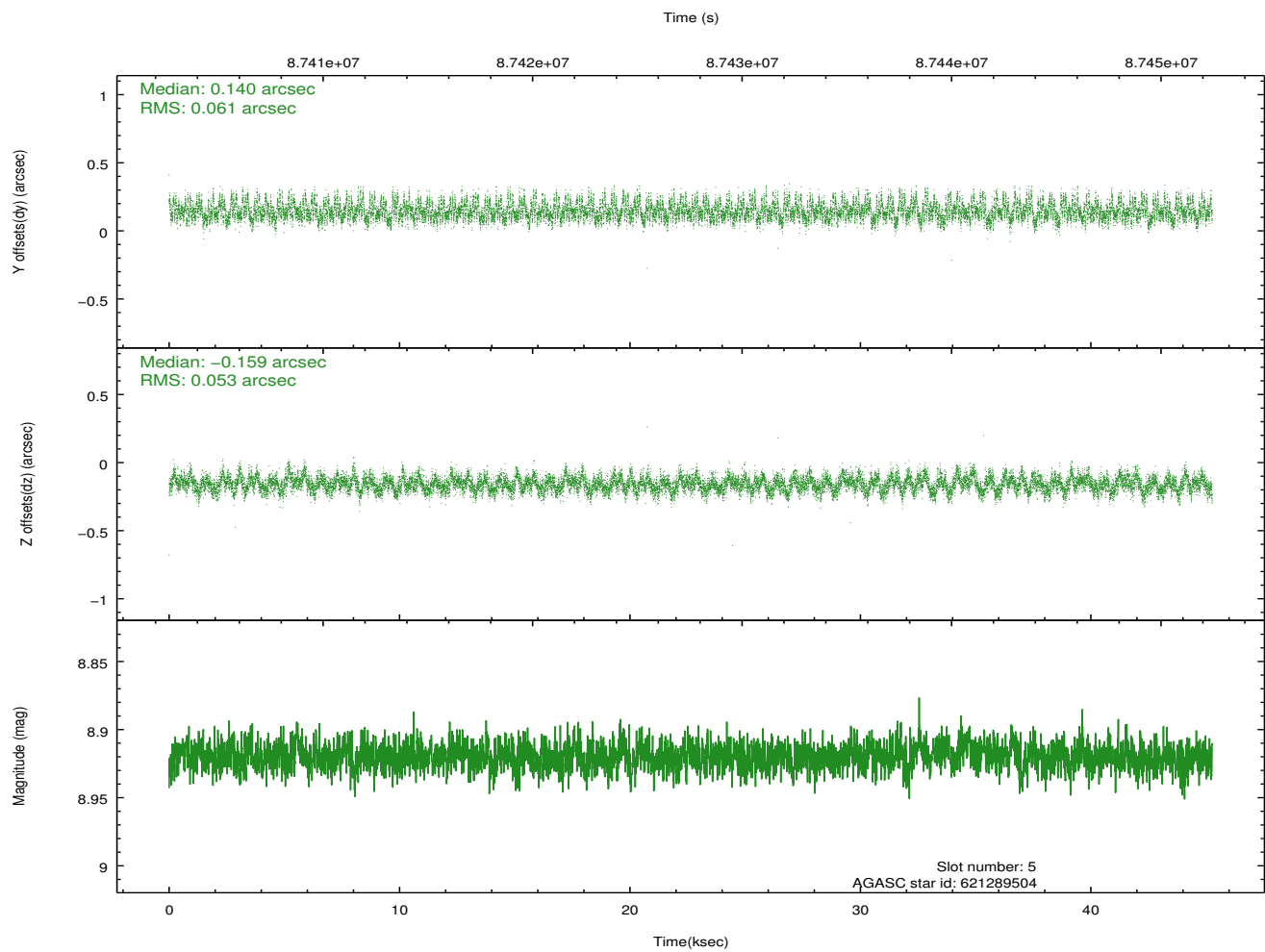
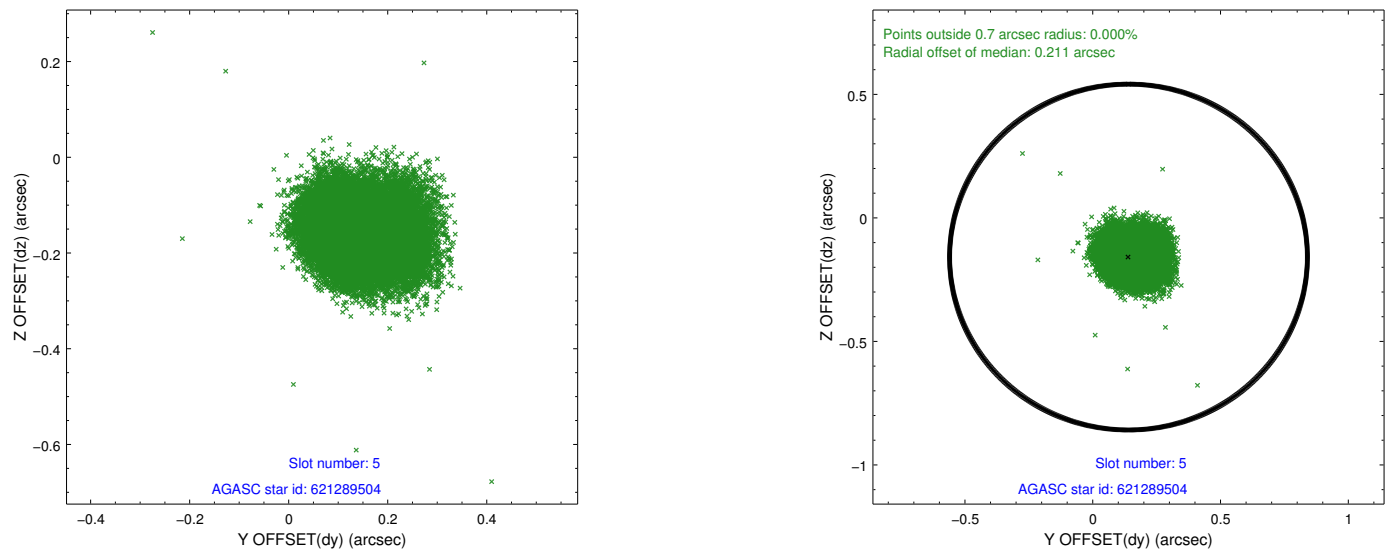
2.4.1 Slot 3



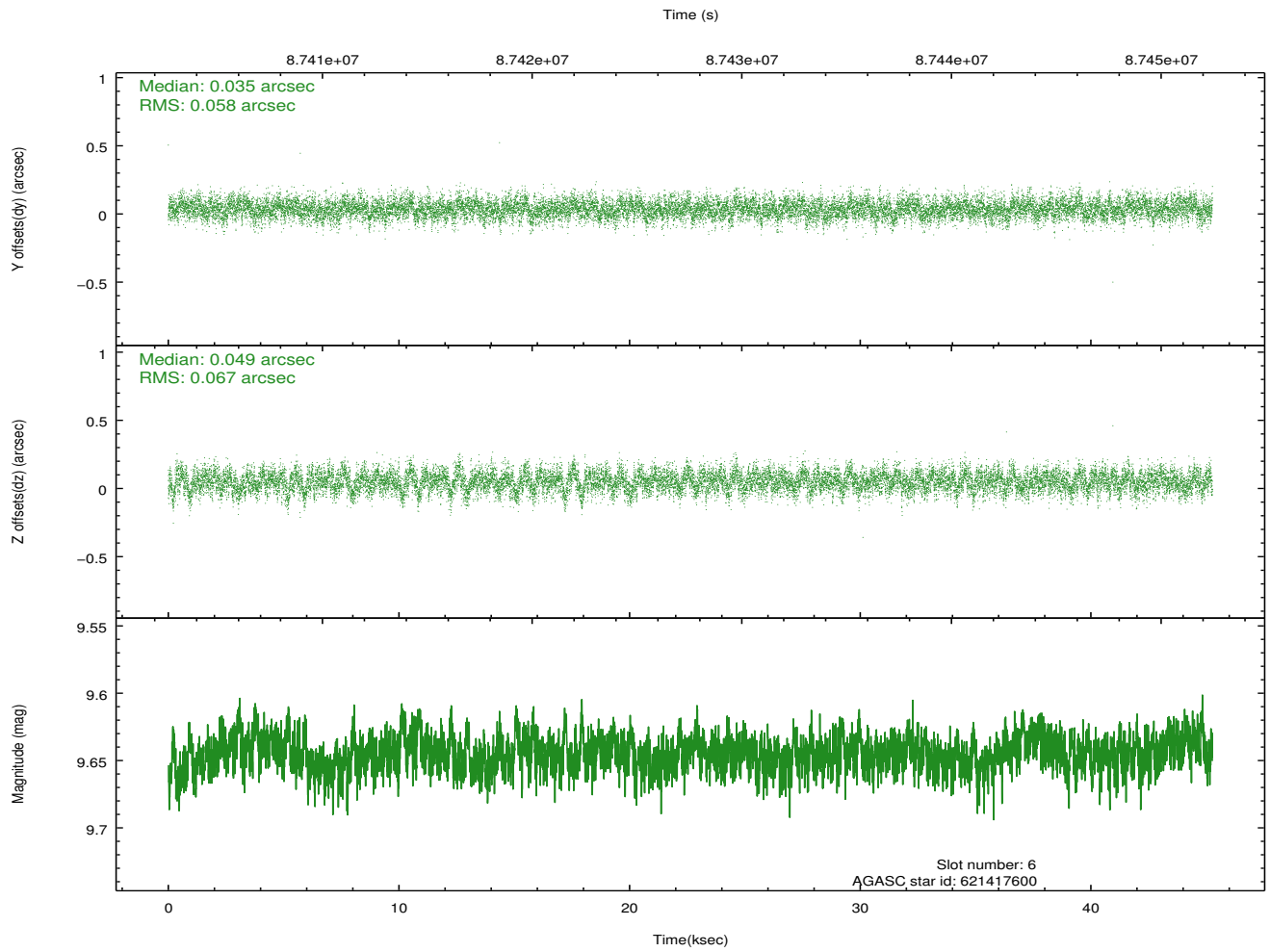
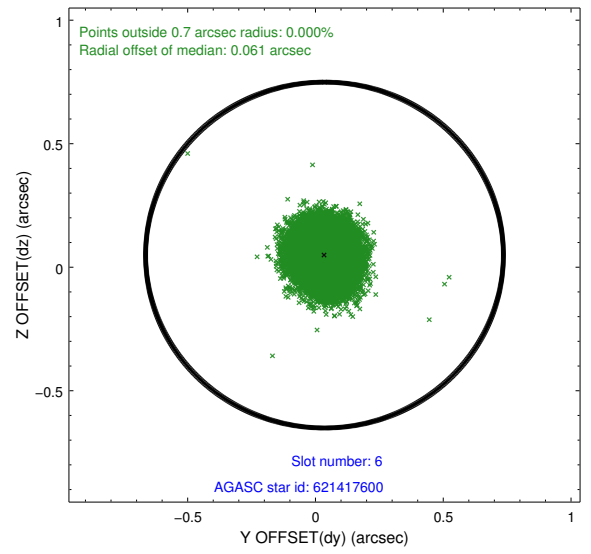
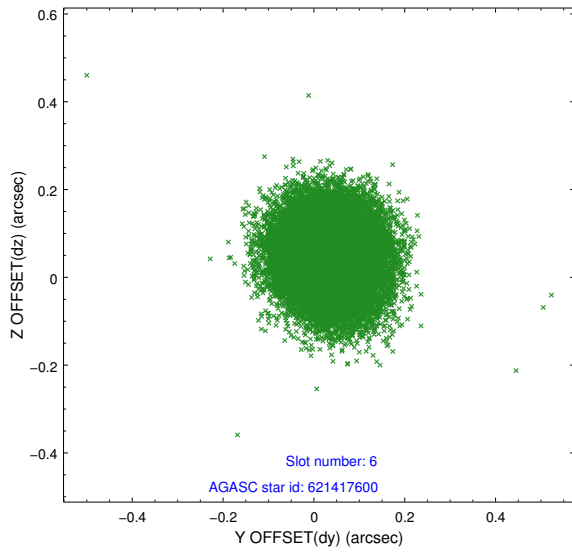
2.4.2 Slot 4



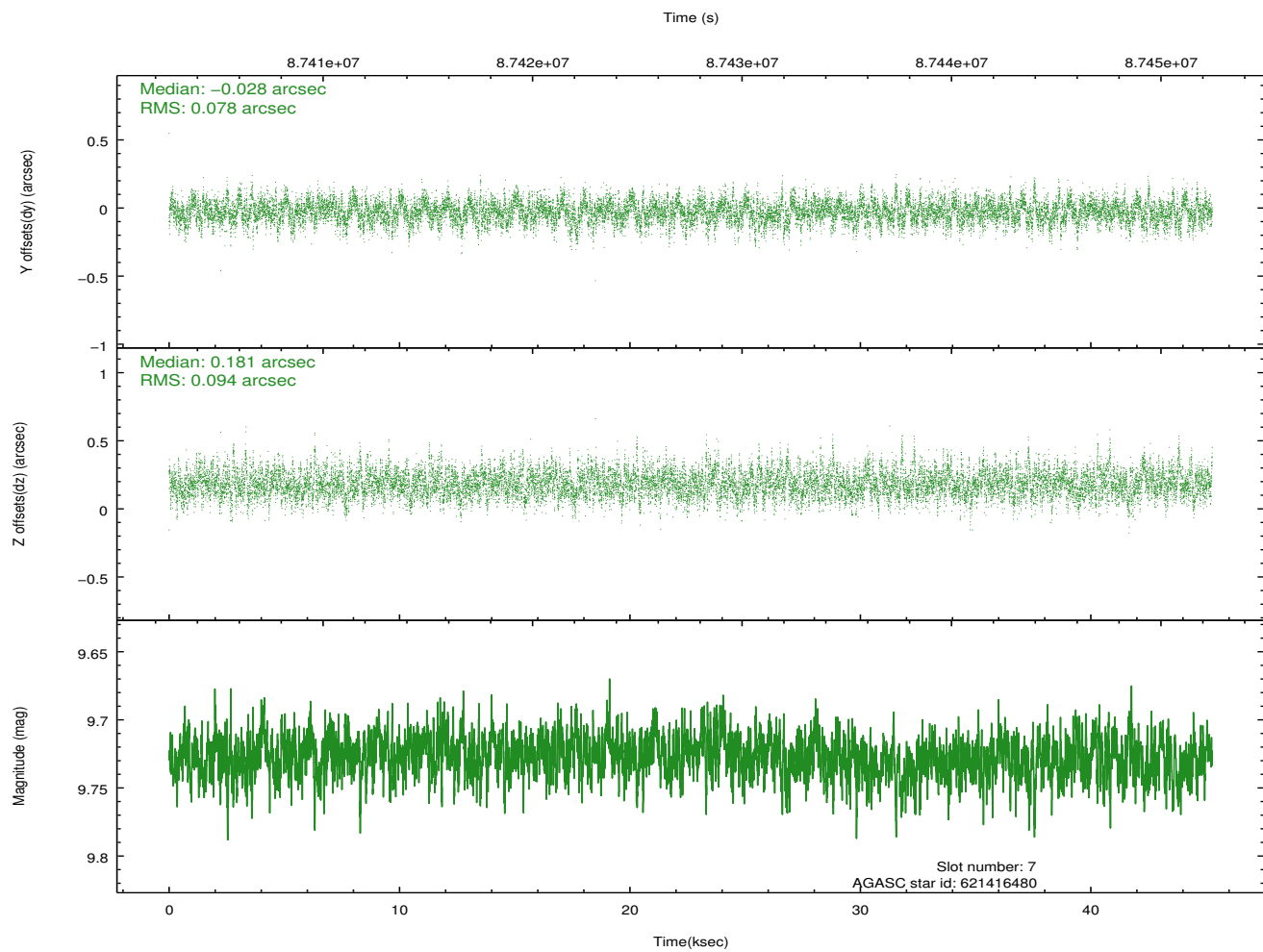
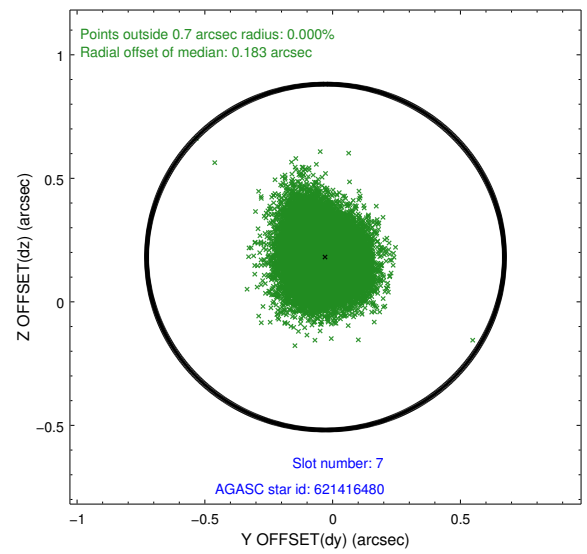
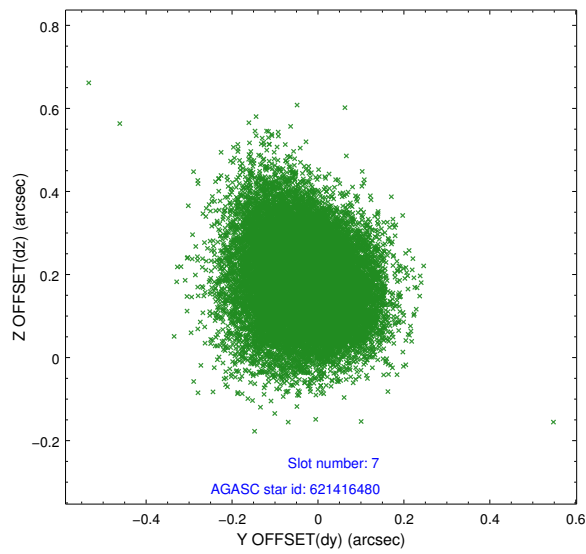
2.4.3 Slot 5



2.4.4 Slot 6

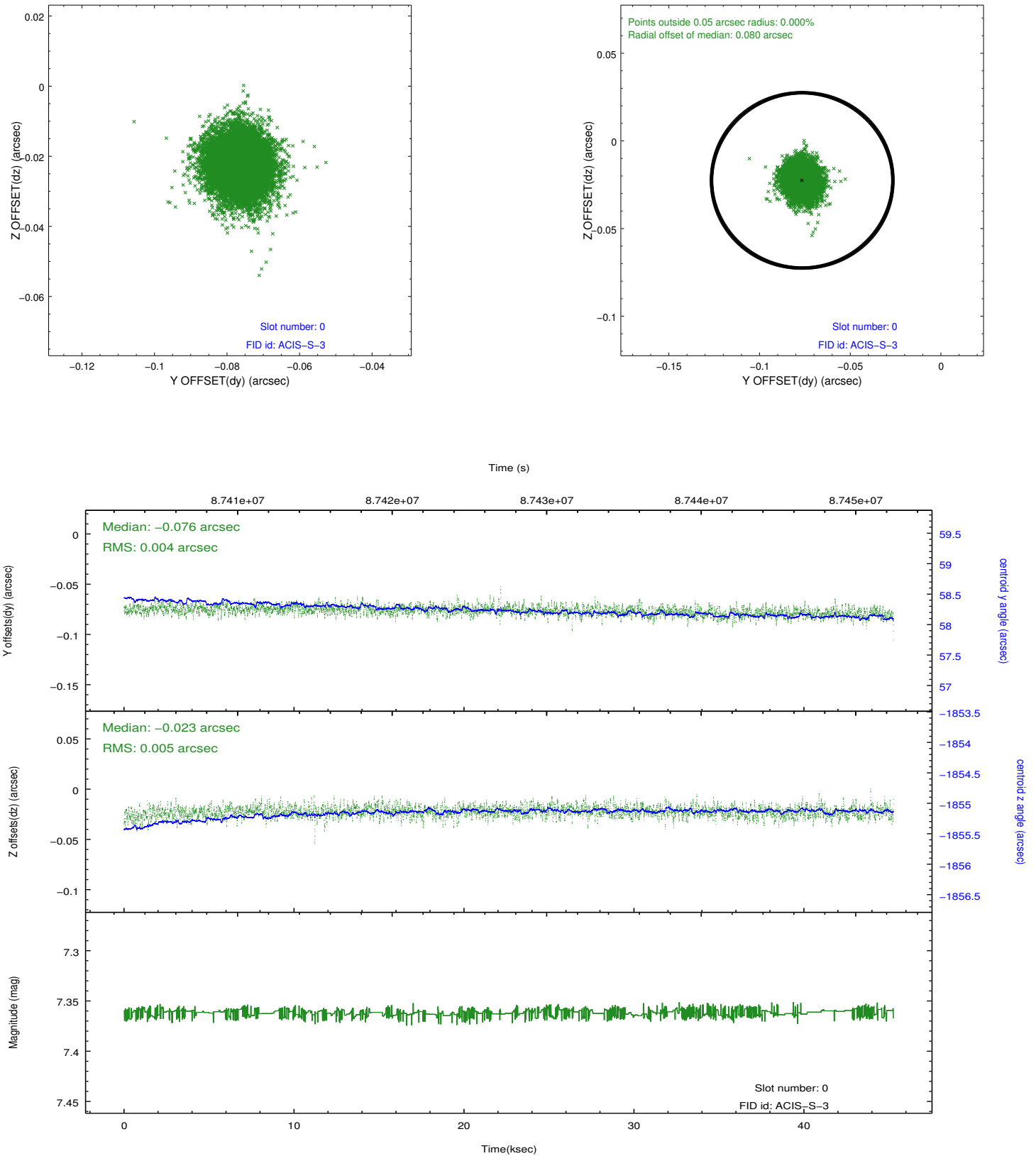


2.4.5 Slot 7

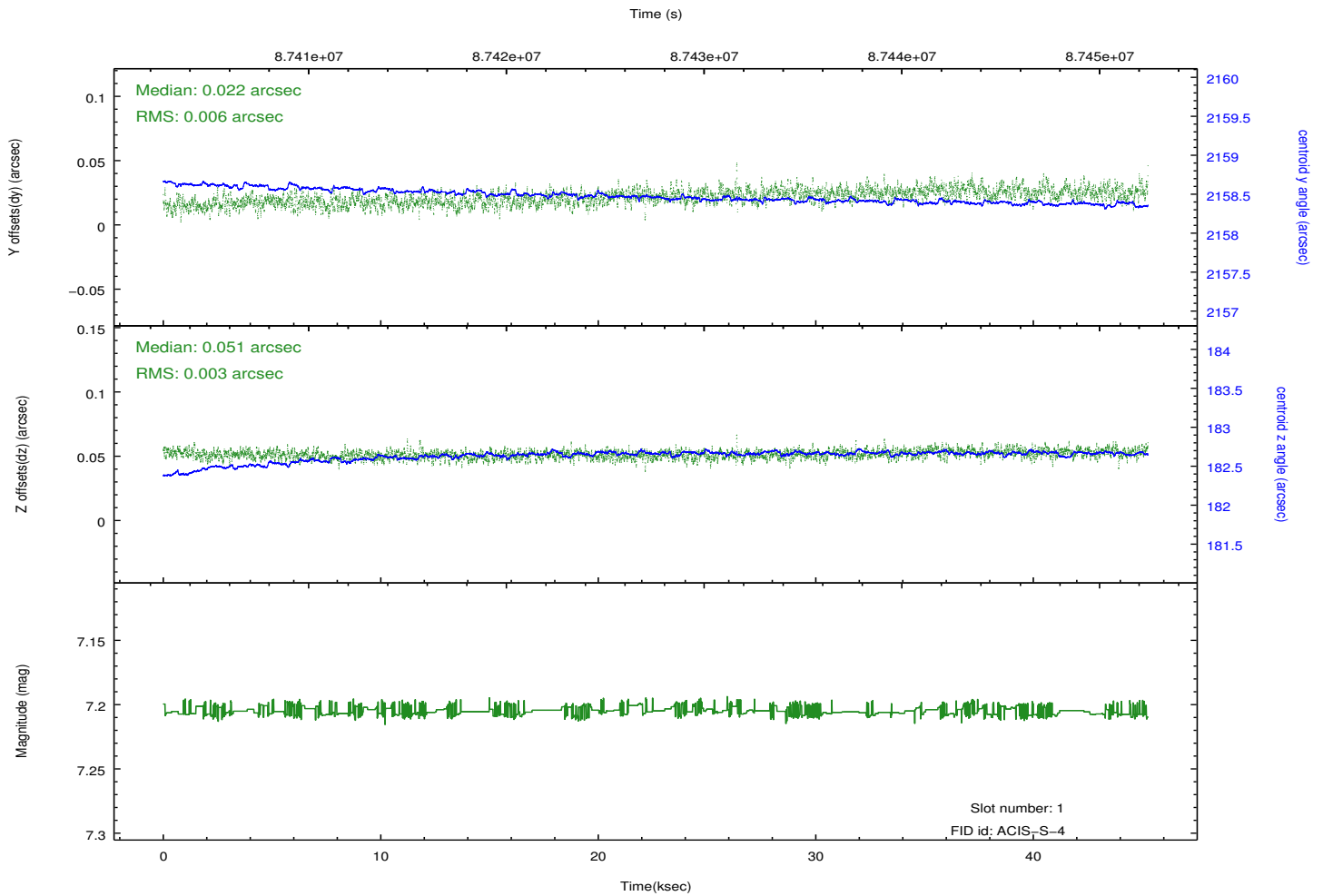
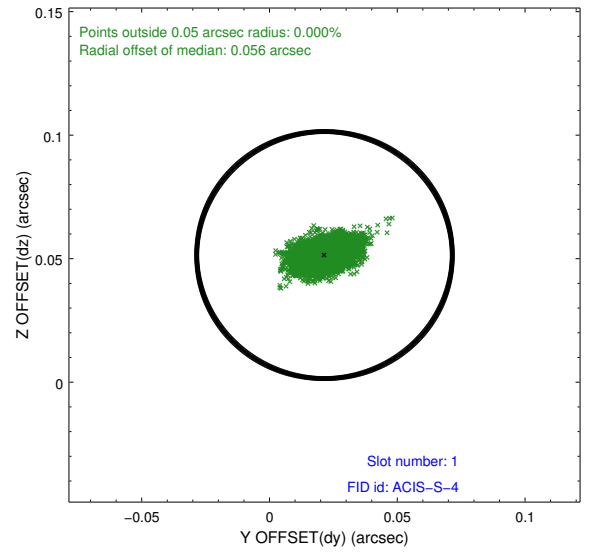
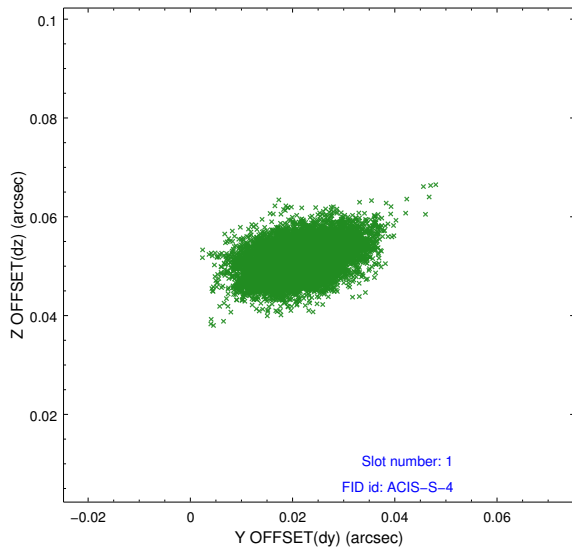


2.5 FID Slots

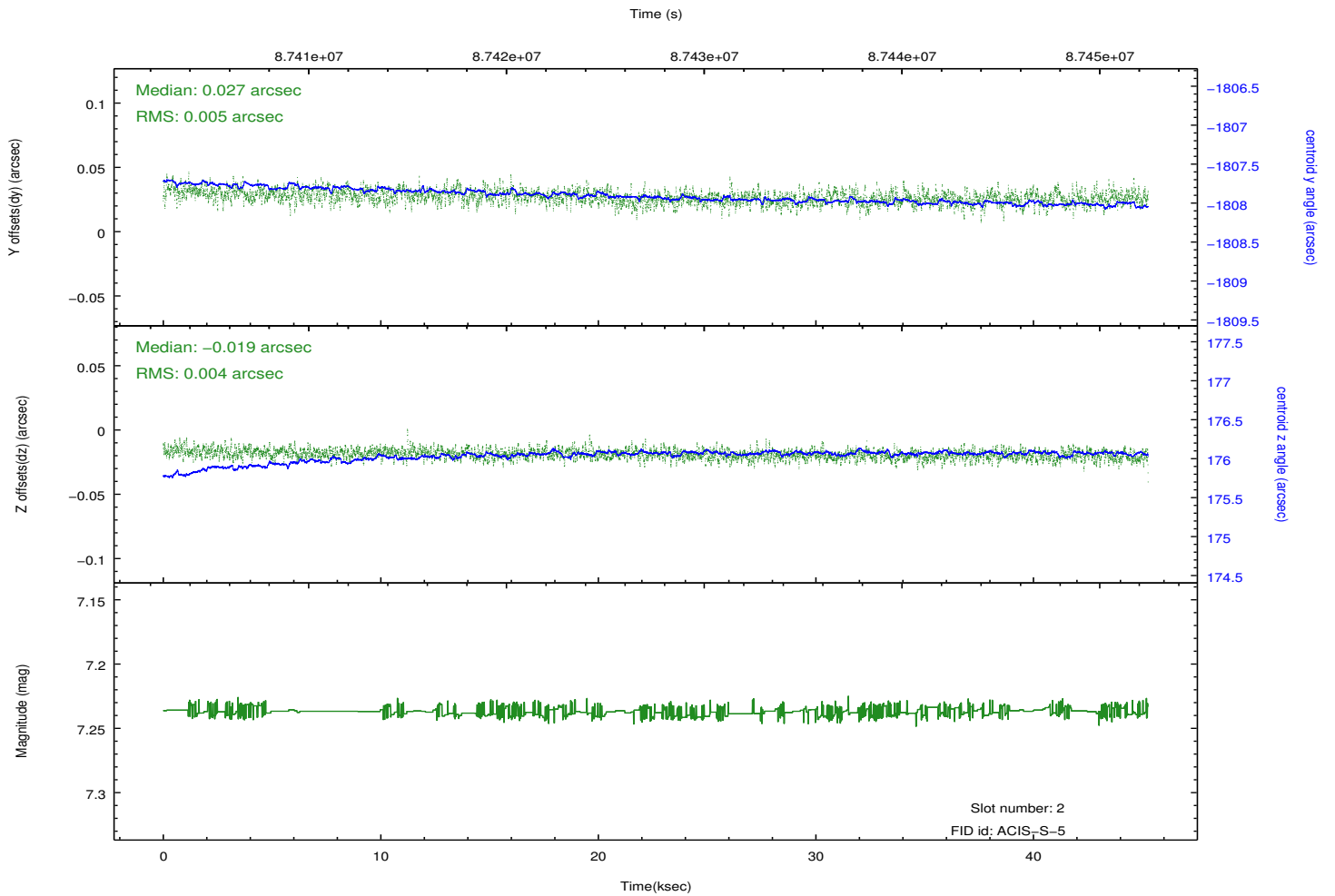
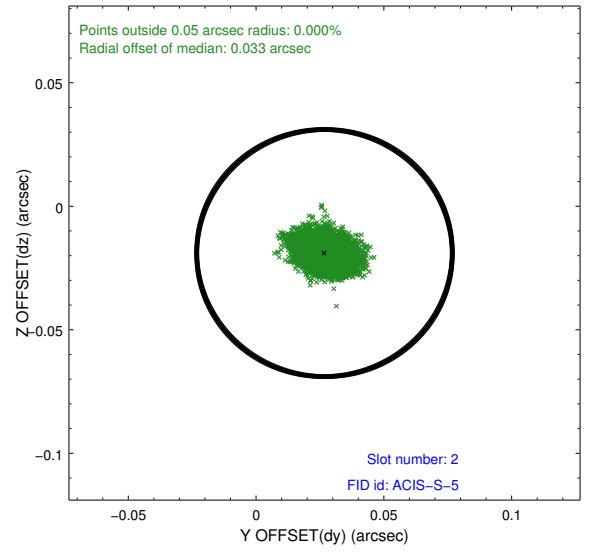
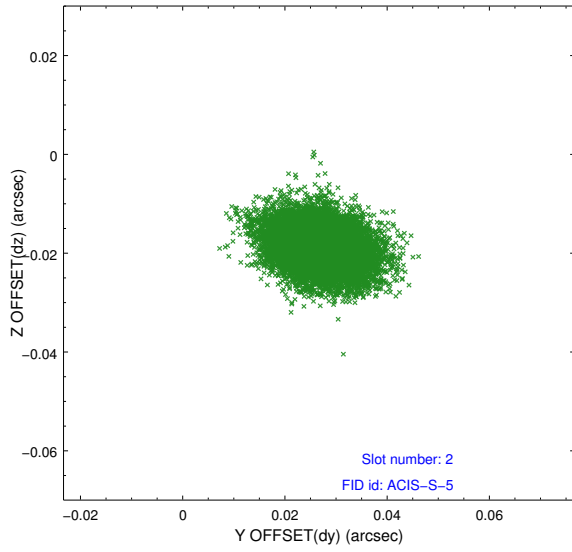
2.5.1 Slot 0



2.5.2 Slot 1



2.5.3 Slot 2



A Summary

A.1 Status

V&V Scientist	Beth Sundheim
V&V Date (YYYY-MM-DD)	2012.09.10
V&V Edition	1
V&V Disposition and Status	OK
V&V Charge Time	44.758

A.2 Comments